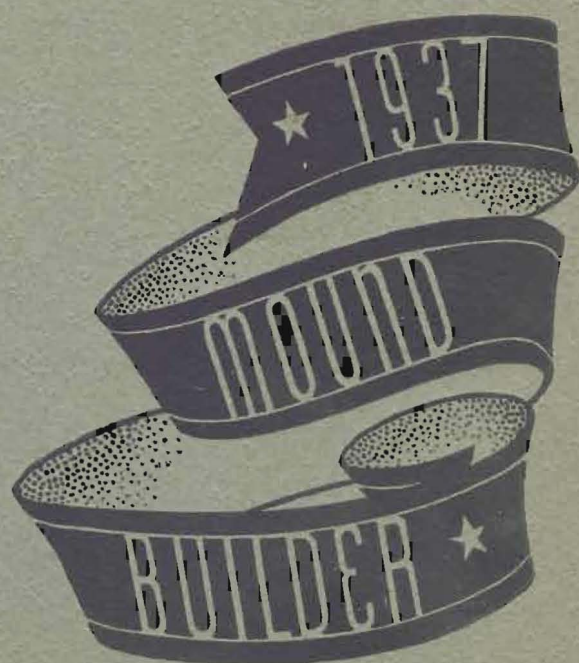


LOIS CARSON



REYNOLDS BINDERY — 1703 Laver — Kansas City, Mo.

# COPYRIGHT

•  
LOWELL N. MILLER  
Editor

M. D. HOLMES  
Business Manager







1937

# MOUNDBUILDER

● PUBLISHED BY THE  
STUDENT BODY OF  
SOUTHWESTERN COLLEGE  
AT WINFIELD, KANSAS

●

# DURING THE YEAR

. . . . . we have tried to catch the spirit of the campus as the camera sees it. What we failed to get is for you to carry with you in your memory. What you failed to get might possibly be found herein

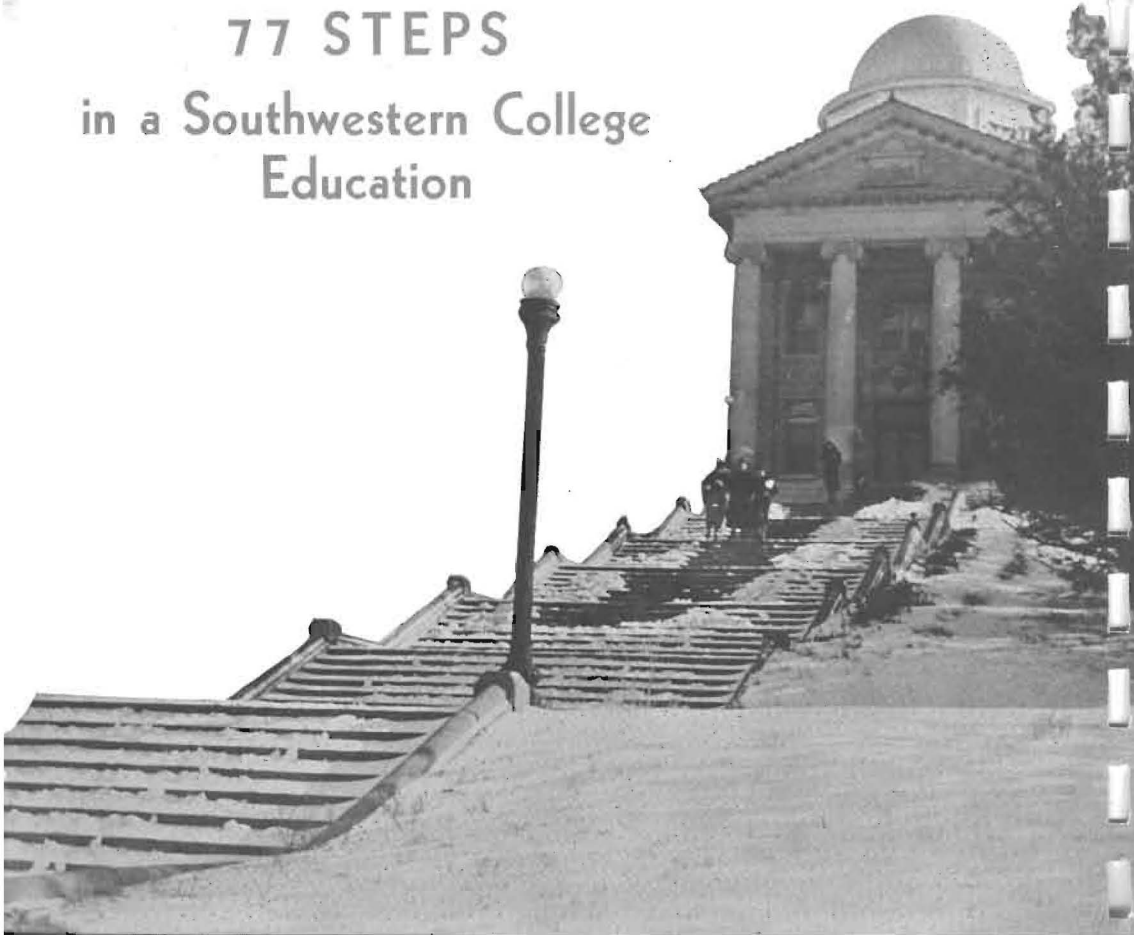
. . . . . as you turn the pages of this book you may see a picture of yourself which you did not know was taken. Just remember that others who see this picture may be impressed with the life at Southwestern because you acted your part as the shutter clicked

. . . . . and if the camera did not record you faithfully—don't blame the lens, the film, or the snap-shooter—he tried to get you in a natural pose

. . . . . pass on your book. Let others see you as you have been seen. Show them that, though a college may be small in size, it is large in spirit and understanding

. . . . . above all, never forget that there will always be . . . . .

**77 STEPS**  
in a Southwestern College  
Education







Richardson Hall



## Our President

THE man who has made Southwestern. He came to this college as the youngest president in the United States in the year 1905. In thirteen years of hard work, he built Richardson Hall, raised two hundred thousand dollars endowment, and placed the college out of debt. He left S. C. to become president of Morningside College in Sioux City, Iowa, in 1918. Returned in 1931 to clear the college here of another four hundred thousand debt. Has reduced it to one hundred and ninety thousand, and hopes to balance the books by 1940. He has also asked for and received an extra thirty-five thousand dollars endowment.



FRANK E. MOSSMAN, A. B., A. M., D. D., LL. D.

## The Dean

Dean of the College, editor of Social Science, instructor in Bible, Dean Leroy Allen attends to his multitude of tasks with admirable efficiency and unfailing kindliness.



LEROY ALLEN, PH. B., A. M., S. SC. D.





*N. Y. A. workers earn part of their educational expense at jobs like the one pictured above.*

## **Division of Social Science**

WITH a view to increasing the efficiency of Southwestern College, the administration introduced the divisional system in the fall of 1935. The successful functioning of an educational institution requires the integration and coordination of its various groups. With this aim the committee in charge grouped into one division those subjects which were similar in nature, method, and content. By such grouping it was found possible to increase the degree of cooperation among departments within a division, and also to provide greater opportunity for correlation among the divisions.

The three divisions established were: Language and Literature; Natural Science; and Social Science.

The Social Science Division, headed by Miss Ada Herr, is composed of the departments of Bible and Religion, Economics and Business Administration, Education and Psychology, History and Political Science, and Sociology.

A study course listed in the catalog for the department of Bible and Religion reveals the purpose of that department to develop an appreciation for Biblical literature and its personal and socio-ethical values; to form habits of careful thinking in the realm of religious problems; to challenge an inspiration that will deepen and broaden personality and make it vital in serving the present age in the light of the highest ideals possible to human kind.

The department of Education not only renders service in helping students to acquire an adequate understanding of the most recent educational processes, but through its placement bureau it performs a most valuable service in fitting prospective teachers in positions where they are enabled to render the maximum of service.

The History, Economics, Business, and Sociology departments have a unified purpose which they are trying to attain from their various angles of approach. They believe the study of human relationships is a matter of strategic importance at the present time. Since this is an age of unprecedented material development, which has put almost unlimited power into

the hands of man; and because we have a highly individualistic philosophy, and an ethic of relativity; and because of the uncertainty which always accompanies a highly transitional state of society; we believe that thorough training in a disinterested study of problems of human relationship is a crying need.

The various departments in this division unite in giving special opportunity for a clearer understanding of religious, educational, political, economic and social situations, not only by lectures, special papers and text material, but also by class room discussion and by questionnaire methods.

Every effort is made to interest students in local and world problems through extra-curricular organizations. Of these the most effective are the Social Science Club, The International Relations Club, and the Pi Gamma Mu.

The Social Science Club, in its monthly meetings, emphasizes problems which are primarily national in character, reserving for the International Relations Club, which also meets once each month, the treatment of topics in the field of international relations.

The aim of the clubs is two-fold: Firstly to encourage students to read widely, think deeply, and to express themselves on social questions. To further this end, a period in each meeting is devoted to open forum discussion. On some occasions, special speakers are engaged to address the clubs. At other times, selected students direct the meetings in round table and panel discussions. Secondly, the clubs seek to bring to the campus, whenever possible, speakers whose lectures and personalities will provoke the thought and discussion referred to above.

The International Relations Club is part of a nation-wide organization of clubs, united in a movement for furthering international understanding and peace.

This movement is under the general sponsorship of the Carnegie Endowment of New York.

Officers of the Social Science Club for this year were: Wilbur Ritter, President; Robert Friend, Vice-President; and Ruby Sheldon, Secretary. The International Relations Club was headed this year by Leonard Cowan, President; Roland Elliott, Vice-President; and Viola Hink, Secretary. Professor Walter E. Boles, Jr., is faculty sponsor for the clubs. Each club meets once every month. Meetings were held this year on Friday evenings at seven o'clock in the Student Union.

For the nature and activities of Pi Gamma Mu see page 78 of this book.



MISS ADA HERR

Miss Ada Herr, head of the Social Science Division, and professor of Sociology has served Southwestern College for nineteen years. Students work hard in her department. It is not uncommon for them to write four comprehensive papers during one semester. But even this does not alter the fact that her classes are very popular and usually crowded. No student has yet been able to question the authenticity of her statements in class.

## Division of Natural Science

A VITAL division in Southwestern is that of the Natural Sciences. Everyone realizes the importance of science and its contributions to modern civilization, and especially are Southwestern students conscious and appreciative of its importance as a result of the splendid training received in the division.

With Dr. Albright as chairman, the division which includes women's athletics, college athletics, home economics, chemistry, biology, mathematics and geology, is assuming its proper place in training students for future civilian leadership.



DR. PENROSE ALBRIGHT

The general object has been to teach students about their physical selves and the material world in which they live, and to infuse in them the appreciation of science, its methods, and its effect upon humanity.

Southwestern trains professional scientists who will continue their studies in graduate school toward advanced degrees, such as Doctor of Medicine and Doctor of Philosophy. A large number of former students have become successful physicians, applied scientists, and pure scientists. A vast number have entered high schools to teach science.

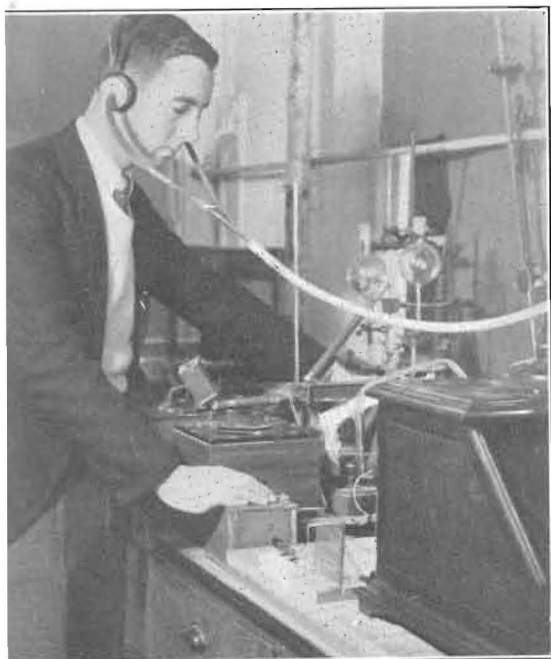
Another activity of the division is to provide physical training for able-bodied freshmen and sophomores of the college and the regular varsity teams for inter-collegiate sport.

This division also provides two years of engineering training for those students who wish to continue their training in an engineering school the last two years.

Students are allowed to take part in the advancement of science by the contribution of original research. The plan is to give work to students in the department who wish to take honors in their major field. At present there are four students working for honors.

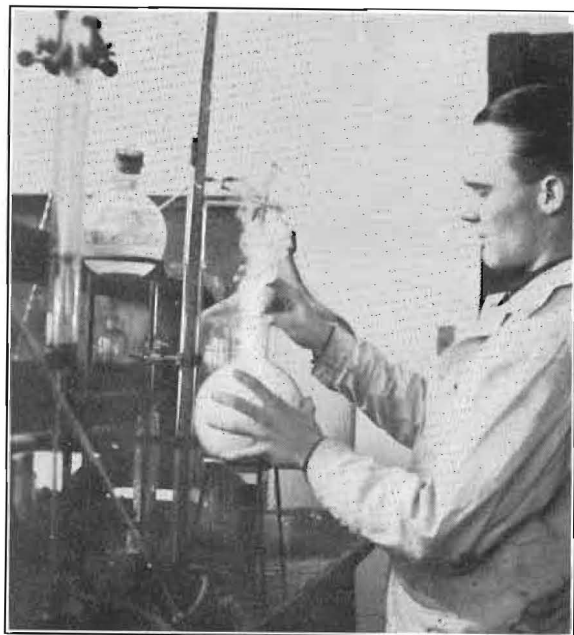
Professor Lawrence Oncley heads the Chemistry department. His courses are known for their exceptional thoroughness. The course in beginning chemistry is one of the most popular given in the college, as is shown by the large number of students enrolled.

The geology department is under the supervision of Professor R. B. Dunlevy. Each year the members of the geology classes take trips into neighboring states. A 1,600-mile trip, with Carlsbad



*Student at work on his honor study project in Physics*





*At work in the chemistry laboratory, North Hall*

Caverns as the chief attraction, was taken during Easter vacation this year.

The Biology department is headed by Dr. C. E. Burt. Pre-medical students, as well as those who wish to do advanced work in more purely biological fields, receive a large part of their training in this department.

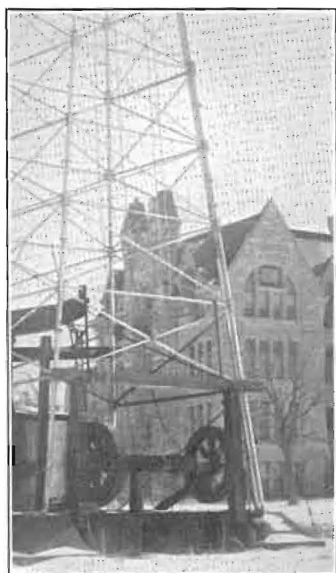
The closely related departments of Physics and Mathematics are directed by Dr. Albright and Dr. Plum, respectively. A large number of the finest scientific

workers graduated from the college have done their major work in one or both of these departments.

The Home Economics department is headed by Chalcea White and Helen Evers. It is divided into the departments of food and clothing.



*Afternoon class in foods*



*Students study oil development on the campus*

Six years ago five oil wells were drilled on the campus and four were good producers. Not until this spring, when the derricks were torn down, did the huge engines stop their spasmodic coughing. Everything is so silent now that students miss the creaking sound of the walking beams and the half-muffled "pfud" of the engines, as they go to sleep at night.



*Dramatics, Journalism, and the proper use of the Library aid students in the Literature Department. Professors at a party. Dr. Marsh, head of the division, and Charles Herring (not asleep) who has charge of the freshman composition classes.*

## Division of Language and Literature

HEADED by Dr. T. Reese Marsh, the Division of Language and Literature provides one of the biggest fields for student participation of any department in the college. This division is made up of eight departments, coordinated to make a field of study and activity which is chosen by a large per cent of the students as a major.

Assisted by Mr. C. I. Vinsonhale, Mr. Charles Herring and Miss Mary E. Wood, Dr. Marsh is in charge of the English department. Starting with freshman composition, the required freshman English course, an excellent foundation may be acquired for graduate work in English for those who wish "to follow knowledge like a sinking star". Those who are content with less

profound, but nevertheless searching and thought-provoking knowledge, can find more than enough to keep them interested.

The English Club, the membership of which is made up of English majors and others interested, has presented several unusual programs this year, at its monthly meetings. Dr. Kenneth W. Porter, Southwestern history professor and a contemporary poet of note, provided an afternoon of first hand information on poetry writing. Perhaps the most unusual meeting was that held with Dr. Y. Z. Chang, of the University of Michigan, lecturing on the Oriental in English literature. A new feature of English Club work this year was the forming of small groups within the club for the purpose of more carefully studying poetry, drama, novels and creative writing.

Dramatic productions become truly dramatic and are given with a professional touch when presented on the Southwestern stage under the direction of Miss Helen Graham. The Campus Players, made up of the best stage talent in the college, present two plays each year. Among the most popular ones given recently were "Romeo and Juliet", "The Dark Tower", and last fall's production, "The Bishop Misbehaves".

Professor C. I. Vinsonhaler, freshman composition and Latin teacher, has become a means by which Southwestern students enjoy reading the Latin classics. French students are probably the most wide awake in class of any in school. When Miss Emily Ericsson addresses her would-be Frenchmen in class, she often expects them to reply in French, and that keeps one awake. Spanish classes are also taught by Miss Ericsson, and Miss Wood teaches German, in addition to freshman English.

The Romance Language Club, sponsored by Miss Ericsson, furthers interest in the Romance Languages. The membership is small, but the group holds informal, interesting meetings, and presents such unusual features as five-minute speeches in French.

Probably the most industrious people in the library on Monday and Wednesday nights are those seated around the table on which are stacks of reference books. "Procrastination is the thief of time"—the reason for the mad scramble in order to have a prepared library lesson. This course is one of the most useful offered at Southwestern. Assignments in which it is necessary to use the library tools carefully acquaint students with all parts of the library and its equipment.

This year, more than ever before, Southwestern justified its title of "The Debate Capital of the United States," when five debate tournaments were staged here under the direction of Dr. J. Thompson Baker, head of the speech department. Forensics and speech courses are some of the most popular ones offered, and they provide a wide field for student participation. Evidence of this was the forensic tournament held here in December, in which 57 colleges from 10 states sent speakers. There were over 600 debate people here for the two-day meet.



*Left: DR. T. REESE MARSH, Head of the Division of Language and Literature.*





LUTHER O. LEAVENGOOD  
*Dean of the College of Music*

## The College of Music

MUSICAL organizations in Southwestern's fine arts department have won acclaim for the college in many ways. The band, orchestra, choir, string quartet and trio, as well as individuals, have contributed to make the department one of excellence. Dean Luther O. Leavengood, new to Southwestern this year, maintained the standard of work and improved the effectiveness of the department by his successful direction of the "Elijah" and his inauguration of the musical vesper services.

Perhaps the outstanding performance of the year was that given by the chorus of 450,

orchestra of 50, and the four soloists in the annual "Elijah" under the direction of Dean Leavengood. Miss Georgia Graves, contralto from New York City, Prof. Melvin H. Geist, tenor, and Miss Ida Clawson Hunt, soprano from Winfield, appeared as soloists with Mr. Paul Oncley from New York, who sang the title role of "Elijah." The oratorio was given as the second number on the artists' course at the time of the Inter-High School music contests in March. This annual contest was the largest this year of any in the history of the event, with more than 2,000 students from Kansas and Oklahoma towns taking part.

Under the direction of Prof. C. O. Brown, the band this year has been an indispensable part of the school. Its concerts, in Winfield and other towns, are well attended, and it is always in demand for student pep rallies and assemblies. It plays at all football and basket ball games, adding pep and enthusiasm to the contests.

Southwestern's A Cappella choir is a group which has become an institution in the school. Since its organization the purple-robed singers have presented the best in unaccompanied choral music. They appear each Wednesday in the regular chapel service and go on tour once each year. Prof. Melvin H. Geist, also new to Southwestern this year, has directed the choir.

Prof. H. H. Loudonback's Annual Piano Music Festival attracts many accomplished pianists who compete for the scholarships of piano lessons offered the winners. The Symphony Orchestra, directed by Dean Leavengood, played two concerts this year in addition to appearances on other programs at commencement and high school senior day. The group of about fifty players has at its disposal the best in musical literature from the college music library.

Three numbers were offered on the artists' course this year, the first being the Mexican Tipica orchestra. These players, dressed in brilliant native costume, provided two hours of music and dancing which was unusual and artistic from every standpoint. Frank Mannheimer, English concert pianist touring in this country, presented a program displaying unusual technique and artistry as the final number on the course.

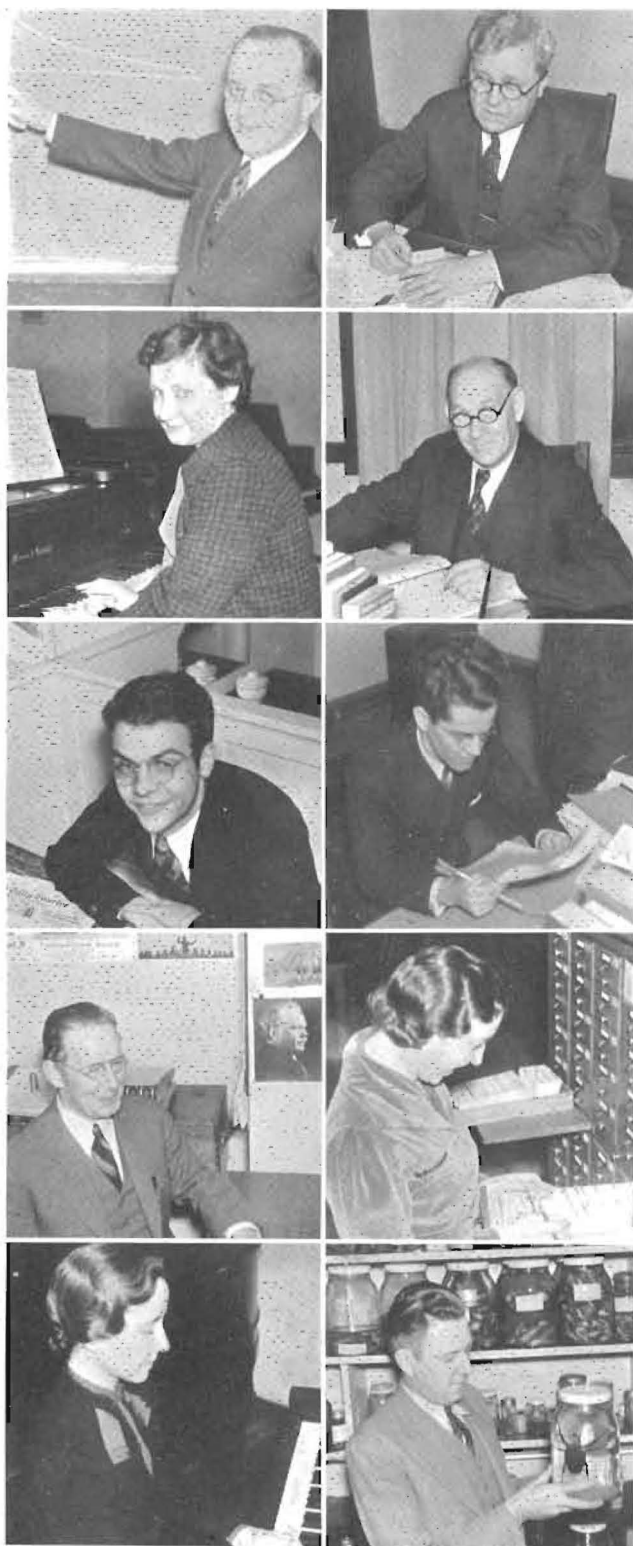
National Music Week was observed by Southwestern with six days of musical programs. The last of the musical vespers series was played on May 3. The following night a concert was presented by the Symphony Orchestra, and the next night Grace Sellers and Frances Ambrose played one of their popular duo-piano programs. James Bock, advanced student, appeared in a violin recital May 6. Under the direction of Prof. C. O. Brown a band concert was presented by the combined bands of Southwestern, St. John's college and Winfield high school. The concluding event of the week was the annual Piano Festival with about 300 pianists playing a program in unison.



Above is pictured the choir of the First M. E. Church, directed by Ida Clawson Hunt. The Piano Culture class sponsored by Prof. H. H. Loudonback is shown below.

# ◆ THIRTY-SEVEN

Dear Lois,  
 I'm wishing you luck &  
 success as a good p'l school  
 teacher. What about  
 stunged this? We should get  
 together next year because  
 I can't get all of our fighting done at home.  
 Love, Ruth



*The Moundbuilder photographers here present the faculty—at work! The usual run of formal portraits has been discarded this year. We hope you catch the spirit of the college in this pictorial story of their duties.*

# Faculty

PENROSE S. ALBRIGHT, B. S., M. S., Ph. D.

*Professor of Physics; Chairman of Natural Science Division*

From his department have gone out many brilliant graduate students.

LEROY ALLEN, Ph. B., A. M., S. Sc. D.

*Dean of the College of Liberal Arts, Professor of Bible*

National founder of Pi Gamma Mu, Social Science Honor Society.

FRANCES AMBROSE, Mus. B., B. A.

*Instructor in Piano*

Gives annual piano-duo concert with Grace Sellers.

J. THOMPSON BAKER, B. L., Ph. M., Ph. D.

*Professor of Public Speaking*

Directs every year one of the largest debate tournaments in the United States.

JAMES BOCK

*Assistant Instructor in Violin*

A brilliant violinist who serves as instructor before gaining a degree from South-western.

WALTER E. BOLES, JR., B. A., M. A.

*Assistant Professor of Economics*

Has built up an efficient department of business administration.

CHARLES O. BROWN, Mus. B.

*Professor of Instrumental Music*

Conducts a snappy pep band throughout the year.

EDITH M. BRAINARD, B. A., M. A., B. S.

*Instructor and Librarian*

Has revised the library system during the year.

E. MARIE BURDETTE, Mus. B.

*Instructor in Piano*

Is "our music teacher" to many school children every year.

CHARLES EARLE BURT, B. S., M. S., Ph. D.

*Professor of Biology*

A nationally recognized authority on reptiles and amphibians.



# Faculty

LILLIAN CLOUD, B. A.

*Instructor in Physical Education*

Took over the duties of the Dean of Women for the second semester.

DON COOPER, B. A.

*Instructor in Physical Education; Assistant Coach*

Was appointed head coach of football upon the resignation of William Monypeny.

EDITH DIELMANN, B. O.

*Instructor in Expression and Dramatics*

Director of the popular dramatics organization, the Leneans.

FERN DIELMANN, Mus. B.

*Instructor in Piano*

An artistic amateur photographer.

ROBERT B. DUNLEVY, B. L., M. A.

*Associate Professor of Geology*

Has served Southwestern longer than any other faculty member.

EMILY ERICSSON, A. B., A. M.

*Assistant Professor of French and Spanish*

Jabbers French like a native.

HELEN F. EVERS, B. A., M. S.

*Assistant Professor of Home Economics*

Had charge of all important banquets during the year.

MELVIN H. GEIST, Mus. B.

*Professor of Voice*

Directs the A Cappella Choir.

HELEN GRAHAM, B. A.

*Assistant Professor of Expression and Dramatics*

Directs at least five major stage productions each year.

ADA M. HERR, B. A., M. A.

*Professor of Sociology; Chairman of Social Science Division*

Leading force in the campaign to better the social conditions of the less fortunate citizens of Winfield.



*Who said faculty members were any different from ordinary people? Some like to be photographed (notice the smile), while others are as self-conscious as little kids. Informally they are a swell group of people to deal with.*

## ◆ THIRTY-SEVEN



*It is not uncommon to see a professor with a Ph. D. degree pull out a dollar watch a few minutes before the close of his lecture on Labor vs. Capital.*

# Faculty

CHARLES A. HERRING, B. A., M. A.

*Assistant Professor in English*

Faculty sponsor of the Collegian.

IDA CLAWSON HUNT, Mus. B., M. S.

*Professor of Public School Music*

Sang soprano role in the Elijah for the second year.

MRS. HAZEL JEFFERIES, A. B.

*Instructor in Secretarial Science*

Secretary to the President.

LUTHER O. LEAVENGOOD, B. M., Mus. M.

*Professor of Violin; Dean of School of Fine Arts*

His successful first year at Southwestern was climaxed by his capable direction of the annual "Elijah."

HENRY H. LOUDENBACK

*Professor of Piano*

Conducts an annual Piano Festival at Southwestern.

T. REESE MARSH, B. A., Ph. D.

*Professor of English; Chairman Language and Literature Division*

Originated the English Club.

DALE C. MARCOUX, B. S.

*Instructor in Business Administration*

A very popular first year teacher.

WILLIAM M. MONYPENY, B. S., M. A.

*Assistant Professor of Physical Education; Director of Athletics*

Has produced three successive champion basket ball teams.

LAWRENCE ONCLEY, B. A., M. A.

*Professor of Chemistry*

President of the Kansas Academy of Science.

WILLIAM BYRLE PLUM, A. B., A. M., Ph. D.

*Associate Professor of Mathematics*

Recently appointed Dean of Men.

# Faculty

KENNETH W. PORTER, A. B., M. A., Ph. D.

*Assistant Professor of History and Political Science*

Author of two books and many published poems.

WILLIAM J. POUNDSTONE, B. A., M. A.

*Associate Professor of Education; Registrar*

President of the C. I. Conference.

CORA MOORHEAD-REDIC

*Professor of Organ and Theory*

Campaigned for a new organ in Richardson Hall.

WEBSTER P. REESE, B. S., M. S.

*Professor of Education; Dean of Men; Dean of Summer Session*

Originator of the popular Counselor system.

GRACE SELLERS, Mus. B.

*Instructor in Piano*

Sellers-Ambrose Duo-Piano team and the "Blue Danube."

REGINA SPEAR, B. S.

*Instructor; Assistant Librarian*

She serves distracted students with sympathetic courtesy.

MERLE M. STEINBERG, Mus. B.

*Instructor in Piano*

Organist of First M. E. Church.

C. I. VINSONHALER, B. A., M. A.

*Associate Professor of Latin and English*

Loves to make gardens and furniture.

CHALCEA WHITE, B. A., M. A.

*Assistant Professor of Home Economics; Dean of Women*

Attended Columbia during the second semester.

MARY ELIZABETH WOOD, B. A., M. A.

*Instructor in English and German*

Authority on medieval manuscript illumination.





Regina Speer

*The new generation has learned not to fear the teacher. And Southwestern is especially proud of the fact that students and teachers walk across the campus together discussing modern problems or swapping the latest jokes.*

# ◆ THIRTY-SEVEN



E. W. McNEIL, A. B.  
Field Secretary  
*Has charge of all Student loans*

WILLIAM T. WARD  
Business Manager  
*Handles all college funds*

## Administration Assistants

**B**ELOW are the administration assistants who carry on the work of the college and keep the students properly housed.

Southwestern has five dormitories, three for girls and two for boys. Each dorm has a house mother who sees that the students get in on time and do not wreck the house. These Matrons are: Miss Deyo of Smith Hall; Mrs. Cobb of East Hall; Mrs. Osen of Allison Hall; Mrs. Hildinger of Hestwood House; and Mrs. Casburn of Holland Hall.

Mr. Detter is custodian of Richardson Hall; Mr. Kitzelman, custodian of Stewart Field house and the campus; Miss Hill, secretary to the Registrar; Miss White, secretary to the Dean of Fine Arts; Miss Ina Loper, secretary to the Dean of Liberal Arts; Mrs. Jefferies, secretary to the President; Miss Thomas, secretary to the Field Secretary; Mrs. Reese, Secretary of Placement Bureau; Miss Stout and Miss Ayers, assistants to the Business Manager, and Miss Mulvaney, secretary to Dean of Women.



HILDINGER, DEYO, WHITE, REESE, KITZELMAN, DETTER  
OSEN, CASBURN, COBB, JEFFERIES  
HILL, STOUT, THOMAS, MULVANEY

Hi Lois,  
Remember all the  
sweet time - the  
dream come and stuff  
Two long years long your eyes



EBRIGHT      MILLER      HOLMES  
                 PIKE      AYERS      DEEVER

## Senior Officers

<i>First Semester</i>		<i>Second Semester</i>
M. D. HOLMES	President	LOWELL MILLER
FRANK EBRIGHT	Vice-President	MERWIN DEEVER
MILDRED PIKE	Secretary-treasurer	MILDRED AYERS

My, how times does fly! It seems only yesterday that we first arrived on "Sunset Hill," and oh, what a thrill it was! The rush parties . . . the new teachers . . . the friendliness of old students . . . the football games, and all the joys of college—these were new and exciting to us.

A year slipped by and we were "sophisticated sophomores." We were the most important group on the campus then—we knew everything—to attend college for two more years would be futile, for what more could we learn? But fall came, and we began to wonder if we still couldn't learn something from college. We were hard-working juniors then, and knowledge, not grades, became our objective.

And now, we are seniors! Four short years have taught us how little we really know. We have learned many things. We have seen Southwestern grow and improve, and in our own small way, we have tried to contribute to that growth.

We leave, true Builders, proud of Southwestern and the things it has taught us. Among us will be found doctors, lawyers, housewives, and educators of tomorrow. And as we join youth the world over, we take with us treasured and vivid memories of our pleasant years spent on the campus of the purple!

—DUNBAR MCLAURIN.

## Seniors

### PHIL ANTRIM, *Spivey*

Pre-Medic; Delphi; Student Council; Biology Seminar.

### MILDRED CRANE AYERS, *Winfield*

Business Administration; Belles Lettres, Treasurer, Vice-president, and President; Secretary, Senior class; Jinx Janes; Inter-Society Council; Personnel Counselor.

### BOB BALTZELL, *Lincoln, Neb.*

Physical Education; Pi Sigma Phi; Football Captain; All-conference Captain 1936.

### EARLENE BASORE, *Valley Center*

Home Economics; Sigma Pi Phi; Personnel Counselor; Gamma Omicron; Jinx Janes.

### ELSIE BATY, *Plains*

Home Economics; Kappa Omicron Phi, President; Gamma Omicron; Aurora, Secretary; Personnel Counselor; Student Council; Cosmopolitan Club, Secretary; Epworth League Cabinet, First Vice-president; Jinx Janes.

### PAUL BRANINE, *Wichita*

Business and Education; Delphi; Phi Epsilon Pi; Senior Counselor; Band; Intramurals; Track; Social Science Club.

### WAYNE BROOKS, *Geuda Springs*

Business Administration.

### ROBERT BURDEN, *Burden*

Mathematics; Laconia; President, Sophomore class; Business Manager, Campus Players; Rush Captain, Laconia; Cheer Leader; Band; Orchestra; A Cappella Choir; Phi Epsilon Pi; Program Chairman, Laconia.

### RALPH CALVERT, *Winfield*

Chemistry and Mathematics.

### JACK CORNISH, *Arkansas City*

Chemistry and Biology; Orchestra.

### LEONARD COWAN, *Beaver, Okla.*

English; Delphi; S. C. M., President; Social Science Club; Phi Epsilon Pi; Personnel Counselor; Collegian Staff; International Relations Club, President.

### CHARLES CURTISS, *Beeler*

Biology and English; Delphi; English Club, President; Vice-president, Pi Gamma Mu; President, Cosmopolitan Club; Editor, Collegian; Assistant Editor, Fledgling; Mound-builder staff; Student Council; Who's Who; Biology Seminar; Co-chairman, S. C. M.; Social Science Club.

### ROBERT S. DAVIDSON, *Mountain View, Mo.*

Instrumental Music; Laconia, President; Manager, A Cappella Choir; Epworth League President; Band; Orchestra; English Club; Elijah Orchestra.

### MERWIN DEEVER, *Maize*

Sociology; Delphi; Phi Epsilon Pi; A Cappella Choir; Student Council; Vice-president, Senior Class; Vice-president, Delphi; Varsity Basketball; Intramurals; Male Quartet; S. C. M.; Oxford Club.

MOUNDBUILDER ♦

Canopy  
ragging  
is rather  
unique  
don't you  
think?  
It all seems  
I better go  
home to  
supper  
every  
that Smith  
is closed  
so I'll  
have to  
stave  
now  
Canopy

## Seniors

JOSEPHINE DEYO, *Winfield*  
Sociology.

MAXINE DOTY, *Caldwell*  
Home Economics; Sigma Pi Phi; Gamma Omicron; Kappa Omicron Phi; S. C. M.

HELEN DUCKWORTH, *Spivey*  
Home Economics; Belles Lettres; Gamma Omicron, President.

FRANK EBRIGHT, *Independence*  
English; A Cappella Choir; Gospel Team; Oxford Club, President; Vice-president, Epworth League; Vice-president, Senior Class; Chairman, Chapel Devotional Committee.

VICTOR EDGELL, *Syracuse*  
Sociology; Delphi; Pi Gamma Mu; English Club; A Cappella Choir; Varsity Track; Intramurals; Social Science Club; Grace Church Choir.

ROLAND ELLIOTT, *Winfield*  
English; Delphi; Band; English Club; Vice-president, International Relations Club; Epworth League Cabinet; Business Manager, Fledgling; Social Science Club; Grace Church Choir.

ELIZABETH ESLINGER, *Kinsley*  
Music; Sigma Pi Phi; A Cappella Choir; S. C. M.; Elijah.

LESLIE FERGUSON, *Arkansas City*  
Chemistry.

CHARLES FOILES, *Altoona*  
Chemistry; Physical Science and Math Club; Social Science Club; S. C. M.; P. K. Club.

CLIFFORD FOULK, *Turon*  
History; Delphi; English Club; Intramurals.

MAXINE GILMORE, *Bartlesville, Okla.*  
Public Speaking and English; Belles Lettres, Treasurer; Pi Kappa Delta, Secretary; Honorary Drum Major; Jinx Janes.

CARL GORDON, *Winfield*  
Chemistry; Honors Study in Chemistry; Debate.

RICHARD GUNCKEL, *Sapulpa, Okla.*  
Education.

ROLAND GUNN, *Hutchinson*  
Instrumental Public School Music; Athens; Band; Orchestra.

◆ THIRTY-SEVEN







*Just an  
old "Spine Auto"  
Piano Journal*

## Seniors

OLIVE HANKS, *Hutchinson*

Education; S. C. M.; Oxford Fellowship;  
Social Science Club.



RAYMOND HENDERSON, *Harper*

Music; Athens; Orchestra; A Cappella Choir;  
Male Quartet; String Choir; String Ensemble.

WESLEY HODGES, *Liberal*

History; Delphi; Phi Epsilon Pi; English  
Club; Epworth League Cabinet; A Cappella  
Choir.



WAYNE HOLECEK, *Burns*

Business Administration; Delphi; Pi Gamma  
Mu; Phi Epsilon Pi; Treasurer, Delphi; Intra-  
murals.

WILLIAM CALVERT HOLLIBAUGH, *Winfield*

Chemistry and Mathematics; Laconia, Dicta-  
tor; Phi Epsilon Pi; Leneans; Student Council;  
Inter-Society Council; Society Plays.



M. D. HOLMES, *Hanston*

Business Administration; Delphi; Pi Gamma  
Mu; Phi Epsilon Pi; President, Senior Class;  
President, Personnel Counselor; Assistant in  
Economics; Cosmopolitan Club; Intramurals;  
Vice-president, Delphi; Business Manager '37  
Moundbuilder; Master Builder.

STEVE JOHNSON, *Copeland*

Public Speaking and Business Administra-  
tion; Delphi; Phi Epsilon Pi; Leneans; Cosmo-  
politan Club; Debate; Intramurals.



LEO JONES, *Johnson*

Public Speaking; Epworth League Cabinet;  
Y. M.; Treasurer, Cosmopolitan Club; Social  
Science Club; Oxford Fellowship; Oratory; Per-  
sonnel Counselor; Track.

WINIFRED JONES, *Winfield*

English; Sigma Pi Phi, President, Vice-Presi-  
dent; Moundbuilder Queen; Who's Who; Master  
Builder; Pi Gamma Mu; Cosmopolitan Club,  
President, Secretary; English Club; Mound-  
builder Staff; Collegian Staff; Secretary, Junior  
Class; Jinx Janes; Student Council, Secretary;  
Inter-Society Council; Orchestra.



WENDELL LAKE, *Lake City*

Chemistry; Delphi, President; Delphi Honor  
Page; Leneans; Physical Science Seminar; Phi  
Epsilon Pi; Inter-Society Council; Band; Track;  
Intramurals; Personnel Counselor.

CHARLOTTE LANDON, *Bishopville, Md.*

English; Sigma Pi Phi; English Club; Cosmo-  
politan Club; A Cappella Choir; Little Theatre.



ELINOR LAWRENCE, *Hutchinson*

Social Science.

FRANCES E. LAWSON, *Arkansas City*

Home Economics.

FRANCES LENT, *Coats*

Public School Music; Sigma Pi Phi; Cosmo-  
politan Club; A Cappella Choir; S. C. M.  
Cabinet; Piano Culture; E. L. Cabinet; Elijah.

**MOUNDBUILDER** ♦

## Seniors

GEORGE MAJOR, *Valley Center*  
Chemistry; Laconian; Phi Epsilon Pi.

GENE MANNY, *Winfield*  
Business; Laconia.

LOREN MATTHEWS, *Winfield*  
Music, History; Delphi; Phi Epsilon Pi;  
Band; Orchestra; A Cappella Choir; Collegian  
Staff; Social Science Club; S. C. M.; Church  
Choir; International Relations Club; Clarinet  
Quartet; College Quintet; Elijah.

LLOYD MAXWELL, *Douglass*  
Business Administration.

DUNBAR McLAURIN, *Langston, Okla.*  
Economics and Business Administration;  
Social Science Club; Cosmopolitan Club; Ora-  
tory; Intramurals; Little Theatre Play; Mound-  
builder Staff; Collegian Staff; Band; Orchestra;  
Social Science Club; P. K. Club.

ADELAIDE MCNICHOLAS, *Pratt*  
Sociology.

LOWELL MILLER, *Peabody*  
History; Delphi, Critic; Campus Players; Pi  
Kappa Delta; Pi Gamma Mu; Phi Epsilon Pi;  
Student Council; Personnel Counselor; Presi-  
dent, Senior Class; President, Epworth League;  
Editor, Moundbuilder, 1936 and 1937; Master  
Builder; Who's Who; A Cappella Choir; Col-  
legian Staff; Fledgling; English Club, Secretary;  
Vice-president, Freshman Class; Orchestra; Ora-  
tory; Intramurals.

CLEO MILLIKEN, *Augusta*  
Home Economics; Sigma; W. A. A.; Jinx  
Janes; Gamma Omicron; S. C. M.

DOROTHY OLDROYD, *Arkansas City*  
Home Economics; Sigma; Secretary; Kappa  
Omicron Phi; Gamma Omicron; W. A. A.; S. C.  
M.; Personnel Counselor; Who's Who.

REBECCA ORTIZ, *Winfield*  
French; Cosmopolitan Club; Romance Lan-  
guage Club.

OPHELIA PALMER, *Winfield*  
Social Science; S. C. M.; Cosmopolitan Club.

RUTH ELNORA PARKS, *Winfield*  
Music; Sigma; Piano Culture.

HORTENSE PECK, *Augusta*  
Art and English; Sigma; Jinx Janes; English  
Club; Y. W. C. A.; S. C. M.; Secretary, Fresh-  
man Class; Assistant Art Editor, Fledgling.

MILDRED PIKE, *Ashland*  
Business Administration; Aurora, Regent; Pi  
Kappa Delta, President; Pi Gamma Mu, Presi-  
dent; Secretary, Senior Class; Homecoming  
Queen; K. K. Pep Club, Vice-president; Cosmo-  
politan Club, Treasurer; Student Council; Inter-  
Society Council; Social Science Club; Debate;  
Oratory; Master Builder.



## Seniors



R. DALE POMEROY, *Hugoton*  
Pre-Law; Laconia, President; Junior Class, President; Phi Epsilon Pi; Male Quartet; A Cappella Choir; Octette; Vice-president, Freshman Class; President, Sophomore Class; Elected Vice-president of Student Body; Festival Chorus; Band; Intramurals; Dramatics.



BILL PORTER, *Winfield*  
Business Administration; Pi Sigma Phi; Athens; President and Vice-president of Student Council and Student Body; Co-captain Basket Ball Team; Master of Ceremonies; Pi Gamma Mu; Who's Who.



JAMES ROBERTSON, *Winfield*  
Biology.



ARLEEN SCHMIDT, *Hutchinson*  
Music; Sigma Pi Phi; A Cappella Choir; Church Choir; Organ Club.



BETTY SMITH, *Kansas City, Mo.*  
English; English Club; Cosmopolitan Club; Romance Language Club; International Relations Club.



VICTOR SPONENBERG, *Winfield*  
Chemistry and Geology; Athens, President; Secretary, Honor; Phi Epsilon Pi, Pep Leader; Collegian Staff; Moundbuilder Staff; Inter-Society Council; Cosmopolitan Club, Treasurer; Intramurals.



RUTH STEWART, *Nan, Siam*  
Biology; Cosmopolitan Club, President and Vice-president; President, Gospel Team; S. C. M.; Oxford Fellowship, Secretary, Vice-president.

PAUL STITT, *Liberal*  
Pre-Medic; Delphi; Student Council; President of Sophomore Class.

MILTON STOCKING, *Winfield*  
Music; Delphi; Phi Epsilon Pi; Orchestra; Band; A Cappella Choir, Student Director; Male Quartet; French Horn Quartet; Intramurals; Student Council.

ESTHER STUBER, *Winfield*  
Home Economics; Belles Lettres, President; Pi Kappa Delta; Queen of May; Gamma Omicron; Jinx Janes, Vice-president; Inter-Society Council.

LOVELL STUBER, *Winfield*  
Physics, Chemistry, Mathematics; Laconia; Phi Epsilon Pi; Intramurals Boxing; Honors Work in Physics.

LAWRENCE STUDE, *Copeland*  
History; Delphi; Pi Kappa Delta; S. C. M.; Social Science Society; International Relations Club; Student Council; Debate; Oratory; Track; Intramurals.

ROBERT E. THOMPSON, *Medicine Lodge*  
Physics and Business Administration; Delphi, President, Treasurer, Rush Captain; Vice-president, Student Council; Master Builder; President, Junior Class; Co-head, S. C. M.; Secretary, Treasurer, Y. M.; Personnel Counselor; Vice-president, Phi Epsilon Pi; Intramurals.

EDGAR TRAUOGOTT, *Arkansas City*  
Economics; Varsity Basket Ball.

MOUNDBUILDER ♦

## Seniors

WENDELL W. WADE, *Winfield*

Chemistry; Delphi; Phi Epsilon Pi; Intramurals.

JOSEPHINE WILMER, *Winfield*

Sociology; Belles Lettres, Critic, Vice-president; K. K. Pep Club, President; Inter-Society Council, Secretary; Romance Language Club.

LOUISE YOULE, *Winfield*

Public School Music; Sigma Pi Phi; String Choir; Orchestra; English Club; Y. W. C. A.

GLEE YOUNG, *Pretty Prairie*

Home Economics; Sigma Pi Phi, President, Secretary, Rush Captain; Kappa Omicron Phi, Treasurer; K. K. Pep Club, Vice-president, Rush Captain, President; Gamma Omicron; Pi Kappa Delta; Student Council; Master Builder; English Club; Assistant in Foods Department; Personnel Counselor; S. C. M.; Inter-Society Council.

MRS. HARRIET BROOKS, *Winfield*

History.

THERMUTHIS JOAN HOSKINS, *Kiowa*

History and Education; S. C. M.; W. A. A.; Church Choir.

RUTH KENDALL, *Kiowa*

Education; S. C. M.; Y. W. C. A.; Elijah Chorus.

MILDRED LUTZ, *Winfield*

Education; A Cappella Choir.



## The Juniors

IN THE fall of nineteen hundred and thirty-four about two hundred "green" freshmen took up the long trek to "heights of knowledge" on College Hill. Some dropped out after a year or so, to go into business or to take special work, but the nucleus of that group, enlarged by students who entered later, has come at last to the final stretch. They are about to become seniors!

The Junior class of the past year has been competently led during the first semester by Bert Keller as president, Dorothy Dieterich as vice-president, and Marguerite Molz as secretary-treasurer; and in the second semester by Dorothy Dieterich as president, Florence McIntire as vice-president, and Bill Ritter as secretary-treasurer.

Members of the class not only have kept up a high standard of scholarship, but have also entered into extra-curricular activities, as well as enjoying an active social life. The chief social function of the class is the annual picnic which was started in the Freshman year at the painting of the "S", and which has been continued as a spring highlight for the past two years. These picnics are always looked forward to with a great deal of anticipation, and they are unusually well attended.

The past three years have been enjoyable ones, but none would go back to former good times when they can envision themselves as the Seniors and leaders of next year.

—KEITH FRANKS



Lois = You're a swell girl - & what  
interests me is how you play the  
cello - I have ambitions - I'd  
have enjoyed knowing you & hope  
to be in the **Junior cello section**  
next year - J. B.

MARGARET BAUMAN, *Fort Morgan, Colo.*  
Social Science; Belles Lettres; Cosmopolitan Club;  
English Club; Social Science Club.

CHARLES K. BAYNE, *Winfield*  
Geology; Laconia; Science Club; Student Assistant in  
Geology and Chemistry.

JOYCE BEAN, *Anthony*  
Public School Music; Sigma; Orchestra; Band; String  
Choir; Grace Church Choir.

VIRGINIA BENSON, *Winfield*  
Business and Physical Education; W. A. A.; Jinx  
Janes; Belles Lettres; Bulderettes, President.

JAMES BOCK, *Pratt*  
Violin; Faculty String Quartet; Assistant Instructor in  
Violin; Orchestra, concert-master; String Choir.

ROBERT BOLES, *Wilmore*  
Biology; Delphi, treasurer; Phi Epsilon Pi; President,  
Rooters' Club.

MARGARET BROADIE, *Ashland*  
Sociology; Sigma Pi Phi; Cosmopolitan Club; Social  
Science Club; Mexican Night School; S. C. M.

CAROLINE BROOKS, *St. John*  
Music; Sigma Pi Phi; Band; Orchestra; A Cappella  
Choir; K. K. Pep Club.

PAUL WILSON, *Winfield*  
Business Administration; Laconia.

ROBERT BROWN, *Winfield*  
Music; Athens; Band; Orchestra; Varsity Football  
and Track; Intramural boxing and basket Ball.

MARY ANN BROWNLEE, *Hutchinson*  
Home Economics; Belles Lettres; Jinx Janes; A Cap-  
pella Choir; Gamma Omicron.

LAURA BURNETT, *Caldwell*  
Dramatics; Speaking; Choir; S. C. M.; Biology  
Seminar.

HELEN CALLISON, *Norwich*  
Education; Oxford Fellowship.

MAUDINE CLIFT, *Winfield*  
Art; Jinx Janes; Aurora.

DON COE, *Wichita*  
History; Delphi; Cosmopolitan Club, President; Phi  
Epsilon Pi; S. C. M.; Student Council; Collegian Staff.

HELEN COOK, *Stafford*  
Journalism; Sigma.

EARLINE COOPER, *Liberal*  
Pre-Medic; Aurora, Regent; Cosmopolitan Club;  
Personnel Counselor; S. C. M.; Inter-society Council;  
Social Science Club; K. K. Pep Club, Secretary.

KENNETH COOPER, *Winfield*  
Speech; S. C. M.; Oxford Club; Gospel Team.

WYATT COOPER, *Hutchinson*  
Instrumental Music; Delphi; Band; Orchestra; English  
Club; Moundbuilder Staff; S. C. M.

RUTH CRESWELL, *Oil Hill*  
Education; Sigma Pi Phi; Jinx Janes; Romance  
Language Club.



## ◆ THIRTY-SEVEN

## Juniors

RUTH EILEEN CURRY, *Long Beach*  
History; Sigma Pi Phi; A Cappella Choir.

MURIEL DALKE, *Topeka*  
Business Administration and English; Belles Lettres; Jinx Janes; A Cappella Choir; Orchestra; Grace Church Choir.

DOROTHY DIETERICH, *Wellington*  
Social Science; Sigma; S. C. M.; Cosmopolitan; A Cappella Choir; Grace Church Choir; Mexican Night School; Social Science Club; Gamma Omicron; Jinx Janes; Counselor.

HARRIET ELLIOTT, *Plains*  
Social Science; Sigma; S. C. M.; Grace Church Choir; A Cappella Choir.

DOROTHY ENGLISH, *Cimarron*  
Music; Belles Lettres; Counselor; A Cappella Choir; Grace Church Choir.

HARLAN FISK, *Eldorado*  
Business Administration; Orchestra, Student Director; Band; Faculty String Quartet; Saxophone Trio.

KEITH FRANKS, *Winfield*  
History; Athens; Phi Epsilon Pi; Cosmopolitan English Club; S. C. M. Council; Student Council; Intramurals; Moundbuilder Staff; Pi Gamma Mu.

ROBERT FRIEND, *Rolla*  
Economics; Delphi; English Club; Vice-President Social Science Club; International Relations Club; Phi Epsilon Pi; S. C. M. Cabinet; Counselor.

MRS. ALEEN HENDERSON, *Winfield*  
English; Belles Lettres; Jinx Janes.

DON GOFORTH, *Winfield*  
Business Administration; Athens; President Phi Epsilon Pi.

STANLEY GRAHAM, *Winfield*  
Chemistry; Athens; Phi Epsilon Pi; Intramurals.

FAY GREEN, *Winfield*  
Chemistry; Athens; Pi Kappa Delta; Phi Epsilon Pi.

CHARLES HADLEY, *Winfield*  
Physics and Mathematics; Athens; Band.

LLOYD HARP, *Alden*  
Business Administration; Delphi Rush Captain; Pi Kappa Delta; A Cappella Choir; S. C. M.; Phi Epsilon Pi; Intramurals.

JUNE HAYS, *Winfield*  
Music; Sigma; Orchestra; Band; S. C. M.; Grace Church Choir; English Club.

RAY HENRY, *Kiowa*  
Geology; Football.

WALLACE HILFINGER, *Winfield*  
Business Administration; Laconia; Probation, Campus Player; Band; Debate; Dictator of Laconia.

VIOLA HINK, *Englewood*  
Social Science; Sigma; S. C. M. Council; Social Science Club; Secretary International Relations Club; Grace Church Choir.

EDGAR HINSHAW, *Winfield*  
Education; Pi Sigma Phi; Varsity Basket Ball; Intramurals; Track.

IDA HINSHAW, *Winfield*  
Home Economics; S. C. M.; W. A. A.

MOUNDBUILDER ♦

Dear Rais,  
I certainly haven't seen much of you since we  
"German days". It makes me feel badly, too - but I guess  
I'm not making a mistake to keep it in my mind - I think  
I'll be back to all those old friends soon.



## **Juniors**

ERNESTINE HODGE, *Hutchinson*  
Dramatics and French; Belles Lettres, Chaplain;  
Romance-Language Club, Sec.-Treas.; Cosmopolitan Club.

HARLEY HOLECEK, *Burns*  
Business Administration; Delphi; Phi Epsilon Pi.

MARIE JOHNSON, *Tonkawa*  
Home Economics; Sigma; Kappa Omicron Phi; Jinx  
Janes; A Cappella Choir; English Club; Gospel Team;  
S. C. M.

DAVID JONES, *Greensburg*  
Chemistry; Delphi; Band; Phi Epsilon Pi; Physical  
Science Club.

HUGH JONES, *Golden City, Mo.*  
History; A Cappella Choir; Athens.

MELBOURNE JONES, *Arkansas City*  
History and Government; Delphi; Oxford Club;  
S. C. M.

BERT KELLER, *Valley Stream, N. Y.*  
English and Dramatics; Delphi, Sec. and Critic;  
Phi Epsilon Pi; President, Romance Language Club;  
Gospel Team; Vice-Pres. Sophomore Class; President  
Junior Class; Student Council; Campus Players.

MARLYS KING, *Attica*  
Home Economics; Aurora; W. A. A.; Gamma Omicron;  
Builderettes.

LELA LIPPOLDT, *Kinsley*  
Home Economics; Sigma; Kappa Omicron Phi;  
Gamma Omicron; English Club; Jinx Janes; Personnel  
Council; League Cabinet.

MEREDITH MAYSE, *Ashland*  
Physics; Laconia; Football; Track; Intramural  
Boxing and Wrestling.

FLORENCE MCINTIRE, *Arkansas City*  
Social Science; Sigma; Pi Kappa Delta; Student  
Council; Cosmopolitan Club; Inter-Society Council; K. K.,  
Vice-Pres. and Rush Captain; Sec.-Treas., Freshman and  
Sophomore Classes; Vice-Pres. Junior Class; Personnel  
Council; Sigma, Vice-Pres.

KONRAD MODSCHIEDLER, *Winfield*  
Religion and Bible; Oxford Fellowship; Pi Gamma Mu.

MARGUERITE MOLZ, *Hardner*  
Home Economics; Belles Lettres; Kappa Omicron  
Phi; Gamma Omicron; A Cappella Choir; Jinx Janes;  
Orchestra; Student Council; Sec.-Treas., Junior Class.

ALTA MAE MORTON, *Winfield*  
French; Belles Lettres; Jinx Janes.

IRIS MULVANEY, *Wellington*  
English and Sociology; S. C. M. Council; Sigma;  
English Club; Cosmopolitan Club; Treas., College League;  
Chaplain Sigma Pi Phi.

ELIZABETH NEVINS, *Winfield*  
English and Dramatics; Sigma; English Club; Socia  
Science Club; Mexican Night School; A Cappella Choir;  
Grace Church Choir; President, Campus Players; Personnel  
Council; Jinx Janes.

FREDA NURSE, *Medicine Lodge*  
Social Science; Sigma; W. A. A.; Oxford Fellowship;  
S. C. M., Co-Chairman; Cosmopolitan Club; Grace  
Church Choir; College League Cabinet; Gospel Team;  
Estes Cooperative.

CLARK OWENS, *El Dorado*  
Speech; Laconia; Pi Kappa Delta; A Cappella Choir;  
Phi Epsilon Pi; Debate; Dramatics; Sec.-Treas., Laconia.

LOVINA PATON, *Oxford*  
English; Belles Lettres; Jinx Janes; Drum Major in  
Band.

ARTHUR PEITSCH, *Hampton, Nebr.*  
English and Mathematics; Phi Epsilon Pi.



## **Juniors**

DARRELL PETER, *Pawnee, Okla.*

Piano and English; President Piano Culture Class; Orchestra; Band; A Cappella Choir, President; Male Quartet accompanist; Grace Church Choir; President, College Epworth League; Campus Players; Personnel Counselor; Collegian Staff; Assistant in English Department.

FRANK POLITZER, *Brooklyn, N. Y.*

Chemistry; Delphi; Romance Language Club, Vice-President; Band; Intramurals; Math.-Science Seminar; Vice-President, Phi Epsilon Pi.

PAULINE PONATH, *Mulvane*

Latin; Belles Lettres; S. C. M.; W. A. A.; Builderettes; Collegian Staff.

GLADYS POST, *Winfield*

Sociology; English Club; Social Science Club.

FLOYD PRIEST, *Winfield*

Business Administration; Band.

WILLIAM RAMSDALE, *Centerville*

Physics; Delphi; P. K. Club; Epworth League Cabinet; S. C. M.; Phi Epsilon Pi.

WILBUR RITTER, *Hugoton*

History and Political Science; Sec.-Treas., Laconia; President, Social Science Club; S. C. M. Council; Student Council; Sec.-Treas., Junior Class; Phi Epsilon Pi; Pi Gamma Mu.

ALENE ROGERS, *Lake City*

Biology; Sigma.

JANE ROTH, *Bartlesville, Okla.*

English; Sigma; Jinx Janes; Speech Choir.

JACK SAVAGE, *Winfield*

Political Science; Athens; Band; Orchestra; Pi Kappa Delta; Drum Major.

GRACE SELLE, *Preston*

Public School Music; Sigma; S. C. M.; Band; A Cappella Choir; English Club; Grace Church Choir.

ELEANOR LEE SHOOK, *Augusta*

Pre-Medic; Cosmopolitan Club; Sigma; Jinx Janes; Collegian Staff; Organ Club.

LENA MARIE SIMPSON, *Garden City*

History; Sigma; Social Science Club; International Relations Club; Church Choir.

LYDIA STEINBRUECK, *Blackburn, Mo.*

Home Economics.

LOUIS TAYLOR, *Okemah, Okla.*

Instrumental Music; Laconia; Band.

MARJORIE THOMPSON, *Winfield*

Public School Music; Belles Lettres; Vice-President, English Club; Piano Culture Class; Editor, Collegian; M. E. Church Choir; Moundbuilder Staff.

MATTIE GRACE TRUMBULL, *Winfield*

Education; Sigma; President, K. K. Club; Cosmopolitan Club; English Club; Gamma Omicron; Epworth League Cabinet; Moundbuilder Staff; A Cappella Choir; Student Council; Assistant in Physical Education; Piano Culture Class; Head of Women's Physical Education Department of St. John's College.

LALA TULL, *Conway Springs*

Speech and Dramatics; Belles Lettres; Jinx Janes; English Club; S. C. M.

REBA TWYMAN, *Zenda*

Home Economics; Belles Lettres; Jinx Janes; Gamma Omicron.

BELLE VANNATTA, *Boise City, Okla.*

Home Economics; Belles Lettres; Jinx Janes; Gamma Omicron.

**MOUNDBUILDER** ♦

## **Juniors**

ELMO VAN VALKENBURG, *Danville*

Business Administration; Phi Epsilon Pi; Athens President; Band; A Cappella Choir; Orchestra; Male Quartet; Inter-society Council; Social Science Club; Grace Church Choir.

EDWARD WARNER, *Winfield*

Journalism; Athens; Moundbuilder Staff; Business Manager of Collegian.

KATHERINE WHITE, *Oil Hill*

Music; Orchestra; Collegian Staff; Piano Culture Class; Sigma Pi Phi.

DOROTHY WILSON, *Winfield*

Social Science; Aurora; English Club; A Cappella Choir.

WILLIS WISEHART, *Ashland*

Social Science; Oxford Fellowship.

BILL WRIGHT, *Zenda*

Business Administration; Athens; Phi Epsilon Pi; Football; Elijah.

EMAVEE WRIGHT, *Howard*

History; Jinx Janes.

RUSSELL YORK, *Liberal*

Business Administration; Delphi; Phi Epsilon Pi, Secretary-Treasurer.

MARY ZELSMAN, *Osawatomie*

English; A Cappella Choir.



I have always admired you, and it has long been my regret that I have not been able to cultivate your friendship. Perhaps there is still time to be as sweet just continue to you are and you can't lose.

Sincerely,  
Darrell

## The Sophomores

AS THE second year is about to be finished, which means that half of our college life is over, the sophomores continue to climb.

The first semester Raymond Broadie was president, Thomas Auner vice-president, and Kathryn Green secretary. Student council members were Alta Rogers and Carl Mettling. The second semester Carl Mettling was president, Robert Youle vice-president, and Elizabeth Little secretary. New student council members were Robert Youle and Gene Speirs.

We started the year's work by beating the freshmen in class day early last fall. This victory has been succeeded by many others during the year, as a brief review of our record will show.

We have made our contribution to the scholastic standing of our Alma Mater with a large number of honor students. We have been well represented in all organizations, pep, religious, literary, and musical.

We have outstanding representation in dramatics with the election of Marjorie Parsons and J. D. Krell to the Campus Players. One of our group, Virginia Moore, was elected 1937 Moundbuilder Queen and also president of her society the second semester.

It is in athletics that we are especially proud of our achievements. Woodward, Whitesell, and Daugherty played important positions on the football team and deserve due recognition. We think no one will deny our ability in basket ball and we are glad to say that the only two S. C. players to make the all-conference team were Harold Bratches and Lloyd Tucker, both sophomores. Most of the members of the winning intramural basket ball teams were sophomores.

This is only the score at the half, we hope to double it at the end of the game.

—EULA VAN NATTA







## Sophomores

MARTHA JANE DUCKWORTH Spivey

LORENE DURR Dighton

HOWARD ECKEL Leon

THELMA FLOWERS Cimarron

JACKSON FOOTE Liberal

GERALDINE GEE Kinsley

RUTH GILBERT Winfield

VICTOR GILLESPIE Arkansas City

EUGENE GRAHAM Winfield

KATHRYN GREEN Pratt

ORVILLE GREEN O'Neill, Neb.

BARBARA GROSSMAN Cullison

LUCILE GROVES Medicine Lodge

MARY ELLA GROVES St. John

NATHAN HAYES Greensburg

GRACE FEITMEYER Conway Springs

DORSEY HODGES Greensburg

WAYNE HOLCOMB Zenda

ERNESTINE HUBBARD Wilmore

ESTHER HUBBARD Wilmore

RUTH HUGGINS Udall

VIRGINIA HUTSELL Burns

LOIS JOHNSON Copeland

LEONARD JOHNSTON Dighton

WALTER JONES Lewis

NEVA JUNE Udall

ROBERT KAUFMAN Douglass

ELSIE KEIMIG Zenda

GLADYS KITTLESON Winfield

MERLE KNEPPER Winfield

WINIFRED KNOWLTON Oxford

JENNIE KRAUSE Kismet

OPAL KRAUSE Plains

WINIFRED KNOWLTON Oxford

JENNIE KRAUSE Kismet

OPAL KRAUSE Plains

WINIFRED KNOWLTON Oxford

JENNIE KRAUSE Kismet

OPAL KRAUSE Plains

**MOUNDBUILDER** ♦

Marlo Knepper

*Dear friends, you are such an inspiration in your studies. I wish you all the best in your future. I hope you will be successful in all your endeavors. I am proud of you all. Love, Marlo Knepper*

*Wishing you success in all your endeavors. Love, Marlo Knepper*

*Dear friends, I had enjoyed your company very much. I hope you will all be successful in your future. I am proud of you all. Love, Marlo Knepper*

## Sophomores

J. D. KRELL *Oxford*  
 JOE LAIRD *Ponca City, Okla.*  
 HARLAN LENANDER *Lindsborg*

MARIAN LIPPOLDT *Kinsley*  
 ELIZABETH LITTLE *Conway Springs*  
 JOHN LOWRY *Argonia*

J. A. McDONALD *Wellington*  
 RUTH MCINTOSH *Altoona*  
 MARTHA MCWILLIAMS *Dighton*

RUTH MEEKER *Winfield*  
 CARL METTLING *Lewis*  
 MILDRED METTLING *Lewis*

IONE MILLER *Boston, Mass.*  
 RODERICK MOORE *Sedgwick*  
 VIRGINIA MOORE *Sedgwick*

HARRY MORGAN *Winfield*  
 SYLVIA WISEHEART *Richfield*  
 WILLIS MUSICK *Canton*

CLARENCE NICHOLS *Protection*  
 EDITH NILES *Copeland*  
 DICK NORTON *Johnson*

ORLAN NORTON *Johnson*  
 THELMA NURSE *Medicine Lodge*  
 CAROL ORMES *Winfield*

MARJORIE PARSONS *Winfield*  
 PEARL PARTRIDGE *Macksville*  
 JAMES PHILLIPPI *Argonia*

HELEN PORTER *Viola*  
 MARY C. POUNDSTONE *Winfield*  
 ANSEL RESLER *Cedar Vale*

HAROLD RICKARD *Nardin, Okla.*  
 LUCILLE ROBBINS *Larned*  
 ALTA ROGERS *Haven*

◆ THIRTY-SEVEN



Dear Guy:-  
 I have certainly enjoyed  
 knowing you & the great joy  
 will tell you how I have enjoyed  
 it. I hope you will take you a lot  
 of love & happiness.

Remember your fellow  
 student, I wish you all  
 success & happiness.  
 Pearl



## Sophomores



LOLA MAE RUMSEY Winfield  
FLORENCE SCHMIDT Ford  
AL SCHWINT Byers



DONALD SHANNON Fellsburg  
RUBIE SHELTON Manter  
HERSHEL SHOCKEY Winfield



MELLA MAE SIMPSON Winfield  
INEZ SMITH Cyle, Okla.  
GENE SPEIRS Kinsley  
LEROY SPITZE Kinsley  
ARTHUR STAUFFER Leadville, Colo.  
MAY E. STORY Pawhuska, Okla.



HERCHEL SWANSON Byers  
MARGARET THOMAS Argonia  
LYNN TORRANCE Norwich



LLOYD TUCKER Winfield  
EULA VAN NATTA Ponca City, Okla.  
MARLIN WALLACE Bison



KYLE WILBER Winfield  
LYNN WILCOE Winfield  
LOUISE WENIGER Cleveland  
ROBERT WHESELL Clearwater  
EARL WILBER Winfield  
INEZ WILSON Annis



DONALD WISE Clearwater  
CHALMER WOODARD Wichita  
PHILO WOODDELL Winfield



WILFERD WORTMAN Harper  
ADA WRIGHT Grenola  
HELEN WRIGHT Adair, Okla.



LOIS MAY WRIGHT Zenda  
HAZEL WYCOFF Winfield  
DORIS YORK Ashland



MOUNDBUILDER ♦

For, send any about to write and the  
write professional teacher, by, opportunity in  
which I will have the first of my life, you wish  
all the success and happiness that you wish.

Dear Sir: I have been  
in your class and I enjoy  
it very much. I hope  
to be a teacher.

Dear Sir: I have any year  
knowing you and I hope  
to be a teacher.

Dear Sir: I have any year  
knowing you and I hope  
to be a teacher.

## Sophomores

ROBERT YOULE  
ROBERT YOUNG

Winfield  
Winfield

ETHEL BALES  
VIRGIL BAYNE

Winfield  
Winfield

CHARLES GREEN  
DOROTHY ALICE HAWK

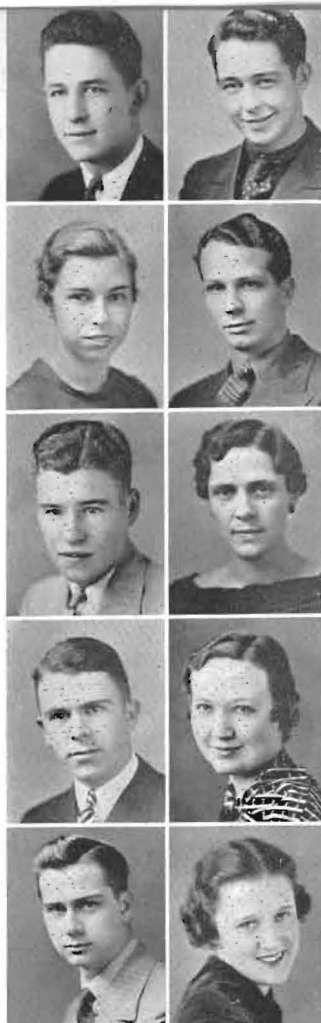
Winfield  
Eppingham

GEORGE LAWRENCE  
INA LOPER

Winfield  
Mulvane

THOMAS MORGAN  
BEATRICE PARKER

Winfield  
Canton



*"We shall  
always  
remember  
Child  
Psychology  
Dorothy  
Hawk."*

*Dearest Lai:*

*I just have to express my  
thanks, altho Lai I have just known you this  
semester, it seems that we have been old  
friends forever.*

*Sore  
Dorothy Hawk.*



◆ THIRTY-SEVEN

*head of  
in high school  
I could never  
all just wait you  
had let's. I'm glad  
we had the opportunity  
know you in college  
young. I'm to all times  
Mr. Principles degree.  
a good old good luck  
Thank you*



*Hello Sleepy Head,  
 Remember how  
 sleepy we got in methads.  
 I hope to see you and your  
 sunny smile next year.  
 a "Clock watcher" and  
 friend,  
 Opal.*

*Dear Lois,  
 Lots of love to you  
 and friend.  
 Mary E. Beaman*

## The Freshmen

Two hundred strong, we Freshmen thronged the halls of Richardson and North that memorable day, our first on Sunset Hill. And though we mustered all the worldliness at our command, crude inexperience stood out like a gravy spot on one's Sunday vest. But Time heals as many wounds as upperclassmen inflict polishing away the rough edges. Now they are history—the day the Sophomores dunked our lads like so many doughnuts in the Lagoon, the painstaking white-washing of the "S", the sting of the paddle, the humbling of every cocksure Freshman.

We emerged true Builders to carry on the duties of a new class at Southwestern. The first semester Marvin Tucker was elected president; Earl McFaddin, vice-president; and Dorothy Stevick, secretary-treasurer of the class. These offices were filled the succeeding semester by Ted Dieterich, Mary Ellen Brownlee, and Wendell Hays. During the course of the year members of our class have distinguished themselves by noteworthy achievements in athletics, music, debate, scholarship, dramatics, and social activities. They have made their contribution to campus life in all its varied phases. We as a class are striving to live up to the standards set before us by our predecessors, to entrust to those who follow us an even richer tradition of Southwestern, our Alma Mater.

—MARCIA HUBENETT.

*Dear Lois  
 You have been my  
 best friend in college. I  
 hope we can have many  
 more discussions in which  
 we can settle the world  
 affairs and discuss "Pet  
 Hates"*

*Love -  
 Viola*







*Dear Miss  
I miss you in  
this semester. enjoyed  
knowing you.  
To day*

**Freshmen**



HAZEL FALL *Langdon*  
GARNET FELLERS *Mullinville*  
PORTER FISHER *Council Grove*



ROBERT FLEENER *Liberal*  
HAZEL FLOWERS *Cimarron*  
ELAINE FOSTER *Pretty Prairie*



MAYELLA FRANKLIN *Winfield*  
MARY FULTON *Winfield*  
BARBARA GARDNER *Wellington*



RUFUS GATTON *Burden*  
GARY GEISSLER *Valley Stream, N. Y.*  
JEAN GLENN *Dodge City*



JACK GORSUCH *Leoti*  
ROBERT GREEN *Beaver, Okla.*  
MILDRED GRIER *Viola*



FLORENCE GRIEVE *Turon*  
HELEN GUNCKEL *Sapulpa, Okla.*  
ROBERT HAINES *Geuda Springs*



HAROLD HALLING *Hanston*  
DORA HANNAWALD *Pratt*  
JOHN HARRINGTON *Cambridge*



GRANT HAYES *Elkhart*  
WENDELL HAYS *Winfield*  
HAZEL HENDRICKS *Beaver, Okla.*



HERBERT HENDRICKS *Beaver, Okla.*  
LEE HERRON *Augusta*  
WREATHA HESSER *Copeland*



DORIS HIGHFILL *Winfield*  
CHARLES HINSHAW *Winfield*  
EARL HOLCOMB *Zenda*



BERNICE HOLLOWAY *Scott City*  
HELEN HOOVER *Winfield*  
HELEN HORTON *Stafford*  
  
KEITH HOWELL *Langdon*  
MARCIA HUBENETT *Preston*  
GLENN HULL *Liberal*

**MOUNDBUILDER** ♦

## Freshmen

MARY JACOBUS Hutchinson  
RUTH KELMAN Pretty Prairie  
LORENE KIDDOO Canby

CAROL KING Augusta  
KENNETH KINSLOW Arkansas City  
DAVID KOBLITZ Rolla

JESSIE LEE LAKIN Kingman  
WARREN LAMMY Wellington  
JEANNE LAWRENCE Winfield

FRANK LITTLE Richfield  
LETA LUKE Scott City  
LUTHER LYON Winfield

THELMA MARBURGER Lyons  
DALE MARINE Copeland  
BONNIE MARKLEY Winfield

RUDOLPH MARTIN Trosdale  
DOROTHY MASTERSON Wilmore  
MARY KATHRYN MAWDSLEY Pratt

EUGENE MAXWELL Rock  
EVAN MCCALL Canton  
VELMA MCCOLLUM Kismet

JOE MCCOY Hugoton  
PEARLE MCFARLAIN Stover  
EARL MCGINNESS Ault

MARGARET MCINTOSH Alton  
JOHN MCNUFF Hugoton  
MORRIS MCWHIRT Conway Springs

BETTY MILLER Maryane  
HEBER MILLER Knowles, Okla.  
JAMES MORRIS Winfield

RALPH MURPHY Pretty Prairie  
ALMEDA NATIONS Greensburg  
ADOLPH NEAL Ellis



Will remember you as one of the first whom I became acquainted with in Winfield. Expect to see you next fall. May success be yours.

Don't off you don't sleep in our history class, I put you'll be a success. Here's best to you. Carl McWhorter

◆ THIRTY-SEVEN

Remember, do go on like soon!! I think you and your ideas are swell. Glad I know you and don't forget Platoon, change the bus habits, you church, Baptist church, the pop, no more chicken, Well, I'll be back soon. I'll be back soon.

Will you always remember the good old days, when we had classes together in 1930? Best wishes to you and yours. Edith Pickers.

Thank you, I have been a pleasure to know you. I will remember you over my next year. Word to get physical. Class. I will and welcome to join a friend.



# Freshmen

EDNA NIER  
 GERALDINE NIER  
 MARTIN NOE  
 JEAN ONCLEY  
 RUTH ONCLEY  
 EVELYN OSWALT

LAWRENCE OTEY  
 WANDA OVERBEY  
 MAXINE PARKER

CECIL PORTER  
 ROBERT POST  
 TRESIA JANE POTTER

PAUL QUINN  
 LEON RATCLIFF  
 REX RECCIUS

ANDREA REESE  
 GWENDOLYN REIMER  
 MARY ELIZABETH REYNOLDS

ANNA VERA RHINE  
 EDITH RICKERS  
 LOUIS RIEBE

JEAN RITTER  
 FRANCES ROBINSON  
 DAVID ROHL

ROBERT SCHMIDT  
 DEAN SETTLES  
 CHARLES SHAFER

GLEN SHEPHERD  
 EVELYN SHOEMAKER  
 ROBERT SHRAUNER

KATHRYN SHUSTER  
 WARD SIMS  
 WILBERT SMISCHNY

SHALLINVILLE  
 Okeene, Okla.  
 Pratt  
 Winfield  
 Winfield  
 Plains  
 Winfield  
 Winfield  
 Winfield  
 Arkansas City  
 Belle Plaine  
 Hooker, Okla.  
 Winfield  
 Sterling  
 Winfield  
 Winfield  
 Plains  
 Augusta  
 Hugoton  
 Winfield  
 Greensburg  
 Sawyer  
 Healy  
 Nowata, Okla.  
 Copeland  
 Lyons  
 Copeland  
 Caldwell  
 Minneola  
 Winfield

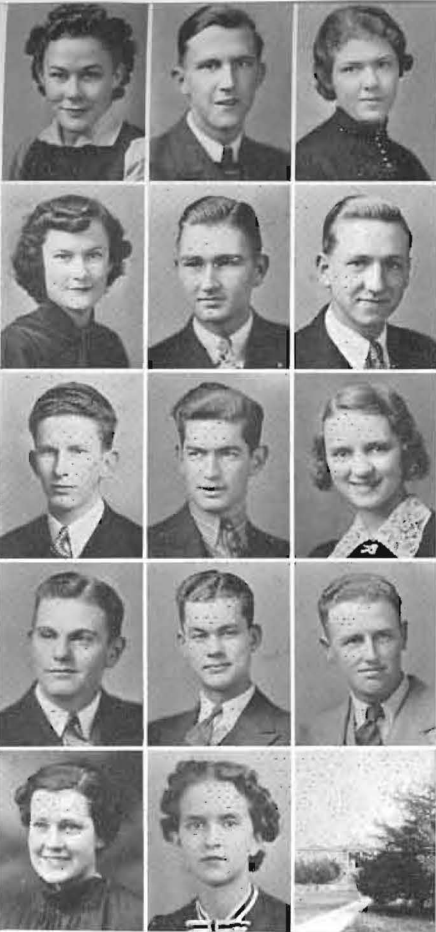
Dear Lois, I don't forget me. I will miss you.

MOUNDBUILDER ♦



Dear Sir: I have certainly enjoyed  
-I have known you for your splendid friendship,  
I wonder our Mrs. Laid and hope to see you at Dayton  
to you. Very faithfully  
Mrs. Laid

Page 49



## Freshmen

THELMA BURNELL      Yale, Okla.  
JAY CASEY      Valley Stream, N. Y.  
LORENE COBB      Wellington

CLARA DOUGHTY      Winfield  
EARL MCFADDIN      Winfield  
KARL MAGNUSSON      Rock

WILLARD MYER      Winfield  
DON OSTERHOUT      Winfield  
MARGARET R. PARKER      Winfield

LAVERE PENINGER      Burden  
MAX SHAY      Winfield  
DEAN STAATS      Copeland  
Junior, Physics and Mathematics.

MAXINE TITUS      Lyons  
BETTY VINSONHALER      Winfield

Remember the high school  
and college orchestras.  
Lots of luck to a good cello player.  
Willard Myer

Dear Lois,  
We've saved these  
old cellos for a long time  
haven't we and had a lot of  
fun doing it. It was a lot of  
fun to play with you  
again this year. You've  
been a sweet friend & I hope  
our friendship continues.

Sincerely,  
Len

Lois you have a plenty  
sweet disposition and  
are smart too.  
Mark Daggett



MOUNDBUILDER ♦





# The Moundbuilder 1923



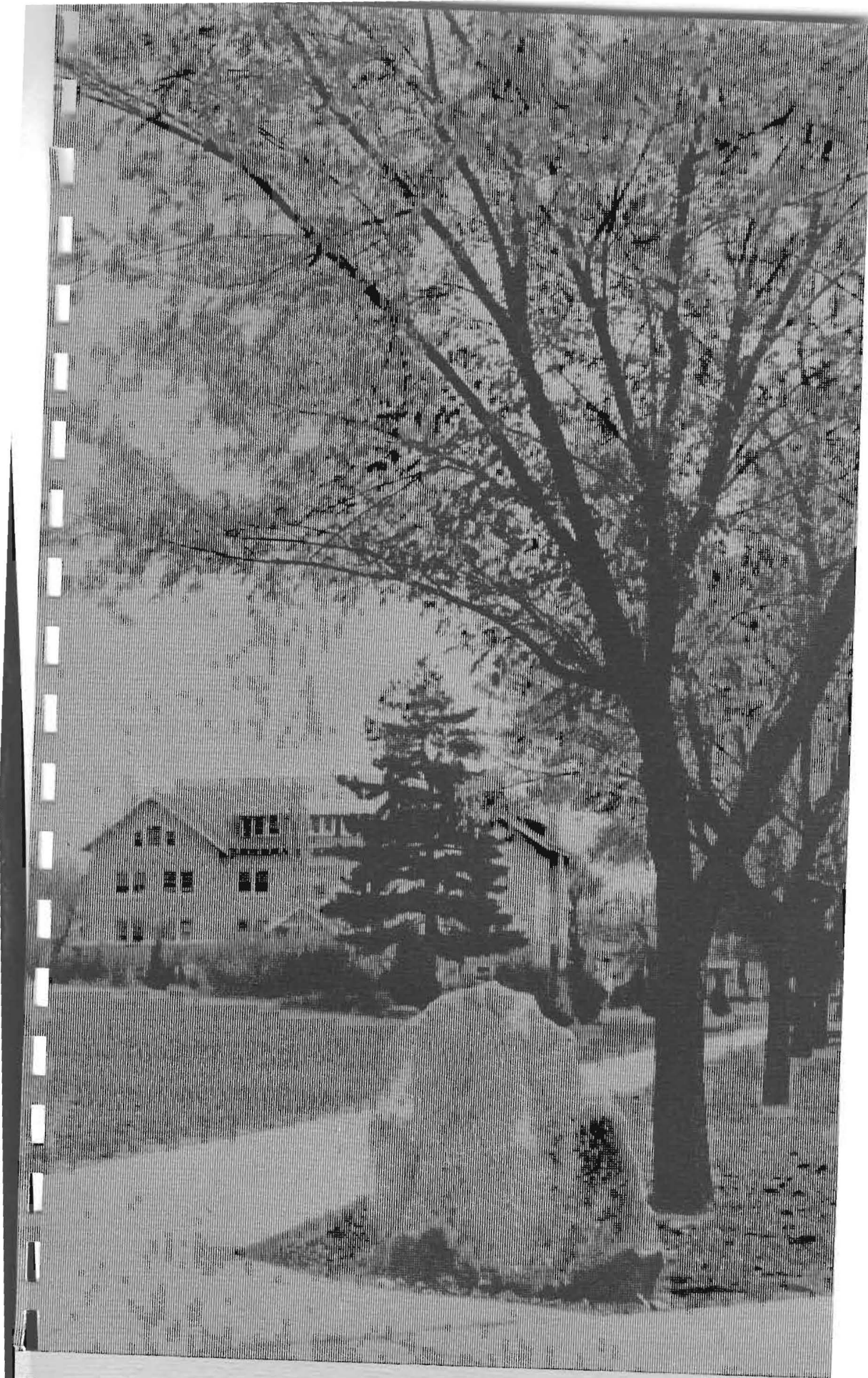
DEAR READER: This is the extra page we had to fill in!

◆ THIRTY-SEVEN



Campus trees have suffered in recent years because of the oil development. This familiar landmark (see page 5) has been cut down . . . the all-school carnival attracted a huge crowd and cleared \$125 for band uniforms . . . Major Savage . . . be-witching freshmen girls . . . homecoming crowd . . . homecoming Queen . . . Collegian business mgr. . . and noon exit.

## MOUNDBUILDER ♦



Smith Hall





## Southwestern's Society System



THE incoming freshman often asks the question, "Why are there no Greek letter fraternities and sororities on the campus of Southwestern?" Before answering that question it is necessary to delve into the history of the college itself to find the objections to such a system.

The first fraternity, the Sigma Nu, organized in 1889, was disbanded by the trustees of the college because they found it incompatible with the college system. No specific reason was given by them, except that they had investigated the situation and had decided against it. The members of the fraternity were given the privilege of renouncing the organization or leaving school. They left school, and as a result, the college had no graduating class in 1897.

From that time on there has been a constant demand on the part of the trustees that no fraternity or sorority be allowed to exist upon this campus. The students of that day, wishing to organize socially, were much in favor of literary and debate clubs. They were allowed to organize Literary Societies, which in a small way duplicated the social system of the Greek letter organizations on larger campuses.

There has been a long list of Literary Societies. Many changed their name from year to year by disbanding and reorganizing. But the four oldest organizations, the Belles Lettres, the Athenians, the Sigma Pi Phi and the Delphians have been active for over forty years.

There has been some question, of late, as to whether the societies are really literary or social in nature, and whether it is wise to continue with a limited membership chosen by the rush week activities.

Many think that a drastic change is necessary to put new life and power into the old societies. Others say that the societies are as strong as ever, and will continue to serve the students of Southwestern with a cultural, social and literary program of activities throughout the year.



### BROTHER-SISTER SOCIETIES

Aurora—Laconia  
Belles Lettres—Athens  
Sigma Pi Phi—Delphi

Dear Lois:

Oh, what Econ. students we turned out  
to be. I am glad that Annemary

helped us to get acquainted.

I wish you lots of success.

Barbara Gardner

**Sigma**



ANDERSON, LENA  
ARDERY, SADIE  
BASORE, MARIAN  
BASORE, EARLINE  
BATY, RUTH  
BEAN, JOYCE  
BEEMAN, MARY  
BEEMAN, VIOLA  
BLAIR, SARAH M.  
BLAND, GENEVA  
BRAY, RACHEL  
BROCK, OPAL  
BROADIE, MARGARET  
BROWN, WINIFRED  
BYER, HAZEL  
CAFFREY, BETTY  
CARSON, LOIS  
COBB, LORENE  
CRESWELL, RUTH  
CROW, MAXINE  
DIETERICH, DOROTHY  
DIXON, VEONA  
DOTY, MAXINE  
DOBBIN, LOIS  
DRESSLER, DOROTHY  
ELLIOTT, HARRIETT  
EMERSON, HARRIETT  
ESLINGER, ELIZABETH  
FALL, HAZEL  
FELLERS, GARNET  
FOSTER, ELAINE  
FULTON, MARY  
GARDNER, BARBARA  
GEE, GERALDINE  
GRIER, MILDRED  
GROSSMAN, BARBARA  
GROVES, MARY ELLA  
GROVES, LUCILLE  
GUNCKEL, HELEN  
HAYS, JUNE  
HEITMEYER, GRACE  
HENDRICKS, HAZEL  
HESSER, WREATHA  
HINK, VIOLA  
HORTON, HELEN  
HUBENETT, MARCIA  
HUTSELL, VIRGINIA  
JOHNSON, LOIS  
JOHNSON, MARIE

JONES, WINIFRED  
KELMAN, RUTH  
KIDDOO, LORENE  
KING, CAROL  
KNOWLTON, WINIFRED  
LANDON, CHARLOTTE  
LENT, FRANCES  
LIPPOLDT, MARIAN  
LIPPOLDT, LELA  
LUKE, LETA  
MARBURGER, THELMA  
MASTERTON, DOROTHY  
MCINTIRE, FLORENCE  
MCWILLIAMS, MARTHA  
MILLIKEN, CLEO  
MULVANEY, IRIS  
NEIER, EDNA  
NEVENS, ELIZABETH  
NICHOLS, VERALEE  
NURSE, FRED  
NURSE, THELMA  
OLDROYD, DOROTHY  
ONCLEY, JEAN  
ONCLEY, RUTH  
OSWALT, EVELYN  
PARKS, RUTH  
PARKER, MAXINE  
PARSONS, MARJORIE  
PORTER, HELEN  
POTTER, TRESIA JANE  
ROGERS, ALTA  
ROTH, JANE  
SELLE, GRACE  
SCHMIDT, ARLENE  
SHUSTER, KATHRYN  
SHELDON, RUBIE  
SIMPSON, LENA MARIE  
SPITZE, DOROTHY  
SPITZE, LEAH  
STEVENSON, JOSEPHINE  
STEVICK, DOROTHY  
STOLLEI, MILDRED  
STOUT, ESTELLE  
TITUS, MAXINE  
THOMAS, MARGARET  
TRUMBULL, MATTIE GRACE  
WHITE, KATHERINE  
YARBERRY, JERRY  
YOUNG, GLEE





Left to right: PORTER, DRESSLER, GARDNER, BROADIE, LUKE, STEVENSON, COBB, GRIER, H. ELLIOTT, A. ROGERS

YOUNG, L. LIPPOLDT, BEAN, SELLE, KNOWLTON, TRUMBULL, M. BASORE, KIDDOD, HUBENETT,  
M. LIPPOLDT, MASTERSON  
DOTY, T. NURSE, M. JOHNSON, BROWN, L. SIMPSON, HEITMEYER, HAYS, HUTSELL

NEIER, JONES, CAFFREY, MCINTIRE, BRAY, D. SPITZE, FELLERS, J. ONCLEY, LAWSON  
MCWILLIAMS, PARSONS, HENDRICKS, FALL, OSWALT, ANDERSON, YARBERRY, PECK, ARDERY

L. JOHNSON, R. ONCLEY, POTTER, CROW, GEE, F. NURSE, L. SPITZE, DOBBIN, DIETERICH  
LENT, M. THOMAS, SHUSTER, STOLLEJ, M. PARKER, STEVICK, SHELDON, BYERS

FULTON, OLDROYD, WHITE, MULVANEY, KELMAN, EMERSON  
E. BASORE, NEVENS, FOSTER, BLAIR, I. GROVES, M. GROVES, HORTON

# ◆ THIRTY-SEVEN

Dear "Maureen"  
Hi! Homecoming!  
How about another  
10 min. like? We had  
lots of fun, didn't  
we? Remember  
"Vinny," last yr?  
We enjoyed your  
church several  
times. I hope we may  
see each other for  
many more such  
good times as we  
had. A friend, "Aileen"



*Hell-week for the freshmen, but fun for upper-classmen. Sigma Delphi paddles warm their victims as they crawl down 77 steps (see paddle in picture, upper left). Sandwiches from paper sacks are devoured by hungry pledges and washed down with hot coffee. King and Queen of Hearts at the Valentine party. Banquet and floor show at the Bretton Hotel.*

**MOUNDBUILDER** ♦

*It was a great popularity but I don't know, as to the  
 way, no matter, please say the H. I think I would  
 like, please, to have a small di. I have been here  
 since the H.*

# Sigma-Delphi Honor

FLORENCE MCINTIRE  
Rush Captain

ROBERT THOMPSON  
Pres. First Sem.

MATTIE G. TRUMBULL  
Chairman Executive  
Committee

LOWELL MILLER  
Pres. Senior Class

WENDELL LAKE  
Pres. Second Sem.

WINIFRED JONES  
Who's Who

WESLEY HODGES  
Dramatics

DOROTHY OLDROYD  
Who's Who

GLEE YOUNG  
Pres. First Semester

BERT KELLER  
Campus Player

DOROTHY DIETERICH  
Pres. Junior Class

MERWIN DEEVER  
Male Quartet



# Delphi



AMES, ROBERT  
ANTRIM, PHIL  
BIRCHENOUGH, DONALD  
BOLES, ROBERT  
BOLES, PAUL  
BRANINE, PAUL  
BROADIE, RAYMOND  
CARRIER, JOE  
CASEY, JAY  
COE, DON  
COOPER, WYATT  
COUCH, DEAN  
COUNTRYMAN, FRANK  
COUNTRYMAN, GLENN  
COWAN, LEONARD  
DAUGHERTY, JACK  
DAVIS, FRANCIS  
DEEVER, MERWIN  
DIETERICH, TED  
DORSEY, GABE  
DUNGAN, EARL  
EDGELL, VICTOR  
ELLIOT, ROLAND  
FOULK, CLIFFORD  
FRIEND, ROBERT  
GEISSLER, GARY  
GREEN, ROBERT  
HARP, LLOYD  
HAYES, GRANT  
HAYS, WENDELL  
HENDRICKS, HERBERT  
HERRON, LEE  
HODGES, DORSEY  
HODGES, WESLEY  
HOLECEK, HARLEY  
HOLECEK, WAYNE

HOLMES, M. D.  
HULL, GLENN  
JOHNSON, STEVE  
JOHNSTON, LEONARD  
JONES, MELBOURNE  
KELLER, BERT  
LAKE, WENDELL  
LENANDER, HARLAN  
MARTIN, RUDOLPH  
MATTHEWS, LOREN  
METTLING, CARL  
MILLER, LOWELL  
MURPHY, RALPH  
PHILLIPPI, JAMES  
POLITZER, FRANK  
RAMSDALE, BILL  
RICKARD, HAROLD  
RIEBE, LOUIS  
SCHWINT, AL  
SHAFFER, CHARLES  
SHRAUNER, ROBERT  
SIMS, WARD  
SPEIRS, GENE  
SPITZE, LE ROY  
STOCKING, MILTON  
STUDE, LAWERENCE  
SWANSON, HERSCHEL  
THOMPSON, ROBERT  
WADE, WENDELL  
WHITESELL, ROBERT  
WISE, DONALD  
WOODARD, CHALMER  
WOODSON, BILL  
WORTMAN, WILFRED  
YORK, RUSSELL  
YUST, WALLACE





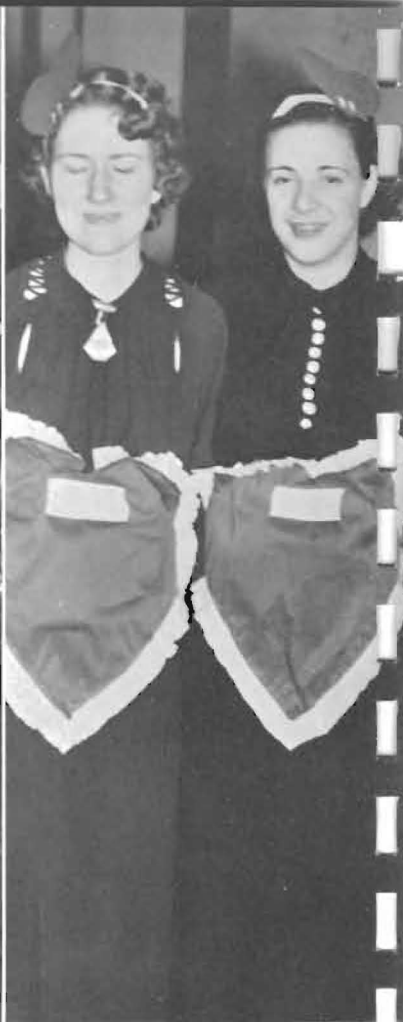
Left to right: SHAFER, RIEBE, MILLER, WADE, SCHWINT  
STUDE, HERRON, RAMSDALE, COE, DUNGAN, B. BOLES

SHRAUNER, YUST, LENANDER, SPITZE, WORTMAN, DAVIS, METTLING, G. COUNTRYMAN  
WISE, ANTRIM, BROADIE, THOMPSON, GEISSLER, HAYS, WOODARD, RICKARD

COUCH, CASEY, EDGELL, H. HOLECEK, KELLER, HARP, DIETERICH, BIRCHENOUGH, FRIEND  
W. HOLECEK, PHILLIPPI, WHITESSELL, LAKE, JOHNSON, POLITZER, F. COUNTRYMAN, HULL

SPEIRS, DEEVER, DAUGHERTY, P. BOLES, CARRIER, COWAN

*Hi Louie - How about  
a job keeping  
Casey from Nicklin?  
You & I sure  
have been fun  
working  
in the Bake Shop  
and knowing you  
in college this year.  
Really I would like  
to direct the trio some  
time - It sounded  
pretty well that  
Sun. at Eng. Club, how-  
ever, without me -  
Be good & play better  
next year & always  
Your friend  
Leonard*



*Sigma-Delphi valentine party in Student Union. Presidents Young, Thompson, and Lake (upper left) seem to enjoy refreshments. Charming waitresses too. Lenander's proposal was refused, according to the witnesses. Vic Edgell (lower right) seems to be having a tough time guessing that music game. A crowded corner (lower left) indicates a mad scramble for candy hearts.*

**MOUNDBUILDER** ♦



# Belles Lettres



AYRES, MILDRED	HODGE, ERNESTINE	ROBBINS, LUCILLE
ALLEN, VIRGINIA	HOLLOWAY, BERNICE	ROBINSON, FRANCES
BADEN, ADELAIDE	HOOVER, HELEN	SCHMIDT, FLORENCE
BAUMAN, MARGARET	HUGGINS, RUTH	SIMPSON, MELLA MAE
BENSON, VIRGINIA	JACOBUS, MARY	THOMPSON, MARJORIE
BROWNLEE, MARY ANN	LAKIN, JESSIE LEE	TULL, LALA
BROWNLEE, MARY ELLEN	LAWRENCE, JEANNE	TWYMAN, REBA
CAMPBELL, BONITA	LITTLE, ELIZABETH	VAN NATTA, BELLE
CLARK, ROBERTA	MCINTOSH, MARGARET	VINSONHALER, BETTY
CRAFT, JANE	MARKLEY, BONNIE	WARNER, MARY T.
DAUNER, LOIS	MILLER, BETTY	WEAVER, JUANITA
ENGLISH, DOROTHY	MOLZ, MARGUERITE	WELCH, MARTHA
GLENN, JEAN	PARKER, MARGARET	WILKINS, VIRGINIA
GREEN, KATHRYN	PATON, LOVINA	WILMER, JOSEPHINE
HANNAWALD, DORA	PONATH, PAULINE	WILSON, MARY
HENDERSON, AILEEN G.	POUNDSTONE, MARY K.	WRIGHT, HELEN
HIGHFILL, DORIS	REYNOLDS, MARY	WRIGHT, LOIS MAE

*Below:* ALLEN, TWYMAN, SCHMIDT, DALKE, POUNDSTONE, HODGE  
WARNER, ROBBINS, GILMORE, GLENN, VAN NATTA, KEIMIG

ENGLISH, LITTLE, TULL, HOOVER, CLARK, LAKIN, AUSTIN, WRIGHT  
HUGGINS, MOLZ, WEAVER, STORY, BROWNLEE, GREEN, WILMER, HOLLOWAY





MILLER, MCINTOSH, THOMPSON, M. MCINTOSH, WELCH, WILKENS, REYNOLDS, WILSON,  
CRAFT, AYERS  
BROWNLEE, VAN NATT, BADEN, HIGHFILL, ROBINSON, JACOBUS, VINSONHALER, WRIGHT,  
SIMPSON  
LAWRENCE, BENSON, DOUGHTY, RUMSEY, PARKER, DAUNER, CAMPBELL

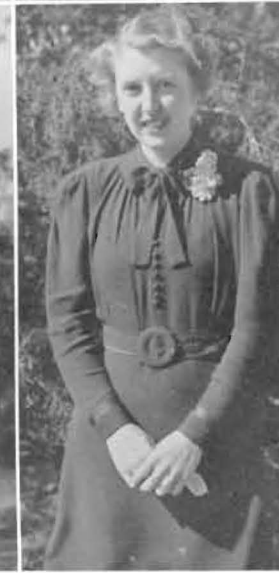
## Belles Lettres

*Belles Lettres' welcome to old members in Little Theatre Studio. Tea and sandwiches and beautiful Belles—to say nothing of handsome Athenians.*





Dear Girls  
 we are known each  
 other quite a while  
 so there is no need  
 telling you again  
 how much I appreciate  
 your friendship  
 and your more  
 interesting letters in  
 the future  
 Bob



JOSEPHINE WILMER  
*President of K. K.*

ROBERT YOULE  
*Debate*

JANE CRAFT  
*Dramatics*

WAYNE HOLCOMB  
*Rush Captain*

BILL PORTER  
*Student President*

ESTHER STUBER  
*May Queen*

VICTOR SPONENBERG  
*Pres. Second Semester*

MAXINE GILMORE  
*Extemporans' Speaking*

MILDRED AVERS  
*Pres. Second Semester*

STANLEY GRAHAM  
*Program Chairman*

MARJORIE THOMPSON  
*Editor Collegian*

E. VAN VALKENBERG  
*Pres. First Semester*

# **Belles-Athenian Honor**

# Athens

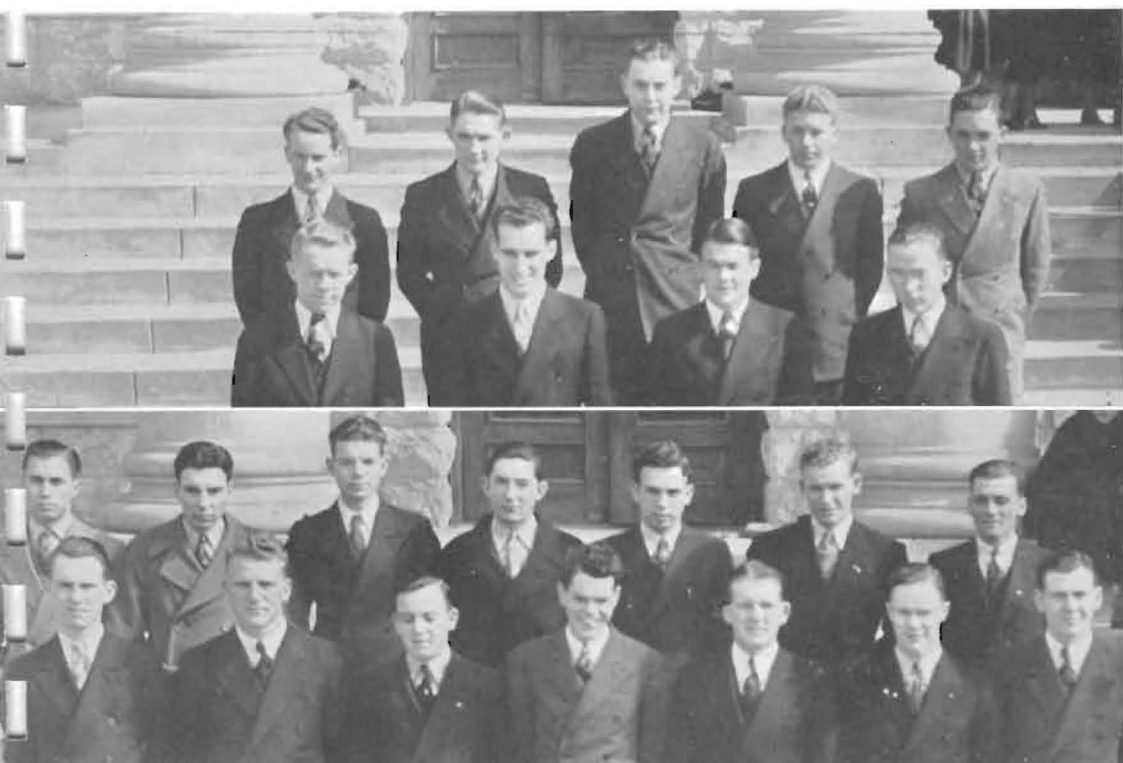


ALLEN, WARREN  
BALTZELL, BOB  
BARNES, ALFRED  
BRATCHES, HAROLD  
BROWN, BILL  
CLIFT, BILL  
ECKEL, HOWARD  
ELIJOTT, CHARLES  
FLEENER, BOB  
FRANKS, KEITH  
GATTON, RUFUS  
GILLESPIE, VICTOR  
GORSUCH, JACK  
GRAHAM, EUGENE  
GRAHAM, STANLEY

GREENE, FAY  
HADLEY, CHARLES  
HARRINGTON, JOHN  
HENDERSON, RAYMOND  
HOLCOMB, EARL  
HOLCOMB, WAYNE  
KNEPPER, MERLE  
KRELL, J. D.  
LYON, LUTHER  
MCCALL, EVAN  
MCFADDEN, EARL  
MAXWELL, LLOYD  
MORRIS, JIM  
OSTERHOUT, DON

OTTEY, LAWRENCE  
PORTER, BILL  
RESLER, ANSEL  
ROHL, DAVID  
SETTLES, DEAN  
SCHMIDT, BOB  
SHANNON, DON  
SMITH, RALPH  
SPONENBERG, VICTOR  
TUCKER, MARVIN  
VAN VALKENBURG, ELMO  
WEBBER, JIM  
WRIGHT, BILL  
YOUNG, BOB





*From left to right:* E. HOLCOMB, ELLIOTT, SMITH, GATTON, WEBBER, E. GRAHAM, PORTER, ROHL, SHANNON

HARRINGTON, ECKEL, OTEY, MORRIS, FRANKS, GILLESPIE, BARNES, LYON, KRELL, FLEENER, SPONENBERG, S. GRAHAM, RESLER, WARNER



TO THE left on page 66, J. D. Krell, make-up artist, gives the finishing touch to Frances Robinson for her part in the Little Theatre play which took second place this year.

Jane Craft, assistant director, does the same for Elmo Van Valkenburg who played the lead in "God Winks". At the lower right is Ansel Resler enacting a scene from the play for the benefit of the photographer. Margaret McIntosh plays opposite. J. D. Krell was director.

*Bottom left:* Members, WAYNE HOLCOMB, T. D. MORGAN, JACK SAVAGE, MARVIN TUCKER, ELMO VAN VALKENBURG, and JOHN VOIGHT



# Aurora-Laconia

## Society Honors—

*Below at top, MILDRED PIKE, Regent, first semester; WILLIAM HOLLIBAUGH, dictator, first semester; VIRGINIA MOORE, Moundbuilder Queen; VERNON CLARK, Archon of Pi Sigma Phi; EARLINE COOPER, Regent, second semester; WALLACE HILFINGER, Dictator, second semester*

*The four pictures at center show the rush week activities of the society. A banquet at the Brettun Hotel with WILLIAM HOLLIBAUGH as toastmaster. The "Collegians" give a musical show for Open Program, in upper left center.*

*From left to right below are members: VERNON CLARK, PAUL WILSON, GLEN SHEPHERD, DALE POMEROV, GENE MANNY, RICHARD GUNCKEL, MEREDITH MAYSE, RODERICK MOORE, DALE MARINE, ALMEDA NATIONS, MARLYS KING, DOROTHY McCLAREN, VIRGINIA MOORE, EARLINE COOPER, and WILLIAM HOLLIBAUGH.*





## Pi Sigma Phi

**P**I SIGMA PHI is the Campus organization of lettermen. Membership is limited to those men who have earned letters in some major sport, football basket ball, tennis or track. To receive letters men must participate in a specified number of games, usually a majority of the halves.

It is a fraternity to promote among athletes high standards of citizenship, scholarship and sportsmanship. An award is given annually to the athlete with the highest scholastic standing. Each year the fraternity selects from among its members one who best exemplifies the ideals of the fraternity.

An important event each year is the initiation of the new pledges. This initiation is very rigid, having the distinction of being the most difficult on the campus. The pledges are tested as to their many attributes of courage, valor and ability to encounter danger.

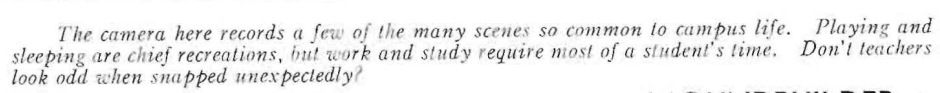
Another highlight of the year is the annual spring banquet for members, pledges and the lucky ladies. This is probably the most elaborate banquet of the season. Favors, which are held in high esteem by the invited ladies, are exceptionally splendid.

Officers are elected at the annual spring election, their tenure of office being one year. Present officers are: Archon, Vernon Clark; Vice-Archon, Ray Henry; Sec.-Treas., Percy Traugott. The sponsors are Monypeny, Cooper, Poundstone and Brown.

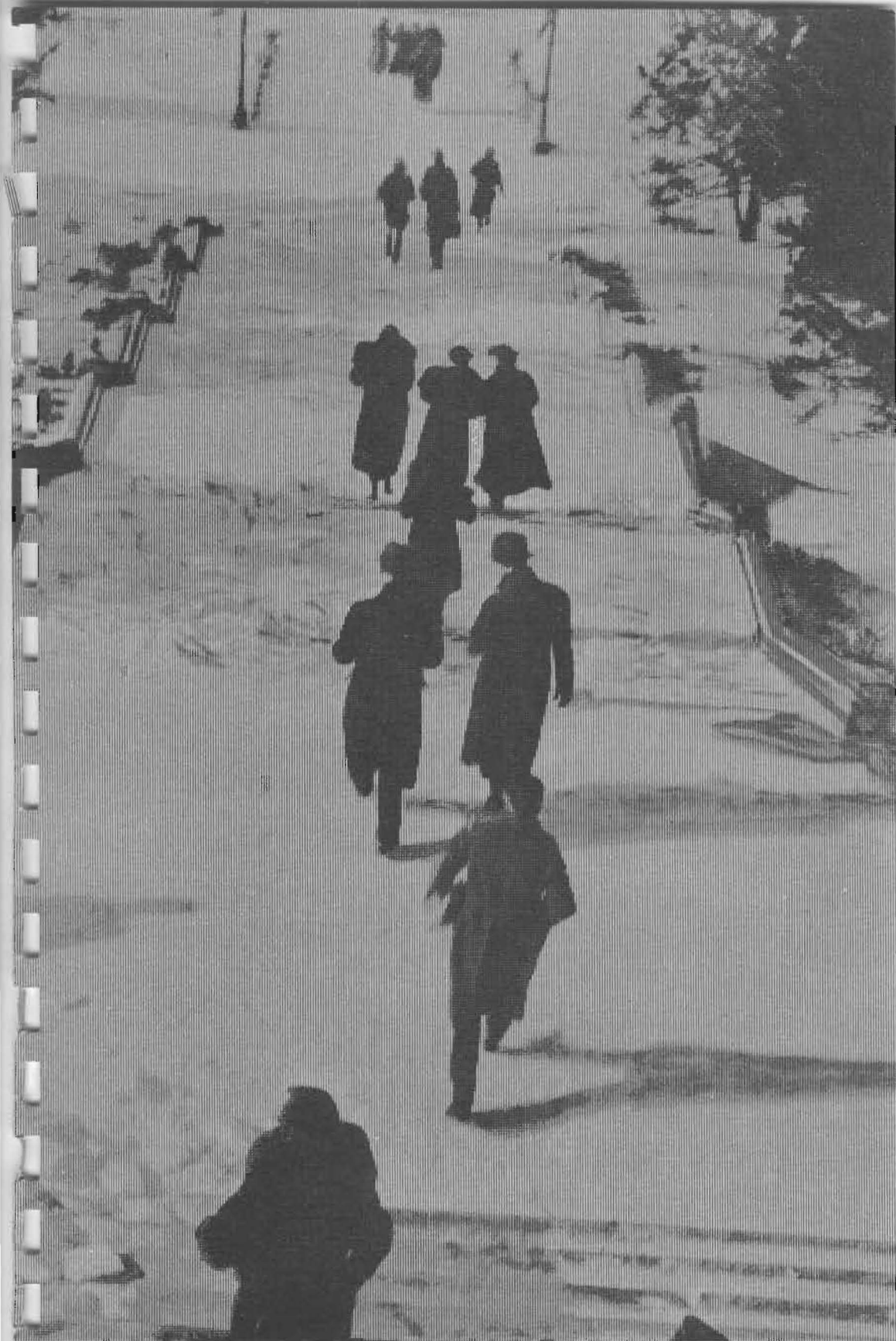


*Above left to right:* MONYPENY, BALTZELL, MARTIN, DALBOM, KRELL, DORSEY, BRATCHES, FORRESTER. *2nd.* WEBB, ROHL, WHITESELL, MUSICK, MCCOY, M. TUCKER, GILLESPIE, MAYSE, DENNY. *3rd.* HINSHAW, WOODARD, DAUGHERTY, CLARK, TRAUGOTT, L. TUCKER, PORTER, PHILLIPPI, JONES

*Insert:* Executives, CLARK, ARCHON; HENRY, BROWN, POUNDSTONE. C. I. C. president; Coach MONYPENY, TRAUGOTT



## Page 70



77 Activities





*Left to right: BILL PORTER, DOROTHY OLDROYD, CHARLES CURTISS, WINIFRED JONES and LOWELL MILLER were selected by the Administration Committee of the college to represent the highest 1% of the student body in leadership and ability in the national publication of the University of Alabama's Who's Who Among University and College Students of America.*

## Who's Who Among University and College Students of America

BILL PORTER, handsome Apollo of the Campus, idol of the basket ball courts, accountant, student government expert and president of the Student Body.

DOROTHY OLDROYD, charming and attractive, high-grade student and high-grade American girl, Home Economics expert par excellence, future leader of America in the Fine-Liberal-Practical Art of Home-Making.

CHARLES CURTISS, the learned, the inscrutable, the versatile, scholar, poet, mystic, scientist, thinker, writer, editor, whatnot.

WINIFRED JONES, "Beautiful Lady," possessor of the secrets of eternal charm and lovely manners, literary society and student government leader, editor, ardent sponsor of all good causes.

LOWELL MILLER, Six-and-a-half-foot Star Student, DeLuxe Photographer, Super-Editor, Singer, Actor, Artist, Jack-of-all Trades and Master-of-Many.

—DEAN ALLEN

## Student Council

**M**OST important of all campus organizations is the Student Council, a representative group, the members of which are chosen in class elections. Its purpose is to initiate constructive student enterprise, to assist in maintaining a harmonious relationship between the student body and the administration, and to act with the administration in the regulation of various organizations and activities.

Such duties as the direction of student assemblies, all-school parties, pep rallies, student elections, and the giving of awards for scholastic achievement, belong to the Student Council.

This year, the group, under the efficient leadership of William Porter, student president, has enacted some very constructive legislation, and has been responsible for the inauguration of much-needed reform in the administration of funds allocated to the various activities.

### *First Semester*

BILL PORTER  
BOB THOMPSON  
WINIFRED JONES  
LLOYD HARP  
ELSIE BATY  
DOROTHY DIETERICH

*President*  
*Vice-president*  
*Secretary*  
*Chm. Finance Comm.*  
*Chm. Assembly Comm.*  
*Chm. Social Comm.*

### *Second Semester*

BILL PORTER  
BOB THOMPSON  
WINIFRED JONES  
LLOYD HARP  
ELSIE BATY  
VIRGINIA MOORE

*Below, left to right:* DAVIS, COUNTRYMAN, METTLING, HAYS, SMITH, MILLER, STUDE, HARP, COE, DIETERICH, TRUMBULL, SHUSTER, JONES, MCINTIRE, PORTER, THOMPSON, KELLER, CLIFT, ROHL, YOUNG, LAWRENCE, MOORE, BROADIE, ANTRIM, CURTISS





## Personnel Council

THE Personnel Council, first organized in 1933, consists of the Dean of Men, Dean of Women, director of women's athletics, head of the department of language and literature, and President of the college, assisted by twenty-four upper-class students. These students, selected because of their interest, good character, and personalities, help the Deans of Men and Women keep in close touch with freshmen by directing council groups of ten freshmen each to become orientated to the campus.

It is the counselor's duty to cultivate the friendship of each freshman in his group, introduce him to fellow students, direct him about the campus during the first week of school, encourage him to attend church and Sunday school, help him with his personal problems, and acquaint him with all college activities.

All records and communications are of a secret nature and are subject to the inspection of the counselors only. Any problems which arise are handled directly through the council and are not allowed to be talked about among students as idle gossip.

From a statement in the Southwestern Collegian for March 10:

Four years ago Mr. Reese assumed the duties of dean of men and has since developed a personnel department which is unique in personality development and guidance. The personnel work of this department has attracted the attention of a number of administrative officers of colleges of Kansas and other states, some of which have visited the Southwestern campus to learn more of the details of the work.



Top: NEVENS, WILMER, MOORE, AYRES, COOPER, ENGLISH, OLDROYD, DIETERICH, CLOUD, LIPPOLDT

Lower: HOLMES, LAKE, JONES, MILLER, PETER, COWAN  
FRIEND, BRANINE, REESE, RESLER, PORTER

# The Moundbuilder

*Radical change made in size and content of the Student Body Publication*



**D**IRECTED by Lowell Miller, the Moundbuilder took on new size and shape for 1937. A flash camera was used for months to provide the necessary pictures found in it. The whole plan was revolutionary, clear down to the celluloid cover. M. D. Holmes, the business manager, placed a copy in the hands of every student on the campus, a new high in yearbook production! It's different—how do you like it?

1. Here are Moundbuilder builders at work. A laboring crew of journalistic minded students who didn't know any better than to apply for staff duty.

2. M. D. keeps the books balanced, and wires Wilbur Clark in Kansas City for more rubber cement to mount the pictures.

3. Editorial writers and a photographer pose for a picture in the cluttered office. Their duty is to write copy which tells you why Southwestern is what it is!

4. Assistant Business Managers Keith Franks and Leonard Johnston. Keith will be business manager of the yearbook next year, and Leonard will manage the Collegian.

5. Dunbar was almost cut out of this picture (see his nose left), but he did his share of the work. It's lots of fun! (Sure, look who is sitting on the editor's desk).

6. Schwint got a screwy picture of the editor actually at work. He is working on the panel which appears on page 101 of this book. Check for yourself.

Staff members: Winifred Jones, Mattie Grace Trumbull, Eula Van Natta, Marcia Hubenett, Marjorie Thompson, Lena Anderson, Dean Settles, Vic Spollenberg, Dunbar McLaurin, Bob Boles, Al Schwint, Keith Franks, and Leonard Johnston.

LOWELL MILLER . . .	<i>Editor</i>
M. D. HOLMES . . .	<i>Bus. Mgr.</i>
MARY WOOD . . .	<i>Advisor</i>

**MOUNDBUILDER ♦**

# The Collegian

*Full-fledged weekly newspaper of the  
Student Body appears every Wednesday*

UNDER the direction of Miss Marjorie Thompson, editor, a permanent record of the school year's work is reviewed in the pages of this publication. Established 42 years ago, the paper is the official student publication of the student body. Eula Van Natta is business manager and Charles Herring is faculty advisor.

1. It's a week-end job to write copy and set up the type for the four-page issue. Thompson (right) doesn't rest until the presses start grinding out six hundred copies.

2. The editorial staff, hard at work, (a good pose anyway), getting out the features and departmental subjects under their management.

3. Assistant J. D. Krell and business manager Eula Van Natta look over the layout of ads with the "job man" at the Courier Press.

4. Editor Thompson hands over the last sheet of copy to the linotype operator Tuesday noon.

5. Van Natta and assistants map out plans for collecting ads and balancing the books.

6. Every ad has to be checked and recorded, and payment collected under contract agreements signed at the first of the year.

*Staff members:* J. D. Krell, Earl Dungan, Lena Anderson, Victor Sponenberg, Bob Youle, Bill Porter, Wanda Overbey, Leonard Cowan, Eleanor Lee Shook, Charlie Curtiss, Peggy Wright, Dunbar McLaurin, Katherine White, Marjorie Parsons, Pauline Ponath.

MARJORIE THOMPSON	Editor
EULA VAN NATTA	Bus. Mgr.
CHARLES HERRING	Advisor





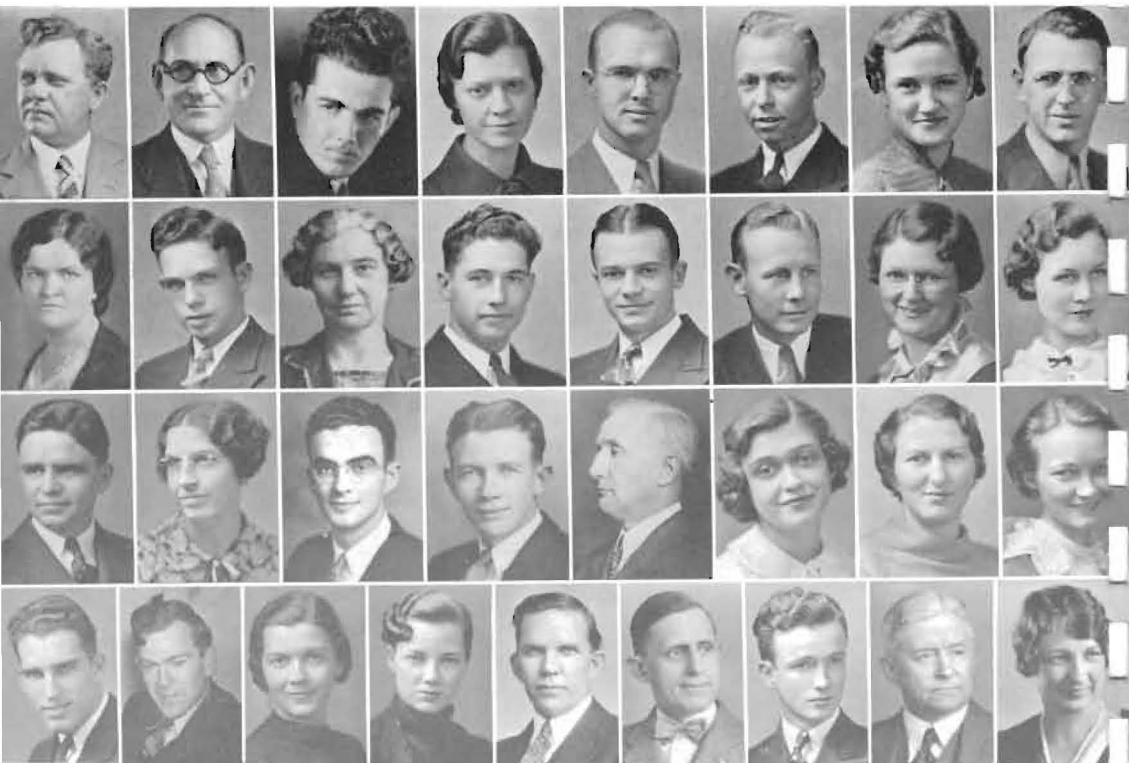
LEROY ALLEN

## Pi Gamma Mu

**P**I GAMMA MU, National Social Science Honor Society, was founded in 1924 by Dr. Leroy Allen, Dean of Southwestern College. The Southwestern College chapter, known as Kansas Alpha was the first chapter organized. Since that time the organization has grown until it now has one hundred and twenty active chapters in universities of the United States and its territories.

Membership in Pi Gamma Mu is limited to juniors, seniors, graduate students, alumni, and instructors, men and women who have attained a high degree of scholarship and have distinguished themselves in the study of social science. Requirements for student membership in the local chapter are twenty hours of social science with average grade of "B".

Dean Allen is now national executive secretary, and editor of the quarterly magazine, "Social Science". Dr. Charles A. Elwood of Duke University is National president. Mildred Pike is president of the local organization.



*Above 1st row:* DR. ALLEN, DR. BAKER, BOLES, CLOUD, CURTIS, DEEVER, DIETRICH, EDGELL

*2nd row:* EVERS, FRANKS, HERR, HOLECEK, W. HOLECEK, HOLMES, JEFFERIES, JONES

*3rd row:* MARCOUN, McNICHOLAS, MILLER, MODSCHIEDLER, DR. MOSSMAN, NEVENS, NURSE, OLDROYD

*4th row:* W. PORTER, DR. K. PORTER, PLUM, PIKE, POUNDSTONE, REESE, RITTER, VINSON-HALER, WHITE

**MOUNDBUILDER** ♦

## English Club

THE English Club exists for the benefit of those students who are definitely interested in the various fields of literature and composition. The programs for the monthly meetings are planned with chief emphasis on cultural and educational values.

This year, for the first time, the Club was divided into four discussion groups, which dealt with the fields of poetry, the novel, the drama, and creative writing, respectively. Each group was directed by a chairman, and met for study and discussion at the convenience of the members, these meetings being held in addition to the monthly general meetings.

Dr. T. Reese Marsh, head of the department of language and literature, is the sponsor of the English Club, and his work has been a very important factor in the service which the organization has rendered during recent years.

*Dear Lais -  
I think I first  
learned to know you  
through our mutual  
friend, Annette. I  
have admired your  
intellect and musical  
ability very much. Of my  
ever got through. I feel  
much again for me. See you next year - Love, Lais*



From left to right: SIMPSON, HUBENETT, POUNDSTONE, B. SMITH, THOMPSON, TULL, SHUSTER, SHELDON, R. ONCLEY, T. NURSE  
J. ONCLEY, BEAN, WEAVER, SELLE, HAYS, FRIEND, DIETERICH, MILLER, JOHNSON  
STOLLEI, MARSH, VINSONHALER, LITTLE, DAVIS, THOMAS, PATON

WISE, KELLER, BADEN, L. LIPPOLDT, JONES, VAN NATTA, PECK, MAWDSLEY  
HERRING, V. ALLEN, DRESSLER, KEIMIG, ANDERSON, GROSSMAN, M. LIPPOLDT, FRANKS  
EDGELL, WRIGHT, NEVENS, L. GROVES, PARSONS, DURR, CURTISS, RESLER



*Above:* The Choir of Grace Methodist Church under the direction of Luther O. Leavengood.

## Grace Church Choir

**G**RACE CHURCH CHOIR is made up entirely of college students who have been especially trained for the better choral work. Members of the college A Cappella Choir are required to sing in a church choir in addition to their regular practice, and most of them are found in the choir pictured above. Their work is of a superior quality, far above the ability of most church choirs, and the qualified members are active singers throughout their college career.

Under the direction of Luther O. Leavengood, former member of the Kansas City Philharmonic Orchestra, and dean of the College of Music at Southwestern, the choir has reached new levels of perfection. The organist for the choir is Miss Grace Sellers, outstanding young pianist and organist of the college faculty.

Special concerts are given for Christmas, Easter and at various times during the year.

Numbers by the string choir, women's trio, men's quartette and speaking choir have been used in connection with special services.



*Director,* LUTHER O. LEAVENGOD



*Organist,* GRACE SELLERS

**MOUNDBUILDER** ♦



Dear Lois - I certainly have enjoyed the music that your trio "put forth".  
 It was rather fun having you run in and out of the house occasionally.  
 Only you never came often enough or stay long enough - Well - I  
 Anyway - Here's to a "bigger and better" Southwestern.  
 Barbara Grossman



KRAUSE, NURSE, GROSSMAN, PETER, MCINTOSH, SHELTON, PARSONS, DUNGAN, RICKARD  
 Members of the Second Semester Epworth League Cabinet

## College Epworth League

THE Epworth League of Grace Church provides a Sunday evening worship hour for the young people of College Hill. Throughout the year, under the leadership of Robert Davidson and Darrell Peter as presidents, the League has taken a definite interest in the building of a better religious life for the students of Southwestern.

The outstanding feature of the whole year's program was the Quest Week services conducted by Rev. A. E. Henry of College Hill Methodist Church, Wichita, just before the Easter vacation season. These services gave the young people, and the older people as well, a reviving religious influence in their personal lives.

The Rev. Alvin W. Murray, with the assistance of Lloyd Harp, has always promoted the religious services at Grace Church in a manner which makes one feel that he is "at home with God." The attendance at church services and the Sunday School services has not declined during the year.



REV. ALVIN W. MURRAY



LLOYD HARP

## A Cappella Choir

ONE of the most popular musical organizations, nationally recognized in many musical centers, is the A Cappella Choir of Southwestern College. During eleven years the choir has traveled over twenty thousand miles, in cities the size of Kansas City, Chicago, New York, Little Rock, Tulsa, Wichita, and Denver, and in scores of other minor towns in the east, south and middle-west.

The group is characterized by excellent work at all times and has received enthusiastic praise by all who have heard it. Religious music is chiefly used in its program, but Negro spirituals and works of modern composers are included in the repertoire of this versatile organization directed by Professor Melvin H. Geist.

Membership to the choir is limited and is allowed only after students have passed qualifying examinations and have retained a good scholastic standing. Freshmen who enter at the first of the year are subject to immediate rejection if their work is not satisfactory. Usually a choir member is a member for four years.

The spring tour for the 1937 season was the short tour. Long tours and short tours alternate every year, allowing the communities in the near vicinity of Winfield to appreciate the work of the organization as do the other larger cities. The trip covered southern Kansas, and northern Oklahoma, during the ten days commencing with the Easter vacation.

Darrel Peter acted as president of the group, and Robert Ames directed the tour as business manager. Milton Stocking was student director.



*Top:* MURPHY, HULL, HAINES, OWENS, HOWELL, PETER, DEEVER, HODGES, SETTLES, HAYES, OTEV, ECKEL, HERRON, JONES, WEBBER

*Second:* STOUT, DAUNER, ELLIOTT, ARDERY, SIMS, AMES, ALLEN, RESLER, DUNGAN, YOUNG, TRUMBULL, DIETERICH, ENGLISH, ROGERS

*Third:* PARKER, SELLE, GRIER, ESLINGER, GUNCKEL, VAN VALKENBURG, STOCKING, MCINTOSH, BROWNLEE, WILSON, JOHNSON, THOMAS

*Bottom:* NEVENS, NATIONS, LENT, WILKINS, SCHMIDT, LAWRENCE, KIDDOW, PROF. GEIST, DALKE, BASORE, NURSE, LONDON, WARNER, EMERSON, MOLZ, STEVICK

## Symphony Orchestra

THE Southwestern College Symphony Orchestra stands for the best in instrumental music the college offers to the public. Composed of fifty of the most advanced students of the College of Music, under the direction of Dean Luther O. Leavengood, the orchestra reached its climax with the rendition of the "Elijah," the annual presentation of the Winfield Oratorio Society. This big event is attracting state-wide attention as a community musical project. Just as other centers have become the authoritative producers of the "Messiah," the city of Winfield and the Southwestern Symphony Orchestra is making the "Elijah" the official presentation of Southwest Kansas.

The repertoire of the orchestra includes major symphonies, difficult minor works, and music by modern composers. During the winter a duo-piano concert accompanied by the orchestra, was given in Richardson Hall.

The competition for ranking chairs in the orchestra is keenly felt by students. It is the ambition of every violinist to occupy the place of concert-master. Mr. James Bock, student instructor in the college, has held that position capably the past season. Other principal chairs are prized by students who have studied long and faithfully with their major instruments.

The work of the orchestra is not to be measured in one season. Many graduate students, former members of the orchestra, are now teaching other students the style and technique or symphonic arrangements they were taught in Southwestern College.





BOLES, SPEIRS, SHUSTER, GREEN, SHAFER, LITTLE, NILES, JOHNSON

## The Leneans

STRIVING to present religious drama in professional manner, the Leneans have probably succeeded better than most of the college organizations in advertising Southwestern to the Southwest Kansas Conference. Since its organization in 1927 at the suggestion of President Kirk, this group has gained in popularity throughout this section of Kansas.

Beginning in late January the players present their play every Sunday until late in March, the season ending with an annual tour through Kansas towns.

Each fall try-outs are held to select new members in the cast that will present the play on the average of thirty times a season. Unique among college groups in that it is entirely self-supporting, the players consider it a distinction to belong to this dramatic group directed by Miss Edith Dielmann.

This year the play presented was "The Rose On the Dial" by Irving W. Arnold. It deals with the early church in the fourth century and according to reports from towns where the play was given it is one of the best ever presented.

### THE CAST

Athenis	KATHRYN SHUSTER
Claudia	ELIZABETH LITTLE
Gaius	STEVE JOHNSON
Bernice	EDITH NILES
Philip	GENE SPEIRS
Soldier	PAUL BOLES
Marcus	CHARLES SHAFER
Fabius	ROBERT GREEN

*Director* . . . . . EDITH DIELMANN

Ruth  
Oncley



Above: MILLER, GRAHAM, KRELL, NEVENS, ONCLEY, KELLER, PARSONS, BURDEN, JOHNSON, HILFINGER, and VAN VALKENBURG at a dinner served by Mrs. Nevens in honor of the fall production "The Bishop Misbehaves." Scenes from the production are also shown.

Dear Lois,  
Remembers the good old days when we  
were in high school orchestra? It's been  
a long time. I always have thought  
you were swell. - Best wishes  
Ruth O.

## The Campus Players

"THE Campus Players," honorary dramatic organization of Southwestern College, has, for seventeen years, done its best to present vital and interesting drama to its loyal audiences, who have considered the two yearly productions of the organization the "best in college dramatics."

The members of the organization, varying in number from eight to twelve, are chosen for their histrionic ability as shown in society and dramatics class plays. Membership is tentative for one semester, and the suitability of the probationer's talents to the needs of the group must be demonstrated by his participation in one Campus Players play, as actor and in some staff position. Acting ability, love of the drama, enthusiasm and faithfulness are the requirements for full membership.

The 1936-37 Campus Players are especially enthusiastic as they face the future—for the hope of a new stage with adequate lighting equipment gives them a glow that only those members who have struggled with the small and primitively lighted cubby of Richardson Hall can appreciate. They have done well in the past; may they attain tremendous success in the future.



## Band

THE Southwestern College Band, under the direction of Professor Charles O. Brown, is a musical pep organization devoting its time and talent to the student body.

Supported by the student activity fund, its chief duty is to present an assembly program at a moment's notice, and strike up lively tunes for all pep rallies and pep meetings whenever called out by the Student President.

It's a familiar sight to see the students congregate on the sidewalk in front of the "O" and give a demonstration of what they would like to do to the enemy on the morrow.

Early in the winter, an All-School Carnival was held in connection with the student body, including all students in St. John's College, the Winfield High School, and the residents of Winfield to participate in the Halloween revelry. The profit of 125 dollars raised in this way was donated to the Band to buy new uniforms.

The Band always takes several trips with the football team during the season and makes one extended trip through Kansas towns, playing concerts for high school audiences.

Several times a year the radio station KFJH in Wichita has invited the band to play a program over the air. This is usually done the evening before the final basket ball game of the season with Wichita University.



## Jinx Janes

THE Jinx Janes endeavor to keep alive the "spirit of the Jinx" at all the college games. They have their special reserved section near the center of the lower bleachers during the basket ball season. There you can hear them every game giving vocal encouragement to the boys in purple.

They have some snappy drills worked out for a parade at the half, and they certainly do look chic in their white sweaters, skirts, caps, and gloves. They are especially proud of a huge purple "kitty" they often display at the game. It is a painted portrait of the Jinx that hovers near to aid in a Southwestern victory.

There is a rush week every year, and a huge banquet in the spring. The job of keeping people cheering at the games is the work of Peggy Wright, Elsie Keimig, and Emavee Wright. Presidents were Lucille Robbins and Betty Caffrey.

*Below:* BLAIR, NURSE, JOHNSON, B. PARKER, KIDDOD, MASTERSON, MCFALL, WILKINS, POTTER, MOLZ

*Second:* WRIGHT, VINSONHALER, TWYMAN, DOBBIN, MILLER, BYER, HIGHFILL, M. LIPPOLDT, STEVICK, MARBURGER, L. LIPPOLDT

*Third:* HUGGINS, GARDNER, LAKIN, CRAFT, R. ONCLEY, POUNDSTONE, WILSON, BROWNLEE, CAFFREY, ROBBINS

*Fourth:* SHOOK, KEIMIG, ALLEN, JONES, DRESSLER, CROW, SPITZE, LITTLE, HENDRICKS, VAN NATA, PORTER

*Fifth:* LUKE, NEVENS, GRIER, AYERS, STORY, TULL, STEVENSON, KING, J. ONCLEY





Left to right: MAWDSLEY, JACOBUS, HOOVER, TRUMBULL, MARKLEY, LAWRENCE, MCINTIRE,  
CLARK, ROGERS, COOPER  
HEITMEYER, WILMER, HUBENETT, ROBINSON, MOORE, YOUNG, PIKE, EMERSON, GREEN

## K K Club

K K is the insign'a of a small and select group of girls on Southwestern's campus who form one of the most remarkable pep clubs on the hill. Each year the number of places vacated by old members is filled with new girls chosen by unanimous vote. Within this group are the outstanding leaders in society, scholarship and organizations on the campus. It is the purpose of this club to foster a spirit of pep and loyalty to all athletic traditions of the college. It is up to each girl to make her contribution to a successful Southwestern year. Glee Young and Josephine Wilmer were presidents.

## Builderettes

Only girls who have won 300 or more A. A. A. points are entitled to membership in Builderettes. The club was organized in 1927 by Miss Lillian Cloud and has consistently carried out a program for better athletic enthusiasm and friendliness among the women athletes of Southwestern. Virginia Benson was president for the year.



Left to right: SIMPSON, OLDROYD, NURSE, WENIGER, POUNDSTONE, CLOUD, KNOWLTON,  
WRIGHT, NOVOTNY, McFALL  
KING, B. PARKER, PORTER, DOBBIN, BENSON, BRAY, NURSE, PARSONS, GROVES

MOUNDBUILDER ♦



S. C. M. Cabinet above: OLDROYD, T. NURSE, LENT, CHATHAM, STUDE, FRIEND, RITTER, JONES, COUNTRYMAN, MULVANEY, FRANKS, DIETERICH, F. NURSE, COWAN, SHELDON, RICKARD

## Student Christian Movement

WHOLESOME fellowship and the practical study of vital problems confronting the Christian youth of today are the outstanding features of the Student Christian Movement, an organization on the campus completing its second year. The Student Christian Movement is a merging of the Y. M. C. A. and Y. W. C. A., and was accomplished by a group of delegates to Estes Park conference in June, 1935. Co-chairmen were Freda Nurse, Leonard Cowan, Dorothy Dieterich, and Keith Franks.

## Pi Kappa Delta

Pi Kappa Delta is a national organization for the outstanding students of debate, oratory, declamation and extemporaneous speaking. Southwestern has a very active group under the direction of J. Thompson Baker. Miss Maxine Gilmore won first in the state in extemporaneous speaking. The annual national debate tournament held at Southwestern attracted fifty-seven colleges and Universities from ten states. It is Dr. Baker's plan to make Southwestern the debate capital of the United States.



Above: HILFINGER, GREEN, MILLER, OWENS, YOULE  
STUDE, YARBERRY, BROWNLEE, MILLER, HUBENETT, ALLEN  
CLOUD, GARDNER, BAKER, MOSSMAN, PIKE, GILMORE, ROBBINS

Dear Sirs: I know you before I came to S. C. and I am certainly glad I have gotten to know you better this year. I hope to know you better next year. Love, Barbara Barber

◆ THIRTY-SEVEN



*Above, left to right:* NEAL, WASHINGTON, SHOOK, FRANKLIN, COTTOM, PLUM, POUNDSTONE, COUNTRYMAN, SPONENBERG, BAI MAN, HODGE, JOHNSON, NILES, BROADIE, JONES, NURSE, FRANKS, McLAURIN, COOPER, PALMER, SHELDON, STEWART, ERICSSON, WOOD, B. SMITH, I. SMITH

## Cosmopolitan Club

ALTHOUGH there are no foreign students in the Cosmopolitan club this year, there has been a genuine interest expressed in the entertaining of such guests as Moni Sen and John Alexander at a dinner held in the Brettun Hotel. Arthur Chen also presided at a very interesting informal discussion. "Cosmo" was sponsored by Miss Emily Ericsson before her resignation in favor of Miss Mary Wood. Ruth Stewart was president.

## Oxford Fellowship

Practical methods of reaching and interpreting Christian ideals have been studied by the Oxford Fellowship as the theme for the year. In accordance with this plan, a new form of meeting was adopted by the organization made up of student ministers and religious workers, whereby short talks and group discussions were given. Several members of the club held church worship services during the year. Frank Ebright was president, Martha McWilliams, secretary, and Ruth Stewart, program chairman during the year.



*Above, left to right:* MODSCHIEDLER, FISHER, HANKS, STEWART, CONARD, RESLER  
*2nd row:* METTLING, McWILLIAMS, EBRIGHT, LITTLE, MILLER, HAINES, COUNTRYMAN





*Left to right*—JOHNSON, BROWN, NURSE, OLDROYD, YOUNG  
DOTY, BATY, EVERS, MOLZ, LIPPOLDT

## Kappa Omicron Phi

THE Mu chapter of Kappa Omicron Phi, National Honorary Professional Fraternity for Home Economics majors was organized in 1929 and has successfully functioned since then. Members are selected on the basis of scholarship, leadership and character. Assisting Miss Evers as officers are: Elsie Baty, President; Maxine Doty, Secretary; and Glee Young, Treasurer.

## Gamma Omicron

GAMMA OMICRON is an honorary local organization for Home Economic majors and minors chosen from the sophomore, junior and senior classes on the basis of scholarship. The organization was founded in 1921 and has since given training in poise and leadership to those interested in the profession of home building. Maxine Doty and Helen Duckworth were presidents for the year.



*Above*—MILLIKEN, TWYMAN, DOTY, BROWNLEE, MISS EVERS, ALLEN, GEE, WENIGER,  
DRESSLER

*2nd row*—L. LIPPOLDT, JUNE, KING, DUCKWORTH, BASORE, VANNATTA, M. LIPPOLDT, BROWN,  
PARTRIDGE

## ◆ THIRTY-SEVEN



*Left to right: HARP, JONES, LAKE, AYERS, McINTIRE, THOMPSON, SPONENBERG  
PIKE, COOPER, DR. MARSH, MISS CLOUD, MOORE, WILMER, HOLCOMB*

## Inter-Society Council

To act as mediator in case of good society arguments, and to promote friendship between them, to control the habit of personal rushing, and to regulate rush week itself, is the duty of the Inter-society Council. Dr. Marsh is chief umpire. This year they were faced with the problem of deciding the important issues of the struggle to change the literary societies to social societies, and the movement to include all students in school in the rush program of the six organizations.

## Phi Epsilon Pi

Forty of the peppiest men in school form the nucleus of the male students' enthusiasm at the intercollegiate games. Organized in 1935, this club has kept the fans alive with their chatter, their pranks, and their flashy sweaters during the games at Stewart Field House. A good stiff paddle session is the best way to get into the club, and that bit of initiation is done in public for the delight of the gallery. Don Goforth and Al Schwint preside over the business meetings.

*Below: WADE, SHRAUNER, GEISSLER, GREEN, MILLER, WARNER, FRANKS, ROHL, BROADIE, CASEY*

*Second row: FRIEND, COWAN, COUNTRYMAN, METTLING, YOULE, SHAFER, SCHMIDT, HAYS, SWANSON, SHANNON*

*Third row: LENANDER, POLITZER, SPITZE, GRAHAM, FLEENER, H. HOLECEK, JOHNSTON, RITIER, THOMPSON, GORSUCH*

*Fourth row: BROWN, KELLER, SPIERS, SPONENBERG, DEEVER, SCHWINT, YORK, WRIGHT, JOHNSON, W. HOLECEK, GOFORTH*





*Above left:* The two Twin Coaches meet at the corner of Ninth and Main for the main stop of the route. They make a fifteen minute run from College Hill to the city proper, and also circle out through the south and east section of the city.

*Above right:* Mr. Elmer Reeve, owner and operator of the Winfield Bus Service. "Speed" suffered severe burns on the hands and face a few months ago when his bus garage burned and caught him beneath one of the buses making repairs.

*Lower left and right:* Student drivers, Bob Davidson, Ernie Callison, Chalmer Woodard, Harley Holecck, Wayne Holecck, Raymond Henderson, Mr. Reeve, Wyatt Cooper and Kendrick Cunningham keep the buses operating between the hours of 5:55 and 11:30 every day and night.

## Winfield Bus Service

**A**MONG the organizations on the campus, none affect the students more than does the Winfield Bus Service, operated by a former student, Elmer Z. Reeve. Two years ago Mr. Reeve introduced a complete new service with up-to-date motorized streamlined buses.

It is no disgrace to take a date on the 5c bus instead of the 15c taxi. In fact, when a student wishes to take his date for a ride, he boards a bus and keeps on riding for an hour or so. It doesn't make money for Mr. Reeve, but no one has ever heard him complain of the practice.

Most of "Speed's" drivers are students at the college. In this way he is helping put eight young men through college, by providing them with steady employment. For this and for many other reasons we wish to acknowledge the service Mr. Reeve is rendering to the college young people.

So, if you ever get to Winfield, be sure to ride the Twin Coaches to the College.



## Camera!

THE four oil derricks were torn down in the spring. Three senior leaders. Looking at quizz grades in the shelter of the columns. East Hall on April Fool's Day. Prize winning Sigma-Delphi play, "Dregs." Holmes feels the blood rushing to his head. Al and Marcia. If you look close enough you can see him washing the windows. The "O" company. Marcia again, popular freshman! The spoon holder and the engaged! Imitation of Marth Raye, no doubt. Forty-eight are missing. Plum hates electricity, just ask Prof. Brown. Gobs of sweeping at North Hall. Mr. and Mrs. Pomeroy after Christmas. Prexy didn't stop this one quick enough. It certainly would be nice to be able to talk a lot and go on one of those debate trips to Texas. The girls are Robbins, Gilmore who won the state extemporaneous speaking, and Pike.



## *Mildred Pike*

HOMEcoming QUEEN

A WOMAN of great intelligence and physical charm, whose abilities are versatile and personality compelling, was chosen by the athletic minded young men of the college to reign as Queen over their gridiron festivities.

◆ THIRTY-SEVEN





## *Esther Stuber*

QUEEN OF MAY

**P**OSSESSING the fresh loveliness of the spring, Queen Esther reigns with unassuming majesty. Charming both in manner and in person, she brings to the May festivities that note of dignity which marks the true Queen of the May.

MOUNDBUILDER ♦



## *Bill Porter*

MASTER OF CEREMONIES

**B**ILL PORTER is president of the Student Council and student body. He was captain of the championship 1936 Builder basket ball team. He has a fine scholastic record. Apparently, he is the most popular student in school, and no one seems to resent his success and popularity. These facts speak eloquently for him.

Unassuming, industrious, and conscientious, Bill approaches very near to the Christian student ideal. Southwestern students could have made no wiser choice in selecting their chief representative.



## Virginia Moore

MOUNDBUILDER QUEEN

THE vital friendliness and the sympathetic warmth of heart that characterize Virginia Moore have made her the leading personality of the freshman and sophomore classes.

MOUNDBUILDER ♦

M. D. HOLMES

MILDRED PIKE



BOB THOMPSON

GLEE YOUNG



LOWELL MILLER

WINIFRED JONES



## Master Builders

THREE men and three women of the senior class, were chosen by the student body to represent the best in campus leadership and popularity. To them is given the honorary title of Master Builder.



DIETERICH



MOORE



TUCKER



GREEN



ROBINSON



SPEIRS



LAWRENCE



Dear Lois -  
 Memories - those of high school  
 and college will always occupy  
 a satisfying and pleasant place  
 in my mind. So you re-  
 member physics class to men-  
 tion only one? My best wishes  
 for your success and happiness  
 will always be with you.  
 HUBNETT Bob G.



BROADIE



## Popular Underclassmen

THIS year, for the first time, five members of the freshmen and sophomore classes were chosen by the student body as the most popular underclassmen of 1937.

MOUNDBUILDER ♦



It's bad for Krell to be without clothes, but it's all right for the girls to ride away. The Hendersons *will* stay that way forever. The iron-jawed roommate will always need a shave. Opening night will never come. But the sad story is the girl who is off her feet and will always stay that way because of a mean snappy man. He ought to be punished, so make him walk up 77 every day to a one o'clock class.

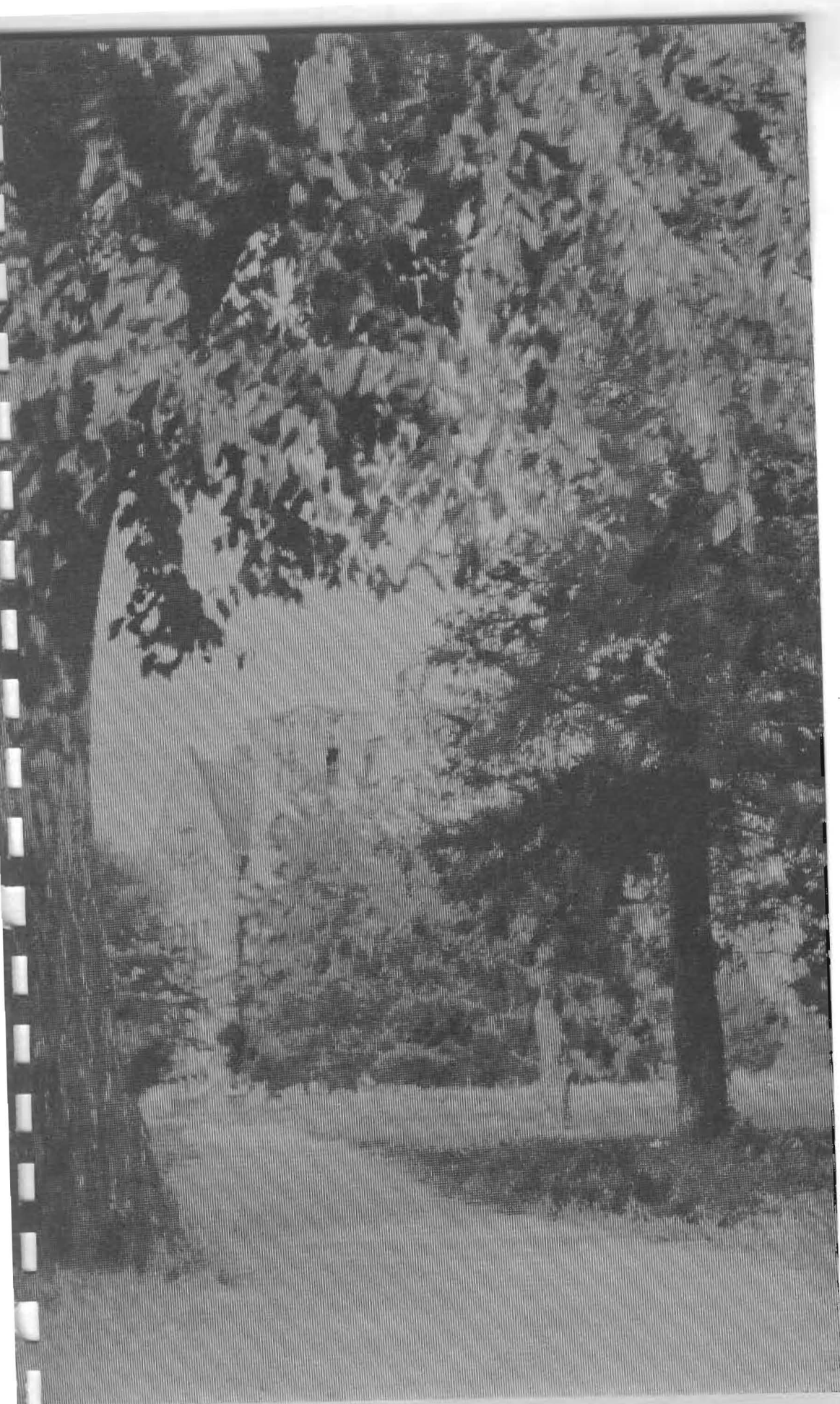
Page 101





Stewart Field House, the home of champions! Hinshaw coming in for a fast set-up to win over K. U. in first game of the season. Dedication of third successive C. I. C. Basket Ball Championship in victory graveyard. Football feud with Wichita. Builders on the bench. Coach Wm. Monypeny.

**MOUNDBUILDER** ♦



North Hall



## Athletic Directors

THE intercollegiate sports of Southwestern have been directed by Coach William Monypeny, aided by Assistant Coach Cooper. Southwestern, as a member of the Central conference, takes part in basket ball, football, and track. Coach Monypeny has instilled in his men a spirit and an attitude which makes them ever a factor to be reckoned with in conference races. He has been especially successful in basket ball, having made Southwestern attractive to graduating high school cage stars. Then, having secured the material, he has proved, by producing championship teams, that he knew what to do with it.



COACH WM. MONYPENY

The resignation of Coach Monypeny as the head of Builder athletics was announced at the close of the 1937 basket ball season. To the deep satisfaction of the administration and student body, who regretted his resignation, he will continue with Southwestern in other capacities. Don Cooper has been selected to direct football, but a basket ball coach has yet to be chosen.

Under the leadership of Miss Lillian Cloud, director of physical education for women, intramural sports for women have been organized. All the women's athletics are sponsored by the W. A. A. During the year, tournaments have been held in volley ball, basket ball, baseball, badminton, tennis, and ring tennis. Points are awarded for participating in these activities and for hiking, keeping health rules, perfect attendance in gym classes as well as for scholastic achievement. When 300 points have been earned, the woman is entitled to membership in Builderettes, the W. A. A. pep club. The white "S" sweater is given for 1500 points and the Southwestern blanket for 2000 points.

The men's intramural program is under the direction of Coach Don Cooper. Tournaments are held in basket ball, tennis, wrestling, and boxing. This year a new point system is being used in the tournaments. Points are given the teams for the number of men competing in each game, and for the number of games won. Points are deducted for games forfeited. The winning organizations and individuals are presented with trophies and medals.

Southwestern is a member of the Central Intercollegiate Conference.



DON COOPER



LILLIAN CLOUD



# Football

SOUTHWESTERN'S 1936 football season was far less rosy than the basketball season which followed, the purple gridmen turning in but one victory in nine games.

Despite her lack of victories, Southwestern succeeded in completing 53 passes, while her opponents completed only 26. The local team held the yardage gained in scrimmage by her opponents to 1995, gaining 1,120 itself. While the visitors were earning 106 first downs, Southwestern slipped around and through the line for 75.

When the all-Central team was announced, Southwestern's captain, Bob Baltzell, was listed as captain, playing the guard position.

The Baker University gridsters defeated the Builders in their opening game, 6-0. On October 1 the Builders journeyed to Emporia where the College of Emporia took a hard-fought battle, 7-0. A week later Southwestern gave Fort Hays a hard fight on Alumni field before going down to defeat, 25-0. Southwestern's only threat at the goal was ruined when the team became over anxious and was handed a penalty.

The next game was with the Emporia Teachers, played on the Hornets' gridiron. The Teachers built up a margin in the first half that was sufficient to withstand a Builder rally early in the last half. The sensational play of the game was a 26-yard pass from Woodard to Washington for a touchdown. The other scoring play of the game was made by Mayse in a short line plunge. The final score was 31-13.

Top, left to right: WEBB, half-back; MAYSE, fullback; MARTIN, tackle; DORSEY, tackle; GILLISPIE, end; MUSICK, center; McDONALD, end; YOUNG, tackle; WOODARD, quarter-back; DAUGHERTY, guard; MCCOV, half-back; ROHL, guard; PHILLIPPI, guard; BROWN, end.

MOUNDBUILDER ♦



Never to one, smart girl especially.  
saying Texas is larger than India. "1936" 'Hs!  
After all I think you're one swell kid.  
As ever Jack Daugherty



# Football

October 23, Southwestern won its sole victory of the season, defeating Ottawa University, 6-3, at Ottawa. With the Purple gridsters on Ottawa's 30-yard line, and only fifteen seconds to play, Woodard threw a pass to Gillespie, who snatched it and dashed across the line for the winning touchdown.

Pittsburg won from the Builders at Winfield, 31-0. The Gorillas showed their best form, and broke through the Purple line for two touchdowns late in the second period, added another in the third, and scored twice again in the fourth period.

A touchdown in the fourth period spelled disaster for the Builders in their annual homecoming game, played this year against the Bacone Indians. The local team was badly crippled, several of the better players being out of the game. The final score was 6-0.

An intercepted pass started a drive for Southwestern State Teachers' College that the Southwestern Builders were unable to stop until the scoring stripe had been crossed. A second score for the Teachers was made off a bad punt, soon after the first score. The game ended at 13-0.

The outstanding game of the season was with Wichita University, at Wichita. The Builders held the Golden gridsmen to a scoreless tie for the first half, but the extra weight of the Shockers had its effects, and late in the third quarter the Wichitans broke through for their first touchdown, then soon crossed the goal again, leaving the score 13-0 at the end of the period. In the fourth period a Builder drive carried over the goal line. Brown took a neat pass and Kaufman placed the kick. The game ended 19-7.

*Top, left to right*—HALLING, end; DALBOM, end; McNUTT, guard; KRIEL, tackle; DUSENBURY, half; GORSUCH, quarter; SHAFER, guard; JONES, guard; MARINE, end; BRATCHES, quarter; SHEPHERD, tackle; WRIGHT, guard; and WASHINGTON, half.

## ◆ THIRTY-SEVEN



# Basket Ball

## *Builders in Triple tie for C. I. C. Championship*

UNDER the expert guidance of Coach "Bill" Monypeny, efficiently assisted by Don Cooper, basket ball squads have been developed at Southwestern which have succeeded, for the last three years, in holding a place at the top of the Central conference. Two years ago Pittsburg was tied for first place, last year the Builders were undisputed champions, and this year Southwestern overcame a mid-season slump, the result of sickness and injuries, in time to tie with Hays and Pittsburg for conference honors.

Although Southwestern has had some of the finest individual players in the Central conference, her chief strength has been based on an unfailing supply of capable reserves. Coach Monypeny, an expert in the use of substitutes, has been able to take out first-string men, when he saw fit, without serious doubts as to whether or not the subs could cope with the situation on the court.

This year the Builder cagers have exhibited power and technique in variety. The speed and deceptive playing of such men as Hinshaw and Marvin Tucker, the basket-shooting ability of Lloyd Tucker and Bratches, and the consistent, effective offense and defense of Traugott and Bill Porter, not to mention the often brilliant playing of other squad members, accounts for the team's standing and reputation.

The Builders started this season at home by winning over the University of Kansas in a real thriller, 26-22. The Jayhawkers had revenge on their own court a week later.

At this point the Purple squad entered into the early part of a slump which threatened, a bit later, to eliminate it from serious consideration as a contender for Central conference honors. After losing several non-conference



PORTER, *Guard*

BRATCHES, *All-conference  
Guard*

TRAUOGOTT, *Center*

TUCKER, *All-Conference  
Forward*

**MOUNDBUILDER** ♦

# Basket Ball

## *Win Top Honors for Third Consecutive Season*

games it did manage to defeat the Wichita Shockers, in the Builders' first conference game. Hays, the next conference foe, got away with a one-point victory at Hays. The second encounter with Wichita followed, and the Shockers were again subdued. Thus far, the race within the conference hadn't been so bad, for it is no disgrace at all to lose a game by one point to Hays.

At about the first of February, however, the Builders really slumped, with several important men injured, or in the hospital with flu. Emporia, unable to defeat any other Central conference team, gave the Purple team a walloping at Emporia. Southwestern came back enough to defeat a not too impressive St. Louis University team at home, but lost two conference battles to Pittsburg on the Gorillas' floor. With four defeats and two victories, and the season half over, it looked as if Southwestern's stars might as well start training for track. They seemed, however, to think and feel differently. Having recovered from divers illnesses and injuries, they started a comeback, at home, by cleaning the dangerous Hays team twice on successive evenings. Pittsburg next came to Southwestern, and received similar treatment. Then the Emporia squad motored to Winfield for a couple of games, and motored back to Emporia with two more defeats marked against it.

With Hays and Pittsburg through with their schedules, and tied at eight victories and four losses each, it remained for the Builders to defeat Wichita on the Shockers' court, in order to share first place with the Tigers and Gorillas. This, after trailing dangerously in the first half, they succeeded in accomplishing with a sensational burst of brilliant playing.

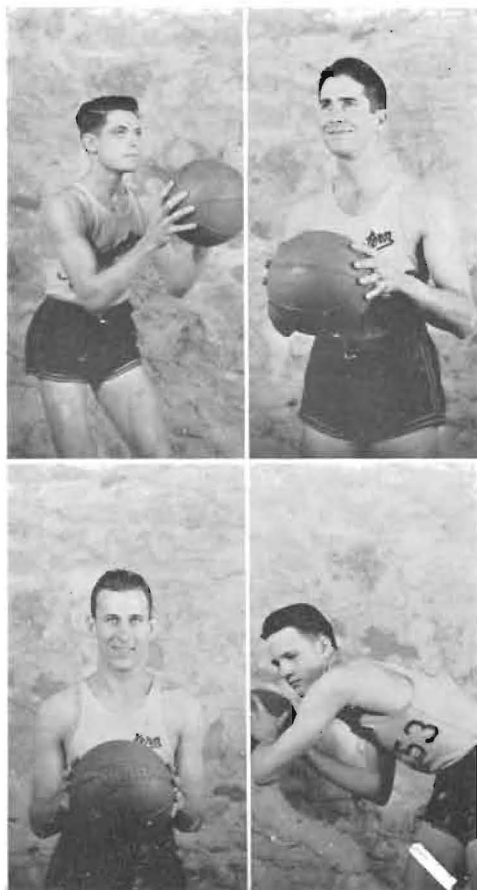
HINSHAW, *Forward*

CLARK, *Guard*

MCDONALD, *Forward*

M. TUCKER, *Forward*

### ◆ THIRTY-SEVEN



# Basket Ball

On March 9th, the Southwestern team went to Kansas City to participate in the Missouri Valley Amateur Athletic Association tournament. South Dakota was defeated in the first game, but the powerful Warrensburg Teachers won a four-point victory from the Builders in the semi-finals, then won the tournament. Southwestern came back to finish third by defeating the Arkansas State Teachers.

Thus ended a spectacular comeback from the cellar position at the beginning of the season to the triple tie for the Central Inter-collegiate Championship of Kansas.



## SEASON RECORD

S. C. won K. U.....	26-22
S. C. lost K. U.....	27-39
S. C. won S. S. T.....	41-25
S. C. lost Texas T.....	47-49
S. C. lost O. C. U.....	41-48
S. C. lost Alva T.....	33-43
S. C. lost Warrensburg..	34-45
S. C. won W. U.....	45-34
S. C. won Mex. Y.....	47-16
S. C. lost Hays.....	36-37
S. C. lost Kan. S.....	30-59
S. C. won W. U.....	46-35
S. C. lost Emp. T.....	29-39
S. C. won St. L. T.....	39-22
S. C. lost Pitt. T.....	27-33
S. C. lost Pitt. T.....	29-36
S. C. won Hays.....	38-33
S. C. won Hays.....	34-30
S. C. won Pitt. T.....	35-24
S. C. won Emp. T.....	40-25
S. C. won Emp. T.....	51 27
S. C. won W. U.....	43-36
S. C. won South D.....	54-26
S. C. lost Warrensburg.	34-38
S. C. won Ark S. T.....	46-38

QUINN, Forward

C. PORTER, Guard

GORSUCH, Forward

GILLESPIE, Guard

GREEN, Forward

SMITH, Center

**MOUNDBUILDER** ♦

# Track

## MEMBERS OF THE TEAM

Jack Gorsuch, 100-and 220-yd. run, broad jump  
Karl Webber, shot put, discus, javelin  
M. Tucker, high jump, 220-yd. run  
A. Webb, 120-and 220-yd. hurdles, mile relay  
R. Baltzell, shot put, discus, javelin  
C. Porter, 120-and 220-yd. hurdles mile relay  
J. McNutt, 440-yd. run, mile relay  
J. Harrington, 440-yd. run, mile relay  
V. Gillespie, 120-yd. hurdles, javelin, pole vault, high jump  
R. Brown, 880-yd. run, mile run, high jump  
R. Whitesell, 440-yd. run, mile relay  
G. Geissler, javelin, broad jump

THE 1937 track team turned in a fair season's record. Winning several dual meets with local rivals and universities in Oklahoma, the boys showed more power in the field events than in the dashes. A majority of the lettermen were underclassmen, giving promise of a better future.



Left to right: WEBBER, BALTZELL, WHITESSELL, BRATCHES, BROWN, GILLESPIE, OSTERHOUT,  
Coach COOPER

Front row: QUINN, WEBB, McNUTT, GORSUCH, GEISSLER, and HARRINGTON



## Intramural Sports

SEVEN sports were included in the men's intramural program: touch football, basket ball, ping pong, track, tennis, wrestling and boxing. Every man in school may enter any one of these divisions for the training in the sport he desires. Practically half of the student body takes part in these body building sports.

The basket ball league was again the most popular. More than 100 boys signified their desire to play. These boys were divided into seven teams of almost equal ability. Points were given for winning games and for men participating. Twenty points were given for winning a game and one point for each man participating in the game.

### FINAL STANDING IN BASKET BALL

Delphi "B".....	198 points
Barber Shop.....	143 points
Band.....	133 points
Meadow Lark.....	120 points
Laconian.....	118 points
Delphi "A".....	98 points
Athens.....	89 points

The Ping Pong tournament, a new event this year, was a major attraction. Gunckel and Moore, Bratches and Tucker, Gillespie and Hinshaw, and Traugott and Baltzell were strong doubles teams.

Jack Forrester won the finals in the singles by defeating Charles Curtiss. Paul Branine and Ed Warner were outstanding players also. The singles tournament was the largest in the Intramural program. It takes a pretty fast athlete to whip the little pellet across the net.

### Delphi B Champions

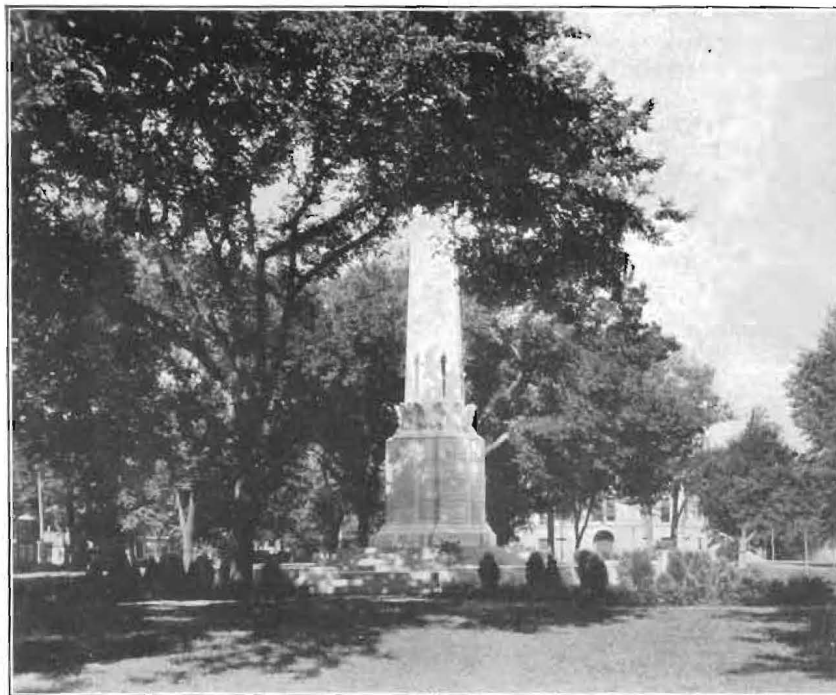


Top row: MARTIN, center; LAKE, forward; CARRIER, forward  
Center: EDGELL, forward; METTLING, forward; LUNANDER, forward  
Front row: POLITZER, forward; SCHWINT, guard; WHITESELL, guard; HAYS, guard; PHIL-  
LIPPI, guard

MOUNDBUILDER ♦

## Winfield Subscribers

College Hill Drug Store, J. D. Mundis, Mgr.  
College Hill Barber Shop, Lester Belt, Prop.  
First National Bank, 900 Main.  
Staley's Studio, 206 W. Ninth.  
Dr. Warren F. Bernstorf, State Bank Bldg.  
Chamber of Commerce, 921 Millington.  
M. B. Kerr Co., 112 E. Ninth.  
Winfield Building & Loan Assn., 106 E. Ninth.  
Drs. Martin & Hilfinger, 103½ E. Ninth.  
Jack Lane Chevrolet Co., 115 W. Eighth.  
Waldo Shelly, State Bank Bldg.  
Pierce Book Store, 810 Main.  
Vincent Grocery Store, 1001 Main.  
Winfield National Bank, 901 Main.  
Dr. Benson, 103½ E. Ninth.  
Dr. Kelley, 103½ E. Ninth.  
Dr. P. W. Gibson, 103½ E. Ninth.  
Dr. C. C. Hawke, State Bank Building.  
J. B. Lynn Department Store, 721 Main.  
Dr. C. M. McCue, State Bank Bldg.  
Railway Express Agency, Inc., W. A. Perciful, Agent.  
Dr. C. T. Ralls, 103½ E. Ninth.  
Dr. N. B. Fall, 905½ Main.  
Sheneman Meat Market, 917 Main.  
Elmer Z. Reeve, Winfield Bus Service.  
Drs. Snyder, Jones, Snyder & Snyder, 103½ E. Ninth.  
Rev. E. F. Wilcox, 715 Millington.



## Notice Staff Members

**G**O HOME! Relax. The book is completed. No confounded editor can call you on the phone demanding more copy. Your 1937 staff duty is over. Now you can honestly say, "Wasn't it a lot of fun", or can you?

Well, anyway, I want to thank you for your good work. All of you who stuck with me through the year should have a just reward. How about a nice Moundbuilder dinner?

Dunbar McLaurin was the chief object of my frustrated temper. Whenever things went wrong I usually jumped on Dunbar. But he only grinned and took it good naturedly. He christened himself the official "de-copperizer." Meaning the lad who tore the old copper cuts from their wooden base so we could sell them for junk. He did nice work on page 25, don't you think?

Eula Van Natta was a main cog in the production this year. She helped me faithfully and well. After her work was completed no one thanked her but me, but then, perhaps they didn't realize how good a worker she really was.

Al Schwint started from scratch in the photography department, but say, how that boy improved before the year was over. During the month of March, when I had to turn my attention from photography to copy writing, Al took complete charge of the darkroom and turned out some mighty fine pictures.

Winifred Jones did a neat job with the Senior class section. It is no easy task to find all the data on the high-and-mighty seniors. And the same is true of Mattie Grace Trumbull who wrote the copy for the junior section. The juniors aren't quite as proud of their record and don't get in all the material needed.

Marcia Hubenett and Lena Anderson are two freshmen wonders! They are an editor's dream of perfect help. Always ready, always capable of doing the job, and always *on time*. Marcia typed page after page of copy, and Lena interviewed and wrote it for the editor. Good work, girls!

Marjorie Thompson found time from her duties as editor of the Collegian to give a number of interesting write-ups for organizations. Vic Sponenberg kept an accurate record of all games won and lost, and wrote the stories for the athletic section.

Bob Boles managed the publicity. Dean Settles wrote copy. Charles Curtiss did a fine job as re-write man at the last minute, and Miss Mary Wood proofread all copy. Her red pencil corrected thousands of minor errors that the staff had overlooked.

I thank you all for your splendid work.

LOWELL MILLER, *Editor*.

P. S. M. D. Holmes said to thank Keith Franks and Leonard Johnson for their brilliant work as assistant business managers.

L. N. M.

**MOUNDBUILDER** ♦

Dear Lois, It has been fun knowing you  
 this year, even though we don't get to see each  
 other very often. Remember the picnic! and the  
 food. This old S.C. does hold a lot of memories doesn't  
 it. Good luck to a very sweet girl.  
 Edna Miller.

Burger  
 Baird  
 Engraving Co.

GRAPHIC ARTS  
 BUILDING  
 KANSAS CITY



SUSTAINED LEADERSHIP  
 YEAR IN AND YEAR OUT  
 IS DESIGNING DISTING-  
 UISHED YEARBOOKS AND  
 MAKING PERFECT  
 PRINTING PLATES



MIDLAND  
PRINTING  
COMPANY  
*Jefferson City, Missouri.*

•  
*The Mark of  
Fine Printing*

*I shall remember you as one of my first  
acquaintances at Southwestern and have  
appreciated your friendliness.*