

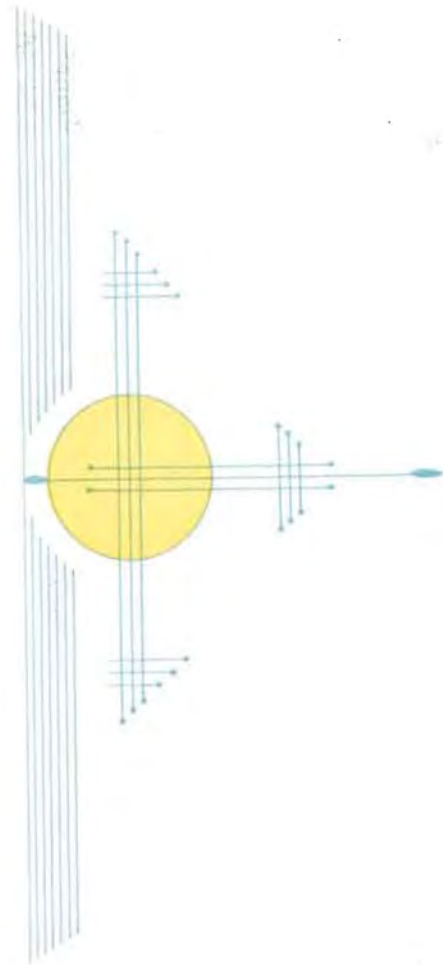


THE 1931
MOUNDBUILDER

**COPY-
RIGHTED**

**CHRISTINE WHINERY
EDITOR**

**ORVILLE STROHL
BUSINESS
MANAGER**



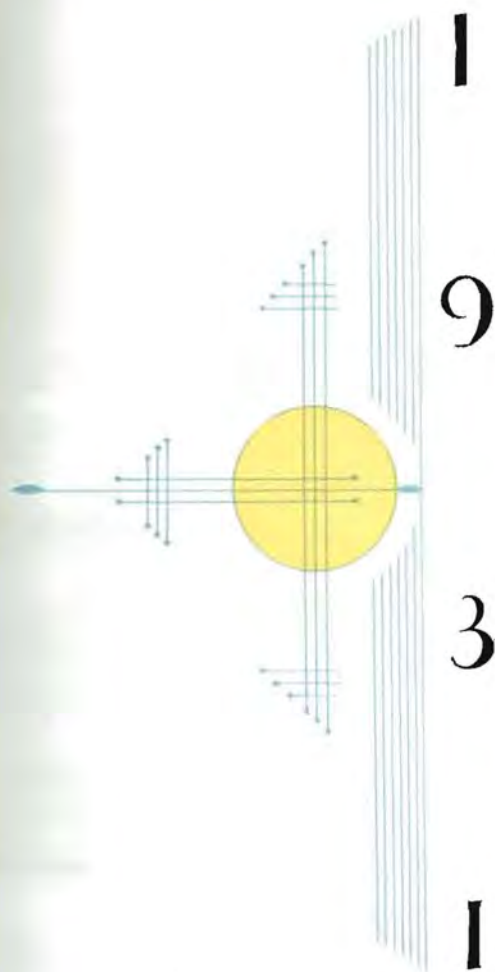
LD511
555
M2
1731



The MOUNDBUILDER

PUBLISHED
BY THE

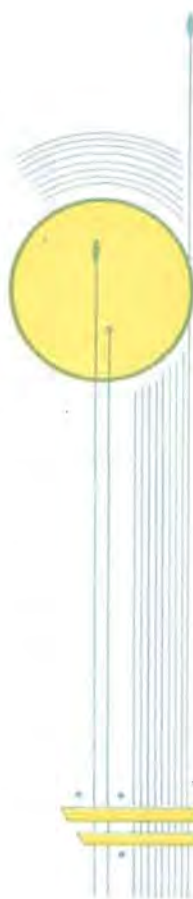
STUDENT BODY
OF SOUTHWESTERN
COLLEGE AT
WINFIELD,
KANSAS





EDITOR'S L

This is your
book. It is
for you, about you,
and in a very real way it is
by you. In fact, its prime pur-
pose of re-creating a year of South-
western College can be achieved
only by your warm-hearted coopera-
tion in the sympathetic, imaginative
reading of these pages. No true
Moundbuilder has lived this
year to himself only. If
only one of us had been
here, this would not
have been South-
western College,





PREFACE

no matter how
bright the dome, how
sturdy the walls, how
green the trees and grass.

A college year is made up of
people and the things they do.
Vividly realizing this mutual de-
pendence of reader and editor, and
the essential unity of our college lives,
we have chosen as the theme of our
book that ceremony whereby, as
freshmen, we become Mound-
builders, and as upperclassmen
we are each year re-dedicated
to the service of our be-
loved Alma Mater—
or in other words,
to each other.

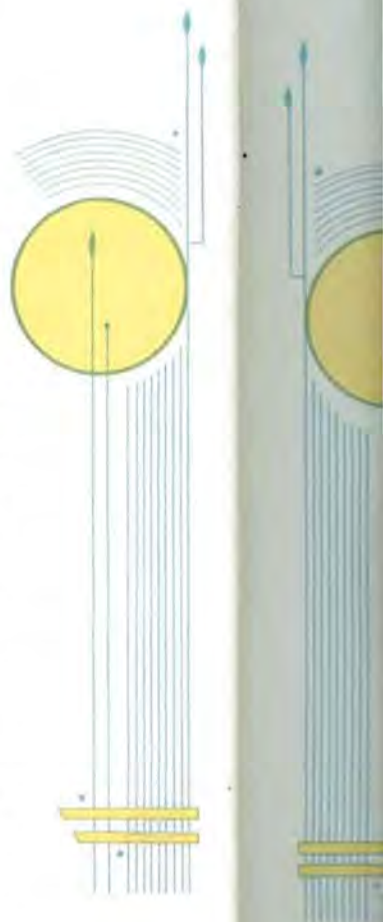
22644





DEDICAT

All of us
love Southwestern,
and each of us serves
Her according to his talent;
and none of us need to yield
place to another in loyalty and zeal.
But to some it is given, from time to
time, to catch a greater vision, and as a
result to render a greater service; and to
them it is not only fitting but joyous to pay
tribute. Dean Leroy Allen, stand up!
It is you we salute. It is to you we
dedicate our book. In conceiv-
ing and launching our ceremony,
"The Building of the Mound,"
you gave us not only a
custom unique in the
college world,





ATION

but also a
quicker, more vivid
sense of what it means
to be sons and daughters of
Southwestern. You dramatized
the Moundbuilder spirit. This is
only one of many services you have
performed and are performing for us.
Your keen insight, fine ability, and steady
devotion have enabled you to be always
a doer of great things. But the greatest
of these is just in being yourself. By
dwelling among us, you enrich the
life of Southwestern College, and
you send us out richer. We
shall always remember you
with honor and
affection.





CONTENTS

BOOKS

S. C. DAYS

C O L L E G E

ORGANIZATIONS

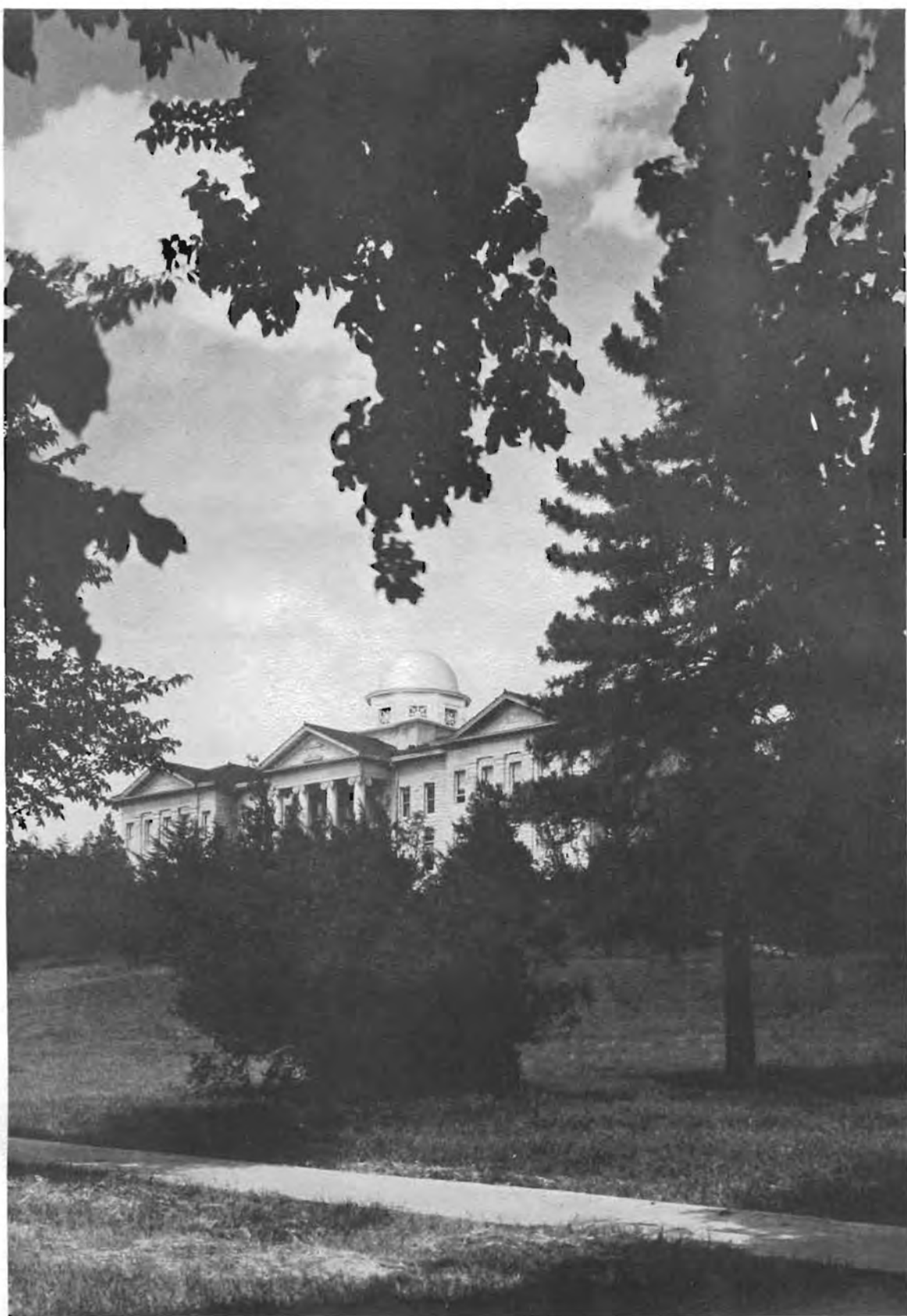
ACTIVITIES



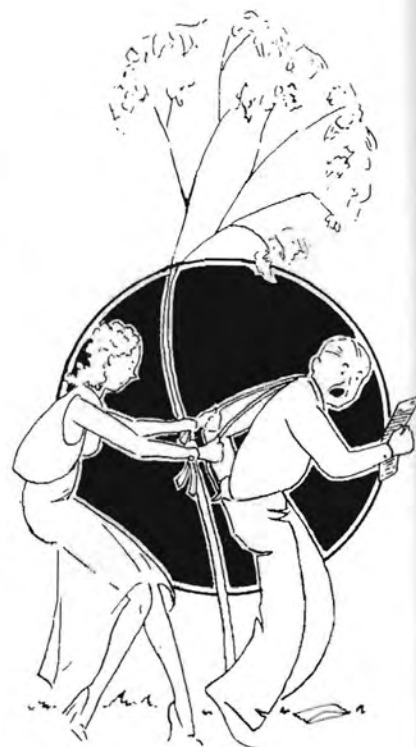


S. C. DAYS





A tradition of fragrant lilac—slender pine—temple of knowledge.



Fall fights and rights; treacherous steps to shut-in days; sophomores swim the Walnut; the underworld gang builds the mound; we see the final round of the Kelly-Moncrief duel; both the "S" and "freshies" get a whitewash bath; "Picnic Pants"; class day is over.

Soul
the "P
A. tak
tivities
Band
Yeah!
Main
Hip, I



Southwestern Parades—led by the "Prize" Pullman; the W. A. A. takes a ride; Main Street activities halt while we parade; S. C. Band struts its stuff; flat tire, Oh Yeah!; "We're in the army now"; Main and Ninth join in a "Hip, Hip, Beat Fairmount!"





Shadows dance on the cool deep grass—lazy clouds float by—the passing student is invited to cast himself on the soft grass, and bid time stand still—but days run swiftly by—and life goes on—.

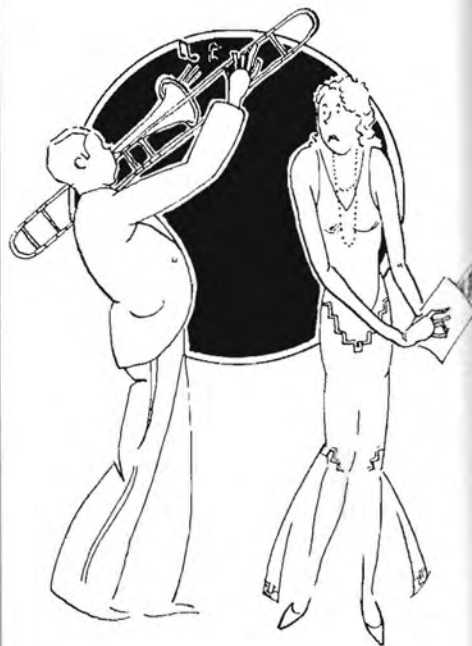
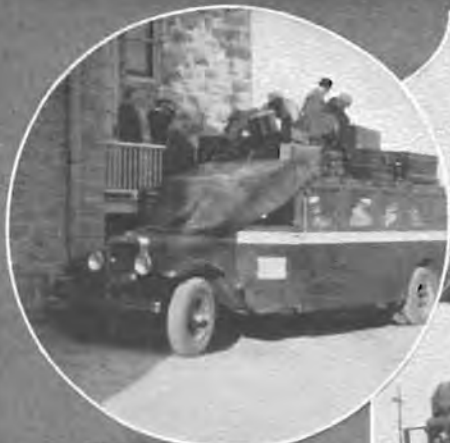


A ne
has com
Store; c
the alwa
"squirts
a breat
store di
as wel
Maunis
No. 2;
lates to
but fina

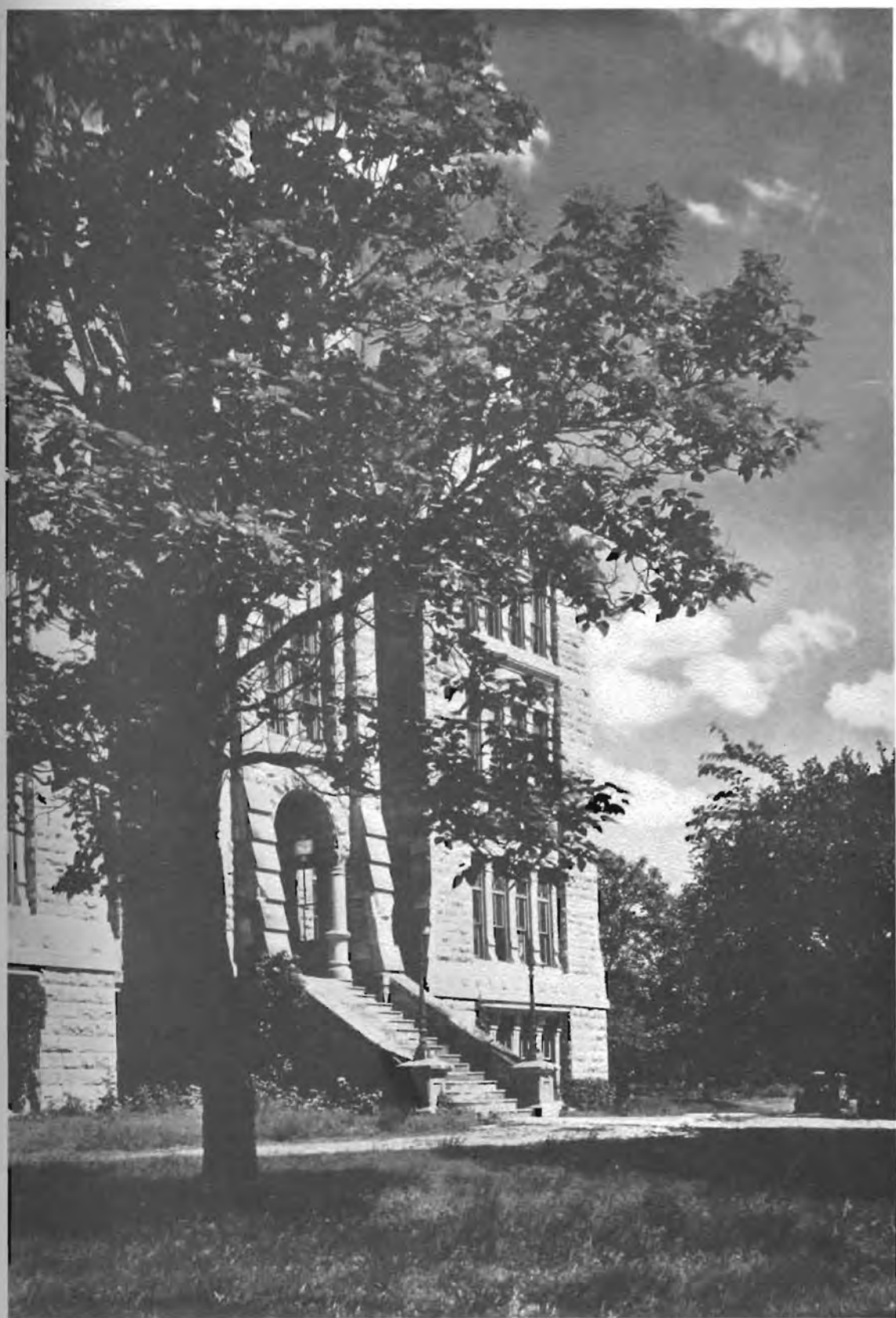


A new addition, but one that has come to stay—Bird's Rexall Store; an unusual glimpse into the always crowded interior; soda "squirts" and manager pause for a breathing spell; the downtown store displays attractive interiors as well as pleasing windows; Maunis Godby, manager of Store No. 2; the downtown force hesitates to have it's picture taken, but finally consents.





Professions of every kind; Band and A Cappella loads luggage for days of fun and work; one final grin at the camera man; wind-blown lassies who study some; up the winding steps to wisdom—the most popular man on the campus. Spring is here!—To go to class or cut—Mutt and Bruce stop to decide.



Time-marked—age worn—the grey walls stand in dreamless silence—stone steps worn away by the feet of countless students. What a laboratory of knowledge!



We pose for you; a college quintet pays tribute to Budda; spring-time on the campus, Colonel and Buss "Smilin' Thru"; retreat to or from? Open wide the doors, the windows are locked. The second Christian Martyr—tolerant ears to the wailings of an editor; a jolly bunch of barbers; Southwestern's twins.

Along
western
Rowena
an eight
playing
there, s
fro; Tw
best; a l



Along with the story of Southwestern—Senator Reed's "Oasis"; Rowena and Sid breakfast before an eight o'clock; talk of games, or playing one, bargaining here and there, students sauntering to and fro; Twyla and Colonel smile their best; a lull in the ten o'clock rush.





Students sauntering slowly—or walking briskly to games or study—vines clinging to new walls—strength—knowledge—and power lieth herein.

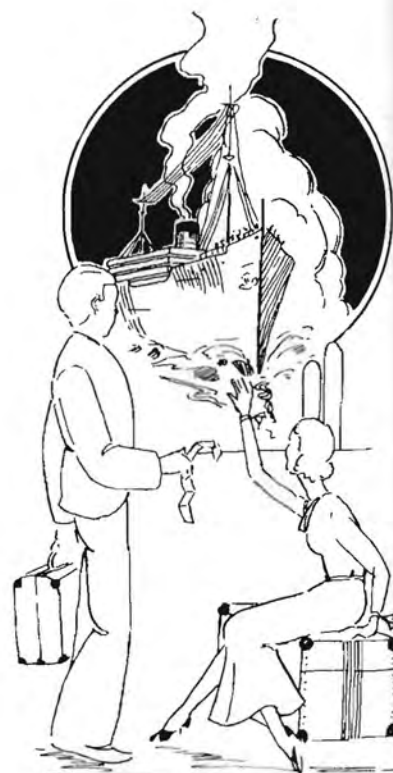
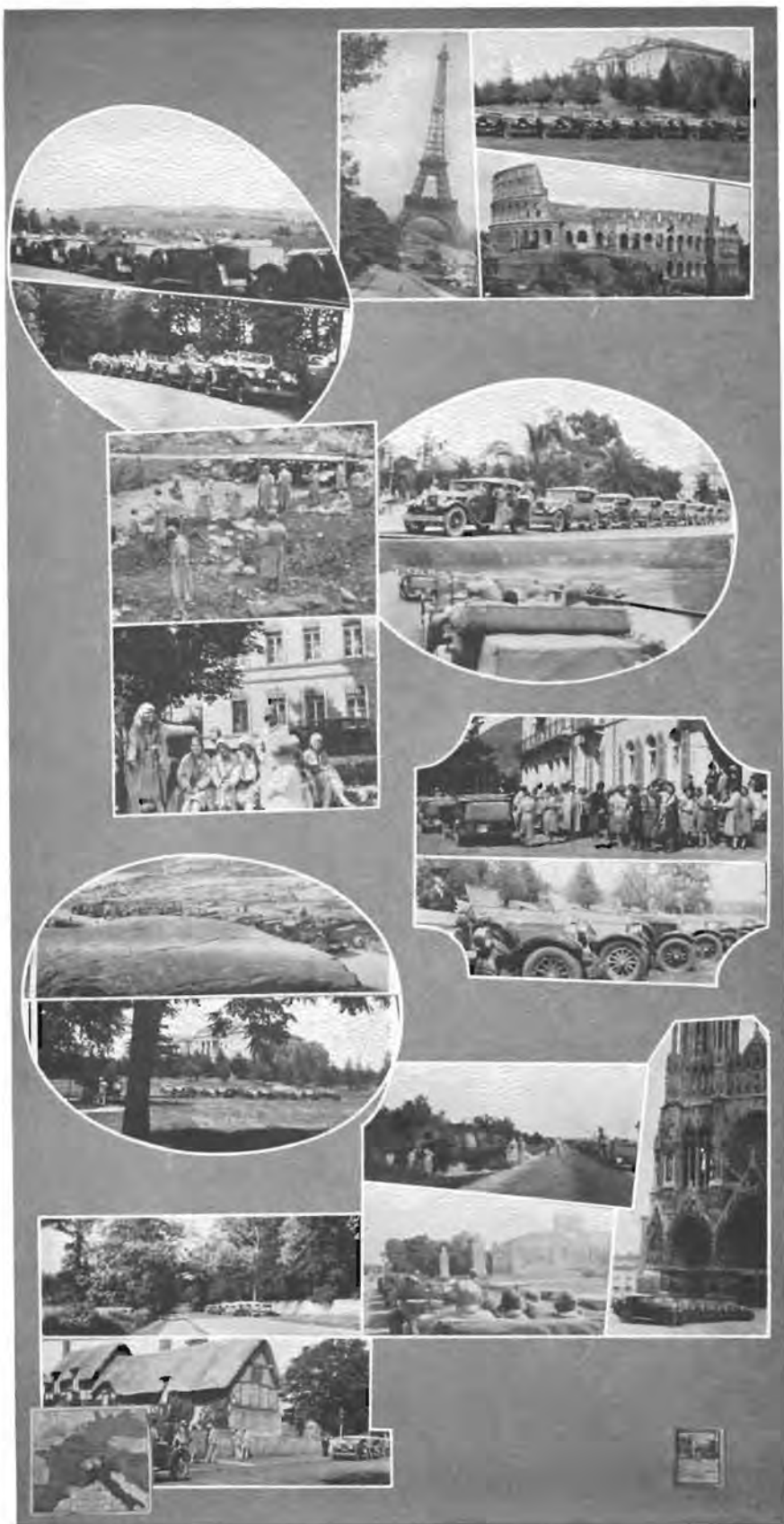


*Pep club
Buss and
a big "S-
basket ball
tonight"; E
pledges it
typical cro
Brown di
Southwest
from the h*



Pep clubs support the team; Buss and Fritz direct the chapel in a big "S-O-U"; the captain of basket ball stops to say, "We'll win tonight"; K. K.'s, girls' pep club, pledges its support, regardless; typical crowd at a game; Professor Brown directs the band in "On Southwestern"; the athletic field from the hill.





Motor pilgrimage of Europe, by the Southwestern Travel Club; Motor Caravan on S. C. Campus; Eiffel Tower, Paris; The Coliseum, Rome; Belleau Wood, from a distance; the beautiful Seine Valley; picnic lunch in the Northern Italian Alps; waiting for the motors; along Mediterranean coast at Nice; down the Rhine; Dani-oth's Grand Hotel, Andermatt; ready for a drive; summit of St. Gotthard Pass, Switzerland; "The Fleet of Eight"; German Tank near Verdun; English Memorial at the Marne; Rheims Cathedral; Guy's Cliff Mill; Anne Hathway's Cottage, Shakespeare country.



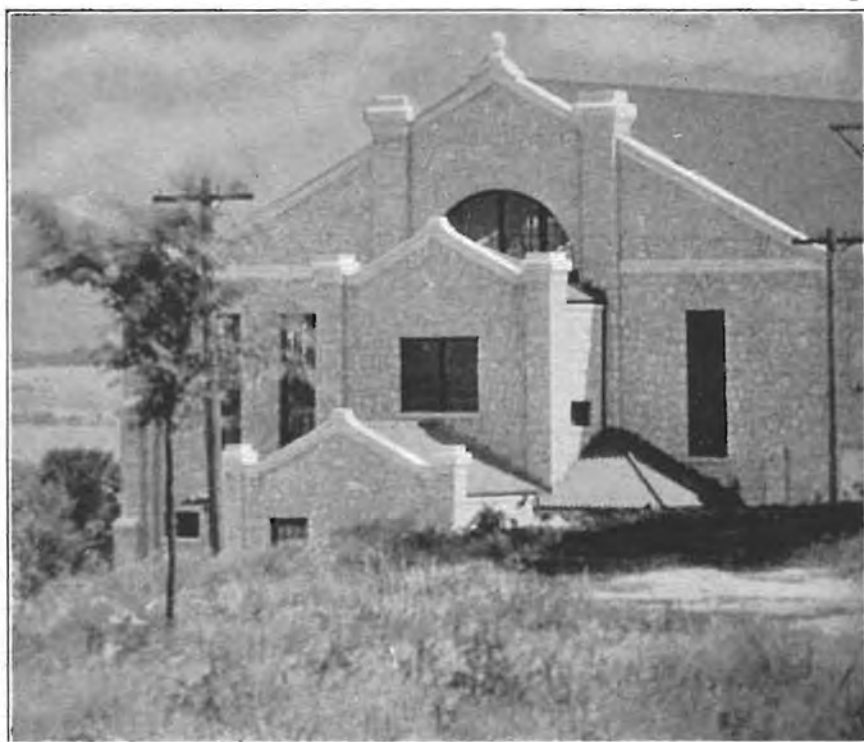
Appropriately situated at the foot of the pathway that winds through the trees to knowledge—happy youth abides here with gaiety—friendship—and industry.

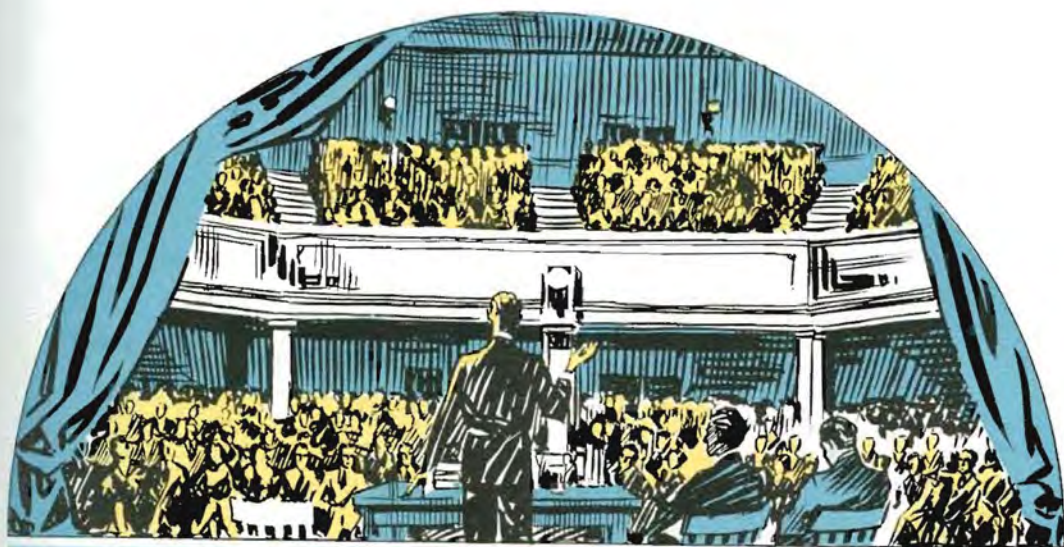


Spring festivities—Commencement week; the Queen of May takes her throne, followed by her attendants, who pay tribute at her court; Senior dignity parades its last; hillside vespers; the final gathering of four-year friends—commencement—not the end.



Golden warmth of sunbeams—shadows falling across a familiar winding road—the shining dome of patriarchial Richardson in the background.





COLLEGE





PRESIDENT EZRA T. FRANKLIN
A. B., Asbury College, 1903; B. Ped.,
Valparaiso University, 1905; A. M., Indi-
ana University, 1906; D. D., Union
College, 1929.



DR. R. L. GEORGE
*President, Board of Trustees; Acting Presi-
dent Southwestern College*
A. B., Southwestern College, 1899;
D. D., Southwestern College, 1927.



Liberal Arts Faculty



LEROY ALLEN

Dean of the College of Liberal Arts; Professor of Bible; National President of Pi Gamma Mu.

Ph. B., College of Wooster, 1906; Graduate Xenia Theological Seminary, 1914; A. M., University of Chicago, 1920; S. Sc. D., Oklahoma City University, 1930.



PENROSE ALBRIGHT

Professor of Physics and Chemistry.

B. S., Rensselaer Polytechnic Institute, 1922; M. S., University of Wisconsin, 1929.



MRS. H. HUGH ALTVATER

Instructor in German.

A. B., University of Michigan, 1920.

Liberal Arts Faculty

NATHE P. BAGBY

Instructor in English and Journalism; Director of News Bureau; Adviser of Collegian.

A. B., University of Texas, 1929; M. J., University of Texas, 1930.



J. THOMAS BAKER

Professor of Public Speaking; Coach of Oratory and Debate

B. L., Berea College, 1897; Ph. B., Berea College, 1898; Ph. M., Berea College, 1901; Ph. D., Wooster College, 1915.

ERSAL W. CAIN

Director of Physical Education for Men; Assistant Coach.

A. B., Southwestern College, 1927.



JAMES S. CHUBB

Professor of Philosophy and Bible.

A. B., Baker University, 1922; S. T. B., Boston University, 1925; S. T. M., Boston University, 1926; Ph. D., Northwestern University, 1930.

Liberal Arts Faculty



LILLIAN CLOUD

Director of Physical Education for Women.

A. B., Southwestern College, 1921; Certificate of Camprcraft, Kellogg School of Physical Education, 1923; Chicago Normal School of Education, 1924.

BENJAMIN COONFIELD
Professor of Biology

B. S., University of Arkansas, 1926; M. S., Kansas State Agricultural College, 1927; Ph. D., Harvard University, 1930.



EDWARD G. CORNELIUS

Professor of Economics and Business Administration

A. B., Maryville College, 1925; A. M., Vanderbilt University, 1926.



E. B. CRONEMEYER
Business Manager of the College.



Liberal Arts Faculty

ROBERT B. DUNLEVY
Professor of Geology.

B. L., University of Wisconsin, 1893; A. M., University of Wisconsin, 1910; Consulting Geologist for Oil Corporations in the United States, 1921, 1923, in Italy, 1924.



WILLIAM M. GOLDSMITH
*Professor of Biology; National President of Tri Beta;
Conductor of Omnibus College Tour.*

B. Ped., Missouri Normal College, 1909; A. B., Hillsdale College, 1913; A. M., Hillsdale College, 1916; Ph. D., Indiana University, 1920; Research Work, Johns Hopkins, 1920.

MRS. AMY GOLDSMITH
Professor of Home Economics.

A. B., University of Indiana, 1916.



ELEANOR HAYES
Professor of English.

A. B., Southwestern College, 1894; A. M., University of Kansas, 1917.

Liberal Arts Faculty



ADA M. HERR

Professor of Sociology; Sponsor of Southwestern League of Women Voters

A. B., Southwestern College, 1907; A. M., University of Michigan, 1909; on leave of absence, 1931.

EVA M. JACQUES

Instructor in Business Administration

B. S., Kansas State Teachers College of Emporia, 1923.



DAVID L. MACFARLANE

Professor of History and Political Science; President of Inter-Society Council

A. B., Northwestern University, 1916; S. T. B., Garrett Biblical Institute, 1917; University of Edinburgh, 1928-1929.



EMERY MCNEAL

Student Secretary

A. B., Southwestern College, 1922.



Liberal Arts Faculty

T. REESE MARSH
Professor of English

A. B., Johns Hopkins University, 1924.



MRS. T. REESE MARSH
Instructor in Sociology

A. B., Goucher College, 1926; A. M., Hartford
School of Religious Education, 1927.



WILLIAM L. MARTIN
Coach of Basket Ball

B. S., Kansas State Agricultural College, 1922.



WILLIAM M. MONYPENY
Director and Coach of Athletics

B. S., Kansas State Teachers College, Emporia,
1917.



Liberal Arts Faculty



WILLIAM A. MURPHY

Instructor in Economics and Business Administration

B. S., Kansas University, 1928; A. M., University of Kansas, 1930.



HOMER S. MYERS

Registrar; Professor of Mathematics and Astronomy

A. B., Baker, 1893; A. M., Chicago, 1913.



DOWNING P. O'HARA

Librarian

A. B., Southwestern College, 1925; M. A., University of Illinois, 1928.

Liberal Arts Faculty

LAWRENCE ONCLEY
Professor of Chemistry

A. B., Depauw University, 1907; M. S., University of Chicago, 1913.



WILLIAM J. POUNDSTONE
Professor of Education; Alumni Secretary

A. B., Southwestern College, 1910; A. M., University of Kansas, 1925.

WEBSTER P. REESE
Professor of Education; Dean of Summer School

A. B., Kansas State Teachers College, Emporia, 1912; B. S. in Education, University of Missouri, 1917; M. S. in Education, University of Kansas, 1919.





Liberal Arts Faculty

DOROTHY BLACKMAR TAYLOR
Professor of Romance Languages

A. B., University of Kansas, 1924; A. M., Columbia University, 1926; University of Paris (the Sorbonne), 1927-1928.



HENRY W. TAYLOR
Associate Professor of Mathematics; Conductor of Taylor European Tour

A. B., College of Emporia, 1921; A. M., University of Kansas, 1922.



C. I. VINSONHALER
Dean of Men; Associate Professor of Latin and English

A. B., Highland College, 1911; A. M., University of Kansas, 1927.



CHALCEA WHITE
Dean of Women; Professor of Home Economics
A. B., Southwestern College, 1921; M. A., Columbia University, 1929.

Fine Arts Faculty



H. HUGH ALTVATER

Dean of the School of Fine Arts; Professor of Violin; Director of Violin Choir

A. B., University of Michigan, 1920; Mus. M., Southwestern College, 1925; Mus. M., University School of Music, Ann Arbor, Michigan, 1929; Pupil of G. Remy, Paris Conservatory.



FRANCES AMBROSE
Instructor in Piano

Southwestern College.



HOBART L. BARBOUR
Instructor in Violoncello

Cornell College and Southwestern College.

Fine Arts Faculty



CHARLES O. BROWN

Professor of Instrumental Music; Conductor of Band, Orchestra, and Drum Corps

Mus. B., Southwestern College, 1924; Army Band, Master's School, New York City.

MARIE BURDETTE
Instructor in Piano

Mus. B., Winfield College of Music, 1922; Piano with Isadore Philipp and Madame Dasset; Organ with Bach interpretation and improvisation with Marcel Dupre, Paris, France, 1927.



GRACE M. COMPTON
Instructor in Violin

Mus. B., Southwestern College, 1926; Conservatoire Americain, Fontainebleau, France, with G. Remy and M. Hewitt, 1928.



EDITH DIELMANN
Instructor in Expression and Dramatics

Graduate in Expression, Southwestern College; Pupil of Mme. Howatt, Chicago Musical College, 1928; B. O., Chicago Musical College, 1928.



Fine Arts Faculty

FERN DIELMANN
Instructor in Piano

Mus. B., Winfield College of Music, 1926; Pupil of Percy Grainger at Chicago Musical School, 1927-1928.



ACHILLE ADELGHEIM FIORAMONTI
Professor of Voice

Imperial Conservatory of Music, Moscow, Russia, under Masetti; under Borgi and Coppola of Milan, Italy; under Lomgardi of Naples, Italy; with Milan Grand Opera Co., as leading Tenor; Mus. B., Southwestern College, 1925.



ANNA KOUNNETZOFF FIORAMONTI
Professor of Voice

Imperial Conservatory of Music, Moscow, Russia, under Doubassoff; leading Dramatic Soprano with Milan Grand Opera for two years; leading Soprano of "La Scala" Theatre in Milan for one year.



HELEN GRAHAM
Professor of Expression and Dramatics

A. B., Southwestern College, 1919; Alberti School of Expression with Madame Alberti, 1921-1922; Northwestern University, 1929-1930.





Fine Arts Faculty

IDA CLAWSON HUNT

Professor of Public School Music

Mus. B., Baker University, 1921; Beethoven Conservatory, St. Louis.

HENRY H. LOUNDENBACH
Professor of Piano; Principal Preparatory School of Music

Graduate in Piano and Theory, Campbell University, 1902; Pupil of Mr. and Mrs. A. K. Virgil, New York, Madame Fannie Bloomfield-Zeisler, New York, and Arne Oldberg, Northwestern University.



CORA CONN MOORHEAD
Professor of Organ and Theory of Music

Graduate of Findlay College Conservatory, 1900; Graduate of Guilman Organ School, 1911; Pupil of Marcel Dupre in Musical Analysis and Organ; Mlle. Nadia Boulanger in Harmony, Paris, 1927.



Fine Arts Faculty

HADYN OWENS

*Professor of Voice; Director of A Cappella Choir,
Festival Chorus*

Mus. M., American Conservatory of Music, Chicago, 1929; Pupil of Isadore Philipp and Albert Wolff in Paris, Michael Rauchisen and Arthur Rosentein in Berlin.



GRACE SELLERS

Instructor in Piano

Mus. B., Southwestern College, 1927; Pupil of Oscar Thorsen and Madame Rive-King.

MERLE M. STEINBERG

Instructor in Piano

Graduate of Winfield College of Music, 1924;
Pupil of Charlotte Rose and Archibald Olmstead.



Administration, Assistants, and Matrons



MRS. EDNA BOWER, *Matron, Holland Hall*; MISS ESTHER BROWN, *Matron, Allison Hall*; MRS. MABEL CASBURN, *Matron, Smith Hall*; REED CAVITT, *Custodian, Building and Grounds*; MRS. EDNA COBB, *Matron, East Hall*; PRESLEY COWAN, *Secretary to President*

R. A. DADISMAN, *Field Secretary*; LOIS HILL, *Secretary to Registrar*; DOROTHY McMANIS, *Assistant Librarian*; FRANCES PENNINGTON, *Secretary to Dean of Liberal Arts*; J. L. PRICE, *Custodian, Stewart Gymnasium*; MRS. ALMA REESE, *Secretary Teachers' Placement Bureau*

FRANCES THOMAS, *Secretary to Endowment Secretary*; W. T. WARD, *Endowment Secretary*; RUTH ZEIGLER, *Assistant, Business Office*; EMIL HOLGERSON, *Assistant, Business Office*; RUTH MARVEL, *Secretary to Dean of Fine Arts*; IRLINE MOORE, *Mimeographer*; IDA SELLERS, *Secretary, News Bureau*.



CLASSES



Seniors

- ALBAN, EUGENE *Wichita*
Geology
Alpha Beta.
- AMBROSE, FRANCES *El Dorado*
Piano
- BERG, MAURINE *St. John*
Piano
Belles Lettres; A Cappella Choir,
'27-'29-'30; Festival Chorus; Stu-
dent Council, '27.
- BOLACK, GLADYS *Burden*
Home Economics
Belles Lettres; Kappa Omicron
Phi; Pres. '30, Sec. '29; Gamma Omicron.
- BOWER, GLADICE *Laverne, Okla.*
Religious Education and English
English Club; W. A. A.; Y. W.
C. A.
- BROWN, BRYCE *Hutchinson*
Mathematics
Alpha Beta Alpha; Y. M. C. A.;
Intramural B. B.
- BUNCH, LEITHA *Winfield*
Chemistry
- BURGESS, LYMAN *Satanta*
Religious Education
Delphi; Oxford Fellowship; Y. M.
C. A.; Glee Club; Festival Chorus;
Tri Beta.
- BURGESS, RUBY *Satanta*
Biology
Tri Beta; Pi Gamma Mu; Sigma
Phi Pi; W. A. A.; Y. W. C. A.
- CALVERT, RUSSELL *Winfield*
Business Administration
Athens; Cheer Leader.
- COLE, RUBY *Winfield*
Home Economics
- CORRIE, MARGARET *Lewis*
Religious Education
Sigma Phi Pi; Y. W. C. A.; Gospel
Team.

Seniors

COTTOM, HAROLD *Winfield*
Religious Education
 Cosmopolitan Club, Pres. '30.

COWMAN, GOLDIE *Miltonvale*
Religious Education
 Y. W. C. A.; W. A. A.

CRANK, EDWIN *Winfield*
Geology
 Tennis, '28; Y. M. C. A.; Intramural B. B.

CRANSTON, ERLIS *Langdon*
Chemistry
 Intramural B. B.; Chemistry Assistant.

CRUSE, MILDRED *Arkansas City*
Violin
 Violin Choir.

CUNDIFF, ANNA MAE *St. John*
Home Economics
 Delta Kappa Chi; W. A. A.; Gamma Omicron.

DAVIS, KEITH *Hutchinson*
Mathematics
 Delphi; Math. Club; A Cappella Choir; Festival Chorus; Spanish Club; Order Mound.

DAVIS, MARGARET *Medicine Lodge*
English
 Delta Kappa Chi; English Club; Violin Choir; Orchestra; Y. W. C. A.

DETTET, DOROTHY *Nickerson*
English
 Band; Drum Corps; A Cappella Choir; Festival Chorus.

DIBBENS, ERMA *Winfield*
Voice

DRENNAN, WEST *Winfield*
Business Administration
 Delphi; Y. M. C. A.; Band; Festival Chorus; Student Council; Senior Class President.

DUDGEON, OPAL *Winfield*
English
 Belles Lettres; W. A. A.





Seniors

ESHELMAN, RUBY LEE *Sedgwick*
Public School Music

Beta Gamma; A Cappella Choir;
Festival Chorus.

FARRIS, CLEMMIE *Little Rock, Ark.*
English

Belles Lettres; Campus Players;
English Club; Rangers Club.

FAUSS, GRACE *Mt. Hope*
Home Economics

Sigma Phi Pi; Kappa Omicron Phi;
Gamma Omicron; W. A. A.; Builder-
ette.

FENG, P. Y. *Fukein, China*
Education
Cosmopolitan Club.

FELT, WILBUR *Wellington*
Business Administration
Alpha Beta Alpha.

FIGLEY, JACK *Navarre, Ohio*
Religious Education; Biology
A Cappella Choir; Tri Beta;
Rangers Club; Y. M. C. A., Pres., '30.

FOSSEY, CHARLES *Nickerson*
History
Pi Sigma; Bull Club; Basket Ball.

GANTZ, ELSIE *Nickerson*
Public School Music
Cosmopolitan Club; Y. W. C. A.

GARVER, ROGER *Winfield*
Business Administration

GILMER, ROBERT *Winfield*
Chemistry
Delphi; Orchestra; Band; Intra-
mural B. B.

GOODELL, ROY *Tecumseh*
English

GOODIER, LURA *Blackwell, Okla.*
Religious Education and Social Science
Delta Kappa Chi; Festival Cho-
rus; Gospel Team; Y. W. C. A.

Seniors

GOSCH, GERALDINE *Norwich*
English

Sigma Phi Pi; Gamma Omicron;
English Club; Y. W. C. A.

GREEN, EVERETT *Winfield*
Business Administration
Basket Ball.

GREGORY EDA *Burden*
Home Economics

Kappa Omicron Phi; Sigma Pi
Phi; Gamma Omicron.

GURTNER, JOHN *Winfield*
History and Religious Education

HAMMER, MILDRED *Wellington*
French

HANEY, RALPH *Winfield*
Business Administration

HARDESTY, RICHARD *Wakita, Okla.*
Bible

Oxford Fellowship; Y. W. C. A.

HARDEN, VERA *Liberal*
Mathematics
W. A. A.; Builderettes; Y. W. C. A.

IRVINE, LEOTA *Stafford*
Home Economics

Delta Kappa Chi; Gamma Omicron.

IRVINE, LEITHA *Stafford*
English
Delta Kappa Chi; English Club.

JOHNSON, BASIL *Winfield*
Religious Education

Rangers Club; Delphi; A Cappella
Choir.

KAWAMURA, KINICHI
Kiroshima City, Japan
English

Delphi; Pi Sig; English Club;
Cosmopolitan Club; Y. M. C. A.;
Intramural B. B.





Seniors

LAMMY, ROBERT *Wellington*
Chemistry

Delphi; Intramural B. B.; Student Council, '30; Intersociety Council; Track, '28-'29; Athletic Treas., '31.

LEWIS, MARGARET *Winfield*
Home Economics

Delta Kappa Chi; Kappa Omicron Phi.

MARRIOTT, ELSIE *Turon*
English and Dramatics

Belles Lettres, Pres., '31; English Club; Rangers Club; Quoins and Turtles Club; Collegian, '28; Student Council, '28.

MARTIN, DON *Winfield*
Music

Delphian; Band.

MARVEL, VICTOR *Winfield*
English

Delphi; English Club, Pres., '31; Collegian Editor; Junior President.

MAWDSLEY, ESTHER *Argonia*
History

Delta Kappa Chi; Y. W. C. A.

MCCAULEY, VERNON *Stuttgart, Ark.*
Bible

Delphi; Y. M. C. A.

McSPADDEN, MARTHA *Moline*
Home Economics

Kappa Omicron Phi; Sigma Pi Phi, Pres., '30; Y. W. C. A.; Gamma Omicron; League of Women Voters; Girls' Drum Corps; May Queen.

MELBERG, EVELYN *Partridge*
English

Beta Gamma, Pres., '30; English Club; Order of Mound; Pi Gamma Mu; Y. W. C. A. Cabinet.

MOODY, GEORGE *Winfield*
Voice

A Cappella; Band; Orchestra; Alpha Beta.

MOUNSEY, MYRA *Medicine Lodge*
Home Economics

MULL, MARY *Ashland*
Home Economics

Seniors

NEWLIN, AUDREY *Winfield*
Public School Music
Sigma Phi Pi; A Cappella; Festival Chorus.

NORTON, GEORGE *Hutchinson*
History
Delphi.

OKERBERG, WILFRED *Newton*
History
Pi Sigma Phi; Football; Basketball.

ONCLEY, PAUL *Winfield*
Music
Delphi; Violin Choir; Band; A Cappella.

PARISH, VIVIAN *Leoti*
Mathematics
Sigma Pi Phi; Y. W. C. A., Pres., '30-'31; A Cappella; Cosmopolitan Club; League of Women Voters.

PIERCE, ANNA JO *Winfield*
Home Economics
Gamma Omicron.

PETERSON, MORRIS *Winfield*
Business Administration

PINKS, JAMES *Winfield*
Mathematics
Athens; Y. M. C. A.

REED, BLANCHE *Lyons*
English
Belles Lettres, Sec., '30; English Club.

RONIGER, FRED *Burrton*
History
Delta Theta Pi; Cheer Leader.

SELLERS, IDA *Lyons*
English

Sigma Pi Phi, Pres., '31; English Club; News Bureau.

SIMPSON, LLOYD *Anthony*
Business Administration
Athens; Bull Club; Y. M. C. A.





Seniors

SMILEY, MRS. FLORENCE *Arkansas City*
English

SMILEY, CLIFFORD *Arkansas City*
English

SNYDER, RUTH *Winfield*
Voice

Belles Lettres; A Cappella; Festival Chorus; Big and Little Sister Ch., Y. W. C. A.; Cosmopolitan Club.

STROHL, ORVILLE *Winfield*
Sociology

Athens, Treas., '29-'30; Mound-builder, Bus. Mgr., '31; Class President, '29; Student Council, '29-'30; Executive Comm., '31; Ch. Social Comm., '31; Band, '28-'29; Gospel Team; Quoins and Turtles.

STUBER, ELEANORA *Winfield*
Home Economics

Belles Lettres, Vice-Pres., '31; Inter-Society Rep., '30; Drum Corps; Gamma Omicron.

SWARTZ, DANIEL *Winfield*
Mathematics

TAYLOR, BILL *Ozark, Mo.*
Business Administration
Athens.

THOMAS, FLORUS *Las Animas, Colo.*
English

Beta Gamma Epsilon; English Club; Intersociety Rep., '30.

THOMPSON, LA VON *Winfield*
Home Economics

Delta Kappa Chi; Gamma Omicron; Festival Chorus.

THOMSON, HAROLD *Hutchinson*
Mathematics

A Cappella; Band; Festival Chorus; Cosmopolitan Club; Student Council, '30-'31.

THOMSON, LEON *Hutchinson*
Philosophy; Journalism

Collegian Staff, '28-'31; Ass't Bus. Mgr., '29; Bus. Mgr., '31; Quoins and Turtles; Y. M. C. A. Cabinet, '31.

TIBBITTS, LUCILLE *Langdon*
English; History

Belles Lettres, Pres., '30; Campus Players, Pres., '30; Drum Corps; English Club; Moundbuilder Staff; Student Council.

Seniors

- TIHEN, SAM *Harper*
Chemistry
 Delta Theta Pi; Leneans, Pres., '30; Band; Orchestra; Grace Choir.
- WALTER, ELIZABETH *Kingman*
History
 Belles Lettres, Sec., '29-'30; Inter-society Council, Sec., '30; Y. W. C. A. Cabinet, '29-'31; Detroit Nat'l Convention, '30; Moundbuilder Staff.
- WATERS, RALPH *St. John*
Economics
 Delphi; A Cappella; Men's Glee Club; Band.
- WATROUS, ALLAN *Madison, Wis.*
Violin.
 Violin Choir.
- WATSON, EFFIE *Winfield*
English
 Delta Kappa Chi; English Club; Y. W. C. A.
- WHINERY, CHRISTINE *Oxford*
History; English
 Beta Gamma, Sec., '29; Student Council, '29-'30; English Club; Quoins and Turtles; Moundbuilder Asst. Editor, '29, Editor, '30-'31.
- WING, LENA *Marienthal*
English
 English Club; Builderettes; Book Club.
- WOOLARD, FRANCES *Barnsdall, Okla.*
Religious Education
 Cosmopolitan Club; Y. W. C. A.
- WRIGHT, WILL T. *Nardin, Okla.*
Economics
 Delphi; Pi Gamma Mu; Pi Kappa Delta; Debate; Oratory; Collegian Staff, '28-'29.
- WYCOFF, THELMA *Ogden, Utah*
English
 Sigma Pi Phi.
- YOUNG, PAUL B. *Englewood*
Mathematics
 Delta Theta Pi, Pres., '30; Math. Club; Y. M. C. A.
- ZEIGLER, CECIL *Hutchinson*
Religious Education
 Delphi; A Cappella; Oxford Fellowship; Cosmopolitan Club.





Juniors

- ADAMS, MARY *Oxford*
Biology
- ALBRITTEN, GERALDINE *Cunningham*
English; History
Sigma Pi Phi; English Club;
Y. W. C. A.
- ARCHER, ELIZABETH ANN *Wellington*
Public School Music
- ARMSTRONG, CLEO *Garden City*
Delta Kappa Chi.
- ATKINS, DOROTHY *Winfield*
Business Administration
Sigma Pi Phi; Band; Orchestra;
Y. W. C. A.
- BENNETT, LENNA VEE *Winfield*
Music
Violin Choir; Orchestra.
- BIGLER, LYDIA *Winfield*
Home Economics
Sigma Pi Phi; Gamma Omicron;
W. A. A.; Y. W. C. A.
- BOGER, EVA JEANNETTE *Winfield*
Piano
Belles Lettres.
- BOLES, WALTER E., JR. *Wilmore*
Business Administration
Ass't. Bus. Mgr., Collegian.
- BRENN, GARCEL *St. John*
Religious Education
Oxford Club; Y. M. C. A.
- BROWN, DORIS *Hutchinson*
Speech Arts
Beta Gamma; Y. W. C. A.
- BROWN, EVERETT *Winfield*
Chemistry
Athens; Violin Choir; Orchestra;
Band.

Juniors

BURGESS, PHYLLIS *Kiowa*
Mathematics

Sigma Pi Phi; Student Council;
Pi Kappa Delta; Debate; Oratory;
Y. W. C. A.

BUSSARD, JOE *Winfield*
English

Y. M. C. A.; Intramural B. B.

BUTLER, MADGE *Yates Center*
Education

Sigma Pi Phi; Y. W. C. A.

COCHRAN, BLAKE *Wilmont*
Public Speaking

Athens; Campus Players; Pi Kappa
Delta; Debate.

COFFEY, CECIL *Dexter*
Chemistry

Alpha Beta; Y. M. C. A.

CUDNEY, VERLE *Trousdale*
Piano

Beta Gamma; Band; Drum Corps.

DACE, DORIS *El Dorado*
English

English Club; Beta Gamma; Y. W.
C. A.

DAMETT, MARGARET *Oxford*
English; French

Pi Kappa Delta; English Club;
Y. W. C. A.

DAVIS, MARY *Partridge*
Business Administration

Sigma Pi Phi; Y. W. C. A.

DELLINGER, MILDRED *Kingman*
Sociology

Sigma Pi Phi; A Cappella; Build-
ettes; W. A. A.

DEN, AMY GIN PING *Shanghai, China*
Music

Delta Kappa Chi; Cosmopolitan
Club.

DOBSON, MARGARET *Medicine Lodge*
Piano

Violin Choir; Orchestra.





Juniors

DONALDSON, PAUL *Norwich*
Business Administration

Alpha Beta; Campus Players;
Ass't Bus. Mgr. Moundbuilder; Y. M.
C. A.

DRENNAN, MRS. ALICE *Winfield*
Home Economics

Sigma Pi Phi; Gamma Omicron.

DUNN, DARRELL *Abbyville*
History

Basket Ball; Intramural.

ELLIOTT, HAROLD *Plains*
History

Delphi.

FRENCH, ELLIS *Pretty Prairie*
Chemistry

Delphi; A Cappella Choir.

FINK, MARY *Norwich*
Mathematics

Builderettes; W. A. A.

GOSTING, BESSIE *Kildare, Okla.*
History

Y. W. C. A.

GRIFFITH, LESTER C. *Rantoul*
Music

Delphi; Orchestra; Band.

HAUSCHILDT, OSWALD *Ponca City, Okla.*
Music

A Cappella; Band; Pi Sig; Pres.,
Rooters Club; Football; Athens; Y. M.
C. A.

HIERHOLZER, ELMER *San Antonio, Tex.*
Bible

Oxford Club.

JENKIN, RUTH *Smith Center*
Public School Music

Violin Choir; Orchestra.

JEWELL, MARIAN *Burns*
Home Economics

Sigma Pi Phi; Gamma Omicron;
Y. W. C. A.

Juniors

JOHNSON, GENEVIEVE *Arkansas City*
Secretarial Science

JOHNSON, HAROLD *Topeka*
Religion
Athens.

KING, JOHN *Hutchinson*
Business Administration
Athens.

KRAFT, VIRGIL *Medicine Lodge*
English
Delphi; Band; Orchestra; Y. M.
C. A.; Student Council; Intersociety
Council.

KREHBIEL, DOROTHY *Bentley*
Public School Music
Sigma Pi Phi; A Cappella; Inter-
society Council.

LANG, HAROLD *Winfield*
Geology
Moundbuilder Staff.

MAUCK, TRUMAN *White Water*

MILLIKEN, INEZ *Altamont*
English
Sigma Pi Phi; A Cappella; English
Club.

MONCRIEF, FRANCES *Winfield*
English

Belles Lettres; Leneans; English
Club.

MONROE, HARRY *Hesston*
Sociology
Oxford Club.

MOORE, IRLENE *Pratt*
English

Beta Gamma; Ass't Editor Mound-
builder; Collegian Staff; Debate; Inter-
society Council; Pi Gamma Mu.

MURPHY, WALTER *Pretty Prairie*
Public School Music
A Cappella; Male Quartet; Elijah.





Juniors

NEAL, LAURA *Blackwell, Okla.*
Public School Music

Beta Gamma; A Cappella.

NEWELL, MYRTIS *Stafford*
Home Economics

Delta Kappa Chi; Gamma Omicron; Drum Corps; Y. W. C. A.

NEWLAND, ROY *Winfield*
Business Administration

Alpha Beta.

NICHOLSON, GAIL *Turon*
English

A Cappella; English Club; Belles Lettres.

PENCE, DON P. *Sterling*
Music

Delphi; Student President; Student Council; Cosmopolitan; A Cappella; Orchestra; Band; Pi Kappa Delta; Y. M. C. A.

RAINBOW, MARY *Nickerson*
Mathematics

Cosmopolitan Club; Y. W. C. A.

REED, DOROTHY *Garden City*
Bible; Spanish

A Cappella; English Club; Y. W. C. A.; Gospel Team.

RICHARDSON, LAWRENCE *Wichita*
Business Administration

Athens; Football; Baseball; Intramural B. B.

RICHARDSON, ROYCE *Wilmore*
Business Administration

Delta Theta Pi.

RIDINGS, HARVEY *Winfield*
Business Administration

Delta Theta Pi.

RIGGS, RALPH *Burns*
History

Delphi; A Cappella; Male Quartet.

ROBIESON, MILDRED *Oxford*
History

Juniors

RONIGER, FRED *Burrton*

History

Delta Theta Pi; Cheer Leader.

ROSS, NAOMI *Bushton*

Home Economics

Sigma Pi Phi; Gamma Omicron.

SAWYER, TRUTH *Greene, Maine*

English

Belles Lettres; English Club;
Drum Corps.

SEEVERS, WINONA *St. John*

Piano

Sigma Pi Phi.

SHEPARD, LEE *Pratt*

Business Administration

Alpha Beta; Basket Ball.

SMALLEY, GRACE *Jetmore*

English

Delta Kappa Chi; English Club.

SMITH, LLOYD *Dexter*

Education

Oxford Club; Band.

SMITH, JAMES *Cherokee, Okla.*

History

Campus Players.

SMITH, WILDA *Hayden, Colo.*

Home Economics

Belles Lettres; Gamma Omicron;
A Cappella.

STEINBERG, MERLE *Winfield*

Home Economics

STOELZING, LEWIS *Wellington*

Piano

Athens; Violin Choir.

TARBET, LOIS *Blackwell, Okla.*

History

Beta Gamma; A Cappella; Drum
Corps.



Juniors



TOEWS, ZEANNA *Cullison*
Secretarial Science
 Belles Lettres.

WEBB, QUINELLA *Sapulpa, Okla.*
 Sigma Pi Phi; Violin Choir.

WELSH, DAVID *Newton*
English
 Orchestra; Band.

WENTWORTH, IONA *Winfield*
English
 Delta Kappa Chi; Drum Corps;
 English Club.

WHITWAM, ROWENA *Wichita*
Public School Music
 A Cappella; Beta Gamma; Or-
 chestra; Rangers' Club.

WILLS, WILMA *Plains*
English; Public Speaking
 Delta Kappa Chi; Drum Corps;
 Y. W. C. A.

WINNER, DON *Winfield*
Business Administration
 Delphi.

YODER, EVELYN *Winfield*
Public School Music
 Beta Gamma; A Cappella.

Sophomores

AINSWORTH, ERMA
Argonia

ALLSBURY, REBA
Piedmont

ANDERSON, BYARD
Blackwell, Okla.

ARNOLD, EDNA
Winfield

ARNOLD, JOE T.
Winfield

ASH, JAMES RUSSELL
Winfield

BAKER, HAROLD
Winfield

BARNHART, CLIFFORD
Winfield

BOOTH, CHARLES
Sterling

BOYD, FERN
Winfield

BRADLEY, HELEN
Sedan

BRATTON, DOROTHY
Winfield

BREAZEALE, HOWARD
Ozark, Mo.

BROWN, RICHARD
Winfield

BRUCE, VIRGIL
Winfield

BUNCH, NIELS
Winfield

BURR, MAY
Leoti

BUSS, ERMA
Oxford

CAMERON, WOODROW
Arkansas City

CAMPBELL, HAROLD
Winfield

CARR, NADINA
Winfield





Sophomores

CLARK, GERTRUDE
Winfield

CLARK, HOMER
Winfield

CLOUD, LOIS
Kingman

COOPER, LUCILLE
Liberal

CORR., PAULINE
Winfield

CRAWFORD, LOREN B.
Winfield

CROUCH, HARVEY
Minnola

CROWLEY, BYRON
Burden

DAVIS, PAUL
Winfield

DAY, LAWRENCE
Pretty Prairie

DEEVER, HAROLD
Winfield

DIETRICK, EDWARD
Winfield

DIXON, MELVIN
Winfield

DONALDSON, ETHEL
Winfield

DUGAN, LAWRENCE
Winfield

DUSENBURY, KENNETH
Anthony

ELDER, MARION
Winfield

ELY, GEORGE C.
Ashland

FARRIS, BERLYN
Wichita

FINK, ALAN
Grenola

FLOOK, MILDRED
Canton

Sophomores

FOLKS, BERYL
Winfield

FOOSHEE, IRENE
Piedmont

FRENCH, HOMER
Pretty Prairie

GARRISON, RUTH
Mt. Hope

GARTON, EDNA
Macksville

GENTRY, DICK
Winfield

GERBOTH, CLAYTON
Bison

GIBSON, WILLIAM
Winfield

GILLOCK, RUTH
Deerfield

GILTNER, MARIAN
Winfield

GOSCH, BOYD
Norwich

GOSCH, GLADYS
Norwich

GUTHRIE, ELEANOR
Walton

GUTHRIE, GERSILDA
Jetmore

HAGAN, CARL
Turon

HAGANS, JOHN
Abilene

HAMILTON, HELEN
Winfield

HAMILTON, JOHN
Winfield

HAMILTON, ROBERT
Winfield

HENRY, HELEN
Hutchinson

HAMMOND, FRANCES
Great Bend





Sophomores

HESS, HARLAN
Caldwell

HILDINGER, CLAY
Jet, Okla.

HILFINGER, DEAN
Winfield

HITCH, MARJORIE
Guymon, Okla.

HOAG, HELEN
Wichita

HOLMES, ELSA
Coldwater

HUNTER, EVELYN
Winfield

INGLE, TWYLA
Shattuck, Okla.

JENNINGS, WANDA
Winfield

JOHNSON, RUTH
Winfield

KEALER, BEATRICE
Ellinwood

KELLEY, ROBERT
Winfield

KENDALL, RUTH
Kiowa

KENREICH, VIRGINIA
Winfield

KOPE, BLAIR
Winfield

LATTA, LESTER
Winfield

LAWRENCE, HARRY
Winfield

LEHMAN, CLAIRNELLE
Deer Creek, Okla.

LYDICK, EDWIN
Winfield

MAHER, DYKE
Winfield

MARSHALL, ARLONE
Leon

Sophomores

MARSHALL, NADA JO
Grenola

MARVEL, RUTH
Winfield

MATTHEWS, DONALD
Winfield

MATTHEWS, RUSSELL
Winfield

MAURER, MELBA
Winfield

MAWDSLEY, LOIS
Argonia

MAXWELL, WAYNE
Independence

MCALLISTER, RAYMOND
Blackwell, Okla.

MCGILL, FRANCES
Hoisington

McNICHOLAS, ADELAIDE
Bisbee, Ariz.

MILLER, FERN
Lyons

MITCHELL, ALBERTA
Pratt

MOGLE, RICHARD
Winfield

MONCRIEF, FRANK
Winfield

MOORMAN, MERTON
Nickerson

MORGAN, CHARLES
Driftwood, Okla.

MURPHY, VIRGINIA
Winfield

NEWSON, OWENA
Larned

NININGER, EDGAR
Hutchinson

NOELL, LILLIE
Syracuse

OPIE, HELEN
Great Bend





Sophomores

PARSONS, IRENE

Mountain View, Okla.

PHILLIPS, MARVENE

Winfield

PIERPOINT, VIRGINIA

Preston

PITTMAN, OLIVE

Minneola

PRATHER, MARY ALICE

Shattuck, Okla.

PRIEST, ARNOLD

Newton

RAGSDALE, PAUL

Langdon

REID, MILDRED

Medford, Okla.

REYNOLDS, HELEN

Winfield

RINKEL, ELMER

Haviland

ROBERTSON, VERNON

Hutchinson

ROGERS, CORNELIUS

Lake City

ROPP, DELLA

Altoona

ROSS, CLEMM

Blackwell, Okla.

SAWYER, BARBARA

Greene, Maine

SCHUERMANN, LORETTA

Jefferson, Okla.

SEYB, LAWRENCE

Pretty Prairie

SMITH, RCGENE

El Dorado

SNYDER, THELMA

Winfield

SPEAR, LUCILE

Wellington

STEEN, MAURITA

Maize

Sophomores

WHITSON, FAYE STEVENS

Pretty Prairie

SPOON, JAMES

Winfield

STROHL, EUGENE

Winfield

STROTHER, DONALD

Winfield

TAYLOR, EVON

Wellington

TONN, ELLEN

Haven

TRETBAR, MILDRED

Stafford

TSENG, SHOU TE

Hinghwa, Fukien, China

VANCE, JACK

Garden City

VINSONHALER, CHARLES

Winfield

VINSONHALER, EDITH

Winfield

WALTER, JEAN

Kingman

WARD, VIOLA

Moscow

WARD, VIOLET

Moscow

WENDT, EDYTHE

Sedan

WILCOX, EUGENE

Marion

WILSON, HAROLD

Winfield

WILSON, JAMES

Winfield

WOOLARD, ALLAN

Edna

YOUNG, TELFORD

Englewood

ZUTAVERN, NORA ANNE

Great Bend





Freshmen

ADAMS, LUCILLE, *Woodward, Okla.*

ADAMS, MARIE, *Woodward, Okla.*

ADAMS, MYRTLE, *Oxford*

ALFORD, ELIZABETH, *Holy, Colo.*

ALTHAUS, FLOYD, *Turon*

APPEL, MARIE, *Bushton*

ARMSTRONG, DORA, *El Dorado*

AUSTIN, MADELYNE, *St. John*

BAKER, MARGARET, *Syracuse*

BARLOW, MAXINE, *Winfield*

BARNHILL, BENJAMIN, *Altoona*

BECKNELL, CATHERINE
Oklahoma City, Okla.

BOLEY, ROBERT, *Leon*

BOLINGER, GEORGE, *Neodesha*

BROWN, CHARLES, JR., *Kiowa*

BUCKMAN, PEARL, *Winfield*

CHILDS, MARION, *Hoisington*

COFFEY, HARLEY, *Dexter*

CLIFT, CLAUDINE, *Winfield*

COLLINSON, ALBRIGHT, *Winfield*

COMPTON, EVA, *Winfield*

Freshmen

COOK, BERNITA, *Conway Springs*
 COOK, FERNANDO, *Winfield*
 CORP, KEITH, *Fairbury, Neb.*

COWMAN, ALBERTA, *Wichita*
 CRANSTON, GEORGE, *Burden*
 CRANSTON, LYLE, *Burden*

CRON, JOHN, *Mulvane*
 CUDNEY, ROY, *Trousdale*
 CURFMAN, EDNA, *Mulvane*

CUNNINGHAM, LAWRENCE, *Attica*
 DEEVER, HAZEL, *Winfield*
 DEVORE, DORIS, *Great Bend*

DILLARD, JACK, *Crane, Mo.*
 DONALDSON, ELMA, *Winfield*
 DUDITS, WILLIAM
New Brunswick, N. J.

DRAKE, ELEANOR, *Jelmore*
 DRENNAN, DEAN, *Winfield*
 DRYDEN, RUTH, *Winfield*

DUNGAN, MARJORIE, *Sedan*
 EDMISTON, WILMA, *Towanda*
 ELLIOT, LAWRENCE, *Conway Springs*





Freshmen

ELLIOTT, MARVIN, *Plains*

EVERETT, HALBERT, *Lamar, Colo.*

FINK, DOROTHY, *Norwich*

FISHER, MARLIN, *Wichita*

FLAHERTY, HAZEL, *Cheney*

FOULK, CARL, *Turon*

FOULK, EARL, *Turon*

FORBES, WHINEMIA, *Winfield*

FRANKUM, ZEPHA, *Wellington*

FULTON, DWIGHT, *Winfield*

GERBOTH, JUEL, *Bison*

GILMER, JOSEPHINE, *Winfield*

GILBERT, LUCILLE, *Winfield*

GLECKLER, DONALD, *Dodge City*

GLENN, LYLE, *Dodge City*

GORDON, LORETTA, *Winfield*

GRAMMER, MARY, *Junction City*

GRAY, CECIL, *St. John*

GREEN, KEITH, *Winfield*

GREYER, MERLE, *Winfield*

GUY, GEORGE, *Winfield*

Freshmen

HALL, PHYLLIS, *Atlanta*

HAMM, CHESTER, *Winfield*

HAMM, LEE, *Winfield*

HAMMER, HAROLD, *Kansas City, Mo.*

HAMMOND, RUSSELL, *Nickerson*

HANCOCK, TENNIE, *Leoti*

HARPER, MILLER, *Argonia*

HATTAN, GARLAND, *Mt. Hope*

HAUG, EDWARD, *Marlin, Tex.*

HENDERSON, WAYNE, *Oxford*

HEALZER, CATHERINE, *Great Bend*

HICKS, BLAKE, *Winfield*

HICKS, OPAL, *Winfield*

HILBISH, MAXINE, *Hennessey, Okla.*

HOLGERSON, EMIL, *Windom*

HULL, HELEN, *Great Bend*

HUMBURG, THELMA, *Bison*

HUSHAW, KEITH, *Scott City*

JOHNSON, HELEN, *Winfield*

JEFFERIES, ARCHIE, *Kiowa*

KELLEY, JOHN, *New Brunswick, N. J.*





Freshmen

KENNEDY, MERCEDES, *Wichita*

KIRKWOOD, ROGER, *Winfield*

KLAVER, WILLIAM, *Kingman*

KLIEWER, LEE, *Newton*

KRAFT, ROBERTA, *Medicine Lodge*

KREHBIEL, MILDRED, *Lakin*

KUNZMANN, ROWENA, *Winfield*

LANCASTER, GEORGE, *Winfield*

LANDON, MARGARET, *Holly, Colo.*

LITTLE, CLIFFORD, *El Dorado*

LOY, HAROLD, *Cullison*

MAURER, NORMAN, *Winfield*

MAZE, THEYMAN, *Caney*

McELHANEY, VENITA, *Augusta*

McMANIS, RICHARD, *Winfield*

MILLER, GERALD, *Grenola*

MILLER, VIOLET, *Lyons*

MILLS, LOUISE, *Pond Creek, Okla.*

MOCK, JEAN, *St. John*

MOGEL, OLIVE, *Barlesville, Okla.*

MORELAND, VIRGIL, *Mt. Hope*

Freshmen

NIEBAUM, CORA, *Caldwell*

NILES, MABEL, *Cherokee, Okla.*

NOEL, LEONARD, *Blackwell, Okla.*

NOSSAMAN, ADRIENNE, *Clearwater*

NUNEMACHER, EULA MAY, *Ashland*

NYE, MABEL, *Winfield*

OSSOWSKI, MARTIN, *Fairbury, Neb.*

PAKOZDI, GENE, *New York City*

PALMER, ALICE, *Ashland*

PARKER, BERNARD, *Fairbury, Neb.*

PARSONS, DONALD, *Winfield*

PETERSON, GERROLD, *Wellington*

PISHNEY, MARGUERITE, *Deer Creek, Okla.*

POLAND, CARRIE, *Cunningham*

POOL, JACK, *Winfield*

PORTER, GENE, *Anness*

RADCLIFF, ERNEST, *Cedar Vale*

RACE, HELEN, *Argonia*

RAYL, MARY ESTHER, *Kingman*

RENNER, PAUL, *Leon*

RICHARDSON, SYLVIA, *Winfield*





Freshmen

RIDINGS, ESTHER, *Winfield*
 ROACH, MARTHA JEAN, *Winfield*
 ROARK, BASIL, *Shallow Water*

ROSS, MYRTLE, *Winfield*
 ROUNDS, NEVA, *Winfield*
 ROYER, LESLIE, *Valley Falls*

SANDS, FORREST, *Winfield*
 SCHAPER, FLORENCE, *Mulvane*
 SCHNACKENBERG, FERN
Jefferson, Okla.

SCANLAND, JUANITA, *Haven*
 SEEVERS, ELOISE, *St. John*
 MORRIS, SETTE, *Belpre*

SEYMOUR, MANFORD, *Keyer, Okla.*
 SHALER, CATHERINE, *St. John*
 SHARP, WILLA MAE, *Winfield*

SHELHAMER, ELMER, *Winfield*
 SHIRE, JAMES DEWITT, *Ness City*
 SMALLEY, RUTH, *Jetmore*

SMITH, ADOLPHUS, *Winfield*
 SMITH, BOYD, *Winfield*
 SMITH, RUSSELL, *Burden*

Freshmen

SPEAR, REGINA, *Wellington*

SPESSARD, LLOYD, *Patridge*

STANLEY, PAULINE, *Cunningham*

STUBBS, VIRGINIA, *Burden*

STURM, MAX, *Winfield*

SULLIVAN, ALBERT, *Winfield*

SWANSON, MARGUERITE, *Chase*

SWARTZ, JANE, *Winfield*

SWENSON, LAWRENCE, *Winfield*

TATON, JOHN, *Winfield*

THOMAS, EVAN, *Lamar, Colo.*

THOMAS, LUCILLE, *Burns*

TORRANCE, RUTH, *Norwich*

TORRANCE, IONE, *Norwich*

VAUGHN, CHARLES, *Winfield*

VERBECK, HAZEL, *Turon*

VLOEDMAN, CLARA, *Woodward, Okla.*

WADE, WAYNE, *Winfield*

WARBURTON, PAUL, *Winfield*

WEAVER, MARJORIE, *Mullinville*

WIEMEYER, ESTHER, *Winfield*





Freshmen

WILKOWSKE, MILDRED, *Larned*

WILLIS EDNA PEARL, *Leoti*

WILSON, DEANE, *Halstead*

WILSON, ROGENE, *Wichita*

WOOD, MARGARET, *St. John*

WOOLARD, HAROLD, *Barnsdall, Okla.*

WOODDELL, BERNICE, *Winfield*

ZEIGLER, MARGARET, *Winfield*

ZIRKLE, MERRITT, *Winfield*

ZUTAVERN, ALICE, *Great Bend*

Second Semester Students

ZIMMERMAN, BEULAH, *Lamont, Okla.*
Senior

ESHBAUGH, CURTIS, *Fall River*

DAYTON, MARY, *Haviland*

DIAL, J. R., *Madill, Okla.*

HOLGERSON, BLANCHE, *Windom*

MEADE, MAUD, *Dexter*

PARKER, LENORA, *Trousdale*

PARKER, LELA, *Trousdale*

SIMMS, MATTIE MAE, *Winfield*

ZIMMER, ZELMA, *Dodge City*



ORGANIZATIONS



Order of the Mound



Top row—BERG, BUNCH, R. BURGESS, CRUSE, DAVIS
Bottom row—ONCLEY, PARISH, WALTER, WRIGHT, ZIMMERMAN

HONORABLE MENTION

GLADICE BOWER
EVELYN MELBERG
FLORENCE SMILEY

THE Order of the Mound, originated by the faculty of Southwestern College in 1917, was established as an honorary scholastic order. Those seniors who have maintained a high scholastic standing throughout their four years in college are elected to the organization at the end of the first semester.

Only those who have earned seventy-five hours of credit in Southwestern and maintained an average grade of a "B" are chosen. Students who have taken less than seventy-five hours of work in Southwestern and who have a "B" average are given honorable mention. At the present time a key, similar to the Phi Beta Kappa key, and a Purple and White ribbon are given with the honorary award. The award is made in an impressive ceremony at the final assembly of each year.

Order of the Mound is the only organization in existence at Southwestern which makes an honorary award on scholastic attainment alone. Election to the Order of the Mound is the highest scholastic achievement, and one of the most coveted by each Senior class of Southwestern.

Pi Gamma Mu



BIGLER, GOSTING, MOORE, KAWAMURA, ALLEN, VINSONHALER, ALLBRITTEN, HERR
BAKER, SMILEY, FIGLEY, CORNELIUS, POUNDSTONE, MACFARLANE, DAVIS, CHUBB
GOLDSMITH, O'HARA, MELBERG, MCMANIS, WHITE, WALTER, PARISH, BOWER

SOUTHWESTERN is the birthplace of Pi Gamma Mu. This National Science Honor Society originated here in 1924 when Dean Leroy Allen, then professor of economics, called a few of his economics majors together in room 23, and each contributed twenty-five cents to start the movement. The Society has since grown to a great national organization with one hundred and twenty chapters and nearly thirteen thousand members. Dean Allen is still national president and editor of the official organ of the Society, a quarterly magazine called *Social Science*, published at Southwestern.



DEAN ALLEN
Founder

The aim of Pi Gamma Mu is to promote interest in the scientific study of all social problems, first in the minds of young men and women in colleges and universities and then through them in the mind of the public at large. The Society tries to cultivate the cooperation of all of the social sciences that must contribute to the solution of social problems, such as sociology, economics, business administration, law, political science, history, philosophy, psychology, education, religion, ethics, geography, biology, and anthropology.

Only juniors and seniors of the highest character, personality, and scholarship are elected on the basis of their interest in scientific social study and their promise of future usefulness in this field.

Beta Beta Beta



MCGILL, LYDICK, R. BURGESS, V. WARD, L. BURGESS
ELY, FIGLEY, STROTHER, R. SMITH

BETA BETA BETA, National Biological Honorary Fraternity, was founded in 1922. At present there are chapters in fifteen states and one foreign country.

Beta Beta Beta was organized for the purpose of supplying for the biological sciences an honorary undergraduate fraternity that would be instrumental in promoting interest in this department of learning and in furthering the objectives of the science. It attempts to do this, in part, by reserving its membership for those who meet certain scholastic standards and have completed a required amount of work.

Aside from stimulating scholarship, Tri Beta has as additional objectives, the spread of biological information and the advancement of science by new discoveries. It emphasizes, therefore, a three-fold program, namely: Sound scholarship, dissemination of scientific knowledge, and promptness of biological research.

Dr. E. R. Coonfield, sponsor of the Delta Chapter at Southwestern College, is professor of biology at Southwestern.



JACK FIGLEY
President

Kappa Omicron Phi



BOLACK, DRENNAN, FAUSS, GREGORY
GOLDSMITH, McSPADDEN, MOUNSEY, PRATHER, WHITE

SINCE the organization of the Mu Chapter of Kappa Omicron Phi at Southwestern College in May, 1929, that organization has made a rapid growth both in local and national importance. To our chapter at Southwestern goes the honor of holding the first bi-annual national conclave in 1932. The Southwestern Chapter sent two delegates to the national conclave at Excelsior Springs this year.

An extensive program has been followed in Kappa Omicron Phi this year. Features of the year were: The Spring Banquet, the Mother Day Program, and the observance of Local Founder's Day. A number of projects were also carried out by the members. Social life in Kappa Omicron Phi was kept alive and interesting by a round of parties enjoyed throughout the year.

The purpose of Kappa Omicron Phi is to promote the best interests of Home Economics in four-year colleges. We realize the world needs women who have attained an intellectual, spiritual, ethical and aesthetic poise. Its members are selected on a basis of scholarship, initiative, leadership, and personality. They must also rank in the upper fifth in scholarship, and be majors in the Home Economics Department. The members are required to take a national examination each year as long as they remain active.

The Mu Chapter of Kappa Omicron Phi was organized at Southwestern with seven charter members. That number has now increased to nine. There are at the present time 12 chapters of Kappa Omicron Phi in the United States.



GLADYS BOLACK
President

Gamma Omicron



ARNOLD, BIGLER, BOLACK, BOYD, BRADLEY, CUNDIFF, DRENNAN, FAUSS, GOLDSMITH, GOSCH GREGORY, GUTHRIE, IRVINE, JEWELL, KENRICH, LEWIS, MARSHALL, McSPADDEN, MOUNSEY MULL, NEWELL, PIERCE, PRATHER, ROSS, SMITH, STEINBERG, STUBER, TOMPSON, WHITE

GAMMA OMICRON has taken for the theme of its bi-weekly meetings "Shopping," and has worked this idea into all of its programs and its projects for this year. "Shopping in Europe," "Shopping in New York City," "Shopping for Pictures," "Wholesale Shopping," "Shopping for Pottery," have been some of its featured programs.

Gamma Omicron is an honorary organization for Home Economics majors who are sophomores, juniors, and seniors, and whose grades meet the requirements which make them eligible for membership. Gamma Omicron was organized at Southwestern in October, 1921.

The two phases of the club work are symbolized by the jeweled tea-kettle and thimble which are worn by the members of the organization.

Mrs. Fioramonti was taken into honorary membership this year. The other honorary members are: Mrs. Albert Kirk, Mrs. Ezra T. Franklin, and Miss Grace Raymond.

A new custom was started in Gamma Omicron this year, in that all of the honorary members have addressed the organization.

Gamma Omicron has seen a successful year under the leadership of Miss White and Mrs. Goldsmith, sponsors, and Grace Fauss and Margaret Lewis, presidents.



MARGARET LEWIS
President

Pi Sigma Phi



GLENN, HAM, CORP, GERBOTH, MATTHEWS, SWARTZ, RONIGER, SEYB, FOSSEY, NINIGER
PARKER, ANDERSON, WOOLARD, OSSOWSKI, CROWLEY, GERBOTH, NOEL, RICHARDSON, GREEN
WILLIAMS, STROTHER, SHEPARD, HAUSCHILDT, DUSENBERRY, ELLIOTT, CAIN, MAUCK, McALLISTER
BRUCE, EVERETT, HILDINGER, KLAVER, WARD, KAWAMURA, ELY, OKERBERG, HAM

PI SIGMA PHI is an honorary fraternity of those Southwestern men who have won the right to wear the purple "S." The organization was established to promote the highest standards of friendship, sportsmanship, and scholarship among the lettermen of the college. It also serves as a nucleus for the Southwestern spirit and supports all school activities.



WILFRED OKERBERG
President

Each year the senior who is a letterman in a major sport and who has the highest scholastic ranking is awarded a gold key for his athletic and scholastic achievements. The annual banquet of the club, which is held each spring, is attended by both present and past members of the organization and is the biggest social function of the year.

Each member of Pi Sigma Phi is given a life membership at the time of his graduation from Southwestern. With this life membership goes a ticket which admits him to all intercollegiate games.

The "Pi Sigs" are also noted on the campus for their strenuous initiations. These take place yearly.

Professor MacFarlane is sponsor and Coach Monypeny is adviser to the club.

Pi Kappa Delta



ALLEN
HAGAN

BAKER
HUNTER

BURGESS
MOORE

CHUBB
PENCE

COCHRAN
WRIGHT

CORNELIUS

IN ORDER to stimulate the interest in inter-collegiate oratory, debate, and public speaking, the organization of Pi Kappa Delta was organized and is now the largest national honorary forensic society with 125 chapters and over 9,000 members.

In this great organization Southwestern has won a place of honor. In the January number of the "Forensic," national Pi Kappa Delta magazine, an entire section was devoted to the Southwestern Chapter and its excellent activities. The editor remarked that if conferring a degree he would make Professor Baker a Doctor of Tournaments.

Special awards are given and our Student Council awards Pi Kappa Delta Keys to each Senior member who has represented Southwestern two years in some phase of public speaking.

Pi Kappa Delta under the direction of Professor J. Thompson Baker sponsored two high school debate tournaments, one in the spring and one in the fall. The high school tournaments were unique in that they were the first in which high school debaters debated both sides of the question. The largest pre-season debate tournament to be held in the United States was held in the fall under the direction of Professor Baker.

Pi Kappa Delta is to its members the greatest organization on the hill.



PROFESSOR BAKER
Sponsor

Cosmopolitan Club



Top row McNICHOLAS, KAWAMURA, WOOLARD, HANCOCK, COTTOM, THOMSON, GANTZ
Middle row TSENG, JOHNSON, FENG, SNYDER, NOELL, ARMSTRONG, DEN
Bottom row—NORTON, PARISH, BROWN, WARD, ZEIGLER, RAINBOW

THE Cosmopolitan Club was organized in the fall of 1927, by Miss Lucy Gray Wright, and is at present one of the outstanding organizations on the hill. Southwestern is one of the four schools in the state having such an organization.



HAROLD COTTOM
President

The aim of the club is to foster international good will and inter-racial understanding on the campus. Its membership is made up of all foreign, negro and Indian students on the campus, with an equal number of other students. At present the membership is twenty-six. The local club is represented by seven graduate members in United States, India, China, and Japan.

Much of the success of the club this year has been due to the work of Harold Cottom, president, and Harold Thomson, vice-president. Much credit is given to Henry W. Taylor, sponsor of the club, for his excellent work the last several years.

Oxford Fellowship



Top row—KLEIWER, MCCAULEY, HAUG, STROHL, HAGANS
Middle row—RINKLE, BURGESS, BRENN, GURTNER, FARRIS, HARDESTY
Bottom row—FIGLEY, ZEIGLER, MONROE, HEIRHOLZER, ASH

SOUTHWESTERN has a number of men that are interested in the Christian ministry. Some of them are working in churches around Winfield as student pastors. They are serving their apprenticeship, so to speak, in the business of being a good pastor.

Of course the College does not offer a course in pastoral work as that is taken care of by the graduate schools. The Oxford Fellowship offers excellent opportunities for the student pastor and men that expect, some day, to hold a charge.

Guest speakers are heard quite often, giving helpful instruction, as well as the numerous lectures of Professor Chubb, one of Southwestern's own faculty members.

The Oxford Fellowship is a national organization. It is a club of instruction and social brotherhood. The organization at Southwestern is quite active and is so because it serves a real benefit to the lives of its members.



JOHN R. GURTNER
President

Y. W. C. A.



Top row—ALLBRITTEN, BOLACK, BOYD, BURGESS, GOSCH, HUNTER

Middle row—MELBERG, McSPADDEN, NOELL, OPIE

Bottom row—PARISH, SNYDER, TREFBAR, VINSONHALER, WALTER, WENTWORTH

THE Y. W. C. A. belongs to Southwestern women. Every girl in the school is proud of it. And they have a right to be. The reason Southwestern is so proud of its Y. W. is that it has so much to offer the women of the campus.

This organization offers a place where the problems that confront a college girl may be threshed out. In its Wednesday morning meetings there is an opportunity to express the religious instinct in drama, music, and communion with the Divine.



VIVIAN PARISH
President

This group of women seek to standardize the qualities all honorable women long for. They bring together all girls who are making an effort to serve.

The "Y. W." takes all of these things and combines them with a most pleasurable social life. That is why this group of girls is so popular on the campus. Leaders in society, leaders in friendship, leaders in faith, makes the Y. W. C. A. one of the outstanding organizations of the "Hill."

In cooperation with the other religious organizations on the campus, the Y. W. worked this year on Mexican settlement work, aided at the poor farm, carried on the annual Big and Little Sister Work, co-operated in giving the All-School Party, and sent an unusually large delegation to Estes Park. In fact, every type of social work that might interest college women was to be found in the program of the Y. W.

Young Men's Christian Association



L. SHEPARD, E. STROHL, FARRIS, CORP, MILLER, LOY, GLECKLER
FELT, L. BURGESS, E. HOLGERSON, BRUCE, V. KRAFT, O. STROHL, L. THOMSON

THIS year's Y. M. program was opened two days before registration by a "Freshman Camp" held at Camp Rising Wolf on the Walnut River. The following week there was a Y. M. hike. These events helped especially in the orientation of the freshmen.

With the fine cooperation of the Student Council, the Y. W. C. A., and the Inter-Society Council, the Y. M. sponsored a most successful all-school Hallowe'en Festival.

The Y's rendered a valuable service in bringing to the campus such outstanding leaders as Harry Holmes, world traveler; Clark Eichelberger, authority on the League of Nations; and Sherwood Eddy, world-wide youth leader. Religious Emphasis week just after Easter was made especially worth-while by the coming of "Dad Elliott."

The Y. M. Intramural Basket Ball Team was highly successful this year, winning the majority of the games. It represented a part of the Y's program in the interest of clean athletics.

Several cabinet members attended the State Conference in Wichita on March the sixth and seventh. Several cabinet members are planning to attend the National Y. Camp at Estes Park in June.

Bridging the gaps between the other events was the regular weekly meeting at 10:00 on Wednesday in the Alpha Beta Hall. The creation of a Y. M. orchestra in the spring added new life and interest to the meetings.



JACK FIGLEY
President

Student Council



Top row—PENCE, MARVEL, SELLERS, LAMMY, THOMSON, DRENNAN, O. STROHL, PARISH, BURGESS, DONALDSON
Middle row—ELLIOTT, KRAFT, COCHRAN, BOLES, E. STROHL, BOOTH, BRUCE, HUNTER, FRENCH, DEEVER
Bottom row—DUGAN, LATTI, TRETBAR, HENDERSON, ELLIOTT, KIRKWOOD, MILLER, D. WILSON, R. WILSON, KREHBIEL, MYERS, ALLEN

THE Southwestern Student Council, which is the nucleus for student government in Southwestern, was organized in order to promote a constructive school spirit; to further develop harmonious relations between faculty, students and student organizations; to share with faculty in the control of student organizations; and to provide a representative organization to take the initiative in all student enterprises.



DON PENCE
 President

The Student Council this year set out to prove herself a powerful and responsible governing body; to establish a high point of prestige in the student body and faculty; and to carry out a real constructive student social program.

Some of the most significant things accomplished were: The sponsoring of a big all-school banquet in honor of the football squad in the fall; and a similar one in the spring to the Violin and A Cappella choirs; the sending of a delegate to Atlanta, Ga., to attend the National Student Federation of America Conference; active participation in current politics; and promotion and guidance of proper school spirit; also an effort to put before the students each week a high type of student chapels, with ample opportunity for individual expression; and a steady voice in the control of the student activity budget.

Our motto this year has been the watchwords of the French Revolution—Liberty, Equality, Fraternity.

Inter-Society Council



Top row—WALTER, MARRIOTT, TIBBITTS, LATTI, DEEVER, GIBSON, COCHRAN, MOORE, MELBERG
Middle row—MARSHALL, THOMAS, ALBAN, NEWLAND, RAGSDALE, HUNTER, MCSPADDEN, KREHBIEL, SELLERS, WRIGHT
Bottom row—LAMMY, KRAFT, DAVIS, NEWSOM, IRVINE, HOLMES, TIHEN, YOUNG, MACFARLANE

IN FOSTERING friendship between the societies; in regulating rush and pledge activities; and in serving as a clearing house for society difficulties: the Inter-Society Council has realized the purpose for which it was organized.

With the addition of new societies to the society life of Southwestern, there was felt the need for an inter-society medium. Therefore, in 1923, patterning after the Inter-Fraternity Council of Northwestern University, a representative group of society members met and took the name of the Inter-Society Council. Since the time of its organization the Council has become a real factor in the life of Southwestern.

The Council not only urges co-operation between the societies but sponsors and encourages friendly inter-society competition by conducting each semester a group of Little Theatre Plays.

The membership of the Council is limited to eighteen members a semester, including the president and one society representative from each society, and the faculty advisor, and president of the Council, Professor MacFarlane.



PROFESSOR MACFARLANE
President

Campus Players



The Campus Players present "Friend Hannah"

MEMBERSHIP in Campus Players, the Honorary Dramatic Organization in Southwestern College, is one of the most prized attainments among student activities. It has been the purpose of this organization, founded in 1919-1920, to encourage a high type of dramatic production, and to build a critical appreciation of drama. The organization operates with no idea of profit, but strives with each production to add something of real value to stage equipment and costumes.



HELEN GRAHAM
Director

Under the direction of Miss Helen Graham, head of the expression department, the players always plan to offer a balanced dramatic program. Each year they produce one tragedy and one comedy, alternating modern and classic drama. Within the last few years such modern plays as, "The Admirable Crichton," "Sun-Up," "Skin-Game," and "A Bill of Divorcement" have been offered; of the classics, "Macbeth," and "Paolo and Francesca." Whatever the production, Campus Players feel that "The play is the thing," and each member, whether he is stage manager, a principal character, or an off-stage noise, does his part so that it contributes to the artistic effect of the show as a whole.

Leneans



Scene from St. Claudia

SEPTEMBER, 1930, marked the fourth birthday of the Lenean Dramatic Society. It was started at the suggestion of former President Kirk, who believed a permanent religious drama organization would be of great benefit to Southwestern. Since that time there has been the organization called the Leneans, attempting to further the work of the Christian Church through religious drama.

The first year they played *The Rich Young Man*, by Sara Kingsburg. The next year *The Rock*, by Mary Hamlin, was given. Last year they played *The Star of the East*, by Anna Jean Harmwell. This year *St. Claudia*, by Marshall Goold was presented.

Although the Lenean Society is a college organization, it is of self-supporting standing. It is financed entirely by free-will offerings given by various congregations they visit.

Miss Edith Deilmann is the director of this group, and has nurtured it four years until it has grown from a "brand new" organization to a healthy robust youngster recognized by outsiders as one of the major organizations of Southwestern.



EDITH DEILMANN
Director

The English Club



WATSON, NOSSAMAN, STANLEY, HUMBERG, KAWAMURA, FLOOK, KLEIWER, NICHOLSON, SAWYER, BAGBY, TIBBITTS, LATTI, RAGSDALE, SCANLAND, GOODIER, ALBRITTEN, MELBERG, MON-CRIEF, MARSHALL, MARSH, VINSONHALER, CLARK, R. SMALLEY, BOWER, GOSCH, G. SMALLEY

THE English Club was organized in the fall of 1929 for the purpose of developing and fostering an interest in literature and the literary arts among the students of the college. Prof. T. Reese Marsh, head of the English Department, was the organizer and sponsor of the club. The membership is primarily for English majors, but anyone in the college who is interested may join.



PROFESSOR MARSH
Sponsor

The programs given at the fortnightly meetings of the club are arranged in such a manner as to combine literary discussions and social functions. The topics of discussion are such as would ordinarily fall outside of the regular college curriculum. Art and music lectures, readings, and varied literary features form the basis of the programs.

During the past year the size of the club has more than doubled over that of the first year of its existence. More than fifty members were listed on the club roll. The Christmas banquet which was followed by a lecture on art by Miss Raymond of Winfield, was one of the outstanding social events of the English Club year.



SOCIETIES

Belles Lettres Honor



"WE DEDICATE ourselves to a greater Belles Lettres Society...whose present marks the passing day with ever increasing brilliance," reads a part of the oath to which every Belle has pledged herself.

True to this pledge, the past year has been bright with achievement. After the impetus of a successful rush season, the society swung through many activities, both literary and social.

The social high-light of the year was the annual Belles-Athens Day. Former members were back to enjoy the breakfast, luncheon, late afternoon pageant, and the play. The formal society banquet, the program and reception given by former Belles and Athenians, the Christmas and Valentine parties, and the surprise picnic given the society by Athens were other social events of note.

In the spring Belles Lettres awarded gold and silver "B's" to those members winning the society contests in Voice, Piano, Violin, Expression, Dramatics, and Debate.

Dramatics, forensics, music, women's athletics, scholastic attainments—in any department of the college you will find leaders who are Belles.

LUCILLE TIBBITTS
*President
First Semester*

ELSIE MARRIOTT
*President
Second Semester*

MAURINE BERG
Order Mound

CLEMMIE FARRIS
Campus Players

ELEANOR STUBER
Society Representative

ELIZABETH WALTER
Pi Gamma Mu



Beta Gamma Epsilon Honor



HOLDING before them Ruth as their ideal of charming womanhood, the Beta Gamma Society strives always to remain true to the ideals of loyalty, love, and friendship, and greatness of spirit that was hers.

The new members gained this year by Beta Gamma were outstanding in almost every phase of school activity. Following the brilliant social events of rush week, the society enjoyed a round of parties, picnics and luncheons, which terminated in the Annual Spring Banquet. One of the special features of the social season was the spread given to the graduating members of the society by the other members.

In co-operation with the Alpha Beta Alpha, Beta Gamma presented "R. U. R.", which was ranked among the successful plays of the year.

In dramatics, in debate and oratory, in scholarship, and in the various musical organizations, and various other school activities the Beta Gammas are to be found among the leaders.

Beta Gamma has dedicated herself to a broader social and cultural program both for the society itself, and for Southwestern as a whole.

EVELYN MELBERG
President
First Semester

IRLENE MOORE
President
Second Semester

LUCILLE COOPER
Society Representative

MADELYNE AUSTIN
Freshman Queen

CHRISTINE WHINERY
Editor Moundbuilder

FLORUS THOMAS
Society Representative



Delta Kappa Chi Honor



THE Delta Kappa Chi Society was organized in 1925. At this time the small group of students who were responsible for the founding, felt that the land of activity was crowded in the old organizations and they desired a new society. As a result of their brave and persistent efforts we have now a society well worthy of mention, as might be expected from an organization whose foundation is based on democracy, knowledge, and culture.

In order to hold the standards of our society, we have engaged in numerous activities and social functions. We have taken part in music, dramatics, debate, athletics, and our members have held various offices in the college organizations. Our weekly programs this year have been unusually entertaining. Besides these weekly programs and Little Theater plays, we also presented one three-act play.

Because we are a new society, we are engaged in making traditions, rather than following them; and we can make of our society what we will.

LEITHA IRVINE
President
First Semester

MARGARET DAVIS
President
Second Semester

BEULAH ZIMMERMAN
Order Mound

OWENA NEWSOM
Society Representative

WILMA WILLS
Society Representative

GRACE SMALLEY
Society Representative



Sigma Pi Phi Honor



STARTING with a successful rush season early in the fall and continuing with enthusiasm and interest throughout the year the members of Sigma Pi Phi feel that 1930-31 has not been in vain. It is the aim of Sigma to promote Friendship, Learning and Loyalty, and with these ideals ever in view her members have taken part in every activity of the school open to co-eds. Perhaps the most outstanding event of the year was the winning for the second consecutive time the Little Theater trophy with the play "Bargains in Cathay," which was presented by Sigma and Delphi. Members of Sigma point with pride to their sisters who this year won honors in the field of scholarship, of debate, of oratory, of music, of school popularity, of dramatics, and of Christian work.

Friendship, Learning, Loyalty,
Our Watchword ne'er shall fail,
Guide us through the years to come,
Sigma Pi Phi, Hail!

MARTHA McSPADDEN
President
First Semester

IDA SELLERS
President
Second Semester

DOROTHY KREHBIEL
Society Representative

PHYLLIS BURGESS
Debate

EVELYN HUNTER
Debate

VIVIAN PARISH
President, Y. W. C. A.



Alpha Beta Alpha Honor



KEEPING ever before them the slogan, "Alpha Beta Alpha—where the fraternal spirit is loyal to Southwestern" the members of the Alpha Beta Society have not only contributed a great deal to the building of a successful year for Southwestern, but have also had a brilliantly successful year in literary and social activities.

Beginning with a rush season which won for them pledges of unusually high type, and continuing throughout the school year, the enthusiasm displayed by members of the society has kept them among the leaders of the school.

Alpha Beta Alpha was represented in football with six Alpha Beta's. In basket ball four Alpha Beta's were given letters. Three men were so honored this year in track. Alpha Beta Alpha was represented in debate, oratory, dramatics, as well as on student publications.

Marked enthusiasm has been maintained in the society, and the majority of the thirty-five active members have fared forth every Thursday evening to the society hall. The social program which has been a round of activities, included several picnics, parties, the spring banquet, and the annual play, "R. U. R.", presented in collaboration with the Beta Gamma Society.

PAUL RAGSDALE
*President First and
Second Semester*

PAUL DONALDSON
Campus Player

HOMER CLARK
Society Representative

LOREN CRAWFORD
Violin Choir

WILBUR FELT
Society Representative

BRYCE BROWN
Society Representative



Athens Honor



FOR the Athenian Society, the year 1930-1931 was crowded with activities of both social and intellectual character. Out of the glamour and scrimmage of a successful rush week, Athens emerged with pledges of the type that every Athenian has a right to be proud.

In school activities Athens found a place; for its members represented Southwestern in football, basket ball, debate, oratory, band, A Cappella Choir, Violin Choir, Campus Players, and the Leneans.

The second semester opened with a new emphasis placed on the social program. It was recognized that one of the chief functions of the society was of a social nature. A Valentine party, Belles-Athens Day, and the spring banquet were high points in the society activities. Every effort was made to make the society fill an important place in the life of its members.

Athenians, believing in the traditions of the society and supporting the present program, look forward to a successful future. This, however, is secondary to their enthusiasm for a greater Southwestern.

WILLIAM GIBSON
President
First Semester

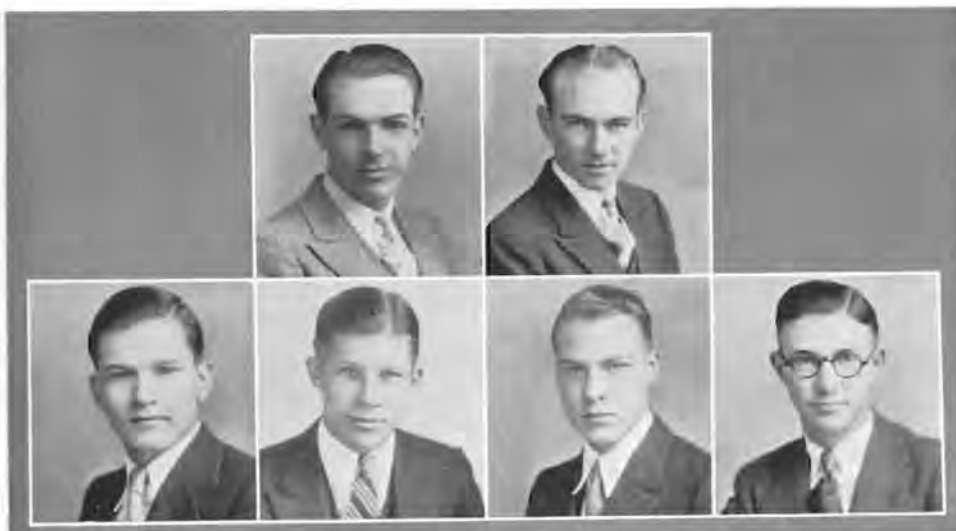
BLAKE COCHRAN
President
Second Semester

JAMES SPOON
Society Representative

LESTER LATTI
Society Representative

HAROLD DEEVER
Society Representative

ORVILLE STROHL
Business Manager,
Moundbuilder



Delphi Honor



HOLDING before it the aim to furnish training in parliamentary procedure, dramatics, and fine arts; to provide an adequate social program; to develop that true friendship which only comes through working together in a common cause, Delphi has this year contributed successfully to the upbuilding of its individual members and of Southwestern.

Led by the motto, KNOW THYSELF, Delphians have sought those qualities of character and leadership which have enabled them to take part in student activities. They have been prominent in student government, debate, oratory, Y. M. C. A., band, orchestra, A Cappella Choir, dramatics, and student publications.

Following a successful rush season which resulted in ample and excellent new material, the society has carried out a profitable and active program. Hikes, parties, the Little Theater contests, the annual play, the "Fakelty" program, and the spring banquet have been some of the features of the year other than the regular literary meetings.

ROBERT LAMMY
President
First Semester

WILLIAM WRIGHT
President
Second Semester

DON PENCE
President, Student Body

VICTOR MARVEL
Editor, Collegian

KINICHI KAWAMURA
Society Representative

GEORGE NORTON
Society Representative



Delta Theta Pi



DELTA THETA PI is proud of its youth. In the six years of its organization, years full of trials and problems which were met by a relatively small group of students, the society has never failed its watchword, "Progress." Unhampered by tradition, and with the realization that the future of the society depends, in a large measure, upon its record, Delta Theta Pi has continued to provide leaders among the more independent and progressive group of students.

The Delta societies have proved to be real contenders in all inter-society events. Their record in dramatics is enviable. In music, debate, oratory, journalism, and scholarship, Deltas are outstanding. This year Deltas were among the first in entering a very successful team in the intramural basket ball tournament.

The activities of the school year 1930-1931 have been centered around the ideal of making the literary society a vital force in the building of individual capacity and character.

The continued and loyal cooperation of Delta Kappa Chi has done much to enable the maintenance of high standards and ideals of the Delta society.

PAUL YOUNG
President
First Semester

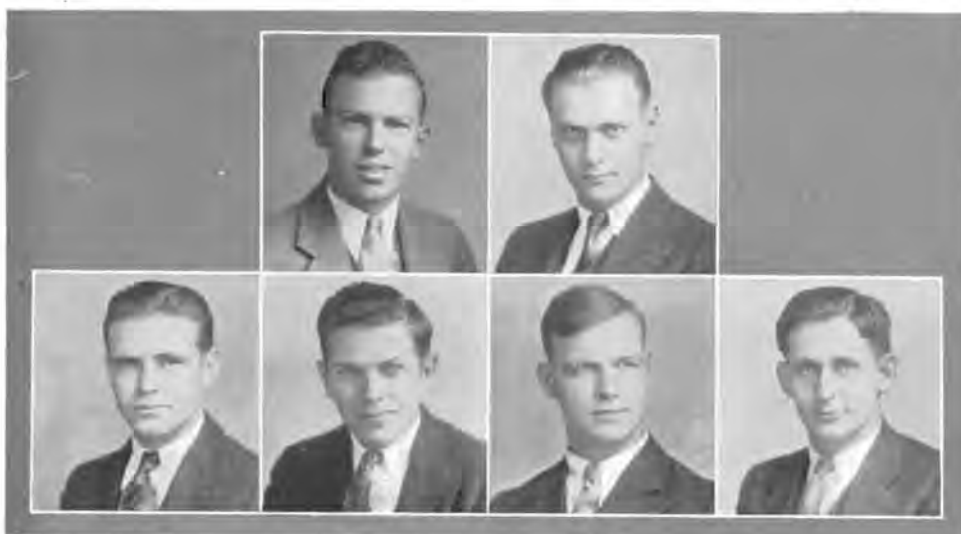
SAM TIHEN
President
Second Semester

BERYL FOLKS
Society Representative

FRED RONIGER
Cheer Leader

PAUL ONCLEY
Violin Choir

DAN SWARTZ
Society Representative



Belles Lettres



ARNOLD, ALFORD, BAKER, BARLOW, BERG
BOGER, BOLACK, BRATTON, CHILDS, COMPTON
CLIFT, DOBSON, DUDGEON, ELDER, FARRIS
FLAHERTY, FORBES, GILTNER, GILMER, GRAMMAR
HAMILTON, HEALZER, JENNINGS, MARRIOTT, MAURER

Belles Lettres



F. MILLER, V. MILLER, MONCRIEF, MOCK, NICHOLSON, OPIE
PHILLIPS, REYNOLDS, ROPP, B. SAWYER, T. SAWYER, SHALER
SMITH, SNYDER, STUBER, STUBBS, TOEWS, TONN
TRETBAR, VINSONHALER, E. WALTER, J. WALTER, A. ZUTAVERN, N. ZUTAVERN

Beta Gamma Epsilon



L. ADAMS, M. ADAMS, AUSTIN, BUSS, BROWN
COOPER, CUDNEY, DACE, DEVORE, ESHLEMAN
FLOOK, E. GUTHRIE, G. GUTHRIE, HAMMOND, HICKS
HITCH, HOAG, HUMBURG, INGLE, LEHMAN, A. MARSHALL

Beta Gamma Epsilon



N. MARSHALL, MELBERG, MOORE, MURPHY, NEAL
NOSSAMAN, PISHNY, PRATHER, REED, ROACH
ROSS, SCANLAND, R. SMITH, TAYLOR, TARBET
THOMAS, VLOEDMAN, WHITWAM, WHINERY, YODER

Delta Kappa Chi



AINSWORTH, ARMSTRONG, CARR, CLARK, CUNDIFF
DAVIS, DEN, HALL, L. IRVINE, L. IRVINE
LEWIS, MITCHELL, MOUNSEY, McNICHOLAS, NEWELL

Delta Kappa Chi



NEWSOM, PIERPONT, RIDINGS, G. SMALLEY
R. SMALLEY, I. TORRANCE, R. TORRANCE, SWARTZ
THOMAS, WATSON, WILKOWSKI, WENTWORTH
WILLS, ZIMMERMAN

Sigma Pi Phi



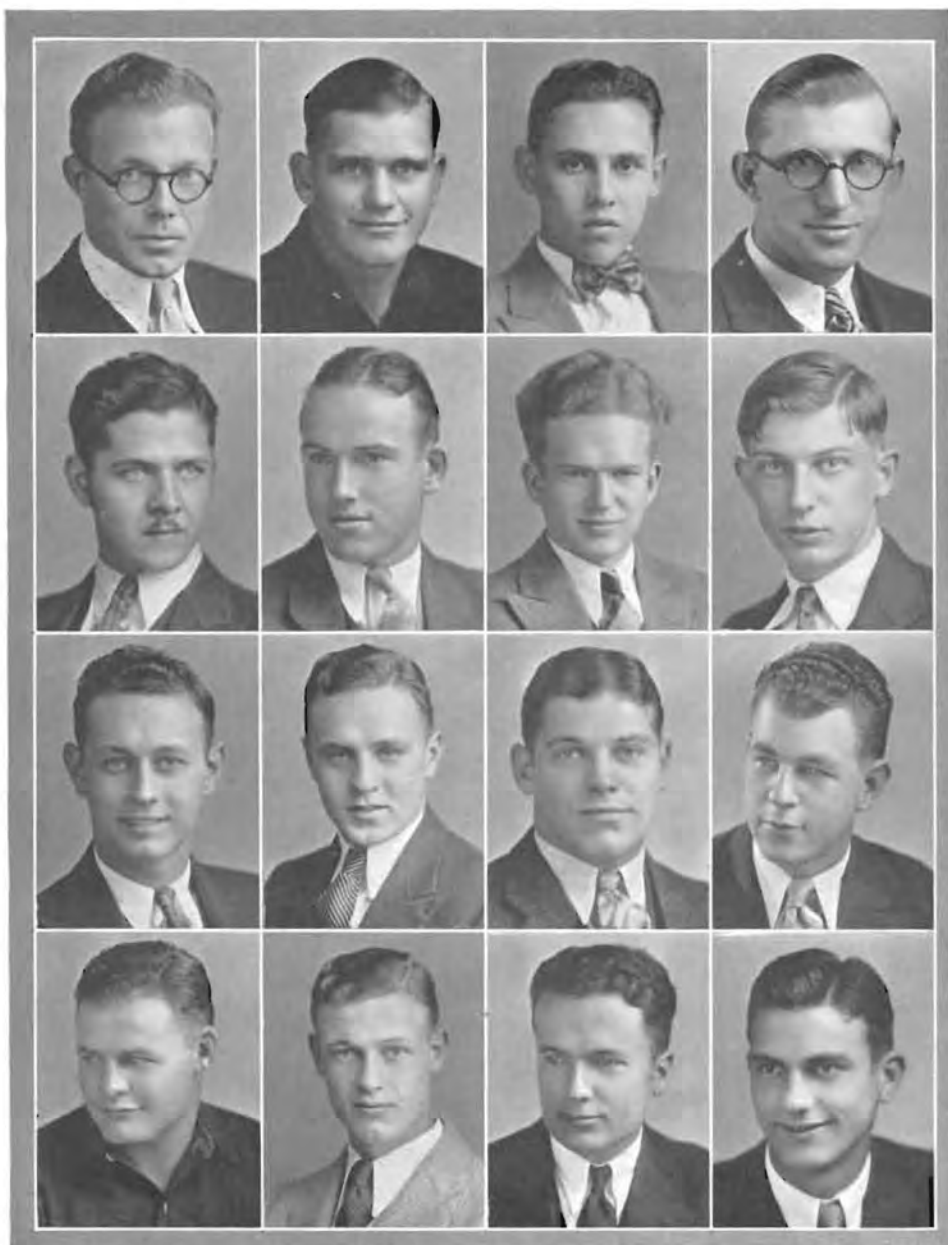
FOOSHEE, P. BURGESS, BUTLER, HUNTER, DUNGAN, HILBISH
ALLBRITTEN, A. COWMAN, KENREICH, BURR, HULL, GARRISON
GREGORY, DAVIS, ATKINS, D. KREHBIEL, BIGLER, KRAFT
HENRY, M. KREHBIEL, JEWELL, GILLOCK, DELLINGER, GILBERT
R. BURGESS, CURFMAN

Sigma Pi Phi



MARVEL, MILLIKEN, MILLS, MCGILL, MCSADDEN, NEWLIN
NIEBAUM, NILES, NOELL, NYE, PARISH, PARSONS
PITTMAN, POLAND, RAYL, ROSS, ROUNDS, E. SEEVERS, W. SEEVERS
SELLERS, SHARP, L. SPEAR, R. SPEAR, STANLEY, WEAVER
WEBB, WIEMEYER, WILLIS, WILSON, WOODDELL, WYCOFF

Alpha Beta Alpha



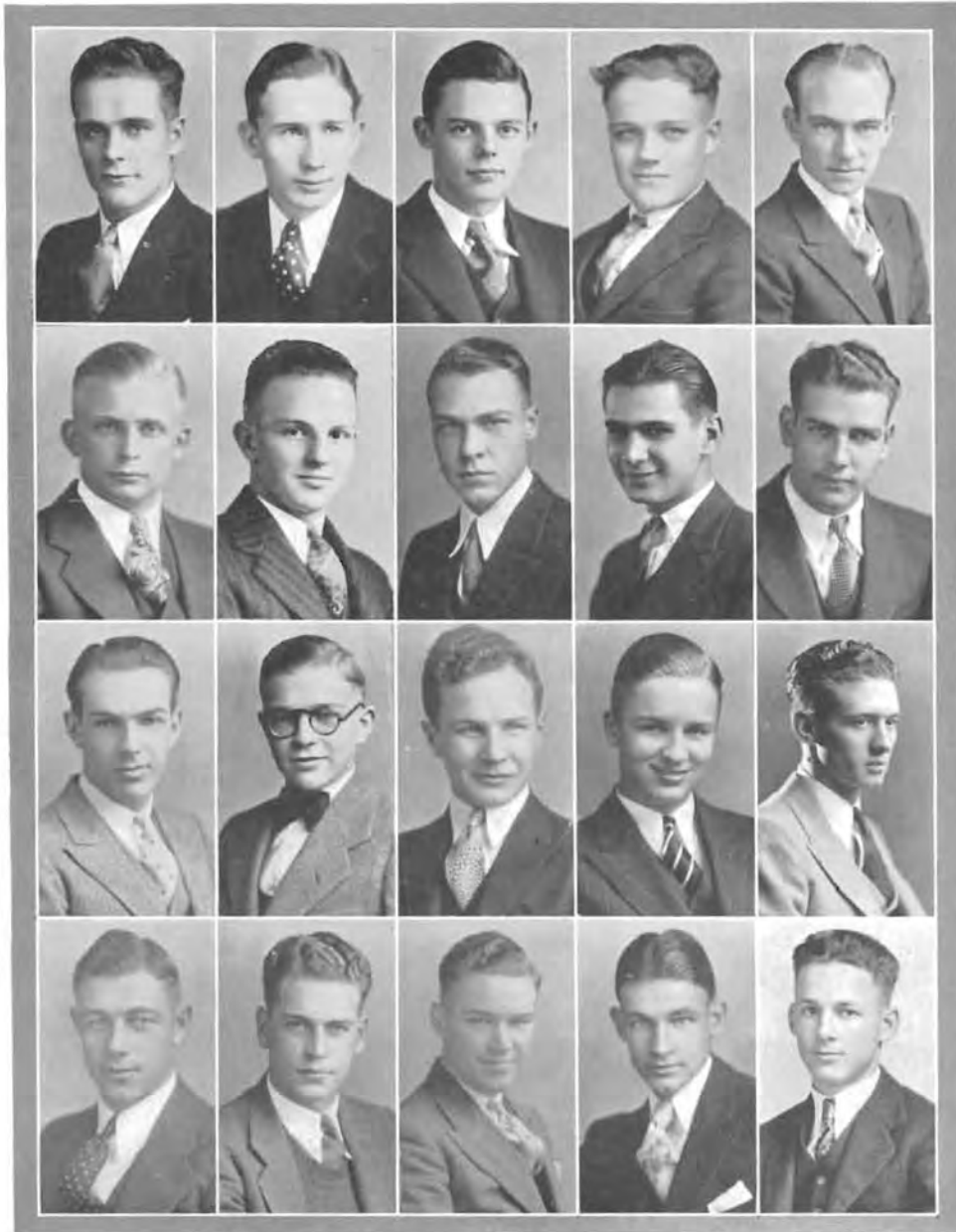
ALBAN, ANDERSON, BOLINGER, BROWN
CLARK, CORP, CRAWFORD, CRON
DICKSON, DONALDSON, DUSENBERRY, FELT
GOSCH, GREEN, HAGANS, L. HAMM

Alpha Beta Alpha



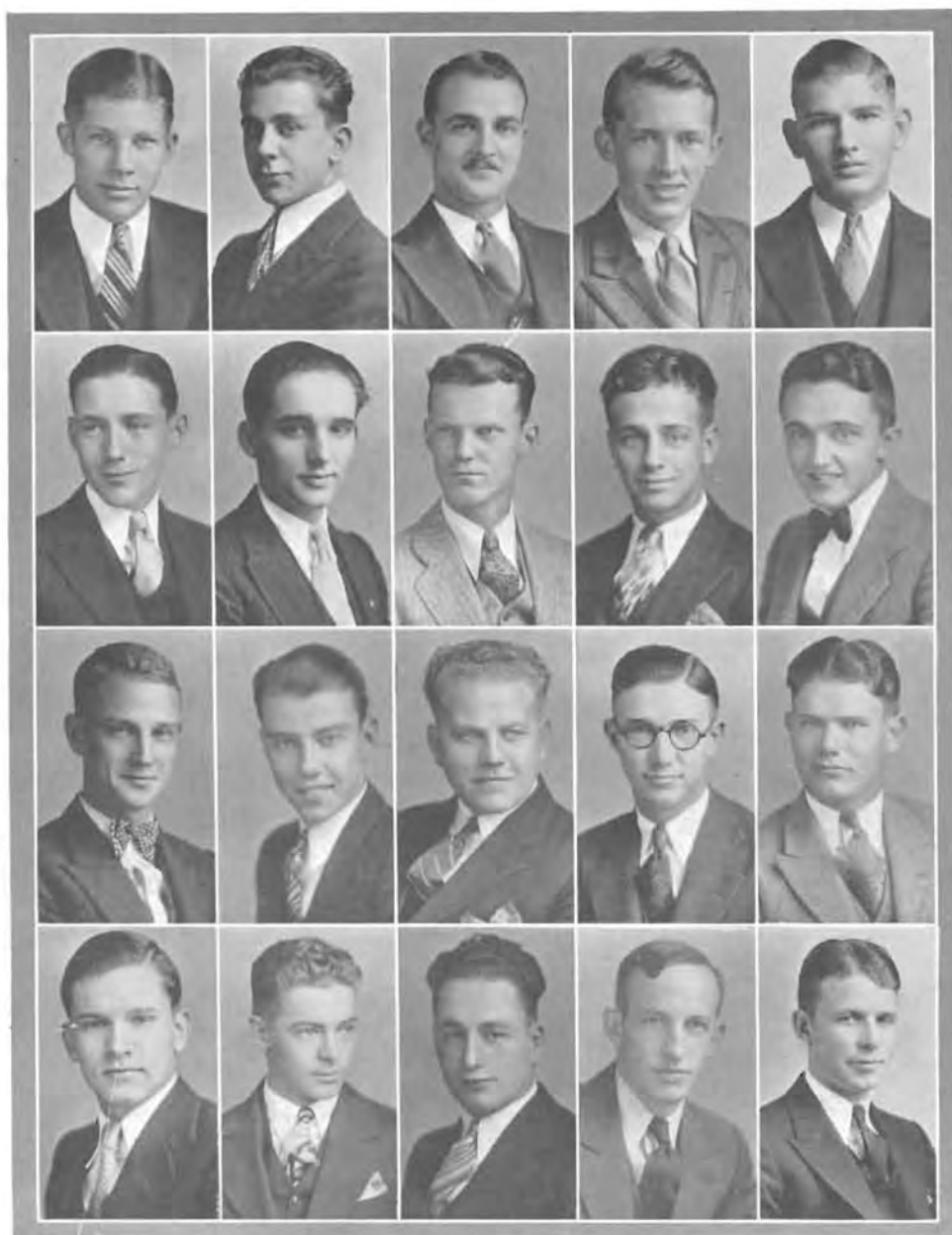
C. HAMM, HAMMER, KELLEY, LANCASTER
NEWLAND, NOEL, PARSONS, PETERSON
POOL, RAGSDALE, SEYMOUR, SHELFHAMER
SHEPARD, SHIRE, VAUGHN, ZIRKLE

Athens



BRUCE, BROWN, COLLINSON, COOK, COCHRAN
DAY, DIETRICK, DEEVER, FRAZIER, GRAY
GIBSON, GENTRY, HAMILTON, HILFINGER, HENDERSON
HUSHAW, JOHNSON, KING, KIRKWOOD, LYDICK

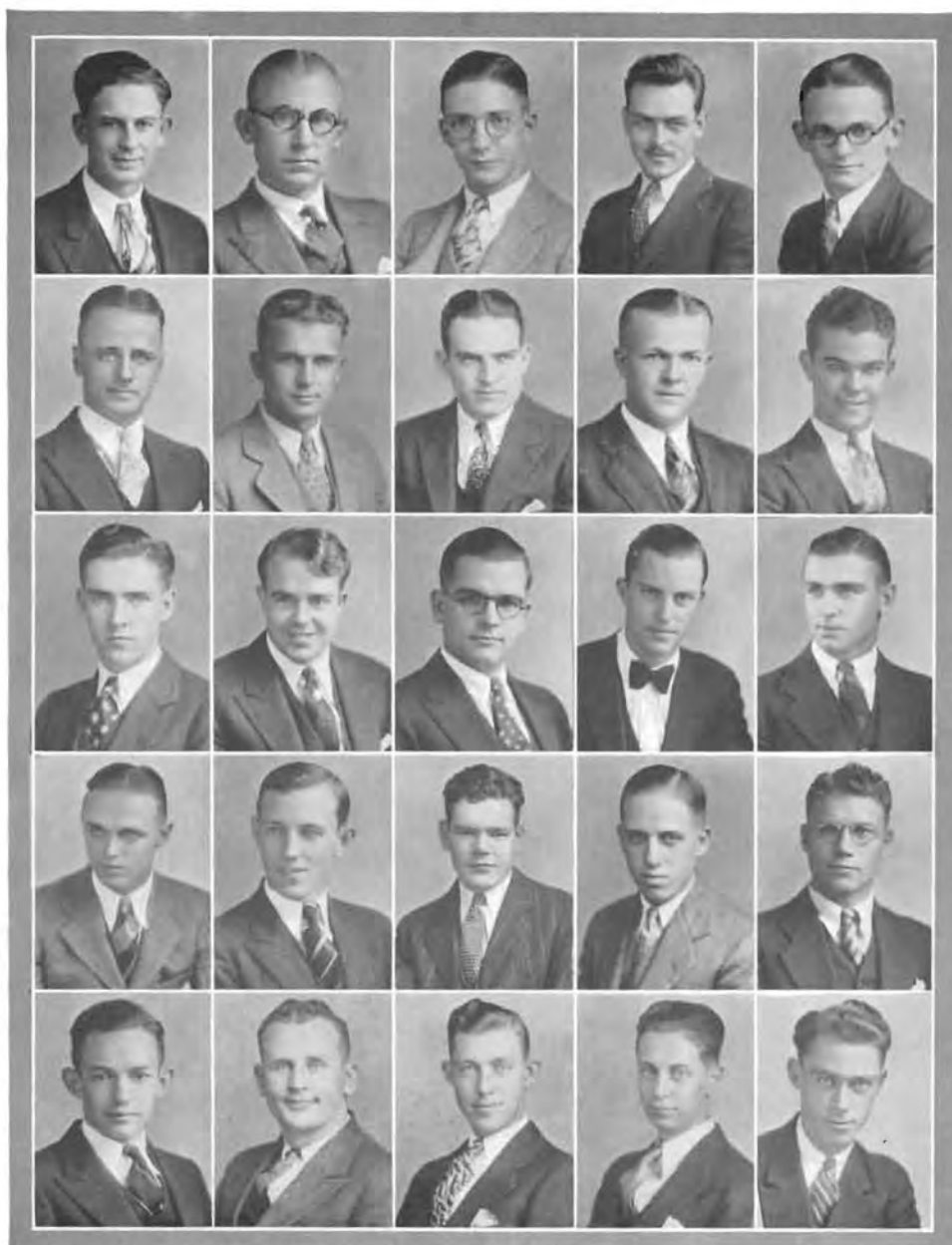
Athens



LATTA, LAWRENCE, MAHER, MAURER, MATTHEWS
MITCHELL, MOGLE, MONCRIEF, MILLER, McMANIS
PINKS, RADCLIFF, ROARK, O. STROHL, E. STROHL
SPOON, STURM, SETTE, TAYLOR, VANCE

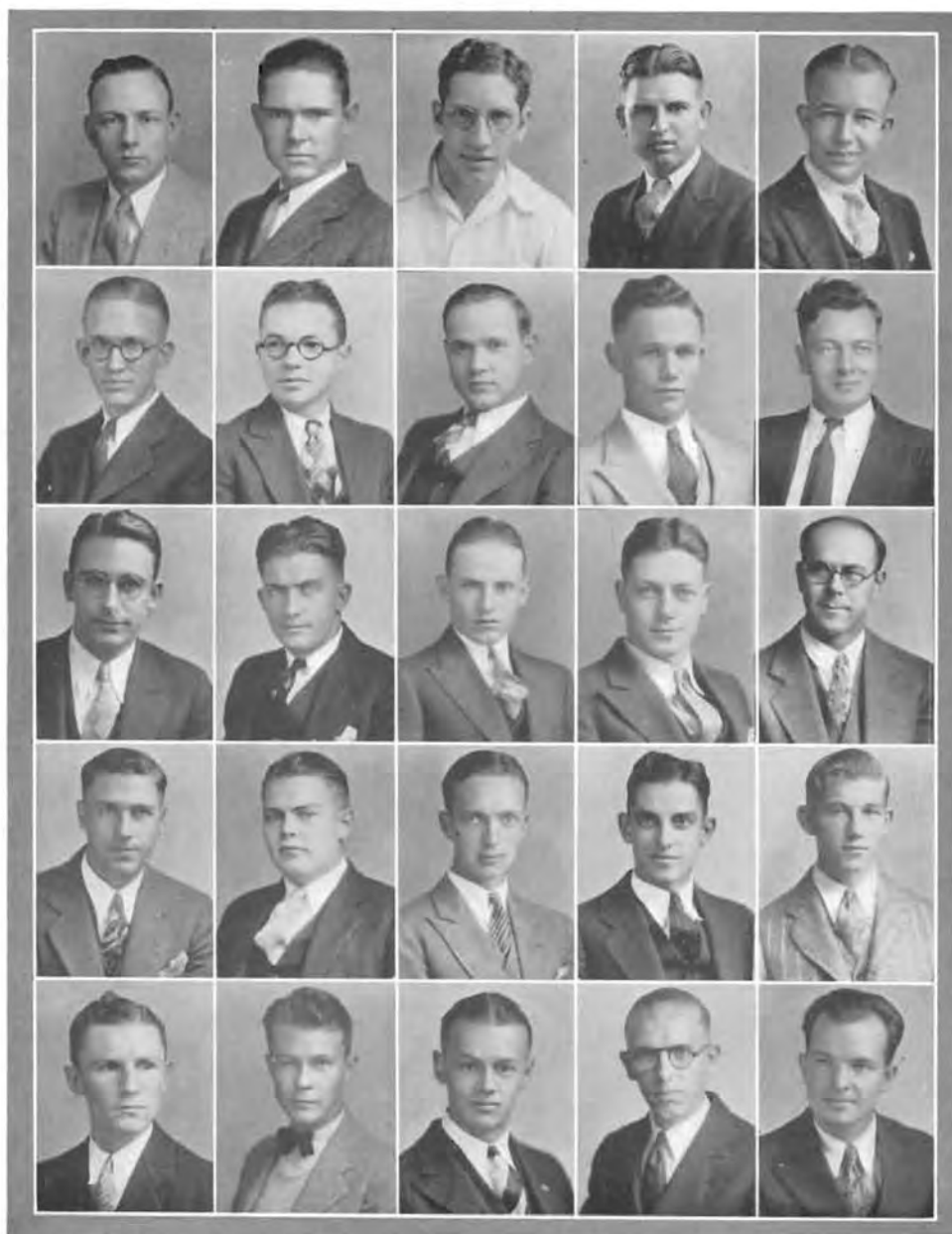


Delphi



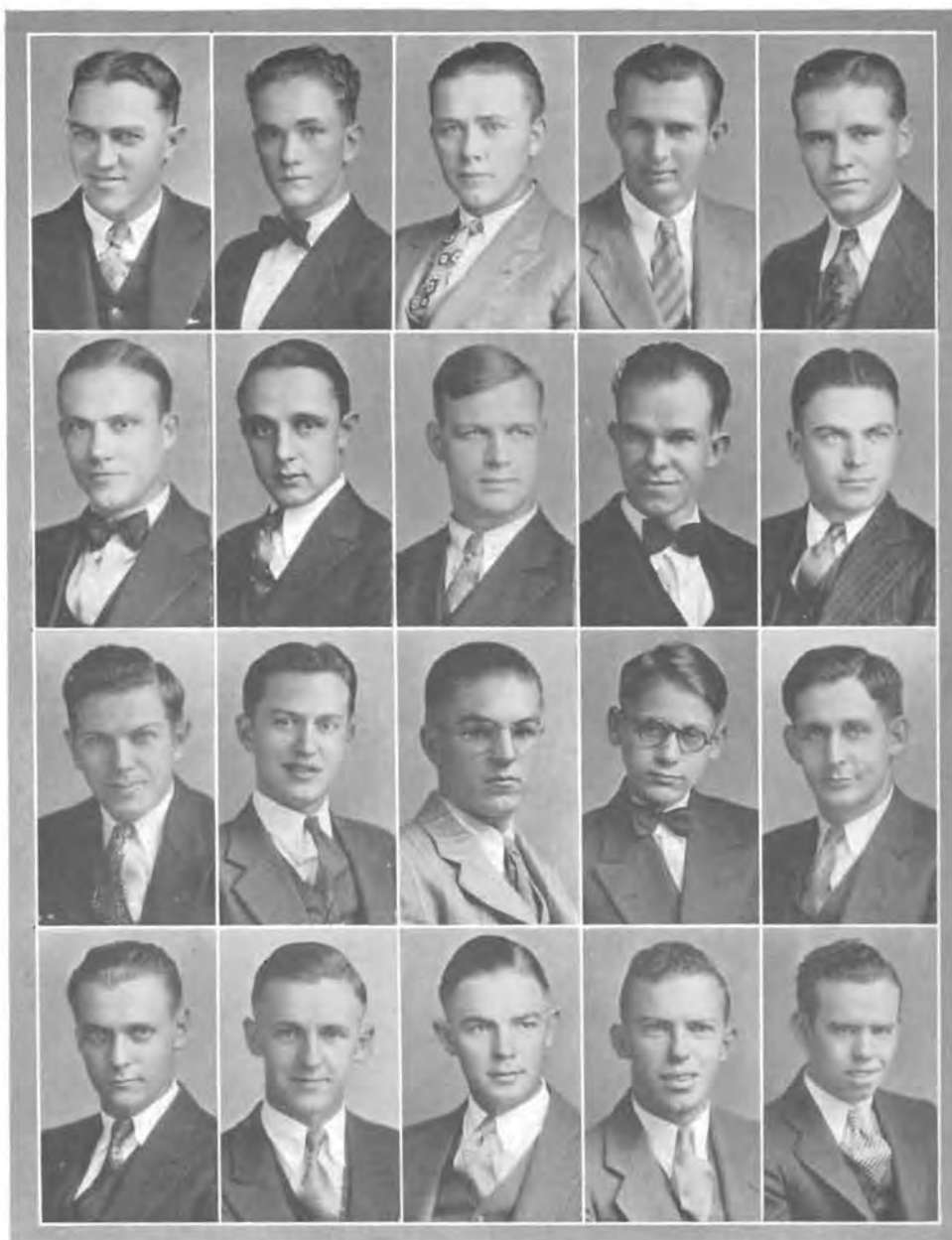
ALTHAUS, BURGESS, BROWN, CAMERON, CUNNINGHAM
DRENNEN, DUGAN, H. ELLIOTT, L. ELLIOTT, M. ELLIOTT
ELY, FARRIS, C. FOULK, E. FOULK, E. FRENCH
H. FRENCH, FULTON, GILMER, GLECKLER, GLENN
GREEVER, GRIFFITH, HAGAN, HATTAN, HICKS

Delphi



HOLGERSON, JEFFERIES, KRAFT, LAMMY, LOY
MARVEL, MAXWELL, McCAULEY, MORELAND, MOORMAN
MORGAN, NORTON, PENCE, PORTER, REEVES
RINKEL, ROGERS, ROYER, SEYB, SMITH
WATERS, WILSON, WOOLARD, WRIGHT, ZIEGLER

Delta Theta Pi



CAMPBELL, G. CRANSTON, L. CRANSTON, CROWLEY, FOLKS
HEIRHOLZER, HOLMES, ONCLEY, RICHARDSON, RIDINGS
RONIGER, SMITH, SPESSARD, STUTZMAN, SWARTZ
THEN, H. WILSON, J. WILSON, P. YOUNG, T. YOUNG



POPULARITY



MISS RUTH SNYDER
Moundbuilder Queen



MR. VIRGIL BRUCE
Most Popular Man



MISS MARTHA McSPADDEN
May Queen



MR. GERALD LEE MILLER
Most Popular Freshman Man



MISS MADELYNE AUSTIN
Freshman Queen

We Present---

MISS RUTH SNYDER

Queen of Moundbuilders, elected by votes cast with the purchase of year-books.

MR. VIRGIL BRUCE

Most popular man, selected by the student body.

MISS MARTHA McSPADDEN

Chosen from Senior Girls to preside as Queen of May on the Evening of May 25th.

MR. GERALD LEE MILLER

Most popular freshman fellow.

MISS MADELYNE AUSTIN

Freshman Queen.



ACTIVITIES



Debate and Oratory



TORRENCE	DAMETT	MOORE	WILSON	WOOLARD	ROYER	KLIEWER
HAMMER	TARBET	HUNTER	COCHRAN	FELT	MC GILL	
HENDERSON	BURGESS	WRIGHT	CHILDS	GUTHRIE	SPEAR	HAGAN

WHAT to say and how to say it correctly has received such attention in Southwestern that her debators and orators have become known not only in Kansas, but, we say with modesty, over the entire United States. Twice we have won the southern division of Kansas. Twice we brought home first place in the State, and twice won second place in the National Tournament. In 1930 at the Pi Kappa Delta Debate Tournament, held in Wichita, the girls' team composed of Phyllis Burgess, Irlene Moore, and Evelyn Hunter out-talked all others and returned home triumphant, bringing the National Cup for first place.

A number of freshmen joined the debators this fall and we look forward to the Regional Pi Kappa Delta Tournament at Pittsburg, April 9-10-11.

In oratory, Southwestern has again pushed forward among her competitors. Six attempts proved successful in winning first in the State and inner-State contests, and four times we won second in the State.

This fall Mary Margaret Damett won the gold key given annually by the coach of oratory in the Baker Declamation Contest. The Girls' Old Line Oratorical contest was won by Evelyn Hunter; and Wayne Henderson captured first among the boys. Evelyn Hunter won the Leathermann Oratorical contest receiving \$15 in prize and Will Wright won second with a prize of \$10. Harold Hammer won the Peace Oratorical contest.

Prof. Baker who is this year coaching debate as well as oratory has exerted untiring efforts to make our team what it is.



PROFESSOR BAKER
Coach

Southwestern Band



KIRKWOOD, TRINKLE, GILMER, FARRIS, GIBSON, HAUSCHILDT, WATROUS, SMITH, FRAZIER, MOODY, MARTIN, LOY, MITCHELL, E. STROHL, CAMERON, WELSH, FOULK, CUDNEY, PENCE, RONIGER, ATKINS, BARNHART, MCMANIS, SPOON, NEWSOM, ELLIOTT, GRIFFITH, BROWN, CUDNEY, KRAFT, ONCLEY, CROUCH, McALLISTER, FOULK, MILLER, BROWN.

TWO years ago, with the advent of Professor Charles C. Brown as its director, the Southwestern Band took on new life. As an initial step, new purple and white uniforms were purchased which blended form and color with the music. The band is governed and disciplined by its officers and an executive committee.



PROFESSOR BROWN
Director

As a pep organization, the band has been on the football field in the fall and on the basketball sidelines in the winter. At pep chapels the band is always foremost with music and pep stimulants.

In connection with its activities as a concert organization, the band has given frequent concerts in Winfield and in January took a tour through the north central part of the state and played at most of the larger cities on the route.

Forty pieces compose this organization which has become known as one of the best concert bands in the state.

The Orchestra



CRAWFORD, ONCLEY, WATROUS, KRAFT, DUNGAN, JENKINS, BENNETT, GRIFFITH, BARNETT, DOBSON, HILBISH, COOK, HALL, WEBB, DAVIS, STUBBS, ROARK, RADCLIFF, BROWN, STUTZMAN, WHITWAM, HILFINGER, STOELZING, CRUSE, McALLISTER, MILLER, CROUCH, SMITH, WELSH, MARTIN, FOLKS, ROUNDS, ATKINS, THOMAS, GILMER, BARNHART, PENCE, STUTZMAN, CAMERON, GIBSON, NYE, FARRIS, DAY.

THE Symphony Orchestra is one of Southwestern's classic instrumental organizations. It is important to Southwestern both as a concert and accompaniment orchestra.

It gives two concerts a year. One pre-Christmas program, and the other a commencement program in the spring. The orchestra distinguishes itself by its wide instrumentation and its evidence of careful study.

Professor C. O. Brown, professor of instrumental music in Southwestern, is the conductor of the orchestra. Under his baton there is growing a symphonic organization well worthy of its place in the Southwestern hall of fame.

The orchestra is the accompaniment for the major musical events of the year. It assists the Festival Chorus in the pre-Christmas program and the school's most talented pianists at the annual Loudonback Piano Recital. It also plays the full accompaniment for the Winfield Oratorio Society in its presentation of the *Elijah* in the Spring.

This organization of high class instrumental music fills quite as well its responsibility to Southwestern of furnishing polished orchestral education and entertainment.



PROFESSOR BROWN
Director

A Cappella Choir



CURFMAN, NEWLIN, STROHL, C. FOULK, WILSON, E. FOULK, HATTAN, ELLIOTT, DEEVER, ROBERTSON, GIBSON, HAGAN, MAXWELL, YOUNG, REED, MILLIKEN, SHALER, RAYL, WILSON, NICHOLSON, PENCE, HAUSCHILDT, RIGGS, MURPHY, SPOON, FRENCH, WIEMEYER, GARRISON, COMPTON, STEVENS, TARBET, MILLS, GILBERT, LEHMANN, HITCH, MITCHELL, ROARK, MOODY, DAVIS, R. SNYDER, YODER, DELLINGER, NEWSOM, SMITH, DENTON, DETTER, NEAL, CLOUD, JENNINGS, T. SNYDER, PARISH, OWENS, BERG, ESCHLEMAN, ALFORD, OPIE, WHITWAM, KREHBIEL

"No choir which has ever visited Chicago has sung better music, and, in fact, if any have sung it better, I did not happen to be present at the time."—MUSIC NEWS, Chicago.

HAILED by Chicago critics and music devotees as one of the four most outstanding college choral groups in the United States on their 1930 tour, the A Cappella Choir this spring launched forth on the most extensive undertaking ever attempted by any Southwestern organization—their first trip to New York.



PROFESSOR OWENS
Director

A reputation as "The Finest Singing Organization in the Southwest" was the result of three years of concertizing in this section of the country. The fourth year with the tour to Chicago, St. Louis, Kansas City, and intervening cities, marked its ascension to very near the pinnacle of esteem in the minds of leading critics. This year, its fifth concert year, was climaxed by the New York appearances, and concerts in all the larger cities on the eastern route.

Faithful, intensive work of talented young vocalists and a skillful, musicianly director are responsible for the remarkable and rapid success of this singing group. Only the highest type of sacred and classical choral music from the foremost composers of each age and nationality are sung. Besides benefiting its own membership, the choir attempts to stimulate interest in the highest type of church music.

Violin Choir



CAMERON, STOELZING, FOLKS, PHILLIPS, HILBISH, COMPTON, COOK, MATTHEWS, WEBB, BENNETT, DUNGAN, JENKINS, KRAFT, DOBSON, ONCLEY, HILFINGER, STUTZMAN, BROWN, CRAWFORD, CRUSE, WATROUS, BARNETT, ALTVATER.

Noble music, sympathetically directed and beautifully played. . . . Professor Altvater, intense, youthful, and artistic, led his Choir through the difficult passages of Wagner and Tschaikowsky with fervor and yet with marvelous restraint.—Wichita Beacon.

TEN years of artistic endeavor, patient experimentation, and steady growth have marked the rise of the Violin Choir from a student training class in ensemble playing to its present position as one of the foremost and most unique instrumental ensembles of the present day.

Behind it all is the genius of Dean H. Hugh Altvater, through whose ideas and vision the Choir was conceived, organized, and perfected. The original structure, producing a richer effect and more flexible handling of the instrumentation, has created a new field in the literature of music. The scores, which are arranged by Dean Altvater, are attracting the interest and attention of musicians and music supervisors throughout the country and are soon to be published for use in school ensemble groups.

The Choir repertoire embraces a large and comprehensive list of the classics from all schools, ranging from Bach and Haydn to Wagnerian opera and outstanding modern composers.

This year the annual spring tour carried the Choir into Oklahoma and eastern Kansas.



DEAN ALTVATER
Director

The Southwestern Collegian



MARVEL

HENRY

THOMSON, BOLES, BOOTH, FARRIS, FOULK, GUTHRIE
RINKLE, REYNOLDS, ONCLEY, MOORE, LOY, LATT

THE Southwestern Collegian, campus newspaper, member of the Central Conference Press Association, this year reversed a conception of years' standing that the primary purpose of a school journal is a "weekly historian of school activities." A newspaper exists for the dissemination of news, editorial attitudes, and advertising at a specific date. Underrating none of the three, The Collegian recognizes editorial integrity and business principle, which has resulted in the production of "a newspaper, not a publication."

Typical of the undergraduate press which constantly struggles for freedom in news and editorial expression, The Collegian has held as its goal truth and editorial freedom, with service to Southwestern paramount in the policy.



VICTOR MARVEL
Editor

Chief in steps of the paper's growth, The Collegian this year published a 12-page Builder Edition—before not attempted in the history of the paper—March 17, the week when two thousand high school students were here for the annual inter-high music and forensic contests. The business department issued The Collegian's first advertising rate card, based on the pattern of the American Association of Advertising Agencies. A staff reporter traced the founding date of the paper to October, 1894, thereby dispensing with confusing serial numbers. Throughout the year no by-lined stories ran; credit went to The Collegian only. Organization trips were reported to the paper by staff representatives en route, to insure timeliness of news. A new signature design for the paper was adopted.

The staff of 1931 feels it has been constructive and a potent factor in the molding of campus thought.



LEON THOMSON
Business Manager

The Moundbuilder



MOORE	DONALDSON	TIBBITTS	BOOTH	GUTHRIE	KIRKWOOD
		WHINERY	STROHL		
WALTER	HAWKINS	MARVEL	LANG	LATTA	FARRIS

THE most appropriate theme that could be chosen for a Southwestern College year-book is one that is closely associated with the school. We believe that the theme of the 1931 Moundbuilder—that of building mounds—is the most appropriate theme that has ever been chosen.

Nearest and dearest to every Moundbuilder student's heart is this name by which he is designated. As the very name Moundbuilder signifies to all who hear it—ambition and achievement—the Moundbuilder of this year is a faithful record of hopes and accomplishments of Southwestern.



CHRISTINE WHINERY
Editor

The Moundbuilding Ceremony originated by Dean Allen just one college generation ago, was suggestive of the theme. It is our belief that to this year's senior class the annual may be a reminder of that ceremony which has grown to mean so much to them.

In this annual through its Moundbuilder theme has been collected the multitude of activities and events, and organizations that go to make up the great Southwestern.

It is our wish that this Moundbuilder will be to you a magic mirror which will present for you your past year in its entirety as you look through its pages. It is our hope that this Moundbuilder has added a small amount to the towering mound that is Southwestern.



ORVILLE STROHL
Business Manager

Women's Athletic Association



WING, DONALDSON, I. TORRENCE, ARNOLD, SCHUERMAN, FINK, STEEN, KENNEDY, BIGLER, MITCHELL, REYNOLDS, DONALDSON, SCHNACKENBERG, COWMAN, FINK, GOSCH, ARMSTRONG, BOWER, GORDON, DELLINGER, FLAHERTY, HARNDEN, BURGESS, FAUSS, AINSWORTH, R. TORRENCE, DUDGEON, ADAMS, SWARTZ, NEWLIN, HUNTER.

IT IS the purpose of the Women's Athletic Association to promote interest in athletics and good sportsmanship among girls and to stimulate pep for all college activities. The local chapter was organized in 1924 under the leadership of Miss Lillian Cloud, director of physical education for girls.



OPAL DUDGEON

All the girls' athletics are sponsored by the W. A. A. Intramural, and class teams have been organized in volley ball, basket ball, baseball, track, tennis and ring tennis.

Points are awarded for participation in these activities and for hiking, keeping health rules, perfect attendance at gymnasium classes and for scholastic achievement. When 300 points have been earned the girl is entitled to membership in the Builderettes, the W. A. A. pep club. The highest honor which a girl may receive is the Southwestern blanket for 2000 points. The white "S" sweater is given for 1500 points.

Southwestern participates in the quadrangular play day which also includes Pittsburg, Friends, and Wichita University. Each year the W. A. A. holds a High School Play Day at which time representatives from various high schools are entertained and contests held.



ATHLETICS



WILLIAM MONYPENY
Coach of Football

Football

ALTHOUGH handicapped by injuries and more than the usual share of "bad breaks," the 1930 Builder football squad made a creditable showing against the best of Kansas grid teams.

Charles Fossey, basket ball captain and veteran on the gridiron squad, was out for the entire season because of a bad knee. Other injuries of a less serious nature kept men on the bench throughout the year. Added to this was the task of finding a number of new men to fill the vacancies of graduation. The 1930 starting lineup often included from three to five men who were playing their first year of collegiate football. The Builders opened the season with a thrilling 13-to-7 victory over Friends University at Wichita. A 98-yard dash for a touchdown by Clay Hildinger, end, was probably the most sensational run contributed by any Builder during the season.

In the Central Conference, the Purple eleven did not fare so well. College of Emporia was tied, 0 to 0. Emporia Teachers outscored the Monypeny men in the annual Homecoming battle, and Pittsburg Teachers handed them a setback on the home field. In the yearly grudge game with Wichita University, the Shockers were victorious, 18 to 7.

The squad then journeyed to Shawnee, Okla., to engage the Oklahoma Baptist University. After a poor first half, the Purple team came back with a brilliant rally in the closing minutes, but fell short by a single point. The powerful Washburn eleven, champions of the Central Conference, defeated the Builders, 33 to 6.



WOOLARD, ANDERSON, HAMMOND, HENSLEY, SMITH, BRUCE, L. HAM, GLENN
CORP, GOSH, T. MAUCK, TATON, SWARTZ, C. GERBOTH, NININGER, C. HAM
WILLIAMS, SIDWELL, J. GERBOTH, OKERBERG, PARKER, HILDINGER, OSSOWSKI, HAUSCHILDT,
MONYPENY
DUSENBERRY, NOEL, MAYS, RICHARDSON, McALLISTER, PAKOZDI, SHIRE, EVERETT, WILCOX

Football

SEASON RECORD

Southwestern.....	13	Friends University...	7
Southwestern.....	0	College of Emporia..	0
Southwestern.....	13	Emporia Teachers...	27
Southwestern.....	0	Pittsburg Teachers...	20
Southwestern.....	7	Wichita University..	18
Southwestern.....	18	Oklahoma Baptist U.	19
Southwestern.....	6	Washburn.....	33
Southwestern.....	21	Hays Teachers.....	0

CENTRAL CONFERENCE STANDING

	<i>Won</i>	<i>Lost</i>	<i>Tied</i>	<i>Per cent</i>
Washburn.....	6	0	0	1.000
Wichita University...	4	1	1	.800
Emporia Teachers...	2	1	3	.667
Pittsburg Teachers...	3	3	0	.500
Southwestern.....	1	4	1	.200
Hays Teachers.....	1	4	1	.000
College of Emporia...	0	4	2	.200



MAURICE WILLIAMS
Assistant Coach Football



Ready for the plunge

FOOTBALL



LEONARD NOEL—Noel is only a freshman, but his great playing won him a place on the second All-Conference selection.

RAYMOND McALLISTER—A shoulder injury handicapped "Mac" all during the season. He has two more years to wear Purple moleskins.

BERNARD PARKER—Parker's ranginess made him an ideal choice for one of the wing positions.

ORLEY WILCOX—When Orley played his last game on Thanksgiving day, Southwestern lost a good captain, a smart field general, and one of the best ball-carriers of the Central Conference.

WILFRED OKERBERG—Sport fans of Kansas will long remember the versatile playing of the mighty "Oke." His work in the Central-Kansas conference charity game at Topeka was outstanding.

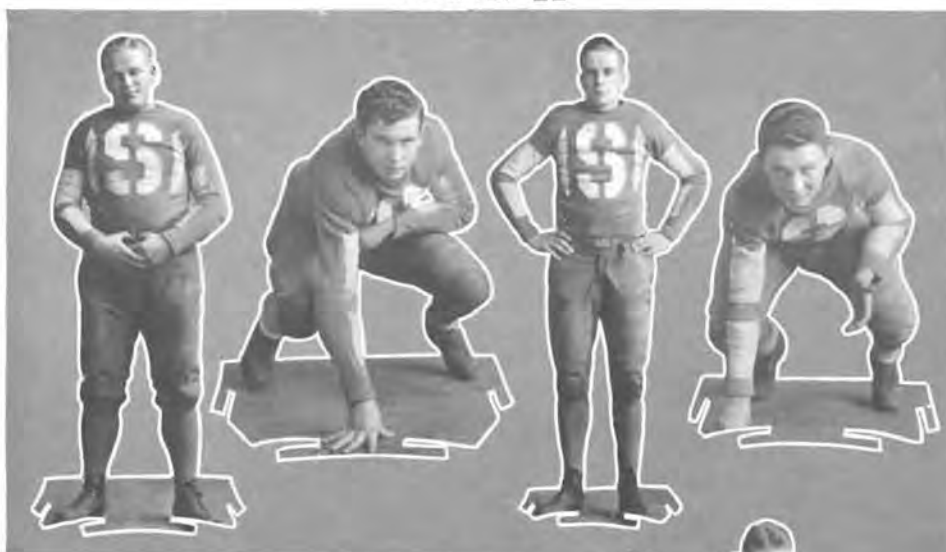
RUSSELL HAMMOND—"Rusty" proved to be a mighty valuable sub on more than one occasion. He is a freshman.

CALVIN HENSELY—Hensely was one of the hardest-hitting ball carriers the Purple team possessed.

Below—Hays makes a wide end sweep.



FOOTBALL



OSWALD HAUSCHILDT—"Oz" ended his gridiron career by playing his usual dependable game. He ranks with the best centers of the conference.

HALBERT EVERETT—Everett proved a valuable understudy at the pivot position. He should make a name for himself in the next three years.

VIRGIL BRUCE—"Brucey" played regularly at an end position. His ability to catch passes from all angles and in all positions made him feared by the opposition.

ALLAN WOOLARD—"Pewee" subbed at the quarter position. A 70-yard run against Washburn was his best contribution of the season.

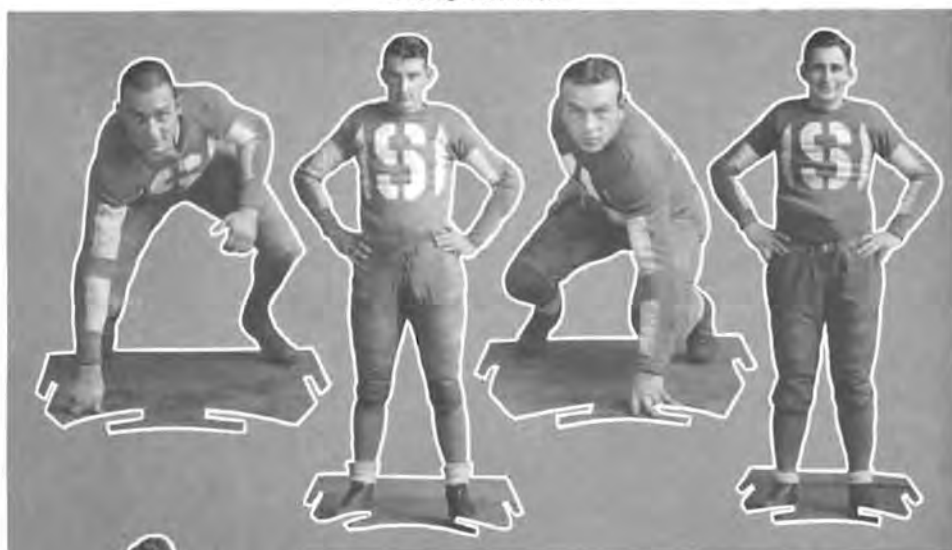
LEE HAMM—Lee was the smallest man on the Purple line, but he made up for his size with his everlasting fight.

LAWRENCE RICHARDSON—"Jake" worked at quarter and did some mighty fine playing. He has one more year of competition.

Below—A mixup in the Turkey-Day battle.



FOOTBALL



DAN SWARTZ—Dan's size and ability proved mighty useful at tackle. He has played his last game for Southwestern.

THEYMAN MAZE—Maze played his first year for the Purple and broke into the lineup frequently at a guard position.

CLAY HILDINGER—"Hildy" was shifted from center to end at the start of the season. His 98-yard dash against Friends was the most sensational of the year.

TRUMAN MAUCK—Although lighter than most of the linemen, Mauck was one of the hardest scrappers on the Builder squad. He has one more year to play.

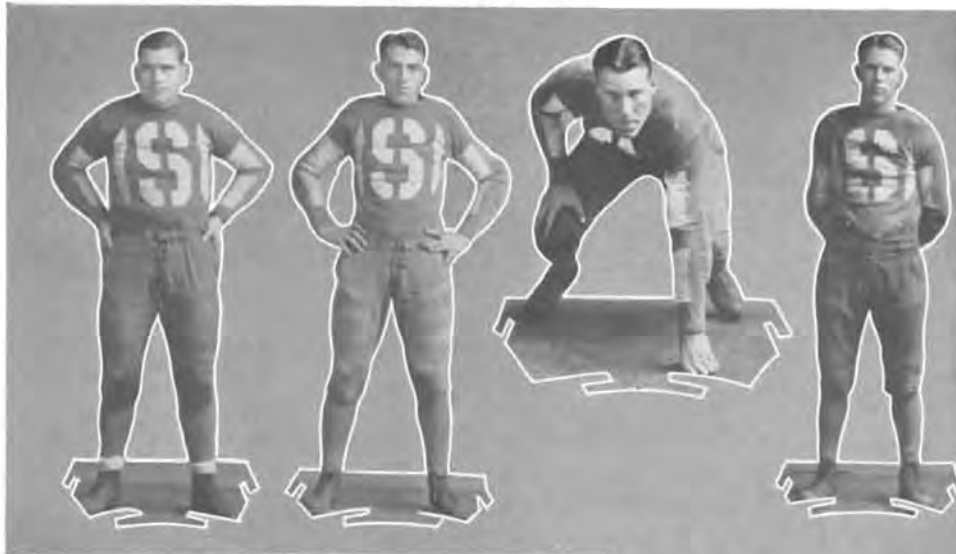
LYLE GLENN—Glenn had few chances to lug the ball this year, but he should have plenty in the next three seasons. He is one of the fastest men on the squad.

KENNETH DUSENBURY—"Dusey" was never sensational, but always played a clean, hard game at guard. He is a sophomore.

Below—Wilcox twists through center for gain.



FOOTBALL



BYARD ANDERSON—When "Andy" and Noel worked side by side, the opposition gained little ground through the right side of the line.

EDGAR NININGER—Ed's all-around ability as an athlete and a gentleman won him the captaincy of the next year's team. He is the fastest backfield man on the Builder squad.

MARTIN OSSOWSKI—"Baldy" worked in both the backfield and the line. He is a sure tackler and a hard fighter.

HOWARD SIDWELL—"Sid's" deceptive running and side-stepping ability made him a dangerous man in a broken field. He is a junior.

JUEL GERBOTH—If "Big Gerb" ever got up the speed of a ten-second dash man, you might as well try to stop a steam roller on the downgrade.

KEITH CORP—Corp's ability to lug the ball allowed him to break into the lineup rather frequently. He has three years yet to play.

Below—When S. C. and Hays Teachers tangled



1931

The Season's Record



WILLIAM MARTIN
Coach Basket Ball

Bethany.....	25	Southwestern...	21
Colorado Teachers, Greeley.....	32	Southwestern...	19
Maryville Teachers...	31	Southwestern...	15
Maryville Teachers...	27	Southwestern...	20
College of Emporia...	16	Southwestern...	35
Friends University...	25	Southwestern...	35
Bethany.....	22	Southwestern...	28
Emporia Teachers...	36	Southwestern...	35
College of Emporia...	26	Southwestern...	38
Friends University...	20	Southwestern...	36
Pittsburg Teachers...	39	Southwestern...	29
Washburn.....	24	Southwestern...	25
Wichita University...	32	Southwestern...	17
Hays Teachers.....	29	Southwestern...	32
Washburn.....	12	Southwestern...	25
Emporia Teachers...	33	Southwestern...	40
Pittsburg Teachers...	24	Southwestern...	22
Hays Teachers.....	27	Southwestern...	37
Wichita University...	26	Southwestern...	16
Chilocco Indians.....	7	Southwestern...	30
Emporia Teachers...	22	Southwestern...	14
Weatherford, Okla., Teachers.....	27	Southwestern...	19



Satisfied Spectators



Basket Ball

CHARLES FOSSEY—Captain "Cob" has played his last basket ball game for Southwestern and has added a fourth stripe to his sweater for four years of play on Builder teams. Despite a knee injury which kept him out of the game almost all of the preceding season and which hampered his play during the past year, Fossey played fine basket ball and proved a popular and capable leader of the squad. Fans will not soon forget how he pulled the Washburn game out of the fire with a beautiful goal in the closing seconds and his determined playing in the Pittsburg-Southwestern battle.

HOWARD SIDWELL—"Sid's" brilliant playing has won him the captaincy of the Purple squad of next year as well as countless places on "all" teams, both official and unofficial. His ability at handling the ball, dribbling and deceptive passing, as well as his eye for the basket has made him a popular choice for a guard position on the mythical all-Central team. After watching Sidwell play one sports writer of the Central loop remarked in the columns of his paper that the only way to stop him was to tackle him below the knees. Doubtless several of the opposing players had figured that out long before.

LEE SHEPARD—Although Shepard did not have the opportunities that fell in the path of some of the other players, he took advantage of the chances which come his way. He subbed at the forward positions. "Shep" is a good dribbler, and is the fastest man on the Purple squad, but is handicapped by his size. He has won two letters and has a chance to add another year.

WILFRED OKERBERG—After four years of competition on Builder athletic teams, "Okey" leaves Southwestern with a versatile sports record that challenges the best in the state. On the gridiron, basket ball court, and cinder track he has proved himself a great athlete. In his four years he has played forward, center, and guard on the basket ball squad. During the past season he jumped center and dropped back to a defensive position. He consistently out-jumped every opposing center and was rated as one of the greatest defensive players in the Central Conference. Nearly every sports authority that named an all-conference team placed "Okey" on either the first or second five.

Basket Ball

HALBERT EVERETT—Everett is a freshman from Colorado who played his first year on the Purple squad. He is big and husky and proved a valuable man at the defensive posts. Occasionally he jumped center and then dropped back to guard when Okerberg was not in the line-up. With more experience Everett should put up a good fight for one of the regular guard positions.

CHESTER HAMM—"Chet" proved a capable understudy for the first-string guards during the early part of the season, and when Sidwell was injured stepped into the varsity play. Although inexperienced in collegiate basket ball, he developed quickly and broke into the line-up regularly. He is a rangy player and takes the ball from the backboard in nice fashion. He has three more years of competition and should be holding down a regular job during that time.

MILTON WHITSON—"Whit" played his first year for Southwestern and proved to the sports fans that he is one of the greatest players to come to the Builder school in several years. "Tip-in" and "follow" shots, the ability to pivot and dribble around a guard, and everlasting fight from whistle to gun made Whitson an almost unanimous choice for all-Central honors. Schmidt of Pittsburg, was the only other choice of the writers that was more popular than the Builder pivot ace, and was, incidentally, the only other player to outscore him in the Central conference.

VIRGIL BRUCE "Brucey" was shifted from the center position to a forward berth at the start of the season and played his best in every game. His ability to secure the ball on the tip-off, his excellent floor play and fight made him an indispensable cog in the Purple machine. His season's play earned him a place of honorable mention on most of the all-Central selections. He is a sophomore and has two more years to don a Builder suit.



Southwestern Intercollegiate Tournament

FIRST place in the Third Annual Southwestern Intercollegiate Basket Ball Tournament went to the University of Wichita, runners-up in the Central Conference by defeating Maryville Missouri Teachers, defending champions, 27 to 23 in the final game.

Four states, Missouri, Oklahoma, Nebraska, and Kansas, were represented in the third annual meet, which was held March 4, 5, 6 and 7 in Stewart Gymnasium. Play in the tourney was closer than in either of the previous meets, several of the games being decided by one-point margins or in over-time periods.

Southwestern was eliminated in the second round by Emporia Teachers College. The Builders were greatly handicapped for the tournament by the loss of Howard Sidwell, all-conference guard, who was forced out with a knee injury.

THE WINNERS

Wichita University—First.
 Mary, Mo., Teachers—Second.
 Central Teachers, Edmond, Okla.—Third.
 Emporia Teachers—Fourth.
 Chilocco Indians—First round consolation winner.
 College of Emporia—Second round consolation winner.

THE ALL-TOURNAMENT TEAMS

First Team

FISCHER, Maryville F
 GROVE, Wichita F
 McCRACKEN, Maryville C
 HENNIGH, Wichita G
 CLEVELAND, Central Tch. G

Second Team

BROWN, College of Emporia
 COWDEN, Maryville
 REYNOLDS, Central Teachers
 MOFFATT, Wichita
 P. BURKE, Emporia Teachers



Presentation of Trophy

Baseball

AFTER an absence of two years, baseball was returned to Southwestern as a minor sport in the spring of 1930. Because of the conflict with track and the fact that only one other Central Conference school was represented on the diamond, baseball was again dropped from the roll of Builder sports during the present year.

When Coach Ersal Cain called out the 1930 diamond players only two or three of the men who responded were experienced players, these having been members of various independent teams. With the exception of Robert Weir, a freshman southpaw, Coach Cain was unable to find a consistent hurler. None of the squad members were experienced in the pitching duties, so the brunt of the season's mound work fell on Weir.

Series of games were played with St. John's College of Emporia, St. Mary's and the Chilocco Indians. Although the majority of the games were lost, the Builders did well for inexperienced players, who were likewise handicapped by the lack of a good diamond on which to practice.



ERSAL CAIN
Coach



WRIGHT, ANDERSON, BRUCE, CROWLEY, GREEN, WEIR, POPPE
CAIN, KAWAMURA, SMELTZER, DUNKELBERG, KLAVER, RICHARDSON

Track



ERSAL CAIN
Coach

THE 1930 Builder track squad, composed largely of new material, made a fair showing during the season. With the exception of two the entire squad is back in school, indicating that the 1931 team should be stronger than the one of '30.

A mile relay team composed of Ely, Roniger, Wolfe and Woolard, with Gerboth, a distance runner, entered the K. C. A. C. indoor meet. The relay team ran second in its division to the fast Haskell Indian quartet.

The annual class affair went to the Juniors. The Freshmen and Sophomores tied for second and the Seniors were fourth. The meet was the closest in history, only six points separation between the winner and fourth place.

Oklahoma Aggies, defending champions of the Missouri Valley, defeated the Builders at Stillwater 86 to 45 in a dual tilt. In another dual meet with Chilocco Indians, Southwestern was easily victorious on the home field.

In a triangular meet at Wichita, with Friends University, Bethel and Southwestern competing, the Builders were nosed out of first place by a single point. The final results were: Friends 66, Southwestern 65, Bethel 2.

In the Central Conference meet, held under the floodlights at Topeka, the Builders placed last with $5\frac{1}{2}$ points.



GERBOTH, WILLIAMS, OKERBERG, COACH MONYPENNY, L. SHEPARD, RONIGER
WOOLARD, SEYB, MOORE, NININGER, ELY

Subscribers Among Winfield Business Organizations

DR. C. C. HAWKE, 306 State Bank Building
THE STATE BANK, 823 Main Street
LANE AND MARTIN CHEVROLET Co., 114 West Eighth Street
WINFIELD NATIONAL BANK, 901 Main Street
C. T. RALLS, 413 First National Bank
THE FIRST NATIONAL BANK, 900 Main Street
STALEY'S STUDIO, 206 West Ninth Street
RADLEY ICE CREAM Co., 1117 Main Street
GENERAL BODY AND FENDER WORKS, 112 West Eleventh Street
CHARLES M. McCUE, 411 State Bank Building
DR. NELLIE HOLLOWELL, 104½ West Ninth Street
HILL MOTOR Co., 215 East Ninth Street
HARTER MOTOR Co., 714 Main Street
MCGREGOR HARDWARE Co., 123 East Ninth Street
J. E. BANKS, 103½ East Ninth Street
DRS. SNYDER, JONES AND SNYDER, 103½ East Ninth Street
W. C. ROOT AND Co., 817 Main Street
GOODMAN'S MEN'S WEAR, 819 Main Street
M. B. KERR Co., 112 East Ninth Street
DR. P. W. GIBSON, 103½ East Ninth Street
PIERCE'S BOOK STORE, 113 East Ninth Street
THE UNIQUE CLEANERS, 213 East Ninth Street
CITY LUNCH, 220 East Ninth Street
AVENUE CLEANERS, 310 East Ninth Street
DR. H. A. TRUESDELL, 103½ East Ninth Street
WINFIELD SHEET AND METAL WORKS, 824 West Ninth Street
J. B. LYNN AND SON, 721 Main Street
KING'S CONFECTIONERY, 117 East Ninth Street
KAY AND KAW FURNITURE Co., 801 Main Street
BIRD'S REXALL STORE, No. 2, 117 College Street

Personal Index

A	Page
Adams, Marie.....	64, 100
Adams, Mary.....	50, 128
Adams, Myrtle.....	64, 128
Adams, Lucille.....	64, 100
Ainsworth, Erma.....	57, 102, 128
Alban, Eugene.....	42, 106
Albright, Penrose.....	26
Allbritten, Geraldine.....	50, 74, 82, 104
Alford, Elizabeth.....	64, 98, 124
Allen, Leroy.....	26, 79, 84
Allsbury, Reba.....	57
Althaus, Floyd.....	64, 110
Altwater, H. Hugh.....	35, 125
Altwater, Mrs. H. Hugh.....	26
Ambrose, Frances.....	35, 42
Anderson, Byard.....	57, 78, 106, 130, 135
Appel, Marie.....	64
Archer, Elizabeth.....	50
Armstrong, Cleo.....	50, 102, 128
Armstrong, Dora.....	64, 80
Arnold, Edna.....	57, 77, 98, 128
Arnold, Joe T.....	57
Ash, James Russell.....	57, 81
Atkins, Dorothy.....	50, 104, 122, 123
Austin, Madelyne.....	64, 91, 100, 119

B	Page
Bagby, Nathe P.....	27
Baker, Harold.....	57
Baker, J. Thompson.....	27, 79
Baker, Margaret.....	64, 98
Barbour, Hobart L.....	35
Barlowe, Maxine.....	64, 98
Barnett, Mazie.....	123, 135
Barnhart, Clifford.....	57, 122, 123
Barnhill, Benjamin.....	64
Becknell, Catherine.....	64
Bennett, Lenna Vee.....	50, 123, 125
Berg, Maurine.....	42, 73, 90, 98, 124
Bigler, Lydia.....	50, 74, 77, 104, 128
Boger, Eva Jeanette.....	50, 98
Bolack, Gladys.....	42, 76, 77, 82, 98
Boles, Walter E.....	50, 84, 126
Boley, Robert.....	64
Bolinger, George.....	64, 106
Booth, Charles.....	57, 84, 126, 127
Bower, Mrs. Edna.....	40
Bower, Gladys.....	42, 74, 128
Boyd, Fern.....	57, 77, 82
Bradley, Helen.....	57, 77
Bratton, Dorothy.....	57, 98
Breazeale, Howard T.....	57
Brenn, Garcel Irl.....	50, 81
Brown, Bryce.....	42, 94, 106
Brown, Charles.....	64, 110
Brown, C. O.....	36
Brown, Doris.....	50, 100
Brown, Esther.....	40
Brown, Everett.....	50, 107, 122, 123, 125
Brown, Richard.....	57, 80
Bruce Virgil.....	57, 78, 84, 108, 116, 130, 133, 139, 141
Buchman, Pearl.....	64
Bunch, Leitha.....	42, 73
Bunch, Niles.....	57

	Page
Burdette, Marie	36
Burgess, Phyllis	51, 79, 93, 104, 121
Burgess, Lyman	42, 75, 81, 83, 110
Burgess, Ruby	42, 73, 75, 82, 104, 128
Burr, Mae	57, 104
Buss, Erma	57, 100
Bussard, Joe	51
Butler, Madge	51, 104

C	Page
Cain, Ersal.....	27, 78, 141
Calvert, Russell.....	42
Cameron, Woodrow.....	57, 110, 122, 123, 125
Campbell, Harold.....	57, 112
Carr, Nadina.....	57, 102
Casburn, Mrs. Mabel.....	40
Cavitt, Reed.....	40
Childs, Marion.....	64, 98, 121
Chubb, James S.....	27, 74
Clark, Gertrude.....	58, 102
Clark, Homer.....	58, 94, 106
Cloud, Lillian.....	28
Cloud, Lois.....	58, 124
Clift, Claudine.....	64, 98
Cobb, Mrs. Edna.....	40
Cochran, Blake.....	51, 79, 84, 95, 108, 121
Coffey, Cecil.....	51
Coffey, Harley.....	64
Cole, Ruby.....	42
Collinson, Albright.....	64, 108
Compton, Eva.....	64, 98, 124
Compton, Grace.....	36, 125
Coonfield, R. B.....	28
Cooper, Lucille.....	58, 91, 100
Cook, Bernita.....	65
Cook, Fernando.....	65, 108, 123, 125
Cornelius, Eduard G.....	28
Corl, Pauline.....	58
Corp, Keith.....	65, 75, 83, 106, 130, 135
Corrie, Margaret.....	42
Cotton, Harold Pink.....	43, 80
Cowan, Presley.....	40
Cowman, Alberta.....	65, 104
Cowman, Goldie.....	43, 128
Crank, Edwin.....	43
Cranston, Erlis.....	43
Cranston, George.....	65, 112
Cranston, Lyle.....	65, 112
Crawford, Loren B.....	59, 94, 106, 123, 125
Cron, John.....	65, 106
Cronmeyer, E. B.....	28
Crouch, Harvey.....	58, 122, 123
Crowley, Byron.....	58, 78, 112, 141
Cruse, Mildred.....	43, 73, 123, 125
Cudney, Roy.....	65, 122
Cudney, Verle.....	51, 100
Cundiff, Mae.....	43, 77, 102
Cunningham, Lawrence.....	65, 110
Curtman, Edna.....	65, 104, 124

D	Page
Dace, Doris.....	51, 100
Dadisman, R. A.....	40
Damett, Mary Margaret.....	51, 121

Personal Index---Continued

	Page
Davis, Keith	43, 73, 74, 124
Davis, Paul	58
Davis, Margaret	43, 92, 102, 123
Davis, Mary	51, 104
Day, Lawrence	59, 108, 123
Deever, Harold	58, 84, 95, 108, 124
Deever, Hazel	65
Dellinger, Mildred	51, 104, 124, 128
Den, Amy Gin Ping	51, 80, 102
Denton, Viola	124
Detter, Dorothy	43, 124
Devore, Doris	65, 100
Dial, J. R.	72
Dibbons, Erma	43
Dietrick, Edwin	58, 108
Dillard, Jack	65
Dixon, Melvin	58, 106
Dobson, Margaret Ann	51, 98, 123, 125
Donaldson, Elma	65, 128
Donaldson, Ethel	58, 128
Donaldson, Paul	52, 84, 94, 106, 127
Drake, Eleanor	65
Drennan, Alice	52, 76, 77
Drennan, Dean	65, 84
Drennan, West	43, 110
Dryden, Ruth	65
Dudgeon, Opal	43, 98, 128
Duditts, William	65
Dugan, Lawrence	58, 84, 110
Dungan, Marjorie	65, 104, 123, 125
Dunlevy, Robert B.	29
Dunn, Darrell	52
Dusenbury, Kenneth	58, 78, 106, 130, 134

E

Edmiston, Wilma	65
Elder, Marion	58, 98
Elliott, Harold	52, 78, 84, 110
Elliott, Lawrence	65, 110
Elliott, Marvin	65, 84, 110, 122, 124
Ely, George C. Jr.	58, 75, 78, 110, 142
Eshbaugh, Curtis	72
Eshleman, Ruby Lee	44, 100, 104
Everett, Halbert	66, 78, 130, 133, 139

F

Farris, Berlyn	58, 81, 83, 110, 122, 123, 126, 127
Fauss, Grace	44, 76, 77, 128
Felt, Wilbur	44, 83, 94, 106, 121
Feng, Pang Yen	44, 80
Farris, Clemmie	44, 90, 98
Figley, Jack L.	44, 74, 75, 81
Fioramonti, Achille Adelgheim	37
Fioramonti, Anna Kousnetzoff	37
Fink, Alan	58
Fink, Dorothy	66
Fink, Mary	52, 128
Fisher, Marlin	66
Flaherty, Hazel	66, 98, 128
Flook, Mildred	58, 100
Folks, Berl	59, 97, 112, 123, 125
Fossey, Charles	44, 78, 138
Foshee, Irene	59, 104
Forbes, Whynemina	66, 98

	Page
Foulk, Earl	66, 110, 122, 124
Foulk, Carl	66, 110, 122, 124
Franklin, Ezra T.	25
Frankum, Zepha	66
Frazier, Glen	108, 122
French, W. Ellis	52, 110, 124
French, Homer	59, 84, 110
Fulton, Dwight	66, 110

G

Gantz, Elsie	44, 80
Garrison, Ruth	59, 104, 124
Garton, Edna	59
Garver, Roger	44
George, R. L.	25
Gentry, Dick	59, 108
Gerboth, Clayton	59, 78, 103, 142
Gerboth, Juel	66, 78, 103, 135
Gibson, William	95, 108, 122, 123, 124
Gilbert, Lucille	66, 104, 124
Gillock, Ruth	59, 104
Gilmer, Josephine	66, 98
Gilmer, Robert	44, 110, 122, 123
Giltner, Marian	59, 98
Glecker, Donald	66, 83, 110
Glenn, Lyle	66, 78, 110, 130, 134
Goldsmith, Dr. Wm. G.	29
Goldsmith, Mrs. Wm.	29, 76, 77
Goodier, Lura	44
Goodell, Roy	44
Gordon, Loretta	66, 128
Gosch, Boyd	59, 106, 130
Gosch, Geraldine	45, 77
Gosch, Gladys	59, 82, 128
Gosting, Bessie	52, 74
Gray, Cecil	66, 108
Green, Everett W.	45, 78
Green, Keith	66, 106
Greever, Merle	66, 110
Gregory, Edna	45, 76, 77, 104
Griffith, Lester	53, 110, 122, 123
Gurtner, John	45, 81
Guthrie, Eleanor	59, 77, 100
Guthrie, Gersilda	59, 100, 121, 126, 127
Guy, George	66

H

Hagan, Carl	59, 110, 121, 124
Hagans, John	59, 81, 106
Hall, Phyllis	67
Hamilton, Helen	59, 98
Hamilton, John	59
Hamilton, Robert	59, 108
Hamm, Chester	67, 78, 107, 139
Hamm, Lee	67, 78, 106, 130, 133
Hammer, Harold	67, 107, 121
Hammer, Mildred	44
Hammond, Frances	59, 100
Hammond, Russell	67, 130, 132
Hancock, Tennie	67, 80
Haney, Ralph	45
Hardesty, Richard	45, 81
Harnden, Vera	45, 128
Harper, Miller	67

Personal Index---Continued

	Page
Hatton, Garland	67, 110, 124
Haug, Edward	67, 81
Hauschildt, Oswald	52, 78, 122, 124, 130, 133
Hawkins, Ted	127
Hayes, Eleanor	29
Healzer, Catherine	67, 98
Henderson, Wayne	67, 84, 108, 121
Henry, Helen	59, 104, 126
Hensley, Calvin	130
Herr, Ada	30
Hess, Harlan	60
Hierholzer, Elmer	52, 81, 112
Hicks, Blake H.	67, 110
Hicks, Opal	67, 100
Hilbish, Maxine	67, 104, 123, 125
Hildinger, Clay	60, 78, 130, 134
Hilfinger, Dean	60, 108, 123, 125
Hill, Lois	40
Hitch, Marjorie	60, 100, 124
Hoag, Helen	60, 100
Holgerson, Blanche	72
Holgerson, C. Emil	67, 83, 111
Holmes, Elza	60, 112
Hull, Helen	67, 104, 123
Hunburg, Thelma	67, 100
Hunt, Ida Clawson	48
Hunter, Evelyn	60, 79, 82, 84, 93, 104, 121, 128
Hushaw, Keith	67, 108

I

Ingle, Twyla	60, 100
Irvine, Leota	45, 77, 102
Irvine, Leitha	45, 92, 102

J

Jacques, Eva	30
Jefferies, Archie	67, 111
Jenkins, Ruth	52, 123, 125
Jennings, Wanda	60, 98, 124
Jewell, Marian	77, 104
Johnson, Basil	45
Johnson, Genevieve	53
Johnson, Harold	53, 108
Johnson, Helen	67, 80
Johnson, Ruth	60

K

Kawamura, Kinichi	45, 74, 78, 80, 96, 141
Kealer, Beatrice	60
Kelly, John	67
Kelly, Robert	60, 107
Kemp, Evelyn	69
Kendall, Ruth	60
Kennedy, Mercedes	68, 128
Kenreich, Virginia	60, 77, 104
King, John	53, 108
Kirkwood, Roger	68, 84, 108, 122, 127
Klaver, William	68, 78, 141
Kliwer, Lee Von	68, 81, 121
Kope, Blair	60
Kraft, Roberta	68, 104, 123, 125
Kraft, Virgil	53, 83, 84, 111
Krehbiel, Dorothy	53, 93, 104, 124
Krehbiel, Mildred	68, 84, 104
Kunzman, Rowena	68

L

Lammy, Robert	46, 84, 96, 111
Lancaster, George	68, 107
Landon, Margaret	68
Lang, Harold	53, 127
Latta, Lester	60, 84, 95, 109, 126, 127
Lawrence, Harry	60, 109
Lehman, Clairnelle	60, 100, 124
Lewis, Margaret	46, 77, 102
Little, Clifford	68
Loudenback, Henry J.	38
Loy, Harold	11, 68, 83, 126, 129
Lydick, Edwin	60, 75, 108

M

Maher, Dyke	60, 108
Marriott, Elsie	46, 90, 98
Marsh, T. Reese	31, 88
Marsh, Mrs. T. Reese	31
Marshall, Arlone	60, 77, 100
Martin, William	31, 136
Martin, Don	46, 122, 123
Marvel, Ruth	40, 61, 105, 127
Marvel, Victor	46, 84, 96, 111, 126
Matthews, Donald	61, 78, 108
Matthews, Russell	61, 125
Mauck, Truman	53, 78, 130, 134
Maurer, Melba	61, 68, 98
Maurer, Norman	109
Mawdsley, Esther	46
Mawdsley, Lois	61
Maxwell, Wayne	61, 111, 124
Maze, Theyman	130, 134
Meade, Blanche	72
Melberg, Evelyn	46, 74, 82, 91, 101
Myers, Homer S.	32, 84
Miller, Gerald Lee	68, 83, 84, 109, 118, 122, 123
Miller, Fern	61, 99
Miller, Violet	68, 99
Milliken, Inez	53, 105, 124
Mills, Louise	68, 105, 124
Mitchell, Alberta	61, 102, 128
Mitchell, Howard	109, 122, 124
Mock, Jean	68, 99
Mogle, Olive	68
Mollie, Richard	61, 109
Moody, George	46, 122, 124
Moore, Irlene	40, 53, 74, 79, 91, 110, 121, 126, 127
Moorehead, Cora Conn.	38
Moncrief, Frances	53, 99
Moncrief, Frank	61, 109
Monroe, Harry	53, 81
Monypeny, William	31, 130, 142
Moreland, Virgil	68, 111
Morgan, Charles	61, 111
Mounsey, Myra	46, 76, 77, 102
Mull, Mary	46, 77
Murphy, Walter	53, 124
Murphy, William	32
Murphy, Virginia	61, 101

Mc

McAllister, Raymond	61, 78, 122, 123, 130, 132
McElhane, Venita	68
McCauley, Vernon	46, 81, 111

Personal Index---Continued

	Page
McGill, Frances.....	61, 75, 102, 121
McFarlane, David L.....	30
McManis, Dorothy.....	40
McManis, Richard.....	68, 109, 122
McNeal, Emery P.....	30
McNicholas, Adelaide.....	61, 80, 102
McSpadden, Martha, 46, 76, 77, 82, 93, 105, 117	

N

Neal, Laura.....	54, 101, 124
Newell, Myrtis.....	54, 77, 102
Newland, Roy.....	54, 107
Newlin, Audrey.....	47, 105, 124, 128
Newsom, Owena.....	61, 92, 103, 124, 133
Nicholson, Gail.....	54, 99, 124
Neibaum, Cora.....	69, 105
Niles, Mable.....	69, 105
Nininger, Edgar.....	61, 78, 130, 135, 142
Noel, Leonard.....	69, 78, 107, 130, 132
Noell, Lillie.....	61, 80, 82, 105
Norton, George.....	47, 80, 96, 111
Nossaman, Adrienne.....	69, 101
Nunnemacher, Eula.....	69
Nye, Mabel.....	69, 105, 123

O

O'Hara, Downing P.....	32
Okerberg, Wilfred.....	47, 78, 130, 132, 138, 142
Oncley, Lawrence.....	33, 112
Oncley, Paul.....	47, 73, 97, 122, 123, 125, 126
Opie, Helen.....	61, 82, 99, 124
Ossowski, Martin.....	61, 82, 99, 124
Owens, Haydn.....	39, 124

P

Pakozdi, Gene.....	69, 130
Palmer, Alice.....	69
Parker, Lelia.....	72
Parker, Lenora.....	72
Parker, Bernard.....	69, 78, 130, 132
Parish, Vivian, 47, 73, 74, 80, 82, 84, 93, 105, 124	
Parsons, Don.....	69, 107
Parsons, Irene.....	62, 105
Pence, Don.....	54, 79, 84, 96, 111, 122, 123, 124
Pennington, Frances.....	40
Peterson, Jerrold.....	69, 107
Peterson, Morris.....	47
Phillips, Marvene.....	62, 99, 125
Pierce, Ann Jo.....	47, 77
Pierpoint, Virginia.....	62, 103
Pinks, James.....	47, 109
Pishny, Marguerite.....	69, 101
Pittman, Olive.....	62, 105
Poland, Carrie.....	69, 105
Pool, Jack.....	69, 107
Porter, Gene.....	69, 111
Poundstone, William.....	33
Prather, Mary Alice.....	62, 76, 77, 101
Price, J. L.....	40
Priest, Arnold.....	62

R

Race, Helen.....	69
Radcliff, Ernest.....	69, 109, 123
Ragsdale, Paul.....	62, 94, 107

	Page
Rainbow, Mary.....	54, 80
Ruyl, Mary.....	69, 105, 124
Reed, Blanche.....	44
Reed, Dorothy.....	54
Reese, Mrs. Elma.....	40
Reese, Webster P.....	33
Reeves, Elmer.....	111
Reid, Mildred.....	62, 101, 124
Renner, Paul.....	69
Reynolds, Helen.....	62, 99, 126, 128
Richardson, Lawrence.....	54, 78, 130, 133, 141
Richardson, Royce.....	54, 112
Richardson, Sylvia.....	69
Ridings, Esther.....	70, 103
Ridings, Harvey.....	54, 112
Riggs, Ralph.....	54, 124
Rinkel, Elmer.....	62, 81, 111, 126
Roach, Martha Jean.....	70, 101
Roark, Basil.....	70, 109, 123, 124
Robertson, Vernon.....	62, 124
Robieson, Mildred.....	54
Rogers, Cornelius.....	62, 111
Roniger, Fred.....	47, 78, 97, 112, 122, 142
Ropp, Della.....	62, 99
Ross, Clemma.....	62
Ross, Naomi.....	55, 77, 105
Ross, Myrtle.....	70, 101
Rounds, Neva.....	70, 105, 123
Royer, Leslie.....	70, 111, 121

S

Sands, Forrest.....	70
Sawyer, Barbara.....	62, 99
Sawyer, Truth.....	55, 99
Scanland, Jaunita.....	70, 101
Schnackenberg, Fern.....	70, 128
Schaper, Florence.....	70
Schuermann, Loretta.....	62, 128
Seevers, Eloise.....	70, 105
Seevers, Winona.....	55, 105
Sellers, Grace.....	39
Sellers, Ida.....	40, 47, 84, 93, 105
Sette, Morris.....	70, 109
Seyb, Lawrence.....	62, 78, 111, 142
Seymour, Manford.....	70, 107
Shaler, Catherine.....	70, 99, 124
Sharp, Willa Mae.....	70, 105
Shelhamer, Elmer.....	70, 107
Shepard, Lee.....	55, 78, 82, 107, 142, 138
Shire, James.....	70, 107, 130
Sidwell, Howard.....	130, 135, 138
Simms, Mattie Mae.....	72
Simpson, Lloyd.....	47
Smalley, Grace.....	55, 92, 103
Smalley, Ruth.....	70, 103
Smiley, C. A.....	48
Smiley, Florence.....	48, 74
Smith, Adolphus.....	70
Smith, Boyd.....	70
Smith, James.....	55
Smith, Lloyd.....	55, 81, 122, 123
Smith, Rogene.....	62, 75, 101
Smith, Russell.....	70, 112
Smith, Wilda.....	55, 77, 99, 124

Personal Index---Continued

	Page
Snyder, Ruth	48, 80, 83, 115, 124
Snyder, Thelma	62, 99, 124
Spear, Lucille	62, 105, 121
Spear, Regina	71, 105
Spessard, Lloyd	71, 112
Spoon, James	63, 95, 109, 117, 124
Stanley, Pauline	71, 105
Steinberg, Merle	39, 55, 77
Steen, Maurita	62, 128
Stoelzing, Louis	55, 123, 125
Strohl, Eugene	63, 83, 84, 109, 122, 124
Strohl, Orville	48, 81, 83, 84, 95, 109, 127
Strother, Donald	63, 75, 78
Stubbs, Virginia	71, 99, 123
Stuber, Eleanor	48, 77, 90, 99
Sturm, Max	70, 109
Stutzman, Ralph C.	112, 123, 125
Sullivan, Albert	71
Swanson, Marguerite	71
Swartz, Jane	71, 102, 128
Swartz, Dan	48, 78, 97, 112, 130, 134
Swenson, Lawrence	71, 111

T

Tarber, Lois	55, 101, 121, 124
Taton, John	71, 130
Taylor, Dorothy Blackmar	34
Taylor, Henry W.	33
Taylor, Evon	63, 101
Taylor, Wm. C.	48, 109
Thomas, Evan	71
Thomas Florus	48, 91, 101
Thomas, Frances	40
Thomas, Lucille	71, 103, 123
Thompson, LaVon	48, 77
Thomson, Harold	48, 80, 84
Thomson, Leon	48, 83, 126
Tibbitts, Lucille	48, 90, 121
Tihen, Samuel	49, 97, 112
Toews, Zeanna	56, 99
Tonn, Ellen	63, 99
Torrance, Ione	71, 103, 128
Torrence, Ruth	103, 121, 128
Tretbar, Mildred	63, 82, 84, 99
Tseng, Shou Te	63, 80

V

Vance, Jack	63, 109
Vaughn, Charles	71, 102
Verbeck, Hazel	71
Vloeriman, Clara	71, 101
Vinsonhaler, Charles	63
Vinsonhaler, Edith	63, 82, 99
Vinsonhaler, C. I.	34

W

	Page
Wade, Wayne	71
Walter, Elizabeth	49, 73, 74, 82, 90, 99, 127
Walter, Jean	63, 99
Warburton, Paul	71
Ward, George	78
Ward, Gilliam	40
Ward, Viola	63, 75, 80
Ward, Violet	63
Waters, Ralph	49, 111
Watrous, Alan	49, 122, 123, 125
Watson, Effie	49, 103
Weaver, Marjorie	71, 105
Webb, Quinella	56, 105, 123, 125
Welsh, David	56, 122, 123
Wendt, Edith	63
Wentworth, Iona	56, 82, 103
White, Chalcea	34, 76, 77
Whinery, Christine	49, 91, 101, 127
Whitson, Faye Stevens	63, 124
Whitson, Milton	139
Whitwam, Rowena	56, 101, 123, 124
Wieneyer, Esther	71, 105, 124
Wilcox, Eugene	63
Wilcox, Orley	130, 132
Wilkowske, Mildred	72, 103
Williams, Maurice	78, 130, 131, 142
Willis, Edna Pearl	72, 105
Wills, Wilma	56, 92, 103
Wilson, Dean	72, 84, 111, 121, 124
Wilson, Harold	63, 112
Wilson, James	63, 112
Wilson, Rogene	72, 84, 105, 124
Wing, Lena	49, 128
Winner, Donald	56
Wood, Margaret	72
Woodell, Bernice	72, 105
Woolard, Allan	63, 78, 130, 133, 142
Woolard, Frances	49, 80
Woolard, Harold	72, 111, 121
Wright, Will T.	49, 73, 79, 96, 111, 121
Wycoff, Thelma	49, 105

Y

Yoder, Evelyn	56, 101, 124
Young, Paul	49, 96, 112
Young, Telford	63, 112, 124

Z

Zeigler, Cecil	49, 80, 81, 111
Zeigler, Margaret	72
Zeigler, Ruth	40
Zimmer, Zelma	72
Zirkle, Merritt	72, 107
Zimmerman, Beulah	72, 73, 92, 103
Zutavern, Alice	72, 99
Zutavern, Nora Ann	63, 99



WHAT A BOOK!

● Never do school annual staffs appreciate the full significance of "leadership in the printing and binding of year-books," until they actually experience the thrill of opening the first shipping case containing *their own Kraft Built* annuals. In the past eighteen years, more than 350 year-

book staffs have experienced that thrill . . . just as they have enjoyed, in the preceding months, the helpfulness of experienced, thorough, personal service. Staffs of 1932 will do well to give serious consideration to this organization, when placing their printing and binding contracts. / / / / / / /



BOTZ-HUGH STEPHENS PRESS JEFFERSON CITY
MISSOURI

Burger & Baird
OF
KANSAS CITY



MAKERS OF PERFECT PRINTING PLATES
DESIGNERS OF DISTINGUISHED YEAR BOOKS