



*The Nineteen Thirty-Four*  
**MOUNDBUILDER**

Published by the Student Body of  
Southwestern College . Winfield Kansas



**S**OUTHWESTERNERS keep alive their enthusiasm for their college by the mystic creature called the Jinx. It has created a great deal of interest in the previous years of athletic competition with Fairmount of Wichita. For years the Jinx has appeared on the eve of great battles, adding more Builder enthusiasm. The Jinx rests securely in the vaults of the college ready and waiting for another chance to appear.

*Foreword*





*Dedication*

**C**OME, Jinx, Spirit of Southwestern, carrying our beloved college into paths of victory on the field of conquest, in our scholastic pursuits, in our welding of friendships. Draw near, mysterious creature, and permit us to chat a bit of the love we have for our college and for your driving stimuli to higher and nobler endeavor unconquered either by disappointments or hardships. Continue a moment more in our presence, for it is to you, Jinx, Spirit of Southwestern, we wish to dedicate this book.





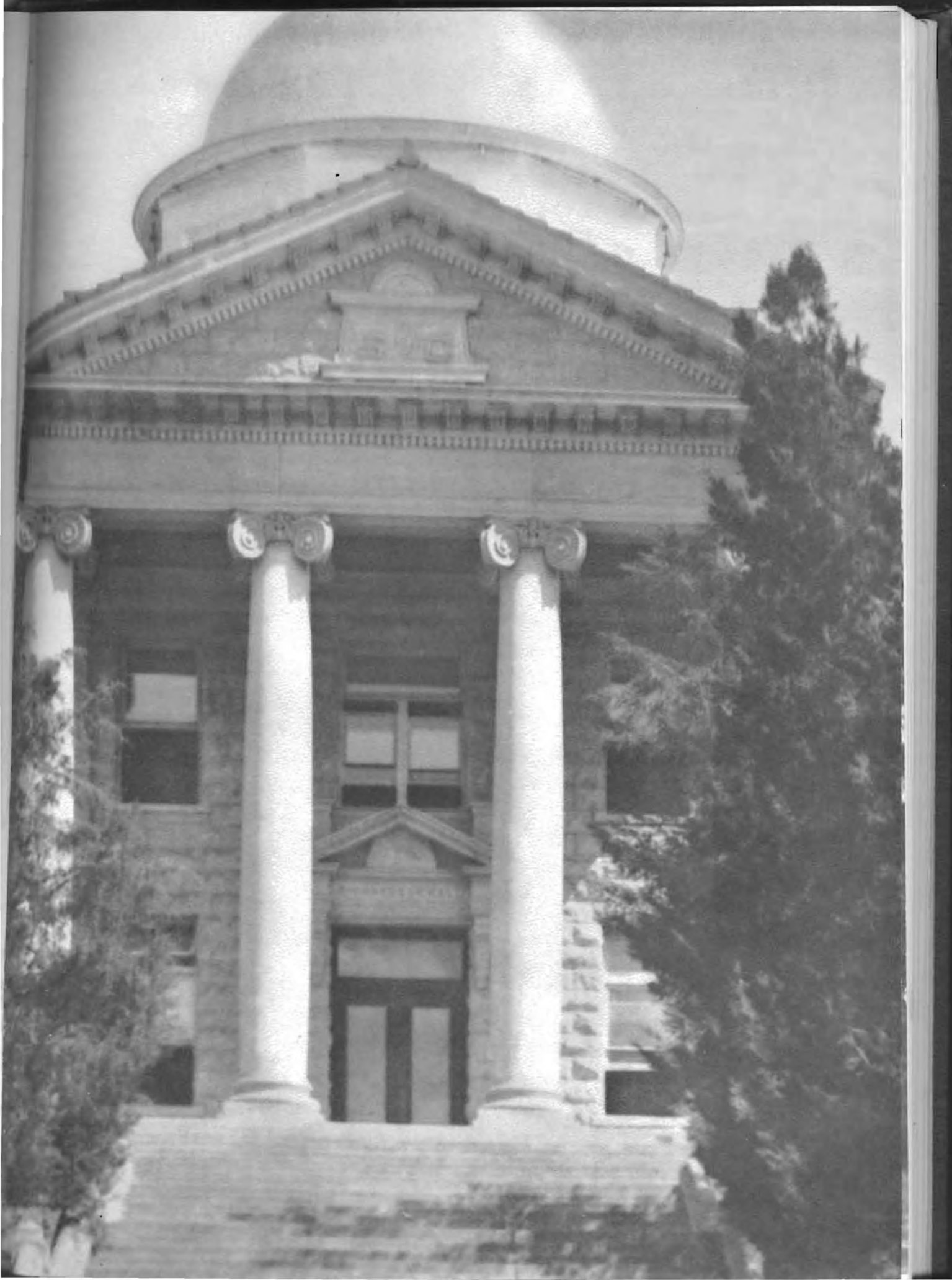
# *Contents*

## BOOKS

- I CLASSES
- II ACTIVITIES
- III ATHLETICS
- IV ORGANIZATIONS

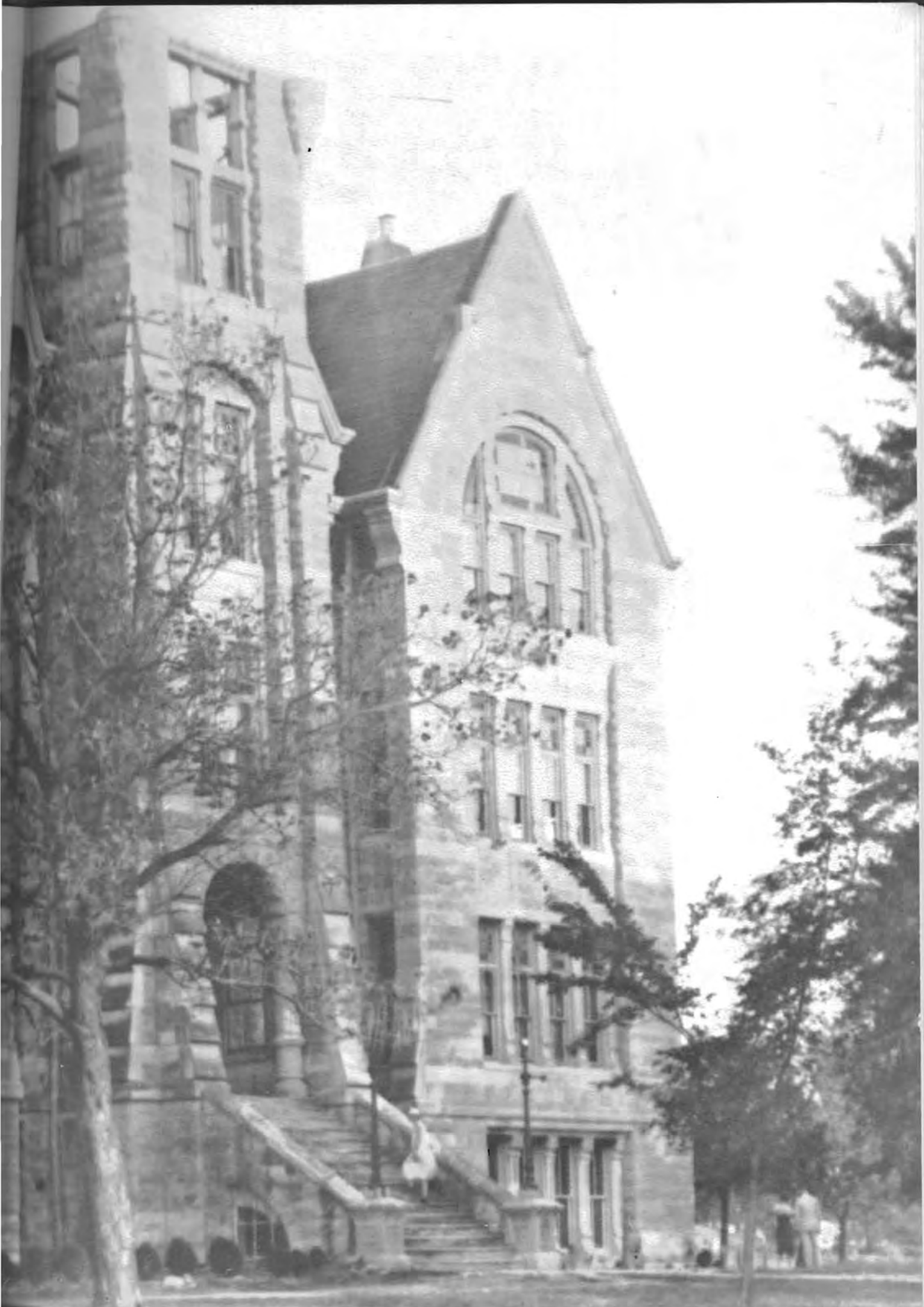








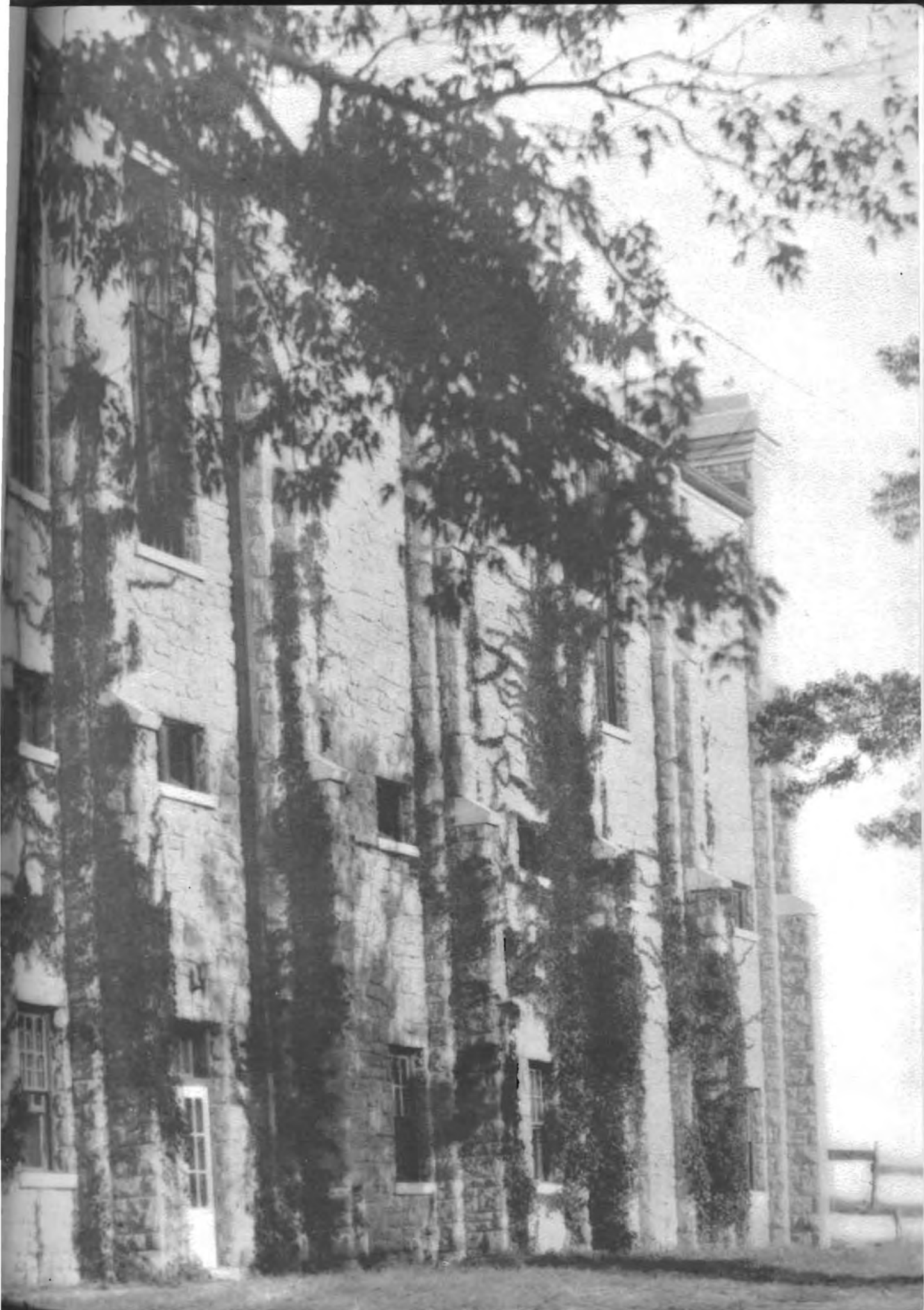
Far above the Walnut Valley,  
On a lofty height,  
Stands our noble Alma Mater,  
Bathed in golden light.





Far above the stir and bustle,  
Of the busy town,  
Reared against the arch of Heaven,  
Looks she calmly down.







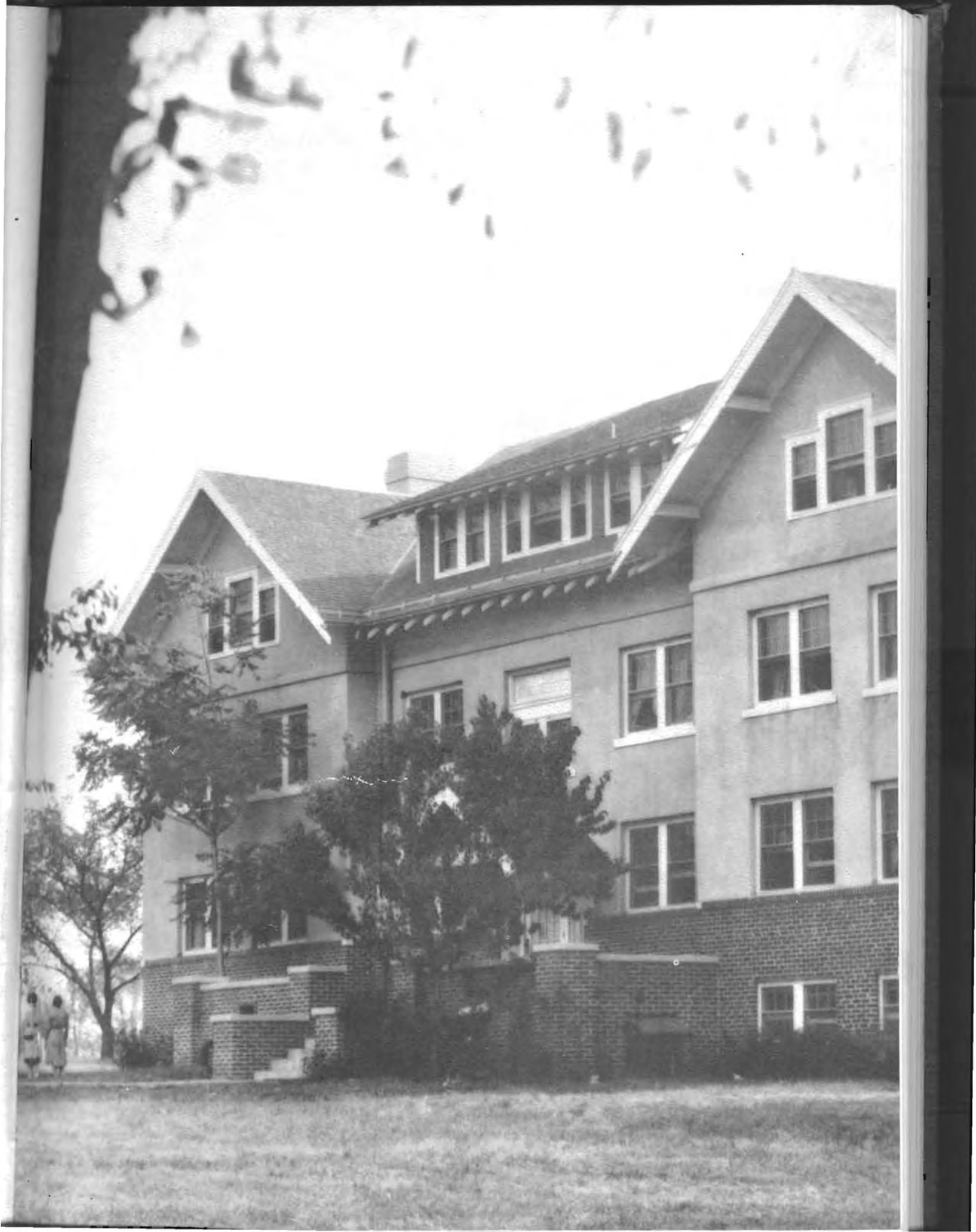


To the heights she calls us daily,

Alma Mater, dear.

Heights of knowledge, hope and  
courage,

Free from doubt and fear.



Light the chorus, speed it onward,  
Over hill and vale;  
Hail to thee, beloved Southwestern,  
Alma Mater, hail!





"Nothing has such power to broaden  
the mind as ability to investigate system-  
atically and truly all that comes under  
thy observation in life."

—Marcus Aurelius.

FACULTY



FRANK E. MOSSMAN

*President of Southwestern College*

A. B., Morningside College, 1903; A. M., Morningside College, 1905; D. D., Upper Iowa University, 1909; LL. D., Southwestern College, 1929.



"THE Spirit of the Campus"—it is a thing difficult of definition but genuinely real; the freshman senses it, the sophomore, junior and senior court and cultivate its acquaintance, the alumni weave it into their vision of Alma Mater. Depressions come and go, social standards shift, political forms change, but ever there remains that beautiful idealism which is the spirit of the campus. Four years of association with faculty members and students weave themselves into the lives of the men and women in personal companionship. Together they discuss and study systems of philosophy, seek to find the scientific method in research, and move down the aisles of time, viewing together the great personalities of history, their weaknesses and strengths; and find choice fellowship in the realization of character. The incidental problems of a day fall into the background as they view together the sweep of the years and the progress which has been made. The relationship of student to teacher, and of teacher to student, is one of admiration and respect. The Spirit of Southwestern, however, is not this; it is the result of this. It is what I am plus the envisioning of myself in what I would become. It is not stone, mortar, brick or campus. Rather, it is a beautiful and lasting ideal.

*"Hail to Thee, beloved Southwestern,  
Alma Mater, Hail!"*

FRANK E. MOSSMAN, *President.*

## The Liberal Arts Faculty



LEROY ALLEN

LEROY ALLEN  
*Dean of the College of Liberal Arts;  
Professor of Bible*

Ph. B., College of Wooster, 1906; Gradu-  
ate Xenia Theological Seminary, 1914;  
A. M., University of Chicago, 1920; S. Sc.  
D., Oklahoma City University, 1930.

MRS. H. HUGH ALTVATER  
*Instructor in German*  
A. B., University of Michigan, 1920.



MRS. H. HUGH ALTVATER



PENROSE ALBRIGHT

PENROSE ALBRIGHT  
*Professor of Physics and Chemistry*  
B. S., Renssaeler Polytechnical Insti-  
tute, 1922; M. S., University of Wiscon-  
sin, 1929.

J. THOMPSON BAKER  
*Professor of Public Speaking; Coach of  
Oratory and Debate*

B. L., Berea College, 1897; Ph. B.,  
Berea College, 1898; Ph. M., Berea Col-  
lege, 1901; Ph. D., Wooster College, 1905.



J. THOMPSON BAKER



CHARLES E. BURT

CHARLES E. BURT  
*Professor of Biological Science*

B. S., Kansas State College, 1926; M. S.,  
Kansas State College, 1927; Ph. D., Kan-  
sas State College, 1930.

EDWARD G. CORNELIUS  
*Professor of Economics and Business  
Administration*

A. B., Maryville College, 1925; A. M.,  
Vanderbilt University, 1926.



EDWARD G. CORNELIUS

LILLIAN CLOUD  
*Director of Physical Education for Women*

A. B., Southwestern College, 1921; Cer-  
tificate of Campkraft, Kellogg School of  
Physical Education, 1923.



LILLIAN CLOUD



GRACE DRESSLER

GRACE DRESSLER  
*Instructor of English and Journalism*  
A. B., Southwestern College, 1930;  
A. M., Kansas University, 1931.

ROBERT B. DUNLEVY  
*Professor of Geology*  
B. L., University of Wisconsin, 1893;  
A. M., University of Wisconsin, 1910;  
Consulting Geologist for Oil Corporations  
in the United States, 1921, 1923;  
in Italy, 1924.



ROBERT B. DUNLEVY



HELEN EVERS

HELEN EVERS  
*Instructor in Home Economics*  
A. B., Southwestern, 1929; M. S., Kan-  
sas State College, 1932.

ELEANORE HAYES  
*Professor of English*  
A. B., Southwestern College, 1894;  
A. M., University of Kansas, 1917.



ELEANORE HAYES

ADA M. HERR  
*Professor of Sociology*  
A. B., Southwestern College, 1907;  
A. M., University of Michigan, 1909.



ADA M. HERR



GENEVIEVE JOHNSON

GENEVIEVE JOHNSON  
*Instructor in Business Administration*  
A. B., Southwestern College, 1932.



DAVID L. MACFARLANE

DAVID L. MACFARLANE  
*Professor of History and Political Science;*  
*President Inter-Society Council*

A. B., Northwestern University, 1916;  
S. T. B., Garrett Biblical Institute, 1917;  
University of Edinburgh, 1928-29; Ph. D.,  
University of Edinburgh, 1931.



EMERY MCNEIL

EMERY MCNEIL  
*Acting Field Secretary*  
A. B., Southwestern College, 1922.





T. REESE MARSH

T. REESE MARSH  
*Professor of English*  
A. B., Johns Hopkins University, 1924;  
Ph. D., University of Iowa, 1933.

WILLIAM W. MONYPENY  
*Director and Coach of Athletics*  
B. S., Kansas State Teachers College  
of Emporia, 1917.



WILLIAM W. MONYPENY



DOWNING P. O'HARA

DOWNING P. O'HARA  
*Librarian*  
A. B., Southwestern College, 1925;  
A. M., University of Illinois, 1928.

LAWRENCE ONCLEY  
*Professor of Chemistry*  
A. B., DePauw University, 1907; M. S.,  
University of Chicago, 1913.



LAWRENCE ONCLEY

WEBSTER P. REESE  
*Professor of Education*

A. B., Kansas State Teachers College of Emporia, 1912; B. S., University of Missouri, 1917; M. S., University of Missouri, 1919.



WEBSTER P. REESE



ARTHUR ALVIN SMITH

ARTHUR ALVIN SMITH  
*Professor of Economics; Professor of Business Administration*

B. S., Missouri State College, 1927; M. A., Peabody College, 1929; Ph. D., Vanderbilt University, 1933.

DOROTHY BLACKMAR TAYLOR  
*Professor of Romance Languages*

A. B., University of Kansas, 1924; A. M., Columbia University, 1926; University of Paris (the Sorbonne), 1927-1928; University of Mexico, 1933.



DOROTHY BLACKMAR TAYLOR

WILLIAM J. POUNDSTONE  
*Registrar; Professor of Education; Alumni Secretary*

A. B., Southwestern College, 1910; A. M., University of Kansas, 1925.



WILLIAM J. POUNDSTONE



HENRY W. TAYLOR

HENRY W. TAYLOR  
*Associate Professor of Mathematics; Con-  
ductor Southwestern Travel Club*

A. B., College of Emporia, 1921; A. M.,  
University of Kansas, 1922; M. S., Uni-  
versity of Illinois, 1932; University of  
Mexico, 1933.



C. I. VINSONHALER

C. I. VINSONHALER  
*Associate Professor of Latin and English*

A. B., Highland College, 1911; A. M.,  
University of Kansas, 1927.



CHALCEA WHITE

CHALCEA WHITE  
*Dean of Women; Professor of Home  
Economics*

A. B., Southwestern College, 1921;  
A. M., Columbia University, 1929.

WILLIAM T. WARD  
*Acting Business Manager*  
A. B., Southwestern College, 1904;  
D. D., Southwestern College, 1922.



WILLIAM T. WARD

## Fine Arts Faculty

H. HUGH ALTVATER

*Dean of the School of Fine Arts; Professor of Violin; Director of A Cappella and String Choir*

A. B., University of Michigan, 1920; Mus. M., Southwestern College, 1925; Mus. M., University School of Music, Ann Arbor, Michigan, 1929; Pupil of G. Remy, Paris Conservatory.



H. HUGH ALTVATER



HOBART L. BARBOUR

HOBART L. BARBOUR  
*Instructor in Violoncello*

Cornell College and Southwestern College.

FRANCES AMBROSE  
*Instructor in Piano*

B. M., Southwestern College, 1931; Student of Isadore Phillippe and Marcelle Herrenschmidt, Fontainebleau, France, 1928; at Conservatoire Americaine.



FRANCES AMBROSE



CHARLES O. BROWN

CHARLES O. BROWN  
*Professor of Instrumental Music; Conductor  
of Band and Orchestra*

Mus. B., Southwestern College, 1924;  
Army Bandmaster, New York City.

E. MARIE BURDETTE  
*Instructor in Piano*

Mus. B., Winfield College of Music,  
1922; A. B., Southwestern College, 1931;  
Normal Training with Mrs. Crosby  
Adams, 1922, 1924-25, 1928, 1931; Piano  
with Isidore Philipp, Madame Dasset,  
F. Motte-Lacrois and Organ with Marcel  
Dupre, Paris, 1927, 1930.



E. MARIE BURDETTE

GRACE M. COMPTON  
*Instructor in Piano*

Mus. B., Southwestern College, 1926;  
Bush Conservatory with Richard Czer-  
wonky, 1926; Conservatoire Americaine,  
Fontainebleau, France, with G. Remy  
and M. Hewitt, 1928.



GRACE M. COMPTON

EDITH DIELMANN  
*Instructor in Expression and Dramatics*

Graduate in Expression, Southwestern  
College; also, Northwestern University;  
Pupil of Mme. Howatt, Chicago Musical  
College, O. B., 1930.



EDITH DIELMANN



FERN DIELMANN  
*Instructor in Piano*

Mus. B., Winfield College of Music, 1926; Pupil of Percy Grainger at Chicago Musical College, 1927-28; Pupil of Archibald Olmstead, Louis Victor Saar and Barton Bachmann; Piano with Dr. Paul Weingarten and music interpretation with Dr. Max Graf, Vienna, Austria, 1930.



FERN DIELMANN



HELEN GRAHAM

HELEN GRAHAM

*Professor of Expression and Dramatics*

A. B., Southwestern College, 1919; Alberti School of Expression with Madame Alberti, 1921-22; Columbia University, 1927; Northwestern University, 1929-1930.

IDA CLAWSON HUNT

*Professor of Public School Music*

Mus. B., Baker University, 1921; Beethoven Conservatory, St. Louis; University of Oklahoma and Oklahoma City University, 1929; Northwestern University, 1930; Voice Pupil of Marvin D. Geere, Eduardo Sacredote, Edgar Cook, Oscar Seagle and William Schmidt; Dunning system of Piano with Carrie Munger Long.



IDA CLAWSON HUNT

HENRY H. LOUDENBACK  
*Professor of Piano*

Graduate in Piano and Theory, Campbell University, 1902; Pupil of Mr. and Mrs. A. K. Virgil, New York; Allen Spencer of American Conservatory at Chicago; Madame Annie Bloomfield-Zeisler, Chicago; P. G. Lutkin and Arne Oldberg, Northwestern University.



HENRY H. LOUDENBACK



CORA CONN MOORHEAD

CORA CONN MOORHEAD  
*Professor of Organ and Theory of Music*

Graduate Findlay College Conservatory, 1900; Graduate of Guilmont Organ School, 1911; Pupil of Marcel Dupre in Musical Analysis and Organ; Mlle. Nadia Boulanger in Harmony, Paris, 1927.

ALLAN F. SCHIRMER  
*Professor of Voice*

A. B., Dennison University; Mus. B., Northwestern University.



ALLAN F. SCHIRMER

GRACE SELLERS  
*Instructor in Piano*

Mus. B., Southwestern College, 1927; Pupil of Oscar Torsen, H. H. Loudenback and Maurice Dumesnil.



GRACE SELLERS

MERLE STEINBERG  
*Instructor in Piano*

Graduate of Winfield School of Music, 1924; Pupil of Charlotte Rose and Archibald Olmstead; Mus. B., Southwestern College, 1929; A. B., Southwestern College, 1932; Pupil of Mr. and Mrs. Crosby Adams, Summer, 1928-29.



MERLE STEINBERG

## Administration, Assistants, Matrons



*First row: MISS ESTHER BROWN, Matron, Smith Hall; MRS. MABEL CASBURN, Matron, Holland Hall; MRS. EDNA COBB, Matron, East Hall; C. O. DETTLER, Custodian, Building and Grounds; MISS GLADYS GOSCH, Assistant Librarian; MRS. LINNIE HILDINGER, Matron, Hestwood House; MISS LOIS HILL, Secretary to Registrar.*

*Second row: MRS. HAZEL JEFFERIES, Secretary to President; MISS FERN KINDT, Secretary to Dean of Liberal Arts; MR. C. H. KITZELMAN, Superintendent of Heating Plant; MISS RUTH MARVEL, Secretary to Dean of Fine Arts; MR. J. L. PRICE, Custodian of Steward Gymnasium; MRS. ALMA REESE, Teachers' Placement Bureau; MISS FRANCES THOMAS, Secretary to Field Secretary.*

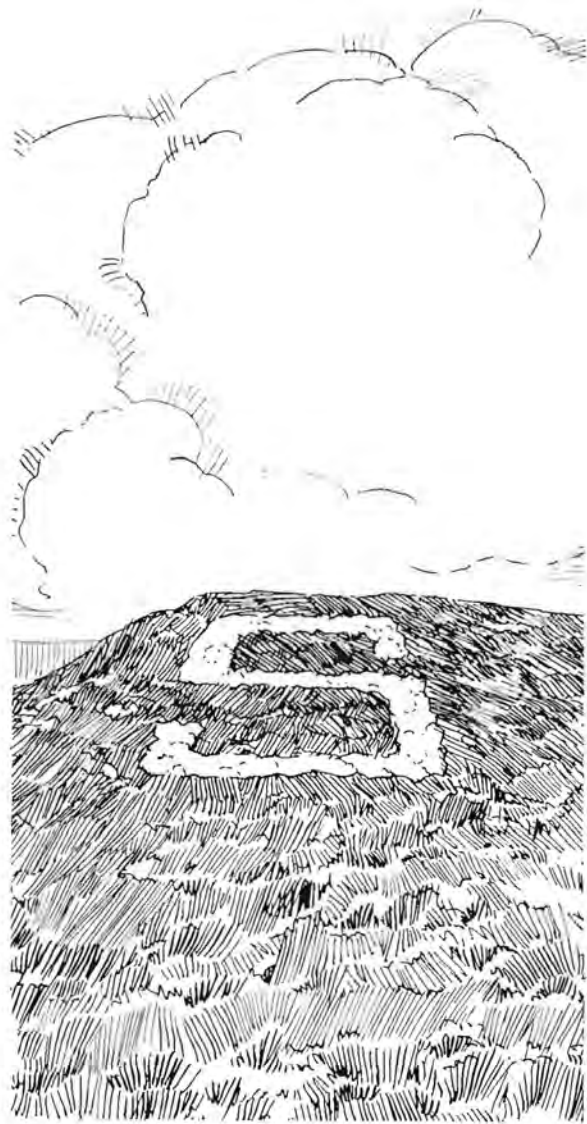




IN MEMORIAM



MRS. EDNA BOWER  
HOMER S. MYERS  
C. T. FRANKS  
E. B. CRONEMEYER  
R. A. DADISMAN









## SENIORS '33

ARNOLD, EDNA Winfield  
*Home Economics*

Kappa Omicron Phi; Gamma Omicron; Belles  
Lettres.

BARNHARDT, CLIFFORD Winfield  
*Mathematics*

Track; Band; Orchestra.

BOWLING, DOROTHEA Winfield  
*English*

BRECHNER, D. L. Florence, Colo.  
*History*

Cheer Leader.

BROWN, EVERETT Winfield  
*English and Music*

Band; String Choir; Orchestra.

BUSS, ERMA Oxford  
*History and English*

CARR, NADINA Winfield  
*History and English*

CLARK, HOMER Winfield  
*English and History*

A Cappella Choir; Campus Players.

CLOUD, LOIS Kingman  
*Public School Music*

A Cappella Choir; Sigma Pi Phi.

COE, FRANCES Coats  
*Public School Music*

String Choir; A Cappella Choir.

COOPER, LUCILE Liberal  
*English and Dramatics*

Campus Players; Gospel Team.

DAY, LAWRENCE Pretty Prairie  
*Chemistry and Biology*

Moundbuilder Business Manager '32.





## SENIORS '33

- |   |            |
|---|------------|
| DEEVER, HAROLD  | Sedgwick   |
| <i>History</i>  |            |
| A Cappella Choir; Athens; Order of Mound.                       |            |
| DIETRICK, ED  | Winfield   |
| <i>Biology</i>  |            |
| Athens.   |            |
| EDWARDS, CARROLL  | Winfield   |
| <i>English</i>  |            |
| FARRIS, BERLYN  | Wichita    |
| <i>English and Religious Education</i>                          |            |
| Gospel Team; Delphi.  |            |
| FLOOK, MILDRED  | Canton     |
| <i>English and Dramatics</i>                                    |            |
| FOOSHEE, IRENE  | Piedmont   |
| <i>Home Economics</i>   |            |
| Kappa Omicron Phi; Gamma Omicron; Sigma Pi Phi.                 |            |
| FREEMAN, CLIFTON  | Sun City   |
| <i>History</i>  |            |
| Baseball.   |            |
| GARRISON, RUTH  | Mt. Hope   |
| <i>Piano</i>  |            |
| Sigma Pi Phi; Piano Culture; Festival Chorus; A Cappella Choir. |            |
| GARTON, EDNA  | Macksville |
| <i>Piano</i>  |            |
| Sigma Pi Phi; Order of Mound.                                   |            |
| GERBOTH, CLAYTON  | Bison      |
| <i>Biology and Physical Education</i>                           |            |
| GILLOCK, RUTH   | Deerfield  |
| <i>Home Economics</i>   |            |
| Gamma Omicron; Sigma Pi Phi.                                    |            |
| GOFF, FORREST   | Hoisington |
| <i>Music</i>  |            |
| A Cappella Choir; String Choir; Delphi.                         |            |

## SENIORS '33

GOSCH, GLADYS Norwich  
*English*  
 Belles Lettres; W. A. A.

HAGAN, CARL Turon  
*Religious Education*  
 Track; Delphi.

HAGANS, JOHN Abilene  
*Philosophy*

HAMILTON, JOHN Winfield  
*History*  
 Athens.

HENDERSON, WAYNE Winfield  
*Chemistry*  
 Debate; Campus Players; Gospel Team;  
 President of Student Body; Order of Mound.

HENRY, HELEN Hutchinson  
*English*  
 Sigma Pi Phi.

HESS, HARLAN Caldwell  
*Chemistry*

HOLMES, ELZA Coldwater  
*Chemistry*  
 Order of Mound.

HUNTER, EVELYN Winfield  
*Dramatics and Public Speaking*  
 Debate; Campus Players; Sigma Pi Phi;  
 Extempore; Order of Mound.

JEN, PONG CHEH Changsha, Hunan, China  
*Chemistry*  
 Cosmopolitan Club.

JONES, VIRGINIA Winfield  
*English*  
 Sigma Pi Phi; A Cappella Choir.

KENREICH, VIRGINIA Winfield  
*Home Economics*  
 Sigma Pi Phi; Gamma Omicron; Kappa Omicron Pi.





## SENIORS '33



KITCH, CHARLES Winfield  
*Geology and History*

LEHMAN, CLAIRNELLE Deer Creek, Okla.  
*Home Economics*  
Gamma Omicron; A Cappella Choir.

LITTLE, CLIFFORD El Dorado  
*Geology*  
President Rooters Club.

MAHER, MADELINE Winfield  
*French*

MARSHALL, ARLONE Leon  
*Home Economics*  
Gamma Omicron.

MARVEL, RUTH Winfield  
*Piano*  
Order of Mound.

MCALLISTER, RAYMOND Blackwell, Okla.  
*Instrumental Music*  
Band; Football.

MATTHEWS, RUSSELL Winfield  
*English*  
String Choir; Athens.

MAURER, MELBA Winfield  
*Romance Languages*  
Belles Lettres; Y. W. C. A.

NEAL, DOROTHY Winfield  
*English*  
Belles Lettres; May Queen.

MCGILL, FRANCES Hoisington  
*English*  
Sigma Pi Phi.

MONCREIF, FRANK Winfield  
*Economics*  
Campus Players; Athens; Order of Mound.



## SENIORS '33

OVERHEM, ETHEL Winfield  
*English*

PITTMAN, OLIVE Minneola  
*Home Economics*  
Sigma Pi Phi; Gamma Omicron.

NEWLAND, HAMMOND FRANCES Winfield  
*Chemistry and Mathematics*  
Editor of Moundbuilder '32; Order of Mound.

RADFORD, ERNEST Caldwell  
*Social Science*  
Basketball; Football; Baseball.

SMALLEY, GRACE Jetmore  
*English*

SPEAR, LUCILE Wellington  
*Social Science and English*  
Leneans; Sigma Pi Phi; Order of Mound.

SNYDER, THELMA Winfield  
*Public School Music*  
A Cappella Choir; Gospel Team; Festival Chorus.

STETLER, MARGARET Wellington  
*Public School Music*  
A Cappella Choir; Festival Chorus.

SPOON, JAMES Winfield  
*History*  
Track; Band; A Cappella Choir; Athens.

STROTHER, DONALD Winfield  
*Biology*  
Business Manager of Collegian.

STUBBS, VIRGINIA Burden  
*Dramatics*  
Campus Players; Gospel Team; Debate; Belles Lettres.

TRETBAR, MILDRED Stafford  
*English and Dramatics*  
Campus Players; Belles Lettres.



## SENIORS '33



VINSONHALER, EDITH  
*French and Spanish*  
Belles Lettres; Order of Mound.

Winfield



WILSON, HAROLD  
*History*

Winfield

WIEMEYER, ESTHER  
*Public School Music*  
A Cappella Choir.

Winfield

## SENIORS '34

ALFORD, ELIZABETH Holly, Colo.  
*English and History*

Belles Lettres; Y. W. C. A. Cabinet; A Cappella; Elijah; May Queen; Vice-President Sophomore Class.

ANDERSON, BYARD Blackwell, Okla.  
*Physical Education and Biology*

Pi Sigma Phi; Football; Baseball; Intramural Sports; Assistant Coach.

ARNOLD, JOE Winfield  
*Geology and Business*

BAKER, HAROLD Winfield  
*Business Administration and Economics*  
Athens; Intramural Basketball.

BOLEY, ROBERT Leon  
*Geology and Mathematics*

BROADIE, FLORA Kinsley  
*Social Science*

Sigma Pi Phi; Debate; Pi Kappa Delta; Gospel Team; Y. W. C. A. Cabinet.

BROWN, CHARLES JR. Fort Dodge  
*Philosophy*  
Oxford Club; Gospel Team; Band; Laconia.

COOPER, DONALD Winfield  
*Business Administration and Physical Education*

CRANSTON, GEORGE Winfield  
*History*

CRAWFORD, LOREN, JR. Winfield  
*Violin and Music*

Ranger Club; Intramural Basketball; String Choir; Orchestra; Faculty String Quartette.

CROUCH, HARVEY Minneola  
*Education, Music and History*

CUNNINGHAM, LAWRENCE Potwin  
*Business Administration*  
Pi Sigma Phi; Delphi; Track.





## SENIORS '34

GRAY, CECIL St. John  
*Physical Education*

GRIFFITH, LESTER Rantoul  
*Education*

QUENTHER, LOUIS Pittsburgh, Penn.  
*Education*

HAMILTON, TOM Winfield  
*Political Economics*

Laconia; Order of the Mound; Pi Kappa Delta; Pi Gamma Mu; Debate; Oratory, Ex-tempore.

HAMM, CHET Winfield  
*English*

Athens; Pi Sigma Phi; Basketball; Intramural Board; Collegian Staff; Coach Athens Basketball.

HAMILTON, ROBERT Winfield  
*Business Administration*

HATTAN, GARLAND Mt. Hope  
*Economics*

Male Quartette; A Cappella; Band; Orchestra; Festival Chorus; Student Council; English Club.

HICKERSON, LAWRENCE Sedgwick  
*Social Science*

Delphi; Y. M. C. A.; Intramural Basketball.

HILDINGER, CLAY Winfield  
*Biology*

Pi Sigma Phi; Football; Intramural Sports.

HOYT, RAYMOND Attica  
*Business and Economics*

Delphi; Track; Football; Y. M. C. A.; Intramural Basketball.

HULL, HELEN Great Bend  
*English and Biology*

Sigma Pi Phi; String Choir; Cosmopolitan Club; Y. W. C. A. Cabinet; Orchestra; Festival Chorus; English Club; Personnel Counselor.

HUMBURG, THELMA Bison  
*Business Administration and Economics*

A Cappella; Elijah; Festival Chorus; Personnel Counselor; Moundbuilder Staff; Moundbuilder Editor; President Sophomore Class.



## SENIORS '34



JEFFERIES, ARCHIE Winfield  
*History and Social Science*  
Delphi; Track; Tennis; Intramural Basket  
Ball; Y. M. C. A.



JEFFERIES, HAZEL Winfield  
*Home Economics*  
Sigma Pi Phi; Kappa Omicron Phi; Gamma  
Omicron; Y. W. C. A.



JOHNSON, HELEN Winfield  
*Business and Economics*



JOHNSON, RUBY Bluffton, Ind.  
*English and Sociology*  
Belles Lettres; English Club; Y. W. C. A.



KIRKWOOD, ROGER Winfield  
*Economics*  
Athens; Band; Counselor; Intramural Sports;  
Y. M. C. A.; President Student Body.



KRAFT, ROBERTA Medicine Lodge  
*Music*  
Sigma Pi Phi; String Choir; Orchestra.



LONDON, MARGARET Bishops Head, Md.  
*Home Economics*  
Sigma Pi Phi; Kappa Omicron Phi; Gamma  
Omicron; President Leneans.



LANG, HAROLD Winfield  
*Geology*  
Laconia; Moundbuilder Staff; Editor Col-  
legian.



LIVERMORE, ELIZABETH Sharon, Penn.  
*English*



LOY, HAROLD Preston  
*Philosophy and English*  
Delphi; President Oxford Fellowship; Band;  
Y. M. C. A. Cabinet.



LYDICK, EDWIN Winfield  
*Mathematics and Physics*



LYNN, FRANCES Fairfax, Okla.  
*History and English*  
Belles Lettres; Campus Players; A Cappella  
Choir.



## SENIORS '34

McLAURIN, CARRANZA Langston, Okla.  
*Economics and Business*  
Cosmopolitan Club.

McMANIS, RICHARD Winfield  
*Geology*  
Athens; Band.

MESEH, MERRITT Winfield  
*Physical Education*  
Pi Sigma Phi; Basketball; Baseball; Football.

MAWDSLEY, LOIS Hutchinson  
*History*  
Y. W. C. A.; Cosmopolitan Club.

MILLER, GERALD LEE Grenola  
*Pre-Medic Biology*  
Athens; Y. M. C. A. Cabinet; Student Council;  
Band; A Cappella; Cheer Leader; Orchestra;  
Festival Chorus; Assistant Band Director; Presi-  
dent Senior Class; Business Manager Mound-  
builder; Intramural Basketball; Baseball; Presi-  
dent Rooters Club.

ODENWELLER, KEITH Winfield  
*Physics and Mathematics*  
Athens; Band; Orchestra; Inter-Society Coun-  
cil.

PALMER, ALICE Ashland  
*Sociology*  
Pi Gamma Mu.

PHILLIPS, MARAVENE Winfield  
*Home Economics*  
Belles Lettres; Order of the Mound; Kappa  
Omicron Phi; Gamma Omicron; String Choir;  
Orchestra; Senior Editor Moundbuilder.

POE, LORENE Winfield  
*Education*  
Y. W. C. A.; W. A. A.

RICHARDSON, SYLVIA Wilmore  
*Education*  
Y. W. C. A.; W. A. A.

RIDINGS, ESTHER Winfield  
*English*  
Aurora; English Club; Y. W. C. A.; W. A. A.;  
Debate.

ROUNDS, NEVA Winfield  
*Home Economics*  
Sigma Pi Phi; Kappa Omicron Phi; Gamma  
Omicron; Orchestra; Y. W. C. A.; Treasurer  
Senior Class.





## SENIORS '34

ROYER, LESLIE Valley Falls

*Chemistry*

Delphi; Order of the Mound; Pi Kappa Delta, President; Debate; Intramural Tennis.

STANLEY, PAULINE Cunningham

*English and History*

Aurora; Pi Gamma Mu; Order of the Mound; W. A. A.; English Club; Cosmopolitan Club; Personnel Counselor; President Y. W. C. A.

SWANSON, MARGUERITE Stafford

*French*

Y. W. C. A.; Elijah; Aurora.

SWARTZ, JANE Winfield

*Home Economics*

Aurora; Gamma Omicron; President Kappa Omicron Phi; W. A. A., President; Y. W. C. A.; Personnel Counselor.

THOMAS, EVAN Lamar, Colo.

*Mathematics*

Athens; Football; Intramural Sports; Sports Editor Moundbuilder; Vice-President Senior Class.

THOMAS, LUCILE Newton

*Home Economics*

Aurora; Kappa Omicron Phi; Gamma Omicron; Y. W. C. A. Cabinet.

VANCE, JACK Garden City

*Pre-Medic—Biology*

Athens.

VOIGT, HELEN Winfield

*Education*

WARBURTON, PAUL Winfield

*Education and English*

Debate; Track.

WARD, VIOLET Moscow

*Biology*

Gamma Omicron.

WATKINS, OPAL Dawn, Mo.

*Home Economics*

Sigma Pi Phi; Kappa Omicron Phi; Gamma Omicron; W. A. A.; Y. W. C. A.; Builderettes.

WEBER, MERAB Winfield

*English*

Aurora; English Club; Debate; Y. W. C. A. Cabinet.

## SENIORS '34

WEINRICH, CARL Winfield  
*Economics*  
 Athens; Band Orchestra.

WEIR, ROBERT Ness City  
*Business Administration*  
 Pi Sigma Phi; Baseball.

WHITSON, MILTON Winfield  
*History*  
 Pi Sigma Phi; Basketball; Track.

WILKOWSKE, LORRAINE Larned  
*English*  
 Aurora; W. A. A.; Festival Chorus; Piano Culture; Builderettes; Cosmopolitan Club; English Club; Pi Gamma Mu; K. K. Pep Club; Y. W. C. A.; Inter-Society Council; Assistant Instructor of Physical Education.

WILMOT WAYNE Newkirk, Okla.  
*English*  
 Athens; Intramural Basketball.

WILSON, JAMES Winfield  
*Chemistry and Mathematics*  
 Intramural Basketball.

WOOLARD, ALLAN Edna  
*Physical Education*  
 Pi Sigma Phi; Football; Baseball; Track; Intramural Sports.

WOOLARD, HAROLD Oxford  
*Business Administration and Economics*  
 Delphi; Pi Kappa Delta; Pi Gamma Mu; Y. M. C. A.; Band; Debate; Student Council.





## JUNIORS

ADAMS, MYRTLE	<i>Home Economics</i>	Oxford
BATZELL, VICTOR	<i>Biology; Education</i>	Hebron, Nebraska
BALTZELL, WILLIAM A.	<i>Education</i>	Hebron, Nebraska
BRAKEBILL, JAMES	<i>Instrumental Music</i>	Englewood
CALVERT, JAMES	<i>Business Administration; Economics</i>	Winfield
DAVIS, PAUL	<i>Business Administration</i>	Winfield
DEEVER, HAZEL	<i>English</i>	Sedgwick
DENGEY, MARY LOUISE	<i>Home Economics</i>	Winfield
EARHART, EMMA LOUISE	<i>English</i>	Winfield
EARHART, LUCILLE	<i>Music</i>	Winfield
EDMISTON, WILMA	<i>Education</i>	Towanda
EDSALL, ELDA	<i>Dramatics</i>	Bluff City
ELROD, HOWARD	<i>History; English</i>	Burden
EMMITT, THOMAS	<i>Instrumental Music</i>	Winfield
FARRAR, HOWARD	<i>Public School Music</i>	Norwich
FLAHERTY, HAZEL	<i>History; Education</i>	Cheney
FRANKLIN, FLORENCE	<i>History</i>	Rosedale, Oklahoma
FREEMAN, DOROTHY	<i>English</i>	Winfield

## JUNIORS

GARDNER, WOFFORD		Wellington
	<i>Public Speaking; History</i>	
GEESLING, RUTH		Turon
	<i>History</i>	
GUY, GEORGE		Winfield
	<i>Mathematics</i>	
HATTAN, DONALD		Mt. Hope
	<i>Mathematics; Business Administration</i>	
HENSLEY, INEZ		Dodge City
	<i>Latin</i>	
HENTHORNE, BESSIE LU		Winfield
	<i>French</i>	
HISKEY, EDITH PEARL		Colorado Springs, Colorado
	<i>English</i>	
HODGES, LILLIAN		Winfield
	<i>English; History</i>	
HOLECEK, BERNIECE		Burns
	<i>Education</i>	
HOTTON, EDWARD		Syracuse
	<i>Public School Music</i>	
HOYLE, LUTHER		Winfield
	<i>Biology; Chemistry</i>	
HUTTO, ADA LEE		Winfield
	<i>Latin</i>	
JOHNSON, ALBERTA		Blackwell
	<i>Music</i>	
JOHNSON, MAURICE VERNON		Winfield
	<i>English</i>	
KELLY, JOHN GEORGE		New Brunswick, New Jersey
	<i>History</i>	
KUNDER, THELMA RUTH		Winfield
	<i>Public School Music</i>	
ELLIOTT, LAWRENCE		Conway Springs
	<i>Business Administration</i>	
ELLIOTT, MARVIN		Plains
	<i>History</i>	





## JUNIORS

LANCASTER, GEORGE	Winfield
<i>Public Speaking</i>	
LEIGHTY, ALICE	Valley Center
<i>History</i>	
LOWTHER, BETTY	Winfield
<i>English</i>	
McCOLLUM, AUGUST	Dodge City
<i>Economics</i>	
MCLAURIN, CARDEZA	Langston, Oklahoma
<i>Physical Education</i>	
MANKA, ELLIS	Winfield
<i>History</i>	
MARTIN, CHARLES	Sevierville, Tennessee
<i>English</i>	
MILLIKEN, DON	Augusta
<i>Biology; Chemistry</i>	
MONROE, HELEN	Lyons
<i>English; Dramatics</i>	
MOORE, JOHN	Winfield
<i>Physics</i>	
MOORE, MARY DARLENE	Winfield
<i>Sociology</i>	
MORELAND, VIRGIL	Mt. Hope
<i>Business Administration</i>	
MORGAN, JOHNNIE	Winfield
<i>History</i>	
NELSON, MARCILE	Greensburg
<i>Home Economics</i>	
NOEL, LEONARD	Blackwell
<i>Physical Education</i>	
ORTEZ, REBECCA	Winfield
<i>Romance Languages</i>	
OSSOWSKI, MARTIN	Fairbury, Nebraska
<i>Physical Education</i>	
PIKE, VIVIAN	Ashland
<i>English; Dramatics</i>	



## JUNIORS

REESE, IDEN		Winfield
ROGERS, CORNELIUS	<i>History</i>	Lake City
	<i>Biology</i>	
SEASE, COYE		Winfield
	<i>English; History</i>	
SIMPSON, ALFRED		Independence
	<i>History</i>	
SMITH, CLAY J.		Cambridge
	<i>Economics</i>	
SNYDER, ANTHONY LEON		Winfield
	<i>Chemistry</i>	
SPONENBERG, LAVERNA		Winfield
	<i>Home Economics; Chemistry</i>	
STOCKING, EDWIN		Winfield
	<i>Business Administration</i>	
SWOYER, MARK		Wilmot
	<i>English; Public Speaking</i>	
TRUMBULL, MERLIN		Dodge City
	<i>Chemistry</i>	
VINETTE, DARRELL		Howard
	<i>Biology</i>	
WADE, WAYNE		Winfield
	<i>Chemistry</i>	
WARD, NEWTON		Moscow
	<i>Chemistry; Physics; Mathematics</i>	
WARREN, GERALD		Winfield
	<i>Business Administration</i>	
WEIR, MAX		Newton
	<i>History</i>	
WILLIAMS, ROSS		Wichita
	<i>Violin</i>	
WITTER, LOIS		Plains
	<i>English; Dramatics</i>	





## SOPHOMORES

- ACKERMAN, MONA, *Sedan*  
 ALEXANDER, RUTH MARIE, *Mayfield*  
 ALLEN, RUTH ELIZABETH, *Winfield*
- ALLEY, BERTA, *Oxford*  
 AYERS, CARL, *Pratt*  
 ARMOUR, ANITA, *Bentley*
- BECKER, VALETHA, *Cimarron*  
 BERRY, DARRELL, *Cullison*  
 BOLDT, EARL, *Belmont*
- BROADIE, WENDELL, *Kinsley*  
 BROOKS, HELEN, *Burden*  
 BROOKS, KENNETH, *Burden*
- BROONER, GEORGE, *Winfield*  
 BRYAN, EARL, *Cullison*  
 BUHLER, IRENE, *Pretty Prairie*
- CALVERT, RALPH, *Howard*  
 BUNCH, NIELS, *Winfield*  
 CARTER, JUANITA, *Clearwater*
- CAYWOOD, GERALD, *Winfield*  
 CLOKEY, CONSTANCE, *Winter Park, Fla.*  
 COCHRUM, MADELINE, *Winfield*
- COLE, MARJORIE, *Winfield*  
 COLLINSON, KENTON, *Winfield*  
 COWAN, ESTHER JEAN, *Felt, Okla.*
- CREGER, FRANCES, *Medicine Lodge*  
 CROWLEY, WILBUR, *Burden*  
 DAVIS, WAYNE, *Lamar*
- DOBSON, JEAN, *Winfield*  
 DUCKWORTH, HELEN, *Spivey*  
 DUNKELBERGER, WILBUR, *Belmont*

## SOPHOMORES

- DUNLAP, HELEN, *Winfield*  
 DUNLEVY, BARBARA, *Winfield*  
 EATINGER, ZELMA IRENE  
*Albuquerque, N. M.*
- ELLIOTT, DOROTHY, *Wilmot*  
 ELLIOTT, MARY ESTELLE, *Winfield*.  
 ELLIOTT, VERA MAE, *Plains*
- FABIAN, KENNETH, *Atlanta*  
 FLETCHER, WILLIAM, *Lewis*  
 FLOOK, HAZEL, *Canton*
- FRANKS, KENNETH, *Winfield*  
 FRAZER, ORVEL KENNETH, *Rolla*  
 FREEMAN, HELEN, *Dodge City*
- FREY, GEORGE JR., *Winfield*  
 GARNER, VICTOR, *St. John*  
 GOODSSELL, GNAN,  
*Colorado Springs, Colorado*
- HALE, HOWARD, *Winfield*  
 HAYSE, LEWIE, *Greensburg*  
 HICKS, OFAL, *Winfield*
- HINK, VIOLA, *Englewood*  
 HODGES, WILLFRED, *Greensburg*  
 HOLLAND, RICHARD, *Pratt*
- HORNISH, MILDRED, *Bucklin*  
 JOHNSON, ELEANOR, *Copeland*  
 JOHNSON, LE NORA, *Galva*
- JOHNSTON, JEAN, *Norwich*  
 KAUFMAN, KENNETH, *Kingman*  
 KELLEY, HARRIET, *Winfield*
- LANDON, LUCY, *Bishops Head, Md.*  
 LEVICK, ANNA, *Winfield*  
 MCKNIGHT, VIRGINIA, *Oxford*





## SOPHOMORES

McMANUS, MARTHA JANE, *Bartlesville, Okla.*

MAHER, PAT, *Winfield*

MARSHALL, RUTH ETTA, *Leon*

MILLIKEN, MAURICE, *Augusta*

MONROE, ELMA, *Lyons*

MOORE, MARGUERITE, *Pratt*

MOSSMAN, CLAYTON, *Omaha, Neb.*

MOSSMAN, HOMER, *Winfield*

MUHLENBRUCH, CLIFFORD, *Argonia*

NILES, LOIS, *Copeland*

ODENWELLER, ANNA BETH, *Winfield*

ORMES, BURNITA, *Caldwell*

OVEREEM, RAY, *Winfield*

PAGE, RAYMOND, *Leon*

PARKER, ELLINOR, *Hugoton*

PARKER, LENORA, *Trousdale*

PINKS, ROBERT, *Winfield*

PITTMAN, MARJORIE, *Minneola*

POMEROY, DALE, *Hugoton*

PRIEST, ARNOLD, *Newton*

REITZ, MAXINE, *Belle Plaine*

RICHARDSON, RITA, *Wilmore*

ROSALES, JOSE, *Newton*

SCOTT, HARRIET, *Winfield*

SHAVER, LUCILLE, *Winfield*

SHAW, MARY ELLEN, *Roswell, N. M.*

SHOCKEY, SAVINAH, *Winfield*

SPONENBERG, VICTOR, *Winfield*

STATELER, MILDRED, *Minneola*

STEIGER, HARVEY, *Menlo*

## SOPHOMORES AND SECOND SEMESTER STUDENTS

STITT, VELVA, *Liberal*

URBAN, IRA JOE, *Cullison*

VIELE, LOIS, *Caldwell*

VIELE, MAXINE, *Caldwell*

WATKINS, KENNETH, *Winfield*

WELFELT, KATHERINE, *Winfield*

WOLZ, KATHERYN, *Blackwell, Okla.*

WOODARD, MARTHA, *Wichita*

WRIGHT, RUFUS, *Adair, Okla.*

WOOLARD, MAURINE, *Oxford*

YERGLER, JOHN, *Clearwaer*

YOULE, LOUISE, *Winfield*

ZERGER, CARL, *Basil*

ZERGER, WALDO, *Basil*

TOMBAUGH, CHARLES, *Burdett*

BELT, EVELYN, *Winfield*

BELT, LESTER, *Winfield*

GIBSON, RICHARD, *Winfield*

WILSON, JUANITA, *Wichita*

KRALICEK, DAISY, *Caldwell*

STOCKING, GLENNA, *Mayfield*

STUTZMAN, HARRIET, *Winfield*

WILSON, KATHERINE, *Jelmore*

YOUNT, FREEMAN, *Ponca City, Okla.*

GERBOTH, CLAYTON, *Winfield*

RINKEL, ELMER, *Haviland*

JENKINS, RUTH, *Smith Center*

HOTTON, NABIAH, *Syracuse*

THOMPSON, MARJORIE, *Winfield*

KING, RALPH, *Haviland*





## FRESHMEN

- AHLERICKS, DEWITT, *Winfield*  
 AICHER, EDWARD, *Winfield*  
 ALLEN, DAVID, *Kansas City, Mo.*
- ARINGDALE, LAMAR, *Winfield*  
 AULTMAN, DORIS, *Macksville*  
 AVARY, DONNA BELLE, *Larned*
- CRANE-AYERS, MILDRED, *Oklahoma City, Okla.*  
 BALTZELL, ROBERT, *Hebron, Neb.*  
 BARBOUR, JEANETTE, *Wellington*
- BENNETT, ALLENE, *Winfield*  
 BLAIR, FLORA ALICE, *Caldwell*  
 BLOOMFIELD, DORIS, *Winfield*
- BRANSON, JEAN, *Winfield*  
 BRIDGEWATER, IRIS, *Beaver, Okla.*  
 BROWN, BOB, *Winfield*
- BROWN, CLARON, *Junction City*  
 BURDEN, ROBERT, *Burden*  
 CADWELL, CARL, *Sedgwick*
- CALVIN, CARRIE, *Winfield*  
 CLEGHORN, HAROLD, *Copeland*  
 COCHRAN, GENEVIEVE, *Winfield*
- COLBORN, JEAN, *Winfield*  
 COTTOM, BLANCHE, *Winfield*  
 COWAN, LEONARD, *Felt, Okla.*
- CUNNINGHAM, KEDRIC, *Hunnewell*  
 CURTISS, CHARLES, *Beeler*  
 DAVIDSON, ROBERT, *Wichita*
- DEAL, LAVERNE, *Sawyer*  
 DEEVER, MERWIN, *Sedgwick*  
 DICKERSON, AVERY, *Neponset, Ill.*



## FRESHMEN

DOTY, MAXINE, *Caldwell*  
 EDGELL, VICTOR, *Syracuse*  
 EDWARDS, RUTH, *Meade*

ELLIOTT, HARRIETT, *Plains*  
 ESLINGER, ELIZABETH, *Kinsley*  
 FARMER, RICHARD, *Pratt*

FELT, ALBERT, *Wellington*  
 FLICKNER, LAWRENCE, *Chicago, Ill.*  
 FLOOK, GEORGIA, *Canton*

FLOYD, VELDA, *Argonia*  
 FOULK, CLIFFORD, *Turon*  
 FROEMMING, VERYL, *Winfield*

GARRISON, MIRIAM, *Attica*  
 GILMORE, MAXINE, *Barlesville, Okla.*  
 GRAY, HOWARD, *Elkhart*

GREENWAY, RAYMOND, *Elkhart*  
 HALL, ROGER, *Winfield*  
 HARBAUGH, MONROE, *Protection*

HEITMEYER, WILMA, *Hugoton*  
 HENDERSON, RAYMOND, *Peabody*  
 HILDINGER, MARTHA, *Winfield*

HODGE, WESLEY, *Liberal*  
 HOLT, DWIGHT, *Winfield*  
 HOYLE, EMMA, *Winfield*

HUBBARD, GRETCHEN, *Hugoton*  
 HUGHES, WENDELL, *Florence*  
 INGRAM, JAMES, *Spivey*

JOHNSON, STEVEN, *Copeland*  
 JONES, DAVID, *Ashland*  
 JONES, EOLIN, *Winfield*





## FRESHMEN

JONES, LEO, *Johnson*

JONES, SYLVA, *Roswell, N. M.*

JONES, WINIFRED, *Winfield*

KING, MELVIN, *LaJunta, Colorado*

LAKE, WENDELL, *Lake City*

LAMAR, WILLIAM, *Oxford*

LANDON, CHARLOTTE, *Bishops Head, Md.*

LAWRENCE, MARJORIE, *Halstead*

LAWSON, EILEEN, *Penalosa*

LEHMAN, JAMES, *Deer Creek, Okla.*

LE MARR, CELESTA, *Braman, Okla.*

LENT, FRANCES, *Johnson*

LEWIS, WAYNE, *Isabel*

LITTLE, FRANCES, *Wichita*

LOOKER, CARL, *Oxford*

LOWE, LOIS FAITH, *Hutchinson*

LOWTHER, BEN, *Winfield*

MCBRIDE, PAULINE, *Mayfield*

MCCLAREN, DOROTHY, *Lewis*

McKNIGHT, BUSTER, *Oxford*

McLAURIN, DUNBAR, *Langston, Okla.*

McSPADDEN, LORENE, *Moline*

MAJOR, GEORGE, *Valley Center*

MANNY, GENE, *Winfield*

MARINE, DONALD, *Copeland*

MATLACK, HARLEY, *Burrton*

MATTHEWS, MARIAN, *Bucklin*

MATTHEWS, LOREN, *Winfield*

MEEKER, RUTH, *Winfield*

MILLER, DORIS, *Burns*

## FRESHMEN

MILLER, LOWELL, *Burns*

MILLIKEN, CLEO, *Augusta*

MOORE, LERETTA, *Guthrie, Okla.*

MOORE, VIRGINIA, *Wellington*

MORRIS, HELEN, *Hugoton*

NASH, FORREST, *Winfield*

NORBY, MARIAN, *Cullison*

OSTERHOLT, DONALD, *Winfield*

PEACOCK, LUCRETIA, *Elkhart*

PECK, HORTENSE, *Florence*

PHILLIPS, CLEO, *Winfield*

PIKE, MILDRED, *Ashland*

POE, VELMA, *Winfield*

PORTER, BILL, *Winfield*

PORTER, EDITH, *Anness*

PORTH, EDNA, *Winfield*

RAMSEY, JUANITA, *Bentley*

RAYPHOLTZ, BEULAH, *South Haven*

REECE, WENDELL, *Oxford*

REID, DWAIN, *Winfield*

RHORER, GEORGE, *Lewis*

RICHARDSON, WESLEY, *Erie*

ROBERTSON, JACK, *Oxford*

ROBERTSON, WILLA, *Valley Center*

ROBINSON, GEORGE, *Winfield*

ROHL, FRANCES, *Caldwell*

ROSE, KENNETH, *Winfield*

SCHIEFFELBINE, LEONARD, *Norwich*

SEWELL, DEAN, *Pratt*

SKILES, AVERILL, *Conway Springs*





## FRESHMEN AND SECOND SEMESTER STUDENTS

SMITH, INEZ, *Coyle, Okla.*

SNEED, MARVIN, *Winfield*

SNYDER, PAULINE, *Winfield*

STAATS, DEAN, *Copeland*

STOCKING, MILTON, *Winfield*

STOUT, KATHRYN, *Winfield*

STUBER, ESTHER, *Winfield*

STUBER, LOVELL, *Winfield*

STUBER, VIRGINIA, *Winfield*

STUDE, LAWRENCE, *Copeland*

SUITS, SHIRLEY ROSE, *Bartlesville, Okla.*

SYEKS, DOLORES, *Wellington*

TAGGART, LARMAN, *Boise City, Okla.*

TRILES, PAUL, *Winfield*

TURPIN, GERTRUDE, *Winfield*

VOLLWEIDER, IRENE, *Oxford*

WADE, WAYNE, *Winfield*

WEEKS, RUTH, *Wichita*

WHITE, MIRIAM, *Bartlesville, Okla.*

WILMER, JOSEPHINE, *Winfield*

WILMOTH, DENZIL, *Beaver, Okla.*

WILSON, PAUL, *Winfield*

WIMBERLY, EMMA, *Kinsley*

YOUNG, GEORGIA, *Langston, Okla.*

YOUNG, GLEE, *Pretty Prairie*

ZIMMERMAN, LEWIS, *Lamont, Okla.*

AINSWORTH, GLENN, *Argonia*

COOK, FERNANDO, *Winfield*

Special

GILLOCK, MILDRED, *Deerfield*

Second Semester

STUTZMAN, CARL, *Winfield*

Second Semester

## SECOND SEMESTER STUDENTS

HOWARD, EMMA, *Winfield*

DOWERS, URAL, *Oxford*

DOWERS, ALLEN, *Oxford*



LEE, BUDGE, *Winfield*

HART, MARIAN, *Winfield*

HOWARD, ROBERT, *Winfield*



EHNKE, MILDRED, *Winfield*

COOPER, HAL, *Winfield*

JOHNSON, ESTHER, *Dodge City*



BROWN, MARION, *Harper*

PATON, LOVINA, *Oxford*

CURRY, ROYAL, *Newkirk, Okla.*



BOGGS, CECILE, *Oxford*

MARCELL, LEARNED, *Oxford*

KNOWLTON, MAXINE, *Oxford*



SHELTON, ARLOE, *Argonia*

DRESSLER, MABLE, *Winfield*

CALLISON, ERNEST, *Norwich*



VOLLMERT, TEMPLE, *Pampa, Texas*

WISE, WINONA, *Penalosa*

WOODARD, BERNARD, *Winfield*



ANTRIM, PHIL, *Spivey*

ANTRIM, RAYMOND, *Spivey*

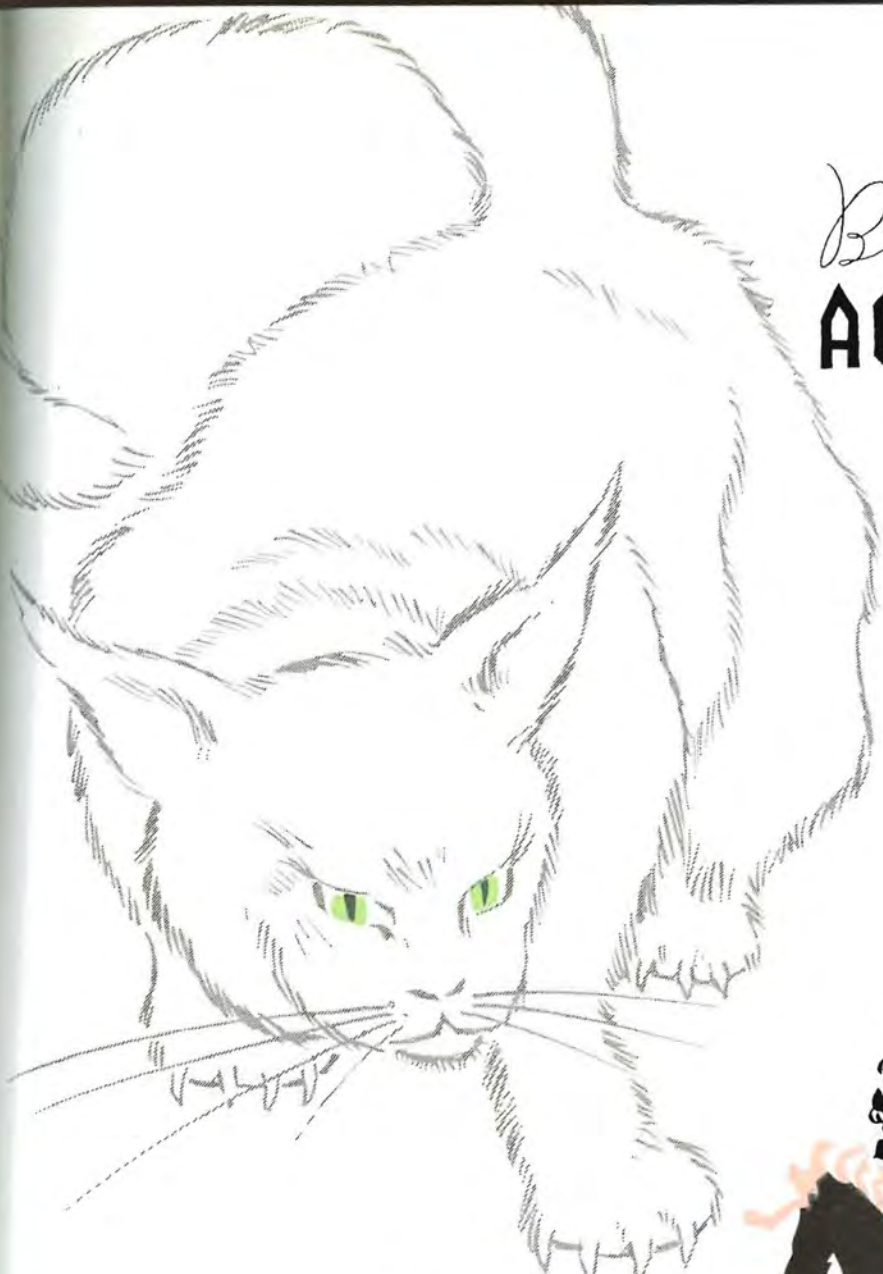
BOWLING, ERNESTINE, *Winfield*







*Book Two*  
**ACTIVITIES**





## Order of Mound, 1933 and 1934

THE Order of the Mound was established in 1917 for the purpose of giving recognition to those students who had maintained a high scholastic record. At the close of the first semester, from ten to twelve per cent of the highest ranking seniors of each school, the Liberals and the Fine Arts, is elected to membership by the faculty. Those who have not had seventy-five hours of residence work are not eligible to membership. At the final chapel the new members are presented with an "Order of the Mound" key similar to the Phi Beta Kappa Key.

Those elected to the Order of the Mound for 1933 are as follows:

DEEVER, HAROLD	MARVEL, RUTH
HENDERSON, WAYNE	MONCRIEF, FRANK
HOLMES, ELZA	NEWLAND, FRANCES
HUNTER, EVELYN	SPEAR, LUCILE
VINSONHALER, EDITH	

Those elected to the Order of the Mound for 1934 are as follows:

COE, FRANCIS	GLECKLER, DONALD
CRAWFORD, JUNIOR	HAMILTON, TOM
FORCE, HELEN	ROYER, LESTER
GARTON, EDNA	PHILLIPS, MARAVENE
STANLEY, PAULINE	



COE	CRAWFORD	DEEVER	FORCE	GARTON	GLECKLER
HAMILTON	HENDERSON	HOLMES	HUNTER	ROYER	MARVEL
MONCRIEF	NEWLAND	PHILLIPS	SPEAR	STANLEY	VINSONHALER

## Student Council



KIRKWOOD, BLAIR, BROADIE, BROWN, DAVIS, ELLIOTT, FLAHERTY, FLICKNER, FLOOK, FOULK  
GLECKLER, HATTAN, KELLY, LOWTHER, MILLER, J. MOORE, M. MOORE, MORELAND, MOSSMAN,  
MCKNIGHT  
PAGE, M. PIKE, V. PIKE, PORTER, SEWELL, SWOVER, TRUMBULL, URBAN, WARREN, WATKINS,  
WITTER

**C**ONTINUING to prove herself a powerful and capable governing body for students, the Southwestern Student Council served well as the nucleus for democratic student opinion and action. The council is composed of four members and two alternates from each of the four classes and is organized to promote constructive school spirit, to develop harmonious relations between faculty and student organizations, and to provide a representative group to take the initiative in all student enterprises.

The Student Council of this year upheld a policy of "Less restriction and regulation on upperclass students in scholastic and social activities." The Council was partly responsible for the movement toward a revised class attendance system which was begun by the faculty in an experimental way. In administering the student activity funds, the Council successfully supervised the new budgetary system for each department.

Other significant accomplishments were: Sponsoring the President's Club dinner in the fall, promoting an all-school party and annual Hobo Day, sponsoring worthwhile student assemblies and pep rallies, and developing the Student Union.

Members of the Executive Committee of the Student Council:

*First Semester:* Roger Kirkwood, President; Merlin Trumbull, Vice-President; Gerald Warren, Finance Chairman; Helen Monroe, Social Chairman; Don Gleckler, Chapel Chairman.

*Second Semester:* Roger Kirkwood, President; Virgil Moreland, Vice-President; Gerald Warren, Finance Chairman; Garland Hattan, Social Chairman; Don Gleckler, Chapel Chairman.

## Inter-Society Council



BROADIE    BROWN    ELLIOTT    FLAHERTY    FLOOK    FOULK    HAMILTON  
 HENSLEY    LOWTHER    MOORE    MORELAND    A. ODENWELLER    K. ODENWELLER  
 PAGE    SNYDER    SPOON    STANLEY    WARREN    WILKOWSKE    WITER

**T**HE Inter-Society Council was organized in 1923 for the purpose of promoting friendship, regulating rush and pledge activities, and settling all society problems.

This year the Council sponsored the organizing of a new society, the Aurora Laconian, which was formed from members of the old societies.

Friendly competition is promoted each year by the sponsoring of the Little Theatre Plays, which are given by each society each semester.

The Council is composed of two members from each society, the president and a representative, and a president which is chosen each year. Dr. D. L. MacFarlane has been elected president of the Council ever since its organization.







## The Collegian



SWOYER  
WEIR

ELROD  
FREY

HAMM  
GOODSELL

LANG  
HICKS

UNDER the careful business managership of Mark Swoyer, The Southwestern Collegian returned to weekly issues this year after being published bi-weekly last. A new set-up was used with editors being selected from the journalism classes for six-weeks intervals, rather than one student editing the paper throughout the year. Chet Hamm, Howard Elrod, Max Weir, Harold Lang, George Frey were the editors for the first five periods, and Opal Hicks and Gnan Goodsell were joint editors for the sixth. Practically all the work of editing and reporting was done by the class in beginning journalism.

## Cosmopolitan Club



ADAMS, COCKRAN, COTTON, DEN, EBRIGHT, EDWARDS, ELLIOTT, ESTER, FARRAR, FREEMAN  
HOLLAND, HULL, JOHNSON, JONES, LAWRENCE, MAWDSLEY, MOORE, MOSSMAN, C. McLAURIN,  
C. McLAURIN

D. McLAURIN, ORTIZ, ROSALES, SHAW, SMITH, STANLEY, STITT, WEIR, WILKOWSKA, YOUNG

## A Cappella Choir



1933

*Back row:* STROHL, WILLIAMS, TRUMBULL, HAYSE, AMES, HOTTON, GLECKLER, ESTER, REESE, POMEROY, HALE, ROBERTSON, CLARK, STUTZMAN, VINETTE, STOCKING  
*Third row:* VIELE, PARKER, REITZ, DOTY, MILLIKEN, H. DEEVER, MILLER, FARRAR, SPOON, LYNN, VIELE, V. ELLIOTT, PENNINGTON  
*Second row:* WILSON, D. ELLIOTT, GRESHMAN, JONES, SNYDER, AINSWORTH, EMMITT, DAVIS, NEAL, AMBROSE, ODENWELLER, FISHER, COMPTON  
*Front row:* PISHNY, CLOUD, GILBERT, RAYL, LEHMAN, MONROE, ALTVATER, LEIGHTY, WIEMEYER, BROOKS, H. MILLER, STETLER, SHAW



1934

*Back row:* ALBRECHT, EDGELL, M. STOCKING, WILLIAMS, HAYSE, GLECKLER, REESE, L. MILLER, FLICKNER, POMEROY, HALE, HENDERSON, MARTIN, STOCKING, BURDEN, STUTZMAN  
*Third row:* LEIGHTY, A. JOHNSON, ESLINGER, REITZ, V. MOORE, SKILES, HATTAN, DAVIDSON, FARRAR, VIELE, KUNDER, McCLAREN, SHAW, M. WHITE  
*Second row:* MILLER, LENT, LOWE, STATELER, LeMARR, EMMITT, DAVIS, HATTAN, MARVEL, WILFELT, ELLIOTT, ALFORD, BARBOUR  
*Front row:* MORRIS, FREEMAN, SACER, GILBERT, DEEVER, PARKER, ALTVATER, VIELE, DUNLAP, BROOKS, MARSHALL, ODENWELLER, P. SNYDER

## The String Choir



**E**NTERING its thirteenth year of activity, the String Choir has a fine reputation in the Middle West. A tour of considerable proportions is conducted each year. Its high standards of musicianship are the result of the efforts of its originator and director, Dean H. Hugh Altvater.

## The Symphony Orchestra



**D**URING the past year the Southwestern College Symphony Orchestra, under the baton of Professor C. O. Brown, has attained new heights in its readings of major symphonic works in addition to playing an important part in the success of the annual presentation of the "Elijah."

## Gamma Omicron



ADAMS, ARMOUR, DUNGEY, EVERS, FLOOK, JEFFERIES, KELLY  
 LANDON, MONROE, MERRILL, NELSON, PHILLIPS, ROUNDS, SPONENBERG  
 SWARTZ, THOMAS, VEILE, WARD, WATKINS, DEAN WHITE

**G**AMMA OMICRON is an honorary organization for Home Economics majors. It was organized in October, 1921, for the purpose of giving training in poise and leadership. The members are selected from the Sophomore, Junior, and Senior Classes on the basis of scholastic achievement.

## Kappa Omicron Phi



EVERS, JEFFERIES, MERRILL, PHILLIPS  
 ROUNDS, SWARTZ, THOMAS, WATKINS, WHITE

**T**HE Mu Chapter of Kappa Omicron Phi, National Honorary Professional Fraternity for Home Economic majors, was organized in May, 1929. Its members are selected on the basis of scholarship, initiative, leadership, and personality for the purpose of developing women with higher ideals of sane living, with a deeper appreciation of the sanctity of the American Home. The pledges for the past semester are: Harriett Kelly, Dorothy Elliott, Anita Armour, and Hazel Flook.

## K. K. Pep Club



COLBORN, FLAHERTY, FLOOK, HENSLEY, LEMORR, MONROE, MOORE  
MORRIS, PEACOCK, M. PIKE, V. PIKE, STATELER, WILKOWSKE, WILMER

**T**HE K. K. Pep Club was organized in 1928 by fourteen spirited girls who felt the need of a recognized pep group. The club proposes to create friendliness among girls and to sustain interest in pep throughout the student body.

## Builderettes



ADAMS, ARMOUR, FLOOK, FLAHERTY, HODGES, HENTHORNE, MCKNIGHT  
NELSON, SPONENBERG, STANLEY, STITT, SWARTZ, WATKINS, WILKOWSKE, CLOUD

**T**HE Builderettes, honorary athletic organization under the auspices of the W. A. A., has as its purpose the promotion of physical efficiency and interest in athletics for girls, and is open for membership to those who have won special distinction in physical activities.



## Pi Kappa Delta



ALLEN, BAKER, BLAIR, BUHLER, BROADIE, GARDNER, GILMORE  
GLECKLER, HUGHES, C. MOSSMAN, H. MOSSMAN, M. PIKE, V. PIKE, ROSALES  
SMITH, WARREN, WEBER, WILSON, WIMBERLY, WITTER, WOODARD

**P**I KAPPA DELTA sponsors all Forensics. Southwestern placed first again in State Contests last year. One hundred and thirty-two debates with thirty-eight different colleges was the year's record. Our debate coach is head of both the State Oratorical and Debate Associations. A full delegation goes to the National P. K. D. at Lexington, Kentucky this year.

## Pi Gamma Mu



ALLEN, BAKER, CHUBB, CORNELIUS, EVERS, GOSCH, HAMILTON  
HERR, LOWTHER, MACFARLANE, MERRILL, MOORE, MOSSMAN, O'HARA, PALMER  
PIKE, POUNDSTONE, REESE, STANLEY, VINSONHALER, WARREN, WHITE, WILKOWSKE



## Quartet



DAVIS      HOTTON      REESE      POMEROY      Pianist G. HATTAN

THE Quartet, one of the most popular organizations on the campus was in demand by the churches of the conference nearly every week-end, and a week's trip carried them through Western Kansas and Northern Oklahoma. The group is said by many critics to be one of the best in the state. This is the second year that these boys have sung together.

## Y. M. C. A.



DR. MARSH, *Sponsor*; EBRIGHT, CRANSTON, FARARR, STOCKING  
SNYDER, MOSSMAN, KIRKWOOD, SIMPSON, C. BROWN, FRANKS

THE Y. M. C. A. has held regular meetings every Wednesday night at the home of Dr. T. Reese Marsh, discussing problems of social and religious importance. The Y. M. C. A., in co-operation with the Y. W. C. A. has taken charge of the student union; we have brought Dr. Roy Burt to the campus for three days in February; and we have had a morning watch every Tuesday morning. The Y. M. C. A. Basketball Team lead in the Intramurals.

## Campus Players



**D**RAMATIC activity on Southwestern reaches its climax in the Campus Players productions, and membership in the organization itself is the most cherished achievement of students of dramatic art. The personnel of the group is selected after preliminary tests in Society and Little Theater plays, and full membership is attained only after a period of probationary service.

The fall production in 1932 was "Holiday," a modern comedy by Philip Barry. It was in this performance that Helen Force, president, and George Lancaster, business manager, gained admission. "She Stoops to Conquer," Oliver Goldsmith's rollicking comedy, was given to close the annual May Fete.

This year the Campus Players again delighted their audience with comedy, choosing St. John Erwin's "Mary, Mary, Quite Contrary." A side trip served as a new project for the organization, when the play was presented as a number of the Cedarvale Lyceum Course.

Miss Helen Graham is sponsor of the group and director of all productions.



HELEN GRAHAM, *Director*  
WARREN

LANCASTER  
V. PIKE

FORCE  
C. MOSSMAN

COLLINSON  
LYNN



## Personnel Department



ARMOUR, BROADIE, BROOKS, C. BROWN, CLOUD, EBRIGHT, FARRAR, FLAHERTY, FLOOK, FRANKS  
GARDNER, HULL, HUMBURG, KIRKWOOD, LOWTHER, LOY, MARSH, MORELAND, MOSSMAN, I. REESE  
W. REESE, SNYDER, STANLEY, SWARTZ, SWOYER, THOMAS, WHITE, WITTER

*Faculty Council:* DEAN WEBSTER P. REESE, DEAN CHALCEA WHITE, DR. T. REESE MARSH,  
MISS LILLIAN CLOUD

THE Student Personnel Department in Southwestern College, under the direction of Dean Webster P. Reese, was carefully planned and organized in the spring of 1933, and was put into actual operation with the opening of the college the following fall. It is composed of a council of faculty members, assisted by twenty-four upperclass students, who serve as counselors of specified groups of students, especially of freshmen.

The purpose which dominated the organization of the department and which has guided its activities was to render the greatest possible service to students in developing well-rounded personalities. The effort of the director and his staff, therefore, has been operative in three fields of personality development—the educational, the social, and the spiritual. The orientation of the new students, the proper housing of all the students, the social and religious life of the college community, educational and vocational guidance, placement service, personnel records and the students' personal problems—each of these interests has claimed the close attention of the department.

The work and activities of the Personnel Department are, perforce, carried on quietly and unobtrusively, but the effects are subtle and far-reaching. The accomplishments of the first year have far surpassed the hopes of the director and the council. Now that the ground is well prepared, the harvest of the future years should be great.

## Band



KIRKWOOD, REID, PINKS, ROSE, ZIRKLE, ODENWELLER  
HODGES, BURDEN, McCLAREN, DAVIDSON, HATTAN  
HUBBARD, MANNY, STUTZMAN, STROHL, STOCKING  
FUNSTON, MATTHEWS, VINSONHALER, JONES, REESE, MUHLENBRUCH, CUNNINGHAM  
WEINRICH, SPOON, REECE, WOOLARD, BARNHARDT, ROBINSON, NASH, MILLER, LEHMAN

**U**NDER the competent baton of Professor C. O. Brown, the Southwestern College Band of 35 pieces has attained a reputable standing among the College bands of this section.

The band is one of the most active organizations on the campus, appearing in uniform at every grid-iron fray and basketball game, where it has been a stimulator of pep and enthusiasm.

At various times throughout the year the band has given concerts in our chapel and in various towns throughout the conference. In each case they have represented the college in a superior manner.



C. O. BROWN  
*Director*



## English Club



ALFORD, BUHLER, C. BROWN, COWAN, DEEVER, L. EARHART, E. EARHART, EDWARDS  
 EDSALL, EMMITT, FLICKNER, FLOOK, FOULK, H. FREEMAN, GOSCH, GARDNER, GLECKLER  
 HISKEY, HULL, HODGES, G. HATTAN, M. JOHNSON, R. JOHNSON, S. JONES, M. LANDON, LOWTHER  
 T. REESE MARSH, MARTIN, ROGERS, STATELER, STANLEY, SHAW, WEBER, WILKOWSKE, WITTER

THE English Club, an organization of those interested in literature, offers a program of events throughout the year which is of value to each member. Organized several years ago, the club has planned to stimulate a desire for personal skill and to provide for the members interesting programs of literary merit. The membership is made up chiefly of those whose major work is in the English Department, although anyone having real interest in literature may join.

During this year there were two outstanding events in the club's work. In the early part of the year two early English plays were presented, the "Abraham and Isaac" and the "Second Shepherd's Play." These typify an important period in the studying of the development of English drama, and were given this year by the class studying in that field, with both the direction and casting cared for by class members. Not only was the subject of great literary value, but the rendition was excellent.

The latter event was a lecture by Mrs. May Kennedy McCord on "Ozark Life and Folk Lore." Mrs. McCord, a native Ozarkian living in Springfield, Missouri, presented stories, songs, and an illuminating history of the Ozark "hill-billy" to a large audience which was delighted by her program.

The organization has been fortunate during this entire year in having so large a membership, and the attendance at meetings has been a gratifying evidence of the value of the work and of the members' concern.



## Y. W. C. A.



ARMOUR, BECKER, BROADIE, ELLIOTT, FLOOK, HULL, KELLY  
LOWTHER, MONROE, PARKER, SHAW, SPONENBERG, STANLEY, STITT  
THOMAS, VEILE, WATKINS, WEBER, WITTER

THE Young Women's Christian Association of Southwestern College is composed of a group of women who are striving toward a goal of worthwhile Christian living. Through the mediums of a weekly discussion group, morning watch, varied social functions, Cosmopolitan Club, Campus Sister program, Mexican Night School, they have perpetuated throughout the campus a feeling of friendliness, happiness, and co-operation.

The Y. W. C. A. is headed by a cabinet chosen to lead the group in its activities and to make it a more effective organization. Each year delegates are sent to the Estes Park Conference where new ideas are gained.



Shadows dance on the cool, deep grass—lazy clouds float by—the passing student is invited to cast himself on the soft grass, and bid time stand still—but days run swiftly by—and life goes on.—



*Where is that romantic time  
That always seems so far away?  
I thought it was Tomorrow once—  
But now I think it's Yesterday.*

## FEATURES

### Snap Index

#### *Page 78*

1. Fresh, dumb, but industrious!  
Frosh white washing the "S."
2. "Blest be the tie that bindeth."
3. Cann-i-bulls.
4. King and Queen for a day. What  
price glory!
5. Nobility.
6. Homecoming Scene—East Hall.
7. "Ah, Sweet Mystery of Life."
8. Annual Class Day tug-of-war—  
Yeah, Frosh your all wet!

#### *Page 79*

1. S. C. Band at attention on the  
gridiron.
2. Holland Hall serenades the  
Queens.
3. Hav' at ol' pill in er'ke-ed.
4. Simon Legree and his beasts o'  
burden.
5. College Hill Nudist Colony????  
No, Smith Hall girls taking a  
(cold).
6. Garland and Howard and their  
sporty runabout.
7. Gridiron mentors looking the  
situation over; looks like strat-  
egy.

#### *Page 80*

1. King? No just the snapshot  
editor.
2. Queen of May and her court.  
Pretty, isn't she?
3. Will you be mine? George goes  
into a jeer.
4. A bright spot on the campus.
5. Our "Namesake."
6. North Hall and all its Gothic  
beauty.
7. Surprise? President of the Root-  
ers Club.
8. Hillside vespers.
9. Richardson and the "77" bathed  
in evening lights. Not so bad  
at night, Eh!

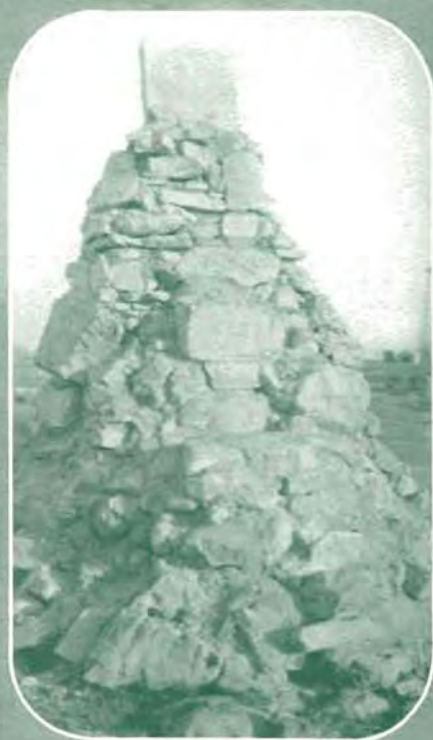
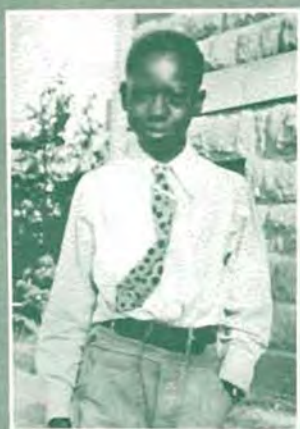
#### *Page 81*

1. Ah—Nostrum fratum gets in the  
public eye.
2. Cute! Such beautiful curves.
3. Poor things—Yes, the campus  
breadline.
4. Shh—Esther will hear us!! Looks  
like an ex-convict reunion.
5. Farewell my freun'.
6. Fruits of the turkey game.
7. "Where she leads me I will  
follow."
8. People who live in glass houses—  
should pull the blinds.















## Campus Leaders



DON GLECKLER  
HAZEL FLAHERTY

FLORA BROADIE  
ROGER KIRKWOOD

JERRY MILLER  
PAULINE STANLEY



MISS ELIZABETH ALFORD

*Through the aristocratic charm of her beauty and her pleasant smile, Miss Alford is ever widening the circle of her ardent admirers. In her reign over May Day Festivities she was Divine.*

*May Queen*





*A distinctive personality with a winning smile that is irresistible. Miss Flaherty, better known as "Irish" to her multitude of friends is truly representative, in her role as the Campus Queen.*

*An Exotic and Charming Queen, Miss Monroe reigned over the Home-coming Festivities in all its pomp and glamour, with the dignity and grace of a deity. Her alluring personality and many social graces placed her in the highest esteem of an infinite circle of admirers.*

*Book Three*  
**ATHLETICS**





## 1932 Football Season

**T**HE football team this fall started out particularly strong but hit a slump and finished the season with only a fair record. Opening the season under the floodlights at Arkansas City the Builders rolled over Friends University, 49 to 0, and the next week traveled to Alva, Oklahoma, and defeated the Northwestern State Teachers, 19 to 0.

Opening their Central Conference season against the Pittsburg Teachers on Alumni field, the two old rivals battled to a 7-to-7 tie, when Merritt Mesch put over a touchdown in the closing minutes and Martin Ossowski booted the extra point that tied the score. After this game the fighting Presbyterians were encountered on a hot afternoon and neither team was able to score. The following week was home-coming for Southwestern grads and they saw the Builders humble the Emporia Hornets, 6 to 0, in a game well played on the part of both teams.

After the home-coming battle, the Builders faltered and lost the next four games, to Wichita University, Washburn College, Hays State College, and the Oklahoma Baptists of Shawnee, Oklahoma, closing the season on Thanksgiving day against the latter team.

Martin Ossowski and Leonard Noel were chosen co-captains to lead the Builders in the 1933 season, both these boys having received all-conference mention for their work.

Seniors lost through graduation were Virgil Bruce, Merritt Mesch, Byard Anderson, Clay Hildinger, Raymond McAllister, Ernest Radford, Allan Woolard. Dick Baltzell, Ernest Radford, Leonard Noel, and Martin Ossowski received mention on various all-conference teams.



MONYPENY  
Coach



*Top row* (left to right)—FABIAN, FREEMAN, CAYWOOD, YOCKEY, OSSOWSKI, PARKER, WRIGHT, HILDINGER, FROEMMING, GERBOTH, MORELAND, THOMAS, BALTZELL  
*Second row*—TINKLEPAUGH, WOOLARD, MESCH, COOPER, RADFORD, COACH MONYPENY, NOEL, ANDERSON, McALLISTER, DUSENBURY, OVEREEM  
*Bottom row*—PHILLIPS, JOHNSON, SIMPSON, KAUFMAN, HOYLE, GLENN, BRYAN, BROADIE, LARGANT, URBAN



## 1933 Football Season

**T**HE 1933 Southwestern football season was characterized by good offensive play for the most part in that the team was able to score on all opponents played while the defense of the team was unable in many of the games to function to the extent that games could be won.

The Builders opened their season at Oklahoma City against the strong Goldbugs, and after playing them a close game for three quarters, crumbled in the last stanza and went down to a 33 to 2 defeat. The following week the Pittsburg Gorillas defeated the Purple athletes 12 to 2.

The Builders played the College of Emporia at Arkansas City in a night game and after outplaying the Presbyterians and leading 6 to 0 at the half, weakened in the last half to let Emporia tie the score at 6 to 6. The next game was a free scoring affair against the Hays Tigers at Hays and again the Builder defense was not sufficient to protect an early lead the team had built up and Southwestern College again suffered a 15 to 19 defeat.

The Emporia Teachers took the measure of the Builders 19 to 7. The Armistice Day game was the thriller of the season with the Builders leading 16 to 6 in the second quarter against the champion Shockers. But, the Purple team again demonstrated that their defensive play was below par and allowed the Shockers to total 27 points while their offense stayed at 16.

The Bacone Indians scalped the Purple collegians 14 to 7 at Muskogee and the Builders came back the next week to score their first conference win of the season over Washburn of Topeka 6 to 0. The season was closed against Friends by a lop-sided victory of 38 to 0.

Of the twenty-two men who earned letters five will be lost by graduation, leaving 17 to carry on next year.

Evan Thomas, star blocking halfback, and Martin Ossowski, all-conference tackle, were elected to captain the 1934 team.



*Top row, left to right*—HOLLAND, WILLIAMS, FROEMING, WRIGHT, PRIEST, JONES, R. BALTZELL, GERBOTH, MORELAND, BROADIE, CAYWOOD, YERGLER, V. BALTZELL, BRYAN  
*Second row*—ASSISTANT COACH ANDERSON, GLENN, FABIAN, OVEREHM, THOMAS, NOEL, COACH MONYPENY, BROWN, HENRY, URBAN, DUSENBERRY, SIMPSON, ASSISTANT COACH COOPER  
*Front row*—CROUCH, OSTERHOUT, KAUFMAN, MYERS, HARBAUGH, HOYLE, FRAZIER, GREENWAY, CROWLEY, COWAN, HOYT

## 1933 Basket Ball Season

**S**TARTING the season with rather dim prospects the Builders came along at a rapid rate and through excellent co-operation and team play finished the season in third place in the Central Conference, the Wichita University Wheatshockers and the Pittsburg Gorillas tying for the flag. This was the highest the Southwestern team has reached in the conference ranking since the Central was formed.

With two seniors, Virgil Bruce and Milton Whitson, and one junior, Chester Hamm, as a nucleus, four freshmen were fitted into the line-up that carried most of the burden of play in the conference games. The four first year men were Gerald Caywood at center, Joe Urban, Earl Bryan and Lamar Aringdale at the forward posts.

Seven games were won in conference play including one victory over Washburn, two over Emporia Teachers, two over Hays State College, and two over College of Emporia. One game was lost to Washburn and two each to Wichita University and Pittsburg Teachers.

In non-conference play the Builders defeated Friends University twice, Bethel College twice, Central State Teachers once, Southwestern Alumni, and lost games to Alva Teachers and West Texas Teachers.

Gerald Caywood, Milton Whitson and Virgil Bruce received considerable recognition on all-star teams chosen by coaches and sports writers for their outstanding work during the season.

Chester Hamm was elected captain for the 1933-34 season.



*Top row, left to right—HAMM, PARKER, CAYWOOD, McNABB, RALSTON, RADFORD  
Second row—MESCH, COACH MONYPENY, BRUCE, COOPER, WHITSON  
Bottom row—ARINGDALE, URBAN, BRYAN*



## 1934 Basket Ball Season

THE Southwestern 1934 basket ball season will go down as the best the school has enjoyed since the formation of the Central Conference five years ago. The Builders finished their conference season play in second place and were the only team to defeat the conference champions, the Emporia Teachers, this season. The Builders started their Central Conference season by defeating the Washburn Ichabods at Topeka in a thrilling game by two points and took on the fast traveling Emporia Teachers at Winfield in their second conference game. The Builders dropped this game after a terrific battle, 29 to 30. After this game the Purple athletes went into a slump and dropped games to Hays and Pittsburg. Their next encounter was a return game with the Emporia Hornets and in this game the Builders got revenge for their earlier season game and took in the champions, 35 to 26, in what was claimed to be the fastest game played in Emporia for many years. The Builders' next game was with the Pittsburg Gorillas at Winfield and in this game the proteges of John Lance were held the first 33 minutes of the game without a field goal. The Builders won that game, 21 to 12, and avenged their two-point defeat at the hands of the Gorillas at Pittsburg. Washburn and Hays were both defeated in return games, the Southwestern team closing its conference season at Hays by defeating the tall Tigers 38 to 24.

Outside the conference the Builders won most of their games including victories over Alva Teachers, Central State Teachers, Oklahoma City University, Arizona University, Friends University, and the Southwestern Alumni.



FABIAN    BRYAN    PRIEST    CAYWOOD    SCHIEFELBINE    YERGLER    PORTER  
*Coach* MONYPENY    URBAN    HAMM    FARMER    *Assistant Coach* COOPER

## 1933 Track Season

**T**HE Builders enjoyed at least a fair track season, winning three dual and triangular meets, placing second in a triangular meet and fourth in a quadrangular. Several men made a good showing in the annual Central Conference meet that was held at Emporia in the fastest meet ever held in the state.

In a warm-up meet between Tonkawa, Arkansas City, and Independence Junior Colleges the Builders won rather handily on the Ark City track. The following week, the Builders took the El Dorado and Arkansas City Colleges in a triangular. The Builders' annual dual meet with Friends went to the Builders with a rather lop-sided score. In the triangular between Wichita University, Southwestern and Friends the Builders came in second to the Shockers, and in the quadrangular at Emporia between the two Emporia schools, Wichita University and the Builders, the Purple athletes were trailing when the points were totaled.

In the conference meet at Emporia, Ray Overeem took third in the low hurdles and in so doing broke the old conference record; Milton Whitson took second in the pole vault with Virgil Moreland tying for third; Dick Baltzell took a third in the discus.

Men winning most points for the season were Clayton Gerboth in the distance races, Ray Overeem in dashes and low hurdles, Dick Baltzell in discus and javelin, Virgil Moreland in pole vault and high jump, Milton Whitson in pole vault.



*Top row, left to right—WINTERS, BALTZELL, JEFFERIES, OSSOWSKI, ELLIOTT, MAUCK, FABIAN, Coach MONYFENY*

*Bottom row—WHITSON, CUNNINGHAM, C. GERBOTH, GLENN, SHEPHERD, FOULK*

## Baseball

**A**FTER being dropped as a sport for one year, baseball was again played as a varsity sport in 1932 and 1933 and has been dropped again this year because of various conflicts.

The 1932 season was quite successful, the Builders defeating every team played, at least once, with the exception of Oklahoma City. The outstanding achievement of the season was a victory over the Chilocco Indians who were generally recognized as having the best team in the entire Middle West.

The 1933 season was not so successful as the previous one, the Purple nine winning only two games. The highlight of the season was a two-game series with Kansas State at Manhattan and although the Big Six team won both games the two teams were even on a basis of earned runs.



*Coach CAIN*



*Coach CAIN, WEIR, SMITH, ANDERSON, OSSOWSKI, PARKER, MESCH  
MILLER, TEED, RALSTON, FREEMAN, ZERGER, JONES, DAVIS*

## Intramural Sports

EACH year, an intramural athletic program is carried on at Southwestern College. This year the program was under the capable direction of the Assistant Coach Donald Cooper. Tournaments are held in basket ball, golf, tennis, wrestling, and boxing. Increased attendance has been noted each year since the intramural program was begun at Southwestern College.

The organization winning each tournament is awarded a trophy. After the trophy has remained with the same organization for three years the trophy is kept permanently.

This book goes to press before the golf and tennis tournaments are played and it is impossible to list the winners.

## Champion Y. M. C. A. Squad



CAYWOOD (*Coach*)  
SIMPSON

AINSWORTH  
WOOLARD

BOLDT  
C. ZERGER

MATLACK  
W. ZERGER



# Intramural Sports

## BASKET BALL

Y. M. C. A., *Champions*  
 Athens B tied Delphi A, *Third and Fourth*  
 Athens A, *Sixth*  
 Laconia A, *Second*  
 Delphi B, *Fifth*  
 Laconia B, *Seventh*

## ALL-INTRAMURAL SELECTIONS

### First

GEORGE CRANSTON, f, LA  
 BILL JONES, f, Y  
 MERWIN DEEVER, c, DA  
 BOLDT, g, Y  
 WATKINS, g, AB

### Second

ALLAN WOOLARD, f, Y  
 KENNETH KAUFMAN, f, Y  
 ROGER KIRKWOOD, c, AB  
 KENNETH FRAZIER, g, DB  
 GERALD BEACH, g, AB

### Third

AVERY DICKERSON, f, LA  
 LARMAN TAGGART, f, LA  
 CARL ZERGER, c, Y  
 WENDELL BROADIE, g, DA  
 ROBERT WEIR, g, AA

## COACHES

CHET HAMM  
 DICK PIERCE

JOE URBAN

LAMAR ARINGDALE  
 GERALD CAYWOOD

### Wrestling

		Weight	Class
1st	MILTON STOCKING	D 125	125
2nd	LOVELL STUBER	A	
3rd	WILBUR DUNKELBERGER	Y	
4th	WILLFRED HODGES	D	
1st	GLENN AINSWORTH	Y 135	135
2nd	LEWIE HAYSE	D	
3rd	STEVE JOHNSON	D	
4th	GEORGE BRUNER	Y	
1st	GEORGE CRANSTON	L 145	147
2nd	JAMES SPOON	A	
3rd	STEVE JOHNSON	D	
4th	WILLIAM ELROD	L	
1st	GEORGE CRANSTON	L 155	160
2nd	ALFRED SIMPSON	D	
3rd	ARTHUR STUBER	A	
4th	BERT CLEGHORN	Y	
1st	CLAY SMITH	D 165	175
2nd	LYLE GLENN	D	
3rd	HARRY ALBRECHT	Y	
4th	BERT CLEGHORN	Y	
1st	CLAY SMITH	D 175	
2nd	JOHN YERGLER	A	
3rd	HARRY ALBRECHT	Y	
4th	KEDRIC CUNNINGHAM	D	

### Boxing

1st	WILLFRED HODGES	D	1st
A	LOVELL STUBER	A	2nd
L	GEORGE ROBINSON	L	3rd
Y	WILBUR DUNKELBERGER	Y	4th
L	GEORGE CRANSTON	L	1st
D	VICTOR EDGELL	D	2nd
A	GEORGE BRUNER	A	3rd
D	CARL LOOKER	D	4th
Y	ALLAN WOOLARD	Y	1st
D	JOE URBAN	D	2nd
D	STEVE JOHNSON	D	3rd
D	BUSTER MCKNIGHT	D	4th
Y	ALFRED SIMPSON	Y	1st
Y	LAURENCE STUDE	Y	2nd
Y	HARLEY MATLACK	Y	3rd
Y	LAMAR ARINGDALE	Y	1st
D	WENDELL BROADIE	D	2nd
A	JOHN YERGLER	A	3rd
Y	RUFUS WRIGHT	Y	4th

*Book Four*  
**ORGANIZATIONS**





Hail, social life! Into thy pleasing  
bounds I come to pay the common  
stock, my share of service, and, in glad  
return, to taste thy comforts, thy pro-  
tected joys.—Thomson.

## SOCIETIES

# Aurora-Laconian Honor



HAZEL FLOOK

GEORGE LANCASTER

CHARLES BROWN

HELEN FORCE



TOM HAMILTON

LORRAINE WILKOWSKE

GERALD CAYWOOD

PAULINE STANLEY



# Aurora



ADAMS, BUHLER, COLBORN, DEEVER, DUNLEVY  
DUNGEY, E. EARHART, L. EARHART, EDSALL, M. ELLIOTT  
V. ELLIOTT, G. FLOOK, H. FLOOK, FORCE, FRANKLIN  
HICKS, HODGES, HUTTO, E. JONES, S. JONES, MONROE

# Aurora



McCLAREN, NELSON, NORBY, PIKE, RAMSEY  
RICHARDSON, RIDINGS, ROHL, SHAW, SPONENBERG  
STANLEY, SWANSON, SWARTZ, THOMAS, TURPIN  
VOLLWEIDER, WEBER, WIMBERLY, WILKOWSKE, WOODARD, WOOLARD

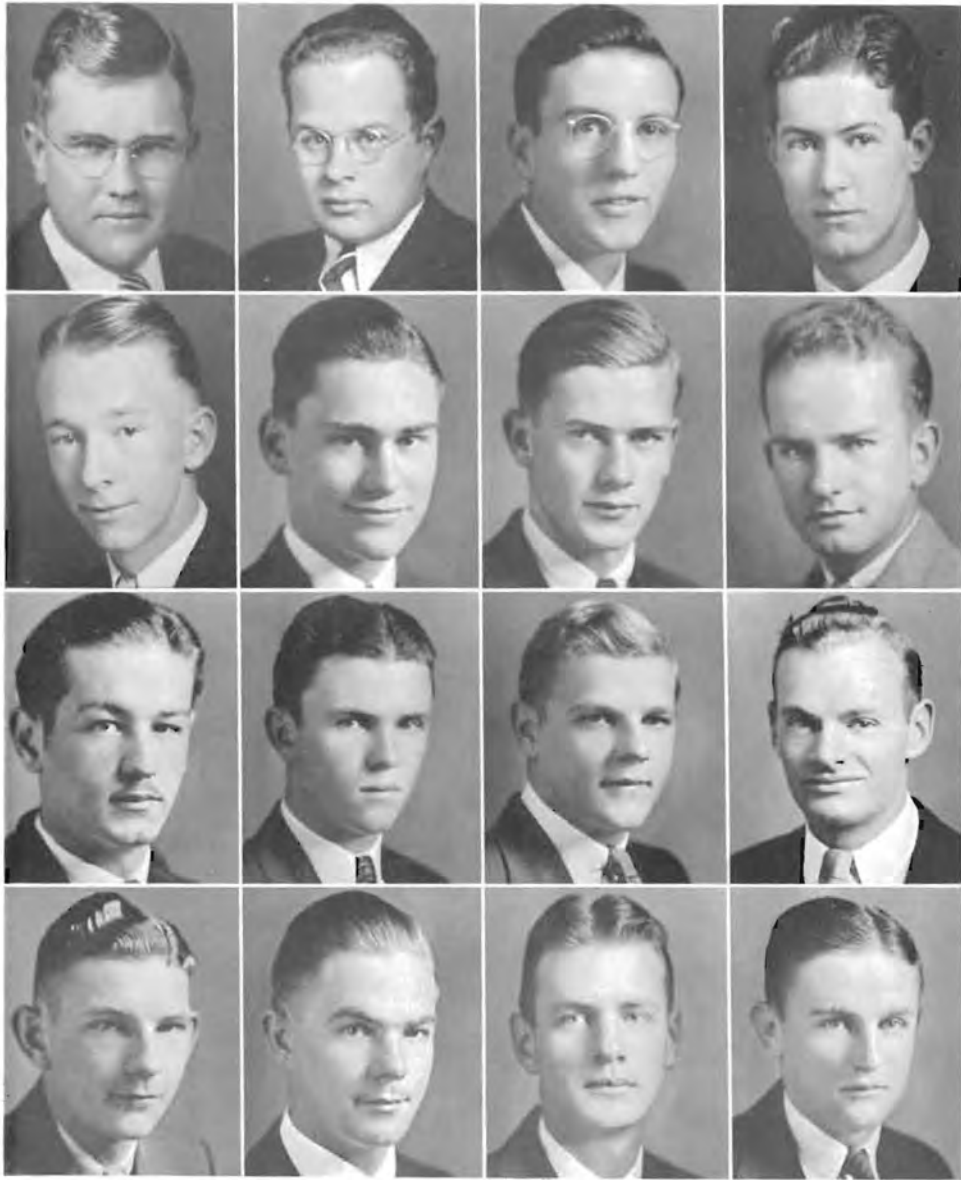


## Laconia



BROWN, BUNCH, BUNDER, CADWELL  
CAYWOOD, COLLINSON, CRANSTON, CROWLEY  
DAVIDSON, DICKERSON, ELROD, FARMER  
FLICKNER, HALE, HAMILTON, LAMAR, LANCASTER

## Laconia



LANG, MANNY, MOORE, POMEROY  
REECE, ROBINSON, ROSE, SNYDER  
STUTZMAN, TAGGART, TREES, TRUMBULL  
WATKINS, J. WILSON, P. WILSON, ZIMMERMAN

# Belles-Athenian Honor



BETTY LOWTHER

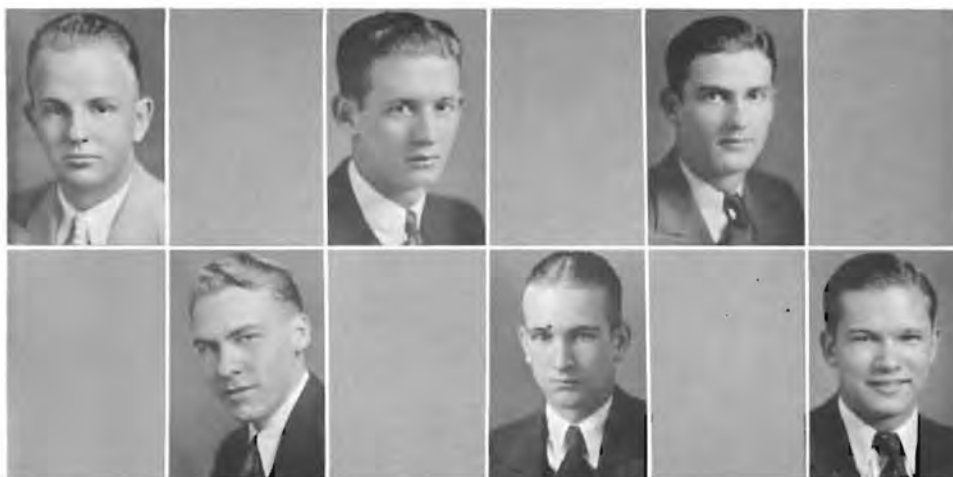
HELEN MONROE

BETTY ALFORD

HAZEL FLAHERTY

MARAVENE PHILLIPS

FRANCES LYNN



ED DIETRICK

HAROLD DEEVER

WAYNE HENDERSON

RAYMOND PAGE

CHET HAMM

JAMES SPOON

## Belles Lettres



ACKERMAN, ALFORD, ALLEN, ALLEY, AULTMAN  
AYERS, BARBOUR, BRANSON, BROOKS, CALVIN  
CARTER, COCKRUM, COLE, DOBSON, DUCKWORTH  
DUNLAP, ELLIOTT, FLAHERTY, GARRISON, GEESLING  
GILMORE, GOODSSELL, HENTHORNE, HILDINGER, HISKEY

## Belles Lettres



HUBBARD, JOHNSON, KELLY, KINDT, KUNDER  
 LOWTHER, LYNN, MARSHALL, MCKNIGHT, MCMANUS  
 MONKOE, M. MOORE, M. D. MOORE, ODENWELLER, PHILLIPS  
 PORTH, ROBERTSON, SHAVER, SNYDER, STOUT  
 E. STUBER, V. STUBER, WELFELT, WILMER, VINSONHALER



# Athens



AICHER, R. BALTZELL, V. BALTZELL, W. BALTZELL, BAKER  
BROWN, DAVIS, DUSENBURY, EBRIGHT, FRANKS  
FREY, GRAY, HALL, HAMILTON, HAMM  
HENDERSON, JOHNSTON, KIRKWOOD, LEHMAN, LYDICK

# Athens



LOWTHER, MILLER, C. MOSSMAN, H. MOSSMAN, NASH  
ODENWELLER, OSTERHOUT, PAGE, REISERER, REESE  
ROBERTSON, SNEED, STEIGER, STUBER, SPOON  
SWOYER, SPONENBERG, THOMAS, YERGLER, WEIR

# Sigma Delphian Honor



FLORA BROADIE

LOIS WITTER

HELEN HULL

ALICE LEIGHTY

MILDRED STATELER

NEVA ROUNDS



EARL FOULK

DONALD GLECKLER GARLAND HATTAN AUGUST MCCOLLUM

VIRGIL MORELAND

LAWRENCE CUNNINGHAM

## Sigma Pi Phi



ARMOUR, AVARY, BENNETT, BLAIR, BLOOMFIELD, BRIDGEWATER  
 BROADIE, COWAN, CREGER, DOTY, EDWARDS, ELLIOTT  
 ESLINGER, FLOYD, FREEMAN, GARTON, GILBERT, HATFIELD  
 HEITMEYER, HENSLEY, HINK, HOLECEK, HORNISH, HULL, JEFFERIES  
 A. JOHNSON, E. JOHNSON, L. JOHNSON, W. JONES, KRAFT, C. LANDON, L. LANDON

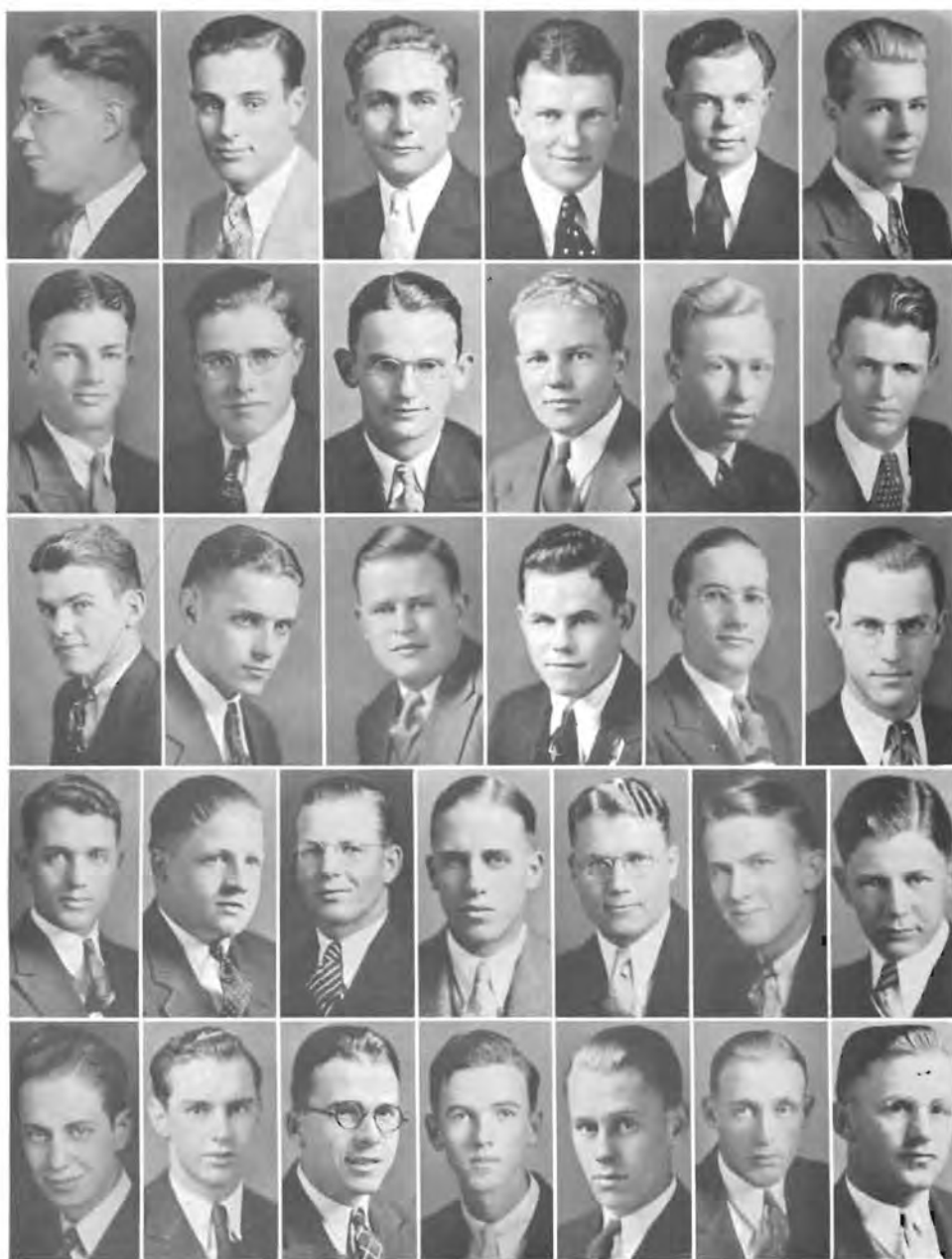
## Sigma Pi Phi



M. LANDON, LAWRENCE, LEIGHTY, LEMARR, LENT, LITTLE  
 LOWE, LEVICK, MCBRIDE, MCSPADDEN, MATTHEWS, MEEKER  
 MILLER, MILLIKEN, V. MOORE, MORRIS, ORMES, E. PARKER  
 PEACOCK, PECK, PORTER, RAYPHOLTZ, REITZ, ROUNDS  
 SHOCKEY, STATELER, STITT, SUITS, L. VIELE, M. VIELE  
 WATKINS, WITTER, WHITE, WOLZ, YOULE, G. YOUNG

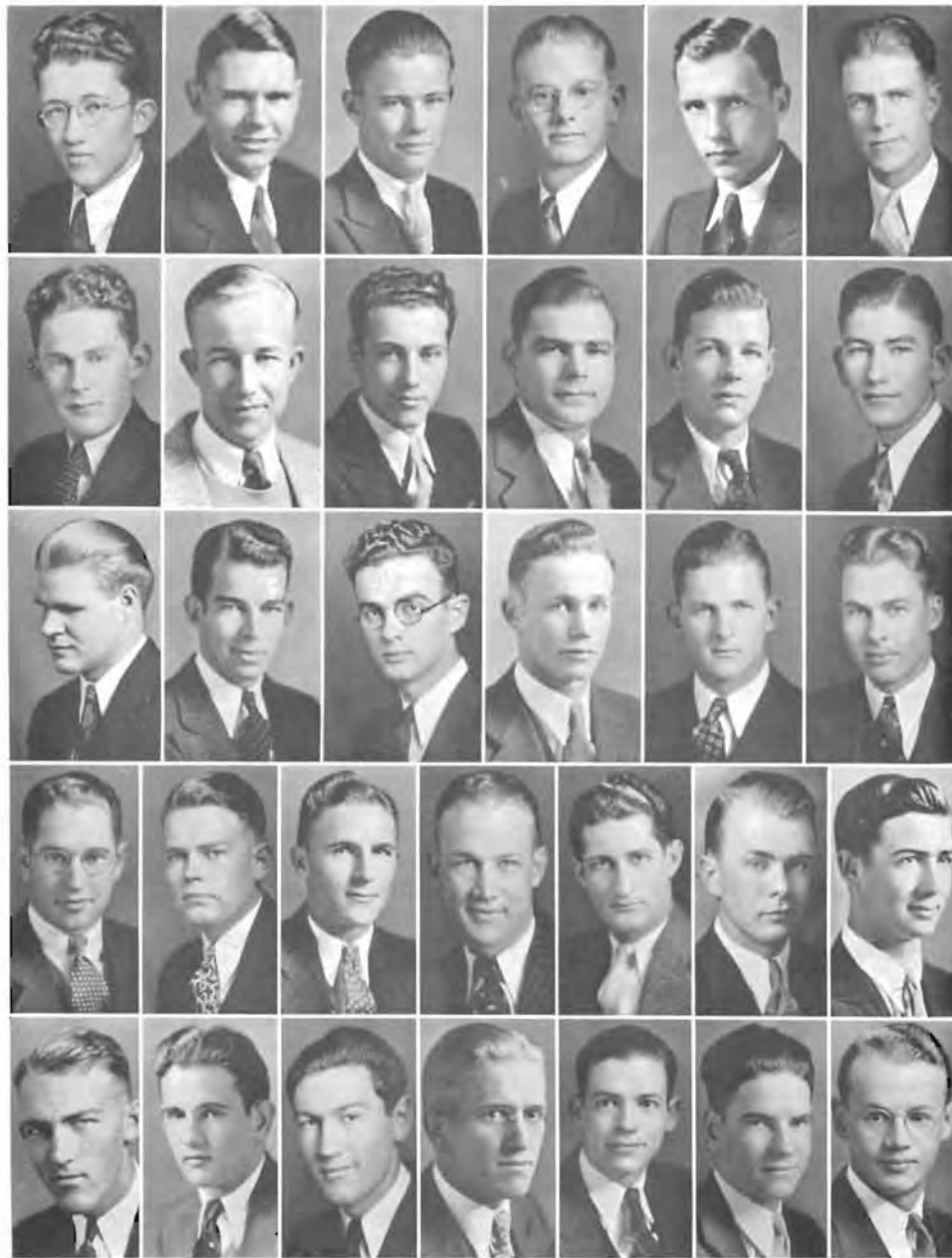


## Delphi



ALLEN, AYERS, BARNHARDT, BELT, BROOKS, BROWN  
COWAN, K. CUNNINGHAM, L. CUNNINGHAM, DAVIS, DEEVER, EDGELL  
EMMITT, FARRAR, FELT, FLETCHER, C. FOULK, E. FOULK  
FRAZER, GARDNER, GARNER, GLECKLER, GLENN, GRAY, D. HATTAN  
G. HATTAN, HAYSE, HICKERSON, W. HODGES, W. HODGES, HOLT, HOYT

# Delphi



HUGHES, JEFFERIES, JOHNSON, JONES, KAUFMAN, LAKE  
LOOKER, LOY, MAJOR, MANKA, MARTIN, MATTHEWS  
MCCOLLUM, MCKNIGHT, MILLER, MORELAND, MORRIS, RICHARDSON  
RHORER, ROGERS, SCHIEFELBINE, SEWELL, SIMPSON, SKILES, SMITH  
STOCKING, URBAN, WADE, WARREN, WEIR, WILMOTH, WOOLARD

# Personal Index

## LIBERAL ARTS FACULTY

	Page
Albright, Penrose.....	16
Allen, Leroy.....	16, 68
Altvater, Mrs. H. H.....	16
Baker, J. Thompson.....	17, 68
Burt, Charles E.....	17
Cloud, Lillian.....	17, 67, 72
Cornelius, Edward E.....	17, 68
Dressler, Grace.....	18
Dunlevy, Robert B.....	18
Evers, Helen.....	18, 66, 68
Hayes, Eleanor.....	18
Herr, Ada M.....	19, 68
Johnson, Genevieve.....	19
MacLarlane, David L.....	19, 68
McNeil, Emory.....	19
Marsh, T. Reese.....	20, 69, 72, 74
Monypeny, W. W.....	20, 85, 86, 87, 88, 89
Mossman, Frank E.....	14, 68
O'Hara, Downing.....	20, 68
Oncley, Lawrence.....	20
Poundstone, W. J.....	21, 68
Reese, Webster J.....	21, 68, 72
Smith, Arthur A.....	21
Taylor, Dorothy Blackmar.....	21
Taylor, Henry W.....	22
Vinsonhaler, C. I.....	22, 68
White, Chalcea.....	22, 66, 68, 72
Ward, William T.....	22

## FINE ARTS FACULTY

Altvater, H. H.....	23, 64
Ambrose, Frances.....	23, 64
Barbour, Hobart.....	23
Brown, Charles O.....	24, 73
Burdette, Marie.....	24
Compton, Grace M.....	24
Dielmann, Edith.....	24
Dielmann, Fern.....	25
Graham, Helen.....	25, 70
Hunt, Ida Clawson.....	25
Loudenback, H. H.....	25
Moorhead, Cora Conn.....	26
Schirmer, Allan F.....	26
Sellers, Grace.....	26
Steinberg, Merle.....	26

## ADMINISTRATION ASSISTANTS AND MATRONS

Brown, Esther.....	27
Casburn, Mrs. Mabel.....	27
Cobb, Mrs. Edna.....	27

	Page
Detter, C. O.....	27
Gosch, Gladys.....	27, 33, 68, 74
Hildinger, Mrs. Linnie.....	27
Hill, Lois.....	27
Jefferies, Mrs. Hazel.....	27, 40, 66, 105
Kindt, Fern.....	27, 101
Kitzman, C. H.....	27
Marvel, Ruth.....	27, 34, 59, 62, 64
Price, J. L.....	27
Reese, Mrs. Alina.....	27
Thomas, Frances.....	27

## STUDENTS

### A

Ackerman, Mona.....	48, 100
Adams, Myrtle.....	44, 63, 66, 67, 95
Ahlericks, DeWitt.....	52, 64
Aicher, Howard Edward.....	52, 102
Ainsworth, Glenn.....	56, 64, 91
Alexander, Ruth.....	48
Alford, Elizabeth.....	37, 64, 74, 81, 99, 100
Allen, David.....	52, 107
Allen, Ruth.....	48, 100
Alley, Berta.....	48, 100
Ames, Robert.....	64
Anderson, Byard.....	37, 85, 86, 90
Antrim, Phil.....	57
Antrim, Raymond.....	57
Aringdale, Lamar Lowell.....	52, 87
Armour, Anita.....	48, 66, 67, 72, 75, 105
Arnold, Edna.....	31
Arnold, Joe.....	37
Aultman, Doris.....	52, 100
Avary, Donna Belle.....	52, 105
Ayers, Carl.....	48, 107
Ayers, Mildred.....	52, 100

### B

Baker, Harold.....	37, 102
Baltzell, Robert.....	52, 86, 102
Baltzell, Victor.....	44, 85, 86, 89, 102
Baltzell, William.....	44, 102
Barbour, Jeanette.....	52, 64, 100
Barnhardt, Clifford.....	31, 73, 107
Belt, Evelyn.....	51
Belt, Lester.....	51, 107
Becker, Valettha.....	48, 75
Bennett, Allene.....	52, 105
Berry, Darell.....	48
Blair, Flora Alice.....	52, 60, 68, 105
Bloomfield, Doris.....	52, 105

## Personal Index

	Page		Page
Boggs, Cecile.....	57	Cooper, Hal.....	57
Boldt, Earl.....	48, 91	Cottom, Blanche.....	52, 63
Boley, Robert.....	37	Cowan, Esther.....	48, 74, 105
Bowling, Dorothea.....	31	Cowan, Leonard.....	52, 86, 107
Bowling, Ernestine.....	57	Cranston, George.....	37, 69, 71, 97
Brakebill, James.....	44	Crawford, Loren.....	37, 59
Branson, Jean.....	52, 100	Creger, Frances.....	48, 105
Brechner, D. L.....	31	Crouch, Harvey.....	37, 86
Bridgewater, Iris.....	52, 105	Crowley, Wilbur.....	48, 86, 97
Broadie, Flora.....	37, 60, 61, 68, 72, 75, 79, 104, 105	Cunningham, Kedric.....	52, 73, 107
Broadie, Wendell.....	48, 85, 86	Cunningham, Lawrence.....	37, 89, 104, 107
Brooks, Helen Louise.....	48, 64, 72, 100	Curtiss, Alfred.....	52
Brooks, Kenneth.....	48, 107	Curry, Royal.....	57
Brooner, George.....	48		
Brown, Bob.....	52, 102	D	
Brown, Charles.....	37, 60, 61, 69, 72, 74, 94, 97	Davidson, Robert.....	52, 64, 73, 97
Brown, Claron.....	52, 107	Davis, Bill.....	90
Brown, Everett.....	31	Davis, Paul.....	44, 102
Brown, Kenneth.....	86	Davis, Wayne.....	48, 60, 64, 69, 107
Brown, Marion.....	57	Day, Lawrence.....	31, 62
Bruce, Virgil.....	87	Deal, LaVerne.....	52
Bryan, Earl.....	48, 85, 86, 87, 88	Den, Henry.....	38, 63
Buhler, Irene.....	48, 68, 74, 95	Deever, Harold.....	32, 64, 59, 99
Bunch, Neils.....	48, 97	Deever, Hazel.....	44, 64, 74, 95
Burden, Robert.....	52, 64, 73, 97	Deever, Merwin.....	52, 107
Buss, Erma.....	31	Dickerson, Avery.....	52, 97
		Dietrick, Ed.....	32, 99
C		Dobson, Jean.....	48, 100
Cadwell, Carl.....	52, 97	Doty, Lucile.....	64
Callison, Ernest.....	57	Doty, Maxine.....	53, 105
Calvert, James.....	44	Dowers, Allen.....	57
Calvert, Ralph.....	48	Dowers, Ural.....	57
Calvin, Carrie.....	52, 100	Dressler, Mabel.....	57
Carr, Nadina.....	31	Duckworth, Helen.....	48, 100
Carter, Juanita.....	48, 100	Dungan, Marjorie.....	38
Caywood, Gerald.....	48, 85, 86, 88, 94, 97, 91	Dungey, Mary Louise.....	44, 66, 95
Chubb, Wiletta.....	68	Dunkleberger, Wilbur.....	48
Clark, Homer.....	31, 64	Dunlap, Helen.....	49, 64, 100
Cleghorn, Harold.....	52	Dunlevy, Barbara.....	49, 95
Clokey, Constance.....	48	Dusenbury, Kenneth.....	38, 85, 86, 102
Clood, Lois.....	31, 64		
Cockran, Genevieve.....	52, 63	E	
Cockrum, Madeline.....	48, 100	Earhart, Emma Louise.....	44, 74, 95
Coe, Frances.....	31, 59	Earhart, Lucille.....	44, 74, 95
Colburn, Jean.....	52, 67, 95	Eatinger, Zelma Irene.....	49
Cole, Marjorie.....	48, 100	Ebright, Arlon.....	38, 63, 69, 72, 102
Collinson, Kenton.....	48, 70, 97	Edgell, Victor.....	53, 64, 107
Compton, Eva.....	64	Edmiston, Wilma.....	44
Cook, Fernando.....	56	Edsall, Elda.....	44, 71, 74, 95
Cooper, Donald.....	37, 85, 86, 87, 88	Edwards, Carroll.....	32
Cooper, Lucille.....	31	Edwards, Lorraine.....	38, 74
		Edwards, Ruth.....	53, 63, 105

# Personal Index

	Page
Ehnke, Mildred	57
Elliott, Dorothy	49, 64, 100
Elliott, Harold	89
Elliott, Harriett	53, 105
Elliott, Mary Estelle	49, 95
Elliott, Vera Mae	49, 60, 61, 63, 64, 75, 95
Elrod, Howard	44, 63, 97
Emmitt, Thomas	44, 64, 74, 107
Eslinger, Elizabeth	53, 64, 105
Ester, Delbert	38, 63, 64

## F

Fabian, Kenneth	49, 85, 86, 88, 89
Farmer, Richard	53, 88, 97
Farrar, Howard	44, 63, 64, 69, 72, 107
Farris, Berlyn	32
Felt, Albert	53, 107
Fisher, Mildred	64
Flaherty, Hazel	44, 60, 61, 67, 72, 78, 79, 99, 100
Fletcher, Bill	49, 107
Flickner, Lawrence	53, 60, 64, 74, 97
Flook, Georgia	53, 95
Flook, Hazel	49, 60, 61, 66, 67, 72, 74, 75, 94, 95
Flook, Mildred	32
Floyd, Velda	53, 105
Fooshee, Irene	32
Force, Helen	38, 59, 70, 94, 95
Foulk, Clifford	53, 107
Foulk, Earl	38, 60, 61, 74, 89, 104, 107
Franklin, Florence	44, 95
Franks, Kenneth	49, 69, 71, 72, 102
Frazer, Kenneth	49, 86, 107
Freeman, Clifford	32, 85, 90
Freeman, Dorothy	44
Freeman, Helen	49, 63, 64, 74, 105
Frey, George, Jr.	49, 63, 102
Froemming, Veryl	53, 85, 86
Funston, Scott	73

## G

Gardner, Woffard	45, 68, 72, 74, 107
Garner, Victor	49, 107
Garrison, Miriam	53, 100
Garrison, Ruth	32
Garton, Edna	32, 38, 105, 59
Geesling, Ruth	45, 62, 100
Gerboth, Clayton	32, 89, 51
Gerboth, Juel	85, 86
Gibson, Richard	51
Gilbert, Lucille	38, 64, 105

	Page
Gillock, Mildred	56
Gillock, Ruth	32
Gilmore, Maxine	53, 68, 100
Gleckler, Donald	38, 59, 60, 64, 68, 74, 79, 104, 107
Glenn, Lyle	38, 85, 86, 107
Goff, Forrest	32
Goodsell, Gnan	49, 63, 100
Gray, Cecil	39, 62, 102, 107
Gray, Howard	53, 107
Greenway, Raymond	53, 86
Greshman, Maxine	64
Griffith, Lester	39
Guenther, Louis	39
Guy, George	45

## H

Hagan, Carl	33
Hagans, John	33
Hale, Howard	49, 64, 97
Hall, Roger	53, 102
Hamilton, John	33
Hamilton, Robert	39, 102
Hamilton, Tom	39, 59, 61, 68, 94, 97
Hamm, Chet	39, 63, 87, 88, 99, 102
Harbaugh, Monroe	53, 86
Hart, Marion	57
Hatfield, Dorothy	105
Hattan, Donald	45, 107
Hattan, Garland	39, 60, 64, 69, 73, 74, 104, 107
Hayse, Lewie	49, 64, 107
Heitmeyer, Wilma	53, 105
Henderson, Raymond	53, 64, 102
Henderson, Wayne	33, 59, 99
Henry, Ray	86
Henry, Helen	33
Hensley, Inez	45, 61, 67, 105
Henthorne, Bessie Lu	45, 67, 100
Hess, Harlan	33
Hickerson, Lawrence	39, 107
Hicks, Opal	49, 63, 95
Hildinger, Clay	39, 85
Hildinger, Martha	53, 100
Hink, Viola	49, 105
Hiskey, Edith	45, 74, 100
Hodges, Lillian	45, 67, 74, 95
Hodges, Wesley	53, 107
Hodges, Willfred	49, 73, 107
Holecck, Bernice	45, 105
Holland, Richard	49, 86, 63
Hollibaugh, William	71



## Personal Index

	Page		Page
Holmes, Elza .....	33, 59	Knowlton, Maxine .....	57
Holt, Dwight .....	53, 107	Kraft, Roberta .....	40, 105
Hotton, Edward .....	45, 64, 69	Kralicek, Daisy .....	51
Hotton, Nabiah .....	51	Kunder, Thelma Ruth .....	45, 64, 101
Hornish, Mildred .....	49, 105		
Howard, Emma .....	57	L	
Howard, Robert .....	57	Lake, Wendell .....	54, 108
Hoyle, Emma .....	53	LaMar, William Erle .....	54, 97
Hoyle, Luther .....	45, 85, 86	Lancaster, George .....	46, 70, 94, 90
Hoyt, Raymond .....	39, 86, 107	Landon, Lucy .....	49, 105
Hubbard, Gretchen .....	53, 73, 101	Landon, Charlotte .....	54, 105
Hughes, Wendell .....	53, 68, 108	Landon, Margaret .....	40, 66, 71, 74, 106
Hull, Helen .....	39, 63, 72, 74, 75, 105, 106	Lang, Harold .....	40, 63, 98
Humburg, Thelma .....	39, 62, 72	Largent, Sylvan .....	85
Hunter, Evelyn .....	33, 59	Lawrence, Marjorie .....	49, 63, 106
Hutto, Ada Lee .....	45, 95	Lawson, Eileen .....	54
		Lee, Budge .....	57
I		Lehman, Clairnelle .....	43, 64
Ingram, James .....	53	Lehman, James .....	54, 73, 102
		Leighty, Alice .....	46, 64, 104, 106
J		LeMarr, Celesta .....	54, 64, 67, 106
Jefferies, Archie .....	40, 89, 108	Lent, Frances .....	54, 65, 106
Jen, Pong Cheh .....	33	Levick, Ann .....	49, 106
Jenkins, Ruth .....	51	Lewis, Wayne .....	54
Johnson, Alberta .....	45, 64, 105	Little, Clifford .....	34
Johnson, Eleanor .....	49, 105	Little, Frances .....	54, 106
Johnson, Esther .....	51	Livermore, Elizabeth .....	40
Johnson, Helen .....	40, 63	Looker, Carl .....	54, 108
Johnson, LeNora .....	49, 105	Lowe, Lois Faith .....	54, 64, 106
Johnson, Maurice .....	45, 74	Lowther, Ben .....	54, 103
Johnson, Ruby .....	40, 101, 74	Lowther, Betty .....	46, 60, 61, 68, 72, 74, 75, 99, 100
Johnson, Steve .....	53, 85, 108	Loy, Harold .....	40, 72, 108
Johnston, Jean .....	49, 102	Lydick, Edwin .....	40, 102
Jones, David .....	53, 73, 108	Lynn, Frances .....	40, 64, 70, 99, 101
Jones, Eolin .....	53, 95		
Jones, John .....	86	Mc	
Jones, Leo .....	54	McAllister, Raymond .....	34, 85
Jones, Virginia .....	33, 64	McBride, Pauline .....	54, 106
Jones, Sylvia .....	54, 63, 74, 95	McClaren, Dorothy .....	54, 64, 73, 96
Jones, William .....	90	McCollum, August .....	46, 104, 108
Jones, Winifred .....	54, 105	McGill, Frances .....	34
		McKnight, Buster .....	54, 60, 108
K		McKnight, Virginia .....	49, 67, 101
Kaufman, Kenneth .....	49, 85, 86, 108	McLaurin, Carranza .....	41, 63
Kelly, Harriet .....	49, 66, 71, 75, 101, 60	McLaurin, Cardeza .....	46, 63
Kelly, John .....	45	McLaurin, Dunbar .....	54, 63
Kenreich, Virginia .....	33	McManis, Richard .....	41
King, Melvin .....	54	McManus, Martha .....	50, 101
King, Ralph .....	51	McNabb, Joe .....	87
Kirkwood, Roger .....	40, 60, 69, 72, 73, 79, 102	McSpadden, Lorene .....	54, 106
Kitch, Charles .....	34		

## Personal Index

	Page
<b>M</b>	
Maher, Madeline.....	34
Maher, Pat.....	50
Major, George.....	54, 108
Manka, Ellis.....	46
Manny, Gene.....	54, 73, 98
Marcell, Learned.....	57
Marine, Donald.....	54
Marshall, Arlone.....	34
Marshall, Ruth.....	50, 64, 101
Martin, Charles.....	46, 64, 74, 108
Matlack, Harley.....	54
Matthews, Loren.....	54, 73, 108
Matthews, Marian.....	54, 106
Matthews, Russell.....	34
Mauck, Truman.....	89
Maurer, Melba.....	34
Mawdsley, Lois.....	41, 63
Meeker, Ruth.....	54, 106
Merrill, Annabel.....	66, 68
Mesch, Merritt.....	41, 85, 87, 90
Miller, Doris.....	54, 64, 106
Miller, Gerald.....	41, 60, 62, 79, 90, 103
Miller, Lowell.....	55, 62, 64, 73, 108
Miller, Helen.....	64
Milliken, Cleo.....	55, 106
Milliken, Don.....	46, 64
Milliken, Maurice.....	50
Moncrief, Frank.....	34, 59
Monroe, Elma.....	50, 66, 75, 95
Monroe, Helen.....	46, 62, 64, 67, 78, 99, 101
Moore, John.....	46, 60, 98
Moore, Leretta.....	55, 63
Moore, Marguerite.....	50, 60, 61, 101
Moore, Mary Darlene.....	46, 67, 68, 101
Moore, Virginia.....	55, 64, 106
Moreland, Virgil.....	46, 60, 61, 72, 85, 86, 104, 105
Morgan, John.....	46
Morris, Dale.....	108
Morris, Helen.....	55, 64, 67, 106
Mossman, Clayton.....	50, 68, 70, 103
Mossman, Homer.....	50, 60, 63, 68, 69, 72, 103
Muhlenbruch, Clifford.....	50, 73
Myers, Harold.....	86
<b>N</b>	
Nash, Forrest.....	55, 73, 103
Neal, Dorothy.....	34, 64
Nelson, Marcile.....	46, 66, 67, 86
Newland, Frances Hammond.....	35, 59, 62
Niles, Lois.....	50
Noel, Leonard.....	46, 85, 86
Norby, Marian.....	55, 96
<b>O</b>	
Odenweller, Anna Beth.....	50, 61, 64, 101
Odenweller, Keith.....	41, 61, 73, 103
Ormes, Burnita.....	50, 106
Ortiz, Rebecca.....	46, 63
Ossowski, Martin.....	46, 85, 89, 90
Osterhout, Donald.....	55, 86, 103
Overeem, Ethel.....	35
Overeem, Ray.....	50, 85, 86
<b>P</b>	
Page, Raymond.....	50, 60, 61, 71, 99, 103
Palmer, Alice.....	41, 68
Parker, Bern.....	85, 86, 90
Parker, LeNora.....	50
Parker, Lillnor.....	50, 64, 73, 106
Paton, Lovina.....	57
Peacock, Lucretia.....	55, 67, 71, 106
Peck, Hortense.....	55, 106
Pennington, Frances.....	64
Phillips, Arthur.....	85
Phillips, Cleo.....	55
Phillips, Maravene.....	41, 62, 59, 66, 99, 101
Pike, Mildred.....	55, 60, 67, 68, 96
Pike, Vivian.....	46, 60, 67, 68, 70
Pinks, Robert.....	50, 73
Pishny, Marguerite.....	64
Pittman, Marjorie.....	50
Pittman, Oliva.....	35
Poe, Lorene.....	41
Poe, Velma.....	55
Pomeroy, Dale.....	50, 64, 69, 98
Porter, Bill.....	55, 60, 80
Porter, Edith.....	55, 106
Porth, Edna Marie.....	55, 101
Priest, Arnold.....	50, 86, 88
<b>R</b>	
Radford, Ernest.....	35, 85, 87
Ralston, Andrew.....	87, 90
Ramsey, Juanita.....	55, 96
Rayl, Esther.....	64
Raypholtz, Beulah.....	55, 106
Reece, Wendell.....	55, 73, 98
Reese, Iden.....	47, 64, 69, 72, 73, 103
Reid, Dwain.....	55, 73
Reiserer, Victor.....	103
Reitz, Maxine.....	50, 64, 106

## Personal Index

	Page		Page
Rhorer, George	55, 108	Strother, Donald	35
Richardson, Rita	50, 96	Stubbs, Virginia	35
Richardson, Sylvia	41	Stuber, Esther	56, 101
Richardson, Wesley	55, 108	Stuber, Lowell	56, 103
Ridings, Esther	41, 96	Stuber, Virginia	56, 101
Rinkel, Elmer	51	Stude, Laurence	56
Robertson, Jack	55, 103	Stutzman, Carl	56, 73, 98
Robertson, Willa	55, 101	Stutzman, Harriett	51
Robertson, Verna	64	Stutzman, Ralph	64
Robinson, George	55, 73, 98	Suits, Shirley Rose	56, 106
Rogers, Cornelius	47, 74, 108	Swanson, Margeurite	42, 96
Rohl, Frances	55, 96	Swartz, Jane	42, 66, 67, 72, 96
Rosales, Jose	50, 63, 68	Swoyer, Mark	47, 60, 63, 71, 72, 103
Rose, Kenneth	55, 73, 98	Syers, Dolores	56
Rounds, Neva	41, 66, 104, 106		
Royer, Leslie	41, 59		
<b>S</b>			
Schiefelbine, Leonard	55, 88, 108		
Scott, Harriet	50		
Sease, Coye	47		
Sewell, Dean	55, 60, 108		
Shaver, Lucile	50, 101		
Shaw, Mary Ellen	50, 63, 64, 74, 75, 96		
Shelton, Arloe	57		
Shepherd, Lee	89		
Shockey, Savinah	50, 106		
Simpson, Alfred	47, 69, 85, 86, 91, 108		
Skiles, Averill	55, 64, 108		
Smalley, Grace	35		
Smith, Clay	47, 68, 90, 108		
Smith, Inez	56, 63		
Sneed, Marvin	56, 103		
Snyder, Anthony Leon	47, 61, 62, 69, 72, 98		
Snyder, Pauline	56, 64, 101		
Snyder, Thelma	35, 64		
Spear, Lucile	35, 59		
Sponenberg, Laverna	47, 66, 67, 73, 96		
Sponenberg, Victor	50, 103		
Spoon, James	53, 61, 64, 73, 99, 103		
Staats, Dean	56		
Stanley, Pauline	42, 59, 61, 63, 67, 68, 72, 74, 75, 79, 94, 96		
Stateler, Mildred	50, 64, 67, 74, 104, 107		
Steiger, Harvey	50, 103		
Stetler, Margaret	35, 64		
Stitt, Velva	51, 62, 63, 67, 75, 106		
Stocking, Edwin	47, 66, 67, 96		
Stocking, Glenna	51		
Stocking, Milton	56, 64, 73		
Stout, Kathryn	56, 101		
Strohl, Eugene	64, 73		
		<b>T</b>	
		Taggart, Larman	56, 98
		Teed, Dwight	90
		Thomas, Evan	42, 62, 85, 86, 103
		Thomas, Lucile	42, 66, 72, 75, 96
		Thompson, Marjorie	51
		Tinklepaugh, Carl	85
		Tompaugh, Charles	51
		Trees, Paul	56, 98
		Tretbar, Mildred	35
		Trumbull, Merlin	47, 60, 64, 98
		Turpin, Gertrude	56, 96
		<b>U</b>	
		Urban, Joe	51, 60, 85, 86, 87, 88, 108
		<b>V</b>	
		Vance, Jack	42
		Viele, Lois	51, 64, 106
		Viele, Maxine	51, 64, 66, 75, 106
		Vinette, Darrell	47, 64
		Vinsonhaler, Charles	73
		Vinsonhaler, Edith	36, 59, 101
		Voight, Helen	42
		Vollweider, Irene	56, 96
		Vollmert, Temple	57
		<b>W</b>	
		Wade, Wayne	47, 56, 108
		Warburton, Paul	42
		Ward Violet	42, 66
		Ward, Newton	47
		Warren, Gerald	47, 60, 61, 68, 70, 108
		Watkins, Kenneth	51, 60, 98
		Watkins, Opal	42, 66, 67, 75, 106

## Personal Index

	Page		Page
Weber, Merab .....	42, 68, 74, 75, 96	Wise, Winona .....	57
Weeks, Ruth .....	56	Witter, Lois .....	47, 60, 61, 68, 72, 74, 75, 104, 106
Weinrich, Carl .....	43	Woodard, Martha .....	51, 68, 96
Weir, Max .....	47, 62, 63, 108	Woodard, Bernard .....	57
Weir, Robert .....	43, 90, 103	Woolard, Allan .....	43, 85, 91
Welfelt, Katherine .....	51, 64, 101	Woolard, Harold .....	43, 73, 108
White, Miriam .....	56, 64, 106	Woolard, Maurine .....	51, 96
Whitson, Milton .....	43, 87, 89	Wolz, Katherine .....	51, 106
Wiemeyer, Esther .....	36, 64	Wright, Rufus .....	51, 85, 86
Wilkowske, Lorraine .....	43, 61, 63, 67, 68, 74, 94, 96	Y	
Williams, George .....	86	Yergler, John .....	51, 86, 88, 103
Williams, Rose .....	47, 64	Yockey, Dean .....	85
Wilmer, Josephine .....	56, 67, 101	Youle, Louise .....	51, 106
Wilmoth, Denzil .....	56	Young, Georgia .....	56, 63
Wilmot, Wayne .....	43, 108	Young Glee .....	56, 106
Wilson, Harold .....	36	Yount, Freeman .....	51
Wilson, James .....	43, 98	Z	
Wilson, Juanita .....	51	Zerger, Carl .....	51, 90, 91
Wilson, Katherine .....	51, 68	Zerger, Waldo .....	51, 91
Wilson, Paul .....	56, 98	Zimmerman, Lewis .....	56, 98
Wilson, Rogene .....	64	Zirkle, Merritt .....	73
Wimberly, Emma .....	56, 68, 96		
Winters, Melvin .....	89		

# Autographs



## Subscribers Among The Winfield Business Organizations

FIRST NATIONAL BANK, 900 Main  
THE STATE BANK, 823 Main  
WINFIELD NATIONAL BANK, 901 Main  
WINFIELD BUILDING & LOAN, 106 E. 9th  
CALVERT-CHEEK COMPANY, 802 Main  
FLICKS CAFE, 616 Main  
DRS. SNYDER, JONES, SNYDER & SNYDER, 103½ East 9th  
DR. P. W. GIBSON, 103½ East 9th  
DR. C. T. RALLS, 413 First National Bank  
DR. C. C. HAWKE, 306 State Bank Building  
DR. C. M. McCUE, 411 State Bank Building  
DUBLERS READY-TO-WEAR, 916 Main  
GARVER BROS., 811 Main  
JACK LANE CHEVROLET COMPANY, 115 West 8th  
M. B. KERR COMPANY, 112 East 9th  
KING'S CONFECTIONERY, 117 East 9th  
KEMP BROS. ELECTRIC COMPANY, 308 East 9th  
WINFIELD STEAM LAUNDRY, 612 Main  
DRS. HILFINGER & MARTIN, 103½ Main  
W. C. ROOT AND COMPANY, 817 Main  
E. H. RUPPELIUS, 808 Main  
WINFIELD FLORAL, 820 Main  
GOODMAN'S, 819 Main  
SHENEMAN MEAT MARKET, 917 Mail  
MRS. J. H. OWEN, Lagonda Hotel  
REV. E. F. WILCOX, 715 Millington

HULLCOLENE GASOLINE & OIL CO.

BEST QUALITY

A WINFIELD PRODUCT—WHOLESALE AND RETAIL

A COMPLETE ALEMITE SERVICE

TEL. 67-F-2

KANSAS GASOLINE CO.

*"Service by the Mile"*

ONE MILE EAST OF WINFIELD U. S. 160



AS THE 1934 Moundbuilder is completed we commend the Staff on their diligent work and co-operation, which has helped to make this book a pleasure to edit.

The support of the student body and subscribers has helped to make this book possible and we wish to thank you one and all.

We wish to acknowledge the services of Mr. Maplesden of Burger-Baird Engraving Company, Mr. Bassman of Midland Printing Company, Mr. Medlin, company representative, Hickerson Studio, and Miss Grace Dressler, Faculty Advisor.

THELMA HUMBURG, *Editor.*

GERALD MILLER, *Business Manager.*

*T*HERE is no need for a wordy "blurb" to emphasize the quality of "KRAFT BUILT" Yearbooks. Their quality speaks for itself, as it does in this book.



MIDLAND PRINTING COMPANY  
NATION-WIDE SERVICE  
JEFFERSON CITY, MISSOURI



# BURGER BAIRD

OF  
KANSAS CITY



MAKERS OF PERFECT PRINTING PLATES  
DESIGNERS OF DISTINGUISHED YEAR BOOKS