



The
MOUNDBUILDER

GOLDEN JUBILEE NUMBER

1935

Published by
the STUDENT
BODY OF
SOUTHWESTERN
COLLEGE,
WINFIELD,
KANSAS





FOREWORD

LD5111
855
M6
1935

THE purpose of all education is to teach the art of rational constructive living. The denominational college has in the past thrown its emphasis on the education of the heart, sometimes at the expense of the education of the head. During the next fifty years the Christian college must make the education of the head not less important than that of the heart.

Robert A. Millikan,
April 3, 1935, for the
Moundbuilder.



DEDICATION

This issue of
THE MOUNDBUILDER

by its staff is dedicated to
Southwestern College
in appreciative recognition of
its half century of
devoted service
to the youth of Southwest Kansas
as evidenced by
the loyalty of its alumni,
the enthusiasm of its undergraduates,
and the generosity of its friends.

1885-1935

—Arthur Crookham '12



3-11-36 Gift Southwestern College



THE COLLEGE BUILDING

CONTENTS

BOOK ONE

HISTORY

BOOK TWO

ORGANIZATIONS

BOOK THREE

FEATURES

BOOK FOUR

ATHLETICS

BOOK FIVE

SOCIETIES

BOOK SIX

PERSONALITIES



BOOK ONE

The Story of Southwestern

By Dean Leroy Allen

SOUTHWESTERN is the locale of **The Master's Degree** by Margaret Hill McCarter, only she calls it "Sunset College." Her novel has caught something of the romance, the **elan vital**, the pioneer spirit that characterizes our alma mater, the temperamental mood of the Western prairies—now swept by the fresh, invigorating breezes that incite to tremendous upsurge of activity, now sun-baked under hot Southern skies, half-asleep, yet dreaming of days when these brown and barren plains shall mean more to the world than they do today. A survey of the first fifty years of Southwestern brings the ineluctable conviction that here is an institution destined for greatness. For what else can be the meaning of those dreams and visions of presidents, professors, and students—yes, and of many a humble farmer and busy housewife all over the Southwest—of unremitting labor, sacrifices, tears, prayers, faith, with which, though discouraged with toil and unfulfilled longings, one generation after another has taken up the work with wornout tools to build again what drought and disaster have torn down? And each time the college emerges stronger, more sure of her mission, and still she calls to the heights all who lift up their eyes to the hills to find inspiration to wider views, nobler aims, more significant living.

Three years after its founding, the Southwest Kansas Conference in 1885 elected a board of trustees to start the new institution. One of these was Valentine Cartwright, son of the Peter Cartwright who carried the Gospel all over the West and whose Bible, after its saddlebag career, reposes at last in the college library. A committee was appointed to

select a location, and seven ambitious towns sent invitations. The committee visited all and selected Winfield, because its offer of \$60,000, 40 acres, stone for the building, water for its construction, and all other materials at cost, was the best received, and because it believed that Winfield was the best location. One of the reasons is said to have been the wonderful view from Sunset Hill. Of this view Bishop Quayle, standing one day at the top of the Seventy-Seven, exclaimed, "Doubtless, God could have made a more beautiful scene than this, but He never did!"

In 1886, Dr. John E. Earp was elected first president. A son tells the story of the family's arrival: "On the sixth of July, 1886, our family came into Winfield over the Southern Kansas Railroad, and

as the train passed in view of College Hill we eagerly gathered about the car windows to see the new building which we understood was to be ready for use in the fall. Alas, the foundations were there, but no sign of life or progress. This was the first of a series of disappointments which followed thick and fast. We were met at the station by Professor Wood, who was conducting a successful business school in the city and afterwards became the first professor of mathematics. . . . The day was scorching and the hot winds blowing over the plains of the Indian Territory blistered face and hands. But the lovely hospitality of Professor Wood's home stands out in grateful remembrance."

September came and the building was still not ready. So temporary quarters were found—in McDougall Hall, on the second floor of Baden's general store at Main and Tenth. These quarters opened upon



Dean Allen

The Story of

an alley where a flourishing poultry business was carried on. Here on Wednesday morning, September 7, 1886, amid the unacademic quacking of ducks, and cackling of hens, Southwestern opened with 43 students. By New Year's day, the enrollment had increased to 129. The first faculty consisted of four members. If these figures seem small, just remember that in the first fifty years of Harvard the total attendance was never over twenty, and usually there was but one faculty member! Southwestern has done better than that, and has had much more competition than Harvard had! President Earp looked over the student body and expressed doubt as to ever making a noteworthy institution out of the material in hand. J. M. Cottingham says of the social life: "I doubt if there were a half dozen of us who could spend a quarter without

feeling the stress of it. The girls belonged to the Methodist Church, and, as a result of revival meetings held periodically, none of them would go to a theatre or ride a street car on Sunday. What a boon that was—our little school world lived pretty much to itself. We wanted nothing and were not disappointed!"

Dr. Earp was a notable scholar. When a man came one day to apply for the chair of Latin, Dr. Earp took down a volume of Cicero and read several passages. The candidate afterwards declared it was the first time he had ever heard Latin read as literature. Dr. Earp had a reading knowledge of thirteen languages.

At the beginning of the second school year, the new building was ready. It was a long way out of town. One had to cross meadows, cornfields, and vast vistas of Kansas sunflowers. True, if one had plenty of time, there was the ancient mule car with its semi-periodical visits and its deliberate and uncertain movements. Often the car would jump the track and then it was the custom for the second-class passengers (the boys) to "pile off" and push until the wheels condescended to climb the tracks again. The mules soon learned to stop and very patiently wait for the unloading and pushing process. Forty-nine was the record number of times the car left the track on any one trip! Whenever a student was in a hurry to make a class—his safest route was through the sunflowers! The mule car was replaced by a trolley car, dubbed by the students "the Yellow Peril." Though it was built for 20 passengers, 250 could easily ride, the girls inside, the boys on top. This ancient vehicle stayed on the track fairly well in spite of flat wheels, but the boys thought it irresistibly funny to pull the trolley off the wire. But science is wonderful! Ten years ago the trolley was replaced by Speed



Southwestern

Reeve's lightning-express bus and by the still more efficient mooching system.

In 1888 the "Ladies Boarding Hall" was built, a three-story wooden building at the head of Lover's Lane, on what is now May Queen's Green. It was destroyed by fire in 1894. A few years ago, when the ground was being leveled off to facilitate the gay-some frolics of May Day, the old well was uncovered and had to be refilled with earth to prevent old Pluto from carrying off one of the charming dancers to replace Proserpina, who must be old and ugly by now! Joseph Earp tells how this well was located. An old man walked around holding the ends of a switch. At the point where the loop of the switch suddenly inclined downward the well was dug. The water was pumped into the dormitory by a windmill.

President Earp resigned in 1890, and Milton E. Phillips took up the task. There was no library except a score or two of old tomes that no one wanted. Dr. Phillips was a lover of books. The students were welcome to use his, but he thought they should have a library of their own. So the Magdalena Phillips Library came into being. It was in honor of the president's wife and was established at the grandest party in the history of those early days, held on the twenty-fifth anniversary of their wedding. Old North was ablaze with lights, resplendent with flowers, rugs and furniture (borrowed for the occasion), and everybody invited brought books or money for the library.



The Story of

In 1892-1893 the enrollment rose to 613, the largest among the church colleges of Kansas, a position Southwestern holds to this day. Classrooms and halls at Old North were crammed with students. Traffic regulations were imperative, and so originated that weird system known as "faculty regulations," which reached its culmination in the "Purple Book" of 1933. The first rule adopted was, "Keep to the right!"—the only rule of discipline in force at that time, although there were some more or less vague understandings about what came to be called "closed nights."

Many were the discouragements of the earlier days. Often there were no funds. Money wasn't easy to borrow. Teachers' salaries went unpaid. More than once creditors levied on the furniture, which was then sold at auction at the corner of Ninth and Main, bought up by some friend

of the institution and carted back to the college. Once a dray had been loaded with chairs, tables, and apparatus to be sold for debt, when W. C. Robinson appeared, paid the bills, and classes were resumed. At one time, the greater part of the campus was turned over to him and he was the owner of a college! Once Professor Phillips mortgaged his home to keep the school alive. The professors had to take their pay in slides, preserved frogs, and geological specimens. The panic of 1893 almost closed the college and nearly chilled the enthusiasm of those early builders—but not quite! Students could not pay tuition, and no one thought of keeping them out for such a reason, so they signed notes! Drought and grasshoppers added their contributions—as other contributions ceased! In 1894, President Phillips resigned, and William N. Rice took up the work. He resigned in 1894 and

Granville Lowther acted as president in 1895. Chester A. Place was president from 1895 to 1899. In 1896 it appeared the school would have to close—no funds and prospects slender. In this emergency, the faculty leased the school and for two years operated the institution without deficit—the professors took the tuition that came in and somehow lived on that. Salaries as low as thirty dollars a month for a six-hour-a-day teaching schedule! Tuition ten dollars a term, often paid in labor or commodities, and in one instance, at least, in town lots! Room-rent a dollar a month, board a dollar ten a week. One of the instructors, speaking to the Conference, said, "The aim of education is to make this (holding up a chunk of coal) look like this (producing from his pocket a bright silver dollar)." Then he said, "Please don't ask me where I got it. I borrowed it from my roommate. It's a keepsake of his." Two Ph. D.'s, by accepting a discount, got some cash on



Southwestern

warrants long past due and decided to celebrate. So, after long argument, they bought a sack of peanuts and walked a mile and a half to save street-car fare! Only two of our present faculty survive from nineteenth-century days, one a student then, Eleanore Hayes, and the other an instructor, Professor Robert B. Dunlevy. What tales they could tell, and how they must smile when present hardships are complained of!

On a stair-landing of Old North was a tank for fire-protection. It was the custom to dip new students into this head-first, just to make sure they were properly imbued with the Southwestern Spirit. But Elijah Pilgrim Giger, colored student preacher, was too wary to be caught near this tank. So a bucket of water was placed on the campus and, when least expecting it, he got his ducking in the usual form, if not in the usual place. Perhaps he got an extra dose because of the extra trouble his initiation had involved. In any case, as he came up spluttering, he said, "I'se been baptized by water and by the Holy Ghost, but dis is de fust time I'se ever been baptized by de Devil!"

William H. Rose was acting president in 1899-1900. In 1900 to 1903, Frederick C. Demerest was president. The hard times still held on and not much progress could be made. In 1903 Professor George F. Cook became president. The merchants of Winfield in this year began to take a vital interest in the college and promised to raise \$25,000 if the trustees would raise \$75,000. Chaplain McCabe, afterwards



The Story of

bishop, took part in this campaign. President Cook, saying he was unsuited for money-raising, resigned and Frank E. Mossman was elected president in 1905.

The naming of our college caused a lot of trouble. Conference, trustees, presidents, and friends—all took a hand at it. Finally, the students themselves named their own school. Here's the way it came about. The Conference of 1884 decreed that it should be called the "Southwest Kansas College." The trustees in the first charter called it "The South West Kansas Conference College." Think of working that into a yell! Dr. Earp in the first advertisements sent out gave it two names, "South West Kansas College" and "Southern Kansas Normal School and Business College." Other names suggested were "Cokesbury" and "Epworth" College. So the dispute went on for twenty-five years. The trustees, in a discussion lasting

all day and until two the next morning, reduced the name to "South Western College" and seemed to fix the matter forever by erecting over the entrance of Richardson the letters "S. W. C." Student riots broke out against the offending middle letter. Having read about the Boston Tea Party, four daring souls, with faces blacked and heads tied up in bandanas, got ropes, ladders, and planks, constructed a swing, and cut the "W" from the building. President Mossman and Professor Phillips had a hurried conference the next morning. "What now?" "There's only one thing to do: grin and say nothing!" Finally, the trustees had the charter changed and the S. C. stands!

"Prexy's Barn," a wooden structure standing where the sunken rose garden is now, was the first building erected by Dr. Mossman, who got six men to contribute one hundred dollars each. It was dedicated February 10, 1908. There was a boxing match, Doc Hinshaw's band of twenty pieces, soloists, speeches, a tug-of-war, and a basket ball game between St. John's and Southwestern. In this little gym, two state championship teams and one national championship team were trained.

In 1908 the Conference met in Winfield. A tent was erected on the campus and a banquet, supervised by Mrs. Mossman, served to a thousand people. Bishop Warren and others spoke. \$43,000 was raised. A little later James Richardson gave \$30,000 and the building that bears his name was erected on the Moundbuilder's biggest mound, Sunset Hill.

From 1914 until 1916 the first great financial campaign was waged, for \$600,000, under the invincible leadership of Dr. Mossman, assisted by C. M. Gray and a score of others. Winfield raised \$78,000, the alumni \$25,000. November 29, 1916, was set as the last day. It was a day of



Southwe

anxiety and
tions possi-
came and
posted in
at last a
goal was
ten o'clock
intending
in with a
subscriber
one knew
total name
western
accredited
mitted
ciation in
In 1916

the day
was a day
of South
Enlistment
Willis
and took
S. A. T.
Holland
it, were
recks. 30
and took
nearly 100
Three
entered
were not
and over
rank, 3
killed
contracted
students
ally leave
prizes
Personal
all South
People
want
other
always
and we
In 1916
become

Southwestern

anxiety and expectancy. Subscriptions poured in all day, people came and went, bulletins were posted from time to time, and at last, about four o'clock, the goal was reached. Then about ten o'clock, R. A. Dadisman, Superintendent of the Pratt district, came in with an old satchel containing subscriptions for \$50,000 that no one knew anything about. The total raised was \$678,000. Southwestern could now rank as an accredited college. It was admitted to the North Central Association in 1917.

In 1917 the war spirit invaded the campus. President Mossman was authorized to offer the services of Southwestern to the nation. Enlistments began at once. Coach Willis Bates went to Camp Sherman and took special training for the S. A. T. C. Association Hall and Holland, with a mess hall behind it, were turned into military barracks. Students prepared for war and took college work. Many nearly perished in the flu epidemic. Three hundred and seventy-five men entered the service. All branches were represented. One hundred and twenty attained to officer's rank, 8 died in camp, 5 were killed in action, 3 died of diseases contracted in the A. E. F. The students at home organized a Loyalty League to raise funds for enterprises connected with the war. Personal letters were written to all Southwesterners in the service. Purple cartons with S. C. pennants were sent filled with candy, other "eats," books, magazines, and always with the message, "Return and we will fill again."

In 1918 Dr. Mossman left to become president of his alma mater,



The Story of

Morningside College. He had made Southwestern a real college, provided an endowment, and secured its recognition as an accredited institution. Dr. William T. Ward was made acting president and served till the end of the year. As presidents came and went, one personality remained constant for more than thirty years—Professor John F. Phillips, as student, teacher, registrar, dean, business manager, and vice-president. He died at the close of his last year's service in 1925, and his funeral in Stewart Gym on the afternoon of commencement day was a great tribute to a great man.

Dr. Albert E. Kirk became president January 1, 1919. Attendance grew from 300 to 1,346. Faculty and facilities became inadequate. Expansion became imperative. Dr. Kirk was adequate to this task. In 1924 Stewart Gymnasium and

Library was completed, one of the finest college structures in Kansas. President Kirk then turned to the problem of endowment and the Fortieth Anniversary Campaign was launched. Its goal was a million and a third, but actually over \$1,520,000, including \$144,000 that had been pledged on Stewart Gymnasium, was subscribed for endowment, debt payment, and educational needs. Dr. Kirk was assisted in this campaign by R. A. Dadisman, William T. Ward, W. F. Bigler, W. V. Burns and many others. Faculty and students subscribed \$50,000; Winfield alone subscribed \$220,000.

Dr. Kirk raised educational standards, modernized the curriculum, increased the offerings of departments. To him chiefly must go credit for the growth of the School of Fine Arts. He brought into its faculty such outstanding personalities as Earl Stout, H. Hugh Altvater, afterwards dean of the school, who secured for it membership in the National Association of Schools of Music, the Fioramontis, C. O. Brown, Cora Conn-Moorhead, H. S. Dyer, founder of the A Cappella Choir, Henry S. Loudenback, and many others. In 1926 Dr. Kirk united the School of Fine Arts and the Winfield College of Music.

President Kirk stood for academic freedom. Always an intransigent foe of obscurantism, he opposed the movement to abolish the scientific teaching of biology in the college. His efforts culminated in a memorable five-hour debate at Great Bend in which the laymen's conference wisely upheld the right of the college to teach the truth of God as revealed in nature. A historic episode was the "pacifist fight." Dr. Kirk, an ardent advocate of international peace, was at General Conference in Springfield, Massachusetts. A



Southwestern

resolution came up there looking to the abolition of church support for war. A group of students, fired by the flaming oratory of a senior, Percy Beck, proposed to send a telegram to Dr. Kirk. The movement grew until finally the whole college in chapel assembled authorized the following telegram: "Southwestern in 1917 took up arms and laid down life to make the world safe for democracy. Southwestern in 1924, with the same spirit, wishes to join in the crusade to make the world safe from future wars. We look to you to lead us." Militaristic and sensational newspapers saw in this altruistic sentiment thus expressed opportunity for an attack upon "pacifism." They sent reporters, stirred up students and citizens, and wrote long articles headed "Southwestern Goes Pacifist." A storm of criticism raged about the college. Special chapels were held with red-hot speeches, songs and cheers. Faculty and students stood firm and waited for Dr. Kirk's return. He got here just in time for final chapel in commencement week. In one of the greatest speeches of his career, he vindicated Southwestern's patriotism, challenged anyone to interfere with her right to teach the truth, and asserted her intention to continue to stand for peace and right at any cost. He was cheered to the echo. Never were students and professors more proud of their leader! None being able to gainsay his stand, the critics retired and the incident became a part of Southwestern's dramatic history.

President Kirk was equal to any occasion. One night a fierce battle raged between the students and the "Johnnies." At the height of the conflict, President

Kirk rushed between the opposing armies. Turning to the Southwestern warriors, he ordered them to lay down their arms. One young fellow defied him. The president pointed an accusing finger at him and shouted, "Young man, you are expelled!" "How can you expel a guy that isn't even in college?" the hoodlum retorted. He had joined the Southwestern forces for the

fun of the fight! In the roar of laughter that rose from both hostile forces good humor was restored and the president easily dismissed the mob.

Professor Vinsonhaler, one of the colorful figures of the later years, had a similar experience. He was against everything that distracted from the main business of his classes and especially the modern custom of "dolling

up" in public. One day a girl who really needed no extra embellishments was hard at it when she was very sharply ordered to pay attention to the beauties of literature rather than to those purely physical. "But," she said, "I'm not a member of this class!" "Who are you then?" "I'm a Wichita U. student here on a visit!" She needed the lesson just the same—and got it! The professor is noted for his sarcasm—all in a good cause! On one occasion, when a class had been more than usually heedless, he exclaimed, "O you kids, I'd like to take your heads off. It would disfigure you some—but not be much loss to any of you!"

During Dr. Kirk's administration, athletic rivalry with Fairmount grew to such proportions that raiding of each other's campuses and battles between students in automobiles, with rocks and gunfire occurred. Representatives of the two student bodies met on neutral ground and drew up the "Treaty of Mulvane," abolishing the

In Memoriam



W. H. MOORE, D. D.

W. L. (Bill) MARTIN

D. M. YETTER

The Story of

warfare. This "treaty" being violated by certain Southwesterners, Dr. Kirk declared that if caught they would be sent home and would not need to pack their trunks, as the latter would be shipped home after them. With many another admonition, he kept peace for ten years. In 1928, he resigned to accept the position of head of the college division of the Methodist Board of Education.

He was succeeded by Dr. Ezra T. Franklin. His task was largely a financial one, to collect pledges made in the last campaign, interest new funds, balance the budget, wipe out the debt that was accumulating on account of the growth in enrollment. He assumed the burden cheerfully and adopted plans which he strenuously strove to carry out. He resigned in 1931. Dr. R. L. George, pastor of Grace Church, Winfield, and president of the Board of Trustees, was chosen acting president and for six months, in one of the most difficult periods of the college's history, bore his double burden with unexampled dignity, diplomacy, and grace.

Then the unexpected happened. Dr. Frank E. Mossman was called back in 1931 to finish the work he had begun to make Southwestern an outstanding accredited college devoted to Christian education, the development of students fully fitted to make their contribution to the building of God's Kingdom on earth. To this task he is now devoting his experience in college administration, his capacity for challenging and

holding loyalty, his financial ability, and all the powers of his later years. He has reorganized the faculty into nine departments, led in the formulation of an up-to-date curriculum, carefully safeguarded the interests of the institution throughout the worst financial depression in the history of the world, and is now conducting a campaign to wipe out all indebtedness by

October, 1935, when once again the Conference will meet in Winfield to celebrate the fiftieth anniversary. Truly, if the first hundred years are the hardest, Southwestern's troubles will soon be half over!

Southwestern has always been noted for her student activities. Initiative, verve, enthusiasm, strenuous endeavor, careful attention to detail, determination not to be satisfied with anything short of excellence—this is the Southwestern Spirit. In 1921, she took second in the national basketball tournament under

the coaching of Bill Bates. Here was a name to conjure with! Bill was an orator as well as an athlete. When he spoke in student council his hearers were moved to tears and voted him all the money he asked! Coach Monypeny has carried on the tradition of success in athletics. With him victory is not the main thing. He has ideals, standards—and they are high. And the victories have continued. Only this year Southwestern tied for the conference championship in basketball. Lillian Cloud, by her talents and intelligence, has brought lustre to women's athletics.



R. L. George, D. D.
President of the Board of Trustees

Southwestern

In dramatics there have been Helen Graham and the Campus Players. A flaming soul, a fervent Southwesterner! Her yelling (there is nothing like it) is indispensable at games. And she puts the same enthusiasm—and considerably more art—into her plays. Unusual and beautiful effects are obtained. Her attic studio, the Little Theatre, furnished and decorated to her own taste, is the most artistic room in any college for miles around. More lately, there have been Edith Dielmann and the Le-neans, presenting religious drama at its highest. A most romantic troupe, like the barnstormers of old, traveling all over the country, making and carrying along its own costumes and equipment and showing nightly the Gospel in action.

The men's glee club winning the state contest three times in succession, the A Cappella Choir astonishing Chicago and New York with its concerts, the Violin Choir, founded and directed by Dean Altvater, with its classic chamber music, the College Band, under the inspired direction of Professor C. O. Brown, are examples of outstanding musical organizations.

Successes in forensics have been too numerous to catalog. Victories reached their culmination in 1930 when Southwestern won the state championship and first in women's debate in the national tournament. She has a record equalled by no other college in the United States: for three successive national tournaments South-



Frank E. Mossman

President, 1905-18; 1931—

A. B., A. M., Morningside College; D. D., Upper Iowa University; LL. D., Southwestern College. Pi Gamma Mu, Pi Kappa Delta. Vice-President Kansas Council of Church Schools; 32nd Degree Mason.

western went to the finals in women's debate; at Estes Park and again at Tiffin, Ohio, she took second, and at Wichita, first place. The girls who achieved this result were Lucile Wright, Edith Stewart, Freda Scoggins, Evelyn Hunter, Phyllis Burgess, and Irlene Moore. Dr. J. Thompson Baker has continued these achievements in oratory, debate, extempo—winning state and national honors and putting on great tournaments for high school and col-

The Story of Southwestern

lege speakers. This year again the state championship in debate was ours.

The annual May Fete, originated by Belles Lettres in 1898, was handed over to the whole school in 1921. From the first May Queen, Marie Louise Robinson, to the latest, Betty Lowther, typical Southwestern girlhood has had its fitting glorification. The words of "Alma Mater," were written by Florence Cate in 1907. The "cemetery" was established by the Student Council in 1910. The idea grew out of the first "tombstone," which was painted by Leonard Bacon. The "Big S" was built in 1912.

The story of the Jinx, one of the most unique, picturesque, and inspiring myths in American student lore, originated in 1912, when Southwestern defeated Fairmount in football, 41 to 3. A stone was painted with the first replica of the fabulous monster, who, since that time, often appears on the field of combat just in the nick of time, to bring consternation to the confident foe and victory to Southwestern. It was stolen by Fairmount from the cemetery and placed in Morrison Library. Southwestern brought it back and placed it in one of the vaults in Richardson. But the foe crawled through a ventilating duct, opened the vault, and took the Jinx to Wichita. This time they claim it was blown up with dynamite and the pieces distributed as souvenirs, but this tale is disproved by the fact that there are still three or four Jinx stones concealed in and about Southwestern—and by the further fact that "the Jinx still lives!"

The college weekly, started in 1889, had a different name each year until 1893 when it was finally called "The Southwestern Collegian." The first "Moundbuilder" was published in 1912. Before that the annual was called The Southwestern, started

in 1905. The term "Moundbuilder" originated in 1910. Arthur Crookham, Leonard Bacon, Jesse R. Derby, and Fred Clapp had been talking over the matter of a suitable nickname for the college and its athletes. Derby wrote an editorial on the subject: "Would it not be a good thing to associate the name of 'Moundbuilder' with Southwestern and her affairs? Why not call her various teams 'Moundbuilders' rather than 'Preachers' or 'Methodists'? Our building is on a mound and since we, as students, dwell largely thereon, we may consistently call ourselves moundbuilders—and what is more it will probably live." Harry Hart, too, was trying to establish a better athletic nickname and, after hesitating over "Cliffdwellers," chose "Moundbuilders," "because anybody could just dwell there," he said, "but 'Builders' show action." Through his stories in the "Courier" he popularized it over the state. The building of a mound as a symbolic ceremony started in 1927. At the first chapel that fall there was suggested "the inauguration of a new college custom, absolutely unique among all the colleges of the world. Nobody but Moundbuilders can build mounds. So no other college has now, or ever is likely to have such a custom." That night the mound was started and dedicated with prayer by President Kirk and an address by Dewey Short. Every year students and instructors each build a stone into the mound.

It is a brave college that takes a Jinx as its mascot, though Southwestern's history shows the eternal fitness of the symbol, but Southwesterners are Builders and nothing can stop their persistent proclivities either on the Campus of the Purple or in the society of the future. They build, and will build, for God and home and native land, for Alma Mater, and for the Parliament of Mankind.



BOOK TWO
ORGANIZATIONS

IN ORDER
students
scholastic
college year
membership

This son
that time ne
had an aver
upper ten
elected to
year and by
ulty the up
elected. B
ing in the
a senior to
seventy-five

The new
ing during th



Frances Clegg

Order of the Mound

IN ORDER to give recognition to those students who have maintained a high scholastic record throughout their four college years, the faculty elects them to membership in the Order of the Mound.

This society originated in 1917. At that time no senior was eligible unless he had an average of a "B" grade. Now the upper ten per cent of the senior class is elected to the Order of the Mound each year and by a two-thirds vote of the faculty the upper twelve per cent may be elected. Besides the requirement of ranking in the upper ten per cent of his class, a senior to be elected must have had seventy-five hours of work at Southwestern.

The newly elected group has one meeting during the year. It has been a custom

to have this meeting at the time of commencement each spring in the Winfield home of one of its members. This gives the old members a chance to meet the new. At the final Chapel the new members are presented with an "Order of the Mound" key which is similar to the Phi Beta Kappa key.

Those elected this year were: Frances Cregar, Hazel Deever, Tom Emmitt, Wofford Gardner, John Moore, Vivian Pike, Newton Ward, and Mrs. Mary Watkins. With the addition of these members, the total membership is two hundred and fifty-nine.

Aileen Gafney, Winfield, is president of the organization.



Frances Cregar Hazel Deever Tom Emmitt Wofford Gardner
John Moore Vivian Pike Newton Ward Mrs. Mary Watkins

Student Council



Top row: Moreland, Swoyer, Warren, Lowther, Gresham, Corp, Albright
Second row: Pike, Snyder, Stateler, Weir, Berry, D. Elliott, H. Flook, Franks, Johnston
Third row: Page, Watkins, Blair, G. Flook, Miller, Porter, Stocking, Thompson, Wise
Bottom row: Young, Buss, Colbert, Davis, Goforth, Hammer, Keller, McIntire, Stitt

PROMINENT on the campus is the Student Council, which is a student governing body composed of four members and two alternates from each class of the college. The purpose of the council is to provide a representative group to take the initiative in all student enterprises; to develop proper co-operation and co-ordination between the students and administrators of the college; to promote constructive school spirit, and to share with the faculty in the control of student organizations.

The council is a legislative body, and it exercises this privilege whenever the occasion presents itself. It has many duties and responsibilities as regards those projects over which it has direct control, such as student assemblies, all school functions, pep rallies, student elections, arrangements for two holidays per year, and awarding emblems of honor. In administering the student activity funds, the council helped super-

vise successfully the budgetary system for each department.

This year the council maintained its reputation as an efficient and capable body in administering to the students their need for democratic government.

Members of the Executive Committee of the Student Council:

First semester: Virgil Moreland, president; Mark Swoyer, vice-president; Gerald Warren, finance chairman; Betty Lowther, social chairman; Lowell Miller, chapel chairman.

Second semester: Virgil Moreland, president; Mark Swoyer, vice-president; Gerald Warren, finance chairman; Max Weir, social chairman; Mildred Stateler, chapel chairman.

Other officers elected by the Student Body, but not members of the council, were: Kenneth Watkins, Robert Burden, cheer leaders; Don Hattan, president of the Rooters' Club.

Inter-Society Council



Top row: MacFarlane, Adams, Buhler, D. Elliott, Flook, Franks, Gardner
Middle row: Hatan, Henderson, Hensley, Hollibaugh, Kelly, Kunder, Leighty
Bottom row: Moore, Moreland, Page, Pike, Snyder, Stateler, Swoyer, Warren

PROMOTION of friendship, regulation of rush and pledge activities, and settling all society problems, stand out as the purpose of the Inter-Society Council, organized in 1923.

The Council is composed of two members from each society, the president and representative, and a president, who is chosen each year.

Romance Language Club

LAST fall, the Romance Language Club was organized with its ideal of increasing knowledge of people, customs, and literature as well as language of both France and Spain. It was begun under the sponsorship of Miss Emily Ericsson, and presidency of George Guy. All interested students are welcome and eligible to membership.



Top row: Guy, Coe, Crawford, Doty, Friend, Guy, Heilmeyer, Henthorne, Herrin, Ericsson
Middle row: Hill, Holecek, Hughes, Keller, Kunkel, Landon, Looney, Major, Menendez, Morris
Bottom row: Morton, Mundis, Parker, Peck, Rhoades, Robertson, F. Rosales, J. Rosales, Roth, Woodard

Moundbuilder



Top row: Miller, Pike, Caywood, Crawford, Elliott, Vollweider, Warner
Bottom row: Kunkel, Jones, Hotton, Lee, Moore, Stoelzing, Story

IT WAS in 1905 that the first yearbook, recording the activities of our college, was published by the students of Southwestern College. That book was called "The Southwestern" and was edited by T. C. Maxwell, who dedicated it to Dr. George Fox Cook, president. At that time the institution was called the South West Kansas Methodist Episcopal Conference College. Two more books were published using that name in the years 1907 and 1909, edited by Alva L. Snyder and C. E. Muchmore, respectively. Not until 1912 was the name "Moundbuilder" used. The name itself was originated in 1910 when several students felt the need for a more suitable nickname for the college and its athletics. Said James R. Derby in a 1910 editorial: Would it not be a good thing to associate the name of "Moundbuilder" with Southwestern

and her affairs? Why not call her various teams "Moundbuilders" rather than "Preachers" or "Methodists?" . . . Our main building is on a mound and since we dwell largely thereon, we may consistently call ourselves "Moundbuilders" . . . and what is more it will probably live.

Though the book has grown with the years in size, in 1905 or in 1935, the spirit is the same. We find always love for our college. Our wish is the same as that of Miss Christine Whinery, editor in 1931, "that this Moundbuilder will be to you a magic mirror which will present for you your past year in its entirety as you look through its pages. It is our hope that this Moundbuilder has added a small amount to the towering mound that is Southwestern." We know those of the past have done just that. We are trusting the future to favor this book likewise.



Max Weir
Editor

Wilbur Clark
Business Manager



THIS year the Co plan of a sing instead of using the Under the guidan Howard Elrod, Pike, editor, the p and comment am



Top row: V M
Middle row: K S
Bottom row: M M

The Southwestern Collegian



Top row: Pike, Curtiss, Stateler, Hill, Berry, Elrod

Bottom row: McGinnis, Osterhout, Hodges, Lee, Jones, Miller, Woodard

THIS year the Collegian resorted to the former plan of a single editor for the entire year instead of using the six-weeks' set-up of last year. Under the guidance of Dr. Myrta McGinnis, Howard Elrod, business manager, and Vivian Pike, editor, the paper enjoyed good circulation and comment among the student body.

Pi Kappa Delta

THE Southwestern chapter of Pi Kappa Delta acted as host to the State Debate Tournament this year, in addition to the regular Southwestern Tournament. Fourteen new members were admitted this year, with good promises for strong teams next year. Vivian Pike is the president of the local chapter and Dr. J. Thompson Baker, sponsor.



Top row: V. Pike, Allen, Baker, Blair, Buhler, Cloud, Edsall, Gardner, Gilmore, Halbert

Middle row: Harlan, Henderson, Hilfinger, Hill, Hughes, Johnston, McIntire, F. Mossman, H. Mossman, Paasch

Bottom row: M. Pike, Rosales, Savage, Smith, Stocking, Warren, Whitwam, Wimberly, Woodard, Young

Pi Gamma Mu



Top row: Pike, Baker, Buhler, Chubb, Cloud, Evers, H. Flook, Franks, Freeman, Allen
Middle row: Gardner, Gosch, Gresham, Hensley, Herr, Holecek, Lowther, Lynn, MacFarlane, McKnight, Moore, Moreland
Bottom row: Mossman, O'Harra, Poundstone, I. Reese, W. Reese, Rinkel, Stateler, Tuttle, Vinsonhaler, Warren, White, Woodard

Gamma Omicron

GAMMA OMICRON is an honorary organization for Home Economics majors organized on the campus in October, 1921. The purpose of Gamma Omicron is to give training in poise and leadership. Members are selected from the sophomore, junior, and senior classes on the basis of scholarship.

PI GAMMA MU celebrated the tenth anniversary of its founding this year. Dean Leroy Allen, national founder, was guest at several important celebrations in the East in recognition of his work which began with a group of interested students a decade ago in room 23 of Richardson Hall.



Top row: M. Viele, Adams, Armour, Deeve, Duckworth, Dungey, Doty, D. Elliott
Middle row: M. E. Elliott, Evers, G. Flook, H. Flook, D. Jones, Landon, Leighty, Nelson
Bottom row: Scott, Sponenberg, Vollweider, Wendt, White, Wills, Woolard, Wise

Kappa Omicron Phi



H. Flook
G. Flook

Armour
Kelley

Elliott
Viele

Evers
White

THE Mu Chapter of Kappa Omicron Phi, National Honorary Professional Fraternity for Home Economics majors, was organized in May, 1929. Members are selected on the basis of scholarship, initiative, leadership, and personality for the purpose of developing women with higher ideals of sane living, with a deeper appreciation of the sanctity of the American home.

Phi Epsilon Pi

PHI EPSILON PI is a pep organization started this year when three men—Don Hattan, president of the Rooters Club; Kenneth Watkins, cheer leader; and Wilbur Clark, president of the junior class—got their heads together and chose sixty men from the campus to promote pep and good sportsmanship.



Top row: K. Watkins, Watts, Geist, Priest, Goforth
Second row: Swoyer, Cowan, L. Davis, Warren, Harp, Erwin, Gardner, Jones, Mossman
Third row: Stocking, Hollibaugh, C. Watkins, Moreland, Miller, York, Dickerson, Wi. Hodges, We. Hodges
Fourth row: Duffy, Keller, Weir, Williams, Johnston, Burden, Branine, Boles
Bottom row: Van Valkenberg, Sponenberg, Warner, Buss, Clark, Hattan, Thompson, W. Davis

English Club



Top row: Stateler, Allen, Blair, Brakebill, Clover, Cochrum, Cowan, Creger, Curtiss, Marsh
Second row: Davidson, Davis, H. Deever, M. Deever, Earhart, Edgell, Fisher, Flook, Gardner, Giger
Third row: Gosch, Gray, Gresham, Hodges, Hoyle, Hutto, Jacques, S. Jones, W. Jones, C. Landon
Fourth row: L. Landon, Levick, Lowther, Manka, McGinnis, Miller, Odenweller, Peck, Pike, Raypholtz
Bottom row: Rogers, Shaw, Skiles, Smith, Wimberly, Wills, Wilson, Woodard, Young, Youle

THE English Club, an organization of majors in the English department, and those interested in literature, reached its maximum in a membership of sixty people this year. The interest throughout was exceedingly enthusiastic, and an amount of intense work and study made each of the monthly meetings a delightful affair.

Various phases of literature were discussed at the several meetings, including the short story, poetry, Southern literature, contemporary literature, the familiar essay, and others. A poetry contest was conducted by the club, first place going to Marian Deever, a freshman. On one occasion the dramatics department from Arkansas City Junior college presented a one-act play at the regular meeting.

Perhaps the most outstanding achievement of the club was the publication of "The Fledgling." After a trial effort last year of producing a poetry booklet, interest and plans were carried forward this year until "The Fledgling" appeared, representing over sixty poems and thirty poets. To celebrate the fiftieth anniversary of the founding of Southwestern College, former graduates from the English department were asked by the editor, Vivian Pike, to make contributions of poems to the magazine. Some of those sent in have already gained recognition in contemporary fields.

Dr. T. Reese Marsh, head of the department of language and literature, is sponsor of the English Club. Mildred Stateler is president.

Campus Players



Henderson
Swoyer

Lancaster
Pike

Graham

Warren
Jones

Martin
Watkins

THE most outstanding dramatic organization on College Hill, and one in which membership is cherished by all interested in the field of dramatic art, is The Campus Players. Members are selected after ability has been shown in Society and Little Theatre plays.

Miss Helen Graham acts as manager of the group's activities, as well as director of all performances. Her interest and unquenchable enthusiasm have kept the organization pitched to a high key of craftsmanship.

This year the group chose a murder-mystery drama for its fall production. "Criminal At Large" by the late Edgar Wallace enjoyed a good reception both from the Homecoming audience and the Lyceum constituency at Cedar Vale, Kansas.

George Lancaster has served as president of Campus Players this year, Gerald Warren as business manager, and Vivian Pike as secretary.



Leneans

THE Leneans, religious dramatic organization, were organized under the direction of Miss Edith Dielmann of the Southwestern School of Fine Arts in 1927. Each year they have given a new play at various places in the Southwestern Kansas Conference, both in churches and as a Lyceum number.

This year the members chose and have presented the play "Paul and Thekla." The production has been named by many as the best drama that The Leneans have staged in all their history. Everywhere it has won approval.

The play centers around Paul's work in Iconium, where he is converting people to Christianity, among whom is Thekla, the first woman martyr. During his stay in Iconium, Paul

is thrown into prison by Thekla's lover. The story ends with Thekla's accepting Christianity and following Paul.

THE CAST

Paul	Royal Curry
Thekla	Harriet Kelley
Demas	Steven Johnson
Castellius	Raymond Page
Lucius	Kenneth Franks
Thamyris	William Hollibaugh
Theoclia	Elda Edsall
Chloe	Maxine Gresham
Omesiphorus	Steven Johnson
Lectra	Flora Alice Blair

Raymond Page is president of The Leneans, and Kenneth Franks is the business manager.



Hollibaugh

Edsall
Curry

Page

Blair
Kelley

Johnson
Gresham

Franks

A Cappella Choir

THE most important of Southwestern's choral efforts is the A Cappella Choir, which was organized by Harold S. Dyer in 1926. Its progress and development have been startling under the praiseworthy leadership of its directors.

In 1929, Professor Haydn Owens, a prominent choral conductor of Chicago, took over the management of the choir. In the three following years, by making extended tours through the eastern and mid-western states, Professor Owens raised the choir to national prominence. It received high praise from metropolitan critics and was rated as one of the three best choirs of its kind in the United States.

Since that time the choral group has been holding its reputation through the leadership of Dean H. Hugh Altwater, Dean of Fine Arts

of Southwestern, and Professor Allan F. Schirmer, of Chicago, who now holds the directorship of the choir.

It has been the aim and purpose of the A Cappella Choir to give to students the advantage of studying and producing the highest type of choral music, including the Russian liturgical music, English classics, modern choral works, and Negro spirituals. The choir has been an immense influence in the development of the musical life in this part of the state.

Robert Davidson has served as business manager for the past year, arranging tours in the conference and in neighboring states. The first semester, Howard Farrar served as student director, and Edward Hotton held that position the second.



Top row: Hayse, Morgan, Edgell, Harp, Geist, Green, Reese, Miller, Matthews, Henderson, Collier, E. Stocking, Wilmoth, Bobst
Second row: Moore, Curry, Brooks, M. Viele, M. Stocking, Watts, Ainsworth, Lehman, Burden, Nurse, Stephenson, Trumbull, Hovgard
Third row: Lent, Mathes, C. Landon, White, Van Valkenberg, Hotton, Emmitt, Farrar, M. Wilson, Molz, Talbot, Blowey
Fourth row: Eslinger, H. Deever, Miller, Stateler, Freeman, Schirmer, L. Viele, Elliott, D. Wilson, Fisher, Odeweller

Symphony Orchestra

ONE of the most important and best-known musical organizations of Southwestern College is the Symphony Orchestra. It is under the leadership of Dean H. Hugh Altvater with Prof. C. O. Brown assisting. The orchestra has gained wide recognition through the excellent concerts, in which the more serious symphonic scores have been performed.

The orchestra is composed of some fifty well-trained musicians, who derive great benefits from the opportunity to work in a fully developed symphony group.

This year the community has had the privilege of hearing the organization in

five major concerts. The highly disciplined players have performed difficult symphonies by Beethoven and Brahms, with preludes from various Wagnerian operas. Another outstanding activity of the orchestra is its use as an accompanying medium for concertos. This year, Tschaikowsky's "Concerto in B flat minor" was presented with a high degree of success.

A major task of the symphony orchestra is its appearance with the Winfield Oratorio Society in the presentation of the "Elijah." The marked degree of perfection of the orchestral accompaniment did much to make the performance the success it was.



Band

ALWAYS out in front at Southwestern is the Southwestern College Band, under the direction of Prof. C. O. Brown. It has attained an enviable standing among concert bands throughout the cities in this section.

In 1924, Professor Brown took the band on its first concert tour, and since then it has assumed an active part in concerts over this territory, attaining success everywhere. Through the efforts of its director, the standard of band music has been raised to a higher level than ever before.

With snappy purple and white uniforms, these forty-five members form an organization that is quite typical of the Spirit of Southwestern and is one of the chief promoters of pep at all football and basket ball games, and pep Chapels. It also presents several concert Chapels during the school year.

No other one organization on College Hill performs the service that the band does. It is at the beck and call, willingly, of all who might need it. Its director is the friend of all, a wonderful co-operator in any community or college enterprise.



Top row: Dawson, Bean, Brown, Rose
Second row: Hodges, Hayes, Hilfinger, Erwin, Van Valkenberg, Morris
Third row: Stutzman, Taylor, McClaren, Burden, Hayes
Fourth row: Talbot, Priest, Courtney, Buss, Nurse, Hagan
Fifth row: Jones, Manny, Sallee, Reese, Hattan, Washburn
Bottom row: Hadley, Wilson, Savage, Yount, Lehman

Builderettes



Top row: Avary, Adams, Armour, Blair, Colborn, Flaherty, G. Flook, H. Flook
Middle row: Henthorne, Hinshaw, Hodges, Hoyle, Hutto, L. Johnson, D. Jones, Lawson
Bottom row: McKnight, Milliken, Nelson, Richardson, Rohl, Scott, Sponenberg, Woodard

INTEREST in athletics for girls, physical efficiency, and good sportsmanship are promoted by the Builderettes, an honorary athletic organization under the auspices of the Women's Athletic Association. Girls who have won special distinction in women's athletics are entitled to be members of the Builderettes. They are recognized by their black sweaters with the insignia of a white hammer on a script "S". The Builderettes are a part of the W. A. A. and work in conjunction with that association. Points won in W. A. A. activities, by participation in sports, are applied to the Builderettes, qualifications for membership being the earning of 300 W. A. A. points.

Points are made by taking part in sports, by playing in W. A. A. tournaments, by the observance of hiking and health rules, and by good scholarship. Various awards are given by the W. A. A. after a definite number of points have been earned. For a thousand points, a purple "S" is awarded; for 1,500, a white "S" sweater; and for 2,000 points the highest award made

is a purple blanket. Myrtle Adams has earned this highest award. Myrtle Adams and LaVerna Sponenberg have both earned white sweaters.

Both the W. A. A. and the Builderettes are comparatively recent organizations, the W. A. A. being organized in 1924, and the Builderettes, in 1927. The W. A. A. is an athletic society for which any girl is eligible. Miss Lillian Cloud, physical education instructor for women, is sponsor of both organizations. Virginia McKnight, president of the Builderettes, works with the officers of the W. A. A.: Myrtle Adams, president; Dorothy Jones, vice-president; Jean Colborn, secretary-treasurer.

The Women's Athletic Association sponsors many athletic activities of the college, in addition to aiding the student to keep herself physically fit. Tournaments of all kinds are held. Play Day, an annual day when members of the Girls' Athletic Associations from many high schools surrounding Winfield are invited to enjoy a day of sports and exercise at Stewart Gymnasium, is under the association's auspices.

Jinx Janes



Top row: S. Johnson, D. Elliott, Basore, P. Kelley, Hovgard, Gillespie
 Second row: Looney, Talbot, Geesling, Stout, Suits, H. Whitwam, Klinger, Leighty, Hildinger
 Third row: Dobson, Washburn, Friend, Molz, Parker, Crawford, Hutchison, Meade, Gilmore
 Fourth row: Courtney, W. Jones, Ayers, King, D. Whitwam, Landon, Lynn, S. Jones, Paton
 Fifth row: Freeman, Clift, Buhler, H. Kelley, Blair, Stuber, Lowther, Flook, McManus, Peck
 Bottom row: Hawkins, Odenweller, McKnight, Plummer, Allen, Zimmerman, White, Murphy, Baty

AN IDEA, formulated in the minds of a small group of girls, became a reality in the organizing of the Jinx Janes pep club on Southwestern campus this year. The organizers, Annabeth Odenweller and Ruth Allen, elected twenty-one charter members, and called the first meeting on Sunday afternoon, November 25, at the Odenweller home. Miss Odenweller, as chairman, presided, and the following officers were elected: Betty Lu Lynn, president; Betty Lowther, secretary; Sylva Jones, program chairman; Esther Stuber, cheer leader.

At a meeting, held on December 9, in the home of the president, Miss Lynn, the club adopted as their official costume, a white sweater, bearing the head of the purple jinx on the front, dark skirt, white hat or cap, and white gloves. Plans were made for the first rush party to be held on December 15.

Thirty-four girls received invitations to the buffet-supper held in Student Union at 6:30 on Saturday, December 15. Lucille Shaver played popular music at the piano during the

supper, consisting of sandwiches, cranberry salad, ice-cream, and cakes decorated with a sprig of holly on which was tied a note inviting each girl to become a member of the Jinx Janes. Professor Helen Graham, faculty sponsor of the new club, presided over the tea service. Annabeth Odenweller, singing several popular songs, and Sylva Jones, who read a short play, presented the brief program that followed the supper.

Jinx Janes made its first appearance on the night of the Wichita University basket ball game. The girls illustrated the different yells by using placards bearing letters. Other placards formed the letters "SC" and, when reversed, took the form of the purple jinx. Jinx Janes appeared three more times, presenting stunts and drills, sometimes in cooperation with the Southwestern Band.

The purpose of the Jinx Janes is to promote pep in the student body by being peppy. It is democratic and attempts to represent the whole school in its membership. It is not a social organization, but functions only at games.

K. K. Pep Club



Top row: Hensley, Brooks, Colborn, Cooper, Ewbank, Flaherty, Moore
Middle row: Flook, Graber, Gresham, Hill, Husted, Le Marr, McIntire, Morris
Bottom row: Peacock, M. Pike, V. Pike, Smischny, Stateler, Trumbull, Wilmer, Young

FOURTEEN spirited girls organized the K. K. Pep Club in 1928, thinking that there was need for a recognized pep group. Selections for membership are based on personality, friendliness, attendance at games, and general enthusiasm. Scholarship is one of the first requirements for membership.

The club enjoys a rush week during the time new members are admitted, and a formal dinner in the spring. Activities include organized co-operation with the cheer leaders at games, pep stunts, and one

assembly program each year. This year the membership was increased to twenty-four, by action of the faculty. The club proposes to create friendliness among girls and to act as agent to the cheer leaders responding at games. Inez Hensley was president the first semester and Mary Darlene Moore the second semester.

Thus far, the meaning of the initials K. K. has been kept as a secret and very few students have come to know what they mean.

Personnel Department



Top row: Reese, White, Marsh, Cloud, Curry, Farrar, Franks, Gardner

Middle row: Manka, Moreland, Mossman, Reese, Snyder, Stocking, Swoyer, Warren, Adams

Bottom row: Armour, Dobson, G. Flook, H. Flook, Dungey, Landon, Leighty, Lowther, McKnight, Young

THE Student Personnel Department of Southwestern College is under the direct supervision of W. P. Reese, dean of men. It was organized in the spring of 1933 and was put into operation in the fall of 1934. The Personnel Council consists of the dean of men, the dean of women, two other faculty members, and twenty-four upper-class students who serve as counselors of specified groups of students, especially of freshmen. Each student counselor has approximately ten students whom he advises, helps, and associates with.

The primary purpose of the organization is the development of well-rounded personalities. Three fields of personality interest have demanded the attention of the director and his staff—the educational, the social, and the spiritual. Particular at-

tention has been given to such matters as orientation of new students, proper housing of all students, the social and religious life of the college community, educational and vocational guidance, placement service, personnel records, and the student's personal problems.

To the casual observer the work of the department is, perhaps, not apparent because, by the very nature of its problems, it must be carried on quietly and unobtrusively. The effects of the endeavors of the council, however, are both subtle and far-reaching. The romance of life may be read in every phase of the work being done. The dividends are already accumulating in terms of happier and more effectively integrated lives.

Oxford Fellowship



Top row: Curry, Allen, Blood, Brown, Cooper, Cowan, Dawson, Deever

Middle row: Hayes, Hughes, Halbert, Jones, Karlowski, McGhee, H. Morgan, J. Morgan, Meier

Bottom row: Rinkel, Shaw, Stewart, Stocking, Washburn, Weir, Wilson, R. Zimmerman, V. Zimmerman

Cosmopolitan Club

"**A**BOVE all nations is humanity," is the motto of the Cosmopolitan Club, organized in 1927 to provide a social life for the foreign students.

Membership is limited to thirty, ten per cent of which must be foreign students. Two meetings are held each month. This winter the local club joined the National Association of Cosmopolitan Clubs and sent a delegation to the national convention, held at Kansas University.

Miss Emily Ericsson is the faculty sponsor of the club.

ORGANIZED in 1919, the Oxford Club proposed to promote the challenge of the Christian ministry by giving mutual aid, encouragement, and inspiration to all students pledged to the ministry as a life work. The name of the organization was changed to the Oxford Fellowship in 1926, and Southwestern received its charter in 1926. There were nine charter members, all of whom are now either ministers or in seminaries.

For the first time in the club's history, women were admitted into membership this year. Pastors of Winfield churches and professors spoke before the group at various times.



Top row: Ortiz, Adams, Coe, Cottom, Cochran, Edwards

Middle row: Ericsson, Elliott, Freeman, Gresham, Holland, Jones, Landon, McLaurin

Bottom row: McLaurin, Menendez, Mossman, Rosales, Shaw, Smith, Stewart, Weir

Y. W. C. A.



Top row: Deever, Elliott, Wise, Raypholtz, White
Middle row: Armour, Adams, Blair, G. Flook, H. Flook, Gresham, Hodges, Kelley
Bottom row: Lent, Lowther, McKnight, Miller, Parker, Shaw, Stateler, Wills

THE Young Women's Christian Association is a religious organization whose goal is the promotion of friendliness and worthwhile Christian living. It spreads its influence by functioning through the Cosmopolitan Club, Campus Sister programs, and the Mexican Night School, in addition to the weekly meetings and morning worship periods. The cabinet for 1934 consists of: Hazel Deever, president; Vera Mae Elliott, vice-president; Beulah Raypholtz, secretary; Winona Wise, treasurer.

Y. M. C. A.

THE Young Men's Christian Association is made up of young men whose purpose is to promote Christian living. Meetings are held once a week to discuss problems of social and religious importance. Officers for 1934-1935 were: Edwin Stocking, president; Carl Stocking, vice-president; Kenneth Franks, secretary; Robert Thompson, treasurer.



Top row: E. Stocking, Boldt, Clover, Cowan, Farrar, Marsh
Bottom row: Franks, Halbert, Holland, Meier, Rinkel, C. Stocking, Thompson

Grace Church Choir



Allan F. Schirmer

GRACE Church Choir, under the direction of Allan Faber Schirmer, is one of the outstanding church choirs in Winfield. Drawing its musical talent directly from the student body of Southwestern, it presents a unity of organization so essential to fine production. The majority of the members are music students in the School of Fine Arts and under the direct supervision of Mr. Schirmer.

Student soloists took leading parts in the monthly concerts presented at the evening worship hours. A special Christmas Carol service was featured before the holiday season in the first

semester and a delightful program of sacred Easter music the second.

Mr. Schirmer has a wide knowledge of choral conducting, especially in church choir and A Cappella work. For a number of years he was leading soloist at First Methodist church, Evanston, Illinois, while attending Northwestern University.

Miss Grace Sellers, organist of the choir, has served faithfully many years at this position. Throughout the year she rendered difficult and technical musical scores with such skill and magnificence that even the most exacting of directors could find no fault in her work.



Grace Sellers



Top row: Watts, M. Stocking, Van Valkenberg, Hayse, Edgell, Thompson, Geist, Harp, Collier, L. Miller, Matthews, Green, E. Stocking, L. Wilson, Hodges, Brown, Bobst, Wright, Fronk
Middle row: White, Selle, Mathes, Courtney, Hall, Gilbert, Woodward, M. Matthews, Nevens, Nurse, Hays, Molz, D. Wilson, N. Niles, I. Hinshaw, Talbot, Jacques
Bottom row: G. Hinshaw, Smith, Ormes, Deever, Eslinger, Curry, M. Viele, Freeman, Sellers, Schirmer, Hovgard, Blowey, M. Wilson, Unruh, L. Niles, Wing, Elliott, L. Viele

Epworth League

THE Epworth League of Grace Methodist church provides a splendid opportunity for developing Christian leadership. The membership is open to all students.

During both semesters, with Iden Reese and Lowell Miller as presidents, the League worked progressively on a program, "Youth Building a New World." This movement, which has become international, includes all Christian Youth agencies. In March, Dr. Blaine E. Kirkpatrick was brought to Winfield for an address. The year ended with the second Epworth League Institute which last year totaled in attendance more than twelve hundred.



Alvin W. Murray

The Reverend Alvin W. Murray began his work as pastor of Grace church the first part of September. Ten years out of Southwestern College, his advanced study completed at Drew Theological Seminary, and a successful pastor at Boise City, Oklahoma, he is the youngest pastor to reach Grace church in many years. Received by young and old with respect and admiration, in his first year of work he has made rapid progress in building a higher and better spiritual atmosphere on the Hill.

Max Weir, assistant to the pastor, has proved himself an outstanding leader of young people. He supervised the college department of the Sunday School and the Epworth League.



Max Weir



Miller
Jones
Eslinger

Reese
Davidson
Cowan

Elliott
Peter
H. Flook

Washburn
Dawson
Colborn

Blair
Haro
Parker

Davis
Ramsdale
Wi. Hodges

We. Hodges
Meier
Lent

Burning Torch

Rocky hill, and climbing steps,
Spreading fir trees, pebbled walks,
Old stone building, looking down
On the valley and the town;
There the sunset lingers long
In a glowing evensong,
And the valley sees a cup,
A waiting chalice lifted up
Wherein Beauty comes to sup.

Sunset Hill, your founders knew
You would stand, grow beautiful,
Serve your purpose, truly great,
Inspire the youth you educate;
Yet they scarcely could have known,
What rich treasures time has sown,
May they see, this golden year,
That the torch they fashioned here
Burns toward God—a challenger clear.

—Maxine Gresham and Charlotte Landon

Alma Mater

Far above the Walnut Valley,
On a lofty height,
Stands our noble Alma Mater,
Bathed in golden light.

Lift the chorus, speed it onward,
Over hill and dale,
Hail to thee, beloved Southwestern!
Alma Mater, Hail!

Far above the stir and bustle
Of the busy town,
Reared against the arch of heaven,
Looks she calmly down.

To the heights she calls us daily,
Alma Mater, dear,
Heights of knowledge, hope and courage,
Free from doubt and fear.

—Florence Cate in 1907

Old North Hall

Firmly you stand
In the afternoon sunlight;
Aging stone
And stained-glass windows,
Relic of the old,
Symbol of the new Southwestern!

Mystically you stand
In the twilight
Diffused with the glow
Of a fading sunset,
Form of the old,
Spirit of the new Southwestern!

Lonely you stand,
For a newer, less noble
Structure has supplanted you
On the hill,
Memento of the old,
Part of the new Southwestern!

—Graydon Wilson

BOOK THREE

Tho' Richardson's swell, and
so's North Hall,
We like the gym the best
of all . . .

That's the place they cooked
our goose:
Showed us elk—and fed us
moose! . . .



Say, what are these? Collegians or tramps? . . .



27168

THE MEMORIAL LIBRARY
Southwestern College
Winfield, Kansas

Receives Y. M. C. A. Award



Virgil Moreland
Y. M. C. A. Award

Virgil, throughout his college career, has manifested a leadership that has this year placed him in the fore and he has received the Y. M. C. A. award as a recognition of his worth. A letter man in football and track several times, a high-ranking student, a friend, an efficient worker—these and more are his accomplishments. This year he has guided the Student Council and the Student Body.



Homecoming Queen

Miss Mildred Stateler Homecoming Queen

With the freshness of prairie breezes, "Midge" blends vivacious spirit with glowing radiance into proud beauty. Her many accomplishments are outnumbered only by the fields in which she utilizes them.

Queen of May



Miss Betty Lowther

Queen of May

A charming combination of fragile loveliness and wistful beauty, Betty reigns in the realm of friendliness as well as over the May Fete activities.



Campus Leaders

Betty Lowther

Max Weir

Virgil Moreland

Mildred Stateler

Wilbur Clark

Vivian Pike



BOOK FOUR
ATHLETICS

A
Gym
even
of a

dire
Wo
elev
est
to s

the
org
bar
aw
in
and
ha
be
clu
po
res
po

ca
Ca

the

Athletics

A FULL program of athletics for men and women is carried on. In the spacious Stewart Gym, on the track and gridiron on Alumni Field, every day are hundreds participating in sports of all kinds.

Under the leadership of Miss Lillian Cloud, director of physical education for women, the Women's Athletic Association was organized eleven years ago. Its purpose is to promote interest and good sportsmanship among women and to stimulate pep for all college activities.



Lillian Cloud

All the women's athletics are sponsored by the W. A. A. Intramural and class teams were organized in volley ball, basket ball, baseball, badminton, tennis, and ring tennis. Points were awarded in these activities and for hiking, keeping health rules, perfect attendance in gym classes and for scholastic achievement. When 300 points have been amassed the woman is entitled to membership in the Builderettes, the W. A. A. pep club. The White "S" sweater is given for 1500 points. The highest honor which a girl may receive is the Southwestern blanket for 2000 points.

The men's intramural program is under the capable direction of Assistant Coach Donald Cooper. Tournaments are held in basket ball,



Coach William Monypeny

golf, tennis, wrestling, and boxing. Increased interest from the spectators and participants has been noted each year since the program was begun. The winning organizations and individuals are presented with trophies and medals.

The major sports of Southwestern, football, basket ball, and track, are guided by Coach William Monypeny, aided by Assistant Coach Cooper. In these sports, Southwestern engages in intercollegiate competition, making excellent showings in all of them.



Donald Cooper

Football



Martin (Baldy) Ossowski
Co-Captain

SOUTHWESTERN'S 1934 football record lists five games won and five games lost. In non-conference competition the Builders won four of the five games, and while they won only one of the five conference games, they were outgained only 10 yards and made exactly the same number of first downs, 39, as did the conference opponents. Injuries handicapped the team in two of the most important tilts of the year, Coach Mony-

peny being able to use a full-strength team in only one game. In that game Pittsburg's favored Gorillas were pushed all over the field, with Southwestern winning, 9-7. The following weeks Pittsburg beat both Wichita and Ft. Hays, the latter's only conference loss.

Co-Captains Martin Ossowski and Evan Thomas led in every contest. Ossowski was named All-Conference tackle and Thomas earned recognition as one of the best blocking backs in the central. Ossowski was a unanimous choice for All-Conference tackle, the second time he has received that honor.

Bethany college invaded Winfield for the opener and was turned back by the crushing score of 44-0. The Swede's farthest penetration into Builder territory was to the 28-yard line.

For the first time in the history of Southwestern's football rivalry with the College of Emporia, the Builders defeated the Presbies on their own field. Clyde (Big) Lockert dashed 15 yards around end for the only touchdown of the game as the Purple won, 7-0. Dick Baltzell's 90-yard punt that went out of bounds on the C. of E. 7-yard line was the feature of the game.

Washburn college opened the Central season with a 6-0 win over the Builders in a night game at Topeka. The Ichabods scored in the first quarter on a pass. Although the Southwesterners outgained Washburn 175 yards to 109, they were unable to score.



Front row: Cooper, Fabian, Broedie, Thomas, Floyd, Wright, Williams, W. Baltzell, Brown, Vic Baltzell, Bob Baltzell, Noel

Second row: V. Clark, Foust, King, Ossowski, Henry, Monypeny, Lockert, Urban, Mayse, Simpson, Kaufman, Davis, Howard

Third row: Robinson, Krell, Stude, Corp, Hoyle, Rhoades, Holland, Osterhout, Cowan, Ayres, Matlack, Wimberly

Back row: Harman, Duffy, Dryden, Brooks, Hodges, Kitch, W. Clark, Major

Football

Highlight of the season was the Builder's victory over the Pittsburg Teachers. Pittsburg led at the half, 7-0, after Baltzell's punt was blocked and covered by Nylec of Pittsburg back of the Builder goal line. The Purple came back fighting in the second half and pushed the Gorillas back to their own goal line to score two points on a safety, Fabian making the tackle. Soon after this Ray Overeem carried the ball 70 yards through the Pitt team to score the winning points. He kicked goal to make the score 9-7. This, the only conference victory, showed the team clicking perfectly through three-quarters of the game, and bottling up Pittsburg's vaunted passing attack.

An easy triumph over the Panhandle Aggies at Goodwell, Okla., followed the Pittsburg game. Lockert, Urban, and Mayse, hard-hitting freshman fullback, scored touchdowns, and Overeem added one point from placement to make the score 19-6.

Homecoming Day brought the Emporia Teachers to mud-soaked Alumni Field. The Builders lost by 9-7, but put up a battle all through the game. Emporia's speedy Crooms and plunging fullback, Fraley, sifted through the Southwestern line time after time in midfield but were stopped cold near the Builder goal line. Joe Urban slipped off tackle 25 yards without interference for the Builder score.

A week of inter-campus raids was followed by Wichita University's 25-0 defeat of Southwestern before a crowd of 5,000 at Wichita. Southwestern held the Shockers to a lone score the first half, that on a 40-yard pass, but weakened in the second half to let across three more touchdowns. Bob Baltzell and Ossowski stood out in the Builder line, and Dick Baltzell pulled the



Evan Thomas
Co-Captain

Builders out of a bad hole with a 75-yard punt over the Wichita safety's head.

A long journey to Mangum, Okla., took the Southwestern squad to an 18-9 defeat by the Southwestern Oklahoma Teachers.

Ft. Hays brought a championship team and "Cocky" Sexton to Winfield for the game that decided the Central Conference championship. Hays had been beaten by Pittsburg, the only team Southwestern had beaten. Sexton, given honorable mention on several All-American teams and captain of the All-Conference team, led the Tigers to a 20-6 victory and their first championship.

Southwestern closed the season as it was begun, with an easy victory over Friends, Thanksgiving Day, by two touchdowns and extra points.



Basket Ball



Caywood

Bryan

Urban

Farmer

Yergler

Schiefelbine

BY CASTING just an offhand glance at the record of eleven victories and ten defeats the 1934-35 cage team has made, one might come to the conclusion that the Builders experienced only a mediocre season. However, by revealing that they tied with the Pittsburg Gorillas for the coveted first-place berth of the Central Conference as well as winning both of the conference games played with their old court rivals, the Emporia Teachers, an entirely new opinion may be formed.

A total of 21 games were played by the Purple with outstanding teams of Kansas, Oklahoma and Missouri. Led by Captain Caywood,

center, who tallied 193 points, Southwestern scored a total of 650 points to their opponents' 615. The Builders averaged 30.9 points per game while their opposition scored 29.3. The going was made tough for the Moundbuilders and injuries and measles found their way into the ranks, adding to their hardships in a large way.

The Builders officially opened their season on December 17, when they journeyed down to Alva, Oklahoma, for a game with the Northwestern Oklahoma Teachers. The game was forced into an overtime period with the Sooners taking the decision, 48 to 37. However, the Purple began hitting its stride and took the next two games. Washburn, a member of the Missouri Valley, and Oklahoma City University were the victims. The East Central Teachers of Ada, Oklahoma, then came to Winfield and abruptly ended the winning streak of the locals, winning 38 to 25.

On December 31, the Southwestern intercollegiate "warm-up" tournament under the direction of Coach Bill Monypeny began. The Builders met and defeated the College of Emporia, from the Kansas loop, 34 to 27. The next evening a game was lost to the strong Springfield (Mo.) Teachers, 28 to 23, in a close and fast contest. On the third and fourth nights, the Purple team coasted to easy victories over a pair of Kansas conference members, Ottawa university and McPherson college, 36 to 22 and 35 to 26, respectively. Following the tournament, Oklahoma City University was met in a return game on the Goldbug court with the Sooners winning, 18 to 14, in a defensive battle.

On January 15, Southwestern started on its hard-fought trek toward the championship of the Central by winning over Wichita university, 44 to 28, on the Shocker floor. However, four days later Pittsburg forced the Builders into the defeat column, winning a 28-to-25 victory at Pittsburg. The Purple team went outside the conference for competition in their next game and defeated Phillips university, 35 to 33, in an overtime tilt played in Stewart gym.

Then came a series of two games played with Coach Trusler's Emporia Teachers. In the first game, which was an exhibition affair, and did not count in the standing, S. C. lost, 32 to 31, in an overtime affair. However, the following night

Basket Ball

the Monypeny crew got sweet revenge by winning the game that counted as a conference game, 39 to 36. This also was an overtime tilt.

About this time injuries and measles began to take their toll and Southwestern dropped her next two conference games. With Richard Farmer, a forward, out with injuries and Leonard Schiefelbine, a guard, sustaining a twisted knee in the first part of the game that kept him out for the remainder of the season, the Builders went down before the Yellow and Black of W. U., 30 to 27, on the Winfield court. A week later, with the other guard, Bill Porter, out with the measles, S. C. lost a one-point fracas to the leading Pittsburg five, 27 to 26. Fort Hays State then came to Winfield, and, after holding a 15-7 margin at the half, fell before the offensive attack of the Builders in the final stanza to lose, 24 to 27.

The Emporia Teachers came to Southwestern for another two-game series. The Hornets took the exhibition game, 43 to 33, led by their great center, Jerome Carroll. The second game saw Southwestern retaliating to the tune of 30 to 28. A return game at Enid with Phillips University saw the Builders fall before the Haymakers, 25 to 34.

Along toward the middle of February it appeared that Pittsburg with a conference record of five victories and no defeats was to sit alone unchallenged upon the top rung of the Central. She had only to win one of her three remaining conference games to clinch the title. Southwestern, on the other hand, with a record of four victories and three set-backs looked rather hopeless as a title contender.

The Builders had only one more conference game to play and were considered to have only a remote possibility of tying the Gorillas for the championship. However, as things turned out, this possibility materialized as Pittsburg met three straight defeats at the hands of Wichita U., Fort Hays, and Emporia, while Southwestern defeated Fort Hays, thus leaving both schools with five wins and three defeats.

The members of this victorious squad are: forwards—Joe Urban, Cullison; Co-captain-elect, Earl Bryan, Cullison; Richard Farmer, Pratt; Richard Nichols, Winfield; and Merwin Deever, Sedgwick; centers—Captain Gerald Caywood,

Porter

Deever

Clark

Rutter

Adams

Nichols



Winfield; Neil Adams, Sun City; guards—Willis Rutter, Geuda Springs; John Yergler, Viola; Vernon Clark, Winfield; Co-captain-elect, Bill Porter, Winfield; and Leonard Schiefelbine, Norwich.

Another winning team next year would not be surprising as not a man is lost to the team through graduation. Earl Bryan and Bill Porter have been elected to lead their teammates for 1935-36 season. Both are qualified for leadership and were this year two of the steadiest and most consistent men on the team. Coach Monypeny presented a well-balanced and a hard-fighting team this year deserving of much praise and credit.

Track

SOUTHWESTERN'S 1935 track team included several consistent point winners and several promising freshmen were given excellent opportunity for competition because of lack of lettermen. In early meets, the Moundbuilders showed much power in the different events, the strength lying mainly in the field events due to the presence of several veterans. In running, the team was about average and the sprinters were always finishing well up to the front in all their races. The distance men were scarce but those who were out were consistent runners.

Melvin Robinson, Clay Smith, Richard Nichols, and Paul Branine carried on in the sprints. Some of these boys hung up some good marks in the shorter races.

In the quarter-mile event, Southwestern had one of the best men in Southern Kansas in the person of Homer Mossman, who could always be depended upon for top points. Kenneth Fabian, Richard Nichols, and Olen Erwin were his track mates in this event and these four made one of the fastest relay teams in the state.

The half-mile found a quartet of fast boys who were very good men. Dwight Holt, Olen Erwin, Wendell Davis, and John Morgan were the runners.

One- and two-mile distances were run by Dwight Holt and Delmar Caywood. These two boys were both capable performers and Holt was one of the best men in the Central circuit. Caywood, a freshman, has chances of developing into a point-winner.

Much could be said about the men in the field events. The star performer was John Yergler, who time after time placed first in three events and carried off scoring honors. He threw the shot, javelin, and discus. Wayne Brooks and Clay Smith were capable performers with the javelin. Victor Baltzell, Martin Ossowski and Karl Webber put the shot and threw the discus.

Waldo Zerger developed into a good high-jumper and crossed the bar at six feet regularly. He was matched along with Kenneth Kaufman. Kaufman competed in the pole vault along with Joe Urban.

Willis Rutter, freshman, was one of the best timber-toppers in the country. He clipped the boards in fast time on numerous occasions. Victor Edgell was the other entrant.

The broad jump found Glenn Ainsworth, Baltzell, and Kaufman in action.



Top row: Lake, Cleghorn, Smith, Rutter, Yergler, Ossowski, Mossman, Erwin, Zerger, Morgan
Middle row: Cooper, Holt, Urban, Fabian, Nichols, Kaufman, Monypeny
Bottom row: Brooks, Robinson, Caywood, Branine, Edgell

Intramurals

Final Standing, Basket Ball

	Won	Lost
Y. M. C. A., "A"	7	0
Athens, "A"	5	2
Delphi, "A"	5	2
Laconian, "A"	3	4
Y. M. C. A., "B"	3	4
Delphi, "B"	2	5
Laconian, "B"	2	5
Athens, "B"	1	6

All League Teams

First		Second
Hinshaw, YA	f	Lake, DA
Dickerson, LA	f	Jones, YA
Smith, DA	c	Quinby, YA
Boldt, YA	g	Holman, AA
Watkins, AA	g	Broadie, DA

Boxing

	Soci- ety	Weight Class
Wilbur Dunkelberger	Y	1st
Delmar Caywood	D	2nd
Willfred Hodges	D	1st
Wilbur Dunkelberger	Y	2nd
Edgar Hinshaw	Y	3rd
James Robertson	Y	4th
Robert Brown	A	1st
Mitchell Kingsley	Y	2nd
Victor Edgell	D	3rd
Charles Hamilton	A	4th
Lovell Stuber	A	1st
Victor Edgell	D	2nd
Frank Rosales	Y	3rd
Robert Boles	D	4th
Meredith Mayse	D	1st
Alfred Simpson	Y	2nd
Lloyd Maxwell	Y	3rd
Wendell Broadie	D	1st
Kenneth Fabian	Y	2nd
Willis Rutter	Y	3rd
Rufus Wright	L	1-2
John Yergler	A	1-2

Wrestling

	Soci- ety	
James Watts	D	1st
Wilbur Dunkelberger	Y	2nd
Delmar Caywood	D	3rd
Clarence Copley	Y	4th
James Watts	D	1st
Edgar Hinshaw	Y	2nd
Wilbur Dunkelberger	Y	3rd
Delmar Caywood	D	4th
Edgar Hinshaw	Y	1st
Glenn Ainsworth	Y	2nd
Lewis Hayse	D	3rd
Glenn Ainsworth	Y	1st
Leonard Cowan	D	2nd
Victor Edgell	D	3rd
O. W. Hodges	L	4th
Alfred Simpson	Y	1st
Earl Boldt	Y	2nd
Paul Branine	D	3rd
Kenneth Fabian	Y	1st
Earl Boldt	Y	2nd
Stanley Quinby	Y	3rd
Clay Smith	D	1st
Wilbur Clark	D	2nd
Victor Baltzell	A	3rd
Virgil Rhoades	A	4th

Y. M. C. A. Champs 1935 Basket Ball



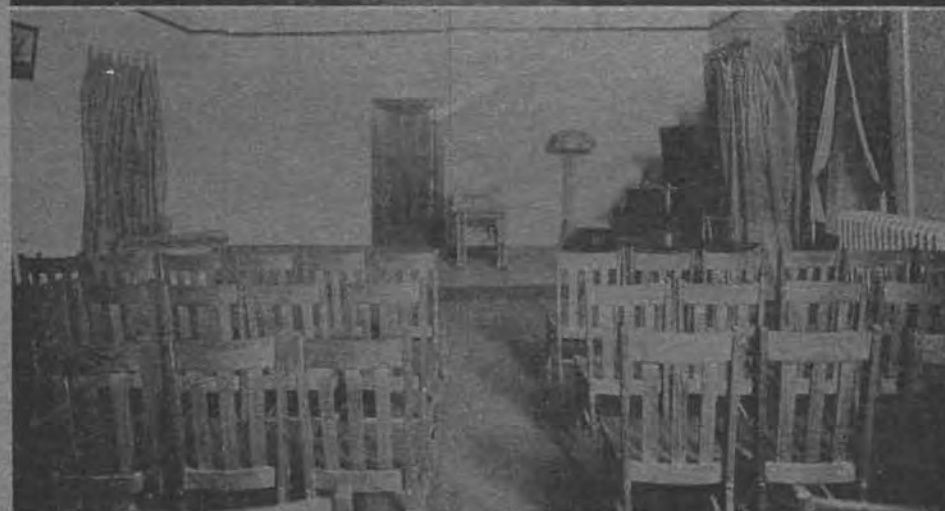
Boldt Ayres Berry Hinshaw Jones Quinby Simpson Zerger

All-Time Southwestern Football Record--1904-1934--Compiled by Delmar Caywood, '38

Southwestern Scores Given First
From Moundbuilders, Southwestern Collegian, Winfield Courier

	'04	'05	'06	'07	'08	'09	'10	'11	'12	'13	'14	'15	'16	'17	'18	'19
Alva.....	24,17		10,6	26,0						21,13	13,14	0,13	20,10	13,7		7,14
Baker.....		0,12	0,17	64,0	18,0;10,5	7,0	0,48								35,0	0,14
Chilocco.....					17,0	0,0	5,17	3,11	7,26	10,28		10,14	2,19	16,14	21,35	14,7
C. of E.....			0,6			6,6	0,0	0,17	41,3	29,7	0,20	3,0	28,6	7,0		20,0
Emporia.....		0,11	6,18	11,18	0,17				151,0		0,16	13,20	13,7			7,6
Fairmount.....	0,11		0,10	34,0	10,5											
Friends.....	9,0		6,10			Edmond	15,0									
Helena.....			17,0													
K. C. Mcd.....				6,6												
K. S. A. C.....					0,17	0,60		6,6	7,19	13,10	0,15	0,67	0,53			
Lamont.....	0,5															
O. A. M.....	22,0											Bethany	20,0	7,0	20,7	27,7
O. C. U.....			6,0	0,6	17,0	5,0	16,59					27,0				
Ottawa U.....			0,0		0,5	0,12	34,5	34,7	47,0							
Phillips.....					0,0				75,0		0,22		7,0			
Pittsburg.....			24,0			0,9	6,0		12,7	27,0						
St. Marys.....						44,6	7,2	7,6	6,6	26,0	14,7	21,28				10,13
Sterling.....				12,17		6,5	32,7		9,7							
Tonkawa.....	0,5	0,12					41,0	7,0	2,7	7,7	6,0	38,7	44,6	39,6		
Wellington.....	6,0; 17,5	5,0	21,0										Hays	20,23	10,0	
Winfield.....	0,12	6,0														
Okla. Bapt.....	0,0	0,5														
		12,0					47,3					21,0				

	'20	'21	'22	'23	'24	'25	'26	'27	'28	'29	'30	'31	'32	'33	'34
Alva.....				14,0									19,0		
Baker.....	0,13		0,27			13,7	0,7	8,20							
Bethany.....	0,29	10,7	10,6	19,6	9,0										44,0
Bethel.....								26,0							
Chilocco.....		28,0													
C. of E.....	0,54	0,14	7,7	0,6	12,0	0,27	0,13		0,19	13,2	0,0	12,0	0,0	6,6	7,0
Edmond.....					6,0				0,7	0,0		7,13			
Emporia.....	13,7	0,62	13,41	7,10	0,0	6,0	0,42	0,43	0,0	0,13	13,27	0,12	6,0	7,19	7,9
Fairmount.....	0,0	7,0	0,0	0,0	13,13	7,13	0,17	7,6	WU0,7	0,13	7,18	6,7	0,19	16,27	0,25
Friends.....	7,28	10,7	29,9	7,20	14,0	0,6		16,7	16,7	0,3	13,7	20,0	49,0	38,0	14,0
Hays.....		7,14							0,0	6,19	21,0		0,10	15,19	7,20
O. A. M.....	7,7														
McPherson.....			12,6	0,6				21,7							
Oklahoma Baptists.....					14,6						18,19	12,2	7,14	2,33	
O. C. U.....															19,6
Pan Agg'ies.....															
Phillips.....			7,13												
Pittsburg.....	0,28	0,14	13,6	7,7					19,0	3,0	0,20	0,6	7,7	2,12	9,7
St. John.....						20,0	21,7	28,3							
St. Marys.....						47,17				13,2			Bacone	7,14	6,18
Southwestern S. T.....							6,0								
Sterling.....	11,7	28,0	10,0		0,14	31,0	7,10	33,0	12,0	7,13	6,33	6,0	0,21	6,0	0,6
Washburn.....															



BOOK FIVE
SOCIETIES

A

form
The
orga
spea

E
or e
soci
ers' C
felt b
and
Then
"Ath

A
a ne
lady
impr
toget
teen
soci

T
Soci
share

T
memb
chos
ing a
prima
least
a mor
body

frate
trout
They
Nu
Sign
syste
of r
a re

Literary Societies Meet from the Start

By Vera Mae Elliott

AFTER the opening of the college in the fall of 1886, the Cadmus Literary Society was formed, with both men and women as members. The activities of the society were limited. Its organization at the first was to promote public speaking and oratorical contests.

Early in the spring of 1890, a group of seven or eight energetic young men organized a secret society, calling themselves "The Impromptu Speakers' Club." This was strictly a men's affair. They felt that the old Cadmus Society had degenerated and they wanted a live wire for an organization. Then, in February, the society was christened the "Athenian Literary Society."

A few weeks afterward, the suggestion for a new society for girls was made to a young lady, Miss Eleanore Hayes. Miss Hayes was impressed with the idea and promptly called together a number of women. A group of nineteen enthusiasts organized and named their new society "Belles Lettres."

The next fall, the Athenian and Belles Lettres Societies moved into their new hall, which was shared together.

The Cadmus was now the social society. Its members were few in number and carefully chosen. Nevertheless, the Athenians were growing and were taking the leadership. They were primarily a debating organization. There was at least one debate on each program. Then once a month they held open program to which everybody was invited.

In 1889, Gamma Sigma was organized. This fraternity was dropped soon because of the trouble which arose in Phi Gamma in Lawrence. They reorganized and were admitted into Sigma Nu. Finally, in 1897, the trustees decided that Sigma Nu was incompatible with the college system and the members were given the privilege of renouncing the society or leaving school. As a result, they left; the exit of the members and

others in sympathy left the college without a graduating class the next year.

The Philo-Summer Society was organized by the college and academy students because there was a need for another society. The Athenians teased them a plenty about their name—called them "Fido." They could stand it no longer; "Fido" met in executive session and changed its name to the "Delphian Society."

Feeling the need of a sister society, Delphi effected the organization of Sigma Pi Phi. Their standard at the beginning was, "Friendship, Loyalty, and Learning." This standard has been maintained during the years. Sigma has contributed much to the school life and activities.

Again, in 1920, another society was formed. This time both men's and women's groups became brother and sister societies. These were the Beta Gamma and the Alpha Beta Alpha. Because of the prestige of the two rival societies, they were not quite able to make the grade. After twelve years, they were disbanded in 1932.

In 1924, we had the birth of two more societies, the Delta Kappa Chi and Delta Theta Pi. These societies were disbanded in the fall of 1933. And in their places another society was formed, called the "Aurora-Laconia." Several members from each of the other societies were the nucleus for the venture beginning with the rush program in the fall of 1933. They have made a good record thus far and have added greatly to the spirit of the societies.

From the first, the societies have had as their goal the building of better individuals and the developing of personalities. In the beginning, this was done through debate and oratory. Later the college took that into its program, so the societies have become more social than literary.

Not much rivalry is manifested now between the societies except the Intramurals and the Little Theatre Play Contest. Much tamer sport than the color fights of the olden days!

SIGMA PI PHI

Stateler

Holecek

Levick

Amic

Armour

Basore

Bean

Bennett

Blair

Bloomfield

Brakebill

H. Brooks

C. Brooks

Cook

Courtney

Creger

Curry

F. Davis

G. Davis

M. Deever

Dieterich

Doty

Edwards

H. Elliott

Eslinger

Ewbank

Gilbert





SIGMA PI PHI

Hensley

Parker

Morris

Graber

Gray

Gresham

Hall

Hays

Heitmeyer

Hovgard

A. Johnson

E. Johnson

L. Johnson

M. Johnson

Jones

Klinger

Kingrey

C. Landon

L. Landon

Leighty

LeMarr

Lent

Lippoldt

McBride

McClure

McIntire

McSpadden

SIGMA PI PHI

M. Viele

Matthew

Milliken

Moore

Nevens

N. Niles

Nurse

Ormes

Peacock

Peck

Pike

Raypholtz

Rogers

Roth

Selle

Eleanor Shook

E. Lois Shook

Smith

Suits

Talbot

Trumbull

L. Viele

Wills

White

Youle

Young

Zimmerman





DELPHI

Warren

Kaufman

Thompson

Ainsworth

Antrim

Ayers

Bobst

Branine

Boles

Brooks

Brown

Caywood

Clark

Coe

Curtiss

J. W. Davis

W. Davis

Dawson

Deever

Dryden

Edgell

Felt

Foult

Fronk

Geist

Gray

Green

DELPHI

Gardner

Weir

Morris



Harp

Hattan

Hayes

Hayse



Henry

Hodges, J. W.

Hodges, A. W.

Holt



Hotton

Hughes

Johnson

Jones



Keller, B.

Keller, T.

Lake

Lee



Major

Manka

Martin

Matthews



Mayse

Meier

Miller

Morris





DELPHI

Broadie

Cowan

Miller

Moreland

Newland

Ramsdale

Renfrow

Richardson

Rhorer

Rinkel

Robinson

Rogers

Schiefelbine

Sewell

Simpson

Smith

Stitt

E. Stocking

M. Stocking

Stude

Wade

Watts

Wilmoth

York

Yount

Belles-Athenian Honor



Thelma Ruth Kunder

Mary Darlene Moore



Ruth Geesling

Harriet Kelley



Virginia McKnight



Kenneth Franks



Mark Swoyer



Victor Baltzell

Iden Reese



Raymond Page



BELLES LETTRES

Kunder
Geesling
McKnight

Allen
Ayers
Aultman
Adams

Buchman
Snyder
Benson
Blowey

Ballinger
Cochrum
Calvin
Craft

Cole
Crawford
Dobson
H. Duckworth

M. Duckworth
Elliott
Friend
Gilmore

Gillespie
Giger
Hammer
Henthorne

Hildinger
Hill
Haines
Hutchison

Johnson
Johnston
King
P. Kelley

BELLE

Moore

Lowther

Meads

Mundis

Parker

Runyon

Stephens

Vannatta

D. White

BELLES LETTRES

Moore

H. Kelley

Shaver

Lynn

Lowther

Looney

Lee

McManis

Meade

Molz

Mathes

Morton

Mundis

Murphy

Nesbit

Odenweller

Parker

Paton

Plummer

Robertson

Runyon

V. Stuber

E. Stuber

Stout

Stephenson

Smischny

Tull

Twyman

Vannatta

Washburn

Williams

Wilmer

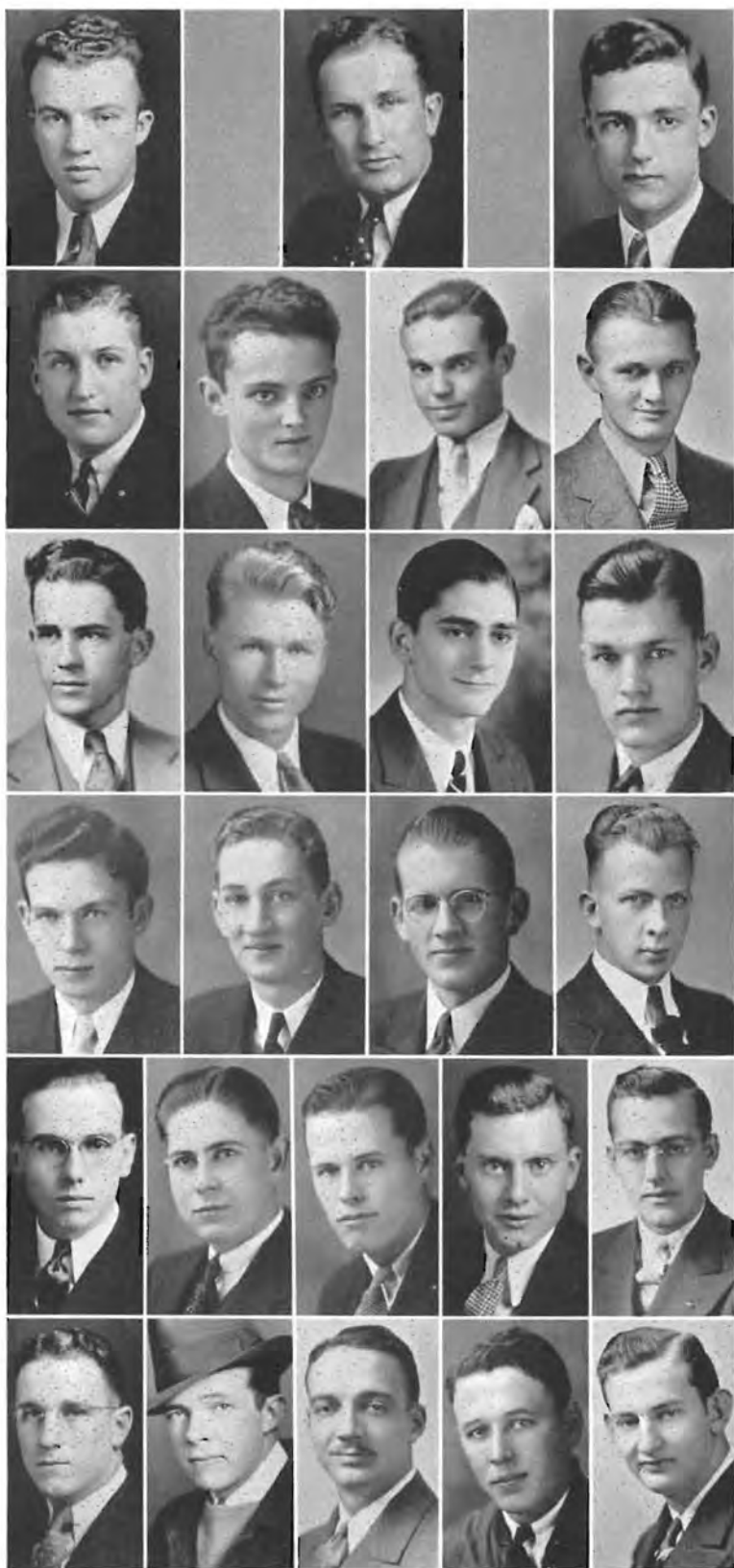
D. Whitwam

H. Whitwam

M. Zimmerman

Wilson





ATHENS

Kenneth Franks
V. Baltzell
Henderson

Buss
Claude Copley
Clarence Copley
Collier

Curry
Deal
Duffy
Erwin

Keith Franks
Goforth
Graham
Hadley

Hagan
Harlan
Hamilton
Holman
Kunkel

Johnston
Lowther
Maher
Maxwell
Mickleson

ATHENS

Swoyer

Brooner

Lehman



Morgan

Mossman

Phillips

Page



Porter

Priest

Reese

Rhoades



Robinson

Rutter

Savage

Sponenberg



Story

Van Valkenberg

Voight

Warner



Watkins

Williams

Wilson

Wright

Yergler



Aurora-Laconia Honor



Hazel Flook



Ward Henderson



Myrtle Adams



Leon Snyder

Vera Mae Elliott

Lillian Hodges

Robert Burden

Richard Farmer



AURORA

Bunch
Ada

Bowling
Crym

Dickerson
Colb

Deever
Gay

Hollibaugh
Dent

Edsall
Hod

M. King
Faw

H. Flook
Ma

Reece

Page 69

AURORA-LACONIA

Bunch
 Adams
 Burden
 Baty
 Calvert

Bowling
 Caywood
 Buhler
 Davidson
 Clift

Dickerson
 Colborn
 Elrod
 Cooper
 Farmer

Deever
 Guy
 Dennis
 Halbert
 Dungey

Hollibaugh
 Dunlevy
 Henderson
 Earhart
 Hilfinger

Edsall
 Hodges
 M. E. Elliott
 Jones
 V. M. Elliot

M. King
 Fawcett
 R. King
 G. Flook
 Brook

H. Flook
 Manny
 Hodges
 Moore
 Hot

Reece
 Hawkins
 Robinson
 Guy





AURORA-LACONIA

Husted
Rose
Fisher
Hutto
Snyder

Jacques
Jones
Stutzman
King
Lawson

Taylor
McClaren
Nelson
Thurston
H. Milligan

N. Milligan
Wade
Paasch
Pike
Watkins

Rice
Richardson
Webber
Rohl
Shaw

Wimberly
Slade
Sponenberg
Wilson
Vollweider

Ward
Wright
Watson
Wilson
Vinette

Wimberly
Woodard
Zimmerman
Woodward
Woolard

Liberal Arts



Don Cooper

Instructor in Physical Education and Assistant Coach; Director of Intramural Athletics

A. B., Southwestern College, 1934. Southwestern College, 1933.

Emily Ericsson

Assistant Professor of French and Spanish

A. B., University of Kansas, 1925; A. M., University of Kansas, 1926; Certificat d'Aptitude a l'Enseignement Superieure, Alliance Francaise. One year, Sorbonne, University of Paris. Member American College Quill Club; Pi Beta Phi; Kansas Authors' Club. Southwestern College, 1934.



Robert B. Dunlevy

Associate Professor of Geology

B. L., University of Wisconsin, 1893; A. M., University of Wisconsin, 1910; Consulting Geologist for Oil Corporations in the United States 1921-1923; in Italy, 1924. Southwestern College, 1895.

Helen F. Evers

Instructor in Home Economics

A. B., Southwestern, 1929; M. S., Kansas State College, 1932. Pi Gamma Mu; Kappa Omicron Phi; Gamma Omicron; Order of the Mound. Phi Kappa Phi, Omicron Nu, A. A. U. W., P. E. O. Sisterhood. Southwestern College, 1933.



Faculty

Ada M. Herr

Associate Professor of Sociology

A. B., Southwestern College, 1907; A. M., University of Michigan, 1909. Southwestern College, 1918.



Mrs. Lulu M. Giger

Instructor in Typewriting and Stenography

Kansas Wesleyan Business College, Salina; Gregg School, Chicago; Gregg Shorthand Teachers' Certificate. Teacher in Central Commercial College, private school, night school for adults. Southwestern College 1934.

David L. MacFarlane

Professor of History and Political Science; President, Inter-Society Council

A. B., Northwestern University, 1916; S. T. B., Garrett Biblical Institute, 1917; University of Edinburgh, 1928-1929; Ph. D., University of Edinburgh, 1931. Southwestern College, 1922. Fellow American Geographic Society; A. A. U. P.; Kansas Educators' Club; Pi Gamma Mu.



Eleanore Hayes

Assistant Professor of English

A. B., Southwestern College, 1894; A. M., University of Kansas, 1917. Southwestern College, 1907.

Liberal Arts



Myrta E. McGinnis

Assistant Professor of English and Journalism

A. B., University of Missouri, 1917; A. M., University of Missouri; Ph. D., Yale University, 1932. Phi Beta Kappa; Pi Lambda Theta; University Scholar in English, Yale University. A. A. U. P., M. L. A.; A. A. U. W. 1918-1920, Instructor, University of Missouri; 1920-1922, Instructor, University of Wisconsin; 1924-1930, Instructor in English, Goucher College, Baltimore, Md. Southwestern College, 1934.

William W. Monypeny
Director and Coach of Athletics

B. S., Kansas State Teachers, Emporia. All-Kansas Guard, 1915; All-Kansas Tackle in 1916, and Captain of All-Kansas team in 1916. 1918, served in U. S. Army, Air Service; 1919-1921, Coach and Teacher, Mangum, Oklahoma; 1921-1925, High School Principal and Coach, Marion, Kansas. Southwestern College, 1925.



T. Reese Marsh
Professor of English

A. B., Johns Hopkins University, 1924; Ph. D., University of Iowa, 1933. Pi Delta Epsilon; Sigma Upsilon; Johns Hopkins Activity Key; American Association of University Professors; Modern Language Association of America. 1925-1929, Instructor, Johns Hopkins University; 1927-1929, Professor of English, Peabody Conservatory of Music; 1932-1933, Study, School of Letters, University of Iowa. Southwestern College, 1929.



Downing P. O'Harra
Librarian

A. B., Southwestern College, 1925; A. M., University of Illinois, 1928; Pi Gamma Mu. Southwestern College, 1928.



Faculty

Webster P. Reese

Professor of Education; Dean of Men

Graduate, Kansas State Teachers' College of Emporia, 1912; B. S., University of Missouri, 1917; M. S., University of Kansas, 1919; Graduate Study, Columbia University; University of California, 1929-1931. Pi Gamma Mu; Phi Delta Kappa. 1917-1923, Superintendent of City Schools of Kansas. Southwestern College, 1923.



Lawrence Oncley
Professor of Chemistry

A. B., De Pauw University, 1907; M. S., University of Chicago, 1913. American Men of Science. 1907-1909, Professor of Chemistry, Wheaton College; 1909-1912, Upper Iowa University. Graduate student of Kansas University, 1924-1925. Southwestern College, 1918.

Frank W. Tuttle
Professor of Economics

A. B., University of Kentucky, 1920; A. M., University of Illinois, 1924; Ph. D., State University of Iowa, 1934. Pi Gamma Mu, Order of Artus. 1920-1921, Instructor, Blair Academy, Blairstown, N. J.; 1922-1926, Assistant in Economics, University of Illinois; 1926-1929, Instructor in Economics, University of Illinois; 1929-1933, Asst. Professor of Economics, Washington and Jefferson College; 1933-1934, Graduate Study, State University of Iowa. Southwestern College, 1934.



William J. Poundstone

Registrar; Associate Professor of Education; Alumni Secretary

A. B., Southwestern College, 1910; A. M., University of Kansas, 1925. Pi Gamma Mu; Order of the Mound; Phi Delta Kappa. 1910-1926, Principal and Superintendent of Kansas Schools. Southwestern College, 1926.

Liberal Arts Faculty



C. I. Vinsonhaler

Assistant Professor of Latin and English

A. B., Highland College, 1911; A. M., University of Kansas, 1927.
Southwestern College, 1927.

Chalcea White

Dean of Women; Assistant Professor of Home Economics

A. B., Southwestern College, 1921; A. M., Columbia University, 1929. Pi Gamma Mu; Kappa Omicron Phi; Gamma Omicron; P. E. O.; A. A. U. W.; National Treasurer of Kappa Omicron Phi; Regional Council, Y. M. and Y. W. C. A. Southwestern College, 1929.



Emory W. McNeil

Field Secretary

A. B., Southwestern College, 1922. Methodist Minister, Southwest Kansas Conference.

William T. Ward

Acting Business Manager

A. B., Southwestern, 1904; D. D., Southwestern College, 1922. 1904-1916, Pastor; 1916-1920, District Superintendent of Winfield District; 1920-1922, Organization Director, Wichita Area; 1922-1925, District Superintendent of Winfield District. Southwestern College, 1925.



Fine Arts Faculty

H. Hugh Altvater

Dean of the School of Fine Arts; Professor of Violin; Director of Orchestra and String Choir

A. B., University of Michigan, 1920; Mus. M., Southwestern College, 1925; Mus. M., University School of Music, Ann Arbor, Michigan, 1929; Pupil of G. Remy, Paris Conservatory. Phi Beta Kappa. Southwestern College, 1920.



Frances Ambrose
Instructor in Piano

Mus. B., Southwestern College, 1931; Student of Isadore Phillippe and Marcelle Herrenschildt, Fontainebleau, France, 1928; at Conservatoire Americaine. A. B., Southwestern. Piano Study with Henry Loudenback and John Williams, N. Y. Southwestern College, 1929.

Hobart L. Barbour
Instructor in Violoncello

Cornell College and Southwestern College. Southwestern College, 1926.





Fine Arts

Charles O. Brown

Professor of Instrumental Music; Conductor of Band

Mus. B., Southwestern College, 1924; Army Bandmaster, New York City. Southwestern College, 1922.

Edith Dielmann

Instructor in Expression and Dramatics

Graduate in Expression, Southwestern College; Northwestern University; Pupil of Mme. Howatt, Chicago Musical College, O. B., 1930. Student of Albert Johnston, 1928; Leland Powers School, Boston. Pupil of A. A. Godfray, London, 1934. Southwestern College, 1926.



E. Marie Burdette

Instructor in Piano

Mus. B., Winfield College of Music, 1922; A. B., Southwestern College, 1931; Normal Training with Mrs. Crosby Adams, 1922, 1924-25, 1928, 1931; Piano with Isadore Phillippe, Madame Dasset, F. Motte-Lacrois, and Organ with Marcel Dupre, Paris, 1927, 1930. Southwestern College, 1925.

Fern Dielmann

Instructor in Piano

Mus. B., Winfield College of Music, 1926; Pupil of Percy Grainger at Chicago Musical College, 1927-28; Pupil of Archibald Olmstead, Louis Victor Saar, and Barton Bachmann; Piano with Dr. Paul Weingarten and Music Interpretation with Dr. Max Graf, Vienna, Austria, 1930. Southwestern College, 1926.



Faculty

Henry H. Loudonback
Professor of Piano

Graduate in Piano and Theory, Campbell University, 1902; Pupil of Mr. and Mrs. A. K. Virgil, New York; Allen Spencer of American Conservatory at Chicago; Madame Annie Bloomfield-Zeisler, Chicago; P. G. Lutkin and Arne Oldber, Northwestern University. 1902-06, Director of Music, Atchison County High School; 1906-10, Director at South Dakota State; 1911-12, Director of Piano, Dakota Wesleyan University; 1913-18, Director Loudonback School of Music, Atchison, Kansas; 1918-26, Director Christian College Conservatory of Music, Columbia, Missouri. Southwestern College, 1926.



Helen Graham
Assistant Professor of Expression and Dramatics

A. B., Southwestern College, 1919; Alberti School of Expression with Madame Alberti, 1921-22; Columbia University, 1927; Northwestern University, 1929-30. Southwestern College, 1922.

Cora Conn-Moorhead
Professor of Organ and Theory of Music

Graduate, Findlay College Conservatory, 1900; Graduate of Guilford Organ School, 1911; Pupil of Marcel Dupre in Musical Analysis and Organ, Mme. Nadia Boulanger in Harmony, Paris, 1927. Southwestern College, 1924.



Ida Clawson Hunt
Professor of Public School Music

Mus. B., Baker University, 1921; Beethoven Conservatory, St. Louis; University of Oklahoma and Oklahoma City University, 1929; Northwestern University, 1930; Voice Pupil of Marvin D. Geere, Eduardo Sacredote, Edgar Cook, Oscar Seagle, and William Schmidt; Dunning System of Piano with Carrie Munger Long. Southwestern College, 1929.



Fine Arts Faculty

Allan F. Schirmer
Professor of Voice

A. B., Dennison University; Mus. B., Northwestern University.



Grace Sellers
Instructor in Piano

Mus. B., Southwestern College, 1927; Pupil of Oscar Torsen, H. H. Loudenback and Maurice Dumesnil.



Merle Steinberg
Instructor in Piano

Graduate of Winfield School of Music, 1924; Pupil of Charlotte Rose and Archibald Olmstead; Mus. B., Southwestern College, 1929; A. B., Southwestern College, 1932; Pupil of Mr. and Mrs. Crosby Adams, Summer, 1928-29.

Administration Assistants



C. O. Detter, Chas. Kitzelman, J. L. Price, custodians; Gladys Gosch, assistant librarian; Lois Hill, registrar's secretary; Thelma Humburg, bookkeeper; Ruth Marvel, secretary to dean of fine arts; Mrs. Elma Reese, teacher placement; Frances Thomas, secretary to field secretary; Esther Brown, Mrs. Mabel Casburn, Mrs. Edna Cobb, Mrs. Linnie Hildinger, Mrs. Zoe Osen, matrons.

Class of '55

Albert William Blood, Jr.
November 16, 1934
Mr. and Mrs. A. W. Blood



Paul Wayne Henderson
September 29, 1934
Mr. and Mrs. Ward Henderson



Sarah Elizabeth Marsh
August 14, 1934
Dr. and Mrs. T. Reese Marsh



John Grover Albright
June 29, 1934
Mr. and Mrs. Penrose S. Albright

Phyllis Ann Bird
June 25, 1934
Dr. and Mrs. Marion T. Bird



Class Officers

SENIORS

Mark Swoyer, President
 Leon Snyder, Vice-President
 Hazel Deevey, Secretary-Treasurer

Gerald Warren, President
 Howard Elrod, Vice-President
 Don Hattan, Secretary-Treasurer

JUNIORS

Raymond Page, President
 Earl Bryan, Vice-President
 Harriet Kelley, Secretary-Treasurer

Wilbur Clark, President
 Carl Stocking, Vice-President
 Jean Hovgard, Secretary-Treasurer

SOPHOMORES

Robert Burden, President
 Robert Thompson, Secretary-Treasurer
 Flora Alice Blair, Secretary-Treasurer, Vice-President

Leonard Schiefelbine, President
 Helen Morris, Vice-President

FRESHMEN

Floyd Priest, President
 Lloyd Harp, Vice-President
 Paul Stitt, Secretary-Treasurer

NIGHT . . . foggy, dim, haunting. A dripping, silvery dome glistens under a warm March shower. Against the dark of slowly boiling clouds it rears its bald crown. At its feet in darker shadows sway the cedar tops, in harmony with soft new breezes. The reflection of many lighted windows comes skidding down to meet me, to greet me, and I . . . climb beloved 77 to my Coronation.

—Lowell Miller

SENIORS

Myrtle Adams

Oxford; Home Economics; Aurora, President; Gamma Omicron, President; W. A. A., President; Builderettes, President; Y. W. C. A., Cabinet; Cosmopolitan Club.



Victor Baltzell

Hebron, Neb.; Pre-Medic; Athens, Attorney; Pi Sigma Phi; Football; Track; Campus Players Play.

William Baltzell

Hebron, Neb.; Education; Football; Athens; Intramurals.



James Brakebill

Englewood; Instrumental Music; Orchestra; String Choir.

Keith Corp

Fairbury, Neb.; Biology; Football.



Frances Creger

Medicine Lodge; Pre-Medic; Sigma Pi Phi; Order of the Mound.

Hazel Deever

Sedgwick; English; Aurora; A Cappella Choir; Y. W. C. A., President; English Club, Program Chairman; Gospel Team; Mexican Night School; Social Science Society; Order of the Mound.



Mary Louise Dungey

Winfield; Home Economics; Aurora; Gamma Omicron, President.

Emma Louise Earhart

Winfield; English; Aurora; English Club.



Elda Edsall

Bluff City; English, Dramatics; Aurora; Leneans; Pi Kappa Delta; Y. W. C. A.; English Club.

Howard Farrar

Norwich; Public School Music; Delphi; A Cappella Choir; Student Director; Y. M. C. A., President.



Tom Emmitt

Winfield; Instrumental and Public School Music; A Cappella Choir; Band; String Choir; Male Quartette; Orchestra, Faculty String Quartette; Elijah; Festival Chorus; Order of the Mound.

SENIORS

Mildred Fisher

Cedar Vale; Public School Music; Aurora; A Cappella Choir; Girls' Trio; College Octet; Orchestra; English Club.



Hazel Flaherty

Cheney; History; Belles Lettres, President; K. K. Pep Club, President; W. A. A., President; Student Council; Personnel Counselor; Builderettes; Campus Leader, '34.

Wofford Gardner

Wellington; History, Public Speaking; Delphi, President; Pi Kappa Delta; Pi Gamma Mu; Debate; Oratory; Student Council; Personnel Counselor; Intramurals; Epworth League, President; Social Science Society; Order of the Mound.



Ruth Geesling

Turon; History; Belles Lettres, Secretary; Jinx Janes; Student Council; Moundbuilder Staff; Collegian Staff.

George Guy

Winfield; Education; Laconia; Romance Language Club, President.



Don Hattan

Mt. Hope; Business Administration; Delphi; Rooters Club, President; Band, President.

Inez Hensley

Dodge City; Latin; Sigma Pi Phi, President; Rush Captain; K. K. Pep Club, President; Pi Gamma Mu; Social Science Society.



Bessie Lu Henthorne

Winfield; French; Belles Lettres; Romance Language Club; W. A. A.; Builderettes.

Grace Hinshaw

Winfield; Education; W. A. A.; Builderettes; Y. W. C. A.; Gospel Team.



Lillian Hodges

Winfield; English; History; Aurora, Treasurer; Y. W. C. A., Cabinet; W. A. A.; Builderettes; Collegian Staff; Social Science Society.

Berniece Holecek

Burns; Education; Sigma Pi Phi, Secretary; Pi Gamma Mu; Social Science Society; Y. W. C. A.; Romance Language Club.



Edward Hotton

Syracuse; Public School Music; Delphi, Critic; A Cappella Choir; Student Director; College Quartette; Octet; Y. M. C. A.; Moundbuilder Staff.

SENIORS

Luther Hoyle

Winfield; Biology; Chemistry; Pi Sigma Phi; Football; Track; President Biology Seminar.



Raymond Hoyt

Attica; Business, Economics; Delphi; Track; Football; Y. M. C. A.; Intramurals.

Ada Lee Hutto

Winfield; History; Aurora; English Club; Social Science Society; Orchestra; Y. W. C. A.; W. A. A.; Builderettes.



Alberta Johnson

Blackwell, Okla.; Music; Sigma Pi Phi; A Cappella Choir.

William Jones

Topeka; Geology; Laconia; Pi Sigma Phi; Baseball; Intramurals; Y. M. C. A.



John Kelley

New Brunswick, N. J.; History.

Roberta Kraft

Macksville; Music.



Thelma Ruth Kunder

Winfield; Public School Music; Belles Lettres, President; A Cappella Choir; Girls' Quartette; Social Science Society.

George Lancaster

Winfield; Speech; Laconia; Campus Players, President.



Alice Leighty

Valley Center; History; Sigma Pi Phi, Treasurer, Critic; Gamma Omicron; Jinx Janes; A Cappella Choir; Inter-Society Council; Social Science Society; Sophomore Class, President.

Betty Lowther

Winfield; English; Belles Lettres, President; Pi Gamma Mu; English Club, Vice-President; Student Council, Secretary; Y. W. C. A., Secretary; Jinx Janes, Secretary-Treasurer; Inter-Society Council; Personnel Counselor; Social Science Society; May Queen; Campus Leader.



Ellis Manka

Winfield; History; Delphi; A Cappella Choir; Glee Club; English Club; Y. M. C. A.

SENIORS

John Moore

Winfield; Physics; Laconia; Debate; Intramurals; Order of the Mound.

Virgil Moreland

Mt. Hope; Business Administration, Education; Delphi, President; Pi Gamma Mu; Pi Sigma Phi; Inter-Society Council; Student Council, President; President of the Student Body; Personnel Counselor; Football; Track; Intramurals; Campus Leader; Y. M. C. A. Award.

Marcile Nelson

Greensburg; Home Economics; Aurora; Gamma Omicron, Secretary-Treasurer; Y. W. C. A.; W. A. A.; Builderettes.

Vivian Pike

Ashland; English, Dramatics; Sigma Pi Phi; Pi Kappa Delta, President; Pi Gamma Mu, President; Leneans; Campus Players; Student Council; English Club; Editor "Fledgling"; Editor "The Southwestern Collegian"; Moundbuilder Staff; Campus Leader; Order of the Mound; K. K. Pep Club, President.

Elmer Rinkel

Haviland; Sociology; Pi Gamma Mu; Delphi; Oxford Fellowship, Program Chairman, Vice-President; Cosmopolitan Club; Y. M. C. A., Cabinet; Social Science Society; English Club; Collegian Staff.

Jose Rosales

Newton; Business Administration, Political Science; Pi Kappa Delta, Vice-President; Cosmopolitan Club, President; Romance Language Club, Vice-President; Debate.



Mary Darlene Moore

Winfield; Sociology; Belles Lettres, Rush Captain, President; Pi Gamma Mu; K. K. Pep Club, Vice-President, President; Debate; Inter-Society Council, Secretary; Social Science Society; Collegian Staff; Moundbuilder Staff.

Johnie B. Morgan

Winfield; History; A Cappella Choir; Orchestra; Track.

Martin Ossowski

Fairbury, Neb.; Education; Pi Sigma Phi; Football, Co-Captain; Baseball; Track; Y. M. C. A.

Victor Reiserer

Leon; History; Athens; Intramurals.

Cornelius R. Rogers

Lake City; Biology; Delphi; English Club; Biology Seminar, Vice-President.

Alfred Simpson

Independence; History and Physical Education; Delphi; Pi Sigma Phi; Football; Y. M. C. A.; Intramurals.

SENIORS

Clay J. Smith

Cambridge; Economics; Delphi; Pi Sigma Phi; Pi Kappa Delta; Debate; Oratory; Extempore; Baseball.

LaVerna Fern Sponenberg

Winfield; Home Economics; Chemistry; Aurora; Gamma Omicron; Y. W. C. A.; Cabinet; W. A. A.; Builderettes.

Edwin Stocking

Winfield; Social Science; Delphi; Y. M. C. A.; Finance Chairman, Treasurer, President; College League, Treasurer, President; Leneans; A Cappella Choir; Personnel Counselor.

Evan Thomas

Lamar, Colo.; Mathematics; Athens; Pi Sigma Phi; Football, Co-Captain; Senior Class President; Intramurals; Collegian Staff.

Wayne Wade

Winfield; Chemistry, Mathematics; Laconia.

Gerald Warren

Winfield; Business Administration; Delphi, President; Pi Kappa Delta; Pi Gamma Mu; Debate; Extempore; Campus Players, Business Manager; Student Council; Inter-Society Council; Social Science Society, President; Senior Class President.



Leon Snyder

Winfield; Chemistry; Laconia, President; Junior Class President; Student Council; Inter-Society Council; Physical Science Seminar.

Mildred Stateler

Minneola; Sigma Pi Phi, President; English Club, President; Pi Gamma Mu; K. K. Pep Club; Inter-Society Council; Student Council; A Cappella Choir; Girls' Quartette; Y. W. C. A., Program; Gospel Team; Homecoming Queen; Social Science Society; Campus Leader.

Mark Swoyer

Wilmot; English; Athens, Speaker; Student Council, Vice-President; Senior Class, President; Campus Players Leneans; Collegian Staff, Business Manager.

Darrel Vinnette

Howard; English, Biology; Laconia; A Cappella Choir.

Newton Ward

Moscow; Chemistry, Physics, Mathematics; Physical Science Seminar; Order of the Mound.

Mary L. Watkins

Belle Plaine; Social Science, Education; Order of the Mound.

SENIORS



Austin McGhee

Tyro; Bible; Oxford Fellowship; Gospel Team.

Eva May Giger

Winfield; Religion; Social Science Club.

Max Hill Weir

Newton; Social Science; Delphi; Moundbuilder Editor; Y. M. C. A.; Cosmopolitan Club; Oxford Fellowship; Campus Leader; Junior Class President; Jinx Jellies.

Edythe Wendt

Buhler; Home Economics; W. A. A.; Builderettes; Gamma Omicron; Y. W. C. A.

Ross Williams

Wichita; Violin; Instructor in Violin.

Wilma Wills

Plains; English and Education; Sigma Pi Phi; Gamma Omicron; Y. W. C. A. Cabinet; English Club.

Wayne Wilmot

Newkirk, Okla.; English; Athens; Intramurals.

JUNIORS

Erma Amick

Marion; English; Sigma Pi Phi.

Willetta Chubb

Baxter Springs; English and Sociology; Sigma Pi Phi; Pi Gamma Mu; Leneans; English Club; Y. W. C. A. Cabinet.

Royal Curry

Newkirk, Okla.; Social Science; Athens; Leneans; Oxford Fellowship; President; Y. M. C. A.

Mrs. Leona Gibbon

Winfield; English.

Charles Martin

Sevierville, Tenn.; English; Campus Players; Delphi.

Cardeza McLaurin

Langston, Okla.; Education; Cosmopolitan Club; Y. W. C. A.

Lois Niles

Copeland; History; Y. W. C. A.

E. Lois Shook

Nickerson; History; Sigma Pi Phi.



JUNIORS

Ruth Allen

Winfield; English; Belles Lettres;
English Club; Jinx Janes; Pi Gamma
Mu.

Darrel Berry

Cullison; Physical Education; Y. M.
C. A.; Asst. Business Manager Col-
legian; Intramurals.

Wendell Broadie

Kinsley; Geology; Delphi; Foot-
ball; Intramurals.

George Brooner

Winfield; Geology; Athens; Intra-
murals.

Earl Bryan

Cullison; Biology; Pi Sigma Phi;
Basket Ball.

Irene Buhler

Pretty Prairie; Business; Pi Kappa
Delta; Pi Gamma Mu; Aurora; English
Club; Jinx Janes; Forensics.

James Calvert

Winfield; Business; Laconia.

Gerald Caywood

Wichita; Education; Laconia; Foot-
ball; Basket Ball.



Anita Armour

Bentley; Home Economics; Sigma
Pi Phi; Gamma Omicron; Kappa Omi-
cron Phi; Cosmopolitan Club; Y. W.
C. A.; W. A. A.

Earl Boldt

Belmont; History and Education;
Y. M. C. A.; Social Science Club;
Intramurals.

Kenneth Brooks

Burden; Pre-Medic; Delphi; Intra-
murals.

Kenneth Brown

Ft. Dodge; History; Delphi; Pi
Sigma Pi; Football.

Pearl Buckman

Winfield; English and History;
Belles Lettres.

Neils Bunch

Winfield; Business Administration;
Laconia.

Ralph Calvert

Howard; Chemistry and Mathe-
matics.

Wilbur Clark

Winfield; Chemistry; Delphi; Cam-
pus Leader; Business Manager; Mound-
builder; Junior Class President; Intra-
murals; President; Jinx Jellies.

JUNIORS

Constance Clokey

St. Cloud, Fla.; Organ; Organ Club.

Ma'celine Cochrum

Winfield; Biology; Belles Lettres; English Club; Jinx Janes.

Louise Craig

Arkansas City; History.

Delores Davis

McPherson; Music; Pittsburgh 1, 2, 3.

Jean Dobson

Winfield; Belles Lettres; Jinx Janes.

Wilbur Dunkelberger

Belmont; History and Education; Y. M. C. A.; Social Science Society.

Mary Estelle Elliott

Wilmot; Home Economics.

Howard Elrod

Burden; History, English; Laconia; Editor and Business Manager of The Collegian; Intramurals; Secretary Junior Class; Secretary of War, Laconia; Inter-Society Council; Vice-President of Senior Class.



Bruce Clover

Pittsburg; Education.

Clarence Copley

Hazelton; Education; Athens; Y. M. C. A.

Robert Davidson

Wichita; Instrumental Music; Laconia; Business Manager of A Cappella Choir; Epworth League; Cabinet.

Wayne Davis

Lamar, Colo; History; Delphi; A Cappella Choir; Quartet.

Helen Duckworth

Spivey; Home Economics; Gamma Omicron; Social Science Society.

Dorothy Elliott

Winfield; Home Economics; Kappa Phi; Belles Lettres; Gamma Omicron; Y. W. C. A.; Jinx Janes.

Vera Mae Elliott

Plains; Home Economics; Aurora; Moundbuilder Staff; Y. W. C. A. Cabinet; Inter-Society Council; A Cappella Choir; Jinx Janes; Epworth League Cabinet;

Hazel Flook

Canton; Home Economics; Aurora; Kappa Phi; Gamma Omicron; Pi Gamma Mu; K. K. Pep Club; Y. W. C. A.; W. A. A.; Kappa Omicron Phi; President, Aurora; Epworth League Cabinet.

JUNIORS

Kenneth Franks

Winfield; Business Administration and Economics; Athens, President; Pi Gamma Mu; Social Science Society; Leneans; Y. M. C. A. Cabinet; Inter-Society Council.

Irma Ruth Giger

Elmdale; Education; Belles Lettres; Social Science Society; English Club.

Dorothy Hatfield

Kinsley; Sigma Pi Phi; Band.

Lawrence Hayward

Burdette; Business Administration.

Jay Holman

Winfield; Biology; Athens, Band; Orchestra.

LeNora Johnson

Galva; History; Sigma Pi Phi; W. A. A.

Kenneth Kaufman

Kingman; Education; Delphi; Social Science Society; Football; Track; Intramurals.

Harriet Kelley

Winfield; Home Economics; Kappa Omicron Phi; Gamma Omicron; Leneans; Y. W. C. A.; Belles Lettres.



Helen Freeman

Dodge City; Music and Sociology; Pi Gamma Mu; Cosmopolitan Club; Orchestra; A Cappella Choir; String Choir; Jinx Janes.

Maxine Gresham

Bucklin; English; Pi Gamma Mu; Sigma Pi Phi; Leneans; Student Council; K. K. Pep Club; Y. W. C. A. Cabinet; Social Science Society.

Lewie Hayse

Greensburg; Business Administration; Delphi; Track; A Cappella Choir.

Willfred Hodges

Greensburg; Instrumental Music; Delphi; Band; Orchestra; Intramurals.

Jean Hovgard

Topeka; Business; Sigma Pi Phi; Class Secretary; Jinx Janes; A Cappella Choir.

Jean Johnston

Norwich; Business; Athens, Critic; Program Chairman; Sophomore Vice-President; Social Science Society.

Darleen Johnston

Norwich; History; Belles Lettres; Social Science Society; Debate; Y. W. C. A.

Lucille King

Hutchinson; History; Belles Lettres; Jinx Janes.

JUNIORS

Eugene Kunkel

Kansas City; Education; Athens; Moundbuilder Staff; Social Science Society; Band; Debate.

Anna Levick

Winfield; History; Sigma Pi Phi; English Club; Social Science Society; Orchestra; Violin Choir.

Virginia McKnight

Oxford; Social Science; Belles Lettres; Treasurer; Pi Gamma Mu; Y. W. C. A.; Cabinet; W. A. A.; Builders; President; Sophomore, Secretary and Treasurer; Jinx Janes.

Pat Maher

Winfield; Geology; Athens; Intramurals.

Don Milliken

Augusta; Biology.

Homer Mossman

Winfield; Business Administration; Athens; Pi Sigma Phi; Track; Y. M. C. A.; Cabinet; Student Council; Freshman President.

Rebecca Ortiz

Winfield; French; Romance Language Club; President Cosmopolitan Club.

Malva Paasch

Burden; Aurora; Y. W. C. A.; Pi Kappa Delta; Debate; Social Science Society.



Lucy Landon

Nanticoke, Md.; French and English; Sigma Pi Phi; Cosmopolitan Club; English Club; Romance Language Club; Personnel Counselor.

Betty Lu Lynn

Winfield; Mathematics and Social Science; Belles Lettres; Pi Gamma Mu; Jinx Janes.

Martha McManus

Winfield; History and English; Belles Lettres; Jinx Janes.

Raul Menendez

Holquin, Cuba; Biology; Cosmopolitan Club; Romance Language Club.

Dale Morris

Mt. Hope; History; Delphi, Secretary; President Holland Hall.

Anna Beth Odenweller

Winfield; English; Belles Lettres; Jinx Janes; Orchestra; A. Cappella.

Burnita Ormes

Caldwell; Piano; Sigma Pi Phi.

Raymond Page

Leon; Business Administration; Athens; Student Council; President Leneans; Inter-Society Council; Intramurals.

JUNIORS

Ellinor Parker

Hugoton; Business Administration; Sigma Pi Phi; Y. W. C. A. Cabinet; W. A. A.; Festival Chorus; A Cappella Choir.

Iden Reese

Winfield; Education, Social Science, History; Athens, Rush and Initiation Captain, Chaplain; A Cappella Choir; Elijah; Festival Chorus; Quartette; Octette; Sextette; Inter-Society Council; Personnel Counselor; Y. M. C. A.; Pi Gamma Mu; President Grace Choir and Epworth League.

Harriet Scott

Winfield; English; Gamma Omicron; W. A. A.; Builderettes.

Mary Ellen Shaw

Roswell, New Mex; Sociology; Aurora; English Club; Cosmopolitan Club; Y. W. C. A. Cabinet; Jinx Janes.

Bernice Smith

Garden City; History; Sigma Pi Phi; English Club; Social Science Society; Y. W. C. A.

Lewis Stoelzing

Wellington; Music; Moundbuilder Staff; Orchestra.

Lois Viele

Caldwell; Public School Music; Sigma Pi Phi; A Cappella Choir; Girls' Quartet.

Kenneth Watkins

Winfield; Business Administration; Laconia, Vice-President; Student Council; Campus Players; Vice-President Junior Class; Yell Leader.



Velma Poe

Winfield; History; Y. W. C. A.

Rita Richardson

Wilmore; Mathematics; Aurora; Y. W. C. A.; W. A. A.; Builderettes.

Lucille Shaver

Winfield; English; Belles Lettres; Jinx Janes.

Savinah Shockey

Winfield; Sigma Pi Phi.

Carl Stocking

Danville; Religious Education; Oxford Fellowship; Gospel Teams; Y. M. C. A.; Debate.

Carl Stutzman

Winfield; Band.

Maxine Viele

Caldwell; Home Economics; Sigma Pi Phi, Treasurer; Kappa Omicron Phi; Gamma Omicron, President; A Cappella Choir; Orchestra.

James Watts

Douglas; Education; A Cappella Choir; Y. M. C. A.

JUNIORS

Donna White

Cimarron; Public School Music; A Cappella Choir; Jinx Janes; Gospel Teams; Sigma Pi Phi.



Graydon Wilson

Ponca City Okla.; Social Science; Athens; Oxford Fellowship; Gospel Teams; Y. M. C. A.



Rufus Wright

Adair Okla.; Mathematics and Physics; Laconia; Pi Sigma Phi; Football; Intramurals.



Louise Youle

Winfield; Public School Music; Sigma Pi Phi; Orchestra; String Choir; English Club; Y. W. C. A.



Carl Zerger

Belmont; History and Education; Social Science Society; Y. M. C. A.; Intramurals.



Ruth Mary Zimmerman

Wichita; History; Gospel Teams; Social Science Society; Jinx Janes; Y. W. C. A.; Belles Lettres.



Carl Ayers

Pratt; Business Administration; Y. M. C. A.; Football; Intramurals.



Joe Urban

Cullison; Education; Delphi; Football; Basket Ball; Tennis; Boxing; Pi Sig.



Everett Williams

Winfield; History; Athens; Intramurals; Dramatics.

Martha Woodard

Valley Center; History and Public Speaking; Y. W. C. A.; Debate; Dramatics; W. A. A.

John Yergler

Clearwater; History and Physical Education; Athens; Track; Football; Basket Ball; Boxing; Wrestling; Y. M. C. A.

Freeman Yount

Ponca City, Okla.; Music; Band; Orchestra; Piano Culture; Delphi.

Waldo Zerger

Belmont; History and Education; Y. M. C. A.; Intramurals.

Virginia Zimmerman

Wichita; Sociology; Sigma Pi Phi; Oxford Fellowship; Social Science Society.

Leonard Noel

Blackwell; Physical Education; Pi Sig.

Wayne E. Karlowski

Udall; Religion.

SOPHOMORES

Glenn Ainsworth, Argonia

Phil J. Antrim, Spivey

Doris Aulman, Macksville

Mildred Crane Ayers, Oklahoma City

Pauline Ballinger, Leon

Robert Baltzell, Hebron, Neb.

Earlene Basore, Valley Center

Elsie Baty, Plains

Allene Bennett, Winfield

Flora-Alice Blair, Caldwell

Doris Bloomfield, Winfield

Wayne Brooks, Winfield

Bob Brown, Winfield

Claron Brown, Junction City

Robert Burden, Burden

Carrie Calvin, Winfield

Burt Cleghorn, Copeland

Jean Colborn, Washington, D. C.

Blanche Cottom, Winfield

Leonard Cowan, Beaver, Okla.

Charles Curtiss, Beeler

Jack Cuthbertson, Winfield

Gaile Davis, Kincaid

LaVerne Deal, Sawyer

Maxine Doty, Caldwell

Merwin Deever, Sedgwick

Avery Dickerson, Neponset, Ill.

Victor Edgell, Syracuse

Ruth Edwards, Meade

Harriett Elliott, Plains





SOPHOMORES

Elizabeth Eslinger, Kinsley

Kenneth Fabian, Atlanta

Richard Farmer, Pratt

Albert Felt, Wellington

Georgia Flook, Canton

Velda Floyd, Argonia

Clifford Foulk, Turon

Virginia Dare Friend, Pawhuska, Okla.

Veryl Froemming, Winfield

Maxine Gilmore, Bartlesville, Okla.

Carl Everett Gordon, Winfield

Raymond Hagan, Winfield

Richard Halbert, Coats

Marion Annabelle Hart, Winfield

Edith Hawkins, Winfield

Clare Hayes, Howard

Wilma Heitmeyer, Oxford

Raymond Henderson, Harper

Ray Henry, Kiowa

Wesley Hodges, Liberal

Richard Holland, Pratt

William Hollibaugh, Winfield

Dwight Holt, Oxford

Emma Hoyle, Winfield

Wendell Hughes, Florence

Steve Johnson, Copeland

David Jones, Ashland

Dorothy Jones, Topeka

Leo Jones, Johnson

Sylva Jones, Roswell, New Mex.

SOPHOMORES

Winifred Jones, Winfield

Joseph Melvin King, LaJunta, Colo.

Wendell Lake, Lake City

Charlotte Landon, Nanticoke, Md.

Eileen Lawson, Penalosa

James Lehman, Deer Creek, Okla.

Celesta LeMarr, Brame, Okla.

Frances Lent, Belpre

Clyde Lockert, Wichita

Ben Lowther, Winfield

George Major, Valley Center

Gene Manny, Winfield

Loren Matthews, Winfield

Marian Matthew, Bucklin

Lloyd Maxwell, Rock

Pauline McBride, Mayfield

Dorothy McClaren, Lewis

Paul Wilson, Winfield

Dunbar McLaurin, Langston, Okla.

Theodore Roosevelt Meier, Hitchcock, Texas

Doris Miller, Peabody

Lowell Miller, Peabody

Cleo Milliken, Augusta

Virginia Moore, Wellington

Helen Morris, Hugoton

Ray Overeem, Winfield

Lovina Paton, Oxford

Lucretia Peacock, Elkhart

Hortense Peck, Gordon

Cleo Phillips, Winfield





SOPHOMORES

Mildred Pike, Ashland

Robert Pinks, Winfield

Bill Porter, Winfield

Beulah Raypholtz, South Haven

Wendell Reece, Oxford

Dwain Reid, Winfield

Warren Rhorer, Lewis

Wesley Richardson, Erie

Jack Robertson, Oxford

Willa Robertson, Valley Center

Frances Rohl, Caldwell

Kenneth Rose, Winfield

Isabel Runyon, Peabody

Harold Sallee, Elkhart

Leonard Schiefelbine, Norwich

Dean Sewell, Pratt

Arloe Shelton, Foster, Mo.

Averill Skiles, Conway Springs

Ruth Slade, Wichita

Frances Smischny, Winfield

Inez Smith, Coyle, Okla.

Ruth Stewart, Nan, Siam

Pauline Snyder, Winfield

Dean Staats, Copeland

Milton Stocking, Winfield

Kathryn Stout, Winfield

Esther Stuber, Winfield

Lovell Stuber, Winfield

Virginia Stuber, Winfield

Lawrence Stude, Copeland

SOPHOMORES

Shirley Rose Suits, Bartlesville, Okla.

Fred Swoyer, Wilmot

Marjorie Thompson, Winfield

Robert Thompson, Medicine Lodge

Mrs. Temple Vollmert, Pampa, Tex.

Irene Vollweider, Oxford

Wendell Wade, Winfield

Cecil Watkins, Menlo

Dorothy Whitwam, Wichita

Helen Whitwam, Wichita

Lorraine Williams, Winfield

Josephine Wilmer, Winfield

Denzil Wilmoth, Beaver, Okla.

Martha Hildinger, Winfield

Emma Wimberly, Kinsley

Winona Wise, Penalosa

Maurine Woolard, Pawnee Rock

Glee Young, Pretty Prairie

Albert Blood, Winfield

Lewis Zimmerman, Lamont, Okla.

Paul Branine, Wichita

Victor Sponenberg, Winfield



AT EVENTIDE

The hours bring rest at close of time-worn day;
For then I love to stand on Sunset Hill,
Illumined with the sun's last golden rays,
And meditate while all is hushed and still.
My thoughts soar up o'er cragged rock and rill
And fly to other realms as homing birds;
I gaze out o'er the valley and I thrill

That I should be the one so thus bestirred,
I feel a joyous sense of time deterred,
To watch red radiant sunset turn to rust;
And vaporous clouds to snowy peaks transferred
Like autumn leaves that slowly turn to dust.
Yet Beauty's scenes are never of the past,
God's colors all are permanently fast.

—Virginia Moore



FRESHMEN

Lela Adams, Woodward, Okla.

Neil Adams, Sun City

DeWitt Ahlerichs, Winfield

Jack Alexander, Dodge City

Merlin Archer, Winfield

Wallace Bacher, Blackwell, Okla.

Lorena Barcus, Spivey

Joyce Bean, Anthony

Russell York, Ashland

Virginia Benson, Winfield

Wildora Bland, Argonia

Mary Blowey, Anthony

Glenn Bobst, Kingman

James Bock, Pratt

Helen Bolack, Dexter

Robert Boles, Wilmore

Lois Brakebill, Englewood

Caroline Brooks, Mulvane

Laura Burnett, Caldwell

Henry Buss, Udall

Ernest Callison, Norwich

Helen Callison, Norwich

Jacqueline Carter, Ulysses

Delmar Caywood, Wichita

Vernon Clark, Winfield

Maudene Clift, Winfield

Genevieve Cochran, Winfield

Donald Coe, Wichita

Jack Colbert, Mt. Hope

Ruth Cole, Winfield

FRESHMEN

Jerry Collier, Hugoton

Helen Cook, Stafford

Earline Cooper, Liberal

Kenneth Cooper, Geuda Springs

Claude Copley, Hazelton

Roberta Courtney, Lamont, Okla.

Jane Craft, Kinsley

Carol Crawford, Winfield

Ruth Curry, Newkirk, Okla.

Frances Davis, Norwich

Leonard Davis, Winfield

Wendell Davis, Norwich

Frank Dawson, Julesburg, Colo.

Marian Deever, Sedgwick

Pauline Dennis, Winfield

Dorothy Dieterich, Wellington

Verle Dobson, Winfield

Harold Dryden, Brush, Colo.

Martha Jane Duckworth, Spivey

John Duffy, Hennessey, Okla.

Josephine Elliott, Bluff City

Olen Erwin, Hugoton

Ruby Ewbank, Pratt

Hazel Fawcett, Winfield

Albert Floyd, Argonia

Zola Floyd, Argonia

Keith Franks, Winfield

Alyce Frankum, Winfield

Ronald Frank, Elmwood, Okla.

Raymond Geist, Penasola





FRESHMEN

Ruth Gilbert, Winfield

Aleen Gillespie, Augusta

Don Goforth, Winfield

Frances Graber, Pretty Prairie

Eugene Graham, Winfield

Bernice Gray, Liberal

Scott W. Green, Beaver, Okla.

Raymond Greenway, Hugoton

Robert Griffin, Chilocco, Okla.

Frances Ann Guy, Winfield

Merlin Guyer, Hugoton

Charles W. Hadley, Winfield

Marjorie Haines, Hutchinson

Margaret Helen Hall, Newton

Robert Hall, Winfield

Charles Hamilton, Dodge City

Evelyn Hammer, Cambridge

Rosa Lee Zimmerman, Dalton

William Harlan, Winfield

Lloyd Harp, Alden

Helen Haslet, Wellington

June Hays, Preston

Dorothy Herrin, Winfield

Wallace Hilfinger, Winfield

Mary Jane Hill, Winfield

Edgar Hinshaw, Winfield

Ida Hinshaw, Winfield

Orr W. Hodges, Augusta

Frances Hott, Winfield

Robert Howard, Winfield

FRESHMEN

Pauline Husted, Kinsley

Bernadine Hutchison, Tuisa, Okla.

Wesley Ingram, Spivey

Doris Jacques, Ensign

Elva Marie Johnson, Newkirk, Okla.

Evelyn Johnson, Galva

Shirley Johnson, Winfield

Bert H. Keller, Valley Stream, New York

Thoburn Keller, Newton

Patricia Kelley, Winfield

John Major, Valley Center

George King, Winfield

Marlys King, Haviland

Melvin King, Belle Plaine

Ralph King, Haviland

Beth Kingry, Kinsley

Mitchel Kingsley, Rock

Dorothea Klinger, Ashland

Charles Kraft, Medicine Lodge

J. D. Krell, Oxford

Budge Van Lee, Hutchinson

Katherine Lee, Cordell, Okla.

Lela Lippoldt, Kinsley

Juanita Looney, Winfield

Cecil Lynch, Hugoton

Viola McClure, Walton

Roy McCue, Lakin

Florence McIntire, Arkansas City

Gwen McMichael, Argonia

Lorene McSpadden, Moline





FRESHMEN

Elna Mathes, Conway Springs

Harley Matlack, Burrton

Meredith Mayse, Ashland

Ada Fern Meade, Pretty Prairie

D. D. Mickleson, Jr., Winfield

Alfred Miller, Copeland

Helen Milligan, South Haven

Neva Milligan, South Haven

Marguerite Molz, Hardtner

Harry Morgan, Richfield

T. D. Morgan, Winfield

Harry Morris, Hugoton

Alta Mae Morton, Winfield

Eleanor Mundis, Winfield

Edythe Murphy, Anson

Dortha Mae Neier, Mullinville

Elizabeth Nevens, Wilmore

Edgar Newland, Winfield

Edyth Newland, Winfield

Naomi Niles, Beaver, Okla.

Aileen Nisbet, Winfield

Agnes Nurse, Medicine Lodge

Harold Osen, Winfield

Don Osterhout, Winfield

Beatrice Parker, Little River

Darrell Peter, Pawnee, Okla.

Freda Plummer, Augusta

Pauline Ponath, Mulvane

Virginia Pool, Winfield

Louise Porth, Winfield

FRESHMEN

Gladys Post, Winfield

Floyd Priest, Winfield

William Ramsdale, Centerview

Clyde Renfrow, Beaver, Okla.

Virgil Rhoades, Ashland

Nellie Rice, Cullison

William Robertson, Oxford

Melvin Robinson, Viola

Alene Rogers, Lake City

Jane Roth, Bartlesville, Okla.

Willis Rutter, Geuda Springs

Eugene Sanders, Winfield

Jack Savage, Winfield

Grace Selle, Preston

Eleanor Lee Shook, Larned

Mary Stephenson, Little River

Paul Stitt, Liberal

Bill Story, Winfield

Arthur Stuber, Winfield

Irma Talbot, Haven

Louis Taylor, Okemah, Okla.

Kate Teel, Winfield

Harry Thurston, Leoti

Mattie Grace Trumbull, Dodge City

Lala Tull, Conway Springs

Reba Twyman, Zenda

Evelyn Unruh, Montezuma

Belle Vannatta, Boise City, Okla.

Elmo Van Valkenburg, Danville

John Voigt, Winfield



FRESHMEN



Oran Wadsock, Rock

Hazel Ward, Moscow

Edward Warner, Winfield

Leatha Marie Washburn, Quinlan, Okla.

Cordelia Watson, Winfield

Karl Webber, Winfield

Denver Wells, Belmont

Harry Wentworth, Southwest City, Mo.

George Williams, Marion

Dorothy Wilson, Winfield

Lawrence Lyle Wilson, Jr., Wichita

Mildred Wilson, Great Bend

Gale Wimberly, Kinsley

Joanna Wing, Marienthal

Elnora Woodward, Ness City

William Wright, Zenda

Betty Brooks, Burden

Lenora Coats, Plains

Robert Coe, Coats

Howard Henry, Sawyer

Stanley Quinby, Sun City

Ernestine Bowling, Winfield

Roger Hall, Winfield

Elvyn Robb, Winfield

RICHARDSON HALL

Morning comes—cool dawn. The perfect harmony of the birds, like ripples of song on the sacred hush of the dying night, rises in the thrilling chorus of eternal Spring. There, cutting the Eastern sky in vivid outline, it looms. More than a physical structure, more than the theatre of our labors, more even than the setting of our most beautiful memories, it is to us an inspiration to future activity—the symbol of our most cherished ideals.

—Charles Curtiss

SOUTHWESTERNERS

Throughout the countries of the world, in all the walks of life, in places of leadership and trust, stand noble Southwesterners. Given the training of the class room coupled with the high ideals of the campus here, these graduates are "speeding onward" the spirit of Southwestern. The roll has been broken by four score or more who have finished their tasks and gone to dwell with the immortals—the * indicates those of our friends who have left us.

*Compiled by Prof. W. J. Poundstone
Alumni Secretary*

1889
Amy Barnes Mills
Alvah J. Graham
*Olive Robertson Stubblefield

1890
*Frank C. Fay
Jennie Hefflin Cribb
Pearl Van Doran Tomlinson

1891
*Edward J. Kanavel
Samuel Howard Maxwell

1892
*Eugene Thomas Barrett
Gilbert Michael Barrett
Virgil White Hill
Lewellyn Allen Phillips
*Corilla Shreves Elder

1893
Elizabeth Barnard Duff
*Elmer O. Creighton
Letha Smith Norling

1894
Catherine Coffin Phillips
Mary Hamilton Wortman
Eleanor Hayes
*Walter F. Miller
*Chas. Augustus Rhiel
John Wesley Wetzell
*Cary R. Wood

1895
*Fred Herrick Grace
*Meddie O. Hamilton
*Newton A. Porter
James Albert Whitted

1896
*Josephine Barnard Embry
A. E. Hertzler
*J. F. Hertzler
Isaac Hedge
A. A. Parker
George W. Smith
Daniel Tear

1897
Claude M. Gray
Grace Raymond
*Henry P. Robbins
M. Bird Weimer

1899
E. N. Cunningham
Elijah Pilgrim Geiger
Rufus L. George
Chas. N. Gould
Chas. W. Hancher
Wm. Jacob Shull
M. Madeline Southard
D. H. Switzer
Viola White McNeil

1900
John W. Dibbens
Clara Gilmer White
Arthur Honnold
Arthur Martin
Forest H. Rose
Grace Rose Felton
Paul J. White

1901
Glenora Dawson Snyder
Edith Fidler
Jesse C. Fisher
Maude Anetta McMillen Smith
Bessie B. Moore
George T. Renner

1902
J. Ross Ferguson
L. J. Leatherman
*John F. Phillips
Myrtle Rose Law
Mark White

1903
Nina Della Broyles Hunt
Robert R. Hamilton
Alta Huston Wright
C. A. Kitch
*Peter Parker
*Estella M. Rosecrans
*Erwin F. Sitterley
Chas. E. Wright
Claude Wright

1904
Louis Allen
Warren W. Tenycart

Louis R. Hoff
Oscar Huddleston
W. A. Revis
*Jesse E. Rose
John Raymond Shidler
Edward Smith
W. T. Ward
Katherine Weimer Alfred

1905
Annie E. Bell
Wilbur E. Broadie
Ralph A. Felton
Harry K. Huston
*George J. Kraft
Perle Love
Ada McClelland
Riley E. Morgan
Estella Strother Beach
D. W. Von Scholtz
W. J. Weber

1906
Josephine Bell
Mary R. Bell
George H. Broyles
Berton C. Dubois
Chas. M. Hutton
David P. Hutton
Chas. E. King
Geo. T. McDermott
W. Bert McMillen
*Thos. Chas. Maxwell
*Lucius D. Moore
M. Wasmuth Parrish
Elsie Rupp Henkel

1907
Maude Andrus
Mille Naomi Bechme Willis
Olive P. Burchiel
*Geo. A. Gibson
Ada Herr
Maude Marshall Hersh
Peter L. Mawdsley
Walter E. Phillips
Eva J. Rosecrans
Orto O. Smith
*Estella Wells Dubois
Chas. D. Whitwam

1903
Ethel R. Aldis
Harry S. Baker
Erney F. Buck
Will V. Burns
*Viola M. Cleaves Mackey
Homer L. Glickler
T. Everard Hinshaw
Aurilla Hoagland Shuyler
*Minnie Mae Irwin Underhill
Geo. A. Kraft
Hugh A. Owen
Roy L. Smith
A. L. Snyder
Dot L. Spahr Sherman
Fred Torrance
Sam P. Wallingford

1909
Ella E. Bernstorff
F. H. Ebright
Elmer F. Farmer
Lucy Hunter
W. A. McDermott
John L. Renner
C. W. Severance
Lewis Simes
Myrtle Smith
*W. A. Wells

1910
Gordon Bailey
Asa Baker
Chas. W. Blanpied
Florena Cleaves
*Oscar Evertson
Joe N. Hamilton
Edna Hartman Gillespie
O. E. Hazlett
Pearle E. Hogrefe
Maude Kennedy Baker
Ada Morgan Brown
Clyde E. Muchmore
Guy B. Muchmore
Walter E. Myer
W. J. Poundstone
Blanche Rice Martin

1911
Steadman Aldis
Floyd Anderson
Ira V. Bernstorff

Anna Lee Buckley
Fred H. Clapp
Joseph H. Copley
Chas. E. Davis
Jesse R. Derby
Sarah DeVore Caldwell
Benj. W. Folsom
Willard Franks
Jas. LeRoy Glass
Emory Hunt
Fred A. Martin
Geo. W. Morgan
Grace Morgan Eckel
Merle Muchmore
John L. Murphy
Edith S. Randall
Josephine Scofield Smith
Hazel Shamleffer
Florence Stone
Oba Torrance
John W. Wengler
John B. Wesley
John P. White

1912
Leonard Bacon
Mrs. Ella Barkley
Edmond Q. Brothers
M. Ian Coldwell
Eula Creekmore Robbins
Arthur Crookham
Chester F. Davis
Capen A. Fleming
*Onita K. Gilbert Ausmus
Maude Haver
Luella Grace Hunter
A. J. Hutton
Wm. R. Hutton
Anna Margaret Learned
Frank Lindley
Wm. F. Little
Edna Lohrding Dellinger
LeRoy Nichols
Walter G. Parker
Claude J. Wallace
Lloyd Wells
Bertha Woolsey Ketsey
Glen Wycoff

1913
Orval M. Auner
Viola Burdette LeRoy
Wm. E. Burns
John H. Calbeck
Geo. H. Cavit
Monte H. Cloud
Helen Crawford
*Wayne Curfman
*Cecil Deist
Ruth Falls Nichol
Mrs. Franklin L. Gilson
Clarence Harrah
May Henninger Kantz
Ersie Houser Farrar
Helen Hunter Simes
Mabel Jennings Jones
John B. Kanagay
*Roy R. Rutledge
Carl Schmidt
Clarence Schroeder
Earl W. Simes
Opal Souders Yeoman
Paul R. Stevick
Warren Stevick
Leile Swartz Guy
Wofford Timmons
Cora B. Vaughn
Earl Walker
Edna Yetter

1914
Edna Bement Gray
Warren Bernstorff
*Carmel Brown
Cecil Burchiel
Carrie Carlisle
Carl Carlson
Leander C. Dryden
Arthur Dungan
Howard Finley
Lillian Greer
Anna M. Greve Schmidt
J. Fuller Groom
Hattie Halverstadt
Vera Hartenbower Blood
Mabel Kanaga Schrepel
Ralph Kantz
Marie Kerns Carey
Claire Lewis Rutledge
Celia Light Richards
Tien Lan Lin
Gaile Lindholm King
Frank McKibben
Lucile Millsbaugh Nicholson

Neva Millsbaugh
Alex Morgan
Edna Morgan Calbeck
Chas. D. Norman
Nelle Roberts
Grace Rutledge Shuler
*Walter Savage
John Sherman
Lucile Stevens
*Irwin Stickel
Guy C. Tetrick
Herbert Vaughn
Merb Warren
Annetta Webb
Lena Williams
Frank Yeoman

1915
Pauline Abernathy Crookham
E. E. Anderson
A. J. Bishop
Burch Boys
Olive Bray Gates
Anna Burdette
Mei Lien Chung
Inez Coldwell
Agnes Cole Vandaveer
Alvin P. Cummins
Ray Dielman
*Lloyd Edwards
Henry J. Fleming
Nelson Gardner
Cora Gault
Roy L. Gibson
Ethel Graham Bernstorff
Rufus Gray
Lorene Hamilton
Ruth Hoath
Folsom B. Jackson
Mabel Kriner Smith
Pearl Mann Seloner
Fern Maurer
Clarence Mullendore
Alma Richart
Erhel Richard Davidson
Pearl Schroeder Fieser
Viola Strait Buhring
Leslie Templin
Lester Templin
Jennie Walker
Annie Williams McNary
*Bernice Williams Hendrickson
Oral Wolf

1916
Dora Baker
*Paul Bennett
Ruth Bickford Leimbrock
Harry G. Carlson
Gertrude Crick Derby
Sampson Ding
Agnes Fincham Sealey
Blanche Fincham
*Eliza Marie Gilchrist
Wm. E. Harper
Minor E. Hickman
Ralph Holmes
Mary Helen Jennings Minges
Henry Jordan
Chas. Kendall
Lucille Lynch Hiebsch
Ward L. Miller
*May Randall
Ernest Reid
Frank W. Robieson
Geo. Alden Salsor
Hazel Violet Scandrett
Edna Irene Schul
Nevin Ross Shade
*Allen Eugene Smith
Lewis Oliver Smith
Laura Stalder Shade
Marie Miller Tandy Boys
Howard White
Thos. A. Williams
Lena Louise Wilson Schroeder
Geo. Zeigler

1917
Newman Baker
Alma J. Bernstorff
Adabell Burchiel Harris
Edith Burns Chenoweth
Lillian V. Chapin
Roy Compton
C. H. Coppedge
G. L. Coppedge
Fern Creekmore King
Lloyd Crick
Mabel Croson Warren
A. E. Davis
*Mattie Denning
Ruth O. DeTurk
Gladys F. Ding
Wanda Dobson Crawford

Milton H. Dudgey
Avis Dungan Carlson
Vida Eckhardt Shaefer
Edith Fleming Clark
Lydia Geeslin Gibson
Grace Graham Morrow
*Irene Greider Deist
W. Glen Harris
G. Clair Hester
Anna Hinshaw Shidler
Lillian Kennedy
Clara Langston Beeton
Ola Mary McClusky
Irma Macklin Palmer
Isaac V. Martin
Dorothy Meade Pellett
Leroy G. Moore
Viola Musick
John Payne
Ora Prather Kuhlman
J. E. Robinson
Earl B. Ross
Cecil Rutledge
Everett Shell
Lydia Swartley
*Lawrence Ray Warren
Elsie Weathered Ramsdale
Byron White
Jessie Whitt
Ien Ming Woo
Paul Woodard

1918

Kelly Beach
*Avice Bement
William Berges
Ruth Bollinger King
Brunner M. Burchfiel
Dorothy Cate
Helen Dalbom Selfridge
Katherine Foster Hargraves
Albert Greenler
Mazy Grimes Ledeker
O. R. Henderson
Lois Hunter Hiesch
Sabina Lighty White
Margaret Lohan Johnston
*Inez Lynch
B. G. McCormick
Ernest McInnes
Ira Newman
Yuan Kawai Ou
John H. Parker
Charles Peppin
Dessie Pope White
Harold Robertson
Harold Wakefield
Florence Walker
H. Ogden White
Hazel Wilson Powers
Edith Winn
*Chas. T. Wood

1919

*Wade Aukerman
Ernest Bartlett
Olive Bishop McAlear
*Howard Burnett
Leota Butler La Paz
Anna Cameron Wakefield
Annis Carter Brown
Jennie Cavitt Robinson
*Grace Cheatham
Doris Combs Story
Iva Conner
*Mary Cornick
Ruth Cox
Faye Crawford Wacknitz
Ellis Cummings
Frank Doughty
Neva Drummond Foley
Ester Felton Byrne
Helen Graham
Marguerite Gregory Lowe
Alice Hamilton
Addie Harper Park
Guy Hartman
Minnie Hartman
Edna Humble Reiter
Everett Johnson
Lester Ketchum
Howard McQuerry
Lois Martin Kimmell
Velma Meinzer Turner
Hazel Oliver Hatchett
John Perez
Chas. Schrepel
John Mark Scott
Ralph Simpson
Roy I. Snider
Eloise Somermier Newman
Verne Stansbury

Alice Steele
*Stanley Stickel
Ruth Stout Penniwell
Letha Widener
Jessica Wilson

1920

*Elizabeth Blackburn Copley
Esther Bray Myers
Donald Carttar
Ulla Clover
Claude Copley
*Daniel Crabtree
Ernest Dalbom
Chas. J. Dennison
Lora Edwards
Lucie Elliott Ball
*Gladys Ely Evans
Beulah Frazier Crick
Katherine Fulton
Leona Hauley McKeever
George Harper
J. H. Harris
Virgil Hayes
Lucy Headrick
Eathel Hodge Johnson
Ruth Holmes
Lila Horton Templin
Olive Hull Chandler
E. Lovette Keasling
Carl Kessler
Albert R. King
Albion R. King
Edith Klink
Will M. McGort
Mernie Mahannah
Mary Marshall Harding
Glen Maurer
*Earl D. Myers
Olney Newman
Cora Puckett
Minta Queen Armitage
Carl C. Riggs
Vincent Rosecrans
Merle Rymph
*James Sealey
Everett Selfridge
Archie Shaftsbury
Waldo Steiner
Ralph Templin
Irma Thomas
Adel Throckmorton
Elsie Waddle
Norman Wilson

1921

Bert Beach
Lloyd Berthoff
Mary Bigler
Esther Blackburn
Lynn Bloxom
Charlotte Burgert Glaser
Orville Calbeck Becker
Hazel Calvert Heywood
Lewis Clark
Lillian Cloud
James Crawford
Lavere Davis
James Kelsey Day
Pearl Englehardt Notz
Emmitt Evans
Louise Falls Hillis
Helen Foster Martin
Rilla Fowler Martiney
Bessie Frederickson
Lawrence Green
Averil Grimley
Lydia Guthrie Baker
Clara Haas
Theron Hinshaw
Paul Holmes
Ruth Hoppock
Otis Hornaday
Pearl Jennings Erickson
Edwin Johnson
Chas. Kaster
Vincent Keyes
Lucy B. Krapp Kreiger
George Leatherman
Paul Wm. McCaffree
Lois Marshall Shuler
Ormal Martiney
Blanche Miller
Charlotte B. Neff
Bess Oerke
Clare Prather
Bertha Price
John Queen
Chas. Reneau
Clara Belle Robinson Haxton
Ethel Rodman
Gladys Scott

Mary Eleanor Simpson Williams
Carol Spittler
Richard Steiner
Lovanna Stone
Mary Story
Edna Ann Tennyson Carttar
C. C. Trillingham
W. J. Van Cleve
Beulah Vaughn
C. Ray Waddle
Merrill Wainscott
Darwin Wells
Chalcea White
Catherine Wrenchey
Floyd Yarbrough

1922

Carol Albright Collinson
Grace Arnold
Percy Barrow
Blanche Bloxom
Carlisle Bloxom
Ralph Bloxom
Evelyn Boyle Byler
J. W. Brown
Minter Brown
Carmen Carey Harper
J. W. Carrier
Eloisa Cavitt Newman
George Cawthon
Janette Crawford
Edith Denton
Phillip Dibbens
Mary Browning Divelev
Clifford Dougett
Charles Dunn
J. L. Englehardt
Angell Falls
Pauline B. Fleming
J. Silver Fuller
Lillian George Leatherman
Harold Glaser
J. Paul Groom
Maude Harper Noble
James Lee Harris
*Leota Hartenbower
W. H. Johnson
Dwight M. Kirch
Mary Kroeker
Goldie Lawless Rencau
J. Buren Linthicum
Myrth B. McCaugh
Emory McNeil
Mrs. Emory McNeil
Pearl McNeil
Emma Lou Messerli Yoder
W. T. Merthvin
Paul Moore
Lester Morgan
Onis Morgan
Bertha Musick Rutledge
Donald Nicholson
Eulah Belle Orr
Oliver Parker
J. C. Peniwell
Ruby Perkins
Alma Powers Williamson
Viola Reece Morgan
Lillian Richards
Margie Rickard
Joyce Robertson
Gordon Scott
J. Lester Simpson
Elizabeth Stewart
Lulu Stewart
Beth Thompson Wells
Clyde Totten
Helen Tucker Robinson
Jessie B. Wallace
Carl Warren
Jesse W. Williamson
Ambrose Price Woodard
Glenn E. Yoder
Howard Yoder

1923

Ramona Ahrams Gilbert
Ralph Adams
Edith Alexander Weiss
Lenore Aller Poundstone
Shailer Arnold
Gladys Axtell Cleavenger
Rex Bloxom
Glen Boory
E. L. Bradbury
Hansel Brooks Storey
Wm. E. Callahan
Mabel Calvert Reif
Lucille Campbell
Raymond Carey
Malnor Coe Peterson
Inez Crick Cooley

Irene Crick Gardner
Cecil Crocker
Mark Culbreath
Vida Dettler
Roxy Devore Fox
M. C. Dorsett
Harry Dunn
Elsbeth Eberhardt
Lucille Eberhardt
Esther Edwards
Julia B. Emery
Minnie Felt Williams
Ruth Fowler Bryant
Beryl Freeman
Geo. Gardner
Homer Godding
Walter S. Goode
Virgil Graham
Edna Greenbank Osborn
Opal Gutheridge Wells
Glenn K. Hamilton
J. Lester Hankins
Fred Henry
Emeline Hershey Davis
Hazel Hershey Curtis
Jessie Hershey Rymph
Marten Holm
Edith Hood
Thelma Hough Lyons
Ernest A. Hull
Harold Hulpieu
Forence Irwin
Ida Jacobus Heischman
Clara Jolliffe Warren
Helena Jorgensen Sauer
Arthur Kahler
Anna Keaton
Helen Lawrence Throckmorton
Frank Leatherman
Pauline Leidy Harris
Arnon Lenz
Esther Lutz
Raymond McGinn
Frances McKinley Reece
Phillip McMullen
Mildred Miles Schul
Glenn Miller
Margaret Miller
Ruby Miller Alcorn
Ruthella Miller Evans
Earl Moore
Maude Morgan Adams
Howard Nelson
Lyle Newman
Marie Peddecord
Hoyt Piper
Edith Poore
Carl Quenzer
Gladys Roderick
Donald Ross
George Ross
*Paul Rutledge
Levi Rymph
Pearl Sauer
Fred Schul
William Shuler
Bertha Snyder Wonder
John Steiner
Esther Storey Litwiller
Merle Suter
Russell Throckmorton
Neva Trexler Brown
Ellen Van Cleve
Erna Wainner
Niles Walker
George Warren
R. L. Wells
Harold White
Mildred White
Minnie Williams
Emma Wilson
Elsie B. Wulfmeyer McCaffree
Faye Zuhars Leatherman

1924

Eunice Abbott Goode
Fern Axtell Cleavenger
Margaret Axtell Hollis
Helen Baker
Everett Barnes
Percy Beck
Marjorie Beer Daniels
Leslie Bender
Elizabeth Benedict Rosecrans
George Berges
Ethel Blood
Porter Bower
Paul Brace
Mabel Breneman
Chas. O. Brown
Carolyn Burdick
Cecil Casburn

Elmer Cheatum
Hazel Cheatum Crocker
Dorothy Coe Fuller
Esther Cragun
Ermal Cummings McMullen
Marie Dennis Linthicum
Reba Denny Linuh
Mary Dettler John
Russell Dipman
Henry Dorsey
Lulu Smith Dorsey
Lola Grace Downs Metsker
Lucille Easter Endocott
Dean Farnsworth
Mildred Ferguson Pennington
Martha Foster
Ruth Foster Daniel
Flossie Fuller
Dorothy Gebhart
Marc Godding
Hallie Goforth Penland
Harold Grantham
James Greenbank
Edna Greener
Jessie Groves
Lillian Haas Cortelyou
Winifred Haas Stocking
Chester Haines
Elise Harris Bender
Marion Harris White
Mae Hatfield Neville
Vernon Hayes
Earl Henry
Clay Huff
Ruth Jennings Brumage
Laura Jensen Bradbury
Winifred Julian
Thelma Keating Stevens
Inez King Cox
Clarence T. Little
Neil Logan Thompson
Gladys Lona Falls
Myra McCaffree Bloxom
Nellie McEwen
Marie McGinn Blake
*Everett McMurray
Archie Madison
Dorothy Martin Newman
Roy Metskes
Roy Miller
Josie Montgomery Russell
Alvin Murray
Grace Neville Lawrence
Willis Neville
Wilma Newman Seacat
Edith Nicholson Dolliver
Lydia Notz
Ethel Ore Weigle
Alice Papes
George Parkhurst
Donovan Poorman
*Elma Prather
Edith Prosser
John Prothro
Bonita Ralston Roberts
Dorothy Read
Audris Rife
Mildred Roberts Steiger
Ethel Rogers Miller
Merwin Rutledge
Cathylene Salser Wood
Will Seacat
Boyd Smith
Dorothy Smith
Herbert Smith
Mildred Smith
Hazel Soule Klug
Lola Squire
Chas. Stewart
Clyde Stocking
Max Stocking
Kathleen B. Stroutmore
Taylor Thompson
Gladys Vail
Ida Wainner Linderman
Byron Waite
Ethel Walden Henry
Florence E. Warren
Hazel Welker Murray
Georgia Williams Bloxom
Ina Williams Maddox
Valois Williams Burns
Vida Wright Freeman

1925

Marvin Alcorn
Beatrice Alexander
*Gertrude Alsbaugh Hetherington
Ralph Baird
Bernice Barber Linthicum
Hazel Bender Kroth
Elaine Bowman

David Boyer
Faye Boys
Iva Brandon Treadway
Frank Brown
Buell Cairns
Ruth Catlin
Allen J. Cheatum
Ella Christenson
Leslie Clodfelter
Ray Cook
Herman Cortelyou
George Cushman
Hazel Denison
Faye Dennis
Carl Dunn
Arthur Dyck
Eugene Ellwell
Marguerite Falls Cashburn
Marshall Finley
Ralph Fry
Helen Galloway
Elsie Garfield
Joseph Goldsmith
Dorothy Gray
Dorothy Green Linscott
Faye Griffith
Gilmer Groom
Wm. T. Hamilton
Pattii Handley Walker
Willard Harnden
Burnace Harrison
Innis Harris
Lula Hendrick
Paul Henshaw
Reba Hoffman King
Estella Hottenstein
Ruth Jensen Cook
Cathryn Kerr King
Emory King
Cora Kinley
Elsie Lawless Culbreath
Milo Linthicum
Lewis Longworth
Cleveland Lutz
Fenton McAllister
Esther McMurry Starr
Glenn McGibbon
Myrtle McGaugh
*Oolita Mahen
Oscar Maddux
Ira Madison
Ruth Milford
Olive Miller Palmer
Leah Moore Bressler
Blanche Morrison Shirk
Blanche Mosler Day
Margaret Murray Thorp
Gladys Musick Phares
Genevieve Myers Stelloh
Leonora Myers Clay
Golda Newman
Carl Noell
Downing O'Harra
Louise Palmer
Geneva Parker
Pauline Parker Koesler
Eugene Pennington
Rachel Pennington Van Cleave
Ruth Plank
Joe Ploughe
Philip Pond
Grace Quigley
Geneva Ralston Duncan
Thelma Rawlings Engler
Mildred Rickard
John Robinson
Boyd Roderick
Harold Russell
Hla Salser Markel
Gladys B. Saunders Nicholson
Robert Selle
Lucella Serviss Sutton
Lucy Serviss
George Sharp
Alvena Sims Kinney
Carroll Smith
Reynold Stelloh
Alice Sundt
Marjorie Switzer Wilson
Hester Taylor Peverley
Helen Thompson
Esther Treadway
Leona Underwood Brencgar
Joe Van Cleave
*Chester Varner
Edna Vermilya Harvey
Geraldine Phillips Voris
Ralph Voris
Alice Walker Kiser
Harry Walker
Nadine Wallace Greenbank
Donald Wheat
Eona Wilson

Glenn Witherspoon
Thelma Wood Scarlett
Dayton Yoder
Ernest Zeigler

1926

Marian J. Alexander
Rufus C. Baker
Pauline Beach Varner
Raymond Bird
Elizabeth Brown Teed
Harold Bryant
Nina Burdick Bucklin
Thelma Bussard
Olive Callahan Garfield
Irma Calvert Shaver
Faith Chappell Callahan
Hung En Chen
Alma Clark Garrison
Florence Clark Huff
Kenneth Coldwater
Grace B. Compton
Hershel Cornwell
Dessie Craig Dunn
Emily Cramer Stowell
Alice Cramm Wiggins
Ruby Crick Terrey
Alene Deal
Erma Dibbens
Mildred Diehl
Maurelle Dobson
Oma Drake Porter
Maude Duffy Bryant
Mildred Eckley White
Harrison Fine
Marion Foster Paxton
Ruth Fox Porter
Mrs. Elsie S. Freeman
Harold Froning
Verl Fry Suter
Wanda Fry Walker
James Gardner
Marvin Garfield
Helen George Swanson
Sylvia Glenn Hunnewell
Esther Godding
Genevieve Gossling Ridgeway
Mary Lucille Green
Russell Green
Albertine Grimsley Brown
Pearle Hamilton
Donald Harrel
Eloise Hattaburg Kaufman
Alfred Hawkey
Alberta Haynes McMurray
Cecil Headrick
Alma Hentz
Wm. S. Herrington
Dean Hetherington
Lois Hill
Haskell Holmes
Keng Huang
Merrill Humburg
Frank Jobes
Wilfred Johnson
Edward Johnston
Mary Kendall Bishop
Lee King
Rufus King
Phyllis Kirk Case
Willard Kiser
Katharyn Kitzelman Bodeen
Florence Knepp Patterson
Milton Kroth
Opal Lacy
Paul Lawrence
Ruth Leatherman Poe
Szu Chih Liu
Ada Pearle Lowe
Fern Lutz Kenton
Edith McCabe Dryden
Charlie McCalah
Lucille McCall
Julien Manser
Edwin Mattison
Dorothy Meyer Humburg
Cora Misbach Johnson
Louise Murphy
Clara Murray
Mildred Nash Daily
Emma Notz Noell
Gladys Norton Eckhoff
Winona Patton Porter
Helen Peine Waite
Mamie Phillips
George Putman
Madge Quigley
Myrtle Reece Mattison
Pearle Reece
Gladys Reid Tretbar
Edna Ring Terrill
Gladys Robertson

Nina Robertson Gardner
Marjorie Roderick Kanehl
Kenneth Rothrock
Ruth Elaine Royce Karns
Iva Rutherford Chapman
Dorothy Scaer Cramerer
Edward F. Schmidt
George C. Schroedel
Arthur Seeley
Marie Shaver West
Maurietta Shoemaker
Theodore Shull
Cecil Snyder
Howard Snyder
Emma Stewart Seeley
George Stueppelwerth
*Henry Stueppelwerth
Farie Stratton Kirk
Flossie Sullens Moody
Leonard Sutton
Alfred H. Thomas
Lois Van Valkenburgh
Paul W. Walker
Dorothea Welsh
Geneva White Hewitt
Willbur White
Jessie Williams
George S. Wilson
Charles Winter
Glenn Wisler
Doris Ann Wright
Grace Wright Dufford
Lucile Wright Ploughe
Ralph Young
Gertrude Zink Crofts

1927

Abbie Adams Dressler
Cecil L. Adams
Ruth Jean Bailey
Chester Baird
J. Wesley Baker
Eva Bales Foster
Flossie Bayne Chamness
Caroline Beason
Glenn Bickford
Frank Bigler
Chester Bower
Leo Branham
Robert A. Brooks
Chester Brown
Florence Brown Brikham
Laura Brown White
Ruth Anne Burns Marten
Bertha Cain
Ersal Cain
Edna Calais Stone
Edna Cavender
Wanie Condit Froning
Carl Coover
Deborah Crandall
Mary Crow Hawkins
Ruth Cummins
Ruth Curfman
Mrs. W. S. Dalton
Roy Davies
Hazel Beck Davis
Thelma B. Davis
Gladys Denny
Morris Dettler
Adaline Dick
Lucille Doty
Mrs. Marie B. Douglass
Alice Dunkelberg Kling
Alma Eberhardt Feterstone
Arthur Eberhardt
Fred Eckhoff
Elizabeth B. Everly
Ina Mae Faubion Wilson
Dana Fine
Roy Flaherty
H. I. French
Roosevelt Fromme
Louisa Frusher Stairrett
Ethel Fulton Remy
Herbert Galloway
*Franklin Golden
Elizabeth Graham Vance
Hazel Green
Lucile May Green Powers
Phoebe Greenbank Len
Grace Hazen
Jessie Hixson
Adda Hottenstein
Helen B. Huffman
Joseph Hume
Alice Jennings Clayton
J. Ward Jennings
Volney Johnson
Naomi Jones Latham
Helen King Graebner
Esther B. Kiser Felt

Warren Kleinfelder
 Aileen Klink
 Velma Kuhl Kleinsteinber
 Lauvera Lehman Reynolds
 Glena Mattison
 Neva Little Mattison
 Riley Maxwell
 Gladys Meador
 Walter Menzies
 Edna Miller
 Leona Miller Cranston
 Gertrude Moore Haynes
 Lena Mull
 Irene Murphy
 Edith Mure
 Clarence Newman
 Hazel Nichols Matthews
 Verna Nye Camien
 Nelle Oldham
 Opal Orr
 Mabel Padley Stroebel
 Royce Phillips
 J. Frank Pitman
 William Powers
 Nellie Putman
 Wm. R. Ravenscroft
 Blanche Reynolds
 Ruth Roberts
 Chester Sargent
 Henry Scandrett
 Agnes Scott Newman
 Delbert Scott
 Grace B. Sellers
 Edith Sloan Williams
 Marjorie Smith
 Howard F. Smothers
 De Elbert Stephan
 Frank Stickle
 David Stipe
 Virginia Stott Griffith
 Harriet C. Taylor
 Bruce Truesdell
 Margaret Varns
 Lloyd Wayne Vickery
 Helen Walton
 Roma West Galloway
 Howard Wheat
 Forest White
 Wayne White
 Mary Wilkinson
 Alice Pehrson Williams
 Arthur Williams
 Edna Williams
 Marion Wolfe
 Wanda Zirkle Briix

1928

Susie Barnett Johnson
 Mace V. Benson
 Ella Lydia Bebermeyer
 *Majorie Benedict
 Ada Jean Berthoff McClure
 Oliver Beumer
 Lida May Bieser
 Wm. R. Blake
 Flora Grace Bower Groendycke
 Lois Maurine Brady Rutt
 Alta Vivian Brockman Games
 Velma Mable Brooks
 Hugh Brownfield
 Floyd M. Burke
 James Alvin Burton
 Edmund Cairns
 Maureen Campbell Hawkins
 Esther Cawthon
 Bertha Clark
 Greta Cliff
 Irma Beatrice Cloud Herrin
 Miriam A. Cloud Murray
 Harold Westall Connors
 Marie Eleanor Corrie King
 Carroll Caltin Cranston
 Isaac Marion Crew
 Rubie Pauline Dennis
 Harry Dettler
 Augusta Dorschuck Curtis
 Zelma Charlene Eaton Bickford
 Lavone Edwards
 Elizabeth Elder Grantham
 Lula Esther Felt
 Zelia Jane French
 Alleen Blevins Gafney
 Don C. Gafney
 Naomi Garner
 Ruth Goe McNay
 Effie D. Goodnight
 Helen Clara Grawe
 Martha Haas
 Lawrence Hall
 Maurine Hammond Doud
 Basil Harris
 Mary Love Hayes

Mildred Hildebrand Johnson
 Robert Leroy Hillrup
 Norman Hinds
 Edna Marie Hoelscher
 Everette Holman
 Te Cheng Hsieh
 Amelia Hughes
 Esther Lillian Hulpieu
 Mollie Cloud Huston
 Velda Leona Jefferies
 Lyman Johnson
 Madge Johnson
 Victor Harold Johnston
 Cleta Keck
 Don Kitch
 Velda Pauline Klink Gochis
 Edwin Knowles
 Evelyn Larsen Gryboskie
 Wilmer H. Learned
 Ethel Lee Thompson
 Ruth Lewis
 Madge Wilma McCandless Slade
 Violet Marie McCormick
 Elmeretta Martency McCabe
 Clifford Lee Moody
 Clara Moore
 Florence Leonore Murphy Schawlt
 Edna Murray
 Joseph Neville
 Marie Nellie Newell
 Grayson Nickel
 Eva May Orr Parker
 Ellis Ott
 Helen Owens
 Glen Palmer
 Yasmin Peters
 Ray Porter
 Robert Porter
 Pearl Edna Ray
 Everett George Reed
 Lois B. Rice
 Frances Susan Roderick Snyder
 Ruth Elizabeth Roenbaugh
 Ruth B. Rogers
 Byron T. Rowell
 Catherine Schriver Coover
 Freda Scoggins
 Vivian Sharp Woodfin
 Albert J. Shmidt
 Arka Shoemaker
 Virginia Smith
 Florence Catherine Sporenberg Fine
 Lloyd Garrison Stateler
 *Edith Stewart
 Flossie May B. Sullens
 Dorothy Suter Evans
 Joseph Swartz
 Andrew Swayer
 Fred Hawkins Taylor
 Maxwell Thomas
 Grace Turner
 *Esther B. Van Cleave
 Harria Russelle Walker Ling
 Vera Washburn
 George Owen Watson
 Viola Jennie Wentworth Kemp
 Pauline Willey Blake
 Esther Winkelman
 Franklin Wonder
 Avel Wright Holcomb
 Lucy Grace Wright Woodson
 Helen Peter Yoder
 Opal Alice Young
 Georgia Zink Griffith

1929

Alice Clarisse Aldridge
 Alvin Allen
 Martin W. Baden
 Roy T. Baker
 Georgia Frances Ballard
 Alfred P. Beale
 Winnie Ellen Bender Anderson
 Ruth Benedict Woodson
 Ruth Blackburn
 Frankie L. Bouye
 Ruth Breitenbach Hogue
 Muriel Brooks
 Leota Brush Rotts
 Emma Marie Burdette
 Helen Combs
 Winnie Condit
 Presley Cowan
 *Lutie H. Cowles
 William H. Crawford
 Vera G. Davies Rinkle
 Dorothy Adelle Davis Miller
 Clayton S. Dettler Hendricks
 Hilda Irene Dettler
 Helen Irene Drake Stander
 Mildred Winifred Drake
 Bruce Ralph Dressler

Manford Lee Edgington
 Annetta Henry Evans
 Helen Frances Evers
 Edna May Ewert
 Square K. C. Fang
 Floyd E. Fassnacht
 Ruth Elizabeth Felt
 Mary Carolyn Frankum Winslow
 Harriet Melissa French Gibbon
 Erma Pedigo Fromme
 Lillie Hallee Frye
 Milton V. Gafney
 Glen W. Gagnebin
 Joe Gagnebin
 Annafred Galloway Avery
 Faith Galloway
 Matilda Cecil Garlinghouse McGibbon
 Hazel Beth Gilmer
 Arzy Robert Gray
 Lois Lucille Green
 Charles O. Guthrie
 Iva C. Haines
 J. Foster Hamilton
 *Goldie Helen Harp Smith
 Florence May Hassinger Jackson
 *Josephine Haynes
 Leah Mae Hentz
 Clark Herrin
 Lois Hershey Manley
 Gertrude W. Hoener
 Olive Alice Hoffman Brachear
 Milton Holcomb
 Nellie Fern Hottenstein
 Mary Jane Hubbard
 Merle Hubbard
 H. Coye Hubbs
 Josephine Elizabeth Hulpieu
 Lerland Hyndman Richardson
 Martha Ruth Jacobus
 Josephine Johnson
 Bernice Pauline Julian
 Claude Keltner
 Fern Knox Fine
 Dorothy Konantz Pettit
 Thelma M. Lamb
 E. Wilbur Lander
 Ethel M. Learned
 Evelyn Lee
 Arleen Lehman Pierce
 Waunita Leurance
 Jess Lockert
 Ruth Long Guthrie
 Lucille Lorton Watrous
 Kathleen Mildred Love
 William Ross McClure
 Kenneth H. McGibbon
 Harriet McGregor
 Dorothy McManis Hubbard
 Helen Manser Cain
 Peter C. Martinez
 Lois Vivian Manud Cain
 Paul Canfield Mawdsley
 Clarissa Mead-Wheat
 Helen Mead
 Ruby Mider
 Doris Daisy Miller Spohn
 Roy Harold Miller
 Mabel Ida Newcum
 Martha Elizabeth Noell
 Mary Pearl Noell
 Charles Edward Nold
 John Lawrence Oncley
 Helen Prather Swartz
 John Burris Price
 Mabel Lucille Reed Tanner
 Genevieve Lenora Regie Oncley
 Velma G. Reneau
 Carl Richardson
 Sarah Riley
 Lorita Baker-Robertson
 Virginia Robertson Beale
 William Robert Rolingson
 Robert M. Sandford
 Bessie H. Saylor
 Louis W. Scott
 Edith Pearl Seely
 Evelyn A. Seely
 Orville Seeyers
 George A. Smeltzer
 Murrel K. Snyder
 Ermin Murphy Stateler
 Merle Matilda Steinberg
 Ward Sloan Stuber
 Ann Sturhann Foreman
 George G. Swartz
 Helen A. Swenson
 Martha Elizabeth Swayer
 E. Russell Tanner
 Christine B. Taylor
 Effie Louise Thomas
 George J. Thomas
 Irene Wallace Ross
 Leland H. White

Erma Pauline Zeigler Lynch
 Joe A. Zile
 1930
 Kenneth Althaus
 Earl Ames
 Hildred Applegate
 Samuel Avery
 Erma Baker Rowell
 Dore Baker
 Goldie Barry Judd
 Dorothy Black Lill
 *Ruth Blunk
 Henry Bowman
 Verl Charter
 Alma Cochrum
 Ward M. Cole
 Dennis Cowan
 Don Davis
 Esther McCormick Deimer
 Opal Diehl Tonkinson
 Cathrine Dodge Reid
 Grace Dressler
 Marjorie Duhnerstein
 Glen Dunkleberg
 Eudora Edmiston
 Clyde Ernst
 Lephia French Giles
 Grace Frusher
 Mary Kathryn Fulton Brooks
 Bryce Gieckler
 Pauline Graham Ward
 Vesta Gray
 Kenneth Green
 Leola Green
 Lillian Utterback Griffith
 Joyce Griffith
 Mary Guthrie
 Pearl Haas
 Clarence Ham
 Thelma Ham Ernst
 Lois Hardesty
 Dwight Hardy
 Henry Hardy
 Margaret Harnden
 Darrel Hatchett
 Wayne Hatchett
 Gladys Hazen
 Rey F. Heagy
 Luther Henshaw
 George Ho
 Ralph Hodge
 Harold Hoelscher
 Owen Hubbard
 Dale Huddelson
 Catherine Hudson Hancy
 Margaret Hulpieu
 Glen Humburg
 Kenneth Hunter
 Sherlah Jarvis King
 Vida Jennings Hardy
 Allen W. Judd
 Gladys Judy
 Edna Julian
 Hazel Kellams
 Lloyd Kellams
 Sadie Kerr Eads
 Kenneth Kitch
 Helen Koons
 Freda Lane Burke
 Paul Lewellyn
 Emery Lewis
 Laurence Ling
 Delton Lowry
 Elizabeth McCall Martin
 Berta McClintock Crawford
 Charles McCombs
 Thelma McKey Johnson
 Garland Matthews
 Ruth Mendenhall
 Mrs. Jessie Mercer
 Gwendolyn Miller Campbell
 Elma Moore Radley
 Elwood Moore
 George Moore
 Charles Nichols
 Edelweiss Northup
 Allene Osen Gray
 Bertha Overman Wollman
 Dorothy Parsons
 Margaret Phillips
 Gladys Pittman Ramsey
 John Porter
 Hilton Prather
 Carl Radley
 James Radley
 Everett Reed
 Luella Reeve
 Valtos Richardson
 Vernon Robertson
 Beulah Robison
 Randall Royce

Mrs. Zelma Kipp Russell
Margaret Seacer
Mary Scott Welch
Orville Seavers
Chester Shepherd
Vernon Shepherd
Leonard Shelton
Myrtle Shurcliff Hainline
Forrest Skiles
Carl Smeltzer
Lloyd H. Smith
Mabel Songer Wonder
Dessie Stalnaker
Lewis Steiner
Clyde Stocking
Marjorie Strother Petty
Ralph Stutzman
Thomas Sun
Mildred Swenson
Inez Taylor Cassidy
Donald Teed
Irene Thackeray Gately
Annabelle Thomas
LaVon Thompson
Ralph Tibbitts
Dorothy Trego
Carmen Vincent
Vera Volkman
Thelma Ward Jones
William Ward
George Warner
Clurd Watts
Salome Withee Cowan
Charlotte Wolf Humburg
Elizabeth Wonder
Josephine Woodell Hochschie
Hobart Wright
Dibert Yeagler
Harley Zeigler
Veda Zirkle Vickery

1931

F. Eugene Alban
Frances Ambrose
Lila Maurine Berg
Bertha Gladys Bolack
Gladiere Bower
Bryce K. Brown
Leitha Delouse Bunch
Lyman G. Burgess
Ruby Marie Burgess
Charles Calvert, Jr.
Ruby Hill Cole
Mary Margaret Corrie
Harold Pink Cotton
Goldie Ellen Cowman
Edwin C. Crank
L. Erlis Cranston
Mildred Cruise
Anna Mar. Cundiff
Keith Davis
Margaret Z. Davis Randels
*Dorothy Dettler
Erma Helen Dibbert
E. West Drennan
Opal Dudgeon
Ruby Lee Eshelman
Clemmie Farris
Grace Delaine Fauss
Wilbur S. Felt
Pang-Yen Feng
John L. Figley
Charles F. Fossey
Elsie Mae Gantz Cowan
Roger K. Garver
Robert Stephen Gilmer
Roy Goodell
Lura Jaunita Goodier
Geraldine W. Gosch
W. Everett Green
Eula Gregory Ketterman
John Raymond Gurner
Ralph M. Haney
Richard Henry Hardesty
Vera Harnden
Leora Isabelle Irvine
Letha Pearl Irvine
Basil L. Johnson
Kinichi Edward Kawamura
Robert R. Lamm
Margaret Marion Lewis Means
Elsie Marriott Simon
Arthur C. Martin
Donald S. Martin
Victor Henry Marvel
Esther Catherine Mawdsley
C. Vernon McCauley
Martha McSpadden Simpson
Evelyn Melberg Cranston
George R. Moody
Myra Elizabeth Mounsey

Mary Adaline Mull Moorman
Audrey Lucile Newlin
George Henry Norton
Wilfred Okerberg
Paul Bennett Oncley
Vivian L. Parish
Morris Peterson
Anna Jo Pierce
James W. Pinks
Blanche Margaret Reed
Stanley G. Reif
Fred T. Riniger
Ida E. Sellers
Lloyd R. Simpson
Clifford A. Smiley
Florence M. Smiley
Ruth Marie Snyder Johnson
Clarence Orville Strohl
Eleanor Stuber Youle
Daniel V. Swartz
Iona Taylor Brittingham
William Clifton Taylor
Florus Thomas Olds
Harold Thomson
Leon Thomson
Z. Lucille Tibbitts Dunn
Samuel S. Tihen
N. Elizabeth Walter Borgelt
Ralph H. Waters
Sidney Alan Watrous
Frances Erle Watson Zenger
Christine Whinery
Orley W. Wilcox
Maurice Williams
Lena Fern Wing
Frances Mary Woodard Zeigler
Will T. Wright
Thelma Wycoff
Paul B. Young
Cecil Edwin Zeigler
Beulah Annabelle Zimmerman

1932

Mary Adams
Martha Geraldine Albritten
Lawrence W. Anderson
Elizabeth Anne Archer
Cleo Irene Armstrong
Dorothy Evelyn Atkins
Mazie Ernestine Barnett Kilmer
Lenna Vee Oakla Bennett
Lydia Juanita Bigler
Eva Jeannette Boger
Walter Elliott Boles
Charles O. Booth
Dorothy Elizabeth Bratton
Garcel Brenn
Doris Eleanor Brown
Marie Burdette
Lura Phyllis Burgess
Margaret May Burr Keller
Joe Bussard
Woodrow Cameron
Nellie B. Cloud Curtis
Blake Cochran
Cecil Raymond Coffey
Mary Margaret Damett
Mary R. Davis
Mildred Dellinger
Amy G. P. Den Chen
Charles B. Dickerman
Melvin Dixon
Margaret Ann Dobson
Paul J. Donaldson
Darrel A. Dunn
Harold R. Elliott
Elizabeth Everly
Mary Fink
Beryl H. Folles
William K. Gibson
Eldred F. Gilbreath
George W. Giles
Bessie Gotting
Helen Hamilton
Mildred Hammer
Edward Richard Haug
Oswald Hauschilde
Harold H. Herrin
Forest Emerson Hilbert
Dean Hilfinger
"Jean" Pei Tao Jen
Ruth Parsons Jenkin
Marian Lucile Jewell
Genevieve C. Johnson
Robert Wilson Kelley
John Franklin King
Paul R. Kitch
Vera L. Koontz
Vivian Kraft
Dorothy V. Krehbiel
"Mary" Mo Lan Kung

Helen Margaret Marvel
Donald Matthews
Truman Mauck
Inez Milliken
Frances Elizabeth Moncrief
William Harry Monroe
George R. Moody
Helen Moore Richardson
Walter N. Murphy
Myrtis Newell
Owena V. Newsom
Roy E. Newland
Gail Nicholson Hammon
Pauline Marcedis Nossaman
Don Pollard Pence
Mary Alice Prather
John Paul Ragsdale
Mary Rainbow
*Dorothy Mildred Reed
Lawrence C. Richardson
Royce Clark Richardson
Harvey Lincoln Ridings
Vernon W. Robertson
Mildred A. Robieson
Naomi Belle Ross
Glenn Ruggles
Truth Sawyer Henderson
Winona Pauline Seavers McAllister
Lee H. Shepard
Howard Sidwell
U. James Smith
Lloyd O. Smith
Rogene Smith Ragsdale
Wilda Marie Smith
Louise Frankfield Wilcox
Merle Matilda Steinberg
Merab Salser Stilts
Lois Virginia Tarbet
Madge M. Taylor
Shou Te Tseng
Lorena Vassar Thomson
Florence Angelyn Voigt
Virginia Marie Wallace
Quinnella Webb
Margaret Louise Weinrich
David S. Welsh
Iona Hudson Wentworth
Neva E. Wilkins
James Donald Winner
Hattie Mae Yehle
Evelyn Marie Yoder

1933

Frances Ambrose
Edna Arnold
Clifford Barnhart
Dorothea Grace Bowling
D. L. Brechner
Everett Brown
Virgil Bruce
Erma Buss
Nadina Carr
Homer Clark
Lois Cloud Brechner
Frances Coe
Lucile Cooper
Lawrence Day
Harold Deever
Ed Dietrick
Carroll Edwards
Evelyn Ellis
Beryl Farris
Mildred Flook
Irene Foosee
W. Clifton Freeman
Ruth Garrison
Edna Garton
Clayton Gerboth
Ruth Gillock
Forrest Goff
Gladys Gosch
Lester C. Griffith
Carl Hagan
John Hagans
John Hamilton
Mary Ruth Harter
Wayne B. Henderson
Helen Henry
Harlan Hess
Elmer Hierholzer
Zona Hoch
Elza Holmes, Jr.
Evelyn Hunter
Stanton James
Pong Cheh Jen
Virginia Jones
Virginia Kenreich Drennan
Charles Kitch
Iver J. Kloster
Clarionelle Lehman
Clifford Little

Charles F. Lynn
Madalene Maher
Arline Marshall
Ruth Marvel
Russell Matthews
Melba Maurer
Frances McGill
Raymond McAllister
Frank Moncrief
Dorothy Neal Gibson
Frances Hammond Newland
Ethel Overman
Olive Pittman
Ernest Radford
Grace Smalley
Thelma Snyder
Lucile Spear Tihen
James O. Spoon
Margaret Stetler
Donald Strother
Virginia Stubbs
Mildred Trierbar
Edith Vinionhaler
Alan Watrous
David Welsh
Esther Wiemeyer
Eugene Wilcox
Harold Wilson
Evelyn Yoder Porter

1934

Elizabeth Alford
C. Byard Anderson
Joseph Arnold
Harold Baker
Robert Boley
Flora Broadie
Charles Brown, Jr.
Richard Brown
Frances Coe
Fernando Ira Cook
Don Cooper
Loren Crawford, Jr.
Harvey Crouch
Lawrence Cunningham
Henry Hwei Den
Kenneth Dusenbury
Lorraine Edwards
Delbert Ester
Helen Force
Earl Foulk
Clara Fowler
Edna Garton
Lucille Gilbert
Donald Gieckler
Lyle Glenn
Cecil Gray
Louis Charles Guenther
Robert Hamilton
Thomas Hamilton
Chester Hamm
Lawrence Hickerson
Clay Hildinger
Helen Hull
Thelma Humburg
Archie Jefferies
Hazel Crouch-Jefferies
Ruth Parsons Jenkin
Helen Muriel Johnson
Ruby Marie Johnson
Roger Kirkwood
Margaret Landon
Elizabeth Walker-Livermore
Frances Elizabeth Lynn
Harold Loy
Marietta Martinez
Lois Mawdsley
Joffre Carranza McLaurin
Richard H. McManis
Gerald Miller
Meritt Mesch
Keith Odenweller
Alice Palmer
Maravene Phillips
Lorene Poe
Sylvia Richardson
Esther Ridings
Ralph Riggs
Neva Rounds
Leslie Royer
Pauline Stanley
Merle M. Steinberg
Eugene Strohl
Ralph Stutzman
Marguerite Swanson
Jane Swartz
Lucile Thomas
Jack Vance
Helen Alice Voigt
Paul Warburton
Violet Ward
Allan Woolard

Winfield Subscribers

First National Bank, 900 Main
 Winfield National Bank, 901 Main
 H. L. Barbour, 106 E. Ninth
 Carpenter Photo Shoppe, 814½ Main
 Dr. I. W. Bean, 1007 E. Twelfth
 Dr. K. A. Benson, 103½ E. Ninth
 Dr. N. B. Fall, 905½ Main
 Dr. P. W. Givson, 103½ E. Ninth
 Dr. C. C. Hawke, 306 State Bank Bldg.
 Dr. C. M. McCue, 411 State Bank Bldg.
 Drs. Hilfinger & Martin, 103½ E. Main
 Dr. C. T. Ralls, 413 First National Bldg.
 Drs. Snyder, Jones, Snyder & Snyder, 103½ E. Ninth
 Mrs. H. P. Gott, 600 Manning

Mr. and Mrs. C. B. Hamilton, 302 E. Ninth
 Hickerson Studio, 815½ Main
 Jack Lane Chevrolet Co., 115 W. Eighth
 M. B. Kerr & Co., 112 E. Ninth
 King's Confectionery, 117 E. Ninth
 J. B. Lynn & Son, 721 Main
 Maytag Electric Co., 211 E. Ninth
 College Hill Grocery, 308 College
 Elmer Z. Reeve, 1403 Olive
 Staley Studio, 206 W. Ninth
 Sheneman Meat Market, 917 Main
 Vincent Grocery, 1001 Main
 Winfield Building and Loan Ass'n, 106 E. Ninth
 Winfield Steam Laundry, 612 Main

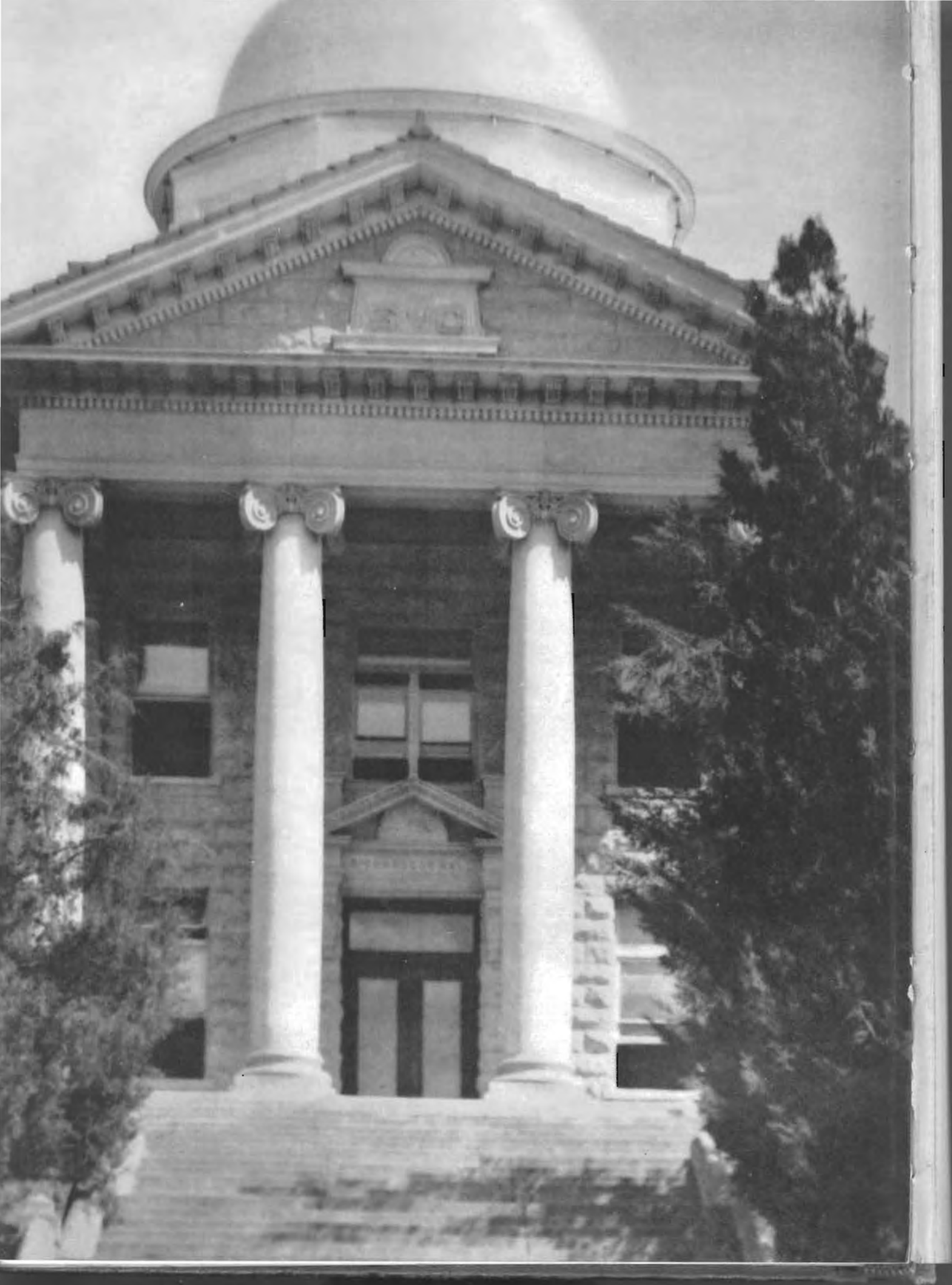
PAGE INDEX

	Page		Page
A Cappella Choir	27	K. K. Pep Club	32
Aims of Southwestern	72	Kappa Omicron	23
Aurora-Laonians	68-70	Leneans	26
Band	29	May Queen	45
Basket Ball	50, 51	Moundbuilder	20
Belles-Athenians	63-67	Orchestra	28
Builderettes	30	Order of the Mound	17
Charter	73	Oxford Fellowship	34
Class of '55	85	Personnel Council	33
Class Officers	86	Pi Epsilon Phi	23
Collegian	21	Pi Sigma Phi	71
Contents	4	Pi Gamma Mu	22
Cosmopolitan Club	34	Pi Kappa Delta	21
Dedication	2	Poetry, Prose	38, 86, 103, 110
English Club	24	Romance Language Club	19
Epworth League	37	Seniors	87-92
Faculty	74-84	Sigma-Delphi	56-62
Freshmen	104-110	Snapshots	39-42
Gamma Omicron	22	Society History	55
Grace Church Choir	36	Sophomores	99, 103
History of Southwestern	5-16	Southwesterners	111-117
Homecoming Queen	44	Subscribers	118
Inter-Society Council	19	Track	52
Intramurals	53	Y. M. C. A.	35, 43
Jinx Janes	31	Y. W. C. A.	35
Juniors	92-98		

WHEN we come to the end and completion of the book, we can look back with pleasant memories and with appreciation for the many fine things done by several individuals in preparing and selling this Golden Jubilee Moundbuilder. To the staff, we wish to extend a hearty "thank you." To Miss Myrta McGinnis, faculty sponsor, who has counseled and assisted in copy and proof reading, we extend our appreciation. To Dean Leroy Allen, Prof. W. J. Poundstone, we are indebted for two features

of this anniversary edition. To the printers and engravers, Fred Bassman of Midland Printing Co., and R. R. Mapleden and M. J. Medlin of Burger-Baird Engraving Co., we can speak only the highest commendations for their co-operation and assistance. To the photographers, Hickerson, Carpenter, and Staley Studios, our enjoyment of their service. To all the students of Southwestern, you have made this book.

MAX WEIR,
 WILBUR CLARK.



Burger
Baird
Engraving Co.

GRAPHIC ARTS
BUILDING
KANSAS CITY



SUSTAINED LEADERSHIP

YEAR IN AND YEAR OUT

IN DESIGNING DISTING

UISHED YEARBOOKS AND

MAKING PERFECT

PRINTING PLATES

[illegible]

Each staff has its problems. In dealing with 460 such staffs, we have learned to advise them wisely and to produce books they are proud to distribute on their campus. 920 editors and business managers endorse our thoroughness and integrity.

When a staff signs a Midland contract, it enlists the aid of a College Printing Department composed of older men of many years' experience, associated with younger men who have the yearbook staffs' viewpoint. The entire book is built under one roof . . . *typography, presswork, binding and cover* . . . the responsibility of one group of craftsmen.

MIDLAND PRINTING CO.
JEFFERSON CITY / MISSOURI