

SEP 17 1936  
D 5111  
DEC 17  
The "SUNRISE COLLEGE"

MOUNDBUILDER

... 1936

41479  
SOUTHWESTERN COLLEGE LIBRARY



SOUTHWESTERN COLLEGE  
WINFIELD - KANSAS

# D E D I C A

TO THE Real Moundbuilders of a real sunrise college, steadily building through strife, service and sacrifice to supremacy, this volume is dedicated by one who rejoices to see her dream "sunrise" a reality far beyond her loving vision.

The words of Dean Fenneben Of long ago, who was himself only a writer's dream, are hers today:

LD5111  
S55  
M6  
1936





# A T I O N

"God keep you on the hilltop; nor once let your feet get into the dark and dangerous ways."

"There is a College Degree for all who have conquered the course of study, and a Master's Degree for every one who was conquered himself."

*Yours in abiding faith,*

MARGARET HILL McCARTER



# FOREWORD

FROM the pen of Margaret Hill McCarter, famous author of the pioneer spirit of Kansas, we take the theme for the "Sunrise College" Moundbuilder for 1936.

Southwestern College of Winfield, Kansas, is the original "Sunrise College" of Lagonda Ledge mentioned in her novel "A Master's Degree." All quotations in this yearbook are taken directly from the novel.

May "Sunrise College" continue in this, her next half-century of history, to bring the sunlit radiance of truth and understanding to the sons and daughters of the prairies.

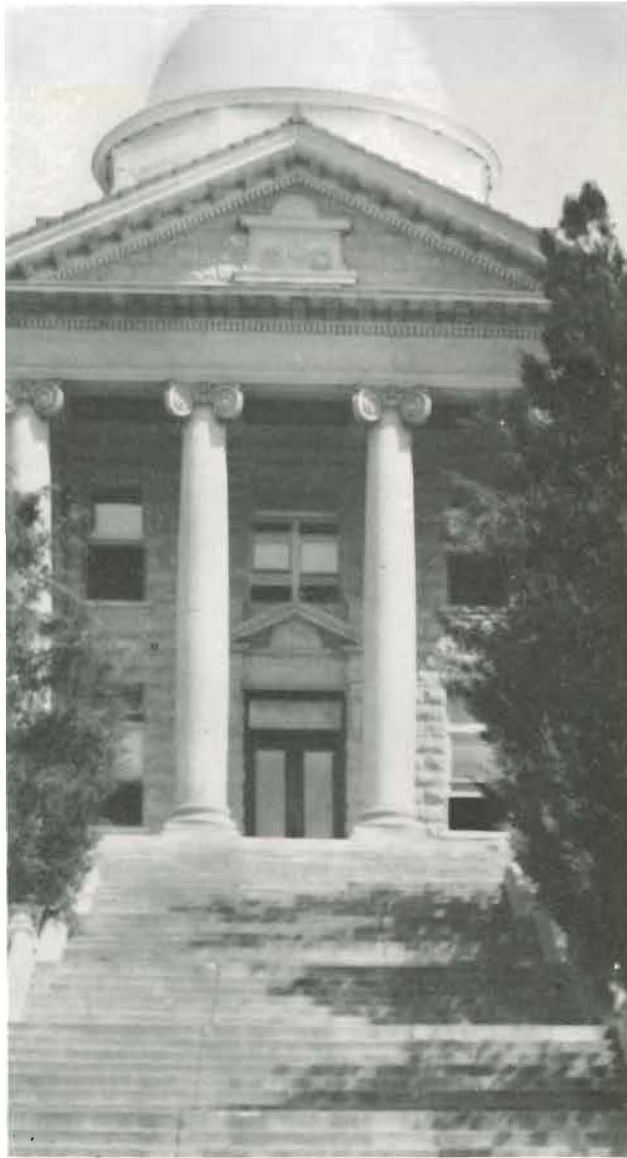
## COPYRIGHT

1936

LOWELL NORMAN MILLER  
*Editor*

WILBUR LUTZ CLARK  
*Business Manager*





## *Richardson Hall*

"Miles away across the valley, the dome of Sunrise College could be seen by day. By night, the studding of electric lights, made a beacon for all the open countryside."

—McCarter

---





*"I can learn from the East how  
to bring the West into its own king-  
dom, and make the dead languages  
serve the better to speak living words  
here" . . . . .*

—McCARTER



MENTAL





PRESIDENT FRANK E. MOSSMAN

A. B., A. M., Morningside College; D. D., Upper Iowa University; LL. D., Southwestern College. Pi Gamma Mu, Pi Kappa Delta. Rotarian, 32nd Degree Mason.

---





# *Liberal Arts*

LEROY ALLEN

*Dean of the College of Liberal Arts, Professor of Bible*

Ph. B., College of Wooster, 1906; Graduate Xenia Theological Seminary, 1914; A. M., University of Chicago, 1920; S. Sc. D., Oklahoma City University, 1930. Founder of Pi Gamma Mu, National Executive Secretary; Editor "Social Science"; Member Institute of Social Sciences and of several foreign societies. 1906-1922, Professor of Economics, Cederville College; 1915-1922, Minister Second United Presbyterian Church, Middleton, Okla.; 1913-1922, Professor of Homiletics and Biblical Theology, Reformed Presbyterian Theological Seminary, Southwestern College, 1922.

PENROSE S. ALBRIGHT

B. S., Rensselaer Polytechnical Institute, 1922; M. S., University of Wisconsin, 1929. 1922-1925, Vice-President of Albright Title and Investment Co., Newkirk, Okla. Southwestern College, 1926.



MRS. H. HUGH ALTVATER

A. B., University of Michigan, 1920. Southwestern College, 1922.



# Faculty

J. THOMPSON BAKER

*Professor of Public Speaking; Coach of Oratory and Debate*

B. L., Berea College, 1901; Ph. B., Mt. Hope College, 1898; Ph. M., Berea College, 1901; Ph. D., Wooster University, 1915. President of State Debate Association; Head of State Oratorical Association, 1905-1906, President, College of the Ozarks; 1906-1908, President, Frank Hughes College; 1909-1921, Minister; Southwestern College, 1922.



MARION T. BIRD

*Associate Professor of Mathematics*

B. S., Illinois Wesleyan University, 1928; A. M., University of Illinois, 1929; Ph. D., University of Illinois, 1934; Phi Beta Kappa, Phi Kappa Phi, Sigma Xi; Pi Mu Epsilon. 1929-1934, Assistant in Mathematics, University of Illinois. Southwestern College, 1934.



WALTER ELLIOTT BOLES

*Assistant Professor of Economics*

A. B., Southwestern College, 1932; M. A., Vanderbilt University, 1933; Graduate study 1933-34, 1934-35. Pi Gamma Mu., Southwestern College, 1935



CHARLES E. BURT

*Professor of Biological Science*

B. S., Kansas State College, 1926; M. S., Kansas State College, 1927; Ph. D., Michigan University, 1930. Phi Kappa Phi; Sigma Xi; Fellow American Association Advancement of Science; American Society Zoologists; Ecological Society of America. 1929-1930, Asst. Curator, American Museum of Natural History. 1930-31, Professor Biology, Trinity University, Texas. 1932-34, Field Expeditions, Smithsonian Institution. Southwestern College, 1931.

# Liberal Arts

LILLIAN CLOUD

*Director of Physical Education for Women*

A. B., Southwestern College, 1921; Certificate of Campcraft, Kellogg School of Physical Education, 1923. Southwestern College, 1923.



DON COOPER

*Instructor in Physical Education and Assistant Coach;  
Director of Intramural Sports*

A. B., Southwestern College, 1934. Southwestern College, 1933.



ROBERT B. DUNLEVY

*Associate Professor of Geology*

B. L., University of Wisconsin, 1893, A. M., University of Wisconsin, 1910; consulting Geologist for Oil Corporations in the United States 1921-1923; in Italy, 1924. Southwestern College, 1895.



EMILY ERICSSON

*Assistant Professor of French and Spanish*

A. B., University of Kansas, 1925; A. M., University of Kansas, 1926; Certificat d'Aptitude a l'Enseignement Supérieure, Alliance Française. One year, Sorbonne, University of Paris. Member American College Quill Club; Pi Beta Phi, Kansas Authors' Club. Southwestern College, 1934.





# Faculty

HELEN F. EVERS

*Instructor in Home Economics*

A. B., Southwestern, 1929; M. S., Kansas State College, 1932. Pi Gamma Mu, Kappa Omicron Phi; Gamma Omicron; Order of the Mound; Phi Kappa Phi; Omicron Mu; A. A. U. W.; P. E. O. Sisterhood. Southwestern College, 1933.



DELBERT EDWARD FICCK

*Instructor of Business Administration*

B. S., University of Illinois, 1933; M. S., University of Illinois, 1934; T. K. E., 2nd Lt. O. R. C. Southwestern College, 1935.



ADA M. HERR

*Associate Professor of Sociology*

A. B., Southwestern College, 1907; A. M., University of Michigan, 1909. Southwestern College, 1918.



CHARLES A. HERRING

*Instructor of English*

A. B., University of Iowa, 1932; M. A., University of Iowa, 1933; Modern Language Association of America; Kansas Association Teachers of English; English Club; Graduate student and teaching Assistant, Stanford University, 1934-1935.



# Liberal Arts

T. REESE MARSH

*Professor of English*

A. B., Johns Hopkins University, 1924; Ph. D., University of Iowa, 1933. Pi Delta Epsilon; Sigma Upsilon; Johns Hopkins Activity Key; American Association of University Professors; Modern Language Association of America. 1925-1929, Instructor, Johns Hopkins University; 1927-1929, Professor of English, Peabody Conservatory of Music; 1932-1933, Study, School of Letters, University of Iowa. Southwestern College, 1929.



MRS. RUTH PRATHER MIDYETTE

*Assistant Instructor of English and Journalism*

B. J. University of Missouri, 1921; B. S., University of Missouri, 1932; M. A., University of Missouri, 1935; Past National President Gamma Alpha Chi; Theta Sigma Phi; Missouri Press Association; Kansas Press Association; Kansas Association Teachers of English; D. A. R.; American Association of University Women.



WILLIAM MONYPENY

*Director and Coach of Athletics*

B. S., Kansas State Teacher's College, Emporia. All-Kansas Guard, 1915; All-Kansas Tackle in 1916, and Captain of All-Kansas team in 1916. 1918, served in U. S. Army, Air Service; 1919-1921, Coach and Teacher, Mangum, Oklahoma; 1921-1925, High School Principal and Coach, Marion, Kansas. Southwestern College, 1925.



LAWRENCE ONCLEY

*Professor of Chemistry*

A. B., De Pauw University, 1907; M. S., University of Chicago, 1913. American Men of Science. 1907-1909, Professor of Chemistry, Wheaton College; 1909-1912, Upper Iowa University; Graduate student of Kansas University, 1924-1925. Southwestern College, 1918.



# Faculty

WILLIAM J. POUNDSTONE

*Registrar; Associate Professor of Education; Alumni Secretary*

A. B., Southwestern College, 1910; A. M., University of Kansas, 1925. Pi Gamma Mu; Order of the Mound; Phi Delta Kappa. 1910-1926, Principal and Superintendent of Kansas Schools. Southwestern College, 1926.



WEBSTER P. REESE

*Professor of Education; Dean of Men*

Graduate, Kansas State Teachers' College of Emporia, 1912; B. S., University of Missouri, 1917, M. S., University of Kansas, 1919; Graduate Study, Columbia University; University of California, 1929-1931. Pi Gamma Mu; Phi Delta Kappa. 1917-1923, Superintendent of City Schools of Kansas. Southwestern College, 1923.



JAMES W. SILVER

*Associate Professor of History*

A. B., University of North Carolina, 1927; M. A., Peabody College, 1929; Ph. D., Vanderbilt University, 1935. Phi Beta Kappa; Southern Historical Association; Mississippi Valley Historical Association. Study Middle Tenn. State Teachers College, Murfreesboro, 1930-1931; Peabody College, 1935; Fellow in History, Vanderbilt, 1933-1935; Shelby County Schools, 1929-1932. Southwestern College, 1935.



REGINA MARIE SPEAR

*Assistant Librarian*

B. S., Kansas State Teachers College of Emporia, 1934; American Library Association; Teacher of History and Librarian at Murphy Collegiate Institute, Sevierville, Tenn., 1934-1935. Southwestern College, 1935.



# Faculty

C. I. VINSONHALER

*Assistant Professor of Latin and English*

A. B., Highland College, 1911; A. M., University of Kansas, 1927. Southwestern College, 1927.



CHALCEA WHITE

*Dean of Women; Assistant Professor of Home Economics*

A. B., Southwestern College, 1921; A. M., Columbia University, 1929; Pi Gamma Mu; Kappa Omicron Phi; Gamma Omicron; P.F.O.; A.A.U.W.; National Treasurer of Kappa Omicron Phi; Regional Council, Y.M. and Y.W.C.A., Southwestern College, 1929.



HARRIET WIRICK

*Librarian*

A. B., University of Wisconsin, 1926; B. S., 1929, A. M., University of Illinois. A.A.U.W.; American Library Association; Teacher, Macystown High School, Illinois, 1926-28; Assistant Librarian and Instructor in Western Illinois State Teachers College, 1929-31; Reference Librarian, Armour Institute of Technology, Chicago, Illinois, 1932-35. Southwestern College, 1935.



WILLIAM T. WARD

*Business Manager*

A. B., Southwestern, 1904; D.D., Southwestern, 1922. 1904-16, Pastor; 1916-20, District Superintendent of Winfield District; 1920-22, Organization Director, Wichita Area; 1922-25, District Superintendent of Winfield District. Southwestern College, 1925.



## Fine Arts Faculty

H. HUGH ALTVATER

*Dean of the School of Fine Arts; Professor of  
Violin; Director of Orchestra and  
String Choir*

A. B., University of Michigan, 1920; Mus. M., Southwestern College, 1925; Mus. M., University School of Music, Ann Arbor, Michigan, 1929; Pupil of G. Remy, Paris Conservatory. Phi Beta Kappa. Southwestern College, 1920.

FRANCES AMBROSE

*Instructor in Piano*

Mus. B., Southwestern College, 1931; Student of Isadore Phillippe and Marcelle Herrenschildt, Fontainebleau, France, 1928; at Conservatoire Americaine; A. B., Southwestern; Piano Study with Henry Loudenback and John Williams, N. Y. Southwestern College, 1929.



HOBART L. BARBOUR

*Instructor in Violoncello*

Cornell College and Southwestern College. Southwestern College, 1926.





# Faculty

CHARLES O. BROWN

*Professor of Instrumental Music; Conductor of Band*

Mus. B., Southwestern College, 1924; Army Bandmaster, New York City. Southwestern College, 1922.



E. MARIE BURDETTE

*Instructor in Piano*

Mus. B., Winfield College of Music, 1922; A. B., Southwestern College, 1931; Normal Training with Mrs. Crosby Adams, 1922, 1924-25, 1928, 1931; Piano with Isadore Phillipe, Madame Dasset, F. Motte-Lacrois, and Organ with Marcel Dupre, Paris, 1927, 1930. Southwestern College, 1925.



EDITH DIELMANN

*Instructor in Expression and Dramatics*

Graduate in Expression, Southwestern College; Northwestern University; Pupil, Mme. Howatt, Chicago Musical College, O.B., 1930; Student of Albert Johnston, 1928; Leland Powers School, Boston; Pupil of George Goffray, London, 1934. Southwestern College, 1926.



FERN DIELMANN

*Instructor in Piano*

Mus. B., Winfield College of Mus., 1926; Pupil of Percy Grainger at Chicago Musical College, 1927-28; Pupil of Archibald Olmstead, Louis Victor Saar, and Barton Bachmann; Piano with Dr. Paul Weingarten and Music Interpretation with Dr. Max Graf, Vienna, Austria, 1930; Studied with Frank Mannheimer of London, Chicago, summer, 1935. Southwestern College, 1926.



# Faculty

HELEN GRAHAM

*Assistant Professor of Expression and Dramatics*

A. B., Southwestern College, 1919; Alberti School of Expression with Madame Alberti, 1921-22; Columbia University, 1927; Northwestern University, 1929-30. Southwestern College, 1922.



IDA CLAWSON HUNT

*Professor of Public School Music*

Mus. B., Baker University, 1921; M A., University of Kansas, 1935, Beethoven Conservatory, St. Louis; University of Oklahoma and Oklahoma City University, 1929; Northwestern University, 1930; Voice Pupil of Marvin D. Geere, Eduardo Sacredote, Edgar Cook, Oscar Seagle, and William Schmidt; Dunning System of Piano with Carrie Munger Long. Southwestern College, 1929.



HENRY H. LOUDENBACK

*Professor of Piano and Theory*

Campbell University, 1902; Pupil of Mr. and Mrs. A. K. Virgil, New York; Allen Spencer, of American Conservatory at Chicago; Madame Annie Bloomfield-Zeisler, Chicago; P. G. Lutkin and Arne Oldber, Northwestern University. 1902-06, Director of Music, Atchison County High School; 1906-10, Director at South Dakota State; 1911-12, Director of Piano, Dakota Wesleyan University; 1913-18, Director, Loudenback School of Music, Atchison, Kansas; 1918-26, Director Christian College Conservatory of Music, Columbia, Missouri. Southwestern College, 1926.



CORA CONN-MOORHEAD

*Professor of Organ and Theory of Music*

Graduate, Findlay College Conservatory, 1900; Graduate of Guilmont Organ School, 1911; Pupil of Marcel Dupre in Musical Analysis and Organ; Mlle. Nadia Boulanger in Harmony, Paris, 1937. Southwestern College, 1924.

# Faculty

ALLAN F. SCHIRMER

*Professor of Voice; Director of A Cappella Choir*

A. B., Dennison University; Mus. B., Northwestern University.  
Southwestern College, 1933.



GRACE SELLERS

*Instructor in Piano*

Mus. B., Southwestern College, 1927; Pupil of Oscar Torsen, H. H.  
Loudenback and Maurice Dumesnil. Southwestern College, 1927.

MERLE STEINBERG

*Instructor in Piano*

Graduate, Winfield School of Music, 1924; Pupil of Charlotte Rose  
and Archibald Olmstead; Mus. B., Southwestern College, 1929; A. B.,  
Southwestern College, 1932; Pupil of Mr. and Mrs. Crosby Adams, Sum-  
mer, 1928-29. Southwestern College, 1926.



ROSS WILLIAMS

*Instructor of Violin*

Mus. B., Southwestern College, 1935.



McNEIL, *Field Secretary*; DETTER, KITZELMAN, PRICE, *Custodians*; HILL, *Registrar's Secretary*; MARVEL, *Secretary to Dean of Fine Arts*; MULVANEY, *Secretary to the President*; REESE, *Teacher Placement*; THOMAS, *Secretary to Field Secretary*; STOUT, *Assistant to Business Manager*; CASBURN, COBB, HILDINGER, OSEN, *Housemothers*.

## Administration Assistants

THANK YOU—

WE HEREWITH wish to acknowledge our appreciation of the fine work Mr. Kitzelman has done to enhance the natural beauty of Sunrise College.

During the past two years the dying and dead trees have been grubbed, new ones planted, grass has been planted around Richardson Hall, a new flight of stone steps laid down the hill to Smith Hall, a new cement walk laid between Richardson and Stewart Gym, a new parking lot established, a new roadbed graded from Richardson to the avenue, overhanging cedars cut away from the 77 steps, and a thousand flowers planted along the pathways.

The tremendous burden of detail that makes a campus beautiful has been shouldered by this man of the out-of-doors. Mr. Kitzelman, we the students of Southwestern thank you.





## SENIOR OFFICERS

### *First Semester*

CARL STOCKING . . . . . *President* . . . . .  
 RAYMOND PAGE . . . . . *Vice-President* . . . . .  
 MAXINE GRESHAM . . . . . *Secretary* . . . . .

### *Second Semester*

CARL STOCKING  
 WENDELL BROADIE  
 HARRIETT KELLEY

STOCKING      BROADIE  
 PAGE      GRESHAM      KELLEY

## Class of 1936

EARLY in September, 1932, the sunrise of a new day dawned in the lives of about two hundred young people as they, for the first time, mounted the "77" to enjoy the activities of "their day" on "Sunset Hill." At first there were many stormy, cloudy moments during which these young people felt the joys of "Sunrise College" to be a myth. Gradually, however, the clouds began to clear, and the students began to send their "rays of interest" into the various fields of activity of college life.

Perhaps the distinguishing contribution of this class has been its work in group reforms. Under the leadership of members of the class of '36, intramural sports have increased in importance; society competition has become less prevalent; the Y. W. C. A. and the Y. M. C. A. have merged into the Student Christian Movement; and all-school parties have appeared on the campus.

However, not only in reforms have members of the class been active. In athletics, oratory, debate, dramatics, music, and even scholarship, the presence of this group has been felt.

And now, "in the golden light of the sunken sun" of our college "day," the members of this class pause for a moment to express their appreciation for the challenges, the opportunities, and the inspiration offered them by the faculty as well as their fellow students. May your "day" be as varied, as colorful, as theirs.

—WILETTA CHUBB.

RUTH ALLEN

Winfield. English; Belles Lettres; English Club, Vice-Pres.; Jinx Janes, Vice-Pres.; Editor of Fledgling; Pi Gamma Mu.



## SENIORS

ERMA AMICK

Marion. English; Sigma Pi Phi; English Club; S. C. M.; Personnel Counselor; Pi Gamma Mu; Honorable Mention, Order of Mound.

ANITA ARMOUR

Bentley. Home Economics; Kappa Omicron Phi; Builderettes; Personnel Counselor; Y. W. C. A. Cabinet; Cosmopolitan Club.



LORENE ASHTON

Ft. Collins, Colo. History; Belles Lettres.

CARL AYERS

Pratt. Business Adm.; Delphi; Pi Sigma Phi; Football; Intramurals.



DARRELL BERRY

Cullison. Biology, Physical Education; Delphi; Pi Sigma Phi, Secretary-Treasurer; Student Council; Y. M. C. A.; Collegian, Asst. Bus. Mgr.; Intramurals.

EARL BOLDT

Belmont. History, Education; Delphi; S. C. M.; English Club; Intramural Basket Ball, Wrestling; Social Science Society; Order of the Mound; Pi Gamma Mu.



WENDELL BROADIE

Kinsley. Geology; Delphi, Pres.; Pi Epsilon Phi; Pi Sigma Phi; Football, Capt.; Student Council; Inter-Society Council; Basket Ball; Tennis; Boxing.

KENNETH BROOKS

Burden. Biology; Delphi; Phi Epsilon Pi; Intramurals.



WAYNE BROOKS

Winfield. Business Administration.

GEORGE BROONER

Winfield. Chemistry, Geology; Athens, Pres.; Intramurals.



EARL H. BRYAN

Cullison. Biology, Physical Education; Pi Sigma Phi; Basket Ball, Co-Captain; Baseball; Football.

## SENIORS

LLOYD PEARL BUCKMAN  
Winfield. English; Belles Let-  
tres; Social Science Society.

ELIZABETH BURDETTE  
Winfield. Home Economics;  
Belles Lettres; Gamma Omicron;  
S. C. M.

GERALD CAYWOOD  
Winfield. Education; History;  
Laconian; Pi Sigma Phi;  
Y. M. C. A.; Football; Basket  
Ball; Wrestling; Intramural  
Coach.

WILBUR CLARK  
Winfield. Chemistry; Delphi;  
Pi Epsilon Phi; Intramurals;  
Personnel Counselor; Junior  
Class Pres.; President Student  
Body and Student Council;  
Moundbuilder, Business Man-  
ager; Campus Leader; Master  
Builder; Delphi Honor Page.

CLARENCE COPLEY  
Hazelton. History; Athens;  
S. C. M.; Social Science Society.

ROYAL CURRY  
Newkirk, Okla. Social Sci-  
ence; Athens, Vice-Pres.; Oxford  
Fellowship, President; S. C. M.;  
Little Theatre Play, Director;  
Oratory, Leneans



IRENE BUTLER  
Pretty Prairie. Business Ad-  
ministration; Aurora; Pi Gamma  
Mu; Pi Kappa Delta; For-  
ensics; Oratory.



JAMES CALVERT  
Winfield. Business; Laconia;  
Phi Epsilon Pi; Intramurals.



WILETTA CHUBB  
Baxter Springs. English; Sig-  
ma Pi Phi; Pi Gamma Mu; Cos-  
mopolitan Club; English Club,  
Pres.; Personnel Counselor; S.  
C. M. Commission; Leneans;  
Y. W. C. A.; Student Council;  
Order of Mound; Master Builder.



MADELINE COCHRUM  
Winfield. Biology; Belles Let-  
tres; Social Science Society;  
Jinx Janes; English Club; Biol-  
ogy Seminar Reporter.



LOUISE CRAIG  
Arkansas City. History;  
Belles Lettres; English Club;  
Pi Gamma Mu.

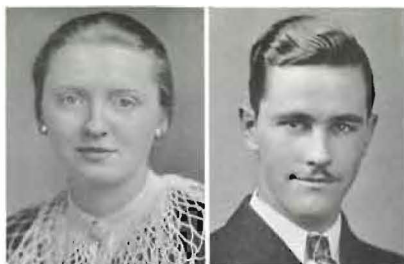


J. WAYNE DAVIS  
Lamar, Colo. Music; Delphi;  
A Cappella Choir; Mixed Quar-  
tette; Male Quartette; Student  
Council; Elijah Chorus.



JEAN DOBSON

Winfield. History; Belles Lettres; Jinx Janes; Personnel Counselor; Orchestra.



HELEN DUNLAP

Winfield. Home Economics; Belles Lettres, Sec.; Gamma Omicron; A Cappella Choir.



DOROTHY N. ELLIOTT

Winfield. Home Economics; Belles Lettres; Kappa Omicron; Gamma Omicron; Student Council, Sec.; Jinx Janes; Personnel Counselor.



HOWARD ELROD

Burden. History, English; Laconia; Editor and Business Manager of Collegian; Intramurals; Junior Class, Sec.; Inter-Society Council; Vice-President of Senior Class.



HAZEL FLOOK

Canton. Home Economics; Aurora, Pres.; Kappa Omicron Phi; K. K. Pep Club, Pres.; Student Council, Sec.; Inter-Society Council; Pi Gamma Mu; Builderette; Personnel Counselor; English Club; Y. W. C. A. Cabinet; Epworth League Cabinet; W. A. A.



HELEN FREEMAN

Wichita. Music, Sociology; Pi Gamma Mu; Cosmopolitan Club; Orchestra; A Cappella Choir; String Choir; Jinx Janes.



## SENIORS

WILBUR DUNKELBERGER

Belmont. History, Education; Y. M. C. A.; S. C. M.; Social Science Society; English Club; Intramurals; First in Boxing-Wrestling.



LUCILLE EARNHART

Winfield. Music; Aurora, Vice-Pres.; English Club; Piano Culture Club; Whistling Soloist with Glee Clubs and A Cappella Choir.



VERA MAE ELLIOTT

Plains. Home Economics; Aurora; Kappa Omicron Phi; Gamma Omicron, A Cappella Choir; S. C. M. Commission; Y. W. C. A. Council; Cosmopolitan Club.



HOWARD FARRAR

Norwich. Music; English; Delphi, Pres.; Band, A Cappella Choir, Student Director; S. C. M.; Mixed Quartette; Orchestra; Cosmopolitan Club; Male Quartette; Personnel Counselor.



KENNETH W. FRANKS

Winfield. Business Adm.; Athens; Pi Gamma Mu; Phi Epsilon Pi; Student Council; Cosmopolitan Club; Lencans; Social Science Society; Personnel Counselor; S. C. M. Co-Chairman; Intramurals.



LEONA DENTON GIBBON

Winfield. Music, English; Belles Lettres; English Club.



## SENIORS

ERNEST GOFORTH

Winfield. Athens; Intramurals.

LUCILLE HAMILTON

Winfield. History.

CLARE J. HAYES

Howard. Bible, Religious Education; Delphi; Oxford Fellowship, Pres.; Band; Orchestra; Y. M. C. A.; Social Science Club.

WARD HENDERSON

Winfield. English; Laconia, Pres.; Campus Players, Pres.; Pi Kappa Delta; Debate; Oratory; Order of Mound.

JAY HOLMAN

Winfield. Biology; Athens, Intramurals; Band; Orchestra; Little Theatre Play.

LENORA JOHNSON

Galva. History; Sigma Pi Phi; Builderette; Social Science Club; W. A. A.; Pres.; S. C. M.



MAXINE GRESHAM

Bucklin. English; Sigma Pi Phi, Pres.; Pi Gamma Mu; Moundbuilder Staff; Y. W. C. A. Cabinet; K. K. Pep Club, Sec.; Collegian Staff; Campus Players, Sec.; Leneans; Student Council, Sec.; Cosmopolitan Club, Vice-Pres.; Inter-Society Council, Sec.; Senior Class, Sec.; English Club; Master Builder; Asst. Editor of Fledgling.

LO RAINE HARVEY  
Montezuma. History.

LEWIE F. HAYES

Greensburg. Business Adm.; Delphi; Epworth League Cabinet; A Cappella Choir; Grace Church Choir.

WILFRED HODGES

Greensburg. Instrumental Music; Delphi; Pi Epsilon Phi; Band; Orchestra; Grace Church Choir, Pres.; Intramurals.

JEAN HOVGARD

Topcka. English; Sigma Pi Phi; Jinx Janes; English Club; A Cappella Choir; P. K. Club; S. C. M.; Junior Class Secretary; Grace Church Choir.

JEAN JOHNSTON

Norwich. Business Adm.; Athens; Pi Epsilon Phi; Rooters Club, Pres.; Student Council; Social Science Club.



DARLEEN JOHNSON

Norwich. History; Belles Lettres, Sec.; Pi Kappa Delta; S. C. M.; Social Science Society; Personnel Counselor; Debate; Y. W. C. A. Cabinet; Pi Gamma Mu.



KENNETH KAUFMAN

Kingman. Physical Education; Delphi, Vice-Pres.; Pi Sigma Phi; English Club; Football; Track; Intramurals; Social Science Society; Y. M. C. A.



LUCILLE KING

Hutchinson. History; Belles Lettres, Pres.; Jinx Janes, Pres.; Social Science Society.



LESTER LATTA

Winfield. Business Adm., Athens, Pres.; Social Science Club; Collegian Staff; Mound-builder Staff; Intramurals; Inter-Society Council; Order of Mound.



BETTY LU LYNN

Winfield. Sociology, English; Belles Lettres; Pi Gamma Mu, Pres.; Jinx Janes; Order of Mound.



MARTHA McMANIS

Winfield. History; Belles Lettres; Jinx Janes, Stunt Capt.



## SENIORS

WAYNE KARLOWSKI

Udall. Bible; Oxford Fellowship.



HARRIETT KELLEY

Winfield. Home Economics; Belles Lettres, Pres.; Kappa Omicron; Phi Leneans, Pres.; Y. W. C. A. Cabinet; Jinx Janes; Student Council; Inter-Society Council; Senior Class Secretary; May Queen; Homecoming Queen; Master Builder.



LUCY LONDON

Bishopville, Md. French; Sigma Pi Phi; Foreign Language Club, Vice-Pres.; English Club; Cosmopolitan Club; Gamma Omicron; Personnel Counselor; Elijah Chorus.



ANN LEVICK

Winfield. History; Sigma Pi Phi, Vice-Pres.; Orchestra; String Quartette; English Club.



VIRGINIA McKNIGHT

Oxford. History; Belles Lettres; Pi Gamma Mu; Personnel Counselor; Builderette; W. A. A.; Drum Major; Jinx Janes; Y. W. C. A. Cabinet; Student Council; Sophomore Class Secretary.



DON. Q. MILLIKEN

Augusta. Biology.





## SENIORS

MAURICE MILLIKEN

Augusta. Education, Delphi.  
Order of Mound; S. C. M.



HOMER MOSSMAN

Winfield. Business Adm.;  
Athens; Pi Sigma Phi, Vice-  
Pres.; Personnel Counselor; In-  
tramurals; Social Science Soci-  
ety; Track.

LOIS E. NILES

Copeland. History; Aurora.  
Social Science Society; S. C. M.



BURNITA ORMES

Winfield. Piano; Sigma Pi  
Phi; Piano Culture Club; S.  
C. M.; A Cappella Choir.

RAYMOND PAGE

Leon. Business Adm.; Athens.  
Pres.; Student Council; Pi Ep-  
silon Phi, Pres.; Leneans, Pres.;  
Junior Class President; Senior  
Class Vice-President; Intra-  
murals; Inter-Society Council;  
Master Builder.



ELEANOR PARKER

Hugoton. Commercial Edu-  
cation; Sigma Pi Phi; Builder-  
ette; S. C. M.; Foreign Language  
Club; Social Science Club; A  
Cappella Choir; Festival Chorus;  
Epworth League Cabinet; W. A.  
A.; Y. W. C. A. Cabinet.

ROBERT PINKS

Winfield. Public School  
Music; Orchestra; String Choir;  
Band.



RITA RICHARDSON

Wilmore. Education; Aurora;  
Builderette; W. A. A.; S. C.  
M.; Gamma Omicron.

LEONARD REIFEL

Paola. Religious Education.



MAXINE REITZ

Belle Plaine. English; Sigma  
Pi Phi; English Club; A Cap-  
pella Choir; Gospel Team; Y.  
W. C. A. Cabinet.

HARRIETT SCOTT

Winfield. Home Economics;  
English; Gamma Omicron, Pres.;  
English Club; W. A. A.; Builder-  
ettes.



LUCILLE SHAVER

Winfield. English, History;  
Belles Lettres; Inter-Society  
Council; Jinx Janes; English  
Club.

## SENIORS

SAVINAH SHOCKEY  
Winfield. Biology, History,  
Pre-Medic; Sigma Pi Phi.

BERNIECE SMITH  
Garden City. Education; Sigma  
Pi Phi; A Cappella Choir;  
English Club; Order of Mound;  
S. C. M.; Social Science Club;  
Pi Gamma Mu.

LEWIS STOELZING  
Wellington. Music; Athens,  
Orchestra; Moundbuilder Staff.

LOIS VIELE  
Caldwell. Public School  
Music; Sigma Pi Phi; A Cap-  
pella Choir; Mixed Quartette;  
Girls Quartette.

JAMES WATTS  
Douglass. Geology, Educa-  
tion; Delphi; A Cappella Choir;  
Phi Epsilon Pi; S. C. M.;  
Social Science Society; Intra-  
mural Wrestling.

WILLIAM WEYMOUTH  
Arkansas City. Chemistry.

E. LOIS SHOOK  
Nickerson. History; Sigma  
Pi Phi; Cosmopolitan Club;  
S. C. M.; English Club; A  
Cappella Choir.

CARL STOCKING  
Winfield. Religious Educa-  
tion; Laconian; Pi Kappa Delta;  
Cosmopolitan Club; S. C. M.;  
Oxford Fellowship; Debate; Ora-  
tory; Senior Class Pres.; Len-  
cans; Master Builder.

JOE URBAN  
Cullison. Education, History;  
Delphi; Pi Sigma Phi, Pres.,  
Junior Class President; Student  
Council; Football Team, Co-  
Captain; Basket Ball; Baseball;  
Track; Tennis; Intramural  
Coach; All-Conference Quarter-  
back and Captain; Boxing; Golf.

MAXINE VIELE  
Caldwell. Home Economics;  
Kappa Omicron Phi, Pres.;  
Gamma Omicron; A Cappella  
Choir; Orchestra; Y. W. C. A.;  
Elijah Chorus; Mixed Quar-  
tette; Pi Gamma Mu.

LOUISE WEBB  
Newkirk, Okla. English; Sig-  
ma Pi Phi, Vice-Pres.; Organ  
Club; S. S. Organist; English  
Club; K. K. Pep Club; Queen  
of W. U. Football Game.

DONNA WHITE  
Tribune. Public School  
Music; Sigma Pi Phi; Jinx  
Janes; English Club; P. K.  
Club; A Cappella Choir; Y. W.  
C. A.; Elijah Chorus; S. C. M.





## SENIORS

### EVERETT WILLIAMS

Winfield. History; Athens; Phi Epsilon Pi; Intramurals; Basket Ball; Tennis; Color Guard; Little Theatre Play

### MARTHA WOODARD

Wichita. History, Public Speaking; Aurora, Regent; Pi Kappa Delta; Pi Gamma Mu; Builderette; S. C. M.; W. A. A.; Debate; Collegian; Gospel Team, Capt.; Romance Language Club, Sec.; Social Science Club, Sec.; Extemp.; L. T. Play.

### JOHN J. YERGLER

Clearwater. Education; Athens; Y. M. C. A.; Football; Basket Ball; Track; Boxing; Wrestling; Baseball; Intramurals.

### CARL ZERGER

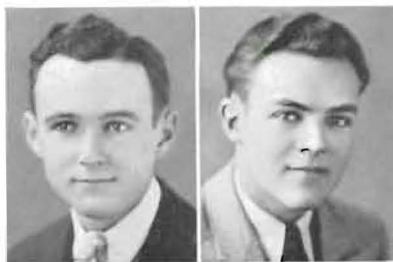
Belmont. History; Pi Gamma Mu; Social Science Society; Intramurals.

### RUTH MARY ZIMMERMAN

Wichita. History; Belles Lettres; Jinx Janes, Sec.; Cosmopolitan Club; Mexican Night School, Chairman; Pi Gamma Mu.

### NEIL ZUMWALT

Drumright, Okla. Music; A Cappella Choir.



### GRAYDON WILSON

Ponca City, Okla. Bible; Athens; S. C. M.; Pi Gamma Mu; Personnel Counselor; Oxford Fellowship; Social Science Society; Gospel Team; Y. M. C. A.; Order of Mound.

### RUFUS WRIGHT

Adair, Okla. Physics, Mathematics; Laconia; Pi Sigma Phi; Football; Intramurals; Order of Mound; Pi Gamma Mu.

### LOUISE YOULE

Winfield. Public School Music; Sigma Pi Phi; String Choir; Orchestra; English Club; Y. W. C. A.

### WALDO ZERGER

Belmont. History; Pi Sigma Phi; Social Science Society; Track; Intramurals; Y. M. C. A.; Baseball.

### VIRGINIA ZIMMERMAN

Wichita. Sociology, English; Sigma Pi Phi; Cosmopolitan Club; S. C. M.; English Club; Oxford Fellowship; Order of Mound.



# JUNIORS

## CLASS OFFICERS

### First Semester

President . . . . . DALE POMEROY  
 Vice-President . . . MERRILL HOLMES  
 Secretary-Treasurer . WINIFRED JONES

### Second Semester

President . . . . . ROBERT THOMPSON  
 Vice-President . . . JOSEPHINE WILMER  
 Secretary-Treasurer . MERRILL HOLMES

PHIL ANTRIM  
 Spivey. Pre-Medic. Delphi.

ELSIE BATY  
 Plains. Home Economics; Aurora; Kappa Omicron Phi; Gamma Omicron; Epworth League Cabinet; Student Council; Personnel Department; Jinx Janes; Secretary, Cosmopolitan Club.

PAUL BRANINE  
 Wichita. Education and History; Delphi; Phi Epsilon Pi; Counselor; Band.

ROBERT O. BROWN  
 Winfield. Music; Athens; Intramural Boxing and Basket Ball; Band; Orchestra.



MILDRED CRANE AYERS  
 Oklahoma City, Okla. Business Administration; Belles Lettres; Jinx Janes; Social Science Society.

ALLENE BENNETT  
 Winfield. Violin; Sigma Pi Phi; A Cappella Choir; Orchestra; English Club; Jinx Janes; String Quartet.

JEAN BRANSON  
 Winfield. Home Economics and Education; Belles Lettres.

NIELS D. BUNCH  
 Winfield. Chemistry; Laconia.

## JUNIORS

### ROBERT R. BURDEN

Burden. Mathematics; Laconia; President, Sophomore Class; Business Manager, Campus Players; Rush Captain, Laconia; Cheer Leader; Band; Orchestra; A Cappella Choir; Phi Epsilon Pi; Program Chairman, Laconia.

### WYATT COOPER

Hutchinson. Public School Music; Delphi; English Club; Band; Orchestra; Assistant Business Manager, 1936 Moundbuilder.

### ROBERT S. DAVIDSON

Mountain View, Mo. Instrumental Music; Laconia, President; Manager, A Cappella Choir; Epworth League Cabinet; Band; Orchestra; English Club.

### MERWIN DEEVER

Maize. Sociology; Delphi; Phi Epsilon Pi; Varsity Basket Ball; Intramural Basket Ball; Student Council; A Cappella Choir; Oxford Fellowship.

### ADDISON DOWNING

Arkansas City. Chemistry.

### FRANK HAROLD EBRIGHT

Independence. English; A Cappella Choir; Grace Church Choir; Gospel Team; Epworth League Cabinet.

### HARRIET ELLIOTT

Plains. English; Sigma Pi Phi; S. C. M.; Y. W. C. A.

### DOROTHY BELLE ENGLISH

Cimarron. Public School Music; Belles Lettres; A Cappella Choir; Grace Church Choir.



### RALPH CALVERT

Winfield. Chemistry and Mathematics.

### CHARLES CURTISS

Beeler. English and Biology; Delphi; President, Cosmopolitan Club; Editor, Collegian; Pi Gamma Mu; Associate Editor, Fledgling; Secretary-Treasurer, English Club; Moundbuilder Staff; Social Science Club; Biology Seminar; S. C. M. Council; Student Council.

### LA VERNE DEAL

Sawyer. Chemistry.

### MAXINE DOTY

Caldwell. Home Economics; Sigma Pi Phi; Gamma Omicron; Kappa Omicron Phi; S. C. M.

### HASKELL DUNCAN

Arkansas City. Pre-Law.

### VICTOR EDGELL

Syracuse. Sociology; Delphi; English Club; A Cappella Choir; Track; Intramural Boxing and Wrestling; Social Science Club.

### ROLAND ELLIOTT

Stafford. English; Delphi; Band; S. S. Orchestra; English Club; Epworth League Cabinet.

### ELIZABETH ESLINGER

Kinsley. Music; Sigma Pi Phi; A Cappella Choir; Y. W. C. A.; Epworth League Cabinet; Elijah Chorus.

RICHARD FARMER  
Pratt. Business; Laconia; Varsity  
Basket Ball; Pi Sigma Phi.

CHARLES FOILES  
Tyro. Chemistry; Physical Sci-  
ence and Mathematics Club; S.  
C. M.; P. K. Club.

A. MAXINE GILMORE  
Bartlesville, Okla. Public Speak-  
ing and English; Belles Lettres;  
Secretary, Pi Kappa Delta; Jinx  
Janes; Honorary Drum Major.

ROLLAND GUNN  
Hutchinson. Instrumental Pub-  
lic School Music.

BOB HARTLEY  
Winfield. History; Athens.

WESLEY HODGES  
Liberal. History; Delphi; Phi  
Epsilon Pi; English Club; Epworth  
League Cabinet; A Cappella Choir.

RICHARD HOLLAND  
Pratt. History; Pi Sigma Phi;  
Y. M. C. A.; Cosmopolitan Club;  
Varsity Football.

M. D. HOLMES  
Hanston. Business Administra-  
tion; Delphi; Secretary, S. C. M.;  
Commissioner; Assistant Business  
Manager, Moundbuilder; Secretary  
and Vice-President, Junior Class;  
Phi Epsilon Pi; Leneans; Intra-  
mural.



## JUNIORS

LESLIE FERGUSON  
Arkansas City. Chemistry.

CLIFFORD FOULK  
Turon. History; Delphi.

CARL GORDON  
Winfield. Chemistry; Debate.

OLIVE HANKS  
Hutchinson. Pedagogical; Social  
Science Society; S. C. M.

RAYMOND HENDERSON  
Harper. Fine Arts; Athens;  
Orchestra; String Quarter; A Cap-  
pella Choir; String Choir; Fine  
Arts Male Quartet.

WAYNE HOLECEK  
Burns. Business Administration;  
Delphi.

WILLIAM HOLIBAUGH  
Winfield; Chemistry and Mathe-  
matics; Laconia; Phi Epsilon Pi;  
Leneans.

STEEVE JOHNSON  
Copeland. Public Speaking and  
Business Administration; Delphi;  
Phi Epsilon Pi; Leneans; Cosmo-  
politan Club; Debate; Intramural  
Wrestling and Boxing; Campus  
Players Plays.



## JUNIORS

DAVID JONES

Ashland. Chemistry; Delphi; Phi Epsilon Pi; Band.

G. MELBOURNE JONES

Arkansas City. History and Government; Delphi; Oxford Fellowship; S. C. M.; Gospel Team.

J. MELVIN KING

Denver, Colorado. Economics.

CHARLOTTE LANDON

Bishopville, Maryland. English; Sigma Pi Phi; English Club; Cosmopolitan Club; A Cappella Choir; Little Theatre Play.

CLYDE LOCKERT

Wichita. History; Varsity Football.

GEORGE MAJOR

Valley Center. Chemistry; Delphi; Physical Science and Mathematics Club.

MARIAN C. MATHEW

Ashland. Home Economics; Sigma Pi Phi; Gamma Omicron; S. C. M.

LLOYD MAXWELL

Douglass. Business Administration; Athens; Intramural Basketball and Boxing.



LEO JONES

Johnson. Public Speaking; Epworth League Cabinet; Y. M. C. A.; Treasurer, Cosmopolitan Club; Social Science Club; Oxford Fellowship; Oratory; Personnel Counselor; Track.

WINIFRED JONES

Winfield. English; Sigma Pi Phi; 1936 Moundbuilder Queen; President, Cosmopolitan Club; Program Chairman, Sigma Pi Phi; Secretary-Treasurer, Junior Class; English Club; Jinx Janes; Student Council; Moundbuilder Staff; Collegian Staff; Inter-Society Council; S. C. M.

WENDELL PRESLEY LAKE

Lake City. Chemistry; Delphi; Treasurer; Intramural Basketball; Physical Science Seminar; Band; Basketball; Track.

FRANCES LENT

Coats. Public School Music; Sigma Pi Phi; Cosmopolitan Club; A Cappella Choir; S. C. M. Cabinet; Piano Culture; E. L. Cabinet; Elijah.

BEN LOWTHER

Winfield. Business Administration; Athens.

GENE MANNY

Winfield. Business; Laconia.

LOREN D. MATTHEWS

Winfield. Instrumental Music; Delphi; Band; Orchestra; A Cappella Choir; Collegian Staff.

DUNBAR S. MCLAURIN

Langston, Okla. Economics and Business Administration; Social Science Club; Cosmopolitan Club; Oratory; Little Theatre Play; Moundbuilder Staff; Band; Orchestra; Social Science Society; P. K. Club.

THEODORE ROOSEVELT MEIER

Hitchcock, Texas. Bible and Religion; Delphi; Y. M. C. A.; S. C. M.; Epworth League Cabinet; Phi Epsilon Pi.

LOWELL MILLER

Peabody. History; Delphi; President, Epworth League; Editor, 1936 Moundbuilder; Campus Players; A Cappella Choir; Pi Kappa Delta; Pi Gamma Mu; Phi Epsilon Pi; Student Council; Personnel Counselor; Vice-President, Freshman Class; Secretary-Treasurer, English Club; Art Editor, Fledgling; Collegian Staff; Orchestra; Little Theatre; Intramurals; Social Science Society.

DOROTHY OLDROYD

Arkansas City. Home Economics; Sigma Pi Phi; S. C. M.

BERNE PARKER

Fairbury, Nebr. Education; Varsity Basket Ball, Football, Baseball; Pi Sigma Phi; Intramural Boxing.

LOVINA PATON

Oxford. English; Jinx Janes.

R. DALE POMEROY

Hugoton. Pre-Law; Laconia, President; President, Junior Class; Phi Epsilon Pi; Male Quartet; A Cappella Choir; Octette; Vice-President, Freshman Class; President, Sophomore Class; Elected Vice-President, Student Body; Festival Chorus; Band; Intramurals; Dramatics.

LEONARD SCHIEFELBINE

Norwich. History; Delphi; Varsity Basket Ball; Pi Sigma Phi; Track.

ELEANOR LEE SHOOK

Great Bend. Pre-Medic; Sigma Pi Phi; Organ Club; Biology Seminar.



## JUNIORS

DORIS MILLER

Peabody. Music; Sigma Pi Phi; Y. W. C. A. Cabinet; A Cappella Choir; Piano Culture Class; Organ Club; Grace Church Choir; Collegian Staff; Orchestra; Festival Chorus.

CLEO MILLIKEN

Augusta. Home Economics; Sigma Pi Phi; Jinx Janes; W. A. A.; S. C. M.; Builderettes.

REBECCA ORTIZ

Winfield. French; Cosmopolitan Club; Romance Language Club.

RUTH PARKS

Winfield.

MILDRED PIKE

Ashland. Business Administration; Aurora; Pi Kappa Delta; Pi Gamma Mu; K. K. Pep Club; Secretary-Treasurer, Freshman Class; Debate; Dramatics; Student Council; Social Science Society.

BILL PORTER

Winfield. Business Administration. Athens; Co-Captain, Basket Ball Team; Vice-President, Student Body.

MARY ELLEN SHAW

Roswell, New Mex. Sociology and English; Aurora; Co-Chairman, S. C. M.; Cosmopolitan Club; English Club; A Cappella Choir; Inter-Society Council; Jinx Janes.

PAULINE SNYDER

Winfield. Voice; Belles Lettres; A Cappella Choir; Y. W. C. A.



## JUNIORS

### VICTOR SPONENBERG

Winfield. Geology and Chemistry; Athens; Secretary-Treasurer, Cosmopolitan Club; Phi Epsilon Pi; Intramural Basket Ball.

### MILTON STOCKING

Winfield. Music; Delphi; Phi Epsilon Pi; A Cappella Choir; Quartette; Orchestra; Band; Grace Church Choir; Intramural Basket Ball and Wrestling.

### LOVELL STUBER

Winfield. Chemistry, Mathematics and Physics; Athens; Phi Epsilon Pi; Intramural Wrestling and Boxing.

### CARL STUTZMAN

Winfield. Business Administration; Laconia; Orchestra; Band.

EDGAR LEONARD TRAUOGT  
Arkansas City. Economics; Varsity Basket Ball.

JOSEPHINE WILMER  
Winfield. Sociology; Belles Lettres; K. K. Pep Club.

MAURINE WOOLARD  
Pawnee Rock. History; Aurora; Gamma Omicron; Social Science Society; First Church Choir.



### RUTH E. STEWART

Pi Nan, Siam. Biology; Vice-President, Cosmopolitan Club; Vice-President, Oxford Fellowship; Secretary-Treasurer, S. C. M.; Gospel Team.

### ESTHER STUBER

Winfield. Home Economics; Belles Lettres; Debate; Jinx Janes.

### LAWRENCE STUDE

Copeland. History and Government; Delphi; S. C. M.; Social Science Club; Debate; Oratory; Pi Kappa Delta.

### ROBERT E. THOMPSON

Medicine Lodge. Physics and Business Administration; Delphi; President, Junior Class; Co-Head, Personal Relations, S. C. M.; Secretary, S. C. M.; Vice-President, Phi Epsilon Pi; Student Council; Counselor Group; Treasurer, Delphi; Treasurer, Y. M. C. A.; Rush Captain, Delphi; Intramurals.

### WENDELL WADE

Winfield. Chemistry; Delphi; Phi Epsilon Pi; Intramurals.

### PAUL DONALD WILSON

Winfield. Business; Laconia; Intramural; Basket Ball.

### GLEE YOUNG

Pretty Prairie. Home Economics; Sigma Pi Phi; Pi Kappa Delta; Kappa Omicron Phi; Gamma Omicron; K. K. Pep Club; Student Council; Personnel Dept.; S. C. M.; English Club; Inter-Society Council.



## SOPHOMORES

GLENN ADAMS, Winfield

LELA ADAMS, Woodward, Okla.

PAULINE BALLINGER, Leon

ROBERT BALTZELL, Hollam, Nebr.

LORENA BARCUS, Idaho Falls, Idaho

EARLENE BASORE, Valley Center

CHARLES BAYNE, Winfield

GERALD BEACH, Winfield

JOYCE BEAN, Anthony

VIRGINIA BENSON, Winfield

JAMES BOCK, Pratt

ALBERT BLOOD, Winfield

MARY BLOWEY, Anthony

GLENN BOBST, Kingman

ROBERT BOJUS, Wilmore

LOIS BRAKEBILL, Englewood

MARGARET BROADIE, Ashland

BETTY BROOKS, Burden

CAROLINE BROOKS, Mulvane

MARY ANN BROWNLEE, Hutchinson

HELEN BUHLER, Pretty Prairie

LAURA BURNETT, Caldwell

HENRY BUSS, Udall

HELEN CALLISON, Norwich

ERNEST CALLISON, Norwich

VERNON CLARK, Winfield

MAUDINE CLIFT, Winfield

DON COE, Wichita

KENTON COLLINSON, Winfield

RUTH COLE, Winfield





## SOPHOMORES

EARLINE COOPER, Liberal

KENNETH COOPER, Winfield

CLAUDE COPLEY, Hazelton

BLANCH COTTOM, Winfield

ROBERTA COURTNEY, Lamont, Okla.

JANE CRAFT, Kinsley

RUTH EILEEN CURRY, Newkirk

FRANCES DAVIS, Winfield

FRANK DAWSON, Julesburg, Colo.

MARIAN DEEVER, Sedgwick

PAULINE DENNIS, Winfield

DOROTHY DIETERICH, Wellington

HAROLD DRYDEN, Brush, Colo.

MARTHA JANE DUCKWORTH, Spivey

MILDRED DYER, Stewartsville, Mo.

JOSEPHINE ELLIOTT, Bluff City

RUBY EWBANK, Pratt

HAZEL FAWCETT, Winfield

ZOLA FLOYD, Argonia

NEITA LU FOILES, Tyro

KEITH FRANKS, Winfield

ROBERT FRIEND, Rolla

ALEEN GILLESPIE, Augusta

FRANCES GRABER, Pretty Prairie

STANLEY GRAHAM, Winfield

FAY GREENE, Winfield

FRANCES ANN GUY, Winfield

CHARLES HADLEY, Winfield

MARGARET HALL, Newton

EVELYN HAMMER, Cambridge



## SOPHOMORES

WILLIAM HARLAN, Winfield

LLOYD HARP, Alden

JUNE HAYS, Pratt

RAY HENRY, Kiowa

WALLACE HILFINGER, Winfield

EDGAR HINSHAW, Winfield

IDA HINSHAW, Winfield

ERNESTINE HODGE, Hutchinson

PAULINE HUSTED, Kinsley

DORIS JACQUES, Ensign

EVELYN JOHNSON, Galva, Okla. \*

BERT KELLER, Valley Stream, N. Y.

PATRICIA KELLEY, Winfield

MARLYS KING, Haviland

MITCHELL KINGSLEY, Rock

LEE KLIEWER, Winfield

CHARLOTTE LONDON, Bishopville, Md.

LELA LIPPOLDT, Kinsley

ELNA MATHES, Conway Springs

MEREDITH MAYSE, Ashland

FLORENCE MCINTYRE, Arkansas City

ALFRED MILLER, Copeland

KONRAD MODSCHIEDLER, Winfield

MARGUERITE MOLZ, Hardtner

HARRY MORGAN, Richfield

ALTA MAE MORTON, Winfield

IRIS MULVANEY, Wellington

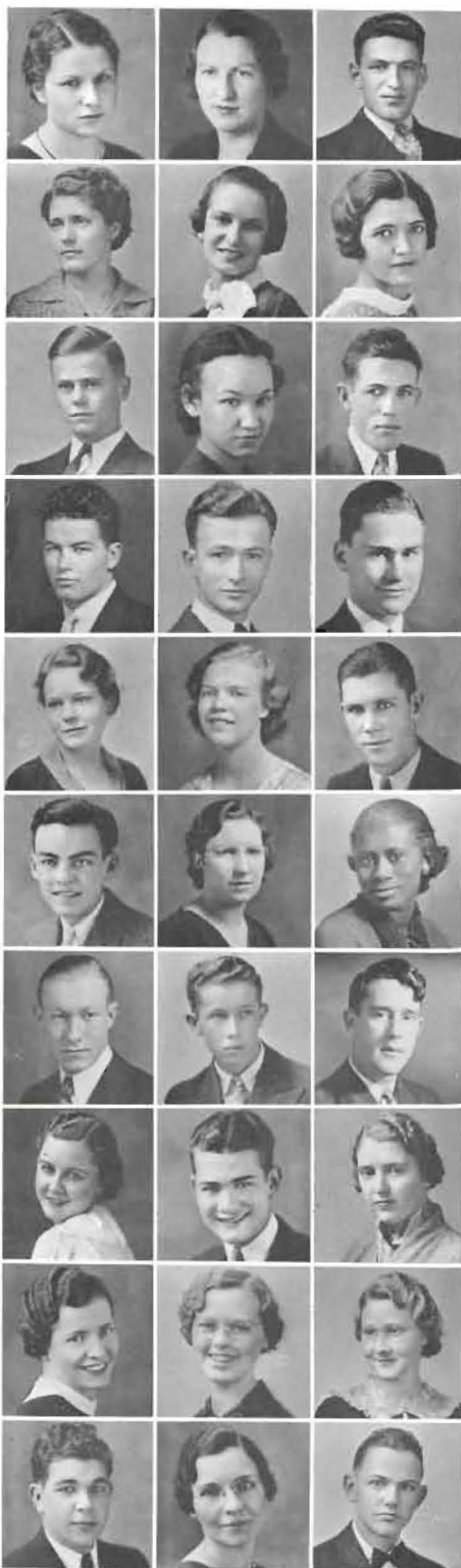
DORRHA NEIER, Mullinville

ELIZABETH NEVENS, Winfield

EDYTH NEWLAND, Winfield







## SOPHOMORES

AGNES NURSE, Medicine Lodge

FREDA NURSE, Medicine Lodge

FRANK POLITZER, Valley Stream, N. Y.

PAULINE PONATH, Mulvane

LOUISE PORTH, Winfield

GLADYS POST, Winfield

WILLIAM RAMSDALE, Centerview

MAXINE REITZ, Belle Plain

CLYDE RENFROW, Beaver, Okla.

VIRGIL RHOADES, Ashland

WILBER RITTER, Hugoton

GEORGE ROBINSON, Winfield

ALENE ROGERS, Lake City

JANE ROTH, Bartlesville, Okla.

WILLIS RUTTER, Geuda Springs

JACK SAVAGE, Winfield

GRACE SELLE, Preston

INEZ SMITH, Coyle, Okla.

PAUL STITT, Liberal

WILLIAM STORY, Winfield

WILLIS STRALEY, Hutchinson

IRMA TALBOT, Haven

LOUIS TAYLOR, Okemah, Okla.

MARJORIE THOMPSON, Winfield

MATTIE GRACE TRUMBULL, Dodge City

LALA TULL, Conway Springs

BELLE VANNATTA, Boise City, Okla.

ELMO VAN VALKENBURG, Danville

TEMPLE VOLLMERT, Winfield

ORAN WADSACK, Rock

## SOPHOMORES

MARION WAINSCOTT, Winfield

HAZEL RUTH WARD, Moscow

EDWARD ELROY WARNER, Winfield

KATHERINE ELLA WHITE, Oil Hill

INEZ WILSON, Anness

DOROTHY WILSON, Winfield

MILDRED WILSON, Great Bend

WILLIS WISEHART, Ashland

ELNORA WOODWARD, Garden City

EMAVEE WRIGHT, Howard

WILLIAM V. WRIGHT, Zenda

RUSSEL YORK, Ashland

ROSA LEE ZIMMERMAN, Dalton

JOHN VOIGT, Winfield

DALE DALBOM, Viola

DON GOFFORTH, Winfield

MARTHA HILDINGER, Winfield

RUTH GILBERT, Winfield

LEONARD COWAN, Beaver, Okla.

REBA TWYMAN, Zenda



True beauty, though it passes, does not die;  
 A lovely song still lingers, glorified,  
 Although its melody has said goodbye,  
 In memory divinely rhapsodized.  
 All nosegays of pink roses from a friend,  
 Though faded and decayed, still sweetly bloom  
 Within an unknown garden, whence they send  
 An endless breath of exquisite perfume.  
 When love has lived and had its little day  
 And must with all its happiness depart,  
 Its lovely dream comes back, with me to stay  
 And haunt my tired, careworn, aching heart.  
 All beauty, after its brief earthly stroll,  
 Lives on eternally, within the soul.

—LORENA BARCUS.



## FRESHMEN

MRS. SIBYL ADAMS, Winfield

MILDRED ALLEN, Manchester, Okla.

VIRGINIA ANN ALLEN, Pittsburgh, Pa.

DELMER ANDERSON, Kingman

THOMAS AUNER, Khandwa, India

MARTHA AVERY, Ashland

ORLEN BALLINGER, Bluff City

MARIAN BASORE, Valley Center

HELEN BARBER, Scott City

ALFRED BARNES, Grenola

RUTH BATY, Plains

DELMAR BERRY, Cullison

GENEVA BLAND, Argonia

MRS. VERA BLOOD, Winfield

PAUL BOLES, Wilmore

JAMES BRANDON, Wichita

RAYMOND BROADIE, Ashland

WENDELL BROWN, Wilmore

WINIFRED BROWN, Wilmore

NITA BURDEN, Burden

ELAINE BUSLEY, Dodge City

HAZEL BYER, Stafford

BETTY CAFFEY, Bentley

WILBUR CALVIN, Winfield

BONITA CAMPBELL, Winfield

LOIS CARSON, Winfield

VELMA CARTTAR, Fowler

JEANNE CASTEEN, Meade

JOHN CLARK, Moline

MILDRED CLIFT, Winfield



## FRESHMEN

ANNAMARY COLLETT, Wellington

BETTY CONKLIN, Mulvane

HELEN COOK, Stafford

LYNN B. COOK, Dighton

JAMES COOPER, Winfield

ALLEN COPELAND, Argonia

FRANK COUNTRYMAN, Kinsley

CHARLES DAILY, Ashland

RUTH DAVIS, Stafford

VIRGINIA DONOHO, Dodge City

JACK DAUGHERTY, Garden City

PERRY DILWORTH, Winfield

VEONA DIXON, Grenola

DOROTHY DRESSLER, Lorraine

DOROTHY DUNN, Wichita

LORENE DURR, Dighton

MARGARET DYKES, Copeland

HOWARD ECKEL, Leon

GRACE ECKELBERGER, Winfield

MARGARET ELLIS, Wichita

ELIZABETH ESTES, Milton

INEZ FISHER, Wichita

THELMA FLOWERS, Cimarron

ALBERT FLOYD, Argonia

JACKSON FOOTE, Liberal

GERALDINE GEE, Kinsley

KETH GERSINER, Hardtner

WILLIAM YOUNG, Protection

LLOYD TUCKER, Winfield

JULIAN ZIMMERMAN, Wichita





## FRESHMEN

ILABELLE GILLOCK, Arkansas City

MILDRED GLASS, Guthrie, Okla.

STEVE GOMEZ, Sharon

EUGENE GRAHAM, Winfield

CHARLES GREEN, Winfield

KATHRYN GREEN, Pratt

ORVILLE GREEN, O'Neill, Nebr.

JAMES GREEVER, Winfield

BARBARA GROSSMAN, Cullison

LUCILE GROVES, Medicine Lodge

MARY ELLA GROVES, St. John

HARRIETT HALL, Newton

NATHAN HAYSE, Greensburg

THAINE HEISER, Anthony

GRACE HEITMEYER, Oxford

EDITH HENDERSON, Udall

LCRAINE HENDRICKS, Dodge City

DONALD HESS, Johnson

ADALYNE HILDERBRAN, Winfield

DANIEL HINK, Englewood

DORSEY HODGES, Greensburg

WAYNE HOLCOMB, Zenda

ESTHER HUBBARD, Wilmore

RUTH HUGGINS, Udall

ALYS HULL, Clearwater

VIRGINIA HUTSELL, Burns

LAWRENCE JARVIS, Winfield

LOIS JOHNSON, Copeland

LEONARD JOHNSTON, Dighton

C. WALTER JONES, Lewis

## FRESHMEN

NEVA JUNE, Udall

CLAYTON KANTZ, Wichita

ROBERT KAUFMAN, Douglass

CHARLES KEATING, Liberal

ELSIE KEIMIG, Zenda

GLADYS KITTLESON, Winfield

ORPHA KLIEWER, Winfield

MERLE KNEPPER, Winfield

WINIFRED KNOWLTON, Oxford

JENNIE KRAUSE, Kismet

OPAL KRAUSE, Plains

J. D. KRELL, Oxford

GEORGE LAWRENCE, Winfield

HARLAN LENANDER, Lindsborg

MARIAN LIPPOLDT, Kinsley

ELIZABETH LITTLE, Conway Springs

FRANK LITTLE, Richfield

INA LOPER, Mulvane

JOHN LOWREY, Argonia

SAMUEL MARTIN, Kinsley

LLOYD MATTHEW, Ashland

COLIA MCGREGOR, Wichita

MAURICE MCGUIRE, Sharon

JANE MCKILLIP, Kinsley

JOHN MCKNAB, Winfield

PAUL MCKNAB, Winfield

MARTHA McWILLIAMS, Dighton

RUTH MCINTOSH, Altoona

JUNE MENZIE, Oxford

CARL METTLING, Lewis







## FRESHMEN

MILDRED METTLING, Lewis

GENEVIEVE MICHAEL, Anthony

IONE MILLER, Baldwin

SARAH MILLER, Montezuma

DONALD MOORE, Belmont

VIRGINIA MOORE, Mt. Hope

SYLVIA MORGAN, Richfield

WILLIS MUSICK, Canton

CLARENCE NICHOLS, Protection

EDITH NILES, Copeland

DICK NORTON, Johnson

ORLAN NORTON, Johnson

THELMA NURSE, Medicine Lodge

ELVA LEE ODLE, Ensign

BEATRICE PARKER, Little River

MARJORIE PARSONS, Winfield

PEARL PARTRIDGE, Macksville

WARREN PFALSER, Kingman

JAMES PHILLIPPI, Argonia

HOWARD PIPKIN, Kingman

HELEN PORTER, Anness

MARY C. POUNDSTONE, Winfield

FLOYD PRIEST, Winfield

WAYNE PRIEST, Winfield

LOUISE RALSTON, Udall

CLIFFORD REED, Cullison

LEAH RENNER, Isabel

ANSEL RESLER, Cedar Vale

RUTH RINEHART, Kismet

LUCILLE ROBBINS, Larned

## FRESHMEN

ALTA ROGERS, Haven

LOLA MAY RUMSEY, Winfield

FLORENCE SCHMIDT, Ford

AL SCHWINT, Byers

DONALD SHANNON, Fellsburg

RUBIE SHELDON, Manter

DWIGHT SHULL, Amy

MILLA MAE SIMPSON, Winfield

J. GORDON SMITH, Kinsley

HUGH SNYDER, Haviland

ROBERT SPEAS, Sterling

GENE SPEIRS, Spokane, Wash.

LEROY SPIZZI, Kinsley

ELNORA STALEY, Winfield

OWEN STANLEY, Haviland

ARTHUR STAMFACHER, Haviland

GLADYS STITT, Liberal

MARY E. STORY, Pawhuska, Okla.

HERMAN STUDE, Garfield

RUTH TEMPLIN, Newkirk, Okla.

MARGARET THOMAS, Argonia

GAYLE THOMPSON, Winfield

LYNN TORRANCE, Norwich

EULA VAN Natta, Ponca City, Okla.

LLOYD VINCENT, Englewood

BETTY VINSONHALER, Winfield

HELEN WAGNER, Kingman

GEORGE WALKER, Englewood

LYLE WALKER, Englewood

MARLIN WALLACE, Bison





## FRESHMEN and SECOND SEMESTER STUDENTS

MARGARET SILVER, Winfield, Sophomore

FRANCIS WARBURTON, Winfield

LUD WASHINGTON, Hoisington

DOROTELA WAUGH, Coldwater

ALLEN WEBB, Clearwater

LOUISE WENIGER, Cleveland

ROBERT WHITESIDE, Clearwater

CARL WILBER, Winfield

LYLE WILSON, Wichita

DON WISE, Clearwater

CHALMER WOODARD, Wichita

PHILO WOODDELL, Winfield

WILFRED WORTMAN, Harper

ADAH IRENE WRIGHT, Genola

HELEN WRIGHT, Adair, Oklahoma

LOIS MAY WRIGHT, Zenda

HAZEL WYCOFF, Winfield

DORIS YORK, Ashland

ROBERT YOLLE, Winfield

HAROLD BRATCHES, Arkansas City

WILLIAM COULSON, Arkansas City

KENNETH DINNY, Preston

GEORGE HAWKINS, Dexter

ROY KRAUSE, Plains

JOE LAIRD, Ponca City, Okla.

J. A. McDONALD, Wellington

RODRIK MOORE, Sedgwick

ELIZABETH MORRISON, St. John

DURIS PALMER, Winfield

DONALD SHANNON, Fellsburg

HERSCHEL SWANSON, Byers

JAMES SHACKELFORD, Winfield

LLOYD TUCKER, Winfield





LA VERNA SPONENBERG



MAURINE WOOLARD

## IN MEMORIAM



La Verna Sponenberg was always vivacious, scholarly, and socially minded in her approach to the problems of life. Spiritually minded, mentally alert and always at work, she presented a magnanimous figure upon the campus.



Maurine Woolard, stately in appearance, queenly in bearing, was much loved by her classmates. Her devotedly Christian personality was always dependable in every great issue of life, never disappointing her friends.

FRANK E. MOSSMAN



Second Prize  
Poem  
English Club  
Contest

By DORIS JACQUES

Our hearts as ancient vessels are;  
They sail the trackless main,  
With never a compass nor guiding star  
To guide them safe past reef and bar  
And bring them home again.

Each heart wears its armour, bright and new,  
The glittering shield of pride;  
And though the light of love shines through,  
Each seeing it, fears it cannot be true,  
And bitterly turns aside.

And the idle wind and the undertow  
Still cast them more apart;  
But when the wildest wind shall blow,  
May it tear the armour away and throw  
Heart against shipwrecked heart!





## *North Hall*

"Firm set as the limestone of its foundations  
—a college that should live, for the builder,  
himself, had learned the secret of living."

—McCarter





*"Whether I win honor or am forgotten, this shall be my life work—on these Kansas prairies to till soil that shall grow men and women" . . . . .*

—McCARTER

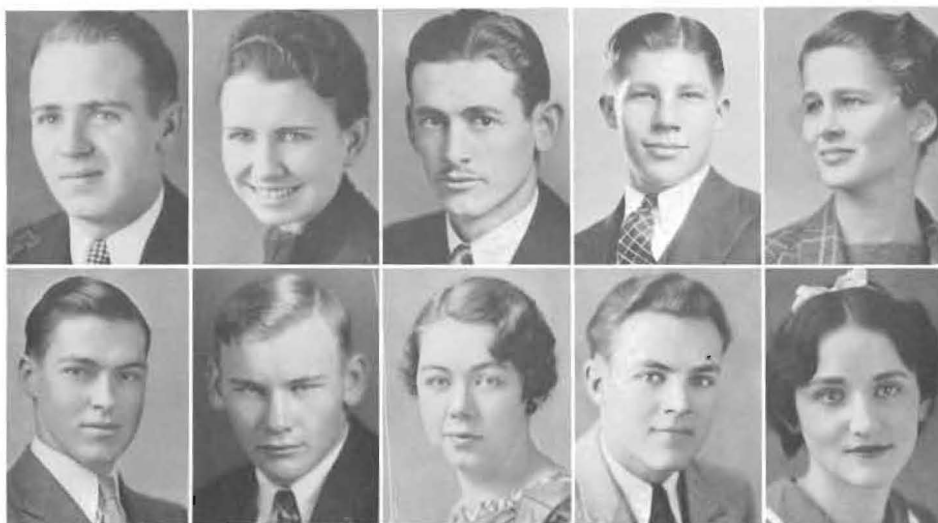


CULTURAL

Left to right—

BOLDT  
CHUBB  
HENDERSON  
LATTA  
LYNN

MILLIKEN  
WRIGHT  
SMITH  
WILSON  
ZIMMERMAN



## *Order of the Mound*

THE Order of the Mound was established in 1917 for the purpose of giving special recognition to members of the senior class with high scholastic ratings. For several years any senior who had made an average of "B" in his college work up to the beginning of his last semester was elected to membership providing his final record would show a total of at least seventy-five hours of work completed in Southwestern.

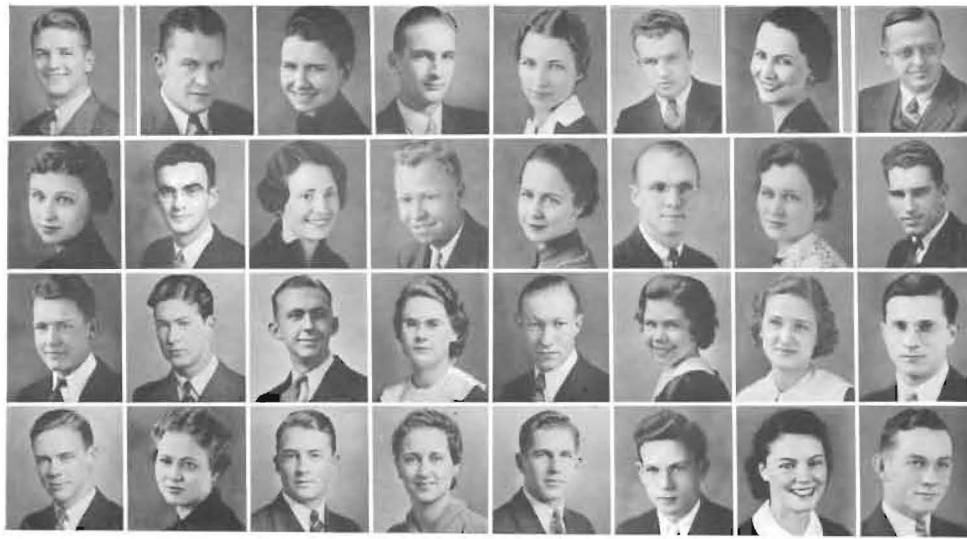
This practice was modified in 1932 when it was decided that not more than twelve per cent of the highest ranking seniors could be elected to the Order. This year a further modification has been made, the required number of semester hours of work completed in Southwestern having been changed from seventy-five to sixty. The latter change has been made to give junior college graduates who transfer to Southwestern a chance to win the coveted honor.

Any student whose scholastic record is sufficiently high but who has not taken the required number of hours at Southwestern is given honorable mention.

This year, six men and four women have been elected by the faculty to membership in the organization. One woman has been given honorable mention. The Order of the Mound key, which is similar to the Phi Beta Kappa key, will be presented to each new member at the final chapel of the year.

Erma Amick of Marion, who transferred to Southwestern at the middle of her junior year, received honorable mention.





CLARK  
W. BROADIE  
CHUBB  
PAGE  
ELLIOTT  
FRANKS  
FLOOK  
ALBRIGHT  
GRESHAM  
MILLER  
YOUNG  
DEEVER  
BATY  
CURTISS  
JONES  
PORTER  
THOMPSON  
POMEROY  
HARP  
MOLZ  
STITT  
MCINTIRE  
DIETERICH  
KELLER  
RESLER  
GILLOCK  
AUNER  
RINEHART  
SPEIRS  
FRANKS  
MOORE  
R. BROADIE

## Student Council

THE Student Council is the most prominent organization on the campus. The purpose of the Council is to provide a representative group to take the initiative in student enterprises, to develop co-operation and co-ordination between the students and the administration, to promote constructive school spirit, and to share with the faculty in the control of student organizations.

Some of the many duties and responsibilities of the council are to direct student assemblies, all-school functions, pep rallies, student elections, arrangement for two holidays per year, and the awarding of emblems and scholarships in activities.

This year the Council redistributed the student activity fund, insured the publication of the Moundbuilder by additions to the activity ticket, and established a more efficient rush-week program for the literary societies.

A successful year of efficient administration over a democratic student government has characterized the work of Mr. Wilbur Clark, President of the Student Body and Student Council.

### *First Semester*

WILBUR CLARK, *President*  
BILL PORTER, *Vice-President*  
RAYMOND PAGE, *Finance Chairman*  
DOROTHY ELLIOTT, *Social Chairman*  
ELSIE BATY, *Chapel Chairman*  
DOROTHY ELLIOTT, *Secretary*

### *Second Semester*

WILBUR CLARK, *President*  
BILL PORTER, *Vice-President*  
RAYMOND PAGE, *Finance Chairman*  
GLEE YOUNG, *Social Chairman*  
ELSIE BATY, *Chapel Chairman*  
HAZEL FLOOK, *Secretary*



Top row—BUHLER, R. ALLEN, BAKER, BOLES, CHUBB, CLOUD, L. ALLEN, EVERS, FLOOK  
 Second row—FRANKS, FREEMAN, GRESHAM, HERR, LYNN, MCKNIGHT, MOSSMAN, POUNDSTONE, REESE  
 Third row—VINSONHALER, WHITE, WOODARD, AMICK, BOLDT, CRAIG, CURTISS, EDGELL, JONES  
 Fourth row—JOHNSTON, MILLER, PIKE, SILVER, SMITH, VIELE, WILSON, WRIGHT, ZERGER, ZIMMERMAN

## Pi Gamma Mu

PI GAMMA MU, National Social Science Honor Society, was founded in 1924 by Dr. Leroy Allen, Dean of Southwestern College. The Southwestern College chapter, known as Kansas Alpha, was the first chapter organized. Since 1924, the organization has grown until it now has about one hundred fifty chapters in colleges and universities in the United States and its territories.

The purpose of Pi Gamma Mu is the inculcation of the ideals of scholarship, scientific attitude, and method and social service in the study of all social problems. It aims to instill in the mind of the individual a scientific attitude toward all social questions.



DR. LEROY ALLEN  
 National Founder

Membership in Pi Gamma Mu is limited to juniors, seniors, graduate students, alumni, and instructors, men and women who have attained to a high degree of scholarship and have distinguished themselves in the study of social science. Requirements for membership in the local chapter are twenty hours of social science with average grade of "B."



LOWELL MILLER, *Editor*

## The Mound- builder



WILBUR CLARK, *Business Manager*

THE Moundbuilder is the yearbook published by the student body of Southwestern College. The editor and business manager are chosen by a publications committee composed of faculty members and students, according to their ability and previous apprenticeship as staff workers.

Members of the staff are chosen by the editor and business manager with the approval of the publications committee. The staff editor and assistant business manager showing the most satisfactory record at the end of the year are chosen for the chief position the following year.

The yearbook is financed by the sale of books, activity fee allotment, and the sale of pages to organizations within the school. The editor and business manager receive a reasonable salary, but the staff of assistants work for no remuneration.



### THE STAFF

HOLMES  
GRESHAM  
JONES  
TRUMBULL  
AUNER  
COOPER

CURTISS  
STORY  
MILLIKEN  
JOHNSTON  
WAINSCOTT  
CALLISON





CHARLES CURTISS, *Editor*

# The Collegian



ED WARNER, *Business Manager*

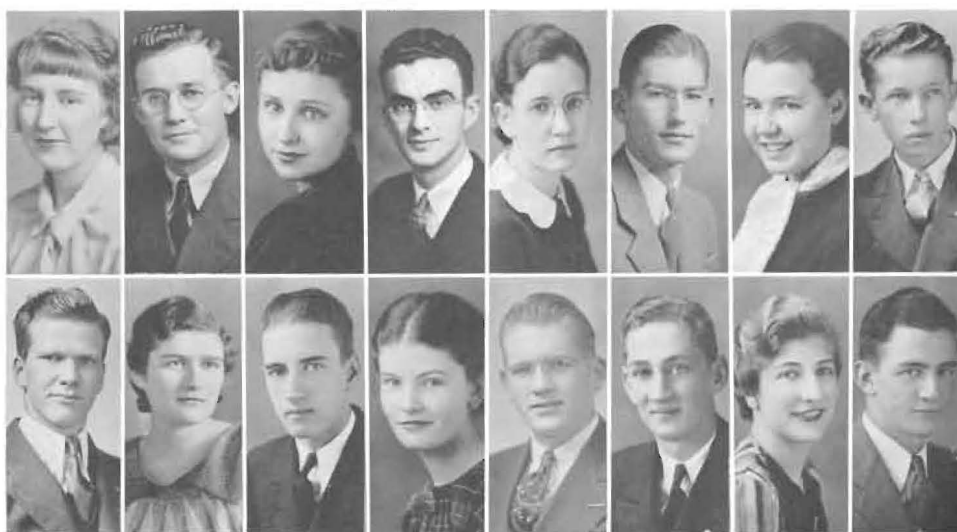
THE Collegian, now in its forty-first year, is the official newspaper of the student body of Southwestern college, by whom it is published. Its editor and business manager are selected by the publications committee, who act as a general supervisory body, allowing the editor and business manager, each of whom selects his own staff, subject to the approval of the committee, extensive freedom of action.

The Collegian is paid for partially from the activity fund, and partially from advertisements. It is published weekly as long as it is possible, though in recent years it has been found necessary to adopt a bi-weekly issue schedule during the early part of the second semester, when there is comparatively little advertising. The printing is done by the Winfield Daily Courier Press.

## THE STAFF

THOMPSON  
STOCKING  
GRIFFIN  
MILLER  
BRACEHILL  
MATTHEWS  
JACQUES  
STORY

COE  
MILLER  
GREEVER  
VAN NATA  
GRAHAM  
GEORGE  
COOK  
JONES





*Top row*—ZUMWALT, HARP, EBRIGHT, DRYDEN, WARBURTON, SPEAS, PETER, HODGES, MILLER, DEEVER, ECKEL, RESLER, E. STOCKING, SPEIRS, BOBST, METTLING, WILSON

*Second row*—REITZ, TEMPLIN, ZIMMERMAN, SMITH, ORMES, HAYSE, DAVIS, VAN VALKENBURG, TORRENCE, NURSE, DYER, ENGLISH, BENNETT, BROWNLEE, HOVGARD

*Third row*—HULL, YOULE, LONDON, SHOOK, MATHES, WHITE, WATTS, M. STOCKING, FARRAR, BURDEN, WILSON, DIETERICH, TRUMBULL, TALBOT

*Fourth row*—BURDEN, NEVENS, DEEVER, CASTEEN, LENT, ESLINGER, SCHIRMER, M. VIELE, L. VIELE, ELLIOTT, MOLZ, ROGERS, SNYDER

## *A Cappella Choir*

Now in its tenth year of existence, the Southwestern A Cappella Choir continues to stand for the ultimate in choral excellence. The choir was organized in 1926 by Harold S. Dyer and has since been under the successive leaderships of Professors Haydn Owens, Dean H. Hugh Altvater, and the present director, Professor Allan F. Schirmer.

Since it was first organized, the choir has made annual tours to such great musical centers as Chicago, Denver, Kansas City, and New York, winning everywhere the highest praises of world famous critics, and being ranked among the leading choral organizations of its kind in the United States. Last year an extensive tour was made into the states of Missouri, Arkansas, and Oklahoma, and this season the choir sang in the major cities throughout the Southwest Kansas Conference.

There is no economy in the excellence of the material used by the choir in its concerts. The music is chiefly religious in nature, compositions being selected from the Latin and Russian liturgies, American Negro spirituals, and works by more modern composers. Howard Farrar is student director and Robert Davidson is business manager.



## *Symphony Orchestra*

THE Southwestern College orchestra, under the leadership of Dean H. Hugh Altvater, adequately demonstrates the fine musicianship being developed in the Southwestern School of Fine Arts.

The orchestra, composed of some fifty well-trained musicians, has gained a reputation in the Southwest which has been advanced very much during the past year.

The repertoire of the orchestra has included some of the major symphonies performed by the leading orchestras of the day, as well as varied works from masters of the orchestral field. In addition to the playing of the symphonies, it has also accompanied piano concertos by Grieg and Schumann.

Aside from its value as an artistic organization, it has afforded students in the fine arts department an excellent laboratory in which to work. Members of the conducting classes have been given opportunities to conduct the orchestra, and those studying instrumentation and orchestration have been allowed to come and sit in the orchestra and observe.

In the annual presentation of the "Elijah" by the Winfield Oratorio Society, the orchestra has played an important part for several years.





AUNER    SPEIRS    CURRY    KELLEY    PAGE    GRESHAM    LITTLE    JOHNSON    NILES

## The Leneans

### RAYMOND PAGE

Follow Thou Me  
He Forgot Not His People  
Paul and Thekla  
Pontius Pilate

### HARRIETT KELLEY

He Forgot Not His People  
Paul and Thekla  
Pontius Pilate

### ROYAL CURRY

Paul and Thekla  
Pontius Pilate

### STEPHEN JOHNSON

Paul and Thekla  
Pontius Pilate

### MAXINE GRESHAM

Paul and Thekla  
Pontius Pilate

### EDITH NILES

Pontius Pilate

### ELIZABETH LITTLE

Pontius Pilate

### THOMAS AUNER

Pontius Pilate

### GENE SPEIRS

Pontius Pilate

THE Leneans have become a permanent organization to further the work of the church by presenting a vital message in dramatic form.

The director of the group is Miss Edith Dielmann, a member of the college faculty who has studied extensively in the field of religious drama in both the United States and Europe.

The Lenean's play this year, "Pontius Pilate," is a dramatic presentation of the life of Pontius Pilate and his household in the crucifixion of Jesus of Nazareth.

### THE CAST

Pontius Pilate	RAYMOND PAGE
Flaccus	GENE SPEIRS
Caius	ROYAL CURRY
Jonathan	STEVE JOHNSON
Juno	HARRIETT KELLEY
Claudia	MAXINE GRESHAM
Mary of Magdala	ELIZABETH LITTLE
Mariam	EDITH NILES
Flavius	THOMAS AUNER
Marcus	GENE SPEIRS
A Beggar	MAXINE GRESHAM
Apostle John	ROYAL CURRY
Marcia	EDITH NILES



HENDERSON  
MILLER

LANCASTER  
BURDEN

GRAHAM

GRESHAM  
KELLER

COLLINSON  
NEVENS

## Campus Players

THE climax of dramatic activity on the Hill is membership in the Campus Players. It is attained only after success in society plays, and a probationary period in the organization itself, during which time staff duties in costuming, financing, and staging determine final acceptance.

Founded in 1919, Campus Players have given difficult and artistic performances each Homecoming and May Day. The current fall production was the Kaufman-Wollcott murder melodrama, "The Dark Tower."

Miss Helen Graham is the director, and Ward Henderson the president.

### THE CAST

Hattie	MILDRED PIKE
Martha Temple	HELEN GRAHAM
Ben Weston	LOWELL MILLER
Damon Wells	KENTON COLLINSON
Daphne Martin	ELIZABETH NEVENS
Jessica Wells	MAXINE GRESHAM
Barry Jones	BERT KELLER
Dr. Kendall	ROBERT BURDEN
Stanley Vance	WARD HENDERSON
MAX SARNOFF	KENTON COLLINSON
PATSY DOWLING	ESTHER STUBER
A Bellboy	ALLEN COPELAND
William Curtis	GEORGE LANCASTER

WARD HENDERSON  
Romeo and Juliet  
The Dark Tower  
Criminal at Large

GEORGE LANCASTER  
Criminal at Large  
Dear Brutus  
Romeo and Juliet  
Mary, Mary, Quite Contrary  
The Dark Tower  
Holiday  
She Stoops to Conquer

MAXINE GRESHAM  
Romeo and Juliet  
The Dark Tower

KENTON COLLINSON  
The Dark Tower  
Dear Brutus  
Mary, Mary, Quite Contrary

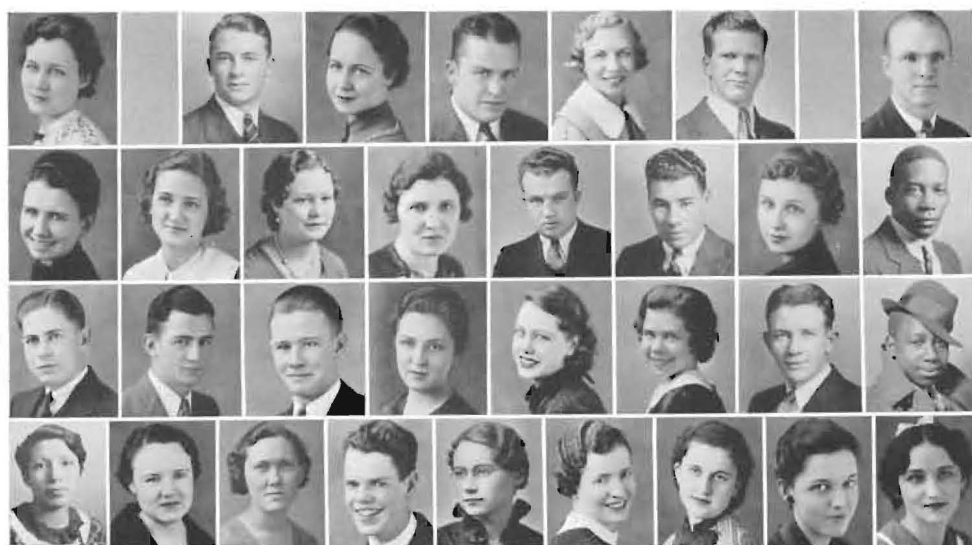
LOWELL MILLER  
Criminal at Large  
Romeo and Juliet  
The Dark Tower

ROBERT BURDEN  
Criminal at Large  
The Dark Tower

BERT KELLER  
Romeo and Juliet  
The Dark Tower

ELIZABETH NEVENS  
Romeo and Juliet  
The Dark Tower

MISS HELEN GRAHAM  
Director



JONES  
AUNER  
BATY  
BROADIE  
COURTNEY  
COE  
CURTISS  
CHUBB  
DIETERICH  
DEEVER  
ERICSSON  
FRANKS  
GOMEZ  
GRESHAM  
HOLLAND  
HARLAN  
JONES  
JOHNSON  
LENT  
LONDON  
MCINTIRE  
MODSCHIEDLER  
MCLAURIN  
ORTIZ  
SHAW  
STITT  
SPONENBERG  
SHELDON  
TRUMBULL  
WARD  
R. ZIMMERMAN  
V. ZIMMERMAN

## Cosmopolitan Club

THE Cosmopolitan Club was organized in 1927 as a local project to provide a more adequate social life for foreign students. Membership is limited to ten times the number of foreign members. Miss Winifred Jones and Mr. Charles Curtiss served as presidents during the current year, under the supervision of Miss Emily Ericsson.

THE Oxford Fellowship was organized for the fulfillment of the spiritual needs of students studying for the ministry, as well as to encourage and help those who were undecided to make a definite choice. This year the club sponsored the college gospel teams. Clare Hayes acted as president.

## Oxford Fellowship

HAYES  
BLOOD  
COUNTRYMAN  
DAWSON  
DEEVER  
HARP  
JONES  
KLIEWER  
LITTLE  
MEIER  
METTLING  
MODSCHIEDLER  
MORGAN  
S. MORGAN  
NURSE  
REIFEL  
RESLER  
STANLEY  
STEWART  
WAGNER  
WAUGH  
WILSON  
WISEHART  
ZIMMERMAN  
MARSH  
ALLEN





KELLEY  
ARMOUR  
BATY  
D. ELLIOTT  
V. ELLIOTT  
EVERS



FLOOK  
VIELE  
YOUNG  
WHITE  
DOTY  
MOLZ  
OLDROYD



## Kappa Omicron Phi

THE Mu chapter of Kappa Omicron Phi, National Honorary Professional Fraternity for Home Economics majors, was organized in 1929. Members are selected on the basis of scholarship, leadership, and character. The national conclave this year was held in Tuscon, Arizona, with five local representatives present. Miss Harriett Kelley is president.

GAMMA Omicron is an honorary local organization for Home Economic majors and minors, organized in 1921. The purpose of Gamma Omicron is to give training in poise and leadership. Members are chosen from the sophomore, junior and senior classes on the basis of scholarship. Anita Armour and Harriet Scott were semester presidents.

## Gamma Omicron



SCOTT  
ARMOUR  
BASORE  
BATY  
BURDETTE  
CHUBB  
DIETERICH  
DOTY  
DUNLAP  
D. ELLIOTT  
V. ELLIOTT  
EVERS  
FAWCETT  
FLOOK  
HUSTED  
KELLEY  
LANDON  
LIPPOLDT  
MATTHEW  
MOLZ  
NEIER  
OLDROYD  
PORTH  
RICHARDSON  
TRUMBULL  
TWMAN  
VANNATTA  
VIELE  
WHITE  
WOOLARD  
YOUNG



*Back row to front*—CLARK, MILLER, DEEVER, WALKER, LAKE, JOHNSON, WILLIAMS, COWAN, KEATING, SPEIRS, POLITZER, BOLES, DEAL, HOLCOMB, NICHOLS, AUNER, BOBST, HOLMES, SCHWINT, STUBER, DRYDEN, WADE, PITKIN, BOLES, BROONER, WRIGHT, JOHNSTON, HOLECEK, HODGES, MEIER, STOCKING, DALBOM, JOHNSTON, RENFROW, FRANKS, COE, SPONENBERG, VAN VALKENBERG, BUSS, HOLLIBAUGH, WATTS, POMEROY, CALVERT, KELLER, MILLER, RESLER.

## *Phi Epsilon Pi*

PHI EPSILON PI, men's pep club, was organized in 1935 by outstanding campus personalities to promote pep at the intercollegiate games. Membership is limited to sixty men, selected on the basis of their personality, friendliness, sportsmanship and scholastic standing. The college cheer leaders and members of Pi Sigma Phi are honorary members.

The purpose of the club is to stir up enthusiasm and excitement at student assemblies and games. At the half-time period of every home basket ball game the club presented various stunts, shows, fights, and comic antics for the amusement of the fans.

Formal initiation for new members consists of a full evening's paddle session at one of the most important games of the year, followed by a big celebration in the field house after the game.

Professor C. O. Brown was faculty sponsor. Raymond Page was president the first semester, James Calvert, the second.



*Top row*—CAMPBELL, SILVER, ZIMMERMAN, ELLIOTT, V. ALLEN, JONES, VAN NATTA, SHOOK, SHAVER, HILDERBRAN, KING  
*Second row*—LIPPOLDT, MILLIKEN, STORY, VANNATTA, MOLZ, POUNDSTONE, MATHES, RUMSEY, CRAFT, GUY, PATON  
*Third row*—PARKER, BENSON, DUCKWORTH, TALBOT, BLOWEY, SCHMIDT, TWYMAN, AYERS, BUHLER, McMANUS, HUTSELL  
*Fourth row*—BROWNLEE, MORTON, LITTLE, COCHRUM, TULL, COURTNEY, KEIMIG, CAFFEY, ELLIS, HUGGINS, STUBER  
*Front row*—E. WRIGHT, MENZIE, ECKELBERGER, MCKNIGHT, HAMMER, NEVENS, L. WRIGHT, ROBBINS, VINSONHALER, GILMORE

## *Jinx Janes*

JINX JANES, true to their aim, have endeavored to further during this second year of organization a better school spirit, more enthusiasm and interest in all sports, and more pep at games. They have at each game presented a stunt, and worked with the band in drills during both the football and basket ball seasons. At special pep assemblies and rallies the Jinx Janes have always helped.

Social activities of the club are confined to the events of rush week, and the formal banquet held in the spring. On November 23, forty rushees were entertained at an informal buffet supper. They were invited to become members, and participate in the club's activities.

Officers are:

	<i>First Semester</i>	<i>Second Semester</i>
<i>President</i>	LUCILLE KING	HELEN FREEMAN
<i>Vice-President</i>	HELEN FREEMAN	RUTH ALLEN
<i>Secretary-Treasurer</i>	RUTH MARY ZIMMERMAN	LUCILLE SHAVER





TRUMBULL  
BROOKS  
COOPER  
EWBANK  
GRABER  
GRESHAM  
FLOOK  
HUSTED  
MCINTIRE  
PIKE  
WEBB  
WILMER  
YOUNG  
BUSLEY  
GREEN  
HEITMEYER  
MOORE  
PARSONS  
RINEHART  
ROGERS  
TEMPLIN

## K K Club

PERSONALITY, energy, character, and general enthusiasm for all S. C. activities personify the true K K'er. The pep club was organized in 1928 by fourteen spirited girls, but in 1934 the membership was increased to twenty-two. A unanimous vote is required to elect new members. Hazel Flook was president first semester and Mattie Grace Trumbull second semester.

THE Builderettes, organized in 1927, is an honorary athletic organization under the auspices of the Women's Athletic Association. Girls who have won 300 or more W. A. A. points are entitled to membership. Miss Lillian Cloud is sponsor, and Pauline Husted, president.

## Builderettes

McKNIGHT  
ARMOUR  
FLOOK  
GROVES  
HUSTED  
HILDINGER  
L. JOHNSON  
E. JOHNSON  
KING  
KNOWLTON  
KLIEWER  
MILLIKEN  
F. NURSE  
T. NURSE  
PARKER  
RICHARDSON  
SCOTT  
WOODARD  
CLOUD



REESE  
 MARSH  
 BRANINE  
 CLARK  
 CURRY  
 FRANKS  
 HARP  
 HOLLAND  
 JONES  
 MILLER  
 MOSSMAN  
 PORTER  
 STOCKING  
 THOMPSON  
 WILSON  
 WHITE  
 CLOUD  
 AMICK  
 ARMOUR  
 BATTY  
 CHUBB  
 DOBSON  
 ELLIOTT  
 EWBANK  
 FLOOK  
 HUSTED  
 JOHNSTON  
 MCINTIRE  
 MCKNIGHT  
 YOUNG



## *Personnel Council*

THE Student Personnel Council of Southwestern College is under the direct supervision of W. P. Reese, dean of men. It was organized in the spring of 1933 and was put into operation in the fall of 1933. The Personnel Council consists of the dean of men, the dean of women, two other faculty members, and twenty-four upperclass students who serve as counselors of specified groups of students, especially of freshmen. Each student counselor has approximately ten students whom he advises, helps, and associates with.

The primary purpose of the organization is the development of well-rounded personalities. Particular attention has been given to such matters as orientation of new students, proper housing of all students, the social and religious life of the college community, educational and vocational guidance, placement service, personnel records, and the student's personal problems.

To the casual observer the work of the department is, perhaps, not apparent, because it must be carried on quietly and unobtrusively. The effects of the endeavors of the council, however, are both subtle and far-reaching.



DAWSON, COOPER, HAYS, BRANDON, HILFINGER, BROWN, STRALEY, W. HODGES, WISE, D. HODGES, VAN VALKENBURG, BURDEN, WORTMAN, STUEZMAN, GROVES, JOHNSON, JONES, NURSE, WOODDELL, COURTNEY, STICKING, TAYLOR, ROGERS, BATY, BASORE, WILSON, HOLMAN, KANTZ, SPEIRS, BRANINE, AUNER, PATON, BROOKS, FARRAR, MATTHEWS, SAVAGE, WILBER, LENANDER, ELLIOTT, MCKNIGHT, BLISS

## *Band*

THE Southwestern College Band, a musical pep organization under the direction of Professor C. O. Brown, was warmly received by students and faculty of every high school and university visited during the year. The Band acted as an ambassador of good will for the Builder athletic teams during a very successful season. On the road or at home the Band carried on with the same spirit that characterized the Jinx.

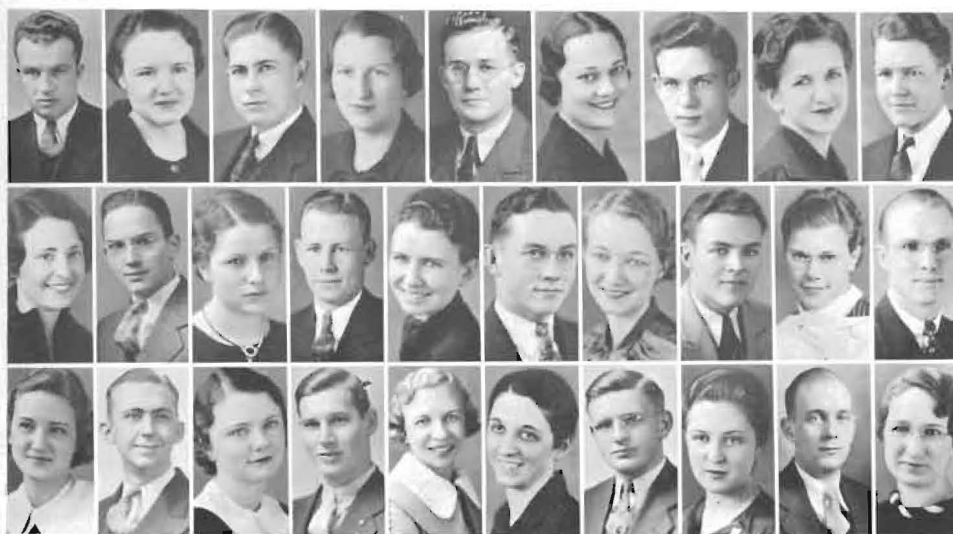
Its lively music bolstered the spirits of the fans during the game played at Emporia in a deluge of rain. By special request the Band played for the high school football game between Harper and Caldwell at Caldwell in November.

Gestures of friendship were made between old rivals this year when the Southwestern Band appeared in concert before the student body of Wichita University in their pep assembly. A matinee performance followed at the Miller Theatre. The concert honored the works of the great composer, Stephen Foster.

The outstanding events of the year were two broadcasts over station KFH in Wichita preceding the important Central Conference basket ball games which decided a championship.



FRANKS  
SHAW  
HARLAN  
F. NURSE  
STICKING  
ELLIOTT  
FRANKS  
WRIGHT  
THOMPSON  
YOUNG  
COUNTRYMAN  
A. NURSE  
HOLMES  
GIBBS  
BRADIE  
ALDRYD  
WILSON  
COOPER  
GURLESS  
DIETRICH  
HARP  
PARKER  
STUDE  
COURTNEY  
JOHNSTON  
DAWSON  
LENT  
MARSH  
WHITE



## *Student Christian Movement*

THE Student Christian Movement is a fellowship of students who, seeking the meaning of life, are captivated by Jesus and his understanding of God and man, and are committed to comprehending and following its implications in personal and social living.

Implicit in this purpose are certain convictions and obligations which have been made the centers of group activity along four different lines: Re-interpretation of Religion, Personal Adjustments and Campus Relations, New Citizenship, and World Co-operation. These commissions, which are open to all students, meet bi-weekly for worship and roundtable discussion. Their findings are presented to the entire S. C. M. in the regular Friday morning meeting.

The heads of commissions, together with the faculty co-chairmen and the elective officers, among which men and women are equally represented, compose the S. C. M. council.

The S. C. M., which originated with a group of delegates to the Estes Park conference in June, 1935, replaces the Y. M. C. A. and Y. W. C. A. on the Southwestern campus. The local organization is affiliated with the S. C. M. of the Rocky Mountain Region, the National Y. M. C. A. and Y. W. C. A., and the World Student Christian Federation.

Co-chairmen were Kenneth Franks and Mary Ellen Shaw, first semester; Freda Nurse and Bill Harlan, second semester.



ALLAN SCHIRMER, Conductor

## Grace Church Choir



GRACE SELLERS, Organist

GRACE CHURCH CHOIR, under the direction of Allan Faber Schirmer, is well known for its ability, skill, and fine tonal quality. College students who have had training in the musical field or long experience in choral singing appear in the choir. The majority of the members are in the School of Fine Arts and directly under the supervision of Mr. Schirmer. This gives the choir a unity found only in strictly organized groups.

Mr. Schirmer, a graduate of Northwestern University, has had many years of excellent musical training and public performances and has proved himself to be an outstanding conductor of church choir work. Miss Grace Sellers, organist of the choir, continued her fine contribution throughout the year as she has in the past. She gives freely of her time and great musical knowledge in accompanying the choir at the Sabbath services.

Left to right:

WATTS  
L. HAYSE  
EBRIGHT  
VANVALKENBURG  
DAVIS  
DEEVER  
PETER  
RESLER  
COWAN  
DAVIDSON  
R. BURDEN  
GLASS  
WEBB  
D. WHITE  
SHOOK  
SMITH  
ORMES  
SELLEE  
A. NURSE  
WILSON  
J. HAYS  
DIETERICH  
DURR  
DIXON  
N. BURDEN  
SHELDON  
BEAN  
K. WHITE  
SCOTT  
F. NURSE  
NEVENS  
DEEVER  
ESLINGER  
M. VIELE  
LENT  
SELLERS  
SCHIRMER  
L. VIELE  
ELLIOTT  
HOVGARD  
BLOWEY  
I. WILSON  
HINSHAW  
BROWNLEE  
T. NURSE  
SIMPSON





ALVIN MURRAY, *Pastor*

## College Epworth League



LLOYD HARP, *Assistant Pastor*

THE EPWORTH LEAGUE of Grace Church works in conjunction with the College Sunday School department in promoting a definite religious program among students. Under the leadership of Lowell Miller and Robert Davidson, presidents, the League has been constantly meeting the needs of young people. In March, the League and other religious organizations brought Dr. Regina Wieman, practicing psychiatrist of the University of Chicago, to Southwestern campus for two days. Her address will long be remembered by those who heard her. The Reverend Alvin W. Murray finished his second year at Grace Church with an exceptional record. He promoted a deeper and better spiritual atmosphere on the Hill. Much credit is due him for the increased church affiliation and attendance of college students. His assistant, Lloyd Harp, aided in bringing young people into closer harmony with the church and its work.



DAVIDSON  
MILLER  
EBRIGHT  
LIPPOLDT  
JOHNSON  
PETER  
F. NURSE  
DIETERICH  
TRUMBULL  
ELLIOTT  
WILSON  
METTLING  
ECKEL  
MILLIKEN  
BATY  
COUNTRYMAN  
A. NURSE  
HODGES  
DAVIS  
JONES  
MEIER  
DAWSON  
RAMSDALE  
HARP





*Left to right (top to bottom)*—CHUBB, R. ALLEN, V. ALLEN, AMICK, BALLINGER, BENNETT, BOLDT, BRAKEBILL, CARSON, CASTEEN, COCHRAN, COOPER, COURTNEY, CRAIG, CURTISS, DEEVER, DIETERICH, DUNKELBERGER, EARHART, EDGELL, ELLIOTT, FOULK, FRANKS, GIBBON, GRABER, GRESHAM, HALL, HODGES, HOVGARD, JACQUES, JONES, KAUFMAN, C. LANDON, L. LANDON, LEVICK, LIPPOLDT, HERRING, MARRI, MENENDEZ, MIDYETTE, MILLER, MULVANEY, NEVENS, REITZ, RESLER, ROBBINS, ROTH, SCOTT, SHAVER, SHAW, SHOOK, SMITH, STRALEE, STUDE, THOMPSON, TRUMBULL, VINSONHALER, WALLACE, WEBB, WHITE, WILSON, WRIGHT, YOULE, ZIMMERMAN

## English Club

THE English Club exists to establish a medium for the exchanging of ideas, to promote friendship among the English students, and to further creative writing. English majors are given preference in the selection of members, the number of whom is limited to sixty. Other students may be admitted, interest and scholarship being points of consideration. Wiletta Chubb is president of the organization.



J. GRAYDON WILSON

## English Club Poetry Contest Winner

### BEHOLD THE CHRIST!

Behold the Christ, that noble man  
Who taught the world to suffer—and to smile;  
Who hurled idols from their pedestals,  
Himself a God, He would not claim a throne!  
See how He stands above the kings  
Whose scepters are their swords—  
And wields a cross.  
What then, if Love be crowned with thorns  
In earth's great judgment halls,  
And hate with laurel;  
If Truth be spit upon and Wrong embraced—  
His is the crown, the throne, the victory!

—J. GRAYDON WILSON.

## P. K. Club

THE P. K. Club is the organization of nearly sixty "preachers' kids" attending Southwestern College. Members have enjoyed the mutual sharing of experience common only to minister's homes. The club, following a hot debate at its first meeting, unanimously voted that minister's children are not the ideal toward which others should strive; pointing themselves as examples.

The purpose of the club is to maintain social unity among a group of kindred spirits—the obvious P. K. Mr. Lee Kliever acted as president of the newly organized society.

Top row—

SHOOK  
ELLIOTT  
KIEWER  
WATTS  
RAMSDALE  
MOSSMAN  
SWANSON  
MILLER  
DEEVER  
DAWSON  
MAJORS  
DREYDEN  
WALLACE  
McLAURIN  
KIEWER  
SHOOK  
DIETERICH  
MATTHEW  
LENT  
PARKS  
BALLINGER  
HOGGARD  
REMLER  
EBRIGHT  
LAIRD  
FOILES  
COFFEY  
WOLCART  
WEBB  
DIXON  
RENNER  
STEWART  
McINTOSH  
GLASS  
DEEVER  
WHITE  
PARKER  
SCHULT  
HITMELL  
BALLINGER





STOCKING  
ALLEN  
BUHLER  
CLOUD  
GILMORE  
GREENE  
BAKER  
HARLAN  
HENDERSON  
HILFINGER  
JOHNSTON  
MCINTIRE  
MILLER  
F. MOSSMAN  
H. MOSSMAN  
PIKE  
ROBBINS  
SAVAGE  
STUDE  
STUBER  
WOODARD  
YOLLE  
YOUNG

## *Pi Kappa Delta*

PI KAPPA DELTA fosters all activities in debate, oratory, declamation and extempore speaking in state and national contests. Mr. Ward Henderson won first in the state and third in the national peace oratorical contest. At Southwestern's national tournament, organized by Dr. Baker in 1923, more than fifty colleges compete. Mr. Carl Stocking is president of the local chapter.

THE INTER-SOCIETY COUNCIL was founded in 1923 to promote friendship between literary societies and to regulate rush and pledge activities. The council sponsors the Little Theatre Plays and Intramural athletics.

## *Inter-Society Council*

MARSH  
BROADIE  
BROONER  
BUHLER  
DAVIDSON  
FARRAR  
FRANKS  
GRESHAM  
HENDERSON  
HODGES  
JOHNSTON  
JONES  
KAUFMAN  
KELLEY  
KING  
POMEROY  
SHAVER  
SHAW  
VIELE  
WOODARD  
YOUNG  
ZIMMERMAN







## *Wilbur Clark*

That smile of Wilbur's is truly unique; it can't be imitated. Its two chief ingredients are friendliness and sincerity. Anger and hostility melt away and vanish before it. And the smile is but an outward manifestation of the spirit of the man. That is why his associates have seen fit to assign to him offices demanding faithfulness and responsibility; that is why their trust has been justified.

---

*Student President*



## *Harriett Kelley*

Winsome and vivacious, possessing that beauty without fragility which is the charm of the modern woman, by her very nature she rendered the crown upon her head a thing superb.

---

*May Queen and Queen of Homecoming*



## *Winifred Jones*

Add physical beauty, mental aptitude, and delightful temperament, and you have Winifred Jones. Poised and gracious, her personality adds a note of pleasure and propriety to any occasion.

---

*Moundbuilder Queen*





MAXINE GRESHAM

WILBUR CLARK

HARRIETT KELLEY

CARL STOCKING

WILETTA CHUBB

RAYMOND PAGE

THE Master Builders form a group of three women and three men chosen by the student body on the basis of campus leadership and popularity. They are representative of the best that Southwestern has to offer in young manhood and womanhood.

*Master Builders*

[illegible]

FEDERAL PUBLIC WORKS  
PROJECT NO. 2834.

[illegible][illegible][illegible][illegible]

**FEDERAL PUBLIC WORKS  
PROJECT NO. 2834.**

[illegible][illegible][illegible][illegible][illegible][illegible][illegible][illegible][illegible][illegible][illegible]





### Winter along "Limestone Ridge"





Night football packs 'em in.



Hamberger queen and attendants



Hobo a la mode



Falls, who wouldn't?



### Nurses and patients



Psychological conditioning!



White and Evers, scene  
two



Ye Snapshot editor



'intire crowd



Empty mail box, no money



A Cappella conduct—on!



Height of knowledge



### Major subjects



## *Stewart Field House*

"Late November is idyllic in the Walnut Valley; Autumn's gold has all been burned in Nature's great crucible, refining the landscape to a wide range from frosted silver to richest purple."

—McCarter





*"On a November day the great  
game of the season was played on the  
Sunrise field and all the Walnut  
Valley came forth to see" . . . . .*

*—McCARTER*



PHYSICAL







MONYPENY



CLOUD



COOPER

## Athletics

"It was a banner year for Sunrise and enthusiasm was at fever pitch, which in college is the only healthy temperature."

—McCarter.

IN STEWART FIELD HOUSE, on the track and gridiron of Alumni Field, we find the sons and daughters of Southwestern glorying in the physical strength of their young bodies. Under special supervision and excellent training, the motor responses of youth are developed to the maximum of their capacities.

Miss Lillian Cloud, who directs physical education for women, organized the Women's Athletic Association twelve years ago. Its purpose is to promote interest and good sportsmanship among women and to stimulate pep for all college activities.

All athletics for women are sponsored by the W. A. A. Intramural and class teams are organized. Points are awarded in these activities and for hiking, keeping health rules, and for perfect attendance in gym classes, and for scholastic achievement. When 300 points have been amassed the woman is entitled to membership in the Builderettes, the W. A. A. pep club. The white "S" sweater is given for 1,500 points, and the Southwestern blanket for 2,000 points.

The men's intramural program is under the direction of Assistant Coach Don Cooper. Tournaments are held in basket ball, golf, tennis, wrestling, and boxing. The major sports of Southwestern are guided by Coach William Monypeny, aided by Assistant Coach Cooper.

# Football

THE 1935 Southwestern football team will probably be dubbed in history as an intermediary between the two classes of opponents encountered. The upper class will consist of its formidable Central Conference opponents; the lower class, with one exception, should include all the non-conference foes.

Completion of the Builder nine-game schedule left the purple gridders with a record of four victories and five losses. The four other central conference schools, Wichita University, Fort Hays State, Pittsburg Teachers, and the Emporia Teachers were responsible for four of these losses while the Southwestern State Teachers College of Weatherford, Okla., accounted for the fifth. The Builders impressively subdued two Kansas Conference members, the College of Emporia and Ottawa University, and turned back a pair of Sooner teams, the Panhandle Aggies and Oklahoma Baptist University, by convincing margins.

It was commonly held by many sports scribes and authorities that it was quantity, not quality, that the purple gridders lacked, and kept them from winning a number of ball games. Injuries were continually compelling Coaches Monypeny and Cooper to make shifts and alterations in the line-up.



# Football

Co-Captains Joe Urban and Wendell Broadie were two of the outstanding players on the team. Urban was named as captain and quarterback of the All-Conference eleven. Broadie has earned recognition as one of the best guards in the central.

The 1935 season saw the introduction of floodlights at Alumni field, and all home games except one were nocturnal encounters. The lights have been instrumental in raising the attendance of the games this year over past years. On September 27, the Builder gridders officially pruned the lid off their 1935 campaign by smothering the Panhandle Aggies of Goodwell, 40 to 6, in a night game at Alumni field.

The College of Emporia gave the Builders a hard tussle at Alumni field a week later before falling, 7 to 14. On October 18, Southwestern met and lost to Emporia Teachers in the first conference test for both teams. The game was played in a sea of mud on the Hornet gridiron in connection with the Emporians' Homecoming celebrations. The night of October 25 saw the Builders extend their non-conference winning string to four by trouncing the Ottawa University Braves, 25 to 0, at Alumni field. Lud Washington, negro flash, reeled off 68 yards for a touchdown.





# Football

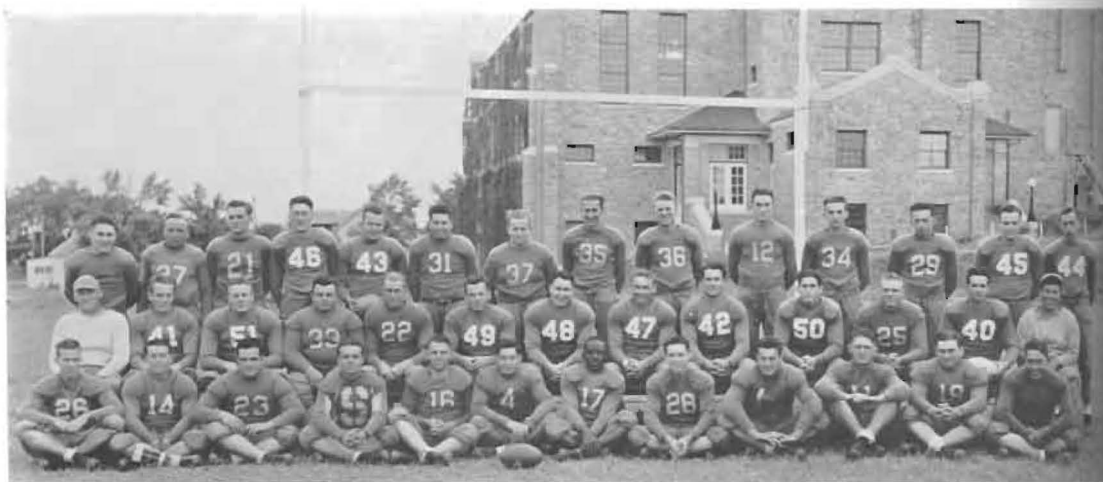
In the game with Fort Hays State, the Tigers convinced Southwestern she would have to look elsewhere for a conference victory by trampling the purple gridders, 20 to 6.

On November 8, with Harold Brill playing the banner role, Wichita came to Alumni field and inflicted a 28-to-0 loss on the battle-scarred Builder eleven. A week later a badly bruised Builder club journeyed down to Clinton, Oklahoma to play the State Teachers College, and lost, 41 to 0.

The last game of the season was played with Pittsburg at Pittsburg. Here the Builders showed surprising strength by badly outclassing the Gorillas in every department of the game but scoring. The final count was 0 to 6 for Pittsburg.

Graduation this spring will leave a number of gaps in both the line and backfield. Gone from the line will be Yergler and Parker, ends; Co-Captain Broadie and Ayers, guards; Wright, tackle. The backfield will lack Co-Captain Urban and Kaufman, quarterbacks; and Lockert and Caywood, halfbacks.

Those men lettering for the 1936 season are: Joe Urban, Wendell Broadie, John Yergler, Albert Floyd, Berne Parker, J. A. MacDonald, Ray Henry, Robert Baltzell, Rufus Wright, Virgil Rhoades, Carl Ayers, James Phillippi, Walter Jones, Jack Daugherty, Kenneth Kaufman, Chalmers Woodard, Kenneth Denny, Gerald Caywood, Eddie Lang, Clyde Lockert, and Beach Medlen.



Back row—MUSICK, JONES, YOUNG, CAYWOOD, BROADIE, RHOADES, MORRIS, MACDONALD, KRELL, REED, STIFF, LANG, AYERS, KAUFMAN  
Middle row—COACH MONYPENY, FLOYD, BALTZELL, STOUTIMORE, PARKER, LOCKERT, HENRY, WRIGHT, YERGLER, MAYSE, KAUFMAN, URBAN  
Assistant Coach COOPER  
Front row—DENNY, MEDLIN, MOORE, WOODARD, DAUGHERTY, FOOTE, WASHINGTON, WEBB, WHITESELL, PAYNE, PHILLIPPI, BROOKS

# Central Conference Basket Ball Champions

FOR the second consecutive year the Southwestern basket ball team reigns supreme over the Central Conference. Last season she shouldered her way to the top after a last-minute struggle and tied Pittsburg Teachers' for championship laurels. This year, however, she successfully quelled her strongest contenders and as a result holds undisputed possession of the 1936 Central Conference Championship.

## SEASON'S RECORD

S. C. won Alva Teachers' 37-38  
 S. C. won Springfield Teachers' 19-25  
 S. C. won Drury College 27-30  
 S. C. won Eastern Illinois Teachers' 27-38  
 S. C. lost Earlham 26-23  
 S. C. won Taylor University 42-41  
 S. C. lost DePauw University 37-33  
 S. C. won College of Emporia 26-41  
 S. C. won Baker University 16-33  
 S. C. lost Central Teachers' 44-36  
 S. C. won Alva Teachers' 34-43  
 S. C. lost Fort Hays 33-28  
 S. C. lost Fort Hays 30-27  
 S. C. won Pittsburg 24-30  
 S. C. won Pittsburg 15-35  
 S. C. won Emporia 38-42  
 S. C. lost Emporia 34-31  
 S. C. won Wichita 32-41  
 S. C. won Wichita 28-35  
 S. C. won Wichita 22-35  
 S. C. won Fort Hays 27-29  
 S. C. won Fort Hays 24-36  
 S. C. lost Pittsburg 33-32  
 S. C. won Pittsburg 24-34  
 S. C. won Emporia 28-41  
 S. C. won Emporia 23-37  
 S. C. won Wichita 25-34  
 S. C. lost Greeley State 45-42

WM. MONYPENY  
Coach



BRYAN  
Co-captain  
Forward



CAYWOOD  
Center



URBAN  
Forward



YERGLER  
Guard



## Basket Ball



PORTER  
Co-Captain  
Guard

TUCKER  
Forward

TRAUGOTT  
Center

SCHIEFELBINE  
Guard

MCDONALD  
Forward

RUTTER  
Guard

PLAYING a total of twenty-eight games, the Builders came through with twenty victories and dropped only eight. In conference competition the Purple Cagers scored a total of 547 points and limited their opponents to 440. S. C. tied with Fort Hays for the best offensive record by maintaining an average of 34.2 points per conference game. The Builder defense was the tightest in the circuit, holding their opponents to a 27.5 average.

After an initial victory over Northwestern State Teachers', the Purple cagers embarked on a barnstorming tour, which took them into Missouri, Indiana, and Illinois. The team won over Springfield Teachers', Drury, Eastern Illinois Teachers', and Taylor. Games were lost to Earlham Teachers' and DePauw. On December 30, the Southwestern intercollegiate tournament, under the direction of Coach Bill Monypeny, brought together sixteen teams representing Kansas, Oklahoma, Texas, Nebraska, and Missouri. Central Missouri State Teachers' won the tourney. Southwestern cinched third by winning from the College of Emporia, Baker, and Northwestern State.

On January 10 and 11 the Builders opened up on their hard 16-game conference schedule by dropping close

# Basket Ball

games to Fort Hays. Returning to Winfield, the Purple team nipped the Pittsburg Gorillas twice. Emporia Teachers' were the Builders' next opponents, and, after annexing the first game, 42 to 38, dropped a 31-to-34 decision. Wichita U. came to S. C. and lost, 41 to 32. Feb. 7 found S. C. again encountering the Shockers for a victory of 35 to 28. S. C. played its third game with Wichita, Feb. 11, and won its third victory. On Feb. 20, Fort Hays State came to Winfield for the "crucial" series. The Builders whipped the Fort Hays cagers rather badly in both encounters. On Feb. 24, Pittsburg won the first game, 32 to 31, but the Builders trimmed the Gorillas, 34 to 24. The Tigers and Builders were in a tie for first place. Fort Hays had two remaining games and S. C. had three. The Builders swamped the Emporia Teachers twice, won her last game with Wichita, while Fort Hays dropped her two remaining games to Pittsburg, thereby giving S. C. her first undisputed Central Conference title.

On March 13, the Builders entered the National A. A. U. Tournament at Denver, Colorado. The Purple cagers, however, lost out in the first round by dropping a very close game to Greely State Teachers, 42 to 45.

COOPER  
Assistant  
Coach



BRATCHES  
Guard



HENSHAW  
Forward



GREEN  
Forward



CLARK  
Guard



REED  
Guard







*Top row*—LAKE, CLEGHORN, SMITH, RUTTER, YERGLER, OSSOWSKI, MOSSMAN, ERWIN, ZERGER, MORGAN  
*Middle row*—COOPER, HOLT, URBAN, FABIAN, NICHOLS, KAUFMAN, MONYPENY  
*Bottom row*—BROOKS, ROBINSON, CAYWOOD, BRANINE, EDGELL

## Track

**D**UE TO the fact that the Moundbuilder goes to press before the track season is completed in the spring, it has been decided to print the results of the preceding season in order to give credit to the boys who have been consistent point winners.

Southwestern's 1935 track team included veterans and several promising freshmen. The team proved victorious in four dual meets and placed second in a triangular encounter.

### SEASONAL RESULTS

Builders.....	79	Ark. City Jr. College...	43
Builders.....	89½	Bethel College.....	41½
Builders.....	80	Alva Teachers.....	50
Builders.....	65½	Phillips U.....	56½
Wichita U.....	82	Builders.....	53½
		Friends.....	26½

220 high hurdles—Rutter, Edgell; broad jump—Baltzell, Ainsworth, Fabian, Urban; javelin—Yergler, Smith, Brooks, Baltzell; mile relay—Nichols, Erwin, Rutter, Mossman; 120-yard high hurdles—Rutter, Mossman; 100-yard dash—Nichols, Robinson, Rutter; mile run—Holt, Caywood, Morgan; 440-yard dash—Mossman, Fabian; shot put—Yergler, Baltzell, Ossowski; pole vault—Kaufman, Urban; 220-yard dash—Mossman, Robinson, Nichols, Smith; discus—Yergler, Baltzell, Ossowski; high jump—Zerger, Kaufman; two mile—Holt, Caywood; half mile—Holt, Erwin, Morgan.



BALTZELL

PAGE

MOSSMAN

BROWN

WOODDELL

KAUFMAN

Social Science Champs—1936 Basket Ball

## Intramurals

### FINAL STANDING

	W	L	Pct.
Social Science "B".....	7	0	1.000
Athenian "B".....	5	2	.714
Delphi "A".....	5	2	.714
Delphi "B".....	4	3	.571
Social Science "A".....	4	3	.571
Laconia "A".....	2	5	.286
S. C. M.....	1	6	.142
Athenian "A".....	0	7	.000

Intramural sports are held in Stewart Field House every Tuesday and Friday evenings throughout the winter months.

### ALL INTRAMURAL TEAM

#### Forwards

KENNETH DENNY, Social Science "A"  
 ALAN WEBB, Laconia "A"  
 ROBERT BROWN, Social Science "B"  
 WENDELL LAKE, Delphi "A"  
 CARL WILBER, Social Science "A"

#### Centers

ROBERT BALTZELL, Social Science "B"  
 BILL STORY, Athenian "B"  
 MERWIN DEEVER, Delphi "A"

#### Guards

EARL BOLDT, Delphi "A"  
 HOMER MOSSMAN, Social Science "B"  
 JAY HOLMAN, Social Science "B"  
 GERALD BEACH, Athenian "B"

### INTRAMURAL WRESTLING RESULTS

115-lb. class—James Watts, 1st; Milton Stocking, 2nd.  
 125-lb. class—Edgar Hinshaw, 1st; James Watts, 2nd.  
 135-lb. class—Edgar Hinshaw, 1st; James Watts, 2nd.  
 145-lb. class—Alan Webb, 1st; Jack Daugherty, 2nd.  
 155-lb. class—Lovell Stuber, 1st; Wendell Wade, 2nd.  
 165-lb. class—Robert Kaufman, 1st; Bob Whitesell, 2nd.  
 175-lb. class—Frazier, 1st; J. D. Krell, 2nd.



JOE URBAN

## Best All-Round Athlete

BECAUSE of his brilliant athletic ability, his calm, unimposing manner, his warm friendliness for fellow students, Joe Urban was voted the most outstanding all-round athlete of Southwestern College for the year 1936.

He lettered four years in basket ball, three years in football, and one year in baseball. He was co-captain of the football squad his last year, and for two seasons was member of the champion intramural double tennis team. He was also a member of the varsity track squad and showed remarkable ability in boxing and golf.

In 1934, Joe was selected as All-Conference quarterback of the second team, and in 1935 was chosen for the same position on the first team, with the honor of being named captain of that mythical eleven.

The basket ball season of 1935 found Joe the highest scoring forward in the Central Conference and was voted by sports writers the best floor man in action. For two years he held the All-Conference forward rating on the second team.

Joe was also active in social affairs, presiding over his Junior class, acting as member of the Student Council, and sitting in the Archon chair for Pi Sigma Phi.



"MAKE it snappy, boys; they're going fast!" What Southwestern man hasn't heard that call as "Pop" handed out the towels? Teams and stars are transient, but "Pop" Price, as he is affectionately called by nearly everyone, stays on to make Stewart gym a proper home for champions.



"Pop" PRICE



## *Smith Hall*

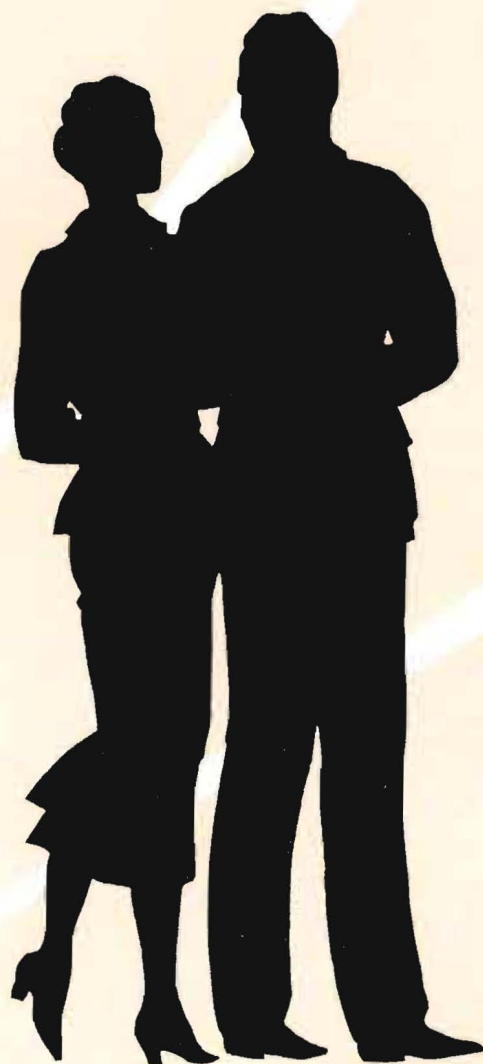
"The evening drops down early in December and the lights were gleaming here and there on the campus where the shadows fall soonest before the day's work is finished up in Sunrise."—*McCarter*.





*"The call of the wild was in that evening woodland camp, in the red glow of fires, the odor of coffee, the freedom, the carelessness and jolly good fellowship of comrades" . . . . .*

—McCARTER



S O C I A L



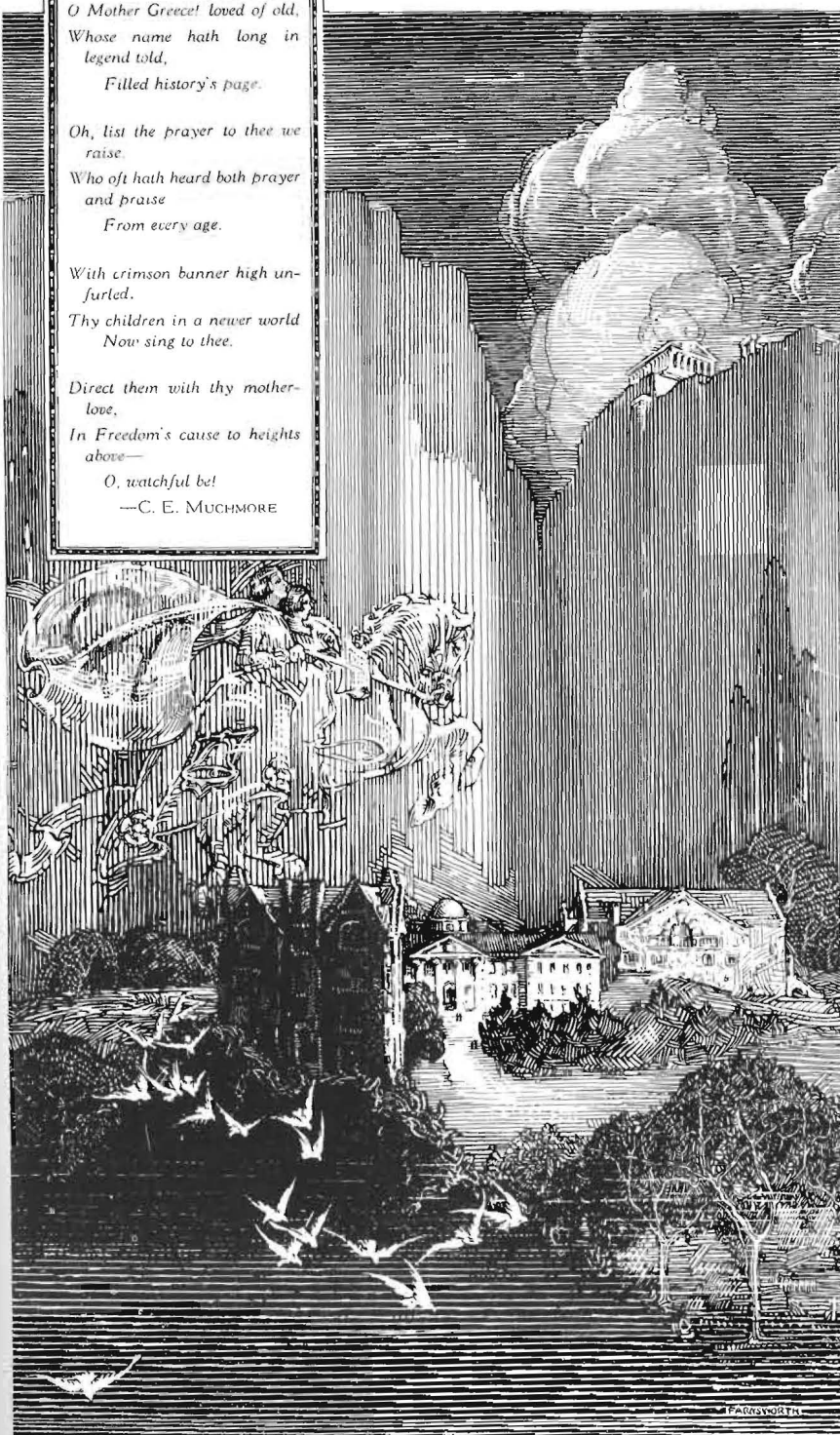
*O Mother Greece! loved of old,  
Whose name hath long in  
legend told,  
Filled history's page.*

*Oh, list the prayer to thee we  
raise,  
Who oft hath heard both prayer  
and praise  
From every age.*

*With crimson banner high un-  
furled,  
Thy children in a newer world  
Now sing to thee.*

*Direct them with thy mother-  
love,  
In Freedom's cause to heights  
above—*

*O, watchful be!  
—C. E. MUCHMORE*





## SIGMA DELPHI HONOR



MAXINE GRESHAM

President; first semester; Campus Player.

WINIFRED JONES

Moundbuilder Queen.

LOUISE WEBB

Queen of the W. U. Football game.

WENDELL BROADIE

Football Co-captain.

WILBUR CLARK

Student President.

WENDELL LAKE

Treasurer.



MAXINE VIELE

President; second semester; Kappa Omicron Phi.

ANN LEVICK

String Quartette.

GLEE YOUNG

Rush Captain.

HOWARD FARRAR

President, second semester; Student Director; A Cappella Choir.

KENNETH KAUFMAN

Executive Committee.

ROBERT THOMPSON

Rush Captain.

# SIGMA

AMICK

ARMOUR

E. BASORE

M. BASORE

BARCUS

R. BATY

BEAN

BENNETT

BLAND

BROADIE

B. BROOKS

C. BROOKS

BROWN

BUSLEY

BYER

CAFFREY

CASTEEN

CHUBB

COLLETT

COOK

COURTNEY

CURRY

R. DAVIS

F. DAVIS

DEEVER

DIETERICH

DIXON

DONOHU





## SIGMA

DOTY

DRESSLER

DYKES

H. ELLIOTT

ESLINGER

EWBANKS

FISHER

GILBERT

GILLOCK

GRABER

M. GROVES

H. HALL

M. HALL

HAYS

HEITMEYER

HOVGARD

E. JOHNSON

L. JOHNSON

LOIS JOHNSON

KNOWLTON

C. LANDON

L. LANDON

LENT

L. LIPPOLDT

M. LIPPOLDT

MCINTIRE

MATHEW

MILLIKEN

MULVANEY

# SIGMA

NEVENS

A. NURSE

F. NURSE

T. NURSE

OLDROYD

ORMES

PARKER

PARKS

PARSONS

PORTER

A. ROGERS

ALTA ROGERS

ROTH

SETLE

SHELDON

SHOCKEY

E. SHOOK

SMITH

STITT

TALBOT

TEMPLIN

THOMAS

TRUMBULL

L. VIELE

D. WHITE

K. WHITE

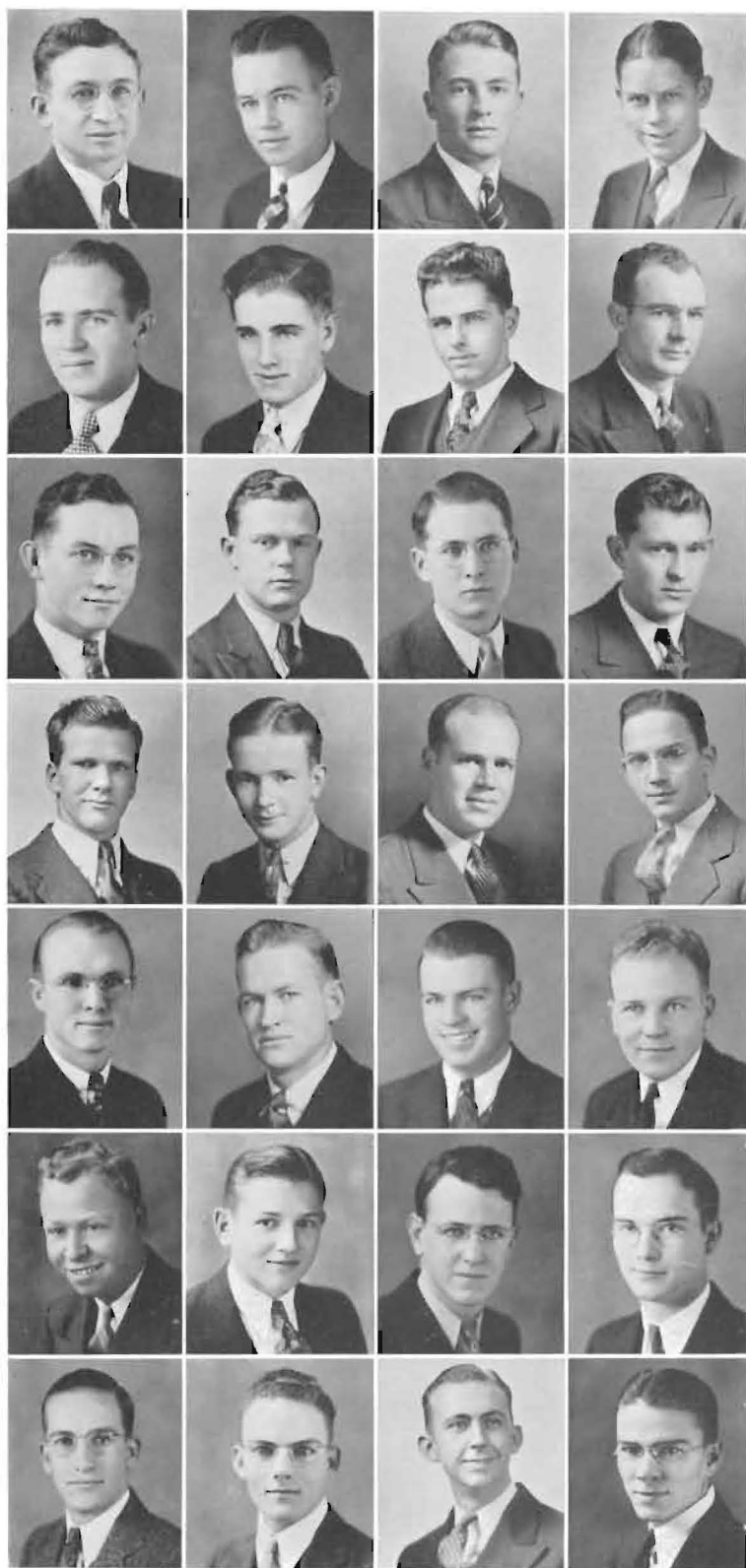
YORK

YOUTE

V. ZIMMERMAN







## DELPHI

AINSWORTH

ANTRIM

AUNER

BOBST

BOLDT

P. BOLES

R. BOLES

BRANINE

BROADIE

BROOKS

BROWN

CALLISON

COE

COOK

W. COOPER

COUNTRYMAN

CURTISS

DALBOM

DAUGHERTY

DAVIS

DEEVIR

DRYDEN

EDGELL

ELLIOTT

FOULK

GERSENER

HARP

HAYES

## DELPHI

L. HAYSE

D. HODGES

W. HODGES

W. HODGES



HOLECEK

HOLMES

S. JOHNSON

L. JOHNSTON



D. JONES

M. JONES

KANTZ

KEATING



KELLER

LENANDER

L. MATTHEW

MARTIN



MEIER

METTLING

A. MILLER

L. MILLER



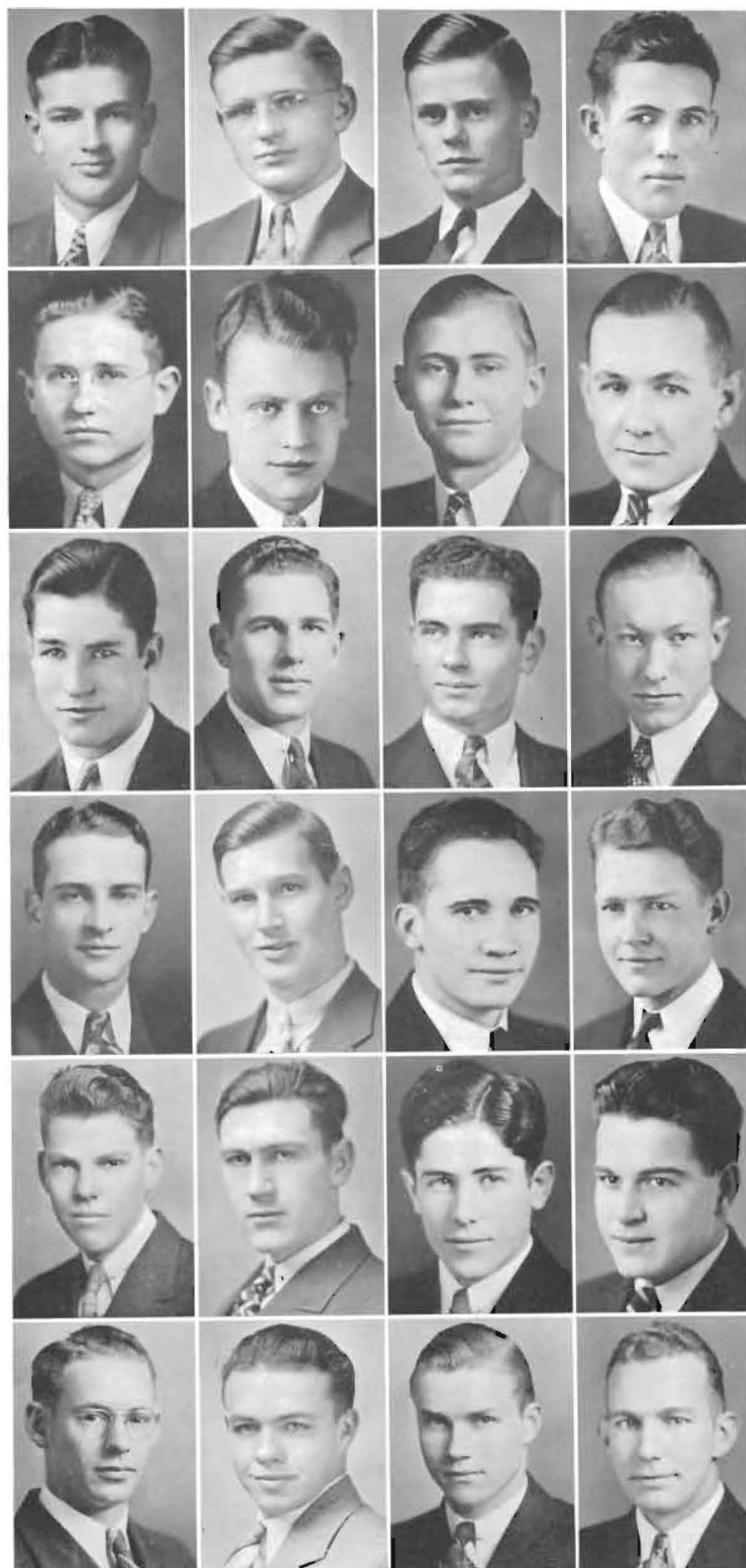
MILLIKEN

NICHOLS

PHILLIPPI

PIPKIN





## DELPHI

COWAN

DAWSON

RAMSDALE

RENTROW

ROBERTSON

SCHWINT

SHULL

SMITH

SPEAS

SPEIRS

SPITZ

STITT

STOCKING

STUDE

G. THOMPSON

R. THOMPSON

VINCENT

WADE

WATTS

WHITESELL

WISE

WOODARD

WORTMAN

YORK



RUTH ALLEN  
Editor of the Fledgling.

JEAN DOBSON  
Jinx Jane.

LUCILLE SHAFER  
Inter-Society Council.

JEAN JOHNSON  
President, first semester.  
President of the Rooters' Club.

GERALD BEACH  
Treasurer.

RAYMOND PAGE  
Leneans.



## BELLES-ATHEN- IAN HONOR



MADELINE COCHRUM  
Social Science Club.

DARLENE JOHNSTON  
Debate.

LUCILLE KING  
President, first semester. Pres-  
ident of Jinx Janes, first sem-  
ester.

HENRY BUSS  
Student Council.

GEORGE BROONER  
President, second semester.  
Inter-Society Council.

BILL PORTER  
Co-Captain of Basket Ball  
Team.





## BELLES LETTRES

ADAMS

ALLEN

AVERY

AYERS

BALLINGER

BENSON

BLOWEY

BROWNLEE

BURDETTE

CAMPBELL

CRAFT

CRAIG

COLE

CLIFT

DUCKWORTH

DUNLAP

ECKELBERGER

ELLIOTT

ELLIS

ENGLISH

GILLESPIE

GILMORE

GIBBON

GREEN

HAMMER

HENDRICKS

HILDERBRAN

HODGE

HUGGINS

ZIMMERMAN

H. KELLEY

P. KELLEY

## BELLES LETTRES

KEIMIG

LITTLE

MCINTOSH

McKNIGHT

McMANUS

MATHES

MENZIE

MICHAEL

MOLZ

MORTON

PATON

PARKER

POUNDSTONE

ROBBINS

RUMSEY

SCHMIDT

SIMPSON

STORY

STOUT

STUBER

THOMPSON

TULL

VANNATTA

VANNATTA

VINSONHALER

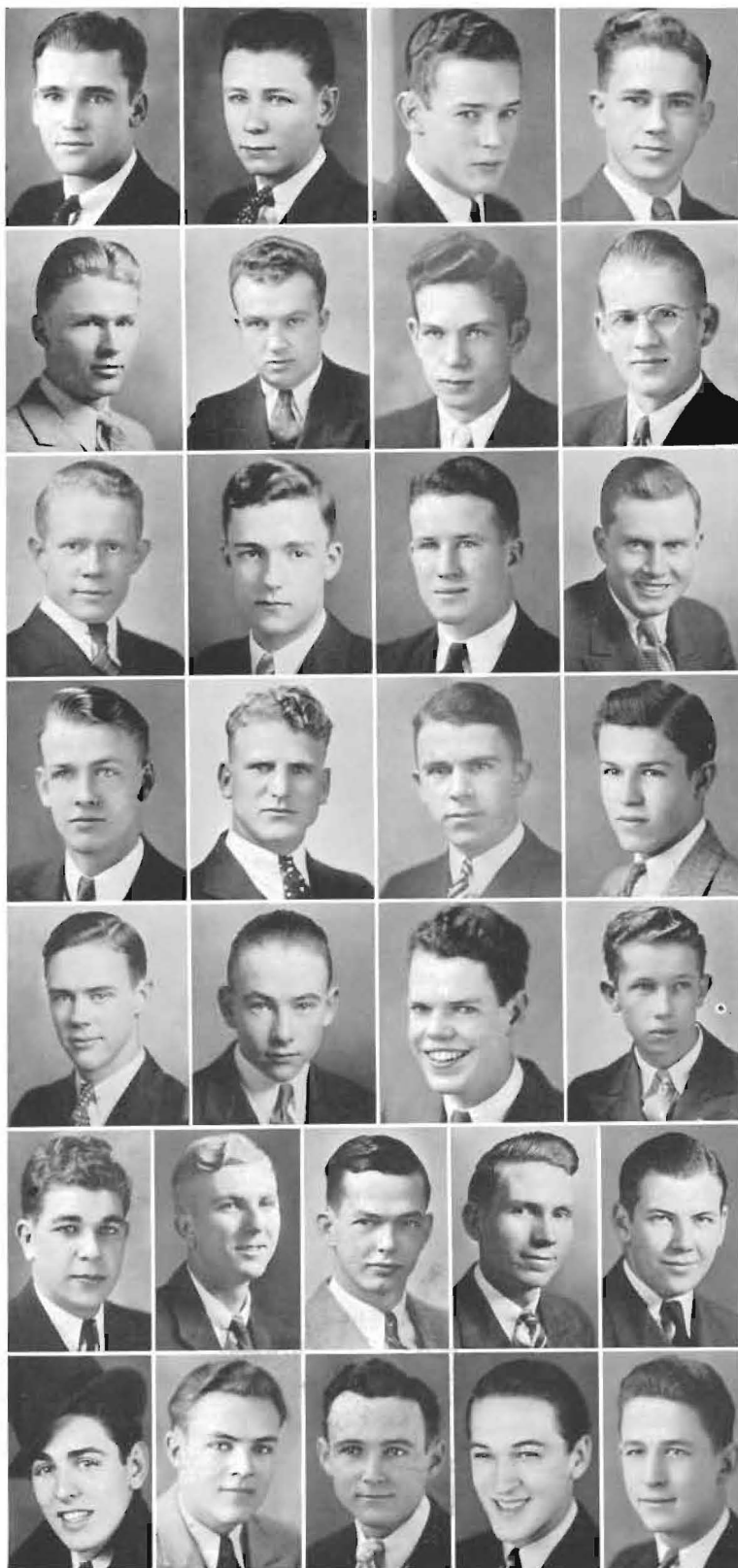
WILMER

WILSON

E. WRIGHT

L. WRIGHT





## ATHENS

BARNES

D. BERRY

R. BROWN

CURRY

DEAL

K. FRANKS

KEITH FRANKS

E. GRAHAM

S. GRAHAM

R. HENDERSON

HOLCOMB

HOLMAN

JARVIS

KRELL

LAWRENCE

W. PRIEST

RESLER

SHANNON

SPONENBERG

STORY

VAN VALKENBERG

VOIGHT

WAINSCOTT

L. WALKER

WARNER

WILDER

G. WILSON

WILLIAMS

WOODDELL

YOULE

## AURORA- LACONIA HONOR

HAZEL FLOOK  
Regent first semester. Kappa  
Omicron Pi.



DALE POMEROY  
Dictator first semester. Student  
Council.



MARTHA WOODARD  
Regent second semester. Debate.



ROBERT DAVIDSON  
Dictator second semester. A  
Cappella Choir.

IRENE BUHLER  
Oratory.



WILLIAM HOLLIBAUGH  
Leneans.

FRANCES ANN GUY  
Dramatics.



WALLACE HILFINGER  
Orchestra.





## AURORA-LACONIA

JACQUES

MANNY

JUNE

L. MATTHEW

M. KING

MAYSE

MOORE

McKNABB

E. NILES

MUSICK

L. NILES

NORTON

ODLE

REED

PIKE

RITTER

RALSTON

C. STOCKING

RHINEHART

STUTZMAN

SILAW

TAYLOR

WARD

TUCKER

D. WILSON

WARBURTON

I. WILSON

P. WILSON

WOODWARD

WRIGHT

WOOLARD

ZIMMERMAN

## AURORA-LACONIA

O. BALLINGER

BRANDON

E. BATY

BUNCH

BOYD

BURDEN

H. BUHLER

CALVERT

BURDEN

CAYWOOD

DURR

WEBB

CLIFT

V. CLARK

F. COOPER

COLLINSON

DENNIS

COOPER

EARHART

DAILY

V. ELLIOTT

ELROD

FAWCETT

FARMER

FRIEMAN

FOOTE

GROVES

GREEN

E. HENDERSON

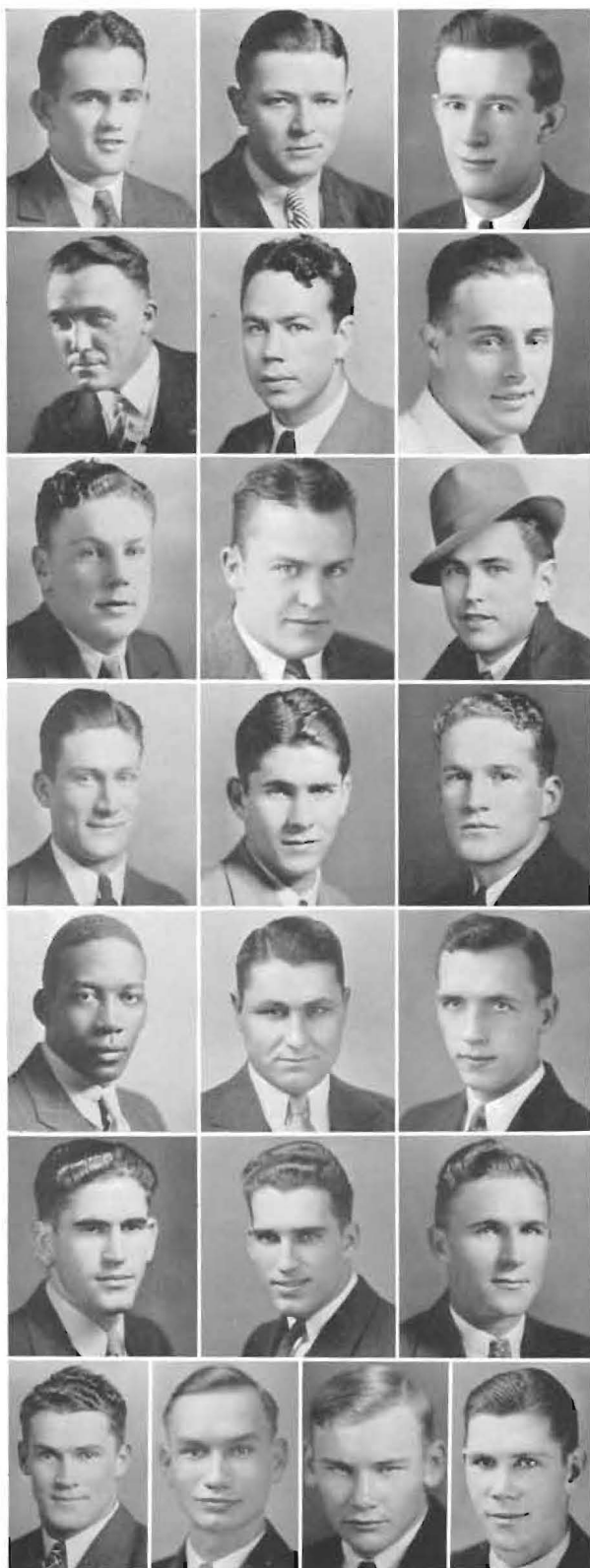
W. HENDERSON

HUSTED

KING

LANCASTER





## PI SIGMA PHI

JOE URBAN, Archon; football, basket ball

DARREL BERRY, Secretary; baseball

HOMER MOSSMAN, Vice-Archon; track

MONYPENY, Coach

COOPER, Assistant Coach

AYERS, football

R. BALTZELL, football

BROADIE, football

BRYAN, basket ball

CAYWOOD, football, basket ball

CLARK, basket ball

FARMER, basket ball

HOLLAND, football

HENRY, football

KAUFMAN, football, track

MAYSE, football

PORTER, basket ball

SCHIEFELBINE, basket ball

YERGLER, football, basket ball, track

ZERGER, track, baseball

WRIGHT, football

RUTTER, basket ball, track

## *To the Staff*

WE WISH to thank the 1936 Moundbuilder Staff for their indispensable help and co-operation in the production of the "Sunrise" college yearbook.

To the three studio's of Winfield, Carpenter's, Hickerson's, and Staley's: we commend you upon the fulfillment of our short-notice schedule, the quality of your work, and the personal interest you have taken in the staff.

We wish to give special thanks for the work of—

Maxine Gresham, for editing the senior class section and the honor pages for society.

Winifred Jones, for editing the junior class section and the faculty.

Mattie Grace Trumbull, for editing the sophomore class section and classifying organization and class photographs.

Thomas Auner, for editing the freshman class section.

Cleo Milliken, for editing the societies.

Charles Curtiss, for writing the text of the feature section, the correcting of printer's copy, and final proof reading of all copy.

Bill Story, for editing the athletic section. Leonard Johnston, for editing the organizations. Marion Wainscott, for staff photography. Dunbar McLaurin, for typing printer's copy.

Winifred Knowlton, Virginia Moore, Marian Deever, Lois May Wright, and Mildred Ayers, for sales campaign management.

M. D. Holmes, for consistent bookkeeping during the sales campaign, and his faithful attention to the duties of assistant business manager.

And to many other students who contributed to the making of the "Sunrise" edition, we again express our appreciation.

LOWELL MILLER, *Editor*.

WILBUR CLARK, *Business Manager*





ELMER Z. REEVE  
*Owner of Winfield Bus Service*

## To "Speed" Reeve . . .

WHAT student has not heard the welcome blast of the dual horns, the hiss of the air brakes as "Speed" brought his new streamlined bus to a stop, took on a passenger, and gave the powerful motors the gun as they roared away down the hill?

Students of this campus do not need a car—they have two of the finest and most luxuriously equipped buses in the state at their command. From early till late these buses never stop in their scheduled fifteen-minute run between the college campus and the down town section.

In September Mr. Reeve gave a ticket to every student of Southwestern College, St. John College, and nurses and supervisors of the hospitals, which was good for a week's free ride on the new bus system. Such rare courtesy is indeed an indication of the worth of the man himself, and of his unselfish devotion to the student life of Winfield.

A member of Delphi Literary Society while attending Southwestern, he never lost the spirit of service, and each year gives free tickets to old members and pledges during pledge week. Even during the year when enthusiastic parties "crash" the bus without paying, "Speed" only smiles and like a good sport says nothing. For these and many other reasons we thank Elmer Z. Reeve for his bus service.

### STUDENT DRIVERS

GLENN AINSWORTH, Argonia  
EARL BOLDT, Belmont  
ERNEST CALLISON, Norwich  
WYATT COOPER, Hutchinson  
ROBERT DAVIDSON, Mt. View, Mo.  
J. WAYNE DAVIS, Lamar, Colo.  
DON MILLIKEN, Augusta  
LEONARD SCHIEFELBINE, Norwich.



*Bus which renders 15-minute service between the College and downtown.*

## Winfield Subscribers

H. F. Barbour, 116 E. 9th.  
Dr. K. A. Benson, 103½ Main.  
Calvert-Cheek Co., 802 Main.  
Carpenter Photo Shoppe, 814 Main.  
College Hill Barber Shop.  
Dr. N. B. Falls, 905½ Main.  
First National Bank, 900 Main.  
Dr. P. W. Gibson, 103½ Main.  
Dr. C. C. Hawke, State Bank Building.  
Hickerson Studio, 815½ Main.  
Dr. F. A. Kelley, 103½ Main.  
M. B. Kerr Co., 112 E. 9th.  
Jack Lane Chevrolet Co., 115 W. 8th.  
J. B. Lynn Department Store, 721 Main.  
H. F. Manny, 115 W. 9th.  
Drs. Martin & Hilfinger, 103½ Main.  
Dr. C. M. McCue, State Bank Building  
Railway Express Agency Inc., W. A. Perciful, Agent.  
Dr. C. T. Ralls, 103½ Main.  
Elmer Z. Reeve, Winfield Bus Service.  
Sheneman Meat Market, 917 Main.  
Drs. Snyder, Jones, Snyder & Snyder, 103½ Main.  
Staley Studio, 206 W. 9th.  
Vincent Grocery, 1001 Main.  
Rev. E. F. Wilcox, 715 Millington.  
Winfield Building & Loan Association, 106 E. 9th.  
Winfield Wholesale Co., 512 Main.  
Winfield Steam Laundry, 612 Main  
Yellow Cab Co., 312 E. 9th.





## *Self-Help at Southwestern*

**I**T TAKES money to go to college. Unfortunately, not every boy or girl who has the ability to profit from college has money. Don't let that keep you away! Southwestern is eager to help to the limit of its resources those who cannot meet all of their expenses. It has to help so many that it cannot furnish full expenses for any one, but it can help those who help themselves. By earning and saving all they can before college, by getting all the aid they can from parents, relatives, and friends, by working during vacations and by careful economy, students should do all they can for themselves and then ask the college to help. Such students will not be denied! There are several ways in which the college can help.

*Loans*—From twenty-five dollars per year up, at low interest. Pay all of your expenses if you can, but borrow if you must. It's a good investment—in your own future.

*Scholarships*—A few endowed scholarships covering partial tuition.

*College Jobs*—From two to four dollars a week up for all kinds of work—payable in board, room rent, or tuition.

*Government Work*—The College furnishes the work—the Government pays the bill in cash—from \$7.50 to \$15.00 per month. This has been done for two and a half years and we hope will be continued.

*Further Information*—Write the Dean, Southwestern College, Winfield, Kansas.



Burger  
Baird  
Engraving Co.

GRAPHIC ARTS  
BUILDING  
KANSAS CITY



SUSTAINED LEADERSHIP

YEAR IN AND YEAR OUT

IS DESIGNING DISTING

UISHED YEARBOOKS AND

MAKING PERFECT

PRINTING PLATES



# More Than 500,000 Annuals



This yearbook represents twenty-one years of school annual printing and binding experience. It was produced by the organization which has printed and bound, under one roof, well over a *half-million* fine college and university yearbooks, representing *150 million* printed pages, for schools in twelve states.

Each staff has its problems. In dealing with 472 such staffs, we have learned to advise them wisely and to produce books they are proud to distribute on their campus. Nine hundred forty editors and business managers endorse our thoroughness and integrity.

When a staff signs a Midland contract, it enlists the aid of a College Printing Department composed of older men of many years' experience, associated with younger men who have the yearbook staffs' viewpoint. The entire book is built under one roof . . . the responsibility of one group of skilled craftsmen.

**MIDLAND PRINTING CO.**  
JEFFERSON CITY     ♦     MISSOURI

SOUTHWESTERN COLLEGE LIBRARY