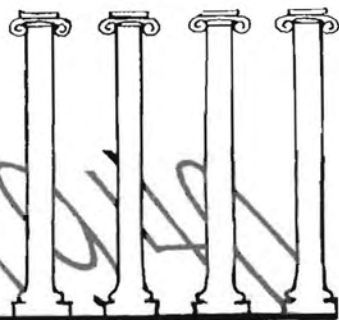
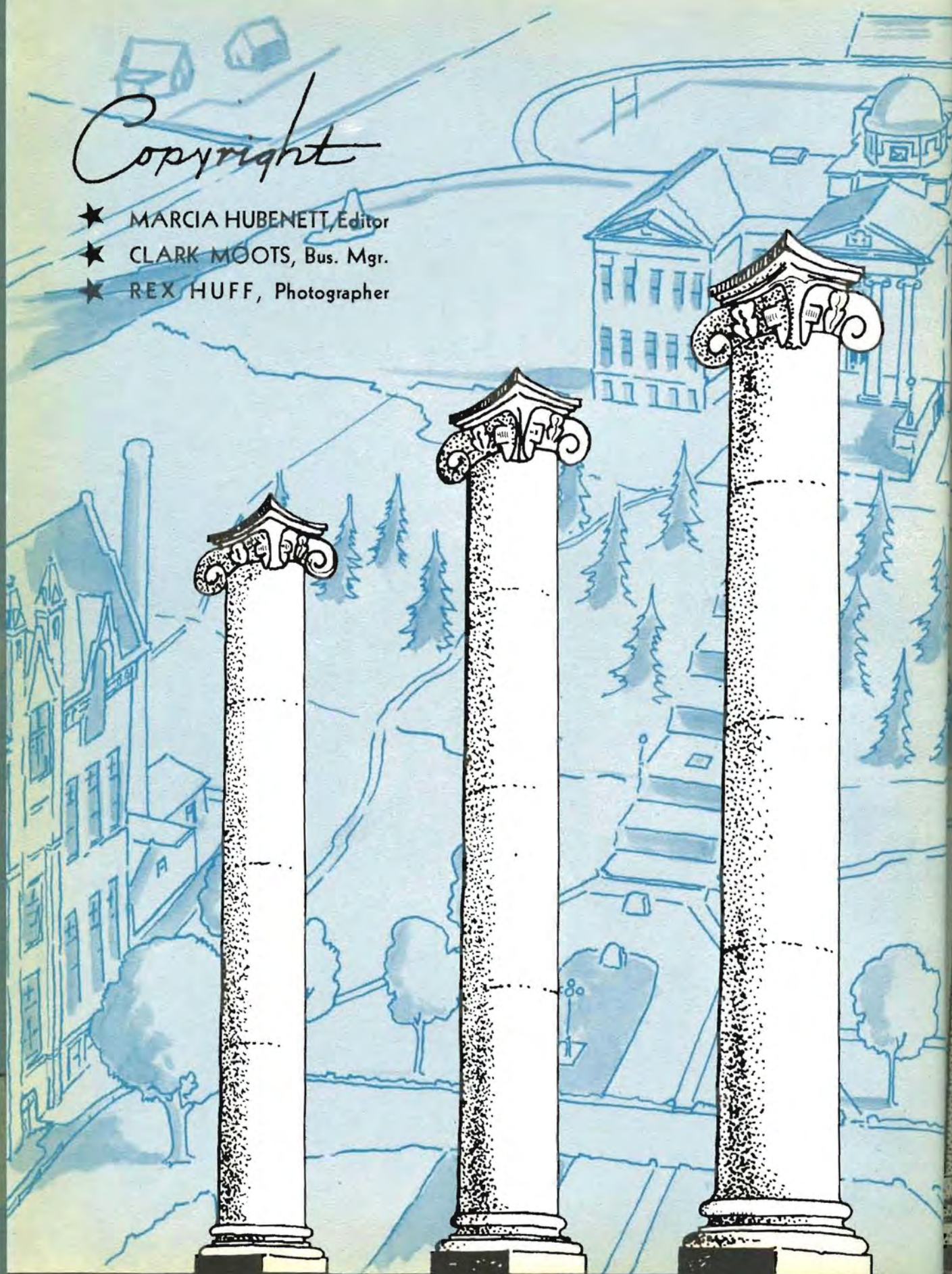


Roundbuilder



Copyright

- ★ MARCIA HUBENETT, Editor
- ★ CLARK MOOTS, Bus. Mgr.
- ★ REX HUFF, Photographer





THE

Roundbuilder

PUBLISHED BY THE
STUDENTS ... OF
SOUTHWESTERN COLLEGE
WINFIELD ... KANSAS



to

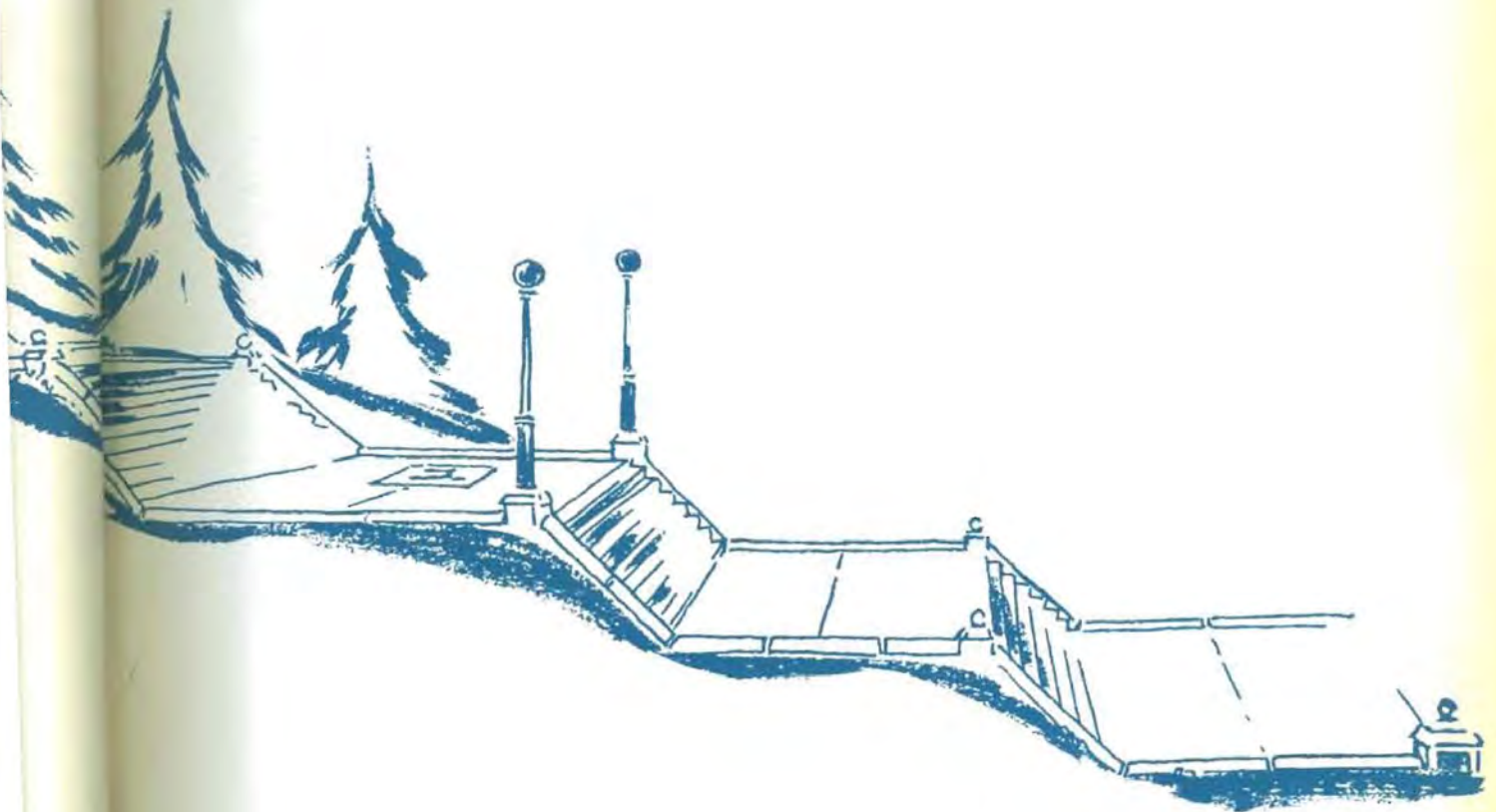
"Bill" Monypeny

whose genuine sincerity, vigorous sportsmanship and deep understanding of people have made him a challenge to us all, we dedicate this 1940 Moundbuilder, tribute to a true Master Builder.



to

you who move with us through this story of a year at Southwestern we give as charm against all evil the Jinx, whimsical, impudent figure of collegiate mythology, guardian of the traditions which have endowed our campus with a spirit of indomitable courage and loyalty. So come with our Jinx up the "77 steps" to where four tall pillars keep the friendly doors of Southwestern.





• "Shadow and Substance", starring the four pillars of Richardson Hall.

Palely beautiful in the white-fired August sunlight, the four stood. Passers-by marveled at their cool serenity; the four only gazed out across the valley in stony silence, remembering. The long years stretched shadow-like down the hillside, years of upholding ideals of knowledge, courage and progress in the West. But the four towered free of the shadows, for they were made of sturdy stuff—of Indiana limestone.

The four pillars of Richardson Hall gazed out across the sun-crisped valley. Then the whimsical one, left center, spoke:

"Listen, you can almost hear the quickened pulse of things, now that September is nearing."

"Don't be stupid!" sniffed the practical one on the north as Charlie sputtered out from the cedars on the electric lawn mower. "There's your quickened pulse beat, and the darn thing cost—"

"Ah, yes; everything has its price," quoth the philosophical pillar.

"But wouldn't mowers come at cut-rates?" quipped the merry one with the southern exposure. The stony silence was resumed; then it cracked sharply. There was a hoarse scream

and an explosion of white steam like Vesuvius gone berserk at the bottom of the hill.

"Blast that boiler house, blowing off steam again!"

"And with Old North, as aged and skittish as it is, standing right along side, too."

"Bah! Old North can stand the internal tremors of bass horns and physics labs; I guess it can stand a little thing like a boiler house for a bosom companion."

"Frankly, I think it's a good idea to blow up once in a while; look at Helen Graham."

Just then Charlie on his two-wheeled lawn shears pt-t-trrmped across the landscape, and a sweet young thing on the path leaped like a Ballet Russe dancer. Recovering, she came up "77" slowly, counting each step.

"New," observed the philosophical pillar.

"Sensible," added the matter-of-fact one.

"Young," smiled the poetic one.

"Pretty," completed the gay one; "mmn, ver-ry pretty."

"So this is Sunset Hill and Southwestern! I've heard of you for so long," she confided to the stoic pillars. "And down there's Old North, looking a bit tipsy for all its last century primness. Over there must be Smith, where my sister

• "You take the low
road
'N I'll take the high
road,
And I'll get to Richard-
son
Afore ye . . ."



stayed. It looks awfully knowing with all those eye-like windows, doesn't it?" She turned to survey the pillars. "Hmm, you do look very wise and stately—but how tiring to be forever upright and dignified." And she left them to meditate upon the fate of those who are pillars of society.



The two freshman girls who had been leaning on the substantial bulk of the pillars in a new and insecure world moved off, discussing events.

"Poor things. Under that bright manner they're terribly frightened."

"There's nothing very ferocious about the Dean of Women; she has a disarming smile. And she always serves excellent punch at this reception for new women."

"It's one of the things Mama sent Suzy to college to learn about."

"Of course, and any little slip short of falling into the punch bowl can be overlooked. By next year they'll even be a bit smug about it."

"I heard a senior boy mention a reception line at Stewart next Saturday night to a freshman."

"Oh, the SCM stag!"

"It's educational, too; but in a different way from the Dean of Women's reception line."

"That's where new fellows learn the wisdom of punctuality; paddle lines are shorter if they're early."

"The sting of resentment is all lost at the watermelon feed and snake dance afterward."

• Prosperity waits just around the corner, waiting to complete Stewart Field House.



Page 9



• Old North, weather beaten, but otherwise unvanquished.

"Life's patent remedy: food and fun."

They swarmed over the steps and up and down "77" like ants in a well-stocked pantry, the Southwesterners of '40. Seniors, juniors, sophomores in the happy hysteria of reunion. Freshmen (glossy veneer, brass-trim or solid oak) seeking their particular niches in campus life. Then the interminable business of enrollment; registration lines as limp and worn as those of a 1930 "deb."



• Acute registrationitis; symptoms: haggard faces and relinquishment of all cash and personal secrets.

At night the sun went down in a bloodshot sky, and darkness brought release and gaiety. The Freshman Mixer began the whirl of events, and the Ghost Walk and party at Murray's served as prelude to the Student Directory. Then one sweltering day the freshmen made their annual pilgrimage to whitewash the "S". It was not all work, not by a jugful; for the girls brought sandwiches 'n cider. Who says it's hard—painting the "S"?

Again the frosh triumphed in the tug-o-war across the lagoon on Class Day, which dawned fair and clear as a soap ad model's skin. Up on the hill "not a creature was stirring, not even a prof." Beginning with "Dipsy-Doodle", the Alma Step—Mater, on the courthouse lawn (everyone kept his shirt on), Southwestern began its march triumphant through town to Island Park. There, amid cheers and gnashing of teeth, college education proceeded with hog-tying and sack-fight contests to a "down to earth" level.

Class Day:

- "Just before the battle, mother, On our way to Island Park."



Under the muffling blackness of the night was heard the heavy pulsing of drums, then a burst of spirited song. Far above on the hilltop, the four pillars waited.

"See, there they come!"

"Who?"

"All Southwestern! Ah, well I remember that first night 12 years ago when Dr. Allen made this dream of his a part of Southwestern tradition. One class after another they've come marching up those steps—like some ancient ceremonial, the torch bearers at the head of each class, the twisting, living stream of light up and down the "77 steps," the rhythmic chant from out the deep night . . ."

"Look at their faces."

"They won't forget this night. That moment by the Mound when the trumpet sounds from Richardson's dome and down in the valley there is the answering echo of another, that moment when each one lays his rock on the Mound, he becomes a part of Southwestern. Everything he

- Won't you try Wheaties?
- Tackle the fash and your name is mud

- Class colors are black and blue
- Sorry, I'm tied up for today

- Give a cheer, give a cheer
For the boys who lead us here



does in four years on this campus is the reply of the second trumpet to the challenge of the first."

"Extremely poetic—but true," granted the matter-of-fact pillar, and a great crack ran the length of its outer dignity.



Seven-thirty on a clear September morning and a girl, her hands full of small white envelopes, coming up the steps.

"'To be, or not to be—that is the question,'" murmured the poetic pillar, at whose base a copy of Shakespeare had once been forgotten.

"Those envelopes are rush invitations, you know what that means."

"Ah, yes—girls in whispering taffeta, flowers at their throats—"

"Girls in whispering circles, hearts at their throats, brother actives on their feet—"

"Hayrack rides, teas, formals—"

"Flour and Limburger cheese on us the night of initiation!"



- Freshman masterpiece: the "S".
- Two Builder presidents at the Mound.



• Watermelons, courtesy of SCM • Autographs, courtesy of Mr. Vanderbilt • Not so fast; there's a governor on the campus • Nice girls do paint—the Jinx • House of Wittelbach and Clan MacGregor • The faculty has a line party • M. Dupre and Marguerite—Vive les arts!

"Oh well, just once a year; they're much milder than a generation ago when one pledge climbed up and chiseled the "W" off the plaque over our heads."

"Must have been a Belle-Lettre."

"If it weren't for the kidnapping of W U's petrified football once in a while, I'd actually worry about them."

And so life goes on, even though many a pledge questions the advantage of it.



• We pledge allegiance to Alma Mater and our Queen

October came, and Southwestern played host to Governor Ratner and the charming First Lady of Kansas. Pigskin once again became fashion's favorite, and football shoulders carried lots of weight in co-eds' choices. The WAA girls added new life to the original nine of the Jinx on "77" with a new fall coat of black and white. Paging Mrs. Astor's horse: Cornelius Vanderbilt, Jr. brought his

trailer de luxe to town and lectured on the international situation. Six-weeks exams and bitter reality struck, while Truth reared its ugly head. Long-delayed letters home were written to explain about grading on the curve. Then to the faculty reception, where the profs who had just killed all fond hopes began butchering students' names.



"Do you know what day this is?" asked the south pillar.

"It isn't the Fourth of July, and Christmas comes but once a year—"

• Homecoming Parade • Strike up the band! Sophomores lead SC onward • We-Wi-Wo(n) first prize! • Bloss does look sweet upon her



"Of course, F. D. R. might have set Thanksgiving up another month," said the pillar on the extreme right side.

"It's Homecoming, my friends, and a fine one! Did you notice, Smith Hall was up all night decorating the house and protecting it?"

"The Flying Dutchmen serenading again?"

"Means higher house bills at Holland again," sighed the far north one.

"Don't be that way! Not when everyone is putting his best into something as important to us all as Homecoming. I hear it's to be the best in years; more floats, more color and spirit, more old grads back- "

"Well, they'll find changes here; new faces, new offices—of course, there's still the graveyard where they erected tombstones for rivals."

"There's still the spoonholder—"

"And the old cave over the hill—"

"And us!"

Down at the foot of the hill an old car bulging with lusty collegians and band instruments rattled, a conservative

• Return of the prodigals to Homecoming assembly



both sides

• If a bicycle built for two

• What does the angry babe say?—WAA!

• KK pulls for SC

• Strike one for Belles-Athens



looking pair on the walk gazed at them, remembering, then came up the broad white steps toward the pillars.

"We've been here a long while."

"But they don't change much."

"It's the same spirit."

"It's Southwestern."

Then sadly, reluctantly as partings at closing time, came the falling of leaves; football was only a memory, highlighted by the annual trek to W U and a lingering dark-brown taste.

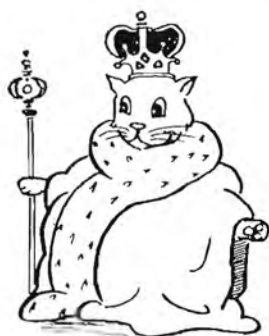


"Beautiful Sunday morning, this!"

"There's something different in the air—"

"If you stood here on the south, you'd know it's dust. Smith Hall is being purged."

"Open house! Every year they clean all corners, nail down all prized possessions



• Tragedy in three acts:

11 a. m.: loading for W U game

10 p. m.: W U, 32 + S C, 0 = 400 Club

6 a. m.: "Darn that Dream"

and invite the public in to marvel and to have tea."

"I hear the Prince will come."

"The Prince?"

"Prince Hubertus zu Loewenstein of the House of Wittlebach."

- Up the "seventy-seven"
- Hey, Crocko! No fair tickling!
- Pledgerism is a common offense
- Crabb follows in our footsteps
- Don't lose your heads, folks; it's just a Halloween stunt
- Marriage ties bind Miller
- Students save "pin-money" for Charlotte Ann Plum
- Elizabeth, Holland Hall's doorstep baby
- "Would I Could But Hold Thy Hand, Oh Babel!" pleads Gulick



"Oh, don't be so encyclopedic! He's very human; he even has a nine-weeks-old daughter whom he hasn't seen yet. Dr. MacGregor said so."

"Then 'tis true; 'tis true."



Down behind the hill where the four pillars stood in the night, Stewart Field House came to life. Lines of eager sports enthusiasts swept through its wide doors and spread over the

brightly-lighted interior. It was the opening of the basketball season: Warrensburg vs. Southwestern. But the Missouri Mules didn't have to be shown, and the Builders had no kick coming. They were the fighting defenders of a national championship, rallying to the tremendous challenge of building a new winning team.



Pre-holiday parties; term papers; the quickened heartbeats over visiting celebrity, Donald Dickson; the seventh annual presentation of the miracle play, "Eagerheart"; and an intercollegiate debate tournament with Dr. Baker directing each turn of events from his swivel-chair.



The headlong rush of week days careened to a close on Saturday night. Sunday was a handful of hours caught from the hoard of Time, rich, glowing, forever apart. Sunlight turning stained glass to burning gold and amethyst where choirs sang praise to the Giver of all good and perfect gifts. The long peace of Sunday afternoon stirred by vesper-goers moving past the four pillars and into the chapel filled with dusk and organ tones. The clock in the upper hall chiming four, and a slight fair-haired boy in spotless vestment mounting the steps to the candelabra. White



• Candlelight and carols at Christmas Vespers.

tapers leaping into joyous flame against deep blue velvet curtains; burnished gold of the harp near them wakening to song; a violin echoing the notes, softly. The leather-padded doors swinging wide for the procession of the A Cappella choir in solemn chant and candlelight. Tableaux speaking the splendor of kings' pageantry, the simplicity of the King's nativity. Unforgettable beauty of Christmas Vespers.

December 15, 11 a. m., and the great exodus began. Taxi drivers staggered under overstuffed suitcases; dormitory doors gasped open for each mad departure; then a mausoleum-like hush descended upon the hill.

* Corn for Builder fans • East comes West for
S C M hobby show • What big eyes you have,
(Dwarf)

* Sign of progress.

* Nails-turkeys rise and shine • K K's set
the pace at a "Gay Ninety" • "Like father,
like son"



Nineteen-forty and we turn over a new leaf

! # / @ (* ? !

Woops! but did the photographer?

These campus cut-ups! Well, put two and two together, and what do you get?

What foreign thoughts may even now lurk behind Bean's sweet angelic smirk?

Little Eva, slight and meek, we're surprised at your technique!

Sweet Annabel, our glamorous mystic, please don't be antagonistic;

And Richard, as Mahatma Ghandi, you are certainly a dandy.

! # / (a)) * ? !



It was a
exams; black
mare. Then

"Say, I h

"Since w

"Oh, bu

"Stop!!!

"It was m

So Confu

The grou

Both meant b

the Bus Ad o

D---; they ju

fire, adding to

brought many

were the gale

speakers must

A yellow

lost in the ven

"That's pr

"I hear C

"They'd b

"Now's v

tons of Indiana

It was a New Year; it was Leap Year; it was Paradise; then it was Paradise Lost. Semester exams; black looks, black coffee; black marks; a general state of mental indigestion and nightmare. Then a new semester.

"Say, I heard a good joke last night," suggested the one, left center.

"Since when have we had a joke column?" snapped the north one.

"Oh, but this is really good! Confucius say—"

"Stop!!! Those Oriental puns offend me."

"It was purely Occidental, I assure you."

So Confucius was laid to rest beside Bismarck and Hazel and Little Audrey.

The groundhog came out to see his shadow, and a skunk came out to Wednesday chapel. Both meant bad days ahead. Someone pulled another boner and put Oscar, the skeleton, in the Bus Ad office, instead of in the Health Ed classroom. But Profs B. and V. didn't give a D---; they just used him for a hall tree. The "Oasis" was reopened to college shieks after its fire, adding to the menu hamburgers fit for the gods of "O-Wimpus". Father and Son Day brought many proud papas to the campus to view their investments in education. Dividends were the gala Washington dinner (where it was decided best to let sleeping dogs lie, but that speakers must tell the truth) and the Southwestern basketball victory over St. Benedict's.

A yellow monoplane against a metallic sky, the roar of its engines lost in the vastness of space.

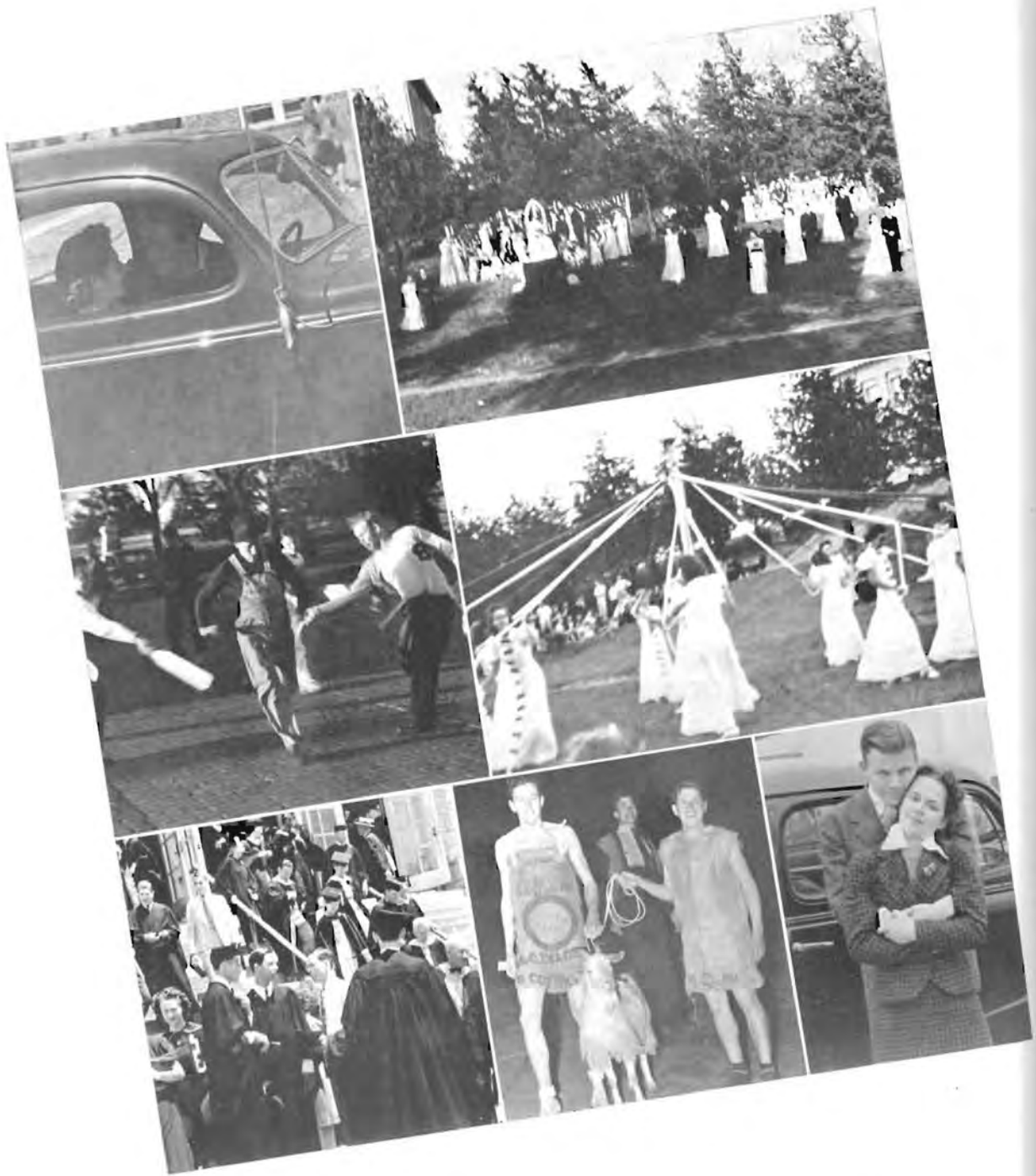
"That's progress: aeronautics at Southwestern."

"I hear Carpenter's letting them solo now."

"They'd better be careful or they'll be soloing in a choir of angels."

"Now's when I'd like to be something more versatile than so many tons of Indiana limestone—"





Spring, essence of the eternal feminine, came teasing along the paths. Vainly professors expounded learned theories to the listening walls, while students dabbled in transmigration of the soul. Astronomy gained new enthusiasts; ditto: tennis and ice cream cones.

For
in a Mis
to the te
black-ro
return
quarter
Hays.

Sen
in memor
early Eas

The
and cont
clouds, a
four pill
path and
of his ow
the marau

- "Think to Me"
- The "Kiss"
- Can and you
will • Clock

For two days a new specie known as the IRC's (rhymes with Snooks a la Bronx) flourished in a Mississippi Valley conference, bringing famous speakers and valuable discussion groups to the tenth annual meeting. When the glory of those days began to pale, Founders Day brought black-robed dignity and the Trustees to Southwestern. Then the basketball team played a return engagement at the National Tournament at Kansas City, pursuing the title right into the quarter-finals. At home they very generously shared the CIC championship with Pittsburg and Hays. "Is everybody happy?"

Seniors began to look with new fondness upon familiar scenes and faces, laying each away in memory's mothballs. Grandmother's flower garden was transplanted to milady's hat for an early Easter. Then spring, in true feminine fashion, changed her mind and the weather.

The fog-choked valley lay grey and mute; the reckless gaiety of false spring became sober and contemplative. Dull silence of darkness before storm; lightning ripping through belligerent clouds, and the wind springing up behind bent cedars. Wild fury of sound and force, and the four pillars gleaming white and calm in the mad night. Slowly a single figure toiled up the path and stood beside them, a rebel exulting in the sulky mood of nature, finding it a reflection of his own experience. He stood with face lifted to the lashing rain, and then he laughed at the marauding wind.

- "Drink to Me Only with Thine Eyes" • The Queen of May holds court
- The "Kings of Swat" welcome initiates • Flash: Frosh set out on May Pole expedition
- Cap and gown farewells • "Sugar" Smith and Stevie let Billy Pi-Sig take the leading role • Cleo-Cola, Bruce?



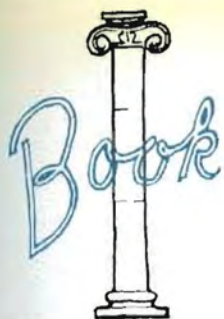
Then Mother Nature took off her four-buckle overshoes, and the campus bloomed with signs of spring: anklets, romances, hyacinths and the lowly sack lunch a-picnicking. What Sadie Hawkins had begun in January of this Leap Year, Dan Cupid carried on with the unknowing aid of the administration, who had granted 12:30 Saturday nights and honesty about open night sign-outs. Three cheers for the "Ad"!

Spring vacation was salvation to chronic sufferers from spring fever. The A Cappella, Leneans, Gospel Team and debate squad went on tour and became life's chief burden to the postman; the debaters came home from Knoxville with a pretty scalp or seven, but no drawl, and the others had added some luster to the name of S C, too. Hortense Monath, pianist, "The Harmonettes", comedian quartet, and "Alf" Landon, ex-governor of Kansas, trailed clouds of glory and fame across the chapel stage.

May, and everyone climbed on the spring merry-go-round of formals and festivities. More on the festive than the formal had been the annual Pi Sig initiation, but their banquet and those of all other organizations were the spirit of "Emily" in full dress.

Palely beautiful in the half-mist of every Southwesterner's memory the four pillars stand, symbols of the traditions and ideals of all Builders.





Roll Call





- Alphabet soup and the daily bill of fare in classroom and laboratory

Administrative Officers

"Foremost among Southwestern traditions is the tradition of progress."

—Frank E. Mossman,
President



Unless it includes President Mossman's accomplishments, any report of this year's progress is incomplete. Since shouldering the responsibility of erasing the school debt in 1931, he has worked tirelessly toward that goal. The result indicates that the books are almost clear. Yet, despite financial responsibility, President Mossman finds time to be a profound judge of human nature and character and to share the rich philosophy of years with those about him. He possesses, too, a sly humor which disarms the most timid freshman. Most important is his sincerity in striving for Southwestern, its future and its improvement.



T. Reese Marsh

In his first year as Dean of Liberal Arts, Dr. T. Reese Marsh has discovered that he must edit the catalog, grant social permits, supervise organization and operation of the curriculum and act as clearing house for faculty and student problems. Add nine hours teaching to other responsibilities and you discover Dean Marsh's formula: "The secret of success is to accomplish a lot without seeming to be busy".

Classic dignity of person blends with modern educational theory to characterize Miss Chalcea White, Dean of Women and head of the home economics department. Extensive study of deans' methods convinces her that individual counsel is of the greatest value in academic, social and financial student adjustments.

Dr. William B. Plum, Dean of Men, also prefers individual to group counsel and stresses it in the work of his Men's Personnel Council with new students. His quiet, methodical manner and practical approach to problems also make him successful as a physics teacher.

A tall, silent man with a slow, understanding smile is Prof. W. J. Poundstone, Registrar. Behind his unassuming kindliness is a mind filled with the innumerable details of his office, education classes and responsibilities as chairman of the athletics committee.

Chalcea White

William B. Plum

W. J. Poundstone



First Row:
Second Row:
Third Row:
Water, B.

Adm

Southw
It is they w
and advice
to register
ance and o

The per
of college
and registra
buildings
nurse.

The Riv
ager for 7 y
with his own
spirit. E. W.
genial finan
well-known
June 20



First Row: Austin, Yerkes, Johnston, Beck, Yarberry, Durnil

Second Row: Mrs. McNeil, Mrs. Cobb, Mrs. Casburn, Mrs. Osen, Mrs. Hildinger

Third Row: Kitzelman, Gylling, Wilson, Van Gundy, Bourquin, Klink, Nurse, McCollom, Miller, Bridgewater, Dieterich, Detter, Mrs. Hyndman, Hill, Hubenett (not pictured)

Administration Assistants

Southwestern's office family is as versatile and efficient as an automat and much more interesting to know. It is they who attend to the details behind scenes, yet they are well known to all on the campus. Their aid and advice is sought by every student at some time during his college course, whether it be getting permission to register, finding out the awful truth about grades, or having a sore throat swabbed. To their kindly assistance and conscientious efforts Southwestern owes much of its success.

The personnel of this group is comprised of the housemothers of the four dormitories, private secretaries of college offices, staffs of the business and registrar's offices, custodians of the buildings and grounds, and the school nurse.

The Rev. W. T. Ward, business manager for 7 years, has endowed that office with his own quick, friendly and efficient spirit. E. W. McNeil, field secretary and genial financial agent of Southwestern, is well-known over the entire conference.



Ward



McNeil



Dr. Annette Andersen
Division of Language and Literature

Dr. Penrose S. Albright
Division of Natural Science

Dr. Rob Roy MacGregor
Division of Social Science

The College of Liberal Arts

The bit of sheepskin bearing the "Bachelor of Arts" inscription which President so generously hands to the deserving few each spring symbolizes the goal visualized for four emulous years of higher education. This process, skillfully developed by our educators, involves intricate organization and precision of administration. To further these causes our College of Liberal Arts has been subdivided into three units, the Division of Language and Literature, the Division of Natural Science and the Division of Social Science.

At the heads of these divisions are the scholarly Dr. Andersen, the invincible Dr. Albright and that combination of efficiency and formality, Dr. MacGregor. Southwestern boasts the distinction of having as chairmen of these divisions three popular and exceedingly capable professors who have earned, among their many accomplishments, the Ph. D. degree in their respective fields. It is they who coordinate the plans and purposes within and among the departments to maintain the best in curriculum offerings.

Students are recommended for honors work and graduate study in their major fields as a result of the knowledge, interest and constant attention of these persons. Departmental clubs in each division better demonstrate the practicability of major fields. The care with which each division is supervised is proved in no small measure by the leadership shown by the institution's alumni.

The School of Fine Arts

When the Chautauqua and the parlor organ were in their heyday and grandfather sang tenor in the barbershop quartet, the powers that be decided that the "three R's" were no longer sufficient. So it was that the School of Fine Arts was established at Southwestern. Over a period of years it has not only maintained a high quality of work, but has also grown steadily. Today the organizations sent out from its various departments have an established and enviable reputation.

Luther O. Leavengood, Dean of Fine Arts, who is completing his fourth year at Southwestern, deserves much credit for the continued success of the school of music. During his administration, new equipment has been added, the Leoti Kibbe Memorial organ installed and a new Baldwin concert grand piano placed in the chapel auditorium. He was also active in organizing the Civic Music Series in Winfield, which has brought such artists as Joseph Lhevinne, Benno Rabinoff, Erica Morini, Donald Dickson and many others to our campus. A special guest artist not included on this civic program was Marcel Dupre, internationally recognized French organist, who gave a concert and conducted master classes here this year.

An operetta, "The Royal Vagabond", was added to this year's program of the School of Fine Arts. It was presented in connection with the Inter-High School Music Contest festival and under the direction of Miss Helen Graham, head of the dramatics department, Prof. Levi O. Dees, director of the A Cappella choir, and Dean Leavengood, director of the symphony orchestra.

Honors work in musical composition was added to the curriculum this year, with Prof. Ralph Briggs, head of the piano department, as instructor.



Luther O. Leavengood

Faculty

DR. PENROSE S. ALBRIGHT, professor of physical chemistry and director of aeronautics, is a progressive and pleasant adviser to many student activities, a scholarly friend to all.



CHARLES K. BERNHEISEL's claims to distinction are birth in Korea and degrees from Iowa Universities. His past, present and future intrigue his economics pupils.

E. MARIE BURDETTE, many of spirit, is piano to her pupils, proof of her instructor.

DR. LEROY ALLEN, founder of Pi Gamma Mu, devotes himself tirelessly to it, his debate teams, and Bible classes, but he still has time for reassuring words to students.



DR. C. V. BERTSCH states with incomparable ease and assurance that " $x + z = \frac{y-v}{2r^2}$ ", adding calmly, "the answer is obviously 'zero', since 'x' is equal to.....!"

DR. CHARLES BURTON, shy and quiet, is a noted writer and biologist and is acquainted with those terms and rare species fill his laboratory.

DR. ANNETTE ANDERSEN, erudite, tolerant, enigmatic, keeps that way by her varied interests, including travel, *New Yorker* cartoons, mythology, drama and philosophy.



EDITH BRAINARD finds it a full-time job to keep 24,300 books and 500 students in good order at the college library.

BILLIE D. CARPENTIER, instructor and open municipal airport, is a capable, efficient, capable, assuming person who made his initial one of enviable

DR. J. THOMPSON BAKER, systematic, energetic professor of public speaking, finds relief in travel and photography from the torrent of speech which fills his class hours.



RALPH BRIGGS, sensitive and brilliant artist, who has studied extensively here and abroad, stresses importance of concentration and coordination of brain and hand for piano students.

LILLIAN CLOUD, secretary, has struck a balance which earned her fellowship and recognition and made her one of most popular Southwestern.

HOBART BARBOUR is the accomplished possessor of a dual nature, that of a successful business man and an equally successful instructor in violincello at Southwestern.



C. O. BROWN, professor of instrumental music, is characterized by his pleasant humor, devotion to Southwestern and the band and willingness to serve.

DON COOPER, basketball coach, teaches coaching in the practice of it with Builders on one

Faculty

E. MARIE BURDETTE teaches harmony of spirit, as well as of piano to her pupils, who are proof of her abilities as an instructor.



LEVI O. DEES, in his first year at Southwestern, has produced a splendid chorus with dynamic interpretation. His pet aversion is "namby-pamby music".

DR. CHARLES BURT, despite his shy and quiet smile, is a recognized writer and authority on biology and is intimately acquainted with those polysyllabic terms and rare specimens which fill his laboratory.



EDITH DIELMANN, gentle and understanding, earns as much commendation of her art work and photography as of her dramatic work with the Leneans and private pupils.

BILLIE D. CARPENTER, flight instructor and operator of the municipal airport, possesses efficiency, capability and an unassuming personality which have made his initial year at SC one of enviable success.



FERN DIELMANN, who shares her sister's interest in photography, brings the technique and inspiration of her study abroad to her piano students.

LILLIAN CLOUD, student secretary, has struck that perfect balance which earns both good fellowship and respect of students and ranks her high on the list of most popular women at Southwestern.



R. B. DUNLEVY'S cheery greeting brightens the campus in all kinds of weather; his home collection of curios and antiques fascinate all student visitors.

DON COOPER, energetic football coach, teaches theory of coaching in the classroom and practices it with his fighting Builders on the field.



EVAN E. EVANS, shrewd and progressive director of supervised practice teaching, lends a capable hand and dryly humorous advice to aspiring pedagogues.

Faculty

HELEN EVERS, with her gracious manner and quick half-smile, elevates the homely maxim concerning "the way to a man's heart....." to a dignified and scientific level in her home economics classes.



DEAN LEAVENGOOD, a rare combination of executive and artistic abilities, is the indomitable force responsible for much of the progressive and extensive program of the School of Fine Arts.

THE REV. ALVIN who "knows as speaks", has, in addition to his regular classes, a community pastor of Grace Church.

HELEN GRAHAM'S creative artistry contrives beautiful settings from paint pots, bits of chintz and uncompromising furniture and creditable Thespians from awkward novices.



DR. ROB ROY MacGREGOR'S tests may make students quail, but eventually they realize he is applying the familiar doctrine "I'm doing this for your own good".

LAWRENCE ONCLEY of chemistry, deserves credit for the notable achievements by his students for the leadership in

MRS. PEARL HAMILTON, in her very thorough and efficient manner, supervises the training of primary teachers at Southwestern.



DR. EMILIE MEINHARDT, whose sharp humor rivals her linguistic ability, has a tongue equally adept at either "nous avons" or "wir sind".

MRS. CORA REDICK'S enthusiasm as the team money and year-training her formula for success in friendly professor.

ADA HERR eats, sleeps and lives sociology and manages to convey this enthusiasm to the classroom presentation of her comprehensive research and study of social problems.



MARGARET MILLER, "Johnny-on-the-spot" in all her journalistic posts, has constructive criticism as her forte and applied psychology as her hobby.

MRS. O. B. SCOTT, diverse versatile and efficient in her commercial classes "language of the post" in typewriting.

IDA CLAWSON HUNT'S public school music classes are forever an inspiration to her students, and her impartiality and kindness make lasting friends of them.



"BILL" MONYPENY, tolerant yet decisive coach of champion basketball teams, teacher of psychology and head of the Placement Bureau, is the friend and able advisor of all students.

L. C. SEAY, brought a drawl and a gift for with students to SC. As an instructor and as of intramurals he has a name of a "reg'lar fellow

Faculty

THE REV. ALVIN MURRAY, who "knows whereof he speaks", has, in addition to his classes, a community charge as pastor of Grace Methodist Church.



GRACE SELLERS' undying love for music, sympathetic interest and willingness to help are the qualities which endear her to all associates.

LAWRENCE ONCLEY, professor of chemistry, deserves much credit for the notable success achieved by his students and for the leadership in his field.



MERLE STEINBERG is known by all her music students and co-workers to be as good-humored and full of fun as she is gentle and understanding.

MRS. CORA REDIC'S genuine enthusiasm as she teaches harmony and ear-training has been her formula for success as a friendly professor.



H. S. VARNER, JR.'S swift and sharp intellectualism is reflected in his brittle conversation and comments, his quick, sure manner.

MRS. O. B. SCOTT, distinguished, versatile and efficient, instructs her commercial classes in the "language of the pot-hook" and in typewriting.



C. I. VINSONHALER, sly, sagacious philosopher, unforgettable to all Southwesterners, translates Latin, German and even English with his own whimsical accent on human oddities.

L. C. SEAY, brought an easy drawl and a gift for working with students to SC this year. As an instructor and as director of intramurals he has won the name of a "reg'lar fellow".



WESLEY WOODSON, modest possessor of the title "assistant in violin", is also well-known and appreciated for his interest in sketching, literature and aviation.

Seniors

OFFICERS

	1st Semester	2nd Semester
President	HOWARD ECKEL	EARL DUNGAN
Vice-President	BOB WHITESSELL	LORENE KIDDOO
Secretary	MARY BROWNLEE	BOB WHITESSELL



LOIS AKERS, Winfield; Biology; Sec'y French Club, S.C.M.; Cosmopolitan Club. • WARREN ALLEN, Cunningham; Voice; Athens Pres. A Cappella Choir; Kappa Rho, Master of Ceremonies. • ROBERT AMRINE, Winfield; Business Administration.

VIRGINIA AUSTIN, Nickerson; Public School Music, Piano Diploma; Band; Orchestra; A Cappella Choir; Pres. Belles Lettres; First Church Choir; Piano Culture Class. • ADELAIDE BADEN, Winfield; English; Student Council; Belles Lettres; Orchestra; Inter-Society Council; Sec'y International Relations Club; English Club; May Queen. • VIOLET BEEMAN, Winfield; Home Economics; Sec'y Kappa Omicron Phi; Vice-Pres. Gamma Omicron Phi; Orchestra; Sigma Pi Phi.

DON BIRCHENOUGH, Anthony; Business Administration; Pres. Delphi; Inter-Society Council; Student Council; Sec'y Personnel Council. • GENEVA BLAND, Argonia; Business Administration; Sigma Pi Phi; Debate; International Relations Club. • RACHEL BRADY, Cleveland; Language and Literature; W.A.A.; French Club; Sigma Pi Phi; Builderette.

MARY ELLEN BROWNLEE, Pretty Prairie; English and Social Science; Pres. Belles Lettres; K.K.; Sec'y Student Council; Pres. Pi Gamma Mu; Sec'y Pi Kappa Delta; Who's Who; Masterbuilder; Sec'y Senior Class; Debate; Oratory; Extemporaneous Speaking; Inter-Society Council. • JOE CARRIER, Beloit; Business Administration; Delphi; Intramurals; Leneans. • DEAN COUCH, Winfield; Chemistry; Physics and Mathematics; Pres. Science Club.

GLENN COUNTRYMAN, Winfield; Business Administration; Sec'y Vice-Pres. Epworth League; Student Council; Intramurals; Delphi. • HARVEY CRABB, Bucklin; Social Science; Delphi; S.C.M.; Intramurals; International Relations Club; Epworth League. • MAXINE CROW, Alamosa, Colorado; Business Administration; Pi Gamma Mu; Sigma Pi Phi; Pres. Jinx Janes; Homecoming Queen.

KATHRYN DAVIS, Raymond, Mississippi; Business Administration; Music; Belles Lettres; A Cappella Choir. • WILLIAM DUDLEY, New Brunswick, New Jersey; Pre-Medic; Science Club. • EARL DUNGAN, Alden; Instrumental Public School Music; Pres., Bus. Mgr. Student Dir. A Cappella Choir; Pres. Delphi; Band; Orchestra; Pres. Personnel Council; Student Council; Pres. Kappa Rho; String Quartet; Pres. Senior Class; Collegian; Moundbuilder.

MARTHA EATON, Winfield; Music. • HOWARD ECKEL, Lenexa; Business Administration; A Cappella Choir; Pres. Epworth League; Athens; Cabinet S.C.M.; Pres. Senior Class. • GRACE EDWARDS, Arkansas City; Social Science.

CHARLES ELLIOTT, Robert Fleener; Bus. Mgr. Collegian; History; Pi Sigma Phi.

MARY WARNER, Fairbury; Cappella Choir; Music and Business; Choir. • BARBARA GROESMAN, Sociology; Pi Kappa Phi; International Relations Club.

VICTOR GILLESPIE, Basketball; Athens. • GREEN, Winfield; English Club; S. C. M. Sigma Pi Phi; French Club.

LUCILE GROVES, Maquoketa; Sigma Pi Phi; Builderette; Illinois; English; English and Religion; Pres. Pi Gamma Mu; Intramurals.

HAZEL HENDRICKS, Sigma. • RUTH H. Club; Belles Lettres; Sigma; Pres. K. F.; Pres. Campus Players.

REX HUFF, Preston; Photographer; Moundbuilder; Chemistry; A Cappella Science Club. • JINX JANES, Pres. Sigma Kappa; Gamma.

CAROL KING, Douglas. • J. D. KRELL, Oxford; Football; Intramurals; English; English Club; Celtic Club.

FRANK LITTLE, Richland; Marine; Copeland; Junior Class; Intramurals; Football. • RUDOLPH M. Team; Pi Sigma Phi; Fencing.

CHARLES ELLIOTT, Winfield; Biology and Chemistry, Athens. • ROBERT FLEENER, Liberal; Accounting; Athens; Pres. Kappa Rho; Bus. Mgr. Collegian; Intramurals. • JACK FORRESTER, Winfield; History; Pi Sigma Phi; Tennis; Basketball; Intramurals.

MARY WARNER FUNSTON, Winfield; Voice; Band; Orchestra; A Cappella Choir; Belles Lettres. • SCOTT FUNSTON, Winfield; Music and Business Administration; Band; Orchestra; A Cappella Choir. • BARBARA GARDNER, Hutchinson; Social Science and Sociology; Pi Kappa Delta; A Cappella Choir; Student Council; International Relations Club; Personnel Council.

VICTOR GILLESPIE, Arkansas City; Education; Football; Track; Basketball; Athens; Pres. Pi Sigma Phi; Intramurals. • CHARLES GREEN, Winfield; Education; Intramurals; Student Council. • BARBARA GROSSMAN, Cullison; English; Pres. Cosmopolitan Club; English Club; S. C. M.; Pres. Estes Co-op; Epworth League Cabinet; Sigma Pi Phi; French Club.

LUCILE GROVES, Medicine Lodge; Speech; W. A. A.; English Club; Sigma Pi Phi; Builderette. • GRACE GYLLING, Downer's Grove, Illinois; English; English Club. • ROBERT HAINES, Winfield; Bible and Religion; Pres. Oxford Fellowship; A Cappella Choir; S. C. M.; Pi Gamma Mu; Intramurals.

HAZEL HENDRICKS, Beaver, Oklahoma; English; Jinx Janes; Debate; Sigma. • RUTH HILLYARD, Lakin; English and Speech; English Club; Belles Lettres. • MARCIA HUBENETT, Preston; English; Sigma; Pres. K. K.; Who's Who; Ed. Moundbuilder; Personnel Council; Campus Players; Masterbuilder.

KEY HUFF, Preston; Education; Delphi; Social Science Club; Photographer; Moundbuilder; Flying Builders. • GLENN HULL, Kingman; Chemistry; A Cappella Choir; Delphi; Grace Church Choir; Science Club. • LORENE KIDDOO, Canton; Home Economics; Jinx Janes; Pres. Sigma Pi Phi; Personnel Council; A Cappella Choir; Kappa Gamma.

CAROL KING, Douglass; History; Jinx Janes; Sigma Pi Phi; W. A. A. • J. D. KRELL, Oxford; Pre-Law; Bus. Mgr. Campus Players; Athens; Football; Intramurals. • VERNON LALLEMENT, Cherokee; English; English Club; Oxford Fellowship; A Cappella Choir; Cosmopolitan Club.

FRANK LITTLE, Richfield; Bible; Oxford Fellowship. • DALE MARINE, Copeland; Business Administration; Pi Sigma Phi; Pres. Junior Class; Intramurals; Student Council; Personnel Council; Football. • RUDOLPH MARTIN, Trousdale; Physics; Co-Capt. Football Team; Pi Sigma Phi; Personnel Council.





MIYUKI MASUDA, Hawaii; Chemistry; Cosmopolitan Club; Science Club. • KENNETH McCAFFREE, Leon, Sociology; Pi Kappa Delta; Pi Gamma Mu; Student Sec'y Grace Church; Treas. Athens. • EVAN McCALL, Canton; History; Campus Players; Leneans; Athens; Intramurals.

RICHARD ROSS, Cosmopolitan Club. • EUGENE SET, Pi Gamma Mu, C. SHUMATE, Mimi Delphi, A Cappella.



MARTHA McDERMOTT, Winfield; Organ; Orchestra; Belles Lettres, K. K. • EARL McGINNESS, Aulne; Religion; Biology and English; Oxford Fellowship; S. C. M.; Gospel Team; Cosmopolitan Club. • MARGARET McINTOSH, Fulton; Public School Music; Orchestra; Church Choir; A Cappella Choir; String Trio; Speech Choir; Belles Lettres.

WARD SIMS, Choir, Epworth. • DOROTHY S. Phi, Jinx Jones, Pi.



WILHEMINA McSWAIN, Enid, Oklahoma; Economics. • HEE MILLER, Winfield; Bible and Religion; Gospel Team; Oxford Fellowship; Co-Chairman S. C. M.; Pi Gamma Mu; Critic and Reporter; Delphi; Epworth League Cabinet; Student Minister. • LENA ANDERSON MITCHELL, Winfield; English; Vice-Pres. Person Council; Cosmopolitan Club; English Club; Ed. Collegian; Sigma Pi Phi; Sec'y Sophomore, Junior Classes; Moundbuilder; Pi Gamma Mu; Who's Who; Orchestra.

LEAH SPITZE, K. Gamma Chapter Pi STEVICK, Nowa Club, French Club, Sigma Pi Phi, S. Wichita, English, Pres. Sigma Pi Phi, Honor Student.



CLARK MOOTS, Medicine Lodge; Mathematics and Chemistry; R. Capt. Delphi; Pres. Student Council; Bus. Mgr. Moundbuilder; Mgr. A. Cappella Choir; Pi Kappa Delta; Kappa Rho; Inter-school Council; Personnel Council; Honors Student. • JIM MOORE, Winfield; Chemistry; Rush Capt. Athens; A Cappella Choir; Sigma Intramurals. • WILLARD MYER, Winfield; Music; Orchestra; Belles Lettres.

FRANCIS TAYLOR, Music, Science Club THORNE, Sedan, Collegian, S. C. A. nomics, A Cappella, James, Sigma Pi Phi.



JEAN ONCLEY, Winfield; English; Sigma Pi Phi; Vice-Pres. J. Janes; English Club; Orchestra; Moundbuilder. • DON OTT HOUT, Winfield; History and Political Science; Athens; Intramurals; Football; Track; Dramatics. • WANDA OVERBEY, Winfield; English and French; Pres. French Club; Collegian; Orchestra.

FRED TORRANCE, Band; Orchestra; City; Biology; Student WEBBER, Huskies, Flying Builders.



MARGARET PARKER, Winfield; English; English Club; Belles Lettres; International Relations Club. • CECIL PORTER, Winfield; Business Administration; Football; Basketball; Pi Sigma Phi. • LEON CLIFF, Belle Plaine; Chemistry and Mathematics; S. C. M.; Sigma Club; Treas. Estes Co-op.

LYLE WEIGLE, WHITE, Burden, Ed Clearwater; Business Delphi; Intramurals.



REX RECCIUS, Hooker, Oklahoma; Economics; S. C. M.; Social Science Club; Intramurals. • GWENN REIMER, Sterling; English; Cosmopolitan Club; English Club; Oxford Fellowship; Co-Chairman Gospel Team; S. C. M. • EDITH RICKERS, Plains; Home Economics; K. Pres. Gamma; Sigma.

WAYNE WILSON, Science Club, S. C. Music and Violin Intramurals, Staff Artist, Oklahoma; Chemistry, Letters, Buildersville.



LOUIS RIEBE, Augusta; Business Administration; Delphi; Social Science Club; Band; S. C. M. • FRANCES ROBINSON, Winfield; English; Speech and Dramatics; Campus Players; K. K.; English Club; Belles Lettres. • DAVID ROHL, Arkansas City; Education; Vice-Pres. Sigma Phi; Athens; Football; Student Council; Pres. Sophomore Class.

JERRY YARBERRY, Pi Kappa Delta. • Geology, Pi Sigma Phi.

Science
Delta;
VAN
Intra-

RICHARD ROSS, Bidar, Deccan, India; Pre-Medic; Delphi; Kappa Rho; Cosmopolitan Club; Debate; Choir; Science Club; Flying Builders.
• EUGENE SETZKORN, Dodge City; Biology; Cosmopolitan Club; Pi Gamma Mu; Chapel Committee; S. C. M. Cabinet. • EDMOND HUMATE, Minneola; Chemistry; Science Club; Co-Chairman S. C. M.; Delphi; A Cappella Choir.

Lettres;
English;
b.
hestra;
Belles

WARD SIMS, Minneola; Biology and Pre-Medic; Delphi; A Cappella Choir; Epworth League. • RALPH SMITH, Liberal; History; Pi Sigma Phi; Student Council; Vice-Pres. Athens; Basketball; Intramurals. • DOROTHY SPITZE, Kinsley; Business Administration; Sigma Pi Phi; Jinx Janes; Pi Kappa Delta.

HEBER
ellow-
porter,
LENA
sonnel
Sigma
Gamma

LEAH SPITZE, Kinsley; Home Economics; Pres. Kappa Omicron Phi; Gamma Omicron Phi; Sigma Pi Phi; Personnel Council. • DOROTHY STEVICK, Nowata, Oklahoma; Language and Literature; English Club; French Club; A Cappella Choir; Church Choir; Vice-Pres. Sigma Pi Phi; Sec'y-Treas. Jinx Janes. • MILDRED STOLLE, Wichita; English; English Club; Social Science Club; French Club; Pres. Sigma Pi Phi; Pi Gamma Mu; Vice-Pres. Inter-Society Council; Honors Student.

y; Rush
ry; Bus.
ociety
ORRIS,
Band;
Band.

FRANCIS TAYLOR, Joplin, Missouri; Chemistry, Physics and Mathematics; Science Club; Band; Orchestra; Flying Builders. • MILTON THORNE, Sedan; History; Delphi; Social Science Club; Intramurals; Collegian; S. C. M. • MARGARET TOBIAS, Lyons; Home Economics; A Cappella Choir; Pres. Gamma Omicron Phi; Pres. Jinx Janes; Sigma Pi Phi.

s. Jinx
OSTER-
murals;
Winfield;

FRED TORRANCE, Winfield; Chemistry, Physics and Mathematics; Band; Orchestra; Science Club. • ERLE VOLKLAND, Arkansas City; Biology; Student Council; Staff Artist Moundbuilder. • JAMES WEBBER, Hugoton; Chemistry; A Cappella Choir; Intramurals; Pres. Flying Builders.

Lettres;
Business
N RAT-
Science

LYLE WEIGLE, Winfield; Economics; Intramurals. • EVERETT WHITE, Burden; Education; Student Minister. • BOB WHITESELL, Clearwater; Business Administration; Football; Pres. Pi Sigma Phi; Delphi; Intramurals; Sec'y Senior Class; Flying Builders.

Science
Cosmo-
Gospel
Kappa;

WAYNE WILSON, Winfield; Business Administration; Athens; Social Science Club; S. C. M. • WESLEY WOODSON, Hutchinson; Music and Violin Degree; Orchestra; Faculty String Quartet; Intramurals; Staff Artist Moundbuilder. • HELEN WRIGHT, Adair, Oklahoma; Chemistry; Sec'y-Treas. W. A. A.; Science Club; Belles Lettres; Builderette.

Science
English;
Belles
Pres. Pi
e Class.

ERRY YARBERRY, Winfield; Business Administration; Sigma Pi Phi; Pi Kappa Delta. • WILLIAM YOUNG, Protection; Education and Geology; Pi Sigma Phi; Intramurals; Co-Capt. Football Team.



Juniors

OFFICERS

President
Vice-President
Secretary

1st Semester
PHYLLIS SHOOK
TED DIETERICH
VERA BERRY

2nd Semester
JESSE GULICK
NEAL DILLMAN
VERA BERRY



JACK BANKS, JR.
Winfield, Kansas

BEN BARKER
Winfield, Kansas

ALFRED BARNES
Winfield, Kansas



EDDIE
Ashland, Kan.

FLORABELLE BENJAMIN
Wichita, Kansas

DWIGHT BENTON
Pratt, Kansas

VERA BERRY
Cullison, Kansas

JOSEPH BINFORD
Arkansas City, Kan.

FREDA BRIDGEWATER
Beaver, Oklahoma

BILL BROWN
Winfield, Kansas

KENNETH BURSACK
Oxford, Kansas

RUSSELL DAUGHENBAUGH
Burdett, Kan.

VERNA DAUGHENBAUGH
Burdett, Kansas

CORNYN DAVIS
Raymond, Mississippi

MARY JANE DEAN
Copeland, Kansas

JOHN DEON
Pawnee Rock, Kan.

MILDRED DEMAREE
Wichita, Kansas

LAJEUNE DIETERICH
Walton, Kansas

TED DIETERICH
Winfield, Kansas

NEAL DILLMAN
Hesston, Kan.

QUENTIN DOTY
El Dorado, Kansas

MABEL EMBERS
McPherson, Kansas

ARTHUR FRARY
Eureka, Utah

MAJORE
Kinsley, Kan.

LEROY GERSTBERGER
Copeland, Kansas

JAMES GILBERT
Halstead, Kansas

ROBERT GREEN
Beaver, Oklahoma

JESSE GULICK
Burdett, Kan.

WENDELL HAYS
Topeka, Kansas

HERBERT HENDRICKS
Beaver, Oklahoma

NORTON HILDRETH
St. John, Kansas

IDA HINSHAW
Winfield, Kansas

CLYDE JONES
Wichita, Kansas

ROSEMARY KIMBLE
Parsons, Kansas

ARTHUR KININMONTH
Winfield, Kansas

MARGERY KNEPPER
Winfield, Kansas

RICHARD LEFTWICH
Burden, Kansas

EMERSON MacDONALD
Hackettstown, New Jersey

KARL MAGNUSSON
Udall, Kansas

JOE McCOY
Hugoton, Kansas

IMOGENE MENDENHALL
Fort Dodge, Kansas

ESTHER MERRIAM
Winfield, Kansas

NORMAN MUNDINGER
Winfield, Kansas

MARY NICHOLSON
Hardtner, Kansas

AGNES NURSE
Medicine Lodge, Kansas

ALBERTA NUSSE
Modesto, California

LAWRENCE OTT
Lawley, Kansas

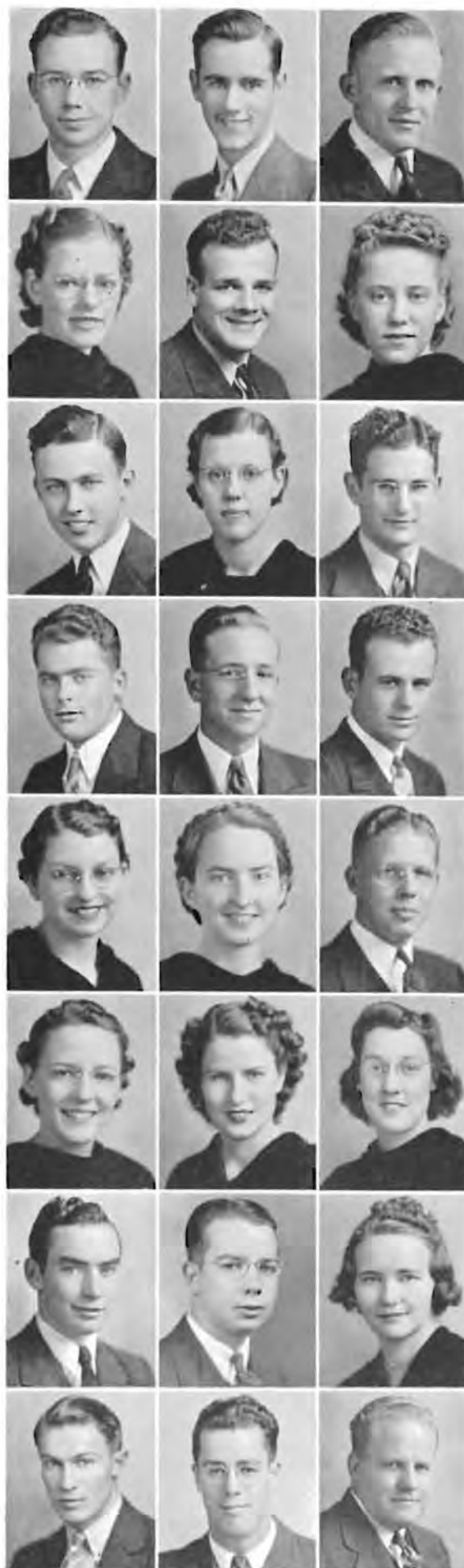
LEO PATTON
Sublette, Kansas

IRENE PICKERING
Winfield, Kansas

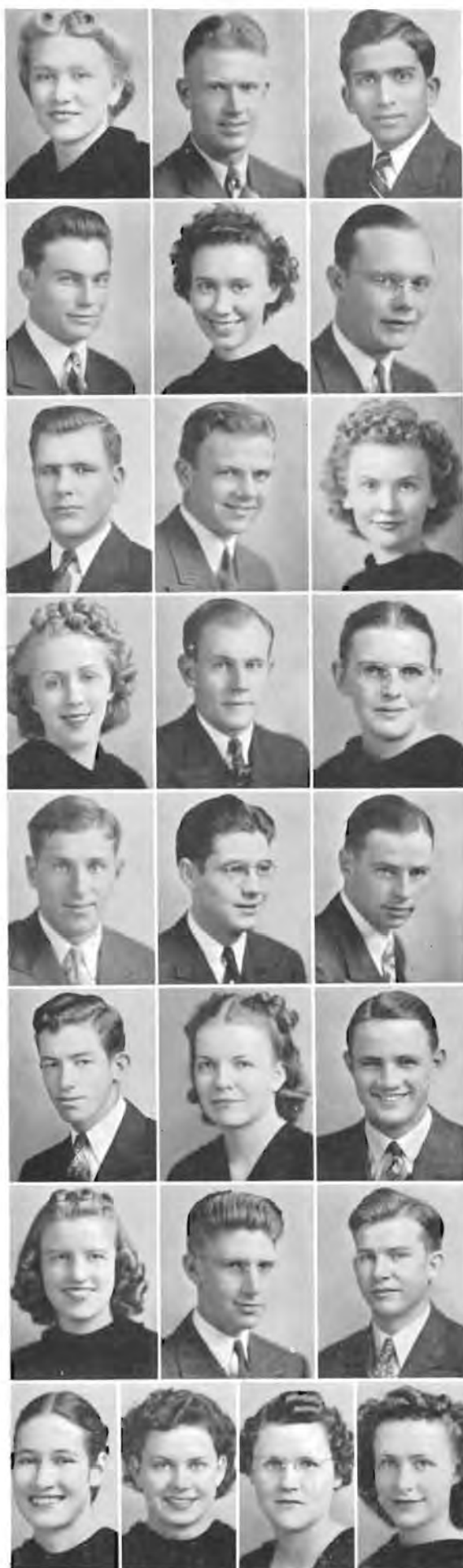
JIMMY PICKERING
Prairie, Kansas

MELVIN REEVES
Langdon, Kansas

BASIL ROARK
Winfield, Kansas



MEMORIAL LIBRARY
Southwestern College
WINFIELD, KANSAS 67156



MARGARET SEAL
Arkansas City, Kansas

V. O. SCHAPPEL
Winfield, Kansas

VICTOR SHERRING
Muttra, India

GALE SHIELDS
Winfield, Kansas

PHYLLIS SHOOK
Valley Center, Kansas

BOB SHRAUNER
Copeland, Kansas

GERALD SIBLEY
Lewis, Kansas

BRUCE SMITH
Pawnee Rock, Kansas

MARGARET SMITH
Larned, Kansas

WINIFRED SMITH
Bentley, Kansas

HUGH SNYDER
Vassar, Kansas

MARY STAUFFACHER
Leadville, Colorado

HAROLD STEVENS
Sterling, Kansas

BERNARD STINER
Winfield, Kansas

FRED SWOYER
Winfield, Kansas

HAROLD TREDWAY
Burden, Kansas

ANELLE TRUMBULL
Butler, Missouri

MARVIN TUCKER
Winfield, Kansas

DOROTHY VAN GUNDY
Osborne, Kansas

W. C. WARD
Moscow, Kansas

SAMUEL WARREN
Attica, Kansas

MARION WHEATLEY
Leadville, Colorado

MARY LOUISE WHITE
Pratt, Kansas

DOROTHY WILSON
Jetmore, Kansas

JEANNE YOUNG
Winfield, Kansas



Sophomores

OFFICERS

1st Semester

MARVIN BEAN

MARGARET STEVICK

MAXINE DIETRICH

2nd Semester

BILL SWARTZ

BILL DOTSON

GERRY VAN LANINGHAM

President

Vice-President

Secretary

BILL ALLEN
Winfield, Kansas

ANN ANDERSON
Wellington, Kansas

MARION ANDERSON
Potwin, Kansas

TOM BACKUS
Winfield, Kansas

RAY BAIRD
Attica, Kansas

MARJORIE BAXTER
Winfield, Kansas

MARVIN BEAN
Anthony, Kansas

ANNABEL BECK
Tulsa, Oklahoma

DOROTHY BIRCH
Wichita, Kansas

DAN BOLES
Wilmore, Kansas

RONALD BROWN
Pratt, Kansas

WARREN BROWN
Pratt, Kansas

RICHARD BRUMMETT
Winfield, Kansas

MARIE BURGESS
Harper, Kansas

BARBARA CAMPBELL
Lakin, Kansas

BILLY CARLTON
Udall, Kansas

RUSSELL CHAPIN
Red Rock, Oklahoma

ROBERT CHAVEZ
Lyons, Kansas

VIVIAN COMPTON
Denver, Colorado

MAXINE DIETRICH
Winfield, Kansas

ORA MAE DITAMORE
Nash, Oklahoma

CARLE DIX
Winfield, Kansas

BILLY DOTSON
Liberal, Kansas

MARGARET DURNIL
Sublette, Kansas

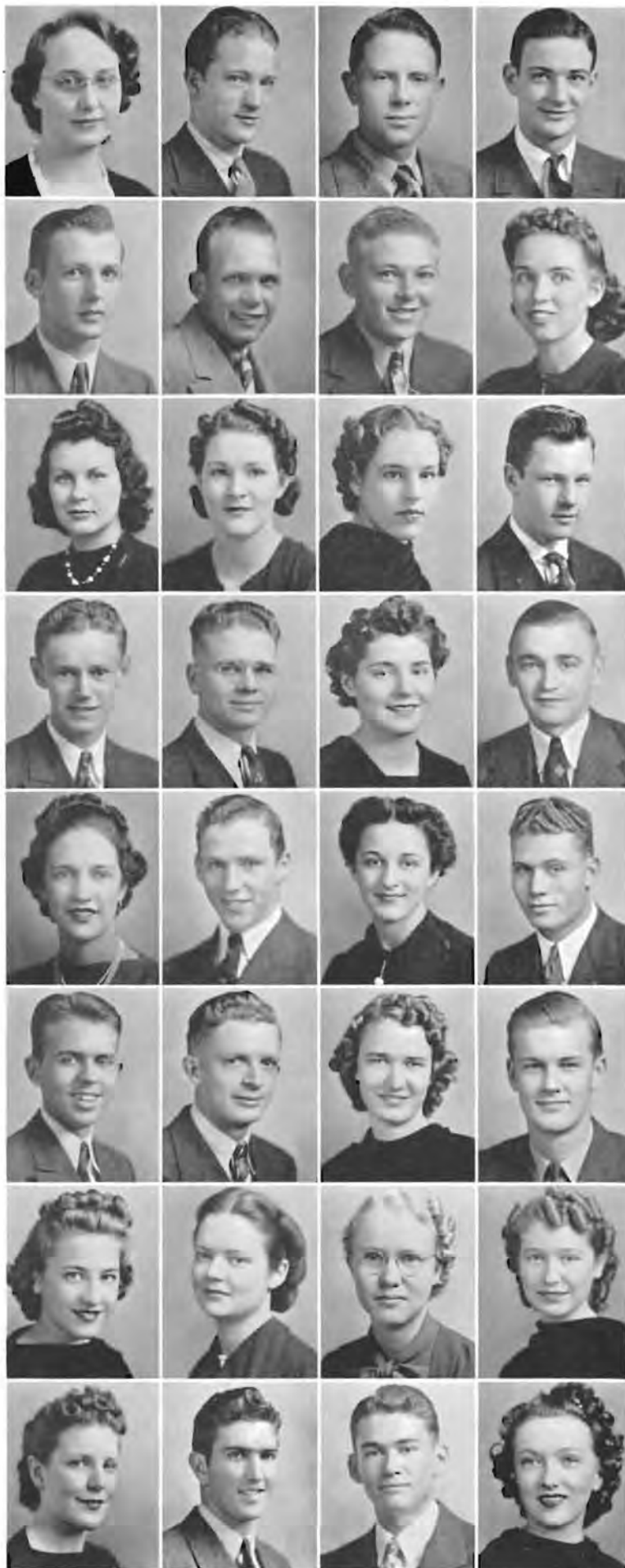
GALE ELDER
Winfield, Kansas

TED ERHART
Strafford, Kansas

GERTRUDE FOX
Cambridge, Kansas

KERMIT FRANK
Liberal, Kansas





LENORA FRY
Wichita, Kansas

YORK FUNSTON
Winfield, Kansas

WILLARD GERE
Kinsley, Kansas

WARREN HARTLEY
Winfield, Kansas

PAUL HENDERSON
Larned, Kansas

BEN HICKS
Elkhart, Kansas

CHARLES HINSHAW
Winfield, Kansas

MAXINE HOAR
Winfield, Kansas

BETTE HOLLIBAUGH
Winfield, Kansas

EDITH HOLLINGSWORTH
Wellington, Kansas

DOROTHY ALICE HOLMAN
Kinsley, Kansas

PAUL HOWLAND
Winfield, Kansas

HOMER HUDSON
Grenola, Kansas

KENNETH HULL
Wichita, Kansas

MARGARET HUMBURG
LaCrosse, Kansas

ROY HUNT
Liberal, Kansas

EVA JOHNSON
Hardtner, Kansas

FRANKLIN JOHNSON
Mt. Hope, Kansas

RUTH JOHNSTON
Norwich, Kansas

TED JONES
Winfield, Kansas

LOREN KING
Liberal, Kansas

JOE KISER
Douglass, Kansas

NORA KRAUSE
Plains, Kansas

FRED LAWRENCE
Winfield, Kansas

FRANCES LEHMAN
Deer Creek, Oklahoma

GLENNYS LENT
Isabel, Kansas

BETTY LEWIS
Bavaria, Kansas

JUNE LIMING
Elkhart, Kansas

ORINE LIPPARD
Newkirk, Oklahoma

PAT MALONE
Liberal, Kansas

DELMAR MARTIN
Milan, Kansas

LOREEN MATTHEW
Deerfield, Kansas

GLENN MATTHEWS
Marion, Kansas

MARGARET MATTHEWS
Wakita, Oklahoma

EUGENE MAXWELL
Rock, Kansas

MARY MARGARET McGHAY
Marion, Kansas

CARMEN McKNIGHT
Winfield, Kansas

MARY RUTH McNEIL
Winfield, Kansas

HAROLD METTLING
Lewis, Kansas

VIRGINIA PHILLIPS MILLER
Knowles, Oklahoma

DOUGLASS MOORE
Anthony, Kansas

GEORGE MORFORD
Newton, Kansas

CLIFFORD NANTZ
Winfield, Kansas

ALVIE NEWBERRY
Lyons, Kansas

JANE NEWLIN
Lewis, Kansas

THOMAS NOTESTINE
Oxford, Kansas

VIRGIL NUCKOLLS
Bentley, Kansas

VIRGINIA NURSE
Medicine Lodge, Kansas

HELEN PEDEN
Moline, Kansas

MAX PENNICK
Mulvane, Kansas

CORA LOU PERKINS
Hennessey, Oklahoma

MARJORIE PHILLIPPI
Argonia, Kansas

MARY KATHRYN POTTER
Conway Springs, Kansas

GEORGE REYNOLDS
Dodge City, Kansas

LORRAINE RIGGS
Hillsboro, Kansas

LEONA SARGEANT
Wichita, Kansas

PAULINE SCHLENZ
Preston, Kansas

HELEN SEEVERS
St. John, Kansas

MARJORIE SHAFT
Stafford, Kansas

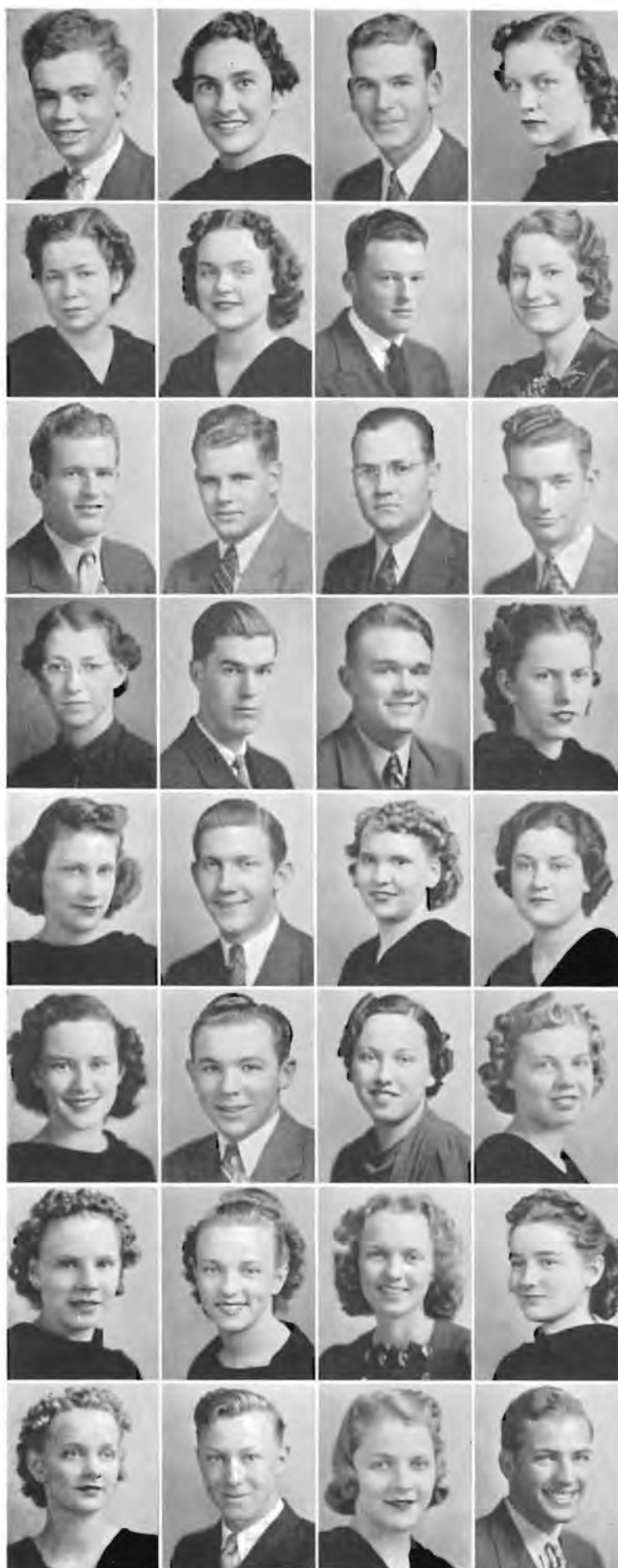
DORIS SMITH
Guymon, Oklahoma

MURIEL SMITH
Wakita, Oklahoma

ALLEN SNOOK
New Salem, Kansas

MARGARET STEVICK
Nowata, Oklahoma

JAMES STORY
Winfield, Kansas





BILL SWARTZ
Coffeyville, Kansas

GERALDINE VAN LANINGHAM
Winfield, Kansas



LEONARD WARREN
Attica, Kansas

THELMA WENDELBURG
Stafford, Kansas



LENA RUTH WHEELER
Conway Springs, Kansas

STEPHEN WHITE
Mulvane, Kansas



WILLIAM WILKINS
Winfield, Kansas

MARTIN WILLIAMS
Council Grove, Kansas



PAUL WILLIAMS
Marion, Kansas

CURTIS WILSON
Winfield, Kansas



HARRY WOMELDORF
El Dorado, Kansas

BUDDY WOOD
Liberal, Kansas



RUTH YERKES
Hutchinson, Kansas



EUGENE ADAMS
Oxford, Kansas

JOE ADAMS
Winfield, Kansas

MAX ALLEN
Sedan, Kansas

VICTOR ALLEN
Winfield, Kansas

FREDONIA ANDERSON
Winfield, Kansas

ROBERT AUSTIN
Kansas City, Missouri

CLARA BATY
Plains, Kansas

LOYD BAUGHMAN
Elk Falls, Kansas

EDWARD BAXTER
Macksville, Kansas

GERALD BECK
Tulsa, Oklahoma

MARY LOU BECK
Sterling, Kansas

MAXINE BEEMAN
Winfield, Kansas

BETTY BIRCHENOUGH
Anthony, Kansas

JAMES BLOSS
Manitou Springs, Colorado

DOROTHY BOWLBY
Winfield, Kansas

WANDA BROADIE
Winfield, Kansas

KENNETH BROTHERS
Winfield, Kansas

GROVER BROWN
Halstead, Kansas

FRANCES BUCHANAN
Larned, Kansas

MADELINE BUCK
Larned, Kansas

BARBARA CAVE
Oxford, Kansas

ALBERT CAYWOOD
Wichita, Kansas

WILMA CHAPMAN
Ashton, Kansas

DWIGHT COUCH
Winfield, Kansas

MARCIELLE COUNTRYMAN
Winfield, Kansas

LEO COX
Oxford, Kansas

FRANCES CRANE
Colorado Springs, Colorado

HOWARD CROW
Alamosa, Colorado

Freshmen

OFFICERS

1st Semester
President EDWARD JOHN
Vice-President BYRON WHITE
Secretary DOROTHY DUNBAR

2nd Semester
BYRON WHITE
RONALD STITT
JEAN DILWORTH





LOU DALBOM
Viola, Kansas

EILEEN DAUGHENBAUGH
Burdett, Kansas

KATHRYN DAUGHENBAUGH
Burdett, Kansas

HERBERT DAVIS
Oxford, Kansas

KATHARINE DAYTON
Haviland, Kansas

HAROLD DEETS
Garfield, Kansas

BETTY LOU DIETERICH
Walton, Kansas

MAUDINE DILLEE
Sun City, Kansas

JEAN DILWORTH
Winfield, Kansas

DOROTHY DUNBAR
Winfield, Kansas

LOREN DUNCAN
Hazelton, Kansas

DALE DUNLAP
Rose Hill, Kansas

MAURINE DUPONT
Pratt, Kansas

JAMES EARSOM
Winfield, Kansas

ROLAND EARSOM
Winfield, Kansas

MARGARET EBRIGHT
Independence, Kansas

ANN EWING
Conway Springs, Kansas

LEO FILE
Ashland, Kansas

LAURA FRANKLIN
Liberal, Kansas

MAYELLA FRANKLIN
Winfield, Kansas

RUSSELL FREDERICK
Wichita, Kansas

LAURA LEE FREEBURG
Halstead, Kansas

PRICE FUGIT
Wichita, Kansas

DOROTHA FULK
Winfield, Kansas

JOHN GAREY
Stafford, Kansas

LOUIS GOSTING
Kildare, Oklahoma

LAWRENCE GUY
Winfield, Kansas

HELEN HALL
Jetmore, Kansas

STANLEY HAMMER
Cambridge, Kansas

JOY HANKINS
Everett, Massachusetts

GLENN HARNDEN
Attica, Kansas

JOHN HARRISON
Medicine Lodge, Kansas

RUTH HA
Hutchinson

RHEBA H
Wellington

VERNAN
Anthony, K

LORETTA
Attica, Kan

NANCY
Winfield, K

ROBERT J
Ulysses, Ka

ELDEN KID
Canton, Ka

KARL KRE
Halstead, K

RUTH HARRISON
Hutchinson, Kansas

KENT HATFIELD
Kinsley, Kansas

ESTHER HAWKINS
Oxford, Kansas

VIRGINIA HEDRICK
Anness, Kansas

RHEBA HELM
Wellington, Kansas

LEE HENDRICKS
Beaver, Oklahoma

BILL HENDRICKSON
Winfield, Kansas

KENNETH HIEBSCH
Zenda, Kansas

VERNANIECE HIVNER
Anthony, Kansas

VERNE HOAR
Winfield, Kansas

FREDA HOLT
Atlanta, Kansas

LEROY HOYT
Attica, Kansas

LORETTA HOYT
Attica, Kansas

EMMA JANE HUDSON
Winfield, Kansas

WAYNE HULL
Fredonia, Kansas

LOIS INGRAM
Spivey, Kansas

NANCY JARVIS
Winfield, Kansas

EDWARD JOHN
St. John, Kansas

LUCILLE JOHNSON
Copeland, Kansas

CLIFFORD JONES
Kismet, Kansas

ROBERT JONES
Ulysses, Kansas

MERLE JUNE
Udall, Kansas

ASHER KANTZ
Wichita, Kansas

KEITH KERR
Winfield, Kansas

ELDEN KIDDOO
Canton, Kansas

CECIL KING
Winfield, Kansas

RUTH KISER
Douglass, Kansas

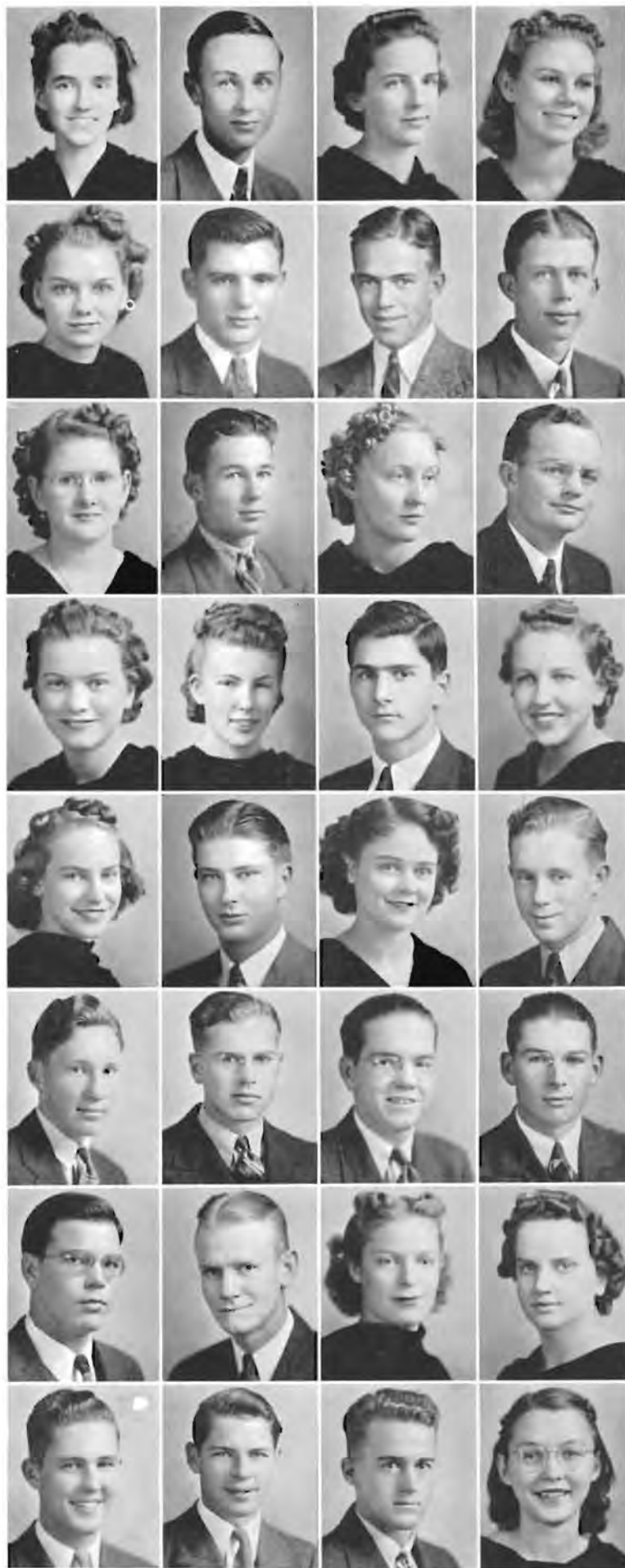
CLARICE KITTELSON
Winfield, Kansas

KARL KREHBIEL
Halstead, Kansas

JAMES KREIE
Halstead, Kansas

HAROLD KRELL
Oxford, Kansas

NINA LAMOREE
Winfield, Kansas





JOHN EVA LAWRENCE
Caldwell, Texas

ROBERT LAWRENCE
Oxford, Kansas

ALBERT LITTLE
Richfield, Kansas

MARJORIE LITTLE
Conway Springs, Kansas

GEORGE MacKAY
Haviland, Kansas

ANNA LAURA MACKEY
Caldwell, Kansas

MAJORIE MATTHEWS
Wakita, Oklahoma

MARJORY McCOLLOM
Kismet, Kansas

JAMES McCUE
Boston, Massachusetts

ELINOR McINTOSH
Fulton, Kansas

MARIAN McNABB
Winfield, Kansas

LAVERNE McNUTT
Belpre, Kansas

JANIS McPEEK
Winfield, Kansas

DOROTHY MEAD
Oxford, Kansas

MARY ELLEN MEADOR
Larned, Kansas

ROBERT MERRIAM
Winfield, Kansas

MAUDENE MESSMER
Norwich, Kansas

MARY RACHELLE METZ
Caldwell, Kansas

AZALEA MILLER
Woodward, Oklahoma

ROSEMARY MILLER
Winfield, Kansas

PHIL MOORE
Wellington, Kansas

EVA MORRIS
Hugoton, Kansas

CECILE MOSSMAN
Caldwell, Kansas

HENRY MURRAY
Marion, Kansas

BILL NISBET
Winfield, Kansas

GERALD NOLAN
Winfield, Kansas

MAURICE NORTON
Johnson, Kansas

EARL NOSSAMAN
Pawnee Rock, Kansas

JESS OLIVER
Kansas City, Missouri

ROBERT ORAHOOD
Winfield, Kansas

CLIFFORD PAINTER
Kansas City, Missouri

CHARLES PALMER
Liberal, Kansas

JOHN PAL
Abbyville, K

JA
Wi

MARJORIE
Winfield, Kan

CA
Win

VENETA RE
Sterling, Kans

JO
Stra

RUTHE ROB
Larned, Kansas

J. R
Mc

ANITA RYN
Norwich, Kan

JE
Che

MARION SE
Pretty Prairie,

MA
Win

ELSIE SHUM
Plains, Kansas

FRA
Arka

WALTER SM
Greensburg, K

HAT
Win

JOHN PALMER
Abbyville, Kansas

JAMES PETERSON
Winfield, Kansas

PEARL PICKENS
Haileyville, Oklahoma

HARRY PINNICK
Meade, Kansas

MARJORIE PLANK
Winfield, Kansas

CARL PRIEST
Winfield, Kansas

MARY EVELYN PROCK
Attica, Kansas

RAYETTA RAGAN
Wichita, Kansas

VENETA REIMER
Sterling, Kansas

JOYCE RESLER
Strong City, Kansas

ADRIAN RICHARDSON
Murdock, Kansas

JOE RINEHART
Kismet, Kansas

RUTHE ROBBINS
Larned, Kansas

J. R. ROBERTS
McAllen, Texas

DORIS ROBINSON
Winfield, Kansas

BRYCE RODERICK
Attica, Kansas

ANITA RYNIKER
Norwich, Kansas

JEANETTE RYNIKER
Cheney, Kansas

RACHEL SCHEMAHORN
Milton, Kansas

MARGUERITE SCHRIVER
Halstead, Kansas

MARION SEYB
Pretty Prairie, Kansas

MARGARET SHEEL
Winfield, Kansas

ROBERT SHEPHERD
Winfield, Kansas

DEAN SHIFLET
Winfield, Kansas

ELSIE SHUMAN
Plains, Kansas

FRANCIS SIMPSON
Arkansas City, Kansas

DON SMITH
Wichita, Kansas

JAMES SMITH
Wichita, Kansas

WALTER SMITH
Greensburg, Kansas

HAROLD SNYDER
Winfield, Kansas

JOYCE SOOTER
Winfield, Kansas

KENNETH SPICER
Hazelton, Kansas





IVAN SPRINGER
Lyons, Kansas

MARGIE STANLEY
Cunningham, Kansas

WESLEY STEIN
Halstead, Kansas



LAWRENCE STEVENS
Sterling, Kansas

BETTE STEVICK
Nowata, Oklahoma

OLIVE STINER
Winfield, Kansas



RONALD STITT
Liberal, Kansas

WAYNE STOOPS
Yale, Oklahoma

RALPH THORNE
Sedan, Kansas



DOROTHY TONER
Manchester, Oklahoma

OLIN TUCKER
Winfield, Kansas

GERRIE TUTTLE
Winfield, Kansas



JAMES VORAN
Augusta, Kansas

MAXINE WAGGONER
Belle Plaine, Kansas

GEORGE WAGNER
Argonia, Kansas



ERVA JANE WALKER
Winfield, Kansas

HERMAN WANDMACHER
Merrick, New York

BYRON WHITE
Mulvane, Kansas



RUTH JO WILLMING
Marion, Kansas

CHRISTINE WRIGHT
Adair, Oklahoma

PATTY YORKE
Winfield, Kansas



PAUL YOUNCE
Anthony, Kansas

CATHRYN YOUNG
Protection, Kansas

LEROY ZAHN
Jetmore, Kansas

IDA BELLE ZIMMERMAN
Kiowa, Kansas

Speci

MRS. FAY
Winfield

GERALD E
Winfield

GEORGE
Leon

RAY HENR
Kiowa

FLORENCE
Dodge City

MALETA
Copeland

BESSIE RY
Elkhart

Special and Second Semester Students

MRS. FAYE ALLEN
Winfield

ROBERT AMES
Liberal

HOMER BAKER
Kingman
CALISTA BENDER
Plains

GERALD BEACH
Winfield

WYATT COOPER
Fowler

MARIAN COYLE
Winfield
ROBERT DAVIDSON
Hamilton

GEORGE ECKEL
Leon

KENNETH FRANKLIN
Plevna

JACK GILLILAND
Oxford
MELVIL HANNA
Winfield

RAY HENRY
Kiowa

JOE KEYES
Sawyer

GEORGIE LIMING
Elkhart
CHARLOTTE LOUCKS
Copeland

FLORENCE MAE MILLER
Dodge City

DOROTHY NELSON
Winfield

HELEN JEANNE NICHOLS
Winfield
DICK NORTON
Johnson

MALETA NUSSER
Copeland

LAWRENCE OTEY
Winfield

ELTON PARSONS
Cheney
FRANK POLITZER
Valley Stream, New York
JACK RICKARDS
Wichita

BESSIE RYMAN
Elkhart

EVERETT SALSER
Winfield

DRAYTON SCHAEFER
Valley Stream, New York
NOEL WALLACE
Benton
WENDELL WILLIAMS
Oxford



"This is the Way We Go to School—"

and if not always "so early in the morning", the efforts continue far, far into the night. There are classes where learned professors impart learned theories about the "three R's" and their alphabetical successors to students. Then there are the laboratories where students put into practice what their professors preach.

Southwestern's physical science department has more equipment per student than do those in most schools of comparable size. Classes in glass blowing permit the construction of many intricate instruments for scientific experiments. The foods laboratory comes in on the ground floor of the science building and is the scene of more appetizing experiments. Model luncheons and dinners are served in the laboratory dining room to which melody-butchers and breakers and hydrogen gas makers all seek invitations. Refuge of collegians on closed nights, mecca of research students and the common home of the Encyclopedia Britannica and the New Yorker, the college library is a popular study center. Miss Graham's Little Theatre is a rare harmony of orphaned collector's pieces, books and that indefinable spirit of the stage. Here aspiring Thespians direct and produce plays and study dramatic techniques. Close study of figures is made in domestic as well as business economics, as witness the sewing laboratory, complete even to its own modeling stage and a loom.

• Chemistry • Foods • Physics • Library • Little Theatre • Sewing



truly
off C
ment
thetic
therap
Asso
S
libera
certifi
Exami
M
as ad
R.N.,
Page 55



William Newton Memorial Hospital

Thirteen years ago there was opened to the citizens of Winfield and surrounding territory an institution truly for the promotion of human welfare. This hospital, beautifully situated on Fifth Street just three blocks off College, was the gift of William Newton, who willed to the city funds for the construction and equipment of the building. The structure is modern and fireproof. It has a fifty-bed capacity, and the best in sympathetic, courteous medical treatment is offered all who come for examination or treatment.

The equipment is complete for diagnostic X-ray, fluoroscopy, diathermy, therapeutic light and X-ray therapy, medical, surgical, orthopedic, dietary and obstetrical care, and laboratory tests and analysis.

This hospital is fully approved and accredited by the Kansas Hospital Association, the American Hospital Association, and the American College of Surgeons.

Southwestern College, in affiliation with Newton Memorial Hospital, offers a five-year combination liberal arts and nurse-education curriculum leading to the degree of Bachelor of Arts from the college and a certificate of nursing from the hospital. The School of Nursing is registered by the Kansas State Board of Examination and Registration of Nurses as an accredited school of nursing.

Miss Dorothy Hale McMasters, R.N.; M.A.C.H.A., displays distinct executive ability and efficiency as administrator in the capacity of superintendent of this well established institution. Miss Gladys C. Harmon, R.N.; B.S., is director of the School of Nursing.



Standing: E. W. McNeil, Ralph Stuber, Joseph E. Coe, W. G. Anderson, Henry Gott, W. W. Owen, Nelson S. Gardner, Walter Dellinger, Allen Felt, Henry Kibbee, Chas. A. Kitch

Seated: I. D. Harris, R. L. George, Wm. T. Ward, O. A. Boyle, Albert E. Kirk, Frank E. Mossman

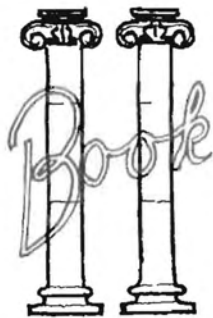
Not Pictured: J. C. Fisher, Paul D. Womeldorf, L. C. Baker, P. J. Sonner, C. M. Gray, Mrs. Ella Demoret, Bert Dubois, Mrs. Edith Archer, D. H. Switzer, Roy Derr, T. M. Deal, Wm. Grimsley, R. B. Christy

Trustees

It was "back in '85" that the plan of Southwestern College was conceived at the Southwest Kansas Conference of the Methodist Episcopal Church, which decided to establish an institution of higher learning within its boundaries. The charter members of the Board of Trustees elected that year were six members of the conference and three laymen. One of their first and most commendable tasks was the selection of Winfield as the location for the college. Since that time, improvement of the college and campus has advanced steadily through prosperous and through trying years.

At the present time Southwestern is a fully accredited college. Its grades and credits are accepted by all colleges and universities and are recognized by the State Department of Education. S C is also accredited by the North Central Association of Colleges and Secondary Schools as a degree-granting institution. The School of Fine Arts is a member of the National Association of Schools of Music and accredited by that organization.

The trustees are a group of true educators who enjoy and appreciate their responsibilities. It is to these Builders that we, as students, are indebted for the opportunities afforded us in a widely recognized denominational college.



Laurels and Liniment

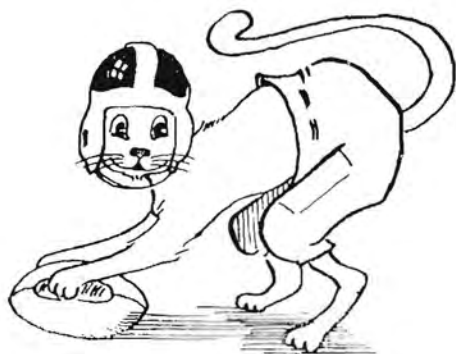


her,
ois,

Kansas
arning
pers of
infield
readily

ted by
edited
The
hat or-

to these
denom-



• The tradition of the Jinx is no passing fancy; again it brings victory to S C



Lillian Cloud
Director of Women's Athletics

Bill Monypeny
Basketball Coach

Don Cooper
Director of Athletics and
Football Coach

Claire Seay
Track Coach and Instructor
Men's Physical Education

Proof of the high standing of the Southwestern College athletic department is fully demonstrated by the fact that for six years Southwestern basketball teams have either won a clear title or shared top honors in Central Conference competition, and that in tennis, first in singles and both first and second in doubles went to S C players last year.

Southwestern competes with other schools in basketball, football, tennis, track and golf. There is also much emphasis on intramurals for both men and women. In the past three years basketball teams from Southwestern have made a trip to Mexico to compete in the International Tournament, a trip to Chicago, playing teams from three states on the road, and twice attended the thirty-two team National Tournament at Kansas City. This spring the track team attended a meet in Fort Worth.

Only words of highest praise can describe those who are responsible for the full, varied program offered. Under the guidance of director of athletics Don Cooper, the financial affairs of the department have been expertly handled. Cooper has been with S C for six years, three of which he has been athletic director and head football coach.

A new-comer to S C, Claire Seay, exhibits great enthusiasm for his work. Working as line coach he instilled much pep into the football team. Seay is head track coach, instructor of physical education for men and director of men's intramurals.

As freshman coach, Ray Henry added a great deal of support by overseeing the new football hopefuls. Henry is a former S C football star.



Seay, Cooper, Henry

Bill Monypeny, director of athletics 1926-37 and absent from the field only when other duties necessitated it from 1937 to 1939, returned to coach a team of sophomores to the three-way tie Central Conference basketball championship.

A woman has the last word. And Lillian Cloud is the last word in women's athletics. Director of girls' physical education, intramurals and WAA, an ardent Southwesterner, "Cloudy" is loved by all.

On the Gridiron

Although the 1939 football season was not a marked success on the score board, there was excellent teamwork and good football played throughout.

The schedule opened at College of Emporia. Although S C outplayed them, C of E held the Coopermen to a 0-0 tie. After a game with the Shockers on the W U field, the Builders returned with a moral victory, despite a 32-0 loss, having held the Wichita team to less than half the 1938 score.

In the first home game McCoy, Oliver, Dillman and Austin each scored against the Bacone Indians for a 28-0 victory. Dillman retrieved an apparently dead ball and traveled 65 yards for the goal. Emporia Hornets' backfield managed 42 points while their line held S C scoreless.

Southwestern entered the Sterling game without Oliver and Dillman. Simpson, in his first game as center, did an excellent job, but S C lost 26-0. Austin scored the team's first conference touchdown in the 43-7 loss to Hays.

Top Row: Henry, Winters, Guy, Doty, Oliver, Painter, Adams, Morford, Cooper, Frank, Hicks, Simpson, MacKay, Roderick, Nuckolls, Seay

Middle Row: Stevens, Rohl, Dillman, Marine, McCoy, Young, Martin, Gillespie, Malone, Whitesell, Williams

Bottom Row: Montgomery, Harnden, Shields, Gilliland, Nolan, Krell, Allen, Austin, Roberts



Opposite Page

First Row

Austin, back, F.
Dillman, cntr., J.
Doty, end, J.
Frank, tkle., So.
Gillespie, end, Sr.
Guy, back, F.
Harnden, back, F.

Second Row

Hicks, end, So.
Malone, back, J.
Marine, end, Sr.
Martin, tkle., Sr.
McCoy, back, J.
MacKay, guard, F.

Third Row

Montgomery, back, F.
Nuckolls, back, So.
Oliver, back, F.
Painter, end, F.
Palmer, back, F.
Roderick, guard, F.
Rohl, guard, Sr.

Fourth Row

Morford, tkle., So.
Simpson, back, F.
Stevens, back, J.
Whitesell, back, Sr.
Williams, guard, J.
Winters, back, F.
Young, tkle., Sr.

ge
Row
y, F.
t, J.
l.
So.
nd, Sr.
F.
ck, F.
d Row
So.
ck, J.
t, Sr.
y, Sr.
ck, J.
ard, F.



Row
y, back, F.
ck, So.
k, F.
l, F.
k, F.
uard, F.
y, Sr.
n Row
le., So.
ck, F.
ck, J.
back, Sr.
uard, J.
ck, F.
t, Sr.





- Spell-binding spectacle under the floodlights
- "For men only"—husky, red-corpuscle ones
- "Music hath charms"—they hope

The Builders lost a heart-breaking Homecoming game, 13-7. In the last seconds of play an alert McPherson player ran the ball over, following a blocked place-kick near the goal line. It won the game for the Bulldogs, who were outplayed the entire time.

A 45-13 loss at Pittsburg featured heavy mud and drizzle and the kicking of Winters and passing of Stevens. Winters averaged 38 yards punting and Stevens completed 16 of 19 passes, sharpshooting on a dry field.

At St. Benedict's S C scored first and led 7-6 at the quarter, tied at 20-all in the third quarter, but lost 33-20 to the powerful "Lynch & Co." The Oklahoma Baptists of Shawnee won 38-0 in the final game of the Builders' schedule.

Among outstanding players were McCoy, Austin, Stevens, Gillespie, Roderick and Painter. Dillman and McCoy were elected co-captains for the 1940 season.

The Jinx Wins Another Crown

Winning basketball championships is an old Southwestern tradition upheld by this year's team. For the past five years S C has either held or shared the C I C crown. Scorning pre-season calculations of veteran basketball critics who relegated them to the cellar, the Builders staged a "down-to-the wire" fight to make it six years in succession.

Facing the difficult job of building a team from a squad made up largely of freshmen and sophomores, Coach Monypeny began practice early in October and scheduled several tough pre-conference games to give his boys experience. Southwestern lost 23-22 to its old rival, Warrensburg, and dropped a 33-24 game to the Edmond Oklahoma Teachers. In the return game with the Warrensburg Mules, S C lost a well-played game, 30-24.

After these defeats, the Builders tightened their belts and entered the Tulsa tournament with fire in their eyes. In the first game they defeated Alva Oklahoma Teachers in two over-time periods, scores at the end of each reading 42-42 and 44-42. Breezing past Springfield Missouri Teachers, 37-25, the C I C champs beat the tall, rangy East Texas Teachers from Commerce 44-36 in the semi-finals, Stevens scoring 22 points. The finals proved as exciting as the first game. The Builders won over the East Central Teachers of Ada, Oklahoma, 43-42 in the last three seconds of play when the referee ruled a basket for S C as an Ada player hit the net on a Southwestern shot. Fugit won the trophy for "most valuable player" at the tournament.

In the first game of the Topeka Sunflower Tournament S C romped over Colorado Teachers of Fort Collins, 54-36. A "let-down" for the second game gave Washburn a 28-23 victory. On the following night the Monypeny crew came back to win third place honors from New Mexico Miners, 37-36.

Because of "flu", the Builders got a bad start on the conference, losing the first two games to Pitt and Wichita. The Gorillas won 46-36 on the S C maples. At Wichita, Southwestern was "off" and lost 24-14, the Purple scoring only one basket the first half.

The team rested from conference duty to trounce Mexico Y M C A 45-33 during the "good will tour" of the Mexico City team. Taste of victory must have been sweet, for the Builders took to the road and, playing inspired ball, downed Emporia 40-31 as Hart starred his "hook" for 15 points. Two nights later at Hays a tired first team received much help from the second five in a 37-36 win over the Tigers.

Physical Education Classes

- Badminton
- Boxing
- Archery
- Volleyball
- Ping-pong





OPPOSITE PAGE

49	Dix	g.	So.
44	Fugit	c.	So.
47	Hart	c. & f.	So.
45	McCoy	g.	J.
50	Moore	c.	F.
46	Porter	g.	Sr.
40	M. Tucker	f.	J.
43	O. Tucker	f.	So.
48	D. Smith	g.	F.
42	R. Smith	c.	Sr.
41	Stevens	f.	J.

Monypeny, coach



Top Row: Fugit, Moore, Smith, Zahn

Middle Row: Hart, O. Tucker, McCoy, Smith, Deckert

Bottom Row: Cooper, Porter, Dix, Stevens, M. Tucker, Monypeny

Still burning from the epithet, "cellar club", S C poured the ball through the hoop until it looked like a leather belt and won a 56-44 victory over the St. Benedict's Ravens. But the pace was fast, and the "green" team lost, 36-31, to a "hot" Hays team. Led by the Tuckers, "O" and "M", S C won the return Benedictine game 39-37.

Highlighting conference play was the 50-27 drubbing given the Shockers. With revenge the byword, a determined squad beat the Wichitans by the largest margin scored in any conference game this year. There followed a 37-25 loss to Pittsburg and a 39-31 victory over a scrappy Emporia team, ending conference competition for the Builders this season.

At the National Intercollegiate Tournament at Kansas City the Builders scored a 36-30 win over Loras College. Against the Glenville, West Virginia team, third place winners of '39, a last thirty seconds goal by M. Tucker won the game, 38-37. Hamline, Minnesota, put S C out of the tournament, 38-33.

Lettermen are: O. Tucker, So; M. Tucker, J; Fugit, So; Dix, So; D. Smith, F; McCoy, J; Stevens, J; Hart, So; Moore, F; R. Smith, Sr; and Porter, Sr.



TRACK

Back Row: Seay, Montgomery, Malone, Reeves, Martin, Shepherd, Story, Brothers, Austin

Middle Row: Kavanaugh, Hinshaw, Rickards, Gilbert, Caywood

Front Row: Painter, Nolan, Nossaman, Brown, Roderick, Adams

TENNIS

Henry, Swartz, M. Tucker, Forrester, O. Tucker, Brummett

INTRAMURALS

Back Row: Gerstberger, Countryman, Norton, Harnden, Ott, Stevens

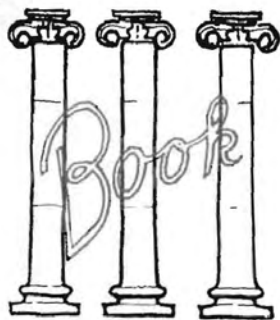
Front Row: Mettling, Moore, Brown, Sibley, Pinnick, Lallement

Intramurals hit a new high this year under the direction of Claire Seay. In basketball about 125 men on ten teams participated. A schedule of 45 games was run off, with the "Country Club" team victorious. Harold Stevens won the ping-pong crown from a field of 32. Plans have been made for track meet, tennis, golf, horseshoe and boxing tournaments.

Under Seay's direction, track is being revived. At the Southwestern Exposition Track and Field Meet at Fort Worth, Montgomery placed third in the 220-yd. dash, Gilbert tied for third in high jump and Kavanaugh won the 100-yd. dash. The team won the difficult Tonkawa meet. Several meets have been arranged for the remainder of the season.

Tennis, under the tutoring of Ray Henry, was very successful in the 1939 season. Olin Tucker won the central conference crown in singles and teamed with Bill Swartz to cop the doubles championship; Forrester and Brummett won second in doubles.

And so the game is ended, with a rousing cheer for the 1939-40 Builder teams!



Song of the Gavel





• Southwestern, a miniature democracy in which youth learns to work and play in close harmony



Fourth Row: Dillman, Swartz, Leftwich, Gerstberger, Chapin, R. Smith, Eckel, Tredway, Marine, Moots, Dungan
 Third Row: Birchenough, Green, Brownlee, Patton, White, Benton, M. Dieterich, McNeil
 Second Row: Dr. Albright, Jarvis, Durnil, M. Smith, Nurse
 First Row: Beck, Brown, B. Dieterich, Dalbom, Zahn, Bean

Student Council

At seven o'clock every political Thursday evening this year at Southwestern, there came to order a representative organization of students to confer, refer to and defer the current campus problems. In keeping with the president's platform, the council managed above all else to adjourn on time. The student council is a self-governing group "taken unto itself" by the student body, membership consisting of six members from each class elected by the class for a term of two semesters. The big responsibilities of the council center about the annual allocation of the student activity fees, the making of special honor awards and action on special student or school projects throughout the year.

This year Clark Moots served as president of the council and student body. His faithful assistant was Richard Leftwich, vice-president and chairman of the assembly program committee. These officers and the cheer leaders are chosen at the annual spring student election, which has advanced beyond the "Machine Age". The 1940 council proudly joins hands with C. O. Brown and his crew for dressing up the band. It was the council, too, that stimulated the memorable Homecoming parade. In fact, almost any student policy or function at Southwestern may be blamed or attributed to this unselfish, enterprising group of legislators. Leftwich, Moots, White and Smith composed the executive committee, and Mary Ellen Brownlee and Mary Ruth McNeil were the council secretaries.

Student Christian Movement

Our S C M has a very real place on the campus. At the opening of school it provides "big sisters" for freshman girls, sponsors the all-school "sing" on the Seventy-Seven Steps and also the memorable watermelon feed and snake dance on the first Saturday night of the school year. Through its friendly social program Southwesterners recognize more fully the democratic spirit for which this campus is known.

All students are invited to become members of the S C M and to take part in its weekly meetings. In these meetings, which usually take the form of lectures or student panel discussions, subjects of universal interest ranging from personal relations to the international situation are brought up for study. An increased budget this year made it possible for the organization to bring nationally known speakers to the campus. Among these was John Nevin Sayre, international chairman of the Fellowship of Reconciliation.

The Student Christian Movement also takes part in state and national activities. In 1940 delegates were sent to the State S C M Conference at Pittsburg, and each year a number of Southwestern students attend the Estes Park Conference. So much interest in this conference has been manifested that an Estes Cooperative Club was organized to help students earn part of their expenses for the trip. The local group is also a contributor to the Far Eastern Student Fund.

Southwestern acknowledges the wholesome and worthwhile work of S C M on its campus.

Standings: King, Martin,
Hiebsch, Shumate, Miss
White, Womeldorf

Franklin, Gee, Dieterich, Smith,
McNeil, Gardner, Marg.
Smith

Seated: B. White, McGinness,
Matthews, Dayton, Shook,
Beck, Gilbert, S. White,
M. L. White, Brown



Student Christian Movement

Our S C M has a very real place on the campus. At the opening of school it provides "big sisters" for freshman girls, sponsors the all-school "sing" on the Seventy-Seven Steps and also the memorable watermelon feed and snake dance on the first Saturday night of the school year. Through its friendly social program Southwesterners recognize more fully the democratic spirit for which this campus is known.

All students are invited to become members of the S C M and to take part in its weekly meetings. In these meetings, which usually take the form of lectures or student panel discussions, subjects of universal interest ranging from personal relations to the international situation are brought up for study. An increased budget this year made it possible for the organization to bring nationally known speakers to the campus. Among these was John Nevin Sayre, international chairman of the Fellowship of Reconciliation.

The Student Christian Movement also takes part in state and national activities. In 1940 delegates were sent to the State S C M Conference at Pittsburg, and each year a number of Southwestern students attend the Estes Park Conference. So much interest in this conference has been manifested that an Estes Cooperative Club was organized to help students earn part of their expenses for the trip. The local group is also a contributor to the Far Eastern Student Fund.

Southwestern acknowledges the wholesome and worthwhile work of S C M on its campus.

Standing: King, Martin,
Hiebsch, Shumate, Miss
White, Womeldorf

Franklin, Gee, Dieterich, Smith,
McNeil, Gardner, Marg.
Smith

Seated: B. White, McGinness,
Matthews, Dayton, Shook,
Beck, Gilbert, S. White,
M. L. White, Brown





Back Row: K. Hull, Grossman, Springer, Pickens, Martin, Liming, King, Franklin, G. Reimer, Akers, Wilson, Holman, Mitchell

Middle Row: Walker, V. Reimer, Compton, Sherring, Dunlap, Doty, Shaft

Bottom Row: Warren, McGinness, Krause, Sargeant, Lalliment, McNeil



Back Row: Hinshaw, Kittelson, McNutt, Groves, Wright, Hall, Smith

Middle Row: King, Miss Cloud, Bray, Matthews

Bottom Row: Youle, Baxter, White, Dean



Back Row: S. White, Ger, Womeldorf, Eckel, Voran

Middle Row: Countryman, D. Smith, McNeil, Mur. Smith, Miller, Marg. Smith

Bottom Row: McIntosh, Matthews, Resler, Sherring, White



Soprano: Yerkes, VanGuth, Tobias, Applegate, Berry, Trumbull, Austin, Beck, Warram, M. Funston, Mrs. Gibson, Lewis, Ditamore, Plank, M. Allen

Alto: Mrs. McNeish, Mrs. Leona, M. Trumbull, M. McIntosh, E. McIntosh, M. Smith, Dunlap, Mrs. Parker, Frey, Nicholas, Johnson, Seal, Franks, Miller

Bass: Maurer, Congdon, Fr. Kiddoo, Wycoff, Henderson, Erhart, Harrison, S. Funston, Bean

Tenors: Krell, Wandmacher, O'Neil, White, W. San, Birchenough

Cosmopolitan Club

A genuine example of the democracy which characterizes the Southwestern campus is this organization composed of foreign-born and American students. Through its projects and social activities, the rich contributions of cosmopolitan cultures are merged with our own, and an appreciative understanding between races is fostered.

The study and discussion of international affairs constitutes much of the program material. Impetus is given this movement by the reports of outside speakers and local delegates to the national convention of the organization. This year Miyuki Masuda and Barbara Grossman, presidents of the club, headed a well-balanced program which included a "Wimpy Supper", several informal parties and a spring banquet, as well as lectures.

Builderettes

So the Jinx needs a facial and whisker-trim? Well, it won't be for long, because the peppy Builderettes will soon make their salaams and get him ready as official greeter to all who go up and down "seventy-seven". And these loyal W A A girls are just as enthusiastic in their activity and support of Builder athletics as they are in caring for the mascot. Membership is composed of participants in major and minor sports, and Rachel Bray served as president, Mary Louise White as vice-president, and Carol King as keeper of the cash and minutes. Under the sponsorship of Miss Cloud, the girls were hosts at an invitation volleyball tourney, made a field trip and enjoyed informal parties throughout the year.

College Epworth League

As a definite part of the educational program of Grace Methodist Church, the Epworth League meets each Sunday evening for an hour of fellowship and study, helping students to build well-rounded lives. Outstanding personalities in the community and on the campus are invited as speakers at these meetings.

During matriculation week in the fall, the League sponsors a ghost walk, long remembered event which is the beginning of many friendships. In the spring they end the year's program with an outdoor meeting around the campfire, where games, songs and a short period of meditation combine the many phases of the League's work.

First Methodist Church Choir

In the midst of the mad rush of school and miscellaneous routine duties, there is always time for this congenial group to meet each Wednesday evening at First Church for choir practice. Under the able direction of Miss Ida Clawson Hunt, the choir presents anthems and special music each Sunday morning to all who come to hear the fine sermons of the Reverend Kitch.

Despite the intensive work required for continuous development, the choir and "Teacher" enjoy the time spent together, and parties and taffy pulls during the year make membership still more enjoyable. The highlight of each season is the special Christmas program.



Miss Edith Dielmann
Director

Standing

Richard Leftwich
Lou Dalbom
Joe Carrier
Cecile Mossman
Dan Boles

Seated

Mary Ruth McNeil
Lee Hendricks
Phyllis Shook
Merion Seyb
Herbert Hendricks

Leneans

The faith of the Leneans, religious drama group, is stronger than their superstitions. This is their thirteenth year of organization, and it has been a successful one, indeed. Under the direction of Miss Edith Dielmann, founder of the Leneans, they toured western Kansas and northwestern Oklahoma, presenting their play approximately thirty times this season. The play chosen was "Mary Magdalene", which dramatized the cleansing of Mary's hands by Christ, after which she became a devout follower with a finer spiritual concept.

Efficient organization is a vital part of the success of this troupe of young actors, and each one must fulfill his responsibility without fail. Officers this year were: Herbert Hendricks, president; Phyllis Shook, secretary; Dick (W. T.) Leftwich, business manager; Dan Boles, stage manager; and Joe (Sparks) Carrier, electrician.

The Leneans are entirely self-supported by the free-will offerings of their audiences. All costumes, stage settings and lighting equipment are also purchased from the fund thus created. While on tour, they are guests in private homes. The traditional return home is marked with a "howl", old Lenean term meaning "post mortem of the trip over supper".

As representatives of Southwestern, the Leneans have done a highly commendable work through each year of their existence.

Campus Players

Miss Helen Graham, Director

Ronald Brown
Richard Leftwich
Marcia Hubenett
J. D. Krell

Evan McCall
Frances Robinson
Gale Shields
Phyllis Shook

Dual natures are trifling to the Campus Players, who, with the aid of brush and costume, can run the gamut of dramatic figures from Lady Macbeth to Falstaff, and, through agency of nature or plastic fleshing, back to Cyrano de Bergerac.

Since their organization in 1919, Campus Players have presented to Winfield audiences such well known plays as "Death Takes a Holiday", "Hay Fever", "Romeo and Juliet", "The Petrified Forest" and "Paola and Francesca", their current spring production.

Bound by a common devotion to the theatre, each member does his part not only as an actor, but as stage hand, business manager or prop man, as well. Consequently, the Campus Players are self-supporting.

The nucleus of the group is Miss Helen Graham. Were it not for the ingenious guidance of "she of the mighty larynx", the actors would be merely a mass of grease paint and brocade lost in a maze of scenery.

Membership in this organization must be preceded by at least one semester of probation. Besides the presentation of plays, Campus Players enjoy Sunday afternoon teas and play reviews at Miss Graham's and attend professional stage productions at Wichita.



- Adoration scene from "Eagerheart"
- "Close eyes, ears, nose and mouth—ahh!"
- Mob psychology in "The Petrified Forest"
- Know your lines—both kinds
- Tea will be served at four



Dr. Leroy Allen
 Dr. J. Thompson Baker
 Viola Beeman
 Mr. Charles K. Bernheisel
 Mary Ellen Brownlee
 Miss Lillian Cloud
 Harvey Crabb
 Maxine Crow
 Russell Daughenbaugh
 Mrs. Grace Edwards
 Miss Helen Evers
 Robert Haines
 Miss Ada Herr
 Richard Leftwich
 Dr. Rob Roy MacGregor
 Dr. T. Reese Marsh
 Kenneth McCaffree
 Heber Miller
 Lena Mitchell
 Mr. Wm. Monypeny
 Dr. Frank E. Mossman
 Rev. Alvin W. Murray
 Mr. Wm. J. Poundstone
 Eugene Setzkorn
 Phyllis Shook
 Mildred Stollei
 Mr. H. S. Varner, Jr.
 Mr. C. I. Vinsonhaler
 Miss Chalcea White
 Jerry Yarberry
 Barbara Gardner (not pictured)
 Betty Miller (not pictured)
 Agnes Nurse (not pictured)

Pi Gamma Mu

Leading the accomplishments of Southwestern in the field of honorary organizations is the founding of this national social science honor society. Pi Gamma Mu, originated in 1924 through the stimulating efforts of the present executive secretary, Dr. Leroy Allen, now has 125 chapters in recognized colleges and universities throughout the United States, in Hawaii, the Philippines and Canada. Its purpose is the inculcation of the ideals of scholarship and social service in studying social problems and applying the scientific attitude to their solution. Mary Ellen Brownlee is president of the Kansas Alpha chapter, which annually elects to membership about twelve per cent of the upperclassmen on the basis of high scholarship and wide social interest.

Kappa Omicron Phi

Standing

Verna Daughenbaugh
Edith Rickers
Vera Berry
Miss Evers
Miss White
Mary Kathryn Potter

Seated

Margaret Smith
Annabel Beck
Lorene Kiddoo
Leah Spitze
Margaret Durnil
Viola Beeman



Election to Kappa is an honor hoped for by all home economics majors. It is a national honorary fraternity to which candidates having a grade average of B are elected on the basis of leadership and potential success in their field. Progressive studies in home economics are discussed in regular meetings and applied in the dinners Kappa serves to raise funds. This year several from Mu chapter hope to attend the national conclave at Williamsburg, Virginia, biennial convention of Kappa Omicron Phi.

East Hall

The sixteen girls in this dormitory pride themselves on the cooperative social plan on which it is organized. On week ends they hold informal parties at which college men are appreciative guests. For East Hall is known for its "food fit for a prince", as vouched for by Prince Loewenstein during his visit to Southwestern. The "walk-out" and initiation are important milestones in the year for each member of the hall.

Top Row

Agnes Nurse
Cora Lou Perkins
Lorraine Riggs
June Liming
Lucille Johnson
Margaret Ebright
Dorothy Alice Holman
Marguerite Schriver

Middle Row

Dorothy Birch
Mary Margaret McGhay
Mrs. Cobb, housemother
Cecile Mossman
Mabel Embers
Anna Laura Mackey

Bottom Row

Virginia Nurse
Marjorie Gee
Geneva Bland





Third Row: Brown, Miss Swartz, Morris

Second Row: Gerstberger, Gan, Kiddoo, Shook, Linn Backus, VanGundy

First Row: Miss Miller, Sall Austin, Dieterich, Brownlie



Third Row: Hinshaw, G Nurse, Kiddoo, Beemas, Evers, Knepper, Toblat, Sall

Second Row: Mendenhall, Perkins, Miss White, Eder Baxter, Youle

First Row: Lehman, Berry, Sall Smith



Fourth Row: Little, Thoma, R. Earsom, Hiebach, Chapin, Dieterich, Ester Mackey

Third Row: Burgess, Groom Compton, Shook, Yarns Lewis, Newlin, Shaft

Second Row: Dr. McGraw Parker, Baden, Miller, Melie Mr. Bernheisel

First Row: Crabb, Dunas Earsom, Reccius, Warren



Third Row: Riggs, Shields, Fiering, Stollei, Anderson, Hillyard

Second Row: Stevick, Dr. Andersen, Robinson, Miss Miller Gylling, Holman, Dean, W. chell, Lallement, Dr. Mark

First Row: Mr. Vlasman Baden, Nurse, Parker, Gishman, Matthews

Inter-S

Arbitration those student s by the presiden and represent antagonism, the This year Miss Kiddoo as secre

Gamm

This local h of C for election of the professio Kappa Omicron education and a of the year. Th 1940.

Internat

Another bar host to the Miss hundred delegate heard. Miss Am western had the secretary, Harvey and Gale Shields club, which meet

English

Authentic an interest in literary for membership in literature, and sur of the group. A talent in that field with the world o

Inter-Society Council

Arbitration, conciliation, mediation, intervention and reconciliation, all these are among the duties of the student society diplomats who compose this "Court of Appeals". Functions of the council are directed by the president with the cooperation of the other members, who are the society presidents, rush captains and representatives. Wherever there is rivalry and competition there is smudge and grudge; in order to prevent animosity, there must be neutral grounds. These are bounded by the sessions of the inter-society council. This year Miss Margaret Miller was elected president; Mildred Stollei served as vice-president and Lorene Wood as secretary-treasurer.

Gamma Omicron Phi

This local home economics club requires at least eight hours credit in the department and a grade average of 2.0 for election to membership. Its purpose is to promote social poise, personality, leadership and knowledge of the professional aspects of home economics not gained in classroom work. Weekly meetings held with Gamma Omicron Phi feature subjects of interest and value to majors in this field. Mrs. Cobb's talk on consumer education and a talk on dietetics by Miss Taylor, of Newton Hospital, were among the outstanding programs of the year. The girls presented a homemaking project to two Girl Scout troops as their major undertaking for the year.

International Relations Club

Another banner of distinction is unfurled over Richardson's dome. This year the local I R C group was invited to the Mississippi Valley International Relations Clubs conference. Not only were there some three hundred delegates registered for the convention, but such famous speakers as Dr. Rippey and Dr. Bohnstedt were present. Miss Amy Heminway Jones, Carnegie Endowment representative, was the main speaker. Southwestern had the following conference officers: Betty Miller, president; Adelaide Baden, corresponding secretary; Harvey Crabb, treasurer; and Dr. MacGregor, faculty advisor. Mabel Embers, Margaret Parker and Gale Shields directed social activities of the conference. These officers held similar places in the local club which meets each Friday evening.

English Club

Authentic and proper as the four o'clock tea served at its meetings, is the name of this club. A genuine interest in literary matters, a major in English and classification in one of the three upper classes are requirements for membership in the English Club. Each faculty sponsor prepares a program on some particular phase of literature, and surveys and reviews of drama, prose and poetry are presented by guest speakers and members of the group. A student poetry contest is sponsored each spring in the interest of developing and recognizing talent in that field. The entire program of the English Club stimulates critical appreciation of and familiarity with the world of letters and its contribution to society.



Marcia Hubenett
Editor

Clark Moots
Business Manager

Rex Huff
Photographer

Miss Miller
Dr. Albright
Faculty Advisors

Moots, Hubenett, Huff • Oncley, Orahood, Trumbull, Yerkes • Dix, Wandmacher, Dungan,
Woodson, Brown • Chapin, Womeldorf, Miss Miller, Stitt, Tuttle

Moundbuilder

If you were to stumble up the top flight of stairs in Richardson Hall and knock on the door of Room 13, and if adventure still burned within your soul after a hoarse tenor challenged "c'mup", and if you weren't laid to rest by the brow-beating doorway, you would enter that jubilant confusion the Moundbuilder staff calls "home".

"It's just a simple little nook, but we like it", says the cordial business manager with a sweep of his hand that sends the top layer of books crashing from the high stool. "And we have a sink and a coffee-pot in the dark room; our photographer enrolled in Elective Foods this semester—that's he underneath the black apron. Yes, that's Betsy over there on the desk—no, not the copy writer, the typewriter. The editor's the one beneath the "Don't Disturb" sign. Now right out here's the back porch; be careful not to step through a skylight. Nice, don't you think?"

And while it may never appear as a model penthouse in **Better Homes & Gardens**, this office tucked away between the dome and nothing-in-particular at Richardson Hall will always have a certain Bohemian charm for those who banged out copy on its gossiping typewriters, aimed candid cameras and did jiu-jitsu tricks with a budget that you might have a 1940 Moundbuilder.

It all began when the Publications Committee elected a hopeful trio to edit, photograph and pay for this annual; it continued through nine months of hard, happy work by a determined staff; and now we close the door of Room 13.

Geraldine VanLaningham
Editor

Lena Mitchell
Associate Editor

Bob Fleener
Business Manager

Tom Backus
Assistant Business Manager

Miss Miller
Faculty Sponsor



VanLaningham, Mitchell, Miss Miller, Wandmacher • Backus, Fleener • Baden, Parker, Yarberry, Baird, Deckert, Hinshaw, Smith, Eckel, Bray, Grossman, Reimer, Brown, Tuttle • Thorne, McKnight, Womeldorf, Young, Dix, Riggs, Story, Embers, Johnson

Collegian

No society debutante is more sought after than is the Collegian when it "comes out" on Wednesday or Saturday mornings in Richardson Hall. Although there are errors now and then, the staff admits, the college newspaper is good enough to give the best textbooks a race for their readers in eleven o'clock classes on those days.

The capable and industrious Collegian staff, guided by Geraldine VanLaningham, editor, has published issues of the paper every two weeks, except when special editions for the I R C conference and Senior Day have altered the regular schedule. First semester the regular staff was aided and abetted by 24 students, most of whom were members of the journalism class. All the second semester journalism students were contributors to the "scoop sheet".

In October, Editor "Gerry Van", Business Manager Bob Fleener and the Moundbuilder staff, accompanied by Miss Margaret Miller, faculty advisor of student publications, attended the national convention of the Associated Collegiate Press at Des Moines. There they learned much about modern journalistic trends from noted authorities and other delegates. This was the first Southwestern delegation ever to attend the national convention.

Several changes have been made in this, the Collegian's forty-fifth year. Among these were modernizing the headline style, using more pictures and adding "Survey Stories" and other new columns. But the lure of printer's ink, the thrill of "making it pay", the determination to record current S C life for S C students remain unchanged.



Standing: Dr. Albright, Inspector Green, Whitesell, Swartz, Ros Snyder, Mr. Carpenter

Seated: Huff, Webber, Green Taylor, Wood, Snook



Standing: Gulick, Ward, Dungan, Bursack, Moots, Patton

Seated: McCaffree, Stoller Couch, Shook



Standing: Dudits, Pinnick, Morris, Shumate, Gosting, Dotson, Beck, Kantz, Taylor

Dr. Albright, Demaree, Wright Couch, Backus, Barker, Ward White, Dr. Plum

Seated: Ratcliff, Ott, Sibling Gerstberger, Gulick, Hildreth, Womeldorf, Torrance



Standing: Gulick, S. White, Moots, Hiebsch, B. White, Gardner, McCaffree

Seated: Brownlee, Schriener, Dr. Baker, Hendricks, Bland, Dr. Allen, Dunlap, Chapin

The

This
installati
Congrat
such a st
program
Carpente
Webber

Ho

Neve
Just as an
lished.
first amon
this progr
ing the re
and Germ

Pi S

"Tea
in assembl
science st
cratic, con
reports of
quality pr
ported his

Pi K

"Reso
the Delta c
ment in Kn
Chapin, me
the entire

Studen
Many deba
is the comp

The Flying Builders

This year marked the inauguration of one of the greatest advancements of the college in recent years, the installation of the Civilian Pilots' Training Program, under the direction of the Civil Aeronautics Authority. Congratulations to Dr. Albright, director of the local program and ground school instructor, for producing such a strong unit. Southwestern, starting under handicaps, was the first school in the state under the new program to have students in the air. Flying instruction was handled by the Carpenter Air Service, with Billie Carpenter instructing. The efficient efforts of these two men has turned out ten capable fliers, of whom Jimmie Webber is the chairman.

Honors

Never let it be said that a Southwestern student has been held below capacity in scholastic opportunity. Just as an escape valve for excess educational energy of undergraduates, "honors" courses have been established. A student who exercises initiative in all his academic work and puts scholastic and curricular activities first among his interests is elected to do "honors" work by the administration committee. To graduate from this program, a student must work at a project approved by his major professor, write a satisfactory thesis covering the results of his work, pass a comprehensive written and oral examination, be able to read ordinary French and German prose and maintain a B scholastic average.

Pi Sigma Gamma

"Tea will be served at 3:30 this afternoon in Room 34 at North Hall," announces President Jesse Gulick at assembly, "and it will be preceded by a paper of interest." Anyone who entertains the least idea that the science students are narrow should attend one of the club's weekly meetings. The organization is democratic, congenial and most scientific; even the tea is made from distilled water. Student papers are usually reports of their special work in one of the fields of natural science. Members whose work is of superior quality present their papers at the Kansas Academy of Science. Dean Couch, first semester president, reported his work to the American Chemical Society at Cincinnati this spring.

Pi Kappa Delta

"Resolved that a policy of strict neutrality must be maintained," draws the argumentative president of the Delta chapter of this national forensic honorary society. That was the question used at the national tournament in Knoxville, which two of Southwestern's teams attended this year. The boys' team, McCaffree and Chapin, made an excellent showing, while the girls' team, Brownlee and Schriver, was one of six teams in the entire meet to come home with a superior rating.

Students are elected to membership who have successfully participated in debate, oratory and extempore. Many debate trips and meets are held annually to exercise the competitive ability of the teams, and Dr. Allen is the competent coach in forensics at S C.



First Row: Tobias, VanGundy, Trumbull, Liming, McNabb, Dunbar, Stevick, Yerkes, Demaree, Austin, Gardner, E. Johnson, Nicholson, B. Dieterich, Jarvis, Shuman
 Second Row: Ryniker, V. Nurse, Freeburg, M. Smith, A. Beck, Marj. Matthews, L. Dieterich, Ditamore, Mr. Dees, Lippard, Marg. Matthews, Miller, Plank, Buchanan, McGhay, A. Nurse
 Third Row: Sherring, Voran, Earsom, Deets, Williams, Eckel, G. Beck, Bloss, Kerr, Murray, B. White, Nisbet, Wandmacher, F. Johnson, S. White
 Fourth Row: W. Smith, Krehbiel, Dungan, Allen, John, Gilbert, Harrison, Kiddoo, Mundinger, J. Morris, Davis, Roark, Wilson, Hoyt, Lallement, Warren
 Not pictured: E. Morris, Seal, Matthew, Toner, Kiser, G. Eckel, Keyes

A Cappella Choir

This well known A Cappella choir is composed of 62 members, who are in the choir for the enjoyment of singing and working together, not to fulfill a requirement. More than half the personnel are not music majors, and the only requisite for membership is the try-out before the director in the fall.

Prof. Levi O. Dees, head of the voice department, was new to Southwestern this year. He showed remarkable ability in training his group by presenting the first concert in Salina at the annual district conference of the Methodist Church one month after school opened. Since the initial performance the choir has presented many concerts, and enthusiastic critics have judged it one of the best choirs produced by Southwestern.

The annual spring tour is an unforgettable experience to every choir member. Since its organization 14 years ago, the group has made at least one tour each spring. This year 25 concerts were given during 11 days of the spring vacation period. The college assumes no financial responsibility for the choir; there are no membership fees, and all expenses are paid from receipts earned in concert.

Warren Allen, president of the choir, and Earl Dungan, business manager, shared the privilege of student directorship.

String band
 Law
 Funt
 Haw
 Brown
 Bader

Two of
 phony orchestra
 determined to
 of students in

Since the
 and the concert
 in the state.

Among the
 soling, Symphonic
 by Strauss, "L"

This episode
 Woodson, vice
 in charge of p



String bass: Bean, Buchanan, Wandmacher; Percussion: Miller, Pennick; Horns: Voren, Williams, Myers, Torrance; Tuba: Lawrence; Trombones: Thorne, Warren, Hudson; Trumpets: R. Brown, Reynolds; Woodwind: Davis, Pence, Funston, Erhart, Stiner, McGhay; Flutes: McPeck, Wooddell, Embers; Cello: Merriam, Yerkes, Meador, Stiner, Hawkins; Violins: McIntosh, DuPont, Swartz, Holman, VanGundy, Resler, Dungan, Henderson, Roark, Ryniker, Brown, Woodson, Benton, Matthews; Violas: Dunbar, McDermott, Matthew, Anderson, Austin, Chapman; Harp: Baden. Not pictured: Brummett, Dilworth, Lippard, B. White. Conductor: Dean Leavengood

Symphony Orchestra

Two of the finest concerts in the history of the organization were presented this year by the college symphony orchestra. When Dean Luther O. Leavengood took over the conductor's baton four years ago, he determined to develop a finished concert orchestra from the group, which existed then primarily for the training of students in the orchestral field.

Since that time the symphony library has been more than doubled, instrumentation has been completed and the concerts have shown a steady improvement. Last season this orchestra was acclaimed one of the best in the state. During the current season it was featured in a broadcast over KFH and a concert in Wichita.

Among the concert selections presented this year were: "A Midsummer Night's Dream", by Mendelssohn; Symphony No. 5, by Tchaikowsky; "Roumanian Rhapsody", by Enesco; "Tales from the Vienna Woods", by Strauss; "Les Preludes", by Liszt; Overture to "Lenore", by Beethoven.

This spring Bill Brown completed his second year as concertmaster. Marcia Barbour, cellist, and Bill Woodson, violinist, both appeared as soloists. Dwight Benton served as librarian and Glenn Matthews was in charge of property.



Percussion: Pennick, Swartz, Austin, Miller; Brass: B. Brown, Lawrence, R. Brown, Reynolds, Bean, Brummett, S. White, Backus, Baughman, Hudson, Thorne, Potter, Krause, McCollom, Warren, Dungan, Krehbiel, Nolan, Henderson, Myer, Williams, Voran, Nurse, Garey; Woodwind: Erhart, Funston, Davis, B. White, Stevick, McPeck, Stiner, Banks, Dilworth, McGhay, Smith, Womeldorf, Hoar, Beck, B. Dieterich, Holt, Reimer, Birchenough, Wheeler; Drum majors: John, Harrison; Twirler: M. Dieterich; Mascot: File; Conductor: Prof. C. O. Brown

Southwestern College Band

Resplendent in new uniforms of french and royal blue with brass buttons and braid to shame a major-general, the college band, under the continued direction of Prof. C. O. Brown, enjoyed a most successful season.

The first trip this year was in accompaniment of the football team to Wichita. While there, the band was featured in a 30-minute broadcast over KFH. Highlight of the season was the trip to Pittsburg, where the band members were entertained overnight as guests of the K S T C students, whose reputation for hospitality is legend.

Of major importance to Southwestern and to Professor Brown, completing his nineteenth year at S C, was his successful promotion of the Band Clinic in March. N. DeRubertis and Boh Mahkovsky, nationally known conductors, and Mr. Brown conducted the combined Winfield municipal and Southwestern college bands in a truly great concert. Featured selections were the high school contest numbers, and 40 bandsmen from over the state were present to watch and listen to these masters' interpretations and tempos.

The marching band was in the hands of Johnny Harrison and Ed John, alternating drum majors, and the twirling of Maxine Dieterich again won high praise. All in all, it was a grand year, and here's wishing "Prof" and the band many more like it.

K K

You
Since
sportsman
when sha
at Robins
Valentine

Trad
before ea
tion" at g
basketball
and white

Beac
K K's can
They are a

Baxter
Beck
Bender
Berry
Brownlee
Campbell
Durnil
Ewing
Hubenett
Humburg
Jarvis

K K Pep Club

"When a K K girl walks down the street,
She looks a hundred per from head to feet. . . ."

You will find 23 of the peppiest, most loyal and attractive girls in Southwestern whom that description fits.

Since their organization in 1928 as the first girls' pep club on the hill, K K's have upheld the ideals of sportsmanship, school spirit and individual development. They have found that good times are most enjoyed when shared, and 1940 in K K annals is highlighted by the treasure hunt at Graham's farm, the slumber party at Robinson's, the paddle party, the candlelight and creed at the installation tea, the Christmas dinner and the Valentine formal.

Traditions have been handed down for each new member to uphold. The pep meeting in the drugstore before each home game dates back before the club's organization. To be a part of the "chain of concentration" at games is a heritage of each K K. Each year the club presents an assembly program and a skit at a basketball game. But the most important of K K traditions is the comradeship between members of the black and white uniformed club.

Because the club is small, each girl feels her responsibility in making K K an asset to Southwestern. K K's can be depended upon; this is verified by the number of them in trustworthy positions on the campus. They are an enterprising lot in doing their share in Southwestern building.

Bexter	Lehman
Beck	McDermott
Blender	Miller
Berry	Morris
Brownlee	Peden
Campbell	D. Robinson
Dornil	F. Robinson
Ewing	Seevers
Hubenett	Shaft
Humburg	Smith
Jervis	Tuttle
Youle	





Freda Bridgewater
Maxine Crow
Lou Dalbom
Cornyn Davis
Maxine Dieterich
Jean Dillworth
Dorothy Dunbar
Margaret Ebright
Barbara Gardner
Joy Hankins
Hazel Hendricks
Ruth Johnston
Lorene Kiddoo
Carol King
Anna Laura Mackey
Mary Ruth McNeil
Maudene Messmer
Azalea Miller
Cecile Mossman
Jean Oncley
Mary Kathryn Potter
Ruthe Robbins
Marguerite Schriver
Margaret Sheel
Phyllis Shook
Muriel Smith
Dorothy Spitze
Bette Stevick
Dorothy Stevick
Margaret Stevick
Margaret Tobias
Geraldine VanLaningham
Ruth Yerkes

• Baby Shocker - Woo makes her debut • "All in our places with sunshiny faces" • Rush week is grilling, eh "Prexy"? • The Jinx meets St. Valentine • Debit the social column

Jinx Janes

One of the last organizations on the hill to retain the traditional school color in its uniform is the Jinx Jane pep club. Its members in their trim purple dresses with Jinx insignias are easily discernible in the special pep section at athletic games.

The Jinx Janes organized in 1935 and have done much to bring the Jinx, mascot of Builder teams, from his exile in the "dear, dim past" to his rightful place on the Southwestern campus. Each fall in a general pep assembly they unveil "the Jinx" with proper ceremony. Then the tradition surrounding that enigmatic champion is retold—how it cast a spell on Builder rivals, by whom it was kidnapped from an underground vault, and how fearless S C men braved untold dangers to restore it.

During rush week the Jinx Janes entertained rushees with a wiener roast and hayrack ride, a Hallowe'en party and a formal buffet supper. Their version of "The Wizard with Claws" in student assembly was a five-star "hit" with the Cowardly Lion taking its place as King of Comedians. The club also featured a "baby contest" of conference teams between the halves of a basketball game.

Each Monday evening the group holds its regular business meeting at Smith Hall. Various social activities mark "red letter days" on the year's calendar. The big event of each season is the annual spring formal, where the Jinx reigns among all the youth and color of his court.

Kappa Rho

It doesn't take a Sherlock Holmes to determine the identity of a Southwestern fellow sporting a white sweater with two Greek letters and a wrapped-in-cellophane jauntiness. These are the unmistakable characteristics of a Kappa Rho.

Organized but three years ago, the Kappa Rho pep club has risen to a place of recognition in Southwestern with alacrity. On the front row (or as one wit remarked, the Kappa Rho) at every football and basketball game, these pepsters have had an important part in promoting Builder victories.

During these three years the club has proved by clever assembly programs and stunts that its ability lies not in pep alone. Everything from dramatic productions to swing sessions (soup to nuts; no corn) has been offered to enthusiastic S C audiences by Kappa Rho. In the spring of each year the club has its "Sweetheart Banquet", gala social event of their year.

Two student presidents have brought honor to the roll of this organization. With members ranging from music to business majors, the club takes in a wide variety of students. Pep, personality and contribution to the campus are main requirements for membership. This membership being limited to 24, Kappa Rho tries always to choose men who possess the creative initiative characteristic of the club.



Top to bottom:

S. White, Pickering, W. Brown, Keyes, Hays, Allen Crow, Ross, B. White, John, Reynolds, Krehbiel Dungan, Belt, B. Brown, Brummett, Moots, R. Brown Fleener, Howland, Pennick, Benton, Harrison



"For they are jolly good fellows"
Standing: D. Smith, Austin,
Painter, MacKay, Moore, Win-
ters, Montgomery, Harnden

Seated: Doty, Brummett, Swartz,
Backus, Roderick.

At the "O"

Baker, M. Tucker, Malone, O.
Tucker, Fugit, Henry, Williams,
McCoy, Whitesell



"S-men" guard the trophy case.
Dix, Nuckolls, Hart, Stevens, Dill-
man, MacDonald, Frank, Hicks,
Gilbert, Reeves, Young (not
pictured)

"Me'n Coach"

Standing: Marine, Gillespie,
Martin, R. Smith, Porter, Rohl

Seated: Seay, Monypeny, Pound-
stone

Pi Sigma Phi

It takes real men to uphold traditions and records like those of Builder teams. That is the reason a Pi Sig wears his white sweater blazoned with a big purple "S" so proudly and calls forth such spontaneous admiration for the athletic feats which won it. In 1923 the need for a compact and active organization among S C athletes was recognized, and the old "S" club was revamped into the honorary fraternity, Pi Sigma Phi. To promote the highest standards of morals and scholarship among athletes, to maintain the code of sportsmanship always characterizing Builder teams, to preserve the place of athletics in Southwestern, these were the objectives of the founders of the organization.

Lettermen in college sports are eligible for membership, and the final test of worthiness to wear the purple "S" is a genuine hardwood paddle line and the stiffest initiation on the hill. Having been duly impressed with the significance and responsibility of this honor, a pledge enjoys the varied activities of Pi Sigma Phi on the college calendar. Victor Gillespie, president, led the Pi Sigs in their two most festive occasions, Homecoming Day and the spring formal, on both of which occasions the stalwart Builders pay no small honor to the fairer sex.

Mrs. Grace Hyndman
Housemother

Top row	Lower Row
Johnston	Messmer
Seivers	Lehman
Metz	Yerkes
Wendelburg	Sevick, M.
Schlenz	Reimer, V.
Tobias	Miller
Crow	Potter
Sevick, D.	Seal
Gylling	Zimmerman
Sevick, B.	Beck
Dumil	Peden
Gardner	Dalhom
Hubenett	Dayton
Austin	McCollom
Hyndman	Wheeler
Bender	Hankins
	Smith
	Ewing
Bridgewater	
Davis, C.	Mendenhall
Campbell	Kesler
Shall	Lippard
Humburg	Strauffacher
Kiser	Buck
Davis, K.	Phillippi
Little	Wilson
Robbins	Reimer, G.
Baty	Stanley
Kiddoo	Krause
White	Van Gundy
	Wheatley
	Sargeant
	Fox
	Rickers



• And someone said "three's a crowd" • Consultation period • "S" is for Sunday, Smith and smile • "Information, please" • How many jokers in a double deck? • "Escape Me Never" • 'Twas the night before Christmas holidays.....

Smith Hall

Having stood desolate and deserted all summer, Smith Hall on matriculation morning seems slightly drunk with the "elixir of youth". Veteran "Smithies" are welcomed back with exuberant cries, and new girls are scanned as possible pledges by the connoisseur eye of the upperclassman. Smith Hall has all the confusion and gusto of a human rummage sale for the first few days, then settles back to normal from sheer exhaustion.

When society rush and initiation weeks are laid to rest, Smith's initiation rites begin. Its freshmen can be recognized from afar by their "five-and-ten" scent, their silver nail polish and their hair plastered tight to the head.

Open house is an annual event of the pre-holiday season. Then it is that all rooms in the dormitory are clean at the same time and guests are served tea by the gracious housemother, Mrs. Hyndman. Detectives from other halls also make the "grand tour".

The Christmas holiday is celebrated with a Smith Hall formal and with a house party where all the girls gather in the living room for caroling, games, gift exchange and refreshments served by Mrs. Hyndman.

A Spring formal is the grand finale to the year at Smith Hall. Then once again it is left to three months of peaceful solitude and memories.



Mrs. Mabel Casburn
Housemother

Dwight Benton
Dan Boles
John Deckert
John Garey
Kent Hatfield
Frank Johnson
Clifford Jones
James Kreie
Richard Leftwich
Alvie Newberry
Jimmy Pickering
Adrian Richardson
Marion Seyb
Walter Smith
Wesley Stein

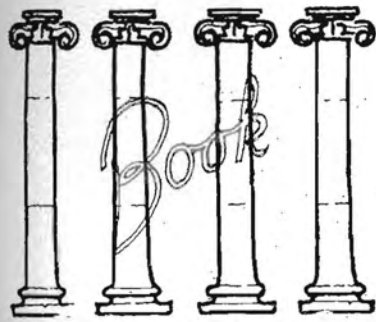
• Four aces: Newberry, Hatfield, Pickering, Jones • At home: Mrs. Casburn, Johnson, Leftwich, Deckert • Paddle line: Boles, Kreie, Garey, Stein • Four-part harmony: Benton, Smith, Richardson, Seyb.

Holland Hall

"Social center, acme of purity, foundation of Southwestern College, home of fifteen very fine young men, Mrs. Casburn, housemother." Such is the enlightening response to a telephone call to 543, and our collegiate dictionary gives no better definition of Holland. The hall itself is surprisingly conventional, having four walls (finished on the outside with boards and on the inside with pictures), a recreation room and a parlor, and even study rooms complete with desks.

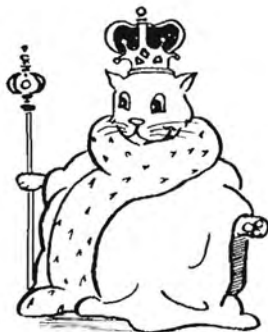
The boys enjoy indoor sports and excel in ping-pong, "waste-basket upset" and parlor tricks. They are firm believers in organized society and founded the Phi Phi chapter of the Casanova Club. Further cultural interest is manifested in their picture galleries, of which they are very proud. At the close of the current exhibit all private collections will be donated to a Holland Hall Memorial Art Gallery. However, these versatile young men are also practical-minded. Of the six halls on the hill, Holland alone boasts regular transportation facilities, which Model T is carefully interred on the front porch on state occasions.

In brief, the "Hollanders" are a typical assemblage of hearty college fellows getting a liberal education from experience and from textbooks.

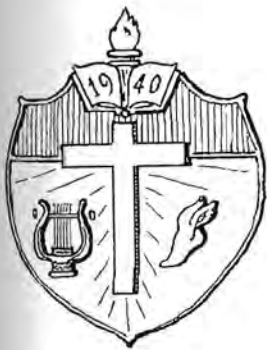


Crown and Crest





• Ideals and traditions of a college are best known through the society they build



Southwestern College is built of something more than stone and mortar.
The pioneer educators who laid its foundations built for enduring strength.
Their creed is still used today in building for the future. We who are the

Class of 1940, in observance of those ideals which have earned a place of achievement and respect for our
Alma Mater, present to all who are Southwesterners in spirit eight underclassmen whom we believe will
maintain

The Builders' Creed

I will strive for:

SINCERITY in my every thought and deed, that they may stand the tests of time and adversity.

PURPOSEFUL SCHOLARSHIP, that my learning may be applied to higher and richer living for myself and others.

LOYALTY and ENTHUSIASM, that my work may grow from a firm foundation with the true workman's aim
and spirit.

UNSELFISH and DEPENDABLE SERVICE, that I may be a worthy and necessary part of a harmonious
whole.

TOLERANCE, that I may appreciate the work of others and allow them the same choice of pattern for living
that I reserve for myself.

SELF DISCIPLINE, that my habits of thought and action may realize the best possible use of my abilities and
be organized in concordance with those of others.

CHARM of PERSON and MANNER, that whatever contributions I have to make may be enhanced and the
routine of duty lightened by gracious living.

HEALTH, that all these aims may be carried out in the most efficient and forceful manner.

The Builders' Creed

PHYLLIS SHOOK
Sincerity



JESSE GULICK
Purposeful Scholarship



MARGARET DURNIL
Loyalty and Enthusiasm



DWIGHT BENTON
Unselfish and Dependable Service



VERA BERRY
Tolerance



STEPHEN WHITE
Self Discipline



NANCY JARVIS
Charm of Person and Manner



CARLE DIX
Health



Maxine Dieterich

Moundbuilder Queen



• democratic • studious

vivacious • idealistic •



• diligent • sympathetic

congenial • pretty •

Maxine Crow

Homecoming Queen

Clark Moots

Student President



• efficient • versatile

diplomatic • ambitious •



• Italian Renaissance charm

accomplished • gracious •

Adelaide Baden

May Queen

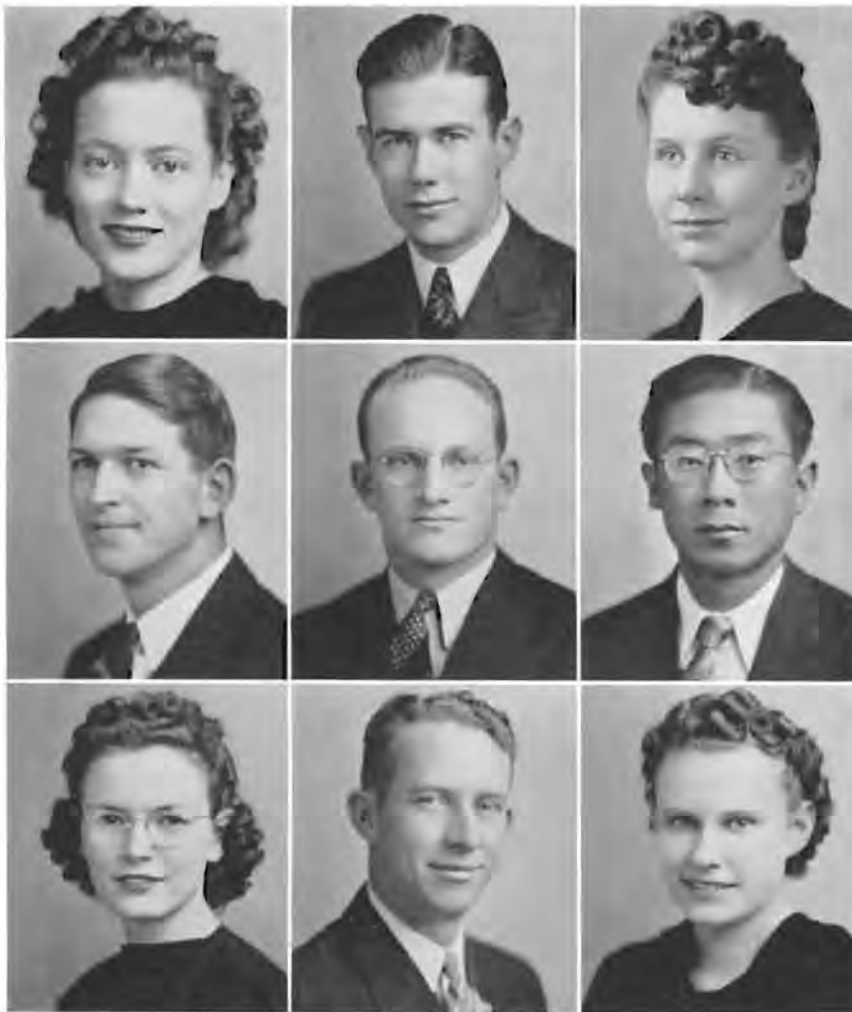
Warren Allen

Master of Ceremonies



• humorous • talented

handsome • collegiate •



Who's Who

Mary Ellen Brownlee

Earl Dungan

Marcia Hubenett

Kenneth McCaffree

Dale Marine

Miyuki Masuda

Lena Anderson Mitchell

Clark Moots

Mildred Stollei

Hiram "Stude", Southwestern '40, has his "little red book", and Mrs. Astorbilt has her big blue one, and to be listed therein is to increase one's par value many per cent. But to be listed in the publication, "Who's Who Among Students in American Colleges and Universities", is an honor based upon real achievement and accorded to a limited number of students in America each year.

From the upper one-third of the graduating class, nine students are elected by members of the faculty and the Student Council of Southwestern College. Leadership, scholarship, personality and future promise are the basis of election.

We are proud to present these fellow students as Southwestern's representatives in a distinguished assembly of youth from over the entire nation. We hope their future attainments will retain that place of honor.

Masterbuilders

Earl Dungan

Mary Ellen Brownlee

Clark Moots

Lorene Kiddoo

Dale Marine

Marcia Hubenett

There is a spirit instilled in every student who has divided the "Seventy-seven Steps" by three as he raced for an "eight o'clock", leaned over the rotunda to watch heads bobbing cork-like in the stream of chapel-goers, built his stone with others into the "Mound"—who has been a true Southwesterner. And it is a spirit which cannot be reduced to stock phrases from the eulogist's shelf, for it is the democracy, integrity and perseverance, the essence of western culture. It is that which gave Southwestern the name of "Builders".

It is the custom of these Builders each year to honor six seniors who have been leaders during their college careers. To them is given the title "Masterbuilders". They are elected in general assembly by the student body upon the merit of their contributions to the campus. Faithful and capable execution of responsibilities, insight and service regarding student and campus interests, furtherance of Southwestern's ideals and goals, these qualities characterize the "Masterbuilder".

Each "Masterbuilder" has achieved these aims through the unselfish cooperation and common goal of fellow Builders. He takes his place with due appreciation for the assistance, inspiration and opportunity given him. He has built a broader foundation for the works of his successors.





Belle - Athens



Belle Lettres

OFFICERS

First Semester		Second Semester	
Mary Ellen Brownlee President	Phyllis Shook Vice-President - Rush Captain	Virginia Austin President	Cornyn Davis Vice-President
Jeanne Youle Secretary	Ora Mae Ditamore Treasurer	Marjorie Plank Secretary	

MEMBERS

Virginia Austin	Ruth Hillyard	Martha McDermott	Rachel Schemahorn
Adelaide Baden	Dorothy Alice Holman	Marian McNabb	Margaret Seal
Calista Bender	Margaret Humburg	Suzanne Martin	Phyllis Shook
Vera Berry	Emma Jane Hudson	Dorothy Mead	Margaret Smith
Mary Ellen Brownlee	Eva Johnson	Maudene Messmer	Winifred Smith
Barbara Campbell	Ruth Johnston	Jane Newlin	Gerrie Tuttle
Frances Crane	Ruth Kiser	Mary Nicholson	Thelma Wendelburg
Cornyn Davis	Frances Lehman	Margaret Ruth Parker	Lena Ruth Wheeler
Kathryn Davis	Betty Lewis	Marjorie Plank	Mary Louise White
Mary Jane Dean	Georgie Liming	Mary Kathryn Potter	Christine Wright
LaJeune Dieterich	June Liming	Veneta Reimer	Helen Wright
Ora Mae Ditamore	Orine Lippard	Joyce Resler	Patty Yorke
Mary Warner Funston	Marjorie Little	Doris Robinson	Jeanne Youle
Virginia Hedrick	Marjorie McCollom	Frances Robinson	Ida Belle Zimmerman

Athens

OFFICERS

First Semester		Second Semester	
Bill Brown President	Jim Morris Vice-President - Rush Captain	Tom Backus President	Alvie Newberry Vice-President
Tom Backus Secretary	Kenneth McCaffree Treasurer	Jim Morris Secretary	

MEMBERS

Bill Allen	Dale Dunlap	Joe Kiser	Gale Shields
Victor Allen	Charles Elliott	Harold Krell	James Smith
Tom Backus	Robert Fleener	J. D. Krell	Ronald Stitt
Jack Banks	LeRoy Gerstberger	Kenneth McCaffree	James Story
James Bloss	Lawrence Guy	James McCue	Bill Swartz
Bill Brown	Paul Henderson	Jim Morris	George Wagner
Ronald Brown	Kenneth Hiebsch	Alvie Newberry	Martin Williams
Albert Caywood	Merle June	James Peterson	Curtis Wilson
Howard Crow	Joe Keyes	Robert Shepherd	Wayne Wilson

"No steps backward" is the motto of these joint societies, who can look back upon 50 years of colorful history at Southwestern. Athens was organized as an oratorical association in the days when old school elocution also embraced gymnastic art. Belles Lettres organized a year later, the result of secret meetings of the 16 "dorm girls" after "lights out" time. Personality building and literary achievement through social activities were their purposes.



"Leaning on the Old Top-Rail": Wagner, McCue, Campbell, Funston

"United We Stand": Dunlap, Shields, Backus, Newberry, Keyes

Look pleasant, please: B. Allen, McNabb, J. Kiser, Resler, Dieterich

We believe in signs: Wheeler, Zimmerman, Newlin, Potter, Johnston

"Dear Belles to you": Brownlee, Ditamore, Plank, Davis, Austin, Tuttle, Messmer

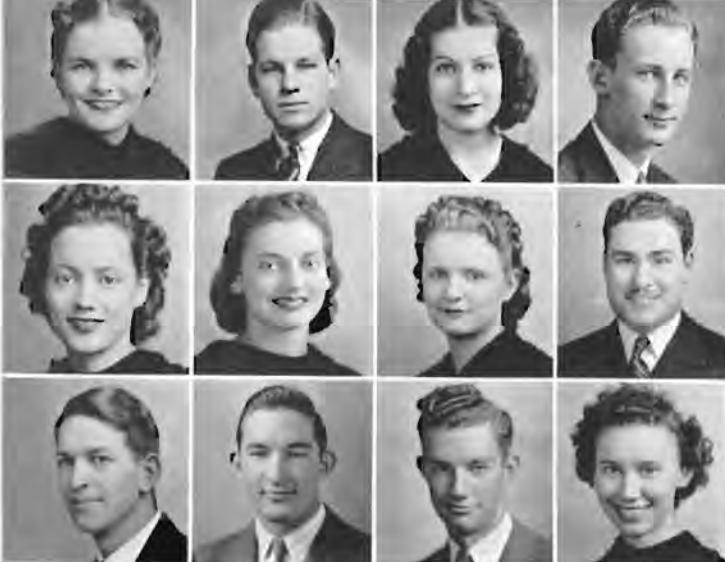
Installation, spelled "formal": Gerstberger, Hiebsch, Caywood, R. Kiser, Lippard, Reimer

Between you, me and the floor lamp: Lehman, J. D. Krell, Berry, Williams

Four's a throng: Morris, Shook, Elliott, W. Wilson

Story behind the head-line: Hedrick, Story, Little, W. Smith





HONOR ROLL

Virginia Austin
 Tom Backus
 Adelaide Baden
 Bill Brown

 Mary Ellen Brownlee
 Cornyn Davis
 Ora Mae Ditamore
 Joe Keyes

 Kenneth McCaffree
 Jim Morris
 Alvie Newberry
 Phyllis Shook

When debate and oratory became part of the college curriculum, the societies became more social than literary. However, inter-society contests in debate and dramatics are still important features of each year, stimulating rivalry and achievement.

Belle-Athens has built up tradition, not only for itself, but for the school. In 1921 Belle-Athens Day became an all-school day, the origin of the annual May Day festival. The May Queens in succeeding years have often been chosen from the Belles. Versatile Belles and Athenians play an active part in campus life and leadership at S C, promoting the growth and progress of other student organizations, as well as of their societies.

Each year they help introduce new students to the good times that may be had in college, the friendships and the opportunities for achievement. This year's rushees will long remember the wiener roast and the rollicking songs around a campfire, the open program at Richardson Hall, the gala festivity of the formal at the Country Club.

In April Belle-Athens celebrated its fiftieth year with a formal dinner at the LaGonda, honoring many former members as guests, among them Miss Eleanor Hayes, first president of Belles Lettres.

The spirit of sportsmanship, loyalty and friendly rivalry have developed with the societies. These, with the campus leaders they have helped produce, will maintain Belle-Athens' place at Southwestern.



Youle, McCaffree, Humburg, Crow, Guy



Pledge Parade: Wendelburg, Lewis, Bender, G. Liming
 Yea, Athens!: Shepherd, Swartz, B. Brown, Peterson
 "And pretty maids all in a row": Seal, H. Wright, Baden, Hillyard
 Tea in the Little Theatre: Holman, Schemahorn, Johnson
 Their Majesties, the King and Queen of Hearts: McDermott, Fleener
 Attenshun!! Please: Nicholson, Bloss, Hudson, C. Wilson
 Have you heard this one?: Stitt, Dean, D. Robinson
 Student Union scene: June, Tuttle, Parker, F. Robinson, Yorke
 At the post of duty: Henderson, M. Smith, R. Brown, White, J. Smith





Sigma - Delphi



Sigma Pi Phi

OFFICERS

First Semester		Second Semester	
Mildred Stollei President	Lorene Kiddoo Vice-President	Lorene Kiddoo President	Dorothy Stevick Vice-President
Freda Bridgewater Secretary		Ruth Yerkes Secretary	
		Maxine Dieterich Rush Captain	

MEMBERS

Ann Anderson Fredonia Anderson Clara Baty Annabel Beck Mary Lou Beck Maxine Beeman Viola Beeman Betty Birchenough Geneva Bland Rachel Bray Freda Bridgewater Wanda Broadie Frances Buchanan Marcielle Countryman Maxine Crow Lou Dalbom Katharine Dayton Betty Lou Dieterich Maxine Dieterich Maudine Dillee Jean Dilworth	Mildred Demaree Dorothy Dunbar Margaret Durnil Margaret Ebright Ann Ewing Laura Lee Freeburg Lenora Fry Barbara Gardner Marjorie Gee Barbara Grossman Lucile Groves Joy Hankins Maxine Hoar Bette Hollibaugh Loretta Hoyt Marcia Hubenett Nancy Jarvis Lucille Johnson Lorene Kiddoo Rosemary Kimble	Carol King Anna Laura Mackey Lorene Matthew Margaret Matthews Marjorie Matthews Mary Margaret McGray Mary Ruth McNeil Janis McPeck Mary Ellen Meador Azalea Miller Lena Mitchell Eva Morris Cecile Mossman Agnes Nurse Jean Oncley Helen Peden Marjorie Phillippi Edith Rickers Lorraine Riggs Ruthe Robbins	Anita Ryniker Jeanette Ryniker Pauline Schlenz Marguerite Schriver Helen Seevers Marjorie Shaft Margarett Sheel Muriel Smith Margie Stanley Bette Stevick Dorothy Stevick Margaret Stevick Olive Marie Stiner Mildred Stollei Margaret Tobias Dorothy Toner Anelle Trumbull Dorothy Van Gundy Gerry Van Laningham Ruth Yerkes Cathryn Young
--	---	---	---

Delphi

OFFICERS

First Semester		Second Semester	
Earl Dungan President	Don Birchenough Vice-President	Don Birchenough President	Herbert Hendricks Vice-President
Norton Hildreth Secretary	Harry Womeldorf Treasurer	Harold Tredway Secretary	Russell Chapin Treasurer

MEMBERS

Max Allen Marion Anderson Ray Baird Lloyd Baughman Marvin Bean Gerald Beck Dwight Benton Don Birchenough Dan Boles Grover Brown Joe Carrier Russell Chapin Harvey Crabbs Harold Deets Ted Dieterich Billy Dotson	Earl Dungan George Eckel Gale Elder John Garey Jesse Gulick Glenn Harnden John Harrison Kent Hatfield Herbert Hendricks Norton Hildreth Homer Hudson Rex Huff Edward John Frank Johnson Robert Jones Clifford Jones	Elden Kiddoo Karl Krehbiel James Kreie Richard Leftwich Emerson MacDonald George MacKay Glenn Matthews Douglass Moore Clark Moots Earl Nossaman Jimmy Pickering Adrian Richardson Louis Riebe Bryce Roderick Everett Salsar Marion Seyb	Edmond Shumate Gerald Sibley Ward Sims Walter Smith Hugh Snyder Wesley Stein Milton Thorne Ralph Thorne Harold Tredway James Voran Herman Wandmacher Leonard Warren Byron White Steve White Harry Womeldorf LeRoy Zahn
---	--	--	---

How's tricks?: Durnil, L. Kiddoo, Moots, John

It's a deal: Bridgewater, Wandmacher, Ross, Womeldorf, B. Stevick, S. White

Formals and flowers at Installation: McNeil, Gee, Yerkes, Dalbom, VanGundy

"The Play's the Thing": A. Nurse, Riggs, McGhay

"Having a Wonderful Time": Sheel, Jarvis, F. Anderson, Huff, Seevers, M. Stevick

What's the password?: Freeburg, VanLaningham, Gardner, Boles, Mitchell

Kibitzing is forbidden!: A. Beck, Dotson, Dunbar, Crabb, Tredway

Candlelight and ceremony: Rickers, Bray, Dayton, D. Stevick





HONOR ROLL

Dwight Benton
 Donald Birchenough
 Rachel Bray
 Mildred Demaree
 Earl Dungan
 Marcia Hubenett
 Lorene Kiddoo
 Richard Leftwich
 Clark Moots
 Norton Hildreth
 Mildred Stollei
 Margaret Tobias

The doors of the "Little Red School House" swung wide to introduce freshmen to Sigma-Delphi society life during rush week. There was perpetual recess, and the "poopils" had a rousing good time at hayrack rides, informal open program and "Last Day of School" dinner. Years from now they'll sit by the fire and talk about that first event: fat doughnuts and sweet cider served in a genuine hay barn, "skip-to-m' Lou" as originated and executed (almost butchered) by Earl Dungan, hill-billy music by Woodson and Matthews, with Leftwich twanging in heartily. Then there was the open program, called to order by "rithmetic teacher" and rush captain Clark Moots, and immediately brought to disorder by Ames, Dungan, Byron White, and John, who sang for redemption and were pronounced incurable dunces. Afterward, there was music, lime ice and small white cakes. At the formal dinner at the Brettun hotel there were round dinner pails, but they were nut cups; and attractive waitresses served the meal. Maxine Dieterich, Sigma rush captain, was a sparkling toastmaster. After school was out, some guests stayed to play games at the hotel, some went on to "grad" school.

Name never to be named! Pledge week and its manifold horrors struck like lightning and dazed 67 Sigma-Delphi pledges. Nightly devotions were held at the rock at the foot of the "seventy-seven", and woe unto him who came unprepared—or who didn't come. Pledges broke into a cold sweat at the mention of "insignificant strongylocentratusdrobackiensis". The night of judgment came, and "where angles feared to tread" pledges trod reverently in stocking feet. "Caesar's" nose was blown soundly, and "the court" came to order. An adamant jury and stern judge pronounced sentences while "the committee" conducted the traditional tour of inspection. Jumble of shoes below the rotunda; flour, water, lipstick and Limburger "facial"; painstaking

nd and knee descent of the "seventy-seven" stimulated by sturdy paddles. By the end of the evening, gamma-Delphi pledges were being rented out as heating units. By the end of pledge week they had proved themselves "shrink-proof" to adversity and worthy of full membership in the societies.

"They Shall Have Music": Demaree, A. Anderson, Bean, Stollei, T. Jones
 And here's a trio: V. Beeman, Morris, Schriver
 Formal balance: Crow, Shaft, Fry, Allen, R. Jones, Baughman
 Informal balance: Shumate, Hudson, G. Brown
 Meeting adjourned: Peden, Tobias, Oncley, Phillippi, Schlenz
 Thursday night at 8:15: Sims, Groves, Hildreth, Trumbull, Reynolds
 "Six Sigma Pledges and How They Grew": Meador, Robbins, Buchanan, Hankins, McPeck, Ewing
 "Tain't the way I heerd it": Pickering, Hatfield, Johnson
 "They who laugh last": M. Beeman, B. Birchenough, Countryman





"Little Man, What Now": Chapin, W. Smith, Matthews, Kimble, B. Dieterich, M. L. Beck

The excitement of pledge week resolved into the deliberate determination to plan a worthwhile program for the semester. Ideas were submitted, parties arranged, and the year started smoothly, with an attendance record which remained constantly above average. The Student Union was the scene of several informal parties, and picnics and a return engagement of the hayrack ride gave Sigma-Delphi a good shot of vitamin B. Joint meetings featured programs of music, dramatics and novel comedy acts. As part of the rehabilitation program, the piano in the society hall was completely overhauled and "Caesar" got his annual spring face lifting and hair-do by an army of Sigma sisters.

The first laurel wreath of the year graced "Caesar's" brow when the Homecoming Queen was selected from the sigma roster and the Sigma-Delphi float was awarded first prize in the annual parade (thanks to the loyal members who worked tirelessly, stuffing twenty thousand paper napkins through wire loops). Another Sigma wore a crown when the students elected the 1940 Mound-builder Queen.

Despite an interrupted social schedule, interest did not lag through the second semester, and several new members were pledged. Formal initiation and installation, with their dignity and color, were followed by the Little Theatre One-Act Play Contest. Dick Leftwich, director, and his talented cast spent long hours "treading the boards", and once again Sigma-Delphi won first place from strong competition. Soon after "Old Man Minnick" took his place in the long list of successful three-act plays presented by this society. To Miss Helen Graham, director, goes much of the credit for this play. Then spring came, turning students' efforts to emulate their worthy professors along less solemn channels. The annual presentation of the "Fakelty" starred the collegiate "skeletons" of "the powers that be", and right merrily did they dance out from under their sober caps and gowns.

Intramural basketball saw active Delphi participation. Although the "cellar door" yawned wide for a while, the team was well up in the ranks when the season ended.

The traditional spring formal and picnic breakfast are the final entries on the long list of activities by these societies for the year 1940. It is a year marked as one of the most successful and worthwhile in Sigma-Delphi's proud history.

"Boys and Girls Together": Krehbiel, Baty, Dilworth, Zahn, Young, M. Thorne
 Lookout Troup No. 13: Benton, Seyb, E. Kiddoo, Richardson, Roderick
 Conversation piece: D. Birchenough, W. Brown, Matthew, G. Beck, Miller
 From the Society Notes: Dillee, Mossman, Hoyt, Ebright, Bland
 Homeward Bound: Leftwich, J. Ryniker, Marj. Matthews, Dungan, A. Ryniker, Marg. Matthews
 Pledges await initiation: Deets, Warren, Sibley, Nossaman, Eckel
 Before: M. Anderson, Stanley, Harnden, Hollibaugh
 And After: MacDonald, MacKay, Salser, Baird



Ready men: "We-wi-wo!": L. Hendricks, C. Jones, Stein, Riebe, Harrison
 I've got your number: Mackey, Moore, Mur. Smith, J. Doe, Elder
 No "Union" trouble here: Hoar, Kreie, C. King, Garey, Hubenett
 To Sigma-Delphi: Broadie, Nisbet, Grossman, L. Johnson
 Five good men and true: Voran, B. White, Carrier, R. Thorne, Gulick
 Round the rotunda: Rinehart, Stiner, M. Dieterich, Toner, H. Hendricks





Alma Mater

Far above the Walnut Valley,
On a lofty height,
Stands our noble Alma Mater,
Bathed in golden light.

Chorus:

Lift the chorus, speed it onward
Over hill and dale;
Hail to thee, beloved Southwestern,
Alma Mater, hail!

Far above the stir and bustle
Of the busy town,
Reared against the arch of heaven,
Looks she calmly down.

To the heights she calls us daily,
Alma Mater dear,
Heights of knowledge, hope and courage,
Free from doubt and fear.



REX
Photog
pho
REX

W
to catch
on the
it for ad
done, as
grievous
a fervent

The
business
three sal
staff, and
Albright
to Harry
appreciat
son, staff
Stitt, Ea
Publicatio
conventio

But
tried to re

Jinxography

Southwestern's family car • It made us see Scarlett • "Far above the Walnut Valley" with the CAA boys • Smith Hall china and silver laundry • "Ma, he's making eyes at me", cries Baby Lorene • "Any likeness to the student prexy is merely coincidence", Huff insists • Institution in brown paper, the Smith Hall sack lunch • Coach Nolan surveys the "spring crop" • The most popular man on the hill • "Long may it wave" • Crow and Seevers, Smith's step-children • "It's the little things that count", File tells Wadlow • "Sultan" Green in his element • "Joe College" and the girl friend • Ring around the nosey • That Nossaman "pitches a wicked batch" • Barker has pecks of fun with Betsy

Member

K HUFF
grapher-
d w b p e l -
X HUFF

MARCIA HUBENETT
Editor
E D I T O R
M A R C I A H U B E N E T T

CLARK MOOTS
Business Manager
B U S I N E S S M A N A G E R
C L A R K M O O T S

When the last hair has been uprooted over copy writing, the last snapshot rushed through "customs" catch the 8:45 express, the last prayer said over the whole thing, the editor of a college annual sinks down the old swivel chair to write the editorial page—unless the "ten-per-cent"-ing business manager has sold or advertising, as he hopes. The editorial page is a convertible funeral elegy for the mad, glad days just he; an apology to those whose pictures were omitted or, in some cases, not omitted or who were otherwise evously wronged; an acknowledgment of the many "helping hands" that were turned to put the book out, fervent hope that the reader will enjoy the finished product.

The three men in a tub setting out on an uncharted sea had something in common with the photographer, business manager and editor of a yearbook; it is necessary to haul in the sales in each instance. Surely the ee sailors of legend had no more adventure in their "sink or swim" project than did the 1940 Moundbuilder ff, and surely they did not have the able assistants we did. To Miss Margaret Miller and Dr. Penrose S. bright, faculty sponsors, who tracked down dangling participles and advised on financial matters, respectively, Harry Womeldorf, assistant photographer, and Russell Chapin, assistant business manager, we voice our appreciation. With the second breath, we give due credit for the splendid cooperation shown by Bill Wood- y, staff artist; Jean Oncley, Anelle Trumbull, Ruth Yerkes and Bob Orahood, class editors; and Ronald t, Earl Dungan, Gerrie Tuttle, Rod Brown, Carle Dix and Herman Wandmacher, feature writers. To the olications Committee, we acknowledge the benefits of the trip to the National Scholastic Press Association nvention.

But it is to you fellow Southwesterners, who have shared with us the rich experience of this year we have d to record in your annual, that we give the 1940 Moundbuilder. It is yours; we hope you like it.

Marcia Hubenett,
Editor



Winfield Subscribers

C. R. Anthony Co., 906 Main
 Barbour-Collinson Abstract Co., 116 E. 9th
 Dr. I. W. Bean, 910½ Main
 Lester Belt Barber Shop, 103 College
 Drs. Bernstorf & Ralls, 104½ W. 9th
 Bloss, McNeish & Jarvis, 104½ W. 9th
 Brettun Hotel, 621 Main
 Chamber of Commerce, 921 Millington
 Calvert-Cheek Co., 802 Main
 Coca-Cola Bottling Co., 1215 Main
 College Hill Drug Store, J. D. Mundis, 117 College
 College Hill Service Station, L. O. Dugan, 402 College
 Dr. N. B. Fall, 905½ Main
 First National Bank, 900 Main
 Floyd's Shoe Shop, Floyd Feger, 816 Main
 Willard J. Franks, 104½ E. 9th
 Garver Brothers Book Store, 811 Main
 H. P. Gott, Gott Mfg. Co., 600 Manning
 Gray Clothing Co., 819 Main
 Hickerson's Studio, 815½ Main
 Dr. R. W. James, 103½ E. 9th
 Harry O. Janicke, 103½ E. 9th
 Drs. Kelley and Hawke, 104½ E. 9th
 M. B. Kerr Co., 112 E. 9th

King's Cab Service, 1302 E. 6th
 Rev. C. A. Kitch, 303 E. 11th
 LaGonda Hotel, 222 E. 9th
 Jack Lane Chevrolet Co., 115 W. 8th
 Drs. Martin and Hilfinger, 103½ E. 9th
 McConn Sisters Bakery, 116 E. 10th
 Morris Funeral Home, 803 Loomis
 Pettit Cleaners, 114 E. 8th
 Pierce's Book Store, 810 Main
 Elmer Z. Reeve, Winfield Bus Service, 1403 Olive
 Regent Theatre, 1022 Main
 V. J. Rosecrans, 122½ E. 9th
 E. H. Ruppelius, 808 Main
 Sheneman Meat Market, 917 Main
 Drs. Snyder, Jones, Snyder & Snyder, 103½ E. 9th
 P. J. Sonner, Sonner Burner Co., 418 E. 6th
 Stuber Brothers, 1110 Main
 Fred Study Clothing Co., 820 Main
 Ira Stutzman, Optometrist, 103½ E. 9th
 Drs. Truesdell & Truesdell, 103½ E. 9th
 Winfield Dairy and Independent Ice Co., 114 W. 11th
 Winfield National Bank, 901 Main
 Winfield Steam Laundry, 612 Main
 Yellow Cab, 312 E. 9th



FRUHAUF SOUTHWEST UNIFORM CO. WICHITA, KANS.

Designers and
 Manufacturers
 of fine

BAND UNIFORMS

WRITE US FOR SKETCHES & PRICES



Carpenter Air Service

BILLIE D. CARPENTER, Operator

Cub Sales \equiv Charter Service

ELEMENTARY AND ADVANCED INSTRUCTION

The Carpenter Air Service, together with the Winfield Municipal Airport, is proud to announce that their first year has been one of marked success. The operator, who holds a commercial pilot's license with both a one and a two-S rating, has this year been flight instructor for one of the highest ranking units of college participants in the Civilian Pilots' Training Program in this state. Ten college students, as well as several Winfield citizens, have learned to fly during the past winter.

Let us demonstrate the best in the line of light service planes. We can also quote you reasonable prices on air trips, save time and worry by flying your longer business trips.

For information, address the Carpenter Air Service, Winfield, Kansas.

Our Real Selling Begins *after* the Contract is Signed



In too many cases, the actual signing of a yearbook printing contract is the high point in the efforts of the printer.



But when a contract is awarded to Midland, the printer's real effort does not begin until *after* the contract is signed.



Midland always thinks of the future. The one best way to "sell" *future* staffs is to treat the *present* staff well.



The only way to treat an annual staff well is to give hammer-and-tongs service, and to deliver thoroughbred quality.



There's little cleverness in that kind of selling, but clever selling won't build a record such as Midland's: 26 years of successful yearbook service, without a serious flaw in a sparkling string of *annuals*.



The Mark
of
Quality

MIDLAND PRINTING COMPANY
Jefferson City, Missouri



One of these days

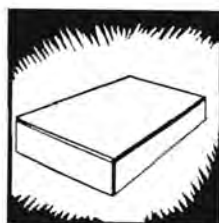
(sooner than you think) you'll be buying printing plates.

Against that day, fix in your mind the name of **BURGER-BAIRD**. It will then be a more important fact to you than dates (historical—not the other kind) or irregular verbs or formulae.



For while there are other good engravers, there is only one Burger-Baird.

Good plates? Yes, the best, and pride in their craftsmanship. Prompt with them, too.



But the main thing that keeps Burger-Baird the best known name among middle-west engravers seems to be—well, call it "savvy." It means interest and understanding, not merely for the engravings, but for your larger objectives as well.

People seem to like that, and so, no doubt, will you. Keep us in mind, won't you?



BURGER-BAIRD ENGRAVING CO.

Graphic Arts Building

10th & Wyandotte Streets

KANSAS CITY

Index

	Page
Adams, Eugene	47
Adams, Joe	47, 60, 66
Akers, Lois	36, 72
Albright, Dr. Penrose S.	30, 32, 69, 80, 82
Allen, Bill	43, 104, 105
Allen, Mrs. Faye	53
Allen, Dr. Leroy	32, 76, 82
Allen, Max	47, 60, 108, 111
Allen, Victor	47, 104
Allen, Warren	36, 84, 89, 101
Ames, Robert	53
Amrine, Robert	36
Anderson, Dr. Annette	30, 32, 78
Anderson, Ann	43, 78, 108, 111
Anderson, Fredonia	47, 85, 108, 109
Anderson, Marion	43, 108, 113
Anderson, W. C.	56
Applegate, Hildred	72
Archer, Mrs. Edith	56
Austin, Robert	47, 60, 61, 60, 90
Austin, Virginia	29, 36, 72, 78, 84, 85, 86, 91, 104, 105, 106
Backus, Tom	43, 78, 81, 82, 86, 90, 104, 105, 106
Baden, Adelaide	36, 78, 81, 85, 100, 104, 106, 107
Baird, Ray	43, 78, 81, 108, 113
Baker, Homer	53, 90
Baker, Dr. J. Thompson	32, 76, 82
Baker, L. C.	56
Banks, Jack, Jr.	40, 86, 104
Barbour, Hobart	32
Barker, Ben	40, 82
Barnes, Alfred	40
Baty, Clara	47, 91, 108, 113
Baughman, Loyd	47, 86, 108, 111
Baxter, Edward	47
Baxter, Marjorie	43, 72, 78, 87
Beach, Gerald	53
Bean, Marvin	43, 69, 72, 85, 86, 108, 111
Beck, Annabel	43, 70, 72, 77, 84, 87, 108, 109
Beck, Gerald	47, 69, 82, 84, 108, 113
Beck, Mary Lou	29, 47, 71, 86, 91, 108, 112
Beeman, Maxine	47, 108, 111
Beeman, Viola	36, 76, 77, 78, 108, 111
Belt, Edward	40, 89
Bender, Calista	53, 87, 91, 104, 107
Benjamin, Florabelle	40
Benton, Dwight	40, 69, 85, 89, 92, 96, 108, 110, 113
Bernheisel, Charles K.	32, 76, 78
Berry, Vera	40, 72, 77, 78, 87, 96, 104, 105
Bertsch, Dr. C. V.	32
Binford, Joseph	40, 78
Birch, Dorothy	43, 77
Birchenough, Betty	47, 86, 108, 111
Birchenough, Don	36, 69, 70, 72, 108, 110, 113
Bland, Geneva	36, 77, 82, 108, 113
Bloss, James	47, 84, 104, 107
Bofes, Dan	43, 74, 92, 108, 109
Bourquin, Mrs. Frances	29
Bowlby, Dorothy	47
Boyle, O. A.	56
Brainard, Edith	32
Bray, Rachel	36, 72, 81, 108, 109, 110
Bridgewater, Freda	29, 40, 88, 91, 108, 109
Briggs, Ralph	32
Broadie, Wanda	47, 108, 114
Brothers, Kenneth	47, 66
Brown, Bill	40, 78, 85, 86, 89, 104, 106, 107
Brown, C. O.	32, 86
Brown, Grover	47, 66, 69, 71, 108, 111
Brown, Ronald	43, 75, 80, 85, 86, 89, 104, 107
Brown, Warren	43, 81, 89, 113
Brownlee, Mary Ellen	36, 69, 70, 78, 82, 87, 102, 103, 104, 105, 106
Brummert, Dick	43, 66, 85, 86, 89, 90
Buchanan, Frances	47, 84, 85, 108, 111
Buck, Madeline	47, 91
Burdette, E. Marie	33
Burgess, Marie	43, 78
Bursack, Kenneth	40, 82
Burt, Dr. Charles	33
Campbell, Barbara	43, 87, 91, 104, 105
Carlton, Billy	43
Carpenter, Billie D.	33, 82
Carrner, Joe	36, 74, 108, 114
Cashurn, Mrs. Mabel	29, 92
Cave, Barbara	47, 78
Caywood, Albert	47, 66, 104, 105
Chapin, Russell	43, 69, 78, 80, 82, 108, 112
Chapman, Wilma	47, 85
Chavez, Robert	43
Christy, R. B.	56
Cloud, Lillian	33, 59, 72, 76
Cobb, Mrs. Edna	29, 77
Coe, Joseph E.	56
Compton, Vivian	43, 72, 78
Condon, Orville	72
Cooper, Don	33, 59, 60, 65
Cooper, Wyatt	53

	Page
Couch, Dean	36, 82
Couch, Dwight	47
Countrymen, Glenn	36, 66
Countrymen, Marcielle	47, 72, 108, 111
Coyle, Marian	33
Cox, Leo	47
Crabb, Harvey	36, 76, 78, 108, 109
Crane, Frances	47, 104
Crow, Howard	47, 89, 104, 106
Crow, Maxine	36, 76, 88, 91, 98, 108, 111
Dalbom, Lou	48, 69, 74, 88, 91, 108, 109
Daughenbaugh, Eileen	48
Daughenbaugh, Kathryn	48
Daughenbaugh, Russell	40, 76
Daughenbaugh, Vernie	40, 77
Davidson, Robert	53
Davis, Cornyn	40, 85, 86, 88, 91, 104, 105, 106
Davis, Herbert	48, 84
Davis, Kathryn	36, 91, 104
Dayton, Katharine	48, 71, 91, 108, 109
Deal, T. M.	36
Dean, Mary Jane	40, 72, 78, 104, 107
Deekert, John	40, 65, 81, 92
Dees, Levi O.	33, 84
Deets, Harold	48, 84, 108, 113
Dellinger, Walter	36
Demaree, Mildred	40, 82, 84, 108, 110, 111
Demore, Mrs. Ella	56
Deer, Roy	50
Detter, C. O.	20
Dielmann, Edith	33, 72
Dielmann, Fern	33
Dieterich, Betty Lou	48, 69, 84, 86, 108, 112
Dieterich, La Jeune	40, 84, 104, 109
Dieterich, Maxine	29, 43, 69, 70, 71, 78, 86, 88, 97, 108, 114
Dieterich, Theodore	40, 108
Dilce, Maudine	48, 108, 113
Dillman, Neal	40, 60, 61, 69, 40
Dilworth, Jean	47, 48, 85, 86, 88, 108, 117
Ditamore, Ora Mae	43, 72, 84, 104, 105, 106
Dix, Carl	43, 64, 65, 80, 81, 90, 96
Dotson, Billy	43, 82, 108, 109
Doty, Quentin	40, 60, 61, 72, 90
Dubois, Bert	36
Dudits, William	46, 93
Dunbar, Dorothy	47, 48, 84, 85, 88, 108, 109
Duncan, Loren	47
Dungan, Earl	36, 69, 70
	78, 80, 82, 84, 85, 86, 89, 102, 103, 108, 110, 111
Dunlap, Bert	72
Dunlap, Dale	48, 72, 78, 82, 104, 105
Dunlevy, R. B.	11
Du Pont, Maurice	48, 91
Durnil, Margaret	29, 43, 69, 77, 87, 91, 96, 108, 109
Eansom, James	48, 79
Eansom, Roland	48, 79
Eaton, Martha	36
Elbright, Margaret	48, 77, 88, 108, 111
Eckel, George	53, 84, 108, 111
Eckel, Howard	36, 69, 72, 81, 84
Edwards, Grace	76, 79
Elder, Gale	43, 108, 114
Elliott, Charles	37, 104, 109
Embers, Mabel	40, 77, 78, 81, 83
Erhart, Ted	43, 72, 85, 89
Evans, Evan E.	31
Evers, Helen	34, 76, 77, 79
Ewing, Ann	48, 82, 91, 108, 111
Feir, Allen	46
File, Leo	48, 86
Fink, Ellis	72
Fisher, J. C.	37, 81, 89, 104, 107
Fleener, Robert	37, 81, 89, 104, 107
Forrester, Jack	37, 81
Fox, Gertrude	43, 79, 86
Frank, Kermit	43, 60, 61, 90
Franks, Kathleen	72
Franklin, Kenneth	43
Franklin, Laura	48, 71, 73
Franklin, Matella	47
Frary, Arthur	40
Frederick, Russell	47
Frechburg, Laura Lee	48, 84, 108, 109
Frey, Frances	77
Fry, Lenora	43, 108, 111
Fugit, Price	48, 64, 67, 90
Fulk, Dorothy	40
Funston, Mary Warner	37, 77, 104, 109
Funston, Scott	17, 72, 85
Funston, York	48
Gardner, Barbara	37, 70, 71, 76, 82, 84, 88, 91, 108, 109
Gardner, Nelson S.	48, 86, 87, 108, 114
Garey, John	40, 71, 72, 77, 78, 108, 109
Gee, Marjorie	40, 71, 72, 77, 78, 108, 109
George, R. L.	40

	Page
Gere, Willard.....	44
Gernberger, LeRoy.....	40, 66, 69, 78, 82, 104, 105
Gibson, Mrs. P. W.....	72
Gilbert, James.....	40, 66, 71, 84, 90
Gillespie, Victor.....	37, 60, 61, 90
Gilliland, Jack.....	53, 60
Gitting, Louis.....	48, 82
Goff, Henry.....	56
Graham, Helen.....	34, 75
Graw, C. M.....	56
Grimes, Wm.....	56
Green, Charles.....	37, 69, 82
Green, Robert.....	40
Grossman, Barbara.....	37, 72, 78, 81, 108, 114
Groves, Lucile.....	37, 72, 108, 111
Gulich, Jesse.....	40, 70, 82, 96, 108, 114
Guy, Charles.....	61
Guy, Lawrence.....	48, 60, 104, 106
Gylling, Grace.....	29, 37, 78, 91
Haines, Robert.....	37, 76
Hall, Helen.....	48, 72
Hallman, Mrs. Pearl.....	34
Hamm, Stanley.....	48
Hanna, Melvil.....	53
Hankins, Joy.....	48, 88, 91, 108, 111
Hankins, Glenn.....	48, 60, 61, 66, 90, 108, 113
Harris, I. D.....	56
Harrison, John.....	48, 72, 84, 86, 89, 108, 114
Harrison, Ruth.....	49
Hart, Jack.....	64, 65, 90
Hartley, Warren.....	44
Hartford, Kent.....	49, 92, 108, 111
Hawkins, Esther.....	49, 85
Haw, Wendell.....	41, 89
Helm, Virginia.....	49, 104, 105
Helm, Rhea.....	49
Henderson, Paul.....	44, 72, 85, 86, 104, 107
Hendricks, Hazel.....	37, 82, 88
Hendricks, Herbert.....	41, 74, 108, 114
Hendricks, Lee.....	49, 74, 114
Hendrickson, William.....	49
Henry, Ray.....	53, 60, 66, 90
Herr, Ada.....	34, 76
Hiles, Ben.....	44, 60, 61, 90
Holbach, Kenneth.....	49, 71, 78, 82, 104, 105
Holmes, Mrs. Linnie.....	29
Holmes, Norton.....	41, 82, 108, 110, 111
Holt, Mrs. Lois.....	29
Holyard, Ruth.....	37, 78, 104, 107
Hoskins, Charles.....	44, 66, 81
Hoskins, Ida.....	41, 72, 78
Hovner, Vernice.....	49
Hoy, Maxine.....	44, 86, 108, 114
Hoy, Verne.....	49
Huddaugh, Bette.....	44, 108, 113
Huddaugh, Edith.....	44
Hudson, Dorothy Alice.....	44, 72, 77, 78, 85, 104, 107
Hull, Freda.....	49, 86
Husard, Paul.....	44, 89
Hut, LeRoy.....	49, 84
Hut, Loretta.....	49, 108, 113
Hulett, Marcia.....	29, 37, 70, 75, 80, 87, 91, 102, 103, 108, 110, 114
Hudson, Emma Jane.....	49, 104, 107
Hudson, Homer.....	44, 85, 86, 108, 111
Hull, Rex.....	37, 80, 82, 108, 109
Hull, Glenn.....	37
Hull, Kenneth.....	44, 72
Hull, Wayne.....	49
Humbert, Margaret.....	44, 87, 91, 104, 106
Hunt, Ida Clawson.....	34, 72
Hunt, Roy.....	44
Husman, Mrs. Grace.....	29, 91
Husman, Lois.....	49
Hussey, Nancy.....	49, 69, 84, 87, 96, 108, 109
Hussey, Edward.....	47, 49, 84, 86, 89, 108, 109
Hussey, Eva.....	44, 72, 84, 104, 107
Hussey, Franklin.....	44, 84, 92, 108, 111
Hussey, Lucille.....	49, 77, 81, 108, 114
Hussey, Ruth.....	29, 44, 91, 104, 105
Hussey, Clifford.....	49, 92, 108, 114
Hussey, Clyde.....	41
Hussey, Robert.....	49, 108, 111
Hussey, Ted.....	44, 111
Hussey, Mable.....	49, 104, 107
Hussey, Asher.....	49, 82
Hussey, Frank.....	66
Hussey, Keith.....	49, 84
Hussey, Joe.....	53, 84, 89, 104, 105, 106
Hussey, Henry.....	56
Hussey, Elsie.....	49, 72, 84, 108, 113
Hussey, Lorene.....	36, 37, 70, 77, 78, 88, 91, 103, 108, 109, 110
Hussey, Rosemary.....	41, 108, 112
Hussey, Arthur.....	41
Hussey, Carol.....	37, 72, 88, 108, 114
Hussey, Cecil.....	49
Hussey, Lynn.....	44, 71, 72
Hussey, Albert E.....	56
Hussey, Joe.....	44, 84, 104, 105
Hussey, Ruth.....	49, 91, 104, 105
Hussey, Chas. A.....	56
Hussey, Clarence.....	49, 72

	Page
Kitzelman, C. H.....	29
Klink, Edith.....	29
Knepper, Margery.....	41, 78
Krause, Nora.....	44, 72, 86, 91
Krehbiel, Karl.....	49, 84, 86, 89, 108, 113
Kreie, James.....	49, 92, 108, 114
Krell, Harold.....	49, 60, 72, 104
Krell, J. D.....	37, 75, 104, 105
Lallement, Vernon.....	37, 66, 72, 78, 84
Lamore, Nina.....	49
Lawrence, Fred.....	44, 85, 86
Lawrence, John Eva.....	50
Lawrence, Robert.....	50
Leavel, Mrs. Pearl.....	72
Leavengood, Luther O.....	31, 34, 85
Leitch, Richard.....	41, 69, 70, 74, 75, 76, 92, 108, 110, 113
Lehman, Frances.....	44, 78, 87, 91, 104, 105
Lehr, Glennys.....	44
Lewis, Betty.....	44, 72, 78, 104, 107
Liming, June.....	44, 72, 77, 84, 104
Liming, George.....	53, 104, 107
Lippard, Orine.....	44, 78, 84, 85, 91, 104, 105
Little, Albert.....	50
Little, Frank.....	37, 78
Little, Marjorie.....	50, 91, 104, 105
Loucks, Charlotte.....	53
MacDonald, Emerson.....	41, 90, 108, 113
MacGregor, Dr. Robt Roy.....	30, 34, 76, 78
MacKay, George.....	50, 60, 61, 90, 108, 113
Mackey, Anna Laura.....	50, 77, 78, 88, 108, 114
Magnusson, Karl.....	41
Malone, Pat.....	44, 60, 61, 66, 90
Marine, Dale.....	37, 60, 61, 69, 70, 90, 102, 103
Marsh, Dr. T. Reese.....	28, 76, 78
Martin, Delmar.....	44, 71, 72
Martin, Rudolph.....	37, 60, 61, 66, 70, 90
Martin, Suzanne.....	104
Masuda, Miyuki.....	38, 102
Matthew, Loreen.....	44, 84, 85, 108, 113
Matthews, Glenn.....	45, 71, 72, 85, 108, 112
Matthews, Margaret.....	45, 72, 78, 84, 108, 113
Matthews, Marjorie.....	50, 84, 108, 113
Maurer, Blaine.....	72
Maxwell, Eugene.....	45
McCaftree, Kenneth.....	38, 76, 82, 102, 104, 106
McCall, Evan.....	38, 75
McCollum, Marjory.....	29, 50, 86, 91, 104
McCoy, Joe.....	41, 60, 61, 64, 65, 90
McCue, James.....	50, 104, 105
McDermott, Martha.....	38, 85, 87, 104, 107
McGhay, Mary Margaret.....	45, 77, 84, 85, 86, 108, 109
McGinness, Earl.....	38, 71, 72
McGown, Betty.....	72
McIntosh, Elinor.....	50, 72
McIntosh, Margaret.....	38, 72, 85
McKnight, Carmen.....	45, 81
McNabb, Marian.....	50, 84, 104, 105
McNeil, E. W.....	29, 56
McNeil, Mrs. L. E.....	29
McNeil, Mary Ruth.....	45, 69, 71, 72, 74, 88, 108, 109
McNeish, Mrs. George.....	72
McNutt, LaVerne.....	50, 72, 78
McPeck, Janis.....	50, 85, 86, 108, 111
McSwain, Wilhemina.....	38
Mead, Dorothy.....	50, 104
Meador, Mary Ellen.....	50, 85, 108, 111
Meinhardt, Dr. Emilie.....	34
Mendenhall, Imogene.....	41, 78, 91
Merriam, Esther.....	41, 72, 85
Merriam, Robert.....	50
Messmer, Maudene.....	50, 88, 91, 104, 105
Metting, Harold.....	45, 66
Metz, Mary Rachelle.....	50, 91
Miller, Azalea.....	50, 84, 85, 86, 88, 91, 108, 113
Miller, Elizabeth.....	76, 78
Miller, Florence Mae.....	53, 72, 87
Miller, Heber.....	38, 76
Miller, Margaret.....	34, 78, 80, 81
Miller, Rosemary.....	50
Miller, Virginia Phillips.....	29, 45, 72
Mitchell, Lena Anderson.....	38, 70, 72, 78, 81, 102, 108, 109
Montgomery, Harman.....	60, 61, 66, 90
Monypeny, Wm.....	4, 34, 59, 64, 65, 76, 90
Moore, Douglass.....	45, 66, 108, 114
Moore, Phil.....	50, 64, 65, 90
Moors, Clark.....	38, 69, 70, 78, 80, 82, 89, 99, 102, 103, 108, 109, 110
Morford, George.....	45, 60, 61
Morris, Eva.....	50, 84, 87, 108, 111
Morris, Jim.....	38, 78, 82, 84, 104, 105, 106
Mossman, Cecile.....	50, 74, 77, 88, 108, 113
Mossman, Dr. Frank E.....	27, 56, 76
Mundinger, Norman.....	41, 84
Murray, Alvin W.....	35, 76
Murray, Henry.....	50, 84
Myer, Willard.....	38, 85, 86
Nantz, Clifford.....	45
Nelson, Dorothy.....	53
Newberry, Alvie.....	45, 92, 104, 105, 106
Newlin, Jane.....	45, 78, 104, 105
Nichols, Helen Jeanne.....	53
Nicholson, Mary.....	41, 72, 84, 104, 107

	Page
Nisbet, Bill	50, 84
Nolan, Gerald	50, 60, 66, 86
Norton, Dick	53, 60
Norton, Maurice	50
Nossaman, Earl	50, 60, 108, 113
Notestine, Thomas	45
Nuckolls, Virgil	45, 60, 61, 90
Nurse, Agnes	29, 41, 69, 77, 84, 108, 109
Nurse, Virginia	45, 77, 78, 84, 86
Nusser, Alberta	41
Nusser, Maleta	53
Oliver, Jess	50, 60, 61
O'Neil, Ward	72
Oncley, Jean	38, 70, 80, 88, 108, 111
Oncley, Lawrence	35
Orahood, Robert	50, 80
Osen, Mrs. Zoe	29
Osterhout, Don	38
Orey, Lawrence	53
Ott, Lawrence	51, 82
Overbey, Wanda	38
Owen, W. W.	56
Painter, Clifford	50, 60, 61, 66, 90
Palmer, Charles	50, 61
Palmer, John	51
Parker, Mrs. Grover	72
Parker, Margaret	38, 78, 81, 104, 107
Parsons, Elton	53
Patton, Leo	41, 69, 82
Poden, Helen	45, 87, 91, 108, 111
Pence, Don	85
Pennick, Max	45, 85, 86, 80
Perkins, Cora Lou	45, 77, 78
Peterson, James	51, 104, 107
Phillippi, Marjorie	45, 91, 108, 111
Pickens, Pearl	51, 72
Pickering, Irene	41, 78
Pickering, Jimmy	41, 89, 92, 108, 111
Pinnick, Harry	51, 66, 82
Plank, Marjorie	51, 72, 84, 104, 105
Plum, Dr. William B.	28, 70, 82
Politzer, Frank	53
Porter, Cecil	38, 64, 65, 90
Potter, Mary Kathryn	45, 77, 86, 88, 91, 104, 105
Poundstone, W. J.	28, 76, 90
Priest, Carl	51
Prock, Mary Evelyn	51
Ragan, Rayetta	51
Ratcliff, Leon	38, 82
Reccius, Rex	38, 78
Redic, Mrs. Cora	35
Reeves, Melvin	41, 66, 90
Reimer, Glenn	38, 72, 81, 91
Reimer, Veneta	51, 72, 86, 91, 104, 105
Resler, Joyce	51, 72, 85, 91, 104, 105
Reynolds, George	45, 85, 86, 89, 111
Richardson, Adrian	51, 92, 108, 113
Rickards, Jack	53, 66
Rickers, Edith	38, 77, 78, 91, 108, 109
Riebe, Louis	38, 108, 114
Riggs, Lorraine	45, 77, 78, 81, 108, 109
Rinchart, Joe	51
Roark, Basil	41, 84, 85
Robbins, Ruthe	51, 88, 91, 108, 111
Roberts, J.	51, 60
Robinson, Doris	51, 87, 104, 107
Robinson, Frances	38, 75, 78, 87, 104, 107
Roderick, Bryce	51, 60, 61, 66, 90, 108, 113
Rohl, David	38, 60, 61, 90
Ross, Richard	39, 82, 89, 108, 109
Ryman, Bessie	53
Ryniker, Anita	51, 85, 108, 113
Ryniker, Jeanette	51, 84, 108, 113
Salsar, Everett	53, 108, 113
Sargeant, Leona	45, 72, 91
Schaefer, Drayton	53
Schemahorn, Rachel	51, 104, 107
Schlenz, Pauline	45, 91, 108, 111
Schriver, Marguerite	51, 77, 82, 88, 108, 111
Scott, Mrs. O. B.	35
Seal, Margaret	42, 72, 78, 84, 91, 104, 107
Seay, L. C.	35, 59, 60, 66, 90
Seevers, Helen	45, 87, 91, 108, 109
Sellers, Grace	35
Setzkorn, Eugene	39, 76
Seyb, Marion	51, 74, 92, 108, 113
Shait, Marjorie	45, 72, 78, 87, 91, 108, 111
Schappel, V. O.	42
Sheel, Margaret	51, 88, 108, 109
Shepherd, Robert	51, 66, 104, 107
Sherring, Victor	42, 72, 84
Shields, Gale	42, 60, 75, 78, 104, 105
Shifflet, Dean	51
Shook, Phyllis	40, 42, 70, 71, 74, 75, 76, 78, 82, 88, 96, 104, 105, 106
Shrauner, Bob	42
Shuman, Elsie	51, 84
Shumate, Edmond	39, 71, 82, 108, 111
Sibley, Gerald	42, 66, 82, 108, 113
Simpson, Francis	51, 60, 61
Simms, Ward	39, 108, 111
Smith, Bruce	42

	Page
Smith, Don	51, 64, 65, 90
Smith, Doris	45, 72, 81
Smith, James	51, 104, 107
Smith, Margaret	42, 69, 70, 71, 72, 77, 78, 87, 104, 107
Smith, Muriel	45, 71, 72, 84, 88, 108, 114
Smith, Ralph	39, 64, 65, 69, 90
Smith, Walter	51, 72, 84, 86, 92, 108, 112
Smith, Winifred	42, 91, 104, 105
Snook, Allen	45, 82
Snyder, Harold	42, 82, 108, 114
Snyder, Hugh	51
Sonner, P. J.	56
Sooter, Joyce	51
Spicer, Kenneth	39, 88
Spitze, Dorothy	39, 70, 77, 78
Spitze, Leah	52, 72
Springer, Ivan	52, 91, 108, 111
Stanley, Margie	42, 91
Stauffacher, Mary	52, 92, 108, 114
Stein, Wesley	52, 92, 108, 114
Steinberg, Merle	42, 60, 61, 64, 65, 90
Stevens, Harold	42, 60, 61, 64, 65, 90
Stevens, Lawrence	52, 88, 91, 108, 109
Stevick, Bette	39, 78, 84, 88, 91, 108, 109
Stevick, Dorothy	43, 45, 80, 88, 91, 108, 109
Stevick, Margaret	42, 85, 86
Stiner, Bernard	52, 85, 108, 114
Stiner, Olive	47, 52, 80, 104, 107
Stitt, Ronald	39, 76, 78, 82, 102, 108, 110, 111
Stollie, Mildred	52
Stoops, Wayne	45, 66, 81, 104, 105
Story, James	56
Struber, Ralph	107
Swartz, Bill	43, 46, 66, 69, 78, 82, 85, 86, 90, 104, 107
Switzer, D. H.	42
Swoyer, Fred	50, 82
Taylor, Francis	39, 78, 81, 108, 113
Thorne, Milton	52, 85, 86, 108, 114
Thorne, Ralph	39, 72, 78, 84, 91, 108, 110, 111
Tobias, Margaret	52, 84, 108, 114
Toner, Dorothy	39, 82, 85
Torrance, Fred	42, 69, 108, 109
Tredway, Harold	42, 72, 80, 82, 108, 111
Trumbull, Anelle	42, 64, 65, 66, 90
Trumbull, Mattie Grace	52, 64, 65, 66, 90
Tucker, Marvin	52, 64, 65, 66, 90
Tucker, Olin	52, 80, 81, 87, 104, 105, 107
Turtie, Gerrie	29, 42, 72, 78, 84, 85, 91, 108, 109
Van Gundy, Dorothy	43, 46, 81, 88, 108, 109
Van Laningham, Geraldine	35, 76
Varner, H. S., Jr.	35, 76, 78
Vinsonhaler, C. L.	39
Volkland, Eric	52, 72, 84, 85, 86, 108, 114
Voran, James	52
Wagoner, Maxine	52, 104, 105
Wagner, George	52, 72
Walker, Erva Jane	53
Wallace, Noel	52, 72, 80, 81, 84, 85, 108, 109
Wandmacher, Herman	42, 82
Ward, W. C.	29, 36
Ward, Dr. W. T.	46, 78, 84, 108, 111
Warren, Leonard	42, 72, 85, 86
Warren, Samuel	39, 82
Webber, James	39
Weigle, Lyle	46, 91, 104, 107
Wendelburg, Thelma	42, 91
Wheatley, Marion	46, 86, 91, 104, 105
Wheeler, Lena Ruth	47, 52, 71, 72, 82, 84, 85, 86, 89, 108, 114
White, Byron	28, 70, 71, 76, 77, 78
White, Chalcea	39
White, Everett	42, 71, 72, 91, 104, 107
White, Marv Louise	46, 69, 70, 71, 72, 82, 84, 86, 89, 96, 108, 109
White, Stephen	36, 39, 60, 61, 82, 90
Whitesell, Bob	46
Wilkins, William	40, 84, 85, 86, 104, 107
Williams, Martin	40, 60, 61, 90
Williams, Paul	53
Williams, Wendell	52
Willming, Ruth	46, 84, 104, 107
Wilson, Curtis	29, 42, 72, 91
Wilson, Dorothy	39, 104, 105
Wilson, Wayne	60, 61, 90
Winters, Clifford	46, 70, 71, 72, 80, 81, 82, 86, 108, 109
Womeldorf, Harry	46
Womeldorf, Paul D.	46, 82
Wood, Buddy	35, 39, 80, 83
Woodell, Joan	52, 104
Woodson, Wesley	39, 72, 82, 104, 107
Wright, Christine	72
Wright, Helen	20, 39, 76, 78, 81
Wynoff, Paul	29, 46, 72, 80, 84, 85, 88, 91, 108, 109
Yarberry, Jerry	52, 104, 105
Yerkes, Ruth	42, 72, 78, 87, 104, 106
Yorke, Patty	72
Youle, Jeanne	52, 81, 108, 111
Younce, Paul	39, 104, 105, 106
Young, Cathryn	52, 64, 69, 108, 111
Young, William	52, 91, 104, 105
Zahn, LeRoy	52, 64, 69, 108, 111
Zimmerman, Ida Belle	52, 91, 104, 105