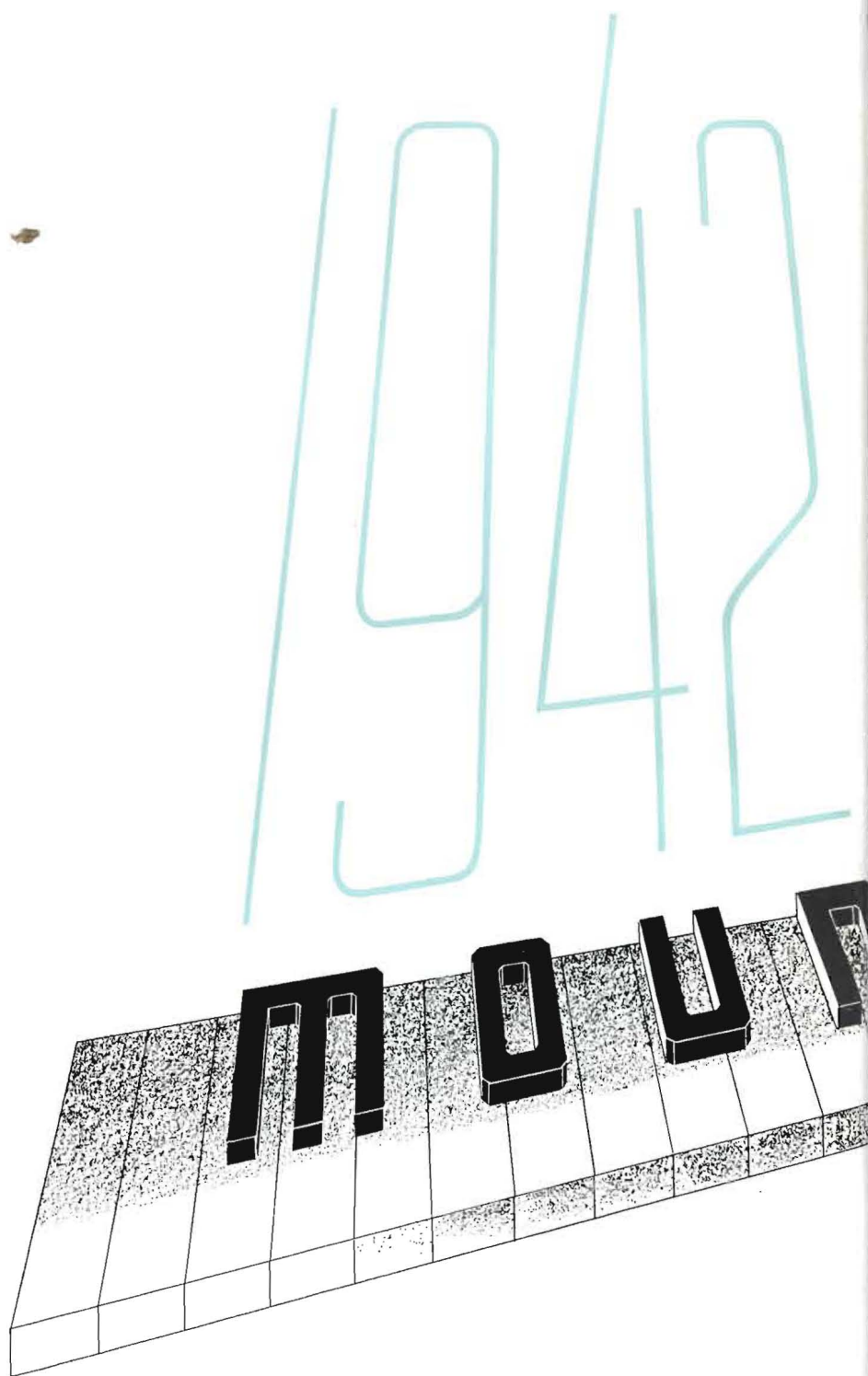


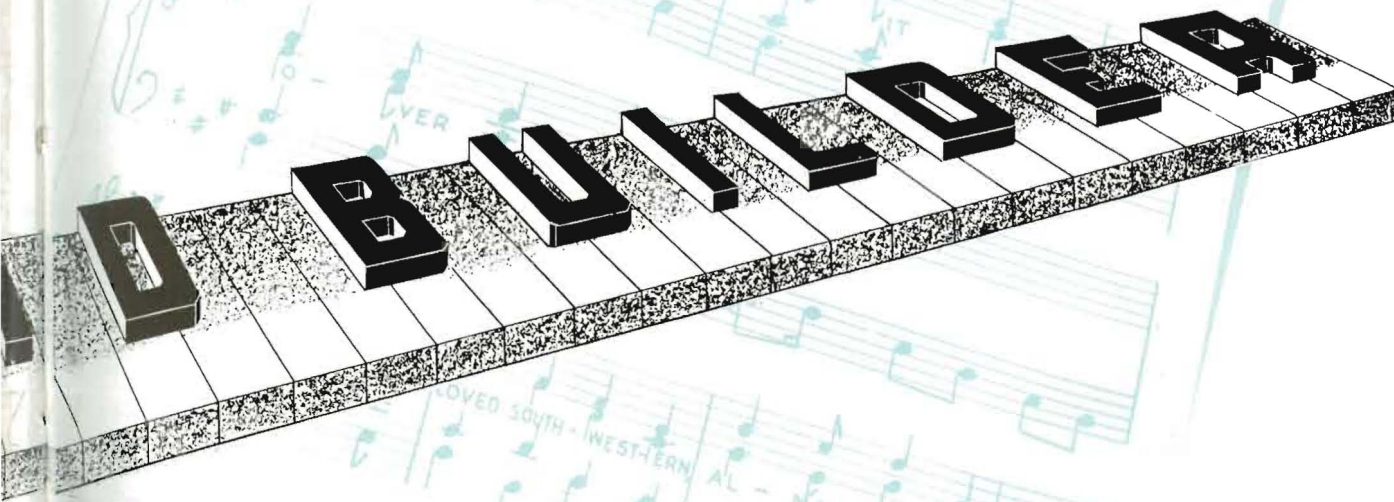
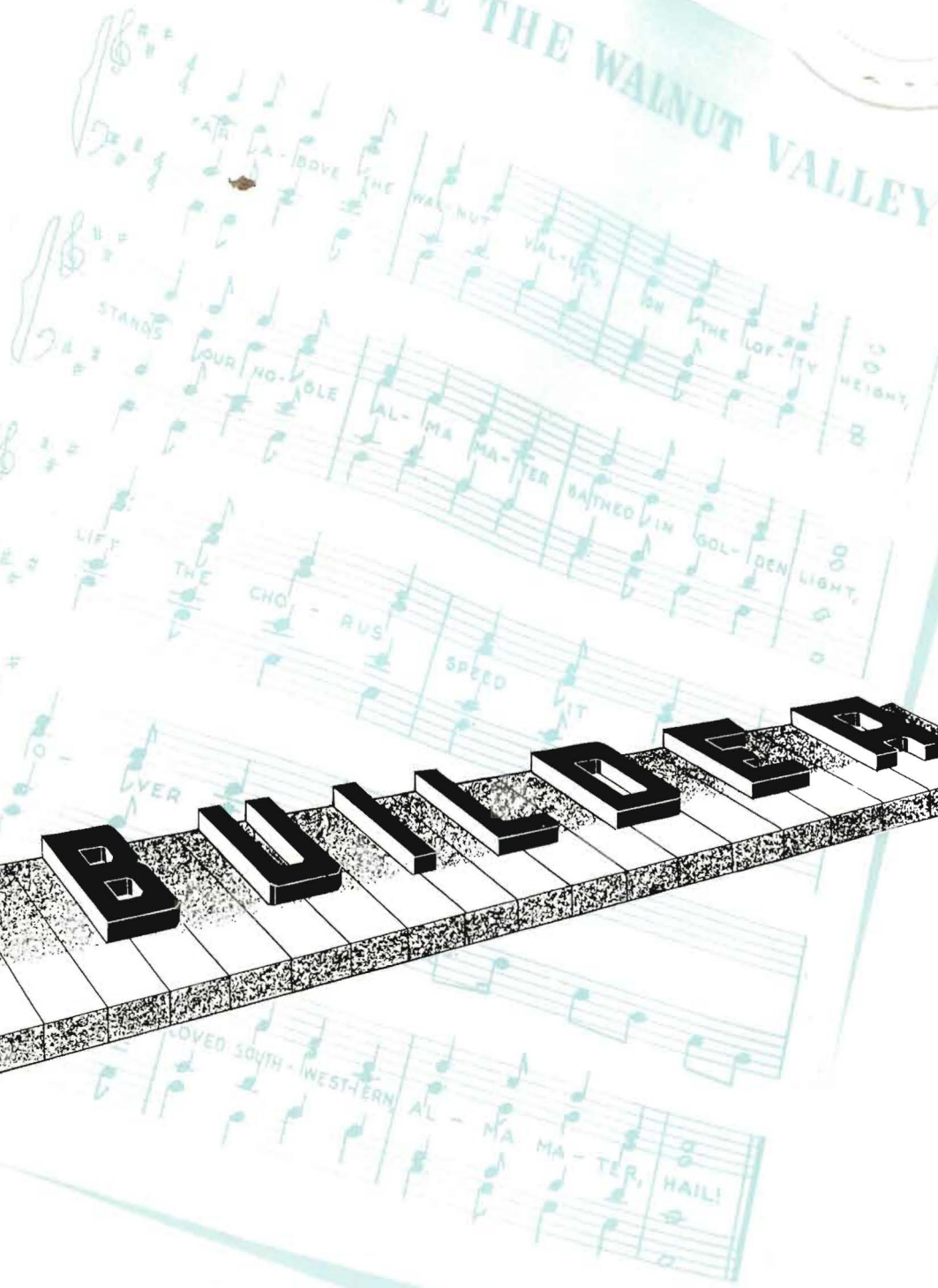
*Ex libris*

*Southwestern College at Winfield, Kansas*





# FAR ABOVE THE WALNUT VALLEY -





## A COMPOSITION IN THE MAKING

With your help we have made this year into a composition for you. For some of you its notes will be merely a photograph index. For others, your friends' transcribed notes will make of it an autograph book. For all of you, its tunes are meant to help you remember the themes of the year.

We wish to thank Miss Margaret Miller and Dr. Penrose Albright for their valuable advice and assistance. Especially do we wish to thank Mr. Bill Dillman for his unlimited time and patience. Here is a new-found friend we won't soon forget.

YLD 511  
555  
m6  
1942



TO ONE WHO BLENDS WITH  
THE *Melody* OF  
SOUTHWESTERN LIFE . . .

to a most loyal Southwesterner and one  
of her heartiest boosters, to PROF. C. O.  
BROWN, we dedicate the MOUND-  
BUILDER of 1942.





# *An Episode in Four*



PART I—MELODY MAKERS



PART II—ANALYSIS



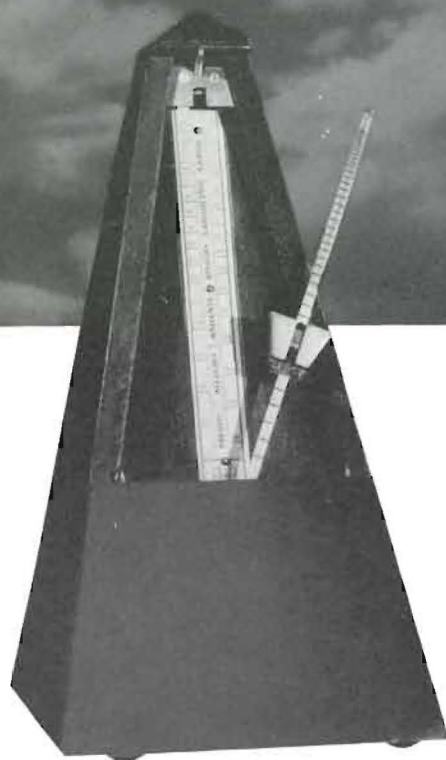
PART III—DYNAMICS



# Parts



PART IV—CYMBALISM



Perhaps the theme of this book should have been patriotic. The work of an annual, however, has progressed a long way by December 7 of any year, so it is not a simple matter to change a theme. Anyway, another annual will always follow.

This book is divided into four parts. Melody Makers are the school's personnel. Analysis shows you your activities. Dynamics are the organizations in which students can show their steam, and Cymbalism is a word coined to symbolize the powers of the campus: societies and athletics. Then follows the Story of the Year—brief, but—we hope—powerful.

# TWENTY-FOUR HOURS AT SOUTHWESTERN



HE RISES . . . . AND . . . .



SHINES . . . .



GETS CHOW . . . .



. STROLLS TO CLASS .



HELPS WITH HIS BOARD AND KEEP . . . .



. GETS KNOWLEDGE .



. PAUSES TO REFRESH .

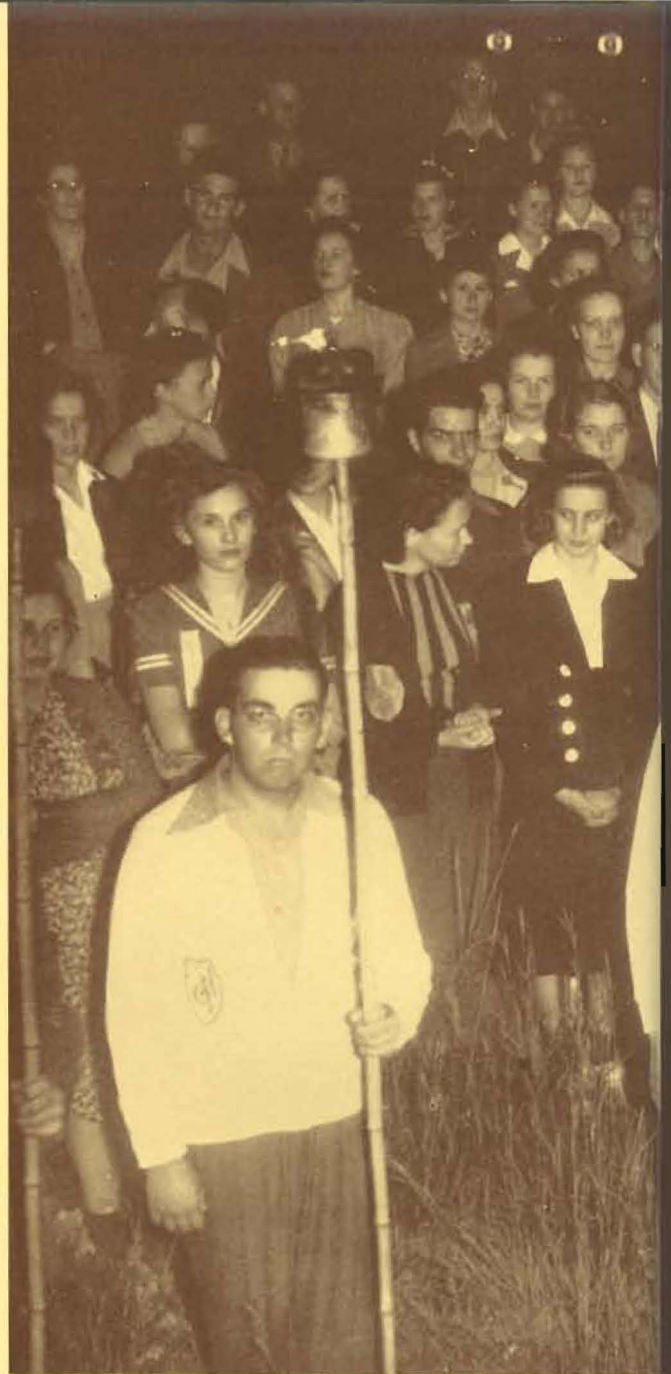


PITCHES A LITTLE WOO . . . .



AND SO ON INTO THE NITE .





M E L O D Y

♫ BUILDER  
*Musicana*



M A K E R S



# RICHARDSON HALL

Old Richardson, the product of sound principles of masonry, is symbolic of sound principles of education.



# A TRIBUTE

After twenty-four years of strenuous and devoted service to Southwestern College, President Mossman has asked to be relieved of his responsibilities.

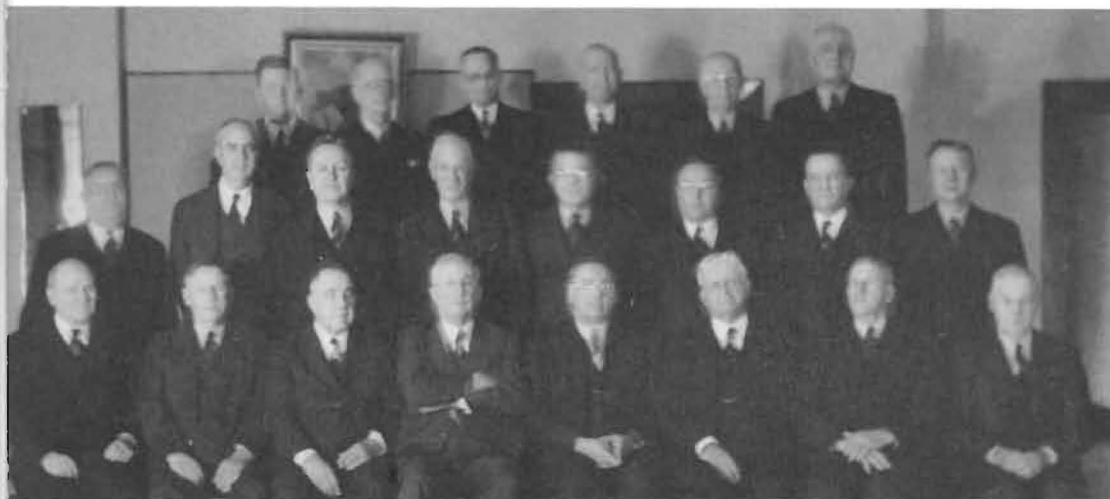
The student body of 1941-'42 joins with the student bodies of other years in paying especial tribute to this man who has given the best of his life to the promotion of Southwestern. More than being an efficient administrator, he has been personal inspiration to countless college youth.

"Prexy," Southwestern College is grateful to you.



President Frank E. Mossman

# TRUSTEES



*First row:* J. C. Fisher, Allan Felt, O. A. Boyle, President Mossman, President-elect Schofield, C. M. Gray, P. J. Sonner, A. B. Everly.

*Second row:* C. A. Kitch, I. D. Harris, R. M. Hilfinger, H. P. Gott, W. G. Anderson, P. D. Womeldorf, W. W. Owen, W. J. Franks.

*Third row:* O. R. Henderson, J. E. Coe, E. A. Hull, Walter Dellinger, N. S. Gardner, E. W. McNeil.

DEAN OF THE COLLEGE, T. REESE MARSH, in addition to teaching his classes in English literature, oversees all departments of the college.

DEAN OF FINE ARTS, LUTHER O. LEAVENGOOD, manages the Fine Arts Department, directs the Symphony Orchestra and is instructor in violin.

DEAN OF MEN, W. B. PLUM, was succeeded in his position by Mr. Clare Seay when he went to Norfolk, Virginia, to be associated with the United States Navy laboratory.

DEAN OF WOMEN, MISS CHALCEA WHITE, handles the affairs of the women students and does her part in the administration of dormitory regulations.

REGISTRAR, W. J. POUNDSTONE, besides handling his classes in education, manages the affairs of the Alumni and arranges the curriculum program.

BUSINESS MANAGER, E. W. McNEIL, has the job of managing the school's finances and balancing the budget.



*Seated:* White  
*Standing:* McNeil

Leavengood  
Poundstone

Marsh  
Plum



FACULTY: DR. PENROSE S. ALBRIGHT, Physical Chemistry and Aeronautics. DR. LEROY ALLEN, Bible, Speech, Debate. MISS ANNETTE ANDERSEN, English. MR. HOBART L. BARBOUR, Violoncello.  
 DR. CHARLES E. BURT, Biology. DR. WILLIS B. CATON, Mathematics. MISS LILLIAN CLOUD, Physical Education. MR. LEVI O. DEES, Voice, A Cappella.  
 SUPT. EVAN E. EVANS, Practice Teaching. MISS HELEN EVERS, Home Economics. MISS HELEN GRAHAM, Dramatics and Expression.  
 MRS. PEARL H. HAMILTON, Education.  
 DEAN LUTHER O. LEAVENGOOD, Violin. DR. ROB ROY MACGREGOR, History, Political Science. DR. T. REESE MARSH, English.  
 MISS MARGARET MILLER, English, Journalism.  
 MR. W. J. POUNDSTONE, Education. MRS. CORA CONN REDIC, Organ, Theory. MRS. O. B. SCOTT, Typing, Shorthand. MR. L. CLARE SEAY, Assistant Coach, Physical Education. MISS GRACE SELLERS, Piano.





MISS EDITH M. BRAINARD, Librarian. MR. HAROLD BRATCHES, Assistant Coach. MR. RALPH BRIGGS, Piano, Theory. MR. C. O. BROWN, Instrumental Music, Band.  
 MR. WILLIAM G. DIBOS, French, Spanish, German. MISS EDITH DIELMANN, Expression, Dramatics. MISS FERN DIELMANN, Piano.  
 MR. R. B. DUNLEVY, Geology.  
 MR. PAUL HENDERSON, Assistant in Violin. MISS ADA M. HERR, Sociology. MISS IDA CLAWSON HUNT, Public School Music, Voice.  
 REV. LYMAN S. JOHNSON, Philosophy.  
 MR. WILLIAM MONYPENY, Education, Basketball Coach. MR. RICHARD NOLAN, Athletics, Football Coach. MR. LAWRENCE ONCLEY, Chemistry. DR. WILLIAM B. PLUM, Physics.  
 MR. ELMER J. SPOMER, Business Administration. MISS MERLE STEINBERG, Piano. MR. C. I. VINSONHALER, Latin and English. MISS CHALCEA WHITE, Home Economics.

## Student Body Officers



Bill Dotson  
President



Marvin Bean  
Vice-President

## STUDENT

It was "keep the pep of old S. C.," said the Student Body officers, and you had to be on your toes to keep up with Prexy Dotson who was always pushing something, from Red Cross Drive to the well-planned and well-organized Homecoming. With a story always on the tip of the tongue he spread the S. C. "spirit" from Emporia to Dodge City when

he traveled with the Band and A Cappella.

Saturday mornings at 9:50 found the halls full as the students flocked to their seats for those assembly programs. Marvin Bean was responsible for the first semester programs, which were continued by Adrian Richardson when Marvin was called to the Service.



*First row:* Dix, Bratches, B. Matthews, Dr. Albright, Dotson, Yerkes, Howard, Isely, Backus

*Second row:* McGuire, K. Moore, Couchman, R. Thorne, A. Miller, C. Bender, H. Brown, Dunlap, Snyder, Beeman, P. Moore

*Third row:* Congdon, Richardson, B. Dieterich, McNeil, Light, L. Smith, Youle, S. White, Dieterich

## COUNCIL

Every Thursday evening at seven o'clock four members and two alternate representatives from each class meet to discuss current problems of the campus. Presided over by Bill Dotson this group is the medium between the students and the administration.

The Council sponsors events all through the year beginning with the Building of the Mound and ending with the Sprightly Spring Sports Spree, at which time the election returns are announced. They had charge of the Homecoming parade and activities and sponsored the selling of S. C. badges and

pennants, a new project this year.

Magazines were added to the Student Union, thus furthering the socialization program begun last year. A carol sing around a Christmas tree in the Student Union was one of their projects. They also sponsored the tea this spring for the Winfield high school seniors.

The Council was represented by a committee on the defense council. Typical of business acted upon in their meetings is the apportionment of the activity fee, and the request of teachers to dismiss classes on time.



*Top, seated:* Humburg, B. Dieterich, Miss White, Dalbom, Plank

*Standing:* Beck, McNeil, M. Smith, Fry, Potter, M. Dieterich

*Lower left, seated:* Beck, Mr. Seay, Hiebsch

*Standing:* S. White, Wandmacher, Seyb

*Lower right, seated:* Stitt, G. Brown, Boles

*Standing:* MacKay, R. Thorne, Dix

All new arrivals at S. C. are made to feel that they are immediately a part of our campus. This friendly spirit is stimulated by the Personnel Council. Each member corresponds with his group of new students before school opens and welcomes them as a friend and helper when they arrive.

Gerald Beck and Mary Ruth McNeil presided over this year's Council, assisted by

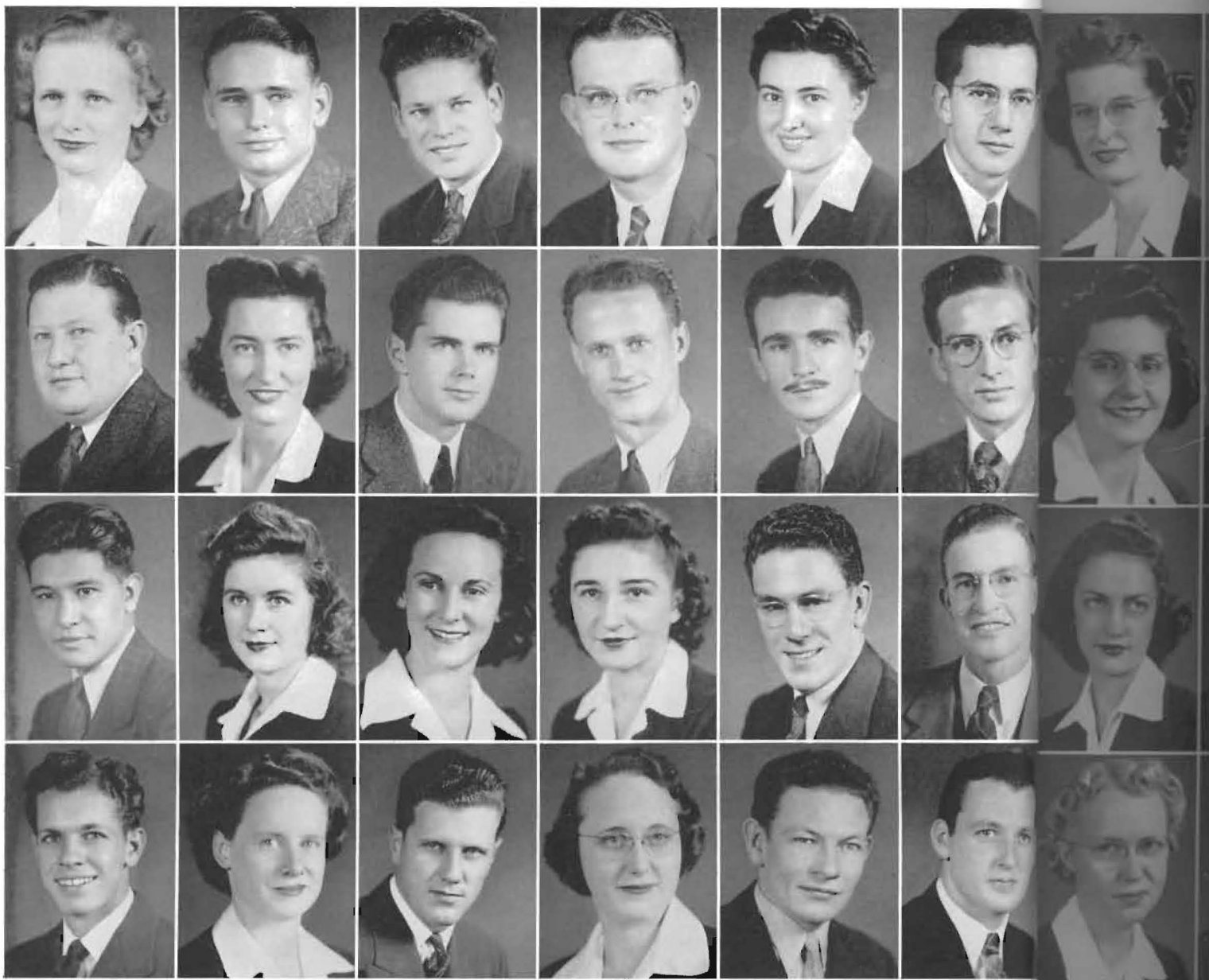
the Dean of Men and the Dean of Women. Early in the year the Council sponsored a picnic in Island Park preceded by a men's stag in Stewart Gym. In January the women held a "Brunch" and in February the men carried out a Father-Son banquet. The year closed with a breakfast in the park and the reception of new members.

## PERSONNEL COUNCIL

# C L A S S E S







ANN  
ANDERSON  
Wellington,  
Kansas

MARION  
ANDERSON  
Potwin,  
Kansas

THOMAS W.  
BACKUS  
Winfield,  
Kansas

RAY  
BAIRD  
Attica,  
Kansas

HELEN  
BARBER  
Scott City,  
Kansas

MARVIN  
BEAN  
Anthony,  
Kansas

EDWARD  
BELT  
Ashland,  
Kansas

CALISTA  
BENDER  
Plains,  
Kansas

DANIEL  
BOLES  
Wilmore,  
Kansas

HAROLD  
BRATCHES  
Winfield,  
Kansas

RONALD  
BROWN  
Pratt,  
Kansas

DICK  
BRUMMETT  
Winfield,  
Kansas

ROBERT  
CHAVEZ  
Lyons,  
Kansas

FRANCES  
COLLINSON  
Winfield,  
Kansas

VIVIAN  
COMPTON  
Denver,  
Colorado

MAXINE  
DIETERICH  
Winfield,  
Kansas

CARLE  
DIX  
Winfield,  
Kansas

BILLY  
DOTSON  
Liberal,  
Kansas

MORRISON  
FOSTER  
Dighton,  
Kansas

GERTRUDE  
FOX  
Cambridge,  
Kansas

KERMIT  
FRANK  
Liberal,  
Kansas

LENORA  
FRY  
Wichita,  
Kansas

DOUGLAS  
HENDERSON  
Los Angeles,  
California

PAUL  
HENDERSON  
Larned,  
Kansas

JOSEPHINE  
HILDYARD

Hutchinson,  
Kansas

MARGARET  
HUMBURG

LaCrosse,  
Kansas

EVA  
JOHNSON  
Herdner,  
Kansas

BETTY  
LEWIS  
Bavaria,  
Kansas

# S E N I O R S



## Personal History

ANDERSON, English; Sigma Pi Phi, Pres.; English Club; Organ Club; Masterbuilder. M. ANDERSON, Instrumental Public School Music; Delphi; Alpha Mu; Band; Orchestra. BACKUS, Physics, Chemistry, Mathematics; Athens, Pres.; Cheerleader; Band; Orchestra; Pi Sigma Phi; Kappa Rho; Science Club; Collegian Business Manager; Who's Who; Student Council; Flying Builders; Intramurals. BAIRD, English; Delphi, Pres.; Senior Class, Vice-Pres.; Sec'y-Treas.; English Club. BARBER, English; English Club; Collegian; S. C. M.; East Hall, Vice-Pres. BEAN, Instrumental Public School Music; Delphi; Alpha Mu, Pres.; Intramurals; Band; Orchestra; Personnel Council; Student Council, Vice-Pres.; Kappa Rho; Trumpet Trio and Quartet; Who's Who. BELT, Journalism; Moundbuilder; Collegian. BENDER, Education; K. K., Vice-Pres.; Belles Lettres; S. C. M.; Cosmo; Student Council; Collegian, Editor; Who's Who. BOLES, Physics, Mathematics; Delphi, Treas.; Leneans, Pres.; Intramurals; Personnel Council; Student Council; Holland Hall, Treas. BRATCHES, Education, Physical Education; Athens; Pi Sigma Phi, Archon; Basketball, Capt.; Football; Intramurals; Student Council; Senior Class, Pres. BROWN, History; Athens; Kappa Rho; Campus Players, Pres.; A Cappella; Band; Orchestra; Trumpet Quartet and Trio; Forensics; Intramurals. BRUMMETT, Instrumental Public School Music; Athens; Pi Sigma Phi; Band; Trumpet Trio and Quartet; Tennis. CHAVEZ, Sociology, Religion; Cosmo; Intramurals; Internat'l Relations. COLLINSON, English; English Club; Gamma Omicron. COMPTON, Home Economics; Sigma Pi Phi; Gamma Omicron; Cosmo, Sec'y.; Internat'l Relations; Flying Builders. DIETERICH, Sociology; Sigma Pi Phi, Pres.; Jinx Janes; Drum Major; Student Council, Sec'y.; Personnel Council; Internat'l Relations, Vice-Pres.; Pi Gamma Mu, Pres.; Gamma Omicron; S. C. M.; A Cappella; Cosmo; Who's Who; May Queen; Masterbuilder. DIX, English; Pi Sigma Phi, Treas.; Student Council; Basketball, Capt.; Personnel Council; Freshman Class, Pres.; Pi Gamma Mu; Intramurals; Moundbuilder; Collegian; Masterbuilder. DOTSON, Physics, Chemistry, Mathematics; Delphi; President Student Body; Science Club; Kappa Rho; Who's Who; Intramurals; Track; Junior Class Pres.; Sophomore Class Vice-Pres.; May Fete Master of Ceremonies; Masterbuilder. FOSTER, Biology, Pre-Medicine; Delphi; Kappa Rho, Pres.; Cheerleader; Pi Sigma Phi; A Cappella; Track; Intramurals. FOX, Home Economics; Kappa Omicron Phi, Pres.; Gamma Omicron. FRANK, Geology; Pi Sigma Phi, Archon; Football; Intramurals. FRY, Home Economics; Sigma Pi Phi; Gamma Omicron, Pres.; Kappa Omicron; Personnel Council. D. HENDERSON, Social Science, Religion; S. C. M.; Forensics; Southwestern Motive editor; Cosmo; Athens; Oxford Fellowship. P. HENDERSON, Instrumental Public School Music; Athens; Alpha Mu; Orchestra; Band; Personnel Council.

HILDYARD, Public School Music; Belles Lettres, Pres.; Orchestra; Band; A Cappella; Moundbuilder, Editor; Alpha Mu. HOLMAN, English; Belles Lettres; Orchestra; English Club, Sec'y.; Cosmo; S. C. M.; Youth Fellowship. HUDSON, Instrumental Public School Music; Delphi; Orchestra; Band; Alpha Mu. HUMBURG, Business Administration; Belles Lettres, Pres.; K. K., Pres.; Senior Class, Vice-Pres.; Internat'l Relations; Personnel Council; Masterbuilder. HUTSELL, Business Administration; Pi Gamma Mu; Cosmo; Sigma Pi Phi; Internat'l Relations. JACOBUS, Public School Music; Sigma Pi Phi, Vice-Pres.; Alpha Mu; A Cappella, Girls' Quartet. JOHNSON, Public School Music; Belles Lettres; Band; Orchestra; A Cappella; Organ Club. KISER, Geology; Athens, Pres.; Science Club; Intramurals; Band; A Cappella. KRAUSE, Social Science, Education; 4-H; Cosmo; Internat'l Relations, Sec'y.; Youth Fellowship. LEWIS, Public School Music; Belles Lettres; A Cappella; Internat'l Relations. MACKAY, Education, Social Science; Pi Sigma Phi; A Cappella; Delphi; Internat'l Relations. MARTIN, Business Administration; Cosmo; Pi Gamma Mu, Vice-Pres.; S. C. M.; Senior Class, Sec'y-Treas.

JOSEPHINE  
HILDYARD

Hutchinson,  
Kansas

MARGARET  
HUMBURG

LaCrosse,  
Kansas

EVA  
JOHNSON

Hardtner,  
Kansas

BETTY  
LEWIS

Bavaria,  
Kansas

DOROTHY  
ALICE  
HOLMAN

Kinsley,  
Kansas

MARGARET  
RUTH  
HUTSELL

Jetmore,  
Kansas

JOE  
KISER

Douglass,  
Kansas

GEORGE  
MACKAY

Haviland,  
Kansas

HOMER  
HUDSON

Grenola,  
Kansas

MARGARET  
JACOBUS

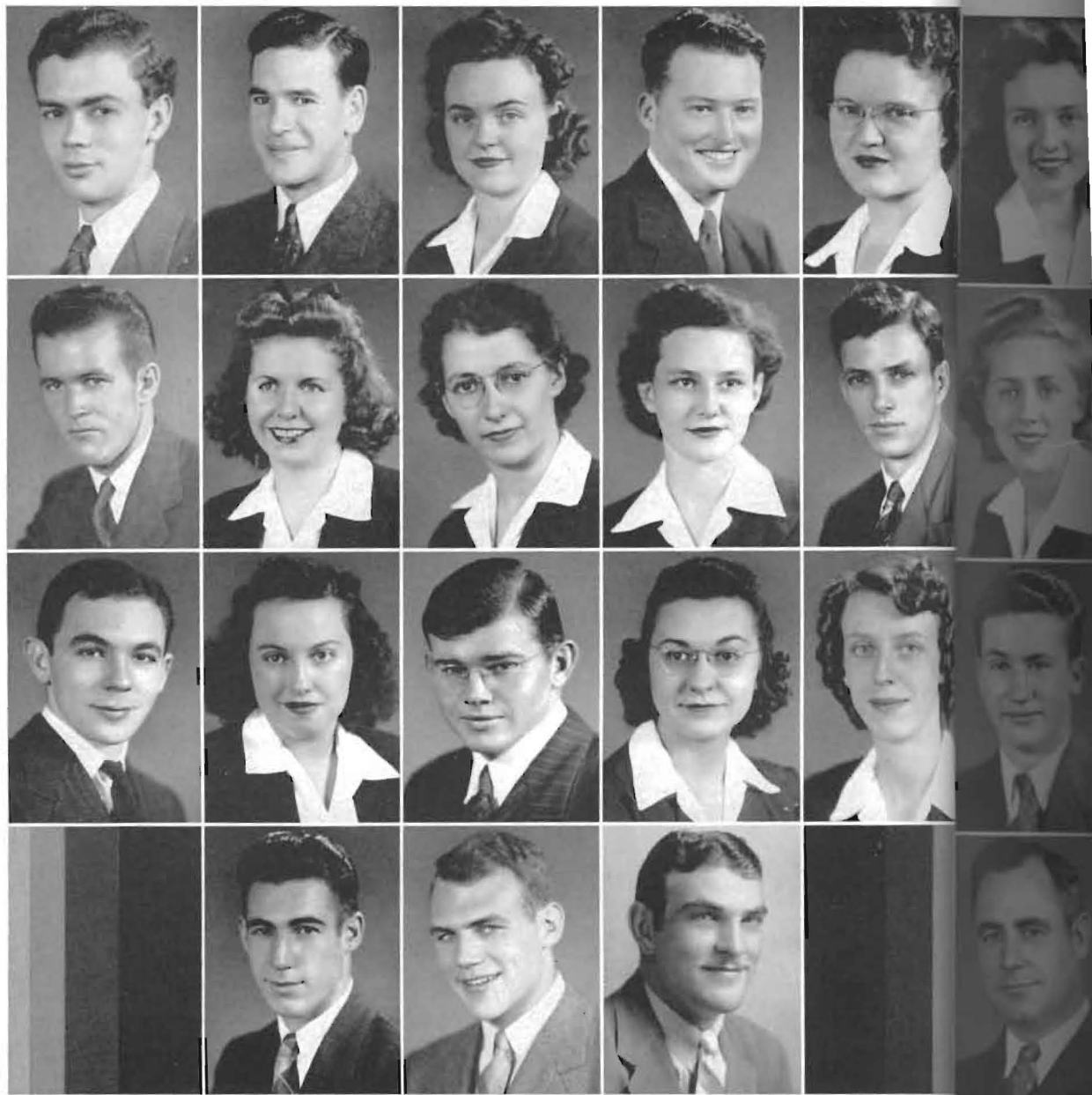
Hutchinson,  
Kansas

NORA  
KRAUSE

Plains,  
Kansas

DELMAR  
MARTIN

Milan,  
Kansas



GLENN  
MATTHEWS

Marion,  
Kansas

DOUGLAS  
MOORE

Anthony,  
Kansas

GEORGE  
REYNOLDS

Dodge City,  
Kansas

EUGENE  
MAXWELL

Rock,  
Kansas

DOROTHY  
NELSON

Winfield,  
Kansas

LORRAINE  
RIGGS

Hillsboro,  
Kansas

EVERETT  
SALSER

Winfield,  
Kansas

MARY  
RUTH  
McNEIL

Winfield,  
Kansas

JANE  
NEWLIN

Lewis,  
Kansas

JACK  
ROSE

Pawnee,  
Oklahoma

GEORGE  
SEIPP

Arkansas City,  
Kansas

HAROLD  
METTLING

Lewis,  
Kansas

MARY  
KATHERINE  
POTTER

Conway Springs,  
Kansas

ANITA  
RYNIKER

Norwich,  
Kansas

TRUELL  
SHAFFER

Arkansas City,  
Kansas

ELMA  
MONROE

Lyons,  
Kansas

ROBERT  
RANDALL

Gueda Springs,  
Kansas

JEANETTE  
RYNIKER

Cheney,  
Kansas

MARJORIE  
SHAFT

Stafford,  
Kansas

WINIFRED  
SMITH

Bentley,  
Kansas

LEONARD  
WARREN

Atica,  
Kansas

WENDELL  
WILLIAMS

Oxford,  
Kansas

# S E N I O R S

## Personal History

MATTHEWS, Instrumental Public School Music; Delphi; Orchestra; Band; Alpha Mu. MAXWELL, Business Administration, Accounting; Athens; Pi Gamma Mu; Intramurals. McNEIL, Sociology; Sigma Pi Phi, Vice-Pres.; Jinx Janes, Pres.; Personnel Council, Pres.; Cosmo, Pres.; Leneans; Who's Who; Student Council; S. C. M. METTLING, Business Administration; Delphi; Intramurals; A Cappella; Flying Builders. MONROE, Home Economics; Gamma Omicron, Pres.; Science Club. MOORE, Biology, Physical Education; Delphi, Vice-Pres.; Pi Epsilon Pi. NELSON, Commerce; Belles Lettres, Sec'y. NEWLIN, Sociology; Belles Lettres; Social Science Club; Internat'l Relations, Pres. POTTER, Home Economics; Belles Lettres, Pres.; Band; Jinx Janes; Kappa Omicron Phi; Gamma Omicron; Personnel Council. RANDALL, Education, Physical Education; Pi Sigma Phi; Track, Capt.; Intramurals. REYNOLDS, Instrumental Public School Music; Kappa Rho, Pres.; Alpha Mu, Sec'y.; Band; Orchestra; Delphi; Intramurals; Student Council; Trumpet Trio and Quartet. RIGGS, English, Public Speaking; English Club; French Club; Sigma; Moundbuilder; Collegian. ROSE, Education; Pi Sigma Phi; Football. A RYNIKER, Public School Music; Sigma Pi Phi; Alpha Mu; A Cappella; Orchestra. J. RYNIKER, Public School Music; Sigma Pi Phi; Alpha Mu; A Cappella. SALSER, History, Education; Delphi; Social Science Club; Internat'l Relations, Treas.; Cosmo Intramurals. SEIPP, Chemistry, Physics; Pi Sigma Phi; Football; Intramurals. SHAFFER, Physical Education, Biology; Pi Sigma Phi; Football, Co-Capt.; Intramurals.

SHAFT, Business Administration; Sigma Pi Phi; K. K., Pres.; Oxford Fellowship; Cosmo; A Cappella; S. C. M.; Youth Fellowship; Cheer Leader; Homecoming Queen. D. SMITH, Home Economics; Belles Lettres, Sec'y.; Cosmo; Gamma Omicron; 4-H, Pres.; Collegian. M. SMITH, English, Music; Sigma Pi Phi, Sec'y.; Jinx Janes, Vice-Pres. and Pres.; S. C. M.; Personnel Council; Who's Who; Youth Fellowship; Alpha Mu; A Cappella, Vice-Pres. W. SMITH, Public School Music; Belles Lettres. TAYLOR, Chemistry, Mathematics; Athens, Vice-Pres.; Science Club, Vice-Pres. VAN LANINGHAM, Sigma Pi Phi; Jinx Janes; Collegian, Editor. L. WARREN, Biology; Delphi; Science Club, Sec'y-Treas.; A Cappella. S. WARREN, Religion; Cosmo; Internat'l Relations; Social Science Club, Treas.; Oxford Fellowship; S. C. M. WHITE, Physics, Mathematics, Chemistry; Delphi, Pres.; Kappa Rho, Pres.; Science Club, Pres.; Pi Kappa Delta; Band; A Cappella; Student Council; Intramurals; Personnel Council; Masterbuilder. WILLIAMS, Social Science. WILSON, Business Administration; Athens, Sec'y.; A Cappella; Intramurals. YERKES, Instrumental Public School Music; Sigma Pi Phi; Jinx Janes, Vice-Pres.; Alpha Mu; A Cappella; Orchestra; Band; Moundbuilder, Class Editor; Student Council; Senior Class, Pres.; String Quartet.

MARJORIE  
SHAFT  
Stafford,  
Kansas

DORIS  
SMITH  
Guyton,  
Oklahoma

MURIEL  
SMITH  
Wakita,  
Oklahoma

WINIFRED  
SMITH  
Bentley,  
Kansas

HAROLD  
TAYLOR  
Winfield,  
Kansas

GERALDINE  
VAN LANINGHAM  
Winfield,  
Kansas

LEONARD  
WARREN  
Attica,  
Kansas

SAMUEL  
WARREN  
Attica,  
Kansas

STEPHEN  
WHITE  
Pretty Prairie,  
Kansas

WENDELL  
WILLIAMS  
Oxford,  
Kansas

CURTIS  
WILSON  
Winfield,  
Kansas

RUTH  
YERKES  
Hutchinson,  
Kansas



VERNON  
AITSON

Mountain View,  
Oklahoma

BETTY  
BIRCHENOUGH

Anthony,  
Kansas

MARVIN  
COOK

Garden City,  
Kansas

JEAN  
DILWORTH

Winfield,  
Kansas

CONROW  
BARHAM

Zinc,  
Arkansas

WANDA  
BROADIE

Winfield,  
Kansas

DWIGHT  
E. COUGH

Haviland,  
Kansas

ORA  
MAE  
DITAMORE

Nash,  
Oklahoma

EDD  
BARHAM

Zinc,  
Arkansas

HELEN  
BROTHERS

Winfield,  
Kansas

NANCY  
JANE  
CURRY

Augusta,  
Kansas

ANN  
DIX

Winfield,  
Kansas

LOYD L.  
BAUGHMAN

Elk Falls,  
Kansas

KENNETH  
BROTHERS

Winfield,  
Kansas

LOU  
DALBOM

Viola,  
Kansas

DALE  
DUNLAP

Rose Hill,  
Kansas

GERALD  
BECK

Tulsa,  
Oklahoma

GROVER  
L. BROWN

Halstead,  
Kansas

HERBERT  
DAVIS

Oxford,  
Kansas

MAURINE  
DUPONT

Pratt,  
Kansas

MARY  
LOU  
BECK

Sterling,  
Kansas

ALBERT  
L. CAYWOOD

Wichita,  
Kansas

KATHARINE  
DAYTON

Haviland,  
Kansas

JAMES  
ROBERT  
EARSOM

Guthrie,  
Oklahoma

DELMAR  
BERRY

Cullison,  
Kansas

WILMA  
JEAN  
CHAPMAN

Ashton,  
Kansas

BETTY  
LOU  
DIETERICH

Florence,  
Kansas

MARGARET  
EBRIGHT

Topeka,  
Kansas

GEORGE  
ECKEL

Leon,  
Kansas

LOUIS  
J. GOSTING

Kildare,  
Oklahoma

LEROY  
HOYT

Atlica,  
Kansas

KATHERINE  
ISELY

Dodge City,  
Kansas

# J U N I O R S



## Personal History

AITSON, Physical Education; Football. C. BARHAM, Physical Education; Football; Pi Sigma Phi. E. BARHAM, Physical Education; Football; Pi Sigma Phi. BAUGHMAN, Physical Education; Delphi. G. BECK, Physics, Chemistry, Mathematics; Delphi, Sec'y.; Personnel Council, Pres.; Pi Epsilon Pi, Vice-Pres.; Forensics; Science Club; Intramurals. M. L. BECK, Home Economics; Sigma Pi Phi; Kappa Omicron Phi, Sec'y.; Gamma Omicron; Personnel Council; Jinx Janes. BERRY, Mathematics, Science; Intramurals. BIRCHENOUGH, Latin, English; Sigma Pi Phi, Sec'y.; English Club, Pres.; Collegian. BROADIE, Sociology; Sigma Pi Phi, Treas.; Collegian; A Cappella; S. C. M. BROTHERS, Home Economics; Gamma Omicron, Treas.; S. C. M.; 4-H; Oxford Fellowship. K. BROTHERS, Business Administration; Athens; Pi Sigma Phi; Track. BROWN, Instrumental Public School Music; Delphi; A Cappella, Pres.; Band; Orchestra; Intramurals; Cosmo; Oxford Fellowship; S. C. M.; Alpha Mu; Pi Epsilon Pi, Vice-Pres. CAYWOOD, Biology; Athens, Pres.; Intramurals. CHAPMAN, Public School Music; Orchestra; A Cappella. COOK, Religion; Delphi; Pi Epsilon Pi; S. C. M.; A Cappella; Intramurals; Youth Fellowship. COUCH, Chemistry, Physics, Mathematics; Science Club, Sec'y-Treas. CURRY, History, Internat'l Relations, Pres.; Forensics; Youth Fellowship; S. C. M. DALBOM, Home Economics; Sigma Pi Phi; Gamma Omicron, Vice-Pres.; Kappa Omicron Phi; Jinx Janes, Sec'y.; Leneans; Student Council; Personnel Council, Sec'y.; S. C. M. DAVIS, Biology; A Cappella. DAYTON, Home Economics; S. C. M.; Cosmo; Sigma Pi Phi; Youth Fellowship; Gamma Omicron, Treas. DIETERICH, Sociology; Sigma Pi Phi, Rush Capt.; Student Council, Sec'y.; Campus Players; Cosmo; A Cappella, Sec'y-Treas.; Personnel Council; Band; Youth Fellowship; S. C. M. DILWORTH, Home Economics; Gamma Omicron, Vice-Pres.; Kappa Omicron Phi; Sigma Pi Phi; Jinx Janes, Rush Capt.; Band; Moundbuilder Photographer. DITAMORE, Public School Music; Belles Lettres; A Cappella. DIX, Dietetics; K. K., Sec'y.; Gamma Omicron; Sigma Pi Phi; W. A. A.; Collegiate 4-H. DUNLAP, Religion; S. C. M.; Athens; Pi Kappa Delta, Pres.; Cosmo, Vice-Pres.; Internat'l Relations; Student Council; Forensics; Collegian; Moundbuilder; Youth Fellowship. DUPONT, Music and Violin; Orchestra. EARSOM, Religion; Oxford Fellowship; Band; Forensics. EBRIGHT, Education; Jinx Janes; Sigma Phi.

ECKEL, Biology; A Cappella; Delphi; Pi Epsilon Pi. GAREY, Business Administration; Delphi; A Cappella; Band; Pi Epsilon Pi; Intramurals. GORSUCH, Business Administration, Chemistry. GOSTING, Chemistry, Physics, Mathematics; Science Club, Vice-Pres. HANKINS, Sociology; Jinx Janes; Cheerleader. HIEBSCH, Social Science; Athens; S. C. M.; Moundbuilder Business Manager; Pi Kappa Delta; Forensics. HOYT, Biology; Oxford Fellowship. HUDSON, Public School Music; Belles Lettres; A Cappella. HULL, Bible; Oxford Fellowship. ISELY, Music; A Cappella; Orchestra; Student Council; S. C. M.; Youth Fellowship. JEFFRIES, Bible, Religion, Forensics; S. C. M. JOHNSON, Pre-Medicine; Kappa Rho; Delphi.

GEORGE  
ECKEL  
Leon,  
Kansas

JOHN  
GAREY  
Stafford,  
Kansas

JACK  
GORSUCH  
Leoti,  
Kansas

LOUIS  
J.  
GOSTING  
Kildare,  
Oklahoma

JOY  
HANKINS  
Everett,  
Massachusetts

KENNETH  
HIEBSCH  
Zenda,  
Kansas

LEROY  
HOYT  
Attica,  
Kansas

EMMA  
JANE  
HUDSON  
Winfield,  
Kansas

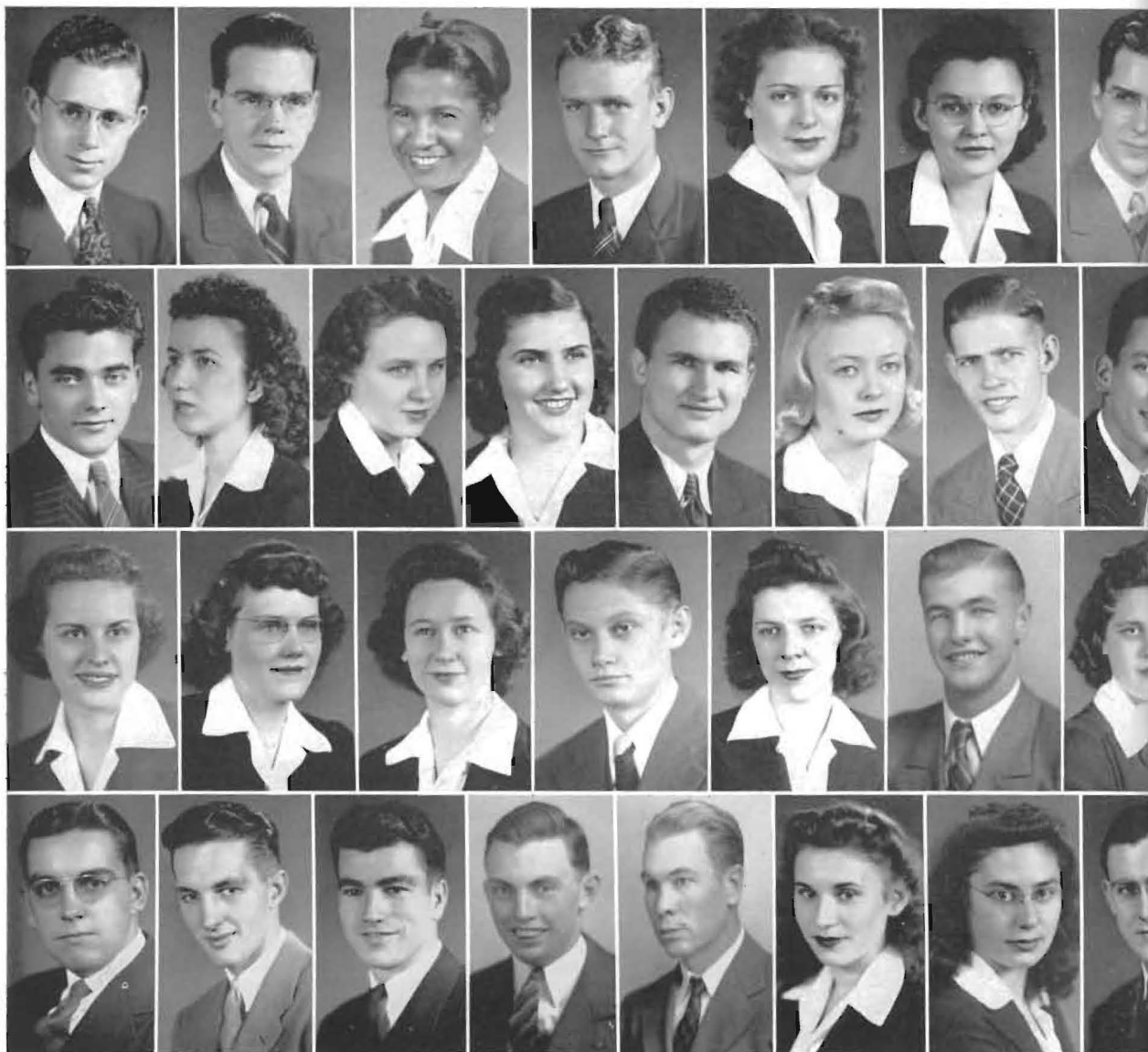
WAYNE  
HULL  
Wichita,  
Kansas

KATHERINE  
ISELY  
Dodge City,  
Kansas

ROBERT  
JEFFRIES  
Rock,  
Kansas

FRANK  
JOHNSON  
Mt. Hope,  
Kansas

1 9 4 3



CLIFFORD  
JONES

Kismet,  
Kansas

ASHER  
KANTZ

Wichita,  
Kansas

ANNETTE  
KENERSON

Mangum,  
Oklahoma

CECIL  
KING

Winfield,  
Kansas

RUTH  
MARILYN  
KISER

Douglass,  
Kansas

NINA  
LAMOREE

Winfield,  
Kansas

WALTER  
LINDBERG

Ogallah,  
Kansas

FRED  
MACDONALD

Hackettstown,  
New Jersey

ELINOR  
McINTOSH

La Harpe,  
Kansas

MARIAN  
McNABB

Winfield,  
Kansas

AZALEA  
MILLER

Woodward,  
Oklahoma

PHIL  
MOORE

Wellington,  
Kansas

EVA  
LOUISE  
MORRIS

Hugoton,  
Kansas

HENRY  
MURRAY

Marion,  
Kansas

HARRY  
PINNEY

Meacham,  
Kansas

MARJORIE  
PLANK

Winfield,  
Kansas

VENETA  
REIMER

Sterling,  
Kansas

ELIZABETH  
JOYCE  
RESLER

Yates Center,  
Kansas

ADRIAN  
RICHARDSON

Murdock,  
Kansas

RUTHE  
ROBBINS

Larned,  
Kansas

BRYCE  
RODERICK

Attica,  
Kansas

MARGIE  
SCHRIVER

Halstead,  
Kansas

MARION  
SEYB  
Pretty Prairie,  
Kansas

DON  
SMITH  
Wichita,  
Kansas

JAMES  
SMITH  
Wichita,  
Kansas

JOYCE  
SOOTER  
Winfield,  
Kansas

IVAN  
SPRINGER  
Lyons,  
Kansas

MARGIE  
STANLEY  
Cunningham,  
Kansas

SHIRLEY  
STANLEY  
Cunningham,  
Kansas

RONA  
STITT  
Dodge City,  
Kansas

# J U N I O R S



## Personal History

JONES, Pre-Medicine; Delphi; Pi Epsilon Pi, Sec'y-Treas.; Intramurals. KANTZ, Physics, Mathematics, Chemistry; Delphi; Science Club; Leneans; Intramurals. KENERSON, Home Economics, Forensics; Cosmo; Gamma Omicron. KING, Chemistry; Delphi; Science Club. KISER, English; English Club; K. K.; Band; Belles Lettres. LAMOREE, Sociology; Cosmo. LINDBERG, History; Internat'l Relations, Vice-Pres.; Athens; Oxford Fellowship, Vice-Pres.; Cosmo; Youth Fellowship. MACDONALD, Business Administration; Delphi; Pi Epsilon Pi. McINTOSH, Piano and Public School Music; A Cappella; Orchestra; Band; Sigma Pi Phi; Alpha Mu, Sec'y.; Youth Fellowship. McNABB, English, Education; Belles Lettres; A Cappella; Organ Club. MILLER, Voice; Band; A Cappella; Jinx Janes; Sigma Pi Phi; Alpha Mu; Orchestra; Student Council. MOORE, Business Administration; Junior Class Pres.; Pi Sigma Phi; Basketball. MORRIS, Music; Sigma Pi Phi; A Cappella; K. K.; Alpha Mu. MURRAY, Bible, Religion, Forensics; Oxford Fellowship, Sec'y-Treas. PINNICK, Chemistry, Physics, Mathematics; Delphi; Pi Epsilon Pi; Intramurals; A Cappella; Science Club. PLANK, Home Economics; Kappa Omicron Phi, Treas.; Gamma Omicron, Sec'y.; K. K., Treas.; A Cappella; Personnel Council. REIMER, Home Economics; Gamma Omicron, Sec'y.; Belles Lettres, Vice-Pres.; Cosmo; Oxford Fellowship; S. C. M. RESLER, Speech; Belles Lettres; S. C. M.; English Club, Vice-Pres.; Youth Fellowship; Forensics. RICHARDSON, History; Student Council; Kappa Rho, Sec'y-Treas.; Delphi, Sec'y; Junior Class, Treas. ROBBINS, Business Administration; Jinx Janes; Sigma Pi Phi; Youth Fellowship, Sec'y-Treas.; A Cappella; S. C. M. RODERICK, Education; Pi Sigma Phi; Delphi; Football; Track; Intramurals. SCHRIVER, Sociology; Sigma Pi Phi, Sec'y.; Pi Kappa Delta, Sec'y.; S. C. M.; Jinx Janes; Forensics; Collegian; Moundbuilder. SEYB, English; Delphi; Kappa Rho, Rush Captain and Vice-Pres.; Leneans; Campus Players; Moundbuilder; Junior Class, Vice-Pres. D. SMITH, Physics, Mathematics; Pi Sigma Phi, Vice-Archon; Basketball. J. SMITH, Mathematics, Speech; Athens; Basketball. SOOTER, Education. SPRINGER, Biology; Delphi. M. STANLEY, Pre-Nursing; Sigma Pi Phi; Science Club; Gamma Omicron. S. STANLEY, English; Belles Lettres; English Club; Youth Fellowship. STITT, Pre-Medicine; Athens.

STOOPS, Bible, Religion, Forensics; S. C. M.; Oxford Fellowship, Pres.; Cosmo; Intramurals. THORNE, Business Administration; Delphi, Rush Capt.; Intramurals; Band; Kappa Rho; Student Council. TUCKER, Physical Education; Basketball; Pi Sigma Phi. TUTTLE, English; K. K.; Belles Lettres. WALLACE, English; Delphi; S. C. M.; 4-H. WANDMACHER, Public School Music; Delphi; Alpha Mu; Campus Players; A Cappella; Orchestra. WINTERS, Physical Education and Education; Pi Sigma Phi; Collegian. WHITE, Public School Music; Kappa Rho; Delphi; Alpha Mu, Pres.; A Cappella, Student Director; Band; Orchestra. C. YOUNG, History; Jinx Janes; Sigma Pi Phi; W. A. A. M. YOUNG, Commerce; Jinx Janes; Orchestra; Organ Club. ZIMMERMAN, Commerce; Belles Lettres, Treas.; Jinx Janes. ZAHN, Business Administration; Pi Sigma Phi; Basketball; Delphi.

WAYNE  
STOOPS  
Yale,  
Oklahoma

RALPH  
THORNE  
Kansas City,  
Missouri

OLIN  
TUCKER  
Winfield,  
Kansas

GERRIE  
TUTTLE  
Winfield,  
Kansas

NOEL  
WALLACE  
Towanda,  
Kansas

HERMAN  
H.  
WANDMACHER  
Merrick,  
New York

CLIFFORD  
WINTERS, JR.  
Winfield,  
Kansas

BYRON  
F. WHITE  
Pretty Prairie,  
Kansas

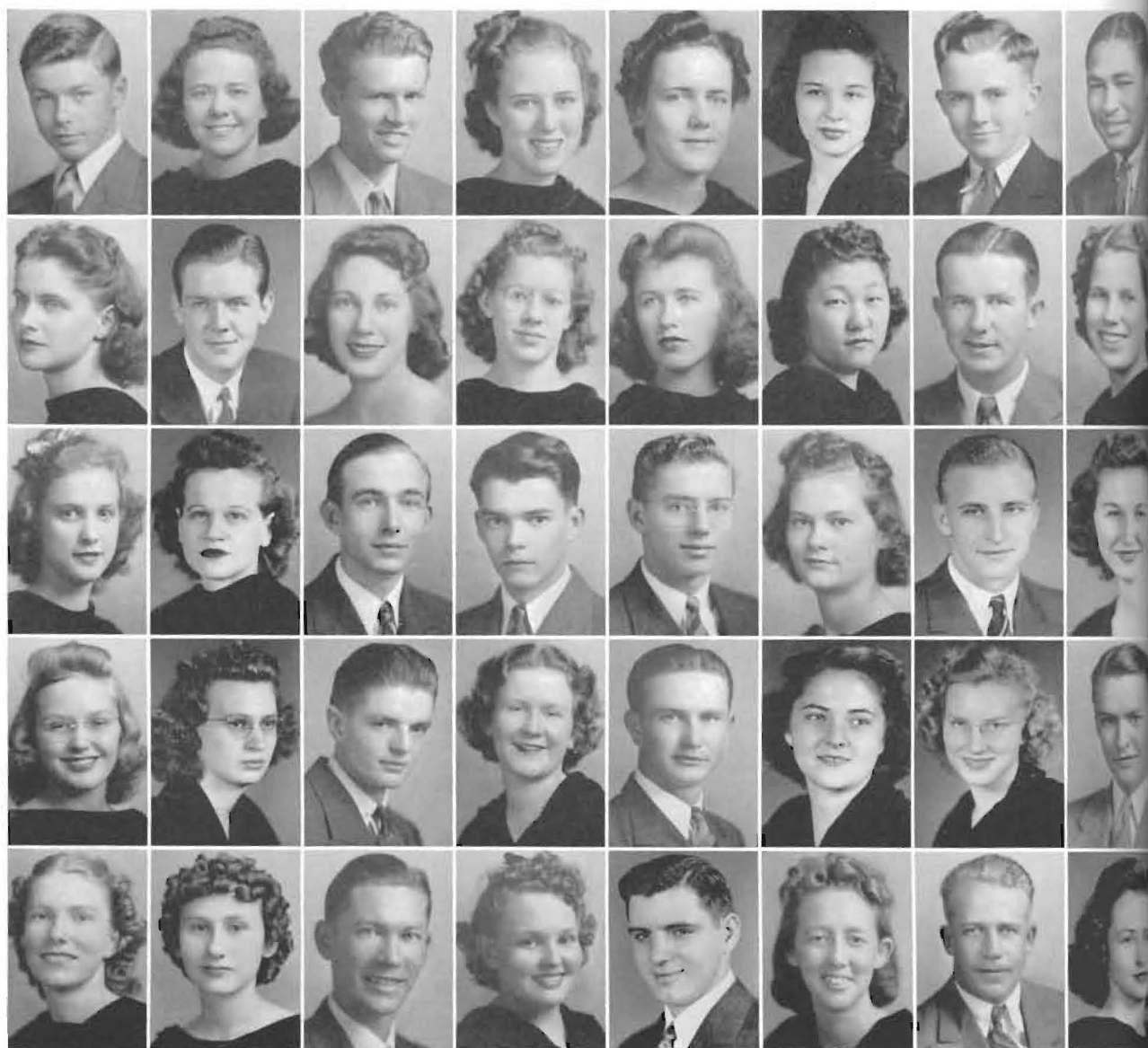
CATHRYN  
YOUNG  
Protection,  
Kansas

MARJORIE  
YOUNG  
Hardtner,  
Kansas

IDA  
BELLE  
ZIMMERMAN  
Kiowa,  
Kansas

LEROY  
ZAHN  
Jetmore,  
Kansas

1 9 4 3



BILL  
ARCHER  
Winfield,  
Kansas

JUNE  
BOLES  
Wilmore,  
Kansas

LOUISE  
COUCHMAN  
Wichita,  
Kansas

NORMA  
ECKERT

Wellington,  
Kansas

MILDRED  
GROVES

Medicine Lodge,  
Kansas

DOROTHY  
ARNETTE  
Winfield,  
Kansas

HENRY  
BROWN  
Haviland,  
Kansas

MARIAN  
COYLE  
Winfield,  
Kansas

KATHLEEN  
FRANKS

Winfield,  
Kansas

MARGERY  
HAGUE

Leonard,  
Kansas

WINSTON  
BALKE  
Nevada,  
Missouri

MARJORIE  
BROWN  
Winfield,  
Kansas

FRANK  
CRAIG  
Udall,  
Kansas

STEVE  
FRAZIER

Anthony,  
Kansas

CHURCHILL  
HARLAN

Winfield,  
Kansas

ELLENOR  
BENDER  
Burns,  
Kansas

HELEN  
BUSH  
Winfield,  
Kansas

WILLIAM  
DE LAUGHDER  
Winfield,  
Kansas

JEANNE  
FUHRER  
RIED

Wichita,  
Kansas

VALO  
HARSHBERGER

Minneola,  
Kansas

RUTH  
BERGDALL  
Meno,  
Oklahoma

LOUISE  
CALLISON  
Winfield,  
Kansas

GORDON  
DIETERICH  
Walton,  
Kansas

WESLEY  
GARTON

Syracuse,  
Kansas

LEE  
HENDRICKS

Beaver,  
Oklahoma,

HELEN  
BERMOND  
Winfield,  
Kansas

DAHLIA  
CHA  
Honolulu,  
Hawaii

VERA  
DOWLER  
Winfield,  
Kansas

RUTH  
GREEN

Bartlesville,  
Oklahoma

WANDA  
LEE  
HERSCHBERGER  
Anthony,  
Kansas

ETCYL  
BLAIR  
Winfield,  
Kansas

BILL  
CLOUD  
Wilmot,  
Kansas

ROBERT  
DUNCAN  
Hunter,  
Oklahoma

EILEEN  
GROSDIDIER

Attica,  
Kansas

WILLIAM  
HETZER

Deerfield,  
Kansas

VICTOR  
BLAND  
Sterling,  
Kansas

VENA  
CONDIT  
Liberal,  
Kansas

ROSALE  
EASTMAN  
Wilmot,  
Kansas

JAMES  
GROVES

St. John,  
Kansas

MARVINE  
HIEBSCH

Zenda,  
Kansas

# S O P H O M O R E S



VICTOR  
BLAND  
Sterling,  
Kansas

VENA  
CONDIT  
Liberal,  
Kansas

ROSALIE  
EASTMAN  
Wilmot,  
Kansas

JAMES  
GROVES

St. John,  
Kansas

MARVINE  
HIEBSCH

Zenda,  
Kansas

WENDELL  
HODGES  
Greensburg,  
Kansas

ELDA  
KELMAN  
Pretty Prairie,  
Kansas

CHARLES  
KOPKE  
Coldwater,  
Kansas

ILO  
MARTIN  
Milan,  
Kansas

KENNETH  
McCORMACK  
Winfield,  
Kansas

LOIS  
HULL  
Kingman,  
Kansas

GLENNYS  
KIRKHUFF  
Turon,  
Kansas

BILL  
LANDRETH  
Baxter Springs,  
Kansas

PATSY  
MARTIN  
WHEELER  
Wichita,  
Kansas

DAVID  
McGUIRE  
Keats,  
Kansas

EVANGELINE  
JACKSON  
Winfield,  
Kansas

MAXINE  
KIRKHUFF  
Turon,  
Kansas

FRED  
LAWRENCE  
Winfield,  
Kansas

BETTY  
JEAN  
MATTHEWS  
Winfield,  
Kansas

PHYLLIS  
MILLER  
Guymon,  
Oklahoma

JOYCE  
JOHNSON  
Topeka,  
Kansas

DONABEL  
KNOWLTON  
Oxford,  
Kansas

ALBERT  
LITTLE  
Richfield,  
Kansas

ROBERT  
McCALL  
Canton,  
Kansas

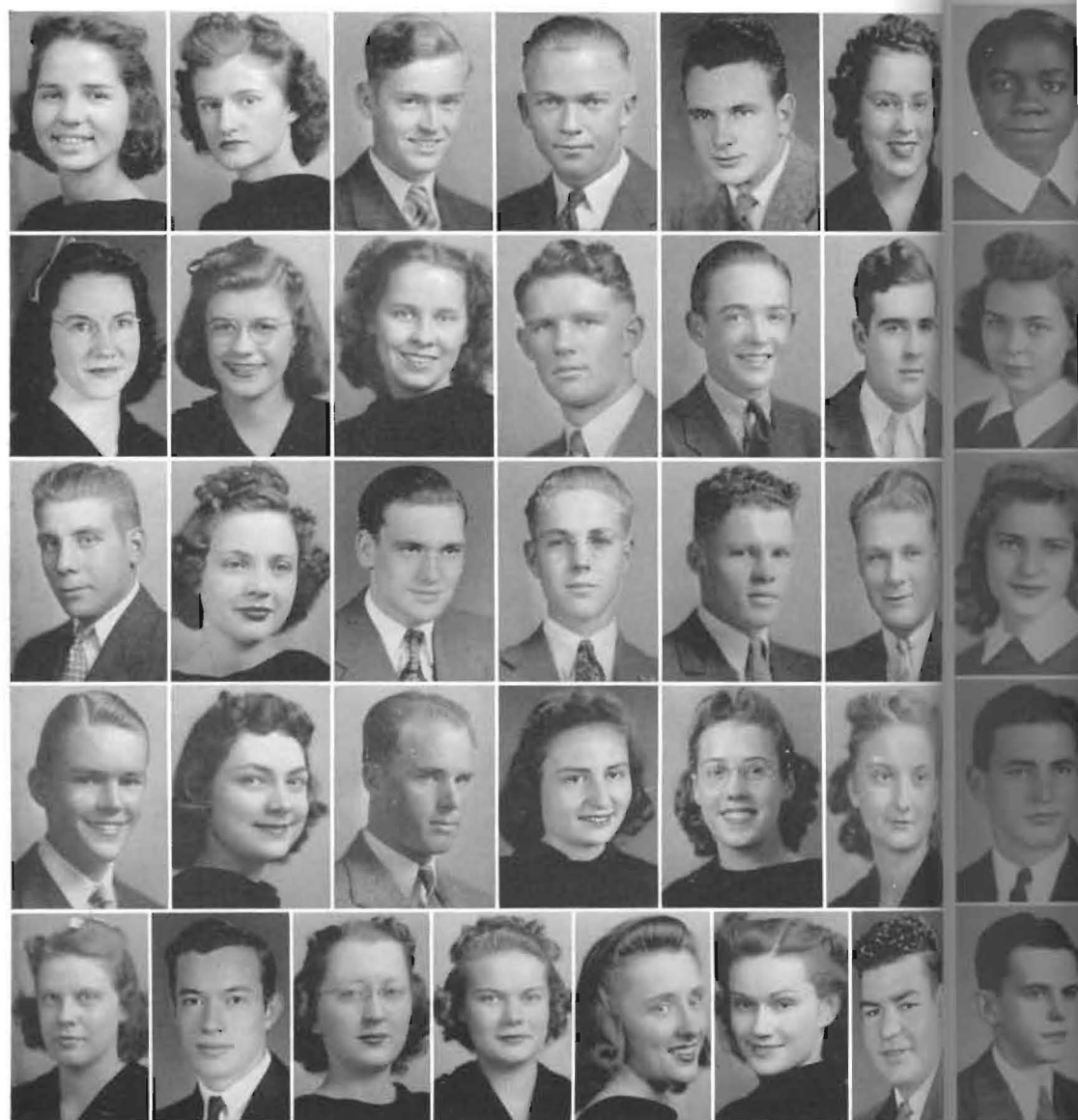
GERALD  
MORRILL  
Winfield,  
Kansas

1

9

4

4



MARY  
IRENE  
MYERS  
Lost Springs,  
Kansas

JANICE  
OVERMILLER  
Larned,  
Kansas

BOB  
OWEN  
Wellington,  
Kansas

GLENN  
PATTON  
Sublette,  
Kansas

GLENN  
PEDEN  
Moline,  
Kansas

RUTH  
RESCHKE  
St. John,  
Kansas

ELINOR  
RESLER  
Yates Center,  
Kansas

PEG  
RIEDERER  
Belpre,  
Kansas

BILLIE  
ROBBINS  
Larned,  
Kansas

ALVIN  
ROBINSON  
Newton,  
Kansas

FORREST  
ROBINSON  
Winfield,  
Kansas

ROBERT  
ROBINSON  
Beaver,  
Pennsylvania

FRANNY  
RUEFLE  
Pittsburgh,  
Pennsylvania

IO  
SCHLENZ  
Preston,  
Kansas

JOE  
SHAW  
Winfield,  
Kansas

JOE  
SIMS  
Minneola,  
Kansas

GENE  
SLOAN  
Winfield,  
Kansas

JACK  
SMITH  
Kinsley,  
Kansas

LEONARD  
SMITH  
Larned,  
Kansas

ELIZABETH  
STATELER  
Braman,  
Oklahoma

JOHNNY  
SWAFFORD  
Anthony,  
Kansas

FAITH  
TUTTLE  
Winfield,  
Kansas

DOROTHY  
VARENHORST  
Conway Springs,  
Kansas

BONNIE  
LEE  
VOLKLAND  
Bushton,  
Kansas

NADINE  
WAGNER  
Winfield,  
Kansas

FRANK  
WHITE  
Oxford,  
Kansas

MARTHA  
JANE  
WHITE  
Wellington,  
Kansas

JESSIE  
WILVERS  
Winfield,  
Kansas

EDITH  
WINTERS  
Winfield,  
Kansas

WINONA  
WORTMAN  
BLOSS  
Colorado  
Springs,  
Colorado

ORVILLE  
WRAY  
Yukon,  
Oklahoma

MINETTE  
ADAMS  
Winfield,  
Kansas

MARGUERITE  
BEEMAN  
Winfield,  
Kansas

RACHEL  
BOLAY  
Wellington,  
Kansas

LYNN  
BROWNLEE  
Pretty Prairie,  
Kansas

KEITH  
CONGDON  
Winfield,  
Kansas





JUTH  
ESCHKE

John,  
Kansas

ROBERT  
OBINSON

Thayer,  
Pennsylvania

ACK  
MITH

nsley,  
Kansas

ONNIE  
OLKLAND

shnton,  
Kansas

ORVILLE  
FRAY

ukon,  
Oklahoma

MINETTE  
ADAMS  
Winfield,  
Kansas

MARGUERITE  
BEEMAN  
Winfield,  
Kansas

RACHEL  
BOLAY  
Wellington,  
Kansas

LYNN  
BROWNLEE  
Pretty Prairie,  
Kansas

KEITH  
CONGDON  
Winfield,  
Kansas

ROBERT  
BALL  
Conway Springs,  
Kansas

JOY  
BENDER  
Burns,  
Kansas

BARBARA  
BRISCOE  
Cambridge,  
Kansas

JANE  
BUCKLES  
Thayer,  
Kansas

JAMES  
CONROD  
Winfield,  
Kansas

ROSS  
BARNES  
Lewis,  
Kansas

HIAWATHA  
BLAND  
Sterling,  
Kansas

BILL  
BROWN  
Plains,  
Kansas

GENEVIEVE  
BURT  
Winfield,  
Kansas

BARBARA LE  
CRICK  
Britton,  
Oklahoma

BETTY VIONA  
BARTLE  
St. John,  
Kansas

ALICE MAE  
BLOOD  
Winfield,  
Kansas

S. DE VERE  
BROWN  
Leon,  
Kansas

LEON  
CLOSE  
Kingsdown,  
Kansas

THELMA  
CROW  
Hazelton,  
Kansas

# F R E S H M E N



MARGARET  
DAUGHERTY  
Winfield,  
Kansas

GENEVIEVE  
DAVES  
Winfield,  
Kansas

ROBERTA  
DICKINSON  
Winfield,  
Kansas

JEANETTE  
DOUGHTY  
Leon,  
Kansas

BETTY JO  
DUNLAP  
Winfield,  
Kansas

ELBERT W.  
ECKEL  
Leon,  
Kansas

HAROLD  
ESSEX  
Douglass,  
Kansas

LOIS  
EWING  
Conway Sp.,  
Kansas

CHARLENE  
McQUEENE  
Trowdale,  
Kansas

JOHN  
FARAGHER  
Milwaukee,  
Wisconsin

RUTH  
FRANKLIN  
Liberal,  
Kansas

KENNETH  
FROMAN  
Winfield,  
Kansas

DOUGLAS K.  
FULTON  
Coats,  
Kansas

FORREST  
FURUHASHI  
Honolulu,  
Hawaii

BILL  
HAMM  
Winfield,  
Kansas

HELEN  
HANDLEY  
Cullison,  
Kansas

BILL  
HARPER  
Coats,  
Kansas

PAUL  
PHILLIPS  
Friedrichsburg  
Texas

KATHLEEN  
HAZEN  
Thayer,  
Kansas

RUBY  
HENSLEY  
Elkhart,  
Kansas

CARSON  
HOWARD  
Douglass,  
Kansas

MARGUERITE  
JENIKE  
Wichita,  
Kansas

HELEN  
JENNINGS  
Altamont,  
Kansas

FLORA  
JONES  
Ulysses,  
Kansas

VADA RUTH  
KING  
Winfield,  
Kansas

DORA  
LAWRENCE  
Winfield,  
Kansas

JOSEPHINE  
SCOTT  
Blanco,  
Kansas

FRANCES  
ANNE  
LAWRENCE  
Winfield,  
Kansas

CHARLOTTE  
VIRGINIA  
LEGG  
Elkhart,  
Kansas

DONLOE  
BOCOOK  
LEWIS  
Winfield,  
Kansas

BRADLEY  
LIGHT  
Winfield,  
Kansas

VIOLET  
MARKWELL  
Long Island,  
Kansas

JANE LEE  
MARSH  
Winfield,  
Kansas

LAURENE  
MATTHEWS  
Marion,  
Kansas

MARGARET  
MAURER  
Winfield,  
Kansas

JOE  
YANN  
Commerce,  
Oklahoma

LOIS  
MAYALL  
Valley Center,  
Kansas

BETTY  
McALLISTER  
Winfield,  
Kansas

DOROTHY  
McCONNELL  
Winfield,  
Kansas

VIRGINIA LEE  
McCOOL  
Winfield,  
Kansas

CHARLES  
McDERMOTT  
Winfield,  
Kansas

EVA MAE  
McGREGOR  
Moline,  
Kansas

JAMES  
McMAHON  
Kansas City,  
Kansas

JIM  
McNEIL  
Winfield,  
Kansas

BETTY  
WEEKS  
Linn,  
Kansas



LOIS  
EWING  
Conway Springs,  
Kansas

HILL  
HARPER  
Coats,  
Kansas

MORA  
LAWRENCE  
Winfield,  
Kansas

MARGARET  
MAURER  
Winfield,  
Kansas

M  
McNEIL  
Winfield,  
Kansas

CHARLENE  
McQUEENE  
Troydale,  
Kansas

PAUL  
PHILLIPS  
Fredericksburg,  
Texas

JOSEPHINE  
SCOTT  
Bloom,  
Kansas

JOE  
VANN  
Commerce,  
Oklahoma

BETTY  
WEEKS  
Udall,  
Kansas

KEITH  
MOORE  
Wellington,  
Kansas

DOROTHY  
PINKS  
Winfield,  
Kansas

DOROTHY  
SEIFERT  
Anthony,  
Kansas

JOAN  
VAUGHN  
Winfield,  
Kansas

DELBERT  
WENIGER  
Cleveland,  
Kansas

BOB  
MILES  
Winfield,  
Kansas

WILMA  
PRIDDY  
Cullison,  
Kansas

JUNE  
SMITH  
Wichita,  
Kansas

GEORGENE  
WAITE  
Winfield,  
Kansas

NANCY  
WHITE  
Pretty Prairie,  
Kansas

JACK  
MORRIS  
Kansas City,  
Missouri

RALPH  
PRUITT  
Bernard,  
Kansas

VIRGINIA LOU  
SNYDER  
Cullison,  
Kansas

ELSIE  
WALL  
Guymon,  
Oklahoma

LEILA  
MAY  
WILLIAMS  
Oxford,  
Kansas

GILMER  
NELLIS  
Winfield,  
Kansas

JAMES  
REINBOLT  
Neodesha,  
Kansas

MARVIN  
SOMERS  
Conway Springs,  
Kansas

CHARLES  
WARD  
Kansas City,  
Missouri

PHYLLIS  
WRIGHT  
BLACK  
Winfield,  
Kansas

BOB  
NELSON  
Winfield,  
Kansas

NORMA  
RICHARDS  
Norwich,  
Kansas

BILL  
STANLEY  
Cunningham,  
Kansas

MARGARET  
WARD  
Long Island,  
Kansas

PAUL  
WYCOFF  
Winfield,  
Kansas

JANE  
OSTERHOUT  
Winfield,  
Kansas

DONALD  
SALSER  
Winfield,  
Kansas

FREDIA  
STINER  
Winfield,  
Kansas

VERA  
WARREN  
Attica,  
Kansas

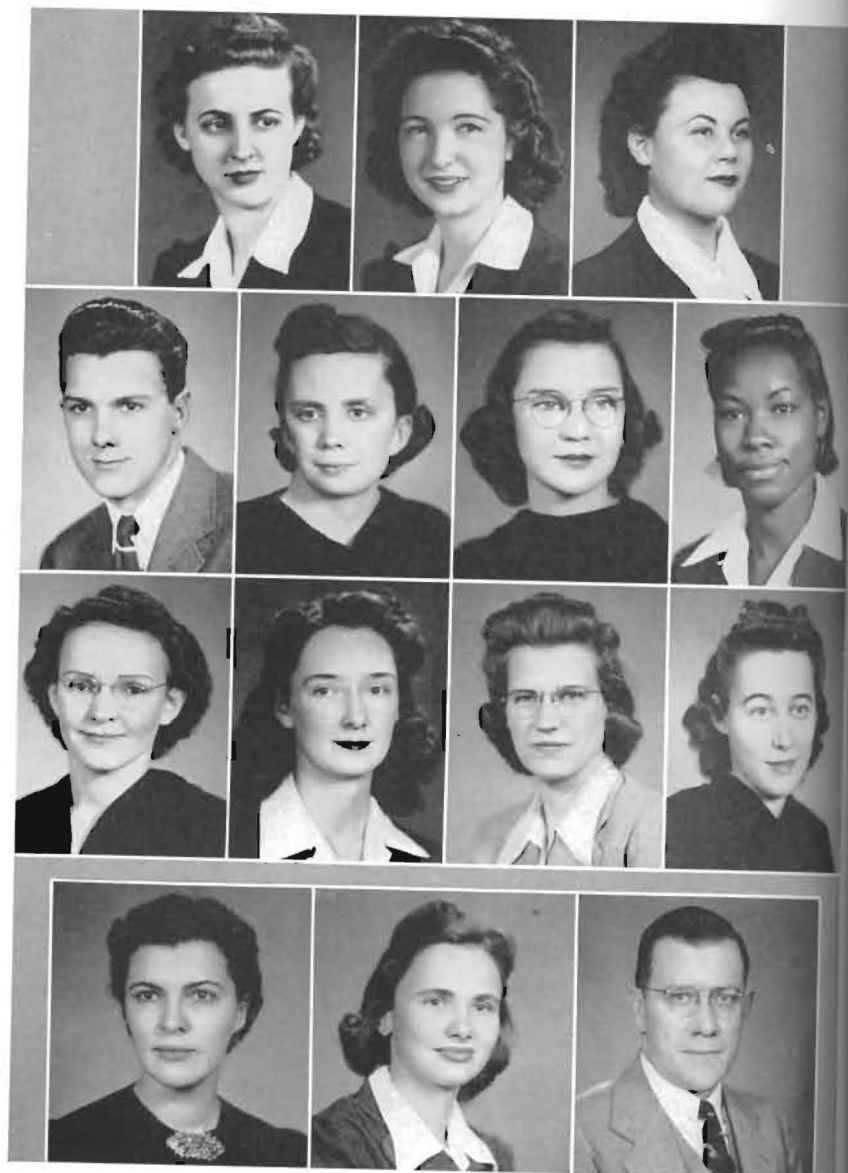
MARTHA  
YOULE  
Winfield,  
Kansas

HAZEL  
OVERMILLER  
Larned,  
Kansas

JOHN  
SANCHEZ  
Peabody,  
Kansas

WAYNE  
THORNE  
Kansas City,  
Missouri

BILL  
WATKINS  
Manchester,  
Oklahoma



## SPECIAL AND SECOND SEMESTER STUDENTS

CLARA  
BATY

Plains,  
Kansas

MARY E.  
MEADOR  
DEETS

Winfield,  
Kansas

MARIE  
GETTYS

Lamont,  
Oklahoma

AUSTIN  
HELM  
McLeansboro,  
Illinois

GERALDINE  
HULL  
Eldorado,  
Kansas

MARJORIE  
McKINNEY  
Winfield,  
Kansas

FRANCYS  
NUTTER  
Muskogee,  
Oklahoma

MRS.  
ELLEN  
PARSONS  
Winfield,  
Kansas

DORIS  
HIGHFILL  
PEDEN  
Winfield,  
Kansas

ELIZABETH  
YERKES  
RESLER  
Hutchinson,  
Kansas

MARY  
FRANCES  
SAYE  
Udall,  
Kansas

## FACULTY

MISS  
HELEN  
DOOLEY

MRS.  
LENORE  
JENSEN

C. H.  
LONG



♫ BUILDER  
*Musicana*



All  
denomin  
been the  
book rev  
piano re

Ann  
stag and  
club gav  
held at

The  
man girl  
were hel

Del  
Calista  
Movem

STU

All students in Southwestern are members of the Student Christian Movement, a non-denominational religious organization. Friendship, youth recreation and reconstruction have been the subjects of this year's programs. The club heard a variety of programs including book reviews and travel logs presented by visiting speakers, panel discussions and movies, and a piano recital.

Annual first week events sponsored by S. C. M. are the sing at the top of the "77," the boys' stag and girls' hike ending in a watermelon feed and the snake dance. At Easter time the club gave a party for Negro children. The highlight of the year was the regional conference held at Southwestern the last week in April.

The most all-school project the club sponsors is the "Big and Little Sister." Every freshman girl acquires a Big Sister who helps her get adjusted to her new surroundings. "Fun Fests" were held Saturday nights with folk dancing, sings and games the center of interest.

Delegates go every summer to the conferences at Estes Park. Ruth Franklin, Dale Dunlap, Calista Bender, Douglas Henderson and Miss Chalcea White attended the Methodist Student Movement conference at the University of Illinois in January.

## STUDENT CHRISTIAN MOVEMENT



*First row:* Dunlap, Broadie, Franklin, McNeil

*Second row:* J. Resler, Cook, Condit, Snyder, Handley, K. Hiebsch, M. Hiebsch

*Third row:* Blood, G. Dieterich, Miss White, G. Brown, M. Dieterich, Jackson, Holman





*First row:* Hull, McGregor, V. Warren, Brothers  
*Second row:* Martin, Grosdidier, Green, Dayton, Lindberg, Reimer, Stoops, S. Warren  
*Third row:* DeLaughder, Hull, Weniger, Earsom, Murray, D. Henderson, Hoyt

## OXFORD FELLOWSHIP

High standards and the promotion of religious ideals on the Southwestern campus characterize the members of Oxford Fellowship. The organization is made up of a group of young men and women looking forward to future life work as ministers, missionaries or workers in other religious fields. The year's program includes gospel team trips, several parties, and the regular Monday night meetings each week.

## COSMOPOLITAN CLUB

Carrying on in wartime as in peacetime in the belief that "Above all nations is humanity," Cosmopolitan Club initiated twenty-one pledges following the warm introduction of a chili supper complete with Mexican atmosphere.

New faculty sponsors are Dr. and Mrs. Willis B. Caton, whose gracious friendliness soon proved their Cosmopolitan spirit.

*First row:* Reimer, Martin, Jackson, Dr. Caton, McNeil, Dieterich, B. Robbins, Franks, Stoops  
*Second row:* Anderson, Dayton, Lindberg, Krause, Myers, Martin, Dunlap, Hiebsch, Weeks, Jennings, Hutsell  
*Third row:* V. Bland, B. Matthews, D. Smith, Varenhorst, B. Dieterich, Shaft, M. Dieterich, J. Smith, G. Brown



# F O R E N S I C S

It's "keep 'em flying" says the U. S. Army and it's "keep 'em speaking" says old S. C. Under the command of the Commander-in-Chief, Dr. LeRoy Allen, this forensic force of twenty-four members did "keep 'em speaking" from September till April when they called a halt to restrengthen their forces before next fall.

The force held exhibitions every Wednesday and Friday. These included everything from Resolved: "That the Democracies should form a federation to establish and maintain the Atlantic Charter," to Love, Courtship and Marriage. In the various contests for marksmanship eight teams went 'over the top' and made the debate squad(ron) advancing from S. C. to camps at Ada, Oklahoma; Oklahoma University at Norman, and the State League at Wichita where the girls battled to a tie for first place. In the interforensic contests, first place honors in

extemporaneous speaking went to Lou Snyder, second to William DeLaughder, and third to Wayne Stoops. In oratory, Dale Dunlap won first and Marvine Hiebsch second. Marvine took her oration to the state contest at Lawrence, Kansas, and Dale took his to the National Tournament at Minneapolis, Minnesota.

The year proved very successful, for the majority joined the ranks as privates and finished as corporals, sergeants or second lieutenants with Dale Dunlap, Kenneth Hiebsch, and Marguerite Schriver being the highest in rank as major-generals.

To gain further training, Dr. Allen and Dale spent a week in camp at the National Pi Kappa Delta tournament at Minneapolis, Minnesota, and came back fired with enthusiasm for the S. C. forensic forces of the future.

*First row:* Handley, Stoops, Curry, Dr. Allen, Snyder, Earsom, Knowlton  
*Second row:* Schriver, Jeffries, Osterhout, J. Resler, Weeks, Myers, Franklin, Kennerson, DeLaughder, Watkins  
*Third row:* Dunlap, D. Henderson, McNeil, Hiebsch, Murray, Beck, Harper





*Top left:* E. Bender, C. Young, Hensley, Weeks, Schriver

*Top right:* Birchenough, Seyb, H. Brown, Jackson, Dunlap, L. Hull, J. Smith

*Insert:* Hiebsch, Dilworth, Hildyard

Remember the night you went to the Sigma-Delphi play and those numerous concerts you attended and how it sounded as though the rafters of Richardson Hall were coming down on top of you? Well, it really wasn't the vibrations of the performance you were hearing. Rather, it was "ye old MOUNDBUILDER Staff" killing two birds with one stone—trying to keep an eye on the stage through the skylight and at the same time piecing together the Story of the Year.

And many the weird sound that you heard echoing through the halls came from Jo and her "man-Friday," Kenny, battling with figures and copy. Maybe you think it didn't take some figuring to put out this 1942 MOUNDBUILDER, and to reduce the littered editor's desk to the orderly table it is today.

While Kenny and Jo were having their ups and downs, the daring Jean and her camera were dashing hither and yon from dressing rooms to Smith Hall fire escapes. With the able leadership of these three and the cooperative staff the last sheet came off the press.

M O U N D B U I L D E R



*Top: First row:* Birchenough, D. Smith,  
Broadie, J. Zimmerman, Barber

*Second row:* E. Bender, MacKay, C. Young,  
Dunlap

*Insert:* Blair, L. Hull, Backus



Hustle! Hustle! . . . was Editor Bender's slogan on Monday morning for the first eighteen weeks. "This copy has to be at the printers by 8 o'clock," and that last minute suspense while Eddie wrote up the final score which would appear in the paper the next morning. Of course there were the moments of apologies when an article had to be left out because Backus really applied that high pressure sales talk and the paper was just one ad column after another!!! Well, anyway *one* column of advertisements.

A change in the personnel during the year didn't daunt the spirit of the Collegian. Lois Hull took a firm grip on the baton during the last semester and to the melodious (monotonous) tune of the Underwood led the Collegian staff on to a victorious finish. Etcyl Blair filled in for Backus and kept the businessmen on their toes to keep up with his steady chatter.

So the last key was struck, the last printer's song sung, and the echo of praise still ringing as the editors rolled down their sleeves and went back to normalcy again!

C O L L E G I A N



# LENEANS



*First row:* Dalbom, J. Smith, Knowlton  
*Second row:* Kantz, McNeil, D. Boles, Seyb, Condit, Cloud

"Up every Sunday at break of day" could be a slogan for a member of Leneans, Southwestern's organization of religious drama. On Sundays of the spring semester this group presents its current production to churches of neighboring towns.

This year the Leneans had a busy season of nearly thirty appearances under the direction of Miss Edith Dielmann, who organized the first Lenean group fifteen years ago. "Pontius Pilate" by Elliot Field was the season's production.

The work of these actor members includes besides acting, loading and unloading a bus and building and tearing down a stage for each performance. Reward is in the knowledge of the work they are doing and in the consumption of large quantities of food at various and sundry church dinners.

Dan Boles was president for the season and Jack Smith was business manager.

"Deny thy Jesus"



Brown, Seyb, B. Dieterich,  
Wandmacher, Miss Graham



## CAMPUS PLAYERS

Campus Players might be characterized by the teas they hold for the purpose of discussing the next play to be given. In the psychological melodrama "Night Must Fall," Miss Helen Graham played the dual role of actress and director from a wheel chair. A Russian one-act farce, "The Boor," provided a mid-winter workout for members. Following the May Fete, the spring production was presented.

All members are proud possessors of the mask and dagger pin. At Homecoming former members were entertained at a dinner. Rod Brown was president, and Speed Seyb, business manager.

"Tell them in the stable that Toby is *not* to have any more oats today"





Loading up  
Freshmen duties

Fred Waring.<sup>3</sup> Well, maybe not, but—

Three times a week in the late afternoon you will find those sixty warblers, better known as the A Cappella Choir, busy practicing with such diligence and regularity as is found in few other organizations. "Though this be madness, yet there is

*First row:* J. Ryniker, Hudson, Jacobus, Priddy, M. White, McNabb, Isely, Mayall, Williams, Buckles, McIntosh, B. Dieterich, M. Dieterich, Broadie, N. White, A. Miller

*Second row:* Shaft, B. Matthews, P. Miller, M. Smith, Hildyard, Ditamore, H. Overmiller, E. Morris, Cha, Prof. Dees, Stateler, Crow, F. Lawrence, A. Ryniker, Grosdidier, Green, Plank

*Third row:* G. Dieterich, Pinnick, Pruitt, Garton, K. Moore, H. Brown, Mettling, Wilson, G. Brown, Sims, Kiser

*Fourth row:* Hodges, McGuire, D. Brown, Helm, Garey, Kopke, L. Smith, G. Eckel, B. Stanley, B. White, J. Groves, Wandmacher, MacKay, Warren

method in't," for from the first utterance of "Beautiful Saviour" in the fall, until the last strains of the Alma Mater die away in the spring, the A Cappella is busy increasing its repertoire and polishing all the ragged edges. All year long these songsters are working unceasingly in order that the regular chapel periods as well as the annual concert tour in the spring may reach higher standards of perfection than ever before.

Membership is open to music majors and novices alike, of which the latter is in the majority. After try-outs, the actual selection is made according to voice quality and general musicianship.

Obviously a great deal of the success of this group is due to the understanding, ability, and interpretations of the conductor, Mr. Levi O. Dees.

# A C A P P E L L A C H O I R

# O R C H E S T R A

To about sixty-five students has come the thrill of belonging to the Southwestern College Symphony Orchestra. Playing at the Kansas State Teachers Meeting at Wichita, assisting with the All American and the Canadian-American programs were among the activities of the year.

The orchestra renders a great service as a "proving ground" for would-be composers, arrangers, conductors, and performers. To Margaret Jacobus, Elinor McIntosh, Genevieve Daves and Dorothy McConnell has been given the opportunity of performing concertos with the orchestra. The value to the student of hearing his own compositions, orchestration, and the chance to gain practice in conducting and performing cannot be over-estimated.



Director Luther O. Leavengood

It is through the tremendous contribution of the conductor, Dean Luther O. Leavengood, that the orchestra has achieved the position it holds today. Through his tireless efforts and accurate interpretations, the orchestra has made possible a fuller appreciation of symphonic works.

*First Violins:* J. Overmiller, McConnell, Daves, Green, M. Young, Arnette

*Second Violins:* H. Overmiller, Light, J. Smith, Handley, Weniger, Furuhashi. *Violas:* Waite, Burt, Marsh, Chapman. *Cellos:* Yerkes, McAllister, Isely, Volkland. *String Bass:* Wandmacher, Hildyard, Myers.

*Flute:* Harlan, B. Matthews, Doughty. *Clarinet:* Congdon, Gould. *Oboe:* K. Moore. *Bassoon:* B. White, J. Shaw

*Trumpets:* G. Brown, Backus. *Trombones:* Sims, McGuire, Priddy. *Horns:* Herschberger, McNeil, Reynolds, McIntosh

*Tympani:* Jennings. *Percussion:* Anderson. *Director:* Dean Leavengood





# B A N D

Start with a solid rhythm section, add an "in the groove" brass section, flavor with a dash of reeds, mix with the baton of C. O. Brown, top with a mixture of the "Dipsy Doodle" and the "Blues in B Flat," and there you have it—the Southwestern College Band. This band is made up of active, enthusiastic and "jivin'" individuals. It functions at all athletic events and in the true spirit of S. C., "is the last to leave the scene of action." It aids as an inciter of pep, provoker of good will and stimulator of loyalty as it resounds the strains of the Alma Mater with reverend fervor.

The repertoire of the band is varied, including classical, standard, modern and popular selections. Featured soloist again

this year was George Reynolds, who was aided by Marvin Bean, Dick Brummett and Rod Brown, in making up the ever popular trumpet quartet.

This year instead of making one long concert tour the band made numerous short excursions. These were climaxed by the concert tour to Emporia, including the basketball game there. The spring season was a busy one with various concerts and vesper services.

The marching band was under the leadership of Command Drum Major Jim Groves. With a group of fascinating flag swingers, supplemented by Maxine Dieterich and Jeanette Doughty, twirlers, much color was added to the band.

*Clarinets:* Dilworth, Cloud, Reschke, Kiser. *B. Dieterich, Boles, Anderson, Crick, Martin, Howard.* *Oboe:* K. Moore. *Bassoon:* B. White  
*Trumpets:* Reynolds, Bean, S. White, G. Brown, L. Smith, W. Thorne. *Trombones:* Hudson, R. Thorne, Sims, Priddy, McGuire, D. Brown. *Baritone:* Hodges. *Horns:* Herschberger, Matthews, Garey, McIntosh.  
*Tubas:* Earsom, P. Henderson  
*Percussion:* Hildyard, A. Miller, E. Resler  
*Drum Major:* Groves. *Twirler:* M. Dieterich. *Flagwavers:* Callison, M. Brown, Hazen, McConnell, Daves, Kiser. *Twirler:* Doughty. *Director:* C. O. Brown





*First row:* Caywood, Backus, Seipp, Rose, Roderick, Dix, Winters  
*Second row:* MacKay, D. Smith, Vann, J. Smith, Duncan, Tucker, Bratches, Balke, R. Robinson, Brothers, C. Barham  
*Third row:* P. Moore, Frank, Mr. Poundstone, Frazier, Hesler, Mr. Monypeny, Randall, Morris, Layden

## PI SIGMA PHI

Membership in Pi Sigma Phi, honorary athletic fraternity, is the dream of every athletically inclined man of the campus. Since its organization in 1923, the members have upheld its outstanding characteristics of skill, participation and sportsmanship.

It is necessary for a member of this organization first to letter in one major sport: football, basketball, tennis, track or golf. In order to qualify as a letterman, the aspirant must have received a certain number of points for actual participation.

Among its other activities, the two most outstanding highlights during the year are the initiation of new members and the spring banquet. During the initiation period almost anything might happen, and usually does; but on the "big night" of initiation everything happens!

On that night, the pledge proves whether he has all the qualities demanded of a "Pi Sig." At the end of a strenuous evening, each pledge is assured of the manpower of the club by the "swing" of the individual members.

Quite different from this brutality is the spring banquet, in all probability the most elaborate social event of the school year.

Guess who?





*First row:* McGuire, Hodges, Harper, Cloud, Garton

*Second row:* McCormack, Garey, C. Jones, K. Moore, Beck, G. Brown

*Third row:* Dieterich, Pinnick, F. Robinson, D. Moore, Owen, G. Eckel, Kantz, L. Smith, MacDonald, W. Thorne, H. Brown, Cook

## PI EPSILON PI

Thorne woos a reptile



BANG! . . . and the noise made by Pi Epsilon Pi was the loudest noise made on the campus this year. This new men's pep organization was organized the first of November, choosing a name whose initials spelled PEP. Organization was prompted by a feeling on the part of a small group of college men that there was a need on the campus for more spirit of competition in pep; hence its purpose: to stimulate pep on the campus of Southwestern College.

The first thing the club did to assert itself and its competition was to win the first prize in the float contest with its "And That's the End of That." The men put up Betty Jean Matthews as their candidate for MOUND-BUILDER Queen, and she was the one chosen by the student body.

Other appearances on the campus included the initial experiences of a draftee, which furnished the subject of the skit given at a basketball game, and a miscellaneous assembly program.

Hank Brown served as president.



*First row:* Doughty, Osterhout, B. Robbins, McConnell, Daves

*Second row:* Reschke, N. White, King, Daugherty, M. Brown, Hankins

*Standing:* Dilworth, M. Young, Schlenz, McNeil, C. Young, Yerkes, A. Miller, Zimmerman, M. Dieterich, Beck, Potter, R. Robbins, Dalbom

## J I N X J A N E S

Spreading pep and enthusiasm on the S. C. Campus is the aim of the twenty-eight girls who make up the Jinx Jane Pep Club. The initial appearance of the new uniforms came as a finale to the fall assembly program which preceded the Pittsburg football game. A presentation of "Snow White and the Seven Dwarfs" with Southwestern depicted as Snow White was given by the organization. Valentine's Day and the Wichita U. basketball game formed the nucleus for the second semester assembly—"Sweethearts of Basketball History."

Rush week activities for the club included a buffet supper in the Student Union, a picnic at the Dunbar farm and a formal parade with a second place marked up.

Marching to drum beat, they staged—during basketball season—a flash light drill between halves at the St. Benedict's formal party. Picnics with cheese-burgers as the chief bill of fare and various informal meetings completed the program for this year. Topping off the 1941-42 term, the club held its annual spring, formal banquet.

... And the toothbrushes weren't too adequate.





# K. K. P E P C L U B

"Years may pass, but we'll ne'er forget  
The fun we had each time that we met"—

and so ring the true sentiments of each of the loyal  
black and white clad pepsters K.K.'s.

"Zoom—I'm an airplane," and Lois Ewing glides  
swiftly through Bird's drug store. She is followed  
by Kathleen Hazen grinning under a fireman's hat.  
Dressed in a night-shirt and bonnet "George" Waite  
comes wailing after. Initiation week is on.

At a solemn candle-lit ceremony, following a tea  
at the home of Ann Dix, seven girls were formally  
admitted into membership. This installation service  
climaxed initiation week and rush parties when the  
girls were entertained at an old-fashioned box supper,  
a show and slumber party at the Matthews' home, a  
dance at Theda Grant's and a paddle dance.

During the first semester, alumni were entertained  
at a Homecoming banquet at the Brettun hotel. Chili  
suppers, coke feasts or meetings were held before each  
game. A take-off on "Hellzapoppin" furnished a novel  
assembly program. Spring was heralded by the group  
with a spring picnic, a formal banquet and a spring  
breakfast.

White gloves, horns and an effective between-  
halves skit were the contributions of the club to the  
enthusiasm of S. C. basketball games.



"After College—What?"

*First row:* Dix, Tuttle, Kiser, Morris, Ewing, Scott

*Second row:* Plank, M. White, Winters, Marsh, B. Matthews, Hazen

*Third row:* Shaft, Hull, Burt, Waite, B. Dieterich, Riederer, E. Bender, Couchman, Humburg, Eckert



# K A P P A R H O

The tables and booths of the College Hill Drug store serve as a setting every Thursday at 10:20 p. m. for handling of the affairs of Kappa Rho, men's pep club. After the prexie calls the meeting to order at the stroke of the Bisma-Rex clock, all late comers must suffer the sting of the paddle at the hands of the sergeant-at-arms, as also must all those who are not adorned in the white sweater.

The constitution of this club lists as its purpose, "To instill pep in the student body of Southwestern College," and in going about this job the boys opened the year's activity with a musical assembly program which in itself did no less than the constitution asks for. Calls came in during the year for three return appearances of the famed "Kappa Rho Male Chorus of Russian Querrs," who as before, performed under the talented leadership of Rod Bubbleinski Browniuski.

From the opening of the year when the thirteen pledges were given their initial "warm" welcome, until spring when the boys donned their white coats for the annual Sweetheart Formal, Kappa Rho boosted for victory, even to giving men to the services of Uncle Sam.



Grapenuts and tacks feel alike to bare feet.

*First row:* McNeil, F. Johnson, Dotson, Reynolds, Helm

*Second row:* Barnes, B. White, S. White, Kopke, Richardson, Seyb

*Third row:* Backus, Congdon, Stitt, F. Robinson, C. O. Brown, Light, R. Thorne, J. Smith, Stanley, D. Brown, Sims





*Seated:* D. Smith, Krause, Miss Evers, Brothers, McGregor  
*Standing:* Craig, D. Salser, Watkins, Priddy

## COLLEGIATE 4-H CLUB

One of the newer clubs at Southwestern is the Collegiate 4-H Club which was organized in the fall of 1940. Those who have previously been 4-H club members or those who are interested in 4-H club work, are eligible for membership. The purpose of the club includes the furtherance of the development of its members as well as fostering the best interests of Southwestern.

Under the leadership of Doris Smith, president, and Miss Helen Evers, sponsor, the club has promoted many useful projects as well as having their regular meetings once a month. In cooperation with the Cowley County Farm Bureau the members of the Collegiate 4-H helped with the Farm Bureau Section of the Cowley County Fair in the fall, judged contests, and visited different 4-H clubs in the county to help with their programs. The president attended the initial meeting of the Cowley County Nutrition Council. The spring found the 4-H'ers improving the appearance of our campus by some gardening projects.

♫ BUILDER  
*Musicana*





♫ BUILDER  
*Musicana*



---

D Y N A M I C S



The first suggestion which led eventually to the establishment of Pi Gamma Mu was made by Dr. Leroy Allen, Professor of Religion at Southwestern College, at a meeting of students majoring in economics, held in April, 1924. On December 1, 1924, seventeen charter chapters of Pi Gamma Mu were organized.



#### LOCAL OFFICERS

*First row:* Dr. Allen, Miss White

*Second row:* M. Dieterich, Martin

## P I

This National Social Science Honor Society now has over one hundred active chapters and several thousands of members. Its purpose is "the inculcation of all ideals of scholarship, and social service in the study of all social problems." It aims to instill in the mind of the individual a scientific attitude toward all social questions and to send out from our colleges and universities young people trained in scientific thought.

## G A M M A M U

The motto of the Society is the Bible quotation: "Ye shall know the truth, and the truth shall make you free."

Those chosen for membership are persons of high character, personality and scholarship with outstanding records in social science.

*First row:* Miss Herr, Mrs. Mitchell, Mr. Vinsonhaler, President Mossman, Dr. Allen

*Second row:* M. Dieterich, Mr. Spomer, Miss Cloud, Miss White, Martin, Maxwell, Hutsell







PI KAPPA DELTA: Dr. Allen, Schriver, S. White, Hiebsch, Dunlap

On alternate Wednesdays the English Club, composed of English majors and faculty members, met for an hour of literary culture. Highlights of the year were Mrs. Penrose Albright's review of John Buchan's *Mountain Meadows*, the Christmas buffet supper and the poetry contest. Janice Overmiller won the contest with her poem, "Winter." The club placed emphasis on adapting itself to a college student's life by holding informal meetings in the homes of the club members and planning several social activities. Betty Birchenough was president.

## PI KAPPA DELTA

Ability in forensic activities and successful participation in intercollegiate competition forms the basis for membership in this national forensic honorary fraternity.

More effective public speaking is the goal of every member. Achievement is stimulated by participation in intercollegiate tournaments. Kansas Delta Chapter is the only chapter which has had finalists in the national tournament for three successive years.

## ENGLISH CLUB

*First row:* Birchenough, Holman, Collinson, Miss Andersen, Bush  
*Second row:* Barber, E. Bender, Riggs, Miss Graham  
*Third row:* Eastmen, Hull, Baird, J. Resler, Miss Miller



*Seated:* Miss White, Fox, Miss Evers

*Standing:* Dilworth, Beck, Fry, Plank, M. Kirkhuff, Dalbom, Potter



## KAPPA OMICRON PHI

Leadership, ability, personality and a high scholastic average are among the qualities necessary for a home economics major to become a member of Kappa Omicron Phi, national honorary professional fraternity.

The four new members were assigned pledge duties in October and installation ceremonies followed two weeks later.

The annual Homecoming luncheon was attended by several former members; the annual Christmas exchange and party was the main social event of the year. Some of the members are planning to attend the national conclave in early summer at Cape Girardeau, Missouri.

Gamma Omicron is the local home economics club, and at least eight home economic credit hours are required for membership.

This large group of home economists get together for meetings twice a month. Phases of home economics which are not class room projects are presented and discussed. Outside speakers and group discussions are held.

The annual Homecoming breakfast for former members, picnic in honor of senior members and a valentine party were the social highlights of the year.

## GAMMA OMICRON

*First row:* Dilworth, Plank, M. J. White, Dix, Eckert, Potter

*Second row:* Martin, Brothers, Reimer, Dayton, Condit, M. Stanley, Callison

*Third row:* Beck, M. Kirkhuff, Miss White, Hague, M. Dieterich, Dowler, Varenhorst, D. Smith, Fry, Miss Evers, Dalbom, Fox





*First row:* Curry, Schriver, M. Dieterich, Dr. MacGregor, Miss Herr, Newlin, Hiebsch

*Second row:* Hiebsch, Lindberg, Dunlap, G. Hull, Krause, D. Salser, Cook

## INTERNATIONAL RELATIONS

The International Relations Club promotes interest in current affairs among the social science students. It is affiliated with the Carnegie Endowment International Relations Clubs. Social, political and economic problems are discussed at the bi-monthly meetings. The aim of the club is to coordinate student participation with guest speakers and present a program of challenging interest. The outstanding activity of the year was the special observances of Canadian-United States Relations in which the club cooperated.

Pi Sigma Gamma, known as Science Club, is opened each week by President Joe Shaw. At each meeting a scientific paper is presented, followed by an informal discussion. This spring the club has sponsored a series of lectures by prominent physicians and professors on the problem of cancer. Meetings are adjourned following the traditional serving of tea. Membership is open to any interested student.

## PI SIGMA GAMMA

*First row:* Couch, Volkland, Kantz, J. Shaw, Weniger, Watkins

*Second row:* Pinnick, Archer, Morrill, Gosting, Howard, Somers, Owen

*Third row:* Dr. Caton, Mr. Oncley, Phillips



*First row:* L. Hull, McNabb,  
Mrs. Redic, H. Applegate,  
Mrs. Stallcop, E. Thomas

*Second row:* E. Johnson, M.  
Young, G. Sellers, E. Everly,  
D. Davis, Anderson



## ORGAN CLUB

All those who have studied organ at Southwestern are eligible for membership in the Organ Club. This year under the sponsorship of Mrs. Cora Redic this study group has studied the organ compositions of living American composers.

Stress is laid on service playing in churches. Every year one minister presents a discussion of his denominational service and its particular problems.

Since its organization in 1934 the Organ Club has been honored with the dedication of three organ compositions by the nationally-known Roland Diggle of California, Garth Edmundson of Pennsylvania, and Robert Bedell of New York.

One of the youngest organizations on the campus is Alpha Mu, honorary musical fraternity. Although organized only last year, this group has sponsored several special programs of entire school interest. Music of American peoples, including South American and Canadian music, was chosen for study this year. Concluding this study, the organization participated in a program of Canadian-American music. Members aided in the ticket sale for the Minneapolis Symphony concert.

# ALPHA MU

*First row:* Bean, Dean Leavengood, Jacobus, A. Miller, J. Overmiller, Reynolds

*Second row:* Hudson, Anderson, Yerkes, J. Ryniker, B. J. Matthews, Herschberger, M. Smith, Harlan

*Third row:* Hildyard, G. Brown, Hodges, McGuire, McIntosh, Wandmacher, G. Matthews







*First row:* Shaft, Herschberger, Scott, H. Overmiller, M. Smith, A. Miller, Miss Sellers, A. Ryniker, Lawrence, M. Stanley, Green, Everly  
*Second row:* B. Matthews, M. McNeil, Beeman, Priddy, Garey, Helm, Stanley, B. White, L. Warren, Mayall, B. Dieterich, Broadie  
*Third row:* M. Dieterich, Isely, Furuhashi, Dieterich, McGuire, Carton, H. Brown, Mr. Dees, D. Brown, G. Eckel, L. Smith, Pruitt, S. White, R. Robbins

## GRACE CHURCH CHOIR

The Grace Methodist Church Choir, made up mostly of Southwestern students, and under the direction of Professor Levi O. Dees, has completed another year of faithful and inspirational service.

This Choir, as well as being on the job every Sunday, presented special seasonal cantatas at Christmas and Easter. Each church service, supplemented by a solo from a member of the Choir, was made richer and more beautiful.

Youth Fellowship, which is the new name for the former Epworth League, forms the link between the college and the church. The organization is divided into four divisions: World Friendship, Worship and Evangelism, Community Service, and Recreation and Leisure. Main events of the year were the ghost walk and reception for new students, the Christmas caroling and the extension groups sent to other communities.

## YOUTH FELLOWSHIP



*First row:* Franklin, B. Dieterich, Isely, J. Resler  
*Second row:* Dieterich, R. Robbins, G. Eckel, M. Smith, McGuire, Condit, Lindberg, Dayton, M. Hiesch



*First group, seated:* Cha. Humburg, Doughty, Mrs. Osen, Fox, Eckert  
*Standing:* Birchenough, A. Miller, Johnson



*Second group, first row:* Bartle, Wall, Hazen, L. Matthews, Scott  
*Second row:* Herschberger, Condit, Riederer, M. White, Boles

Smith Hall, with its Campus Cuties (Kampused Kids) and its other members, was the scene of the annual Open House, which was attended by college friends.

This opened the social whirl of the Smith Hall calendar. Scavenger hunting was the chief attraction of the Christmas walk-out which was climaxed by singing of carols.

Smith, besides its forty-one girls, houses many interesting events and memories "Shhhh—let down the fire escape" . . . "Somebody fixed my bed; there's soap and sugar in it." Cramming, hen sessions, and having fun—all a part of living in Smith Hall.



*Third group, first row:* Curry, Reimer, C. Bender, Zimmerman  
*Second row:* Dayton, Condit, Kiser, Jenike  
*Third row:* Newlin, Krause, M. Jacobus, Saye

*Fourth group, first row:* Potter, Schriver, Buckles, Hankins, Franklin, B. Robbins, Ewing, R. Robbins, Herschberger  
*Second row:* Legg, W. Smith, Volkland, E. Resler, Schlenz, C. Young, J. Resler, Beck, Hull, Eastman, Dalbom

## SMITH HALL

ALLISON: *First row:* Stateler, Priddy, A. Ryniker, B. Dieterich, Varenhorst, Hiebsch

*Second row:* Shaft, Fry, N. White, Miss Rosecrans, J. Ryniker, Harshberger, Mayall, F. Jones



HOLLAND: *First row:* Mrs. Carburn, Fulton, Close, Boles  
*Second row:* Martin, Barnes, Ball, Harper, B. White, Faragher, Pratt  
*Third row:* Kopke, Garey, Davis

## ALLISON HALL

## HOLLAND HALL

The campus' veteran society of after-midnight chats are the "Hollanders." These boys have definite hospitality characteristics distinguished from other dormitories on the hill. This group is of average studious nature, their study sessions sometimes being on the order of an indoor track, a card game or bed-spring "fixing" on the sleeping porch.

We quote from the 1940 MOUNDBUILDER: "The hall itself is surprisingly conventional, having four walls (finished on the outside with boards and on the inside with pictures), a recreation room and a parlor, and even study rooms complete with desks."

Under the leadership of Elizabeth Stateler, President, the girls of Allison Hall have continued to create the friendliness and cooperative spirit for which the big white house on the corner is noted. Other objectives were to be able to get into bed one night out of seven without encountering various and sundry articles donated by Mayall, Shaft and Co., and to finish supper before Sellers Stag Line arrived, en masse.



INTERNAT'L HOUSE: *First row:* Dunlap, Cook

*Second row:* Dieterich, Hiebsch, Mrs. Dieterich, Garton, Lindberg

*Third row:* V. Bland, Matthews, H. Bland, Brownlee

Cas-  
Ball,  
Pruitt  
Davis.

EAST HALL: *First row:* Monroe, McGregor, Riggs, Jennings

*Second row:* Crow, Hensley, Barber, Holman, Couchman, Mrs. Cobb

*Third row:* Seifert, Weeks, Grosdidier, E. Bender, J. Bender



## INTERNATIONAL HOUSE

Beginning as an inspiration in the mind of Ted Dieterich, International House has become an institution on Southwestern's campus. In the interim it has been the home of students from around the world.

It is the purpose of International House to provide and promote better understanding, closer friendship, and finer fellowship among students of various races and nationalities. To accomplish this the boys have maintained an unwritten code of ethics which is unsurpassed on the campus.

## EAST HALL

The electric sign above the front entrance, "East Hall of Hospitality," introduces one to the atmosphere of this cooperative dormitory. Besides late hour gossip sessions and midnight snacks the girls enjoyed several social events. The fall walk-out saw them having a picnic at Strader's Glen. Also important were the Christmas party, decorating for Homecoming and the Saturday night taffy parties. The East Hall tradition of marking the days before Christmas with toys or dolls was observed.

The housemother was Mrs. Edna Cobb, and the house president, Elma Monroe.





*Top, first row:* E. Collinson, G. Peden, C. Craig, J. Shaw  
*Second row:* Davis, R. Robbins, G. Eckel, K. Collinson, L. Warren, R. Larson, H. Brown, Dr. Plum  
*Third row:* Sloan, Dr. Albright, Hudson  
*Lower, first row:* C. Barham, Klein, Little, Blair, Patton  
*Second row:* Dr. Albright, R. Larson, Mettling, Johnson, B. Brown, Garton, V. Bland, Duncan, C. Craig, R. Sommers

## FLYING BUILDERS

"Today you are learning what may mean life or death to you in another nine months," says Dr. Albright as he impressively teaches the Southwestern aeronautics classes the rudiments of a "flying builder."

This program of Civilian Pilots' Training has become increasingly important and serious this year since the United States is at war. The ten boys who enrolled in the flight class for the spring term swore to join the air corp section of enlisted reserve. A few of the boys who are trained will be ferry pilots—non-combatant and flight instructors.

Dr. Albright, the first C. P. T. promoter in the state to receive a private pilots' license under the C. A. A. program, has been instrumental in keeping and increasing this phase of Southwestern college training.

♫ BUILDER  
*Musicana*



C Y M B A L I S



♫ BUILDER  
*Musicana*

L I S M



I

"to  
pers  
men  
soci  
by t  
Mar  
Pott  
Holl

arra  
initi  
initi  
inter  
In s  
the

SC

fresh  
here  
stud

Page 5



*Seated:* Miss Miller, Hildyard, L. Hull, Shaft, B. Dieterich  
*Standing:* Caywood, Anderson, Baird, Backus, M. Dieterich, Potter, Humburg

## INTER-SOCIETY COUNCIL

The purpose of this governing body is "to regulate inter-society relationships." The personnel of the Council includes a faculty member and two representatives from each society: the president and a member elected by the society. Officers this year were: Miss Margaret Miller, president; Mary Kathryn Potter, secretary first semester; and Lois Hull, secretary second semester.

Among the duties of the Council are arranging dates for society plays, rush weeks, initiations and parties. A new project initiated this year by the Council was the inter-society parties in the student union. In short the Council regulates all actions of the societies.

## SOCIETIES

Very frequently is the remark made by freshmen at S. C. "Everyone is so friendly here!" That is the true sentiment of every student who has been on our campus. This

friendly atmosphere is partly the result of the effective work of our literary societies. New students often ask why we have the literary societies instead of fraternities and sororities. This cannot be answered without taking a glimpse at a little of Southwestern history.

A fraternity was organized in 1889, but was disbanded in 1897 by request of the trustees because it was not in harmony with the college program. After that a demand arose for social groups. As a result the literary societies were organized. Since that time there have been many literary societies. They have changed names, organized and disbanded many times. The four oldest groups, the Belle Lettres, the Athenians, the Sigma Pi Phis and the Delphians have been active for over forty years.

Interests in societies grow and wane from time to time, but societies are a definite element on our campus. Without them S. C. would lose much of her social program.



*First row:* Marsh, Daves, McAllister

*Second row:* Waite, Dickinson, Burt

## BELLE - ATHENS

Starting the year with rush activities, cow-hands and tenderfeet from the B-A Dude Ranch gathered at Old Kickapoo Corral for an evening around the campfire with singing and plenty of hot dogs, Western style. Mary K. Potter and Tommy Backus were the efficient rush captains. The following Saturday night a stopoff was made at a western inn where directions were given for a scavenger tour of El Winfieldo and the surrounding range. Later in the evening, after all the strays had been gathered up, refreshments were served from the "bar" and a program presented by La Mesa Stars. Wagon wheels rolled once again for the Last Round-Up. Following an evening of barn dancing and games a ranch supper was served.

Pledge week was stretched to cover a semester of obedience from the pledges. Red and yellow pledge caps, reminiscent of the 1941 license plates, made their appearance every Thursday, Saturday or game day. Failure to comply with regulations and reasonable requests was stored in the memory of old members for future reference. Informal initiation was held on the downtown streets at the beginning of second semester. Pledges who yielded to temptation and rode downtown soon became adept at "assuming the angle." The impressive and beautiful formal initiation came a week later. Several additional students were pledged second semester.

The melodramatic spine-tickler, "Death Sends for the Doctor," was the Belle-Athens contribution to the one-act play contest.

H. Taylor, Hudson, Congdon,  
Osterhout, C. Bender



*Seated:* Ditamore, Hum-  
burg, E. Resler, Jackson,  
Potter, Backus

*Standing:* Wilson, D. Smith,  
Lewis



Hildyard, Reimer, J. Resler,  
McConnell, Crow, Mc-  
Queen, Hiebsch



Black, Barnes, Caywood,  
Blair, Fulton, Froman







HONORS. *First row:* Backus, Barnes, Caywood, Hildyard  
*Second row:* Humburg, Lewis, Potter, Reimer  
*Third row:* J. Resler, H. Taylor, Wilson, I. Zimmerman

## BELLE-ATHENIANS PLAY

An informal Halloween party was held in the basement of the C. O. Brown home, appropriately decorated with skeletons and eerie lights. History making events were the two inter-

society parties held in the Student Union. Final social activity of the year was the annual spring *banquet held* May 1.

In intramurals the Athens were runners-up in the first bracket in basketball, and the Belles copped honors in badminton and volleyball.

As a result of a mishap in the society hall, an evening was spent in clearing away the remnants of the ceiling, after which the girls served sandwiches and coffee to the hard-working boys.

The annual play presented in April under the direction of Miss Helen Graham was "Squaring the Circle," a three-act Russian comedy. The scene was the Moscow of 1928 when such a thing as marrying for love might be all right for a democracy, but definitely beneath a member of the Russian proletariat. In spite of mumps and the Russian ideology, love triumphed at last.

BELOW. *First group:* Dunlap, Archer, D. Henderson, Light, E. Johnson, I. Zimmerman, Howard  
*Second group:* McCormack, W. Smith, Morrill, Herschberger, Newlin, Kiser, Plank, J. Shaw



# S I G M A - D E L P H I

The Sigma-Delphi league started the '41-'42 year in a big way with the sponsoring of an alleged "World Series." Rushees were put through the paces in the hopes that they would chalk up a good score by promising to "play ball" with the organization, and become life members.

Inning one was held at Richardson Hall where Sigma-Delphi made the first strike and the rushees made their first hit. At the orders of the umpire the rushees and members "took a walk," or rather a hayrack ride to Strader's Glen to add another inning to the game.

With the bases loaded the Sigma-Delphi came to bat with the final wind-up at the Brettun Hotel where the rushees hit three-baggers, and then ended with "home runs."

Following a different program this year the pledges were kept in suspense and as silent members of the club the entire first semester. But things were warmed up a bit second semester when the pledges were put through the rites of informal and formal initiation to become full-fledged members.

HONORS. *First row:* Anderson, Baird, Bean, Boles

*Second row:* M. Dieterich, Foster, D. Moore, Jacobus

*Third row:* McNeil, Shaft, M. Smith, S. White





*Seated:* Hazen, G. Eckel, B. Matthews, P. Miller, Pinnick, Bartle

*Standing:* Beeman, Youle, F. Lawrence



*Seated:* Priddy, M. Stanley, Fry, Doughty

*Standing:* Furuhashi, Frazier, M. Smith, B. White, Wandmacher



Birchenough, Anderson, M. Dietrich, Jacobus, Kelman, Schriver, Broadie, Franks, B. Robbins, Reschke, McIntosh, L. Hull



*First row:* Somers, Dalbom, McNeil, Pruitt

*Second row:* D. Brown, Schlenz, A. Miller, Zahn

## SOCIETY AND DRAMA

Turning melodramatic this year, Sigma-Delphi displayed its talent for the serious side of life with the presentation of two splendid performances. First semester they won the one-act play contest with the play, "Riders to the Sea." Second semester a Southwestern audience was entertained by "Margin for Error," a three-act play directed by Miss Helen Graham.

As the champion of the intramurals program, the Delphians display another side of this well developed society.

Sigma Pi Phi was called to order the first semester by the tall and stately blond president, Ann Anderson, while Delphi was led by a dynamic president, Steve White. The '42 May Queen, Maxine Dieterich, was chosen as second semester Sigma guide and her co-worker was Ray Baird, the efficient Delphian president.

Every Thursday night Richardson Hall came to life as S. C. students in "heels and ties" came expectingly, to enjoy another program provided by Sigma-Delphi. Business meetings concluded the evening's activities and the members would give a "We! Wi! Wo!," then proceed down the "77" for a coke at "Pop's" or continue to their dorms. These meetings plus the informal parties, picnics, and get-togethers helped to make Sigma-Delphi an up-and-coming organization. The culmination of the year's activities, an event which was looked forward to the entire year, came in the spring formal banquet held at the Brettun.

As the years pass, Sigma-Delphi members will look back on the year of '41-'42 at S. C. and remember the exciting game played that year when Sigma-Delphi kept the ball rolling to maintain their splendid record.

*First group, seated:* E. Bender, Harper, Buckles

*Standing:* Sanchez, Riggs, Phillips

*Second group:* McGuire, Handley, Hutsell, Baird, S. White, Shaft, L. Smith

*Third group, seated:* Beck, Jones, C. Young

*Standing:* D. Moore, Pruitt







*Seated:* Sims, R. Robbins, Weeks, Martin, Condit, Boles, Stateler

*Standing:* McNeil, S. Warren, Couchman, J. Smith, Hensley, Anderson, Stanley, W. Thorne, Owen, Sloan, Springer



*Seated:* Snyder, R. Thorne, Franklin, Bolay

*Standing:* L. Matthews, Scott, Morris



*First row:* King, Garey, Daugherty

*Second row:* Watkins, Warren, J. Bender, Dilworth, Richards, H. Overmiller, D. Salser



*First row:* B. Dieterich, Beck, Cha, Kantz

*Second row:* H. Brown, Richardson, Dotson



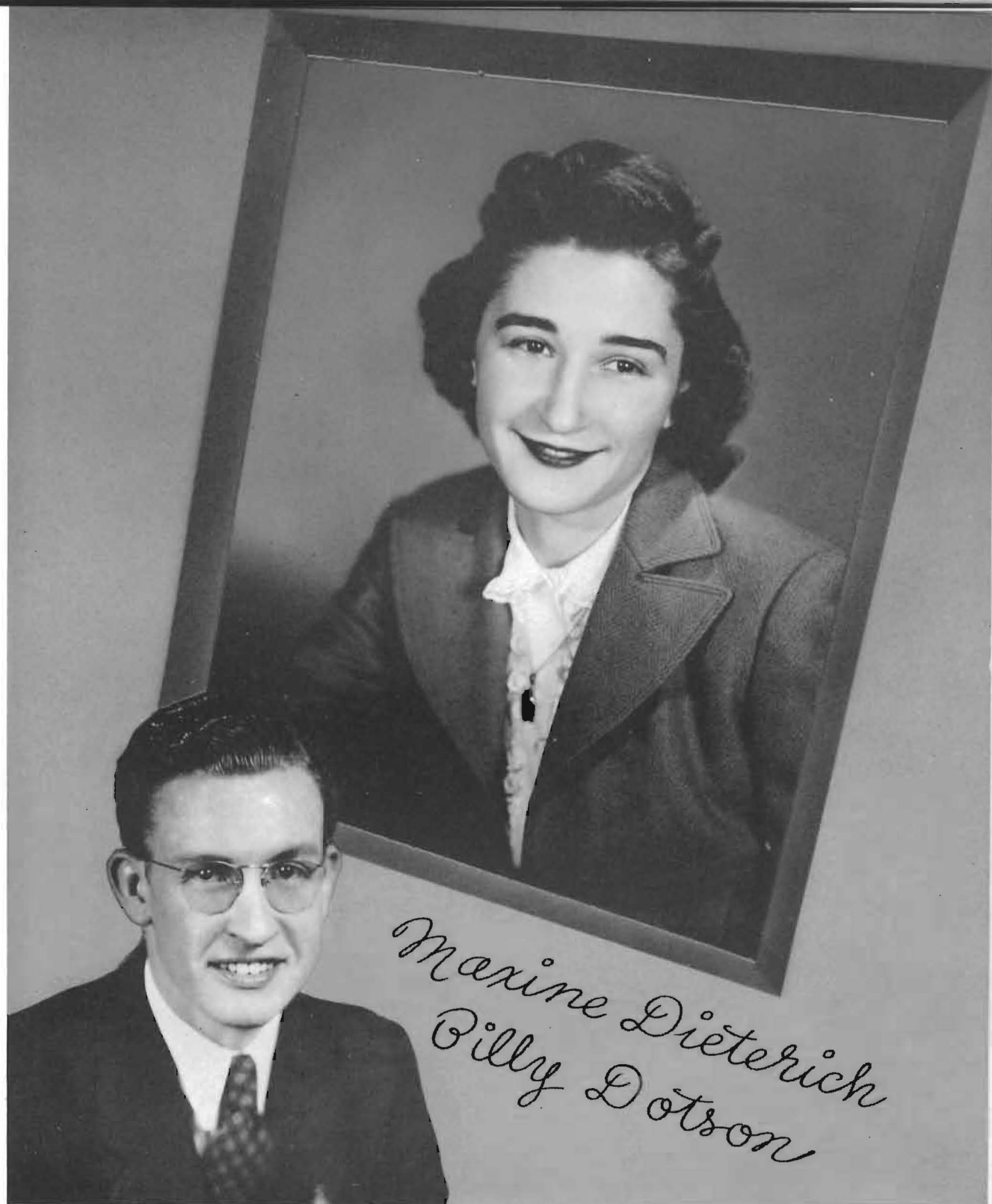
*Betty Jean Matthews*

M O U N D B U I L D E R   Q U E E N



*Marjorie Shaft*

H O M E C O M I N G   Q U E E N



MAY QUEEN  
*and*  
MASTER OF CEREMONIES





*Maxine Dieterich*

*Marvin Bean*



MOST REPRESENTATIVE BUILDERS



M. Dieterich, S. White, Humburg, Dotson, Anderson, Dix

## MASTERBUILDERS

"Outstanding" is the word used to describe these six seniors, elected by the student body to represent the true Builder spirit. To be elected a Masterbuilder is one of the highest honors which can be given to a senior.

Everyone who has ever climbed the seventy-seven, entered the portals of S. C., and become a part of its mechanism, knows the thrills which come from being a Builder. He knows the beat of its marching band, the sign of victory in sports, and the print of fine workmanship in its various departments.

As the name "Builder" indicates, we are building to maintain the high standards of S. C. Add the word "master" and you have one who is the best in this art of building—the very truest of the true Builders. Thus the title, "Masterbuilders" is given to those seniors who prove themselves most worthy.

# F O O T

# B A L L



*Top:* St. Benedict's tries around the end

*Center:* Aitson in an off tackle against Alva

*Lower:* Barham through the center at St. Benedict's



*Below, top:* Assistant Coach, Seay, Coach Nolan, Assistant Coach, Bratches

*Lower:* Co-captains Layden and Shaffer



The Builder football machine, coached by "Dick" Nolan, assisted by Clare Seay and Harold Bratches, started the season with a long string of victories, the highlight being the conquering of Wichita U. Oklahoma City University fell 7 to 0, and Sterling bowed 14 to 0.

S. C. went ahead to crush C. of E. 33 to 0 as Johnny Swafford dashed to three touchdowns. St. Benedict's lost the first conference game to Southwestern 13 to 0.

#### CONFERENCE SCORES

S. C....13	St. Benedict's...0
S. C....0	Emporia.....10
S. C....0	Pittsburg.....7
S. C....3	Fort Hays.....0



*Top:* St. Benedict tries an off tackle

*Lower:* Duncan intercepts an Alva pass

Then came defeat on a rain-soaked gridiron as the Builders lost to Emporia State 10 to 0. S. C. and Alva slopped about in a scoreless game as "General Mud" held the upper hand. Pittsburg held the Builders down with a 7 to 0 victory. Smashing Sterling 27 to 0 turned the tide towards victory.

Soon after Bethany was walloped 47 to 7. Alva was defeated 12 to 0 at Anthony. Snow

and Hays failed to hold the Builders as they took the Homecoming game 3 to 0—off Joe Vann's toe. Springfield took the last game 6 to 0.

Co-Captain Bob Layden made the All-Central end and Vic Bland placed as guard. Bob Robinson and Conrow Barham also made the C. I. C., and Bob placed on the first and Conrow on the second All-Kansas team.





## Football Squad

*First row:* R. Shaw, Frank. Vann, Swafford, Seipp, Coach Nolan, Shaffer, Wray, V. Bland, B. Landreth

*Second row:* E. Barham, Rose, C. Barham, Hesler, Aitson, Asst. Coach Seay, Morris, Wheeler, Duncan, McMahon

*Third row:* Roderick, Ward, H. Bland, Sloan, Ruelle, Barnes, R. Robinson, Armstrong, Pestinger, C. Landreth

The score stands 13 all! Thirty seconds to go! Forty odd yards to kick! The crowd is breathless, the team motionless, the coach gets down on one knee and everyone waits for that last thrilling second! Twenty seconds, fifteen, ten, five, slowly the ball is snapped back to the kicker. He steps forward and his toe sends the ball slowly and low over the middle of the uprights! The gun

sounds, and Southwestern HAS WON from Wichita U. for the first time in thirteen years!! Wheeler is carried in glory off the field, the band parades around the field, and the S. C. student body and hundreds of alumni surround the team as all bedlam breaks loose. Once again the Jinx has broken through, with the cooperation of that unbeatable Builder spirit.

# S. C. - 16

# WICHITA U - 13

Swafford goes over the line a second time and ties the score



The sports of golf, tennis and track come too late in the spring for us to give them full coverage. At the C. I. C. tennis meet this season the Southwestern players were defending champs, having carried off both singles and doubles honors last year. Olin Tucker was the singles man, and Don Conely and Dick Brummett took the doubles. This was the third successive year the Builder netmen brought home a Central conference championship.

Out for tennis this year were Charles McDermott, number one man, Dick Brummett in second place and Gerald Beck in third position. Steve White, Hank Balke and Jim Hesler vied for fourth position.

This season at Eldorado, S. C. won all events but one singles match. Other schools played were Pittsburg Teachers, Washburn and Wichita U.

Tom Backus upheld S. C.'s interests in golf this season. He placed third in the Conference last year.

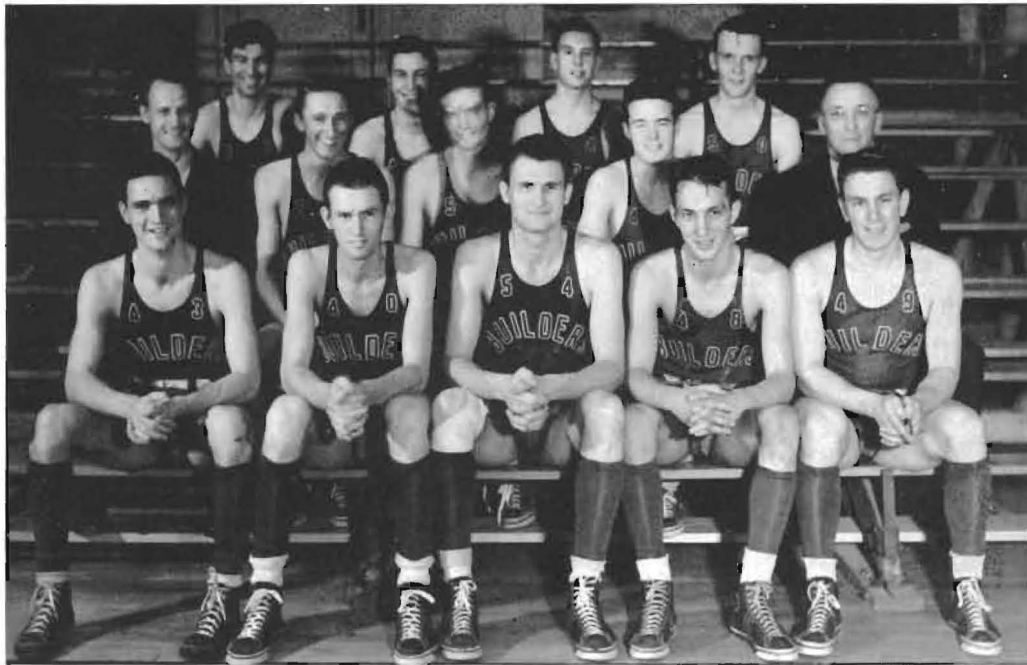
The 1941 tracksters made a nice showing in the C. I. C. Jim Gilbert tied for first in high jump with 6 feet and 3 inches. Bob Layden took second in the discus, Melvin Reeves second in the javelin and Bob Randall tied for third in the high jump.

This season in a triangular meet with Wichita U. and Bethel, Layden captured first in the discus, Caywood was second in the 440, Patton was second in the mile and Ross Barnes took first with the javelin.

*Top:* McDermott and Brummett  
*Second:* Backus  
*Third:* Caywood and Randall  
*Lower:* McDermott and Brummett



# GOLF - TENNIS - TRACK



*First row:* Tucker, Balke, P. Moore, D. Smith, Dix  
*Second row:* Assistant Coach Bratches, Klein, Frazier, McDermott, Coach Monypeny  
*Third row:* J. Smith, Miles, Harper, Lewis

## B A S K E T B A L L

Congrats to Coach "Bill" Monypeny, the purple cage mentor, for coming through with another fine season. The Builders finished second in the C. I. C., dropping only two games on the conference schednle.

Captain Carle Dix, veteran guard, led a well-balanced and experienced team over the hurdles. The "first fivers" included Phil Moore, center; Hank Balke and Olin Tucker, forwards; with Don Smith at the other guard position. This team was well supported by LeRoy Zahn, Jim Smith, Steve Frazier, Lawrence Klein, Charles McDermott, Bill Harper, Bob Miles, Jack Morris, Jim Hesler, Franny Ruefle and Don Lewis.

The Builders opened the 1941-42 court season here Dec. 4 with a 53-47 over-time victory over the Drury five.

Next came the Haymakers from Phillips U. The reserves won a 37-32 victory, after which the first squad took the main event 56-45.

One wintery morning our boys packed their suits and started on one of the most extensive tours ever taken by an S. C. basketball squad. The purple started the trip by winning a thrilling victory over Washburn; the final score, 47-44. The following night the Builders lost an over-time battle to the Wildcats of Baker U., 31-30. The squad then traveled to Murray, Kentucky, home of Murray State College. They were runner's up in last year's

National Inter-Collegiate Tourney, and downed the Builders 38-36 in an over-time battle. Marshall College, Huntington, West Virginia, stopped the Builders with a 57-30 win. The Southwesterners climaxed their trip, however, by defeating the Morris-Harvey quintet 57-34 in Charleston, West Virginia.

Home again the Builders won a high scoring victory of the Mexico Y. M. C. A. basketballers. Balke's 16 points helped roll up the 72-34 margin.

The Builders crammed the hemp with 19 consecutive charity losses and hit consistently from the field to run up a 57-45 count over the Pittsburg Gorillas. Tucker dropped in 20 points to lead the scoring. On the return engagement on the home court, however, the Gorillas topped us with a 51-42 victory.

The purples dealt the Wheatshockers misery in both contests, winning the first contest here 50-24, and annihilating them on their home court 56-31.

The Builders rolled over Emporia State, 60-39, but later the Hornets stung them 35-34, as Balke's one-handed shot refused to drop.

*Top:* Frazier puts one in against the Ravens

*Center:* Long shot by Tucker against St. Benedict

*Lower:* Balke's famous one-handed shot goes in against Emporia







1942

### SCORES OF THE SEASON CONFERENCE

S. C. ....	47, Washburn....	44
S. C. ....	57, Pittsburg....	45
S. C. ....	50, Emporia....	39
S. C. ....	22, Pittsburg....	51
S. C. ....	60, St. B. ....	36
S. C. ....	50, Washburn....	23
S. C. ....	34, Emporia....	35
S. C. ....	54, Hays.....	33
S. C. ....	58, St. B. ....	36
S. C. ....	60, Hays.....	52

*Top:* McDermott bats one down from Mexico Y. M. C. A.

*Center:* Emporia makes one against the purple

*Lower:* Balke makes a charity toss against Wichita

The Ravens of St. Benedict's were unable to stop the Builders during either tilt. In the first encounter the purples coasted through with a 60-36 win, with Don Smith receiving scoring honors. In the second tilt the Builders copped a 58-36 victory.

In the second encounter with Washburn, the Builders turned them back with the decisive victory of 50-23.

While at Hays the Builders tallied another C. I. C. victory, winning on a 54-34 margin. When the Tiger team invaded the home court, however, it was another story, and only in an over-time period did the Builders rally to defeat them 60-52.

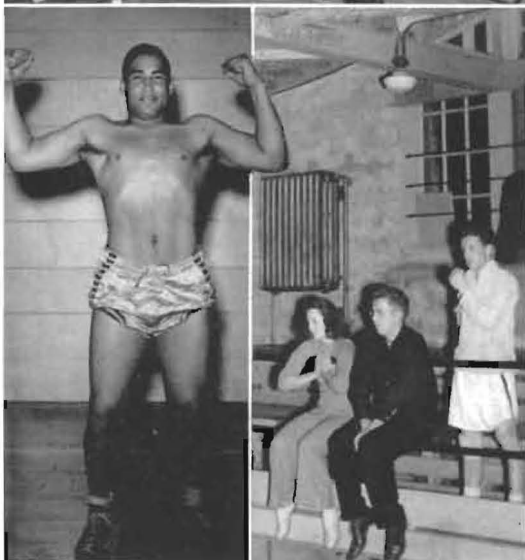
## S. C. Sets New C. I. C. Scoring Record

Southwestern's cage crew this year was rated as one of the finest offensive clubs in school history. They set a new record in C. I. C. scoring with an average of 51.2 points per game. Tucker and Balke were described as the "best forward combination in many a year." Tucker was the leading loop scorer, totalling 129 points in 10 games.

S. C. was invited to the National Inter-Collegiate Basketball Tournament at Kansas City. In the opening round the Builders defeated East Texas Teachers 47-43, Moore leading the scoring with 14 tallies. In the second round S. C. bowed to the Hamline crew in a 37-31 defeat.



Center: Dix in for set-up against Hays.



At Open House held in Stewart gymnasium March 20, the indoor intramural sports finals were played.

The Delphi's trounced the Pi Sigs in volleyball. In the boxing division Vic Bland (Upper Classmen) won the heavyweight. In middleweight Franny Ruelle (Pi Sig) annexed the title from Hi Randle (Pi Sig), and in welterweight Gordon Dieterich (Delphi) outpointed Glenn Patton (Upper Classmen). Gerald Beck (Delphi) nosed out Harold Mettling (Delphi) in badminton finals. In handball Asher Kantz (Delphi) defeated Bill Cloud (Delphi). Pi Sig Olin Tucker won over Kappa Rho Ross Barnes in table tennis.

The Delphi team won the double round robin basketball tournament.

Last fall Gerald Beck and Harry Pinnick (Delphi) defeated Steve and Byron White (Kappa Rho) for the tennis doubles title. The Delphi's also became the softball champs, winning over the Freshmen. Later in the spring the tennis singles, horseshoes, and the track and field competitions were held.

*Top:* Delphi champs of the basketball intramurals  
*Second:* Delphi and Kappa Rho tussle at basketball  
*Third:* Pi Sigs and Delphi playing volleyball  
*Lower:* Vic Bland, heavyweight boxer  
 Spectators, et cetera

# I N T R A M U R A L S

The Women's Athletic Association is truly representative of co-ed pep and vitality on Southwestern College campus. W. A. A. membership includes the more active girls who wish an opportunity for organized athletic competition. Enthusiastic support of all Builder undertakings is particularly outstanding among the members of this organization.

Sponsoring various athletic activities, the W. A. A. last fall directed both a volleyball and a badminton tournament. Spring saw the members swinging the bat in baseball tournament, and the swish of racquets and hollow plop of tennis balls told of co-ed competition on the tennis court. The highlight of the year came for a select group who attended an invitational Play Day at McPherson College. For those spending extra time special awards are given. Miss Lillian Cloud is advisor.

Those girls who are willing to give more time and energy to the sports in order to gain awards may become "Builderettes." This is the name given to a special division of the Women's Athletic Association. The awards are given according to a point system—so many points for participation in various events.

## WOMEN'S ATHLETIC ASSOCIATION



*First row:* Scott, Weeks, Herschberger, M. Stanley, Bolay, Richards

*Second row:* J. Resler, Vaughn, Riederer, Pinks, Curry, Hiebsch, C. Young





*Top:* In the outer corner the Frosh are making ready to paint the "S." Class Day makes itself known with tug-of-war, that age-old battle on the creek, and—well, you figure the next one out.

*Left, lower:* Initiations came in September and October—both dormitory and society.

*Right, lower:* Homecoming was a dreary, drizzly day, but no S. C. spirits were dampened. The band carried on "rain or shine," followed by the Jinx Janes and the Belle-Athenian floats. The Homecoming Queen was there, too.

# STORY OF

*Top:* The Belle-Athenians introduced the football season with a program on football—and a little horse-play. Sigma-Delphi won the one-act play contest, and then came exams. Far, far into the night . . . We'll never forget "the hill" in the snow season.

*Inner, center:* The girls quartet was one of the biggest hits of the season. In February was Dad's Day, so at the half of the Pittsburg Teacher's basketball the K. K.'s brought back memories of when Dad was in college. Tommy and C. O. helped put pep into the basketball games.

*Lower, left:* In the spring a young man's fancy . . . And the Pi Sigs have their initiation.

*Lower, right:* Well, if Eckel didn't bring me any mail, I'll just have to read yours. Waiting around for room assignments gives everyone a good chance to take pictures. Thus the choir trip ends our year of pictures.





### *It Isn't Nice to Point . . . .*

but mebbe Jo had to do it in this case! So-o-o-o, while it's being done, may we be pardoned if we point out a few qualities of Mid-Co craftsmanship.

Good plates that faithfully reproduce the values of your photographs. An understanding service that helps the editor and staff accomplish those much-to-be-desired objectives.

Complete sympathy with your problems and the ability to help work them out.

Just being POINT-BLANK about it—we think we are pretty good. We hope you too, feel the same way.

## THE MID-CONTINENT ENGRAVING COMPANY

*Wichita, Kansas*

# *You Need Not Give Up* GOOD TASTE

**I**n the coming months and years all of us will give up, temporarily, more and more of the fine quality to which we have become accustomed.

But this does not mean that we need relinquish our sense of good taste. It simply means that we must exercise greater ingenuity in the *selection* and *use* of the materials and facilities at our disposal.

In printing it means that paper and materials will be limited in quality and variety, and there will be fewer new type faces developed. Thus, the true art of the capable printer will become more important: his superiority will be emphasized by the ingenuity with which he creates works of beauty in spite of these limitations.

In selection, arrangement and spacing of type; in painstaking presswork; and in artful combination of available papers, inks and materials, the capable printer will find the means to inspire a greater demand for his services among those who appreciate finer things.

## MID-STATE PRINTING COMPANY

Printers, Binders and Cover-Makers for School Yearbooks

JEFFERSON CITY, MISSOURI



## WINFIELD SUBSCRIBERS

---

C. R. Anthony Co. . . . .	906 Main
Belt's Barbering Place. . . . .	Just across from the campus
Dr. K. A. Benson, Dentist. . . . .	103½ E. 9
Bloss & McNeish, Attorneys at Law. . . . .	104½ W. 9
Chamber of Commerce. . . . .	921 Millington
The Letha Clewell Studio. . . . .	210 W. 10
Cunningham Music Co. . . . .	113 E. 9
The A. B. Everly Lumber Co. . . . .	201 W. 9
First National Bank. . . . .	900 Main
Floyd's Shoe Shop. . . . .	816 Main
Dr. C. C. Hawke, M. D. . . . .	104½ W. 9
Herrick & Scott, Attorneys at Law. . . . .	104½ W. 9
Johnson's Book Store. . . . .	811 Main
Kerr's Women's Wear. . . . .	112 E. 9
La Gonda Hotel. . . . .	222 E. 9
Drs. Martin & Hilfinger, Dentists. . . . .	103½ E. 9
Dr. C. M. McCue, Dentist. . . . .	104½ W. 9
Morris Funeral Home. . . . .	803 Loomis
Pierce Book Store. . . . .	810 Main
Drs. Ralls and Bernstorff, M. D. . . . .	104½ W. 9
Elmer Z. Reeve, Winfield Bus Service. . . . .	1403 Olive
Regent Theatre. . . . .	1022 Main
The Shoe Mart. . . . .	920 Main
Drs. Snyder and Jones, M. D. . . . .	103½ E. 9
Stuber Bros. . . . .	1110 Main
Fred Study Clothing Store. . . . .	820 Main
Drs. H. A. and N. B. Truesdell, Dentists. . . . .	103½ E. 9
Winfield National Bank. . . . .	901 Main
Winfield Steam Laundry. . . . .	612 Main

# INDEX

	Page
Adams, Minette.....	29
Aitson, Vernon.....	22, 74
Albright, Dr. Penrose S.....	12, 15, 58
Allen, Dr. Leroy.....	12, 35, 49, 50
Andersen, Miss Annette.....	12, 50
Anderson, Ann.....	18, 53, 59, 63, 64, 71
Anderson, Marion.....	18, 34, 41, 42, 53, 66
Applegate, Hildred.....	53
Archer, Bill.....	26, 52, 62
Armstrong, Wiley.....	74
Arnette, Dorothy.....	26, 41
Backus, Thomas.....	15, 18, 37, 41, 43, 47, 59, 61, 62, 75
Baird, Ray.....	18, 50, 59, 63, 65
Balke, Winston.....	26, 43, 76
Ball, Robert.....	29, 56
Barber, Helen.....	18, 37, 50, 57
Barbour, Mr. Hobart L.....	12
Barham, Conrow.....	22, 43, 58, 74
Barham, Edd.....	22, 74
Barnes, Ross.....	29, 47, 56, 61, 62, 74
Bartle, Betty.....	29, 55
Baty, Clara.....	32
Baughman, Loyd.....	22
Bean, Marvin.....	14, 18, 42, 53, 63, 70
Beck, Gerald.....	16, 22, 35, 44, 66
Beck, Mary Lou.....	16, 22, 45, 51, 55, 64
Beeman, Marguerite.....	15, 29, 54, 61
Belt, Edward.....	18
Bender, Calista.....	15, 18, 55, 61
Bender, Ellenor.....	26, 36, 46, 50, 57, 65
Bender, Joy.....	29, 57, 66
Bergdall, Ruth.....	26
Bermond, Helen.....	26
Berry, Delmar.....	22
Birchenough, Betty.....	22, 36, 37, 50, 55, 64
Black, Phyllis.....	31, 61
Blair, Etyl.....	26, 37, 58, 61
Bland, Hiawatha.....	29, 57, 74
Bland, Victor.....	26, 34, 57, 58, 74, 80
Blood, Alice Mae.....	29, 33
Bloss, Winona.....	28
Bolay, Rachel.....	29, 66, 81
Boles, Daniel.....	16, 18, 38, 56, 63, 66
Boles, June.....	26, 42, 55
Bratches, Harold.....	13, 15, 18, 43, 72, 76
Briggs, Mr. Ralph.....	13
Briscoe, Barbara.....	29
Broadie, Wanda.....	22, 33, 37, 40, 54, 64
Brothers, Helen.....	22, 34, 48, 51
Brothers, Kenneth.....	22, 43
Brown, Mr. C. O.....	5, 13, 42, 47
Brown, De Vere.....	29, 40, 42, 47, 54, 64
Brown, Grover.....	16, 22, 33, 34, 40, 41, 42, 44, 53
Brown, Henry.....	15, 26, 36, 40, 44, 54, 58, 66
Brown, Marjorie.....	26, 42, 45
Brown, Ronald.....	18, 39
Brown, William.....	29, 58
Brownlee, Lynn.....	29, 57
Brummett, Richard.....	18, 75
Buckles, Jane.....	29, 40, 55, 65
Burt, Dr. Charles E.....	12
Burt, Genevieve.....	29, 41, 46, 60
Bush, Helen.....	26, 50
Callison, Louise.....	26, 42, 51
Casburn, Mrs. Mahel.....	56
Caton, Dr. Willis B.....	12, 34, 52
Caywood, Albert.....	22, 43, 59, 61, 62, 75
Cha, Dablia.....	26, 40, 55, 66
Chapman, Wilma Jean.....	22
Chavez, Robert.....	18
Close, Leon.....	29, 56
Cloud, Bill.....	26, 38, 42, 44

	Page
Cloud, Miss Lillian.....	12, 49
Cobb, Mrs. Edna.....	57
Collinson, Euid.....	58
Collinson, Frances.....	18, 50
Collinson, Kent.....	58
Compton, Vivian.....	18
Condit, Vena.....	26, 33, 38, 51, 54, 55, 66
Congdon, Keith.....	15, 29, 41, 17, 61
Conrad, James.....	29
Cook, Marvin.....	22, 33, 44, 52, 57
Couch, Dwight.....	22, 52
Couchman, Louise.....	15, 26, 46, 57, 66
Coyle, Marian.....	26
Craig, Charles.....	58
Craig, Frank.....	26, 48, 58
Crick, Barbara Le.....	29, 42
Crow, Thelma.....	29, 40, 57, 61
Curry, Nancy Jane.....	22, 35, 52, 55, 81
Dalbom, Lou.....	8, 16, 22, 38, 45, 51, 55, 61
Daugherty, Margaret Ann.....	30, 45, 66
Daves, Genevieve.....	30, 41, 42, 45, 60
Davis, Dorothy.....	53
Davis, Herbert.....	22, 56, 58
Dayton, Katharine.....	22, 31, 51, 54, 55
Dees, Mr. Levi O.....	12, 40, 54
Deets, Mary Ellen.....	32
De Laughter, William.....	26, 34, 35
Dickinson, Roberta.....	30, 60
Dielmann, Miss Edith.....	43
Dielmann, Miss Fern.....	13
Dieterich, Betty Lou.....	15, 16, 22, 34, 39, 40, 42, 46, 54, 56, 59, 66
Dieterich, Gordon.....	15, 26, 33, 34, 40, 44, 54, 57
Dieterich, Maxine.....	16, 18, 33, 34, 40, 42, 45, 49, 51, 52, 54, 59, 63, 64, 69, 70, 71
Dieterich, Mrs. V. E.....	57
Dilworth, Jean.....	22, 36, 42, 45, 51, 66
Ditamore, Ora Mae.....	22, 40, 61
Dix, Ann.....	22, 46, 51
Dix, Carle.....	15, 16, 18, 43, 71, 76
Dooley, Miss Helen.....	32
Dotson, Billy.....	14, 15, 18, 47, 66, 69, 71
Doughty, Jeanette.....	30, 41, 42, 45, 55, 64
Dowler, Vera.....	26, 51
Duncan, Robert.....	26, 13, 58, 74
Dunlap, Betty.....	30
Dunlap, Dale.....	15, 22, 33, 34, 35, 36, 37, 50, 52, 57, 62
Dunlevy, Mr. R. B.....	13
DuPont, Maurine.....	22
Earsom, James.....	22, 31, 35, 42
Eastman, Rosalie.....	26, 50, 55
Ebright, Margaret.....	22
Eckel, Elbert.....	30
Eckel, George.....	23, 40, 44, 54, 58, 64
Eckert, Norma.....	26, 46, 55, 56
Essex, Harold.....	30
Evans, Supt. Evan E.....	12
Everly, Elizabeth.....	53, 54
Evers, Miss Helen.....	12, 48, 51
Ewing, Lois.....	30, 46, 55
Faragher, John.....	30, 56
Foster, Morrison.....	18
Fox, Gertrude.....	18, 51, 55
Frank, Kermit.....	18, 43, 74
Franklin, Ruth.....	30, 33, 35, 54, 55
Franks, Kathleen.....	26, 31, 61
Frazier, Steve.....	26, 43, 64, 76
Froman, Kenneth.....	30, 61
Fry, Le Nora.....	16, 18, 51, 56, 64
Fulton, Douglas.....	30, 56, 61
Furuhashi, Forrest.....	30, 41, 54, 64

	Page
Garey, John.....	23, 40, 42, 44, 51, 56, 66
Garton, Wesley.....	26, 40, 41, 54, 57, 58
Gettys, Marie.....	32
Gorsuch, Jack.....	23
Gosting, Louis.....	23, 52
Gould, Stanley.....	41
Graham, Miss Helen.....	12, 39, 50
Green, Ruth.....	26, 34, 40, 41, 54
Grosdidier, Eileen.....	26, 34, 40, 57
Groves, James.....	26, 40, 42
Groves, Mildred.....	26
Hague, Margery.....	26, 51
Hamilton, Mrs. Pearl H.....	12
Hamm, Billy.....	30
Handley, Helen.....	30, 33, 35, 41, 65
Hankins, Joy.....	23, 45, 55
Harlan, Churchill.....	26, 41, 53
Harper, Bill.....	30, 35, 44, 56, 65, 76
Harshberger, Valo.....	26, 56
Hazen, Kathleen.....	30, 42, 46, 55, 64
Helm, Arthur.....	32, 40, 47, 54
Henderson, Douglas.....	18, 34, 35, 62
Henderson, Paul.....	13, 18, 42
Hendricks, Leo.....	26
Hensley, Ruby.....	30, 36, 57, 66
Herr, Miss Ada M.....	13, 49, 52
Herschberger, Wanda Lee.....	26, 41, 42, 53, 54, 55, 62, 81
Hesler, James.....	43, 74
Hetzer, William.....	26
Hiebsch, Kenneth.....	16, 23, 33, 35, 36, 50, 52
Hiebsch, Marvina.....	26, 33, 34, 52, 54, 56, 57, 61, 81
Hildyard, Josephine.....	19, 36, 40, 41, 42, 53, 59, 61, 62
Hodges, Wendell.....	27, 40, 42, 44, 53
Holman, Dorothy Alice.....	19, 33, 50, 57
Howard, Carson.....	15, 30, 42, 52, 62
Hoyt, Le Roy.....	23, 34
Hudson, Emma Jane.....	23, 40, 61
Hudson, Homer.....	19, 42, 53, 58
Hull, Geraldine.....	32, 52
Hull, Lois.....	27, 36, 46, 50, 53, 55, 59, 64
Hull, Mrs. Wayne.....	34
Hull, Wayne.....	23, 34
Humburg, Margaret.....	16, 19, 46, 55, 59, 61, 62, 71
Hunt, Miss Ida Clawson.....	13
Hutsell, Margaret.....	19, 34, 49, 65
Isely, Katherine.....	15, 23, 40, 41, 54
Jackson, Evangeline.....	27, 33, 34, 36, 61
Jacobus, Margaret.....	19, 40, 53, 55, 63, 64
Jeffries, Robert.....	23, 35
Jenike, Marguerite.....	30, 55
Jennings, Helen.....	30, 34, 41, 57
Jensen, Mrs. Lenora.....	32
Johnson, Eva.....	19, 53, 62
Johnson, Franklin.....	23, 47, 58
Johnson, Joyce.....	27, 55
Johnson, Rev. Lyman S.....	13
Jones, Clifford.....	21, 44, 65
Jones, Flora.....	30, 56
Kantz, Asher.....	24, 38, 44, 66
Kelman, Elda.....	27, 64
Konerson, Annette.....	24, 35
King, Cecil.....	24
King, Vada Ruth.....	30, 45, 66
Kirkhuff, Glennys.....	27
Kirkhuff, Maxine.....	27, 51
Kiser, Joe.....	19, 40, 42
Kiser, Ruth.....	24, 42, 46, 55, 62

# INDEX—Continued

	Page		Page		Page
Klein, Lawrence.....	58, 76	Nelson, Dorothy May.....	20	Smith, Jack.....	28, 36, 38, 47
Knowlton, Donabel.....	27, 35, 38	Newlin, Jane.....	20, 52, 55, 62	Smith, James.....	24, 43, 76
Kopke, Charles.....	27, 40, 47, 56	Nolan, Mr. Richard.....	13, 72, 74	Smith, June.....	31, 34, 41, 66
Krause, Nora.....	19, 34, 48, 52, 55	Nutter, Francys.....	32	Smith, Leonard.....	15, 28, 40, 42, 44, 54, 65
Lamoree, Nina.....	24	Oncley, Mr. Lawrence.....	13, 52	Smith, Muriel.....	16, 21, 40, 53, 54, 63, 64
Landreth, Charles.....	74	Osen, Mrs. Zoe.....	55	Smith, Winifred.....	21, 55, 62
Landreth, Bill.....	27, 74	Osterhout, Jane.....	31, 35, 45, 61	Snyder, Lou.....	15, 31, 33, 35, 66
Larson, Robert.....	58	Overmiller, Hazel.....	31, 40, 41, 54, 66	Somers, Marvin.....	31, 52, 64
Lawrence, Dora.....	30	Overmiller, Janice.....	28, 41, 53	Sooter, Joyce.....	24
Lawrence, Frances Anne.....	30, 40, 51, 64	Owen, Robert.....	28, 44, 52, 64	Spomer, Mr. Elmer J.....	13, 49
Lawrence, Fred.....	27	Parsons, Mrs. Ellen.....	32	Springer, Ivan.....	24, 66
Layden, Robert.....	43, 72	Patton, Glenn.....	29, 58	Stallcop, Mrs. W. M.....	53
Leavengood, Dean Luther O.....	11, 12, 41, 53	Peden, Doris Highfill.....	32	Stanley, Bill.....	31, 40, 47, 54, 66
Legg, Charlotte Virginia.....	30, 55	Peden, Glenn.....	28, 58	Stanley, Margie.....	24, 51, 54, 64, 81
Lewis, Betty.....	19, 61, 62	Pestinger, Richard.....	74	Stanley, Shirley.....	24
Lewis, Don.....	30, 76	Phillips, Paul.....	31, 52, 65	Stateler, Elizabeth.....	28, 40, 56, 66
Light, Bradley.....	15, 30, 41, 47, 62	Pinks, Dorothy.....	31, 81	Steinberg, Miss Merle.....	13
Lindberg, Walter.....	24, 31, 52, 54, 57	Pinnick, Harry.....	21, 40, 44, 52, 64	Stiner, Fredia.....	31
Little, Albert.....	27, 58	Plank, Marjorie.....	16, 24, 40, 46, 51, 62	Stitt, Ronald.....	16, 21, 47
Long, Mr. C. H.....	32	Plum, Dr. William B.....	11, 13, 58	Stoops, Wayne.....	25, 34, 35
MacDonald, Fred.....	24, 41	Potter, Mary K.....	16, 20, 45, 51, 55, 59, 61, 62	Swafford, Johnny.....	28, 74
MacGregor, Dr. Rob Roy.....	12, 52	Poundstone, W. J.....	11, 12, 43	Taylor, Harold.....	21, 61, 62
MacKay, George.....	16, 19, 37, 40, 43	Priddy, Wilma.....	31, 40, 41, 42, 48, 54, 56, 64	Thomas, Miss Edna.....	53
Markwell, Violet.....	30	Pruitt, Ralph.....	31, 40, 54, 56, 64, 65	Thorne, Ralph.....	15, 16, 25, 42, 47, 66
Marsh, Jane Lee.....	30, 41, 46, 60	Randall, Robert.....	20, 43, 75	Thorne, Wayne.....	31, 42, 44, 66
Marsh, Dr. T. Reese.....	11, 12	Redic, Mrs. Cora Conn.....	12, 53	Tucker, Olin.....	25, 43, 76
Martin, Delmar.....	19, 34, 49, 56	Reimer, Veneta.....	24, 34, 51, 55, 61	Tuttle, Faith.....	28
Martin, Ilo.....	27, 34, 42, 51, 66	Reinbolt, James.....	31	Tuttle, Gerrie.....	25, 46
Matthews, Betty Jean.....	27, 34, 40, 41, 46, 53, 54, 64, 67	Reschke, Ruth.....	28, 42, 45, 64	Van Laningham, Geraldine.....	21
Matthews, Glenn.....	20, 42, 53, 57	Resler, Elizabeth Y.....	32	Vann, Joe.....	31, 43, 74
Matthews, Laurene.....	30, 55, 66	Resler, Elinor.....	28, 42, 55, 61	Varenhorst, Dorothy.....	28, 34, 51, 56
Maurer, Margaret.....	30	Resler, Joyce.....	24, 35, 50, 54, 55, 61, 62, 81	Vaughn, Joan.....	31, 81
Maxwell, Eugene.....	20, 49	Reynolds, George.....	20, 41, 42, 47, 53	Vinsonhaler, Mr. C. I.....	13, 49
Mayall, Lois.....	30, 40, 54, 56	Richards, Norma.....	31, 66, 81	Volkland, Bonnie Lee.....	28, 41, 52, 55
McAllister, Betty.....	30, 41, 60	Richardson, Adrian.....	15, 24, 47	Wagner, Nadine.....	28
McCall, Robert.....	27	Ried, Jeanne Fuhrer.....	26	Waite, Georgene.....	31, 41, 46, 60
McConnell, Dorothy.....	30, 41, 42, 45, 61	Riederer, Peg.....	28, 46, 55, 81	Wall, Elsie.....	31, 55
McCool, Virginia Lee.....	30	Riggs, Lorraine.....	20, 50, 57, 65	Wallace, Noel.....	25
McCormack, Kenneth.....	27, 44, 62	Robbins, Billie.....	28, 34, 45, 55, 64	Wandmacher, Herman.....	16, 25, 39, 40, 41, 53, 64
McDermott, Charles.....	30, 75, 76	Robbins, Ruthe.....	24, 45, 54, 55, 58, 66	Ward, Charles.....	31, 74
McGregor, Eva Mae.....	30, 34, 48, 57	Robinson, Alvin.....	28	Ward, Margaret.....	31
McGuire, David.....	15, 27, 40, 41, 42, 44, 53, 54	Robinson, Forrest.....	28, 44, 47	Warren, Leonard.....	21, 40, 54, 58, 66
McIntosh, Elinor.....	24, 40, 41, 42, 53, 64	Robinson, Robert.....	28, 43, 74	Warren, Samuel.....	21, 34
McKinney, Marjorie.....	32	Roderick, Bryce.....	24, 43, 74	Warren, Vera.....	31, 34, 66
McMahon, James.....	30, 74	Rose, Jack.....	20, 43, 74	Watkins, Bill.....	31, 35, 48, 52, 66
McNabb, Marian.....	24, 40, 53	Rosecrans, Miss Eva.....	56	Weeks, Betty.....	31, 34, 35, 36, 57, 81
McNeil, Mr. E. W.....	11	Ruelle, Franny.....	28, 74	Weniger, Delbert.....	31, 34, 41, 52
McNeil, James.....	15, 30, 33, 35, 41, 47, 66	Ryniker, Anita.....	20, 40, 54, 56	Wheeler, Floyd.....	74
McNeil, Margaret.....	54	Ryniker, Jeanette.....	20, 40, 53, 56	Wheeler, Patsy Jean.....	27
McNeil, Mary Ruth.....	16, 20, 34, 38, 45, 63, 64	Salser, Donald.....	31, 48, 52, 66	White, Byron.....	25, 40, 41, 42, 47, 54, 56, 64
McQuene, Charlene.....	31, 61	Salser, Everett.....	20	White, Miss Chalcea.....	11, 13, 16, 33, 49, 51
Mettling, Harold.....	20, 40, 58	Sanchez, John.....	31, 65	White, Frank.....	28
Miles, Bob.....	31, 76	Saye, Mary Frances.....	32, 55	White, Martha Jane.....	28, 40, 46, 51, 55
Miller, Azalea.....	15, 24, 40, 42, 45, 53, 54, 55, 64	Schlenz, Io.....	28, 45, 55, 64	White, Nancy.....	31, 40, 45
Miller, Miss Margaret.....	12, 50, 59	Schriver, Marguerite.....	24, 35, 36, 50, 52, 55, 64	White, Stephen.....	15, 16, 21, 42, 47, 50, 54, 63, 65, 71
Miller, Phyllis.....	27, 40, 64	Scott, Josephine.....	31, 46, 54, 55, 66, 81	Williams, Leila May.....	31, 40
Mitchell, Mrs. Lena.....	49	Scott, Mrs. O. B.....	12	Williams, Wendell.....	21
Monroe, Elma.....	20, 57	Seay, Mr. L. Clare.....	12, 16, 72, 74	Wilson, Curtis.....	21, 40, 61, 62
Monypeny, Mr. William.....	13, 43, 76	Seifert, Dorothy.....	31, 57	Wilvers, Jessie.....	28
Moore, Douglas.....	20, 44, 63, 65	Seipp, George.....	20, 43, 74	Winters, Clifford.....	25, 43
Moore, Keith.....	15, 31, 40, 41, 42, 44	Sellers, Miss Grace.....	12, 53, 54	Winters, Edith.....	28, 46
Moore, Phil.....	15, 24, 43, 76	Seyb, Speed.....	16, 24, 36, 38, 39, 47	Wray, Orville.....	28, 74
Morrill, Gerald.....	27, 52, 62	Shaffer, Truel.....	20, 72, 74	Wycoff, Paul.....	31
Morris, Eva.....	24, 40, 46, 64	Shaft, Marjorie.....	21, 34, 40, 46, 54, 56, 59, 63, 65, 68	Yerkes, Ruth.....	15, 21, 41, 53
Morris, Jack.....	31, 43, 74	Shaw, Joe.....	28, 41, 52, 58, 62	Youle, Martha.....	15, 31, 64
Mossman, Dr. Frank E.....	10, 49	Shaw, Ralph.....	74	Young, Cathryn.....	25, 36, 37, 55, 65, 81
Murray, Henry.....	24, 34, 35	Sims, Joe.....	28, 40, 41, 42, 47, 66	Young, Marjorie.....	25, 41, 45, 53
Myers, Mary Irene.....	28, 34, 35, 41	Sloan, Gene.....	28, 58, 66, 74	Zahn, Le Roy.....	25, 64
Nellis, Gilmer.....	31	Smith, Don.....	8, 24, 43, 76	Zimmerman, Ida Belle.....	25, 45, 55, 62
Nelson, Bob.....	31	Smith, Doris.....	21, 34, 37, 48, 51, 61	Zimmerman, Jo Anne.....	37