

M O U N D B U I L D E R

1949



ROBERT LLOYD

Editor

JOAN FENNEMA

Assistant Editor

STANLEY ABEL

Business Manager

GEORGE WEBER

Photographer

ELMA DANNENFELSER

Photography Editor

EARL W. SHAFFER

Adviser

SOUTHWESTERN COLLEGE

WINFIELD, KANSAS

The Student Body
of
SOUTHWESTERN COLLEGE

Presents



THE 1949 MOUNDBUILDER

YLD5111
355
M6
1949

A pictorial presentation in three divisions
portraying the life and activity of students
on the Southwestern college campus.

42322
SOUTHWESTERN COLLEGE LIBRARY

Act I

ACTIVITIES Page 21

Act II

SPORTS Page 55

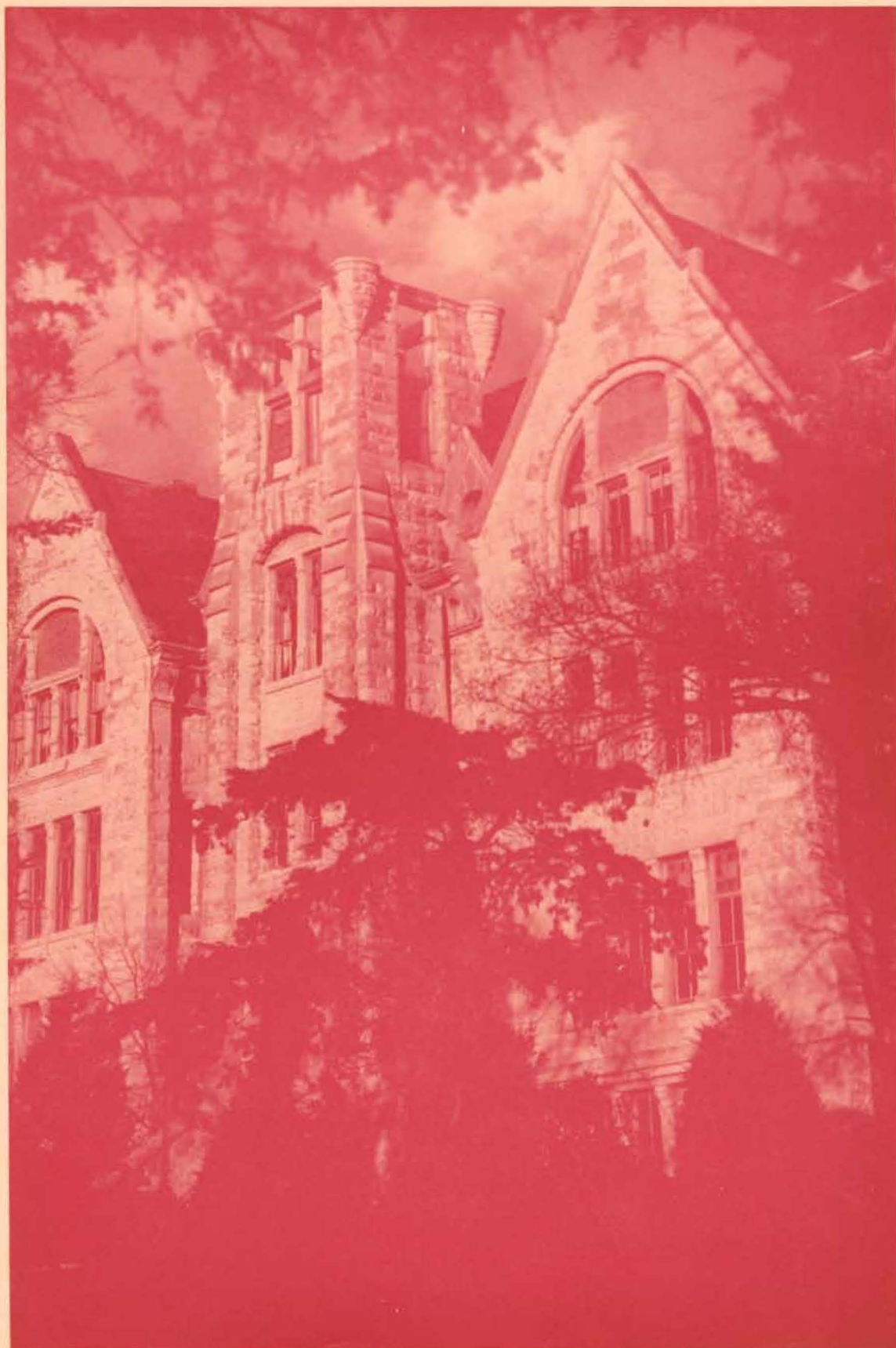
Act III

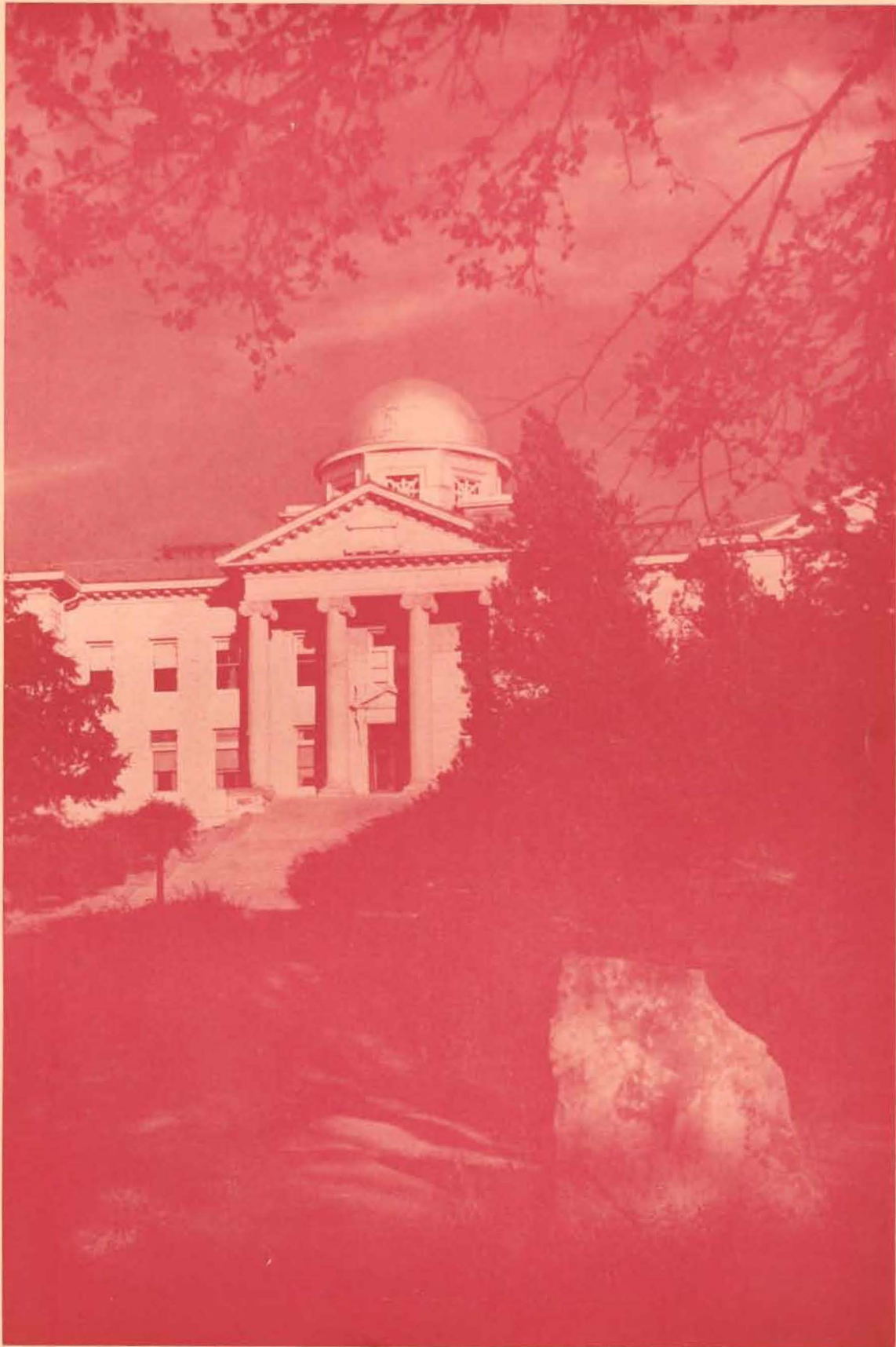
CLASSES Page 73

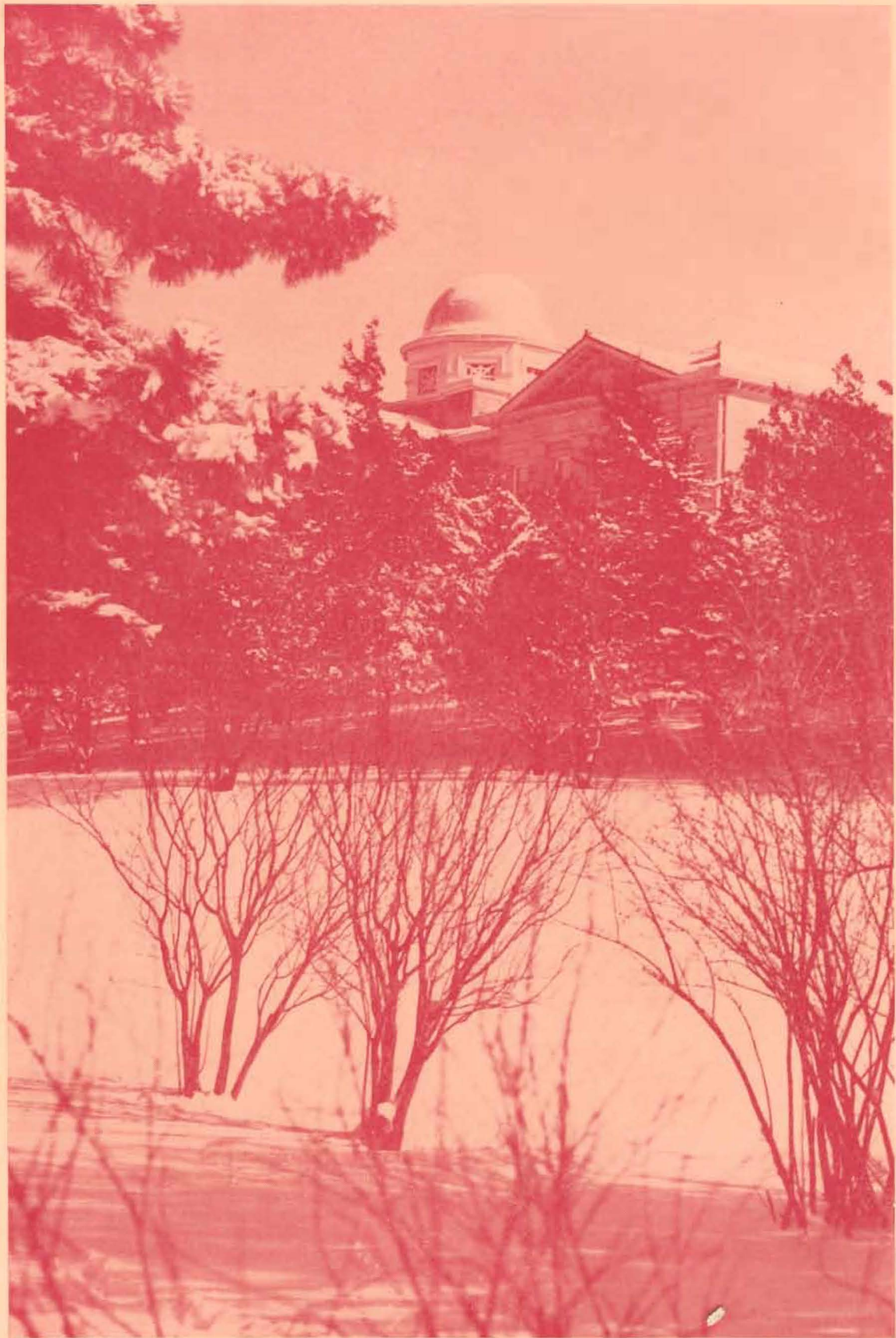
Curtain Call

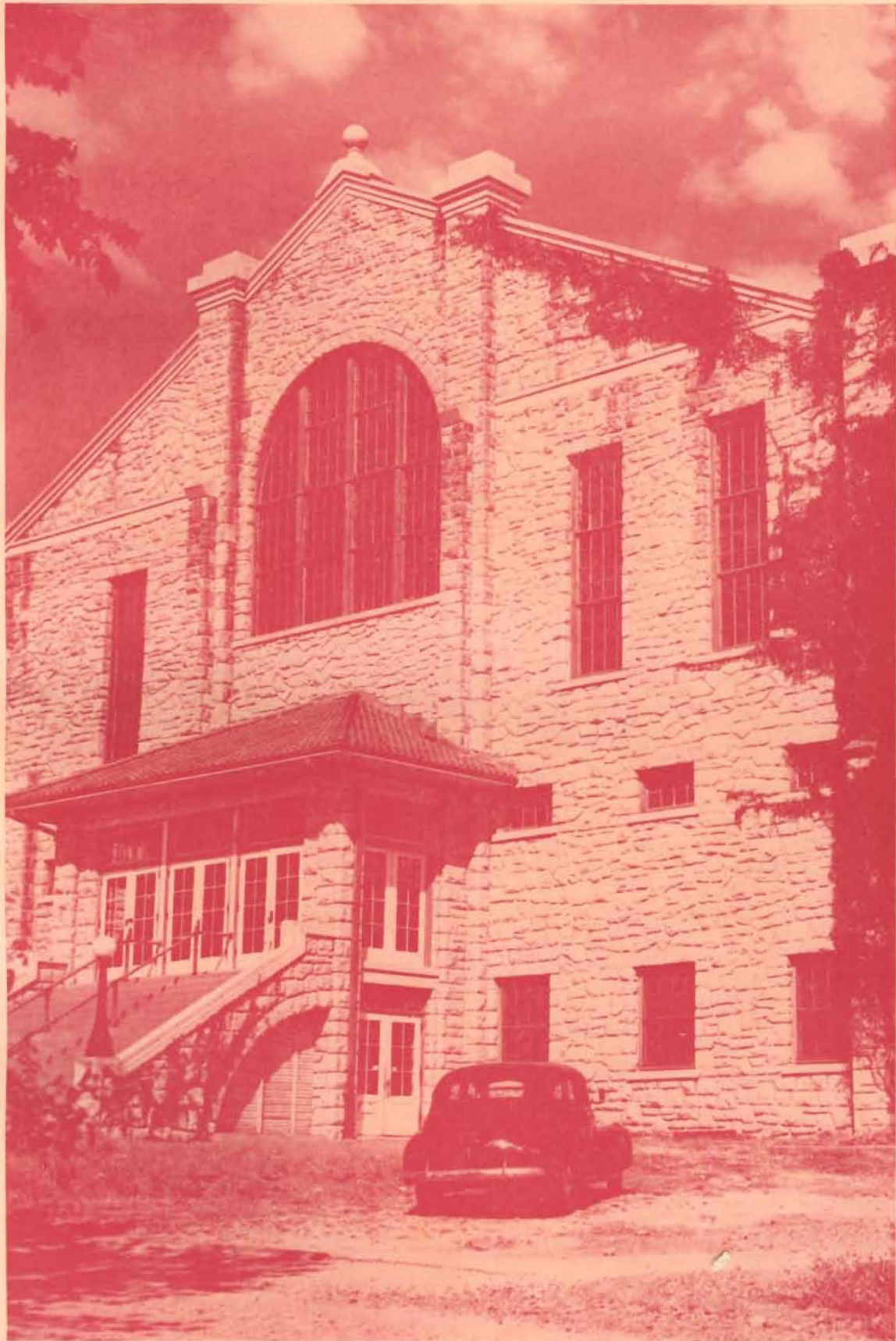
QUEENS, SNAPS Page 97

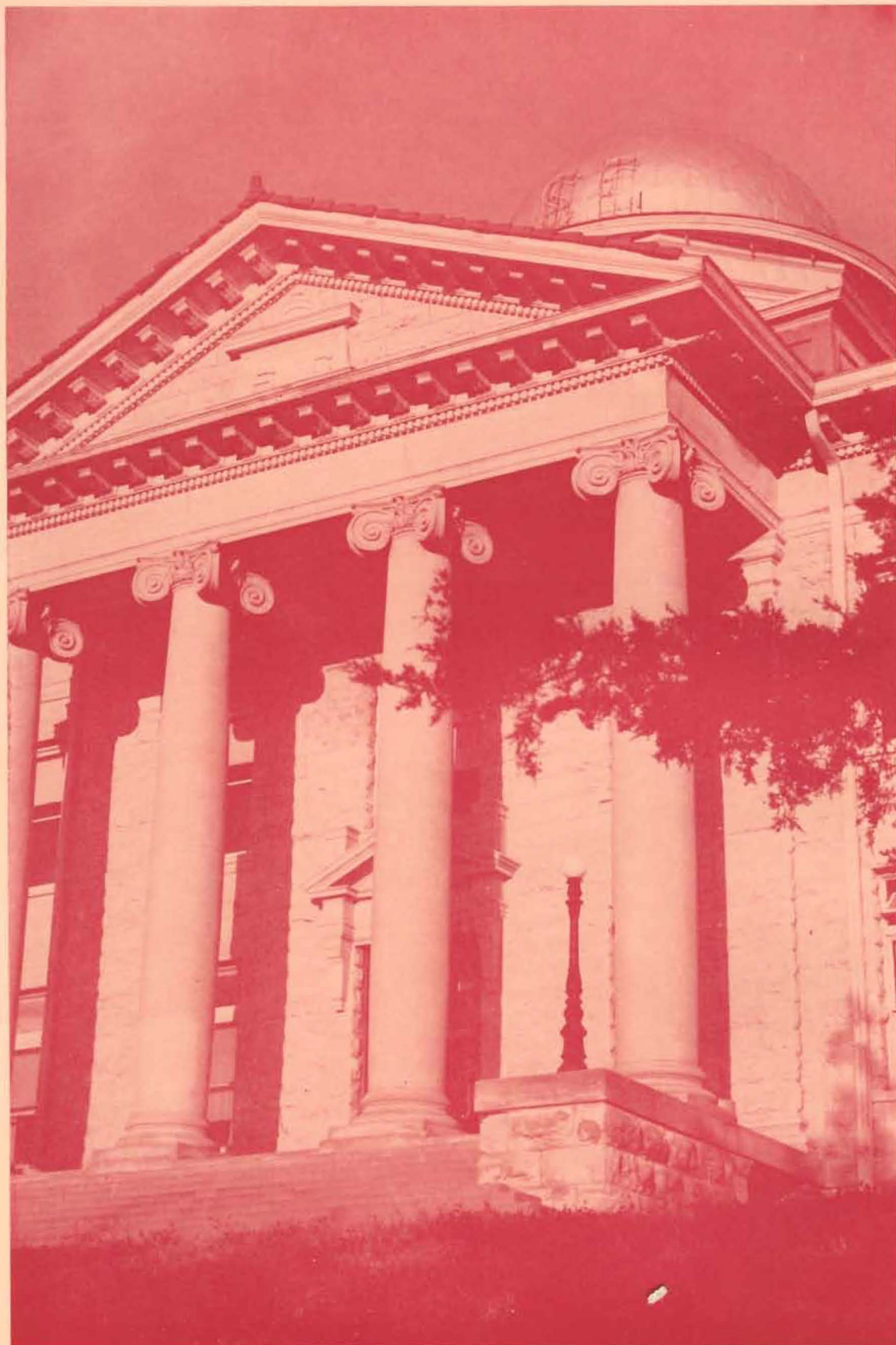












Page 8

CHIEF

Dr. Mearl P. C.
is now completing
trator. He came
May, 1945. Dr.
from Albion Coll



CHIEF DIRECTOR

Dr. Mearl P. Culver, president of the college, is now completing his fourth year as administrator. He came to Southwestern College in May, 1945. Dr. Culver holds an A.B. degree from Albion College, M.A. from the University

of Colorado, S.T.B. from Union Theological Seminary, and Ph.D. from Yale University. Southwestern has made much progress during the past few years under the auspices of his skillful leadership.

ASSISTANT DIRECTORS



WILLIAM MONYPENY

Dean of College

Associate Professor of Psychology

B.S., Kansas State College

M.A., University of Iowa



MILDRED SKINNER

Assistant Professor of Home Economics

Counselor of Women

B.S. and M.S., Kansas State College



EMERY W. McNEIL

Business Manager

A.B., Southwestern College



WILLIAM J. POUNDSTONE

Registrar

Professor of Education

Director of Summer Session

A.B., Southwestern College

M.A., University of Kansas

PRODUCERS

CARL S. BELL

Librarian

B.S., Ohio Wesleyan

M.A. and Ph.D., University of Washington

E. MARIE BURDETTE

Instructor in Piano and Organ

B.M., Winfield College of Music

B.M. and A.B., Southwestern College

ARTHUR S. Y. CHEN

Visiting Professor of Sociology

A.B., Cornell College

M.A., University of Chicago

Ph.D., University of Southern California

LILLIAN CLOUD

Associate Professor of Health and Physical Education

A.B., Southwestern College

M.A., Colorado State College of Education

ETHEL B. COLBRUNN

Assistant Professor of Modern Language

A.B., College of Wooster

M.A., Ohio State University

SUE JEAN HILL COVACEVICH

Instructor in Art

A.B., Southwestern College

DOROTHY E. CRANE

Assistant Professor of Biology

A.B. and M.A., University of Kansas

RUSSELL DAVIS

Assistant Professor of Physical Education

B.S., Kansas State Teachers College,
Pittsburg

M.A., University of Iowa





EDITH DIELMANN

Instructor in Expression and Dramatics

B.O., Chicago Musical College



FERN DIELMANN

Instructor in Piano

B.M., Winfield College of Music



FRED DITTMANN

Assistant Coach

Instructor in Chemistry

B.S., Dickinson College

M.A., University of Kansas



THEODORE H. EATON, JR.

Professor of Biology

A.B., Cornell University

Ph.D., University of California



HELEN F. EVERS

Associate Professor of Home Economics

Acting Chr. Division of Natural Science

A.B., Southwestern College

M.S., Kansas State College



LAURA N. FORD

Associate Professor of Voice

B.M., American Conservatory, Chicago

M.M., Eastman School of Music



HELEN GRAHAM

Associate Professor of Expression and Dramatics

A.B., Southwestern College

M.A., Columbia University



WILLIAM N. GRANDY

Assistant Professor of Philosophy

Director of Religious Activity

A.B., Lawrence College

B.D., Garrett Biblical Institute

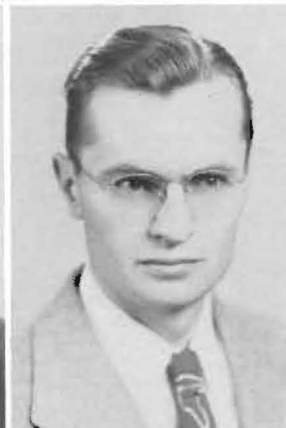
M.A., Northwestern University

JOHN D. HALE
Assistant Professor of Piano
 A.B., Carleton College



P. FREDRICK HALL
Assistant Professor of Voice
 B.S., Midland College
 M.S.M., Union Theological Seminary
 School of Sacred Music

JOHN D. HANSEN
Associate Professor of Speech
 A.B. and M.A., University of Iowa



C. ROBERT HAYWOOD
Instructor of History and Government
 A.B. and M.A., University of Kansas

PAUL W. HEALY
Assistant Professor of Mathematics
 A.B. and M.A., Ohio State University



JERRY M. HIGHFILL
Assistant Professor of Accounting
 B.S., Southwest Missouri State College
 M.A., Colorado State College

ELEANOR HOAG
Assistant Professor of English
Acting Chr. Division of Language and Literature
 B.S., Colorado State College of Agriculture and Mechanical Arts
 M.A. and Ed.D., Colorado State College of Education



ARTHUR D. KAHLER
Director of Athletics
 A.B. and Sc.D., Southwestern College



ASHER D. KANTZ
*Assistant Professor of Physics and
Mathematics*
A.B., Southwestern College
M.S., University of Illinois



CRESTON S. KLINGMAN
*Assistant Professor in Instrumental
Music*
A.B., York College
M.M., University of Michigan



W. ARNOLD LYNCH
Assistant Professor of Organ
B.M. and M.M., University of Kansas



DOROTHEA MILLER
*Assistant Professor of English
Librarian*
A.B., Southwestern College
B.S. in L.S., George Peabody College
for Teachers



BLAINE B. NOLAN
*Professor of Education
Chr. Division of Social Science*
B.S., Kansas State Teachers College,
Pittsburg
M.A. and Ph.D., University of Missouri
L.L.B., Cornell University



ERMA BRITTON SCOTT
Instructor in Secretarial Science
B.S., Kansas State Teachers College,
Pittsburg



GRACE SELLERS
Assistant Professor of Piano
B.M. and A.B., Southwestern College
M.M., Michigan State College



EARL W. SHAFFER
*Assistant Professor of Journalism
Director of News Service*
A.B. and M.A., University of Kansas

AURORA SMITH

Director of Radio Youth Choir

L.T.C.L. and F.T.C.L., Trinity College,
London

M.S.M., Union Theological Seminary
School of Sacred Music

ORCENITH S. SMITH

Assistant Professor of Voice

Chr. Division of Fine Arts

A.B., Friends University

L.T.C.L. and F.T.C.L., Trinity College,
London

M.A., Teachers College, Columbia
University



MURREL K. SNYDER

*Associate Professor of Economics and
Business Administration*

A.B., Southwestern College

M.A., University of Kansas



LEROY A. SPITZE

Associate Professor of Chemistry

A.B., Southwestern College

M.S. and Ph.D., Rensselaer Polytechnic
Institute

JEAN L. THROCKMORTON

Instructor of English

A.B., Friends University

M.A., University of Kansas



C. I. VINSONHALER

*Associate Professor of English and
German*

A.B., Highland College

M.A., University of Kansas

GEORGE C. WHIPPLE

Assistant Professor of Bible and Religion

Director of Public Functions

A.B., Albion College

S.T.B., Boston University School of Theology

Ph.D., Boston University



ROSS O. WILLIAMS

Associate Professor of Violin

B.M. and A.B., Southwestern College

M.M., University of Michigan

STAGE MANAGERS



LYMAN BURGESS
Assistant Business Manager



ANNA LAWRENCE
Bookkeeper



VIRGIL C. WELCH
Director of Public Relations



WALTER BYNUM
Superintendent of Buildings

ROBERT DAVIDSON
Admissions Counselor



TECHNICIANS

MARGARET BLAKE

Dietitian

DOLLYE B. BLOOMER

Secretary-President

NANCY CRAMER

Secretary-Registrar

DOROTHY KING

Secretary-Business Manager

MABEL CASBURN

Matron-East Hall

MABEL COOPER

Matron-Holland Hall

MABEL E. MEADOWS

School Nurse

Matron-Allison Hall

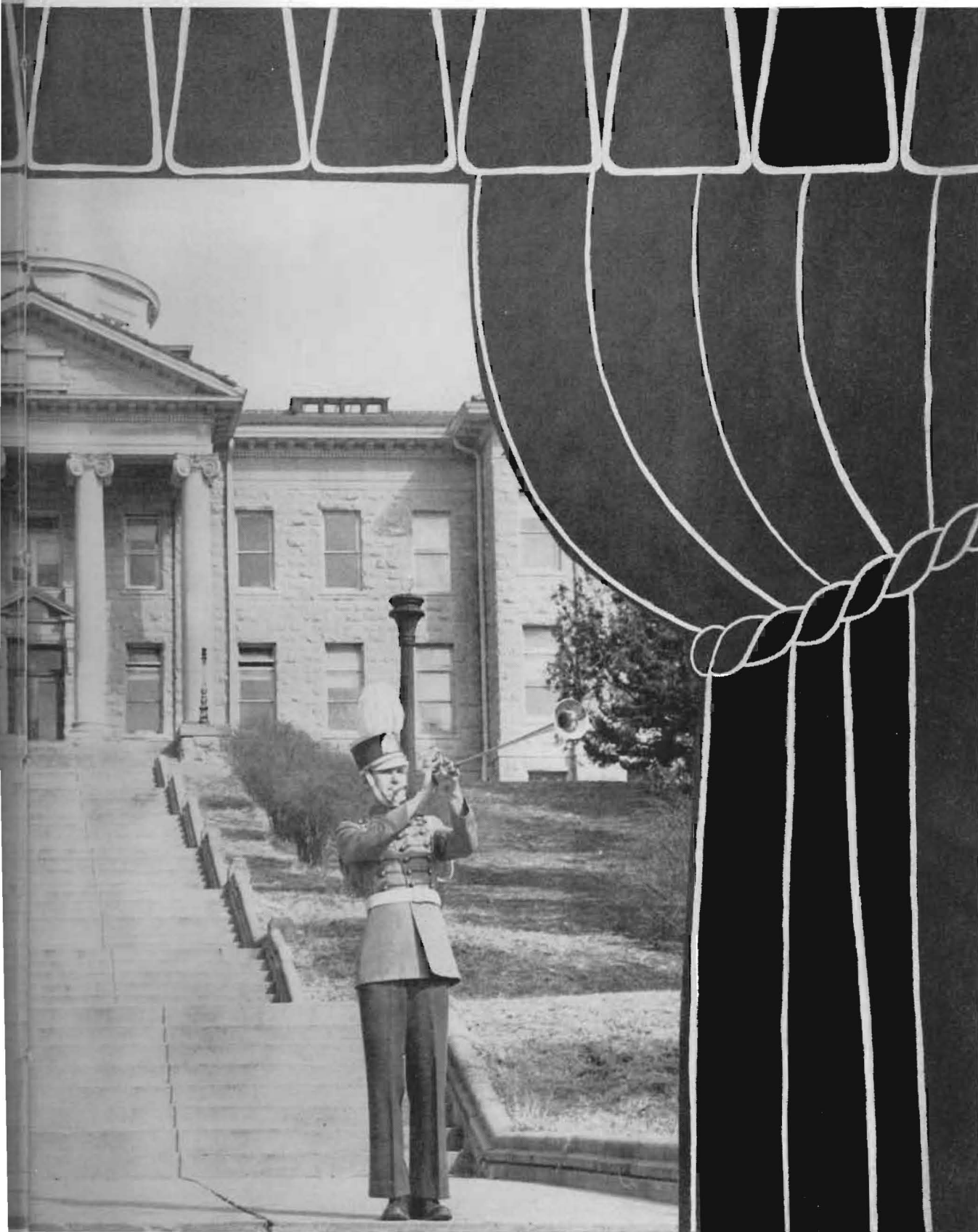
EVA ROSECRANS

Matron-Smith Hall





CURTAIN TIM



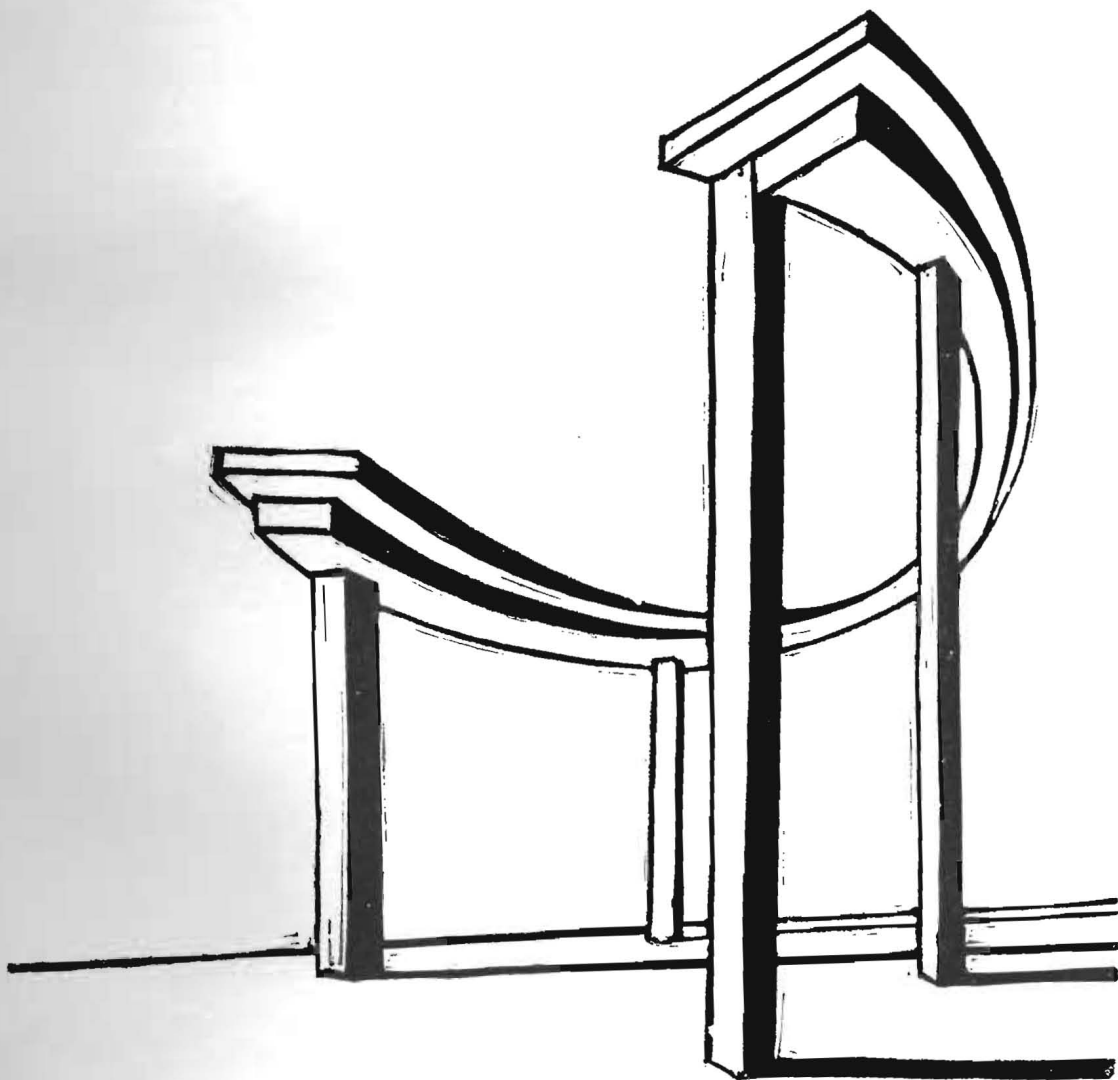
TIME

Man, being essentially active, must find in activity his joy, as well as his beauty and glory; and labor, like everything else that is good, is its own reward.

—Whipple

ACT I

ACTIVITIES





Vernie Langhofer, Charles Stansifer, Robert Raynes, Daniel Kahler, Helen Dewell, Melvin Maeshiro, Randy Moman, Barbara Stuber, Donald Wade, Donald Pabitzsky, Beverly Byers and Gene Adair
in a scene from "Thunder Rock."

CAMPUS PLAYERS

Beverly Williams, Helen Dewell, Ilene Watson, Patricia Wheeler, DeLores Johnson, Donald Pabitzky, Gordon Napier, Rosemarie Grow, Gene Adair, Vernie Langhofer, Donald Warren, Richard Jones, Robert Jones, Barbara Stuber, Miriam Wade, Norma Hunsinger, Helen Brooner and Patricia Meeker
in "Daughters of Atreus."





Barbara Stuber, Daniel Kahler, Dorine Tuckwood, Helen Dewell, Donald Pabitzky, Miss Helen Graham.

Campus Players is an honorary dramatic organization which traditionally presents three plays during each school year. These include the Homecoming play; "Eagerheart," the Christmas morality; and the Commencement play. The group is under the direction of Miss Helen Graham.

The 1948 Homecoming play was "Thunder

Rock," a three-act mystic drama; and the 1949 Commencement play was "Claudia," a three-act comedy-drama.

Full membership in Campus Players includes Daniel Kahler, president; Helen Dewell, business manager; and Barbara Stuber, Donald Wade, and Donald Pabitzky. Dorine Tuckwood is a probationary member.

The sixteenth annual production of "Eagerheart" was staged during the chapel period on December 15. Barbara Stuber played the title role, and Eagerfame and Eagersense were portrayed by Helen Dewell and Dorine Tuckwood, respectively. Charles Stansifer and Dona Kovach were the Holy Family, Joseph and Mary.

Randy Moman, Charles Stansifer, Dona Kovach, Barbara Stuber, DeWane Zimmerman, Edwin Harvey.



COLLEGIAN

The Southwestern Collegian, the student newspaper, is published monthly by students in the journalism department.

For thirteen consecutive semesters the paper has been awarded an "All-American" rating by the Associated Collegiate Press, and in 1946

won the coveted "Pacemaker" award, which is no longer given to any paper.

The 1948-1949 staff included Opal McDaniel, editor; William Scott, assistant editor; Robert W. Hill, advertising manager; and Earl W. Shaffer, adviser.

*Upper—Robert W. Hill, Opal McDaniel, Earl W. Shaffer.
Lower—Joan Fennema, Robert Lloyd, Kenneth Cole, Elma Dannenfelser, Kenneth Roberts, Thelma Unruh, William Scott, Earl W. Shaffer, Opal McDaniel, Dean Helmick.*





Stanley Abel, Earl W. Shaffer, William Scott, Sherman Edmondson, George Weber, Ruth Ellen Craig, Elma Dannenfelser, Robert Lloyd, Joan Fennema.

MOUNDBUILDER

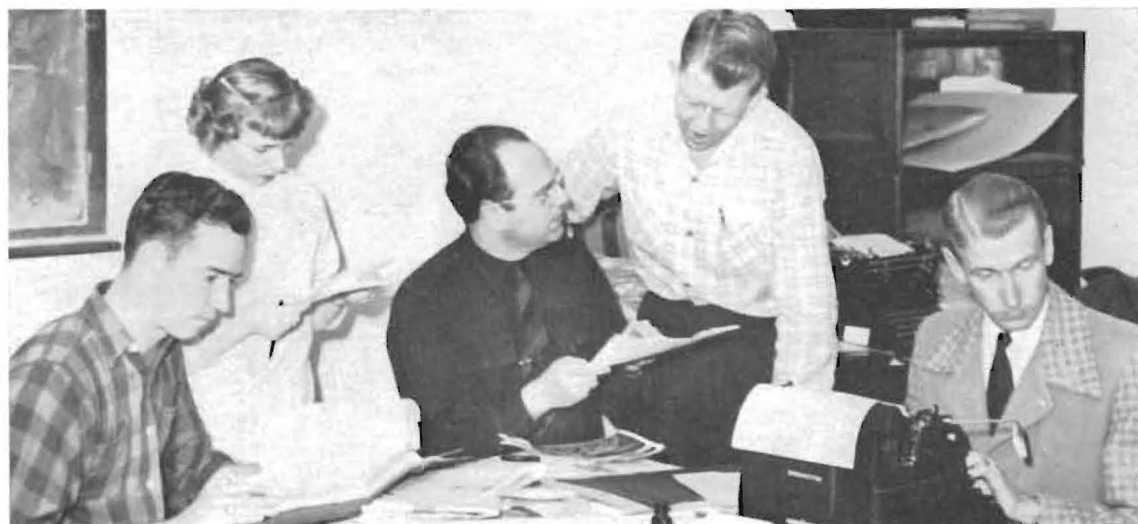
The 1949 Moundbuilder was produced entirely by members of the journalism department under the direction of Earl W. Shaffer, adviser.

It is hoped by the staff members that this picture book will serve through the years as a record of the 1948-1949 school year spent at Southwestern College.

Staff members for this publication included

Robert Lloyd, editor; Joan Fennema, assistant editor; Stanley Abel, business manager; George Weber, photographer; Elma Dannenfelser, photography editor; William Shannon Scott, sports editor; and William Koons, art editor. Others who helped with the work were Dona Kovach, Ruth Ellen Craig, Sherman Edmondson, and Ann Faust.

Robert Lloyd, Elma Dannenfelser, Earl W. Shaffer, George Weber, Stanley Abel.



PI KAPPA DELTA



Back Row—Dr. Eleanor Hoag, Carl Collier, Murrel K. Snyder, Paul W. Healy, George Craig, Robert M. Jones, Kenneth Thomas, William Nealy.

Front Row—Helen Dewell, William Brooks, Leo Whalen, Donald Wade, John D. Hansen, Charles Morris.

Pi Kappa Delta is a national honorary speech fraternity. Southwestern's organization is known as the Delta Chapter. The purpose of the fraternity is to promote inter-collegiate competition in forensic activities. Some of the functions which the organization sponsors are inter-collegiate debate, oratory, extemporaneous speaking and group discussion. One of the highlights of

the year's activity was a trip to Peoria, Illinois, where the group participated in the National Collegiate Debate Tournament. Officers were Kenneth Thomas, president; Carl Collier, vice-president; William Brooks, secretary and treasurer; Robert M. Jones, corresponding secretary. Members of the organization not pictured are Norman Nelson and Dr. Virgil C. Welch.

RADIO

Southwestern College now broadcasts two fifteen minute weekday programs and one half hour Sunday program each week. Through the facilities of station KSOK the control room is equipped to broadcast by remote control from the Music Hall studio, Richardson Hall auditorium, the new Sonner Stadium, and the

Stewart Field House. The new studio is fully equipped and up-to-date. Programs during the year consisted of short plays, news and sports casts, interviews, addresses, and various types of musical presentations. Programs are arranged by a committee of faculty members.



Upper—Daniel Kahler, Barbara Stuber, Dorine Tuckwood, Ralph Farris, Celestine Houston, and Jack Crawford, radio students, present one of the many week-day broadcasts.

Lower Ralph Smith and Kenneth Cole handle the controls as Southwestern College goes on the air over radio station KSOK.

PI GAMMA MU



Back Row—C. I. Vinsonhaler, William Monypeny, Mearl P. Culver, Leonard Elliott, W. N. Grandy, Murrel K. Snyder, Blaine Nolan, Arthur S. Y. Chen.
Front Row—Eleanor Hoag, Lillian Cloud, Helen Evers, Dorothy King, Dolores Dieterich, Gladys Mizuno.

Southwestern College is the birthplace of Pi Gamma Mu. Dr. Leroy Allen founded this National Social Science Honor Society in 1924 and it now has over 125 chapters.

Membership of the Kansas Alpha Chapter is composed of upperclass students and faculty members in the field of social science. The members are chosen on a basis of scholarship.

ENGLISH CLUB



Back Row—Layiwola Adedeji, James Oldfield, Robert Lloyd, Earl W. Shaffer.
Middle Row—Virgil Hutton, Winona Bledsoe, Jean Throckmorton, Dr. Eleanor Hoag, Joan Fennema.
Front Row—Wilma Rife, Corlie Sanders, Betty McGowan, Norma Strobel, Gladys Morton.

The purpose of the English Club is to provide, for those interested in English, a social and informal atmosphere in which to express

mutual interests. Officers were: Gladys Morton, president; Opal McDaniel, secretary; Winona Bledsoe, program chairman.

CRIMSON QUILL



Back Row—George Weber, William Scott, Opal McDaniel, Earl W. Shaffer, Elma Dannenfelser, Robert Lloyd, James Crawford.
Front Row—Norma Strobel, Kenneth Roberts, Joan Fennema, Ralph Smith, Thelma Unruh.

Crimson Quill, a new organization this year, was formed to promote a greater interest in journalism at Southwestern.

Officers were Bill Scott, president; Bob Lloyd, vice-president; Opal McDaniel, secretary; Elma Dannenfelser, treasurer; and Earl W. Shaffer, sponsor.

SOCIOLOGY CLUB



Back Row—Arthur Maxson, Charles Stansifer, Ralph Jones, Kenneth Roberts. *Third Row*—Layiwola Adedeji, Harold Soong, Joan McNair, Mary Rethorst. *Second Row*—Irene Kuehn, Ethel Gillig, Doris Sanbei, Arlene Steffen, Lois Dryden. *Front Row*—Felix Lauter, Arthur S. Y. Chen, Mary Jean Telfer, LaDelle Vagner, Elverta Julian. *Standing*—Richard Conover.



Back Row—Vernie Langhofer, Melvin Conrad, William McFall, Ravera Rolf, Thelma Unruh, Marilee Sundbye, Edwin Harvey, John Adams, George Paris.

Front Row—Nina Hutchison, Avenell Reazin, Ethel Gillig, Ruth Anne Holmes, Ramona Hauser.

WESLEY FELLOWSHIP

Highlights of the year's activities for the Wesley Fellowship organization included a presentation of the play "High Hurdles," a Thanksgiving communion service and distribution of baskets, a drive for the "China project," New Year's dedication, a book review by Mrs. Dewey, and talks by Reverend Edwards, Mr. Williams, and Reverend Burns. In the spring the group held its annual Symbolic Supper.

During Holy Week a religious play, "Thirty Pieces of Silver," was sponsored. Officers were Ethel Gillig, president; Marilee Sundbye, vice-president; Ravera Rolf, secretary; John Adams, treasurer; Thelma Unruh, program chairman. Others who served as program chairmen were Vernie Langhofer, Nina Hutchison, William McFall, Edwin Harvey, Avenell Reazin, and Ruth Anne Holmes.

Each student at Southwestern College is encouraged to lead a life which is spiritually well rounded by the provision of good Christian environment on every hand.

Chapel services are held each Wednesday morning in the Richardson Hall auditorium for the benefit of all students and faculty.

The community of Winfield offers excellent opportunities for worship for members of many faiths and denominations. The city has a total of twenty-one churches. Southwestern College places great emphasis upon religion.

The stained glass window in Grace Church is a well-known landmark to many who attend Southwestern College.



PRE-MINISTERIAL



Back Row—Ralph Jones, William McFall, Walter Racker, Melvin Conrad, J. T. Posey, Albert Rymph, Jack Crawford, Norman Brust. *Third Row*—Richard Stowers, James Starkey, Bob Jones-Williams, Donald Sondel, Dennis Lindsay, Charles Hayes, Quenton Prather, Dean Ramsay. *Second Row* William Brooks, Donald Wade, Edwin Harvey, Donald Vangieson, Clyde Carpenter, Raymond Worden, Wayne Carr. *Front Row*—W. N. Grandy, Rex Kelley, Albert Kolbe, George Weber, George Whipple.

The P.M. Club was organized last fall by students who are preparing for the ministry. Highlights of their calendar year included election of officers in the home of Dr. Whipple, a picnic at Timber Creek and a trip to Rock. Special speakers at meetings during the year

were Dr. Raymond Dewey, Dr. I. D. Harris, and Father Glenn. Officers for the Pre-ministerial group were William Brooks, president; Quenton Prather, vice-president; Melvin Conrad, secretary-treasurer; Raymond Worden, sergeant-at-arms.



Ruth Anne Holmes, Donald Adams, Lois McNeil, Verlin Hoberecht, Marilyn Daly, Ramona Hauser, Norman Brust, Nolin Masih, Nila McIrvin, Ethel Gillig, and Clyde Morton participate in a social function at the Grace Methodist Church.



Back Row—Donald Adams, Ruth Anne Holmes. *Third Row*—Murrel K. Snyder, Alice Miller, Irene Kuehn, Dr. Eleanor Hoag. *Second Row*—Clyde Morton, Nina Hutchison, Mary Rethorst, Judy Black. *Front Row*—William Brooks, W. N. Grandy, Leonard Elliott. *At Table*—Clarence Rethorst, Gladys Mizuno.

STUDENT CHRISTIAN ASSOCIATION

This year's events include the annual "sing" on the "77," the freshmen women's hike and men's stag, the Big and Little Sister tea, operation of the "used book" store, operating concession stands at games, and selling "Y" membership cards. The organization sponsored a Christmas party for children, a film, "Life in a Modern Tavern," and the WSSF Drive. A representative from Chilocco Indian School spoke to the group, and work was done on the

S.C.A. chapel in Richardson hall. Officers were Gladys Mizuno, chairman; Clarence Rethorst, co-chairman; William Brooks, program chairman; Judy Black, secretary; George Weber, treasurer; Norman Nelson, social chairman; Dorothy Ross, Estes committee chairman; Nina Hutchison, commission co-ordinator. Faculty advisers were Dr. Hoag, Mr. Snyder and Mr. Grandy.

The S.C.A. sponsored an auction this year for the benefit of the World Student Service fund. Some of the items sold were a week's use of a summer cabin in Colorado by E. W. McNeil, a Chinese chicken dinner by Dr. Chen, a spaghetti and meatball dinner by Mr. Grandy, an evening in Wichita by Dr. Nolan and other things of equal interest.

George Weber and Ramona Hauser are being served meatballs by Mr. Grandy at his home on College Street.



STUDENT COUNCIL



Back Row—Murrel K. Snyder, Mrs. Mildred Skinner, William Monypeny. *Fourth Row*—DeWane Zimmerman, Donald Sondel, Lois McNeil, Edwin Harvey, Bette Popp. *Third Row*—Edward Boyd, Doris Sanbei, William Brooks, Ward Akers, Louis Kovach. *Second Row*—Dwight Cook, Donald Wade, James McPeck, Leonard Richardson, Marvin Webster, Dorothy Kirkwood. *Front Row*—Stanley Abel, Mary Jean Telfer, Ralph Jones, Grayce Abrahamson, Avenell Reazin. *Standing* Herbert White.

Self government is made possible for the student body through the Student Council, a group composed of four regular members and two alternates from each of the four classes. The council is divided into standing committees for social, student union, assembly, finance and activities.

The student council was in charge of all Homecoming events this year, some of which

were the queen coronation and the house decorations contest. First semester officers: Gene Adair, president; Herbert White, vice-president; Ward Akers, secretary. Second semester: Herbert White, president; Hal Wilcox, vice-president; Doris Sanbei, secretary.

Herbert White and Gene Adair served as presidents of the student body for the 1948-1949 school year.

Some of the activities which the council sponsored during the year were the council breakfast, election of class officers, purchase of the Order of the Mound keys, awards for scholarship, conference with the Administration Committee to approve allocations of the student activity fee, assemblies, committee to help in the selection of persons for Who's Who, election of May Queen and Master of Ceremonies, sponsoring of the election of student officers, selection of the spring holiday, election of Masterbuilders and helping with the reception for high school seniors.



WHO'S WHO



*Back Row—Hal Wilcox, Lowell Gish, William Burnett, Eugene Adair.
Front Row—Corlie Sanders, Stewart Boone, Ellen Oda.*

Each year students from the senior class who are outstanding in scholarship, participation in extra-curricular activities, and who possess potentialities for future usefulness and success are

selected to receive recognition in the publication, "Who's Who Among Students in American Universities and Colleges."

MASTERBUILDERS

Loyalty, service, and contribution are the factors which determine the selection of Masterbuilders. Each year Masterbuilders are elected by the popular vote of the student body. The group is composed of graduating seniors. This year six students were chosen for the honor. They were Grayce Abrahamson, Stanley Abel, William Burnett, Ellen Oda, Wilma Rife, and Hal Wilcox.



*Back Row—Hal Wilcox, William Burnett, Stanley Abel.
Front Row—Ellen Oda, Wilma Rife, Grayce Abrahamson.*



*Back Row—Ward Akers, Mary Rethorst, Shirley Hammond, Elaine Baird, Gladys Mizuno, Lloyd Coon.
Front Row—Velma King, Marilee Sundbye, Barbara Nease, Janet Yoder.*

SCHOLARSHIPS

Eligibility for a Moundbuilder scholarship depends upon scholarship, loyalty and service. National Board of Education of Methodist Churches scholarships are granted on the basis of scholastics and participation in school activities.

Those receiving the national Methodist scholarships for the school year of 1948-1949 were Janet Yoder, Marilee Sundbye, Gladys Mizuno, Barbara Nease, Shirley Hammond, and Mary Rethorst. Those receiving Moundbuilder scholarships were Elaine Baird, Ward Akers, Lowell Gish, Wilma Rife, and Lloyd Coon.

ORDER OF THE MOUND

The Order of the Mound, a general scholarship society, was organized in 1917 to promote and recognize good scholarship. Election is made each spring on the basis of all the grades for four years. Names are announced at the Honors Assembly when those selected are given the Order of the Mound key by the Student Council and are invested with the purple ribbon which is worn over the academic gown during the commencement season. A grade point average of B must have been maintained over the four years' work; student work must be in the upper ten or twelve per cent of the class; two

of the four years must have been resident work at Southwestern in order for a student to be eligible. Students elected to the Order of the Mound this year will be recognized in the 1950 "Moundbuilder." Those receiving this honor last year were Ruth Murray Brown, Hutchinson; Ray Collins, New York City; Mary Marie Glaser, Tulsa; William Hutton, Winfield; Tedd Kawata, Chicago; Earl Reinbolt, Winfield; William Stanley, Cunningham; Rosemary Tempelin, Winfield, and Virginia Murray Welch, Winfield.

SIGMA PI PHI



Back Row—Doris Sanbei, Nila McIrvin, Norma Strobel, Mary McCurry, Constance Green, Oreta Newby.
Fourth Row—Charlotte Mossman, Janet Yoder, Mary Kay Kurtz, Charleen Kanaga, Lois McNeil, Beverly Byers.
Third Row—Gussie June Mayo, Rosalie Thompson, Betty Belden, Barbara Tanji, Gladys Mizuno, Ruth Ellen Craig.
Second Row—Wanda Miller, Mona Bradbury, Marilyn Johnson, Nina Hutchison, Mary Rethorst, Elma Dannenfelser.
First Row—Patricia Knowles, Winona Bledsoe, Ann Katherine Mann, Esther Sheldon, Corlie Sanders, Virginia Ward.
Standing—Barbara Brown.

MEMBERS

Betty Belden
 Winona Bledsoe
 Mona Bradbury
 Barbara Brown
 Kathryn Barnett
 Beverly Byers
 Margaret Cavin
 Ruth Ellen Craig
 Elma Dannenfelser
 Dolores Dieterich
 Jean Fulton
 Patricia Grandy

Phyllis Henry
 Nina Hutchison
 Charleen Kanaga
 Patricia Knowles
 Mary Kay Kurtz
 June Mayo
 Ann Katherine Mann
 Mary McCurry
 Nila McIrvin
 Gladys Mizuno
 Lois McNeil
 Wanda Miller

Joyce Newman
 Oreta Newby
 Mercedes Palmer
 Nita Pike
 Mary Rethorst
 Corlie Sanders
 Ethel Sato
 Esther Sheldon
 Barbara Tanji
 Rosalie Thompson
 Marilyn Williams
 Janet Yoder

Sigma Pi Phi is the larger of the two women's literary societies on the Southwestern campus.

Those elected for senior honors were Corlie Sanders, Gladys Mizuno, and Barbara Brown.

First semester president was Corlie Sanders

and Barbara Brown was vice-president. Second semester president was Barbara Brown and Ruth Ellen Craig was vice-president. The sponsor of the organization is Paul W. Healy.

DELPHI

Delphi is the larger of the two men's literary societies on the Southwestern campus and a brother organization of Sigma Phi Pi.

Those elected for senior honors were James Howell and Leland Harrold.

Officers for the first semester were James

Howell, president; Leonard Elliott, vice-president; John Green, secretary, and Donald Adams, treasurer. Second semester officers were Leland Harrold, president; Dean Ramsay, secretary, and Donald Adams, treasurer. Paul W. Healy is sponsor of Delphi.

MEMBERS

Stanley Abel
Donald Adams
Loren Alexander
Ward Akers
Wayne Baker
Murlyn Conover
Earl Cowen
Doyle Cummings
Leonard Elliott
Richard Fry

John Green
Leland Harrold
Edwin Harvey
Gordon Holm
James Howell
Dale Kubik
Deane Lee
Dennis Lindsay
Melvin Maeshiro
Kay Melia
Dean Ramsay

Edward Reynolds
James Roby
Laverne Seglem
Wendell Sheets
Donald Sondel
Willis Stamm
Thomas Tanaka
Jimmie Wene
Donald White
DeWane Zimmerman

Back Row—James Roby, Jimmie Wene, Dennis Lindsay, Dean Ramsay. *Fourth Row*—Gordon Holm, Doyle Cummings, Melvin Maeshiro, Laverne Seglem, Wendell Sheets. *Third Row*—John Green, Thomas Tanaka, DeWane Zimmerman, Donald Sondel, Earl Cowen. *Second Row*—Richard Fry, Edward Reynolds, Donald White, Deane Lee, Kay Melia. *Front Row*—Leonard Elliott, Stanley Abel, Wayne Baker, Edwin Harvey, James Howell, Paul W. Healy. *Standing*—Leland Harrold.



BELLES LETTRES

Belles Lettres was organized in 1890 by a group of college women, and in the fall of the same year, they joined with the Athenians to become brother and sister societies.

First semester officers were Dona Kovach, president; Mona Lee Barnes, vice-president;

Judy Black, treasurer, and Arlene Steffen, secretary. Officers for second semester were Betty Wynn, president; Ravera Rolf, vice-president; Irene Snyder, secretary, and Georgia Mason, treasurer.

MEMBERS

Frances Adams
Julia Black
Marion Choi
Marilyn Daly
Helen Dewell
Lois Dryden
Beverly Dunshee
Doris Falen
Joan Fennema
Jean Frazier
Ethel Gillig
Lou Ann Gimple
Corrine Gwin

Verda Hanes
Carol Hunt
Thelma King
Louis Kovach
Irene Kuehn
Lee Anna Mast
Opal McDaniel
Betty McGowan
Betty De McVey
Geraldine Miskimen
Mary Mohnney
Joann Ogle

Ann Parks
Avenell Reazin
Phyllis Roderick
Ravera Rolf
Irene Snyder
Beth Ann Sullivan
Ruth Sullivan
Barbara Terry
Rosalie Thompson
Ethel Tokuda
Miriam Wade
Margaret Warwick
Betty Wynn

Back Row—Beth Ann Sullivan, Barbara Terry, Betty De McVey. *Third Row*—Lou Ann Gimple, Verda Hanes, Carol Hunt, Betty McGowan. *Second Row*—Ethel Gillig, Irene Kuehn, Joan Fennema, Georgia Mason, Irene Snyder, Helen Dewell. *Front Row*—Judy Black, Mary Mohnney, Marilyn Daly, Ravera Rolf, Dona Kovach. *Standing*—Betty Wynn.



ATHENS



Back Row—Leonard Richardson, John Wynn, James Cate. *Third Row*—William Rosecrans, Bob Jones Williams, Howard Servis. *Second Row*—Harold Tretbar, Kenneth Bickford, Sharon Wells. *Front Row*—Richard Jones, Wayne Carr, Wilbur Cooper, Mario Cuellar, Rodney Gish. *Standing*—Frank Longley.

MEMBERS

Kenneth Bickford	Leonard Richardson
Wayne Carr	William Rosecrans
James Cate	Howard Servis
Wilbur Cooper	Harold Tretbar
Mario Cuellar	George Weber
Rodney Gish	Sharon Wells
Richard Jones	Bob Jones Williams
Frank Longley	John Wynn

The Athenian literary society is the oldest society in Southwestern College. It was founded four years later than the college.

First semester officers were Richard Jones, president; William McFall, vice-president; Norman Nelson, secretary, and Leonard Richardson,

treasurer. Officers for second semester were Frank Longley, president; Wilbur Cooper, vice-president; Rodney Gish, secretary-treasurer, and Johnny Wynn and Wayne Carr, program chairmen.

KAPPA PI



Standing—James Renner, Bonnie Jandreau, John Henderson, John Wynn. *Back Row*—Mrs. Covacevich, Mr. Smith, Mrs. Smith, Elizabeth Thomas, Alice Robb. *Middle Row*—George Paris, Ann Faust, Mario Cuellar, Robert Lloyd, William Koons. *Front Row*—Ruth Boyd, Ann Katherine Mann, Vernie Langhofer, Violet Beatty.

A highlight of the calendar year for Kappa Pi, national honorary art fraternity, was the Kappa Pi-Alfa Mu formal dance held in the new Student Union in March with decorations

carrying out a "Davey Jones's Locker" theme.

Guiding the club for 1949 were James Renner, president; William Koons, vice-president, and John Wynn, secretary-treasurer.

Back Row—William McFall, Harold Tretbar, Dennis Lindsay, Norman Nelson, Leonard Elliot, David McCampbell. *Front Row*—George Weber, Howard Servis, Ravera Rolf, Linton Smith, Dr. Carl S. Bell.



PHOTO FLOPS

Formed for the purpose of seeking advancement in the field of photography, Photo Flops, newly-organized last fall, has a large membership for a first-year club.

Photo Flops sponsored the winning candidate for 1949 Moundbuilder Queen, Ravera Rolf.

Officers included: George Weber, president; Linton Smith, vice-president; Howard Servis, secretary-treasurer; Harold Tretbar, dark-room engineer, and Dr. George C. Whipple, adviser.

PI SIGMA GAMMA

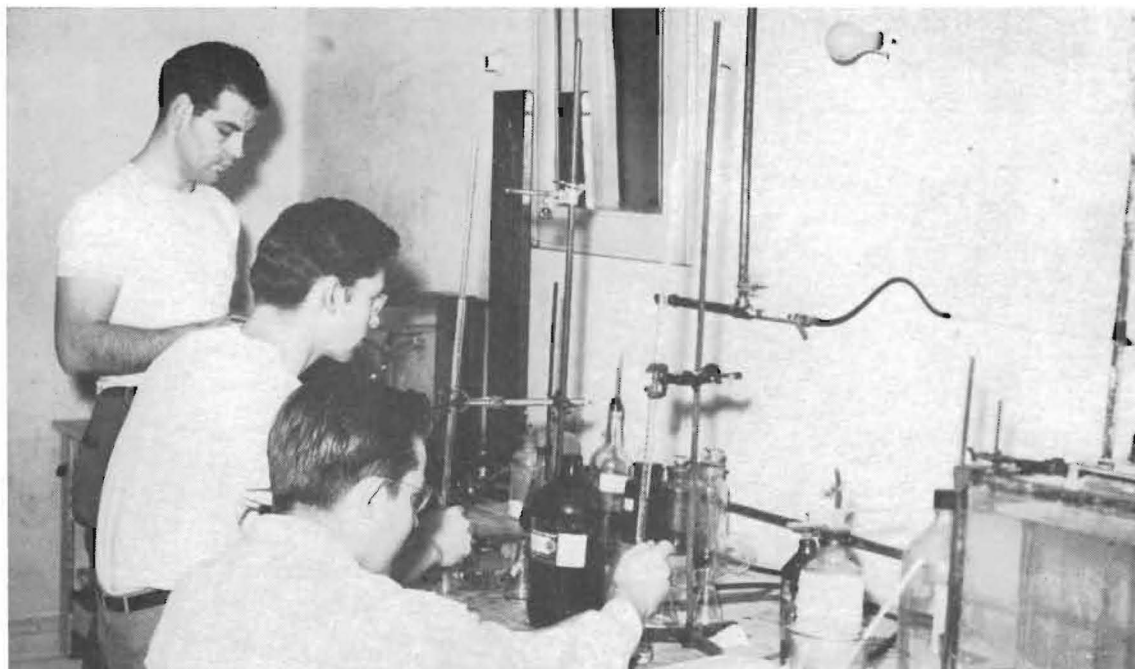


Back Row—Leroy Spitzer, Asher Kantz. *Third Row*—Louis Kovach, Charles Pumpelly, William Snively, Robert Yeager, Arlyn Young. *Second Row*—John Ramsdale, James Fry, David McCampbell, Leonard Sence, Willis Stamm. *Front Row*—Ruth Mead, Shirley Hammond, James Tiner, Leland Harrold, Dwight Cook.

Meetings of Pi Sigma Gamma, more commonly known as the Science Club, were held weekly during the year. Each week some student, faculty member, or person outside the college presented a paper or lecture relating to some phase of science. The organization is composed of students and faculty members who are interested in any phase of science or any sci-

entific project. Eligibility for membership is determined by the interest shown by an individual for science. First semester officers were John Ramsdale, president; Max Stout, vice-president; Dorothy Bronnenkant, secretary-treasurer. Second semester officers were James Fry, president; Dwight Cook, vice-president; James Tiner, secretary-treasurer.

William Snively, Philip Stansifer and John Ramsdale are hard at work in the physics laboratory.





Back Row—Lorraine Chapman, Ruth Anne Holmes, Dorothy Kirkwood, Ravera Rolf, Alice Miller.
Front Row—Miss Evers, Barbara Tanji, Avenell Reazin, Grayce Abrahamson, Mrs. Skinner.

KAPPA OMICRON PHI

Kappa Omicron Phi is a national home economics fraternity. The Mu chapter has been active on the campus since 1929. Officers were Avenell Reazin, president; Grayce Abrahamson, vice-president; Lorraine Chapman, secretary; Alice Miller, treasurer; Dorothy Kirkwood, guard and reporter.

Gamma Omicron Phi is a local home economics organization open to any girl who has completed eight or more hours in home economics. Officers for the year were Alice Miller, president; Dorothy Kirkwood, vice-president; Blynn Conway, secretary; Lorraine Chapman, treasurer. Miss Evers sponsors both groups.

GAMMA OMICRON PHI

Back Row—Phyllis Stuber, Lorraine Chapman, Fannie Cummings, Ruth Anne Holmes, Avenell Reazin, Margaret Warwick, Dorothy Kirkwood, Ravera Rolf, Grayce Abrahamson. *Front Row*—Blynn Conway, Mrs. Skinner, Miss Evers, Alice Miller, Barbara Tanji, Leona Larkin.





Back Row—Sheldon, Joann Ramsdale, Jones, Langhofer, John Ramsdale, C. Ramsdale, Moman, Faust, Sondel, Wright, Ramsay, McNeil, Rolf, Hainline. *Third Row*—Baker, Williams, Boyd, Servis, Paris, Melia, Mr. Smith, Cummings, Cook, White, Brown, R. Taylor, Yoder, Daly, Mossman. *Second Row*—Hunt, Eckl, D. Taylor, Ward, Kirkwood, Hutchison, Warren, Elliott, Wilcox, Vangieson, Means, Fulton, Craig, Ogle. *Front Row*—Heminger, Johnson, Popp, Nease, Abrahamson, Gimple, Cowen, Stansifer, Mettling, Wynn, King, Kanaga, Jacobs, McGowan.

A CAPPELLA CHOIR

MEMBERS

Grayce Abrahamson
Vesta Faye Baker
Jim Basore
Judy Black
Alice Boyd
William Brooks
Barbara Brown
Dwight Cook
Earl Cowan
Ruth Ellen Craig
Doyle Cummings
Marilyn Daly
Betty Lou Eckl
Leonard Elliott
Donald Faust
Jean Fulton
Lou Ann Gimple
Moselle Hainline
Nola Heminger
Marjorie Hunt
Nina Hutchison

Bonnie Jacobs
JoAnn Johnson
Ralph Jones
Charleen Kanaga
Velma King
Dorothy Kirkwood
Patricia Knowles
Vernie Langhofer
Betty McGowan
Lois McNeil
Lois Means
Kay Melia
Gordon Mettling
Randy Moman
Charlotte Mossman
Barbara Nease
Ellen Oda
Joann Ogle
Donald Pabitzky
George Paris
Bette Popp

Dean Ramsay
Charles Ramsdale
Joann Ramsdale
John Ramsdale
Ravera Rolf
Howard Servis
Esther Sheldon
Donald Sondel
Charles Stansifer
Dicksie Taylor
Rowena Taylor
Donald Vangieson
Virginia Ward
Donald Warren
Herbert White
Hal Wilcox
Marilyn Williams
Willard Wright
Betty Wynn
Janet Yoder
Orcenith Smith, *Director*

Southwestern's 62-voice A Cappella Choir completed another successful spring tour this year which featured 24 appearances. The group was organized in 1925 and began its tours the following spring.

Don Faust served as president, and Betty Lou Eckl and Dwight Cook were elected vice-presidents. Charlotte Mossman was secretary.



String Ensemble

Virginia Nickels
Lois McNeil
JoAnn Johnson
Charlotte Mossman
John Thomas
Janet Yoder



Boys' Quartet

Ralph Jones
Paul Hendershott
Doyle Cummings
Dean Ramsay
Wayne Baker



Mixed Quartet

Hal Wilcox
Betty Lou Eckl
Velma King
Doyle Cummings
Virginia Ward



Madrigalians

James Roby
Donald Vangieson
Bette Popp
Nola Heminger
Marilyn Daly
Bonnie Jacobs
Wayne Baker
P. Fredrick Hall



Girls' Double Trio

Esther Sheldon
JoAnn Johnson
Marjorie Hunt
Marilyn Daly
Betty Wynn
Lois McNeil
Moselle Hainline



Standing—Vesta Faye Baker, Mr. Williams, Virginia Ward, Patricia Grandy. *Seated*—Earl Cowen, Lloyd Miller, Willard Wright, Barbara Brown, Joann Ramsdale, Virginia Nickels, Eston Beery, Lois McNeil, Phyllis Henry, JoAnn Johnson, Barbara Nease, Robert Kuhlman, John Thomas, George Paris, Janet Yoder, Ralph Smith, Betty McGowan, Ward Akers, Charlotte Mossman, Thomas Ward, Mary Kay Kurtz.

LITTLE SYMPHONY

Percussion

Vesta Faye Baker

Bass Viol

Virginia Ward
Patricia Grandy

Violin

Virginia Nickels
Lois McNeil
Earl Cowen
Willard Wright
Janet Yoder
John Thomas

Alto Saxophone

Lloyd Miller

Bassoon

Barbara Brown

Clarinet

Joann Ramsdale
Eston Beery

Flute

Barbara Nease
Phyllis Henry

Oboe

Robert Kuhlman

Horn

George Paris
Ralph Smith

Cello

Betty McGowan
Charlotte Mossman

Cornet

Ward Akers
Thomas Ward

Trombone

Mary Kay Kurtz

Director — Ross O. Williams

BAND

Flute

Margaret Cavin
Nola Heminger

Clarinet

Joann Ramsdale
Eston Beery
Marilyn Williams
Norma Strobel
Patricia Day
Gordon Holm
Donald White

Oboe

Robert Kuhlman
Elma Dannenfelser

Alto Saxophone

Lloyd Miller
Violet Beatty
Bonnie Jandreau

Tenor Saxophone

Betty Wynn
Betty De McVey

Percussion

Vesta Faye Baker
Lois Means
Kathryn Barnett
Mandell Butterfield
Floyd Pettit

Bell Lyre

Charlotte Mossman

Bassoon

Barbara Brown

Cornet

Stewart Boone
Thomas Ward
Ward Akers
Dale Kubik
Eugene Laycock
Loren Alexander

Horn

Joyce Boone
Kay Melia
George Paris
Ralph Smith

Trombone

Grace Brooks
Mary Kay Kurtz
Myrna Thole

Baritone

Eddie Kiley
James Pake
Ross Graham
Wayne Ross

Bass

Melvin Maeshiro
William Brooks
Rodney Gish

Baton Twirlers

Charleen Kanaga
Dorothy Higginbottom

Drum Majorette

Bette Popp

Director — Creston Klingman

Standing—Baker, Means, Barnett, Butterfield, Pettit, Mossman, Mr. Klingman, Popp, Kanaga. *Sitting, left to right*—Boone, Ward, Akers, Kubik, Williams, Day, Laycock, Holm, White, Alexander, Ramsdale, Beery, Paris, Maeshiro, Brown, Smith, Brooks, Dannenfelser, Melia, Gish, Kuhlman, Boone, Heminger, McVey, Cavin, Ross, Wynn, Graham, Jandreau, Beatty, Pake, Miller, Kiley, Thole, Kurtz, Brooks.



ALPHA MU



Back Row—Grace Sellers, Barbara Brown, Earl Cowen, Paul Hendershott, Donald Faust, Wayne Baker, Lois McNeil, Bonnie Jacobs, Ross O. Williams. *Middle Row*—Barbara Nease, Margaret Cavin, Marilyn Williams, Dicksie Taylor, Betty Wynn, Janet Yoder, Joann Ogle, Rowena Taylor, Charlotte Mossman. *Front Row*—Betty Lou Eckl, Vesta Faye Baker, Lila Mae Homes, Velma King, Virginia Ward, Moselle Hainline, Nola Heminger, Esther Sheldon.

Alpha Mu was organized at Southwestern College in 1942 with intentions of becoming affiliated with a national association.

Barbara Brown was president first semester and Betty Lou Eckl president second semester.

The Southwestern Organ Club was organized fourteen years ago by Mrs. Cora Conn-Redic, professor emeritus of Southwestern College.

Arnold Lynch is president and E. Marie Burdette, vice-president.

ORGAN CLUB



George Weber, Emmet Smith, Stanley Gould, Barbara Brown, Virginia Ward, W. Arnold Lynch, Patricia Knowles, Ravera Rolf, Gordon Holm, John Thomas.



Back Row—Ellen Oda, Ethel Sato, Nola Tang, Myrna Thole, Norma Strobel, Mary Foo, Velma King, Elma Dannenfeler. *Middle Row*—Ann Katherine Mann, Barbara Brown, Virginia Ward, Carol Hunt, Winona Bledsoe, Barbara Tanji, Leona Larkin. *Front Row*—Barbara Nease, Margaret Cavin, Patricia Day, Bette Popp, Rosalie Thompson, Beth Ann Sullivan, Patricia Taylor.

SMITH HALL

Smith Hall is the largest dormitory for girls on the Southwestern campus. There are forty-two girls in the hall.

First semester officers were Barbara Brown, president; Lila Holmes, vice-president; Doris Sanbei, secretary-treasurer. Second semester officers chosen were Mary Jean Telfer, presi-

dent; Gladys Morton, vice-president; Barbara Tanji, secretary-treasurer. Delegates at large were Dorothy Kirkwood for the first semester and Ellen Oda for the second semester. Miss Eva Rosecrans serves as housemother for Smith Hall.

Back Row—Gladys Morton, Marilyn Williams, Patricia Meeker, Gussie June Mayo, Beverly Byers, Marjorie Hunt, Mary McCurry. *Middle Row*—Doris Sanbei, Mary Jean Telfer, Patricia Knowles, Miss Rosecrans, Moselle Hainline, Dorothy Kirkwood, Geraldine Miskimen. *Front Row*—Alice Boyd, Lila Mae Holmes, Betty Lou Eckl, Esther Sheldon, Mary Alice Seyb, Ruth Ellen Craig, Oreta Newby.





Back Row—Nita Pike, Betty De McVey, Phyllis Roderick, Jean Frazier, Donna Nichols, Marilyn Daly.
Middle Row—Ramona Hauser, Joyce Marshall, Ann Parks, Jean Fulton, Ruth Sullivan, Ruth Boyd, Betty Belden.
Front Row—Opal McDaniel, Frances Adams, Nola Heminger, Georgia Mason.

HOLLAND HALL

Holland Hall as a dormitory for girls came into existence only two years ago. Last year an annex was added to the hall.

Officers for the first semester were Helen Dewell, president; Ruth Sullivan, vice-president; Mary Shaff, secretary-treasurer. Officers for the second semester were Mercedes Palmer, presi-

dent; Donna Nichols, vice-president; Irene Snyder, secretary-treasurer.

Activities for the year included the annual Valentine dance to which persons other than residents were invited, and a Christmas party, which was an inside affair.

Back Row—Lois Acre, Mary Shaff, Helen Dewell, Sue Laggren, Corrine Gwin.
Middle Row—Ethel Tokuda, Dicksie Taylor, Mercedes Palmer, Joan Regier, Joann Ogle.
Front Row—Kathryn Barnett, Marion Choi, Barbara Terry, Mrs. Cooper, Dorine Tuckwood, Marjorie Wright.



ALLISON HALL



Back Row—Verda Hanes, Bonnie Jandreau, Dorothy Ross, Miss Meadows, Thelma Unruh, Nila McIrvine.
Front Row—Joyce Moore, Lou Ann Gimple, Marilee Sundbye, Lena Beggs, Gladys Mizuno.

First semester officers were Gladys Mizuno, president; Marilee Sundbye, vice-president; Thelma Unruh, secretary-treasurer.

Second Semester officers were Thelma Unruh, president; Lena Beggs, vice-president; Marilee Sundbye, secretary-treasurer.

EAST HALL

Officers elected for the entire school year were Grayce Abrahamson, president, and Mary Rethorst, treasurer.

During the year the girls participated in the initiation of their freshmen members, a walk-out, and inside parties.

Back Row—Charleen Kanaga, Doris Falen, Avenell Reazin, Gracie Kawakami, Lois Dryden, Margaret Warwick, Mona Bradbury, Wanda Miller. *Middle Row*—Grayce Abrahamson, Mary Rethorst. *Front Row*—Nina Hutchison, Vesta Faye Baker, Mrs. Mabel Casburn, Freda Mae Rose, Fannie Cummings, Ravera Relf.





Back Row—James Roby, James Howell, John Brennan, William Eissing, George Hill, Norman Harris, Dean Ramsay, Donald White, Gordon Holm.
Front Row—Jimmie Hilliard, Wendell Sheets, DeWane Zimmerman, Floyd Pettit, Norman Nelson, Dale Kubik.

WESLEY HALL

Back Row—William Burnett, Dennis Lindsay, Harold Tretbar, Bruce Campbell, Leonard Richardson, Randy Moman, Jerry Wood, Leon Clapper, Robert Knowles, Layiwola Adedeji.
Middle Row—George Weber, David McCampbell, Robert Garnand, Charles Bailey, Murlyn Conover, Kay Melia, Edwin Harvey.
Front Row—Melvin Maeshiro, David Warren, Norman Brust, Howard Ishikawa, Donald Warren, Ronald Fukaya, Benjamin Uyesato.





Back Row—Stanley Abel, Deane Lee, Kenneth Bickford, Loren Alexander, Ross Graham, Earl Haggerty, Donald K. Lowry, James Oldfield, Wayne Ross.

Front Row—Paul Book, Leland Harrold, Willis Stamm, Francis Book, Wayne Baker, Richard Stowers.

WESLEY HALL

Back Row—Darrell Butterfield, Keith Sherman, Richard Fry, Herbert White, Laverne Seglem, Edwin Peck, Royce Orme.

Middle Row—Mandell Butterfield, William Chun-Hoon, Bahman Amini, Iraj Motazedji, William Pang, Harold Soong, Leonard Potter.

Front Row—Rodney Gish, Lloyd Feldman, Sharon Wells, Thomas Tanaka, Mario Canedo.



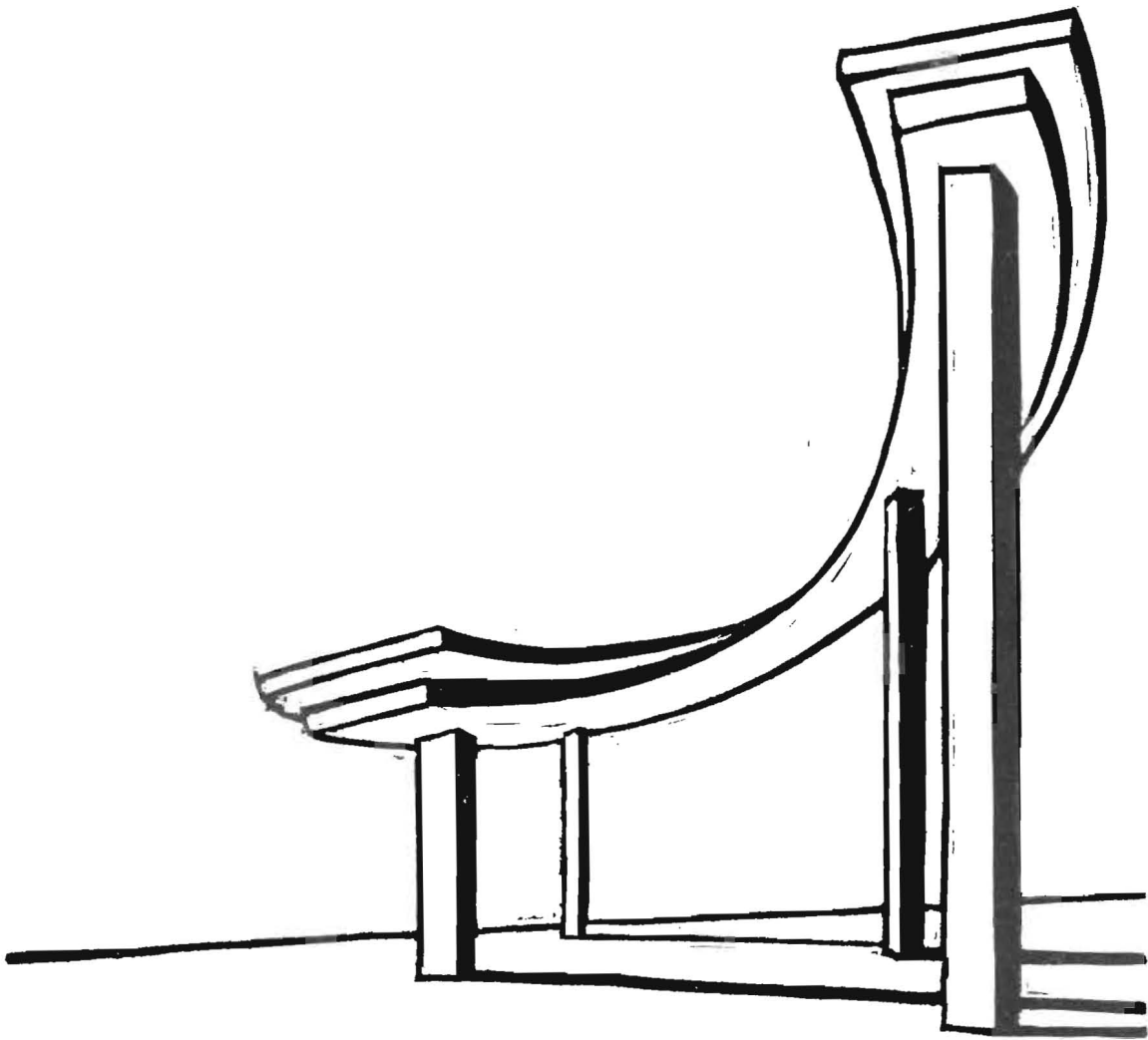
NEW STUDENT UNION



Life is a quarry, out of which we are to mold and chisel and complete a character.
—Goethe

ACT II

SPORTS





Builder cheerleaders go into action at the Southwestern-Wichita football game. Left to right are Wendell Sheets, Marilyn Williams, Corlie Sanders, Jack Crawford and Jane Majors. Extremely cold weather accounted for the heavy jackets.

FOOTBALL

Bands take over between halves of the Wichita-Southwestern contest as huge white letters "SC" can be seen in the stands in the background. The game was highlighted by annual Band Day at Veterans Field, and a number of high school bands participated in the program.





Back Row—Gennaro Mirocke, John Wynn, Daniel Kahler, Leon Clapper, Norman Klotz. *Fifth Row*—Alvin Cassingham, Wesley Buller, Loreto Sica, Gilbert Hough, Donald K. Lowry, Royce Orme, Sherman Edmondson, Frank Farley. *Fourth Row*—Robert Dvorak, Max Rife, John Brennan, Wylie Smith, Jimmie Wene, William Davis, Billy Wyckoff, Michael Pietkiewicz. *Third Row*—Hiram Greer, Raymond Nichols, John Versnel, James Tiner, Jerry Martin, Herbert White. *Second Row*—Conrad Kahler, Dean Helmick, John Swafford, Fred Dittmann, Russell Davis, George Gattas, Bobby Roberts, Joseph George. *First Row*—Martin Sidener, Bodge Roberts, Joe Vann, Wiley Armstrong, Howard Spoon, George George, Albert Lara.

FINAL 1948 CIAC STANDINGS

	W	L	T	Pct.
Emporia State Teachers College.....	5	0	0	1.000
Fort Hays State Teachers College.....	3	1	1	.700
Southwestern College	3	2	0	.600
Washburn University	2	2	1	.500
Pittsburg State Teachers College.....	1	4	0	.200
St. Benedict's College	0	5	0	.000

1948 FOOTBALL SEASON

CONFERENCE GAMES

Southwestern College.....	7	—	Fort Hays State College.....	20
Southwestern College.....	7	—	Emporia State College.....	32
Southwestern College.....	27	—	Pittsburg State College.....	13
Southwestern College.....	24	—	St. Benedict's College.....	6
Southwestern College.....	14	—	Washburn University	13

NON-CONFERENCE GAMES

Southwestern College.....	25	—	Bethel College	6
Southwestern College.....	27	—	Baker University	6
Southwestern College.....	21	—	Southwestern Oklahoma Tech.....	7
Southwestern College.....	20	—	Northwestern Oklahoma State.....	7
Southwestern College.....	13	—	Wichita University	39

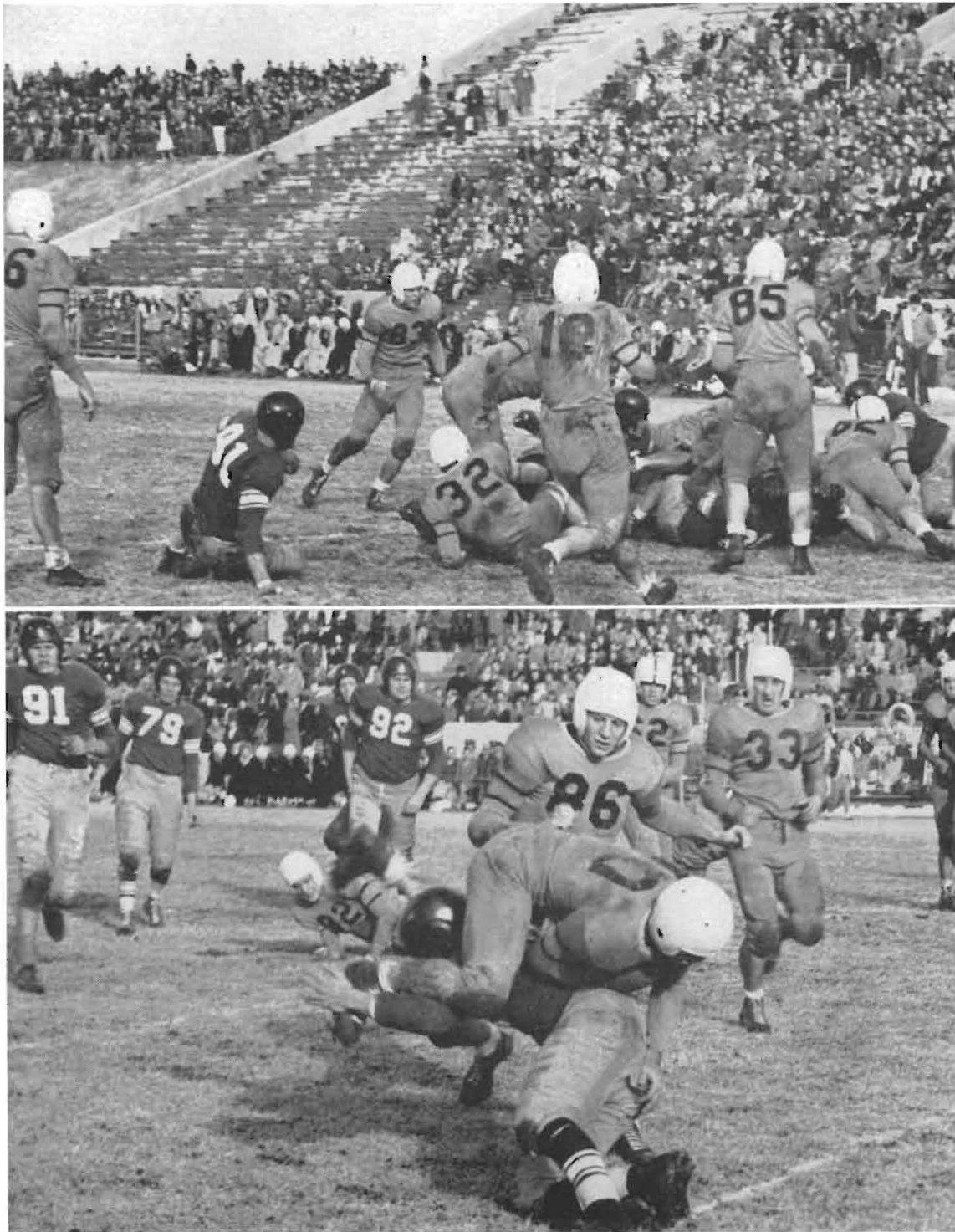


Builder grid coaches, Fred Dittman and Russell Davis, wear anxious expressions during the Southwestern-Wichita University game at Wichita.

GRIDIRON TACTICS

Right end, Dan Kahler, brings a Wichita Shocker ball carrier to the ground after a short gain from scrimmage. Other Builders pictured include Norman Klotz (93) and Al Lara (74).





Upper—Southwestern and Wichita University mix it up in mid-field in the final grid tilt of the 1948 campaign.

Lower—Al Lara tackles a Shocker ball carrier as John Versnel (91), Mike Pietkiewicz (79) and Ralph Shaw (92) rush up to lend assistance.

BASKETBALL



Back Row—Clifton Edens, Bobby Roberts, Wylie Smith, Daniel Kahler, William Burnett, Max Rife, Clyde Vasey, Robert Wright. *Front Row*—Martin Sidener, Billy Wyckoff, Harry Liermann, Kenneth Miller, James Basore, Marvin Webster, Dudley Gilbert.

1948-'49 BASKETBALL SEASON

CONFERENCE GAMES

S. C.	41	St. Benedict's	54
S. C.	50	Pittsburg State	46
S. C.	62	Rockhurst College	38
S. C.	37	Rockhurst College	22
S. C.	52	Fort Hays State	44
S. C.	38	Emporia State	52
S. C.	42	Fort Hays State	68
S. C.	48	Washburn University	58
S. C.	44	Emporia State	65
S. C.	48	Pittsburg State	50
S. C.	48	Washburn University	71
S. C.	67	St. Benedict's	64

NON-CONFERENCE GAMES

S. C.	55	Friends University	38
S. C.	52	McPherson College	32
S. C.	47	Phillips University	44
S. C.	66	Tulsa University	50
S. C.	45	Kiowa Jewelers	39
S. C.	49	Northwestern Louisiana State	75
S. C.	49	Northwestern Oklahoma State	48
S. C.	53	North Texas State College	59
S. C.	51	Central Missouri State College	43
S. C.	54	Tulsa University	53
S. C.	69	Phillips University	48
S. C.	64	McPherson College	50

S. C. "B" TEAM GAMES

S. C.	55	Friends University	39
S. C.	35	Phillips University	52
S. C.	42	Winfield American Legion	36
S. C.	41	Ark. City Miller Implement	29
S. C.	43	Arkansas City V.F.W.	29
S. C.	36	Tulsa University	63
S. C.	40	Cambridge Independents	27
S. C.	51	Winfield American Legion	38
S. C.	52	Phillips University	34
S. C.	43	Winfield Dorie Miller Legion	47
S. C.	43	Cambridge Independents	28

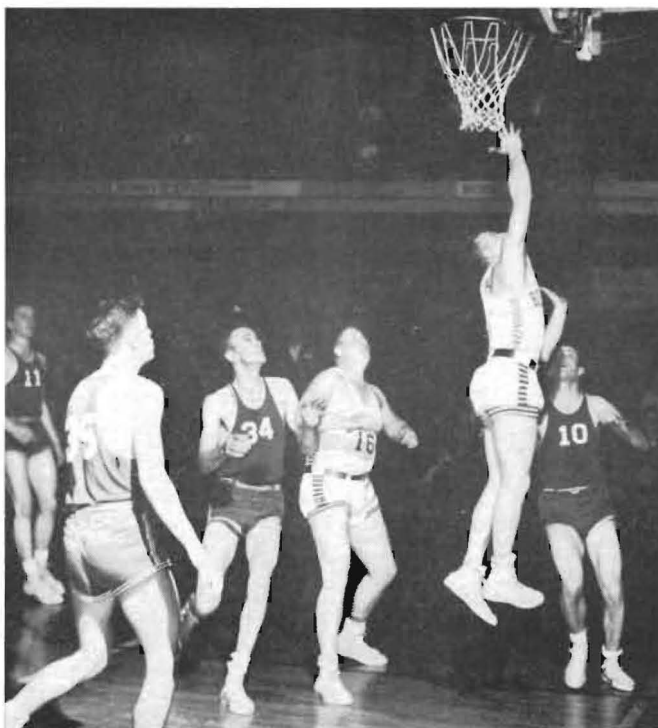
FINAL 1948-'49 CIAC STANDINGS

	W	L	Pct.
Emporia State Teachers College	11	1	.909
Fort Hays State Teachers College	8	4	.667
Washburn University	7	5	.583
St. Benedict's College	6	6	.500
Southwestern College	5	7	.417
Pittsburg State Teachers College	5	7	.417
Rockhurst College	0	12	.000

Dan Kahler, an all-conference choice last winter in basketball for the third successive time, goes up for a rebound against the Rockhurst Hawks in a CIAC game here. Southwestern won the contest, a low-scoring affair, 37 to 22, as Marvin Webster accounted for 11 points.

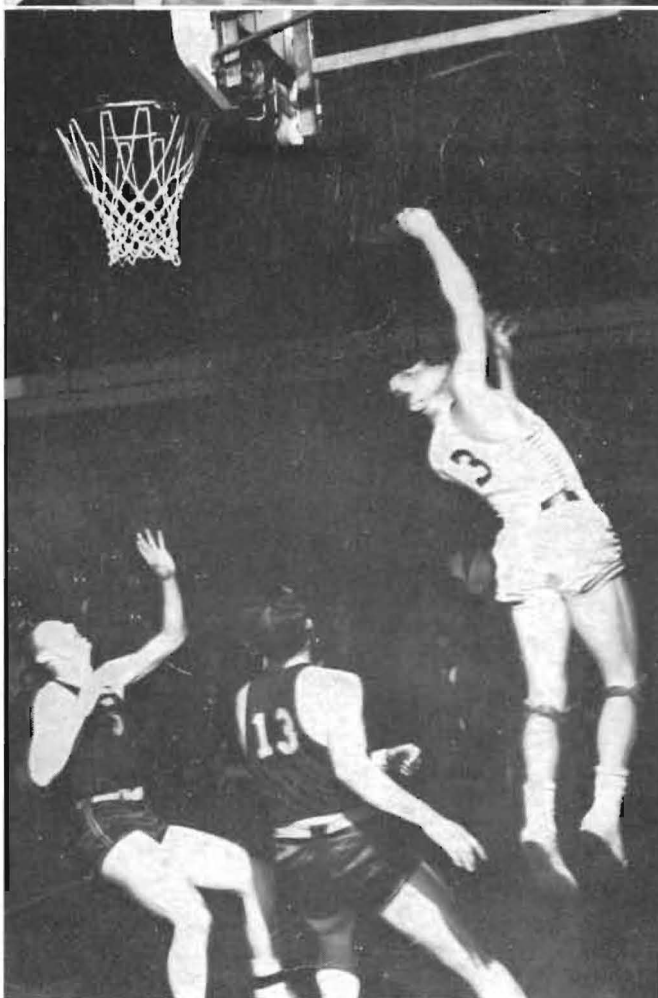
It was this tilt in which Kahler saw his low of the season by picking up but five counters when he was closely guarded by the entire Rockhurst team. The Hawks could manage only 13 points in the first half as the Builders strictly emphasized defense.

Rockhurst's appearance was the first in history in Winfield. The Hawks were admitted to the Central conference in May, 1948. The Kansas City crew ended its season in the loop with no wins in 12 attempts.



Wylie Smith (13) leaps high into the air for a setup in the Pittsburg State contest which the Builders lost after leading all the way. Smith, known for his aggressive play and rebounding, showed considerable improvement over his freshman year, and he still has two more seasons of eligibility remaining.

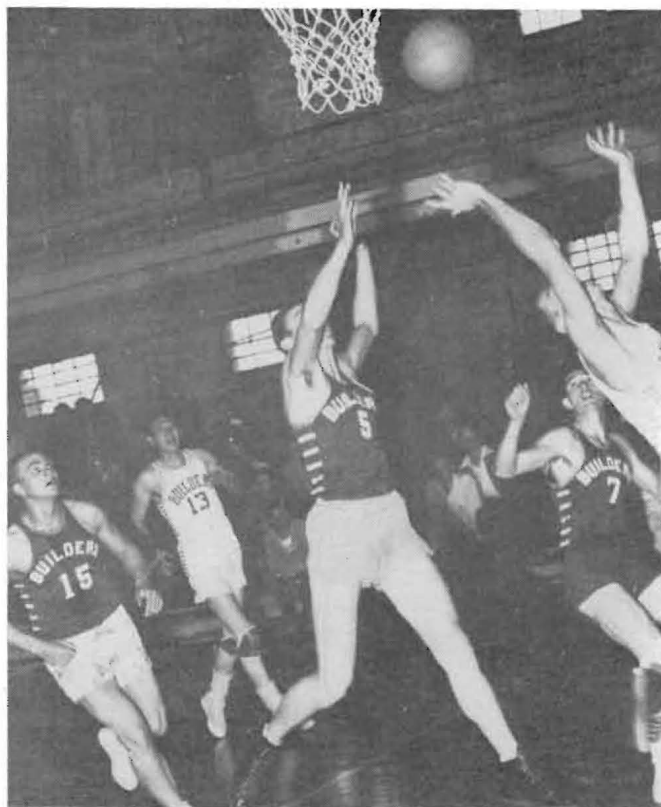
As a result of Pittsburg's winning the game, Southwestern and the Gorillas ended the year tied for fourth in the Central conference each with five victories and seven defeats. Both squads defeated Rockhurst twice while Southwestern beat St. Benedict's, Fort Hays State and Pittsburg. The Gorillas held wins over Southwestern, Washburn and St. Benedict's.



Dan Kahler goes underneath for a layup shot in the intra-squad basketball game played at the beginning of the season. The Whites were victorious, 46 to 34, over the Purples as Kahler led with 16 points. Marvin Webster, captain of the losing outfit, gained runnerup honors with 11. The game was run off to give head Coach Russ Davis an opportunity to see his charges perform under fire.

A number of high school students from surrounding towns, who were on the campus for High School Day, attended the contest and split into two separate cheering sections.

Others in the picture include Max Rife, Philip Pestinger and James Pake.



Marvin Webster, the second leading scorer on this year's varsity squad, flips in two of his season's total of 222 points against Pittsburg State as 6' 8" John Spillman looks on from behind. Webster, who was instrumental in bringing Southwestern a 67 to 64 win over St. Benedict's with a dazzling 20-point performance, had 10 tallies in this contest.

The Builders set the pace for 37 minutes of the Pitt game but the Gorillas staged a brilliant comeback with nine points in the final three minutes to win 50 to 48. Marty Sidener, however, was high scorer with 15, and Spillman, tallest player in the conference, made 14.



TRACK



Back Row—Russell Davis, Gilbert Hough, Ernest Dean, James Roby, Clifton Edens, Bobby Roberts, Herman Osbourn, Delbert Fuhrman, James Pake, Layiwola Adedeji, Wendell Sheets, Robert Blake, Raymond Nichols, Mike Pietkiewicz.

Middle Row—Jerry Martin, Robert Downing, Wesley Buller, Kenneth Miller, Henry Sandground, Arthur Bradley, Royce Orme, Robert Dvorak.

Front Row—Clyde Morton, Loren Alexander, Leonard Sence, Jack Crawford, Ralph Farris, Gordon Holm, James Starkey, Norman Brust, Benjamin Uyesato.

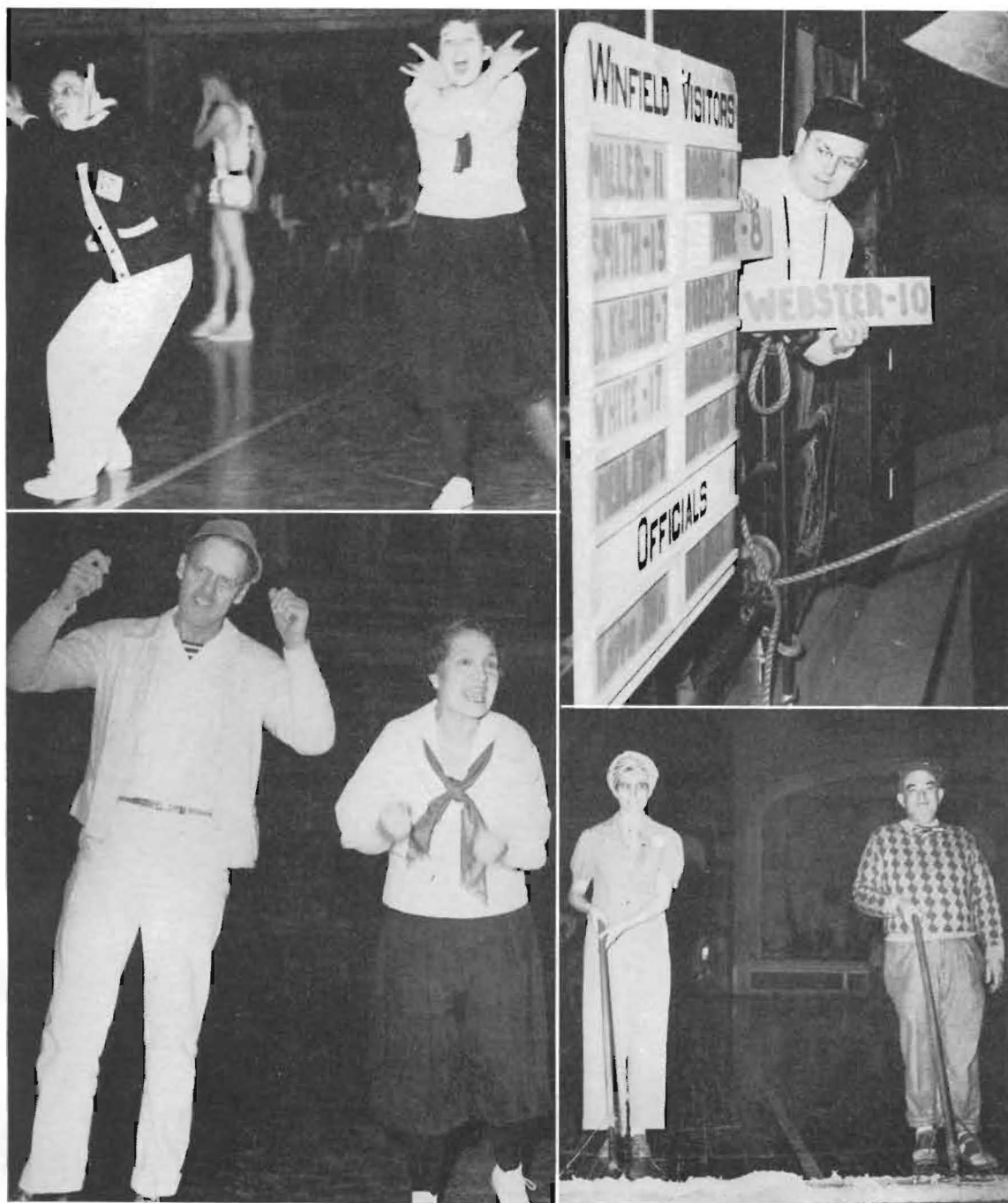


Bill Laggren, Builder hurdles star, is shown at the extreme left running second in the 120-yard high hurdles event here in 1948. The meet was with McMurry College of Abilene, Texas, and Laggren finally won the race in the unusually good time of 15.2 seconds. He also was victorious in the 220-yard low hurdles for an individual total of 10 points.

Laggren closed the season as Southwestern's high scorer followed by Robert Blake, who specialized in the hurdles and the 440-yard dash. Seen running third is Kenneth Sessler, who also took part in the low hurdles event.

MILK BUCKET GAME





Opposite Page (upper)—Kappa Rho cagers and faculty members smilingly display the famous Milk Bucket Trophy. *Lower*—Jinx Janes, KK's, Pi Eps and Kappa Rhos in action.

Above—Cheerleaders, line-up-keepers and floor sweepers composed of faculty members helped make the game a great success.

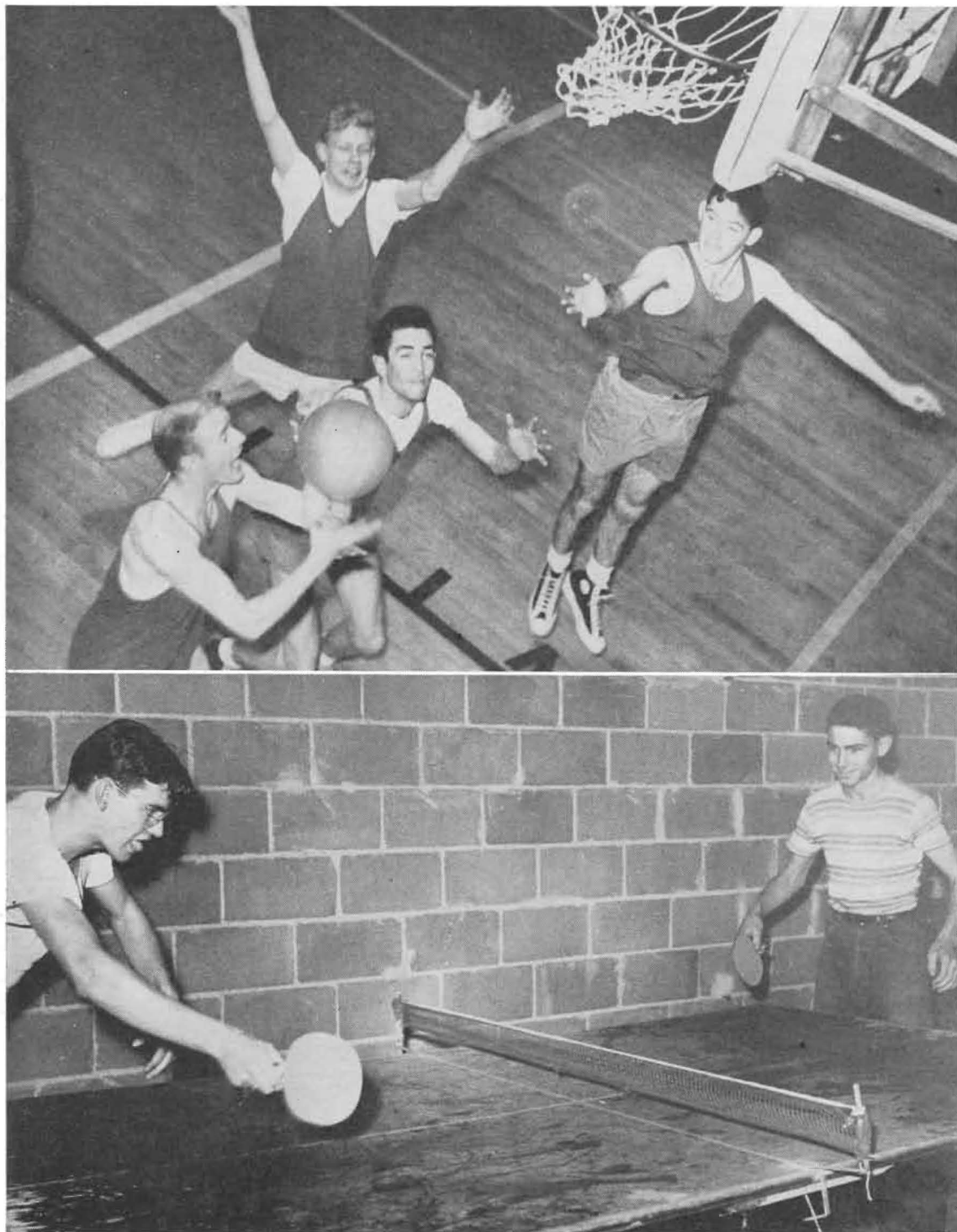
The year 1949 marked the second playing of the annual Milk Bucket basketball classic with Kappa Rho Pep Club defeating Pi Epsilon Pi, 44 to 24.

Cheerleaders were Dr. Arthur Chen, Helen Graham, Sue Jean Covacevich, W. N. Grandy; floor sweepers—Dr. Eleanor Hoag and Dr.

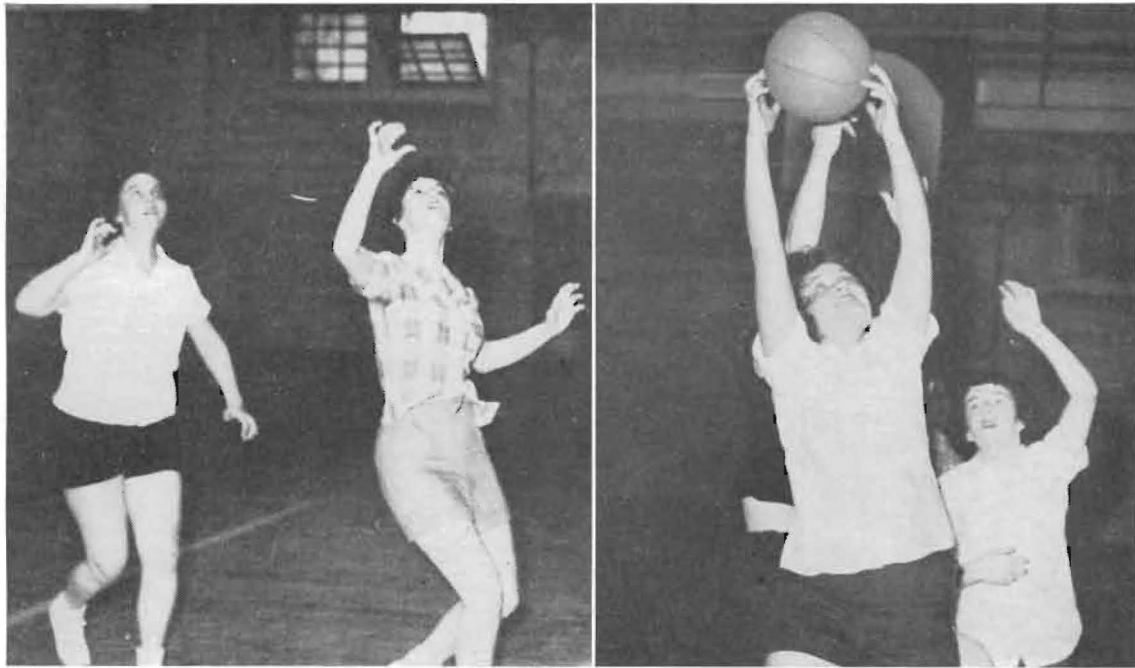
Blaine Nolan; water boy, Dr. George Whipple; lineups, Earl W. Shaffer, and scorekeepers, Paul W. Healy and Dean Monypeny. The faculty was featured in sideline attractions.

Between halves Jinx Jane Pep Club defeated KK Pep Club, 10 to 2, in a girls' game as added entertainment.

INTRAMURALS



Intramural basketball and table tennis are sports to which students devote much time. An intramural program under the leadership of Russell Davis and Lillian Cloud featured a table tennis tournament in the fall and a boys' basketball tournament during the winter.



Intramural girls' basketball is an event which always attracts much attention from members of the student body.

GIRLS' BASKETBALL

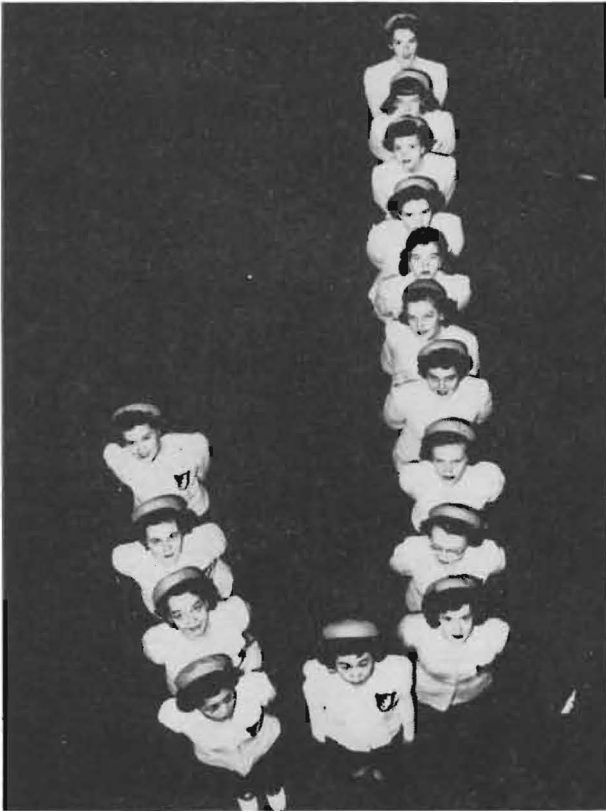
TENNIS

Frank Longley, Mario Cuellar and Paul Jandreau have a workout at tennis on the courts located across the street from the New Student Union.

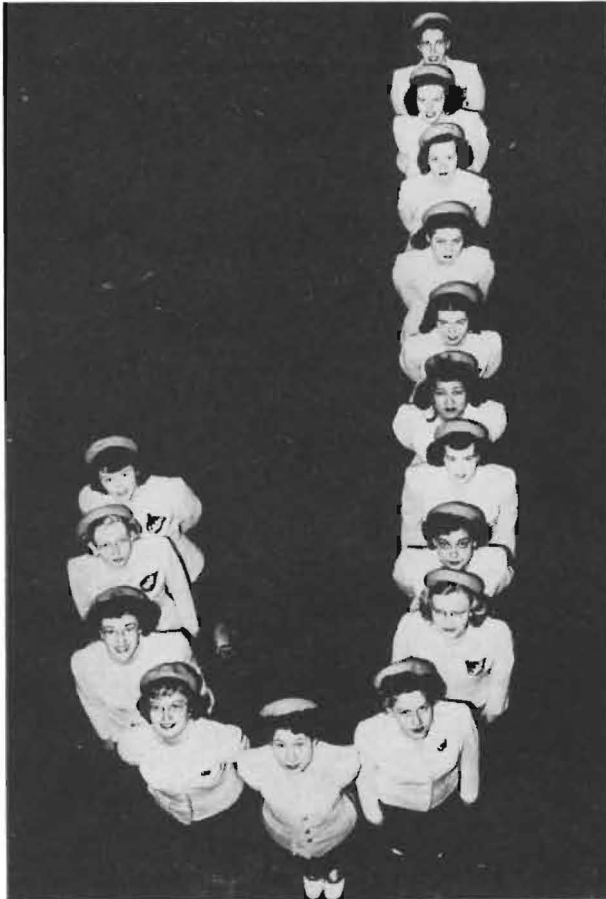


JINX JANE

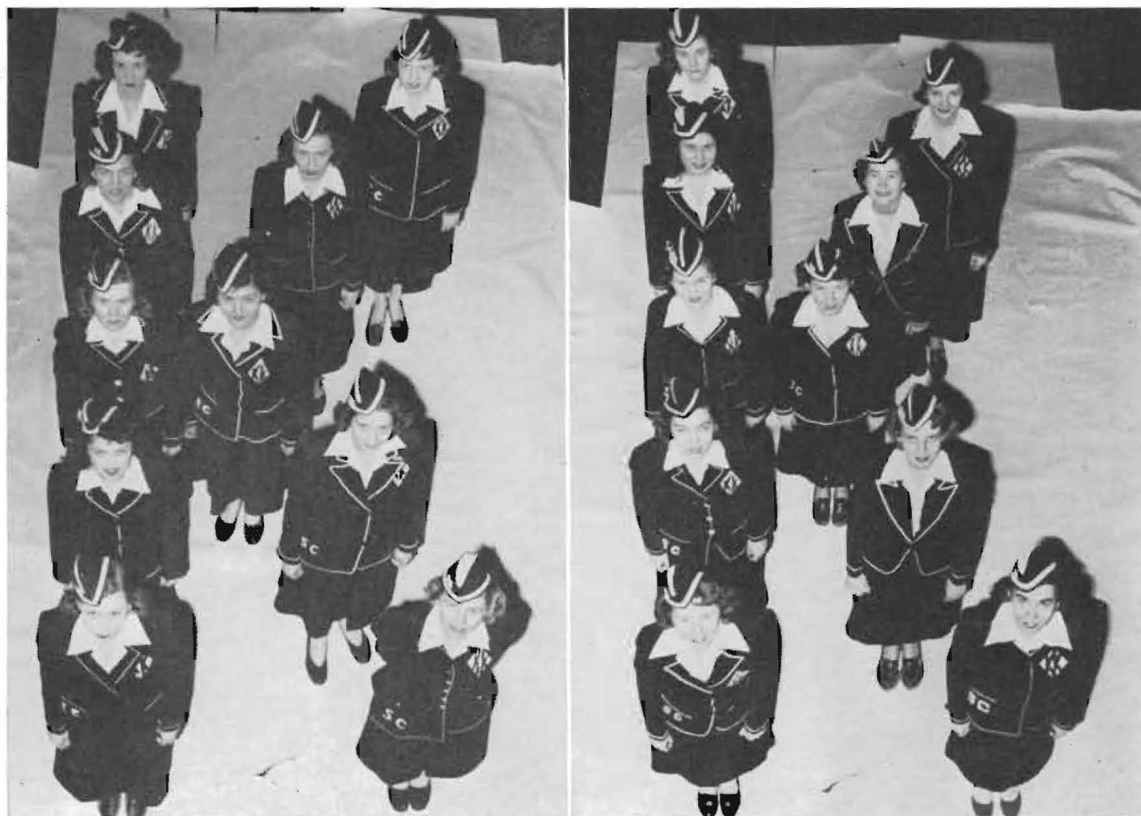
PEP CLUB



Patricia Meeker
 Patricia Grandy
 Phyllis Stuber
 Doris Falen
 Barbara Stuber
 Dolores Dieterich
 Margaret Cavin
 Betty Lou Eckl
 Janet Yoder
 Judy Black
 Ellen Oda
 Doris Sanbei
 Marjorie Hunt
 Phyllis Henry
 Dorothy Kirkwood



Blynn Conway
 Nina Hutchison
 Ravera Rolf
 Grayce Abrahamson
 Ruth Ellen Craig
 Gladys Mizuno
 Norma Black
 Mary Alice Seyb
 Charlotte Mossman
 Barbara Nease
 Moselle Hainline
 Mary Kay Kurtz
 Beverly Byers
 Geraldine Miskimen
 Wilma Rife



K K PEP CLUB

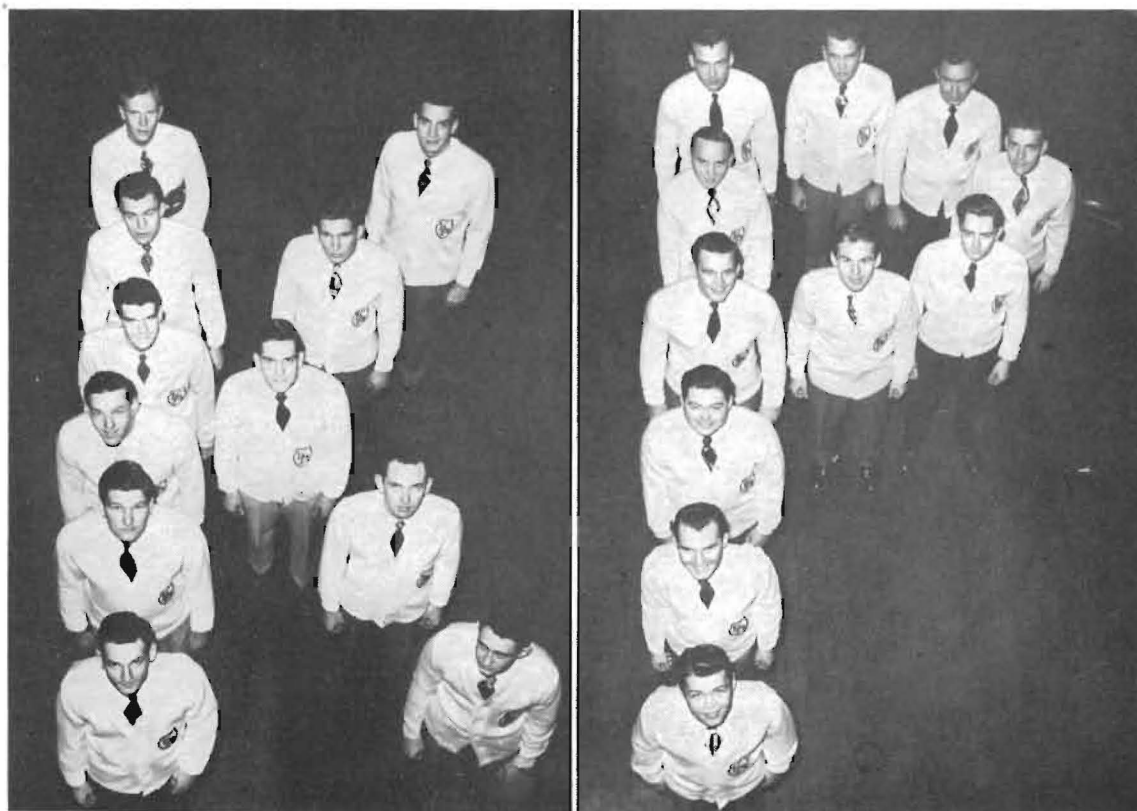
Corlie Sanders
 Violet Beatty
 Jane Majors
 Allein Smith
 Patricia Iverson
 Mary Shaff
 Alice Boyd
 Joan Regier
 Lois Acre
 Elma Dannenfelser

Patricia Day
 Marilyn Williams
 Gladys Morton
 Lorraine Chapman
 Margaret Sullivan
 Helen Dewell
 Joann Ramsdale
 Bette Popp
 Margaret McPeck
 Marjorie Wright

KAPPA RHO PEP CLUB

William Medley
John Pierce
Conrad Kahler
Wylie Smith
James McPeck
Kenneth Miller
Daniel Kahler
Robert Dvorak
James Roby
Eugene Laycock
Norman Harris

Edward Boyd
Eddie Kiley
David Bettis
Gordon Mettling
Jack Ward
DeWane Zimmerman
William Gray
Robert Lloyd
William Scott
Gerald Wheeler
Herbert White



Robert Wright
 Raymond Nichols
 Kay Melia
 James Basore
 Marvin Webster
 Max Rife
 Bobby Roberts
 Donald Warren
 James Henkle
 Robert Garnand
 Willis Stamm
 Keith Greeson
 David Warren



James Pake
 Al Gallagher
 Charles Stansifer
 Donald Pabitzky
 Linton Smith
 Dwight Cook
 Rupert Sullivan
 Benjamin Uyesato
 Leland Harrold
 Philip Stansifer
 Charles Ramsdale
 George Paris
 Melvin Maeshiro
 Gordon Holm
 Asher Kantz
 John Ramsdale
 Leonard Richardson
 Ward Akers



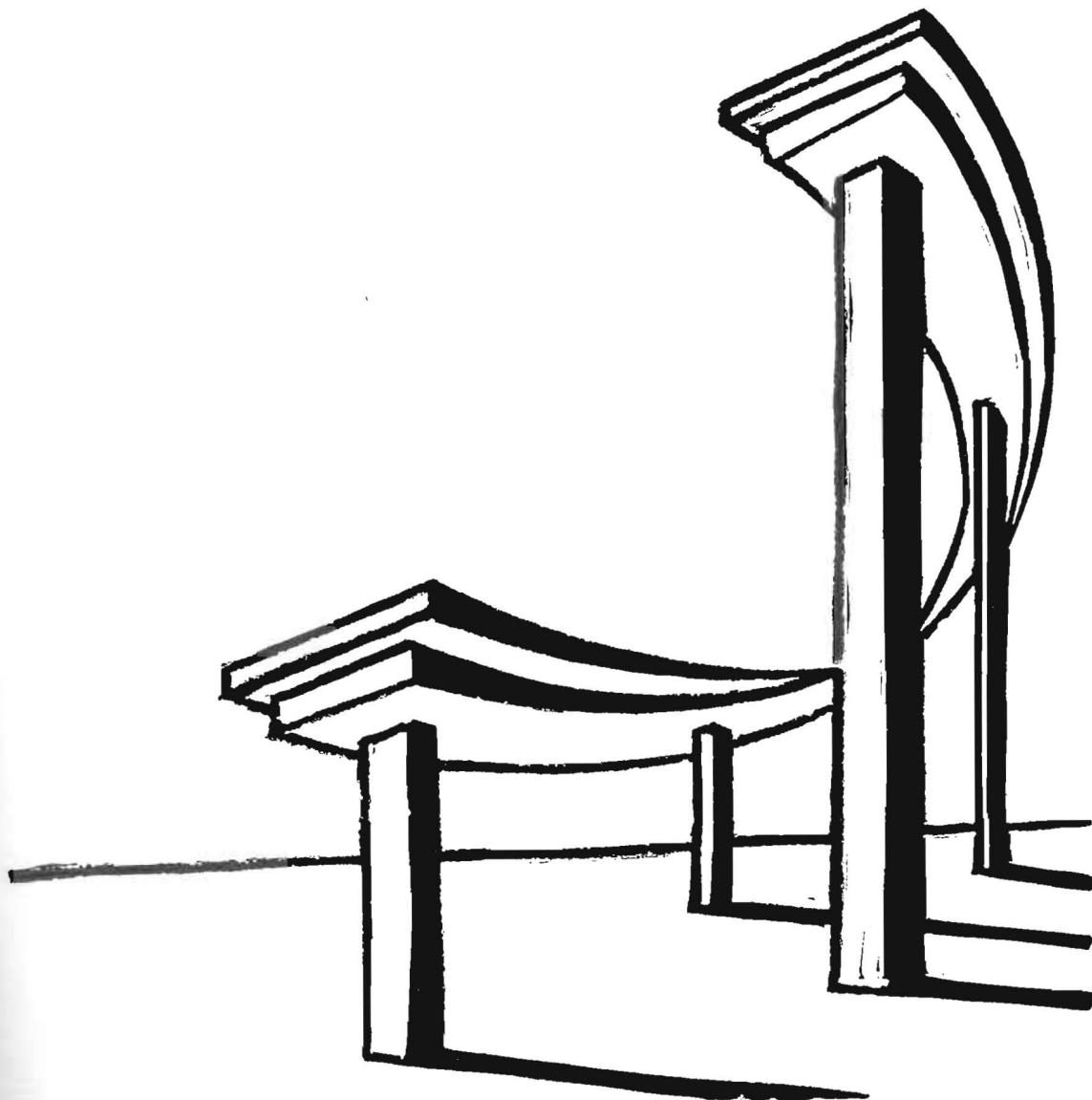
PI EPSILON PI

PEP CLUB

There are more men ennobled by study than by nature.
—*Cicero*

ACT III

CLASSES



SENIORS

OFFICERS

FIRST SEMESTER

Stanley Abel.....*President*.....
Hal Wilcox.....*Vice-President*.....
Gladys Mizuno.....*Secretary-Treasurer*.....

SECOND SEMESTER

George George

Lowell Gish

Gladys Mizuno

Hal Wilcox, Stanley Abel, George George, Gladys Mizuno





G. STANLEY ABEL
Education and Psychology
Student Council, Delphi, W. F., Mound-
builder, Masterbuilder
Winfield

GRAYCE ABRAHAMSON
Home Economics
Kappa Omicron Phi, Gamma Omicron,
A Cappella Choir, Student Council, Jinx
Jane, Masterbuilder
St. John



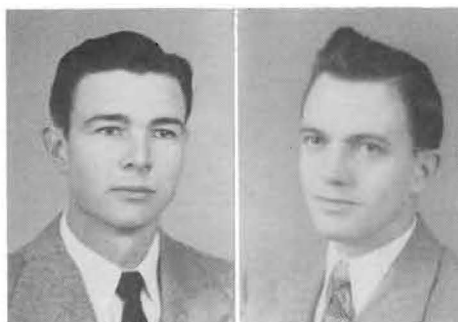
EUGENE ADAIR
Social Science
Student Body President, Campus Players, Pi
Kappa Delta, S.C.A., Honorary Member of
Pi Epsilon Pi, Masterbuilder, Who's Who
Wellington

WILEY ARMSTRONG
Physical Education
Football
Winfield



ELAINE BAIRD
Physical Education
Sigma Pi Phi, Emma Wilson Guild, W.F.,
Girls' Intramurals
Winfield

VIOLET BEATTY
Art
KK, Kappa Pi
Manchester, Oklahoma



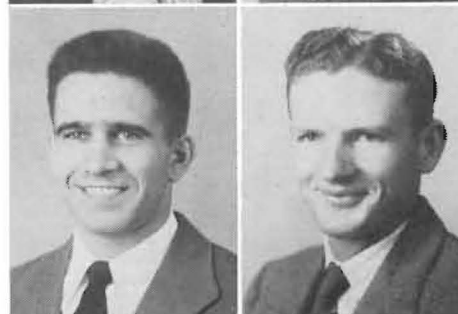
JAMES BASORE
Business
Pi Epsilon Pi, Pi Sigma Phi, A Cappella
Choir, Basketball
Valley Center

STEWART BOONE
Business
A Cappella Choir, Pi Epsilon Pi, Pi Gamma
Mu, Band, Who's Who, Masterbuilder
Winfield



DOROTHY BRONNENKANT
Biology
Pi Sigma Gamma
Winfield

BARBARA BROWN
Piano and Public School Music
Sigma Pi Phi, Alpha Mu, Orchestra, Band, A
Cappella Choir, Organ Club, W.F., Emma
Wilson Guild, S.C.A.
Augusta



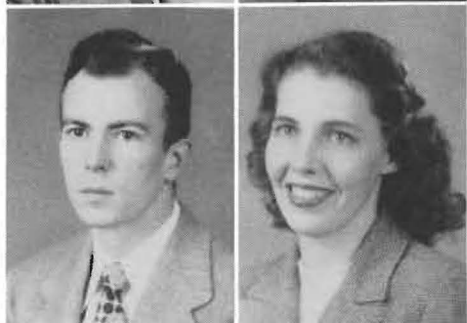
EDWARD F. BRUNNER
Education
Student Council
Freehold, New Jersey

WILLIAM S. BURNETT
Business and Physical Education
Pi Sigma Phi, Who's Who, Boys' Dormitory
Council, Masterbuilder
Wetumka, Oklahoma



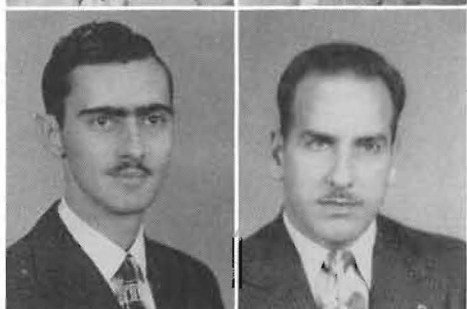
CARLOS CARRASCO
Social Science Divisional
Athens, S.C.A., W.F.
La Punta, Peru

MERRILL W. CHRISTY
Business Administration
Oswego



RICHARD CONOVER
Sociology
Kappa Rho, Sociology Club, Student Council,
Delphi, Pi Gamma Mu
Bronx, New York

MARY BLYNN CONWAY
Home Economics
Gamma Omicron, Jinx Jane
Tulsa, Oklahoma



EARL L. COWEN
Public School Music
Alpha Mu, Delphi, A Cappella Choir,
Little Symphony
Winfield

COLE LEE CULVER
*Education and Psychology,
Physical Education*
Kappa Rho
Manton, Michigan



DONALD CULVER
Education and Physical Education
Kappa Rho
Manton, Michigan

BILL B. DIAL
Religion
Dallas, Texas



DOLORES E. DIETERICH
Business and Economics
Jinx Jane, Sigma Pi Phi, Sociology Club,
Pi Gamma Mu, Senior Counsellor, Radio
Winfield

LOIS DRYDEN
Social Science Divisional
Belles Lettres, Sociology Club
Larned



MARGARET DUNGAN
Music
Sigma Pi Phi, A Cappella Choir, Alpha Mu,
Organ Club, Jinx Jane
Winfield

LEONARD W. ELLIOTT
Business
Delphi, S.C.A., Photo Flops, W.F.
Plains

JAMES W. FRY
Physics and Mathematics
 Pi Sigma Gamma
 Winfield

GEORGE GEORGE
Physical Education
 Football, Pi Sigma Phi, Delphi, Student
 Council
 Kingston, Pennsylvania

LOWELL GISH
English
 Athens, Collegian, Fledgling, Student
 Council, UNESCO, Who's Who
 Kingman

WILLIAM E. GRAY
Business Administration
 Kappa Rho
 Isabel

HIRAM GREER
Mathematics, Education, and Psychology
 Football
 Searcy, Arkansas

LELAND HARROLD
Physics and Mathematics
 Pi Epsilon Pi, S.C.A., Delphi, Pi Sigma
 Gamma, W.F.
 Sedgwick



DEAN HELMICK
Physical Education and Education
 Football, Collegian
 Sedan

RUTH ANNE HOLMES
Home Economics
 S.C.A., W.F., Kappa Omicron Phi, Gamma
 Omicron, Fellowship Teams, Emma Wilson
 Guild
 Plains

JAMES G. HOWELL
Education
 Delphi, Boys' Dormitory Council
 Grandin, Missouri

BONNIE JACOBS
Public School Music
 Sigma Pi Phi, Alpha Mu, A Cappella Choir,
 Madrigalians, Emma Wilson Guild
 Foraker, Oklahoma

HARRY W. JACOBS
*Business and Economics,
 Psychology and Education*
 Winfield

ROBERT S. JOHNSON
Business
 Kappa Rho
 Winfield

RALPH J. JONES

Sociology

Student Council, Pre-Ministerial Club, A Cappella Choir, Male Quartet, Sociology Club
Concordia

ELVERTA JULIAN

Education and Social Science

Sociology Club
Winfield

CLINTON KELLER

Business and Education

Arkansas City

WILLIAM D. KITTRELL

Physical Education

Football
Winfield

DONA KOVACH

Social Science Divisional

Belles Lettres, Emma Wilson Guild, S.C.A.,
Senior Counsellor, *Moundbuilder*, Sociology
Club
Anthony

CONRAD A. KAHLER

Education

Football, Basketball, Golf, Kappa Rho,
Pi Sigma Phi
Winfield



VERNA RUTH LEAKE

Business

Winfield

FRANK B. LONGLEY

Business

Athens

Foraker, Oklahoma

WILLIAM MEDLEY

Physical Education

Kappa Rho, Pi Sigma Phi, Crimson Quill,
Basketball, *Collegian*
Caldwell

ALICE MILLER

Home Economics

Gamma Omicron, Kappa Omicron Phi, S.C.A.
Winfield

GLADYS YOSHIKO MIZUNO

Education and Physical Education

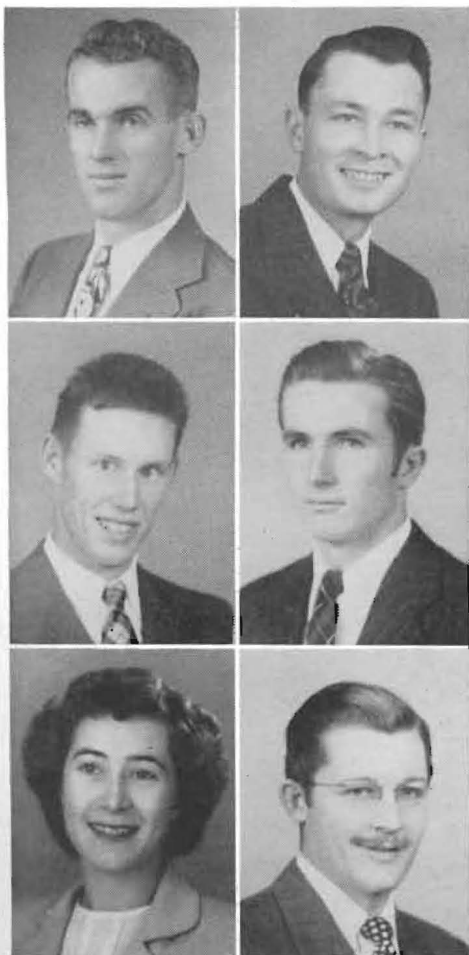
Jinx Jane, Sigma Pi Phi, S.C.A., W.F.,
C.S.L., Student Council, Emma Wilson
Guild, Pi Gamma Mu

Wahiawa, Oahu, Territory of Hawaii

GEORGE MORELAND

Pre-Medical and Biology

Davis, Oklahoma



GILMER NELLIS
Business Administration and Education
Winfield

GEORGE PARIS
Art
Pi Epsilon Pi, Kappa Pi, A Cappella Choir, W.F.
Dighton

EDWIN EUGENE PECK
Mathematics
Basketball, Football Manager
Caldwell

CHARLES RAMSDALE
Education and Psychology
A Cappella Choir, Pi Epsilon Pi, W.F.
Burdett

JOANN RAMSDALE
Music and Education
K.K., Orchestra, Band, W.F., Student
Director of A Cappella Choir
Winfield

JOHN RAMSDALE
Physics
Pi Epsilon Pi, A Cappella Choir,
Pi Sigma Gamma
Burdett



AVENELL RUTH REAZIN
Home Economics
Emma Wilson Guild, Gamma Omicron, W.F.,
S.C.A., Kappa Omicron Phi, Senior Coun-
sellor, Student Council
St. John

WILMA RIFE
English
Jinx Jane, English Club, Masterbuilder,
Fledgling
Hesston

BODGE ROBERTS
Physical Education
Pi Sigma Phi, Football
Barnsdall, Oklahoma

DEAN EARL ROSE
Education and History
Liberal

FREDA MAE ROSE
Commerce and Education
Belles Lettres
Liberal

DOROTHY FAY ROSS
Religion
S.C.A., W.F., Emma Wilson Guild,
Fellowship Team
Halstead



RUTH KATHLEEN RUSS
Social Science Divisional
S.C.A., W.F., Emma Wilson Guild
Sterling

ALBERT J. RYMPH
Social Science
Pre-Ministerial Club
Wichita

CORLIE SANDERS
Education and Psychology
Sigma Pi Phi, K.K. Head Cheerleader,
English Club, Who's Who
Winfield

ESTHER SCHIEWE
Education
Perry, Oklahoma

VERNARD R. SCOTT
Business Administration and Education
Winfield

WILLIAM SCOTT
Language and Literature Divisional
Editor of *Collegian*, *Moundbuilder*, Kappa
Rho, Crimson Quill, Director of Athletic
Publicity, English Club
Winfield

LAMBERT SERVIS
Business
Winfield

MARTIN R. SIDENER
Physical Education and Education
Football, Basketball, Baseball, Golf,
Pi Sigma Phi
Winfield

JAMES HOWARD SPOON
Physical Education
Football, Pi Sigma Phi
Picher, Oklahoma

PHILIP D. STANSIFER
Chemistry
Pi Epsilon Pi
Garden Plain

JOSEPH STUBER
Business
Kappa Rho
Winfield

RUTH SULLIVAN
Public School Music
Little Symphony
Colorado Springs, Colorado



DICKSIE JEANNE TAYLOR
Public School Music
 Choir
 Great Bend

RICHARD E. TAYLOR
Business Administration
 Winfield

MARY JEAN TELFER
Social Science
 Sigma Pi Phi, Sociology Club, Student
 Council, Girls' Intramurals
 Belleville, Illinois

THELMA JUNE UNRUH
Psychology and Education
 W.F., Enuma Wilson Guild, S.C.A.,
 Crimson Quill, *Collegian*
 Coldwater

JOSEPH B. VAGNER
Mathematics
 Winfield

JOSEPH VANN
Physical Education
 Pi Sigma Phi, Football
 Commerce, Oklahoma



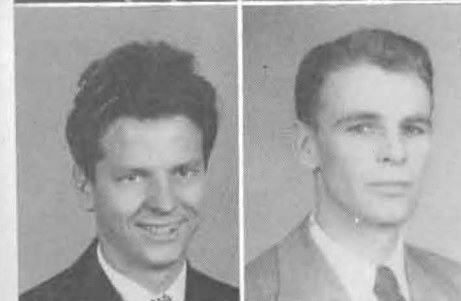
WARREN WALLACE WAGONER
Education and Psychology
 Winfield

THOMAS E. WARD
Public School Music
 Band, Orchestra
 Arkansas City



GERALD WHEELER
Business Administration and Education
 Kappa Rho
 Winfield

HAL DEAN WILCOX
Business Administration
 A Cappella Choir, Mixed Quartet, Chord-
 builders, Masterbuilder, Student Council,
 Who's Who, Student Conductor of A Cap-
 pella Choir
 Winfield



RAYMOND RICHARD WORDEN
Religion
 Pre-Ministerial Club
 Rocky Ford, Colorado

JOHN YOUNG
Education and Psychology
 Winfield

JUNIORS

OFFICERS

FIRST SEMESTER		SECOND SEMESTER
Dwight Cook.....	<i>President</i>	James McPeek
Robert Wright.....	<i>Vice-President</i>	Leonard Richardson
Helen Dewell.....	<i>Secretary-Treasurer</i>	Norma Jean Black

Back Row Dwight Cook, Robert Wright.
Front Row—Leonard Richardson, Helen Dewell, Norma Jean Black, James McPeek.



SHIRLEY ANDERSON
NORMAN BAKER
VESTA FAYE BAKER
LENA BEGGS
NORMA JEAN BLACK



ROBERT BLAKE
EUNICE BONNELL
JOYCE BOONE
PAUL BOWERSOX
EDWARD BOYD



ARTHUR BRADLEY
JOHN BRENNAN
WILLIAM BYRNE
JAMES CATE
LORRAINE CHAPMAN



VERA CLARK
WAYNE CLARK
MELVIN CONRAD
DWIGHT COOK
LLOYD COON



ELMA DANNENFELSER
HELEN DEWELL
HOMER DOWNUM
BETTY LOU ECKL
HAROLD EDWARDS



WILLIAM EMURA
ANN FAUST
ETHEL GILLIG
KEITH GREESON
MOSELLE HAINLINE





ORVAL HARDIN
LILA MAE HOLMES
WALTER HUGHES
RICHARD JONES
DANIEL KAHLER

GRACIE KAWAKAMI
WARREN KELLY
VELMA KING
DOROTHY KIRKWOOD
ROBERT KNOWLES

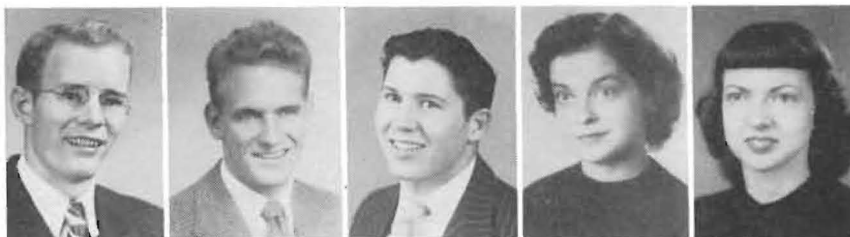
IRENE KUEHN
SUE LAGGREN
WILLIAM LAGGREN
AL LARA
JACK LIGHTFOOT

ROBERT LLOYD
ARTHUR MAXSON
DAVID McCAMPBELL
WILLIAM McFALL
JOAN McNAIR

JAMES McPEEK
MARGARET McPEEK
GORDON METTLING
WAYNE METTLING
LLOYD MILLER

GLADYS MORTON
DONNA NICHOLS
ELLEN ODA
QUENTON PRATHER
ROBERT RAYNES

CLARENCE RETHORST
LEONARD RICHARDSON
MELVIN RISING
MARY ALICE SEYB
MARY SHAFF



EMMET SMITH
LINTON SMITH
RALPH SMITH
JAMES STARKEY
ARLENE STEFFEN



MAX STOUT
ELDON STROUD
HOWARD STUBER
PHYLLIS STUBER
MARGARET SULLIVAN



JAMES TINER
LA DELLE VAGNER
CHARLES VASEY
JOHN VERSNEL
DONALD WADE



JACK WARD
DAVID WARREN
MARGARET WARWICK
GEORGE WEBER
MARVIN WEBSTER



HERBERT WHITE
BOB JONES WILLIAMS
LELAN WILSON
ROBERT WRIGHT
WILLARD WRIGHT



SOPHOMORES

OFFICERS

FIRST SEMESTER

Edward Boyd..... *President*
 Donald Pabitzky..... *Vice-President*
 Julia Black..... *Secretary-Treasurer*

SECOND SEMESTER

David Bettis
 John Wynn
 Ruth Ellen Craig

Back Row—John Wynn, David Bettis.
Front Row—Edward Boyd, Ruth Ellen Craig, Julia Black, Donald Pabitzky.



DONALD ADAMS
FRANCES ADAMS
JOHN ADAMS
WARD AKERS
JAMES BAILEY



MONNA LEE BARNES
JULIA BLACK
WINONA BLEDSOE
EDWARD BOYD
WILLIAM BROOKS



WESLEY BULLER
CLYDE CARPENTER
MARION CHOI
THOMAS CLARK
KENNETH COLE



WILBUR COOPER
ROBERT COYKENDALL
MARY CRAIG
RUTH ELLEN CRAIG
JACK CRAWFORD



DOYLE CUMMINGS
FANNIE CUMMINGS
GENE DILLMAN
KEITH DILLMAN
JACK DORSEY



ROBERT DVORAK
JACK EDWARDS
ROBERT EVERLY
DORIS FALEN
FRANK FARLEY



DONALD FAUST
MARY FOO
JEAN FRAZIER
DELBERT FUHRMAN
DONALD FULGHUM





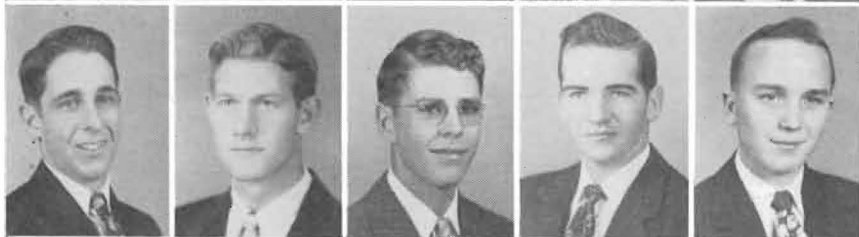
WILLIAM GAREY
ROBERT GARNAND
DUDLEY GILBERT
ELEANOR GOODRICH
CONSTANCE GREEN



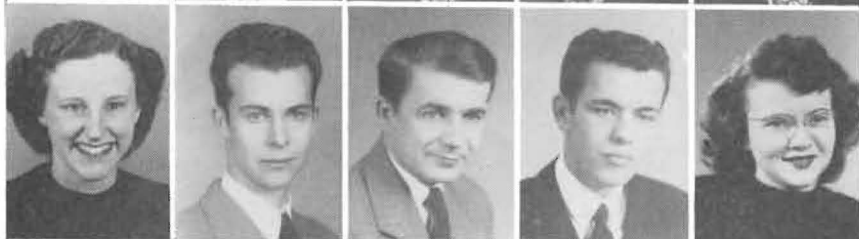
JOHN GREEN
CORRINE GWIN
SHIRLEY HAMMOND
JOHN HENDERSON
GEORGE HILL



DONALD HOLLIWAY
RAYMOND HOUGH
NINA HUTCHISON
JAMES HYMAN
PAUL JANDREAU



PHILIP JOHNSTON
ROBERT M. JONES
WESLEY KAUFMAN
ROBERT KELTNER
EDDIE KILEY



PATRICIA KNOWLES
WILLIAM KOONS
LOUIS KOVACH
VERNIE LANGHOFER
LEONA LARKIN



EUGENE LAYCOCK
HARRY LIERMANN
BETTY ANN LONG
DAVID LORD
DONALD K. LOWRY



MELVIN MAESHIRO
FLOYD MARTIN
JERRY MARTIN
EARL MARQUARDT
KAREN MATZEN

MARY McCURRY
OPAL McDANIEL
NILA McIRVIN
WILLIAM McMINIMY
RUTH MEAD



LOIS MEANS
PATRICIA MEEKER
FRANZ MERCADO
KENNETH MILLER
RALPH MILLER



GENNARO MIROCKE
GERALDINE MISKIMEN
GREGORY MONTOYA
JOYCE MOORE
JACK MORLEDGE



CLYDE MORTON
CHARLOTTE MOSSMAN
WILLIAM NEELY
NORMAN NELSON
JOYCE NEWMAN



JOANN OGLE
HERMAN OSBOURN
DONALD OVERSTAKE
DONALD PABITZKY
MERCEDES PALMER



WILLIAM PANG
LAWRENCE PECK
JOHN PIERCE
WILLIAM PLANK
LEONARD POTTER



LOUISE REED
JOAN REGIER
JAMES RENNER
MARY RETHORST
DOROTHY REYNOLDS





MAX RIFE
RAVERA ROLF
DORIS SANBEI
LEVI SANDERS
ETHEL SATO



LEONARD SENCE
HOWARD SERVIS
ESTHER SHELDON
LORETO SICA
WYLIE SMITH



DONALD SONDEL
HAROLD SOONG
BARBARA STUBER
CARL SUBERA
RUPERT SULLIVAN



MARILEE SUNDBYE
NOLA TANG
BARBARA TANJI
PATRICIA TAYLOR
ROWENA TAYLOR



JOHN THOMAS
DAN TREADWAY
DORINE TUCKWOOD
DOYLE UNDERWOOD
CLYDE VASEY



MIRIAM WADE
VIRGINIA WARD
DONALD WARREN
JIMMIE WENE
LEO WHALEN



WALTER WOLFE
JERRY WOODS
HELEN WORDEN
JOHN WYNN
JANET YODER

FRESHMEN

OFFICERS

FIRST SEMESTER

DeWane Zimmerman.....*President*.....
Kay Melia.....*Vice-President*.....
Thomas Tanaka.....*Secretary-Treasurer*.....

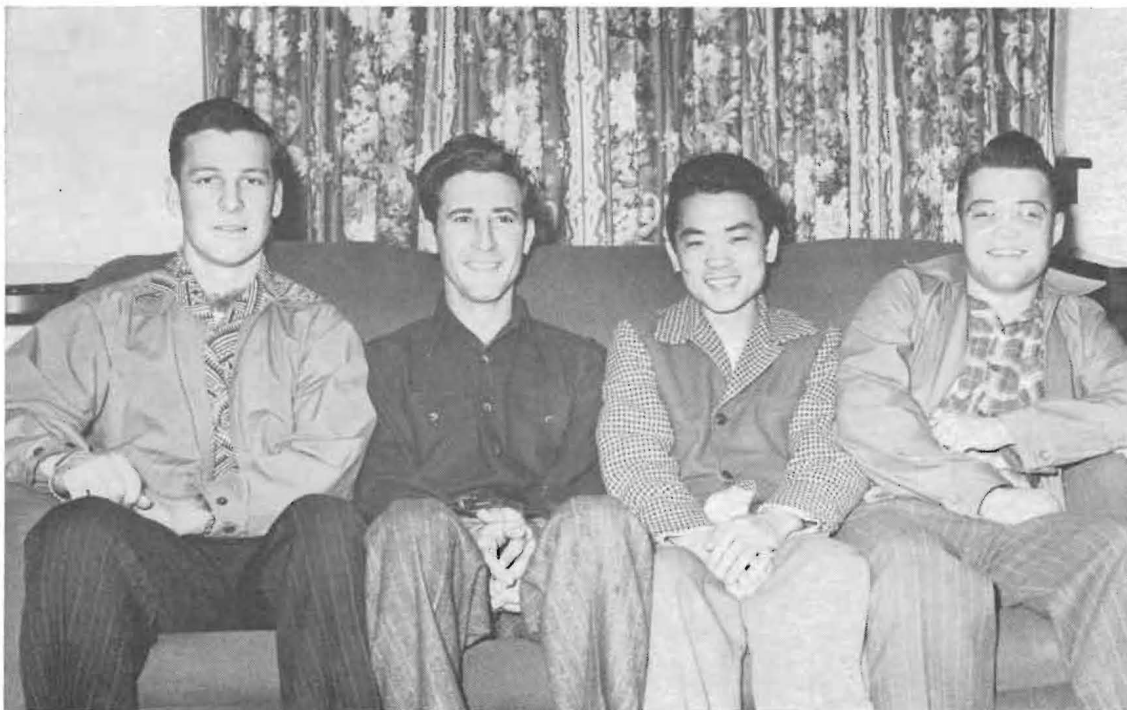
SECOND SEMESTER

Kay Melia

Paul Book

Thomas Tanaka

Kay Melia, Paul Book, Thomas Tanaka, DeWane Zimmerman





LOIS ACRE
LOREN ALEXANDER
WAYNE BAKER
KATHRYN BARNETT
ESTON BEERY

BETTEY BELDEN
JOAN BENSON
KENNETH BICKFORD
FRANCIS BOOK
ALICE BOYD

RUTH BOYD
MONA BRADBURY
DEAN BRINKMEYER
GRACE BROOKS
NORMAN BRUST

DARRELL BUTTERFIELD
MANDELL BUTTERFIELD
BEVERLY BYERS
BRUCE CAMPBELL
ALVIN CASSINGHAM

MARGARET CAVIN
CLIFFORD CHEATHAM
LEON CLAPPER
CARL COLLIER
MURLYN CONOVER

HAROLD COOK
THURMAN COOK
GEORGE CRAIG
MARIO CUELLAR
MARILYN DALY

PATRICIA DAY
RALPH DENICK
BEVERLY DUNSHEE
CLIFTON EDENS
VERNON EDWARDS

WILLIAM EISSING
FRED ERVIN
LLOYD FELDMAN
JOAN FENNEMA
FREDERICK FRY



RICHARD FRY
RONALD FUKAYA
JOAN FULGHUM
JEAN FULTON
LOU ANN GIMPLE



ROSS GRAHAM
PATRICIA GRANDY
EVELYN HAMLIN
VERDA HANES
NORMAN HARRIS



EDWIN HARVEY
RAMONA HAUSER
JENEVIEVE HAYWARD
LOUIS HAYWARD
NOLA HEMINGER



PAUL HENDERSHOTT
JAMES HENKLE
PHYLLIS HENRY
CHARLES HIEBSCH
JIMMIE HILLIARD



GORDON HOLM
GILBERT HOUGH
ARDETH HOYT
CAROL HUNT
MARJORIE HUNT



VIRGIL HUTTON
HOWARD ISHIKAWA
PATRICIA IVERSON
JOANN JOHNSON
MARILYN JOHNSON





CHARLEEN KANAGA
KARENE KENNEDY
ELMER KNOWLTON
DALE KUBIK
MARY KAY KURTZ



BEVERLY LeVEIN
DENNIS LINDSAY
JANE MAJORS
ANN KATHERINE MANN
JOYCE MARSHALL



GEORGIA MASON
GUSSIE JUNE MAYO
CHARLENE McCALEB
BETTY McGOWAN
LOIS McNEIL



BETTY DE MeVEY
KAY MELIA
PHILLIP MILLER
WANDA MILLER
MARY MOHNEY



RANDY MOMAN
JESSIE MORGAN
WARREN MURRAY
BARBARA NEASE
ORETA NEWBY



ROBERT NEWELL
JAMES OLDFIELD
JAMES PAKE
DONALD PARKER
JOHN PARKER



ANN PARKS
FLOYD PETTIT
NITA PIKE
ELIZABETH POPP
DEAN RAMSAY

CHARLOTTE RAUSCH
EDWARD REYNOLDS
JAMES ROBY
PHYLLIS RODERICK
WAYNE ROGERS



WAYNE ROSS
LAVERNE SEGLEM
WENDELL SHEETS
ALLEIN SMITH
IRENE SNYDER



ELDON SNYDER
WILLIS STAMM
CHARLES STANSIFER
NORMA STROBEL
BETH ANN SULLIVAN



RAMONA SUMMERS
THOMAS TANAKA
BARBARA TERRY
MYRNA THOLE
KENNETH THOMAS



ROSALIE THOMPSON
KENNETH THURMAN
ETHEL TOKUDA
RICHARD TREADWAY
HAROLD TRETBEAR



DONALD VANGIESON
KENNETH WAGONER
SHARON WELLS
DONALD WHITE
MARILYN WILLIAMS



RODRICK WILSON
MARTIN WONER
MARJORIE WRIGHT
BETTY WYNN
DeWANE ZIMMERMAN



O, call back yesterday, bid time return!
—*Shakespeare*

CURTAIN CALL





HOMECOMING QUEEN

Dorothy Kirkwood



HOMECOMING QUEEN CORONATION



MOUNDBUILDER QUEEN

Ravera Rolf



MOUNDBUILDER QUEEN CORONATION



*Virginia
Ward*



*Ruth
Ellen
Craig*

MOUNDBUILDER QUEEN RUNNERSUP



ATTENDANTS

Julia Black

Mary Kay Kurtz

Marjorie Wright

Marilyn Williams

Bette Popp



MAY QUEEN

Grayce Abrahamson



Students present folk dances as part of the annual May Fete activities.

Proud seniors reap the rewards of four years' labor as they receive their diplomas at commencement time.

Graduating seniors make the "Cap and Gown Day" trek up the "77."





Holland Hall's "Last Roundup" theme won first prize in the Homecoming house decorations contest.

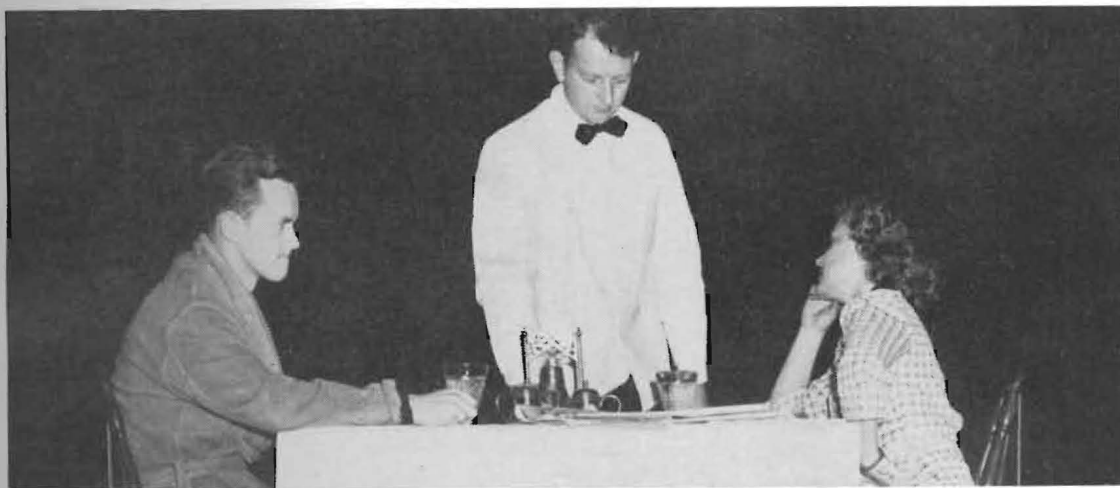
Stewart Boone and Jim Basore's Franklin makes a last stand on the president's lawn at Halloween.

Southwestern College's float for the Winfield Diamond Jubilee celebration rolls down Main Street.

The Builder band marches through downtown Winfield during the Jubilee celebration.

Smith Hall girls don football suits as a part of dormitory initiation.





Arthur Maxson plays the role of a servant, and David Warren and Betty Lou Eckl pose as man and wife in a scene from the Junior assembly play.

Faculty members and students attend a Crimson Quill sponsored "Smorgasbord" in Arkansas City.

Patricia Wheeler poses as Mrs. Erma Scott in the annual presentation of the "Fakelty."

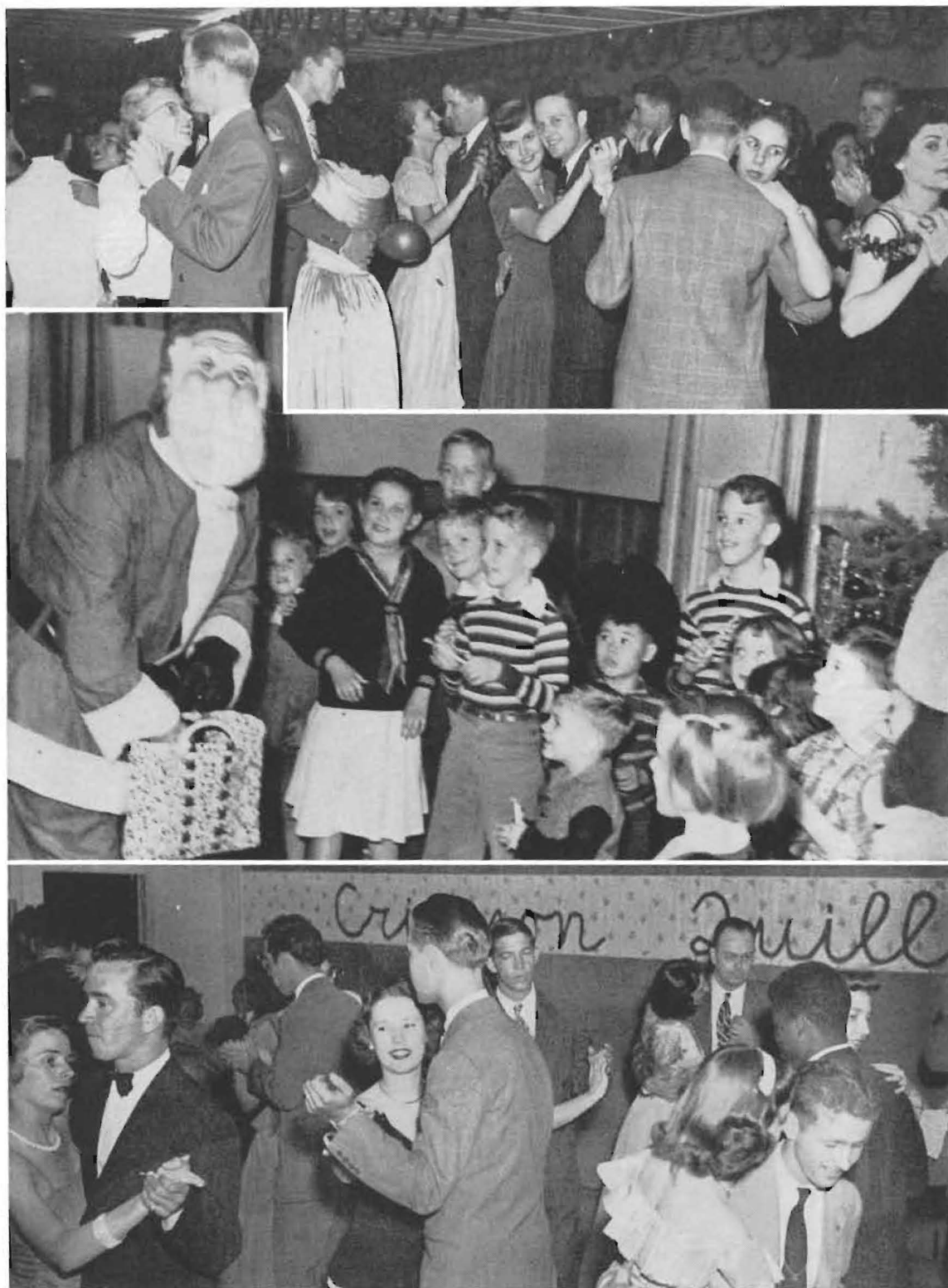


Kappa Rho rushees give speeches under the rotunda as a part of their initiation.

Delphi rushees wore paint and letter cards and sang songs as a part of their initiation.

Students and faculty members display beards and mustaches which were grown for Winfield's Diamond Jubilee celebration.





Students will have memories of sweet music and dancing cheek to cheek when they recall the Christmas formal.

Santa Claus passes out gifts to the children at the Faculty Christmas party.

The Crimson Quill formal was one of the highlights of the year's activity for the Journalism students.



Posters and portraits were everywhere during the Moundbuilder Queen campaign.
 Freshman enrollee, Vernon Edwards, receives a helping hand from his faculty adviser, Miss Throckmorton.
 More than 400 persons took part in the annual presentation of the "Elijah" in Stewart fieldhouse.
 Gay Ninety crooners pose beside the traditional barber pole during the K K assembly program.
 Mermaids, Spanish doubloons, pearls and giant sea turtles were a part of the decorations at the Alpha Mu-Kappa Pi formal.



Norma Jean Black, candidate for '48 K. U. Relays queen, receives a send-off at the depot by fellow students.

Students and faculty get acquainted at the Faculty Formal Reception held in Music Hall.

A scene from "Parlor Story," the annual play presented by the Belle-Athenian literary society under the direction of Miss Helen Graham.



Master of Ceremonies Hal Wilcox and Queen Grayce Abrahamson reigned over the 1949 May Fete which is held annually on the green in front of and below Richardson Hall.

Joan Regier and Marjorie Wright present a short skit to the tune of "Sunflower" as a part of the K K assembly.

Betty Lou Eckl and Bette Popp do a bit of gossiping in a scene from "The Old Maid and the Thief."

Ramona Hauser, Builder freshman, donates blood to the Red Cross blood bank when the Bloodmobile made its one day stand in the New Student Union.



The ceremony of building the mound will linger long in the memory of Builder students and alumni.

GENERAL INDEX

- | | | |
|--------------------------|------------------------|----------------------------------|
| A Cappella Choir—43 | Gamma Omicron—42 | Pi Kappa Delta—26 |
| Admissions Counsellor—16 | Girls' Double Trio—44 | Pi Sigma Gamma—41 |
| Allison Hall—50 | | Pre-Ministerial—31 |
| Alpha Mu—47 | Holland Hall—49 | President—9 |
| Athens—39 | Housemothers—17 | Public Relations—16 |
| | | Queens—98-104 |
| Band—46 | Intramurals—66-67 | Radio—26-27 |
| Basketball—60-62 | Jinx Jane—68 | Registrar—10 |
| Belles Lettres—38 | Juniors—82-85 | |
| Boys' Quartette—44 | Kappa Omicron Phi—42 | Scholarships—35 |
| Business Manager—10 | Kappa Pi—40 | Secretaries—17 |
| Business Personnel—16 | Kappa Rho—70 | Seniors—74-81 |
| | K K—69 | Sigma Pi Phi—36 |
| Campus Players—22, 23 | Madrigallians—44 | Smith Hall—48 |
| Cheerleaders—56 | Masterbuilders—34 | Snaps—105-112 |
| Collegian—24 | Mixed Quartet—44 | Sociology Club—29 |
| Crimson Quill—29 | Milk Bucket Game—64-65 | Sophomores—86-90 |
| Custodian—16 | Moundbuilder—25 | String Ensemble—44 |
| | | Student Christian Association—32 |
| Dean of College—10 | Orchestra—45 | Student Council—33 |
| Dean of Women—10 | Order of the Mound—35 | Student Union—53 |
| Delphi—37 | Organ Club—47 | Subscribers—113 |
| | | Track—63 |
| Eagerheart—23 | Photo Flops—40 | |
| East Hall—50 | Pi Epsilon Pi—71 | Wesley Fellowship—30-31 |
| English Club—28 | Pi Gamma Mu—28 | Wesley Hall—51-52 |
| | | Who's Who—34 |
| Faculty—11-15 | | |
| Football—57-59 | | |
| Freshmen—91-95 | | |

PERSONAL INDEX

Abel, Stanley25, 33, 34, 37, 52, 74, 75
 Abrahamson, Grayce33, 34, 42, 43, 50, 68, 75, 99, 104, 112
 Acre, Lois49, 69, 92
 Adair, Eugene22, 33, 34, 75, 109
 Adams, Donald31, 32, 37, 87
 Adams, Frances49, 87
 Adams, Jolin30, 87
 Adedeji, Layiwola28, 29, 51, 63
 Akers, Ward18, 33, 35, 45, 46, 71, 87
 Alexander, Loren46, 52, 63, 92
 Amini, Bahman52
 Anderson, Shirley83
 Armstrong, Wiley57, 75
 Bailey, Charles51
 Bailey, James87
 Baird, Elaine35, 75
 Baker, Norman83
 Baker, Vesta Faye43, 45, 46, 47, 50, 83
 Baker, Wayne37, 44, 47, 52, 92
 Barnett, Kathryn46, 49, 92
 Barns, Monna Lee87
 Basore, James60, 71, 75
 Beatty, Violet40, 46, 69, 75
 Beery, Eston45, 46, 92
 Beggs, Lena50, 83
 Belden, Betty36, 49, 92, 107
 Bell, Dr. Carl S.11, 40
 Benson, Joan92
 Bettis, David70, 86
 Bickford, Kenneth39, 52, 92, 111
 Black, Julia Ann32, 38, 68, 86, 87, 101, 103, 111
 Black, Norma Jean68, 82, 83, 99, 111
 Blake, Margaret17
 Blake, Robert63, 83
 Bledsoe, Winona28, 36, 48, 87
 Bloomer, Dollye17
 Bonnell, Eunice83
 Book, Francis52, 92
 Book, Paul52, 91, 108
 Boone, Joyce46, 83
 Boone, Stewart34, 46, 75
 Bowersox, Paul83
 Boyd, Alice Lea43, 48, 68, 92
 Boyd, Edward33, 70, 83, 86, 87, 101
 Boyd, Ruth40, 92, 110
 Bradbury, Mona36, 50, 92
 Bradley, Arthur63, 83, 108
 Bronnenkant, Dorothy75, 110
 Brennan, John51, 57, 83
 Brinkmeyer, Dean92
 Brooks, Grace46, 92
 Brooks, William26, 31, 32, 33, 46, 87
 Brown, Barbara36, 43, 45, 46, 47, 48, 75
 Brunner, Edward75
 Brust, Norman31, 51, 63, 92
 Buller, Wesley57, 63, 87
 Burdette, E. Marie11
 Burnett, William34, 51, 60, 75, 111, 113
 Burgess, Lyman16
 Butterfield, Darrell52, 92, 109
 Butterfield, Mandell46, 52, 92
 Byers, Beverly22, 36, 48, 67, 68, 92, 101, 105
 Bynum, Walter16
 Byrne, William83
 Campbell, Eruce51, 92
 Canedo, Mario52
 Carpenter, Clyde31, 87
 Carr, Wayne21, 39
 Carrasco, Carlos76
 Casburn, Mrs. Mabel17, 50
 Cassingham, Alvin57, 92
 Cate, James39, 83, 111
 Cavin, Margaret46, 47, 48, 67, 68, 92
 Chapman, Lorraine42, 69, 83
 Cheatham, Clifford92

Chen, Dr. Arthur S. Y.11, 28, 29, 65
 Choi, Marion49, 87
 Christy, Merrill76
 Chun-Hoon, William52
 Clapper, Leon51, 57, 92
 Clark, Thomas87
 Clark, Vera83
 Clark, Wayne83
 Cloud, Lillian11, 28
 Colbrunn, Ethel11, 105
 Cole, Kenneth24, 27, 87, 109
 Collier, Carl26, 92
 Conover, Marilyn51, 92
 Conover, Richard29, 76
 Conrad, Melvin30, 31, 83, 108
 Conway, Blynn42, 68, 76
 Cook, Dwight33, 41, 43, 71, 82, 83, 101, 107
 Cook, Harold92
 Cook, Thurman92
 Coon, Lloyd35, 83
 Cooper, Mrs. Mabel17, 49
 Cooper, Wilbur39, 87
 Covacevich, Mrs. Sue Jean11, 40, 64, 65
 Cowen, Earl37, 43, 45, 47, 76
 Coykendall, Robert87
 Craig, George26, 92
 Craig, Mary Frances87
 Craig, Ruth Ellen25, 36, 43, 48, 68, 86, 87, 101, 102, 107
 Cramer, Nancy17
 Crane, Dorothy11
 Crawford, Jack27, 31, 56, 63, 87, 108
 Crawford, James29, 109
 Cuellar, Mario39, 40, 53, 67, 92
 Culver, Donald76
 Culver, Cole76
 Culver, Mearl P.9, 28, 105
 Cummings, Doyle37, 43, 44, 87
 Cummings, Fannie42, 50, 87
 Daly, Marilyn31, 38, 43, 44, 49, 92, 111
 Dannenfelser, Elma24, 25, 29, 36, 46, 48, 69, 83, 101, 107, 109
 Davidson, Robert S.16
 Davis, A. Russell11, 57, 63
 Davis, William Ray57
 Day, Patricia46, 48, 69, 92
 Dean, Ernest63
 Denick, Ralph92
 Dewell, Helen22, 23, 26, 38, 49, 69, 82, 83
 Dial, Billy B.76
 Dielmann, Edith12
 Dielmann, Fern12
 Dieterich, Dolores28, 68, 76, 105, 111
 Dillman, Keith87
 Dillman, Willis Gene87
 Dittmann, J. Fred12, 57
 Dorsey, Jack87
 Downing, Robert63
 Downum, Homer83
 Dryden, Lois29, 50, 76, 111
 Dulaney, Rex O.108
 Dungan, Margaret76
 Dunshee, Beverly92
 Dvorak, Robert57, 63, 64, 70, 87
 Eaton, Dr. Theodore H.12
 Eckl, Betty Lou43, 44, 47, 48, 68, 83, 107, 112
 Edens, Clifton60, 63, 92, 108
 Edmondson, Sherman25, 57
 Edwards, Harold66, 83
 Edwards, Jack87
 Edwards, Vernon92, 110
 Eissing, William51, 93
 Elliott, Leonard28, 32, 37, 40, 43, 76
 Emura, William83
 Erwin, David Fred93

PERSONAL INDEX (Continued)

Everly, Robert	87
Evers, Helen	12, 28, 42
Falen, Doris	50, 68, 87
Farley, Frank	57, 87
Farris, Ralph	27, 63, 113
Faust, Ann	40, 83
Faust, Donald	43, 47, 87
Feldman, Lloyd	52, 93
Fennema, Joan	24, 25, 28, 29, 38, 93, 101, 111, 113
Foo, Mary	48, 87
Ford, Laura N.	12
Frazier, Jean	49, 67, 87
Fry, Frederick	93
Fry, James	41, 77, 111
Fry, Richard	37, 52, 93
Fuhrman, Delbert	63, 87
Fukaya, Ronald	51, 93
Fulghum, Don	87
Fulghum, Joan	93, 109
Fulton, Jean	43, 49, 93
Gallagher, Al	71, 101
Garey, William	88
Garnand, Robert	51, 71, 88
Gattas, George	57
George, George	57, 74, 77
George, Joseph	57
Gilbert, Dudley	60, 88, 108, 109
Gillig, Ethel	29, 30, 31, 38, 83
Gimble, Lou Ann	38, 43, 50, 93
Gish, Rodney	39, 46, 52
Gish, Lowell	34, 77, 107
Goodrich, Eleanor	88
Gould, Stanley	47
Graham, Ross	46, 52, 93
Graham, Helen	12, 23, 64, 65
Grandy, Patricia	45, 68, 93
Grandy, W. N.	12, 28, 31, 32, 64, 65, 111
Gray, William	70, 77
Green, Constance	36, 88
Green, John	37, 88
Greer, Hiram	57, 77
Greeson, Keith	71, 83
Griffith, Elmer	108
Gwin, Corrine	49, 88
Haggerty, Earl	52
Hainline, Moselle	43, 44, 47, 48, 68, 83, 99, 111
Hale, John D.	13
Hall, P. Fredrick	13, 44
Hamlin, Evelyn	93
Hammond, Shirley	35, 41, 88
Hanes, Verda	38, 50, 93
Hansen, John D.	13, 26, 111
Hardin, Orval	84
Harris, Norman	51, 64, 70, 93
Harrold, Leland	37, 41, 52, 71, 77
Hurvey, Edwin	23, 30, 31, 33, 37, 51, 93
Hauser, Ramona	30, 31, 32, 49, 93, 112
Hayes, Charles	31
Hayward, Jenevieve	93
Hayward, Louis	93, 113
Haywood, C. Robert	13
Healy, Paul W.	13, 26, 37
Helmick, Dean	24, 57, 77, 107
Heminger, Nola	43, 44, 46, 47, 49, 93
Hendershott, Paul	44, 47, 93
Henderson, John	40, 88
Henkle, James	71, 93
Henry, Phyllis Ann	45, 68, 93
Hiebsch, Charles	93
Highfill, Jerry M.	13
Hill, George	51, 88
Hill, Robert Wiley	24
Hilliard, Jimmie	51, 93
Hoag, Dr. Eleanor	13, 26, 28, 32, 64, 65, 107, 111
Hoberecht, Verlin	31
Holliway, Donald	88
Holm, Gordon	37, 46, 47, 51, 63, 71, 93
Holmes, Lila Mae	47, 48, 84
Holmes, Ruth Anne	30, 31, 32, 42, 77
Hough, Gilbert	57, 63, 93
Hough, Raymond	88, 109
Houston, Celestine	27
Howell, James	37, 51, 77, 101, 111
Hoyt, Ardeth	93
Hughes, Walter	84
Hunt, Carol	38, 48, 93
Hunt, Marjorie	43, 44, 48, 64, 68, 93
Hutchison, Nina	30, 32, 36, 43, 50, 68, 88
Hutton, Virgil	28, 93
Hyman, James	88
Ishikawa, Howard	51, 93
Iverson, Patricia	69, 93, 108
Jacobs, Bonnie	43, 44, 47, 77
Jacobs, Harry	77
Jandreau, Bonnie	40, 46, 50
Jandreau, Paul	67, 88
Johnson, JoAnn	43, 44, 45, 93
Johnson, Marilyn	36, 93
Johnson, Robert	77
Jones, Ralph	29, 31, 33, 43, 44, 78
Jones, Richard	22, 39, 84, 108, 111
Jones, Robert M.	22, 26, 88
Julian, Elverta	29, 78
Kahler, Arthur D.	13
Kahler, Daniel	22, 23, 27, 57, 60, 64, 70, 84
Kahler, Conrad	57, 64, 70, 78, 108
Kanaga, Charleen	36, 43, 46, 50, 94
Kantz, Asher	14, 41, 71
Kaufman, Wesley	88
Kawakami, Gracie	50, 84
Keller, Clinton	78
Kelley, Rex	31
Kelley, Warren Richard	84
Keltner, Bobbie Lee	88
Kennedy, Karene	94
Kiley, Eddie	46, 64, 70, 88
King, Dorothy	17, 28
King, Velma	35, 43, 44, 47, 48, 84, 107
Kirkwood, Dorothy	33, 42, 43, 48, 68, 84, 98, 99
Kittrell, Dan	78, 108
Klingman, Creston	14, 46, 108
Klotz, Norman	57, 108
Knowles, Patricia	36, 47, 48, 88
Knowles, Robert	51, 84
Knowlton, Elmer	94
Kolbe, Albert	31
Koons, William	40, 88
Kovach, Dona	23, 38, 78
Kovach, Louis	33, 41, 88
Kubik, Dale	46, 51, 94, 103
Kuehn, Irene	29, 32, 38, 84
Kuhlman, Robert	45, 46
Kurtz, Mary Katherine	36, 45, 46, 64, 68, 94, 101, 103
Laggren, Sue	49, 84
Laggren, William	63, 84, 108
Langhofer, Vernie	22, 30, 40, 43, 88, 108
Lara, Albert	57, 84
Larkin, Leona	42, 48, 88
Lauter, Felix	29
Lawrence, Anna	16
Laycock, Eugene	19, 46, 70, 88
Leake, Ruth	78
Lee, Deane	37, 52
LeVein, Beverly	94
Liermann, Harry	60, 88
Lightfoot, Jack	84
Lindsay, Dennis	31, 37, 40, 51, 66, 94
Lloyd, Robert	24, 25, 28, 29, 40, 70, 84, 107, 109

PERSONAL INDEX (Continued)

Long, Betty Ann	88	Oda, Ellen	34, 48, 68, 84, 101
Longley, Frank	13, 67, 78	Ogle, Joann	43, 47, 49, 89
Lord, David	88	Oldfield, James	28, 52, 94
Lowry, Donald K.	52, 57, 88	Orme, Royce	52, 57, 63
Lynch, Arnold	14, 47	Osbourne, Herman	63, 89
Maeshiro, Melvin	22, 37, 46, 51, 71, 88	Overstake, Donald	89
Majors, Jane	56, 69, 94, 108	Pabitzky, Donald	22, 23, 71, 86, 89
Mann, Ann Katherine	36, 40, 48, 53, 94	Pake, James	46, 63, 71, 94
Marquardt, Earl	88	Palmer, Mercedes	49, 89
Marshall, Joyce	49, 94	Pang, William	52, 89
Martin, Floyd	88	Paris, George	30, 40, 43, 45, 46, 71, 79
Martin, Jerry	57, 63, 88	Parker, Donald	94
Masih, Nolin	31	Parker, John	94
Mason, Georgia	28, 49, 94, 107	Parks, Dolores Ann	49, 94, 111
Matzen, Karen	88	Peck, Edwin	52, 79
Maxson, Arthur	29, 84, 107	Peck, Lawrence	89
Mayo, Gussie June	36, 48, 53, 94, 106	Pettit, Floyd	46, 51, 94
McCaleb, Charlene	94, 117	Pierce, John	64, 70, 89
McCampbell, David	40, 41, 51, 54	Pietkiewicz, Michael	57, 63
McCurry, Mary	36, 48, 89	Pike, Nita	49, 94
McDaniel, Opal	24, 29, 49, 89, 103	Plank, William	89
McFall, William	30, 31, 40, 84, 101	Popp, Elizabeth	33, 43, 44, 46, 48, 69, 94, 101, 103, 112
McGowan, Betty	28, 38, 43, 45, 94, 103	Posay, J. T.	31
McIrvin, Nila	31, 36, 50, 89	Potter, Leonard	52, 89
McMinimy, William	89	Poundstone, W. J.	10, 105
McNair, Joan	29, 84	Prather, Quenton	31, 84
McNeil, E. W.	10	Prophet, Carl	101
McNeil, Lois	31, 33, 36, 43, 44, 45, 47, 94, 110	Pumpelly, Charles	41
McPeck, James	33, 70, 82, 84, 99, 108, 109	Racker, Walter	51
McPeck, Margaret	69, 84, 99, 109, 110	Ramsay, Dean	31, 37, 43, 44, 51, 94, 101, 108
McVey, Betty De	38, 46, 49, 94	Ramsdale, Joann	43, 45, 46, 69, 79, 110
Mead, Ruth	41, 89	Ramsdale, Charles	43, 71
Meadows, Mabel	17, 50, 107	Ramsdale, John	41, 43, 71, 79
Means, Lois	43, 46, 89	Rausch, Charlotte	95
Medley, William	64, 65, 70, 78	Raynes, Robert	22, 84
Meeker, Patricia	22, 48, 68, 89, 107	Reazin, Avenell	30, 33, 42, 50, 79
Melia, Kay	37, 43, 46, 51, 71, 91, 94	Reed, Louise	89
Mercado, Franz	89	Regier, Joan	49, 69, 89, 109, 112
Metting, Gordon	43, 70, 84, 108	Renner, James	40, 89, 108
Metting, Wayne	84	Rethorst, Clarence	32, 66, 85, 109
Miller, Alice	32, 42, 78	Rethorst, Mary	29, 32, 35, 36, 50, 89
Miller, Mrs. Dorothea	14	Reynolds, Dorothy	89
Miller, Kenneth	60, 63, 64, 70, 89	Reynolds, Edward	37, 95
Miller, Lloyd	45, 46, 84	Richardson, Leonard	33, 39, 51, 71, 82, 85, 111
Miller, Phillip	94	Rife, Max	57, 60, 64, 71, 90
Miller, Ralph	89	Rife, Wilma	28, 34, 68, 79
Miller, Wanda	36, 50, 94	Rising, Melvin	85
Mirocke, Gennaro	57, 89	Roberts, Bobby H.	57, 60, 63, 64, 71
Miskimen, Geraldine	48, 68, 89, 109	Roberts, Bodge	57, 79
Mizuno, Gladys	28, 32, 35, 36, 50, 68, 74, 78	Roberts, Kenneth	24, 29, 103
Mohney, Mary Alice	38, 94, 111	Roby, James	37, 44, 51, 64, 70, 95, 101
Moman, Randy	22, 23, 43, 51, 94, 108	Roderick, Phyllis	49, 95
Montoya, Gregory	89	Rogers, Wayne	55
Monypeny, William	10, 28	Rolf, Ravera	30, 38, 40, 42, 43, 47, 50, 63, 80, 100, 101
Moore, Joyce	50, 89	Rose, Dean	79
Moreland, George	78	Rose, Freda Mae	50, 79, 111
Morgan, Jessie	94	Rosecrans, William	39
Morledge, Jack	89	Rosecrans, Eva	17, 48
Morris, Charles	26	Ross, Wayne	46, 52, 95
Morton, Clyde	32, 63, 89	Ross, Dorothy Fay	50, 79
Morton, Gladys	28, 31, 48, 69, 84	Russ, Ruth	80
Mossman, Charlotte	36, 43, 44, 45, 46, 47, 68, 89	Rymph, Albert	31, 80
Motazedi, Iraj	52	Sanbei, Doris	29, 33, 26, 48, 68, 90, 101
Murray, Warren	94	Sanders, Corlie	28, 34, 36, 56, 69, 80, 105
Nease, Barbara	35, 43, 45, 47, 48, 68, 94	Sanders, Levi	90
Neely, William	26, 89	Sandground, Henry	63
Nellis, Gilmer	79	Sato, Ethel	48, 90
Nelson, Norman	40, 51, 89	Schiewe, Esther	80
Newby, Oreta Ann	36, 48, 94	Scott, Mrs. Erma B.	14
Newell, Robert	94	Scott, William Shannon	24, 25, 29, 70, 80, 99, 101, 107
Newman, Joyce	89	Seely, James	108
Nichols, Donna	49, 84	Seglem, Laverne	37, 52, 95, 109
Nichols, Raymond	57, 63, 71	Sellers, Grace	14, 47
Nickels, Virginia	44, 45	Sence, Leonard	41, 63, 90
Nolan, Dr. Blaine	14, 28, 64, 65, 107, 111		

PERSONAL INDEX (Concluded)

Servis, Howard	39, 40, 43, 90	Tokuda, Ethel	49, 95
Servis, Lambert	80	Treadway, Dan	90
Seyb, Mary Alice	48, 68, 85, 101, 107	Treadway, Richard	66, 95
Shaff, Mary	49, 64, 69, 85	Tretbar, Harold	39, 40, 51, 95, 111
Shaffer, Earl W.	14, 24, 25, 28, 29, 64, 65, 107, 108, 109, 111	Tucker, Robert	108
Sheets, Wendell	37, 51, 56, 63, 95, 108	Tuckwood, Dorine	23, 27, 49, 90
Sheldon, Esther	36, 43, 44, 47, 48, 90		
Sherman, Keith	52	Underwood, Doyle	90
Sica, Loreto	57, 64, 90	Unruh, Thelma	24, 29, 30, 50, 81
Sidener, Martin	57, 60, 80	Uyesato, Benjamin	51, 63, 71
Skinner, Mrs. Mildred	10, 33, 42		
Smith, Allein	69, 95	Vagner, Joseph	81
Smith, Mrs. Aurora	15, 40	Vagner, LaDelle	29, 85
Smith, Emmet	47, 85	Vangieson, Donald	31, 43, 44, 66, 95
Smith, Linton	40, 71, 85	Vann, Joe	57, 81
Smith, Oreenith	15, 40, 43	Vasey, Charles	85
Smith, Ralph	27, 29, 45, 46, 85	Vasey, Clyde	60, 90, 109, 113
Smith, Wylle	57, 60, 64, 70, 90	Versnel, John	57, 85
Snavely, William	41	Vinsonhaler, C. I.	15, 28
Snyder, Irene	38, 95		
Snyder, Eldon	95	Wade, Donald	22, 26, 31, 33, 85
Snyder, Murrel K.	15, 26, 28, 33	Wade, Miriam	22, 90
Sondel, Donald	31, 33, 37, 43, 90	Wagoner, Kenneth	95
Soong, Harold	29, 52, 60	Wagoner, Warren	81
Spitze, Dr. Leroy A.	15, 41	Ward, Jack	70, 85, 103
Spoon, Howard	57, 89	Ward, Thomas	45, 46, 81
Stamm, Willis	41, 52, 71, 95	Ward, Virginia	36, 43, 44, 45, 47, 48, 90, 101, 102
Stansifer, Charles	22, 23, 29, 43, 66, 71, 95	Warren, David	51, 71, 85
Stansifer, Phillip	41, 71, 80	Warren, Donald	22, 43, 51, 71, 90, 99
Starkey, James	31, 63, 85	Warwick, Margaret	42, 50, 85
Steffen, Arlene	29, 85, 89	Weber, George	25, 29, 31, 32, 40, 47, 51, 85, 113
Stout, Max	85	Webster, Marvin	33, 60, 71, 85
Stowers, Richard	31, 52	Welch, Virgil C.	16
Strobel, Norma	28, 29, 36, 48, 95, 107	Wells, Sharon	39, 52, 95
Stroud, Eldon	85	Wene, Jimmie	37, 57, 90
Stuber, Barbara	22, 23, 27, 68, 90	Whalen, Leo	26, 90
Stuber, Howard	85, 110	Wheeler, Gerald	70, 81
Stuber, Joe	80, 108	Whipple, George C.	15, 31, 64
Stuber, Phyllis	42, 68, 85	White, Donald	37, 46, 51, 95, 108
Subera, Carl	90	White, Herbert	33, 43, 52, 57, 64, 70, 85, 107
Sullivan, Beth Ann	38, 48, 53, 85	Wilcox, Hal	34, 43, 44, 74, 81, 112
Sullivan, Margaret	69, 85	Williams, Bob Jones	31, 39, 85
Sullivan, Rupert	71, 90, 99, 113	Williams, Marilyn	43, 46, 47, 48, 56, 69, 95, 101, 103
Sullivan, Ruth	49, 80	Williams, Ross O.	15, 45, 47
Summers, Ramona	95	Wilson, Lelan	85
Sundbye, Marilee	30, 35, 50, 90	Wilson, Rodrick P.	95
Swafford, John	57, 107	Winters, Shirley	108
		Wolfe, Walter	90
Tanaka, Thomas	37, 52, 91, 95	Woner, Martin	95
Tang, Nola	48, 90	Woods, Jerry	51, 90
Tanji, Barbara	36, 42, 48, 90, 109	Worden, Helen	90
Taylor, Dickie	43, 47, 49, 81	Worden, Raymond	31, 81
Taylor, Patricia	48, 90	Wright, Marjorie	49, 64, 69, 95, 101, 103, 112
Taylor, Richard	81	Wright, Robert	60, 71, 82, 85, 109
Taylor, Rowena	43, 47, 90	Wright, Willard	43, 45, 85
Telfer, Mary Jean	29, 33, 48, 81	Wyckoff, Billy	57, 60
Terry, Barbara	38, 49, 95	Wynn, Elizabeth	38, 43, 44, 46, 47, 95
Thole, Myrna	46, 48, 95	Wynn, John	39, 40, 57, 86, 90, 111
Thomas, John	44, 45, 47, 90, 108		
Thomas, Kenneth	26, 95	Yeager, Robert	41
Thompson, Rosalie	36, 48, 67, 95, 106	Yoder, Janet	35, 36, 43, 44, 45, 47, 68, 90
Throckmorton, Jean	15, 28, 107, 110	Young, Arlyn	41
Thurman, Kenneth	95	Young, John	81
Tiner, James	41, 57, 85	Zimmerman, DeWane	23, 33, 37, 51, 70, 91, 95, 108

SUBSCRIBERS

C. R. Anthony Company, 906 Main	Orr-Crawford Shoe Company, 910 Main
Armour Creameries, 6th and Millington	Parker Brothers, 817 Main
Bloomfield Shoe Co., 924 Main	J. C. Penney Company. 118 East Ninth
C. R. Calvert Co., Inc., 802 Main	Pierce Book Store, 810 Main
Carpenter's Studio, 814½ Main	Sheneman Meat Market, 917 Main
Cunningham Music Company, 113 East Ninth	The Shoe Mart, 920 Main
Drennan Motor Company, 600 Main	Stuber Brothers, 1110 Main
Duggan Motors, Inc., 116-22 West Ninth	Stuber Tractor Implement Company, 1809 Main
Fennema Products, Inc., 114-16 West 11th	Study's, 820 Main
Garrett-Dailey Men's Wear, 819 Main	Thompson Lumber Company, 121 West 8th
M. B. Kerr Company, 112 East Ninth	Warren's Men's Store, 106 East Ninth
Kinard Photography, 106½ East Ninth	Winfield Daily Courier, 201 East Ninth
Marsh's Shoe Store, 911 Main	Winfield Laundry and Cleaners, 612 Main
J. M. McDonald, 721 Main	Winfield Pastry Shop, 1016 Main.

PRINTED BY THE

GRIT PRINTING COMPANY



745 SOUTH EMPORIA
WICHITA, KANSAS

It's a Pleasure . . . TO
PROCESS YOUR PHOTO-ENGRAVINGS
That's No Hay!

Wichita Eagle, Inc.

Artists and Engravers

Wichita 1, Kansas



SOUTHWESTERN COLLEGE LIBRARY