

MOUNDBUILDER '77

Southwestern College



In Kansas

Winfield, Kansas 67156

Volume 66

Editor - Jan Hoffine

**Assistant Editor
Becky O'Neal**

**Faculty Advisor
Mike Wolfe**





Archives
LD
5111
555
M6
1977



Table Of Contents

Administration & Faculty	Page 10
Special Events	Page 30
Involvement	Page 54
Instant Replay	Page 102
People	Page 126
The Beginning	Page 154
Index	Page 166

Another School Year Begins . . .



Preparation for a new year is virtually impossible. The only way to prepare is to get plenty of rest before moving day because it is guaranteed that there won't be much leisure time during the first hectic week. There are boxes and suitcases to unpack, and more boxes to unpack, and boxes, and boxes . . . There are old friends to greet and new friends to meet. Many activities are scheduled to help students and faculty **relax** and get acquainted.

There are books to buy . . . big, long, often expensive, books to purchase. As class enrollments soar over predictions, the race to acquire books becomes frantic. The only comfort in buying the books is knowing



that the bookstore employees **also** had to do some unpacking and shelving.

Registration lines hurt as much as buying that \$30 biology book. The computer facilities produced a new slogan, "hurry up and wait". The lines in the gym were short to be sure, but the line to pay . . . let's go on! The secretaries lightened the waiting with their special T-shirts saying "Don't Bug Me! I'm a Lady". Some students received a math lesson by helping the photographer identify his roll of film. For refreshment there was the Alumni Booth, which revived the poor, tired souls with soft drinks or coffee.



... And The Lines Form

A Tradition Begins

From a speech by Dean Allen, 1927.

"I propose the inauguration of a new college custom, absolutely unique among all the colleges of the world. This ceremony is to be known as 'The Building of the Mound.' Nobody but mound-builders can build mounds. So no other college has now, or is ever likely to have such a custom. It is highly appropriate to Mound-builders, but would have little meaning to others. There is a decided advantage, I think, in having at least one custom that is absolutely distinctive of this institution. So many of our customs are copied, not only by us, but by a thousand other colleges. Such customs, being mere imitations, come to have little significance. But I challenge anyone to point to a college that has anything like what is proposed in the building of the mound.

For many years Southwesterners have been known as 'The Mound-builders.' But this was a mere figure of speech. Literally they built no mounds. But now it is proposed that they actually do so in a solemn ceremony that will at once symbolize the traditional constructive tendencies of the College, and at the same time pledge the loyalty of faculty and students to Alma Mater.

My suggestion is that tonight, at the gloomy hour of nine, every loyal Southwestern student and faculty member come to the foot of the sacred 77. Let every student who is disgruntled and has in his heart no love for his Alma Mater not mar the occasion by his presence. Let every faculty member who has lost the spirit of

youth and has in his make-up no spark of sentiment or sentimentality, if you prefer to call it so, stay at home and go to bed. But let all who love Southwestern and who would not only receive benefits from their Alma Mater, but also contribute something to her greatness-let all such not fail in this solemn hour and sacred ceremony.

Let each come armed in one hand with a candle, torch or other light and in the other hand with a pebble, stone, rock or boulder, on which he has inscribed his name with pencil, chalk, fountain pen, goose-quill, brush, or chisel. Let the college band in full regalia assemble at the same place fifteen minutes before the hour and discourse sweet music-or as sweet as may be considering the rehearsals they have not yet had.

Then at the sound of the cornet, flute, harp, sackbut, psaltery, dulcimer, saxophone and all kinds of musick, let each student and 'Prof.' come forth from his home, domicile, room, sleeping porch, attic, or hole and in solemn mein and orderly array line up behind the aforesaid band. Then as the bell in the steeple strikes nine, let the trumpets sound an advance, let the candles be lit, and let the column proceed, the band playing, the flags waving, over the campus and up the sacra scala-the seventy-seven steps to heaven-and around the north end of Richardson, lights gleaming, eyes sparkling and noses shining.

Onward leading, still proceeding, let the band guide the procession to the hallowed spot where the mound is to be built. Let all gather

close in breathless silence. Let an address be given by some silver-tongued orator on loyalty to Southwestern or some similar theme, let the mound be dedicated, let prayer be offered, let the bugles sound from over the hills, let each student come forward, and instructor too, and, in token of his desire to build his heart and life and spirit into his Alma Mater, press the stone on which he has written his name into the soft cement that shall bind the whole together-not that his rock and name be seen-but that it shall be there, concealed and wrapped up as a token between him and his Alma Mater that they understand one another and are united forever. Then let the tomtoms boom over hill and dale, let all join hands-permitted by special action of the deans for this one occasion only-and let all unite hearts and voices in the singing of 'Alma Mater'. Then let all go home with peace and joy in their hearts that they are a part of our great college.

Let none despise the sweet simplicity of these ceremonies. Who knows what solemn thoughts, what high resolves, may perchance be born that night in the heart of some impressionable freshman or sad-eyed senior facing his last year at Southwestern. Even a cocky sophomore, a world-weary junior or a hard-boiled 'Prof.' might, by a miracle of grace, be regenerated in that hour.

Let this ceremony be repeated every September as the students assemble at Southwestern, each student putting in one stone each year of his attendance and each instructor one for each year of his

teaching here, year after year, 'til the memory shall cease of who suggested the custom or how or when it originated, but still the ceremony shall be carried on and the mound shall grow.

Only this year let there be, as a special feature never to be duplicated, the dedication of this mound. Let there be placed at its base, deeply imbedded in cement, an iron box containing the original of the enacting document, a copy of college catalog, illustrated bulletin, student handbook, Collegian, Moundbuilder, Winfield Courier, of the new absence regulations, a lock of Prexy's hair and whatever else be thought helpful to future generations in understanding the times in which we live, including a penny, a nickel, a cancelled two-cent stamp and a check for one million dollars.

Mayhap in eons yet to come some visitant from the South Sea Island or the planet Mars, sitting on the ruins of Richardson Hall and wondering what strange goings-on were conducted by the long since forgotten inhabitants of this campus, will dig down into the mound and after centuries of effort men may be able to decipher some of the documents herein contained and exclaim: "What fools those mortals were!"

This year the mound will be low and the sum total of our efforts discouraging, as the beginnings always are. But each year, as hundreds and thousands add their contributions to the monumental pile, it will grow with the growth and greatness of the College, and forever be a token of loyalty and devotion, so that visitors to the College will be shown the mound as one of the unique sights of the whole territory around. And when

they ask: "What mean ye be these stones?" they shall each alumnus reply: "Loyalty to Southwestern so long as this mound shall stand! I am in that monument and so is every son and daughter of the College and our hearts and hands are with her to the end." So shall a new spirit be born and lead Southwestern on from strength and from grace to grace.

About this mound, so unique and appropriate a monument to the loyalty of all who have been connected with the institution over a long period of years, shall cluster many sacred memories. Here in days to come students shall assemble to urge on their representatives to grapple with the foe. Here they will gather when the victory shall have been won to celebrate the outcome. Here they shall come to plight their troth 'til death do them part.

As one September succeeds another, with only a few short months between, this pile will be first a foundation, then a mound, then a monument, then a hill, and finally a mountain.

The advantage to the agriculture of Cowley County and finally of Kansas, Oklahoma and Colorado will be obvious. These states will gradually be cleared of stones as the students scour, first the vicinity of the College for stones to do their part in the ceremony and then are compelled to bring stones from their homes or required to send them in with their applications for admission. Another advantage to agriculture will be the condensation of moisture by this mountain, resulting in a plentiful rain-fall for this section as well as rushing mountain torrents which will furnish a purer and cheaper water supply and

abundant power for the factories which will be erected to give work to needy students. Other advantages now loom over the far horizon. "Far" is surely the right word here.

A mountain on our own campus will afford unlimited opportunities for picnics and hikes and for fishing in its streams and lakes as well as for hunting in its unexplored forests. The vision of its snow-capped peaks will be an inspiration to students and faculty alike to set their affections on things above. Cool summer resorts near at home will be a boon to frugal professors and their unfortunate families. The mountain will afford a splendid location for the Southwestern Summer School with escape from the heat of our Southern climate. Thus again will be symbolized the invincible spirit of Southwestern. If the mountain will not come to us-then we will build a mountain of our own.

Some disadvantages are, however, foreseen and perhaps it may be just as well to specify now that cabins be erected at intervals of every few miles to shelter students who get lost in the mountains and to protect them from the storms till rescuing parties can reach them. Who can tell what may be the end of the project we start tonight?

Let us enter into this matter with spirit and with will. Let us remember what Daniel Webster said in his address at the dedication of Bunker Hill Monument: "Man is not made of reason and judgment only but of imagination and sentiment also." Surely that man who has not sentiment in his soul has something lacking. Let tonight be devoted to sentiment, and let that sentiment be loyalty to Southwestern!

The Traditional Trademark Of

The above paper was read at the first regular assembly of the year on Thursday, September 8, 1927. The ceremony proposed was actually carried out, that night, attended by practically all students and professors. Dean Allen presided and put in the first stone, on which Joe Neville, president of the student body, stood to dedicate the mound. The dedicatory prayer was offered by President A. E. Kirk. An unforeseen difficulty arose in the attempt of the vast crowd to put all the stones in at once. Some threw theirs over the heads of others, and Donald Teed, shoveling mortar on the pile, was cut on the head. This first "martyr of the mound" however, had his head bandaged and went on.

The iron box was placed at the bottom of the mound. Professor Poundstone at the last moment suggested that a list of all alumni of the school be included, and this was done, so that now all students of Southwestern from the beginning to the present time have their names in the mound. A mound three feet high and perhaps nine in diameter was the result of the first year's building.

And time passed. The immutable, fine sands of seconds seeped through the hour glass of time one by one and time passed. Each year the stones were added and the mound grew. The fictitious call for tradition ripened into a cherished ritual. Once each year the mound became the mecca of fledgling and veteran Builders — emblazoned in glory and for the moment the holy of holies. Each bright ceremonial night was followed by the cold grey dawn of neglect. The Mound seldom served as a trysting spot for plighted troths; nor the background for victorious celebrations; nor the arena for inspirational assemblies. Brambles and briars block the inquisitive visitor, and only the field mouse sought the shelter of the mound, a far cry from the way-station sanctuary envisioned by Dean Allen.

Then too, the sound of "cornet, flute, harp, sackbut, psalter, dulcimer and saxophone" called for by the ceremony of the Building of the Mound, requires the vigilant application of the coronetist, the flutist, the harpist, the sackbutist, the psalterist, the dulcimerist and the saxaphonist. The

same sands of time that fixed the ceremony into a meaningful tradition eroded the very walls, studing, beams and roof of the quaint and archaic G. I. colonial home of the fine artists, as it had obscured the symbolic mound.

Change seemed inevitable. Conferences were held. Bold action was proposed. A new Fine Arts Complex was to be raised and on the very spot where the mound mournfully reminisced over what it might of been. "But do we dare lay rude hands on such a sacred pile? To disturb the revered prexy's locks and the dean's check would be as to do violence to the casket of a loved one." These and other awe filling thoughts flickered with their awful portent through the minds of those who planned.

But the dead hand of the past must not thwart the march of progress. The mound must be moved. Sweet "Musick" must be heard throughout the land. We are



Southwestern College — "The Mound"

builders. We literally build mounds, and building requires destruction. The rock from which the Greek artist carved "Winged Victory" was torn from its first and natural setting. Even the Taj Mahal was once picturesquely scattered about the four corners of India. The mound could be rebuilt. We will move our mountain to the lower campus! Even if it means that the lower campus may become the upper campus. From the foundation of the old will rise the new.

And such a mountain as Dean Allen never dreamed, will spring from the new. Indeed, it will grow on the lower campus in a conspicuous spot, bathed in the soft glow by night, rimmed by bronze plaque and marble bench by day — clearly evident to all who pass by, that here — at the heart of our College — we reveal — we glorify — we proclaim — we visually symbolize that we are builders.

And the mountain will grow — overlapping and finally encasing the Library, Mossman Hall, the President's residence and the dormitories. Subterranean pas-

sages, equipped with escalators, will serve as connectional arteries for the college facilities miles beneath its forested and snow-capped peaks. While in those blissful carefree days of Dean Allen, thoughts were of peaceful vacationland and bountiful crops; our concern in the perilous 1962 is that this shield of rock will eventually protect the future builder from Hydrogen bursts, and deadly fall out. As Dean, I envision silo-type launching pads, extending into the core of the mountain for the space craft of a later year. Academically we will not boast of a Washington Semester nor a Junior year abroad, but rather of a Saturn Semester, and a Junior year aloft. The physics department will be in charge of the atomic reactors, producing power, biologists will continue their experimentation with artificial life-giving light and fertilizers, and the maintenance crew will with vigilant care regulate the air purification system in the same thorough manner as they now maintain uniform heat throughout the buildings. The campus will become a self-contained unit, and as spasmodic wars range overhead, the quiet struggle for knowledge,

wisdom and grace will pulsate the Mound's protective covering. In the occasional lulls between onslaughts, the Builder scholars will venture forth (properly protected from the deadly air) and climb the 77,777 steps, and look out over the devastated countryside and call we who build here tonight — blessed among men.

But seriously, the symbol of the mound will not change with the relocation of the site. Each age must rearrange its values and rebuild its principles. That which endures from the old is a solid foundation on which to build even as the rocks and stones of the class of 1927 and 1937 rest here as a firm foundation. We once again cement a new bond with our heritage. And from the union will rise a new and more disciplined symbol of the Builder spirit.

Loyalty to Southwestern need not be altered by erecting new symbols. The uniqueness of our constructive spirit; the dedication of our lives to "knowledge, hope and courage"; the honor we pay our Alma Mater transcends the stones we lay on this mound. In rededicating this mound we also rededicate our lives to loyalty to our college; the improved welfare of our fellow men; and the greater glory of God.

From a speech by Dean C. Robert Haywood, September 12, 1962.





ADMINISTRATION
& FACULTY



Board Of Trustees

Members of the Board are: Ron Williams, J.J. Banks, Maxine Leftwich, Forrest J. Robinson, Orlan Mullen, Darwin Wells, Richard Wilke, Don Ruthenberg, Clark Moots, William Shuler, Ralph Thorne, Clarence Borger, Roy E. Smith, Melvin Short, George Templar, Byron Waite, Jim Fishback, Robert Docking, Paul Matthaei, Kern Gordon, Lyle Glenn, Kenneth Hiebsch, Joe Riley Burns, Ward Cole, Jay Pounds, Harold Kieler, Chester Osborn, Ron Scheffler, Jack Harris, Frankie Toevs, Kim Moore, Dave Matthews, Joyce Boone, Bruce Blake, Robert Wimmer. Not pictured: George McNeish, Don Anderson, Olive Ann Beech, Dodd Demas, Ernest Dixon, Jr., E. Dale Dunlap, Joe Everly, Marguerite Hessini, J.H. Johnson, W.W. Keith, Willard Kiser, Duane McGill, Glenn Milburn, Harold Nelson, R.H. Pierce, John Rickard, Will Wright, William Broadhurst, Arthur Smith, Pat Wallingford.



Don Ruthenberg

President of the College





Hamby Barton

Dean of the College



Fran Broadhurst

Acting Dean of Students



Rich Dunfee

Dean of Students



Ralph Decker

Assistant to the Dean



Dorothy Bernard

Career Planning



Gary Roberts

Assistant Dean of Students



Earl Spidel

Business Manager



Viola Schwantes

Comptroller



Barbara Shively

Financial Aid



Roland Elliott

Registrar



Howard Stephens

Community-College Relations



Lewis Gilbreath

Director of Admissions



Clara Embrey

Development



Byron Moore

Cooperating Winfield Colleges

Maija Wilgers

News Bureau



Tom Wallrabenstein

Associate Director of Development



Bill Flaming

Director of Development





Phil Schmidt

Social Science Division Chairman



Wallace Gray

Philosophy



John Shoemaker

Political Science



Larry Wilgers

History



John Paulin

Chaplain of the College



Jane Flavin

Education

Dan Nutter

Librarian



Dick Valyer

Education



Ed Foster

Education



Don Anderson

Psychology



Richard Evans

Religion



Ed Salm

Sociology and Archaeology



Mike Wolfe

Economics



Pat Doyle

Accounting



Charles Bright

Business

Dick Barnes

Economics



Don Blatchley

Computer Science

**NO PHOTO
AVAILABLE**



Warren Soble

Management Science



Jim Strand

Music

Ross Williams

Music

Richard Bobo

Fine Arts Division Chairman



Warren Wooldridge

Music

Jana Bobo

Music

Wayne Tucker

Music



Warren Brown

Art

Mike Trollman

Music

Helen Wroten

Language and Literature Division Chairman

Alfredo Rodriguez

Spanish and Latin-American Studies



Judy Charlton

English and African Studies



Dan Daniel

English

A. D. Cope

English





Marguerite Hessini

French



Gary Horn

Forensics and Speech

Troy Boucher

English



Gleva Hanson

Speech



Norman Callison

Speech and Drama

Manly Huber

Physics and Mathematics



Orland Kolling

Chemistry



Bob Wimmer

Natural Science Division Chairman



Charlie Hunter

Biology



Max Thompson

Biology





Lee Dubowsky

Mathematics



Phyllis Johnson

Nutrition



Leonard Laws

Mathematics



Kathy Spearow

Home Economics



Larry Smith

Bio-Chemistry



Bill Stephens

Athletic Director

Jim Paramore

Physical Education



Kathy ReQua

Physical Education



Duane Rankin

Physical Education



Monty Drennon

Admissions

Mike Hostetler

Admissions

Tom Graber

Admissions



Keith Starry

ARA Manager



ARA Staff

STANDING: Tom DeRuggiero, Keith Starry, Lyle Weinert. **SITTING:** Margaret Scott, Mary Bateman, Louise Scott, Marvel Crawford, Sheryl Crawford, Bernetta Berndsen, Jessie Fruits, Pearl Ewert, Lou Tharp, and Joe Rebold.





Secretaries

BACK ROW: Vivian Lawrence, Virgene Davis, Betty Hamm, Kathy Hickman, Irene Watson, Shirley Harmes, Janette Brasher, Norma Carlson, Leona Glenn, Annie Hardin, Jan Kindt, Norma Cox, Judy Sutton, Nancy Talbert. **FRONT ROW:** Sarah Jo Sympson, Janelle Moon, Ruth Archambeau, Louise Wesley, Sondra Groene, Myrna Conrod, Yvonne Shrader, Myrtle Ingerson, Judy Williams. **NOT PICTURED:** Charlotte McCauley, Jennie Starry.



Maintenance

STANDING: Walt Flippo, Raymond McGinnis, Mary Jobe, Tom Luton, Annie Hardin, Bud Henderson, Millie Kliever, Jeff Crow, Elsie Goodnight, Frank Carr, Brenda Palmer, Rodney Palmer, Walter Allen, Gene Bonham. **SITTING:** Phillip Brown, Arlin Ward, Wilma Topper, Marge Flippo, Alice Markley, Lorine McMillan, Clarence Widner. **NOT PICTURED:** Vicki Phillips, Mildred Evans, Paul Evans, Julie Diaz, Paul Dimit.



Kay Newton

Bookstore



Annetta Hanna

Bookstore



Hostess Office

Brian Downey and Roger Moon play cards below. Others include Joann Downey, Allyson Moon, and Ginny Evans.



JoAnn Mazzanti

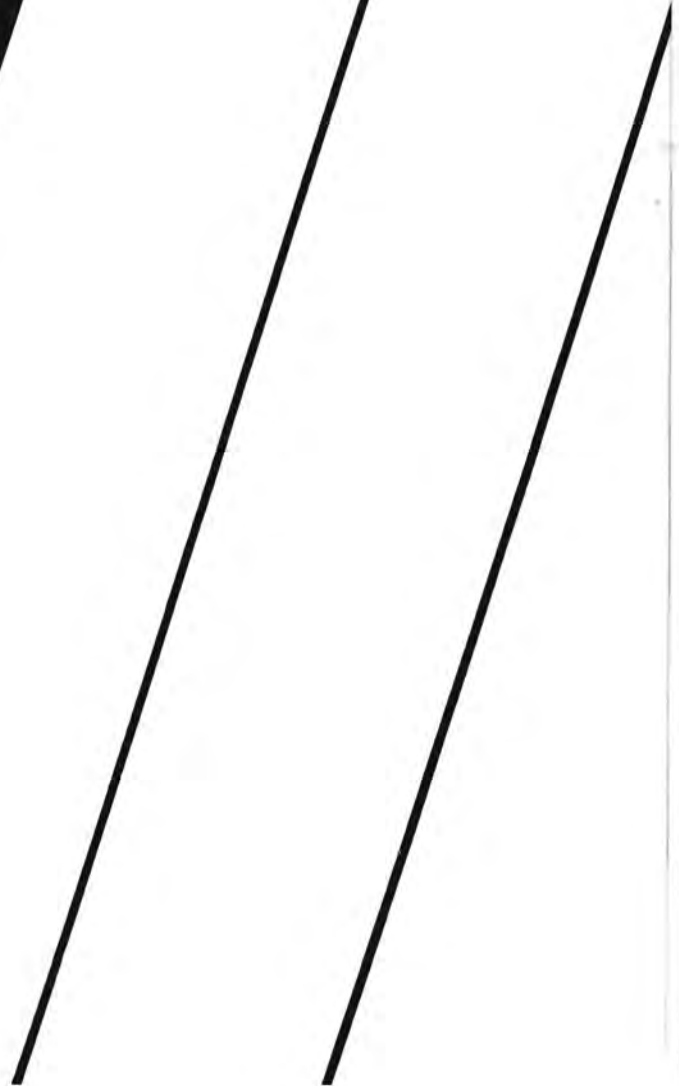
Nurse

Gene Bonham

Head of Maintenance



SPECIAL EVENTS





From Washington To Canada To Rome — Builders Study Around The World

The Washington trip proved to be a great experience for everyone involved — despite freezing temperatures. Their itinerary included seminars on current national issues as well as waiting in the snow for three hours to witness the inauguration.

The group at right, led by Don Anderson with students Beth Anderson, Deb Brennan, Virgil Brooks, Tim Butler, Cindy Gropper, Jim Heck, Warren Heinen, Susan Hickok, Brian Hobbs, and Glenn McFall participating, spent January focusing on Canada with about two weeks spent in Canada.

Other Builders spent the month in Rome, at Olathe School for the Deaf, skiing in Colorado, debating across the nation, and in Winfield.



As John Paulin was in Colorado with the See, Ski, and Be class, the chaplaincy was filled by former student, Rick Hatfield, now in seminary. Having a chaplain intern was a new experience at SC, but one which may be continued in the future as it proved satisfactory. At right, Ron Van Sickle and Rick chat.

AT LEFT, those going to Washington, D.C. were Phil Schmidt, Dan Daniel, Darlene Adkins, Jerry Barnes, Dana Basinger, Diana Bonar, John Cartwright, Mary Coon, Betty Coon, Peggy Craig, Kathy Dible, Kathryn Gossett, LuAnn Howard, Kay Kingdon, Marilyn Magnusson, Becky O'Neal, Steve Phillips, Jane Randall, Donna Wacker, Jon Wooldridge, Judy Burris, and Waynette Schoch.



There were two trips to Florida this January. Biologists under the direction of Bob Wimmer and Max Thompson studied tropical ecology, doing some skin diving. Ten elementary education majors joined Ed Foster in hunting sea shells and other items for their elementary learning packages. Both groups were disappointed as they had anticipated warm, sunny weather. The biology group, camping out at night, felt the cold most keenly. The two groups joined forces for an assault on Disneyworld. At right, Diana, Tom, and Micky sort shells they collected. Below, students from both groups consult Wimmer and Thompson on a beach.





Novelty Abounded

January term offered a wide variety of classes from which to choose. Many novel classes were available and students took advantage of these opportunities. Dr. Ruthenberg supervised 20 students who rebuilt antique airplanes below Stewart Gym. Men and women not only built planes together, but also cooked together in Phyllis Johnson's course on foreign and fancy foods. Mrs. Kolling taught basket weaving. Dr. Laws shared his knowledge and experience in building, buying, and remodeling a home with 46 students. One could creatively sew or "non-sew". Kathy ReQua worked with students who learned about dance. Classes in speed reading, bird watching, astronomy, trigonometry, economics, English "open" schools, Kansas history, military history, German, small group communication, literature, and meditation were also taught. Off-campus opportunities included Rome, Canada, New Mexico, Florida, and Colorado. Internships were also available.



Cook, THEN Eat

FAR LEFT: Southwestern students found Washington a cold place to be. **UPPER CENTER:** Stephanie Kesler became quite handy at putting planes together. **LOWER CENTER:** Candy Hackathorn went "nuts" over her interterm class. **LEFT:** Chrystal Partin seems to enjoy cooking. **BELOW:** Craig and D'aun stir away, but we suspect Craig is more interested in eating than in cooking.

In addition to regular January term courses, students on campus had the opportunity to participate in free university courses offered through a student council sponsored program. These classes were frequently taught by students and greatly enhanced the interterm this year by providing more activities. Free university courses included crewel & needlepoint, knitting & crocheting, painting, exercise & aquatic exercise, maj jong, chess, guitar, and clobber Dr. Gray in ping pong.

With plenty of snow, sledding down the hill and ice skating were favorite recreational activities. Snowball fights and snowmen were also prominent.



Communication

At left, the students in Gleva Hanson's "Small Group Communications" class studied cross-cultural communication through active experiences. The students were Kim Detter, Sheryl Evans, Sharon Kanitz, Ron Denton, Marsha Roe, Harleen Santos, Brenda Bailey, Debra O'Neal and Lena Roy.

Debaters at Southwestern had a very successful Jan Term. They were able to travel to many tournaments around the midwest during the month. One of their most successful efforts was on a sweep down south in Texas. The squad took both first and second places at two tournaments. Individual members also took many honors.



Crafts

AT RIGHT, Kathy Spearow shows Sulinda Baker how various traditional sewing, applique, patchwork, and quilting techniques can be used on innovative projects in her "Creative "Non-Sewing" Using the Sewing Machine" class.

BELOW, Mrs. Esther Kolling instructs a student on various basket weaving designs and techniques.

Leonard Laws' "Building, Buying or Remodeling a House" class had the advantage of hearing professional people from the community. These included a realtor, architect, contractor, and lawyer, as well as many other experts.



Homecoming '76



Homecoming Queen candidates were **FROM LEFT TO RIGHT:** Rosemary Cherry, Waynette Schoch, Sonja Makoski, Diane Cook, Beth Miller.



Students helped build their respective organizations' floats. Joe Forest concentrated on making the Reid Hall "Jaws" float sturdy while Connie Feste helped stuff the Sutton Hall float.

"The Jinx Goes To Hollywood"



This year's Homecoming theme, "The Jinx Goes to Hollywood," created much enthusiasm and involvement on campus. Activities included a Friday night dance, IPO's "Ugly Man on Campus" contest and an evening concert by Woody Herman. Many people and organizations were active in the traditional parade. Sophomore Beth Miller was crowned Homecoming Queen. Mr. J. D. Ewan, a '23 graduate, entertained the crowd at the game with his cheerleading abilities. The Jinx (Vi-Jay Sherring) chased a Tabor Blue-jay (Bob DeVore) around the sidelines. The highlight of the day came as the Builders defeated Tabor.



TOP LEFT: Beth Miller was crowned queen by Lillian Garibay as Beth's escort, Tom Fell, looked on.

LEFT: Student Council was responsible for serving lunch to the visiting bands. Anne Williams, Diana Neely, and Esther Wilson helped dish up the sloppy joes.

ABOVE: Susan Finney looked on as J. D. Ewan, '23, led the crowd in a cheer.

Broadhurst Wins Float Contest



Broadhurst Hall won the float contest with a gunfight in the "Jinx O. K. Corral". Reid Hall's float is **PICTURED AT LEFT**. SSEA members constructed a sailboat for their float.



Bob DeVore made a lively bluejay as students, led by ViJay Sherring as the Jinx, chased him with sticks. Wayne King is pictured with the bluejay and Jinx **ABOVE**.

Woody Herman Performs In Evening



Music was plentiful for homecoming, October 9. Twenty-seven bands marched in the morning parade with most of them also participating in a halftime show directed by Mr. Wayne Tucker, SC band instructor. The bands cheered the Builders on to victory throughout the game with periodic fight songs. The Woody Herman band held a workshop in the afternoon and gave an evening performance in the Winfield High School gymnasium.



"Ribbs" Renner Wins UGLY MAN

Iota Pi Omega sponsored its annual "Ugly Man on Campus" Contest in conjunction with the Homecoming festivities. Jars placed in the cafeteria were used to collect votes, with one penny being worth one vote. This year there were ten candidates representing many different campus organizations. Students selected Theta candidate, Steve "Ribbs" Renner, as the ugliest man on campus. Other candidates were Phil Archer, Dave Nichols, Gary Roberts, Wayne King, Jim Fishback, Larry Schneckenburger, Paul Lewis, John Hutchison, and Larry Kedigh.





Fall Cultural Arts Events Centered



The DeCormier Singers were on campus first semester and gave a musical review of Bicentennial songs. The group makes an annual coast-to-coast tour of the United States and Canada, often stopping at college campuses. Robert DeCormier, the founder of the group, has made his mark as a composer, arranger, and conductor. He was the choral director for the Ed Sullivan Show and was conductor and arranger for Harry Belafonte. The Singers presented a program entitled "Folk Song, U.S.A." The presentation related our traditional song literature to our history.

Woody Herman appeared on campus to give a concert in conjunction with the Homecoming festivities. Herman became a jazz legend back in the 40's with his colossal smash "Wood-chopper's Ball." Today he has kept his big band sound but continues to explore new possibilities in sound and style. After the victorious Homecoming game, Herman gave a band clinic for visiting high school band members and other interested people before his great concert that night. At upper right, Woody Herman does what comes naturally, playing jazz.



Around Instrumental And Vocal Music



The sixteen voice Denison Singers from Denison University, Granville, Ohio, gave a concert in Richardson Hall to entertain the folks that stayed here for Jan Term. The group included Southwestern in their twenty concert tour of the Midwest, singing a range of modern to classical songs in their repertoire. The group went on tour in Europe twice, singing in France, Germany, Austria, Switzerland, Italy, Czechoslovakia, and Rumania.



"The House Of Blue Leaves"

THE HOUSE OF BLUE LEAVES

By John Guarre

Directed by Norman Callison

Artie Shaugnessy	David Herrin
Bunny	Barbara Meier
Bananas	Linda Voth
Corina	Linda Nixon
Ronnie	Alan Daymude
Head Nun	Cindy Wesley
Nun	Dee Ann Wills
Little Nun	Anne Goering
Man in White	Jim Maxton
M.P.'s	Darrel Dees
	Randy Juden
Billy Einhorn	Jason Kenyon
Stage manager	Ellen Pederson



Thornton Wilder Plays Presented



CHILDHOOD

Mother	Cindy Wesley
Father	Steve Ruzich
Children	Diane MacNair
	Anne Cook
	Randy Juden

THE LONG CHRISTMAS DINNER

Mother Bayard	Mary Green
Leanora Bayard	Diane MacNair
Roderick Bayard, Sr.	Randy Juden
Lucia	Dee Ann Wills
Little Lucia	Dee Ann Wills
Roderick, Jr.	Randy Juden
Cousin Brandon	Stephen Ruzich
Genevieve	Mary Green
Ermengarde	Cindy Wesley
Leanora's Husband	Craig Ussery
Directed by Allyson Moon	



Annual Christmas Play Performed



EAGERHEART

Eagerheart	Allyson Moon
Eagerfame	Barb Meier
Eagersense	Mary Green
Love	John Beck
Wisdom	Alan Daymude
Power	Steve Ruzich
Man	Brian Downey
Old Shepherd	Carol Blanchard
Young Shepherd	Jan Kraus
First Shepherd	Cindy Wesley
Second Shepherd	Claire Casselman
Prologue	Jennifer Warner
Acolytes and Angels	Jim Williams
	Linda Nixon
	Dee Ann Wills
Sound	Jason Kenyon
Lights	Craig Ussery



"The Streets Of New York"



THE STREETS OF NEW YORK

By Dion Boucicault

Directed by Jane Rhoads and Norman Callison

Captain Fairweather	John Beck
Gideon Bloodgood	Bill Usher
Badger	Mike Borchert
Mark Livingston	Mike Marion
Paul Fairweather	Randy Juden
Puffy	David Herrin
Dan Puffy	Darrel Dees
Edwards	Craig Ussery
Mrs. Fairweather	Debra Crawford
Mrs. Puffy	Claire Casselman
Alida Bloodgood	Ruth Brockemeier
Lucy Fairweather	Cindy Wesley
Policemen	Tom Rahe
	Mike Fell

The Duke of Calcavella Alan Daymude

The Poor and Rich

of New York Jan Kraus

Anne Goering

Linda Nixon

Susan Becker

Carol Swander

Designed by Alan Daymude

Student directed by John Beck

"The Death Of A Salesman"

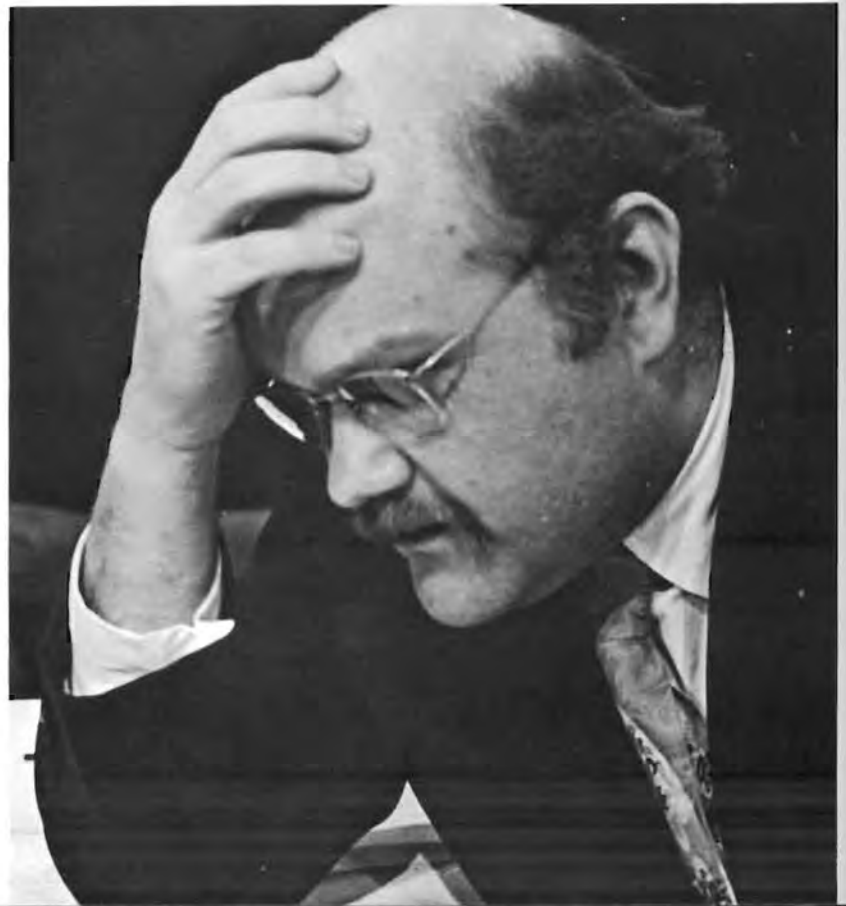


THE DEATH OF A SALESMAN

By Arthur Miller

Directed by Roger Moon

Willy Loman	Norman Callison
Linda	Roxy Callison
Biff	Steve Short
Happy	Randy Juden
Bernard	David Seibel
Ben	David Herrin
Howard	Craig Ussery
Charlie	John Beck
Miss Forsthe	Joann Downey
Letta	Barb Meier
Jenny	Janet Barr
Woman	Mary Green



"Twelfth Night" By Shakespeare



TWELFTH NIGHT By William Shakespeare Directed by Norman Callison

Orsino	Deb Park
Valentine	Denise Shay
Curio	Dee Ann Wills
Sir Toby Belch	John Beck
Sir Andrew Aguecheek	Craig Ussery
Fabian	Claire Casselman
Olivia	Mary Green
Feste	Mike Marion
Viola	Allyson Moon
Sebastian	Alan Daymude
Antonio	Mike Burnett
Maria	Cindy Wesley
Sea Captain	Bill Peterson
Priest	Stephanie Kesler
Officer	Darrel Dees
Attendants	Joann Downey
	Darlene Adkins
	Jan Kraus
Student Director	Randy Juden
Costumer	Annette Nethery
Designer	Penny Penniger
Lights	Craig Ussery

"You Make Me Feel Like Dancing"

The 1977 King Spice Dance, sponsored by Gamma Omicron, was held on Saturday, March 26. "You Make Me Feel Like Dancing" was selected as the theme for the annual dance. The Student Activities Association helped out by providing the band, a group called Axis from Wichita.

Traditionally, the King Spice Dance is semi-formal with the women asking the men. The highlight of the dance was the crowning of King Spice. Each candidate received a pot holder, the first and second runners-up received aprons, and King Spice was crowned with a chef's hat, apron and banner.

Eleven organizations nominated candidates and the student body voted to select King Spice 1977. For the second year in a row Campus Life nominated the winning candidate. ViJay Sherring was elected King Spice. Theta Phi Delta nominee, Greg Unruh, was selected first runner-up. Ralph Hanna, nominated by Wallingford Hall, was second runner-up. Other candidates were Rex Davison, Gamma Omicron; Randy Nittler, Beta Rho Mu; Steve Short, Cheerleaders; Ron Denton, Sutton; Ike Brady, Iota Pi Omega; Cesar Garces, Mu Phi Epsilon; Mike Atakpa, Black Student Union; and Phil Bachus, Campus Players.

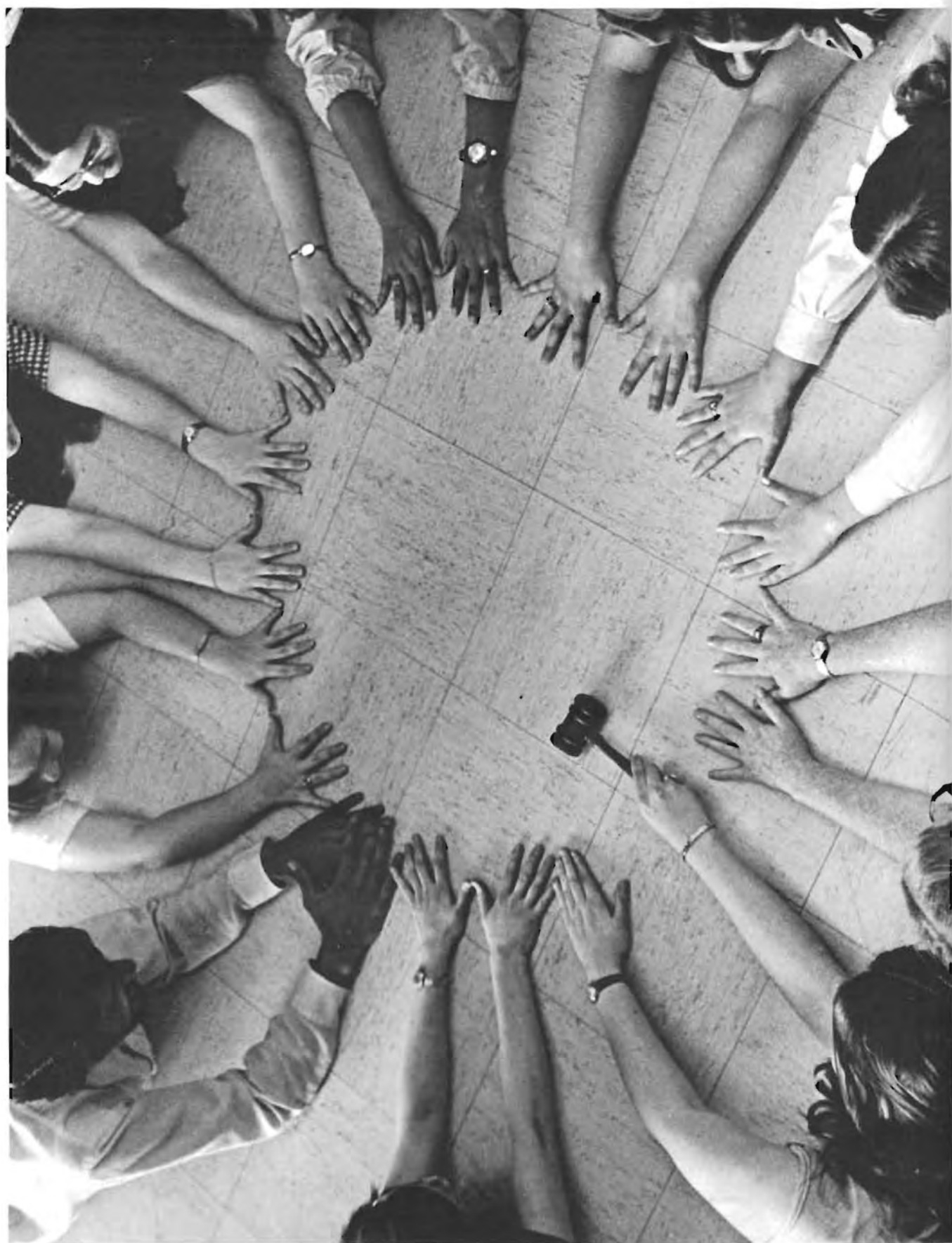


ViJay Sherring, a junior math major from India, was elected 1977 King Spice by his fellow students. ViJay was escorted by Mary Coon. First runner-up, Greg Unruh, is a senior bio-chemistry major from Ottawa, Kansas. He was escorted by Becky O'Neal. Carol Thorne escorted the second runner-up, Ralph Hanna. Ralph, a junior from Winfield, Kansas, is majoring in business.

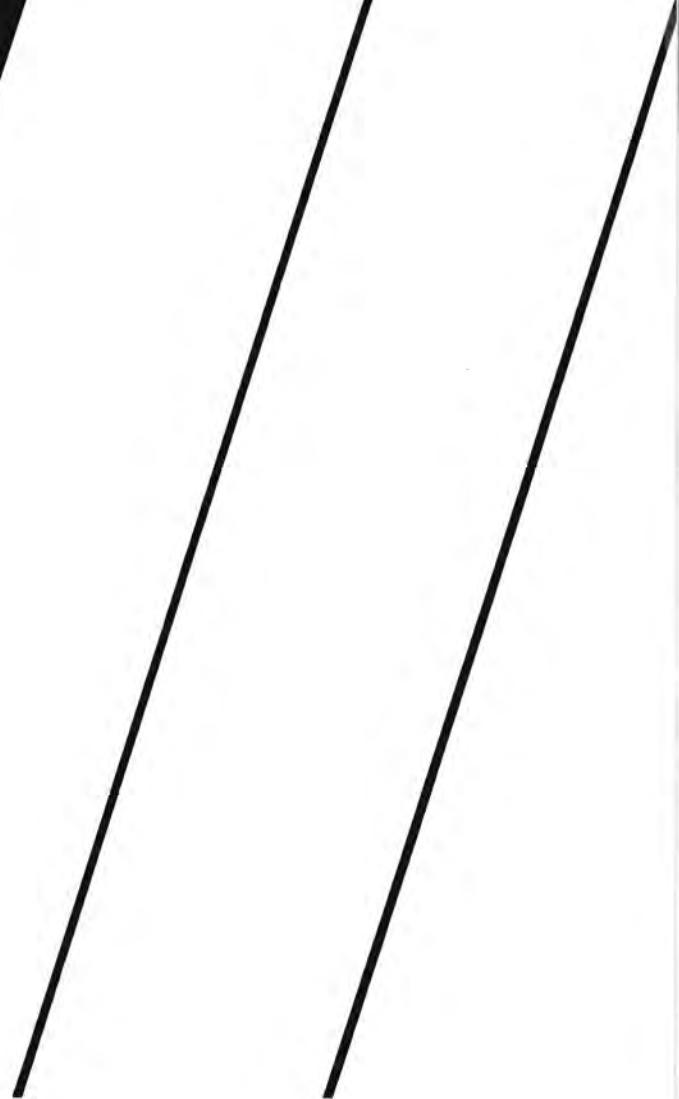
ABOVE: Mary gives ViJay a congratulatory kiss. **UPPER RIGHT:** Ralph and Greg shake hands with King ViJay. **LOWER RIGHT:** The top three candidates are shown with their escorts.

ViJay Sherring Crowned King Spice 1977





INVOLVEMENT



Student Council, SAA Active

The Student Activities Association, more commonly called SAA, was very busy throughout the year planning and sponsoring events for the students. Jim Morgan, SAA President and Vice-President Brian Hobbs worked very hard to be sure all the movies were shown on time and the dances went smoothly. A record breaking number of movies were shown on campus during the year, including such "biggies" as "The Way We Were" and hilarious Mel Brooks films.

RIGHT: Members of the SAA Board were Brian Hobbs, Jim Morgan, Dee Ann Wills, Anne Goering, Bob Marsh, Gary Roberts, Craig Ussery, and Becky Schroll.



RIGHT: Student Council President Jim Fishback.



Student Council was kept busy this year under the leadership of President Jim Fishback and Vice-President Lyle Weinert. The biggest project the council dealt with was the question of a constitution. It was decided that a new one should be drawn up and the huge task fell on the shoulders of Lyle Weinert, who did a very good job. The final constitution changed Student Council to the Student Government Associ-

ation and redefined the powers the group would hold. In a student body vote in the spring the new constitution passed by an overwhelming majority and awaited faculty action in the fall of '77. Student Council members were also leaders in change as they helped support a free university during January and a new "humanities by air" project in the spring.

SBA Members Busy On The Air



ABOVE: Members of the Southwestern Broadcasting Association included Glenn Fogelberg, Randy Duncan, Greg Warner, Tim McCullouch, Randy Rothe, Kevin Hartley, Jon Wooldridge, Connie Feste, Kody Kearns, Terry Gaiser, Anne Goering, Randy Reusser, Steve Mayo, and Cozy Crawford. **NOT PICTURED:** Rob Bagot, Jason Kenyon, Tonya Beckham, Bill Rinkenbaugh, Mike Marion, Dan Dible, Bill Peterson, Karen Mogab, Craig Ussery, Steve Ruzich, Claire Casselman, Gene Williams, Tom King, Rex Johnson, Jim Williams, Bonnie Barnett, John Halverstadt, and Jennifer Warner. Sponsors were Wallace Gray, Troy Boucher, and Veda Rogers. **LEFT:** Connie Feste and Kevin Hartley set up the mike to broadcast a chapel service. SBA also helped with a pilot humanities by air program.

Collegian Covers Issues, Events



This year the Collegian strove to become more issue-oriented without sacrificing publicity-type coverage and to increase student readership of the newspaper. It regularly examined committees on campus and studied some academic departments of the college. Other major stories it printed were the problems of meeting federal fire codes, the decline in the number of classes taught on campus, and vandalism and theft in the dormitories.

LEFT: Working on issue's layout are editor Brad Rymph and assistant editor Toni Jo Gray.

BELOW: Collegian staff members included Mary Green, Joe Ramsey, Sherry Wadleigh, Carol Moore, Emmanuel Peters, Doug Gilbert, Rex Davison, Jim Williams, John Beck, Eric Andreas, and Steve Mayo. Not pictured were Pam Boyer, Mary Boyle, Tim Doty, Ellen Graeser, John Halverstadt, Annette Nethery, and Judy White.



Moundbuilder Staff Cuts, Pastes

Members of the **Moundbuilder '77** staff were Jan Hoffine - editor, Becky O'Neal - assistant editor, Pat Barker, and Darlene Adkins. First semester staff members included Terry Dennis, Diana Neely, and Judy White. Second semester staff included Joy Lewis, Chris Reimer, Laurie White, and Dee Ann Wills. Rex Davison, Jim Fishback, and Jim Williams were part-time photographers.

Despite many difficulties and setbacks, the staff worked late to complete deadlines on time. Producing this yearbook was a terrific learning experience for members of the staff.



Members Of Service Organizations



S - Club



Any student who letters in a varsity sport on campus is eligible to join S-Club. Sports include football, basketball, cross country, track, swimming, golf and tennis. One of their annual projects has been running the concession stand during football and basketball games.

ABOVE: Members of the S-Club included Craig Hartman, Brad Turner, Louis Mignone, Jim Fishback, Esther Wilson, Glenn McFall, Trent Weaver, Mike Burnett and Vicki Raines.

Circle K



Circle K is an organization on campus that encourages college students to help others and serve society. It is associated with the Kiwanis Club. To be eligible for membership, a student must meet the minimum scholastic and attendance standards of the college and must attend 60% of the scheduled meetings of the club. Members of Circle K were Mary Green, president; Larry Kedigh, vice-president, Grant Wencel, secretary-treasurer; Darlene Adkins, Barb Meier, Terry Canuto, Steve Short, Lynn Dyke, Lonnie Mills, Margie Myers and Darrel Dees.

Work Together To Improve



ABOVE: Campus Life members included Janis Matthew, Karen Rymph, Mary Coon, Warren Heinen, Curt Hartman, John Paulin, Dan Dible, Betty Coon, Connie Feste, Kendal Utt, Craig Hartman, and Rex Johnson.



Connie Feste was president of Campus Life, Warren Heinen was vice-president, and Dan Dible was program director. FCA, the Fellowship for Christian Athletes, was open to all students who wanted to join. The group was divided into smaller "huddle" groups which met outside the regular organization meeting time.

UPPER LEFT: To introduce new students to FCA and illustrate the variety of people involved FCA members put on a short skit. ViJay Sherring represented a football player; Craig Hartman, a cheerleader; Bonnie Bergdall, a basketball player; and Jim Carlson, a very studious student.



LOWER LEFT: Larry Burnett, Esther Wilson, Joe Schrag, Becky Decker, Jim Morgan, Rob Houser, and Carol Thorne have a huddle group meeting.

Students Share Cultures With Others

International students:

STANDING: Emmanuel Peters, Elizabeth Kolling, Ali Abdollahpour, Gleva Hanson, Cesar Garces, Bob Eagleson, Lillian Garibay, Lizzy Engelen. **SITTING:** Efffiong Okokon, Yutaka Shinozaki, Vineeta Sherring, Christiana Okokon, Anne Williams, Doris Phipps, Dora Ebong, and Melody Tennial.



Indian Students: Ed Foster, Terry Canuto, Lena Roy, Judie Yazzie, Linda Sherman, Cecelia Charles. **Not Pictured:** Leonard Murphy, Ernest Laughter, and Lauren Bernally.

The All-Indian Student Association sponsored an All-Indian Day on April 27. Displays were set up, fry bread was sold, and special Indian dinners were served. These students did a great deal of work to share their culture with the Southwestern College Community.



Black Student Union Sponsors Many Activities

Black Awareness Week was the main event sponsored by the Black Student Union and proved informative to many students. During the week the BSU put on many programs, guest speakers, crowned a Mr., Ms. Black Heritage and held a benefit basketball game against the KAKE All-Stars.

TOP, the royalty elected were Donnie Davison, Nathaniel Walker and Karen Nash.

BELOW, members of the Black Student Union were Mike Atakpa, Nathaniel Walker, Bob Nash, Jerry Barnes, Ukeme Umana, Cozy Crawford, Karen Nash, Laura Fulcher, and sponsor Alfredo Rodriguez.



Cheerleaders

The Varsity cheerleaders re-established an old tradition this past year by having five males join them in their efforts to promote school spirit. With the help of the men the cheerleaders were able to perform fantastic stunts and acrobatic maneuvers. The teams appreciated their support.

AT RIGHT FROM TOP TO BOTTOM are the Junior Varsity cheerleaders: Chrystal Partin, Vineeta Sherring, Susan Reed (head), and Janelle Dreier.

BELOW: the Varsity cheerleaders were Grant Wencel, Diane MacNair, Tim Detter, Susan Finney, Marilyn Magnusson, Kelly Siefkes, Lisa Temple (head), Joe Forest, Waynette Schoch, and Steve Short.



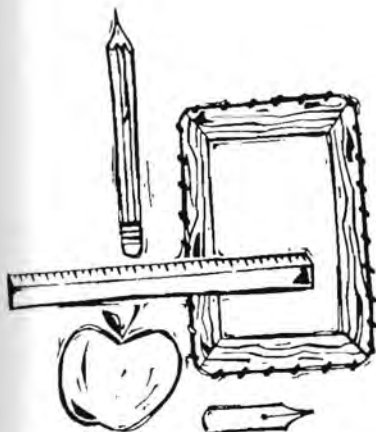
SSEA Promotes Quality Education



ABOVE: SSEA's homecoming float was driven by Keith Graham. Priscilla Jones, Pam King, and Dana Wanzer held letters identifying the organization. Pirate Lonnie Mills was prepared to attack if the Tabor Bluejay, portrayed by Bob DeVore, attempted to board ship.

The purpose of the Southwestern Student Education Association is to develop in prospective educators an understanding of the education profession, to provide for a united student voice for students in education in matters affecting their profession, to influence the conditions under which prospective educators are prepared, to advance the interests and welfare of students preparing for a career in education, to forward the aim of quality education, to promote and protect human and civil rights, and to stimulate the highest ideals of professional ethics, standards, and attitudes.

Keith Graham served as president of SSEA this year, Pam King was vice-president, and Lonnie Mills was secretary-treasurer. Lonnie also served on the State Executive Board as Associate Vice-President of Region #3. Dr. Jane Flavin was advisor of the group.



Phi Beta Lambda - A Going Concern



Phi Beta Lambda helps business majors develop their abilities in all aspects of business. Members sell programs at athletic events, attend state convention, and have the opportunity to hear many guest speakers. The group sponsored two booths at Wallingford's carnival. At the state convention Southwestern took first place in chapter history competition, and second for members attending.

ABOVE: Members of PBL included Ed Hutmacher, Dan McGowan, Lyle Weinert, Rod Kreie, Doug Gilbert, Marty Waples, Julie Wilson, Richard Dickerhoff, Rex Johnson, Ron Denton, Fran Broadhurst, Tom Schou, Mary Coon, Brian Downey, Beth Wilke, Jane Randall, Warren Heinen, Karen Rymph, Kenton Clinesmith, Diane Cook, Karla Cheney, Mike Bishop, Jan Hoffine, Ralph Hanna, Myrtle Berding, and Judy Kramer. Dr. Bright and Mr. Wolfe were sponsors.

Many individuals, including those listed below, won awards in competitive examinations. Seven 3rd place awards were also received.

Personnel Management
Mike Bishop, 2nd

Office Machines
Mary Coon, 2nd

Principles of Sales
Ron Denton, 1st; Brian Downey, 2nd

Mr. Future Business Executive
Doug Gilbert, 2nd

Principles of Retailing
Wayne King, 1st

Principles of Insurance
Lyle Weinert, 1st

Principles of Advertising
Karla Cheney, 2nd

Mr. Future Business Teacher
Ron Denton, 2nd

Business Letter Writing
Lyle Weinert, 1st

Who's Who in Phi Beta Lambda
Mike Bishop, Brian Downey, Lyle Weinert.

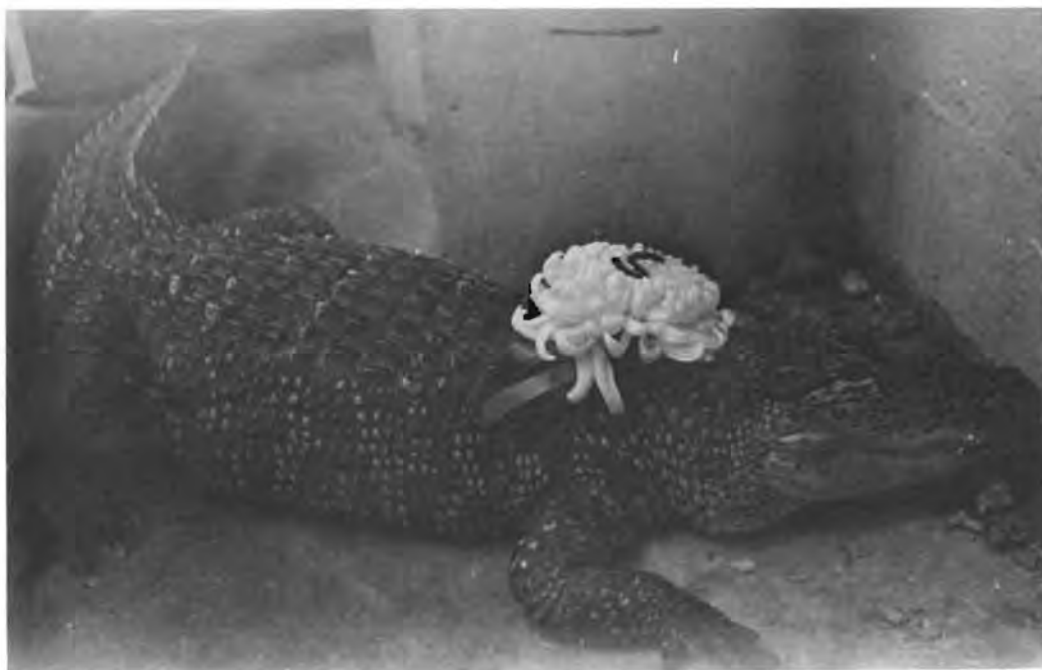


Tri-Beta Explores The World Of Nature

Tri-Beta, Biology Honor Society, sponsored a number of films throughout the year. One film explained the habits of the whale with the rest dealing on animal behavior.

AT RIGHT, Alvin the alligator, and pride of Mossman Hall, was decorated with a Southwestern mum to show his school spirit.

BELOW, members of Tri-Beta include Jim Morgan, Esther Wilson, Greg Unruh, Joe Schrag, Ollis Anderson, Randy Duncan, Mike Atakpa, Gail Cherry, Karen Hobbs, Linda Nixon, Coleen Winn, Pam Smith, Rosemary Cherry, Cindy Hamm, Ivan Freeman, and Mike Fell.



Pi Gamma Mu Rebuilds

Pi Gamma Mu, national honor society for the social sciences which was founded in 1924 at Southwestern, thrived during its first year of re-establishment. Events included participating at the Bicentennial History Bowl sponsored by the Kansas Newman chapter at which SC took 1st place, a coffee given after the Homecoming game for all alumni of PGM, and two officers went to the national meeting in St. Paul, Minnesota.

AT RIGHT, PGM President Becky O'Neal and Vice-President Jerry Nixon discuss PGM future plans.

BELOW: Waynette Schoch, Becky O'Neal, and a Kansas Newman student struggle with chopsticks at a joint SC and Kansas Newman meeting where a Japanese dinner was served, followed by a demonstration of a traditional Japanese tea ceremony.



Pi Kappa Delta Builds A Winning Squad

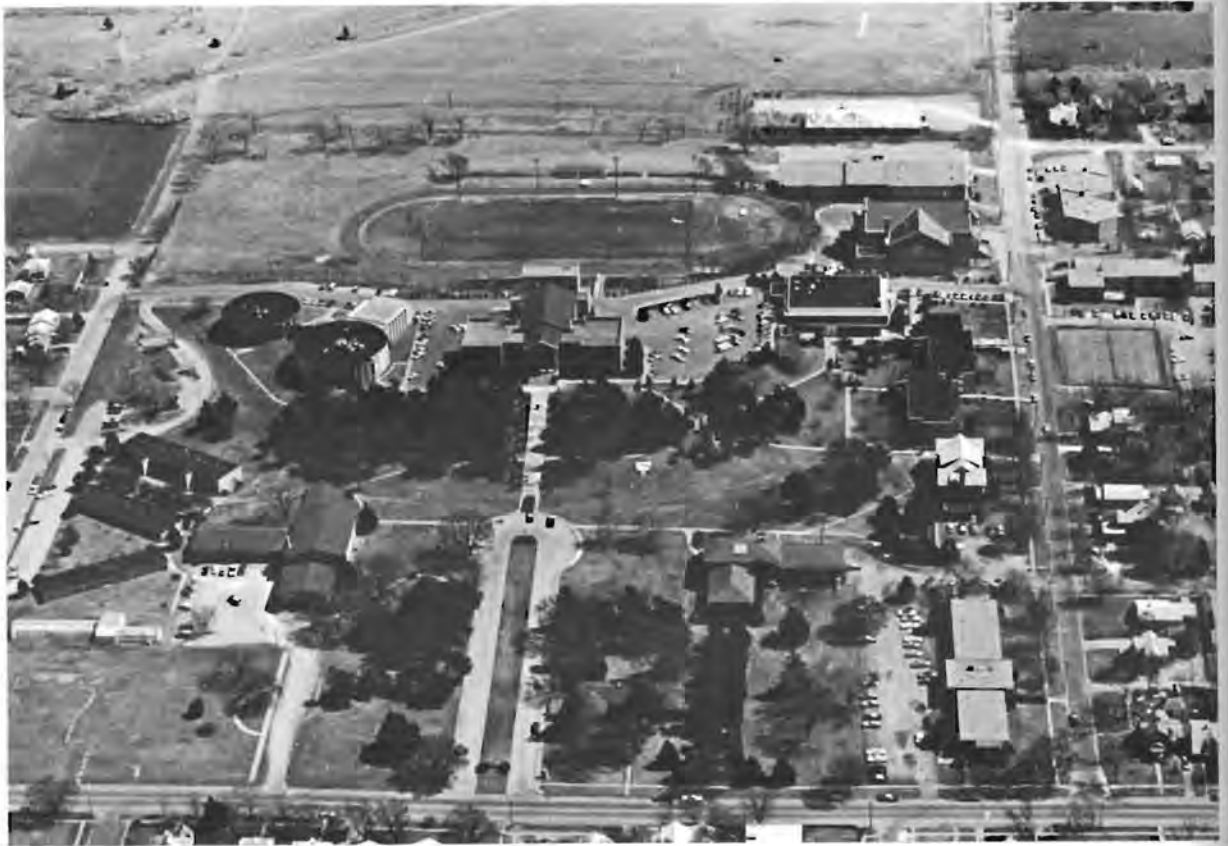
Following a slow start, the Debate team picked up speed and went through the year with a number of impressive wins. Their first big win was at Bethel College October 29-30, where the debaters took second place in tournament sweepstakes. Another victory took place last spring when the team of Tim Hammer and Frank Tutzauer took second place at the Pi Kappa Delta Nationals held in Seattle.

AT RIGHT, Linda Voth and Jimmie Robinson show one of their many trophies won during the season.

BELOW, members of the '77 Debate Squad were Coach Gary Horn, Rick Peterson, Dalvin Yager, Jimmie Robinson, Jim Williams, Tim Hammer, Randy Duncan, Deb Park, Lovina Vanderhoof, Linda Voth and Robert Wilson.

Not pictured were Carol Tutzauer, Frank Tutzauer, Brad Rymph, Paul Wilke and Tammie Daniels.





Home Economics Sororities On Campus



Kappa Omicron Phi was the National Home Economics Honor Society. Kappa's purpose was to further the field of home economics by encouraging scholastic excellence, developing leadership abilities and promoting professional activities and interests.

Gamma Omicron again sponsored the King Spice Dance in the spring which was again a success. ViJay Sherring was crowned king and given an apron and chef's hat. Many other activities were planned throughout the year.

Campus Players Share Their Talent



Campus Players, an honorary drama society, is composed of theatrical people on campus. Members of the group have had at least one major technical or acting role at Southwestern.

ABOVE: Members included Randy Juden, Phil Bachus, Darrel Dees, John Beck, Craig Ussery, Dee Ann Wills, Cindy Wesley, Carol Blanchard, Joann Downey, Allyson Moon, Jan Kraus, Linda Nixon, Ellen Pederson, Brian Downey, Barb Meier, Mary Green, and Alan Daymude. Costumes are from "Twelfth Night".

LEFT: Norman Callison, Campus Players' faculty advisor, catches a quick nap before a rehearsal of "Twelfth Night".

Thetas Active In Campus Events

The Thetas were very busy this year, sponsoring events. Their biggest project was the Stud Jock Day in the spring, which was, of course, a huge success.

BELOW: Members of the Theta Phi Delta fraternity included Tim Detter, Jim Morgan, David Whitehill, Kevin Will, Greg Unruh, Keith Graham, Randy Duncan, Ralph Hanna, Max Thompson, Rob Houser, Mickey MacNair, Steve Rosecrans, Larry Floyd, Richard Dickerhoff, Terry Canuto, Rick Shaffer, Tom Gilmartin, Rod Kreie, Marty Waples, Mike Cargill, Mike Atakpa, Davy Davidson, Ollis Anderson, Ron Denton, Chris Johnson, Rex Davison, Jerre Nolte, Mike Bishop, Kelly Siefkes, Al Renner, Jimmie Robinson, Paul Wilke, Ivan Freeman, Bill Stinson, Jim Heck, Mark Turrentine, Tony Gourlay, Ed Kearns, Ukeme Umana, Chris Downum, Bob Morgan, Larry Kedigh and Thane Mettling.



Beta Rho Mu Members Active On Campus



Beta Rho Mu fraternity participated in many sports during the year and did quite well. In Jan Term the Beta II team finished second in League II with a 5 - 1 record. The Beta I team of League II finished second in spring basketball, winning five out of seven games.

On Stud Jock Day the Betas dominated. Larry Schneck-enburger had a fantastic throw in the cookie throw. By the end of the day the Betas were tied for first place with the Thetas but Betas were allowed to keep the trophy for the year.

The Beta pledge session was enjoyed by all who saw the crazy tasks the pledges had to perform. They had to, among other things, wear dresses to the cafeteria and onions around their necks.

ABOVE: Members of Beta Rho Mu include Ricky Lowe, David Beebe, Bill Rickenbaugh, Randy Nittler, Gary Hark-rader, Doug Drennan, Ike Brady, Ken Lockwood, Ray Pot-ter, Leonard Wolfe, John Cartwright, Bob Jewell, Larry Schneck-enburger, Ron Fish and Larry Hatfield.

Pi Delts Have A Ball



Again this year the Pi Delta Sigma fraternity sponsored the St. Valentines Day Massacre Dance. The "Sinister Sweetheart" couple was Janine Woods and Mike Bishop, Theta nominees.

ABOVE: Members of Pi Delta Sigma included Karl Kleeberg, Kevin French, Steve Quibell, Paul Elam, Hal Brooks, Brian Hobbs, Charles Bing, Gavin Bevis, and Phil Archer.

RIGHT: "Sinister Sweethearts", Janine and Mike, pose for the camera.



IPO Members Support Athletic Teams



Iota Pi Omega sponsored the Bloodmobile with Theta help in setting up and the Ugly Man on Campus contest.

ABOVE: IPO members included Denice Bachman, Leann Conway, Judy Smith, Kim Handley, Marilyn Meyer, Cindi Campbell, Sharon Kanitz, Chrystal Partin, Janelle Dreier, DeAun Johnson, Pam Smith, Denise Quillen, Susan Reed, Coleen Winn, Carol Marx, Melissa Moberg, LuAnn Howard, Pam Wesbrooks, Sheryl Evans, Bev Wimmer, LeeAnne Folck, Kim Dettter, Kathy Gossett, Cinda Bliss, Carla Harris, Micki White, Renée ReQua, and Carole Spencer.

LEFT: IPO went to a great deal of work on spirit signs.

Mu Phi And Phi Mu Spread Music

Phi Mu Alpha Sinfonia is a music fraternity. They nominated Steve Rogers in the Ugly Man on Campus Contest. As you can see by the picture at left, Sinfonia is one of the zanier groups on campus.

THOSE PICTURED ARE:

Wayne Tucker, Bill Peterson, Orville Walker, Mike Marion, Craig Ussery, Dave Snyder, Steve Rogers, Steve Ruzich, and Phil Archer.



Mu Phi Epsilon, the music sorority, hosted the Sterling Staff Concert last fall which featured two guest soloists. At Christmas time they held the annual Deck the Halls of Darbeth Party with the result-a decorated Darbeth.

MEMBERS PICTURED AT LEFT ARE:

Claire Casselman, Jennifer Warner, Ellen Graeser, Becky Decker, Alice Grimwood, Susan Vodehnal, Cindy Sweaney, Janice Laber, Bonnie Bergdall, Cathy Walker, LuAnn Howard, Jan Kraus and Kris Freed. **Not pictured are:** Mary Boyle, Lisa Temple, and Jan Faidley.

A Cappella Choir Builds College Relations



Members of the A Cappella choir presented many concerts, performed in chapel several times, and toured Kansas and Colorado for seven days. The choir was under the direction of Warren Wooldridge. Lisa Temple was student conductor this year.

LEFT: Steve Short confers with Dr. Wooldridge about the choir itinerary as the bus is loaded.

BELOW: Choir members are Phil Bachus, Stephanie Harris, Craig Ussery, Alice Grimwood, Kevin Will, Lisa Temple, Randy Reusser, Claire Casselman, Greg Unruh, Jennifer Warner, Warren Wooldridge, Tim Detter, Becky Decker, Jim Carlson, Kay Kingdon, Jerre Nolte, Susan Johns, Jon Kessler, Jennie Taylor, David Herrin, Carol Blanchard, Doug Henkle, Jan Faidley, Steve Short, Jan Burgess, Mike Marion, Paula Bradley, Pam Wesbrooks, Kevin Knickerbocker, Lillian Garibay, Joe Forest, Dee Ann Wills, Bob Morgan, Kris Freed, Janice Laber, Darrel Dees, Bonnie Bergdall, Jim Morgan, Janis Matthews.

NOT PICTURED: Mike Bishop, Randy Juden, Ken Kraus, Davy Davidson, Tom Schou.



Orchestra Accompanies Many Events

College Symphony Orchestra Personnel

1st VIOLIN
Susan Johns
concertmistress
Betty Nutter
John Paulin
Jennis Wilcox
Bruce Williams
David Ross

2nd VIOLIN
Nancy Swope
principal
Pat Osborn
Sandy Dillard
Margaret Nutter
William Peterson
Karen Nash
R. B. White

VIOLA
Dave Watters
Toni Gray
Ellen Graeser

CELLO
Shirley Harms
Don Gibson

Ann Cook
Jan Burgess
Diane Snyder

STRING BASS
Winston McKeor
Pete Woodward
Merlene Waltner

FLUTE
Teresa Gaiser
Diana Bonar
Judy Gibson

OBOE
Sue Beene
Marilyn Jones

CLARINET
Susan Vodehnal
Cindy Sweaney

BASS CLARINET
Janice Faidley

BASSOON
Mary Horsch

Carolie Rae

FRENCH HORN
Denise Webster
Karen Hobbs

TRUMPET
Kurt Denton
Stephanie Kesler

TROMBONE
Jonathan Kessler
Darrel Dees

PERCUSSION
Claire Casselman

PIANO
Mary Boyle
Becky Decker

ORGAN
James Strand

HARP
William Peterson

Ross O. Williams, orchestra conductor and professor of violin at Southwestern since 1945, is retiring at the end of the 76-77 school year. He is a graduate of Southwestern.



Concert Band Builds Skill Through Practice



Members of the Concert Band are: Terri Gaiser, Diana Bonar, Ellen Pederson, Cozetta Crawford, Karla Cheney, Kay Kingdon, Sue Vodehnal, Cathy Walker, Cindy Sweaney, Lu Ann Howard, Lesa Haas, Mary Dorsch, Judy Wegele, Steve Rogers, DeVee Keely, Margarita Seley, Sue Beene, Ruth Zambrano, Jim Williams, Bonnie Bergdall, Merlene Waltner, Kay Reeder, Teresa Rawlings, Jan Faidley, Kris Freed, Joe Warren, Mike Brummett, Orville Walker, Brian Hobbs, Kurt Denton, Randy Juden, Randy Nittler, Charles Golladay, Karen Hobbs, Giselle White, Dalvin Yager, Tom Williams, Phil Bachus, Craig Wamsley, Jon Kessler, Darrel Dees, Alan Renner, Paul Edens, Phil Archer, Rob McCanon, Mike Marion, Steve Ruzich, Winston McKeon, Phil Burnside, Claire Casselman, David Snyder, and Jan Kraus.



Small Music Groups Give Performances



Pop choir, a select group from the A Cappella choir, went on tour with the choir on their trip west through western Kansas and eastern Colorado during the spring semester. The group's repertoire consists of contemporary songs.

AT RIGHT, Judy White takes a photo of a tuba and catches her reflection.



Jazz Band Goes On Tour



Jazz ensemble went on a four day tour of Kansas spring semester. One of the highlights of the ensemble's schedule was the accompaniment of great jazz trumpeter, Cat Anderson, in the fall.

AT LEFT, the woodwind quintet is shown on stage at the Founders' Day Convocation for which they played.



New Day Consort Leads Worship Services



Chaplain Interns Serve The Community



The Cowley County Chaplaincy Program was established to give upper-level pre-ministerial students the opportunity to gain experience in crisis intervention chaplaincy at the under-graduate level. The course is instructed and supervised by Dr. John Paulin, College Chaplain. Participants included Tom Schou, Kim Engleking, Lynn Dyke, Dave Rogers - Field Supervisor, Barbara Snell, Mike Marion, and Kendal Utt. These students took turns being on call for emergencies.

The New Day Consort, a worship-workshop group, traveled over 2,000 miles in Kansas and Oklahoma and visited over 50 churches. In June the group traveled to the west coast, making ten to twelve appearances. That trip covered over 5,000 miles. The Consort did find time to give a few performances on campus in chapel and leading the baccalaureate service. Members of the New Day Consort were Claire Casselman, Mike Marion, Winston McKeon, Carol Blanchard, John Paulin, Kim Engleking, and Teresa Gaiser. The picture at left is of a chapel performance.



Third Annual "Unofficial Last Chance



To Be A Stud Jock" Day



Wide Variety Of Intramural

WOMEN'S FLAG FOOTBALL

1. Sutton
2. Wallingford
3. IPO

Members of the Sutton Flag Football team were Sue Metcalf, Deb Kerr, Terry Graham, Peggy Graham, Dee Ann Wills, Carmen Jahay, Rosemary Cherry, Ann Richardson, Steph Kesler, Lovina Vanderhoof, Gail Cherry, Claire Casselman, and Cindy Wesley. Their coaches were Bob Morgan and David Beebe.

FALL BOWLING (10 teams)

	Won	Lost
1. Guttersweepers	28	8
2. Beta Rho Mu	24	12
3. ARA	21	15
4. Team #1.	20½	15½
5. Scurvy Dogs	20	16
6. Team #9	19½	16½
7. IPO	17	19

SPRING BOWLING (10 teams)

	Won	Lost
1. Scurvy Dogs	30	6
2. ARA	26	10
3. Rowdies	22	14
4. Beta Rho Mu	21	15
5. All in the Family	18	18
6. Allies	18	18
7. Guttersweepers	16	20

WOMEN'S BASKETBALL

January Term

1. Rejects
2. Aggressors
3. IPO

Spring Term

1. Rejects
2. Sherman
3. Aggressors
4. Wallingford

MEN'S INTRAMURAL FOOTBALL

	Won	Lost
1. Theta's	6	0
2. Headers	5	1
3. BSU	4	2
4. Weavers	3	3
5. BPM	2	4
6. Broadhurst	1	5
7. Hustlers	0	6

After the regular season was over, there was a playoff between the two top teams in the Toilet Bowl. The Headers won, making them the over-all champs.

Members of the Headers Intramural Football team were Bob Marsh, Rick Peterson 1, Rick Peterson 2, Lou Mignone, Paul Nation, Brad Turner, Dave Kaufman, Mike Burnett, Rob Houser, and Tom Fell.

COED VOLLEYBALL

League 1

1. Captain and the Kids
2. Tri-Beta
3. Hartman's
4. Header 1
5. Aggressors and Co.
6. Charlie's Angels
7. International Students
8. Joe's Deck
9. Hermaphrodites

League 2

1. Lucky and Lanky
2. Indians
3. Moms, Jocks, Docs, etc.
4. The Nerds
5. Header II
6. Spikers
7. Betas
8. Fantastic Freshman
9. Fell's Follies

Playoff Results

1. Lucky and Lanky
2. Captain and the Kids

Members of Lucky and Lanky were Beth and Steve Wilke, Diana and Jerry Nixon, Jimmie Robinson, Larry Floyd, Janice Laber and Paul Wilke.

Organizing the intramural sports was a very long and difficult task. The people to thank for their efforts are Ralph Hanna, Vicki Raines, and Jim Littell for time each one of them put into setting up schedules and refereeing all the games.

Sports Available At SC

JAN TERM MEN'S BASKETBALL

League 1	Won	Lost
1. We Don't Have a Name Yet	5	0
2. Header 1	4	1
3. BSU	3	2
4. Thetas	2	3
5. Pi Delts	1	4
6. Beta I	0	5

League II

1. Mean Machine	6	0
2. Beta II	5	1
3. Header II	4	2
4. Ugada	3	3
5. Dirty Shorts	2	4
6. Team America	1	5
7. Faculty	0	6

Playoff Results:

1. We Don't Have a Name Yet
2. Mean Machine

Members of "We Don't Have A Name Yet" were Danny Lambing, Kelly Creed, Bob Marsh, Rick Peterson, Jerry Nixon, Glenn McFall, Tom Fell and Charley Wilson.

COED SOFTBALL (12 teams)

Tri-Beta of League 1 beat Headers of League 2 in the playoffs.

Members of the Tri-Beta team were: Randy Duncan, Joe Schrag, Esther Wilson, Jim Morgan, Ivan Freeman, Rosemary Cherry, Degee Keely, Gail Cherry, Greg Unruh, Randy Brooks, Russ White, Mark Turrentine, Bill Stinson, Cindy Hamm, Tammy Bennett, Julie Wilson, and Steve Renner.

Members of the Headers team were: Ben Zuk, David Tasker, Ed Popplewell, Roger Olivas, Terrie Thornton, Kim Yearout, Jean Rhea, Kim Handley, Keith Tasker, Rob Houser, John Hutchinson, Grace Welch, and Gail Stonebraker.

SPRING TERM BASKETBALL (8 teams)

League I	Won	Lost
1. Theta I	7	1
2. BSU	7	1
3. Pi Delts	6	2
4. Bill's Rejects	5	3
5. Poultry Kings	3	5
6. Mean Machine	3	5
7. Team	2	6
8. Header 1	2	6

League II

1. Urchins	8	0
2. Beta I	6	2
3. Swish-its	6	2
4. Header II	4	4
5. Beta II	4	4
6. Studfac	3	5
7. Theta Rejects	2	6
8. Ugada	1	7

Playoff Results:

1. Theta I
2. Urchins



The tennis courts also saw use in the intramural program. There was a mixed doubles league set up for competition.

The Four Freshmen

The success story of the Four Freshmen started in 1947 when four guys organized a quartet at Butler University in Indianapolis. They rose to become "America's Number One Vocal and Instrumental

Quartet" and performed here on April 21. The members **BELOW** are, **FROM LEFT TO RIGHT**, Ken Albers, Ray Brown, the zany Ross Barbour, and Bob Flanigan.



William Windom Plays "Thurber"

William Windom was on campus May 13 to give his interpretations of Thurber in front of a delighted Southwestern audience. He starred in a television series "My World and Welcome to It" which was

based on the adventures of Thurber. Through his many years of acting he has become a well established name in show business.



Broadhurst Men Ingenious At Inventing New Activities



Under the inspiring leadership of President Mike Fell, Broadhurst Hall was very active throughout the year. They began the long list of activities by sponsoring Disco dances on their front lawn first semester. The Broadhurst float won first prize in the Homecoming parade with the theme of "Gunfight at the Jinx O.K. Corral." The always successful Broadhurst Slave Sale took place with some bidders paying exorbitant prices for slaves. **BELOW**, Kim Engleking auctions off another poor soul, Randy Rothe. The Car Rally sponsored by Broadhurst was also a success with many cars entering the detailed race around town, all vying for the magnificent trophy awarded. **AT LEFT**, the Broadhurst candidates for the Sinister Sweetheart Couple Contest, Joy Lewis and David Nichols.



Men Of Reid Display Enthusiasm



The men of Reid Hall seemed to have taken "Enthusiasm" as their motto this year. Whatever the activity, they did it with a great display of enthusiasm. Reid had the largest dorm rock placed on the mound this year. As you can see in the picture at left, a great deal of effort was spent in decorating the rock. Members of Reid who did not physically assist in placing the rock gave aid with loud cheers. Homecoming parade-goers had the opportunity to see a large shark, "Jaws", moving down Main Street. The Reid Hall entry showed much preparation and was quite well received.

Reid sponsored an all-night film festival. Students enjoyed the chance to see the wide variety of films.

Residents of Reid frequently engaged in water ballooning other dorms, leading Sutton and Wallingford residents to wonder when the men took time to study and sleep. When cries of "Close your window" sounded, the campus was alerted to the presence of another party of water ballooners. Reid and Broadhurst were even known to collaborate in this sport.



Erle Coleman
Resident Director



Women's Dorms Sponsor Events

Sutton Bong Show A Success

Sutton Hall was involved in many activities this year. They had the privilege of having their own resident "little brother" in Geoffrey Moon. Womens' flag football was totally dominated by the victorious Sutton team. The Bong Show sponsored by Sutton involved many students from all over campus, winning the first annual S.A.A. traveling plaque for best activity during Jan Term.

Deb Park, **PICTURED AT RIGHT**, won as the judges preferred her guitar playing to the performance of the Akulettes, **PICTURED BELOW**. Twenty-four hour visitation was approved for the dorm. The annual hamburger fry was welcomed by hungry students.



Throughout The Year

Wallingford Sponsors First Christmas Dance

Wallingford Hall co-sponsored a Christmas Dance this year. To decorate the dorm for the holidays a party was held. Mistletoe was in abundance at both the dance and party. This page shows action from the Christmas preparations. Karen Rymph didn't appreciate having her picture taken. Curt Hartman enjoyed the mistletoe. Julie Nulik preferred to wear the tinsel. Karla Cheney wrapped many presents. Karen Mogab liked the apple cider provided at the party. In the spring Wallingford sponsored a carnival on their front lawn.



Presidential Scholars Honored At Dinner



In August of 1971, the Board of Trustees approved the establishment of a Presidential Scholarship Program. This is the highest academic award offered by S.C. Ten such renewable scholarships were to be awarded to outstanding freshmen each year. There were 8 recipients for 1976-77. They are Steve Blake, Linda Voth, Jon Kessler, Greg Waller, Ellen Pederson, Craig Wamsley, Kay Reeder, and Dalvin Yager.

A dinner was held December 9 to honor the scholars. Entertainment was provided by 5 presidential scholars from previous years in a one-act musical play written and directed by Greg Unruh. Jan Kraus accompanied the group. Jim Morgan supported biology, Ivan Freeman-chemistry, and Becky Decker - music in a musical argument.



Alumnus Given Honorary Doctorate At Convocation



On March 11, the Founders Day Convocation was held to honor Dr. Neil Frank with the honorary degree, Doctor of Science.

The Dr. Lloyd M. Bertholf Teaching Fellow of the Year award was presented to Manly C. Huber, associate professor of physics and mathematics.

LEFT, Hamby Barton, Don Ruthenberg, Neil Frank, and Clarence Borger share a laugh. **CENTER**, a surprised Manly Huber and meeting with Dr. Bertholf. **BELOW**, Bob Wimmer, Neil Frank, Hamby Barton, and Clarence Borger listen to Dr. Penrose Albright, former Southwestern physics faculty member.



Ample Opportunities For Experience In The Fine Arts



Each year junior and senior music majors present a music recital in the field of their specialization. **AT LEFT**, Mary Boyle practices diligently for her senior piano recital, with the help of Susan Johns, Becky Decker, and Bonnie Bergdall.

The art students were also quite busy this year. Uldis Stepe and Mike Brown work in the Southwestern Art Gallery in Wichita. **BELOW**, Ardith Fell works on a ceramics project. The halls of Darbeth are decorated with drawings, paintings, and photos done during the year.



Building Communication With People Through Language



Barbara Meier and Linda Nixon practice their roles in the play "The House of Blue Leaves", performed first semester. The drama department was busy throughout the year with many other productions.

Alfredo Rodriguez's Spanish students tutored various Mexican-Americans in English, and in the process improved their own Spanish.



Continuing Development Of Science Program

AT RIGHT, Dr. Neil Frank held a press conference in Wichita upon his arrival from Florida. Dr. Frank, Director of the National Hurricane Center in Miami, came back to Southwestern, his alma mater, as a guest of the Science Advisory Council. At a dinner in his honor, at Beech Aircraft in Wichita, he spoke on "A Moundbuilder; An Ocean; An Encounter."

The Science Advisory Council of Southwestern College met during the Founders Day activities. The Council is composed of distinguished scientists who were invited by the college to work with the science faculty and administration in the continued development of the college's science program.



Social Science Sponsors Guest Speakers



BELOW, Kansas Attorney General Curt Schneider visited the campus to speak to some political science classes on state government.

LOWER LEFT, Jim Mount, business manager at Snyder Clinic, explains medical-clerical work to Karen Hadley as part of her self-development project for Personal Development.

Don Ruthenberg greets Bob Dole, **LEFT**, as Dole enters Messenger to hold one of his many public meetings on agriculture.



Students Build With Work Experience

Many students participated in various internships and on-campus jobs during the year. Practicums were set up through the Business Dept. to work in different areas downtown. These included credit for work at the County Attorney's office, the Data Processing Dept. at the city building and a new one set up with the City Manager of Winfield. Personal Development class provides a section for work on a self-development project which often entails an internship in an area of interest.

BELOW: Jailor Albert Clark and lawyer Hal Reed show Becky O'Neal jail records at the Courthouse as part of her internship for the class.

AT RIGHT: Charley Wilson takes a break from his work at Stewart Fieldhouse to climb a rope.





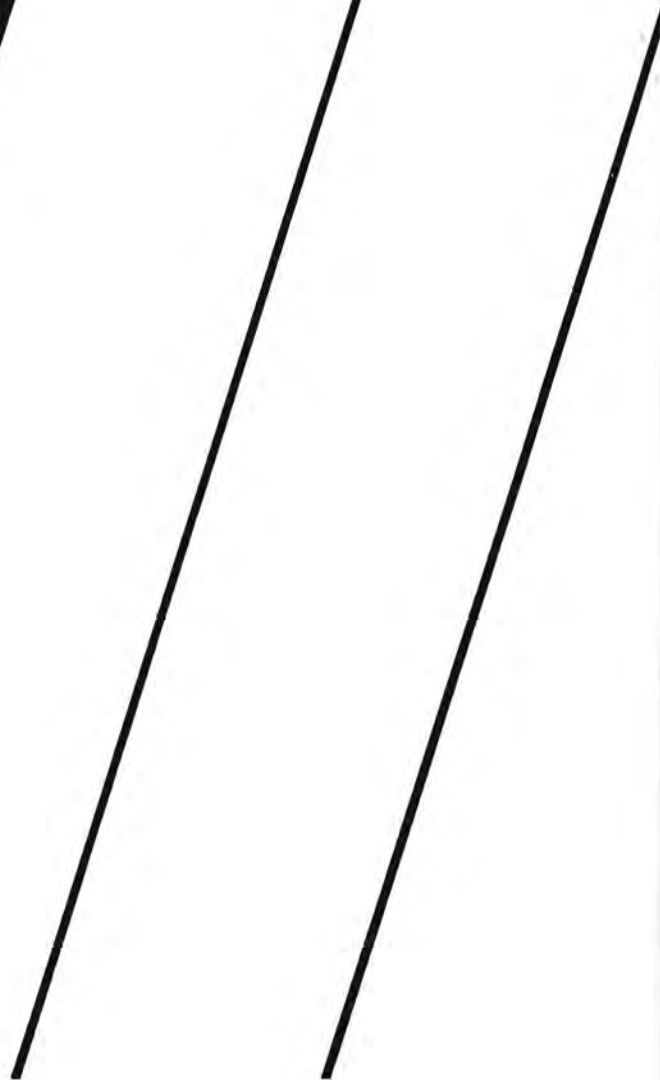
The fifteenth of every month is a very important day for people with on-campus jobs. Payday! There is much choice of jobs available. One may find work at, among other places, the cafeteria, Christy, Darbeth, Mossman, or Maintenance. There are also several jobs at the library, as the top picture shows, with secretary Irene Watson and student Elizabeth Kolling working together.

AT LEFT: Bruce Pierson, director of physical therapy at Newton Hospital, shows Kim Yearout machines used in his field of work during her internship there.





INSTANT REPLAY



What Is A College Without Traditions

Taken from a history of SC traditions which appeared in the campus newspaper in the 1940's.

A Southwestern tradition that has fallen into disuse is the graveyard. The idea was to bury our defeated foes. This was always done with proper ceremony, but the idea of a cemetery on our campus is distasteful! We have room here for nothing dead! Let our rivals bury their own dead on their own campuses!

Out of the graveyard ceremony, however, grew up and developed one of the most unique college traditions in America, absolutely original with Southwestern — the story of the Jinx.

When old Fairmount College — Wichita State University to you — was defeated in a football game to the tune of 41 to 3, a Southwestern student prepared a tombstone with the figure of a black cat, the word "Hoodoo" at the top, and the score underneath.

This stone reposed peacefully enough among the ghosts of the burial ground until it began to be noticed that from that time on, Fairmount couldn't defeat Southwestern! Occasionally S.C.'s rivals would manage to tie the score, but they could never win, whereas Southwestern always won, or at least tied the score. Then the black cat came to be called the "Jinx."

This remarkable record was kept up for 14 successive years. Sometimes the odds were so great that it seemed Southwestern couldn't win, but, in the nick of time — often in the last few minutes of

play — a mysterious change occurred, the tide turned, and Southwestern was saved again.

Finally, the Fairmounters got suspicious and superstitious. They concluded they couldn't win against the invincible Jinx, which really was the unconquerable Southwestern Spirit that prevailed in those days. In fact, someone conceived the notion that if Fairmount had the Jinx it might work for her as it had for S.C.

A night visit to our graveyard followed and the Jinx was gone. It was concealed in Morrison Library on the Fairmount campus.

One fall a former Southwestern student enrolled at Fairmount. He then asked to be shown the sights of the campus and evinced a great interest in the library. Fairmount thought it had acquired a real student. And so it had! He got all the knowledge he wanted in one day and returned to Southwestern.

A few nights later a group from Southwestern, inspired by the example of their fellow bookworm, visited the same repository of learning and brought the Jinx back home and locked it up in an underground vault in Richardson Hall. The football victories continued. Fairmount became desperate. Something had to be done.

The students were stumped. They sought the superior strategy of a faculty member and a most dastardly plot was promulgated. A fair coed from Fairmount, in her turn, registered at Southwestern — and did the Southwestern

boys go for her? A dozen far more beautiful and gracious Southwestern girls seemed commonplace and dull to the poor dupes who flocked to the standards of the charming stranger. To all who came, the lovely deceiver was most friendly and kind, and the poor fools poured out their hearts to her and told her all they knew — which wasn't very much! But it was enough! In a few days she cancelled her registration and went back to Wichita with her tale.

A few nights later the Fairmount professor of physics and his minions appeared, lifted the iron grating of a ventilating duct that led to the vault where the Jinx reposed, sent one of the smaller students into the vault, where he tampered with the lock in such a way that the professor could work the combination. The Jinx was carried away out on the Cannonball highway, placed in a ditch with a stick of dynamite and blown to bits. The pieces were gathered up and used as charms in the pockets or fists of Fairmount football players!

At least this is the story the raiders told. But its truth is disproved by the fact that three or four stones with the figure of the Jinx are known to survive concealed in various places on or near the Southwestern campus, and by the still more convincing evidence that, every now and then, the Jinx appears on the gridiron, sometimes in the form of a living cat, and awards W.S.U. a telling defeat, as it did only last year! The Jinx still lives and fights for the old S.C., and for her alone!

And Another Season Begins . . .



Builders Win Homecoming



Football players for 1976 **PICTURED BELOW FROM LEFT TO RIGHT** beginning with the **FRONT ROW:** John Hutchison, Gavin Bevis, Sam Campbell, Greg Beckmeyer, Ben Zuk, Ernie Jahay, Brian Cerrato, Greg Hall, Pat Audley, Dave Nichols, Karl Kleeberg, Randy Brooks, Lonnie Strickland, David Tasker, Eddie Popplewell, Roger Olivas, Sid Herd, Jeff Crow, Kelly Siefkes, Glenn McFall, Tim Detter, Bill Stinson, Bob Morgan, Larry Schneckenberger, Thane Mettling, Ralph Hanna, Ty Bowling, Ollis Anderson, Tony Gray, David Beebe, Charley Wilson, Gary Harkrader, Ed Baker, Willie Stokes, Brett Bazil, Gaylord Hinshaw, Hal Simons, Ken Lockwood. The Builder coaches were Jim Paramore - head coach, Byron Jones - lineback coach, Duane Rankin - defensive secondary, Al Holde- man - offensive and defensive line, Lou Mignone and Paul Nation - assistants.

Greg Beckmeyer was named to the All Conference Offensive Team, Kelly Siefkes to the All Conference Defensive Team. John Hutchison received Honorable Mention in the conference.



FOOTBALL SCOREBOARD

	SC	Opponent
Alumni Game	14	14
Ottawa University	12	21
Friends University	13	23
Bethel College	0	20
Tabor College (Homecoming)	39	14
Sterling College	13	28
McPherson College	36	0
St. Mary's of the Plains	26	30
Bethany College	6	3
Kansas Wesleyan University	29	15

Conference Record
3 - 5

Overall Record
3 - 6 - 1

Sixth Place in KCAC



X-Country Builds Dedication

Cross-country team members Blake Ortman, Dave Davidson, Ron Hutto, Chris Downum, Jim Morgan, Ivan Freeman, Steve Renner, and Craig Wamsley took the initiative and showed the dedication to the sport necessary to discipline themselves to run 75 to 90 miles a week. While the team's record may not show it, many fine individual and team performances were turned in by these men. In a dual with Emporia, the Builders were defeated 17 to 45. Southwestern was twelfth out of thirteen colleges and universities in the Gold Classic. At the O.B.U. Invitational, Southwestern placed fourth out of eight teams. The Builders took fifth in a field of six schools at the O.C.C. Invitational. In the Bethany Quadrangular, scored as a triple dual, SC beat Kansas Wesleyan 18 to 39, losing to Marymount and Bethany. With nine schools participating in the Marymount Invitational the Builders placed eighth.

The Pittsburg State Dual was lost 15 to 45. Out of the four KCAC schools participating this year, Southwestern placed third. Members of the team also participated in the District 10 meet.



Emporia

Steve Renner - 4, Chris Downum - 8, Dave Davidson - 10, Ivan Freeman - 11, Ron Hutto - 12, Blake Ortman - 13, Jim Morgan - 14, Craig Wamsley - 15.

Gold Classic (330 runners)

Steve Renner - 103, Chris Downum - 114, Dave Davidson - 121, Ron Hutto - 185, Ivan Freeman - 186, Blake Ortman - 196, Craig Wamsley - 208, Jim Morgan - 209.

O.B.U. Invitational

Chris Downum - 6, Steve Renner - 14, Ron Hutto - 19, Dave Davidson - 25, Ivan Freeman - 32, Blake Ortman - 35, Craig Wamsley - 37, Jim Morgan - not placed.

O.C.C. Invitational

Chris Downum - 21, Dave Davidson - 28, Ron Hutto - 29, Ivan Freeman - 33, Steve Renner - 36, Blake Ortman - 38, Craig Wamsley - 41.

Bethany Quadrangular

Steve Renner - 4, Chris Downum - 15, Dave Davidson - 17, Ron Hutto - 18, Ivan Freeman - 23, Blake Ortman - 30, Craig Wamsley - 31.

Marymount Invitational

Chris Downum - 35, Dave Davidson - 39, Ivan Freeman - 40, Blake Ortman - 47, Craig Wamsley - 49.

Pittsburg State Dual

Chris Downum - 7, Ron Hutto - 8, Ivan Freeman - 9, Blake Ortman - 10, Craig Wamsley - 11.

KCAC

Steve Renner - 7, Chris Downum - 15, Dave Davidson - 20, Ivan Freeman - 22, Blake Ortman - 23, Craig Wamsley - 25.

District 10

Steve Renner - 25, Blake Ortman - 46.



Golf Team 2nd In KCAC



GOLF RESULTS

Event	Finish
Kansas Newman Inv.	4th
Emporia State	
Southwestern Inv.	4th
Missouri Southern Inv.	
Friends Inv.	6th
Marymount Inv.	5th
W.S.U. Inv.	5th
KWU Inv.	5th
KCAC	2nd
District 10	

ABOVE: Members of the golf team were Paul Edens, Con Shepard, Bob Marsh, Coach Bill Stephens, Jim Fishback, and Paul Lewis. Paul Edens placed 1st at SC, 3rd at Kansas Newman, 3rd at Marymount, 3rd at KWU, and 3rd at the KCAC tournament. Paul Lewis placed 10th in the KCAC.

Volleyball Team 4th In Conference

VOLLEYBALL SCOREBOARD

Marymount	15-12, 8-15, 9-15	lost
Bethel	5-15, 2-15	lost
Ottawa	6-15, 0-15	lost
Baker	1-15, 15-10, 9-15	lost
Kansas Newman	15-9, 15-9	won
Sterling	6-15, 10-15	lost
Bethel	12-15, 8-15	lost
Tabor	10-15, 3-15	lost
St. Mary's	15-7, 15-1	won
McPherson	15-6, 13-15, 15-7	won
Kansas Wesleyan	9-15, 15-2, 11-15	lost
Bethany	15-5, 15-11	won
Pratt Juco	3-15, 16-14, 14-16	lost
Cowley Co. Juco	15-3, 15-7	won
St. Johns	15-8, 15-7	won
Hutchinson Juco	6-15, 15-13, 15-3	won
Pratt	13-15, 5-15	lost
Sterling	16-14, 15-11	won
Bethel	3-15, 7-15	lost
Tabor	13-15, 3-15	lost
Washburn	7-15, 6-15	lost
Mid America Nazarene	15-9, 15-6	won
Ottawa	15-5, 14-16, 15-12	won
St. Mary's	15-6, 7-15, 15-10	won
McPherson	15-10, 15-10	won
Kansas Wesleyan	15-3, 8-15, 15-9	won
Bethany	6-15, 1-15	lost
Cowley Co. Juco	15-12, 13-15, 15-13	won



Volleyball team members pictured on the **OPPOSITE PAGE** are **FROM LEFT TO RIGHT:** Dar Richert, Kenna Utt, Bunny Wilson, Judy Kramer, Grace Welch, Jane Randall, Becky Schroll, Teresa Rawlings, Kathy Gossett, Kim Handley, and Gayle Zollars. Not pictured are Lizzy Engelen and coach Kathy ReQua. The relatively young team gained experience and skill as they earned fourth place in the conference with a 14 - 14 record. For the second consecutive year Kim Handley was selected as a member of the All Conference Team. This year the choice was unanimous. None of the team is graduating so the prospects for the future look excellent. With the experience gained in working together this year and the progress shown during the season, the team should be a strong contender for the conference championship next year.



Women's Tennis Team Places

With Gail Stonebraker's strong performance in winning the KCAC #4 singles title and teaming with De-vee Keely to win the KCAC #2 doubles title, South-western finished second to conference champion McPherson College. The conference tourney was hosted by S.C. in October. In other singles action, Jan Kraus won 3rd place in #1 singles, Esther Wilson won 3rd place in #2 singles, Devee Keely won 2nd place in #3 singles, Beth Wilke won 3rd place in #5 singles and Laurie White won 2nd place in #6 singles. In #1 doubles Kraus-Wilson won 4th place, and in #3 doubles Wilke-White won 3rd place. The team finished with a 5 win - 1 loss record in the KCAC and had a 8 win - 5 loss overall record that included dual matches with Wichita State University and Oklahoma University Junior Varsity. With a strong returning nucleus of 5 lettermen and some strong junior college and freshman prospects, S.C.'s outlook for next season looks bright. The team was coached by John Paulin. Paula Bradley and Sharon Kanitz were also members of the team.



INDIVIDUAL SINGLES/DOUBLES RECORDS

			W - L
Jan Kraus	#1	Singles	4 - 7
Esther Wilson	#2	Singles	5 - 4
Devee Keely	#3	Singles	5 - 5
Gail Stonebraker	#4	Singles	6 - 4
Beth Wilke	#5	Singles	5 - 5
Laurie White	#6	Singles	4 - 6
Sharon Kanitz	#7	Singles	1 - 3
Kraus/Wilson	#1	Doubles	3 - 6
Kraus/Kanitz			0 - 2
Keely/Stonebraker	#2	Doubles	7 - 3
Wilke/White	#3	Doubles	5 - 5

es Second In KCAC



WOMEN'S TENNIS SCOREBOARD FALL 1976

Southwestern	1	WSU	8
Southwestern	6	Tabor	3
Southwestern	7	Sterling	2
Southwestern	8	Bethel	1
Southwestern	3	McPherson	6
Southwestern	7	Bethany	2
Southwestern	0	O. U. Jr. Var.	9
Southwestern	0	WSU	9

KCAC:		
McPherson		20
Southwestern		14
Bethany		9
Tabor		7
Sterling		3
Bethel		1

OVERALL -	Won 8	Lost 5
KCAC -	Won 5	Lost 1



Men's Tennis 5th In KCAC



This year's tennis team was a young team with only one senior. Members of the team were Bryan Drake, David King, Felix Grimmett, Ken Kraus, Jeff Friedrich, and David Herrin. The team was coached by Jim Paramore.

TENNIS RESULTS

Southwestern	2	Bethel	7
Southwestern	9	KWU	0
Southwestern	0	Bethany	9
Southwestern	4	Friends	5
Southwestern	0	McPherson	9
Southwestern	6	Sterling	3
Southwestern	0	Tabor	9
Southwestern	4	Bethel	5
Southwestern	0	Kansas Newman	9
Southwestern	0	Cowley County	9



LEFT: Someone had some fun with the trophies in the student union as this picture shows.

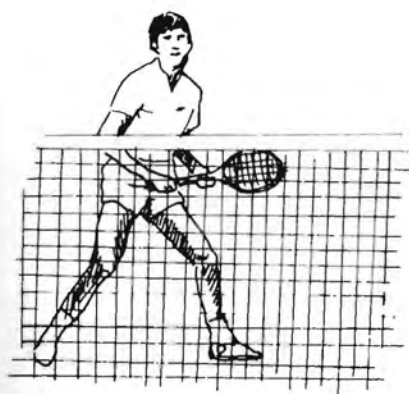
CONFERENCE RECORDS

Singles

Ken Kraus	4-4
Felix Grimmett	4-4
Bryan Drake	3-5
David King	2-6
David Herrin	3-5
Jeff Friedrich	1-7

Doubles

Kraus/Grimmett	3-5
Drake/Herrin	1-7
King/Friedrich	4-4



1977 KCAC Champions



1977 was the year for Southwestern Basketball. They kept winning and winning and won their way to the KCAC Championships.

Individual Awards

Rick Peterson-Most Valuable Player, All District 10, All KCAC

Coach Bill Stephens-Coach of the Year-KCAC

Paul Wilke- Honorable mention KCAC, top rebounder

Mike Burnett-Most Inspirational Player-2nd consecutive year, top Free Throw shooter

Bob Nash-Top Defensive Player

Rick Jones-Outstanding Freshman

Ike Brady & Rick Peterson-1977-78 co-captains

Members of the '77 team were: Larry Burnett, Dave Whitehill, Fred Howie, Trent Weaver, Paul Wilke, Steve Wilke, Bob Nash, Larry Firebaugh, Mike Burnett, Larry Floyd, David Turner, Leonard Wolfe, Rick Peterson, Mickey MacNair, Chris Johnson, Ralph Hanna, Don Jones, Tom Williams, Bill Stinson, Rick Jones, Con Shepard, Rick Shaffer, and Ike Brady.





VARSITY BASKETBALL SCOREBOARD

	SC	Opponent
Alumni	83	87
Northwestern State, OK	93	90
Baker University	77	72
Friends University	70	64
Emporia Kansas State	64	94
Oklahoma Christian College	70	89
Tabor College	85	73
Bethel College	64	43
Langston	63	62
Friends University	54	62
Kansas Newman College	73	75
Sterling College	73	63
McPherson College	75	79
St. Mary of the Plains	71	65
Bethany College	84	88
Kansas Wesleyan	82	84
Friends University	77	64
Bethel College	64	61
Tabor College	87	82
Sterling College	65	79
McPherson College	62	61
St. Mary of the Plains	71	66
Bethany College	64	62
Kansas Wesleyan	100	80
Bethany College (Playoff)	68	67
Friends University (District 10)	68	87
Conference Record	Overall Record	
12 - 4	16 - 9	



Junior Varsity Builds New Talent

JUNIOR VARSITY SCOREBOARD

	SC	Opponent
Alumni	89	45
St. Johns	84	56
Baker University	83	89
Friends University	70	93
Emporia Kansas State College	59	64
St. Johns	103	82
Tabor College	81	66
Bethel College	79	85
Sterling College	72	45
McPherson College	86	70
St. Mary's of the Plains	69	54
Bethany College	61	68
Kansas Wesleyan University	94	86
Tabor College	88	69
Sterling College	67	65
McPherson College	89	73
St. Mary's of the Plains	84	61
Bethany College	76	67
Friends University	93	102
Bethel College	92	58

Overall Record
14 - 6



Coaches Help Make It Happen



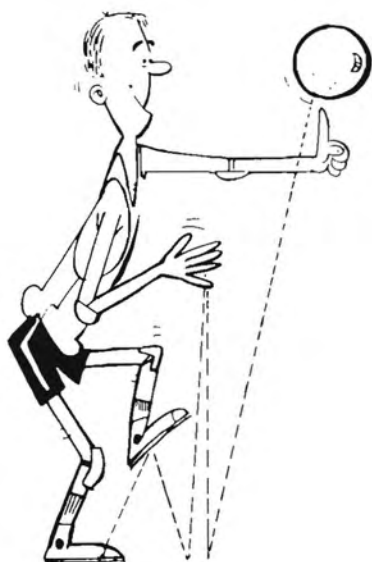
AT LEFT: Floyd Farris was the Junior Varsity coach, and helped the team greatly with his knowledge of the game and coached them through a good season. **BELOW:** Bill Stephens coached the Builders to many great victories, with the final result being the KCAC Conference Championship. With his coaching talent the Builders should have many more winning seasons.



BELOW: Ron Rivers proved to be a very capable Student Assistant coach. He brought much basketball experience with him from his college days where he earned All-American honors.

BOTTOM RIGHT: Senior Felix Grimmert was an Assistant coach. He was missed as a player but helped the team with his coaching.







SC tied with Bethany and Friends for the KCAC Championship. Friends automatically received a district playoff position with Southwestern and Bethany having a playoff game for the second slot.

AT LEFT is a picture taken during one of the most exciting games of the year, the playoff game between Bethany and Southwestern. It appeared that half of the SC student body was jammed into a small square of Bethany's gym. But any discomfort felt was quickly forgotten in all the excitement of the game as Southwestern defeated the Swedes by one point, 68-67. In the District 10 game, Southwestern played Friends and was defeated 68-87. At the game the players were supported immensely by the fans. The game was held on the Friends campus but there were more SC supporters there than Friends fans.



Brothers Work Together On Team

The '77 Builder Basketball squad had three sets of brothers playing on it. **AT RIGHT** are Don and Rickie Jones, sophomore and freshman respectively, from Tulsa, Oklahoma. They were outstanding players in high school, both receiving All-District, All-City, and All-Conference player awards. Rickie also was on the All-State team.

BELOW are Larry and Mike Burnett. Mike was a graduating senior who will be missed but Larry has three more years at SC. Mike was one of the Tri-captains on the team and was voted Most Inspirational Player for the second consecutive year.

At **BOTTOM RIGHT** are the Wilke brothers, Paul and Steve. The good size of both and their great talent enabled them to help the team immensely. Paul received Honorable Mention in the KCAC for his outstanding work.



Builder Women 3rd In Conference



WOMEN'S BASKETBALL SCOREBOARD

	SC	Opponent
Cowley County Jr. College	75	62
Friends	87	50
Tabor	54	65
Bethel	53	41
Sterling	65	32
McPherson	68	69
St. Mary's of the Plains	47	66
Bethany	67	69
Kansas Wesleyan	69	33
Kansas Newman	62	33
Marymount	62	53
Friends	55	50
Bethel	56	62
Tabor	61	42
Sterling	77	52
McPherson College	80	78
St. Mary's of the Plains	68	65
Bethany	66	49
Kansas Wesleyan	72	36
KCAC Record — 12 - 4	Overall Record — 15 - 4	

Three girls received conference honors after a great season. Grace Welch, a sophomore, and junior Dar Richert were voted to the KCAC team. Grace by a unanimous vote. Kim Handley was awarded Honorable Mention in KCAC.

AT LEFT, Kim Handley and Esther Wilson guard opponents. **BELOW,** members of the basketball team were Bunny Wilson, Grace Welch, Kim Handley, Dar Richert, Deb Kerr, Kim Yearout, Esther Wilson, Joy Lewellan, Kenna Utt, Becky Schroll, and Teresa Rawlings.



SC Tracksters 4th In Conference



TRACK RESULTS

3/18/77

1st	Oklahoma Christian College	144
2nd	Central State University	64
3rd	Southwestern College	57
4th	Kansas Wesleyan University	23

3/25/77

Friends Dual at Southwestern		
1st	Southwestern College	152
2nd	Friends' University	59

3/30/77

Bethel Relays		
1st	McPherson College	73
2nd	Bethel College	63
3rd	Southwestern College	46
4th	Friends' University	8

4/09/77

Bethany Triangular		
1st	Ft. Hays State University	134
2nd	Bethany College	54
3rd	Southwestern College	14

4/12/77

Bluejay Invitational		
1st	Bethany College	207
2nd	McPherson College	144½
3rd	Bethel College	78
4th	Southwestern College	70½
5th	Washburn University	33
6th	Sterling College	29
7th	St. Mary's of the Plains	10
8th	Tabor College	8
9th	Marymount College	4
10th	Friends' University	3

4/16/77

Emporia Relays

4/26/77

McPherson Invitational		
1st	Bethany College	260
2nd	McPherson College	168
3rd	Southwestern College	76

4/30/77

Southwestern College

5/07/77

Doane Relays		
4th	Sprint Medley Relay	
3rd	Mile Relay	
4th	Pole Vault	
3rd	Mile Run	
2nd	Three Mile Run	

5/13/77

KCAC Meet at Lindsborg		
1st	Bethany College	210
2nd	McPherson College	175
3rd	Bethel College	77
4th	Southwestern College	66
5th	Kansas Wesleyan University	40
6th	Sterling College	13
7th	Friends' University	8
8th	Tabor College	0



NEW RECORDS

School

Mile Run	Steve Renner	4:19.5
Three Mile Run	Steve Renner	14:36.8
1500 Meter Run	Steve Renner	3.57

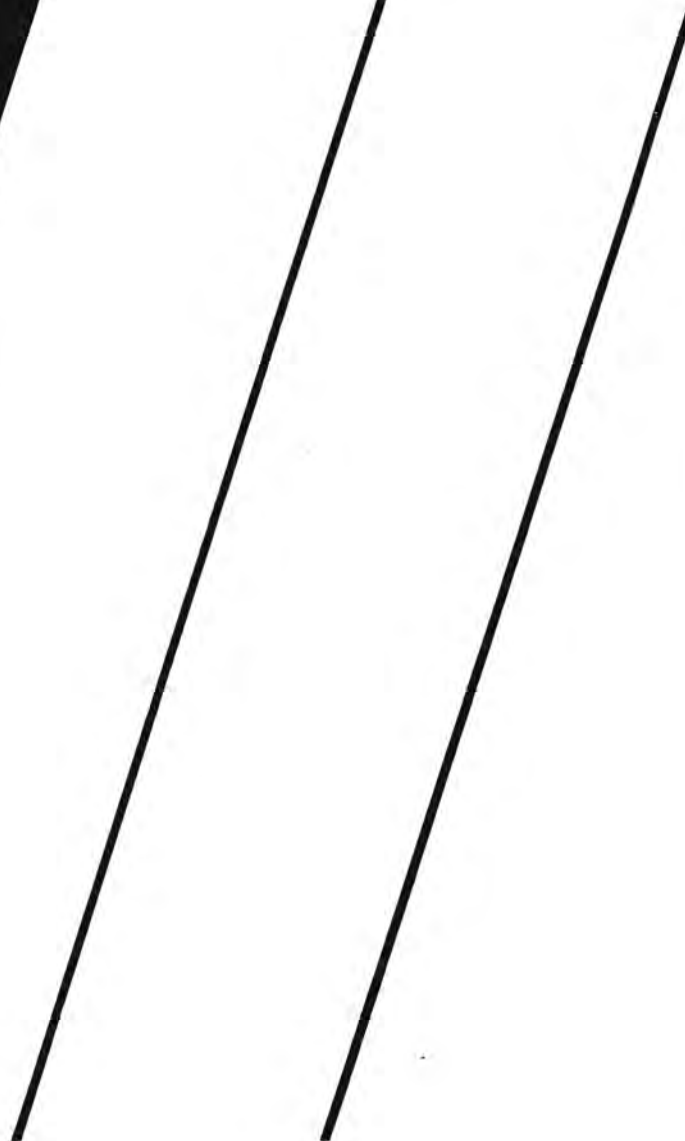
School and Conference

Hammer Throw	Lou Mignone	157'0"
--------------	-------------	--------

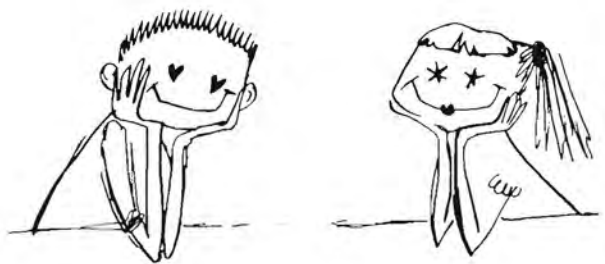




PEOPLE



NOT PICTURED:
Emmanuel Peters



F r e s h m e n

Darlene Adkins
Maria Allard
Beth Anderson
Eric Andreas
Robert Bagot



Brenda Bailey
Edward Baker
Jerry Barnes
Dana Basinger
Dave Beebe



Charles Bing
Steve Blake
Cinda Bliss
Diana Bonar
Tybert Bowling



Debra Brennan
Hal Brooks
Susan S. Brooks
Virgil Brooks
Jan Burgess





Larry Burnett
Philip Burnside
Rebecca Butler
Cynthia Campbell
Terry Canuto



Scott Carter
John Cartwright
Cecelia Charles
Tara Conway
Ann Cook



Peggy Craig
Cozetta Crawford
David Creveling
Tammie Daniel
Darrel Dees



Kurt Denton
Kim Detter
Todd Diacon
Daniel Dible
Kathryn Dible

F r e s h m e n

F r e s h m e n

Bryan Drake
Janelle Dreier
Betty Eastman
Paul Elam
Sheryl Evans



Mardon Flickinger
Jane Flint
Glenn Fogelberg
Kevin French
Jeff Friedrich



Tony Gabriel
Anneliese Goering
Kathryn Gossett
Beverly Graeser
Peggy Graham



Melodie Graves
Tony Gray
Cindy Gropper
Robert Hamilton
Gary Harkrader



Curtis Hartman
Doug Henkle
Susan Hickok
Karen Hill
Gaylord Hinshaw



Shelley Hook
Fred Howie
Della Johnson
Rickie Jones
Randy Juden





Sharon Kanitz
Kody Kearns
Stephanie Kesler
Jonathan Kessler
David King



Thomas King
Kay Kingdon
Terry Krug
Brenda Lacey
Ron Lee



Joy Lewellan
Loretha Lewis
Kenneth Lockwood
Vince Maiale
Cinda Mann



Jim Maxton
Steven Mayo
Kent McIntyre
Thane Mettling
Darrell Minton

F r e s h m e n

F r e s h m e n



Karen Mogab
Bob Morgan
Kevin Mulvaney
Leonard Murphy
Darwin Newton



Jerre Nolte
Julie Nulik
Christiana Okokon
Debra O'Neal
Brent Overbey



Loretta Paris
Kathryn Parsons
Chrystal Partin
Ellen Pederson
Bill Peterson



Cynthia Piel
Orvaleen Post
Steve Quibell
Teresa Rawlings
Kay Reeder





F r e s h m e n



Chris Reimer
Jana ReQua
Randy Reusser
Forrest Robinson
Marsha Roe



Randy Rothe
Lena Roy
Mark Ryker
Karen Rymph
Harleen Santos



Esther Scheurich
Larry Schneckenburger
Marci Schuster
Rick Shaffer
Linda Sherman



Hal Simons
John Simpson
Tracy Stahlecker
James Standerfer
Debbie Tencleve

F r e s h m e n



Mark Thompson
David Turner
Ukeme Umana
Lovina Vanderhoof
Linda Voth



Donna Wacker
Sherry Wadleigh
Greg Waller
Craig Wamsley
Pam Wesbrooks



Laurie White
Michelle White
Stephanie White
Dave Whitehill
Paul Wilke



Kevin Will
Gene Williams
Tom Williams
Bunny Wilson
Charley Wilson



Robert Wilson
Beverly Wimmer
Kris Wyckoff
Dalvin Yager
Judie Yazzie





NOT PICTURED:

LaMar Burks
Stephanie Harris
Doug Heck
Janis Matthew

S
o
p
h
o
m
o
r
e
s



Ollis Anderson
Denice Bachman
Kathie Bacon
Pat Barker
Brett Bazil



Sue Benney
Tammy Bennett
Pam Boyer
Cindy Brennan
Randy Brooks



Claire Casselman
Karla Cheney
Gail Cherry
Kenton Clinesmith
Erle Coleman



Carla Cornett
Terry Craft
Robert Crank
Jeff Crow
Davey Davidson

S o p h o m o r e s



Alan Daymude
Ron Denton
Tim Detter
Chris Downum
Doug Drennan



Randy Duncan
Lizzy Engelen
Carey Engleking
Wilson Evelle
Tom Fell



Connie Feste
Ron Fish
LeeAnne Folck
Joe Forest
Terry Gaiser



Cesar Garces
Tom Gilmartin
Chuck Golladay
Tony Gourlay
Lesa Haas





S o p h o m o r e s



Karen Hadley
Cindy Hamm
Kim Handley
David Herrin
Craig Hinegardner



Karen Hobbs
Lu Ann Howard
Betty Hutmacher
Ed Hutmacher
Susan Johns



Chris Johnson
DeAun Johnson
Donald Jones
Julie Jones
Priscilla Jones



Eddie Kearns
Larry Kedigh
Jason Kenyon
Anita Keplinger
Deb Kerr



Sophomores

Karl Kleeberg
Elizabeth Kolling
Judy Kramer
Jan Kraus
Dana Kreie



Ernie Laughter
Michael Lenhart
Marilyn Magnusson
Sonja Makoski
Bob Marsh



Gay Massey
Rob McCanon
Tim McCulloch
Dan McGowan
Sharon McIntyre



Winston McKeon
Barb Meier
Marilyn Meyer
Beth Miller
Carol Moore





Sophomores



Donna Mugler
Karen Nash
Diana Nixon
Linda Nixon
Roger Olivas



James Pappas
Jean Parker
Rick Peterson
Rick Peterson
Steve Phillips



Doris Phipps
Vicki Raines
Jane Randall
Susan Reed
Dave Rogers



Sharon Rogers
Donnell Ruthenberg
Carol Rymph
Tom Schou
Susan Scovel

Sophomores



David Seibel
Denise Shay
ViJay Sherring
Vineeta Sherring
Kelly Siefkes



Bill Stinson
Jim Stinson
Cindy Sweaney
Nancy Swope
David Tasker



Keith Tasker
Jennie Taylor
Kevin Tennal
Melody Tennal
Tim Tillman



Mark Turrentine
Craig Ussery
Kevin Vaughters
Cathy Walker
Nate Walker





Spencer Wallace
Kendall Waller



Dana Wanzer
Earl Ward
Joe Warren
Jan Watt
Grace Welch



Grant Wencel
Cindy Wesley
Judy White
Jim Williams
Dee Ann Wills



Esther Wilson
Leonard Wolfe
Janine Woods
Kim Yearout
Gayle Zollars

Sophomores

Juniors

NOT PICTURED:

Carol Blanchard
Charles Colvin
Deb Park
Sharon Stokes
Willie Stokes
Lonnie Strickland
David Waldschmidt



Pam Alexander
Phil Archer
Tracy Beckwith
Myrtle Berding
Kim Bever



Paula Bradley
Ike Brady
Kris Brown
Michael Brown
Mike Brummett



Daun Burling
Tim Butler
Sam Campbell
David Carrell
Betty Coon



Mary Coon
Don Courtney
Kelly Creed
Norman Crow
Debra Davis





Donnie Davison
Becky Decker
Richard Dickerhoff
Tim Doty
Lynn Dyke



Kim Engleking
Larry Firebaugh
Larry Floyd
Kristine Freed
Laura Fulcher



Doug Gilbert
Ellen Graeser
Mary Green
Alice Grimwood
Candy Hackathorn



Brad Hammel
Ralph Hanna
Kevin Hartley
Larry Hatfield
Sid Herd

Juniors

J u n i o r s



Kelly Hintz
Vicki Hittle
Jan Hoffine
Mike Holmes
Carmen Jahay



Ernie Jahay
Rex Johnson
David Kaufman
Devee Keely
Wayne King



Steve Knollenberg
Essa Koroma
Ken Kraus
Janice Laber
Larry Lambdin



Danny Lambing
Jim Littell
Lisa Long
Ruth Matney
Steve May





J u n i o r s



Melissa Moberg
Tim Mousley
Elva Nelson
Dave Nichols
Dee Nienhuser



Donna Palmer
Eddie Popplewell
Dar Richert
Rickey Rindfleisch
Roland Rivers



Robert Rogers
Waynette Schoch
Becky Schroll
Con Shepard
Nancy Sherman



Judy Shore
Steve Short
Mona Simonton
Alexis Smith
Karen Smith

Juniors

Barbara Snell



Dave Snyder
Melinda Snyder
Carole Spencer
Uldis Stepe
Nancy Talbert



Theresa Thompson
Terrie Thornton
Marilyn Turner
Kenna Utt
Susan Vodehnal



Marty Waples
Sarah Warren
Trent Weaver
Lyle Weinert
Giselle White



Mike Widler
Beth Wilke
Steve Wilke
Anne Williams
Jon Wooldridge





NOT PICTURED:

Bob McConnell
 Ian McKinley
 Blake Ortman
 Krista Perkins
 Joe Schrag
 Kris Wetterhus
 Tom Williams

S e n i o r s



Grace Anthis
 Mike Atakpa
 Pat Audley
 Phil Bachus
 Sulinda Baker



Bonnie Barnett
 Carolyn Baumann
 John Beck
 Greg Beckmeyer
 Tom Berding



Bonnie Bergdall
 Gavin Bevis
 Mike Bishop
 Joyce Black
 Mary Boyle



Lou Bradbury
 Sue Brooks
 Susan Brooks
 Linda Burkett
 Mike Burnett



S e n i o r s

Mike Cargill
Jim Carlson
Brian Cerrato
Rosemary Cherry
Jill Coleman



Diane Cook
Cindy Crawford
Rex Davison
Dodd Demas
Terry Dennis



Tom DeRuggiero
Terry Deschaine
Bob DeVore
Jim Dooley
Brian Downey



Randy Duncan
Kevin Dutton
Bob Eagleson
Paul Edens
Lora Ellison



S e n i o r s



Jan Faidley
Jane Farnsworth
Ardith Fell
Mike Fell
Lynn Felts



Susan Finney
Jim Fishback
Ivan Freeman
Jorge Garces
Katina Garces



Lillian Garibay
Ann Goyen
Keith Graham
Teresa Graham
Paul Greer



Felix Grimmert
Beverly Grunder
Greg Hall
Tim Hammer
Carla Harris



Craig Hartman
Jim Heck
Warren Heinen
Brian Hobbs
Paul Hobus



Brad Holman
Celia Hook
Rob Houser
John Hutchison
Ron Hutto



S e n i o r s

Bob Jewell
Paulette Jones
Patrick Kabba
Becky Kearns
Hettie Keller



Pam King
Rod Kreie
Anita Lawrence
Mary LeHew
Paul Lewis



Ed Long
Diane MacNair
Mickey MacNair
Tom Mangjamele
Mike Marion



Carol Marx
Glenn McFall
John McGowan
Michael McStravog
Sue Metcalf



S e n i o r s



Kitty Miers
Lou Mignone
Doug Miller
Lonnie Mills
Carley Moberg



Suzanne Moore
Jim Morgan
Marianne Morris
Margie Myer
Bob Nash



Paul Nation
Diana Neely
Pauline Nichols
Randy Nittler
Jerry Nixon



Effiong Okokon
Becky O'Neal
Kay Paton
Denise Quillen
Joe Ramsey



Susan Rankin
Steve Renner
Bill Rinkenbaugh
Steve Rogers
Steve Rosecrans



Elaine Rosson
Steve Ruzich
Brad Rymph
Neil Schroll
Pam Sedei

S e n i o r s

Denise Sherwood
Yutaka Shinozaki



Judy Smith
Pam Smith
Jenny Starry
Mary Stone
Gail Stonebraker



Lisa Temple
Judy Thomas
Carol Thorne
Brad Turner
Greg Unruh



Kendal Utt
Ron Van Sickle
Orville Walker
Greg Warner
Jennifer Warner



Russ White
Julie Wilson
Coleen Winn
Chris Worstell
Ben Zuk





NOT PICTURED:

Norma Baker
 Ronnie Boyle
 Patricia Lantis
 Mary Lou Martin
 Charles Pasfield
 John Rhoads
 Charlene Ruthenberg
 Stuart Smith
 Cliff Walker
 Gayle Walker
 Merlene Waltner
 Deb Wilson



Jeanette Brasher
 Dave Dimit

S
p
e
c
i
a
l
s



Judith DuChateau
 Mark Gilbreath
 Jean Golway
 Toni Gray
 Golda Johnson



Wendy Kim
 Jan Kindt
 Vivian Lawrence
 Janet McCauley
 Allyson Moon



Roger Moon
 Chris Storbeck
 William Wakefield
 Joy Will
 Karla Will



THE BEGINNING



Advance Preparation Is Key To Success



Though many students may not realize it, the college does not close down when they leave. Administrators, faculty, and staff are still busy in buildings across the campus. Evidence of their work could be seen in fresh paint, newly waxed and shining floors, memorandums and other information presented to students upon their arrival and full-length lectures the first day of class. Faculty members attended workshops as did resident advisors and directors.

As students joyfully left for long vacations at Christmas and Easter, administrators and staff prepared to buckle down and catch up on their work. The staff's continuing efforts kept the college running fairly smoothly all year.

Keith Starry, director of the food service, worked with the foods committee to plan special events throughout the year. Several "Make Your Own Banana Split" nights were held as well as international meals, steak nights, two formal dinners served by faculty, and make your own sandwich meals. At right Keith is shown topping off an ice cream mountain.



Lakeside Activities Lead To New Friends



It has become traditional to begin each school year with a picnic at the Winfield City Lake. Faculty members bring their families and carloads of students make the trip. As students cavort in the water, they begin to feel sorry for those people broiling in the sun. This pity extends to faculty as well as other students. Resident directors, deans, administrators, and students were thrown in the lake this year. When business manager Earl Spidel refused to leave his chair, the chair received a dunking also.

AT LEFT, John Hutchison finds time out of his busy Senior year to take a short nap and drink in the sun.



Not to be left out, The Rock Fell finds itself at the top of the Mound-at least for now.

Enrollment Increases Spring Semester



The final spring enrollment figures at SC reflect a total increase of 23 students over last fall's enrollment. The spring term enrollment was 668 compared to 645 in the fall. This increase was especially good since the general trend is for college enrollments to decline during the spring semester.

The breakdown of enrollment was as follows: freshmen, 155; sophomores, 139; juniors, 115; seniors, 132; post graduates, 17; specials (including St. Johns' students), 101; senior citizens, 7; and high school specials, 2.



Students Pursue Wide Range Of Activities



Honors Students Selected On The

The honors convocation honoring the class of '77 was held on April 25. The traditional program began with seniors, faculty, and administration climbing the 77 steps to Richardson Auditorium. Students on the Dean's Honor Roll, Junior Marshalls, Valedictorians, and Order of the Mound and Masterbuilder recipients were recognized. Dr. Laws was awarded the Student Council Faculty Citation. Dr. Dan Daniel gave the address. Other students were commended at the reception following the convocation.

Junior Marshalls, each with a 4.0 grade-point average, were Kris Brown, Don Courtney, Doug Gilbert, Beth Wilke, and Lyle Weinert.



ABOVE: Mike Fell was named Scholar of the year. Mike shared Valedictorian honors with his mother, Ardith Fell. **LEFT:** Those seniors named to "Who's Who Among Students" were Jerry Nixon, Jim Morgan, Mike Marion, Ivan Freeman, Greg Unruh, Becky O'Neal, Mike Fell, Brad Rymph, Mary Boyle, and Lori Ellison. Mike Burnett, Jan Faidley, and Craig Hartman were not pictured.

Several seniors were quite helpful in their departments as senior assistants. Senior assistants were: Paul Hobus, organic chemistry; Joe Ramsey, microbiology; Joe Schrag, zoology and comparative anatomy; Randy Duncan, biology; Mike Cargill, floriculture and botany; Mary Boyle, Spanish; Tim Hammer, debate; Orville Walker, jazz ensemble; Jan Faidley, concert band; Toni Gray, history; Becky O'Neal, history and political science; and Marianne Morris, mathematics.

e Basis Of Grades And Achievements

Order of the Mound is the honor given to the top ten per cent of the graduating class. Members of this elite group can be recognized by the purple sash across their gowns. Thirteen seniors of the class of 1977 were elected to the Order of the Mound.

PICTURED AT RIGHT:

Beverly Grunder, Susan Finney, Mary Boyle, Joe Schrag, Joe Ramsey, Tim Hammer, Jerry Nixon, Ardith Fell, Mike Fell, Brady Rymph, and Ivan Freeman.

NOT PICTURED: Mike Burnett and Jan Faidley.



The selection of Masterbuilders is a lengthy process designed to choose the six seniors who best typify the spirit of Southwestern. Each student council member nominates six seniors. This list of nominations then goes to the faculty who choose six from the list. The new slate of names is voted on by the student body, each voting for six seniors. Masterbuilders of 1977 are Jim Morgan, Mike Fell, Jim Fishback, Greg Unruh, and Mike Bishop.



Commencement Exercises Held May 15





FAR LEFT: Junior Marshalls Doug Gilbert, Lyle Weinert, Beth Wilke, Don Courtney, and Kris Brown show graduating seniors to their seats as they march in to the music of "Crown Imperial".

FAR LOWER LEFT: Faculty and administration walk in ahead of the seniors and take their places to the side of the platform.

LEFT: Valedictorians Mike and Ar-dith Fell, mother and son team, lead the seniors to Sonner Stadium. Following are Brad Rymph and Jan Faidley.

BELOW: Southwestern president Don Ruthenberg and St. John's president Michael Stelmachowicz joke before graduation. Stelmachowicz was the commencement speaker to the class of 77.



Graduation Is A Time To Reflect



ABOVE: Joe Riley Burns, chairman of the Board of Trustees, Michael Stelmachowicz, Don Ruthenberg, and J. Hamby Barton look out at the graduating class.

AT RIGHT: Brad Turner, Jim Dooley, Tom DeRuggiero, John Hutchison, and Greg Beckmeyer look as though they wonder what is to happen now.





AT LEFT: Steve Ruzich, Mike Marion and Steve Rogers relax after the band concert.

BELOW: Tim Hammer, Paul Hobus and Jerry Nixon share a laugh shortly after they graduate.

During graduation day there were many activities going on besides the actual commencement exercises. All weekend there were alumni reunions, a choir concert, jazz ensemble and band concerts. The Baccalaureate speaker this year was Rev. Carl Martin, who used to be the chaplain at Southwestern. Directly below are chickens which represent the two visitors present at commencement.



Index

A

Abdollahpour, Ali 62
Adkins, Darlene 32, 51, 54, 59, 60, 128
Alexander, Pam 142
Allard, Maria 84, 128
Allen, Walter 28
Anderson, Beth 32, 128
Anderson, Don 12, 19, 32, 156, 158, 162
Anderson, Ollis 67, 72, 84, 91, 106, 135
Andreas, Eric 5, 58, 128
Anthis, Grace 147
Archambeau, Ruth 5, 28
Archer, Phil 42, 74, 76, 79, 81, 84, 142
Arning, Jan 84
Atakpa, Mike 52, 63, 67, 72, 147
Audley, Pat 106, 147

B

Bachman, Denise 75, 84, 135
Bachus, Phil 52, 71, 77, 79, 147
Bacon, Kathie 135
Bagot, Robert 57, 128
Bailey, Brenda 36, 128
Baker, Ed 106, 128
Baker, Norma 153
Baker, Sulinda 37, 147
Banks, J. J. 12
Barker, Pat 54, 59, 135
Barnes, Jerry 5, 63, 128
Barnes, Dick 20
Barnett, Bonnie 57, 147
Barton, J. Hamby 13, 95, 156, 160, 164
Basinger, Dana 32, 81, 128
Bateman, Mary 27
Baumann, Carolyn 77, 80, 147
Bazil, Brett 106, 135
Beck, John 48, 49, 50, 51, 58, 71, 147, 157
Beckham, Tonya 57
Beckmeyer, Greg 106, 147, 164
Beckwith, Tracy 142
Beebe, David 73, 86, 106, 128
Beech, Olive Ann 12
Benney, Sue 135
Bennett, Tammy 87, 135
Berding, Myrtle 5, 66, 142
Berding, Tom 147
Bergdall, Bonnie 61, 76, 77, 79, 80, 84, 85, 96, 147

Bernally, Lauren 62
Bernard, Dorothy 14
Berndsen, Bernetta 27
Bever, Kim 84, 142
Bevis, Gavin 74, 84, 106, 147
Bing, Charles 74
Bishop, Mike 66, 72, 74, 77, 147, 161
Black, Joyce 147
Blake, Bruce 12
Blake, Steve 94, 128, 159
Blanchard, Carol 48, 71, 77, 82, 83, 142
Blatchley, Don 20, 156
Bliss, Cinda 75, 128
Bobo, Jana 21
Bobo, Richard 21, 156
Bonar, Diana 32, 78, 79, 81, 128, 146
Bonham, Gene 28, 29
Boone, Joyce 12
Borger, Clarence 12, 95
Boucher, Troy 23, 57, 158, 162
Bowling, Ty 106, 128
Boyer, Pam 58, 94, 135
Boyle, Mary 58, 76, 78, 94, 96, 144, 147, 160, 161
Boyle, Ronnie 153
Bradbury, Lou 147
Bradley, Paula 77, 93, 112, 113, 142
Brady, Ike 52, 73, 116, 117, 120, 142
Brasher, Jeanette 5, 28, 153
Brennan, Cindy 5, 135
Brennan, Debra 32, 128
Bright, Charles 20, 66, 156, 162
Broadhurst, Fran 13, 66, 85, 156
Broadhurst, William 12
Brooks, Hal 74, 128
Brooks, Randy 87, 106, 125, 135
Brooks, Sue 147
Brooks, Susan 147
Brooks, Susan S. 128
Brooks, Virgil 5, 90, 128, 157
Brown, Kris 142, 160, 162, 163
Brown, Mike 96, 142
Brown, Phillip 28
Brown, Warren 21, 160, 162
Brummett, Mike 79, 81, 142
Burgess, Jan 78, 93, 128
Burkett, Linda 147
Burks, LaMar 135

Burling, D'Aun 35, 82, 84, 142
Burnett, Larry 61, 116, 118, 122, 129
Burnett, Mike 51, 60, 86, 116, 120, 122, 147, 161
Burns, Joe Riley 12, 164
Burnside, Phil 79, 129
Butler, Becky 129
Butler, Tim 142

C

Callison, Norman 23, 46, 49, 50, 51, 71
Callison, Roxy 50
Campbell, Cindy 75, 129
Campbell, Sam 101, 142
Canuto, Terry 60, 62, 72, 129
Cargill, Mike 72, 148, 165
Carlson, Jim 61, 77, 82, 148
Carlson, Norma 28
Carr, Frank 28
Carrell, David 142
Cartwright, John 5, 32, 73, 84, 129
Casselmann, Claire 48, 49, 51, 57, 76, 77, 78, 79, 81, 82, 83, 86, 135
Cerrato, Brian 106, 148
Charles, Cecelia 62, 129
Charlton, Judy 22, 156
Cheney, Karla 54, 66, 79, 93, 135
Cherry, Gail 67, 86, 87, 135
Cherry, Rosemary 38, 67, 86, 87, 148
Clinesmith, Kenton 66
Cole, Ward 12
Coleman, Erle 91, 135
Coleman, Jill 148
Colvin, Charles 142
Conrod, Myrna 28
Conway, Leann 75, 129
Cook, Anne 47, 78, 82, 129, 134
Cook, Diane 38, 66, 148
Coon, Betty 32, 54, 61, 82, 142
Coon, Mary 32, 52, 53, 54, 61, 66, 82, 84, 93, 142
Cope, A. D. 22
Cornett, Carla 135
Courtney, Don 94, 142, 160, 162, 163
Cox, Norma 28
Craft, Terry 135
Craig, Peggy 32, 129

Crank, Bob 135
 Crawford, Cozy 57, 63, 79, 129
 Crawford, Cindy 148
 Crawford, Marvel 27
 Crawford, Sheryl 27
 Creed, Kelly 86, 142
 Creveling, David 129
 Crow, Jeff 28, 106, 135
 Crow, Norman 142

D

Daniel, Dan 22, 32, 156, 160
 Daniels, Tammie 69, 129
 Davidson, Davy 72, 77, 135
 Davis, Debra 142
 Davis, Virgene 28, 172
 Davison, Donnie 63, 90, 143
 Davison, Rex 52, 58, 59, 72, 82, 108, 148
 Daymude, Alan 46, 48, 49, 51, 71, 136
 Decker, Becky 61, 76, 77, 78, 84, 94, 96, 143
 Decker, Ralph 5, 14, 156, 158
 Dees, Darrel 5, 46, 49, 51, 60, 71, 77, 78, 79, 129
 Demas, Dodd 12, 148
 Dennis, Terry 59, 148, 150
 Denton, Kurt 78, 79, 81, 129
 Denton, Ronnie 36, 52, 66, 72, 126, 136
 DeRuggiero, Tom 27, 148, 164
 Deschaine, Terry 148
 Detter, Kim 36, 75, 84, 129
 Detter, Tim 64, 72, 77, 106, 136
 DeVore, Bob 39, 40, 65, 97, 129, 148
 Diacon, Todd 5, 129
 Diaz, Julie 28
 Dible, Dan 57, 61, 129
 Dible, Kathy 32, 129
 Dickerhoff, Richard 66, 72, 143
 Dimit, Dave 153
 Dimit, Paul 28
 Dixon, Ernest Jr. 12
 Docking, Robert 12
 Dooley, Jim 148, 164
 Doty, Tim 58, 143
 Downey, Brian 29, 48, 66, 71, 85, 148
 Downey, Joann 29, 50, 51, 71, 84
 Downum, Chris 72, 94, 108, 136
 Doyle, Pat 20
 Drake, Bryan 114, 115, 130

Dreier, Janelle 64, 75, 84, 130
 Drennan, Doug 73, 136
 Drennon, Monty 5, 27, 156
 Dubowsky, Lee 25, 156
 DuChateau, Judith 153
 Duncan, Randy (Sr.) 67, 72, 87, 148
 Duncan, Randy (So.) 57, 69, 92, 136
 Dunfee, Rich 13
 Dunlap, E. Dale 12
 Dutton, Kevin 148
 Dyke, Lynn 60, 82, 83, 84, 143

E

Eadens, Susan 84
 Eagleson, Bob 62, 148, 162
 Eastman, Betty 130
 Ebong, Dora 62
 Edens, Paul 79, 81, 109, 148
 Elam, Paul 74, 84, 130
 Elliott, Roland 15, 94, 156
 Ellison, Lori 85, 148, 160
 Embrey, Clara 16
 Engelen, Lizzy 62, 111, 136
 Engleking, Carey 82, 136
 Engleking, Kim 82, 83, 90, 143
 Evans, Jennie 29
 Evans, Mildred 28
 Evans, Paul 28
 Evans, Richard 19, 156, 158
 Evans, Sheryl 36, 75, 130
 Evelle, Wilson 136
 Everly, Joe 12
 Ewert, Pearl 27

F

Faidley, Jan 76, 77, 78, 79, 81, 149, 161, 163
 Farnsworth, Jane 149
 Fell, Ardith 96, 149, 160, 161, 163
 Fell, Mike 49, 67, 90, 149, 160, 161, 163, 172
 Fell, Tom 39, 86, 87, 90, 126, 136
 Felts, Lynn 149
 Feste, Connie 38, 57, 61, 82, 136
 Finney, Susan 39, 64, 102, 149, 161
 Firebaugh, Larry 116, 143
 Fish, Ron 73, 136
 Fishback, Jim 12, 42, 43, 56, 59, 60, 109, 149, 160, 161
 Flaming, Bill 16, 156, 162
 Flavin, Jane 18, 65, 156, 162

Flickinger, Mardon 130
 Flint, Jane 130
 Flippo, Margie 28
 Flippo, Walter 28
 Floyd, Larry 72, 86, 116, 118, 143
 Fogelberg, Glenn 57, 130, 132
 Folck, Lee Anne 75, 84, 136
 Forest, Joe 38, 64, 77, 80, 136
 Foster, Ed 18, 62, 156
 Freed, Kris 4, 76, 77, 79, 80, 81, 143
 Freeman, Ivan 67, 72, 87, 94, 108, 124, 149, 160, 161
 French, Kevin 74, 84, 130
 Friedrich, Jeff 84, 114, 115, 130
 Fruits, Jessie 27
 Fulcher, Laura 63, 143

G

Gabriel, Tony 130
 Gaiser, Terry 57, 78, 79, 81, 82, 83, 136, 158
 Garces, Cesar 52, 62, 136
 Garces, Jorge 149, 162
 Garces, Katina 149
 Garibay, Lillian 39, 62, 77, 80, 149
 Gilbert, Doug 58, 66, 143, 160, 162, 163
 Gilbreath, Lewis 15, 94, 162
 Gilbreath, Mark 33, 153
 Gilmartin, Tom 72, 136
 Gish, Steve 84
 Glenn, Leona 28
 Glenn, Lyle 12
 Goering, Anne 46, 49, 56, 57, 130
 Golladay, Charles 79, 84, 136
 Golway, Jean 153
 Goodnight, Elsie 28
 Gordon, Kern 12
 Gossett, Kathy 32, 75, 110, 130
 Gourlay, Tony 72, 136
 Graber, Tom 27
 Graeser, Bev 85, 130
 Graeser, Ellen 58, 76, 78, 143, 144
 Graham, Keith 65, 72, 149
 Graham, Peggy 86, 130
 Graham, Teresa 86, 149
 Graves, Melodie 54, 82, 130
 Gray, Toni 58, 78, 82, 153
 Gray, Tony 106, 130
 Gray, Wallace 17, 35, 57, 148, 156, 162
 Green, Mary 3, 47, 48, 50, 51,

58, 60, 71, 143
Greer, Paul 149
Grimmett, Felix 114, 115, 119,
149
Groene, Sondra 28
Grimwood, Alice 76, 77, 143
Gropper, Cindy 32, 85, 130
Grunder, Beverly 149, 160

H

Haas, Lesa 79, 136
Hackathorn, Candy 34, 143
Hadley, Karen 99, 137
Hall, Greg 94, 106, 149
Halverstadt, John 57, 58
Hamilton, Robert 130
Hamm, Betty 28
Hamm, Cindy 67, 87, 137
Hammel, Brad 143
Hammer, Tim 36, 69, 149, 161,
165
Handley, Kim 75, 87, 110, 123,
137
Hanna, Annetta 29
Hanna, Ralph 52, 53, 66, 72,
86, 106, 116, 143
Hanson, Gleva 23, 36, 62, 162
Harkrader, Gary 73, 106, 130
Hardin, Annie 28
Harmes, Shirley 28, 78
Harris, Carla 75, 84, 149, 162
Harris, Jack 12
Harris, Stephanie 77, 82, 135,
140
Hartley, Kevin 57, 143
Hartman, Craig 35, 60, 61, 82,
149
Hartman, Curt 61, 93, 124, 130
Hatfield, Larry 73, 143
Heck, Doug 135
Heck, Jim 32, 72, 84, 85, 149
Heibsch, Kenneth 12
Heinen, Warren 32, 66, 90, 149
Henkle, Doug 5, 77, 80, 130
Herd, Sid 106, 143
Herrin, David 46, 49, 50, 77,
114, 115, 137
Hessini, Marguerite 12, 23
Hickman, Kathy 28
Hickok, Susan 32, 85, 130
Hill, Karen 130
Hinderson, Bud 28
Hinegardner, Craig 137
Hinshaw, Gaylord 90, 106, 130,
157
Hintz, Kelly 144
Hittle, Vicki 144

Hobbs, Brian 32, 56, 74, 79, 81,
84, 140, 149, 165
Hobbs, Karen 67, 78, 79, 81,
137
Hobus, Paul 149, 165
Hoffine, Jan 1, 54, 66, 82, 94,
144, 172
Holman, Brad 4, 149
Holmes, Mike 144
Hook, Celia 149
Hook, Shelly 5, 130
Horn, Gary 23, 36, 66
Hostetler, Mike 27
Houser, Rob 61, 72, 84, 86, 87,
149
Howard, LuAnn 32, 75, 76, 79,
84, 137, 146
Howie, Fred 116, 130
Huber, Manly 24, 95, 156, 162
Hunter, Charles 24
Hutchison, John 42, 43, 87,
106, 149, 157, 164, 172
Hutmacher, Betty 137, 158
Hutmacher, Ed 66, 84, 137
Hutto, Ron 108, 149, 162

I

Ingerson, Myrtle 28, 172

J

Jahay, Carmen 86, 144
Jahay, Ernie 106, 144
Jewell, Bob 73, 150
Jobe, Mary 28
Johns, Susan 77, 78, 96, 137
Johnson, Chris 72, 116, 126,
137
Johnson, DeAun 75, 137
Johnson, Della 130
Johnson, Golda 153
Johnson, J. H. 12
Johnson, Phyllis 25, 34, 156
Johnson, Rex 57, 61, 66, 144
Jones, Don 116, 118, 122, 137,
159
Jones, Julie 5, 137
Jones, Paulette 150
Jones, Priscilla 65, 137
Jones, Rickie 116, 120, 122,
130
Juden, Randy 3, 46, 47, 49, 50,
51, 71, 77, 79, 81, 130

K

Kabba, Patrick 150
Kanitz, Sharon 36, 75, 112,
113, 131

Kaufman, David 86, 144
Kearns, Becky 150
Kearns, Eddie 72, 137
Kearns, Kody 57, 131
Kedigh, Larry 42, 43, 60, 72,
84, 137
Keely, Degee 79, 87, 112, 113,
144
Keith, W. W. 12
Keller, Hettie 150
Kenyon, Jason 46, 48, 57, 137
Kepfinger, Anita 137
Kerr, Deb 86, 123, 137
Kesler, Stephanie 34, 51, 78,
86, 131
Kessler, Jon 77, 78, 79, 81, 94,
131
Kieler, Harold 12
Kim, Wendy 153
Kindt, Jan 28, 153
King, David 84, 114, 115, 131
King, Pam 65, 150
King, Tom 57, 90, 131
King, Wayne 40, 42, 43, 66,
136, 143, 144
Kingdon, Kay 77, 79, 82, 131
Kiser, Willard 12
Kleeberg, Karl 74, 106, 138
Kliwer, Millie 28
Knickerbocker, Kevin 77
Knollenberg, Steve 144
Kolling, Elizabeth 61, 101, 138
Kolling, Orland 24, 156
Koroma, Essa 144
Kramer, Judy 66, 110, 138
Kraus, Jan 48, 49, 51, 71, 76,
77, 79, 94, 112, 113, 138
Kraus, Ken 77, 114, 115, 144
Kreie, Dana 138
Kreie, Rod 66, 72, 150
Krug, Terry 131

L

Laber, Janice 76, 77, 86, 144
Lacey, Brenda 131
Lambdin, Larry 144
Lambing, Danny 84, 87, 144
Lantis, Patricia 153
Laughter, Ernest 62, 138
Lawrence, Anita 150
Lawrence, Vivian 28, 153
Laws, Leonard 25, 34, 37, 156,
160, 162
Lee, Ron 131
Leftwich, Maxine 12
LeHew, Mary 150
Lenhart, Michael 138

Lewellan, Joy 84, 123, 131, 141
 Lewis, Joy 54, 59, 90, 131
 Lewis, Paul 42, 43, 109, 150
 Littell, Jim 86, 144
 Lockwood, Ken 73, 84, 106, 131
 Long, Ed 150
 Long, Lisa 144
 Lowe, Ricky 73
 Luton, Tom 28

M

MacNair, Diane 47, 64, 102, 150
 MacNair, Mickey 72, 116, 150
 Magnusson, Marilyn 32, 64, 84, 85, 102, 138
 Maiale, Vincent 131
 Makoski, Sonja 38, 102, 138
 Mangiamale, Tom 33, 150
 Mann, Cinda 90, 131, 133
 Marion, Mike 49, 51, 57, 76, 77, 79, 80, 81, 82, 83, 150, 160, 165
 Markley, Alice 28
 Marsh, Bob 56, 87, 109, 138
 Martin, Mary Lou 153
 Marx, Carol 75, 150
 Massey, Gay 138
 Matthaui, Paul 12
 Matthew, Dave 12
 Matthew, Janis 61, 77, 129, 135
 Maxton, Jim 46, 77, 131, 136
 May, Steve 144
 Mayo, Steve 57, 58, 131
 Mazzanti, JoAnn 29
 McCann, Rob 79, 138
 McCauley, Janet 153
 McCauley, Charlotte 28
 McConnell, Bob 5, 147, 158
 McCulloch, Tim 57, 138
 McFall, Glenn 32, 60, 85, 87, 106, 107, 150
 McGill, Duane 12
 McGinnis, Raymond 28
 McGowan, Dan 66, 138
 McGowan, John 150
 McIntyre, Kent 131
 McIntyre, Sharon 138
 McKeon, Winston 78, 79, 82, 83, 138
 McKinley, Ian 147
 McMillan, Lorene 28
 McNeish, George 12
 McStravog, Mike 150
 Meier, Barb 46, 48, 50, 60, 71, 84, 97, 138

Metcalf, Sue 86, 150
 Mettling, Thane 72, 106, 107, 131
 Meyer, Marilyn 75, 138
 Miers, Kitty 151
 Mignone, Lou 60, 86, 106, 125, 151
 Milburn, Glenn 12
 Miller, Beth 38, 39, 126, 138
 Miller, Doug 151
 Mills, Lonnie 60, 65, 92, 151
 Minton, Darrell 131
 Moberg, Carley 150
 Moberg, Melissa 75, 84, 145
 Mogab, Karen 57, 93, 132
 Moon, Allyson 29, 47, 48, 51, 71, 153
 Moon, Geoffrey 92
 Moon, Janelle 28
 Moon, Roger 29, 50, 153
 Moore, Byron 16
 Moore, Carol 58, 138
 Moore, Kim 12
 Moore, Suzanne 151
 Moots, Clark 12
 Morgan, Bob 72, 77, 82, 86, 106, 132
 Morgan, Jim 56, 61, 67, 72, 77, 87, 94, 108, 151, 160, 161
 Morris, Marianne 151
 Mousley, Tim 141, 145
 Mugler, Donna 139
 Mullen, Orlan 12
 Mulvaney, Kevin 32
 Murphy, Leonard 62, 120, 132
 Myers, Margie 60, 151, 152

N

Nash, Karen 63, 78, 139
 Nash, Robert 63, 116, 117, 151
 Nation, Paul 86, 106, 151
 Neely, Diana 33, 39, 59, 151
 Nelson, Elva 5, 145
 Nelson, Harold 12
 Nethery, Annette 51, 58
 Newton, Darwin 132
 Newton, Kay 4, 29
 Nichols, Dave 42, 90, 106, 145, 159
 Nichols, Pauline 151
 Nienhuser, Dee 145
 Nittler, Randy 52, 73, 79, 84, 151
 Nixon, Diana 86, 139
 Nixon, Jerry 68, 86, 87, 151, 160, 161, 165
 Nixon, Linda 46, 48, 49, 67, 71,

94, 97, 139
 Nolte, Jerre 5, 72, 77, 132
 Nulik, Julie 93, 132
 Nutter, Dan 18, 156, 162

O

Okokon, Christiana 62, 132
 Okokon, Effiong 62, 151
 Olivas, Roger 87, 106, 139
 O'Neal, Becky 1, 32, 52, 53, 54, 59, 68, 84, 100, 151, 160, 172
 O'Neal, Debra 36, 132
 Ortman, Blake 108, 147
 Osborn, Chester 12

P

Palmer, Brenda 28
 Palmer, Donna 84, 145, 158
 Palmer, Rodney 28
 Pappas, James 5, 139
 Paramore, Jim 2, 26, 106, 114, 156
 Paris, Loretta 5, 132
 Park, Deb 51, 69, 92, 142
 Parker, Jean 139
 Parsons, Kathy 32
 Partin, Chrystal 35, 64, 75, 132
 Pasfield, Chip 153
 Paton, Kay 151
 Paulin, John 18, 33, 61, 78, 82, 83, 112, 156, 158
 Pederson, Ellen 46, 71, 79, 94, 132
 Penninger, Penny 51
 Perkins, Krista 147
 Peters, Emmanuel 58, 62, 128
 Peterson, Bill 51, 57, 76, 77, 78, 80, 132, 138
 Peterson, Rick 36, 69, 86, 87, 139
 Peterson, Rick (Pete) 86, 116, 117, 121, 139
 Phillips, Steve 32, 139
 Phillips, Vicki 28
 Phipps, Doris 62, 94, 139
 Piel, Cindy 132
 Pierce, R. H. 12
 Popplewell, Eddie 87, 106, 145
 Post, Orvleen 132
 Potter, Ray 73
 Pounds, Jay 12

Q

Quibell, Steve 74, 84, 132
 Quillen, Denise 75, 151

R

Raines, Gerald 156
 Raines, Vicki 60, 86, 139
 Ramsey, Joe 58, 94, 151
 Randall, Jane 14, 32, 66, 110, 111, 139
 Rankin, Duane 26, 106, 156
 Rawlings, Teresa 5, 79, 84, 110, 123, 132
 Rebold, Joe 27
 Reed, Hal 100
 Reed, Susan 64, 75, 84, 139
 Reeder, Kay 5, 79, 94, 132
 Reimer, Chris 59, 84, 90, 133
 Renner, Alan 72, 79, 81
 Renner, Steve 42, 87, 108, 125, 151
 ReQua, Renee 75, 133, 159
 ReQua, Kathy 26, 34, 111, 156
 Reusser, Randy 57, 77, 133, 157, 159
 Rhea, Jean 87
 Rhoads, John 153
 Richardson, Ann 86, 149
 Richert, Dar 84, 110, 111, 123, 145
 Rickard, John 12
 Rindfleisch, Rickey 145
 Rinkenbaugh, Bill 57, 73, 84
 Rivers, Roland 119, 145
 Roberts, Gary 14, 42, 56, 94
 Robinson, Forrest 12
 Robinson, Jimmie 36, 69, 72, 86, 133, 158
 Rodgers, Veda 57
 Rodriguez, Alfredo 22, 63, 97, 162
 Roe, Marsha 36, 133
 Rogers, David 83, 139
 Rogers, Sharon 139
 Rogers, Steve 76, 79, 151, 165
 Rosecrans, Steve 72, 126
 Rothe, Randy 57, 90, 133, 159
 Roy, Lena 36, 62
 Ruthenberg, Charlene 153
 Ruthenberg, Don 12, 34, 94, 95, 98, 99, 156, 160, 163, 164
 Ruthenberg, Donnell 139
 Ruzich, Steve 4, 47, 48, 57, 76, 79, 81, 151, 165
 Ryker, Mark 133
 Rymph, Brad 5, 58, 69, 82, 94, 151, 160, 161, 163, 172
 Rymph, Carol 82, 139
 Rymph, Karen 61, 68, 82, 93, 133

S

Salm, Ed 19
 Santos, Harleen 36, 133
 Scheffler, Ron 12
 Scheurich, Esther 133
 Schmidt, Phil 17, 32, 158, 162
 Schneckenburger, Larry 42, 43, 73, 84, 106, 133
 Schoch, Waynette 32, 38, 64, 68, 102, 145
 Schou, Tom 66, 77, 83, 84, 85, 139
 Schrag, Joe 61, 67, 87, 147, 161
 Schroll, Becky 56, 82, 84, 110, 123, 145
 Schroll, Neil 84
 Schuster, Marci 133
 Schwantes, Viola 2, 14
 Scott, Louise 27
 Scott, Margaret 27
 Scovel, Susan 94, 139
 Seibel, David 50, 140
 Seley, Margarita 79
 Shaffer, Rick 72, 116, 118, 133
 Shay, Denise 51, 84, 85, 140
 Shepard, Con 109, 116, 145
 Sherman, Linda 62, 133
 Sherman, Nancy 145
 Sherring, ViJay 39, 40, 52, 53, 54, 61, 70, 140
 Sherring, Vineeta 62, 64, 140
 Sherwood, Denise 152
 Shinozaki, Yutaka 17, 148, 152
 Shively, Barbara 15
 Shoemaker, John 17, 156, 158
 Shore, Judy 145
 Short, Melvin 12
 Short, Steve 5, 50, 52, 60, 64, 77, 85, 91, 145
 Shrader, Yvonne 28
 Shuler, William 12
 Siefkes, Kelly 64, 106, 140
 Simons, Hal 133
 Simonton, Mona 145
 Simpson, John 90, 133
 Smith, Alexis, 145
 Smith, Arthur 12
 Smith, Judy 75, 152
 Smith, Karen 145
 Smith, Larry 25
 Smith, Pam 67, 75, 152
 Smith, Roy E. 12
 Smith, Stuart 153
 Snell, Barbara 37, 83, 146
 Snyder, Dave 76, 79, 81, 146

Snyder, Melinda 143, 146
 Soble, Warren 20
 Spearow, Kathy 25, 37
 Spencer, Carole 75, 84, 131, 146
 Spidel, Earl 14, 156, 157
 Stahlecker, Tracy 5, 81, 90, 133
 Standerfer, James 133
 Starry, Jennie 5, 28, 152, 158
 Starry, Keith 27, 156
 Stepe, Uldis 96, 146
 Stephens, Bill 26, 109, 116, 119
 Stephens, Howard 2, 15, 172
 Stinson, Bill 72, 87, 106, 116, 140
 Stinson, Jim 140
 Stokes, Sharon 142
 Stokes, Willie 106, 142
 Stone, Mary 152
 Stonebraker, Gail 84, 85, 87, 112, 113, 152
 Storbeck, Chris 153
 Strand, Jim 21, 78, 156, 162
 Strickland, Lonnie 84, 106, 120, 142
 Sutton, Judi 28
 Sweaney, Cindy 76, 78, 79, 138, 140
 Swope, Nancy 78, 140
 Sympson, Sarah Jo 28, 172

T

Talbert, Nancy 28, 146
 Tasker, David 87, 106, 107, 140
 Tasker, Keith 87, 140
 Taylor, Jennie 77, 140
 Temple, Lisa 64, 76, 77, 79, 102, 152
 Templar, George 12
 Tencleve, Debra 133
 Tennal, Kevin 124, 140
 Tennal, Melody 62, 140
 Tharp, Lou 27
 Thomas, Judy 152
 Thompson, Mark 134
 Thompson, Max 24, 33, 72
 Thompson, Theresa 146
 Thompson, Richard 134
 Thorne, Carol 52, 53, 61, 85, 152
 Thorne, Ralph 12
 Thornton, Terrie 84, 87, 146
 Tillman, Tim 140
 Toevs, Frankie 12
 Topper, Wilma 28
 Trollman, Mike 21, 81

Tucker, Wayne 21, 41, 76, 81, 156
 Turner, Brad 60, 84, 86, 152, 164
 Turner, David 5, 116, 118, 120, 134
 Turner, Marilyn 146
 Turrentine, Mark 72, 87, 140
 Tutzauer, Carol 69
 Tutzauer, Frank 69

U

Umana, Ukeme 63, 72, 134
 Unruh, Greg 52, 53, 67, 72, 77, 87, 94, 126, 131, 152, 160
 Ussey, Craig 47, 48, 49, 50, 51, 56, 57, 71, 76, 77, 140
 Utt, Kendal 61, 83, 152
 Utt, Kenna 110, 123, 146

V

Valyer, Dick 18, 156
 Van Sickle, Ron 33, 92, 152, 157
 Vanderhoof, Lovina 36, 69, 86, 134
 Vaughters, Kevin 140
 Vodehnal, Susan 76, 78, 79, 146
 Voth, Linda 3, 36, 46, 69, 134

W

Wacker, Donna 32, 84, 134
 Wasleigh, Sherry 58, 134
 Wakefield, William 153
 Waite, Byron 12
 Waldschmidt, David 142
 Walker, Cathy 76, 79, 81, 138, 140
 Walker, Cliff 153
 Walker, Gayle 153
 Walker, Nate 63, 140
 Walker, Orville 79, 81, 152
 Wallace, Spencer 141
 Walter, Greg 5, 94, 134
 Waller, Kendall 141
 Wallrabenstein, Tom 16, 98, 156
 Waltner, Merlene 78, 79, 153
 Wallingford, Pat 12
 Wamsley, Craig 5, 79, 94, 108, 134
 Wanzer, Dana 65, 141
 Waples, Marty 66, 72, 146
 Ward, Arlan 28
 Ward, Earl 141
 Warner, Greg 57, 152

Warner, Jennifer 48, 57, 76, 77, 152
 Warren, Joe 79, 141
 Warren, Sarah 146
 Watson, Irene 28, 101
 Watt, Jan 141
 Weaver, Trent 60, 116, 117, 120, 121, 146
 Weinert, Lyle 27, 56, 66, 146, 160, 162, 163
 Welch, Grace 87, 110, 111, 113, 123, 141
 Wells, Darwin 12
 Wencel, Grant 60, 64, 84, 141
 Wesbrooks, Pam 75, 77, 84, 134
 Wesley, Cindy 46, 47, 48, 49, 51, 71, 86, 141
 Wesley, Louise 28
 Wetterhus, Kris 147
 White, Robert 2, 78
 White, Giselle 79, 146
 White, Judy 58, 59, 80, 141
 White, Laurie 59, 84, 112, 113, 134, 139
 White, Micky 33, 75, 84, 85, 134
 White, Russ 87, 152
 White, Stephanie 134
 Whitehill, Dave 72, 116, 134
 Widler, Mike 90, 143, 146
 Widner, Clarence 28
 Wilgers, Larry 2, 17, 156, 158, 162
 Wilgers, Maija 2, 16, 172
 Wilke, Beth 66, 86, 112, 113, 146, 160, 162, 163
 Wilke, Paul 69, 72, 86, 116, 117, 120, 121, 122, 134
 Wilke, Richard 12
 Wilke, Steve 86, 116, 117, 121, 122, 146
 Will, Joy 153
 Will, Karla 153
 Will, Kevin 72, 77, 80, 134
 Williams, Anne 4, 39, 62, 146
 Williams, Gene 57, 134
 Williams, Jim 36, 48, 57, 58, 59, 69, 79, 92, 137, 141
 Williams, Judy 28
 Williams, Ron 12
 Williams, Ross 21, 78, 156, 162
 Williams, Tom 79, 145, 147
 Williams, Tommy 116, 118, 121, 134
 Wills, Dee Ann 3, 46, 47, 48, 51,

56, 59, 71, 77, 84, 86, 141
 Wilson, Bunny 110, 123, 134
 Wilson, Charley 87, 100, 106, 134
 Wilson, Deborah 153
 Wilson, Esther 39, 60, 61, 67, 87, 94, 112, 113, 123, 141
 Wilson, Julie 66, 87, 152
 Wilson, Robert 36, 69, 134
 Wimmer, Bev 33, 75, 84, 134
 Wimmer, Bob 2, 12, 24, 33, 94, 95, 156, 162
 Winn, Coleen 67, 75, 84, 152
 Witter, J. C. 4
 Wolfe, Leonard 73, 116, 141
 Wolfe, Mike 1, 19, 66, 156
 Woods, Janine 74, 141
 Wooldridge, Jon 32, 57, 136, 146
 Wooldridge, Warren 21, 77, 156, 162
 Worstell, Chris 152
 Wright, Will 12
 Wroten, Helen 22, 94, 162
 Wyckoff, Kris 134

Y

Yager, Dalvin 69, 79, 94, 134
 Yazzie, Judy 62, 134
 Yearout, Kim 87, 101, 123, 141

Z

Zambrano, Ruth 79
 Zollars, Gayle 110, 141
 Zuk, Ben 106, 107, 152

We Walk Into The Future



The staff would like to dedicate **Moundbuilder '77** to **Maija Wilgers**; without her help this book could not have been published. Many of the pictures in the book were taken and printed especially for the yearbook by Maija in addition to her work as news bureau director.

Credit must also be given to **Howard Stephens** for his technical advice, pictures, and assistance. Many other people went out of their way to help the staff and while it is not possible to name them all, I would like to give special thanks to **Sarah Jo Sympson, Virgene Davis, Myrtle Ingerson, and Brad Rymph. Mike Fell** is

responsible for the drawing of the Mound which we feel adds greatly to the story of the Mound.

Assistant editor, **Becky O'Neal**, sacrificed sleep and other activities many times in order to meet a deadline. Other staff members spent much time in arranging pictures and obtaining information. We hope you enjoy this yearbook now and in the future. Most of the credit for the book should be given to the above people who made it happen. Thank you all for helping to produce **Moundbuilder '77**.

Jan Hoffine, Editor

On The Paths We Build Today

