

# The Moundbuilder



# PEOPLE





“

I get by with a  
little help from my  
friends.

Paul McCartney of the  
Beatles

”

# SENIORS



Linda Allen  
Cambridge, KS  
Social Work



Freida Andrews  
Winfield, KS  
Social Work



Julie Arterburn  
Savanna, OK  
Elementary Education



Marion Askrens  
Wellington, KS  
General Studies



Marsha Baker  
Cambridge, KS  
Nursing



Paulo Barbour  
Wichita, KS  
Business



Jennifer Barnes  
Liberal, KS  
Social Work



Neil Bass  
Lakeland, FL  
Biology



Jason Belden  
Mulvane, KS  
Biology



Chrissy Benecke  
Wellington, KS  
Elementary Education



Tim Best  
Lyons, KS  
Elementary Education



Justin Branine  
Eureka, KS  
Biology



Lori Branine  
Mulvane, KS  
Elementary Education



Cathy Bruton  
Arkansas City, KS  
Elementary Education



Matt Buchanan  
Dodge City, KS  
Biology



Scott Bugbee  
Quinter, KS  
Biology



Janell Calhoun  
Wichita, KS  
HPER



Jessica Callison  
Winfield, KS  
Biology





**Greg Campbell**  
Fresno, CA  
Mass Communications



**Jeanene Carnes**  
Winfield, KS  
Social Work



**Sherry Carson**  
Oxford, KS  
Elementary Education



**Richard Carter**  
Wellington, KS  
Religion



**Ginger Cauble**  
Sedgwick, KS  
Chemistry



**Jorge Cermeno**  
Mercedes, TX  
HPRE



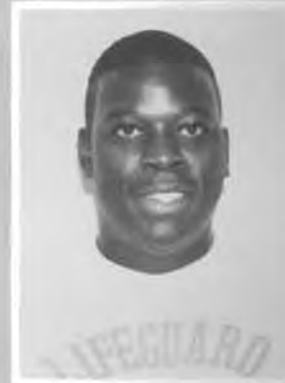
**David Chalmers**  
Winfield, KS  
Nursing



**Sharon Chuvala**  
Winfield, KS  
Nursing



**Karen Clum**  
Conway Springs, KS  
English



**Clifton Coleman**  
Tyler, TX  
HPRE



**Robert Coleman**  
Miami, FL  
Political Science



**Willie Coleman**  
Covington, LA  
Sociology



**Noel Concepcion**  
Bronx, NY  
Sociology



**Terry Cosby**  
Derby, KS  
Social Work



**Keri Cowel**  
Johnson, KS  
Elementary Education



**Jeff Creach**  
Overland Park, KS  
Mass Communications



**Roger Crossman**  
Arkansas City, KS  
Business



**Jim Cunningham**  
Neodesha, KS  
Social Work



**Brenda Defore**  
Winfield, KS  
Computer Science



**Bart Dennett**  
Oxford, KS  
Physics?



**Bryan Dennett**  
Augusta, KS  
Biology



**Mark Detter**  
Seattle, WA  
Business



**Jeff Dexter**  
Winfield, KS  
Biology



**Jennifer Dexter**  
Udall, KS  
Business



**Jessica Dickinson**  
Wellington, KS  
Elementary Education



**Jason Diseker**  
Liberal, KS  
Biology



**Kristen Doctor**  
Wellington, KS  
Business



**Kelli Domangue**  
Winfield, KS  
Business



**Stephanie Drennan**  
Winfield, KS  
Elementary Education



**Janean Duncan**  
Wichita, KS  
Nursing



**Brian Dutton**  
Winfield, KS  
Criminal Justice



**Matt Eads**  
Winfield, KS  
HPRE



**Lisa Eaglin**  
Winfield, KS  
Elementary Education



**Barbara Easterly**  
Wellington, KS  
General Studies



**Kelly Evans**  
Winfield, KS  
Business



**Justin Feldman**  
Wichita, KS  
HPRE



**Bobbie Finch**  
Arkansas City, KS  
History



**Suzanne Fiske**  
Olathe, KS  
Computer Science



**Tosca Ford**  
Heavener, OK  
International Business



**Sean Forehand**  
St. Petersburg, FL  
Business



Kim Fort  
Dodge City, KS  
Biology



Doug Frahm  
Wichita, KS  
Chemistry



Donna Frazier  
Winfield, KS  
Nursing



Megan Gannon  
Monroe, LA  
Elementary Education



Nick Garcia  
St. John, KS  
HPRE



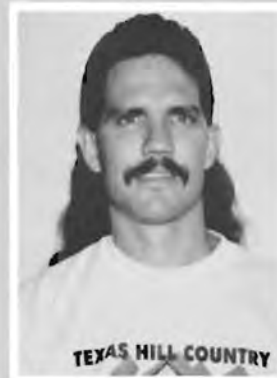
Jana Gaston  
Houston, TX  
Social Work



Monty Gatton  
Burden, KS  
HPER



Tammy Gatton  
Burden, KS  
Elementary Education



Richard Gerdel  
Arkansas City, KS  
Math



Judy Gifford  
Belle Plaine, KS  
General Studies



DeeAnn Goodson  
Arkansas City, KS  
Business Education



Stu Graham  
Winfield, KS  
English/Theater Education



Cedric Green  
Patterson, LA  
Business



Fred Green  
Tyler, TX  
HPRE



Tamra Green  
Eldorado, KS  
Nursing



Cindy Harman  
Rock, KS  
Elementary Education



Ambra Harper  
Arkansas City, KS  
Elementary Education



Wilda Harsh  
Argonia, KS  
Nursing



Rhonda Heim  
Arkansas City, KS  
Elementary Education



Traci Henley  
Ada, OK  
HPRE





**Barb Henthorn**  
Tulsa, OK  
Theatre



**Gina Heyen**  
Douglass, KS  
Elementary Education



**Tony Holmes**  
South Hill, VA  
Social Work



**Carmen Hopkins**  
Wichita, KS  
Economics



**Curtis Horton**  
Flat Rock, AL  
HPRE



**Gerald Houser**  
Douglass, KS  
Social Work



**Brent Howard**  
Amarillo, TX  
Sociology / Anthropology



**Brian Howard**  
Winfield, KS  
History



**Mary Hynd**  
Arkansas City, KS  
Nursing



**Mary Irvin**  
Arkansas City, KS  
Nursing



**Shirley Irvin**  
Arkansas City, KS  
Nursing



**Adel Ishak**  
Arkansas City, KS  
Computer Science



**Stan Jackson**  
Boynton Beach, FL  
General Studies



**Robin Jenkins**  
Fort Myers, FL  
Social Work



**Mary Jennings**  
Winfield, KS  
Biology



**Robert Jewett**  
Longmont, CO  
Business



**Ellen Johnson**  
Winfield, KS  
Nursing



**Rachelle Johnson**  
Winfield, KS  
English



**Suzanne Johnson**  
Burrton, KS  
Business



**Anita Jones**  
Winfield, KS  
History



**Andy Jordan**  
Ft. Sam Houston, TX  
Sociology



**Travis Jordan**  
Arkansas City, KS  
Biology



**Dawn Kelley**  
Winfield, KS  
Biology



**Shari Kennedy**  
Lyons, KS  
Nursing



**Paul King**  
Winfield, KS  
Biology



**Jeff Kough**  
Winfield, KS  
Business



**Lara Kratochvil**  
Udall, KS  
Mathematics Education



**Julie Kratt**  
Arkansas City, KS  
English Education



**Shawna Lampe**  
Winfield, KS  
Nursing



**Michelle Lance**  
Rose Hill, KS  
Nursing



**Mary Landry**  
Arkansas City, KS  
Elementary Education



**Claudia Lawson**  
Winfield, KS  
Biology Education



**Thad Leffingwell**  
Elkhart, KS  
Biology



**Trevor Leffingwell**  
Elkhart, KS  
Mass Communications



**J.J. Leonard**  
Winfield, KS  
Criminal Justice



**Roletha Looney**  
Arkansas City, KS  
Elementary Education



**Eric Lybarger**  
Winfield, KS  
Mass Communications



**Ruth McCauley**  
Winfield, KS  
Chemistry Education



**Roger McCune**  
Wellington, KS  
EMICT



**Steven McGlasson**  
Arkansas City, KS  
Computer Science





**Richard McHaffie**  
*Arkansas City, KS*  
*Business*



**Vicki McKain**  
*Salina, KS*  
*Sociology*



**Stacy McLaughlin**  
*Milroy, PA*  
*Elementary Education*



**Jerome Maendele**  
*Effingham, KS*  
*Business*



**Barbara Malone**  
*Arkansas City, KS*  
*Social Work*



**Paulette Mar**  
*El Dorado, KS*  
*Nursing*



**Anna Marczynski**  
*Udall, KS*  
*Social Work*



**Morgan Marshall**  
*Peabody, KS*  
*Biology*



**Kris Martin**  
*Ponca City, OK*  
*Biology/Chemistry*



**Carol Maxwell**  
*Arkansas City, KS*  
*Biology*



**Kim Means**  
*Cambridge, KS*  
*Elementary Education*



**Adrienne Merritt**  
*Shawnee, KS*  
*Elementary Education*



**Valerie Merrow**  
*Arkansas City, KS*  
*Business*



**Becky Metz**  
*Wellington, KS*  
*Nursing*



**Dawn Miller**  
*Winfield, KS*  
*Nursing*



**Lorie Miller**  
*Winfield, KS*  
*Elementary Education*



**Kenneth Moberg**  
*Dexter, KS*  
*Mathematics Education*



**Maureen Mooore**  
*Burden, KS*  
*Human Resources*



**Phil Moorhouse**  
*Winfield, KS*  
*Biology*



**Mike Mosley**  
*Mt. Pleasant, TX*  
*Business*



**Aaron Murray**  
Wichita, KS  
Biology



**Kristy Needham**  
Cheney, KS  
Biology



**Marc Needham**  
Cheney, KS  
Biology



**Kim Newlon**  
Liberal, KS  
Elementary Education



**Lonnie Nichols**  
Winfield, KS  
Public Relations



**Jana Nittler**  
Arkansas City, KS  
Social Work



**Keith Nubine**  
Winfield, KS  
General Studies



**Tad Nuce**  
Augusta, KS  
Social Studies Education



**Ty Partridge**  
Hutchinson, KS  
Psychology



**Dave Pawlowski**  
Mt. Holly, NJ  
Business



**Pam Perez**  
Winfield, KS  
Psychology



**Heath Perry**  
West Mineral, KS  
HPRE



**Jim Perry**  
Albuquerque, NM  
Sociology



**Teresa Peters**  
Arkansas City, KS  
Business



**Sonya Piland**  
Macksville, KS  
Biology



**Angie Pope**  
Mt. Pleasant, TX  
Elementary Education



**Lael Porter**  
Lima, OH  
Theatre



**Lori Prado**  
Ponca City, OK  
Nursing



**Caren Prochaska**  
Oxford, KS  
Social Work



**Efrain Quezada**  
Bell Gardens, CA  
Mass Communications



**Meredith Reynolds**  
Winfield, KS  
Nursing



**Jimmy Ricketts**  
Wellington, KS  
Chemistry



**Gabriel Rico**  
Los Angeles, CA  
History



**Miguel Rios**  
Liberal, KS  
Art Education



**Gene Roberts**  
Winfield, KS  
Nursing



**Lars Rognlid**  
Harstad, NORWAY  
Business



**Mike Roosevelt**  
Augusta, KS  
Mass Communications



**Charles Rowley**  
Liberal, KS  
Religious Studies



**Robin Ruggles**  
Winfield, KS  
Elementary Education



**Shawn Rushton**  
Fort Worth, TX  
General Studies



**Bobby Russell**  
Canadian, TX  
Chemistry



**Judy Schlegel**  
El Dorado, KS  
History



**Steve Schneider**  
Goodland, KS  
English Education



**Tonja Seusy**  
El Dorado, KS  
Nursing



**Julie Sheets**  
Blackwell, OK  
Biology



**Candace Sheetz**  
Rock, KS  
Social Work



**Judy Showalter**  
Winfield, KS  
Nursing



**Rodney Slack**  
Hopkinsville, KY  
HPER



**Danny Smith**  
Hutchinson, KS  
Biology



**Kyndal Smith**  
Hutchinson, KS  
Elementary Education





Larone Smith  
Denver, CO  
HPER



Sally Smith  
Oxford, KS  
Sociology/Anthropology



Cynthia Soule  
Arkansas City, KS  
Elementary Education



Sam Spainhour  
Winfield, KS  
Business



Suzi Spainhour  
Winfield, KS  
English



Wendy Steiner  
Winfield, KS  
Mass Communications



Jill Stephens  
Winfield, KS  
English



Donna Stierwalt  
Augusta, KS  
Elementary Education



Gretchen Stone  
Winfield, KS  
Business



Marcia Stucky  
Wichita, KS  
Elementary Education



Nolin Tanaka  
Pearl City, HI  
Art



Jerrold Thomas  
Dallas, TX  
HPER



Jonathan Thompson  
Sedgwick, KS  
Biology



Mitch Todd  
Salina, KS  
Music Composition



Linda Trent  
Arkansas City, KS  
Nursing



Ben Trujillo  
Los Angeles, CA  
HPER



Victor Urieta  
Tyler, TX  
Business



Denise Wagner  
Okemos, MI  
Music and Theatre



Kelly Wallace  
Iola, KS  
Business



Dale Wasson  
Winfield, KS  
Nursing



Jody Watkins  
Kingman, KS  
Art



Marilyn Webb  
Toronto, KS  
Art



Billy Weber  
Winfield, KS  
HPER



Eddie Weigle  
Burden, KS  
Biology



Hazel Wessels  
Belle Plaine, KS  
Elementary Education



Karen Whaley  
Wellington, KS  
Elementary Education



Thom Widows  
Garden City, KS  
Business



Christina Wilken  
Haysville, KS  
Nursing



Debra Williams  
Arkansas City, KS  
Philosophy



Mark Williams  
Winfield, KS  
HPER



Pat Williams  
Winfield, KS  
Elementary Education



Ivory Wilson  
Patterson, LA  
Psychology



Ron Wilson  
Arkansas City, KS  
Psychology



Aaron Wise  
Dexter, KS  
Elementary Education



Leroy Worley  
Bristol, VA  
Elementary Education



Juli Wray  
Liberal, KS  
Elementary Education



John Zink  
Parsons, KS  
Theatre



# Students Not Pictured

- Balzer, Neva; *Newkirk, OK*  
 Banta, Donna; *Winfield, KS*  
 Barber, Lesa; *Winfield, KS*  
 Barr, Robert; *Arkansas City, KS*  
 Beene, Rex; *Winfield, KS*  
 Bell, Pam; *Winfield, KS*  
 Berendson, Eduardo; *Ponca City, OK*  
 Bevis, Teresa; *Belle Plaine, KS*  
 Blevins, Cynthia; *Arkansas City, KS*  
 Blue, Gayle; *Arlington, KS*  
 Boatright, Sherry; *Topeka, KS*  
 Borniger, Kathleen; *Wichita, KS*  
 Boucher, Jim; *Concordia, KS*  
 Braungardt, Jamie; *Douglass, KS*  
 Brotton, Twila; *Wellington, KS*  
 Bryant, Christie; *Arkansas City, KS*  
 Bucher, Tamara; *Arkansas City, KS*  
 Bugbee, Amy; *Quinter, KS*  
 Buie-Collard, Geoffrey; *Waco, TX*  
 Buie-Miller, Sue; *Black Mountain, NC*  
 Bumgarner, Grant; *Winfield, KS*  
 Burgell, Carol; *Burden, KS*  
 Burton, Lori; *Arkansas City, KS*  
 Butler, Clayton; *Winfield, KS*  
 Camp, DeAnn; *Augusta, KS*  
 Campbell, Lisa; *Wichita, KS*  
 Campbell, Mark; *Winfield, KS*  
 Carroll, Darla; *Wellington, KS*  
 Chaaban, Amy; *Arkansas City, KS*  
 Clayton, Eleanor; *Arkansas City, KS*  
 Collins, Ruth; *Winfield, KS*  
 Cooper, Rachel; *Winfield, KS*  
 Craft, Katherine; *Augusta, KS*  
 Daniels, Allen; *Winfield, KS*  
 Daniels, Kim; *Winfield, KS*  
 Defore, Brenda; *Winfield, KS*  
 DeBoard, Melvina; *Braman, OK*  
 DeMart, Mary; *Arkansas City, KS*  
 Dick, Debra; *Ponca City, OK*  
 Douthit, Steve; *Arkansas City, KS*  
 Dush, Theresa; *Winfield, KS*  
 Dutton, Brian; *Winfield, KS*  
 Ebben, Sherrill; *Wichita, KS*  
 Edington, Dennis; *Wichita, KS*  
 Ericson, Marsha; *Ellsworth, KS*  
 Ervin, Tim; *Topeka, KS*  
 Eskridge, Art; *Winfield, KS*  
 Estep, Coleen; *Arkansas City, KS*  
 Estep, Gil; *Arkansas City, KS*  
 Fife, Wendy; *Winfield, KS*  
 Finney, Lonnie; *Winfield, KS*  
 Fleming, Jayne; *Clearwater, KS*  
 Flower, Bob; *Winfield, KS*  
 Ford, Gary; *Arkansas City, KS*  
 Frazier, W.; *Winfield, KS*  
 Freeman, Diane; *Winfield, KS*  
 Gaston, Regina; *Houston, TX*  
 Gibson, Richard; *Winfield, KS*  
 Glasgow, Cathy; *Arkansas City, KS*  
 Godwin, Sheana; *Udall, KS*  
 Green, Peter; *Maryville, TN*  
 Greever, Bonnie; *Winfield, KS*  
 Horton, Jerry; *Arkansas City, KS*  
 Hughes, Kelly; *South Haven, KS*  
 Humphries, Julie; *Wichita, KS*  
 Inthavongsa, Phet; *Winfield, KS*  
 Jennings, Cathy; *Winfield, KS*  
 Johnson, Reba; *Winfield, KS*  
 Jones, Allan; *Winfield, KS*  
 Jones, Carolyn; *Winfield, KS*  
 Jones, Lori; *Winfield, KS*  
 Jones, Rex; *Arkansas City, KS*  
 Jordan, Katie; *Grenola, KS*  
 Joy, Eileen; *Wellington, KS*  
 Kelly, Patrick; *Douglass, KS*  
 Kincaid, Michelle; *Arkansas City, KS*  
 Koontz, Sara; *Sedan, KS*  
 Kough, Joanne; *Winfield, KS*  
 Kough, Patricia; *Winfield, KS*  
 Law, Mary; *Winfield, KS*  
 Leisinger, Jennifer; *Wellington, KS*  
 Lindsey, Sandra; *Wichita, KS*  
 Loehrs, Vicki; *Arkansas City, KS*  
 Long, Kathy; *Winfield, KS*  
 Lundy, Steve; *Arkansas City, KS*  
 Mackey, Carol; *Winfield, KS*  
 Manderino, Michael; *Udall, KS*  
 Martin, Robert; *Arkansas City, KS*  
 Martin, Steve; *Arkansas City, KS*  
 Mather, Dale; *Arkansas City, KS*  
 Mathew, Stephanie; *Winfield, KS*  
 Mattingly, Norma; *Winfield, KS*  
 May, Debbie; *Wellington, KS*  
 McCauley, Ruth; *Winfield, KS*  
 McDermott, Lucas; *Cedar Vale, KS*  
 McNett, Patsy; *Wellington, KS*  
 Means, David; *Cambridge, KS*  
 Miller, LaVerne; *Wellington, KS*  
 Moldenhauer, Jennifer; *Clearwater, KS*  
 Moran, Kristy; *New Cambria, KS*  
 Morland, Dee; *Burden, KS*  
 Morris, Jamie; *New Iberia, LA*  
 Mortimer, Karen; *Winfield, KS*  
 Myers, Irene; *Wellington, KS*  
 Naegele, Chris; *Winfield, KS*  
 Neal, Linda; *Arkansas City, KS*  
 Neises, Aggie; *Arkansas City, KS*  
 Norton, David; *Arkansas City, KS*  
 Parks, Dave; *Oxford, KS*  
 Payne, Paul; *Miami, FL*  
 Peoples, Greg; *Diana, TX*  
 Percival, Marvin; *Oxford, KS*  
 Phillips, William; *Winfield, KS*  
 Pierson, Patti; *Benton, KS*  
 Piha, Keith; *El Dorado, KS*  
 Postelwait, John; *Arkansas City, KS*  
 Reed, Debra; *Belle Plaine, KS*  
 Reiter, Beverly; *Winfield, KS*  
 Rhodes, Rachel; *Arkansas City, KS*  
 Rippe, Lori; *Arkansas City, KS*  
 Ross, Karen; *Winfield, KS*  
 Ruff, Stan; *El Dorado, KS*  
 Rush, Mike; *Winfield, KS*  
 Russell, Anna; *Mayfield, KS*  
 Ruyle, Connie; *Oxford, KS*  
 Sampson, Lois; *Arkansas City, KS*  
 Sandberg, Gary; *Arkansas City, KS*  
 Satterthwaite, Julie; *Udall, KS*  
 Schalk, Dan; *Wichita, KS*  
 Scharnhorst, Michael; *Barnsdall, OK*  
 Schwabauer, Tony; *Wellington, KS*  
 Scott, Michelle; *Grenola, KS*  
 Seaton, Callie; *Winfield, KS*  
 Seidler, Ileen; *Miami, FL*  
 Shetlar, Harry; *Winfield, KS*  
 Short, Nancy; *Oxford, KS*  
 Shrader, Vicky; *Winfield, KS*  
 Sirmons, Fred; *Wellington, KS*  
 Smith, Bill; *Liberal, KS*  
 Spencer, Jolana; *Winfield, KS*  
 Stanley, Linda; *Arkansas City, KS*  
 Stockton, Jeffrey; *Arkansas City, KS*  
 Stull, Janet; *Arkansas City, KS*  
 Swink, Fran; *Mulvane, KS*  
 Tadtman, Jeffrey; *Winfield, KS*  
 Tatum, Janell; *Burden, KS*  
 Tatum, Kim; *Burden, KS*  
 Taylor, Brooke; *Sedan, KS*  
 Tharpe, Clive; *Winfield, KS*  
 Travis, Cynthia; *Arkansas City, KS*  
 Travis, Nancy; *Arkansas City, KS*  
 Trimmer, Krystal; *Winfield, KS*  
 Tucker, J.D.; *Arkansas City, KS*  
 Vollweider, Chris; *Arkansas City, KS*  
 Waldorf, Christopher; *Arkansas City, KS*  
 Wanasek, Sandra; *Rogers, AR*  
 Warren, Sarah; *Winfield, KS*  
 Wartick, Garry; *Wellington, KS*  
 Watkins, Kim; *Winfield, KS*  
 Watters, Brian; *Arkansas City, KS*  
 Wilcox, Sally; *Winfield, KS*  
 Wilke, Beth; *Winfield, KS*  
 Wilken, Chris; *Haysville, KS*  
 Wilkinson, Carol; *Germantown, MD*  
 Williams, Roger; *Winfield, KS*  
 Willis, Sherry; *Wellington, KS*  
 Wilson, Melinda; *Arkansas City, KS*  
 Worley, Kathy; *Winfield, KS*  
 Ybarra, James; *Wellington, KS*  
 Young, Candice; *Sedgwick, KS*  
 Young, Kay Lynn; *Arkansas City, KS*  
 Young, Susan; *Oxford, KS*

# J U N I O R S



Shane Abbott  
*Liberal, KS*



Denise Allen  
*Hesston, KS*



Marilyn Atkins  
*Arkansas City, KS*



Kelly Atwater  
*Emporia, KS*



Crystal Bachmeier  
*Winfield, KS*



Connie Bailey  
*Winfield, KS*



John Baker  
*Cleveland, OK*



Marcia Bartelson  
*Wellington, KS*



Pat Batdorf  
*Augusta, KS*



Seth Bate  
*Woodland Park, CO*



Heather Betts  
*Clearwater, KS*



Jane Bodman  
*Burden, KS*



David Bohannon  
*Geuda Springs, KS*



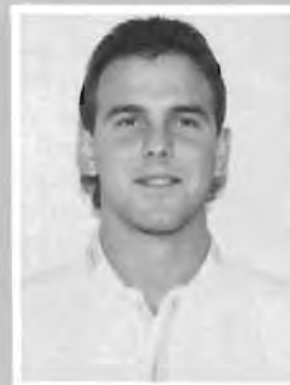
Jennifer Boone  
*Arkansas City, KS*



Carson Brackney  
*Concordia, KS*



Tina Branine  
*Paola, KS*



David Brazil  
*Winfield, KS*



Chad Britton  
*Arkansas City, KS*



Paul Brown  
*Duson, LA*



Robert Brown  
*Arkansas City, KS*



Angela Bruce  
*Arkansas City, KS*



Peggy Bruce  
*Winfield, KS*



Hal Bumgarner  
*Arkansas City, KS*



Cheryl Burr  
*Dexter, KS*



Carolyn Burroughs  
*Arkansas City, KS*



Darren Burroughs  
*Arkansas City, KS*



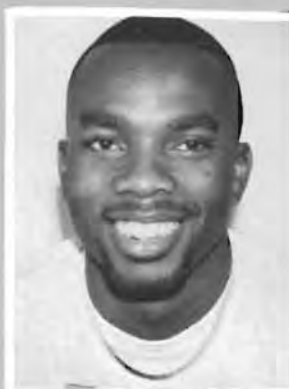
Brady Butcher  
*Elk City, OK*



Brad Cain  
*Salina, KS*



Ramon Camacho  
*Los Angeles, CA*



Les Chapman  
*Wichita, KS*



Michael Clay  
*Douglass, KS*



Amy Conklin  
*Hugoton, KS*



Karen Cornejo  
*Caldwell, KS*



Vicki Cornford  
*Smith Center, KS*



Rick Cox  
*Conway Springs, KS*



Bryan Davis  
*Greensburg, KS*



Janet Davis  
*Winfield, KS*



Michelle Davis  
*Winfield, KS*





Jimmie Day  
Winfield, KS



Tamara DePue  
Topeka, KS



Jeff Dillard  
Augusta, KS



Ron Dillner  
Mulvane, KS



Alane Dinsmore  
Miami, TX



Kristy Dixon  
Moline, KS



Bill Dungan  
St. Francis, KS



Katie Dunham  
Eldorado, KS



Ryan Dunlap  
Great Bend, KS



Jan Eash  
Arkansas City, KS



Kim Eastman  
Winfield, KS



Marsha Ericson  
Ellsworth, KS



Aaron Estabrook  
Arkansas City, KS



Chris Farmer  
Blue Springs, MO



Judy Fleig  
Arkansas City, AR



Britt Ford  
Heavener, OK



Dirk Fowler  
Ft. Leavenworth, KS



Larry Franklin  
Winfield, KS



Don Gifford  
Mannford, OK



Gillian Glover  
Tuckerman, AR



Patty Goedecke  
*ElDorado, KS*



Denys Golay  
*Newkirk, OK*



Maria Gordon  
*Winfield, KS*



Alton Guidry  
*Morgan City, LA*



Jason Gulley  
*Tampa, FL*



Mike Guthrie  
*Elk City, OK*



Kip Haffner  
*Broomfield, CO*



Sharene Hall  
*Wichita, KS*



Cyndee Harris  
*Oxford, KS*



Dixie Harris  
*Arkansas City, KS*



Kimberly Harris  
*Baxter Springs, KS*



Sue Hill  
*Winfield, KS*



Debbie Hillman  
*Cheney, KS*



Chad Hittle  
*Hugoton, KS*



Brian Hoberecht  
*Enid, OK*



Alice Hollman  
*Wellington, KS*



Jean Holzman  
*Wichita, KS*



Sharon Hooker  
*Wellington, KS*



Robert Hyatt  
*Winfield, KS*



Lori James  
*Wichita, KS*





Rodney James  
Sumter, SC



Randi Jennings  
Winfield, KS



Brett Jetty  
Arkansas City, KS



Stephanie Jordan  
Columbus, OH



Antony Kargbo  
Sierra Leone



Tim Kay  
Greensburg, KS



Joyce Kisner  
Arkansas City, KS



Eric Klima  
Lyons, KS



Kiffany Knoll  
Douglass, KS



Cathy Koenke  
Arkansas City, KS



Joanne Kough  
Winfield, KS



Charlie Langford  
Wellington, KS



Larry Langhorst  
Arkansas City, KS



Chad Leonard  
Concordia, KS



Nancy Lewandowski  
Chicago, IL



Ryan Lewis  
Winfield, KS



Earlene Logan  
Arkansas City, KS



Pam Love  
Winfield, KS



Maureen McClary  
Wichita, KS



Brian McGee  
Winfield, KS



Tammy Macias  
Wellington, KS



Becky Majher  
Arkansas City, KS



Brian Markle  
Lyons, KS



Matt Mayberry  
Arkansas City, KS



Matt Medlock  
Waycross, GA



Dana Mettling  
Winfield, KS



Cindy Milby  
Arkansas City, KS



Rodney Miller  
Winfield, KS



Clay Mitchell  
El Dorado, KS



Cindy Moore  
Winfield, KS



Shelly Moorhouse  
Winfield, KS



Gloria Morey  
Balears, SPAIN



Jeffrey Mork  
Wichita, KS



Marilyn Mulvaney  
Winfield, KS



Jolene Munday  
Winfield, KS



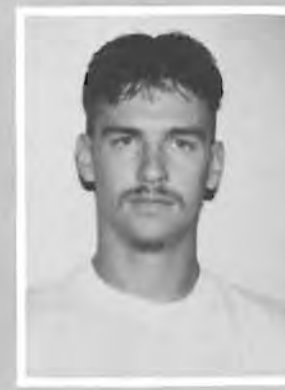
Rebecca Murray  
Augusta, KS



Marcia Musson  
Arkansas City, KS



Phyllis Nemec  
Chicago, IL



Erik Olsson  
Great Bend, KS



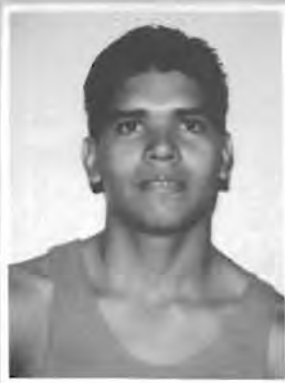
Suzanne Orvis  
Herington, KS



Susan Parks  
*Oxford, KS*



JoAnn Paulus  
*Winfield, KS*



Robert Perez  
*Pampa, TX*



Alan Peterson  
*Liberal, KS*



Clinton Peterson  
*Liberal, KS*



Julie Pettey  
*Bloomington, IL*



Christa Pickens  
*Tonganoxie, KS*



Joseph Piper  
*Dallas, TX*



Anthony Proctor  
*Ferris, TX*



Cynthia Ramirez  
*Winfield, KS*



Denise Rausch  
*Winfield, KS*



Korinna Reeve  
*Liberal, KS*



Sheryl Rice  
*Douglas, KS*



Linda Rickard  
*Rock, KS*



Melody Rierson  
*Grenola, KS*



Kimberly Rinehart  
*Arkansas City, KS*



Judy Rousselle  
*Moline, KS*



Jeannine Saunders  
*Wellington, KS*



Michael Scharnhorst  
*Barnsdall, OK*



Lori Schiff  
*Sawyer, KS*



Dawn See  
Winfield, KS



Sharon Segenhagen  
Derby, KS



Scott Shipman  
Council Grove, KS



Phyllis Shultz  
Winfield, KS



Malissa Simmons  
Derby, KS



Leigh Ann Smith  
Winfield, KS



Barry Sorrell  
New Orleans, LA



Andy Stephens  
Winfield, KS



Stephanie Sturgis  
Liberal, KS



Charles Tatro  
Winfield, KS



Karen Tatro  
Winfield, KS



O'Dell Thomas  
Morgan City, LA



Jim Thorpe  
Arkansas City, KS



Janice Tredway  
Winfield, KS



Yolanda Vance  
Weslaco, TX



Tamara Volbrecht  
Wichita, KS



Dana Voss  
Arkansas City, KS



Jada Walker  
Pawhuska, OK



Stephanie Wall  
Lyons, KS



James Webb  
Winfield, KS





Steve Whaley  
Wellington, KS



Sue Wheeler  
Arkansas City, KS



Sandy White  
Winfield, KS



Tracy Wiechman  
Scott City, KS



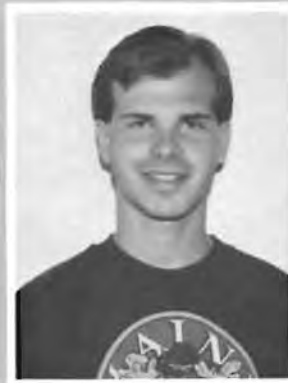
Brian Williamson  
Kismet, KS



Dina Willis  
Udall, KS



Jason Wingate  
Overland Park, KS



Doug Wolff  
Pawnee, OK



Brian Ziegler  
Grainfield, KS



Seth Bate accompanied Marcy Stucky's personal rendition of John Donne's "Elegy 19: On Going to Bed" for Survey of English Literature I projects.



Bart Simpson invited everyone to the Pi Delta Sigma Sweetheart Dance.





Upper left: The Sutton Casino was home to Victor Urieta, Ben Trujillo, Rodney Minor, Dale Anderson, and Mike Scharnhorst.

Center left: Kappa men Jerrold Thomas and Ivory Wilson.

Center right: Being the only dorm on campus not air conditioned resulted in some creativity. Sutton will be air conditioned the summer of 1992.

Lower right: Debbie Hillman receives a 3rd place check from Michael Wilder, Director of Career Planning and Placement, for the Resume Writing Contest. Photo by Kathy Wilgers.



# SOPHOMORES



Melanie Allen  
Arkansas City, KS



Kelly Andes  
Winfield, KS



Mark Androes  
McPherson, KS



Lisa Bahruth  
Arkansas City, KS



Jeff Balthrop  
Peabody, KS



Geoffrey Barnett  
Winfield, KS



Jake Bodine  
Douglass, KS



Christy Boland  
Pratt, KS



Wendy Brenn  
Hugoton, KS



Kimberly Brewster  
Wichita, KS



Courtney Brown  
Bixby, OK



Tim Bumgarner  
Cedar Vale, KS



Michelle Cales  
Winfield, KS



Sara Callender  
Woodland Park, CO



Kris Cummins  
Lindsay, OK



Kurt Cummins  
Lindsay, OK



Chris Davenport  
Heavener OK



Rosann Dennett  
Winfield, KS





Tricia Denson  
Winfield, KS



Regina Diercks  
Agra, KS



Maria Ehmke  
Arkansas City, KS



Chris Feist  
Arkansas City, KS



Audra Flickinger  
Oxford, KS



Angie Fogo  
Leoti, KS



Shannon Folck  
Lyons, KS



Gina Friess  
Conway Springs, KS



Sandra Gasca  
Santa Maria, TX



Amy Graves  
Wichita, KS



Scott Hardtarfer  
Newton, KS



Mike Hargis  
Tulsa, OK



Joy Hathaway  
Johnson, KS



Brandon Haynes  
Coldwater, KS



Curtis Hernandez  
Hutchinson, KS



Sandy Holloway  
Maple City, KS



Amy Houser  
Winfield, KS



Gary Hudson  
Kiefer, OK



Kathleen Hushaw  
Arkansas City, KS



Chris Hutchinson  
Davie, FL



Carla Jackson  
Arkansas City, KS



Heather Jacobs  
Hutchinson, KS



Johnny James  
Haileyville, OK



Lana James  
Augusta, KS



Jamie Johnson  
Oxford, KS



Cheryl Juul  
Grenola, KS



Tina Kelley  
Bennington, KS



Victoria Kelley  
Winfield, KS



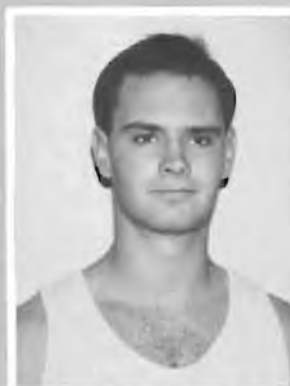
Bryan Kiser  
Winfield, KS



Angela Knoll  
Wichita, KS



Jana Lankford  
Arkansas City, KS



Jay Leach  
McPherson, KS



Shane Lovell  
Douglass, KS



Missy Lupton  
Derby, KS



Stefanie McGee  
Winfield, KS



Brian McKellips  
Anadarko, OK



Barbara Mendoza  
Winfield, KS



Brian Moore  
Wichita, KS



Eric Moore  
Cleveland, OK



Scott Morris  
Brazoria, TX







Charles Osen  
Wausau, WI



Monica Page  
Wellington, KS



Mary Palmer  
Winfield, KS



Mylea Parks  
Argonia, KS



Keela Patterson  
Wellington, KS



Randal Potter  
Syracuse, KS



Ronda Prilliman  
Conway Springs, KS



Terry Quiett  
Woodland Park, CO



Sheri Rains  
Wellington, KS



Joe Reed  
Edmond, OK



Kyle Rhynerson  
Osawatomie, KS



Kelley Rogers  
Edmond, OK



Mike Rose  
Lenexa, KS



Buffy Russell  
Udall, KS



Kelli Schanbacher  
Udall, KS



Mary Schmidt  
Assaria, KS



Jon Schneider  
Goodland, KS



Deanna Shaffer  
Andover, KS



Mike Snyder  
Emporia, KS



Krystyna Sowder  
Winfield, KS



Robin Springer  
Wellington, KS



Derek Stout  
Rolla, KS



Brian Swafford  
Pratt, KS



Leslie Tackett  
Mulvane, KS



Craig Thompson  
Liberal, KS



Irene Tillman  
Hutchinson, KS



Billy Tipps  
Noble, OK



Michael Toler  
Salina, KS



Chuck Torre  
Jacksonville, FL



Julie Underwood  
Andover, KS



Sherri VanNess  
Winfield, KS



Jaime Vasquez  
Emporia, KS



Sandy Walker  
Hugoton, KS



Carla Waller  
Grenola, KS



Dallas Wedel  
Greensburg, KS



Curtis Wheatley  
Columbus, KS



Jerrod Wheeler  
Greensburg, KS



Stacy Wilson  
Wichita, KS



Debra Wright  
Winfield, KS



Michelle Yingling  
Hugoton, KS



Sandee Yost  
Wellington, KS



Dianna Zampieri  
Winfield, KS



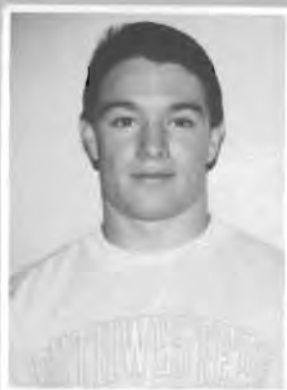
Above: Wow, check out those legs! Chris Davenport during Spirit Week.

Top right: Stephanie Jordan and sisters Jana and Regina Gaston flash their beautiful smiles for the camera.



Bottom right: Jessica Callison enjoys a break from a long, exhilarating "Elijah" rehearsal.

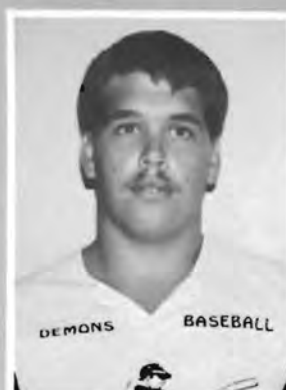
# F R E S H M E N



Shain Abbott  
Ft. Worth, TX



James Allton  
Wellington, KS



Dale Anderson  
Perkins, OK



Monroe Anderson  
Houston, TX



Mary Archambeau  
Winfield, KS



Billy Barker  
Rockport, TX



Cristy Baugher  
Augusta, KS



Shawn Benjamin  
Houston, TX



Kerrie Bennett  
Augusta, KS



Jason Bertolacci  
San Antonio, TX



Brian Brazil  
Larned, KS



Trevor Bridges  
Liberal, KS



Greg Brock  
Winfield, KS



Bonnie Brown  
Rose Hill, KS



Lisa Buller  
Hutchinson, KS



Glenna Burden  
Hutchinson, KS



Martin Campos  
Sullivan City, TX



Darci Carlson  
Arkansas City, KS







Aaron Carson  
*Arkansas City, KS*



Tom Cepeda  
*Brownsville, TX*



Larry Charles  
*Sedgwick, KS*



Chris Cheatum  
*Colorado Springs, CO*



Patricia Couch  
*Winfield, KS*



Shawn Daniels  
*Winfield, KS*



Michelle Day  
*Winfield, KS*



Andy Denny  
*Metairie, LA*



Steve Deyoe  
*Wellington, KS*



Michael Dickey  
*Augusta, KS*



Daphne Dobbins  
*Lyons, KS*



Chris Douglas  
*Poteau, OK*



Deborah Dove  
*Winfield, KS*



Lauri Drew  
*Winfield, KS*



Dennis Duran  
*Oceanside, CA*



Nancy Eagan  
*Arkansas City, KS*



Patrick Edwards  
*Wiggins, MS*



Russell Eickmeyer  
*Washington, MS*



Jessica Filosa  
*Buenos Aires, ARG*



Chris Forsythe  
*Calhan, CO*



Forrest Goodwin  
Arkansas City, KS



Jennifer Grant  
Udall, KS



Rod Gray  
Wewoka, OK



Chris Griffin  
Bixby, OK



Josh Hankins  
Olathe, KS



Shawn Harden  
Wichita, KS



Natalie Harrison  
Valley Center, KS



Posidon Hart  
Dallas, TX



Lisa Heersche  
Mulvane, KS



David Hickey  
Winfield, KS



Chad Hoff  
Rockport, TX



Gretchen Huenergardt  
Wichita, KS



Kolchi Ishizuka  
Miyazono, JAPAN



Jim James  
Augusta, KS



James Johnson  
Jacksonville, FL



Jermaine Johnson  
Lewisville, TX



Jeroid Johnson  
New Orleans, LA



Larry Jones  
New Orleans, LA



Shawn Jones  
New Orleans, LA



Jonathan Kennedy  
Overton, TX



Heather Kirkwood  
GERMANY



Tomomi Kuroda  
Saitama, JAPAN



Randy LeMoine  
Matairie, LA



Trudy McClure  
Winfield, KS



Terry McElwain  
Burden, KS



Jennifer McMillen  
Salina, KS



Amy McWhirt  
Winfield, KS



David Martin  
Quinter, KS



Jim Mayberry  
Oklahoma City, OK



Myrtie Miller  
Winfield, KS



Rodney Minor  
Purson, GA



Karen Mitchell  
Winfield, KS



Jonathan Mobley  
Sanderson, FL



Jon Morris  
Derby, KS



Jennifer Muret  
Winfield, KS



Johnie Myers  
Anadarko, OK



James Nance  
Carnegie, OK



Cetra Oberhelman  
Ness City, KS



Brandon O'Brian  
Shawnee Mission, KS



Jerry Oliphant  
Douglass, KS



Katherine O'Malley  
Wichita, KS



Melinda O'Mara  
Wichita, KS



Anthony Owen  
Bartlesville, OK



Stacy Palmer  
Edmond, OK



Fernanda Peterson  
Buenos Aires, ARG



Lucinda Pontious  
Winfield, KS



Chad Prilliman  
Conway Springs, KS



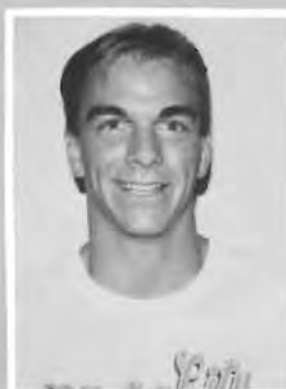
Christina Rahn  
Arkansas City, KS



John Rardin  
Ponca City, OK



Ed Raschen  
Parsons, KS



Ryan Rawlings  
Augusta, KS



Monty Ray  
Wichita, KS



Shane Redmon  
Blanchard, OK



Charlie Rhoads  
Udall, KS



Brandon Rhodes  
Arkansas City, KS



Krystal Riggs  
Winfield, KS



David Robinson  
Elk City, OK



Kedrick Rollins  
Jacksonville, TX



Angela Sage  
Sedgwick, KS



Yuko Sakurai  
JAPAN





Jeff Sandell  
Wellington, KS



Andrea Schneider  
Augusta, KS



Joyce Schroeder  
Winfield, KS



Charles Shook  
Arkansas City, KS



Clinton Shorter  
Dexter, KS



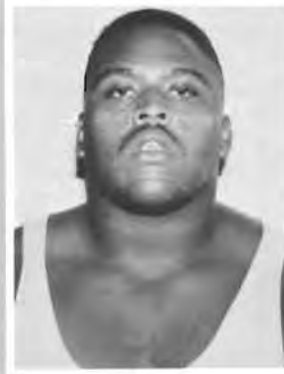
Brian Skibble  
Gueda Springs, KS



Christopher Smith  
Ceder Vale, KS



Mike Sobba  
Arkansas City, KS



Howard Spencer  
Jacksonville, TX



Greg Stoppel  
Sublette, KS



George Stover  
Mayfield, KS



Jason Sweet  
Winfield, KS



Rebecca Swenson  
Concordia, KS



Linden Tally  
Concordia, KS



J.D. Tucker  
Arkansas City, KS



Jim Tucker  
Elk Hart, KS



Curtis VanderSchaaf  
LeMesa, NM



Don Vawter  
Salina, KS



Salvador Villagran  
Fort Worth, TX



Kazumi Watanabe  
JAPAN



Jason Webb  
*Salina, KS*



Ron White  
*Chicago, IL*



Sudie White  
*Winfield, KS*



Jason Wilson  
*Enid, OK*



Debra Woodall  
*Caney, KS*



Matt Woodard  
*Baldwin City, KS*

Right: Brit Ford and SC graduate Chris Frank discuss their future plans with Michael Wilder in career planning and placement.

Bottom left: Greg Stoppel and Tina Kelley enjoy the Pi Delta Sigma Sweetheart Dance.

Bottom right: Amy Conklin shows off her male attire for opposite sex day during Spirit Week.





Top left: Yuko Sakurai posed and let Kathy Wilgers take her picture.

Top Right: Koichi Ishizuka searches for his inspiration as he molds his clay.

Middle left: "The Death of a Tree" in front of Sutton brought on controversy 2nd semester.

Bottom right: Lori Rippe starts a mask on the face of Ivory Wilson.

Bottom left: Mike Snyder and the Jinx have formed a beautiful relationship in his two years at SC.

# FACULTY & STAFF



Brenda Allen  
*Admissions Counselor*



Don Anderson  
*Professor of Psychology*



Raymond Anderson  
*Maintenance*



Ken Andert  
*Instruct. in Social Work*



Ruth Archambeau  
*Dir. of Alumni Dev.*



Connie Barger  
*Clerk, Library*



Harvey Barger  
*Groundsman*



Richard Barnes  
*Assoc. Prof. of Man./Econ.*



Terry Barnett  
*Professor of Chemistry*



Dorothy Bernard  
*Secretary, Education*



Rich Bicker  
*Asst. Prof. of Education*



Deb Biddle  
*Secretary, College Serv.*



Mary Blake  
*Exe. Asst. to President*



Troy Boucher  
*Professor of English*



Tom Bowlby  
*Custodian, Student Center*



Charlotte Brewer  
*Secretary, College Serv.*



Lannie Buechner  
*Asst. Prof. of Nursing*



Katie Bumpus  
*Resident Director*





Susan Burnsted  
*Asst. Prof. of Nursing*



Joann Butler  
*Communications Clerk*



Martha Butler  
*Asst. Prof. of Nursing*



Joan Caldwell  
*Adj. in Language*



Rosetta Callison  
*Secretary, Athletics*



Linda Calvin  
*Secretary, Maintenance*



Donna Carpenter  
*Custodian, Christy*



Phil Carr  
*Asst. Prof. of HPER*



Judith Charlton  
*Professor of English*



Keith Chuvala  
*Maintenance Programmer*



Mike Conover  
*Dir. of Public Relations*



Charlie Cowdrey  
*Football Coach*



Beverly Cox  
*Custodian, Boradhurst*



Norma Cox  
*Accounts Payable*



Connie Craft  
*Dir. of Academic Records*



Will Crow  
*Clerk, Library*



Daniel Daniel  
*Professor of English*



Bill DeArmond  
*Assoc. Prof. of Speech*



InSoon DeArmond  
*Food Service Chef*



Jeanne Dexter  
*Asst. Prof. of Business*



Mikel Dexter  
*Ast. Prof. of Accounting*



Kirk Dubberstein  
*Custodian, Darbeth*



Lee Dubowsky  
*Professor of Math*



Bill Dyar  
*V-Pres. for Development*



Richard Endriss  
*Custodian, Sutton*



Liza Field  
*Instructor in English*



Cecil Findley  
*Professor of Religion*



Dave Galliard  
*VP for Business Affairs*



George Gangwere  
*Asst. Prof. of Math/Physics*



Kathy Gerdes  
*Admissions Counselor*



Benn Gibson  
*Dir. of College Services*



Geoff Grabow  
*Admissions Counselor*



Wallace Gray  
*Professor of Philosophy*



Jeanie Grifford  
*Secretary, Business*



Cindy Groene  
*Nurse/Dir. of Housing*



Christi Grow  
*Secretary, Library*



Kristina Harding  
*Secretary, Admissions*



Antoinette Harrison  
*Provost/Dean of Faculty*



Jim Helmer  
*Asst. Professor of HPER*



Bill Helphingstine  
*Delivery/Groundsman*



Samantha Hendricks  
*Alumni/Development*



Carolyn Herman  
*Asst. Professor of Chemistry*



Sarah Hern  
*Resident Director*



Marguerite Hessini  
*Professor of French*



Nan Hinson  
*Secretary, Development*



Doris Horning  
*Secretary, Nursing*



Charles Hunter  
*Professor of Biology*



Diana Jennings  
*Secretary, Student Life*



Reba Johnson  
*Student Center Mail Clerk*



Barbara Kaiser  
*Secreatry, VP Bus. Affairs*



Gary King  
*Dir. of Information Services*



Mike Kirkland  
*Sports Information*



Joyce Kiser  
*Secretary, Financial Aid*



Mary Therese Landreth  
*Assoc. Prof. of Education*



Cathy Lewandowski  
*Asst. Prof. of Social Work*



Kent Long  
*Carpenter*



Susan Lowe  
*Secretary, Development*



Jan McDaniel  
*Systems Analyst*



Daryl McWhirt  
*Plant Foreman*



Al Madrid  
*Asst. Debate Coach*





Beth Marker  
*Secretary, Placement*



Carl Martin  
*President*



David Mathie  
*Asst. Professor of Music*



Jack Mazzanti  
*Custodian, White PE*



Allyson Moon  
*Instructor in Theatre/Speech*



Roger Moon  
*Asst. Professor of Theatre*



Alan Moore  
*Computer Lab Specialist*



Jennifer Morgan  
*Instructor in Speech*



Jean Nettrouer  
*Asst. Mgr. Book Cave*



Kay Newton  
*Manager, Book Cave*



Dave Nichols  
*Development*



Marcus Payne  
*Resident Director*



Rick Peters  
*Assoc. Professor of Art*



Laura Peterson  
*Resident Director*



Gerald Raines  
*Swimming Pool Manager*



Jane Reeves  
*Donor Information Clerk*



Joan Renek  
*Secretary, Adult Learning*



Margaret Robinson  
*Director of Financial Aid*



Richard Rocha  
*Asst. Football Coach*



Jane Rogers  
*Professor of Education*





Sara Rogers  
*Admissions Counselor*



Larry Romero  
*Director of Food Service*



Cheryl Rude  
*Assistant Dean of Students*



Martin Rude  
*Director of Student Life*



Phil Schmidt  
*Professor of History*



Julie Schuler  
*Director of Admissions*



Mary Anna Sentel  
*Secy, Academic Records*



Sharon Shetlar  
*Assoc. Professor of Nursing*



Pat Sloop  
*Asst. Prof. of Social Work*



Earl Spidel  
*Dir. of College Advancement*



Bill Stephens  
*Director of Athletics*



James Strand  
*Professor of Music*



Judi Sutton  
*Accountant*



Junior Tarin  
*Custodian, Mossman*



Lou Tharp  
*Secretary, Fine Arts*



Max Thompson  
*Professor in Biology*



Wilma Topper  
*Custodian, Wallingford*



Mary Warner  
*Asst. Prof. of Sociology*



Lyle Weinert  
*Asst. Professor of Business*



Matt Welch  
*Asst. Football Coach*



Jim Wheatcroft  
*Asst. Professor of HPER*



Michael Wilder  
*Professor of Music*



Kathy Wilgers  
*Instructor in Learning Skills*



Larry Wilgers  
*Professor of History*



Steve Wilke  
*Dean of Students*



Pat Williams  
*Clerk, Book Cave*



John Willoughby  
*Director of Continuing Ed.*



Bob Wimmer  
*Professor of Biology*



Betty Zaring  
*Asst. Professor of Nursing*



Greg Zuck  
*Library Director*

# ADJUNCT



Roxie Callison  
*Music*



Cindy Goertz  
*Education*



Rick Gregory  
*Education*



Joy Hammer  
*Nursing*



Ron Hudson  
*Psychology / Business*



Scott Schoen  
*Recreation / Sports*



Tim Shook  
*Music*



Thelma Tucker  
*Statistics*



Kris Wetterhus  
*Math*



Joyce Ann Wilder  
*Music*



Ken Woodring  
*Education*

Below left: Beth Marker keeps things humming in the Career Planning and Placement office in the Sutton Center.



Above: The library crew knew what day it was. Greg Zuck, Christie Grow, and Will Crow dressed for the occasion.



Left: Are we in the big time, or what? Showing up for punch were Matt Welch, Vernon Goertz, and Joe Heptig.

OTHER  
STUDENTS



Dale Adams  
*Oxford, KS*



Larry Ankrom  
*Atlanta, KS*



Randy Bradley  
*Council Grove, KS*



Peggy Denker  
*Arkansas City, KS*



Connie Dietrick  
*Winfield, KS*



Diana Duncan  
*Winfield, KS*



Pam Elliott  
*Winfield, KS*



Nancy Fite  
*Winfield, KS*



Scott Gill  
*Winfield, KS*



Julie Good  
*Valley Center, KS*



Deborah Gose  
*Winfield, KS*



Lisa Gunn  
*Arkansas City, KS*



Linda Hankins  
*Winfield, KS*



Dixie Hatfield  
*Arkansas City, KS*



Thomas Hoeffgen  
*Winfield, KS*



Raymond Johnson  
*Winfield, KS*



Cheryl Lacey  
*Winfield, KS*



Ellen Lewis  
*Winfield, KS*





Elma Massey  
*Winfield, KS*



Scott McCalla  
*Augusta, KS*



Marilyn McNeish  
*Winfield, KS*



Mary Moore  
*Winfield, KS*



Rita Musson  
*Arkansas City, KS*



Amjad Nasralla  
*Jordan*



Diane Nickelson  
*Clearwater, KS*



Jennie O'Dell  
*Wellington, KS*



Brian Reid  
*Arkansas City, KS*



Donna Reynolds  
*Winfield, KS*



Nancy Schwantes  
*Winfield, KS*



Judith Shields  
*Winfield, KS*



Melanie Steinle  
*Arkansas City, KS*



Judy Stigge  
*Winfield, KS*



Kathleen Virden  
*Arkansas City, KS*



Patricia White  
*Arkansas City, KS*



Caroline Wilson  
*Winfield, KS*



Lena Wing  
*Winfield, KS*



Pamela Wolfe  
*Burden, KS*

“  
"If men and women are to  
understand each other, to  
enter into each other's  
nature with mutual  
sympathy, and to become  
capable of genuine  
comradeship, the foundation  
must begin in youth."

Havelock Ellis





## ORGANIZATIONS

Student Government Association strived to make the voice of the student body heard. Particular concerns of the '91-'92 senate were the elimination of Jan-term, lack of lighting on campus, and judicial procedures. Because of student body concern, SGA tried to alter administrative actions in each of these areas, but found little cooperation. The senate made history when it approved sending a condom, compliments of Planned Parenthood, to each student with a letter discussing sexually transmitted diseases. Kyle Rhynerson suggested the updating of international flags, and initiated the addition of flagpoles around Kirk Drive. Homecoming '91 was also a highlight.

Front row from left: Amy Conklin, Jeff Balthrop, Craig Thompson, Mike Sobba, Doug Wolff, Stephanie Wall. Middle: Justin Feldman, Michelle Yingling, Ginger Cauble, Andy Stephens, Bryan Dennett, Jennifer Barnes, Marcy Stucky, sponsor Charles Hunter. Back: Sponsor Terry Barnett, Kyle Rhynerson, Jeff Mork, Rodney James, Thad Leffingwell, Chris Farmer, Johnny James, George Stover, Chris Davenport, Carmen Hopkins, Chad Hoff, Heather Kirkwood.

**We tried to get things done,  
but didn't. In a way, that's the  
Southwestern Difference.**

Ginger Cauble & Bryan Dennett



Executive officers: Michelle Yingling, Secretary; Bryan Dennett, President; Ginger Cauble, Vice-president; Carmen Hopkins, Attorney General; Doug Wolff, Treasurer.





Jo-Co was the first real in-depth exposure to college debate for some of us, and it went great  
Linden Talley.

Assistant Coach Al Madrid termed the semester, "the most successful on Southwestern record. SC has usually managed a top 50 national ranking, but has never managed to hold on to the top 10 standing like this."

Southwestern began the semester at Johnson County College. The team of Carson Brackney and Chad Leonard (both Concordia juniors) finished in fourth place in the senior division. In the junior division, Jason Bertalocci (Wichita freshman) and Linden Talley (Concordia freshman, placed fourth. Fifth place went to Sudie White (Winfield freshman) and Glenna Burden (Hutchinson freshman).

At the Gateway Classic at the University of Missouri in St. Louis, Brackney and Leonard place third in the senior division, with Brackney placing eighth speakers honors. Bertalocci teamed with Trevor Bridges (Liberal freshman) to take fourth in the junior division, while

Burden and White took fifth.

After a number of good tourneys, Brackney and Burden combined to take first in the open division at Colorado College. At Wichita State University, Brackney and Leonard took second in the open division. Burden and White tied Bertalocci and Bridges for fifth place.

Other squad member included Charles Rowley (Liberal senior), Tom Cepeda (Brownsville, TX freshman), and Kris Martin (Ponca City, OK senior). The coaches for the team are Jennifer Morgan and Al Madrid.

The Debate Team, from left front: Glenna Burden, Sudie White, Assistant Coach Al Madrid. Back: Thomas Cepeda, Jean Holzman, Chad Leonard, Linden Talley, Carson Brackney, Coach Jennifer Morgan, Trevor Bridges, Jason Bertalocci. Not pictured: Charles Rowley and Kris Martin.



# S A A

Top: Student Activities Association executive officers and committee chairpersons form a pyramid of smiles.

Below, 1st row: Tracy Wiechman, Martin Rude, Amy Conklin, Chris Davenport. 2nd row: Barb Henthorn, Suzanne Fiske, Wendy Brenn, Carla Waller. 3rd row: Jerrod Wheeler, Matt Buchanan, Mike Snyder, Lisa Bahruth, Denise Allen, Kristina Dixon, Brandon O'Brien. 4th row: Jim Tucker, Terry Barnett, Greg Stoppel, Dennis Duren, Lars Rognlid, Brandon Haynes, and Jay Leach.





Above: Jan McDaniel , Programmer, demonstrates the difference between the old computer system and the new AS400.

Below: Roger Moon watches a video at the Cultural Diversity Fair in May.



Left: Southwestern faculty participate in the Faculty Forum once a month.



Top: Editors Julie Underwood, Bobbie Finch, and Stephanie Wall pose for a Christmas picture at the Wilgers' house.



Above: Kazumi Watanabe and Charlie Rhoads work diligently on completing the yearbook.

Right: George Stover whistles as he works on the Moundbuilder index.





1st row: Glenna Burden, Sally Smith, Candace Sheetz, Michelle Lance, Cathy Bruton, Kris Martin, and Dick Barnes. 2nd row: Bob Bourdette, Aaron Estabrook, Matt Mayberry, Rachelle Johnson, Kyndal Smith, and Julie Sheets. Photo by Kathy Wilgers.

Young Democrats is a new organization to Southwestern campus. Beginning with a handful of members, Southwestern's Young Democrats have gained support. The organization has participated in several activities and expects to be active in even more functions as the November elections move closer. In February, several of the Southwestern Young Democrats attended the Washington Day Convention in Topeka. The students got to meet Governor Joan Finney and numerous legislators from around the state. Young Democrats have also been working at informing the Southwestern community of the issues of the 1992 elections, of political viewpoints of the candidates, and about the campaign and election process. Registration booths were also brought to campus for primaries, and will be on campus again next fall. On May 2nd the Young Democrats will be heading to El Dorado to vote

for a representative for Kansas at the national Democratic Convention in New York City.

Bob Bourdette and Dick Barnes have been the sponsors for the Young Democrats this year. Their support and guidance have been greatly appreciated. Mr. Bourdette has been recognized not only as the President of the Cowley County Democratic Committee, but has also received an honor from the Democrats of the state as Outstanding Young Democratic sponsor and leader.

This year's officers were Kyndal Smith-President, Kris Martin-Vice-President, Cathy Bruton-Vice-President, Rachelle Johnson-Secretary, and Aaron Estabrook as Board member. At the April 13th meeting the 1992-1993 officers were chosen, they are Kyndal Smith-President, Kris Martin and Glenna Burden-Vice Presidents, Matt Mayberry-Secretary/Treasurer, and Aaron Estabrook as Board Member.



Karen Clum was the *Collegian* editor for three semesters. At left is how Ms. Clum looked before three semesters of *Collegian*. At the right is her appearance after three semesters of *Collegian*.



Right: Editor Amy McWhirt spent a lot of time in the *Collegian* office with Advisor Kathy Wilgers. This photo was shot after the last *Collegian* of the year was sent to the printer. My, what happy faces. Photo by Mike Conover.



Julie Pettey was often called upon to proof read copy for the staff.



Above: Seth Bate became so interested in the production of the *Collegian*, he will be an editor for the 1992-93 paper.



Right: Kyle Rhynerson, Text Technician for the *Collegian*, kept things humming at the weekly meetings.



1st row: Debra Woodall, Christa Pickens, Seth Bate. 2nd row: Bobbie Finch, Kathy Wilgers, Chris Smith, Amy McWhirt, and Jenny Muret. Photo by Mike Conover.



Jane Bodman, proof-reader extraordinaire, hid behind her Coke. Editor Gabriel Rico concentrated on food at the *Collegian* Christmas bash.

The 1991-92 *Collegian* staff successfully completed all 17 deadlines, producing compliment gathering issues of the paper. "Meanwhile back at the farm..." was a pseudo-soap operatic/romance novella written by various staff members, bringing joy and laughter to the staff. Desiree and Sloan will live in our memories forever! Editors for 1991-92 were Karen Clum, Bobbie Finch, Gabriel Rico, Amy McWhirt, and Debra Woodall. Other staff members included: Christa Pickens, Marilyn Webb, Chris Smith, Jenny Muret, Seth Bate, Deanna Shaffer, Jody Watkins, Mike Snyder, Mitch Todd, Wendy Steiner, Leigh Ann Smith, Heather Kirkwood, Sandra Gasca, Kyle Rhynerson, and Stan Jackson. Kathy Wilgers was the *Collegian* Advisor. Columns were written by faculty members Jeanne Dexter and Cecil Findley.

Black Student Union executive officers are: Rodney James, Carla Jackson, LaRanda Jennings and Jana Gaston. Photo by Kathy Wilgers.



Lonnie Nichols spoke about the future of "the dream" during the Martin Luther King celebration. Photo by Kathy Wilgers.



Performing at the Gospel Jubilee were the AC Pilgrim Singers from Rest Baptist Church in Wichita. Photo by Stephanie Wall.







Top left: "The Christianairs" of Lawrence, KS performed at the Gospel Jubilee.

Middle left: Regina Gaston and Rodney James relax at the Ethnic Feast sponsored by the Black Student Union.

Top right: Sue Jean Brooks, BSU sponsor, enjoyed the meal prepared by community members for the Ethnic Feast.

Bottom right: Rodney James read Martin Luther King's "I Have a Dream" speech at the convocation commemorating the late Dr. King's birthday.



Left: Gospel Choir members performed at the "I Have a Dream" convocation under the direction of Irene Tillman.



Future Educators of America officers: Mary Therese Landreth, Advisor; Kyndal Smith, Secretary; Julie Pettey, President; Cindy Harmon, Vice-President; and Jane Bodman, Treasurer. Photo by Bobbie Finch.

**"It seems like all we do  
is eat!"**

**Julie Pettey.**

The Future Educators of America has had a productive 2nd year at Southwestern. President Julie Pettey has led the group through a bake sale, a food gathering campaign for a needy family, and an appreciation tea for the area cooperating teachers. Other officers are: Kyndal Smith, secretary; Cindy Harmon, vice-president; and Jane Bodman, treasurer. Mary Therese Landreth is the advisor for the group.



1st row: Cynthia Soule, Sherry Carson, Kim Means, Karen Clum, Cathy Burton, Brandon Haynes, Mary Therese Landreth. 2nd row: Susan Parks, Lori Branine, Jane Bodman, Judy Fleig, Earlene Logan, Cindy Harmon, Phyllis Nemec, Megan Gannon, Stephanie Drennen. 3rd row: Mary Landry, Krystyna Sowder, Rosann Dennett, Kyndal Smith, Julie Pettey, and Amy Conklin. Photo by Bobbie Finch.



Left: Just what Freud say that expression means, Dr. Anderson?  
Photo by Bobbie Finch.



Top right: Moving pews in Lois Hill Chapel has become a Southwestern tradition.

Center left: Wendy Steiner explained to Pi Gamma Mu the origins of the sword she brought back from her stay in Spain.

Center right: Halloween gave Reba Johnson, from the student mail room, a chance to have fun.



Lower left: Dirk Fowler shot a favorite location on campus for photography class.

# CAMPUS PLAYERS



Campus Players of 1992. 1st row: Jessica Callison, Jill Stephens, Stu Graham, Paul Brown III, and Denise Warring. 2nd row: Allyson Moon, Angie Fogo, Heather Jacobs, Mike Roosevelt. 3rd row: Roger Moon, Seth Bate, Lael Porter, Kelley Rogers, Barb Henthorn, and Marci Stucky.



Stu Graham, Kelley Rogers, and Marci Stucky.

## EAGERHEART

A unique tradition of the Southwest College Campus Players is the presentation of the Christmas morality play Eagerheart. Eagerheart has been performed at the college virtually every year since 1933, when a Christmas play was requested by the college president.



Below: Mary Lou Martin, Megan Martin, Jane Reeves, and Ralph Decker prepare "Finals Survival Kits" for students at the end of the first semester.



Above: Jane Bodman and Leroy Worley unwind at a Christmas party for the Cooperative Learning Center tutors.



Right: Barb Henthorn sings backup to Jim Perry's new hair style.

# MUSIC GROUPS



Top: David Mathie directed the Southwestern Band for the Moundbuilding Ceremony.

Center left: Members of The Gospel Choir, Kedrick Rollins, Greg Campbell, and Rodney James.

Center right: Carla Jackson and Michelle Yingling represent the musicians who presented recitals.

Right: The Winfield Regional Symphony performed for the first time in December. The Symphony is directed by David Nichols. Photo by Michael Wilder.





Choir, you're going to be magnificent. Now get aggressive!

Dr. Schuppener



The Southwestern Singers: 1st row: Barb Henthorn, Denise Wagner, Jill Stephens, Kelley Rogers, Jenny Muret, Amy Conklin, Sara Callendar. 2nd row: Lars Rognlid, John Rardin, John Zink, Craig Thompson, Lael Porter, Brandon Haynes, Charles Rowley.

The 1991-92 A Capella Choir: 1st row: Barb Henthorn, Wendy Brenn, Jill Stephens, Kelley Rogers, Michelle Yingling, Melanie Allen, Jenny Muret, Angie Fogo, Lisa Baruth, Stephanie Wall. 2nd row: Julie Underwood, Debbie Hillman, Tomomi Kuroda, Jessica Callison, Denise Wagner, Amy Conklin, Sara Callendar, Amy Graves. 3rd row: Bryan Dennett, Lars Rognlid, Paul Brown, John Rardin, Craig Thompson, Mitch Todd, John Zink, Terry Quiett, Seth Bate, Randy Potter, Trevor Leffingwell, Brandon Haynes, Lael Porter, Charles Rowley.

# A C A P E L L A C H O I R





Pi Gamma Mu 1991-1992: 1st row: Sally Smith, Christa Pickens, Gloria Morey, Ina Turner Gray, Linda Rickard, Fran Broadhurst, Jeanine Carnes. 2nd row: Jane Bodman, Marion Askrens, Debra Williams, Phil Schmidt, Caren Prochaska, and Wallace Gray.



Above: Alan Moore was "roasted" as the 1000th member of Alpha Chapter of Pi Gamma Mu.



Above: Wallace and Ina Turner Gray are the force behind the local chapter of Pi Gamma Mu.

Right: Keith Chuvala and Marion Askrens go over the agenda at a regular meeting of the group.







Left: Mary Landry helped Mary Therese Landreth cut cake at the 2nd semester appreciation tea in the Education Department.

Center: Joy Hathaway, Phyllis Nemec, Krys Sowder and Rosann Dennett visited Irving School as part of their education class work.



Left: Jane Rogers received a plaque, presented by Dean Antoinette Harrison, in recognition of her years of service to Southwestern College. Photo by Mike Conover.



Robert "Bob" Redford from the Walnut Valley Bluegrass Festival was the featured speaker for the first banquet in recent years honoring organizations on the Southwestern campus. Director of Student Life Martin Rude planned the event to recognize the contributions of the various groups to campus life.



Chris Martin, representing Pi Kappa Delta (Debate) and the Young Democrats, ignores Glenna Burdette licking the chocolate icing from her fingers. Glenna also represented PKD and the Young Democrats. Kyndall Smith, representing the Young Democrats obviously is ignoring them both.



Chris Davenport stopped to chat with Jerrod Wheeler and Dale Dolezal. The evening found everyone dressed in their Sunday best, ready to brag on the organizations they represented.



Top right: The Collegian and Moundbuilder were well represented by Karen Clum, Bobbie Finch, Christopher Smith, Seth Bate, Christa Pickens, and Jenny Muret.

Center left: The Thetas filled their own table. Cameron Carr, Phil Carr, Heath Perry, Curtis Horton, Jay Leach, and Nick Garcia.

Center right: Jason Webb always makes a statement, and this was no exception.

Lower left: Rachelle Johnson was a representative for the Social Work Club.



# THETA PHI DELTA



First row: Nick Garcia, Travis Jordan, Heath Perry, Paul Brown III, Craig Thompson, Curtis Hernandez, Brandon O'Brien, Dale Dolezal, Jerome Maendele, Jorge Cermenio, Curtis Wheatley. Second row: Anthony Owen, Chris Farmer, Bryan Dennett, Matt Woodard, Jason Diseker, Brian Williamson, Jay Wilson, Gary Hudson, Jason Sweet, Chris Douglas, Jon Mobley, Derek Stout. Third row: Bob Jewett, Curtis Horton, Jay Leach, Ed Raschen, Jonathan Thompson, George Stover, Chuck Torre, Don Gifford, Lars Rognlid, Sam Spainhour, Mike Toler, and sponsor Phil Carr.

Theta Phi Delta members kept busy during the '91-'92 year. Their float for the Homecoming Parade won 1st place for "best appearance." President Nick Garcia and other officers organized many activities including campus clean-up days, cookouts, toga cheer sections, softball games, fundraisers, the annual pledge session and formal initiation.

"Oh-you're gonna do it."





# P I D E L T A S I G M A



First row: Chad Hoff, Russell Eickmeyer, John Baker, Andy Denny. Second row: Jennifer Grant, Becca Swenson, Cetra Oberhelman, Don Vawter, Julie Underwood, Ronda Prilliman, Jamie Johnson. Third row: Tom Cepeda, Greg Stoppel, Kurt Cummins, Kris Cummins, Daphne Dobbins, Shannon Folck. Fourth row: Brian McKellips, Randy Lemoine, Charlie Rhoads, Mike Hargis, Eric Moore, and Chad Prilliman. Not pictured: Matt Eads and Suzanne Fiske.

Pi Delta Sigma completed its twenty-fourth year as a social organization and its nineteenth year as a co-ed social organization. The group had its traditional two week pledge session in the fall, adding fifteen new members. The Delts participated in the homecoming parade, attended sporting events, and also sponsored the Valentine's Day Sweetheart Dance. This year's executive officers were as follows: John Baker, president; Matt Eads, vice-president; Suzanne Fiske, treasurer; Julie Underwood, secretary; Kris Cummins, Shannon Folck, and Brian McKellips, pledge masters.

**"The future's so bright we gotta wear our shades."**



First row: Tina Kelley, Mary Jennings, Debra Wright, Denise Allen, Rachelle Johnson, Sandy Walker, Lisa Bahruth, Julie Sheets, and sponsor-Sara Hern. Second row: Brenda Allen-sponsor, Heather Betts, Julie Schuler-sponsor, Suzanne Johnson, Barb Henthorn, Kelli Schanbacher, Jennifer Barnes, and Melanie Allen.

In 1992, Sigma Iota Sigma focused on community service. Some of these services included each member donating time to serve at the food kitchen for the elderly, there were several campus clean-ups, and the cleaning up of Island Park by this year's pledge class.

The Christmas formal was a tremendous success. Each member spent many hours working on the planning, set up and tearing down of the event. It was held at Baden Square. The hours of hard work paid off as many couples had a wonderful time.

This spring found nine women pledging SIS. After a long two weeks of initiation, all nine pledges successfully became actives, bringing the total active members to twenty two.

Officers for 1991-1992 were: Denise Allen, President; Heather Betts, Vice President; Rachelle Johnson, Secretary; Debra Wright, Treasurer; Lisa Bahruth, Publicist, and Julie Sheets, Historian.

The 1992 pledge class included: Kim Brewster, Katie Dunham, Gillian Glover, Kim Harris, Natalie Harrison, Jen McMillan, Lucinda Pontious, Angie Sage, and Kyndal Smith.

**We're making a lot of changes for the positive and plan to increase our active membership. We want to make our group more than just a name.**

Lisa Bahruth

Below: Trevor Leffingwell, Brandon Haynes, Bryan Dennett, Lisa Bahruth, J. Leonard, Jenny Muret, Michelle Yingling, Bryan Davis, Mitch Todd, and Jill Stephens enjoying a relaxing time at the Pizza Hut after a performance at Osawatomie Methodist church.



Above: Terry Quiett, Sara Callender, and Angie Fogo - just chillin'.

Left: Lisa Bahruth, Jenny Muret, Amy Conklin, and Mitch Todd. Don't they look thrilled to be the first early morning arrivers at the church in Chanute.



# DELTA SIGMA THETA

Delta Sigma Theta Sorority is a public service organization founded by 22 black women on the campus of Howard University 79 years ago. The Zeta Beta chapter was established on the campus of Wichita State University in 1967 and has been a recognized organization on Southwestern campus since 1991.

The service programs of Delta Sigma Theta center around the Sorority's Five-Point program in the areas of educational development, economic development, physical and mental health, political awareness and involvement, and international awareness and involvement.

Zeta Beta has been involved in several activities, including a canned food drive at the Winfield Recreational Center in November. The food was distributed to needy families throughout the area.

In February, the sorority celebrated its Founders Day with other chapters from the Central Region. During the month, the chapter also participated in the BSU Greek Show at Southwestern. The group ended Black History Month by participating in the Big Brother and Big Sister Bowling Classic.

Members traveled to Topeka in March, where they were invited to sit in on the Senate session and ask questions of the Legislator.

The group finished the year by assisting with the Ironkids Triathlon held in Wichita.

Officers are: President, Veronica Williams (WSU); Vice President, Rhonda Thomas (WSU); Secretary, Jana Gaston; and Public Relations, Regina Musgrove.



1st row: Jana Gaston, Irene Tillman. 2nd row: Regina Musgrove, Janell Calhoun, Kelly Wallace, and Lonnie Nichols



# S O C I A L

# W O R K

# C L U B



The Social Work Club 1991-1992: 1st row: Robin Jenkins, Rachelle Johnson. 2nd row: Candace Sheetz, Freida Andrews, Jana Gaston, Jennifer Barnes, Cynthia Ramirez. 3rd row: Bill Dungan, Aaron Estabrook, Ken Andert, Jim Cunningham, Dianna Zampieri, and Anna Marczynski.



Left: The Halloween party for Winfield kids was a definite hit. Photo by Gabriel Rico.

Below: As Acting Director of the Social Work program, Pat Sloop had to read her mail on the run.

Below left: Senior social work students who passed the licensing examination. Candace Sheetz, Barbara Malone, Jennifer Barnes, Rachelle Johnson, and Freida Andrews.



One of the more active groups on campus, the Social Work Club has sponsored parties for children, dinners, clothing drives for the homeless/need, brought speakers to campus for seminars, and a host of other activities.

# CONVOCA-TIONS

Top right: New Improved Matriculation Convocation. President Carl Martin introduced new staff members Cheryl Rude, Assistant Dean of Students; Katie Bumpus, Resident Director; Sarah Hern, Volleyball Coach; and Al Madrid, Assistant Debate Coach. Photo by Bobbie Finch.



Center left: Benjamin Evett presented a theater workshop before his evening performance of "Billy Bishop Goes to War", with the Missouri Repertory Theater. Photo by Bobbie Finch.

Lower left: Benjamin Evett as Billy Bishop at the performance by the Missouri Repertory Theater.

Lower right: You can tell that Phil Carr is glad to be back after summer vacation. Jim Wheatcroft tries to ignore him. Photo by Bobbie Finch.



Maestro Chen, conductor of the Wichita Symphony Orchestra, spoke about his life in China and how he came to the United States. Photo by Mike Conover.



Top right: Roger Nelson prepares for his performance as John Wesley, founder of the Methodist Church.

Center right: Dr. John C. Gaston, from the Department of Minority Studies at Wichita State University, spoke on "The African American Male: An Endangered Species."

Left: Terry Quiett and Angie Fogo patiently wait their turn as Marci Stucky receives a smile and an autograph from Tom Chapin. Photo by Seth Bate.

# CANDIDS



Top: Diane Eskridge can't decide who to take direction from, Larry Wilgers or Phil Schmidt. Diane is the secretary for the Social Science department.



Center left: Director of Public Relations, Mike Conover, and his constant companion for the past five years.



Center right: Senior Anita Jones took a break from finals.

Bottom: Custodians on break. Richard Endriss, Larry Franklin, Tom Bowlby, Wilma Topper and Beverly Cox.











Above: Members of a directing scene - Debbie Dove, Chris Cheatum, Jon Morris, Kazumi Watanabe, Scott Shipman, Angie Fogarty, Joy Hathaway, and Yuko Sakurai.

Below: Southwestern Singers perform for residents of Cumbernauld Village.







Above: Kazumi Watanabe works on a project at the ceramic shed. Photo by Michael Wilder.



Left: Bill Stephens, director of athletics, presents Jim Helmer with a plaque to commemorate his induction into the Athletic Hall of Fame. Photo by Mike Conover.

“  
We are an intelligent species and the use of our intelligence quite properly gives us pleasure. In this respect the brain is like a muscle. When it is in use we feel very good. Understanding is joyous.

Carl Sagan.



“

I think being on yearbook staff offers more rewards, and sometimes more headaches than people realize. Not only do you get the experience of working with page layout on the Macintosh, but you also learn how to meet deadlines at the last minute.

Julie Underwood

”

### The Editors

Right: Stephanie Wall proves that being a yearbook editor isn't always hard work.

Bottom Right: Bobbie Finch - strike a pose!

Below: Julie Underwood is hard at work preparing yearbooks to mail out to the graduates.







Above: Kim Fort, Juli Wray, Julie Sheets, Lori James, Daphne Dobbins, Tracy Wiechman, Julie Pettey, and Shannon Folck know what tennis is all about.



Left: Jon Morris and Don Vawter watch women's tennis. Chris Farmer and George Cermano chose to take a seat on the upper deck.

“  
**Tennis anyone?**  
 Humphrey Bogart  
 ”



“  
Heap on more wood! - the wind is chill;  
But let it whistle as it will,  
We'll keep our Christmas merry still.  
Sir Walter Scott

Right: Bill Dyar, vice-president for development, and Ruth Archambeau, director of alumni, are delivering poinsettias grown in the campus green house to local donors. Photo by Kathy Wilgers.







Left: A poinsettia helps to decorate Christy lobby during the Christmas season.

Below: Faculty and staff present their beautifully decorated Christmas tree for everybody to see.

Bottom: Courtney Brown displays his Christmas spirit by affixing a wreath to the front of his truck.







Above: The windows of Wallingford Hall were brightly decorated with the homecoming theme - A World of Magic.

Right: Cheerleaders Jennifer Grant, Shawn Harden, and Irene Tillman lead the homecoming parade down College Street.

“  
**I thought it was a nice parade.  
 Maybe it could have been bigger,  
 but I enjoyed participating in it.**

Irene Tillman

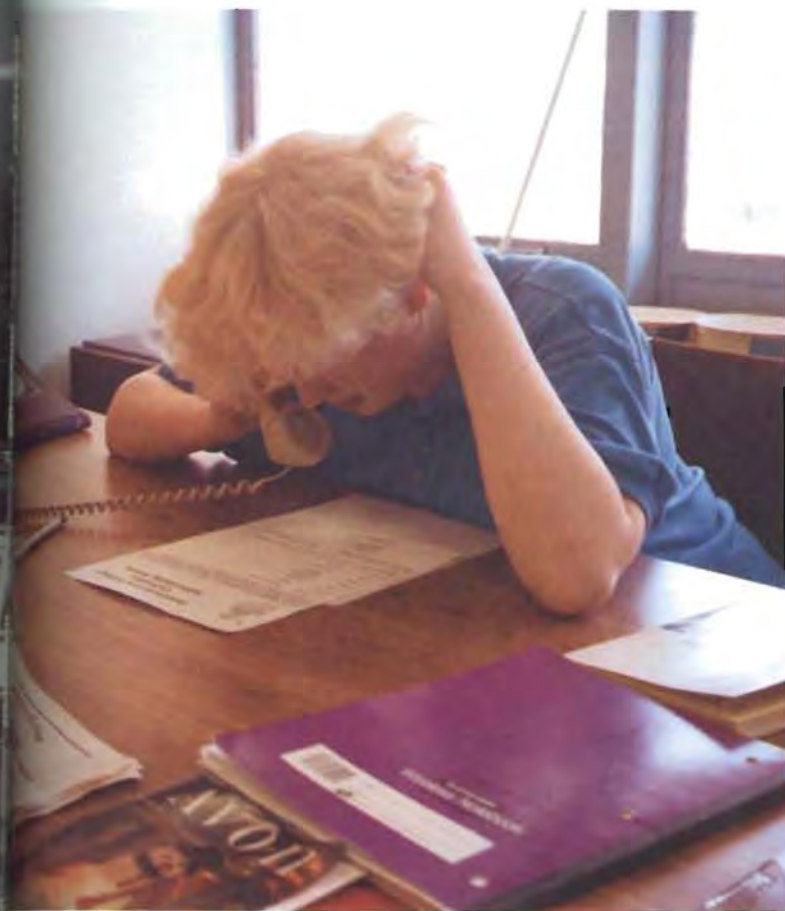




“  
**All nature wears one universal grin.**

Henry Felding

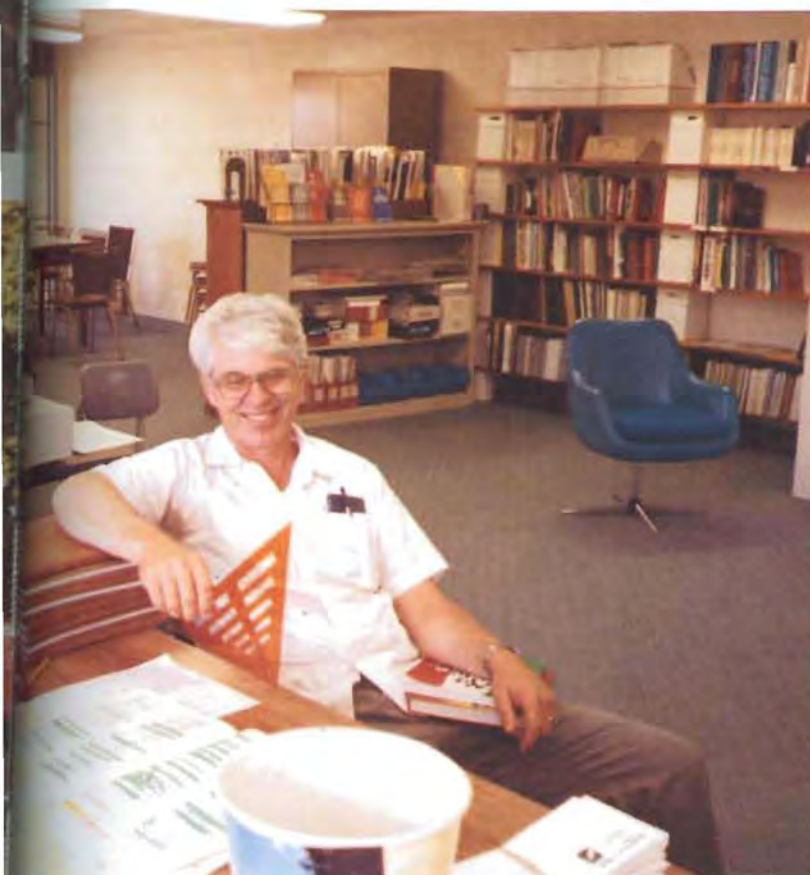
”



Top Left: Heather Kirkwood works for *The Collegian* selling ads.

Bottom Left: Larry Wilgers patiently waits for the yearbook staff to clean up their mess so he and Kathy can leave.

Below: Katie Dunham, Kiffany Knoll, Natalie Harrison, and Heather Betts enjoy building pyramids in Sutton Lobby during their free time.





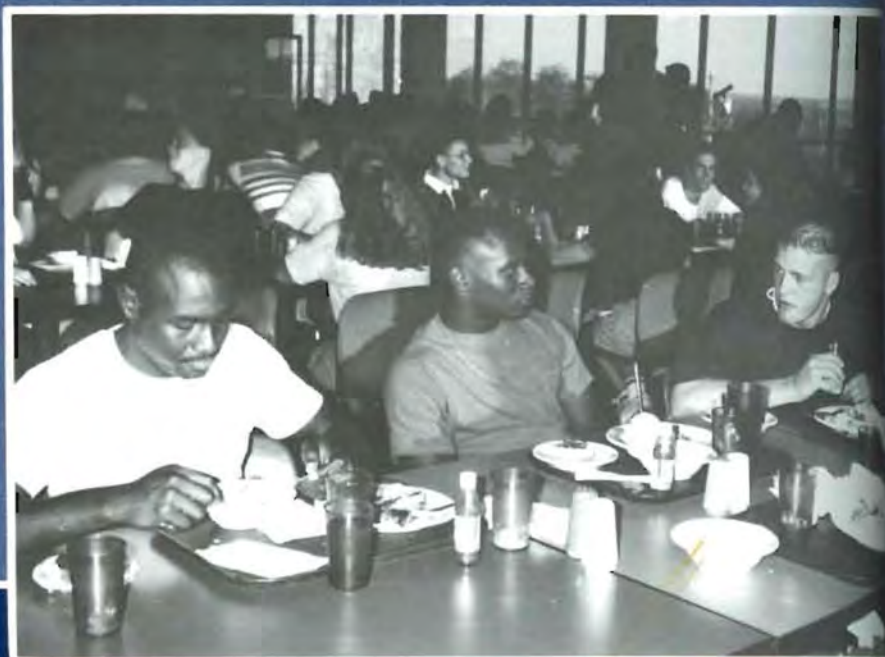


“

I remember my youth and the feeling that will never come back anymore - the feeling that I could last forever, outlast the sea, the earth, and all men.

Joseph Conrad

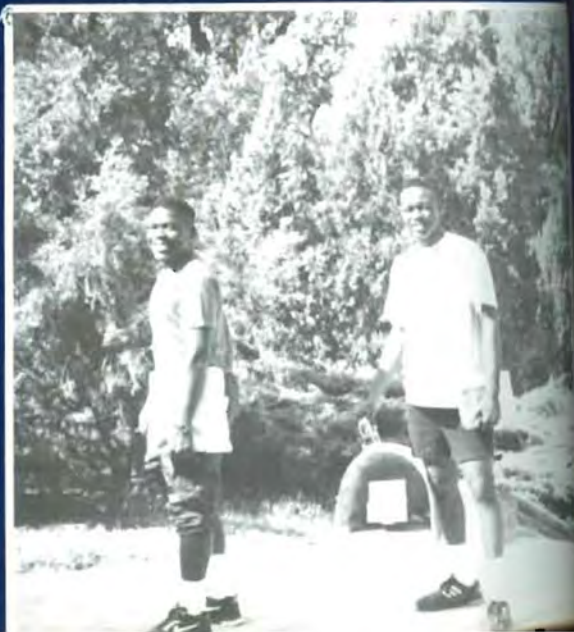
”



Top: One of the freshmen seminar groups enjoys a trek across the parking lot.

Center: Freshmen James Johnson, Jonathan Kennedy, and Shane Redmon get a taste of Southwestern cafeteria food.

Bottom: Shaun Jones and Larry Jones, both freshmen from Louisiana, take time out to pose for a photo.







Top: Freshmen Jason Webb and Jon Morris enter Wallingford hall without their "shiny, happy people" faces.

Center: Dale Anderson receives some tutoring from Amy McWhirt in the Sutton Center.

Bottom: Cheryl and Martin Rude ask freshmen Jennifer McMullen and Andrea Schneider about their experience with campus life.



“  
Ask the young, they know  
everything.  
Joseph Joubert  
”







Above: Jason Webb, Mike Hargis, Don Vawter, Deanna Shaffer, and Keela Patterson enjoy the nice, new atmosphere of the Student Center while Chris Hutchinson plays the loner in the background.

Right: Lisa Buller and Jaime Vasquez show off their marshmallow marks that were acquired at the homecoming bonfire and hay rack ride.

“  
**The bonfire was fun and exciting - it lit up the entire S.C. hill! The roasted marshmallows were good - at least the few that made it into my mouth.**  
 Lisa Buller







Left: Mary Lou Martin stands during the singing of the Alma Mater at Family Day.

Bottom: Cheryl Rude, Kathy Wilgers, and Mike Kirkland perform the Sutton Center Rap during a freshman convocation.

Below: George Stover and his family join in the festivities at the Southwestern Extravaganza.





Top: Pam Perez and her son enjoy family day at the football game.

Bottom: Ben Trujillo and Ramone Camacho. Two California men hangin' out in Sutter Hall.

“

From quiet homes and first  
beginnings,  
Out of the undiscovered ends,  
There's nothing worth the  
wear of winning,  
But laughter and the love of  
friends.

Hilaire Belloc

”



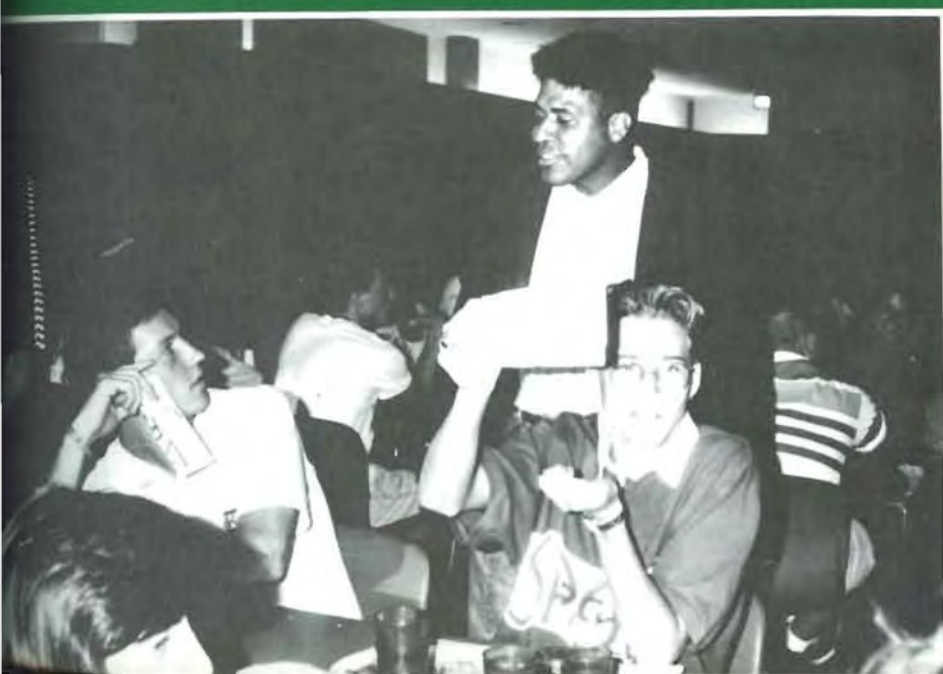




Top: Jorge Cermeno, Larone Smith, and Efrain Quezada seal their friendship with a handshake.

Middle: Cross country pals Jody Watkins, Tammy DePue, Jana Gaston, and Lisa Buller display their trophies.

Bottom: Ed Raschen and Trevor Bridges give new assistant debate coach Al Madrid a tough time.



“  
Do all the good you can,  
By all the means you can  
In all the ways you can  
In all the places you can  
At all the times you can  
To all the people you can  
As long as ever you can.  
John Wesley's Rules





Above: Sunrise at Stewart Field House.

Right: King Drive is surrounded by beautiful flowers during late summer.

“  
**How fast has brother followed  
 brother  
 from sunshine to sunless land.**  
 William Wordsworth







Top: Michael Wilder presents Bob Jewett a \$75 check for taking first place in the resume writing contest. Thad Leffingwell was the second place recipient. Dr. Wilder plans to make this contest an annual event.

Above: Pat Howard, a teacher at Lowell Elementary in Winfield, spoke to the language arts education class about the use of whole language in the classroom.

Left: Jody Watkins spent part of her summer helping paint the library.

# SPORTS





“

In battle or business, what-  
ever the game,  
In law or in love, it is ever  
the same;  
In the struggle for power,  
or the scramble for pelf,  
Let this be your motto--  
Rely on yourself!  
For whether the prize be a  
ribbon or throne,  
The victor is he who can go  
it alone!

The Game of Life st. 7

”



# FOOTBALL



Top right: Robin "Red" Jenkins #42 and Fred Green #5 rush the Kansas Wesleyan team Family Day, September 28. Photo by Wendy Steiner.

Center right: Fullback Fred Green #5 looks for somebody to block for running back "Red" Jenkins #42. Photo by Wendy Steiner.

Bottom: Jeroid Johnson #20 tries to elude one of the defenders. Photo by O'Dell Thomas.

**"Our experience of being a prominent football team in the earlier part of the season has taught myself, as well as the rest of the team, that the only thing that is permanent is change, as our previous status has shown. But since change is permanent, we will adjust and rise again."**  
**Ivory Wilson, Captain.**



**"We played a hard fought and hard hitting game (against Bethany), but came up short."  
Efrain Quezada,  
defensive tackle.**

Top right: Fred Green #5 is brought down by a few defenders after a long gain. Photo by Wendy Steiner.



Center left: Matt Medlock #21 makes a run against two defenders. Courtney "Porkchop" Brown is also pictured. Photo by Wendy Steiner.



Above: Andy Jordan celebrates another great Moundbuilder play. Photo by O'Dell Thomas.



Left: Offensive linemen Curtis "Butcher" Horton #70 and Billy Tipps #75 take a break after an SC touchdown.

**"I think it (the game against Tarleton) made us more aware of the fact that we can be beat.**

**O'Dell Thomas,  
middle linebacker.**



Top right: Jeroid Johnson #20 finds a huge hole to run through. Robert Coleman #2 and Scott Morris #22 are also pictured.

Center: Robert "Showtime" Coleman #2 waits for one of his pass receptions from Jerrold Thomas #3.

Jerrold Thomas #3 throws a pass to Joe Piper #8. Rodney James #77 is also pictured. Photo by Steve Schneider.





# FAMILY DAY



Top photo: Families from all over came to the Sutton Center Tailgate party before the game. Photo by Stephanie Wall.



Center photo: Willie Coleman brought his wife, Connie, and their son to the Family Day football game. Photo by Lonnie Nichols.



Bottom photo: Students and family guests sang the Alma Mater at the Southwestern Extravaganza Saturday morning. Photo by Kathy Wilgers.

# SPIRIT SQUAD

Right: Deanna Shaffer, Shawn Harden, Irene Tillman, Keela Patterson, Stacy Palmer, and Jennifer Grant.



Center: Deanna Shaffer, Stacy Palmer, Shawn Harden, and Irene Tillman.

Below right: Keela Patterson, Irene Tillman, Shawn Harden, Jennifer Grant, Stacy Palmer, and Deanna Shaffer.

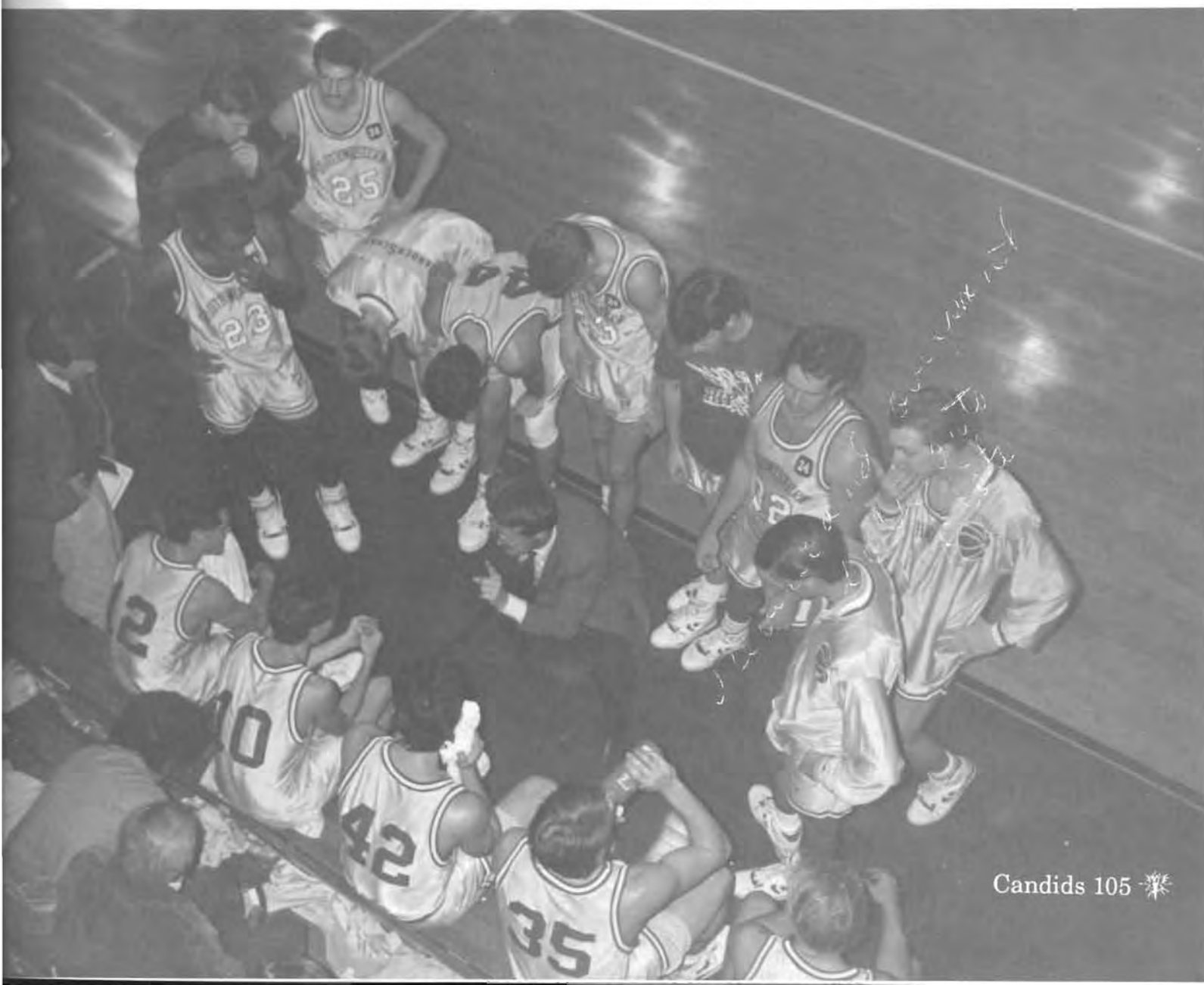




Top left: Debra Wright and Mike Toler are real fans of Builder football.

Top right: Joe "Buck" Reed is obviously fascinated by women's basketball.

Below: Coach Jim Wheatcroft gives his team a pep talk.





# W O M E N ' S T E N N I S



The 1991 Women's Tennis team: Kim Fort, Shannon Folck, Julie Sheets, Juli Wray, Coach Steve Vann, Lori James, Daphne Dobbins, Tracy Weichman, and Julie Pettey. Photo by Stephanie Wall.

The 1991 Women's Tennis season was a hit. The team, under Coach Steve Vann, captured the Women's KCAC Tennis Championship. Shannon Folck took first in Number 5 singles, and received Honorable Mention All-Conference Team. Julie Pettey was honored as a conference Scholastic Athlete. Juli Wray and Kim Fort were named to the All-Conference Team. Success didn't end with the KCAC tournament. As a team, the women took 2nd place in the District 10 Tournament, coming in behind Emporia.



# MEN PLACE 4TH IN KCAC

BART DENNETT-1992 KCAC SPORTSMANSHIP AWARD  
BOBBY RUSSELL-ALL KCAC HONORABLE MENTION



1st row: Ryan Rawlings, Trevor Bridges, and Dirk Fowler. 2nd row: Jerrod Wheeler, Bobby Russell and Bart Dennett

M  
E  
N  
'  
S  
  
T  
E  
N  
N  
I  
S

“  
Tennis anyone?  
Humphrey Bogart  
”



Top left: They're Off! Jana Gaston, Tamara DePue, Jody Watkins, and Lisa Buller.  
Photo by Mike Kirkland.

Top right: Jiggs Maendele "puts on a surge" at the ESU Invitational. Photo by Jody Watkins.

Right: Travis Jordon takes the lead at the OBU Invitational. Photo by Tamara DePue.

Below: The Southwestern men warm up for the Emporia State University Invitational.



“  
**Don't hurt yourself.**  
Justin Feldman

”







1991 Cross Country Team Members. First row: Tamara DePue, Jana Gaston, Jody Watkins, Lisa Buller. Second row: Jason Webb, Doug Frahm, Jim Perry, Curtis Hernandez, David Martin, Travis Jordon, Mark Androes, Jeff Creach, Brian Ziegler, Mike Snyder. Back row: Robert Perez, Jim Tucker, Jiggs Maendele, Joe Reed, Jason Wilson, Brian Skibbe, Jaime Vasquez, Brian McGee, Justin Feldman and Matt Woodard.



Above: Jim Perry is "gettin' after it" at the ESU Invitational.  
Photo by Jody Watkins.

.....  
● **NAIA District 10 at Emporia State**

● Women - Lisa Buller 3rd place  
● Tamara DePue 9th place  
● Men - 2nd place team finish  
● Travis Jordan district champion

● **KCAC Championship meet at Bethany**

● Women - 2nd place team finish  
● Men - 1st place \*\*12th consecutive year\*\*

● **Nationals at Kenosha, WI**

● Women - Lisa Buller 93rd place out of 326 runners  
● Men - 15th place team finish  
● Travis Jordan, Jim Perry finished in top 100  
● .....

# V O L L E Y B A L L



Above: Number 23, Suzanne Orvis, bumps the ball over the blocker's heads. Photo by J. Leonard.



Above: In a volleyball scrimmage against Cowley County Community College, the Lady Builders huddled before a play. Photo by Bobbie Finch.

The Lady Builders Volleyball team started off their season well at the Bethel College Early Bird Classic. At the Friends Quad in October the women defeated Sterling College 7-15, 15-12, and 15-7. This meet marked the team's first conference win of the season. The ladies closed their season by finishing seventh in the KCAC. Senior Chris Wilken was selected as an All-Conference player.

**"The team pulled together to win. We wanted it really bad."  
Tina Branine, after the Lady Builders defeated Cowley County.**



**"Things are finally coming together as a team. Our bench is really contributing a lot to our success in the Conference."  
Janell Calhoun, Assistant Coach**

Left: Suzanne Orvis #23 passes the ball to Ronda Prilliman #3 as she gets ready to spike it over the net.



Women at Work! 1991 Southwestern College Volleyball team: Gina Freiss, Janell Calhoun, Jamie Johnson, Christy Boland, Sandra Gasca, Suzanne Orvis, Coach Sarah Hern, Tina Branine, Ronda Prilliman, Chris Wilken, Korrina Reeve, Kerri Bennett, Angie Sage. Kneeling: Yolanda Vance and Kelli Schanbacher.



# GOLF

The Southwestern College men's golf team ran away with the 1992 KCAC Golf Championships by scoring a conference low of 602 for the two-day meet. This is the fifth consecutive KCAC title for the team. Leading the way for the Builders was conference champion Kurt Cummins of Lindsay, OK, who shot a 74/70 for a total score of 144, which also set a new KCAC record. Rounding out the top five individual medalists were second place finisher Andy Stephens of Winfield (79/75=154) and Kris Cummins, also of Lindsay, OK (77/77=154). Jason Gulley finished in a three-way tie for fifth medalist (76/78=157). These top five finishers were also named to the All-KCAC team. Coach Bill Stephens was named the KCAC Coach-of-the-Year.

Team Scores	
Southwestern	602
Friends	636
Kansas Wesleyan	660
Bethany	667
Ottawa	675
McPherson	716



Bill Barker, Kurt Cummins, Thad Leffingwell, Kip Haffner, Jason Gulley, Chris Cummins, and Andy Stephens.

1st row: Ryan Dunlap, Traci Henley, Monica Page, Natalie Harrison. 2nd row: Suzanne Orvis, Scott Bugby, Dirk Fowler, and Head Trainer-Phil Carr. Photo by Mike Kirkland.



Behind the courts and fields of athletes, maintaining the athletes' participation as much as possible, is a staff of its own endurance. Attending games and meets prepared to quench thirst and ease injury, the training staff cover practices and general day treatment consisting of taping, heat treatment, ultra-sound, whirlpools and interferential treatment. The trainers spend 3-4 hours a day in the training room, learning first hand experience. They are the unsung heroes of Southwestern.

**Heroism, they say, is  
endurance for one mo-  
ment more.**

-George Kennan

# WOMEN'S BASKETBALL

“

**"It's been a really rough season and I'm surprised at how motivated we still are. The fans have been very supportive."**

Ronda Prilliman

”

The Lady Builders had a rebuilding season under first-year head coach Marcus Payne. Although the team won only one game, it was a very exciting game, the Builders beat Kansas Wesleyan 104-98 in overtime.

Other highlights of the season are as follows:

- Yolanda Vance All Tournament team at Bethel Tournament
- Yolanda Vance All KCAC honorable mention team
- Suzanne Orvis highest team average, 11.5 points per game
- Suzanne Orvis and Ronda Prilliman among KCAC's leaders in rebounding
- Yolanda Vance best three point shooter

Below: Coach Marcus Payne gives his women an intense pep talk during half time.

Photo by Julie Underwood







Team photo left to right: Alane Dinsmore, Yolanda Vance, Jamie Johnson, Ronda Prilliman, Julie Sheets, Suzanne Orvis, Sandra Gasca, Lisa Heersche, Korinna Reeve, and Christy Boland. Front row: Coach Marcus Payne and Assistant Coach Traci Henley.

Below: Coach Payne, Assistant Coach Henley, and statistician Sarah Hern enjoy a relaxing moment before the game.



## Southwestern's Cinderella Season

The basketball team proved all of the odds makers wrong after the team was picked in the pre-season polls to finish no better than eighth in the ten team conference by the coaches and the media. SC won the KCAC title with a 15-3 record, 19-9 overall. This was two games better than runner-up Tabor College, 13-5. They last won the title in the '84-'85 season. Coach Jim Wheatcroft was named KCAC "Coach of the Year." Brian Markle was named KCAC "Player of the Year" and was a unanimous selection to the All-KCAC first team. Joining Markle on the first team was teammate Brady Butcher. In addition, Les Chapman was named to the All-KCAC Honorable-Mention team. District honors were again garnered by Wheatcroft and Markle. Coach Wheatcroft was named Co-Coach of the Year in NAIA District 10, and Brian was selected to the All-District 10 team. Southwestern finished the regular season ranked 22nd in the NAIA Division II polls, after being ranked as high as 20th. Individually, Markle was ranked 4th nationally in 3-point field goal percentage with 52.6%. Butcher also received recognition with his 64.2% field goal percentage, which was good for a 7th place ranking nationally. As a team, the Builders dominated most of the statistical categories in the KCAC and District 10. SC led all teams in field goal percentage (51.6%), 3-point field goal percentage (43.6%), and team scoring offense (85.2 points per game). Nationally, their team field goal percentage and 3-point percentage placed them 8th and 6th among all schools. SC hosted the first two rounds of the NAIA District 10 playoffs, defeating Baker University in the first round, but lost a heartbreaker at the buzzer to league nemesis, Tabor College, in the semi-finals, ending SC's Cinderella season.

-story by Mike Kirkland



**They laugh  
that win.**

-Shakespeare



Front row: Joe Jacobs-Assistant Coach, Marcus Payne-Assistant Coach, Head Coach Jim Wheatcroft, Glen Hass-Assistant Coach. 2nd row: Brian Hoberecht, Les Chapman, Chad Hittle, Brian Markle, Justin Branine, Scott Bugbee, Jason Wingate, Jimmy Day, Charles Osen. 3rd row: Mike Guthrie, George Stover, Scott Hardtarfer, Greg Brock, Erik Olsson, Brady Butcher, Eddie Weigle, Brad Cain, and Curtis Vanderschaaf.

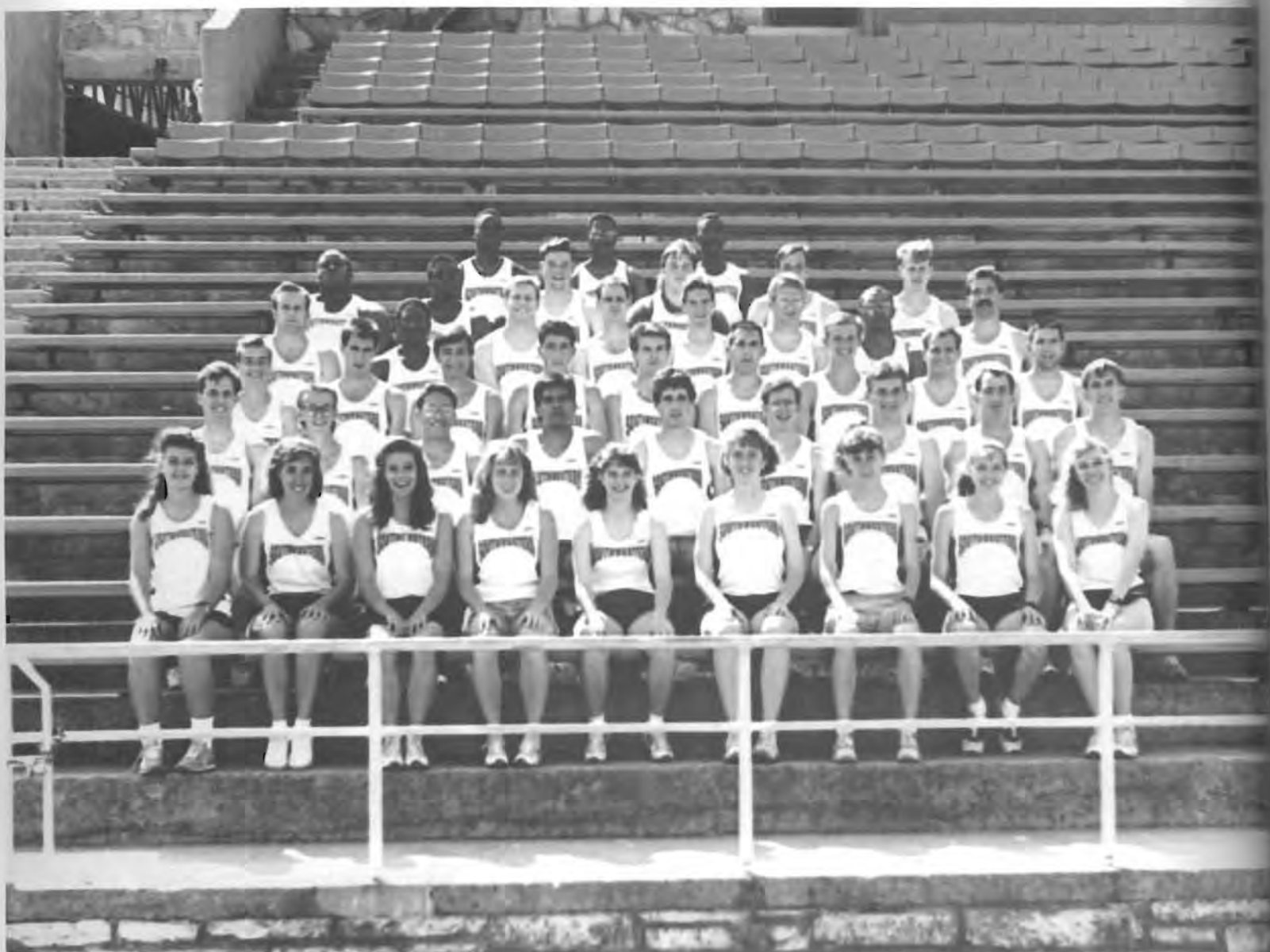




# T R A C K



Left: Jerroid Johnson is amazed at Jerrold Thomas' recovery time. Photo by Jody Watkins.



The 1992 Track Team: 1st row: Shannon Folck, Juli Wray, Daphne Dobbins, Kerrie Bennett, Christy Boland, Jody Watkins, Lisa Buller, Tamra DePue, Denise Allen. 2nd row: Mike Snyder, Brian McGee, Curtis Hernandez, Robert Perez, Dale Dolezal, Ty Partridge, Chris Davenport, Jerry Houser, Marc Needham. 3rd row: Jim Perry, Justin Feldman, Brian Ziegler, Jaime Vasquez, Jiggs Maendele, Doug Frahm, Jason Wilson, Joe Reed, Jeff Creach. 4th row: Brian Williamson, Paul Brown, Chris Douglas, Jay Leach, Matt Woodard, Brandon O'Brien, Willie Coleman, Phil Moorehouse. 5th row: Howard Spencer, Larry Jones, Russ Eickmeyer, Curtis Wheatley, Chris Feist, Dallas Wedel. 6th row: Jerrold Thomas, Joseph Piper, James Johnson.





Chris Feist, sophomore, ponders the best way to psych out his opponent to achieve a victory. Photo by Shari Kennedy.

Southwestern College continued its reign of dominance in track and field, as the men's team won its 10th consecutive KCAC title and the women's team finished runner-up, just shy of a clean sweep by both teams. Improving upon last year's third place finish, the women's team scored 103 points to finish second. All ten of the lady Builders entered in the meet scored in at least one event. Earning All-KCAC honors were Christy Boland, conference champion in the javelin and Kelly Wallace, conference champion in the discus. For the men, this meet turned out much the same as the previous nine conference championships have. SC's men earned 229 points to outdistance runner-up Sterling College, who finished with 83 points. Those earning All-KCAC honors were: Joe Reed in the 800m., Dale Dolezal in the 110m. high hurdles, Gerald Houser in the 400m. dash, Howard Spencer in the shot put, Jim Perry in the 10,000m., and the 4 X 100m relay team (Jeroid Johnson, James Johnson, Joseph Piper, and Jerrold Thomas). This relay team also set a new KCAC record of 41.2 seconds. Southwestern has held the record for the 4 X 100 relay consecutively for 10 years, they have never been beaten by another school. Also, the 4 X 400m relay team was first with a time of 3:17.7 and earned All-Conference honors. This team included Joseph Piper, Marc Needham, Chris Davenport, and Gerald Houser.

"It's all in a day's work."



Top: Jim Perry and Jaime Vasquez look like they're ready for this Bethany race to end.

Bottom: James Johnson, middle man-first row, makes sure his starting equipment is in working order.



Top: Jerrold Thomas crosses the finish line first in the 100m.

Bottom: Brian McGee really turns it on for a big finish.



All photos on this page taken by Shari Kennedy.



It's all in a day's work."



Mark Androes times Lisa Buller as she takes another corner.



Howard Spencer gets ready to launch the shot put at the Southwestern Relays.



Joe Reed stays in the front of the pack at the Bethany track meet.



Left: Reggie Callins and Janell Calhoun spent a long hot summer doing things like painting the gym in White P.E. Photo by Kathy Wilgers.

Below: Is this what it really looked like in the Dining Hall! office area?



Above: Larone Smith got to know every inch of the offices in Sutton Hall. He helped tear down walls, build walls, scrape, and paint.

Right: The new air-conditioning units for Wallingford provide much appreciated cooling for that dorm's residents.





The summer of 1991 saw many cosmetic changes on the Southwestern campus. The Roy L. Smith Student Center was the most noticeable change, going from state-of-the-arts 1960s to lots-of-glass 1990s. Honor Dorm was improved inside and out, with air conditioning, new doors, windows, and bathroom fixtures. Wallingford Hall was air conditioned. Sutton Center was carved out of Sutton Hall to house the Cooperative Learning Center, Career Planning and Placement, Public Relations, and the Assistant Dean of Students. White P.E. was refurbished inside and out, including a new gym floor. In the Computer Information Center, the IBM System 38 was replaced with an IBM Application System/400. A lot of areas on campus received new coats of paint, including the Library and dormitory rooms. All in all, summer 1991 resulted in a noticeable improvement at SC.



The old turquoise louvers (top photo) came down to make way for the enlarged and glassed-in Dining Hall/Snack Bar (bottom photo). Photos by Kathy Wilgers.



# EVENTS





“

I am a Liberal, yet I am a Liberal tempered by experience, reflection, and renouncement, and I am, above all, a believer in culture.

Matthew Arnold, *Culture and Anarchy*

”

# MOUND CEREMONY



Top photo: Bryan Dennett held the microphone for Lena Wing, who attended the first Moundbuilding Ceremony as a student in 1927. Photo by Gabriel Rico.



Center left: SGA President, Bryan Dennett, assisted by SGA sponser, Terry Barnett, announced the various groups who presented rocks at the 1991 Moundbuilding Ceremony. (Notice the newly purchased portable microphone.) Photo by Gabriel Rico.

Center right: Julie Schuler, admissions director, steps carefully to avoid hurting the "goose neck." Photo by Gabriel Rico.



Left: Jorge Cermeno, Justin Branine, and Chris Farmer place the senior class 1992 rock on The Mound. Photo by Gabriel Rico.







Above: Clockwise Deanna Shaffer, Jonathan Thompson, Danny Smith, Curtis Horton, Lori James, and Jorge Cermeno enjoy some real mud volleyball.

Right: The Incredible Hulk or just another victim of mud volleyball?



Below: Jill Stephens raises a victory sign as Johnnie Myers, Don Vawter, and Barb Henthorn continue wading in the mud.

Photos by: Gabriel Rico



# G O D S P E L L



Above: Angie Fogo and Jenny Muret look on as Seth Bate does a "righteous rap."

The Homecoming production of "Godspell," took many hours of work and creativity, producing an incredible show. Under Allyson Moon's direction, the original score was edited to create a loving cross-cultural, global, and unified example of Jesus' message. Music was arranged by Mitch Todd and Terry Quiett. They were joined by Trevor Leffingwell and Leroy Worley to create a current, popular sound.

**"Love your neighbor  
as yourself."**



Above: Director Allyson Moon takes the center stage. Photo by Kathy Wilgers.



From left: Barb Henthorn, Chris Cheatum, Kyndal Smith, Bryan Dennett, Rodney James, Seth Bate, John Rardin, Jessica Callison, Paul Brown, Scott Shipman, Valerie Mellow, Kelley Rogers, Jenny Muret, and Angie Fogo. Photo by Kathy Wilgers.

# ALL MY SONS



On November 13-16, the Campus Players presented All My Sons. This drama, by Arthur Miller, was directed by Roger Moon. The performance was done "in-the-round" in Helen Graham Little Theatre, which added to the challenge of the project.

The story revolves around the lives of the Keller and Deever families during World War II. Joe Keller and Steve Deever ran a machine shop which made airplane parts. Due to some of the parts being faulty, Deever was sent to prison while Keller was freed. When only one of Keller's sons returns from the war and the late son's girlfriend arrives back home, the family begins to struggle with several conflicts.

Cast members included Michael Dickey, Stu Graham, John Zink, Geoffrey Barnett, Heather Jacobs, Wendy Steiner, Denise Wagner, Marci Stucky, and York Moon.



# QUEEN CANDIDATES

The Homecoming Convocation took place October 16th in Richardson Auditorium. The fall sports teams were introduced by various coaches and players. Bryan Dennett introduced the Homecoming Queen candidates and their escorts. The 1990 Homecoming Queen, Kim Fort, crowned Amy Conklin as the 1991 Southwestern College Homecoming Queen.

Top left: Julie Pettey, a junior from Bloomington, Illinois, is the daughter of Mr. and Mrs. Tom Pettey. She was nominated by the junior class.

Center: Gloria Morey, of Baleares, Spain, is the daughter of Mr. and Mrs. Sebastian Morey. She is a junior and was nominated by Broadhurst Hall.

Bottom left: Lori James, from Wichita, Kansas, is the daughter of Dr. and Mrs. Donald James. She is a junior, and was nominated by the sophomore and senior classes.



Above: Amy Conklin, a junior from Hugoton, Kansas, was the 1991 Homecoming Queen. She is the daughter of Mr. and Mrs. David Conklin. Amy was nominated by A Capella Choir.

Below: Ginger Cauble, a senior from Sedgwick, Kansas, is the daughter of Mr. and Mrs. Jack Cauble. She was nominated by Shriwise Apartments.



It was exciting to be such a big part of one of Southwestern's greatest homecoming celebrations ever!

Amy Conklin, Homecoming Queen

Top: Thad Leffingwell, from Elkhart, Kansas, is the son of Mr. and Mrs. Richard Leffingwell. Thad is a senior and was nominated by the golf team.

Center left: Chris Farmer, from Blue Springs, Missouri, is the son of Mr. and Mrs. Doug Farmer. Chris is a senior and was nominated by the Thetas.

Center right: George Cermeno, from Mercedes, Texas, is the son of Mrs. Laura Robledo. George is a senior and was nominated by Sigma Iota Sigma.

Bottom left: Andy Stephens, from Winfield, Kansas, he is the son of Mr. and Mrs. Bill Stephens. Andy is a junior and was nominated by the junior class.



The 1991 Ugly Man of Southwestern College was Curtis Horton from Flat Rock, Alabama. Curtis the the son of Mr. and Mrs. Idell Horton. He is a senior and was nominated by Sutton Hall.

# UGLY MAN CANDIDATES



# C R O W N I N G C E R E M O N Y

Ugly Man 1991 candidates: Thad Leffingwell, escort Kim Fort; Andy Stephens, escort Jill Stephens; Curtis Horton, escort Sara Rogers; Jorge Cermeno, escort Denise Rausch; and Chris Farmer, escort Brenda Allen.



Homecoming Queen candidates: Lori James, escort Mike Rose; Amy Conklin, escort Jerrod Wheeler; Gloria Morey, escort Brian Williamson; Julie Pettey, escort Bryan Davis; and Ginger Cauble, escort Jason Diesker.



Lower left: Amy Conklin was crowned Homecoming Queen 1991. She was escorted by Jerrod Wheeler.



Lower right: Curtis Horton became the Ugly Man of 1991.







Top: Carl and Mary Lou Martin got a nice ride in the rumble seat, one of the perks of being Grand Marshall.

Center: Cynthia Ramirez, Dianna Zampieri and a lot of happy kids enjoy riding in the Homecoming parade.

Bottom: Danny Smith, Jay Leach, and Chris Fort "Sail the Magic Waters of Southwestern" after winning 1st in the Presentation awards.



Top: Jane Bodman and Kyndal Smith cruise down College Street representing Future Educators of America.



Center left: The SC cheerleaders lead off the Homecoming Parade.



Center right: Roxy Callison and two alumni chat while waiting for the start of the parade.

Bottom: SGA/SAA won Best Overall Theme for their float "A Touch of Magic."



All photos on the Homecoming pages were taken by Kathy Wilgers.

Right: Sigma Iota Sigma members and their float.



Below: Kristina Harding, admissions office secretary, and her family pose for a picture during the parade.



Above: Bob Jewitt and Clifton Coleman anxiously await the start of homecoming festivities.



Left: Amy Conklin and Jerrod Wheeler along with Brandon Haynes and his date enjoy the homecoming dance held in the student center.



# H A L L O W E E N



"Oh, Wow! Those do look like  
"Jinx" socks."  
Cheryl Rude



Top left: Carl Martin - President of Practical Jokes.  
Top right: Jeanne Dexter's bunny suit suffers drooping of the ears.  
Bottom left: Jean Nettrouer, Kay Newton, and Pat Williams model their gypsy garb.  
Bottom right: Cheryl Rude shows off her "Jinx" socks at the Sutton Center Halloween Party as Heather Betts watches the activities.



# CANDIDS



Top left: Nick Garcia and Jorge Cermeno support each other after a long hike up the 77 steps.

Top right: Communications Clerk, Joann Butler, is known for her cheerful "Southwestern College."

Center left: Brian McGee and Doug Frahm are caught in mid-air during the Steeple Chase. Photo by Paul Brown.

Center right: President Carl Martin looks in disbelief at his doughnut hole birthday cake.

Lower: The radio station, KSWC, is a favorite haunt of Cristy Baugher.

# SWEETHEART DANCE



“Although getting everything organized for the dance was stressful, the outcome made everything worthwhile.”

Becca Swenson and Cetra Oberhelman  
Pi Delta Sigma members

Top: Jay Wilson, Kerrie Bennett, and Lisa Buller take a break from dancing to enjoy Valentine's cookies and punch.

Right: Becca Swenson, Cetra Oberhelman, and Nancy Lewandowski pose for a friendly picture at the dance.

Photos by: Stephanie Wall.







Top: Representing Southwestern College on the Choir tour: Angie Fogo, Terry Quiett, Mitch Todd, and Kim Fort. Scary, huh? Photo by Stephanie Wall.

Center: At a fall convocation, Glenna Burden and Sudie White, of the debate team, demonstrated their persuasiveness. Also pictured are Carson Brackney and Chad Leonard. Photo by Bobbie Finch.

Bottom: Seth Bate convinced Tom Chapin to autograph an album after his concert.



Above: Jill Stephens was all smiles at the prospect of making money for the Campus Players.



Right: Los Ninos Del Norte, Mexican Children Dancers from Wichita, danced the traditional Clearly Canadian Baile.

All photos on pages 140 and 142 by Seth Bate.

The Festival of Cultural Diversity on Southwestern campus was sponsored by "Two Paws Up Productions," growing out of the combined forces of the Arts Management Class of Jeanne Dexter and Roger Moon, the Student Life Task Force for Cultural Diversity, and the Theatre Department at Southwestern College.

Activities during the week included academic cultural games, worship, Oriental, Cajun and French cuisine, a production of a French comedy, and academic focus upon cultural diversity in many fields of study.





Above: Cheryl Burr sold KSWC/SCTV T-shirts aggressively, while Randi Jennings tries to smile her approval.

Right: Promoting a tape of religious songs, Mitch Todd gave an impromptu performance.

Below: The Campus Players food booth was a social center. Marci Stucky, Scott Shipman, Jill Stephens, Joy Hathaway, and Missy Lupton.





J  
A  
N  
  
T  
E  
R  
M





Opposite page, top: Mexico Jan Term trip. 1st row: Carolyn Herman, Karen Clum, Lucinda Pontious, Cristy Baugher. 2nd row: Joan Caldwell, Jody Watkins, Kim Fort, Joy Hathaway. 3rd row: Amy Conklin, Seth Bate, and Ken Andert. Not pictured: Bobbie Finch.

Opposite page, lower left: Pacific Northwest Marine Biology trip. 1st row: Carla Waller, Tina Kelley, Greg Stoppel, Britt Ford, Brandon O'Brien, Doug Wolff, Shane Abbott, Jason Belden, Brandon Haynes. 2nd row: Matt Buchanan, Julie Sheets, Tosca Ford, Kyndal Smith, Danny Smith, Dr. Charlie Hunter, Aaron Murray, Brian Ziegler, and Rick Cox. Photo by Stephanie Wall.



Top left: Pat Sloop taught a class on "Vulnerable Populations." From left: Barbara Malone, Jim Cunningham, Bill Dungan, Vicki Cornford, Shawn Daniels, and Curtis Hernandez.

Center: "Urban Legends" was taught by Jeanne Dexter and Lyle Weinert. From left: Shannon Folck, Lori Schiff, Dr. C. Orville Strohl, Jamie Morris, Teresa Peters, and Angela Bruce.

Lower center: Australia biology trip students enjoyed the tropical rain forest.

Lower right: Tamara Volbrecht, Yuko Sakurai, Paul Brown, Rod Gray, Melody Reerson, Lela Jennings, Ben Trujillo, La Randa Jennings, and Cliff Coleman studied Japanese Cinema under Bill DeArmond.



# T A L E N T S H O W



Above: Theta pledges Jay Wilson, Jon Schneider, Matt Woodard, and Paul Brown look to their fearless leader Craig Thompson. The Theta pledges captured a first place prize with their rendition of "Stand by Me."

Right: Barb Henthorn and John Rardin give each other a good luck hug. These two performed solo vocal acts for the talent show.



“  
There is no substitute for  
talent. Industry and all the  
virtues are of no avail.

Aldous Leonard Huxley

”



# SPRING FORMAL



Top: Several SC students show their approval of the beautiful decorations at the Spring Formal.

Above: Craig Thompson, Kelly Goertz, Julie Pettey, and Ginger Cauble all smiled when the photographer said, "Say cheese!" Come on Doug don't be so serious.

# M A D W O M A N O F C H A I L L O T

“

We all need to take a lesson from the Countess and realize it is what people are inside that matters, not the riches or corporations they accumulate.

Kelley Rogers

”

The Campus Players of Southwestern College presented The Madwoman of Chaillot, by Jean Giraudoux, as their spring selection. Kelley Rogers played The Countess Aurelia, an eccentric old lady trying to do some of the things that many of us would like to do.

Allyson Moon directed the presentation. Other cast members were: Scott Shipman, Sally Smith, Stuart Graham, John Rardin, Jessica Callison, Diana Zampieri, Joy Hathaway, Lael Porter, Sarah Dillingham, Sara Callendar, Missy Lupton, Brandon Rhodes, John Zink, Chris Cheatum, Chad Prilliman, Paul Brown III, Heather Jacobs, Jenny Muret, and Angie Fogo.

Right: John Rardin, Kyle Rhynerson, and Sara Dillingham.



Kelley Rogers played The Countess Aurelia, the Madwoman of Chaillot.



# FOUNDERS DAY

Top left: Founder's Day 1992 celebrated the 106th birthday of Southwestern College. Stephen Hiebsch, class of 1970, gave the Founder's Day address. Photo by Kathy Wilgers.

Below: Keith Chuvala presented music as part of the entertainment for the birthday bash. Photo by Mike Conover

Bottom left: Jennifer Barnes really got a kick out of dancing with the Jinx. Photo by Mike Conover.



It took great effort and organization to pull off the Founder's Day Birthday Bash. Volunteer students helped personally phone all alumni to verify reservations. Samantha Hendricks of the Development Office held informational meetings with students who "sponsored" tables at the alumni banquet. Other students wrote thank you notes. The long hours spent by staff and students in preparation for Founder's Day was worth the effort. The banquet, dance, convocation, and other activities were executed with class.



The class of 1992, professors, classmates, and friends gathered Friday, May 1, 1992 for Honors Convocation. The seniors waited outside the library trying to remember how to put on graduation robes and mortar boards. In Richardson, everyone else was being seated. As the seniors approached and marched up the 77 steps whispers floated about Governor Joan Finney and if she was going to make it.

During the "Recognition of Special Honors," awards were given to the Valedictorians, Presidential Scholars, Mastin Scholars, United Methodist Scholarship recipients, and the Gilmour-Martin-Kieler Foreign Language Award recipients. Recognition was also given to students for the Dean's Honor Roll, Senior Assistantships, the Junior Marshals, the Debate Team, and SHARE. The Masterbuilders were announced along with Who's Who Among Students in American Universities and Colleges. Congratulations to all who were nominated, awarded, recognized, and honored. Julie Schuler, Director of Admissions, received the Staff Citation and to Michael Wilder received the Faculty Citation.



Above: Kansas Governor Joan Finney spoke to the Honors Convocation. Photo by Kathy Wilgers.

Below: Masterbuilders for 1991-1992 are 1st row: Bryan Dennett, Kim Fort. 2nd row: Jennifer Barnes, Trevor Leffingwell, Thad Leffingwell, and Neil Bass.





Above: The Class of 1992 Valedictorians: Thad Leffingwell, Vicki McKain, Karen Clum, Ginger Cauble, and Mitch Todd.



Above: In the traditions of Southwestern College, the faculty honored the graduates on their way to Richardson Auditorium.

**Junior Marshals:** Julie Pettey and Christa Pickens.

**Mastin Scholars:** Mark Androes, Richard Rawlings, and Andy Stephens.

**United Methodist Scholarships:** Curtis Hernandez, Heather Jacobs, Kiffany Knoll, George Stover, Stephanie Wall, and Debra Woodall.

**Gilmour-Martin-Kieler Foreign Language Awards:** Suzanne Johnson and Sara Callender.

**Who's Who Among Students in American Universities and Colleges:** Jennifer Barnes, Jessica Callison, Ginger Cauble, Keri Cowel, Roger Crossman, Stephanie Drennan, Bryan Dennett, Suzanne Fiske, Kim Fort, Jana Gaston, Barb Henthorn, Carmen Hopkins, Bob Jewett, Rachelle Johnson, Dawn Kelley, Thad Leffingwell, Julie Leonard, Roletha Looney, Vicki McKain, Phil Moorhouse, Jana Nittler, Sonja Piland, Lars Rognlid, Marcia Stucky, Jonathan Thompson, Jody Watkins, Leroy Worley.

# GRADUATION



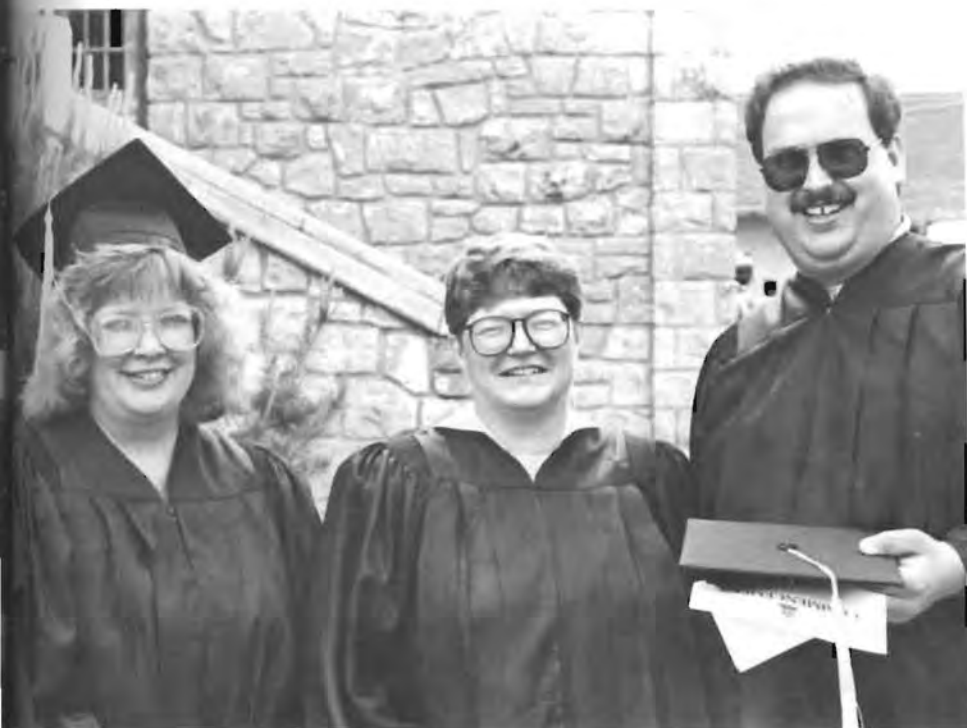
Above: Dean of the Faculty and Provost Antoinette Harrison, Commencement speaker Xernona Clayton (Corporate Vice President - Urban Affairs, Turner Broadcasting), and Director of Admissions Julie Schuler.

Below: Most of the Class of 1992 right before they marched to Commencement.

Below: Bart Dennett is happy, but Julie Arterburn is thrilled to be graduating.







Above: Smiling Roxy and Norman Callison flank graduated daughter Jessica.



Top left: Efrain Quezada, Gabriel Rico, Bobbie Finch, and Charles Rowley.

Top right: Sonya Piland.

Center left: Lori Branine, Eileen Joy, Aaron Wise.

Left: Look out world! Leroy Worley and Keri Cowel.

Right: Director of Social Work Pat Sloop poses with graduates Barbara Malone and Freida Andrews.



Right: Greg Peoples, Clifton Coleman, Ivory Wilson, and Victor Urieta.



Right: The 1992 Masters graduates.



# INDEX

**A**

A CAPELLA CHOIR 67  
Abbott, Shain; 32  
Abbott, Shane; 16, 143  
Adams, Dale; 48  
ADJUNCT FACULTY 46 - 47  
ALL MY SONS 129  
Allen, Brenda; 40, 74, 132  
Allen, Denise; 16, 54, 74, 118  
Allen, Linda; 4  
Allen, Melanie; 26, 67, 74  
Allton, James; 32  
Anderson, Dale; 25, 32, 91  
Anderson, Don; 40, 63  
Anderson, Monroe; 32  
Anderson, Raymond; 40  
Andert, Ken; 40, 77, 143  
Andes, Kelly; 26  
Andrews, Freida; 4, 77  
Andros, Mark; 26, 109, 121  
Ankrom, Larry; 48  
Archambeau, Mary; 32  
Archambeau, Ruth; 40, 86  
Arterburn, Julie; 4  
Askrens, Marion; 4, 68  
ATHLETIC TRAINERS 113  
Atkins, Marilyn; 16  
Atwater, Kelly; 16

**B**

Bachmeier, Crystal; 16  
Bahruth, Lisa; 26, 54, 67, 74, 75  
Bailey, Connie; 16  
Baker, John; 16, 73  
Baker, Marsha; 4  
Balthrop, Jeff; 26, 52  
Balzer, Neva; 15  
Banta, Donna; 15  
Barber, Lesa; 15  
Barbour, Paullo; 4  
Barger, Connie; 40  
Barger, Harvey; 40  
Barker, Billy; 32, 113  
Barnes, Jennifer; 4, 52, 74, 77, 147, 148  
Barnes, Richard; 40, 57  
Barnett, Geoffrey; 26, 129  
Barnett, Terry; 40, 52, 54, 126  
Barr, Robert; 15  
Bartelson, Marcia; 16  
Bass Jr., Neil; 4  
Batdorf, Pat; 16  
Bate, Seth; 3, 16, 24, 52, 58, 59, 64, 74, 128, 139, 143  
Baugher, Cristy; 32, 137, 143  
Beeney, Rex; 15  
Belden, Jason; 4, 143  
Bell, Pam; 15  
Benecke, Chrissy; 4  
Benjamin, Shawn; 32  
Bennett, Kerrie; 32, 111, 118  
Berendson, Eduardo; 15  
Bernard, Dorothy; 40  
Bertolacci, Jason; 32, 53  
Best, Timothy; 4  
Betta, Heather; 16, 74, 89, 136  
Bevis, Teresa; 15  
Bicker, Rich; 40  
Biddle, Deb; 40  
BLACK STUDENT UNION 60 - 61  
Blake, Mary; 40  
Blevins, Cynthia; 15  
Blue, Gayle; 15  
Boatright, Sherry; 15  
Bodine, Jake; 26  
Bodman, Jane; 16, 62, 63, 68, 134  
Bohannon, David; 16  
Boland, Christy; 26, 111, 115, 118



Kathleen Hushaw helps keep the Book Cave going. Photo by Kathy Wilgers.

Boone, Jennifer; 16  
Borniger, Kathleen; 15  
Boucher, Jim; 15  
Boucher, Troy; 40  
Bowlby, Tom; 40, 80  
Brackney, Carson; 16, 53, 139  
Bradley, Randy; 48  
Branine, Justin; 4, 126  
Branine, Lori; 4, 62  
Branine, Tina; 16, 111  
Braungardt, Jamie; 15  
Brazil, Brian; 32  
Brazil, David; 16  
Brenn, Wendy; 26, 54, 67  
Brewer, Charlotte; 40  
Brewster, Kim; 26  
Bridges, Trevor; 32, 53, 95  
Britton, Chad; 16  
Broadhurst, Fran; 68  
Brock, Greg; 32  
Brotton, Twila; 15  
Brown, Bonnie; 32  
Brown, Courtney; 26, 101  
Brown, Paul; 17, 64, 67, 72, 118, 128, 137, 143, 144  
Brown, Robert; 17  
Bruce, Angela; 17, 143  
Bruce, Peggy; 17  
Bruton, Cathy; 4, 62  
Bryant, Christie; 15  
Buchanan, Matt; 4, 54, 143  
Bucher, Tamara; 15  
Buechner, Lannie; 40  
Bugbee, Amy; 15  
Bugbee, Scott; 4, 113  
Buie-Collard, Geoffrey; 15  
Buie-Miller, Sue; 15  
Buller, Lisa; 32, 92, 95, 108, 109, 118, 119, 121, 138  
Bumgarner, Grant; 15  
Bumgarner, Hal; 17  
Bumgarner, Tim; 26  
Bumpus, Katie; 40, 78  
Bumsted, Susan; 41  
Burden, Glenna; 32, 53, 57, 70, 139  
Burgell, Carol; 15  
Burr, Cheryl; 17, 141  
Burroughs, Carolyn; 17  
Burroughs, Darren; 17  
Burton, Lori; 15  
Butcher, Brady; 17  
Butler, Clayton; 15  
Butler, Joann; 41, 137  
Butler, Martha; 4

**C**

Cain, Brad; 17  
Caldwell, Joan; 41, 141  
Cales, Michelle; 26  
Calhoun, Janell; 4, 76, 75111, 122  
Callender, Sara; 26, 67  
Callins, Reggi; 122  
Callison, Jessica; 4, 31, 64, 67, 128  
Callison, Rosetta; 41  
Callison, Roxy; 46, 134  
Calvin, Linda; 41  
Camacho, Ramon; 17, 94  
Camp, DeAnn; 15  
Campbell, Greg; 5, 66  
Campbell, Lisa; 15  
Campbell, Mark; 15  
Campos, Martin; 32  
CAMPUS PLAYERS 64  
Carlson, Darci; 32  
Carnes, Jeanene; 5, 68  
Carpenter, Donna; 41  
Carr, Phil; 41, 71, 113  
Carroll, Darla; 15  
Carson, Aaron; 33  
Carson, Sherry; 5, 62  
Carter, Richard; 5  
Cauble, Ginger; 5, 52, 130, 132, 145, 149  
Cepeda, Tomas; 33, 53, 73  
Cermeno, Jorge; 5, 72, 85, 95, 126, 127, 131, 132, 137  
Chaaban, Amy; 15  
Chalmers, David; 5  
Chapman, Les; 17  
Charles, Larry; 33  
Charlton, Judith; 41  
Cheatum, Chris; 33, 82, 128  
CHOIR TOUR 75  
Chuvala, Keith; 41, 68, 147  
Chuvala, Sharon; 5  
Clay, Michael; 17  
Clayton, Eleanor; 15  
Clum, Karen; 5, 58, 62, 71, 143, 149  
Coleman, Clifton; 5, 135, 143  
Coleman, Robert; 5, 102  
Coleman, Willie; 5, 103, 118  
COLLEGIAN 58 - 59  
Collins, Ruth; 15  
Conception, Noel; 5  
Conklin, Amy; 17, 8038, 52, 54, 67, 75, 130, 143  
Conover, Mike; 41  
CONVOCATIONS 78 - 79  
Cooper, Rachel; 15  
Cornejo, Karen; 17  
Cornford, Vicki; 17, 143  
Cosby, Theresa; 5  
Couch, Patricia; 33  
Cowdrey, Charlie; 41  
Cowel, Keri; 5  
Cox, Beverly; 41, 80  
Cox, Norma; 41  
Cox, Rick; 17, 143  
Craft, Connie; 41  
Craft, Katherine; 15  
Creach, Jeff; 5, 109, 118  
CROSS COUNTRY 108 - 109  
Crossman, Roger; 5  
Crow, Will; 41, 47  
CULTURAL DIVERSITY 140 - 141  
Cummins, Kris; 26, 73, 112  
Cummins, Kurt; 26, 73, 112  
Cunningham, Jim; 5, 77, 143



# D

Daniel, Dan; 41  
 Daniels, Allen; 15  
 Daniels, Kim; 15  
 Daniels, Shawn; 33, 14354,  
 Davenport, Chris; 26, 31, 52, 70, 118  
 Davis, Bryan; 17, 75, 132  
 Davis, Janet; 17  
 Davis, Michelle; 17  
 Day, Jimmie; 18  
 Day, Michelle; 33  
**DEAN'S KICKBACK DAY 127**  
 DeArmond, Bill; 41  
 DeArmond, InSoon; 41  
**DEBATE 53**  
 DeBoard, Melvina; 15  
 Decker, Ralph; 65  
 Defore, Brenda; 15  
**DELTA SIGMA THETA 76**  
 DeMart, Mary; 15  
 Denker, Peggy; 48  
 Dennett, Bart; 5  
 Dennett, Bryan; 6, 52, 67, 72, 75, 126, 128, 148  
 Dennett, Rosann; 26, 62, 69  
 Denny, Andy; 26, 73  
 Denson, Tricia; 27  
 DePue, Tamara; 18, 95, 108, 109, 118  
 Dettler, Mark; 6  
 Dexter, Jeanne; 41, 136  
 Dexter, Jeff; 6  
 Dexter, Jennifer; 6  
 Dexter, Mikel; 42  
 Deyoe, Steve; 33  
 Dick, Debra; 15  
 Dickey, Michael; 33, 125, 129  
 Dickinson, Jessica; 6  
 Diercks, Regina; 27  
 Dietrick, Connie; 48  
 Dillard, Jeff; 18  
 Dillner, Ronald; 18  
 Dinsmore, Alane; 18, 114  
 Disker, Jason; 6, 72, 132  
 Dixon, Kristy; 18, 54  
 Dobbins, Daphne; 33, 73, 106, 118  
 Doctor, Kristen; 6  
 Dolezal, Dale; 70, 118  
 Domangue, Kelli; 6  
 Douglas, Chris; 33, 72, 118  
 Douthit, Steve; 15  
 Dove, Deborah; 33, 82  
 Drennan, Stephanie; 6, 62  
 Drew, Lauri; 33  
 Dubberstein, Kirk; 42  
 Dubowsky, Lee; 42  
 Duncan, Diana; 48  
 Duncan, Janean; 6  
 Dungan, Bill; 18, 77, 143  
 Dunham, Katie; 18, 89  
 Dunlap, Ryan; 18, 113  
 Duren, Dennis; 33, 54  
 Dush, Theresa; 15  
 Dutton, Brian; 6, 15  
 Dyar, Bill; 42, 86

# E

Eads, Matt; 6  
 Eagan, Nancy; 33  
**EAGERHEART 64**  
 Eaglin, Lisa; 6  
 Eash, Jan; 18  
 Easterly, Barbara; 6  
 Eastman, Kimberly; 18  
 Ebben, Sherrill; 15  
 Edington, Dennis; 15  
 Edwards, Patrick; 33

Ehmke, Maria; 27  
 Eickmeyer, Russell; 33, 73, 118  
 Elliott, Pamela; 48  
 Endriss, Richard; 42, 80  
 Ericson, Marsha; 15, 18  
 Ervin, Tim; 15  
 Eskridge, Art; 15  
 Eskridge, Diane; 80  
 Estabrook, Aaron; 18, 57, 77  
 Estep, Coleen; 15  
 Estep, Gil; 15  
 Evans, Kelly; 6

# G

Galliart, Dave; 42  
 Gannon, Megan; 7, 42, 62  
 Garcia, Nick; 7, 72, 111, 137  
 Gasca, Sandra; 27, 61, 115  
 Gaston, Jana; 7, 31, 76, 77, 95, 108, 109,  
 Gaston, Regina; 15, 31  
 Gatton, Monty; 7  
 Gatton, Tammy; 7  
 Gerdel, Richard; 7



The FEA looked for any excuse to have food. This photo is from the Fall Appreciation Tea.

# F

**FACULTY & STAFF 40 - 46**  
 Farmer, Chris; 52, 85, 18, 72, 126, 131, 132  
**FAMILY DAY 103**  
 Feist, Chris; 27, 118, 119  
 Feldman, Justin; 6, 52, 109, 118  
 Field, Liza; 42  
 Fife, Wendy; 15  
 Filosa, Jessica; 33  
 Finch, Bobbie; 6, 56, 59, 71, 84  
 Findley, Cecil; 42  
 Pinney, Lonnie; 15  
 Fiske, Suzanne; 6, 54  
 Fite, Nancy-Jess; 48  
 Fleig, Judy; 18, 62  
 Fleming, Jayne; 15  
 Flickinger, Audra; 27  
 Flower, Bob; 15  
 Fogo, Angie; 27, 64, 73, 67, 75, 79, 82, 128, 139  
 Folck, Shannon; 27, 85, 106, 118, 143  
**FOOTBALL 100 - 102**  
 Ford, Britt; 18, 38, 143  
 Ford, Gary; 15  
 Ford, Tosca; 6, 143  
 Forehand, Sean; 6  
 Forsythe, Christopher; 33  
 Fort, Kim; 7, 85, 106, 132, 139, 143, 148  
**FOUNDER'S DAY 147**  
 Fowler, Dirk; 18, 63, 113  
 Frahm, Doug; 7, 109, 118, 137  
 Franklin, Larry; 18, 80  
 Frazier, Donna; 7  
 Frazier, W.; 15  
 Freeman, Diane; 15  
**FRESHMEN 32 - 38**  
 Friess, Gina; 27, 111  
**FUTURE EDUCATORS OF AMERICA 68, 134, 154**

Gerdes, Kathy; 42  
 Gibson, Benn; 42  
 Gibson, Richard; 15  
 Gifford, Judy; 7  
 Gifford II, Don; 18, 72  
 Gill, Scott; 48  
 Glasgow, Cathy; 15  
 Glover, Gillian; 18  
**GODSPELL 128**  
 Godwin, Sheana; 15  
 Goedecke, Patty; 19  
 Goertz, Cynthia; 46  
 Goertz, Vernon; 47  
**GOLF 112**  
 Golay, Denys; 19  
 Good, Julie; 48  
 Goodson, Dee Ann; 7  
 Goodwin, Forrest; 34  
 Gordon, Maria; 19  
 Gose, Deborah; 48  
 Grabow, Geoff; 42  
 Graham, Stuart; 7, 64, 129  
 Grant, Jennifer; 34, 73, 88, 104  
 Graves, Amy; 67, 27  
 Gray, Ina Turner; 68  
 Gray, Rod; 34, 143  
 Gray, Wallace; 42, 68  
 Green, Cedric; 7  
 Green, Fred; 7, 100, 101  
 Green, Peter; 15  
 Green, Tamra; 7  
 Greever, Bonnie; 15  
 Gregory, Rick; 46  
 Griffin, Chris; 34  
 Grifford, Jeanie; 42  
 Groene, Cindy; 42, 47  
 Grow, Christi; 42  
 Guidry, Alton; 19  
 Gulley, Jason; 19, 112

Gunn, Lisa; 48  
Guthrie, Michael; 19

## H

Haffner, Kip; 19, 112  
Hall, Sharene; 19  
HALLOWEEN 136  
Hammer, Joy; 46  
Hankins, Josh; 34  
Hankins, Linda; 48  
Harden, Shawn; 34, 88, 104  
Harding, Kristina; 42, 135  
Hardtarfer, Scott; 27  
Hargis, Mike; 27, 73, 92  
Harman, Cindy; 7, 62  
Harper, Ambra; 7  
Harris, Cyndee; 19  
Harris, Dixie; 19  
Harris, Kimberly; 19  
Harrison, Antoinette; 42, 69  
Harrison, Natalie; 34, 89, 113  
Harsh, Wilda; 7  
Hart, Poesidon; 34  
Hatfield, Dixie; 48  
Hathaway, Joy; 27, 82, 69, 141, 143  
Haynes, Brandon; 27, 54, 62, 67, 75, 135, 143  
Heersche, Lisa; 34  
Heim, Rhonda; 7  
Helmer, Jim; 42, 83  
Helphingstine, Bill; 42  
Hendricks, Samantha; 43  
Henley, Traci; 7, 113, 115  
Henthorn, Barb; 8, 54, 64, 65, 67, 74, 127, 144  
Heptig, Joe; 47  
Herman, Carolyn; 43, 143  
Hern, Sarah; 43, 74, 78, 111, 115  
Hernandez, Curtis; 27, 72, 109, 118, 143  
Hessini, Marguerite; 43  
Heyen, Gina; 8  
Hickey, David; 34  
Hill, Sue; 19  
Hillman, Deborah; 19, 25, 67  
Hinson, Nan; 43  
Hittle, Chad; 19  
Hoberecht, Brian; 19  
Hoellgen, Thomas; 48  
Hoff, Chad; 34, 52, 73  
Hollman, Alice; 19  
Holloway, Sandy; 27  
Holmes, Tony; 8  
Holzman, Jean; 19, 53  
HOMECOMING 132 - 135  
HONOR'S CONVOCATION 148 - 149  
Hooker, Sharon; 19  
Hopkins, Carmen; 52, 8  
Horning, Doris; 43  
Horton, Curtis; 8, 72, 101, 127, 131, 132  
Horton, Jerry; 15, 118  
Houser, Amy; 27  
Houser, Gerald; 8  
Howard, Brent; 8  
Howard, Brian; 8  
Hudson, Gary; 27, 72  
Hudson, Ron; 46  
Huenergardt, Gretchen; 34  
Huges, Kelly; 15  
Humphries, Julie; 15  
Hunter, Charles; 43, 52  
Hushaw, Kathleen; 27  
Hutchens, Chris; 27  
Hutchinson, Chris; 92  
Hyatt, Bob; 19  
Hynd, Mary; 8

## I

Inthavongas, Phet; 15  
Irvin, Mary; 8  
Irvin, Shirley; 8  
Ishak, Adel; 8  
Ishizuka, Koichi; 34, 3

## J

Jackson, Carla; 28, 66  
Jackson, Stan; 8  
Jacobs, Heather; 28, 64  
James, Jim; 34  
James, Johnny; 28, 54  
James, Lana; 28  
James, Lori; 19, 85, 127, 130, 132  
James, Rodney; 20, 52, 20, 61, 66, 102, 128  
JAN TERM 142 - 143  
Jenkins, Red; 8, 77, 99, 100  
Jennings, Cathy; 15  
Jennings, Diana; 43  
Jennings, LaRanda; 20, 141, 143  
Jennings, Lela; 143  
Jennings, Mary; 8, 74  
Jetty, Brett; 20  
Jewett, Robert; 8, 72, 97, 135  
Johnson, Ellen; 8  
Johnson, James; 34, 90, 118, 120  
Johnson, Jamie; 28, 73, 111, 114  
Johnson, Jermaine; 34  
Johnson, Jeroid; 34, 100, 102  
Johnson, Rachelle; 8, 57, 71, 74, 77  
Johnson, Raymond; 48  
Johnson, Reba; 43, 63  
Johnson, Suzanne; 8, 74  
Jones, Allan; 15  
Jones, Anita; 8, 80  
Jones, Carolyn; 15  
Jones, Larry; 34, 90, 118  
Jones, Lori; 15  
Jones, Rex; 15  
Jones, Shaun; 90, 34  
Jordan, Andrew; 9, 101  
Jordan, Katie; 15  
Jordan, Stephanie; 20, 31  
Jordan, Travis; 9, 10, 72, 109  
Joy, Eileen; 15  
JUNIORS 16 - 24  
Juul, Cheryl; 28

## K

Kaiser, Barbara; 43  
Kargbo, Antony; 20  
Kay, Tim; 20  
Kelley, Dawn; 9  
Kelley, Tina; 28, 38, 74, 143  
Kelley, Vickie; 28  
Kelly, Patrick; 15  
Kennedy, Jonathan; 90, 34  
Kennedy, Shari; 9  
Kincaid, Michelle; 15  
King, Gary; 43  
King, Paul; 9  
Kirkland, Mike; 43, 93  
Kirkwood, Heather; 52, 89, 35  
Kiser, Bryan; 28  
Kiser, Joyce; 43  
Kisner, Joyce; 20  
Klima, Eric; 20  
Knoll, Angela; 28  
Knoll, Kiffany; 89, 20  
Koenke, Cathy; 20  
Koontz, Sara; 15  
Kough, Jeff; 9, 20  
Kough, Joanne; 15  
Kough, Patricia; 15  
Kratovich, Lara; 9  
Kratt, Julie; 9  
Kuroda, Tomomi; 67, 35

## L

Lacey, Cheryl; 48  
Lampe, Shawna; 9  
Lance, Michelle; 9, 57  
Landreth, Mary Therese; 43, 62, 69  
Landry, Mary; 9, 62, 69  
Langford, Charlie; 20  
Langhorst, Larry; 20  
Lankford, Jana; 28  
Law, Mary; 15  
Lawson, Claudia; 9  
Leach, Jay; 28, 54, 72, 118, 133  
Leffingwell, Thad; 9, 52, 97, 112, 131, 132, 148, 149  
Leffingwell, Trevor; 9, 67, 75, 148  
Leisinger, Jennifer; 15  
Lemoine, Randy; 35, 73  
Leonard, Chad; 20, 53, 139  
Leonard, J.; 9, 75



Waiting for *Elijah* rehearsal is a good time to catch up on what's happening.

Lewandowski, Cathy; 43  
 Lewandowski, Nancy; 20, 138  
 Lewis, Ellen; 48  
 Lewis, Ryan; 20  
 Lindsey, Sandra; 15  
 Lochrs, Vicki; 15  
 Logan, Earlene; 20, 42  
 Long, Kathy; 15  
 Long, Kent; 43  
 Looney, Rolettha; 9  
 Love, Pam; 20  
 Lovell, Shane; 28  
 Lowe, Susan; 43  
 Lundy, Steve; 15  
 Lupton, Missy; 28, 141  
 Lybarger, Eric; 9



Macias, Tammy; 21  
 Mackey, Carol; 15  
**MADWOMAN OF CHAILLOT** 146  
 Madrid, Al; 53, 78, 95  
 Maendele, Jiggs; 10, 72, 108, 109, 118  
 Majher, Rebecca; 21  
 Malone, Barbara; 10, 77, 143  
 Manderino, Michael; 15  
 Mar, Paulette; 10  
 Marczynski, Anna; 10, 77  
 Marker, Beth; 44, 47  
 Markle, Brian; 21  
 Marshall, Morgan; 10  
 Martin, Carl; 44, 78, 133, 136, 137  
 Martin, David; 35, 109  
 Martin, Kris; 10, 53, 57, 70  
 Martin, Mary Lou; 46, 65, 93, 133  
 Martin, Megan; 65  
 Martin, Robert; 15  
 Martin, Steve; 15  
 Massey, Elma; 49  
 Mather, Dale; 15  
 Mathew, Stephanie; 15  
 Mathie, David; 44, 66  
 Mattingly, Norma; 15  
 Maxwell, Carol; 10  
 May, Debbie; 15  
 Mayberry, Jim; 35  
 Mayberry, Matt; 21, 57  
 Mazzanti, Jack; 44  
 McCalla, Scott; 49  
 McCauley, Ruth; 15  
 McClary, Maureen; 20  
 McClure, Trudy; 35  
 McCune, Roger; 9  
 McDermott, Lucas; 15  
 McElwain, Terry; 35  
 McGee, Brian; 20, 109, 118, 120, 137  
 McGee, Stefanie; 28  
 McGlasson, Steven; 9  
 McHaffie, Rich; 10  
 McKain, Vicki; 10, 149  
 McKellips, Brian; 28, 73  
 McLaughlin, Stacy; 10  
 McMillen, Jennifer; 35, 91  
 McNeish, Marilyn; 49  
 McNett, Nancy; 15  
 McWhirt, Amy; 35, 58, 59, 91  
 Means, David; 15  
 Means, Kim; 10, 62  
 Medlock, Matt; 21, 101  
 Mendoza, Barbara; 28  
**MEN'S BASKETBALL** 116 - 117  
**MEN'S TENNIS** 107  
 Merritt, Adrienne; 10  
 Merrow, Valerie; 10, 128  
 Mettling, Dana; 21  
 Metz, Becky; 10

Milby, Cindy; 21  
 Miller, Dawn; 10  
 Miller, LaVerne; 15  
 Miller, Lorie; 10  
 Miller, Myrtie; 35  
 Miller, Rodney; 21  
 Minor, Rodney; 25, 35  
 Mitchell, Clay; 21  
 Mitchell, Karen; 35  
 Moberg, Kenneth; 10  
 Mobley, Jonathan; 35, 72  
 Moldenhauer, Jennifer; 15  
 Moon, Allyson; 44, 64  
 Moon, Roger; 44, 64  
 Moore, Alan; 44, 68  
 Moore, Brian; 28  
 Moore, Cindy; 21  
 Moore, Eric; 28, 73  
 Moore, Mary; 49  
 Moore, Maureen; 10  
 Moorhouse, Sheree; 21  
 Moorhouse, Phil; 10, 118  
 Moran, Kristy; 15  
 Morey, Gloria; 21, 68, 130, 132  
 Morgan, Jennifer; 44, 53  
 Mork, Jeff; 21, 52  
 Morland, Dee; 15  
 Morris, Jamie; 15, 143  
 Morris, Jonathan; 35, 82, 85, 91  
 Morris, Scott; 28, 102  
 Mortimer, Karen; 15  
 Mosley, Michael; 10  
**MOUND CEREMONY** 126  
**MOUNDBUILDER** 56  
 Mulvaney, Marilyn; 21  
 Munday, Jolene; 21  
 Muret, Jenny; 35, 59, 67, 71, 75, 128  
 Murray, Aaron; 11, 143  
 Murray, Rebecca; 21  
 Musgrove, Regina; 76  
**MUSIC GROUPS** 66  
 Musson, Marcia; 21  
 Musson, Rita; 49  
 Myers, Irene; 15  
 Myers, Johnnie; 35, 127



Randy Jennings and Mike Roosevelt made big purchases at the Book Cave.



Naegele, Chris; 15  
 Nance, James; 35  
 Nasralla, Amjad; 49  
 Neal, Linda; 15  
 Needham, Kristy; 11  
 Needham, Marc; 11, 118  
 Neises, Aggie; 15  
 Nemec, Phyllis; 21, 62, 69  
 Nettleouer, Jean; 44, 136  
 Newlon, Kim; 11  
 Newton, Kay; 44, 136  
 Nichols, Dave; 44, 66  
 Nichols, Lonnie; 11, 76  
 Nickelson, Diane; 49  
 Nittler, Jana; 11  
 Norton, David; 15  
 Nubine, Keith; 11  
 Nuce, Tad; 11



O'Brien, Brandon; 35, 54, 72, 118, 143  
 O'Dell, Jennie; 49  
 O'Malley, Katherine; 36  
 O'Mara, Melinda; 36  
 Oberhelman, Cetra; 35, 73, 138  
 Oliphant, Jerry; 35  
 Olsson, Erik; 21  
**ORGANIZATIONS BANQUET** 70-71  
 Orvis, Suzanne; 21, 110, 113, 115  
 Osen, Charles; 29  
**OTHER (not by class) STUDENTS** 48 - 49  
 Owen, Anthony; 36, 72



Left: Labels can be harmful. Just ask Dean Wilke.



**P**

Page, Monica; 29  
 Palmer, Stacy; 29, 36, 104  
 Parks, Dave; 15  
 Parks, Mylea; 29  
 Parks, Susan; 22, 62  
 Partridge, Ty; 11, 118  
 Patterson, Keela; 29, 92, 104  
 Paulus, JoAnn; 22  
 Pawlowski, David; 11  
 Payne, Marcus; 44  
 Payne, Paul; 15, 114, 115  
 Peoples, Greg; 15  
 Percival, Marvin; 15  
 Perez, Pamela; 11  
 Perez, Robert; 22, 118  
 Perry, Heath; 11, 72  
 Perry, Jim; 11, 65, 118, 120  
 Peters, Rick; 44  
 Peters, Teresa; 11, 143  
 Peterson, Alan; 22  
 Peterson, Clinton; 22  
 Peterson, Fernanda; 36  
 Peterson, Laura; 44  
 Pettey, Julie; 22, 58, 62, 85, 106, 130, 132, 145  
 Phillips, William; 15  
 PI DELTA SIGMA 73  
 PI GAMMA MU 68  
 Pickens, Christa; 22, 59, 68, 71  
 Pierson, Patti; 15  
 Piha, Keith; 15  
 Piland, Sonya; 11  
 Piper, Joseph; 22, 102, 118  
 Pontious, Lucinda; 36, 143  
 Pope, Angie; 11  
 Porter, Lael; 11, 64, 67  
 Postelwait, John; 15  
 Potter, Randy; 29, 67  
 Prado, Lori; 11  
 Prilliman, Chad; 36, 73  
 Prilliman, Ronda; 29, 73, 111, 114  
 Prochaska, Caren; 11, 68  
 Proctor, Anthony; 22

**Q**

QUEEN CANDIDATES 130  
 Quezada, Efrain; 11, 95  
 Quiett, Terry; 2, 29, 67, 75, 79, 139



Koichi Ishizuka made the SC year richer by being part of our student body.



Pi Gamma Mu initiates Debra William, Alan Moore, Valerie Merrow, Keri Cowel, and Shari Prochaska.

**R**

Rahn, Christina; 36  
 Raines, Gerald; 44  
 Rains, Sheri; 29  
 Ramirez, Cynthia; 22, 77, 132  
 Rardin, John; 36, 61, 128, 144, 146  
 Raschen, Eddie; 36, 72, 95  
 Rausch, Denise; 22, 132  
 Rawlings, Ryan; 36  
 Ray, Monty; 36  
 Redford, Robert; 70  
 Redmon, Shane; 36, 90  
 Reed, Debra; 15  
 Reed, Joe; 29, 109, 118, 121  
 Reerson, Melody; 143  
 Reever, Korinna; 22, 111, 115  
 Reeves, Jane; 44, 65  
 Reid, Brian; 49  
 Reiter, Beverly; 15  
 RENOVATIONS 122-123  
 Resser, Dann; 44  
 Reynolds, Donna; 49  
 Reynolds, Middy; 12  
 Rhoads, Charlie; 36, 56, 73  
 Rhodes, Brandon; 36  
 Rhodes, Rachel; 15  
 Rhynerson, Kyle; 29, 52, 58, 146  
 Rice, Sheryl; 22  
 Rickard, Linda; 22, 68  
 Ricketts, Jimmy; 12  
 Rico, Gabriel; 12  
 Riemann, Patricia; 44  
 Rierson, Melody; 22  
 Riggs, Krystal; 36  
 Rinehart, Kim; 22  
 Rios, Miguel; 12  
 Rippe, Lori; 15, 39  
 Roberts, Gene; 12  
 Robinson, David; 36  
 Robinson, Margaret; 44  
 Rocha, Richard; 44  
 Rogers, Jane; 44, 69  
 Rogers, Kelley; 29, 64, 67, 128, 146  
 Rogers, Sara; 45  
 Rognlid, Lars; 12, 54, 67, 72  
 Rollins, Kedrick; 36, 66

Romero, Larry; 45  
 Roosevelt, Mike; 12, 64  
 Rose, Mike; 29, 132  
 Ross, Karen; 15  
 Rousselle, Judy; 22  
 Rowley, Charles; 12  
 Rude, Cheryl; 43, 45, 78, 91, 136  
 Rude, Martin; 45, 54, 91  
 Ruff, Stan; 15  
 Ruggles, Robin; 12  
 Rush, Mike; 15  
 Rushton, Shawn; 12  
 Russell, Anna; 15  
 Russell, Bobby; 12  
 Russell, Buffy; 29  
 Ruyle, Connie; 15



Lael Porter portrays one more interesting character.



SAA 54 - 55  
 SGA 52  
 SIS 74, 135  
 Sage, Angela; 36, 111  
 Sakurai, Yuko; 36, 39, 82, 143  
 Sampson, Lois; 15  
 Sandberg, Gary; 15  
 Sandell, Jeff; 37  
 Satterthwaite, Julie; 15  
 Saunders, Jeannine; 22  
 Schalk, Dan; 15  
 Schanbacher, Kelli; 29, 74  
 Scharnhorst, Michael; 15, 25  
 Schiff, Lori; 22, 143  
 Schlegel, Judy; 12  
 Schmidt, Mary; 29  
 Schmidt, Phil; 45, 68, 80  
 Schneider, Andrea; 37, 91  
 Schneider, Jon; 29, 144  
 Schneider, Steve; 12  
 Schoen, Scott; 46  
 Schroeder, Joy; 37  
 Schuler, Julie; 45, 74, 126  
 Schwabauer, Tony; 15  
 Schwantes, Nancy; 49  
 Scott, Michelle; 15  
 Seaton, Callie; 15  
 See, Dawn; 23  
 Segenhagen, Sharon; 23  
 Seidler, Ileen; 15  
**SENIORS 4 - 14**  
 Seusy, Tonja; 12  
 Shaffer, Deanna; 29, 92, 104, 127  
 Sheets, Julie; 12, 57, 74, 85, 106, 115, 143  
 Sheetz, Candace; 12, 57, 77  
 Shetlar, Harry; 15  
 Shetlar, Sharon; 45  
 Shields, Judith; 49  
 Shipman, Scott; 23, 82, 128, 141  
 Shook, Chuck; 37  
 Shook, Tim; 46  
 Short, Nancy; 15

Right: John Zink, Kelley Rogers, and Jill Stephens model the Godspell Homecoming T-Shirts.

Below: Denise Allen carries a torch in the Moundbuilding ceremony.



Shorter, Clinton; 37  
 Showalter, Judy; 12  
 Shrader, Vicky; 15  
 Shultz, Phyllis; 23  
**SIGMA IOTA SIGMA 74**  
 Simmons, Malissa; 23  
 Sirmons, Fred; 15  
 Skibbe, Brian; 37, 109  
 Slack, Rodney; 12  
 Sloop, Pat; 45  
 Smith, Bill; 15  
 Smith, Christopher; 37, 59, 71  
 Smith, Danny; 12, 127, 133, 143  
 Smith, Kyndal; 12, 57, 62, 71, 128, 134, 143  
 Smith, Larone; 13, 95, 122  
 Smith, Leigh Ann; 23  
 Smith, Sally; 13, 57, 68  
 Snyder, Michael; 29, 39, 54, 109, 118  
 Sobba, Michael; 37, 52  
**SOCIAL WORK CLUB 77, 133**  
**SOPHOMORES 26 - 31**  
 Sorrell, Barry; 23  
 Soule, Cynthia; 13, 62  
 Sowder, Krystyna; 29, 62, 69  
 Spainhour, Sam; 13, 72  
 Spainhour, Suzi; 13  
 Spencer, Howard; 37, 118, 121  
 Spencer, Jolana; 15  
 Spidel, Earl; 45  
**SPRING FORMAL 145**  
 Springer, Robin; 30  
**SPIRIT SQUAD 133**  
 Stanley, Linda; 15  
 Steiner, Wendy; 13, 63, 125  
 Steinle, Melanie; 49  
 Stephens, Andy; 23, 52, 112, 131, 132  
 Stephens, Bill; 45, 67  
 Stephens, Jill; 13, 64, 67, 75, 127, 132, 140, 141  
 Stierwalt, Donna; 13  
 Stigge, Judy; 49  
 Stockton, Jeffrey; 15  
 Stone, Gretchen; 13  
 Stoppel, Greg; 37, 38, 54, 73, 143  
 Stout, Derek; 30, 72  
 Stover, George; 37, 52, 56, 72, 93  
 Strand, James; 45  
 Stucky, Marci; 13, 24, 52, 64, 79, 124, 141  
**STUDENTS NOT PICTURED 15**  
 Stull, Janet; 15  
 Sturgis, Stephanie; 23  
 Sutton, Judi; 45  
 Swafford, Brian; 30  
 Sweet, Jason; 37, 72  
**SWEETHEART DANCE 138**  
 Swenson, Rebecca; 37, 73, 138  
 Swink, Fran; 15



Above: The Development office threw a party for the Maintenance staff after a long hard summer.

# T

Tackett, Leslie; 30  
 Tadtman, Jeffrey; 15  
 TALENT SHOW 144  
 Talley, Linden; 37, 53  
 Tanaka, Nolin; 13  
 Tarin, Junior; 45  
 Tatro, Charles; 23  
 Tatro, Karen; 23  
 Tatum, Janell; 15  
 Tatum, Kim; 15  
 Taylor, Brooke; 15  
 Tharp, Lou; 45  
 Tharpe, Clive; 15  
 THETA PHI DELTA 72, 133  
 Thomas, Jerrold; 13, 25, 98, 102, 118, 120  
 Thomas, O'Dell; 23  
 Thompson, Craig; 30, 52, 67, 72, 144, 145  
 Thompson, Jonathan; 13, 72, 127  
 Thompson, Max; 45  
 Thorpe, Jimmy; 23  
 Tillman, Irene; 30, 76, 88, 104  
 Tipps, Billy; 30, 101  
 Todd, Mitch; 3, 13, 67, 75, 139, 141, 149  
 Toler, Michael; 30, 72  
 Topper, Wilma; 45, 80  
 Torre, Chuck; 30, 72  
 TRACK 118-121  
 Travis, Cynthia; 15  
 Travis, Nancy; 15  
 Tredway, Janice; 23  
 Trent, Linda; 13  
 Trimmer, Krystal; 156  
 Trujillo, Ben; 13, 25, 94, 143  
 Tucker, J.D.; 15  
 Tucker, Jim; 54, 109  
 Tucker, Thelma; 46

# U

UGLY MAN CANDIDATES 131  
 Underwood, Julie; 30, 56, 67, 73, 84, 160  
 Urieta, Vic; 13, 25

# V

Vance, Yolanda; 23, 114  
 VanderSchaaf, Curtis; 37  
 Vann, Steve; 126  
 VanNess, Sherri; 30  
 Vasquez, Jaime; 30, 92, 109, 118, 120  
 Vawter, Don; 37, 73, 85, 92, 127  
 Villagran, Salvador; 37  
 Virden, Kathleen; 49  
 Volbrecht, Tammy; 23, 143  
 VOLLEYBALL 110 - 111  
 Vollweider, Chris; 15  
 Voss, Dana; 23

# W

Waldorf, Christopher; 15  
 Walker, Jada; 23  
 Walker, Sandy; 30, 74  
 Wall, Stephanie; 23, 52, 56, 67, 84, 160  
 Wallace, Kelly; 13, 76  
 Waller, Carla; 30, 54, 143  
 Wanasek, Sandra; 15  
 Warner, Mary; 45  
 Warren, Sarah; 15  
 Warring, Denise (Wagner); 13, 64, 67  
 Wartick, Garry; 15  
 Wasson, Dale; 13  
 Watanabe, Kazumi; 37, 56, 82, 83  
 Watkins, Jody; 14, 91, 92, 97, 109, 118, 143  
 Watkins, Kim; 15



Watters, Brian; 15  
 Webb, James; 23  
 Webb, Jason; 38, 71, 91, 92, 109  
 Webb, Marilyn; 14  
 Weber, Billy; 14  
 Wedel, Dallas; 30, 118  
 Weigle, Eddie; 14  
 Weinert, Lyle; 45  
 Welch, Matt; 45, 47  
 Wessels, Hazel; 14  
 Wetterhus, Kris; 47  
 Whaley, Karen; 14  
 Whaley, Steve; 24  
 Wheatcroft, Jim; 46  
 Wheatley, Curtis; 30, 72, 118  
 Wheeler, Jerrod; 30, 54, 70, 132, 135  
 Wheeler, Sue; 24  
 White, Patricia; 49  
 White, Ronald; 38  
 White, Sandy; 24  
 White, Sudie; 38, 53, 139  
 Widows, Thom; 14  
 Wiechman, Tracy; 24, 85, 106  
 Wilcox, Sally; 15  
 Wilder, Joyce Ann; 47  
 Wilder, Michael; 25, 38, 45, 197  
 Wilgers, Kathy; 46, 58, 59, 93  
 Wilgers, Larry; 46, 89  
 Wilke, Beth; 15  
 Wilke, Steve; 14, 46  
 Wilken, Chris; 15  
 Wilkinson, Carol; 15  
 Williams, Debra; 14, 68  
 Williams, Mark; 14  
 Williams, Pat; 14, 46, 136  
 Williams, Roger; 15  
 Williamson, Brian; 24, 72, 118, 132  
 Willis, Dina; 24  
 Willis, Sherry; 15  
 Willoughby, John; 46

Wilson, Caroline; 49  
 Wilson, Ivory; 14, 25, 35, 39, 157  
 Wilson, Jay; 38, 72, 109, 138, 144  
 Wilson, Melinda; 15  
 Wilson, Ron; 14  
 Wilson, Stacy; 30  
 Wimmer, Bob; 46  
 Wing, Lena; 49, 126  
 Wingate, Jason; 24  
 Wise, Aaron; 14  
 Wolfe, Pamela; 49  
 Wolff, Doug; 24, 52, 143, 145  
 WOMEN'S BASKETBALL 114 - 115  
 WOMEN'S TENNIS 106  
 Woodall, Debra; 38, 59  
 Woodard, Matthew; 38, 72, 109, 118, 144  
 Woodring, Ken; 47  
 Worley, Kathy; 15  
 Worley, Leroy; 14, 65  
 Wray, Juli; 14, 85, 106, 118  
 Wright, Debra; 30, 74

# Y

Ybarra, James; 15  
 Yingling, Michelle; 30, 52, 66, 67, 75  
 Yost, Sandee; 31  
 Young, Candice; 15  
 Young, Kay Lynn; 15  
 Young, Susan; 15  
 YOUNG DEMOCRATS 57

# Z

Zampieri, Dianna; 31, 77, 132  
 Zaring, Betty; 46  
 Ziegler, Brian; 24, 109, 118, 143  
 Zink, John; 14, 67, 129  
 Zuck, Greg; 46, 47



## Bobbie Finch '92

...but the genius of the United States is not best or most in its executives or legislators, nor in its ambassadors or authors or colleges or churches or parlors, nor even in its newspapers or inventors...but always most in the common people.

Walt Whitman  
Preface to "Leaves of Grass"

Time is like a fashionable host,  
That slightly shakes his parting guest by the hand  
And with his arms outstretched, as he would fly  
Grasps on the corner:  
welcome ever smiles,  
And farewell goes out sighing

Shakespeare

## Stephanie Wall '93

Be kinder than necessary.

Leave everything a little better than you found it.

Think big thoughts, but relish small pleasures.

Don't waste time grieving over past mistakes. Learn from them and move on.

H. Jackson Brown, Jr.  
Life's Little Instruction Book

## Julie Underwood '94



## Table of Contents

Students	2-39
Faculty and Staff	40-49
Organizations	50-80
Color Block	81-97
Sports	98-123
Events	124-152
Index and Closing	153-160

**SOUTHWESTERN**  
**COLLEGE** IN KANSAS





## **Moundbuilder Staff**

### *Editors*

**Bobbie Finch**  
**Julie Underwood**  
**Stephanie Wall**

### *Staff*

**Karen Clum**  
**Dirk Fowler**  
**Shari Kennedy**  
**J. J. Leonard**  
**Lonnie Nichols**  
**Charles Rhoads**  
**Gabriel Rico**  
**Kris Riggs**  
**George Stover**  
**O'Dell Thomas**  
**Kazumi Watanabe**

