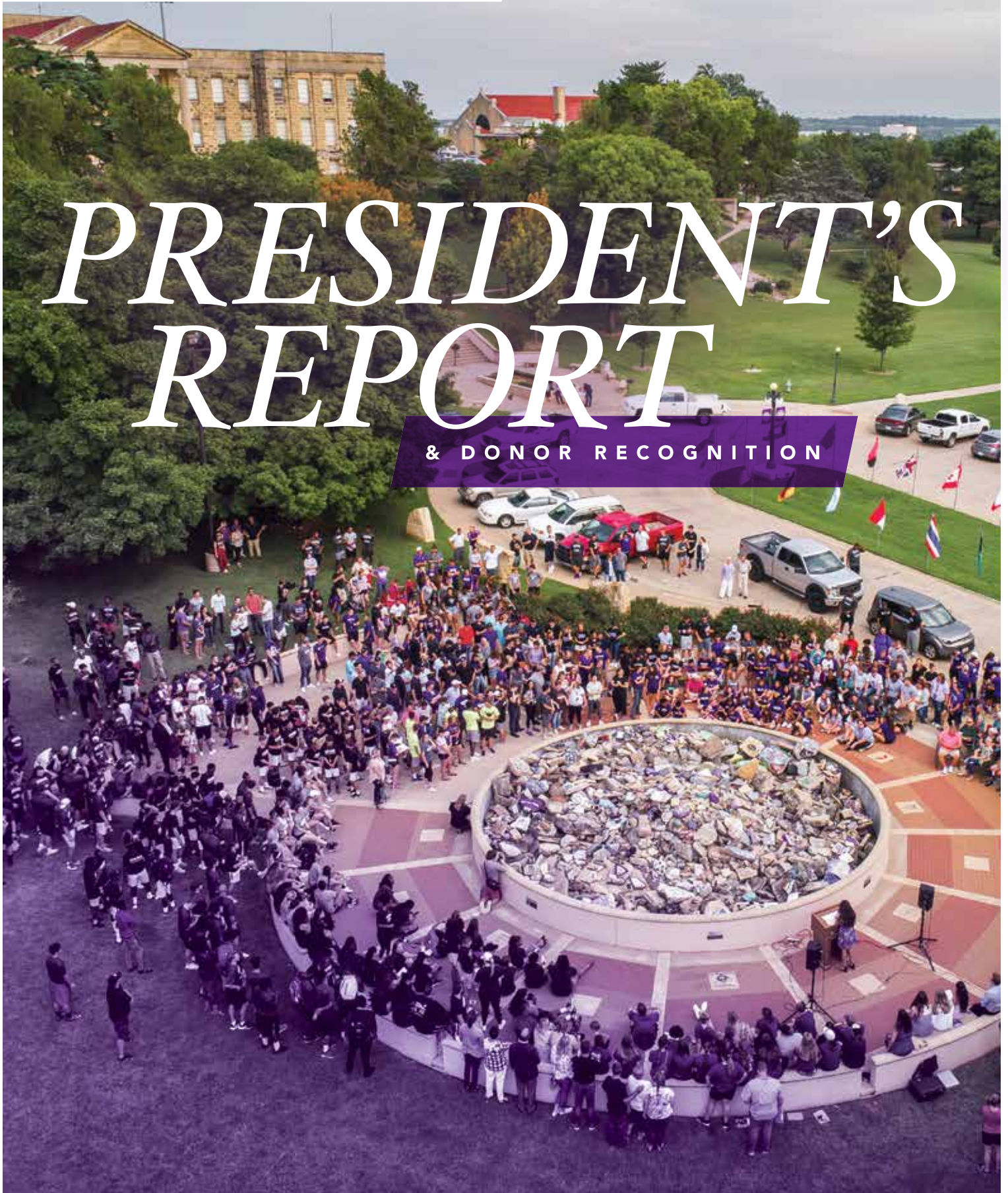


PRESIDENT'S REPORT

& DONOR RECOGNITION





PRESIDENT'S REPORT

welcome

SOUTHWESTERN COLLEGE PRESIDENT
Bradley J Andrews

THE SOUTHWESTERN
Kaydee Riggs-Johnson '11, *vice president
for marketing and communications*;
Susan Burdick, *graphic designer*; Terry
Quiett '94, *web producer*. Jerry Wallace
compiled information used in timeline.

Published quarterly by Southwestern
College, 100 College St., Winfield, KS
67156-2499. Periodicals postage paid
at Winfield, KS, and additional
mailing office. USPS #0612-560.

POSTMASTER: Send address changes to
The Southwestern, 100 College St.,
Winfield, KS 67156-2499.

We are pleased to publish a special 2018 President's Report edition of the *Southwestern*. This piece serves both as a retrospective, recognizing donors who supported our college from July 1, 2017 through June 30, 2018, and it allows space for President Andrews to share an update about the state of our college.

We look forward to your feedback and comments about this update to our publication schedule. Please email scpr@sckans.edu or write to my attention at 100 College, Winfield, KS 67156.

Go Builders!

Kaydee Riggs-Johnson
Vice President for Marketing & Communications



// A MEANINGFUL LIFE IS BUILT BY
BEING PART OF SOMETHING BIGGER
THAN YOURSELF.

NOTHING IN LIFE IS GREATER THAN
GIVING YOURSELF ENTIRELY TO SOMETHING—
TO A GROUP, A FAMILY,
A COLLEGE;

AND THEN, HAVING THAT FAMILY
GIVE ITSELF TO YOU.

THAT'S WHAT WE CELEBRATE.

THAT'S THE SPIRIT WE ARE KEEPING,
HONORING, PASSING ON.

That's the Builder Spirit.



DR. BRAD ANDREWS, PRESIDENT

"KEEPING THE SPIRIT"

ANNUAL PAINTING OF THE SC ROCKS, 2017



IT'S A *great day* FOR SOUTHWESTERN

President Orville Strohl, who led Southwestern from 1954 to 1972, was known to begin each event by proclaiming "It's a great day for Southwestern College." Today, in 2018, I hear his voice echo on our campus every day. Indeed, it is a great day for Southwestern.

I spent time this past summer studying the history of our college, reading the manuscripts and writings of my predecessors, including Dr. Strohl. I reflected on the external forces that have pushed and pulled on our institution throughout the decades. In the coming pages you will see a timeline that demonstrates several of these pivotal points in our 134-year journey.

Throughout our long history at Southwestern College we have always been blessed with a strong contingency of Moundbuilders who have willed this college forward. Builders who have known and believed in the value of Southwestern. Builders who have committed themselves to making her stronger. As Moundbuilders we have weathered droughts and Depressions, fought for our nation's freedom, returned from wars, carried books after Richardson Hall burned in 1950, constructed buildings and established unique traditions. All the while, we have refused to stop challenging and believing in our students.

We have a proud tradition of heroic work and sacrifice for our college. That good work continues on this campus today, in the efforts of our current students, faculty and staff. I am inspired by them; I am inspired by our history. We are privileged to join with each of you to will our college forward today.



As I reflect on the current state of the college, I also look to the future, aware of this moment in time, this point on our long and eventful timeline. How will the work we do now contribute to that progress? All of us today have a duty, an obligation, to do our part. I am proud of what we are accomplishing on this hill and I am confident about our course forward.

Enrollment Success

We have rolled up our sleeves and, as Builders are known to do, we have worked hard. We have remade recruitment strategy for main campus and have had great success. We have welcomed three of the four largest classes in the history of our college in the last three years. Main campus enrollment in the fall of 2018 is up to 611 students – the largest total enrollment in 25 years. Moreover, these students are excellent people, each with great potential. We are grateful that they have chosen to invest themselves in Southwestern. We are grateful that they have chosen the Builder family.

Financial Strength

Similar to the progress with enrollment, we have made great headway on our path to financial strength. Our financial health will always be inextricably linked to our ability to recruit and enroll students. We are a tuition-dependent institution. Accordingly, several years of low enrollments prior to refocusing on admission strategy had a direct impact on our financial strength.

As a campus community, we have chosen a path forward that requires a commitment to living within our means while delivering the very best education possible. The progress we have made to improve our financial position has been hard earned, particularly in a time of growth. Sacrifice and commitment to purpose have been required, but our footing is sure; we have made great progress.

Academic Vision

We remain committed to delivering the very best education possible. Together we are preparing students who are well-prepared and adaptable, who are servant leaders, who demonstrate strong character, who find joy in doing hard work – students who are Builders.

Our faculty, both on campus and online, continue to teach with genuine care. Perhaps our greatest value proposition is offering a learning experience grounded in meaningful relationships with an excellent faculty. We are engaging learners with a challenging and exciting curriculum that spans disciplines and results in powerful transformations.

At the end of the day, our enrollment success is an indicator of our relevance as an academic institution, an endorsement of the educational experience we offer at Southwestern. Hundreds of new students each autumn are choosing to become Builders; they are providing their endorsement of the power of the experience at Southwestern College.

While the complexity of our world has increased dramatically over the generations, the opportunities and challenges we encounter today are not so different than they have been over the past 134 years. Our timeline, our stories, our history make that clear. Certainly, the purpose and meaning of our work is unchanged – to educate, to guide, to uncover and develop the great potential that exists in Moundbuilders.

Reading through the manuscripts and our collective history, one passage stands out as an eternal truth for Southwestern College. President Strohl captured what is special about all of us when he said, "Builders believe that there are extraordinary possibilities in ordinary people." This belief is the core of who we are. This statement is the story of Southwestern College. This is exactly where our history and future come together. This is why I love our college.

We have much to celebrate and much to be grateful for – it is a great day for Southwestern.

LUX ESTO,



President Brad Andrews

1870

1885

1887

1889

1897

1898

1899

1900

1905

1909

1912

1924

1927

WHERE WE HAVE BEEN

a proud history



1870

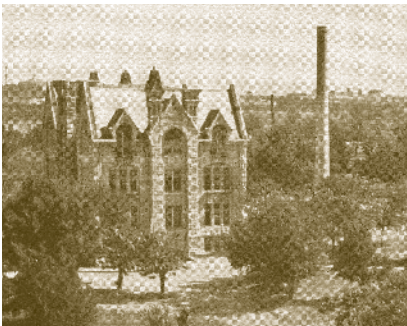
Winfield is settled

Town site chosen by Col. Manning in the Walnut River Valley "for its general beauty, pure water, abundant wildlife and fertile river bottom soil."

1885

South West Kansas Conference College

Winfield wins the fierce competition to become home of the South West Kansas Conference College by raising money from the community, and offering land and materials for construction.



1887

First building on campus, North Hall, completed

1889

First graduates

Amy Barnes of McPherson, Alvah John Graham and Olive P. Stubblefield, both of Winfield (below).



1897

Trustee steps forward

W.C. Robinson purchases and holds college's bonded debts. He is credited with saving SC.

1893-1897

ECONOMIC DEPRESSION & DROUGHT

Hard times lead to increased debt, drastic decline in enrollment. Faculty keep teaching despite "meager and irregular pay."

1898

Woman debater represents SC

Mabel Madeline Southard represents SC in an intercollegiate debate. To choose a woman to debate at the time was progressive; President Place said of the choice that Mabel was chosen for her ability.

1899

First African-American graduate

Elijah Pilgrim Geiger (left)



1900

A shorter name: Southwestern College

1905

An era of growth

President Frank E. Mossman (below) ushers in a time of expansion and prosperity. The college also embraces athletics, joining the Kansas College Athletic Conference in 1906.



1909

Richardson Hall

Overlooking the Walnut Valley, Richardson Hall takes its place atop the hill. The 77 Steps follows in 1910 (below).



1917-1918

U.S. ENTERS THE GREAT WAR

President Mossman advises students to "hold steady" and wait to be called. The Army unit from SC has 93 students prepared to ship out when the war ended.

1912

"Hoodoo" Jinx

After being painted on a slab, the "smug" black cat becomes a mascot and tradition (below).



1950

1954

1961

1965

1985

1994

1998

2012

2017

1929-1939***GREAT
DEPRESSION***

Plunged into a time of austerity and hard work. Trustees bring President Mossman back to offer leadership during difficult times.

1924***Stewart Field House
completed*****1927*****First Moundbuilding***

Dean Leroy Allen introduces the concept at morning chapel and that evening the college gathers to build the Mound for the first time (above).

**1950*****Richardson Hall Fire***

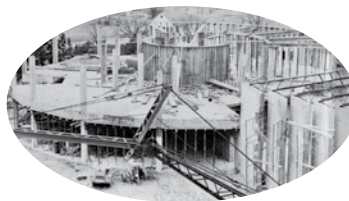
On Sunday, April 16, 1950, fire engulfs and destroys the college's main administrative and academic building (above). Only a half-day of classes are missed. Faculty teach in living rooms and in make-shift spaces across campus until Mossman Hall and the Memorial Library are finished in 1951. Christy Administration Building, as it is now called, is reopened in 1952.

**1954*****C. Orville Strohl
begins presidency -
advances SC***

Over 18 years Dr. Strohl (Class of 1931) remakes the college into a first-rate, modern institution of higher education. He not only assembles an outstanding faculty, but expands the curriculum, the endowment (the largest of any private college in Kansas), and the campus. During his tenure nine new buildings arise on campus, including the Roy L. Smith Student Center and Darbeth Fine Arts Center. Additionally, at the time of his retirement the college is debt-free. (Above, Dr. Strohl is seen at a student life event held on the 77 Steps.)

1961***Alvin the alligator
arrives on campus***

Alvin is cared for by the Division of Natural Sciences until she passes away in 2000.

**1965*****Darbeth Fine Arts
Center completed*****1985*****Celebrating the
Centennial***

Many celebratory events recognize SC's 100th year, but arguably the most elaborate is awarding 100 students in the Class of 1985, the Centennial Scholars, free tuition for their four-year matriculation.

**1994*****First Professional
Studies Center opens***

The first program for degree-oriented adult learners opens in downtown Winfield. Additional locations would be added, including an office in Wichita in 1996. With a commitment to accessibility and logistical ease, Professional Studies has been an attractive option for military personnel stationed across the globe.

1998***Beech Science Center
and Mabee Laboratory
Complex opens*****2012*****Great Performances
Campaign strengthens
campus***

Richard L. Jantz Stadium, Richardson Performing Arts Center, and TOMARI Center are completed.

**2017*****George and Inex
Hayward Gateway
to Success completed****The promise continues***BUILDING FOR
TOMORROW****1941-1945 WORLD WAR II**

SC participates in Navy training programs, but eventually the draft significantly decreases the male population on campus. School leadership offers young Japanese-Americans the opportunity to complete their education.

WHERE WE ARE GOING

building momentum

Without sacrificing the traditions and values inherent in being a Moundbuilder, the changes I see at Southwestern position the school to address with clear eyes the very real threats that could jeopardize the entirety of the non-profit college experience for current and future students. An era of difficult choices is at hand, and Southwestern continues to face them head-on.



MATT LINDSEY

President, Kansas Independent College Association and Foundation

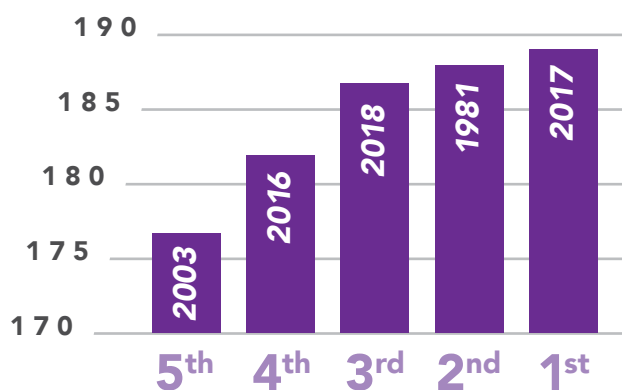
As a student on campus for the past four years I have had the opportunity to experience a great deal of growth – both in the literal size of our student body, and even more so in the size of our Builder pride. The more our campus seems to expand, the bigger our pride in the school we love grows. Although there have been many wonderful changes at Southwestern, one fact remains the same, and that is our commitment and love for SC.



JAY BUFFUM

Class of 2019, Business Administration with a marketing emphasis

Five largest freshman classes in Southwestern's history



July 2017 to June 2018

\$2.4
MILLION
TOTAL GIVING
Increase of 7% from year prior

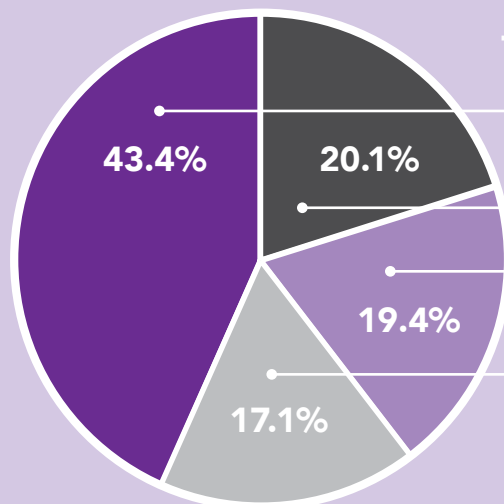
2,119 DONORS
Increase of 12%



Making a difference in all ways.

STUDENT FINANCIAL SUPPORT

100%
of students
receive aid



TOTAL GIVING BY FUND

Annual Fund Restricted
CONTAINS SCHOLARSHIPS

Capital Improvements

Builder Fund

Endowment
CONTAINS SCHOLARSHIPS

Thank you

FOR YOUR GENEROUS SUPPORT



Dear friends,

Those who are listed in the following pages have made the continued advancement of Southwestern possible. The strength of our college, the accomplishments of this past year, should be celebrated by each and every one of you, for you have made it possible. We are proud to honor and recognize our college's strongest supporters.

I am grateful to each and every individual, organization, and business who make annual gifts, heritage giving commitments, sponsorships, and endowment contributions. Your generous and faithful support allows Southwestern College to remain rooted in a powerful mission, share treasured traditions, and move with enthusiasm toward opportunities that improve the student experience and strengthen our institution.

We have great momentum at Southwestern College. Encouraged and empowered by your investment and trust, we continue forward on an exciting path. Thank you for making this a great day for Southwestern.

Cordially,

Brad Andrews
President, Southwestern College

DONOR RECOGNITION

Board of Trustees	P 9
Heritage Society	P 9
1885 Society	P 10-11
Donors by Giving Levels	P 12-18
Alumni Donors by Class Year	P 19-22
Memorials	P 23
Faculty & Staff Donors	P 23
Tributes	P 23
Program Endowments and Scholarships . . .	P 24



TRUSTEES

2017 – 2018

Scott C. Hecht '90, chair
Cheryl E. Gleason '76, vice chair
Eric J. Kurtz '92, secretary
Vicki L. Bond
Stanley A. Bowling '90
Courtney J. Brown '95
Steven T. Cauble '72
Gregory Cole '10
Marilyn A. Corbin '70
Bryan K. Dennett '92
James L. Fishback '77
Abby J. Gengler '15
Gregg A. Howell '73
Rebecca A. Kill '87
C. Michael Lennen '67
Michael D. Lewis '74
Florence C. Metcalf '63
Joshua G. Moore
M. Kim Moore '71
David A. Muttiah '99
Bradley J. Newell '02
F. David Peck '76
Mitchell L. Reece
Ruben Saenz, Jr.
Donald Sherman
David E. Smith '73
Rodney N. Strohl '76
William L. Tisdale, Sr.
Thomas E. Wallrabenstein '59
Ronald P. Williams '02

EMERITUS

Craig L. Anderson '82
Kelly B. Bender '68
Phyllis J. Bigler '54
Grace M. Brooks '52
William D. Brookst† '50
George M. Cole '63
Keith M. Dial '68
Larry D. Eason '55
Yvette Ehrlich
A. J. (Jack) Focht '57
R. Patrick Gaughan
Margaret L. Gilger '49
Sue A. Hale '66
Ronald W. Holt
Robert P. Jewell '77
Richard H. Leftwich† '41
Allan J. Lundeen '54
H. Leon Mattocks '74
Steve A. McSpadden
Michael T. Metcalf '89
Albert F. Mutti
David C. Parsons
Candace J. Petty '68
James R. Reed '64
Kelly J. Rundell '82
Brilla A. Scott, 59
William T. Seyb '65
John T. Smith '64

HONORARY TRUSTEE

Bruce P. Blake

The Heritage Society recognizes donors who have included Southwestern College in their estate plans. In doing so, these loyal and generous Builders help to secure the future well-being of the college.

Estate commitments may be large or small, may be unrestricted or designated, and may come in the form of naming the college in a will, as the beneficiary of an insurance policy, a charitable gift annuity, charitable trust or other deferred gift. Each will make a difference for years to come.

HERITAGE SOCIETY

To protect our donors, these lists are not published online. Please contact the Office of Institutional Advancement to make a request for a donor listing.

The 1885 Society recognizes donors for their investment in Southwestern. These donors exemplify Builder excellence with their commitment during the fiscal year. 1885 Society donors ENHANCE Southwestern, EMPOWER faculty and students to reach for the undiscovered and INSPIRE the imaginations of tomorrow's leaders.

1885 SOCIETY

DONORS BY GIVING LEVEL

To protect our donors, these lists are not published online. Please contact the Office of Institutional Advancement to make a request for a donor listing.



DONORS BY GIVING LEVEL

To protect our donors, these lists are not published online. Please contact the Office of Institutional Advancement to make a request for a donor listing.

To protect our donors, these lists are not published online. Please contact the Office of Institutional Advancement to make a request for a donor listing.

To protect our donors, these lists are not published online. Please contact the Office of Institutional Advancement to make a request for a donor listing.



ALUMNI DONORS

by class year

To protect our donors, these lists are not published online. Please contact the Office of Institutional Advancement to make a request for a donor listing.

To protect our donors, these lists are not published online. Please contact the Office of Institutional Advancement to make a request for a donor listing.



TOP 10 GIVING CLASSES 2017-2018

	TOTAL GIVEN
1970.....	\$ 367,829.87
1952.....	\$ 117,530.89
1953.....	\$ 110,441.84
1960.....	\$ 76,478.45
1968.....	\$ 48,845.02
1972.....	\$ 39,290.00
1969.....	\$ 33,893.00
1977.....	\$ 32,540.00
1961.....	\$ 31,373.00
1964.....	\$ 31,212.68



MEMORIALS

FACULTY & STAFF DONORS

To protect our donors, these lists are not published online. Please contact the Office of Institutional Advancement to make a request for a donor listing.

TRIBUTES

PROGRAM ENDOWMENTS AND SCHOLARSHIPS

Only scholarships and endowments that are new or enhanced by gifts during the year, are listed.

To protect our donors, these lists are not published online. Please contact the Office of Institutional Advancement to make a request for a donor listing.



// WE ARE ALWAYS BUILDING;
FROM A PROUD HISTORY,
WITH EXTRAORDINARY MOMENTUM,
toward a bright future. //

DR. BRAD ANDREWS
PRESIDENT

SOUTHWESTERN

VOL. 58 | NO. 4 | 2018

Southwestern College
Office of Marketing and Communications
100 College St.
Winfield, KS 67156-2499

PERIODICALS
POSTAGE PAID



SOUTHWESTERN
COLLEGE

Photo by Davo Muttiah '99